

# V&V Reference Report

## L2 ASCDS Version : 8.4.3

Observation 14271 - L2 Version 1  
Chandra X-Ray Center

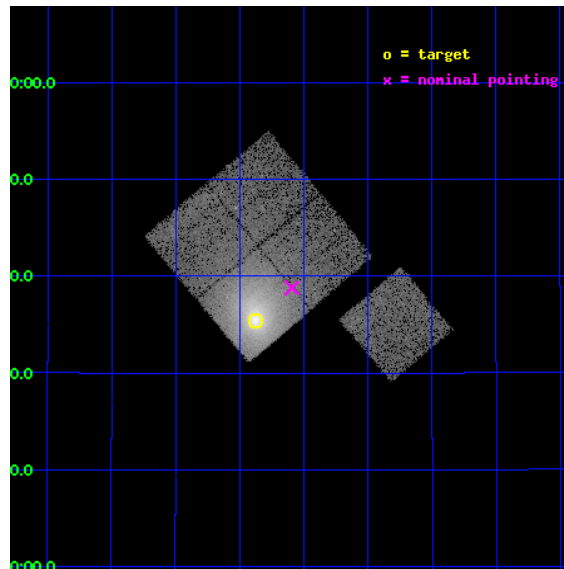
L2 Processing Date : Mar 26 2012

## Contents

<b>1</b>	<b>Front</b>	<b>2</b>
<b>2</b>	<b>OBI</b>	<b>3</b>
2.1	OBI . . . . .	3
2.1.1	Images . . . . .	3
2.1.2	Bias . . . . .	3
2.1.3	Parameters . . . . .	4
2.1.4	Events . . . . .	4
2.2	Compared Parameters . . . . .	5
2.3	Aspect . . . . .	6
2.4	Star Slots . . . . .	9
2.4.1	Slot 3 . . . . .	9
2.4.2	Slot 4 . . . . .	10
2.4.3	Slot 5 . . . . .	11
2.4.4	Slot 6 . . . . .	12
2.4.5	Slot 7 . . . . .	13
2.5	FID Slots . . . . .	14
2.5.1	Slot 0 . . . . .	14
2.5.2	Slot 1 . . . . .	15
2.5.3	Slot 2 . . . . .	16
<b>A</b>	<b>Summary</b>	<b>17</b>
A.1	Status . . . . .	17
A.2	Comments . . . . .	17

# 1 Front

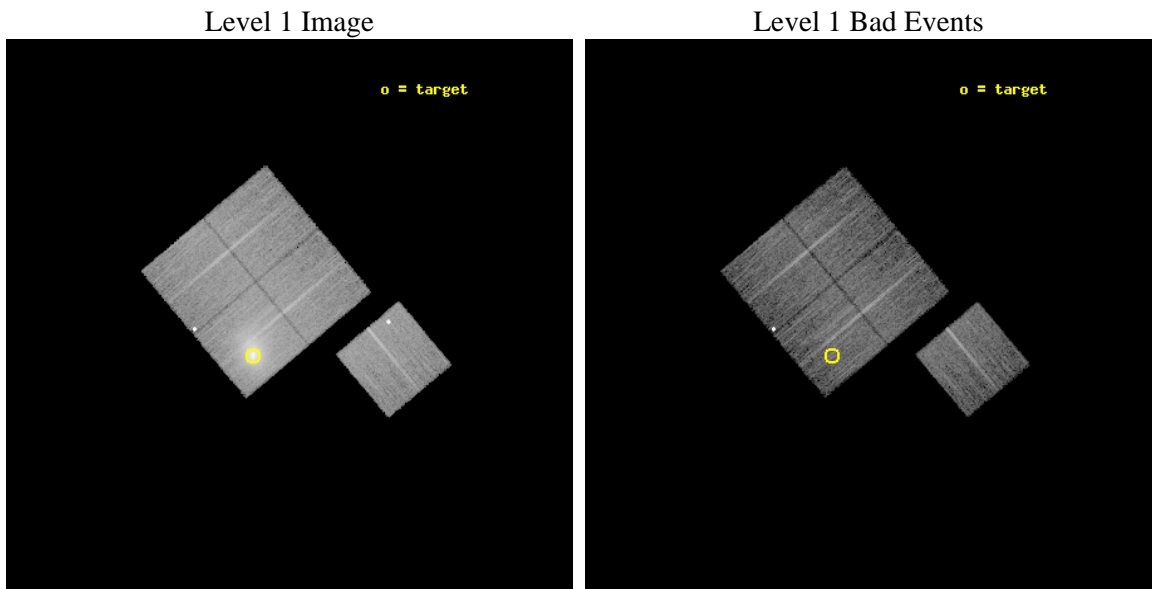
seq_num	890066	Sequence number
obs_id	14271	Observation id
title	AO-13 Calibration Observations of A1795	Proposal title
observer	Dr. CXC Calibration	Principal investigator
object	A1795	Source name
dtcycle	0	&#160
cycle	P	events from which exps? Prim/Second/Both
ra_targ	207.219583	Observer's specified target RA [deg]
dec_targ	26.590833	Observer's specified target Dec [deg]
ra_nom	207.1484462799	Nominal RA [deg]
dec_nom	26.646885002528	Nominal Dec [deg]
roll_nom	139.98050405411	Nominal Roll [deg]
revision	1	Processing version of data
ontime	14160.80010891	Sum of GTIs [s]
livetime	13975.778830457	Livetime [s]
ontime0	14157.659088552	Sum of GTIs [s]
ontime1	14160.80010891	Sum of GTIs [s]
ontime2	14160.80010891	Sum of GTIs [s]
ontime3	14160.80010891	Sum of GTIs [s]
ontime6	14160.80010891	Sum of GTIs [s]
l2events	135140	Number of level 2 events



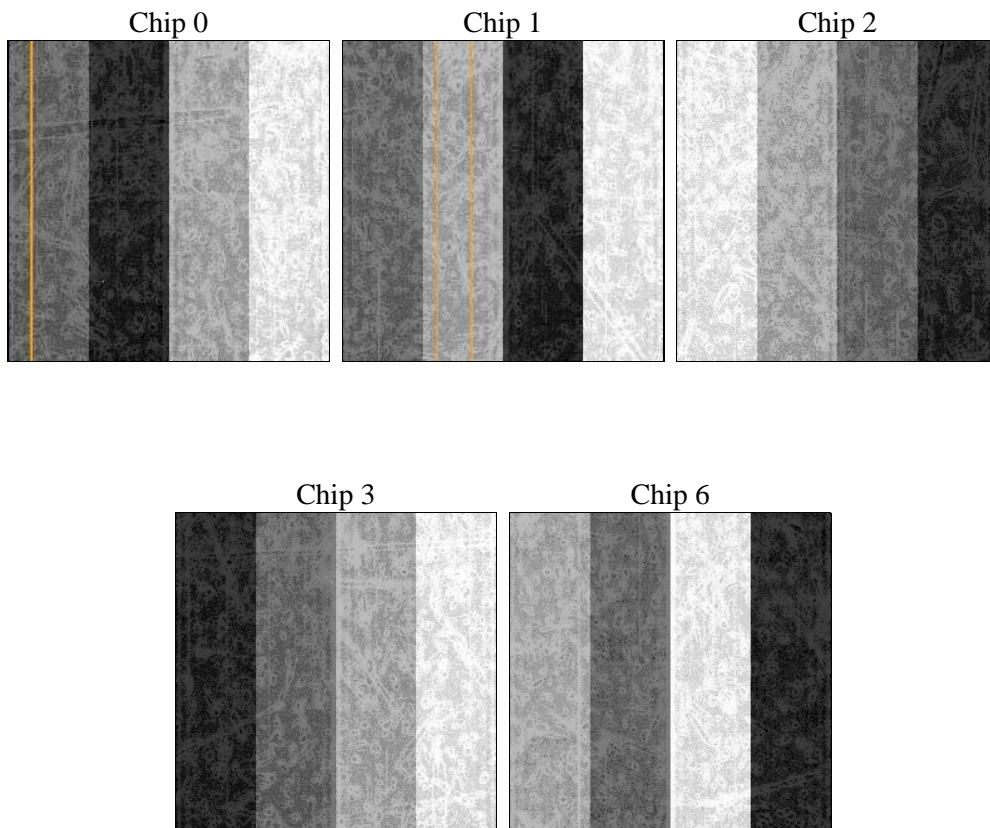
## 2 OBI

### 2.1 OBI

#### 2.1.1 Images



#### 2.1.2 Bias



### 2.1.3 Parameters

obi_num	1	Obi number	sched_exp_time	14388.000000	[s] Scheduled observation exposure time
ascdsver	8.4.3	Processing system revision	ontime	14160.80010891	Sum of GTIs [s]
caldbver	4.4.8	&#160	ontime0	14157.659088552	Sum of GTIs [s]
date	2012-03-26T13:11:32	Date and time of file creation	ontime1	14160.80010891	Sum of GTIs [s]
revision	1	Processing version of data	ontime2	14160.80010891	Sum of GTIs [s]
			ontime3	14160.80010891	Sum of GTIs [s]
			ontime6	14160.80010891	Sum of GTIs [s]
			l1events	497483	Number of level 1 events

### 2.1.4 Events

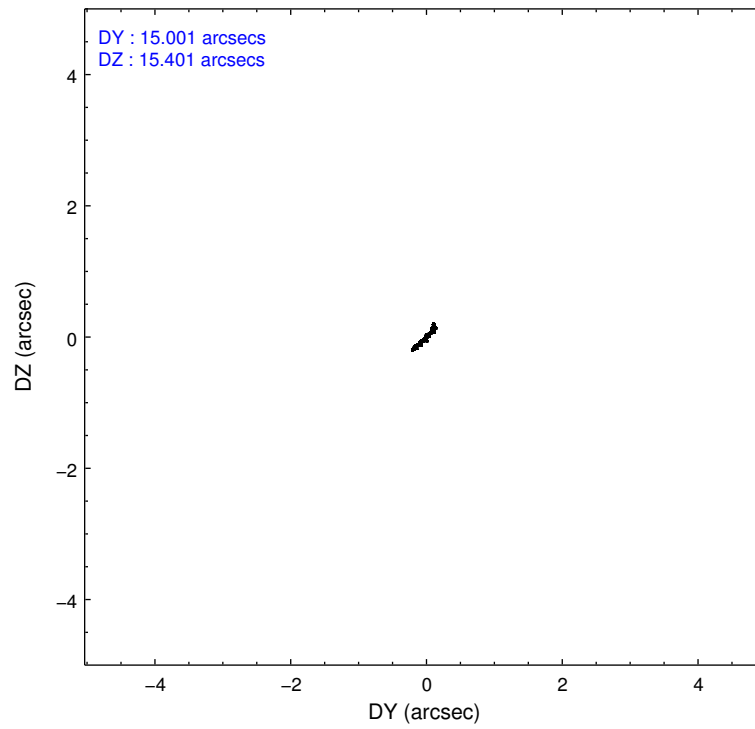
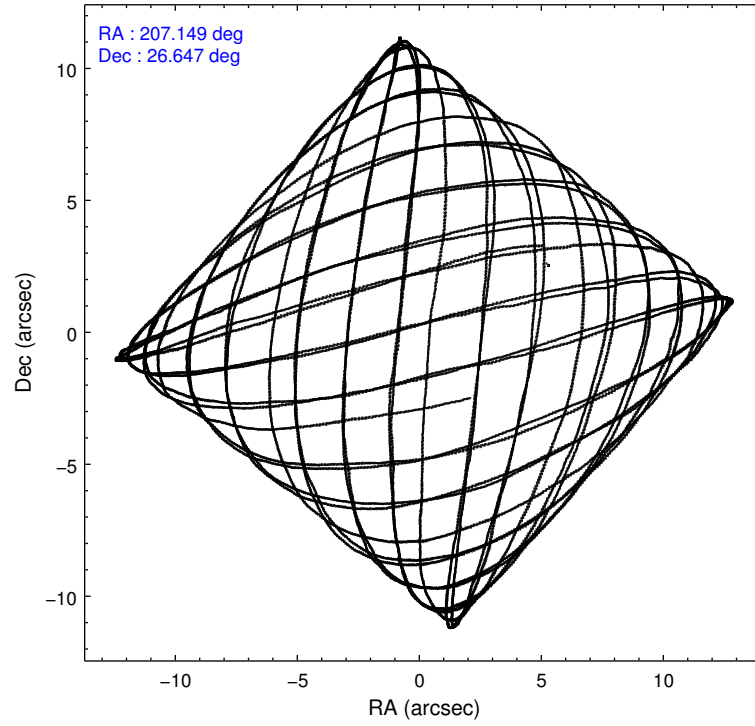
	ccd 0	ccd 1	ccd 2	ccd 3	ccd 6
level 1 events	74687	84029	81549	171352	85866
rejected events	64226	71106	69207	72298	71325
rejected %	85%	84%	84%	42%	83%

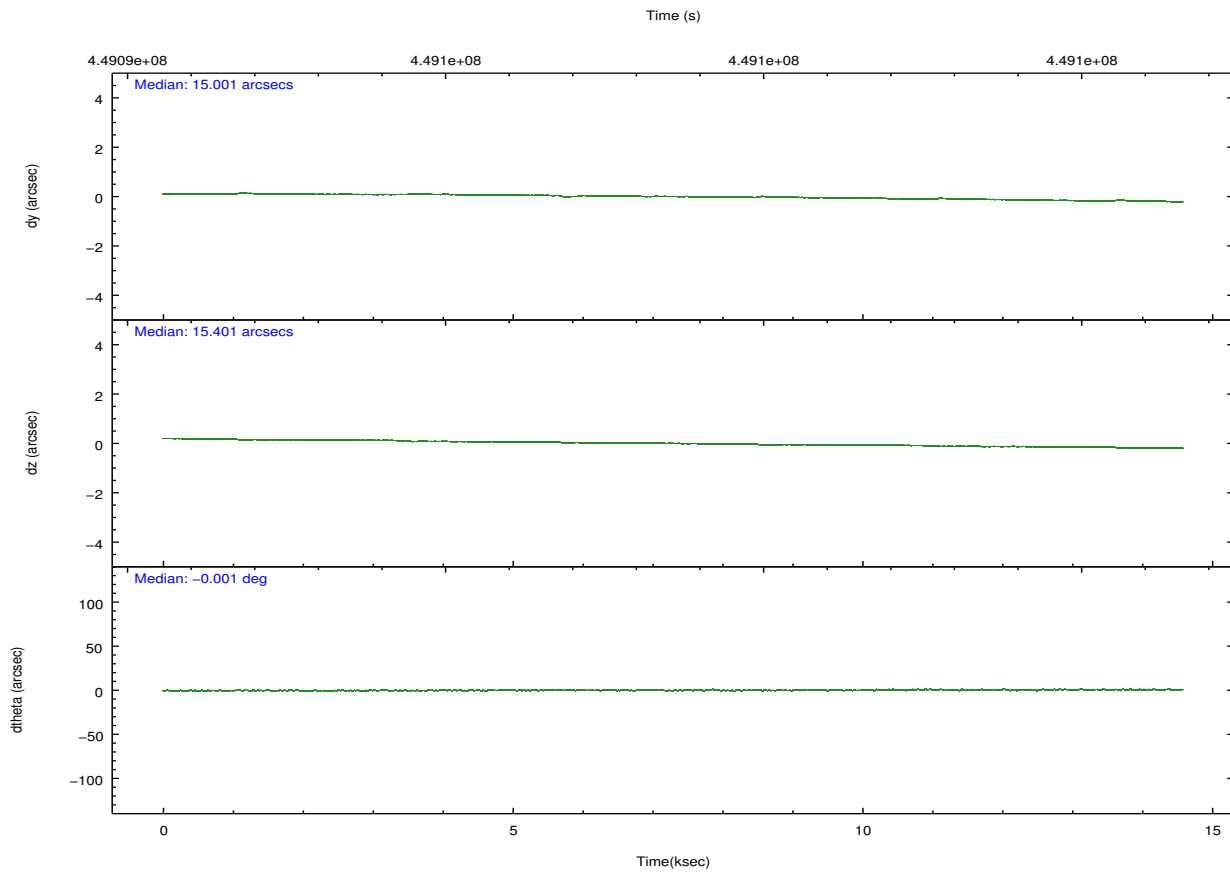
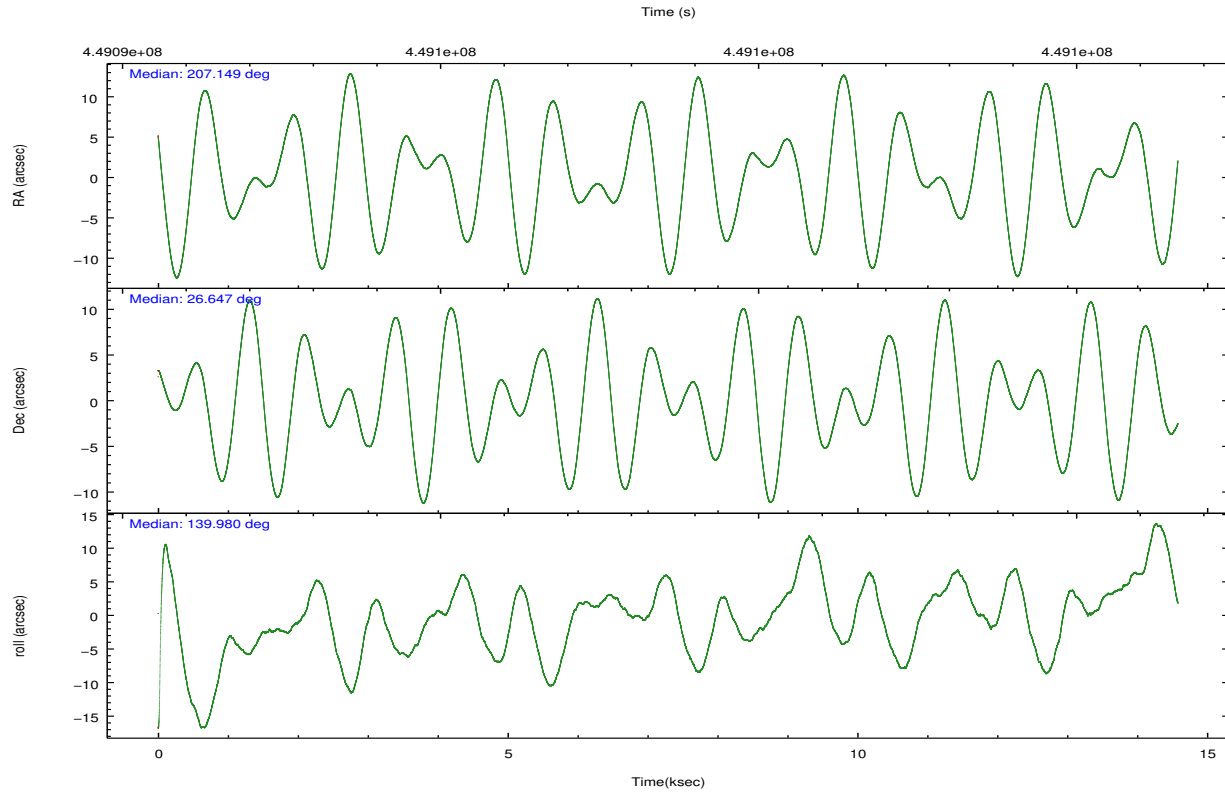
	ccd 0	ccd 1	ccd 2	ccd 3	ccd 6
grade 0 events	4051	5764	5818	76099	8084
	5%	6%	7%	44%	9%
grade 1 events	53	4427	64	390	67
	0%	5%	0%	0%	0%
grade 2 events	2482	2702	2612	11110	2156
	3%	3%	3%	6%	2%
grade 3 events	1002	1160	1024	3887	986
	1%	1%	1%	2%	1%
grade 4 events	945	1106	1038	3773	1025
	1%	1%	1%	2%	1%
grade 5 events	3757	3986	3464	4413	4057
	5%	4%	4%	2%	4%
grade 6 events	1981	2197	1853	4230	2291
	2%	2%	2%	2%	2%
grade 7 events	60416	62687	65676	67450	67200
	80%	74%	80%	39%	78%

## 2.2 Compared Parameters

Parameter	Planned	Actual	Parameter	Planned	Actual
Instrument	ACIS	ACIS	Obspar format version number	7	7
Detector	ACIS-01236	ACIS-01236	Obspar file type	PREDICTED	ACTUAL
Grating	NONE	NONE	Obspar update status	NONE	UPDATED
Data mode	VFAINT	VFAINT	Number of optional ACIS chips dropped	0	0
Observation mode	POINTING	POINTING	On-chip summing requested	N	N
[deg] Pointing RA	207.178826	207.1484462799043	Subarray requested	NONE	NONE
[deg] Pointing Dec	26.642203	26.64688500252815	Alternating exposures requested	N	N
[deg] Pointing Roll	139.758213	139.9805040541138	[s] Primary exposure time	0.000000	3.1
[mm] SIM focus pos	-0.782348	-0.7809083437167272			
[mm] SIM defocus	0	0.001439871863259334			
[mm] SIM translation stage pos	-219.472463	-219.4695540425693			
[mm] SIM translation stage offset	-14.12	-14.1228989603604			
[s] Observation start time (MET)	449091483.184000	449091106.59619			
Observation start date	2012-03-25T19:36:57	2012-03-25T19:31:46			
[s] Observation end time (MET)	449105871.184000	449106004.97198			
Observation end date	2012-03-25T23:36:45	2012-03-25T23:40:04			
Read mode	TIMED	TIMED			

## 2.3 Aspect



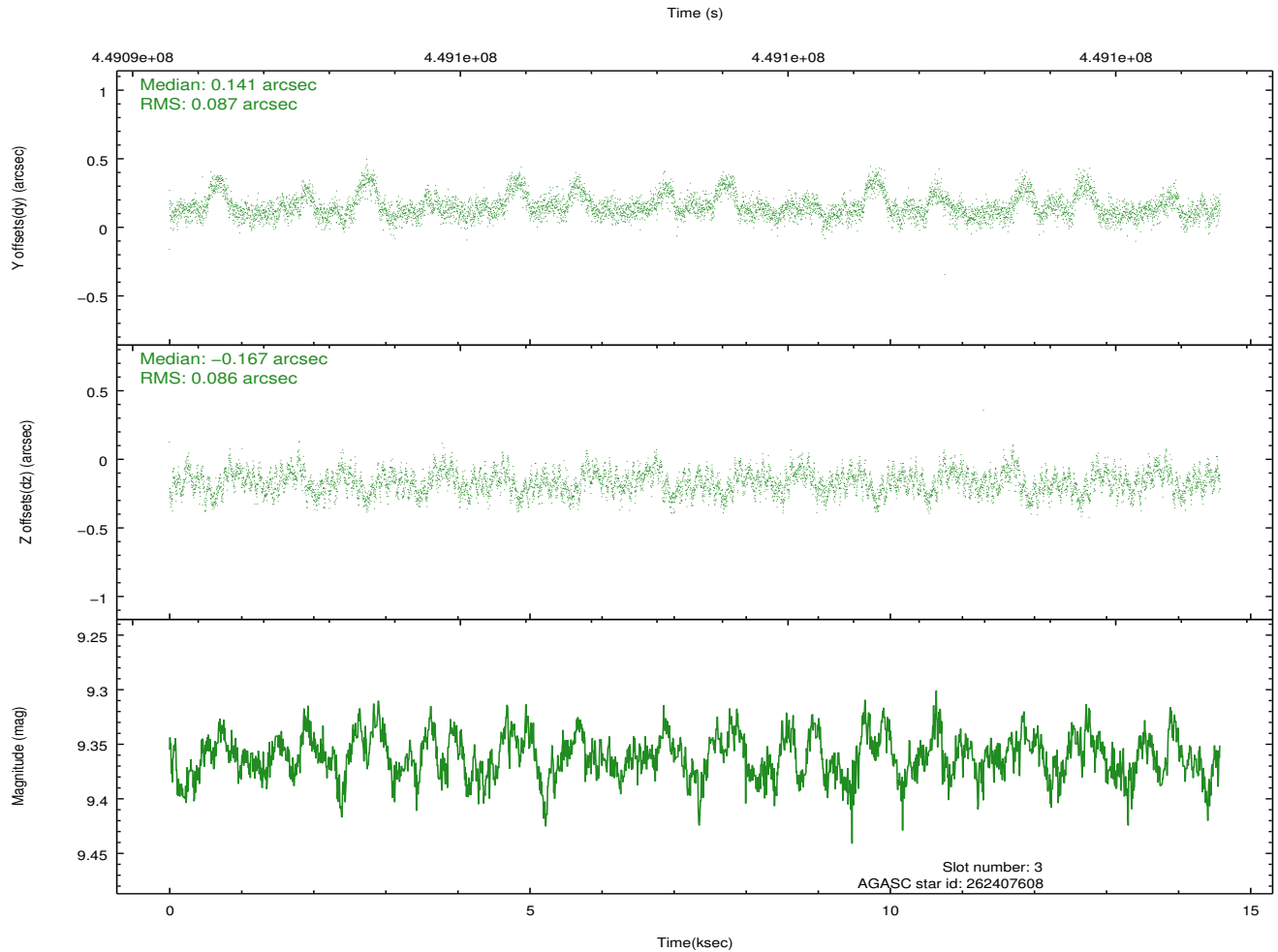
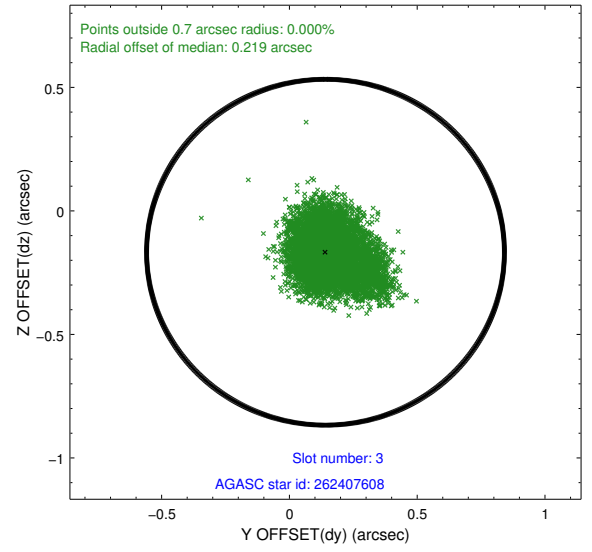
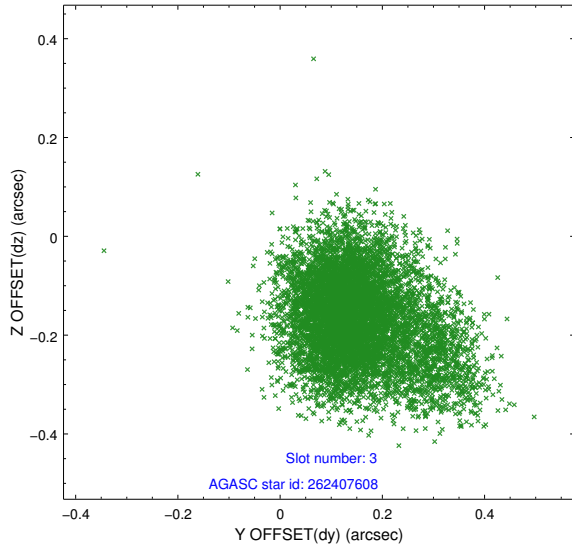


### Slot Statistics

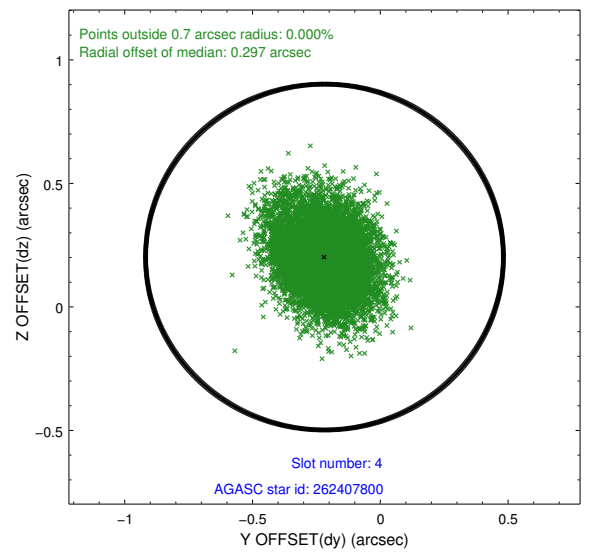
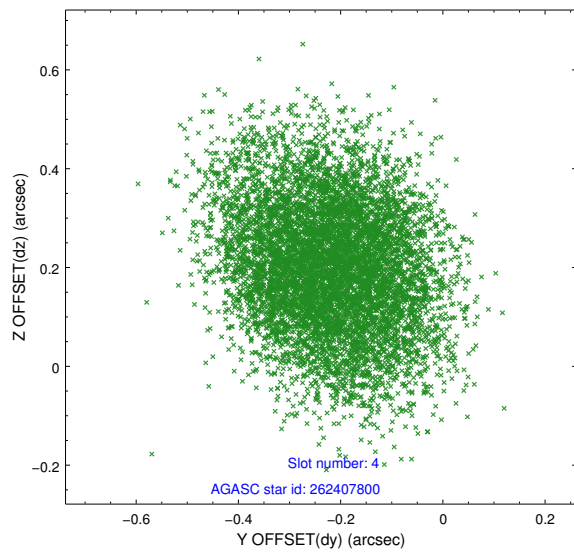
slot	status	id	mag	n_pts	med_dy	med_dz	dr1	dr2	ra	dec	mean_y	mean_z
0	FID	ACIS-I-1	7.05	3556	0.255	-0.214	0.006	0.010	0.000000	0.000000	924.44	-1129.25
1	FID	ACIS-I-5	7.07	3557	-0.431	0.178	0.006	0.009	0.000000	0.000000	-1824.15	768.44
2	FID	ACIS-I-6	7.09	3557	0.085	0.107	0.006	0.010	0.000000	0.000000	389.52	1413.20
3	GUIDE	262407608	9.36	7102	0.141	-0.167	0.126	0.218	207.378401	26.435507	-971.46	151.95
4	GUIDE	262407800	10.06	7048	-0.218	0.202	0.178	0.282	207.321181	27.251762	1071.19	-1967.37
5	GUIDE	262408096	9.34	7106	-0.121	-0.130	0.119	0.197	207.011678	26.515421	116.85	695.88
6	GUIDE	262408936	9.70	7071	0.044	0.182	0.181	0.282	207.154731	26.726554	255.10	-181.33
7	GUIDE	262411960	9.66	7106	0.134	-0.097	0.130	0.225	207.327895	25.881727	-2136.86	1777.74

## 2.4 Star Slots

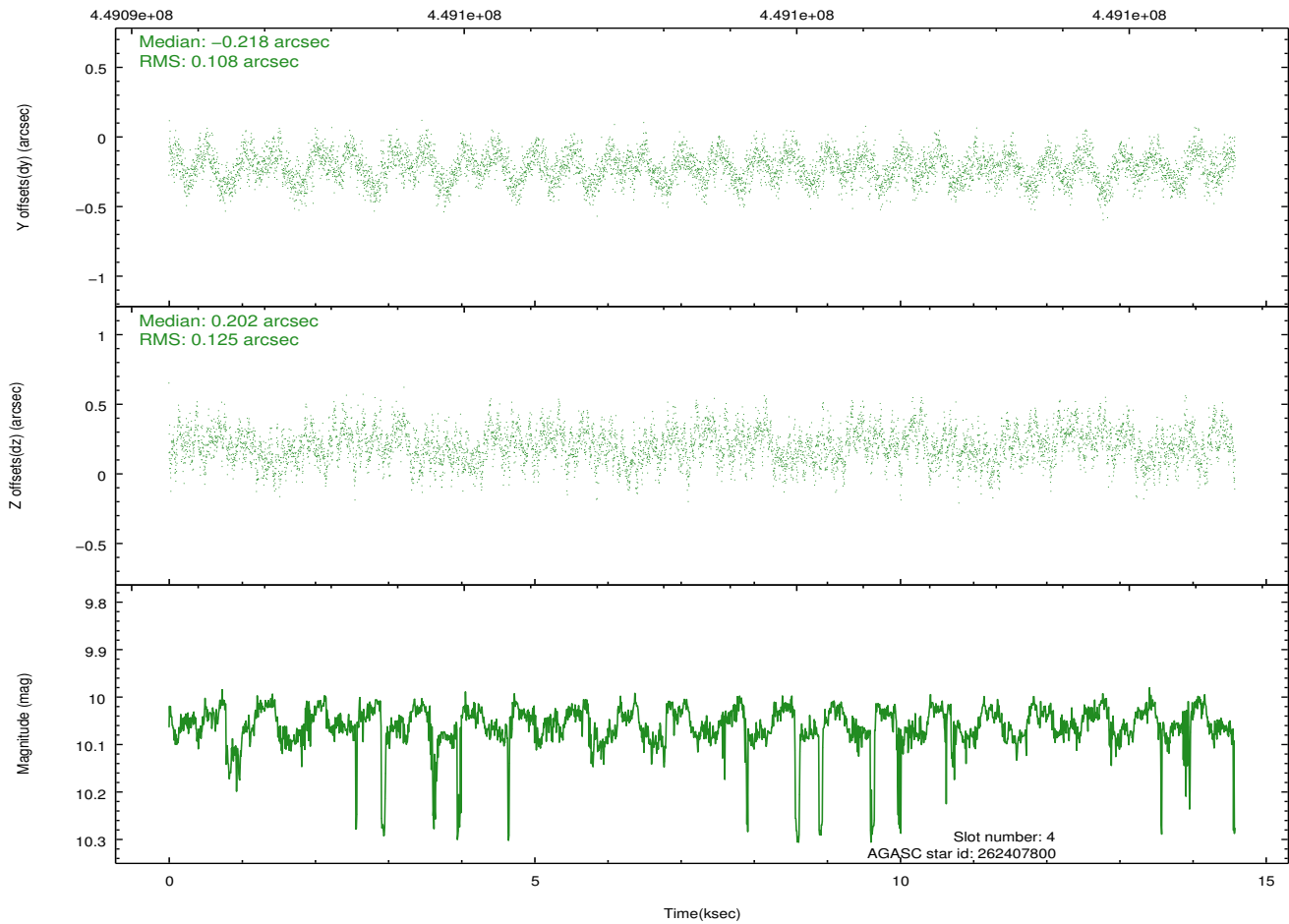
### 2.4.1 Slot 3



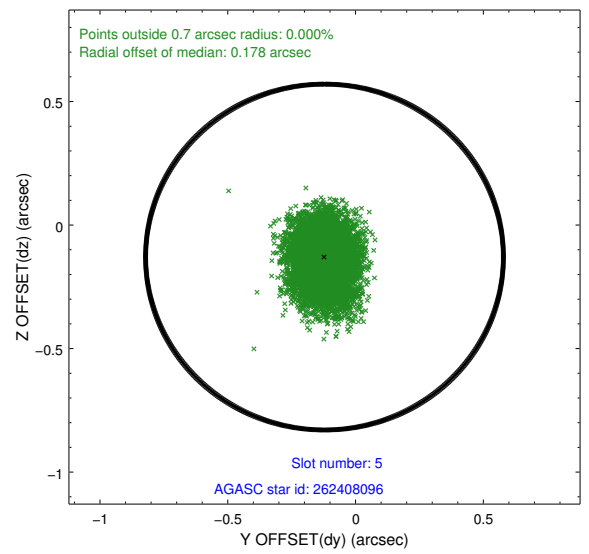
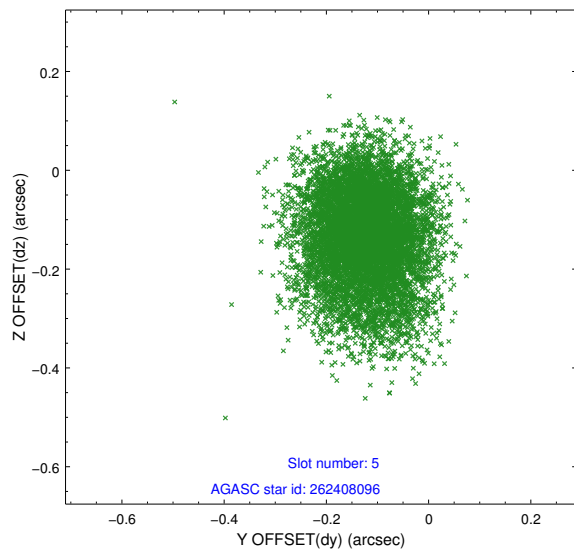
## 2.4.2 Slot 4



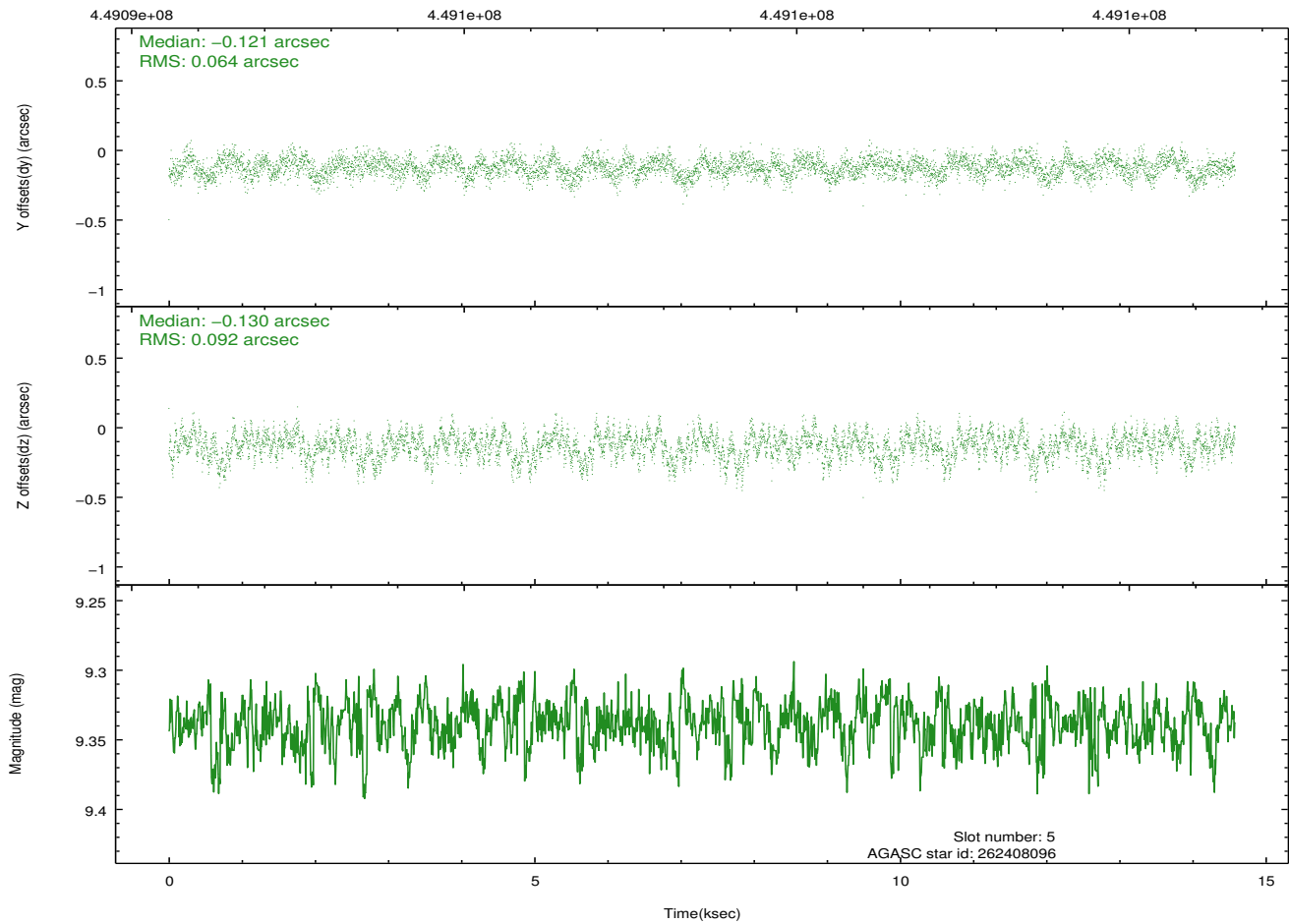
Time (s)



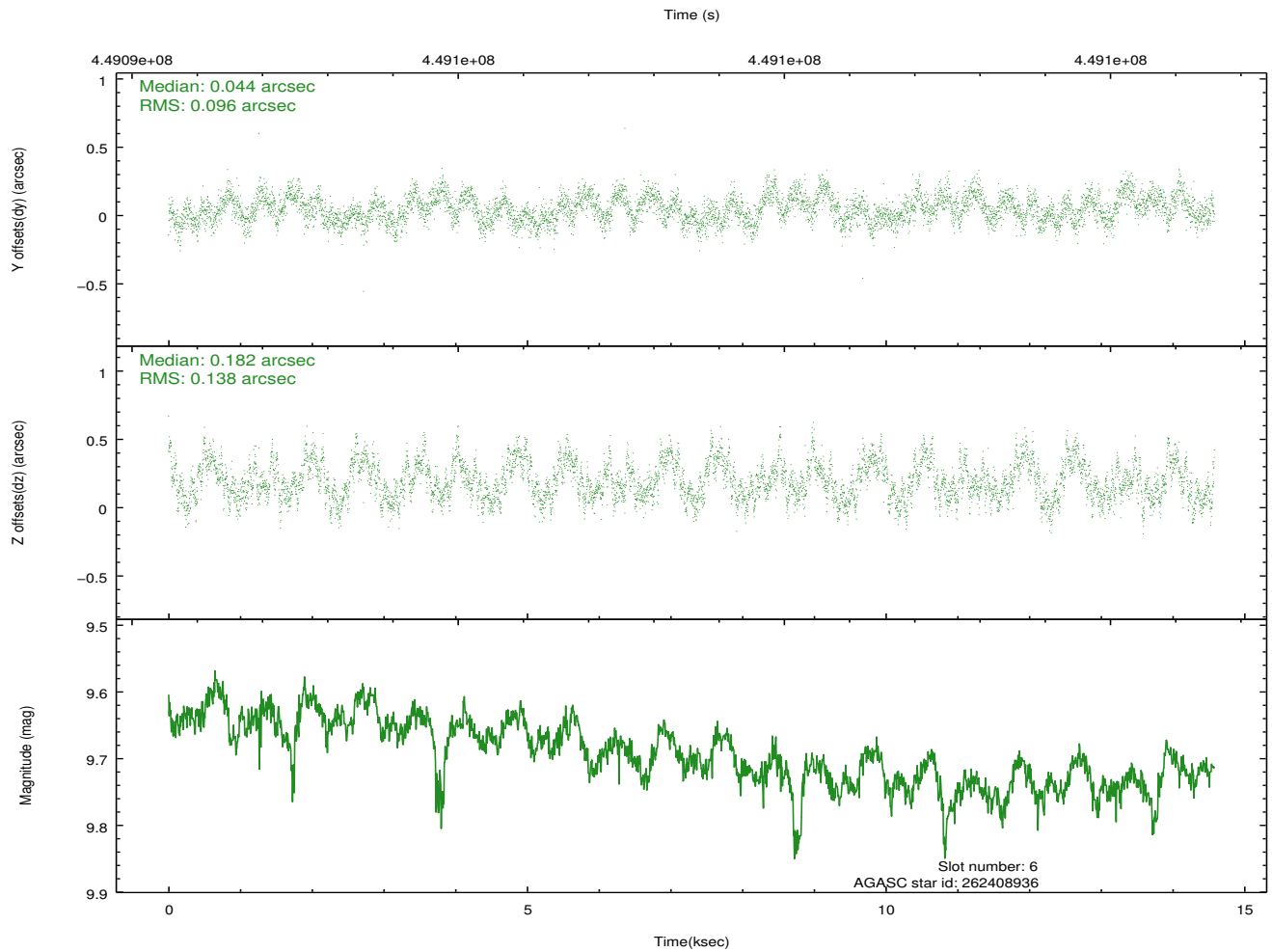
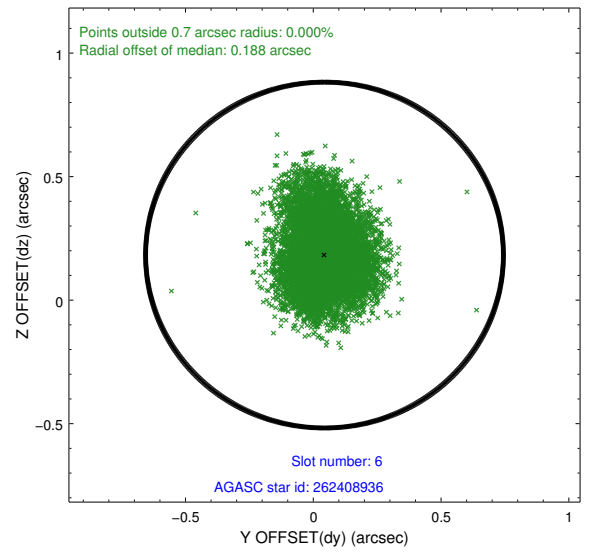
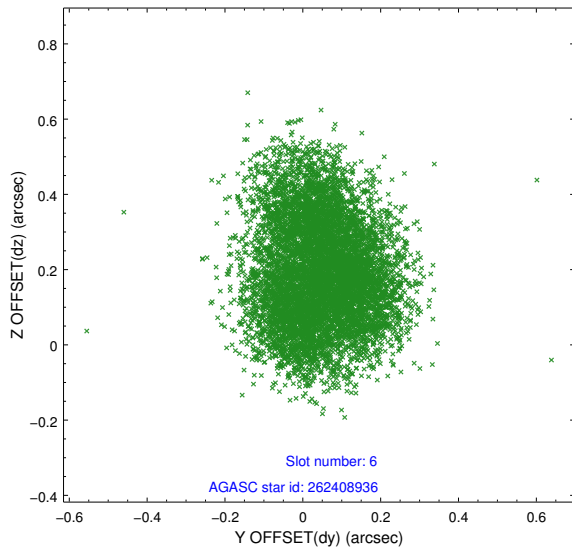
### 2.4.3 Slot 5



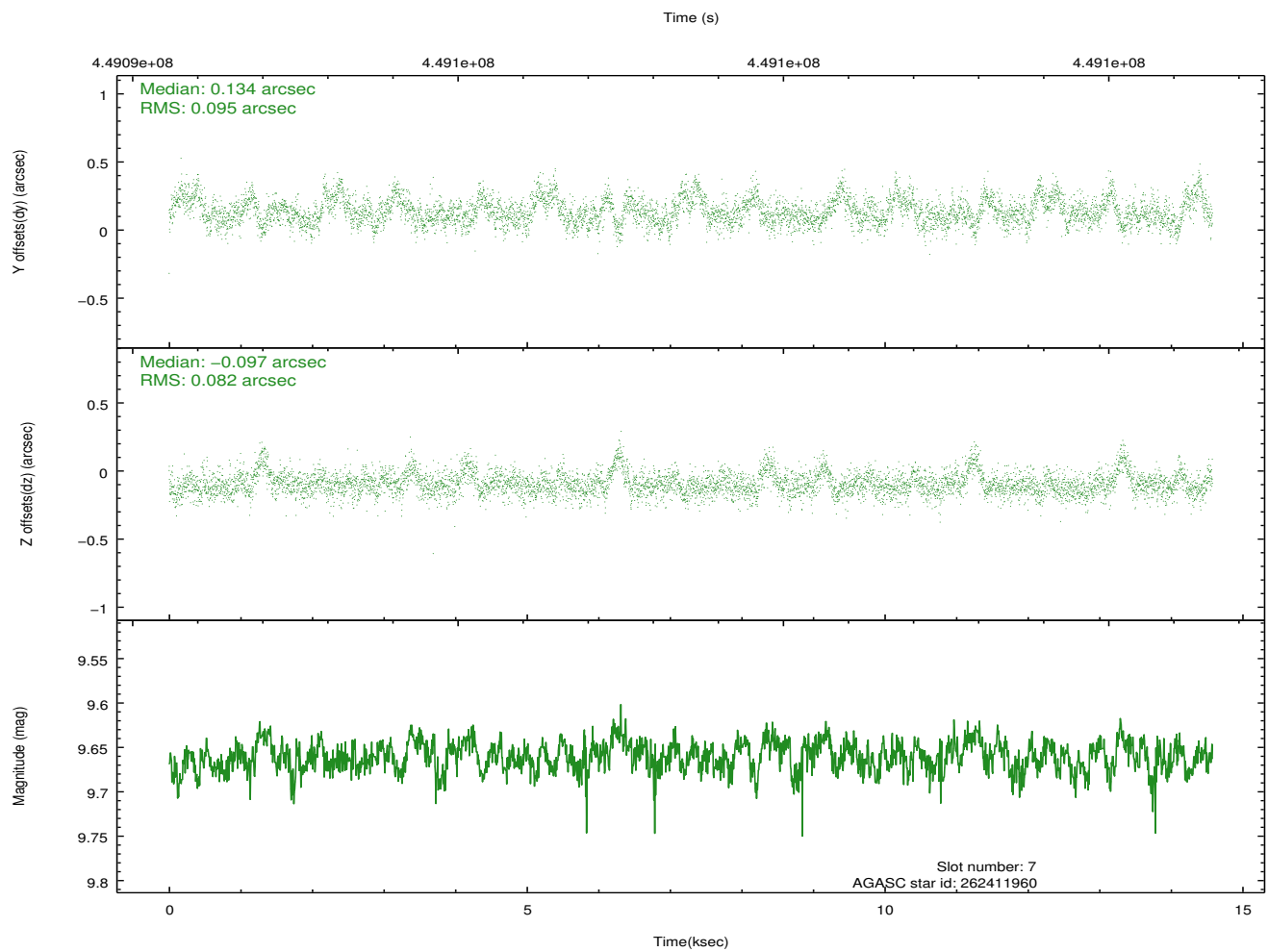
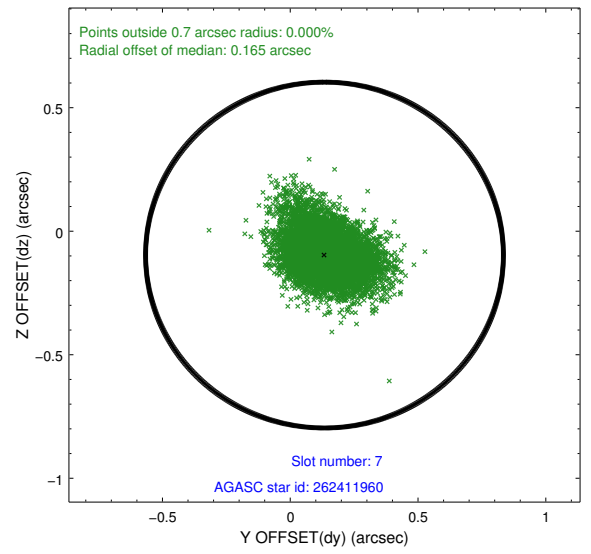
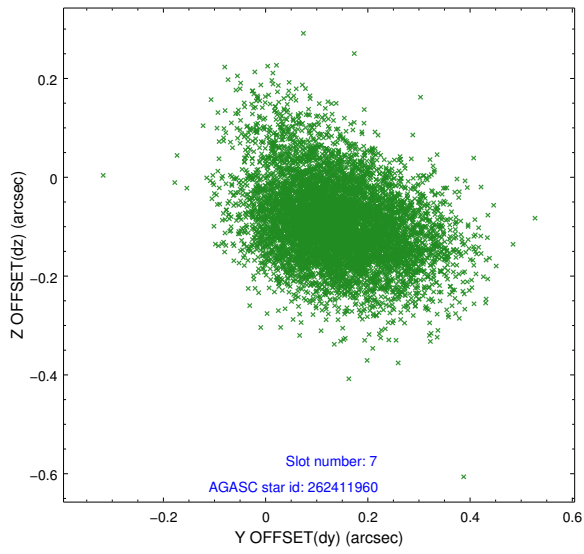
Time (s)



### 2.4.4 Slot 6

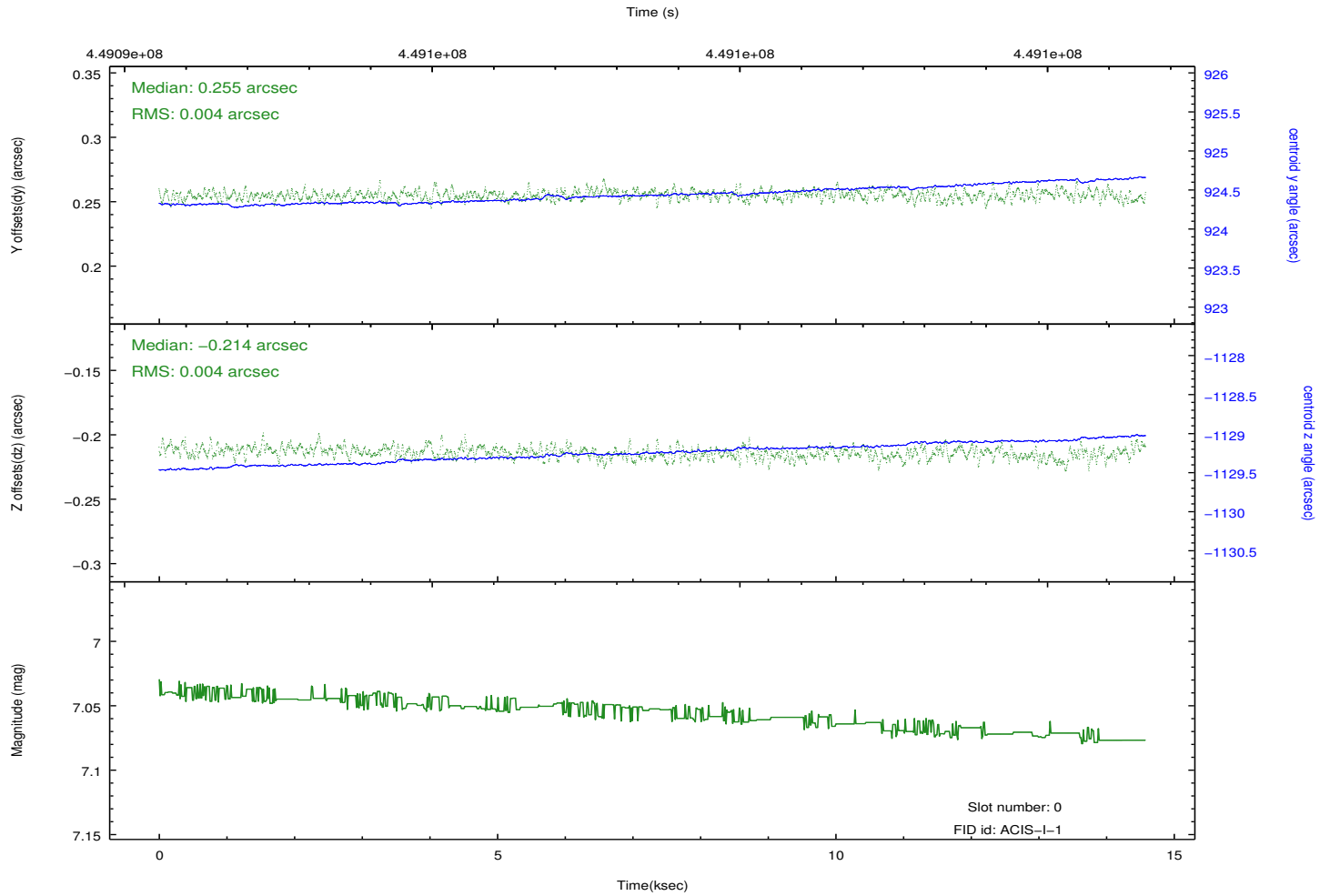
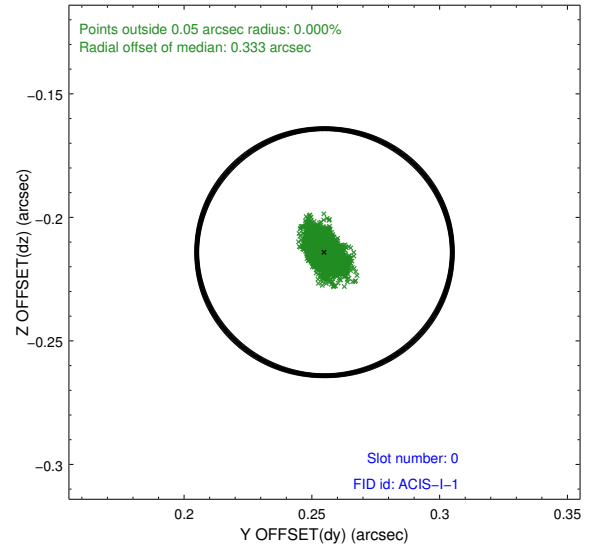
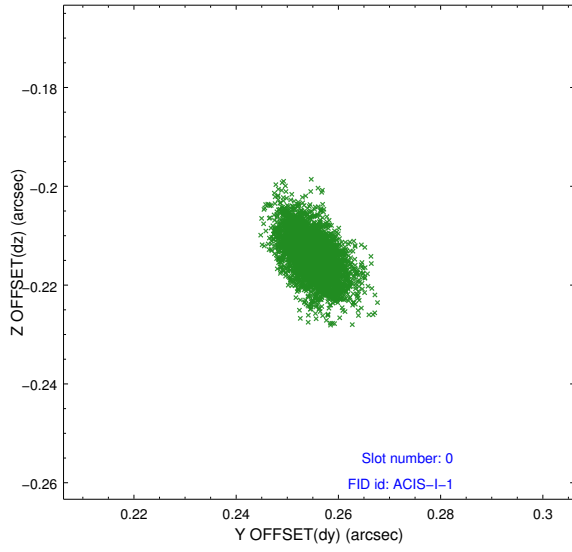


### 2.4.5 Slot 7

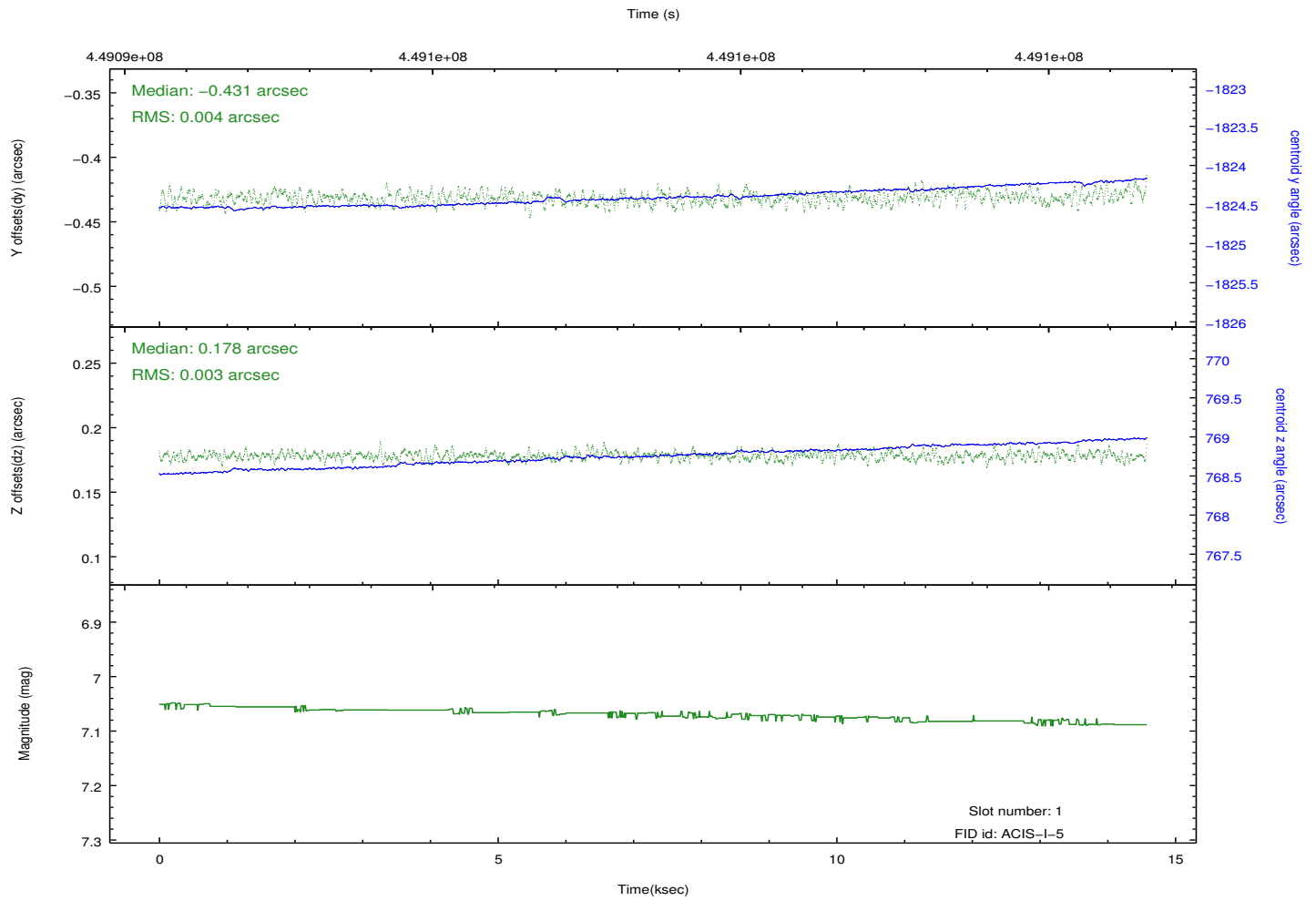
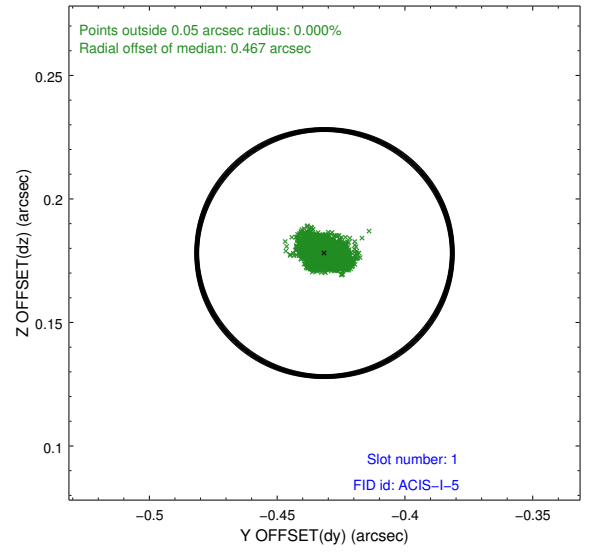
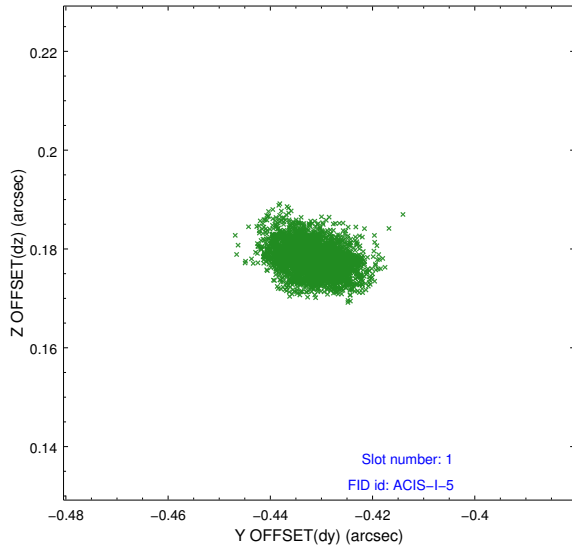


## 2.5 FID Slots

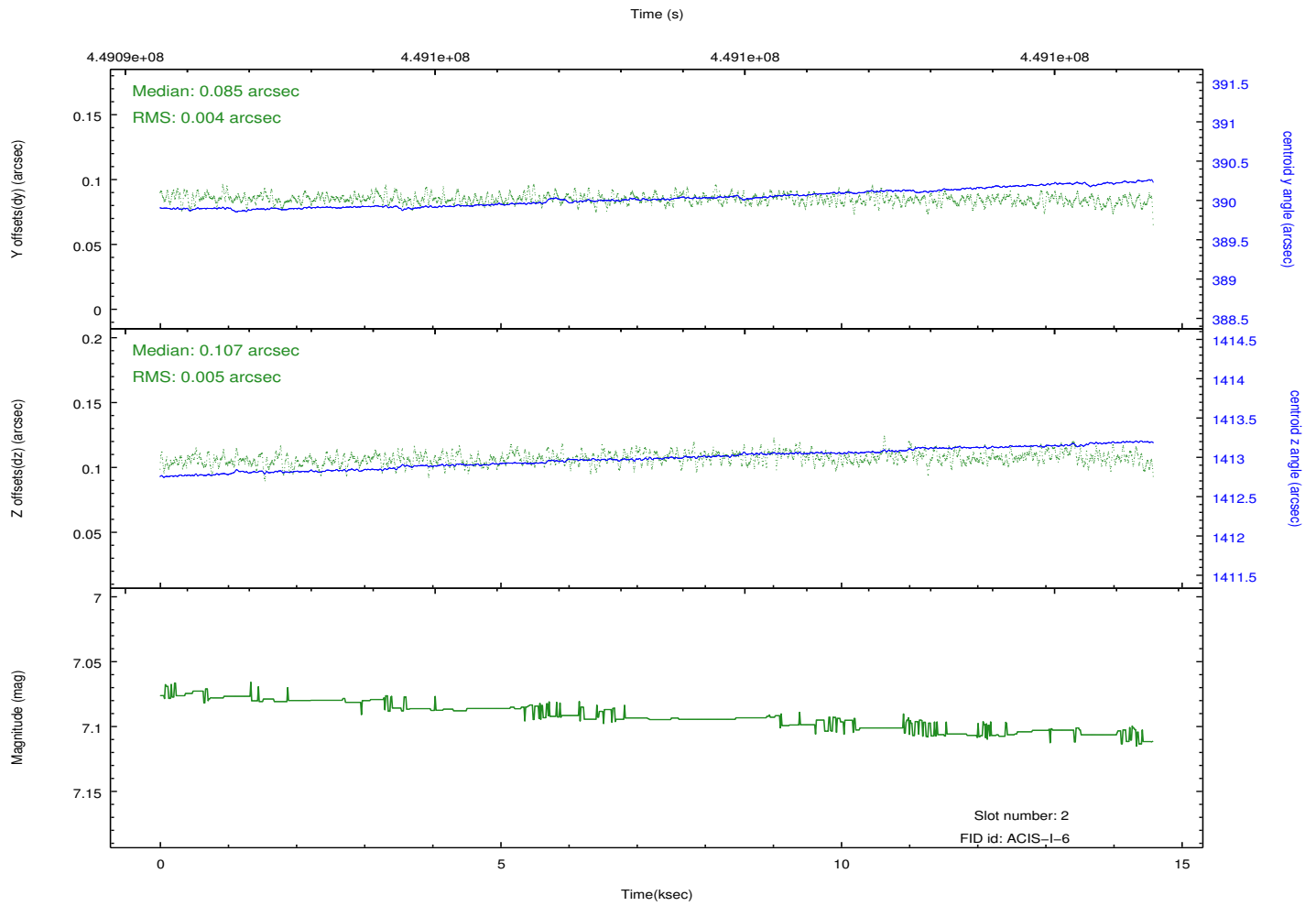
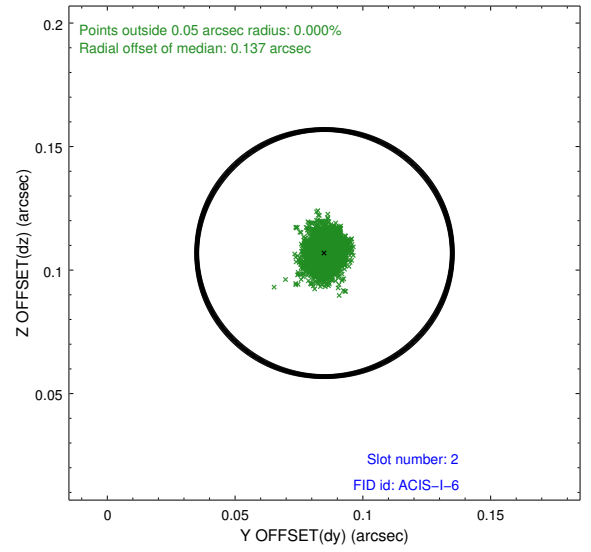
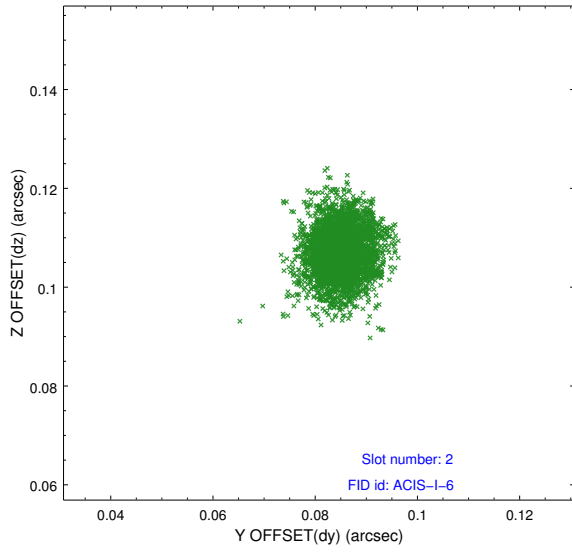
### 2.5.1 Slot 0



## 2.5.2 Slot 1



### 2.5.3 Slot 2



# A Summary

## A.1 Status

V&V Scientist	Jen Lauer
V&V Date (YYYY-MM-DD)	2012.03.28
V&V Edition	1
V&V Disposition and Status	OK
V&V Charge Time	14.16080010891

## A.2 Comments

This observation was performed with a large SIM offset, per PI request. As a result, the fid light positions are offset beyond normally expected ranges, but the fid light position correction has compensated for this offset.