

V&V Reference Report

L2 ASCDS Version : 8.4.3

Observation 14341 - L2 Version 2
Chandra X-Ray Center

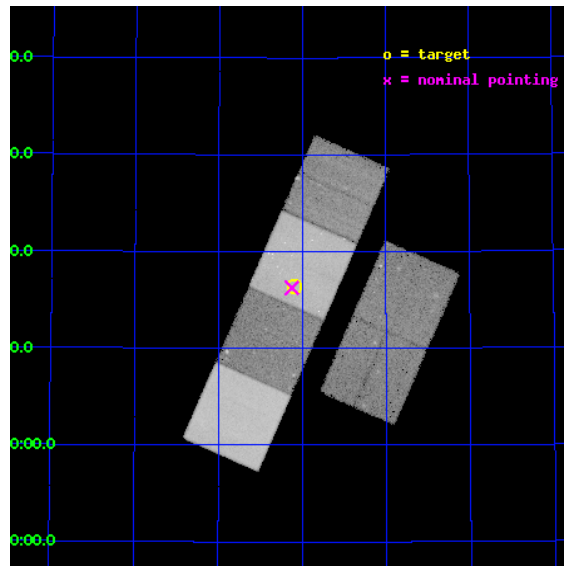
L2 Processing Date : Feb 20 2012

Contents

1	Front	2
2	OBI	3
2.1	OBI	3
2.1.1	Images	3
2.1.2	Bias	3
2.1.3	Parameters	4
2.1.4	Events	4
2.2	Compared Parameters	5
2.3	Aspect	6
2.4	Star Slots	9
2.4.1	Slot 3	9
2.4.2	Slot 4	10
2.4.3	Slot 5	11
2.4.4	Slot 6	12
2.4.5	Slot 7	13
2.5	FID Slots	14
2.5.1	Slot 0	14
2.5.2	Slot 1	15
2.5.3	Slot 2	16
A	Summary	17
A.1	Status	17
A.2	Comments	17

1 Front

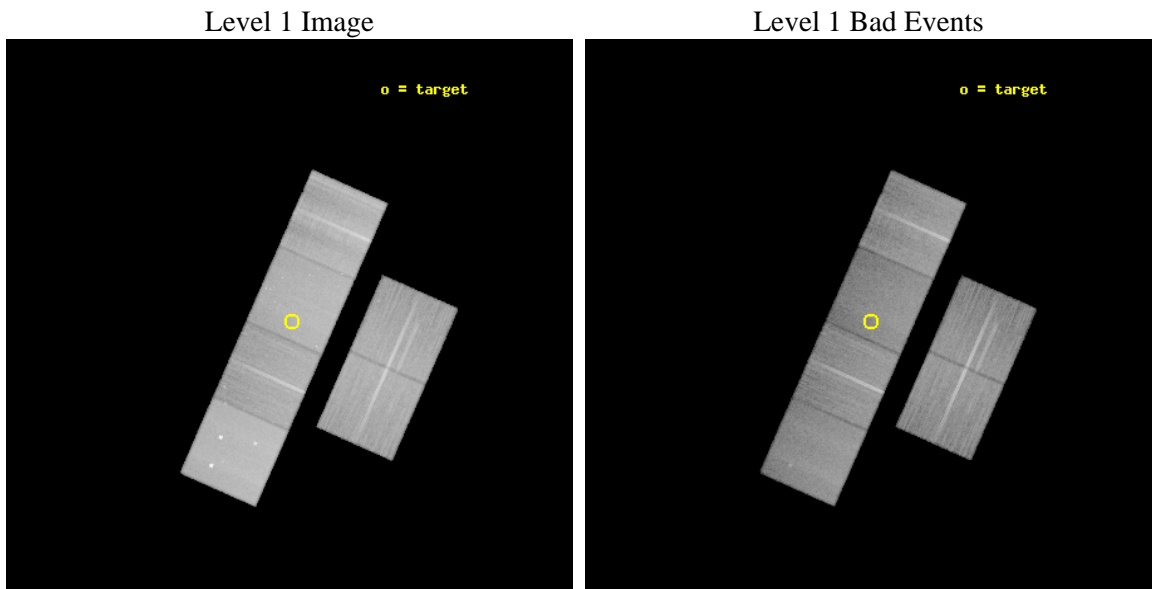
seq_num	501791	Sequence number
obs_id	14341	Observation id
title	Chandra Observations of the Nearest Type Ia SN in 25 Years	Proposa
observer	Prof John Hughes	Principal investigator
object	PTF11kly	Source name
dtycycle	0	
cycle	P	events from which exps? Prim/Second/Both
ra_targ	210.774167	Observer's specified target RA [deg]
dec_targ	54.273611	Observer's specified target Dec [deg]
ra_nom	210.78101699221	Nominal RA [deg]
dec_nom	54.270856211785	Nominal Dec [deg]
roll_nom	293.77107294642	Nominal Roll [deg]
revision	2	Processing version of data
ontime	49715.199814856	Sum of GTIs [s]
livetime	49085.676019901	Livetime [s]
ontime2	49715.199814856	Sum of GTIs [s]
ontime3	49715.199814856	Sum of GTIs [s]
ontime5	49715.199814856	Sum of GTIs [s]
ontime6	49715.199814856	Sum of GTIs [s]
ontime7	49715.199814856	Sum of GTIs [s]
ontime8	49715.199814856	Sum of GTIs [s]
l2events	529815	Number of level 2 events



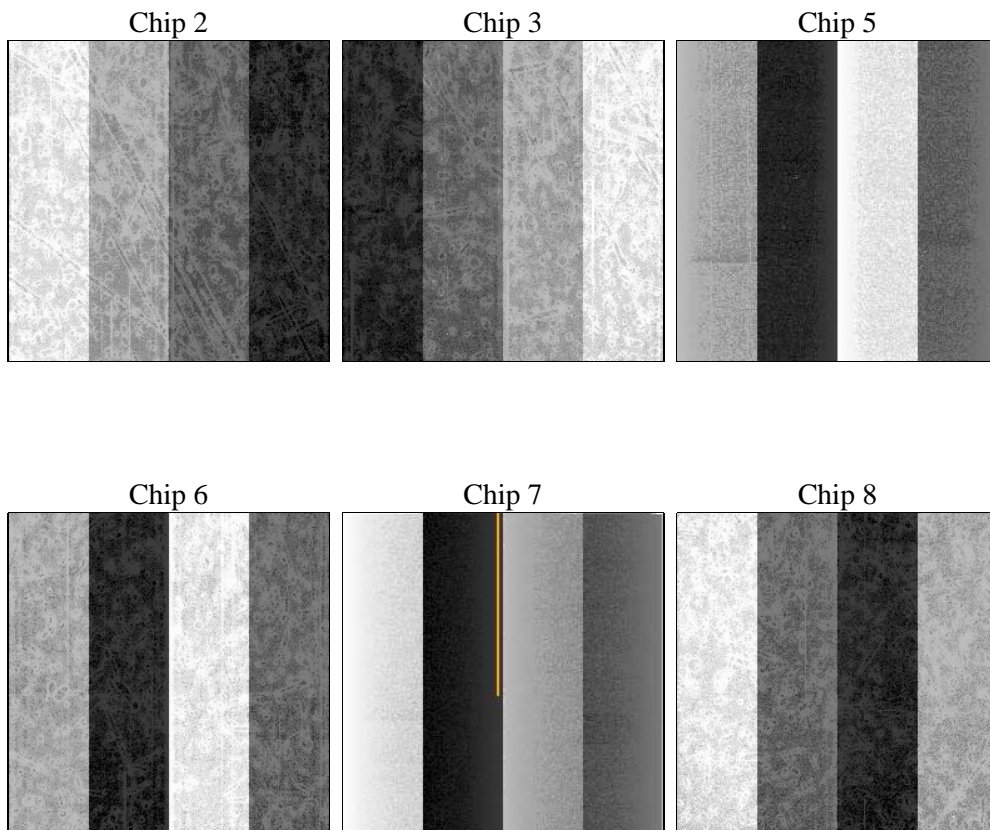
2 OBI

2.1 OBI

2.1.1 Images



2.1.2 Bias



2.1.3 Parameters

obi_num	0	Obi number	sched_exp_time	49663.000000	[s] Scheduled observation exposure time
ascdsver	8.4.3	Processing system revision	ontime	49715.199814856	Sum of GTIs [s]
caldbver	4.4.8	 	ontime2	49715.199814856	Sum of GTIs [s]
date	2012-02-20T23:55:33	Date and time of file creation	ontime3	49715.199814856	Sum of GTIs [s]
revision	2	Processing version of data	ontime5	49715.199814856	Sum of GTIs [s]
			ontime6	49715.199814856	Sum of GTIs [s]
			ontime7	49715.199814856	Sum of GTIs [s]
			ontime8	49715.199814856	Sum of GTIs [s]
			l1events	2225214	Number of level 1 events

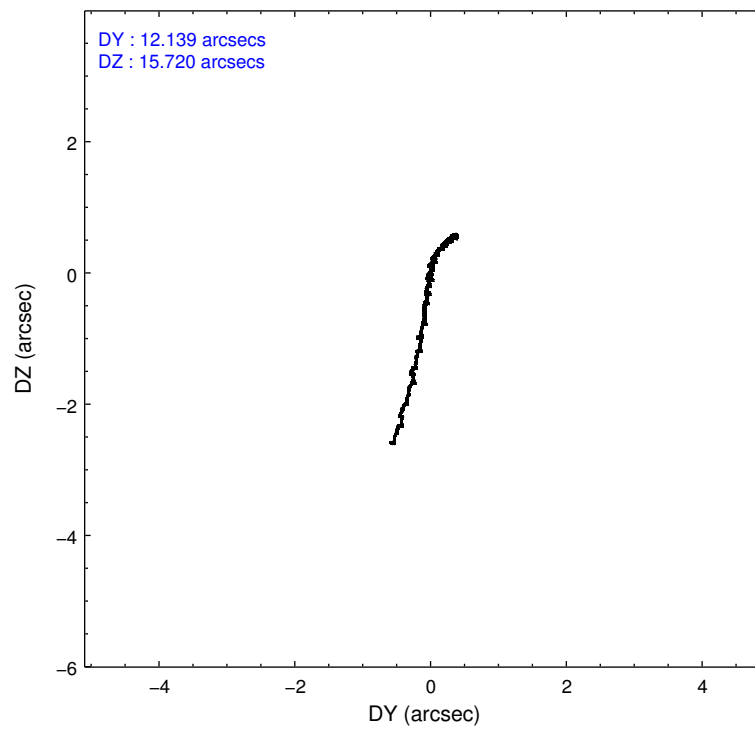
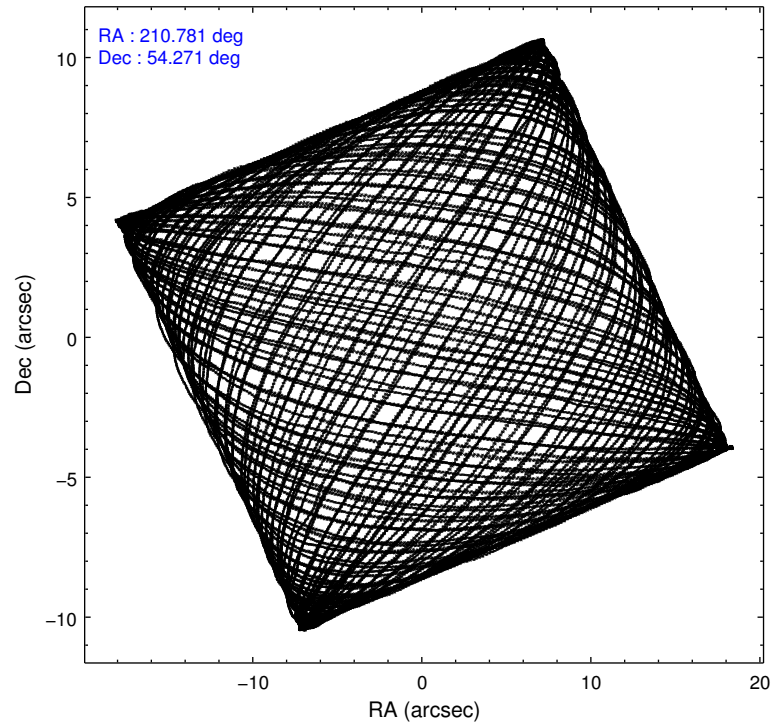
2.1.4 Events

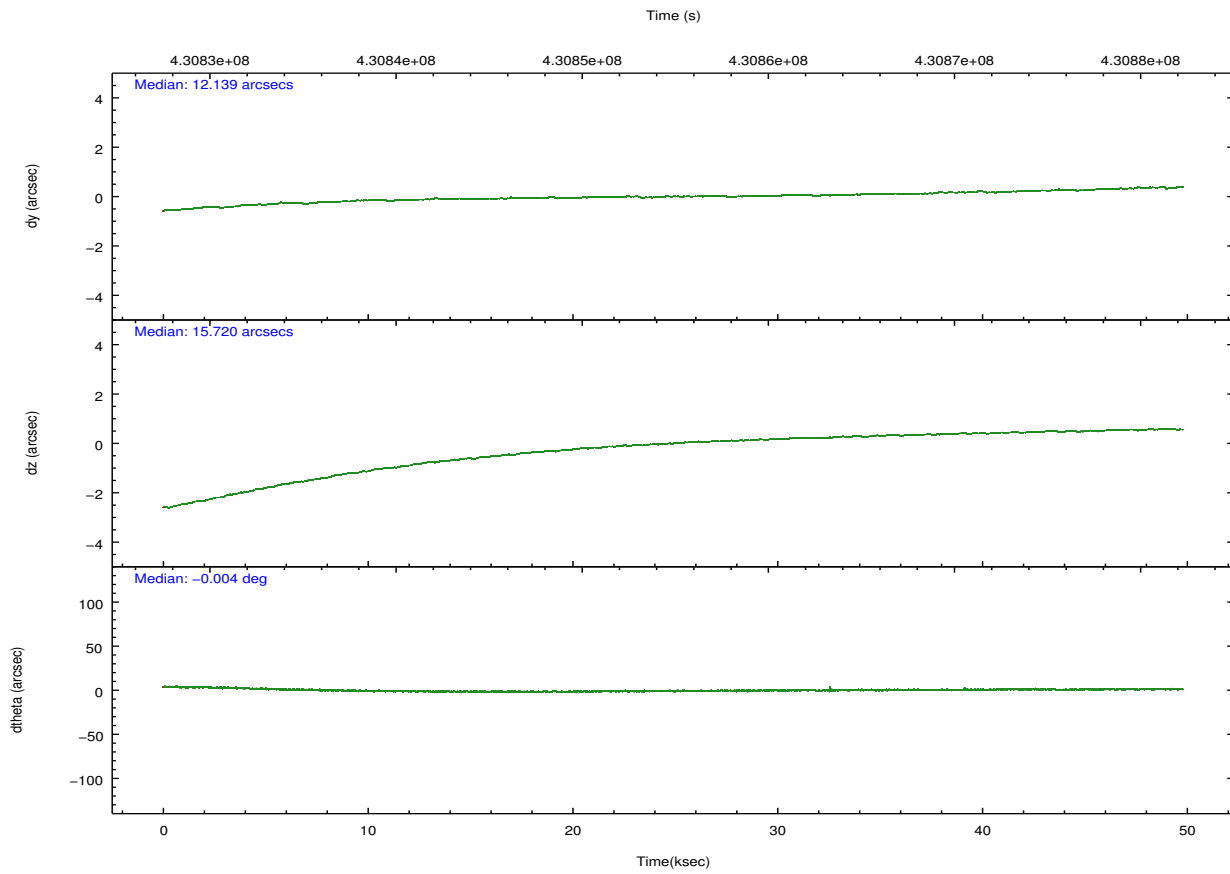
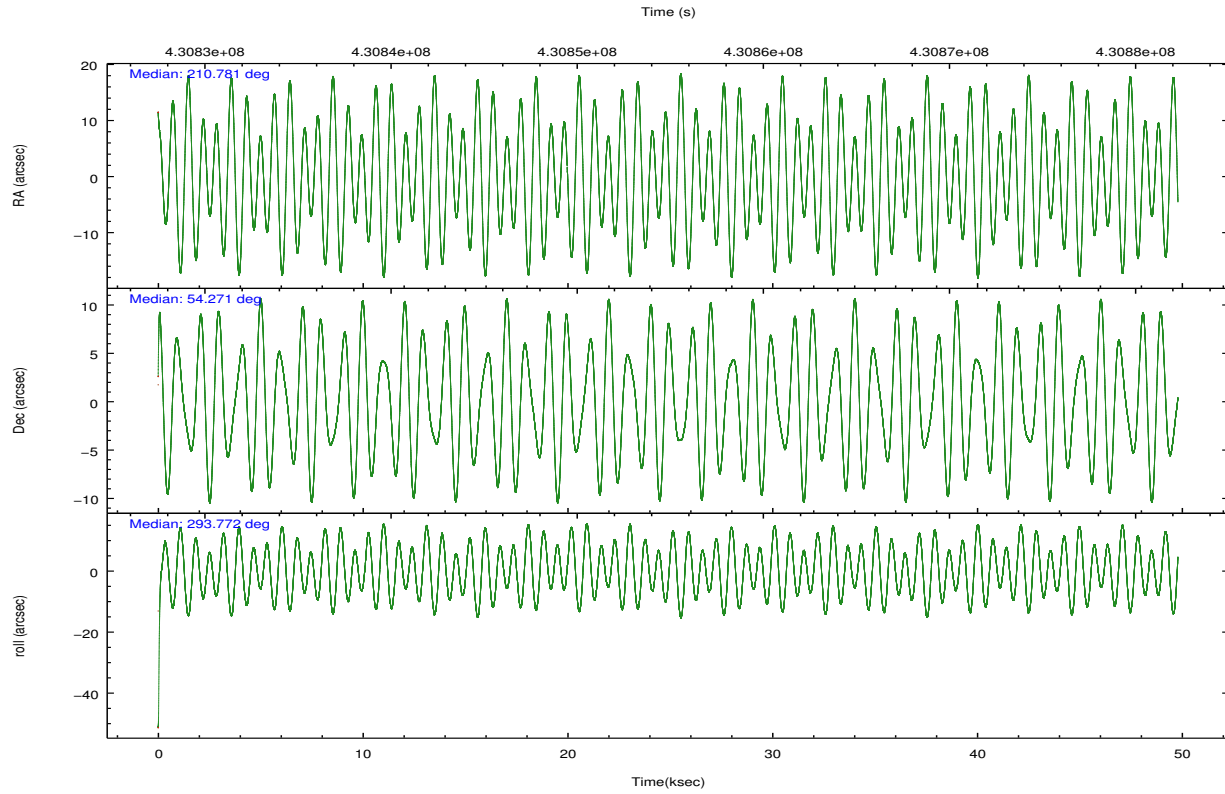
	ccd 2	ccd 3	ccd 5	ccd 6	ccd 7	ccd 8		ccd 2	ccd 3	ccd 5	ccd 6	ccd 7	ccd 8
level 1 events	320103	297691	490976	306688	399860	409896	grade 0 events	12050	11758	27889	12745	18011	32452
rejected events	286049	264712	247372	270222	218025	300529		3%	3%	5%	4%	4%	7%
rejected %	89%	88%	50%	88%	54%	73%	grade 1 events	190	178	919	163	487	340
								0%	0%	0%	0%	0%	0%
							grade 2 events	8636	7248	71957	8238	37804	25728
								2%	2%	14%	2%	9%	6%
							grade 3 events	3472	3593	8867	3741	16121	11246
								1%	1%	1%	1%	4%	2%
							grade 4 events	3408	3557	8367	3733	15720	10639
								1%	1%	1%	1%	3%	2%
							grade 5 events	12752	14641	36430	14636	41233	21557
								3%	4%	7%	4%	10%	5%
							grade 6 events	6490	6823	126543	8012	94194	29307
								2%	2%	25%	2%	23%	7%
							grade 7 events	273105	249893	210004	255420	176290	278627
								85%	83%	42%	83%	44%	67%

2.2 Compared Parameters

Parameter	Planned	Actual	Parameter	Planned	Actual
Instrument	ACIS	ACIS	Obspar format version number	7	7
Detector	ACIS-235678	ACIS-235678	Obspar file type	PREDICTED	ACTUAL
Grating	NONE	NONE	Obspar update status	NONE	UPDATED
Data mode	FAINT	FAINT	CCD I0 on	N	N
Observation mode	POINTING	POINTING	CCD I1 on	N	N
[deg] Pointing RA	210.742850	210.7810169922085	CCD I2 on	Y	Y
[deg] Pointing Dec	54.286708	54.27085621178512	CCD I3 on	Y	Y
[deg] Pointing Roll	293.645448	293.771072946418	CCD S0 on	N	N
[mm] SIM focus pos	-0.684267	-0.6828225247311905	CCD S1 on	O2	Y
[mm] SIM defocus	0	0.001444936568705701	CCD S2 on	Y	Y
[mm] SIM translation stage pos	-190.132523	-190.1425803651734	CCD S3 on	Y	Y
[mm] SIM translation stage offset	0	0.01005778216563158	CCD S4 on	O1	Y
[s] Observation start time (MET)	430830105.184000	430828652.14587	CCD S5 on	N	N
Observation start date	2011-08-27T11:00:39	2011-08-27T10:37:32	Number of optional ACIS chips dropped	0	0
[s] Observation end time (MET)	430879768.184000	430880406.44858	On-chip summing requested	N	N
Observation end date	2011-08-28T00:48:22	2011-08-28T01:00:06	Subarray requested	NONE	NONE
Read mode	TIMED	TIMED	Alternating exposures requested	N	N
			[s] Primary exposure time	0.000000	3.2

2.3 Aspect



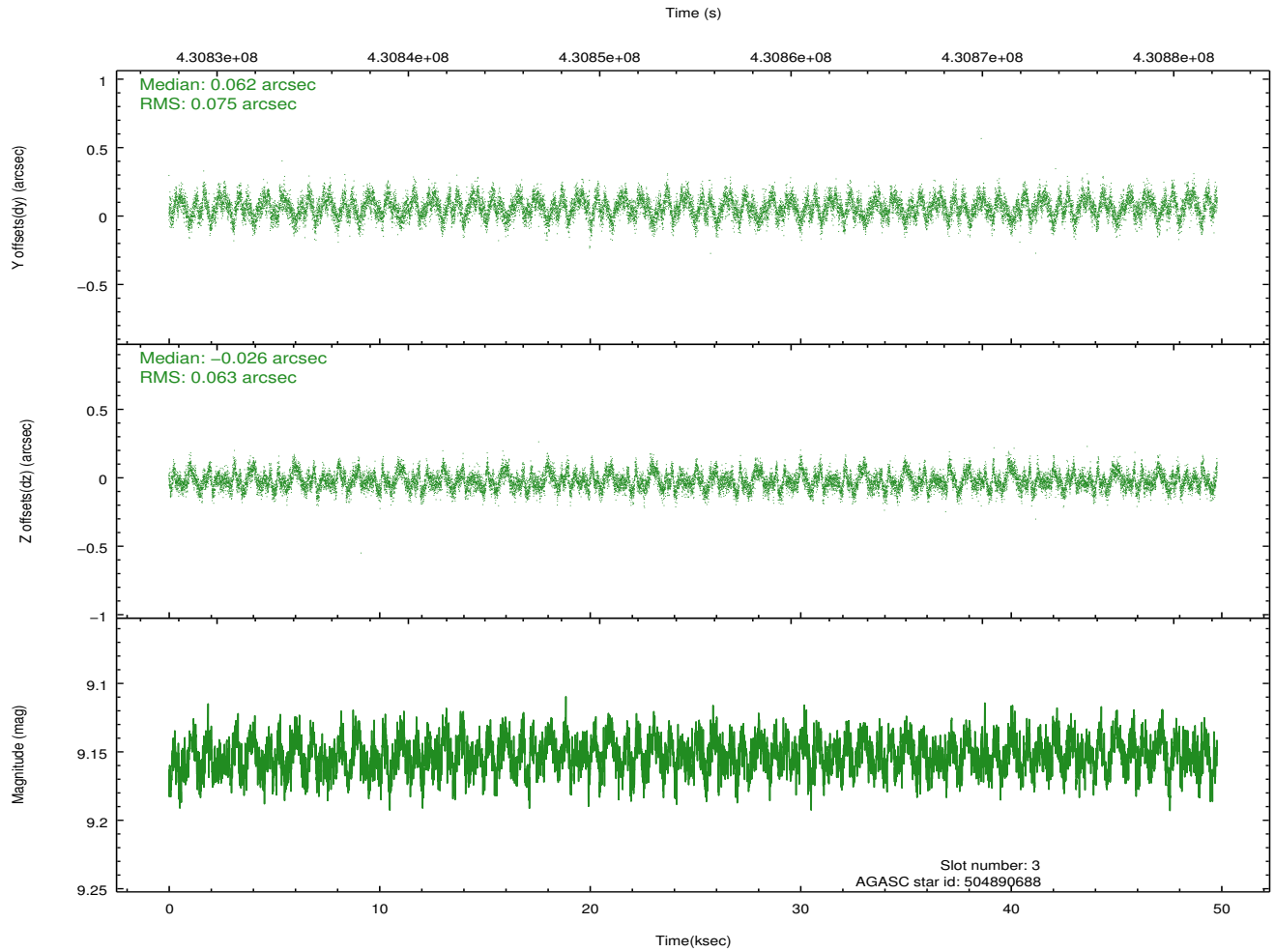
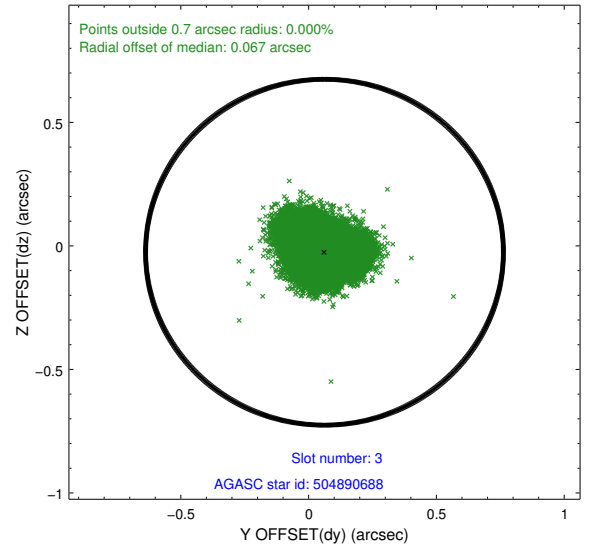
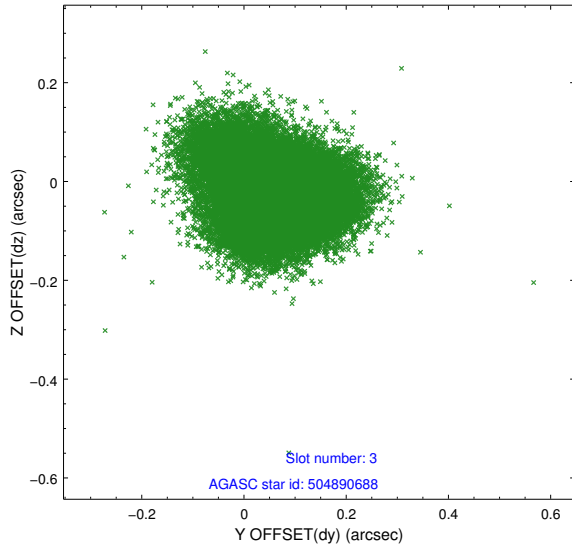


Slot Statistics

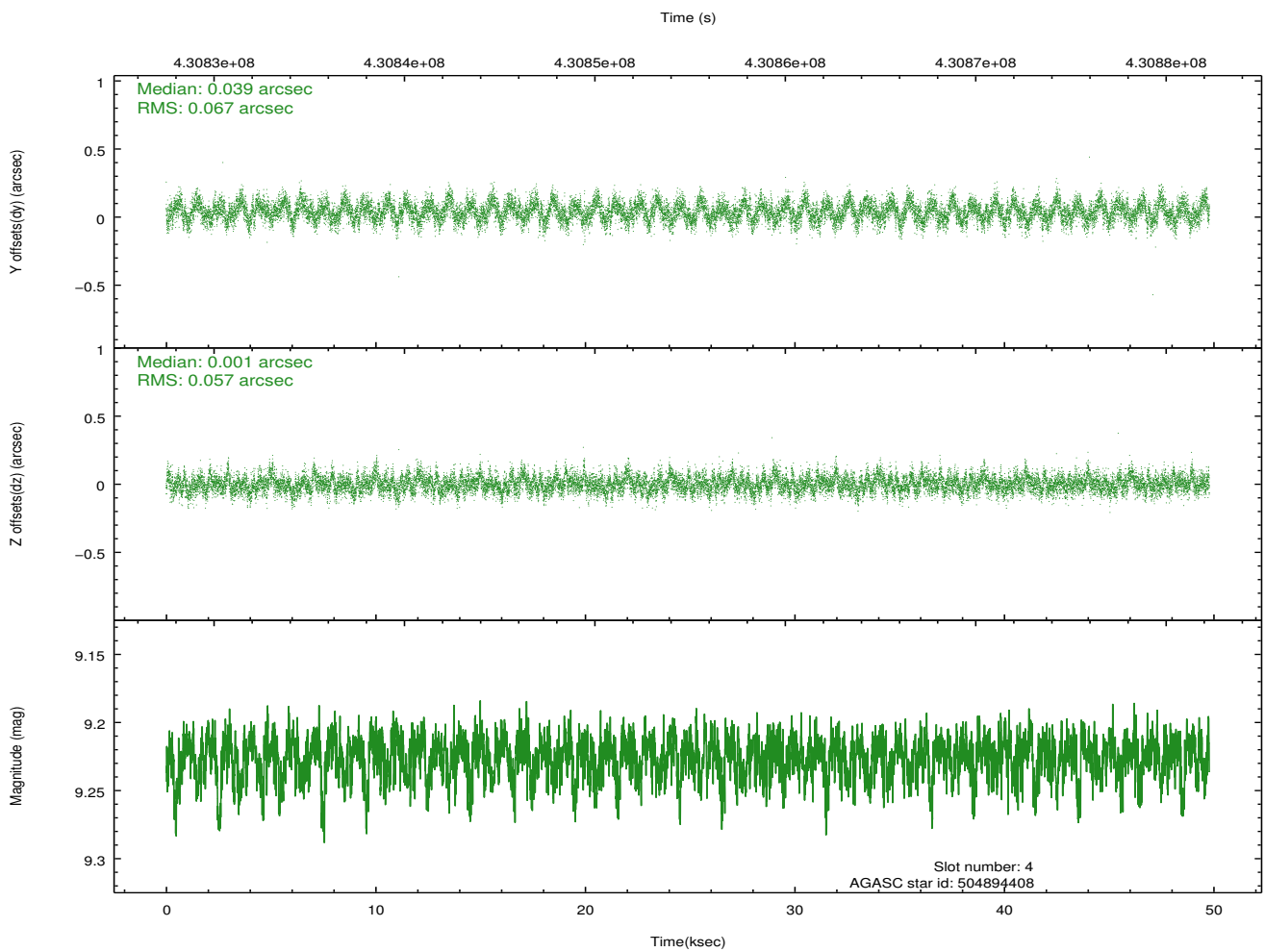
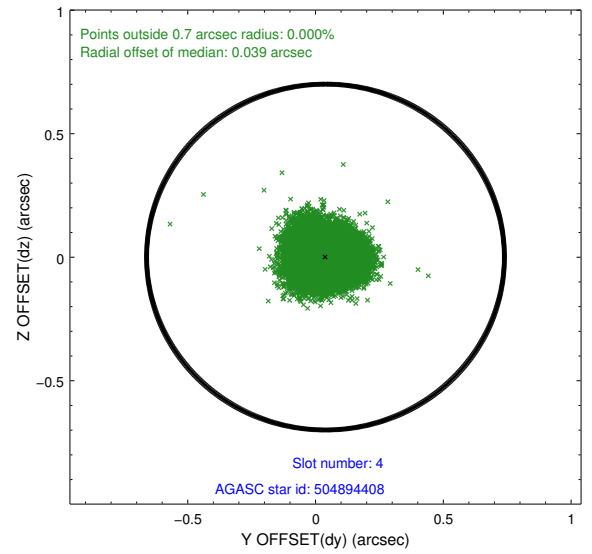
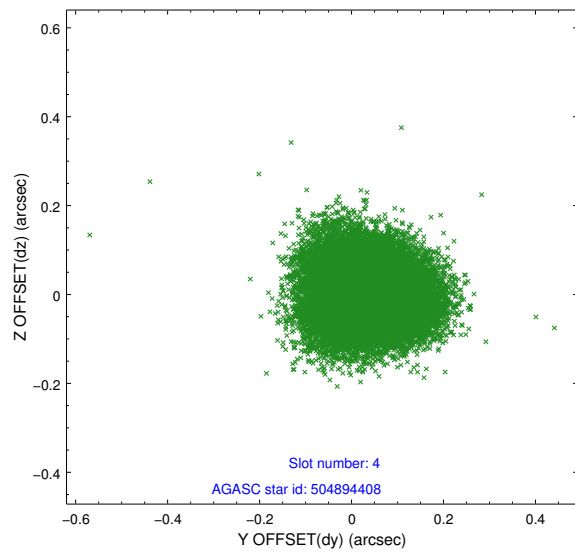
slot	status	id	mag	n_pts	med_dy	med_dz	dr1	dr2	ra	dec	mean_y	mean_z
0	FID	ACIS-S-2	6.91	12146	-0.054	-0.014	0.010	0.029	0.000000	0.000000	-765.07	-1736.74
1	FID	ACIS-S-4	7.00	12145	0.188	0.030	0.009	0.030	0.000000	0.000000	2148.45	171.81
2	FID	ACIS-S-5	7.03	12146	-0.163	-0.007	0.014	0.028	0.000000	0.000000	-1818.05	165.42
3	GUIDE	504890688	9.15	24268	0.062	-0.026	0.105	0.168	211.697686	53.837149	2284.69	1214.83
4	GUIDE	504894408	9.23	24274	0.039	0.001	0.094	0.151	211.942794	54.047749	1785.71	1986.84
5	GUIDE	504894856	8.97	24265	0.110	0.004	0.095	0.155	209.819510	54.132689	-284.55	-2001.09
6	GUIDE	504891480	8.08	24287	-0.173	-0.115	0.082	0.125	210.708012	54.666096	-1280.25	481.31
7	GUIDE	505292416	9.27	24276	-0.039	0.127	0.094	0.156	210.920759	55.040479	-2339.96	1424.70

2.4 Star Slots

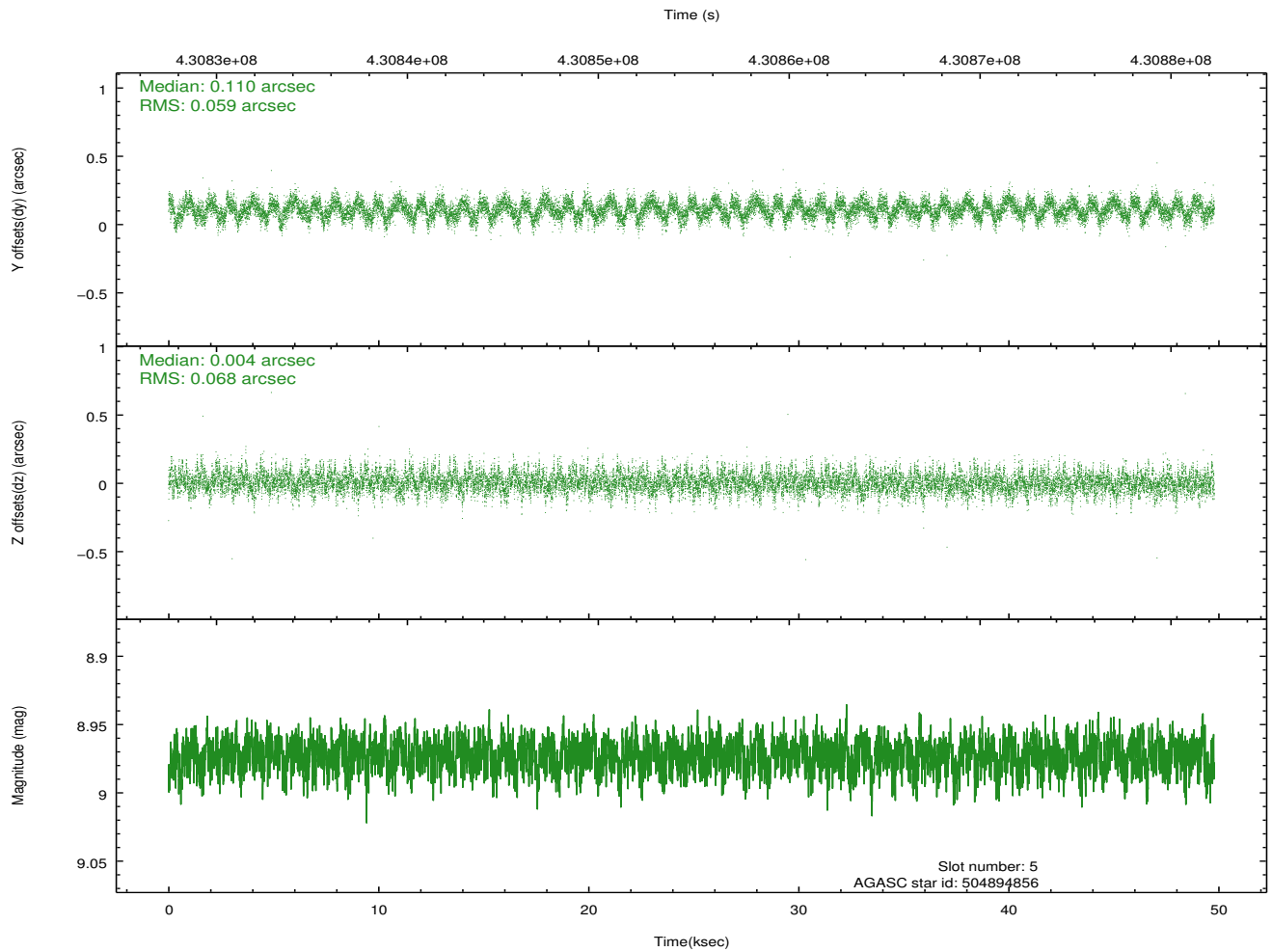
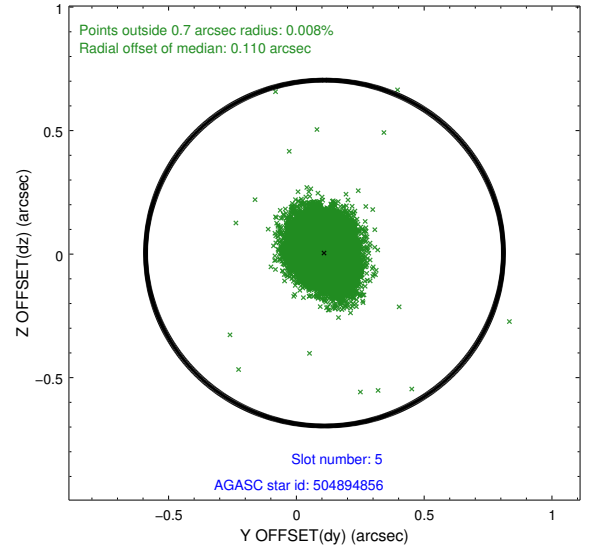
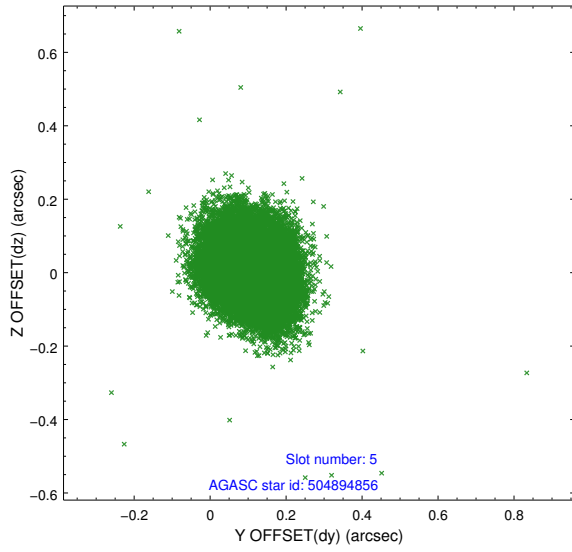
2.4.1 Slot 3



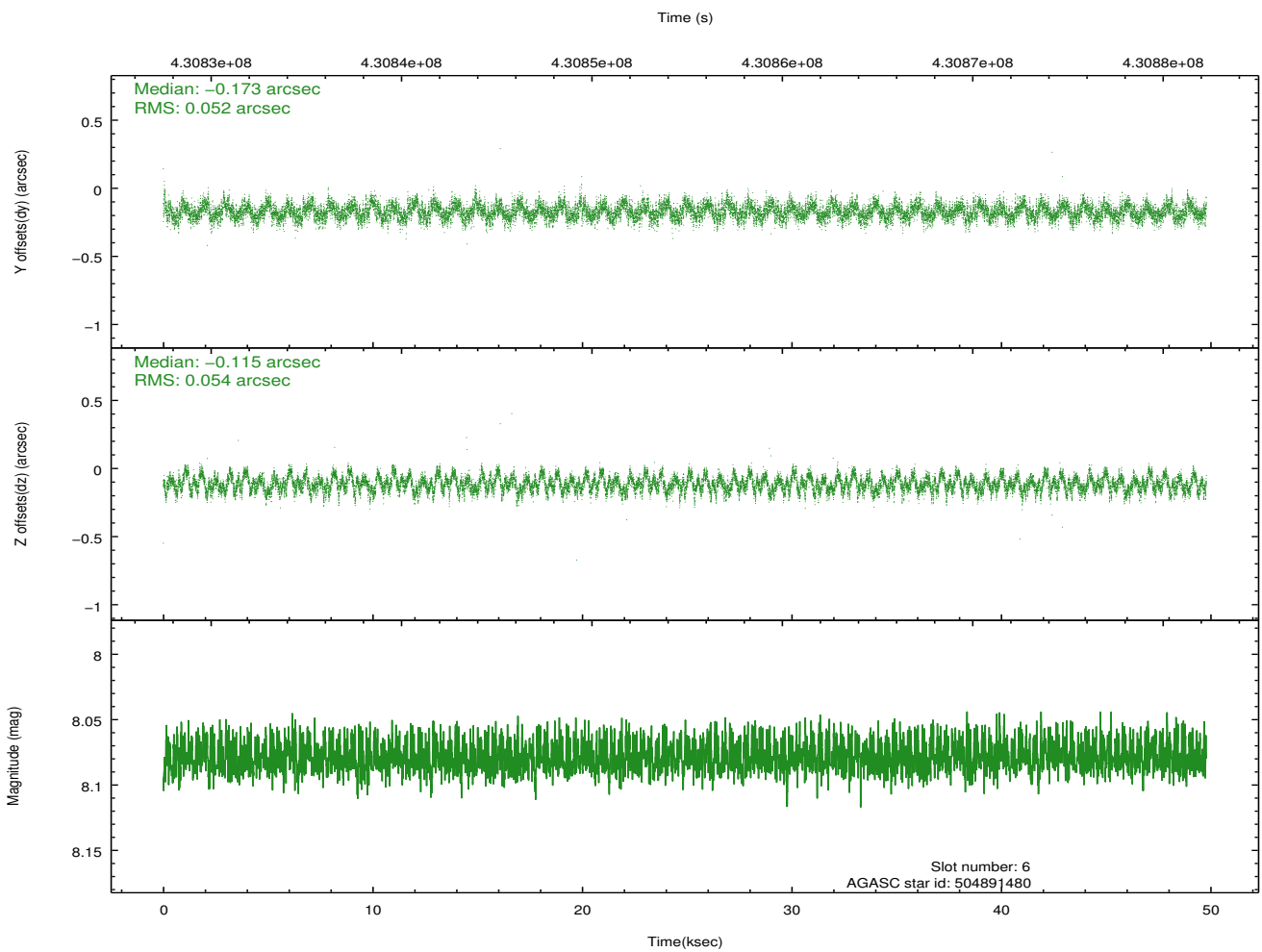
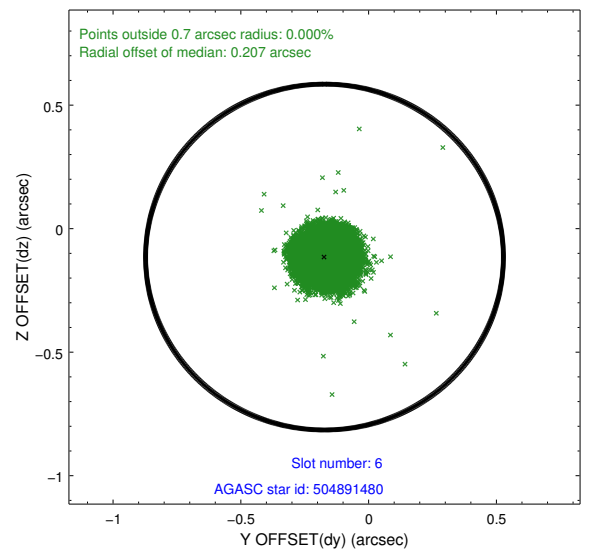
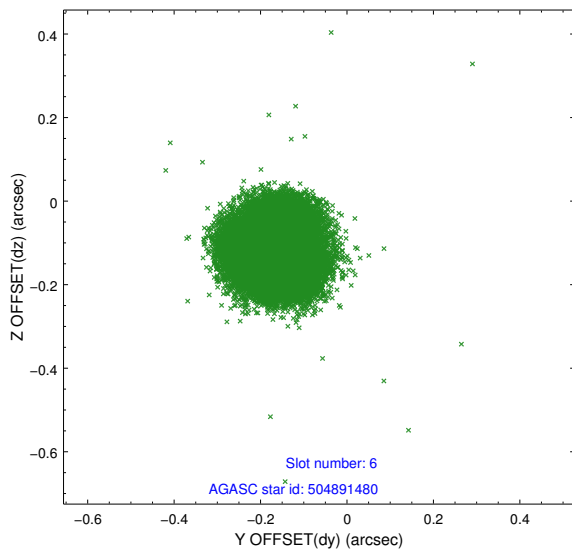
2.4.2 Slot 4



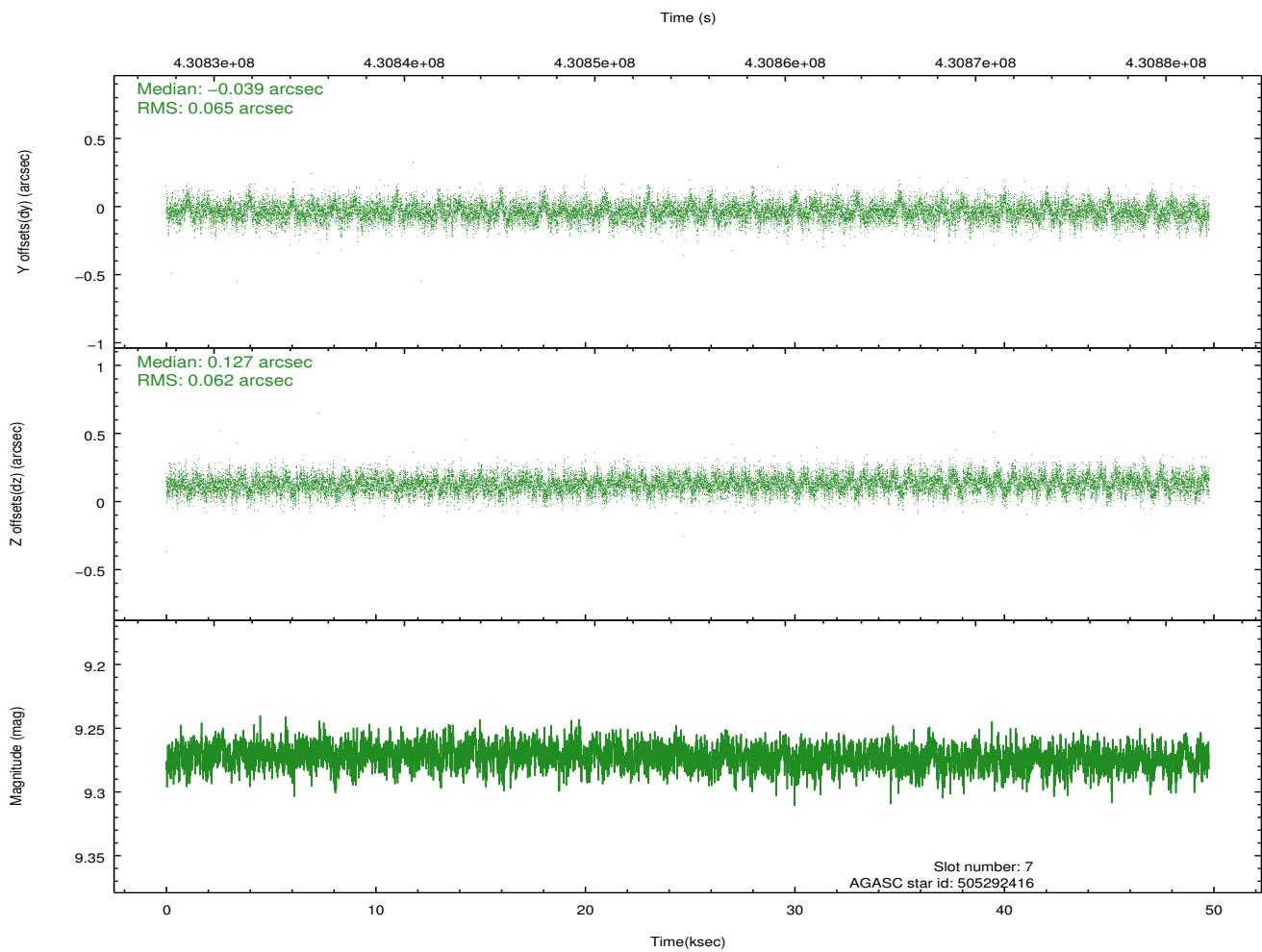
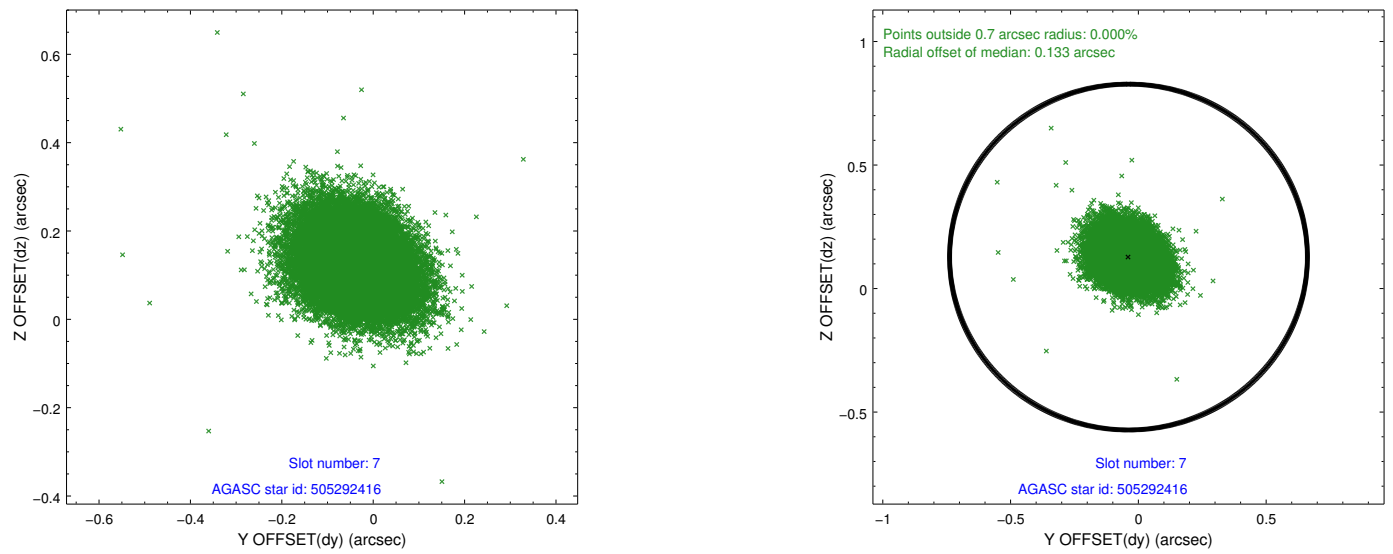
2.4.3 Slot 5



2.4.4 Slot 6

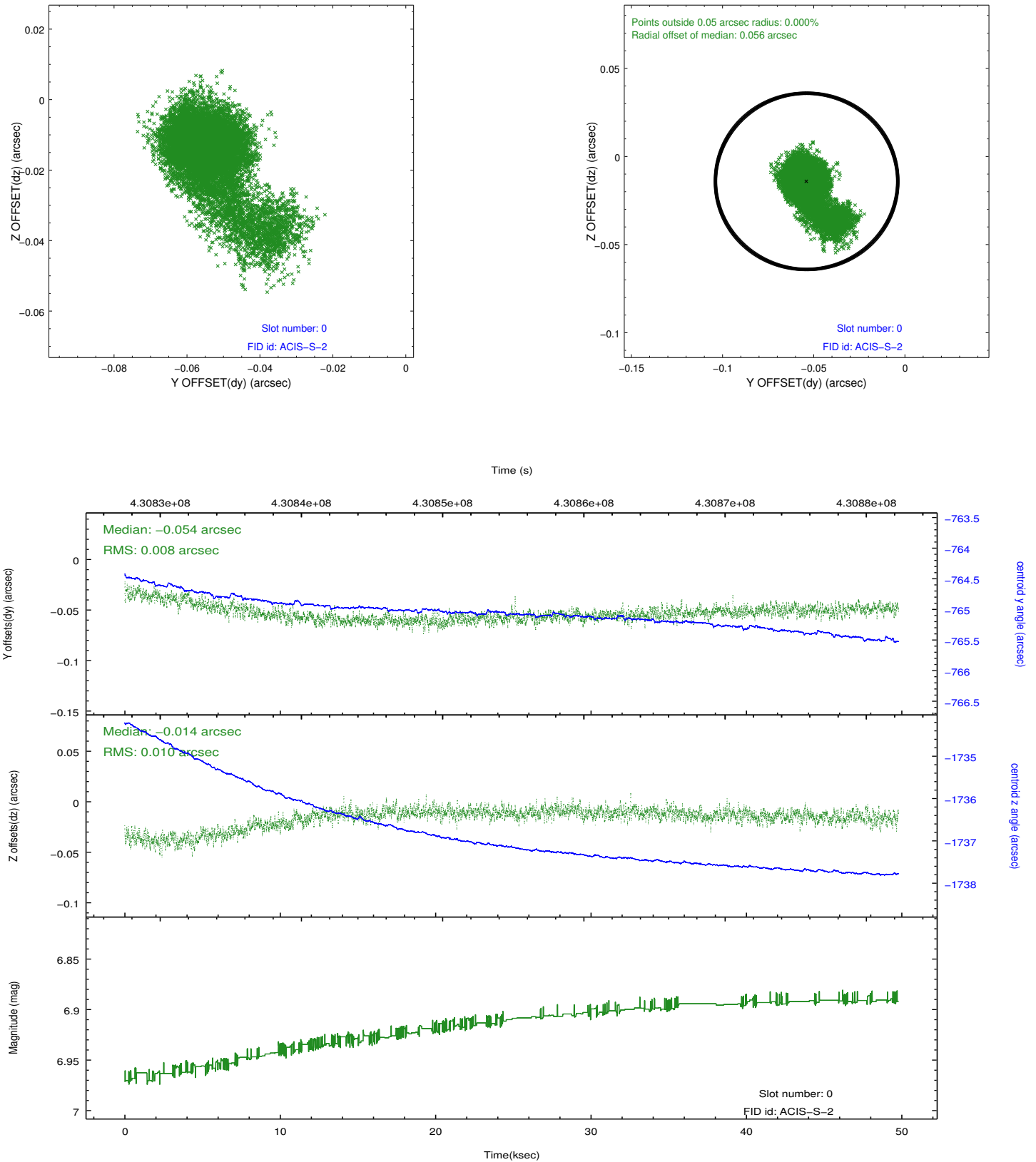


2.4.5 Slot 7

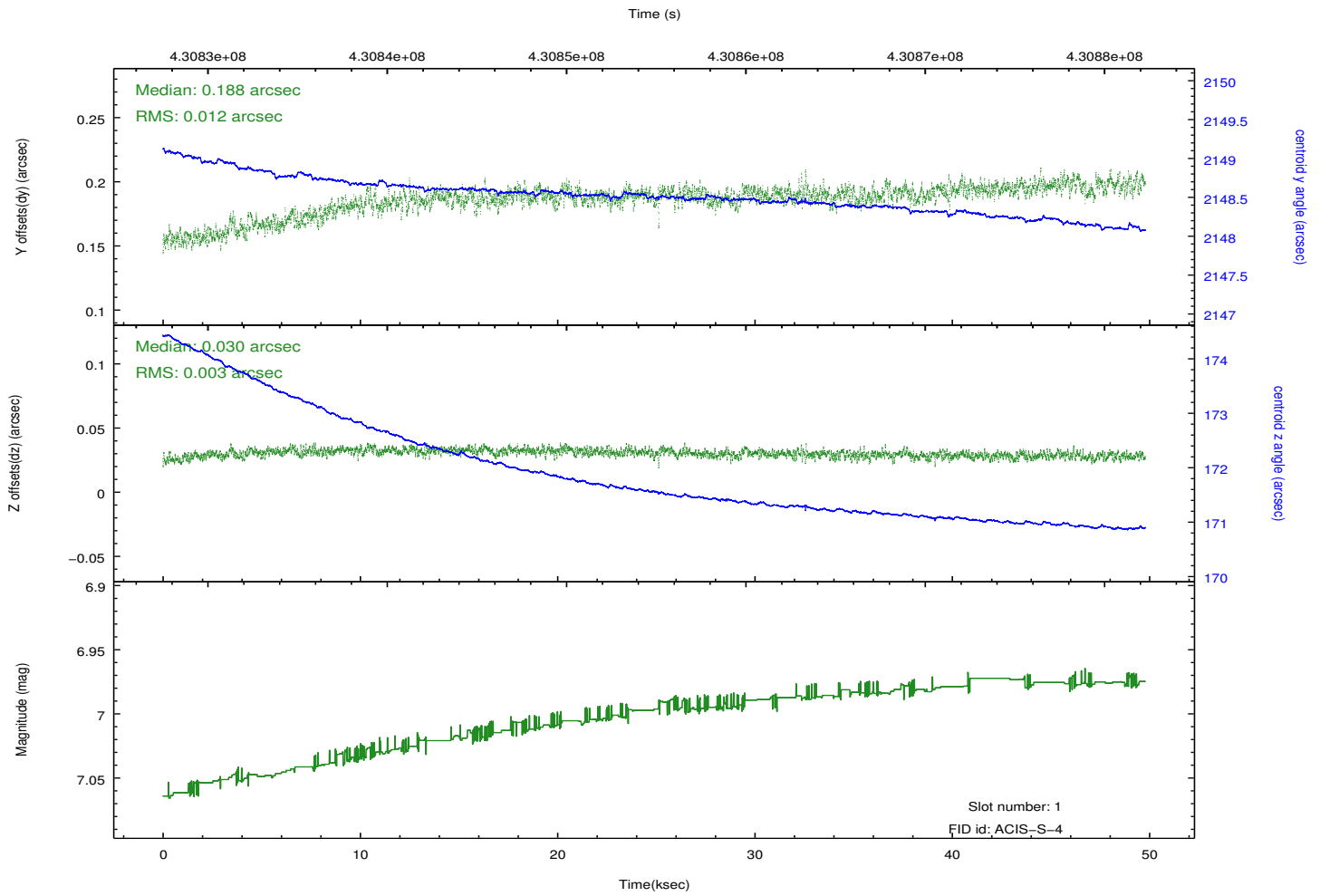
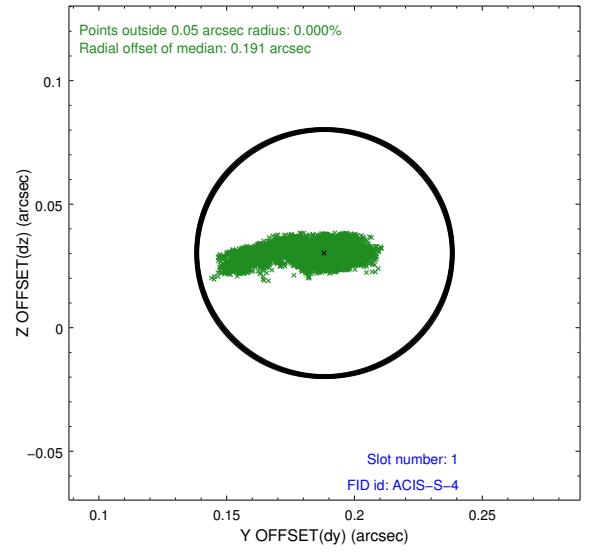
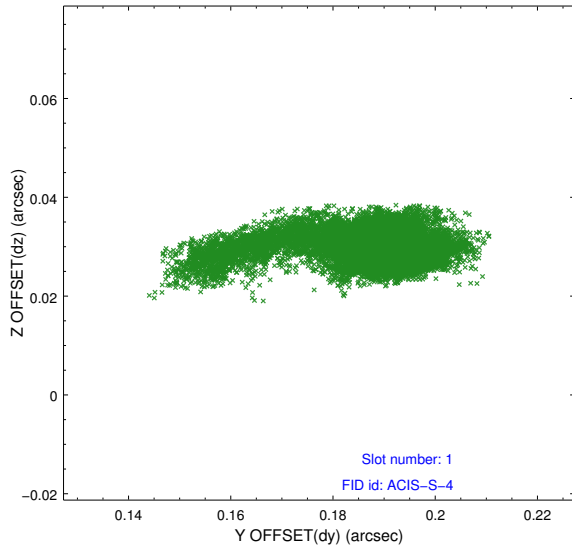


2.5 FID Slots

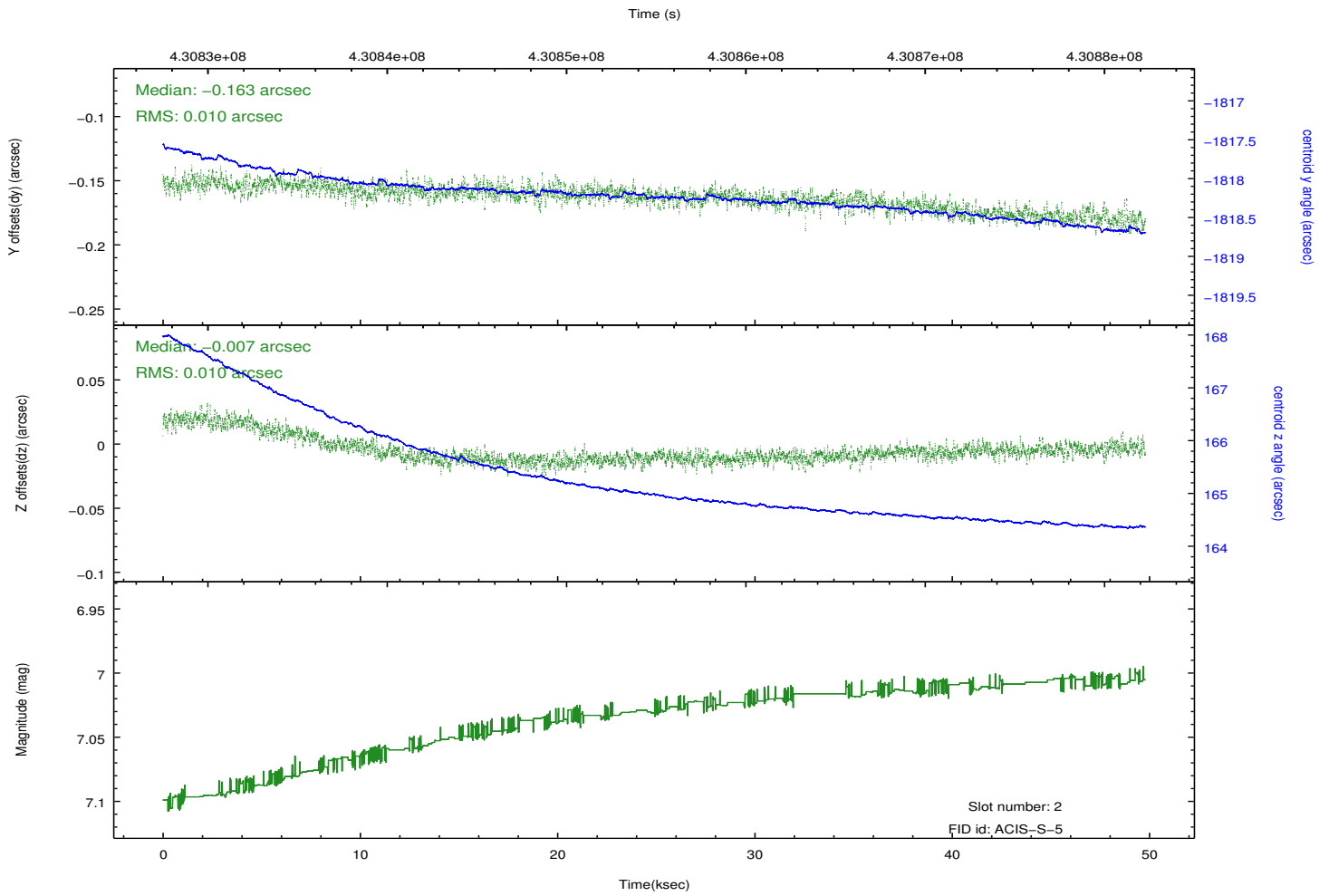
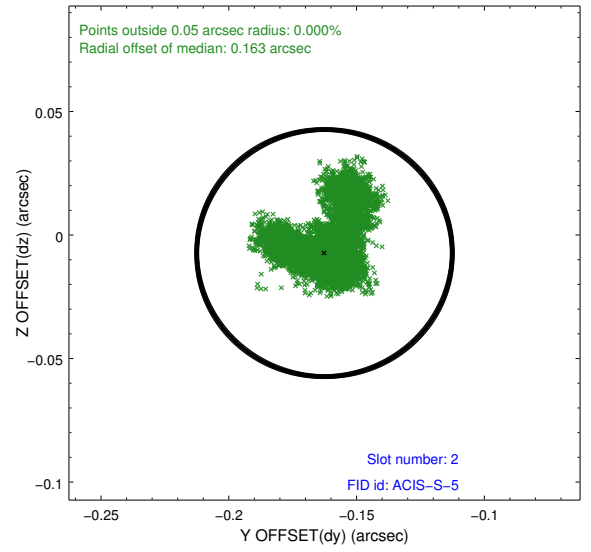
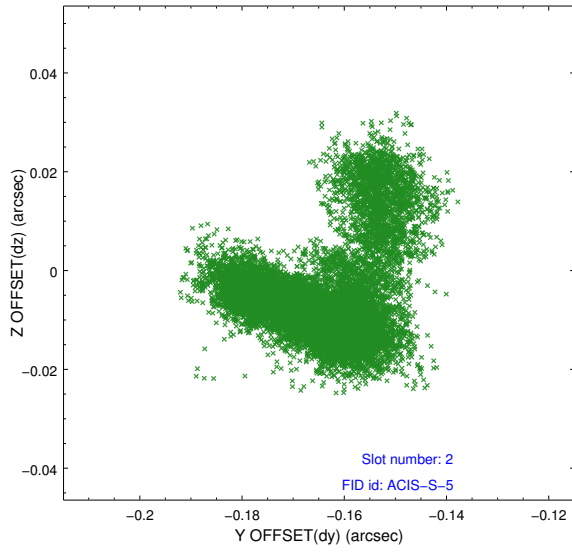
2.5.1 Slot 0



2.5.2 Slot 1



2.5.3 Slot 2



A Summary

A.1 Status

V&V Scientist	Jen Lauer
V&V Date (YYYY-MM-DD)	2012.02.22
V&V Edition	1
V&V Disposition and Status	OK
V&V Charge Time	49.715199814856

A.2 Comments