

V&V Reference Report

L2 ASCDS Version : 8.4.3

Observation 14421 - L2 Version 1
Chandra X-Ray Center

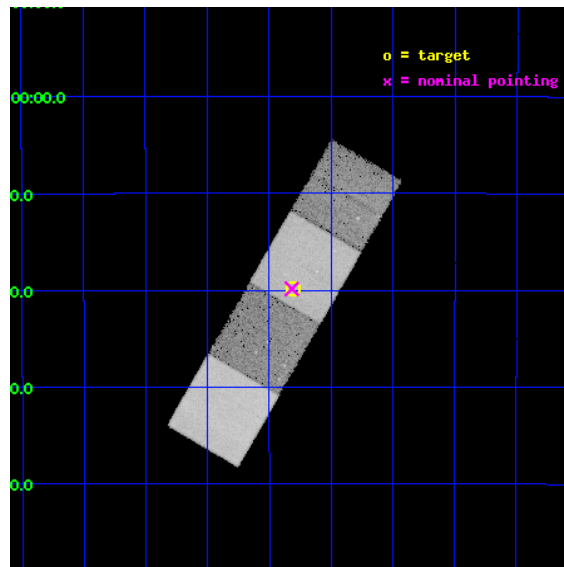
L2 Processing Date : Apr 14 2012

Contents

1	Front	2
2	OBI	3
2.1	OBI	3
2.1.1	Images	3
2.1.2	Bias	3
2.1.3	Parameters	4
2.1.4	Events	4
2.2	Compared Parameters	5
2.3	Aspect	6
2.4	Star Slots	9
2.4.1	Slot 3	9
2.4.2	Slot 4	10
2.4.3	Slot 5	11
2.4.4	Slot 6	12
2.4.5	Slot 7	13
2.5	FID Slots	14
2.5.1	Slot 0	14
2.5.2	Slot 1	15
2.5.3	Slot 2	16
A	Summary	17
A.1	Status	17
A.2	Comments	17

1 Front

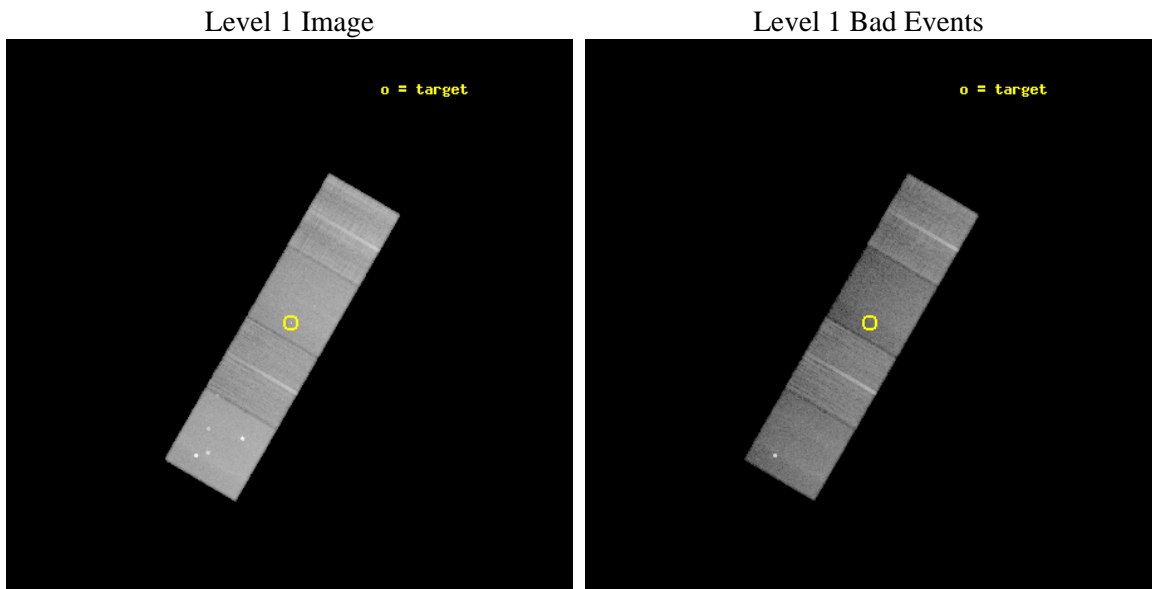
seq_num	200805	Sequence number
obs_id	14421	Observation id
title	ACIS-S observation of TWA 30AB, the second and third closest actively accreting and outflowing low-mass stars	Proposal title
observer	Dr Nicolas Grosso	Principal investigator
object	TWA 30A	Source name
dtcycle	0	
cycle	P	events from which exps? Prim/Second/Both
ra_targ	173.075833	Observer's specified target RA [deg]
dec_targ	-30.331056	Observer's specified target Dec [deg]
ra_nom	173.07932737052	Nominal RA [deg]
dec_nom	-30.331186654057	Nominal Dec [deg]
roll_nom	300.15839447214	Nominal Roll [deg]
revision	1	Processing version of data
ontime	34068.676830351	Sum of GTIs [s]
livetime	33623.544486568	Livetime [s]
ontime5	34068.635790348	Sum of GTIs [s]
ontime6	34065.453740001	Sum of GTIs [s]
ontime7	34068.676830351	Sum of GTIs [s]
ontime8	34068.553710341	Sum of GTIs [s]
l2events	269992	Number of level 2 events



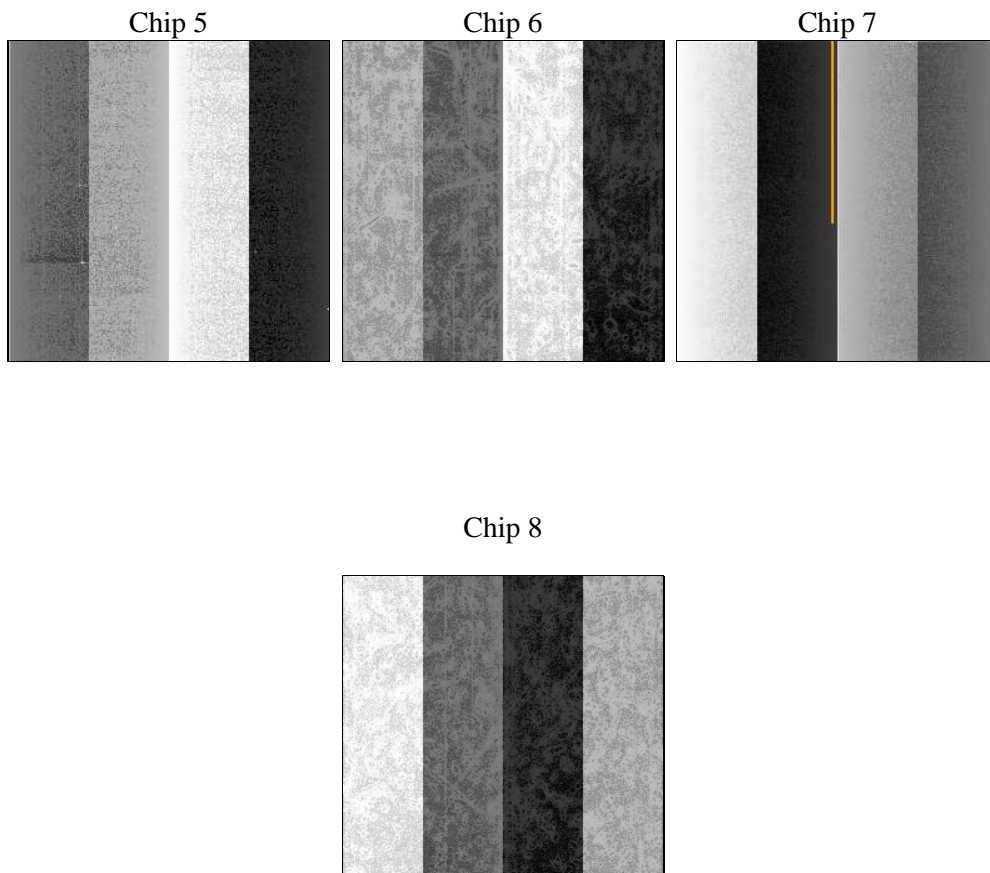
2 OBI

2.1 OBI

2.1.1 Images



2.1.2 Bias



2.1.3 Parameters

obi_num	0	Obi number	sched_exp_time	34000.000000	[s] Scheduled observation exposure time
ascdsver	8.4.3	Processing system revision	ontime	34068.676830351	Sum of GTIs [s]
caldbver	4.4.9	 	ontime5	34068.635790348	Sum of GTIs [s]
date	2012-04-14T08:26:18	Date and time of file creation	ontime6	34065.453740001	Sum of GTIs [s]
revision	1	Processing version of data	ontime7	34068.676830351	Sum of GTIs [s]
			ontime8	34068.553710341	Sum of GTIs [s]
			l1events	915889	Number of level 1 events

2.1.4 Events

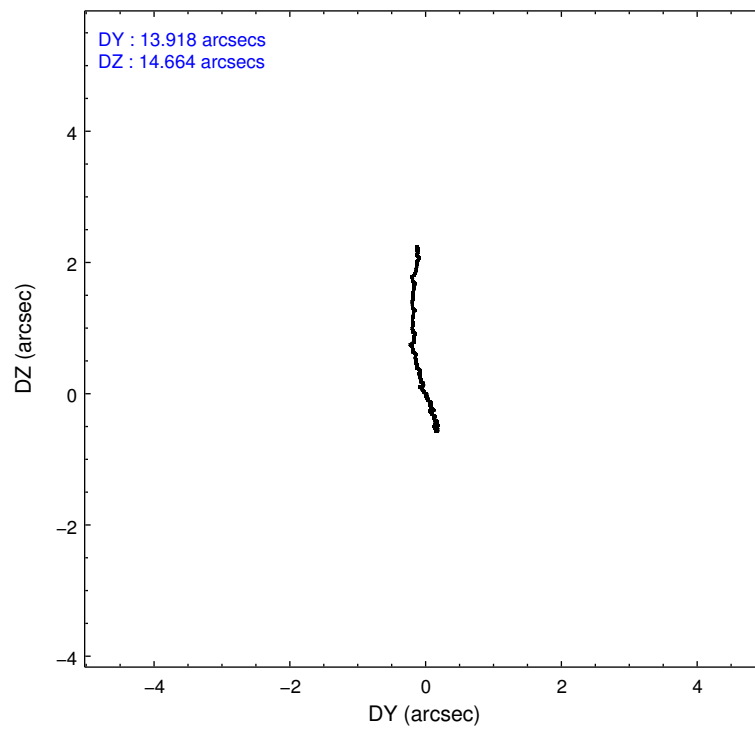
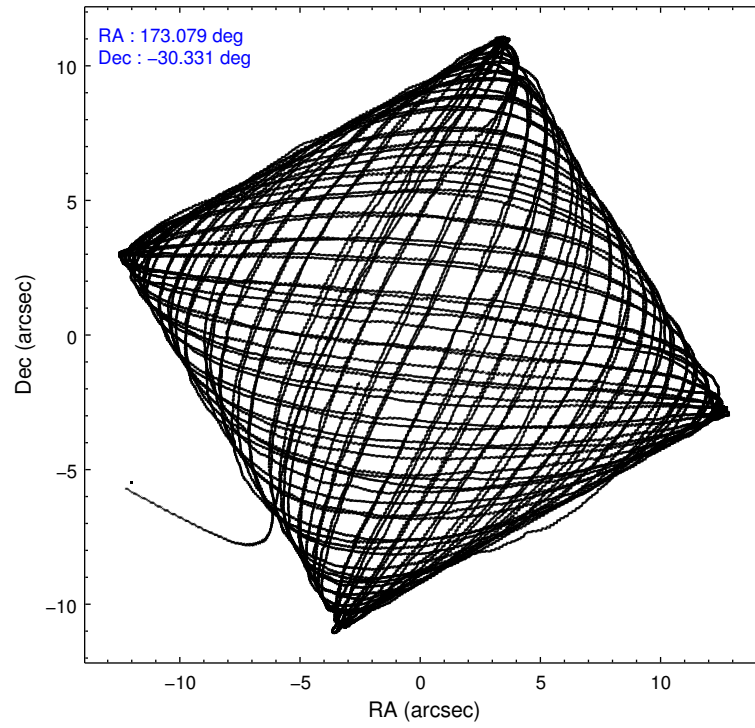
	ccd 5	ccd 6	ccd 7	ccd 8
level 1 events	283207	183500	208686	240496
rejected events	133285	161616	108419	173998
rejected %	47%	88%	51%	72%

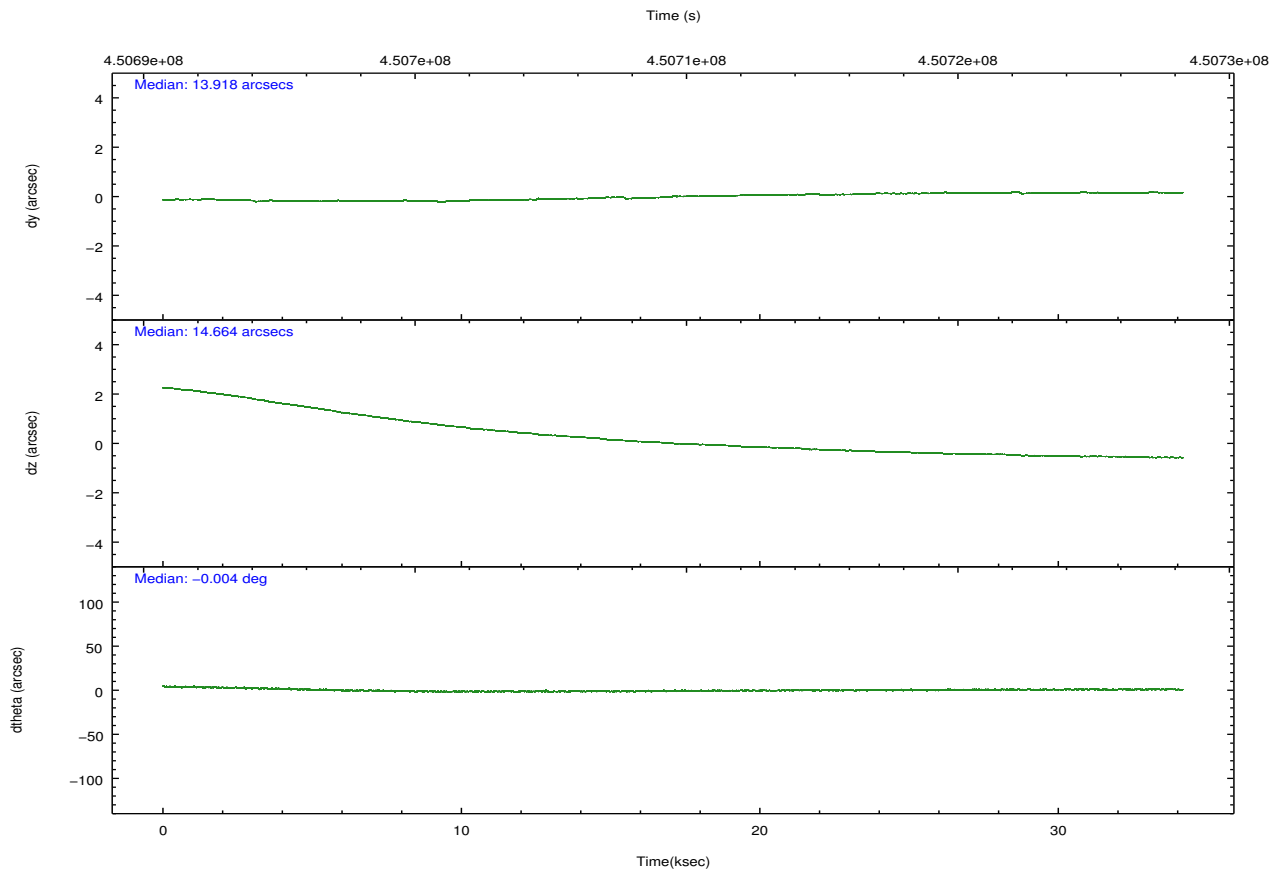
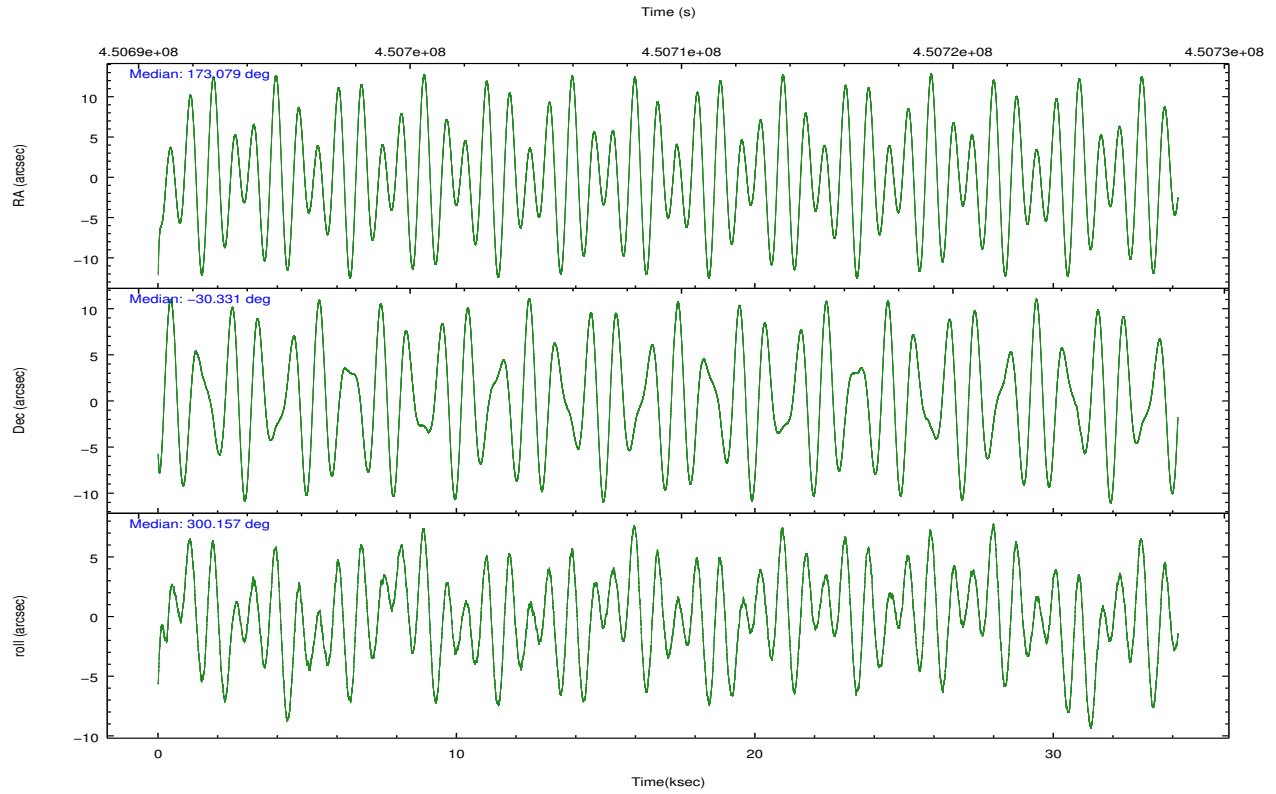
	ccd 5	ccd 6	ccd 7	ccd 8
grade 0 events	21022	7932	9959	18336
	7%	4%	4%	7%
grade 1 events	635	110	320	181
	0%	0%	0%	0%
grade 2 events	45538	4999	21496	16253
	16%	2%	10%	6%
grade 3 events	5927	2150	9060	7109
	2%	1%	4%	2%
grade 4 events	5175	2222	8984	6742
	1%	1%	4%	2%
grade 5 events	22728	7902	22292	12387
	8%	4%	10%	5%
grade 6 events	72287	4587	50794	18063
	25%	2%	24%	7%
grade 7 events	109895	153598	85781	161425
	38%	83%	41%	67%

2.2 Compared Parameters

Parameter	Planned	Actual	Parameter	Planned	Actual
Instrument	ACIS	ACIS	Obspar format version number	7	7
Detector	ACIS-5678	ACIS-5678	Obspar file type	PREDICTED	ACTUAL
Grating	NONE	NONE	Obspar update status	NONE	UPDATED
Data mode	VFAINT	VFAINT	Number of optional ACIS chips dropped	0	0
Observation mode	POINTING	POINTING	On-chip summing requested	N	N
[deg] Pointing RA	173.051649	173.0793273705154	Subarray requested	NONE	NONE
[deg] Pointing Dec	-30.317901	-30.33118665405701	Alternating exposures requested	N	N
[deg] Pointing Roll	299.987787	300.1583944721387	[s] Primary exposure time	0.000000	3.1
[mm] SIM focus pos	-0.684267	-0.6828225247311905			
[mm] SIM defocus	0	0.001444936568705701			
[mm] SIM translation stage pos	-190.132523	-190.1400660498719			
[mm] SIM translation stage offset	0	0.00754346686406393			
[s] Observation start time (MET)	450692592.184000	450691386.39356			
Observation start date	2012-04-13T08:22:06	2012-04-13T08:03:06			
[s] Observation end time (MET)	450726592.184000	450727737.508			
Observation end date	2012-04-13T17:48:46	2012-04-13T18:08:57			
Read mode	TIMED	TIMED			

2.3 Aspect



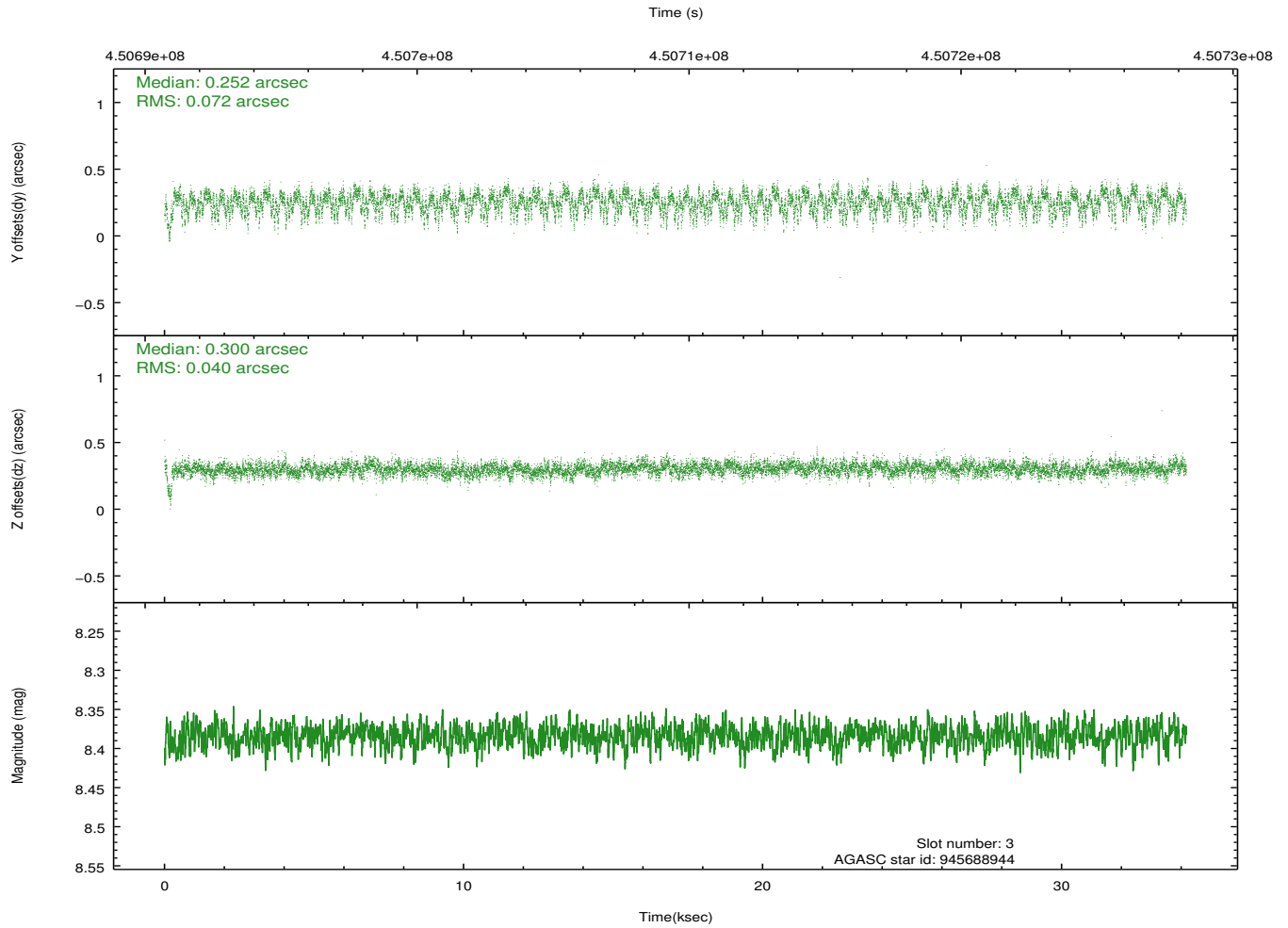
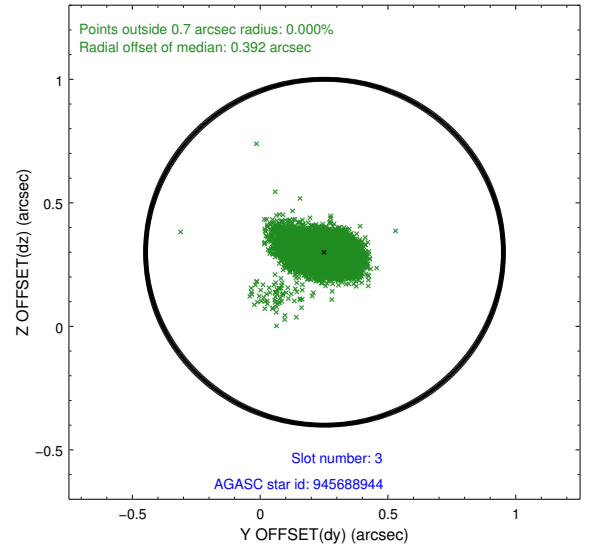
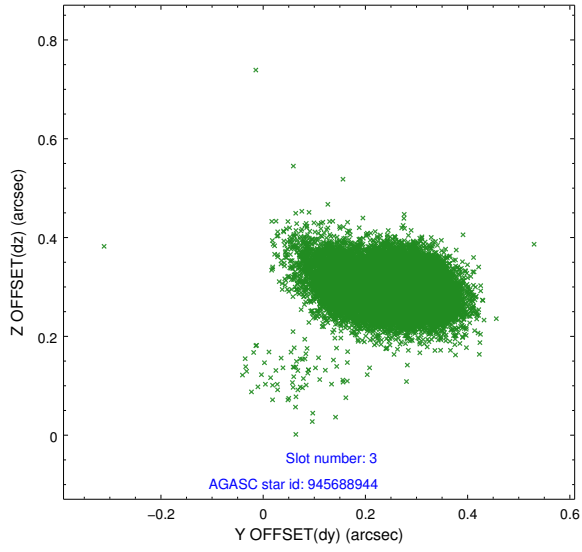


Slot Statistics

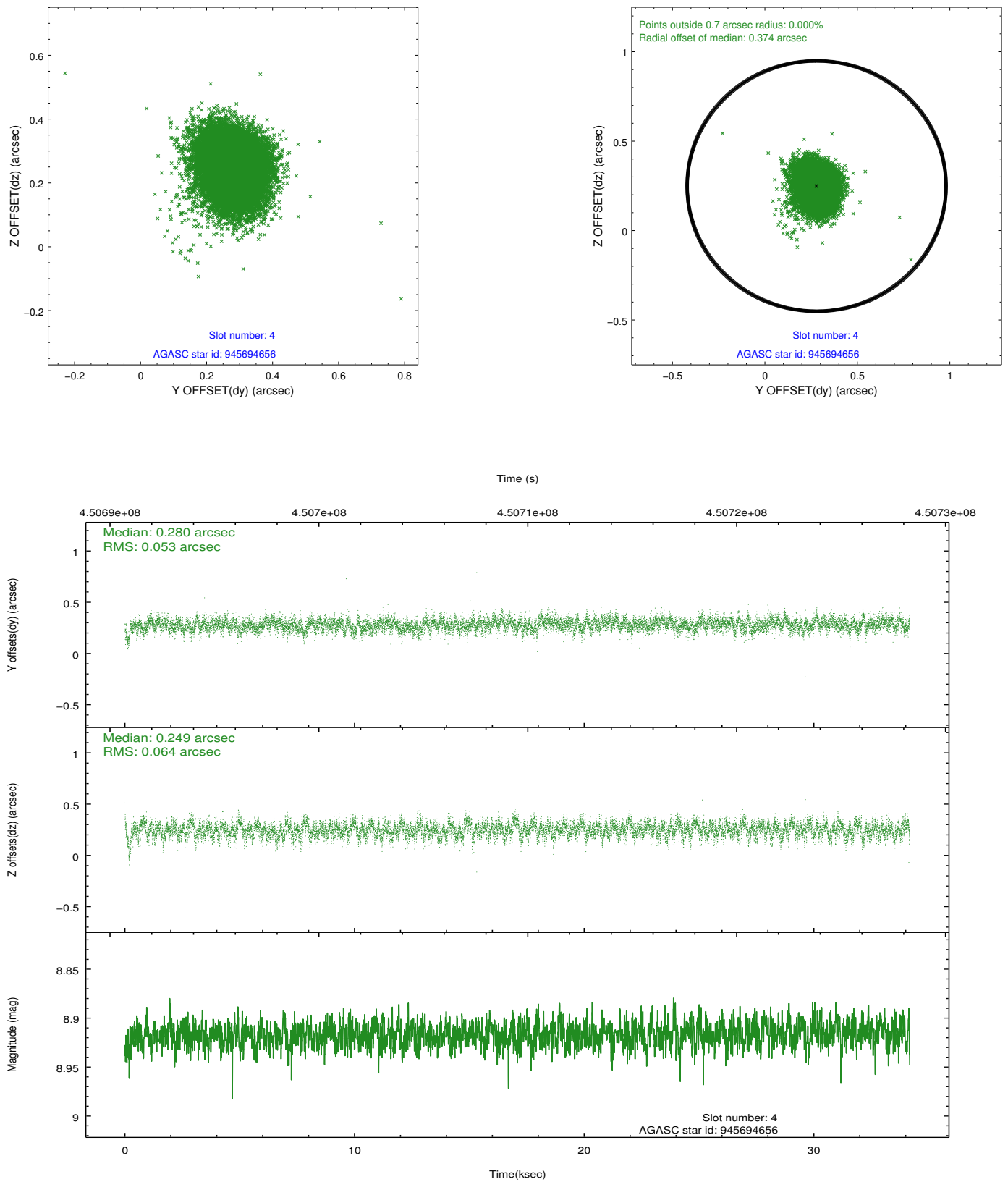
slot	status	id	mag	n_pts	med_dy	med_dz	dr1	dr2	ra	dec	mean_y	mean_z
0	FID	ACIS-S-2	6.93	8334	-0.082	-0.020	0.014	0.030	0.000000	0.000000	-766.93	-1736.37
1	FID	ACIS-S-4	7.01	8334	0.224	0.045	0.010	0.018	0.000000	0.000000	2146.64	172.12
2	FID	ACIS-S-5	7.04	8334	-0.176	-0.014	0.012	0.021	0.000000	0.000000	-1819.81	165.79
3	GUIDE	945688944	8.38	16662	0.252	0.300	0.085	0.147	172.895199	-31.109720	2228.93	-1842.20
4	GUIDE	945694656	8.92	16659	0.280	0.249	0.088	0.143	172.757069	-30.263877	-624.99	-696.77
5	GUIDE	945819400	8.33	16662	0.111	0.053	0.074	0.117	173.442261	-30.654042	1653.97	441.12
6	GUIDE	873339424	8.84	16657	-0.017	0.111	0.090	0.150	173.119909	-29.531340	-2345.62	1600.57
7	GUIDE	945819352	7.48	16595	-0.618	-0.714	0.063	0.108	173.761944	-30.724537	2372.01	1168.34

2.4 Star Slots

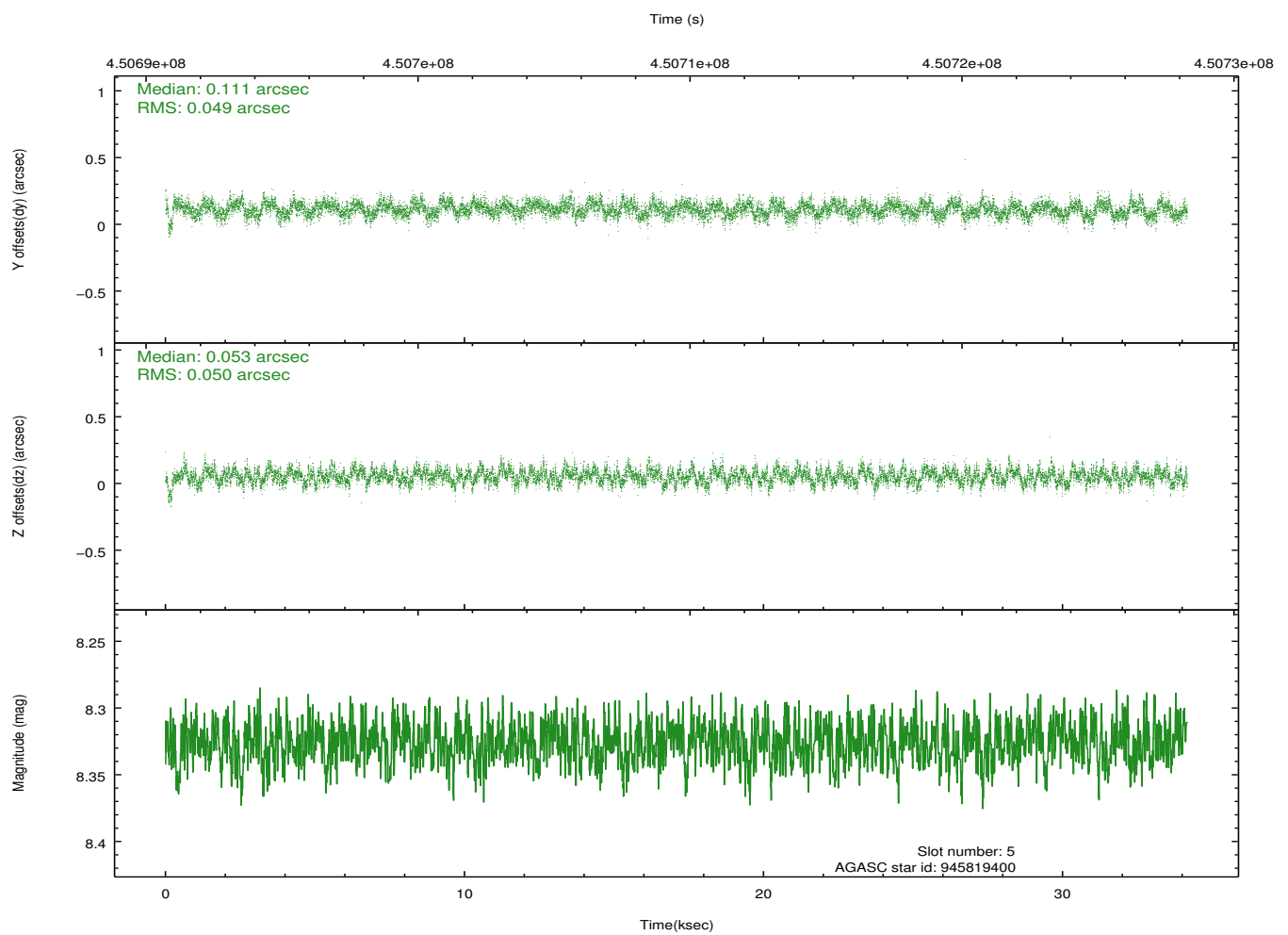
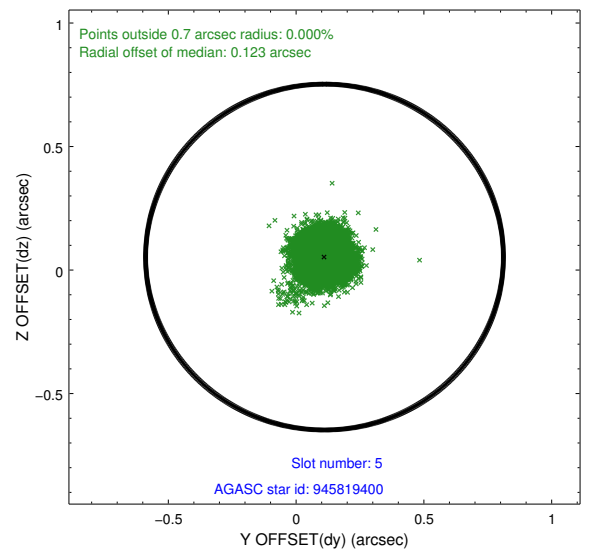
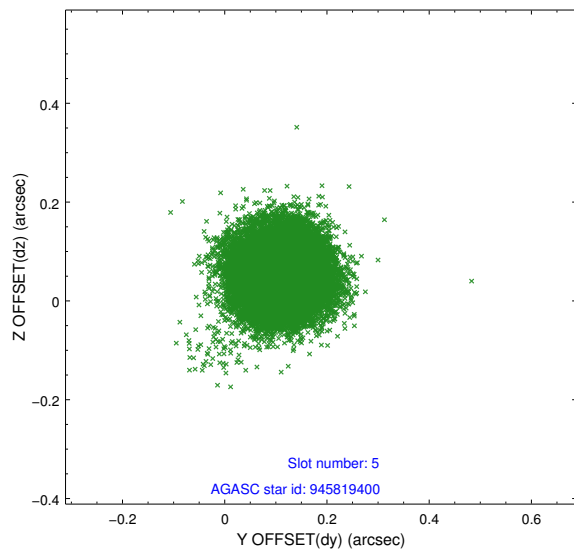
2.4.1 Slot 3



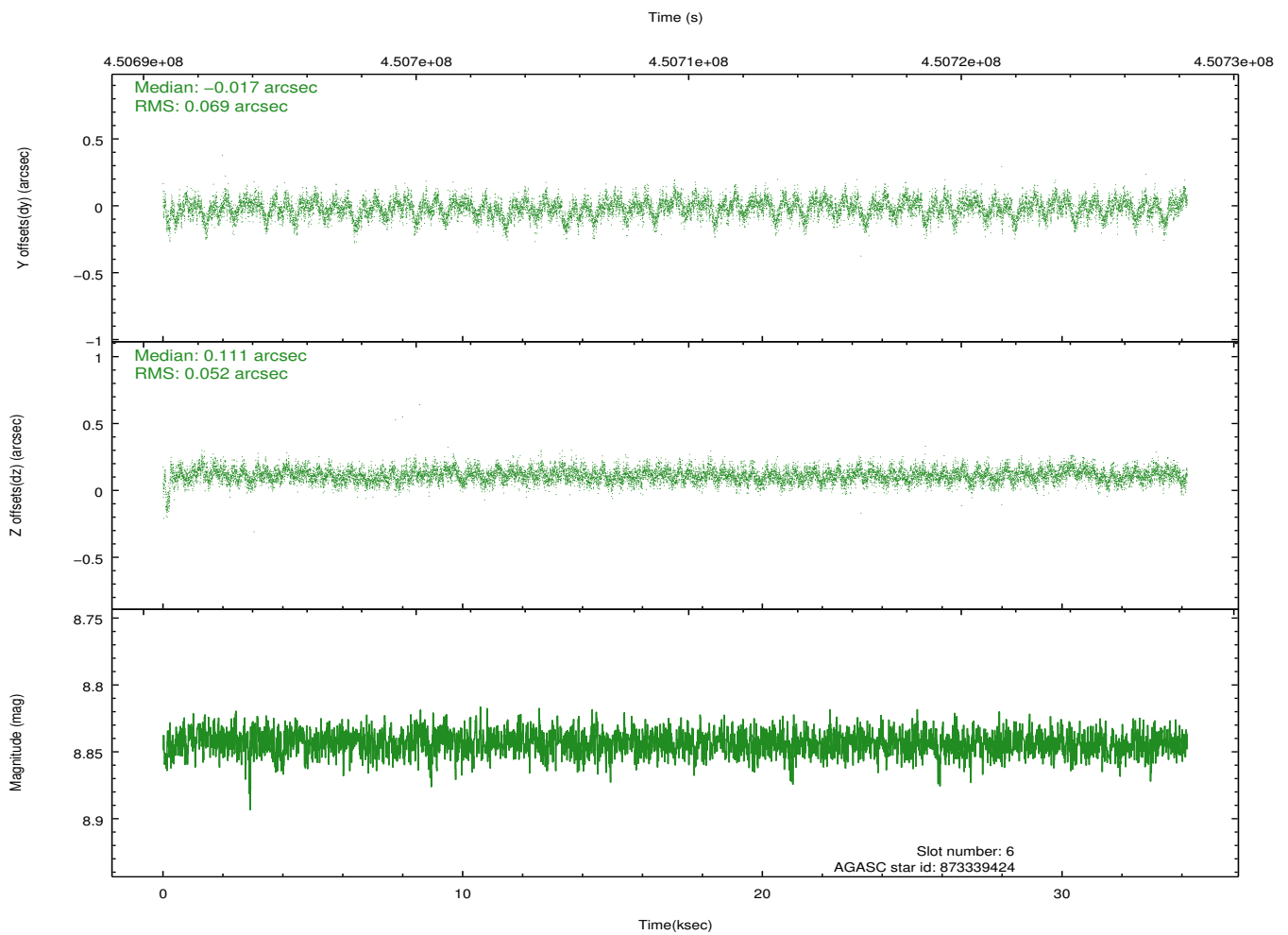
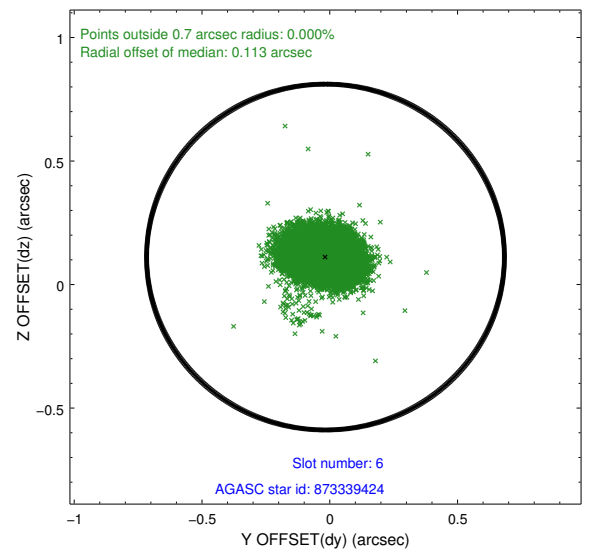
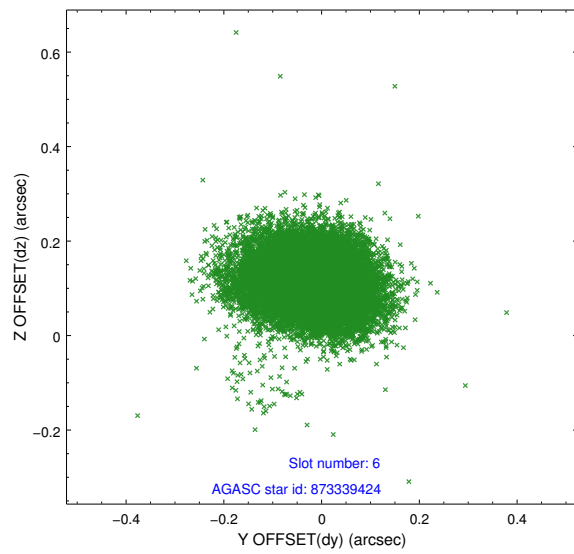
2.4.2 Slot 4



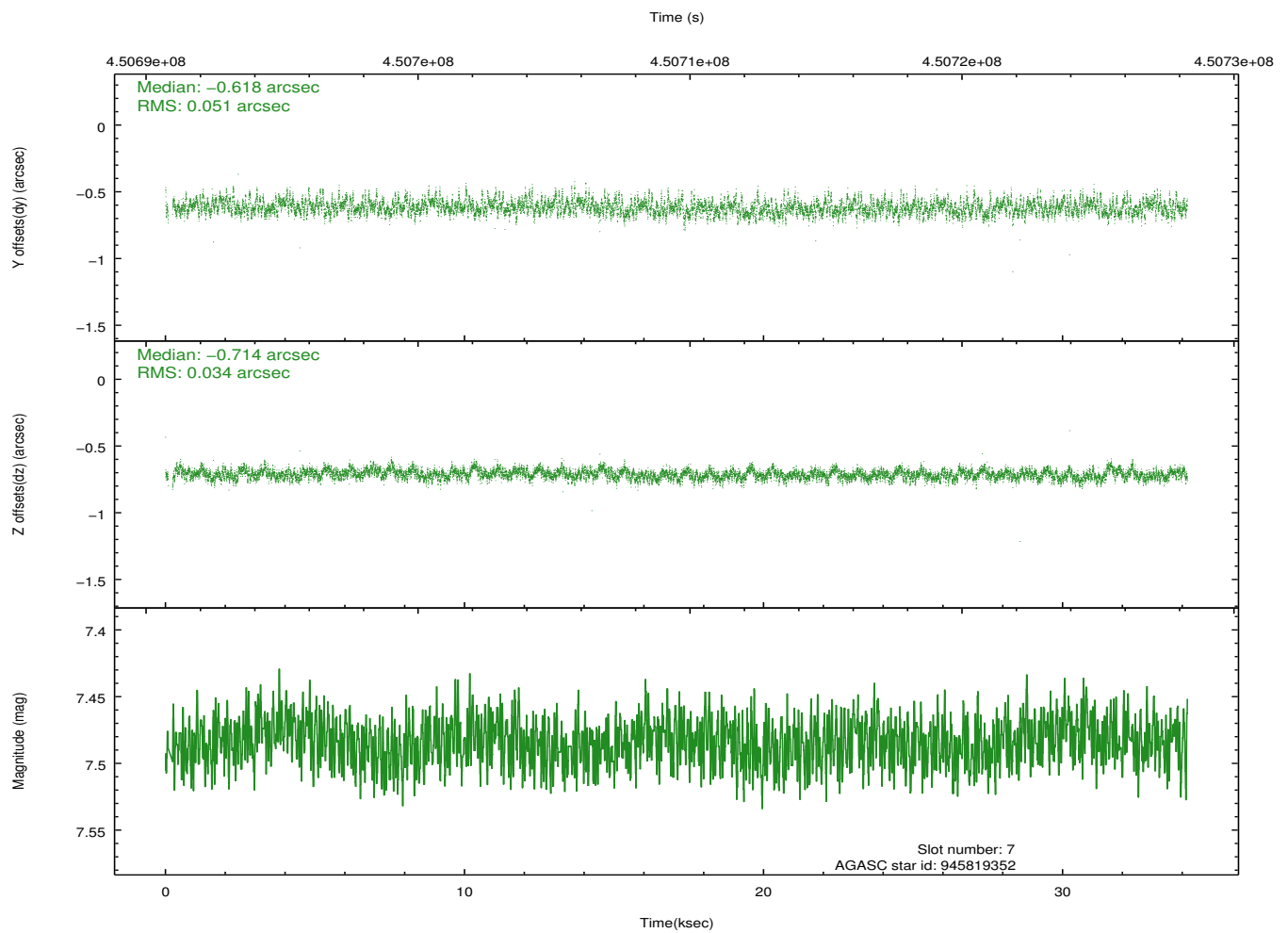
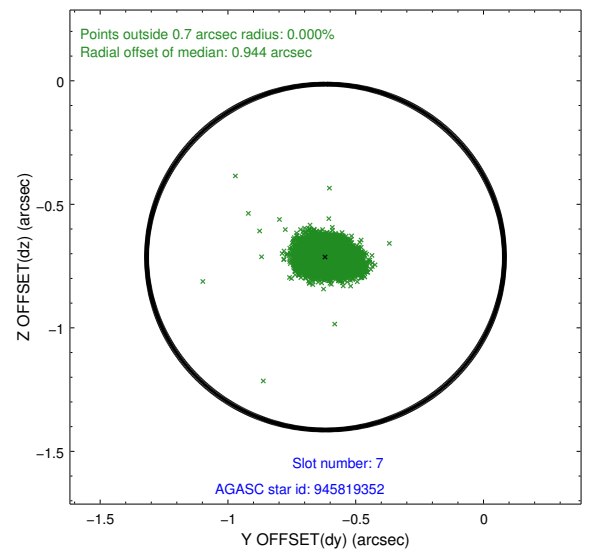
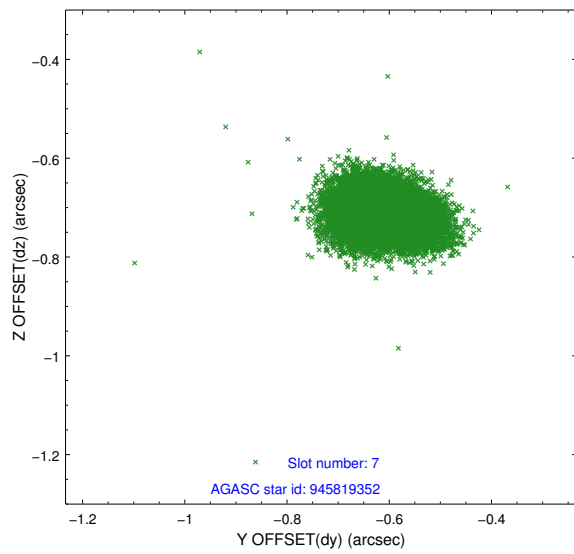
2.4.3 Slot 5



2.4.4 Slot 6

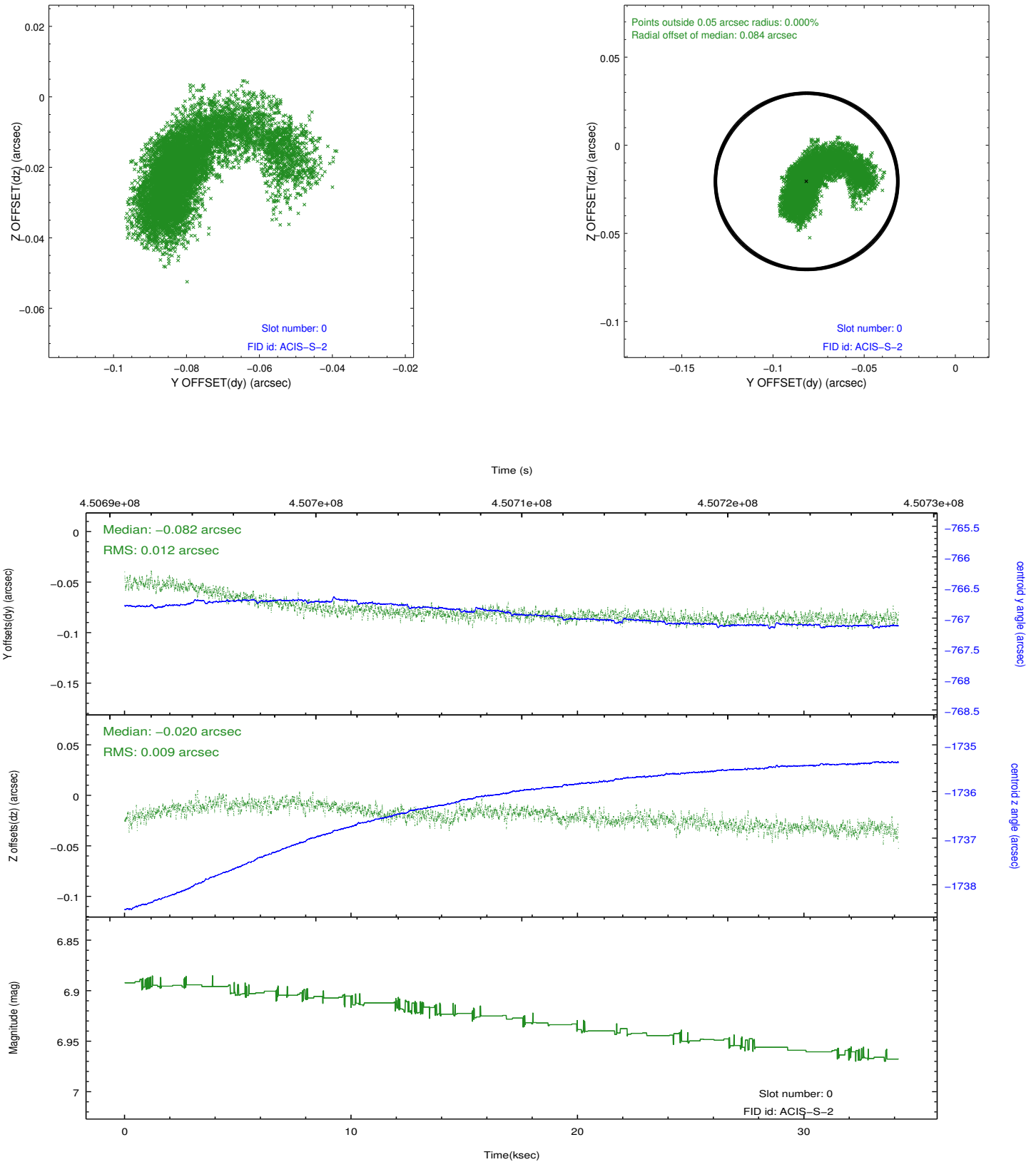


2.4.5 Slot 7

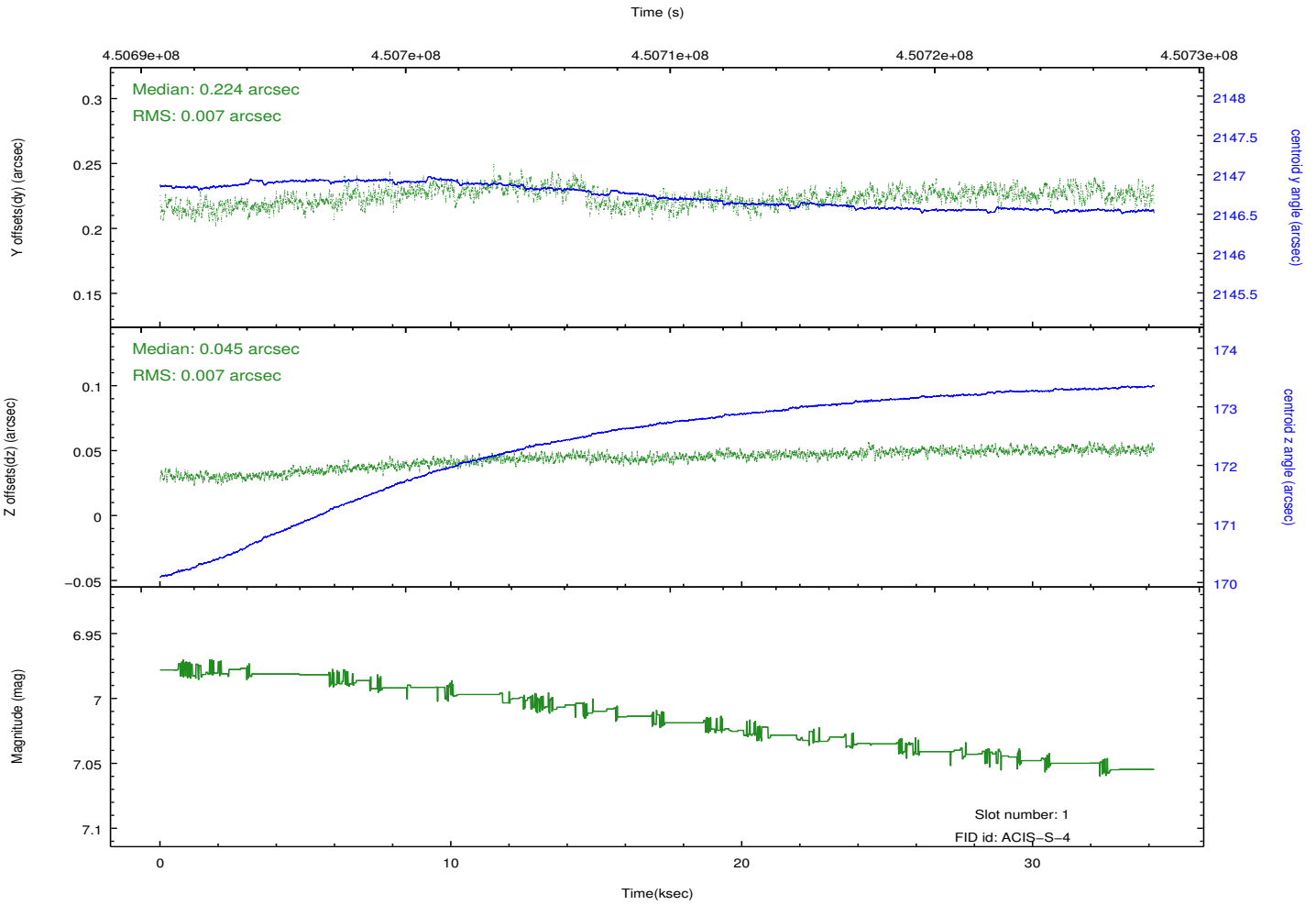
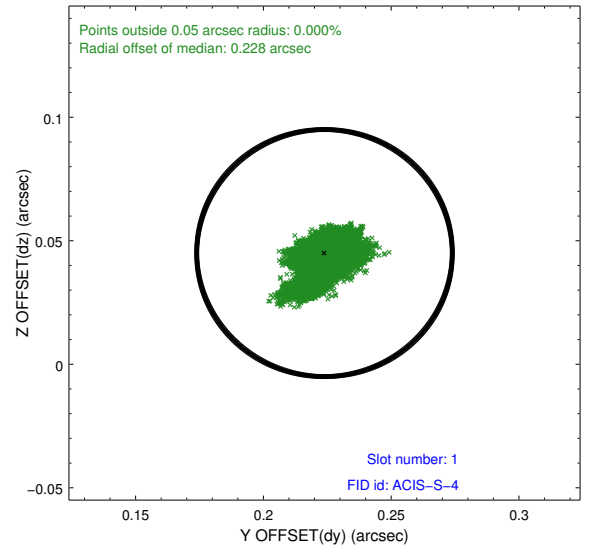
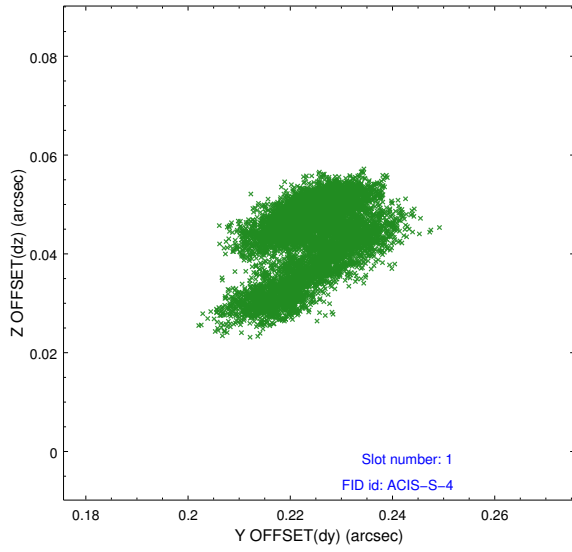


2.5 FID Slots

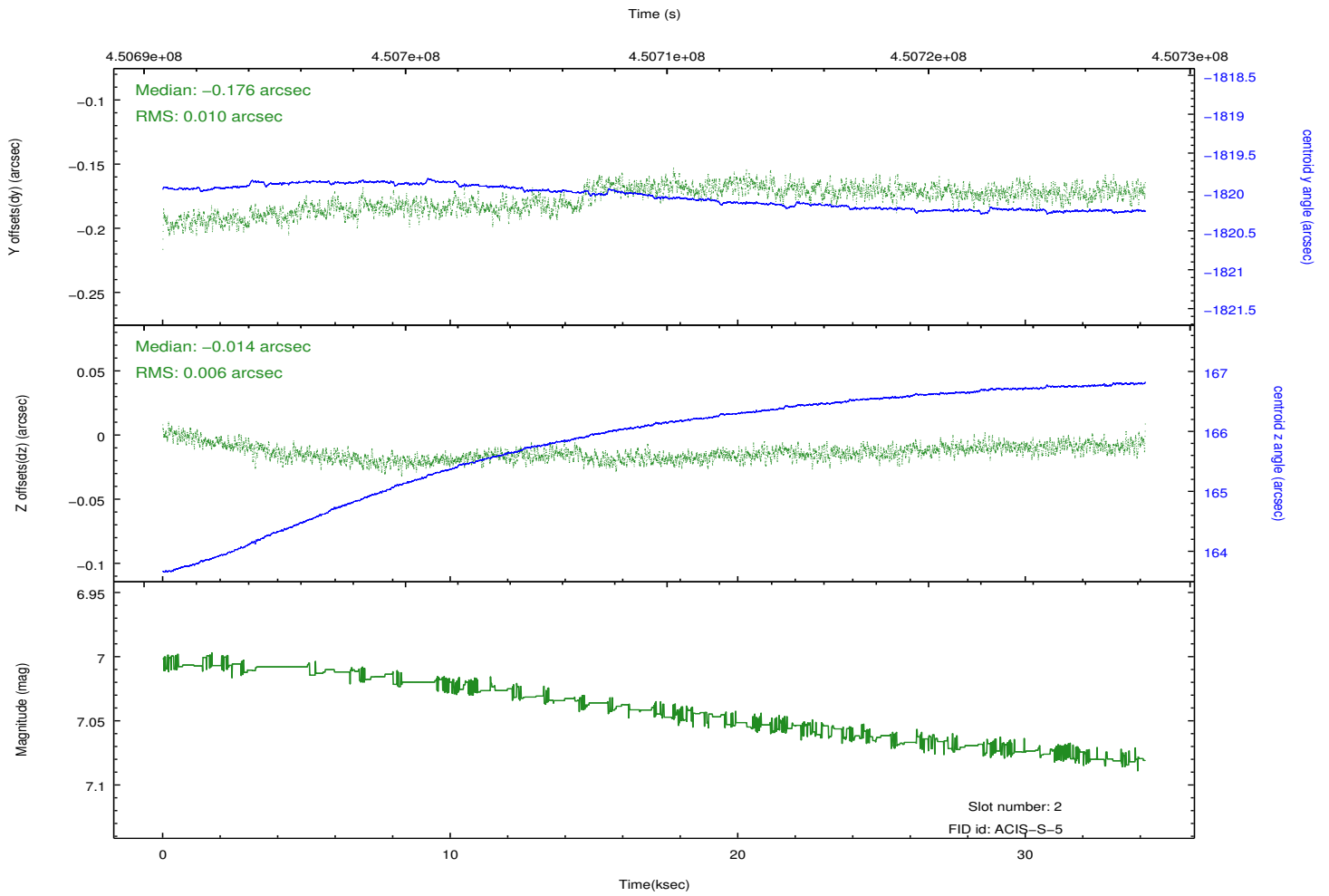
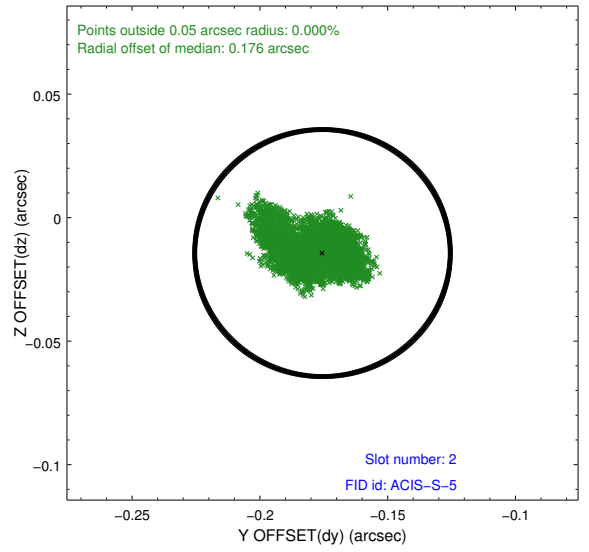
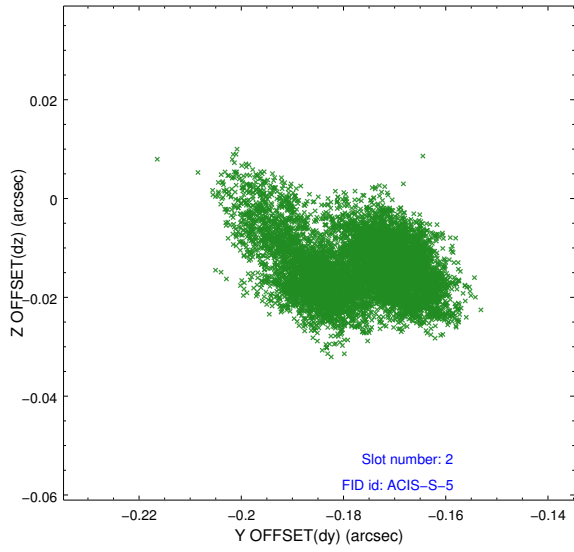
2.5.1 Slot 0



2.5.2 Slot 1



2.5.3 Slot 2



A Summary

A.1 Status

V&V Scientist	Beth Sundheim
V&V Date (YYYY-MM-DD)	2012.04.16
V&V Edition	1
V&V Disposition and Status	OK
V&V Charge Time	34.068676830351

A.2 Comments