

V&V Reference Report

L2 ASCDS Version : 8.5.1.1

Observation 14591 - L2 Version 2
Chandra X-Ray Center

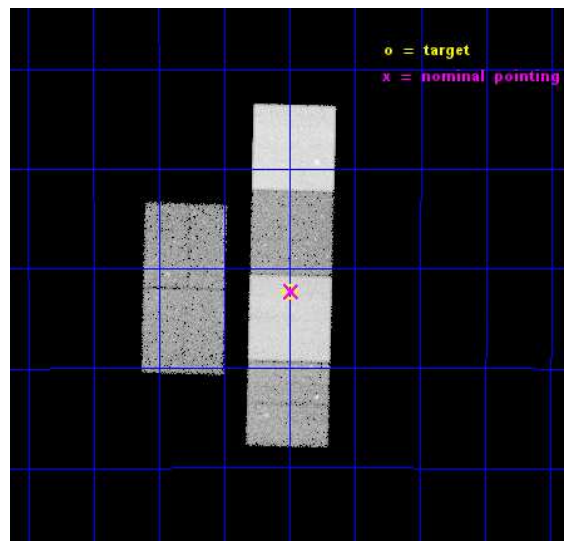
L2 Processing Date : Dec 1 2014

Contents

1	Front	2
2	OBI	3
2.1	OBI	3
2.1.1	Images	3
2.1.2	Bias	3
2.1.3	Parameters	4
2.1.4	Events	4
2.2	Compared Parameters	5
2.3	Aspect	6
2.4	Star Slots	9
2.4.1	Slot 3	9
2.4.2	Slot 4	10
2.4.3	Slot 5	11
2.4.4	Slot 6	12
2.4.5	Slot 7	13
2.5	FID Slots	14
2.5.1	Slot 0	14
2.5.2	Slot 1	15
2.5.3	Slot 2	16
A	Summary	17
A.1	Status	17
A.2	Comments	17

1 Front

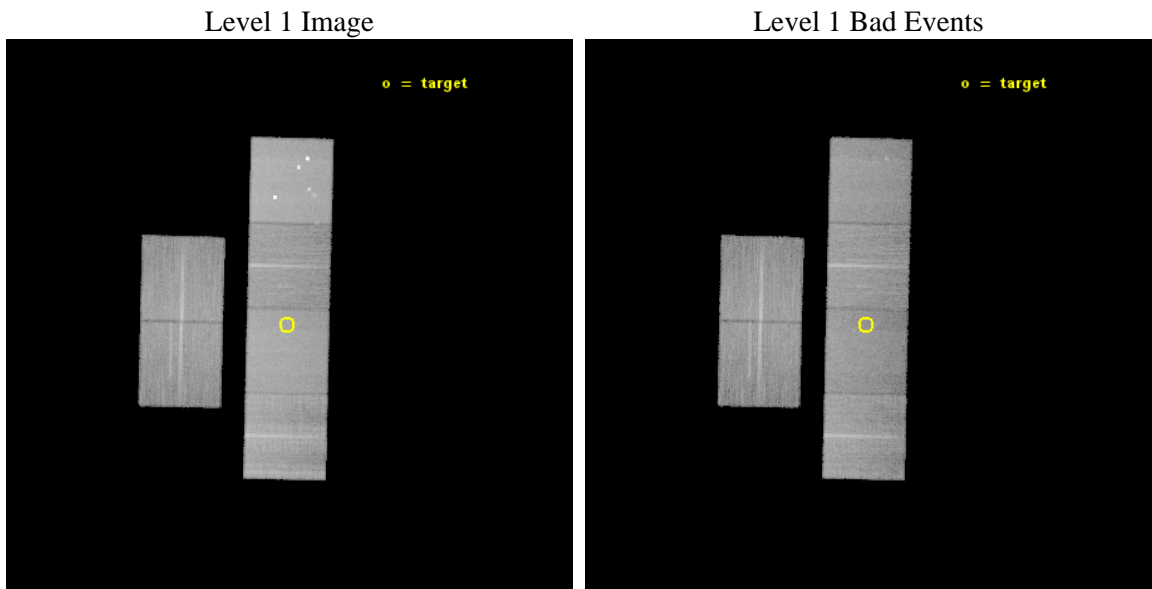
seq_num	200892	Sequence number
obs_id	14591	Observation id
title	COMPACT AND DIFFUSE X-RAY SOURCES IN THE YOUNGEST PLANETARY NEBULAE	
observer	Dr. Joel Kastner	Principal investigator
object	ESO 521-39	Source name
dtcycle	0	
cycle	P	events from which exps? Prim/Second/Both
ra_targ	272.374583	Observer's specified target RA [deg]
dec_targ	-24.206528	Observer's specified target Dec [deg]
ra_nom	272.37174164028	Nominal RA [deg]
dec_nom	-24.204974018143	Nominal Dec [deg]
roll_nom	91.36584679192	Nominal Roll [deg]
revision	2	Processing version of data
ontime	29964.164796293	Sum of GTIs [s]
livetime	29584.740499388	Livetime [s]
ontime2	29960.964865923	Sum of GTIs [s]
ontime3	29964.041676283	Sum of GTIs [s]
ontime5	29964.123756289	Sum of GTIs [s]
ontime6	29960.841745973	Sum of GTIs [s]
ontime7	29964.164796293	Sum of GTIs [s]
ontime8	29960.759665906	Sum of GTIs [s]
l2events	292589	Number of level 2 events



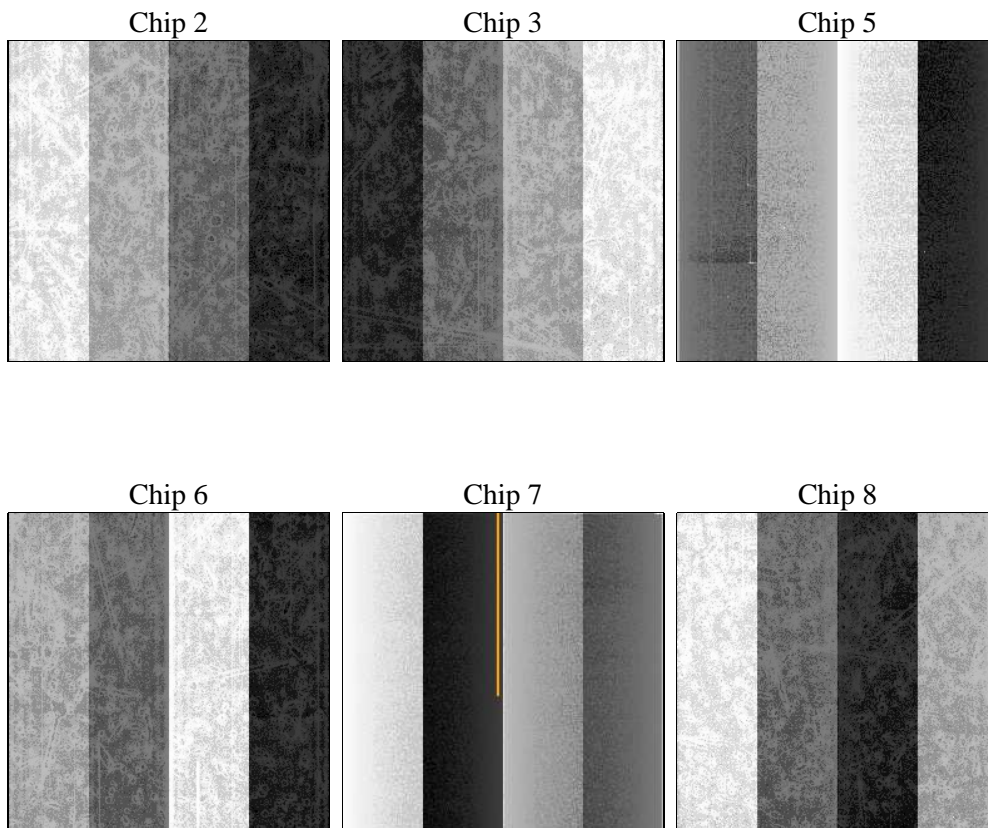
2 OBI

2.1 OBI

2.1.1 Images



2.1.2 Bias



2.1.3 Parameters

obi_num	0	Obi number	sched_exp_time	30000.385000	[s] Scheduled observation exposure time
ascdsver	10.3	Processing system revision	ontime	29964.164796293	Sum of GTIs [s]
caldbver	4.6.4	 	ontime2	29960.964865923	Sum of GTIs [s]
date	2014-12-01T19:16:17	Date and time of file creation	ontime3	29964.041676283	Sum of GTIs [s]
revision	2	Processing version of data	ontime5	29964.123756289	Sum of GTIs [s]
			ontime6	29960.841745973	Sum of GTIs [s]
			ontime7	29964.164796293	Sum of GTIs [s]
			ontime8	29960.759665906	Sum of GTIs [s]
			l1events	1209412	Number of level 1 events

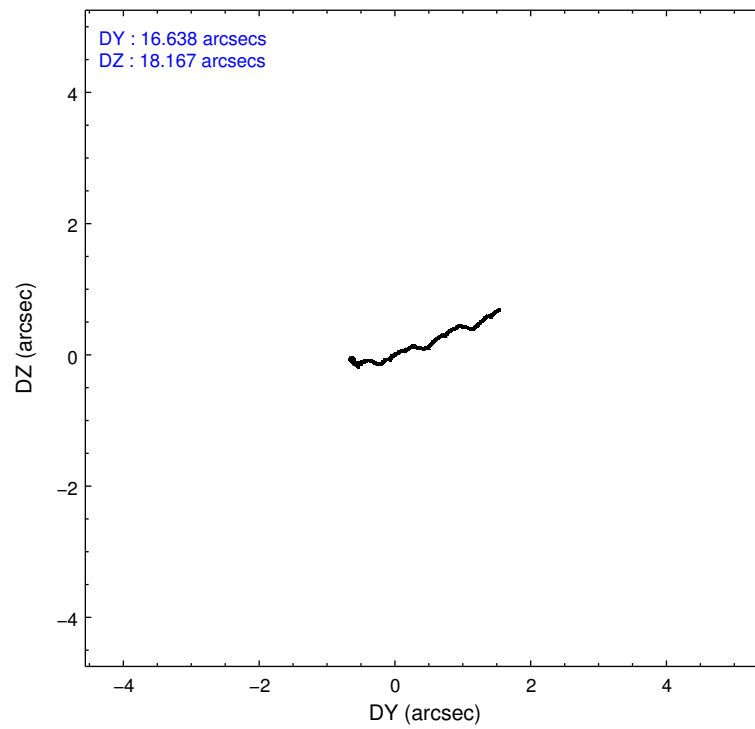
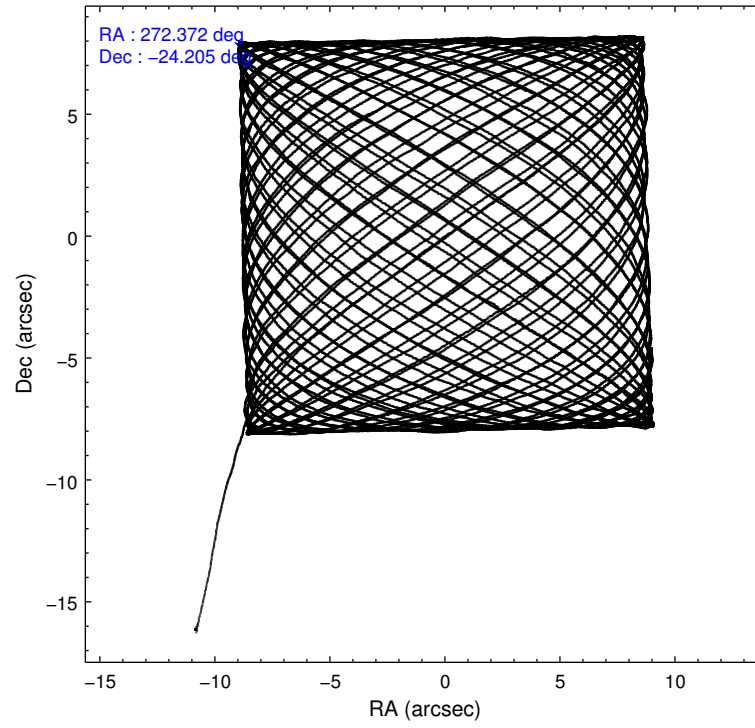
2.1.4 Events

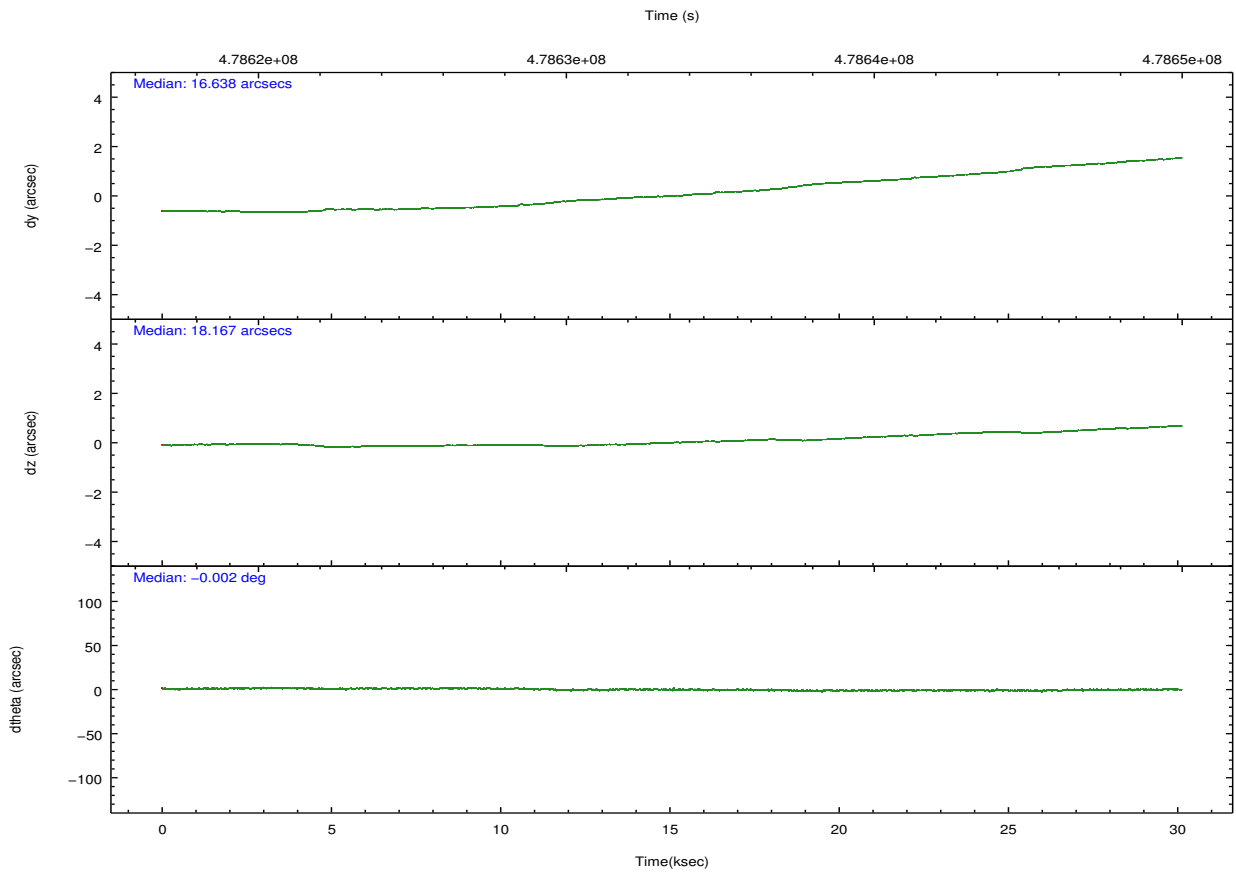
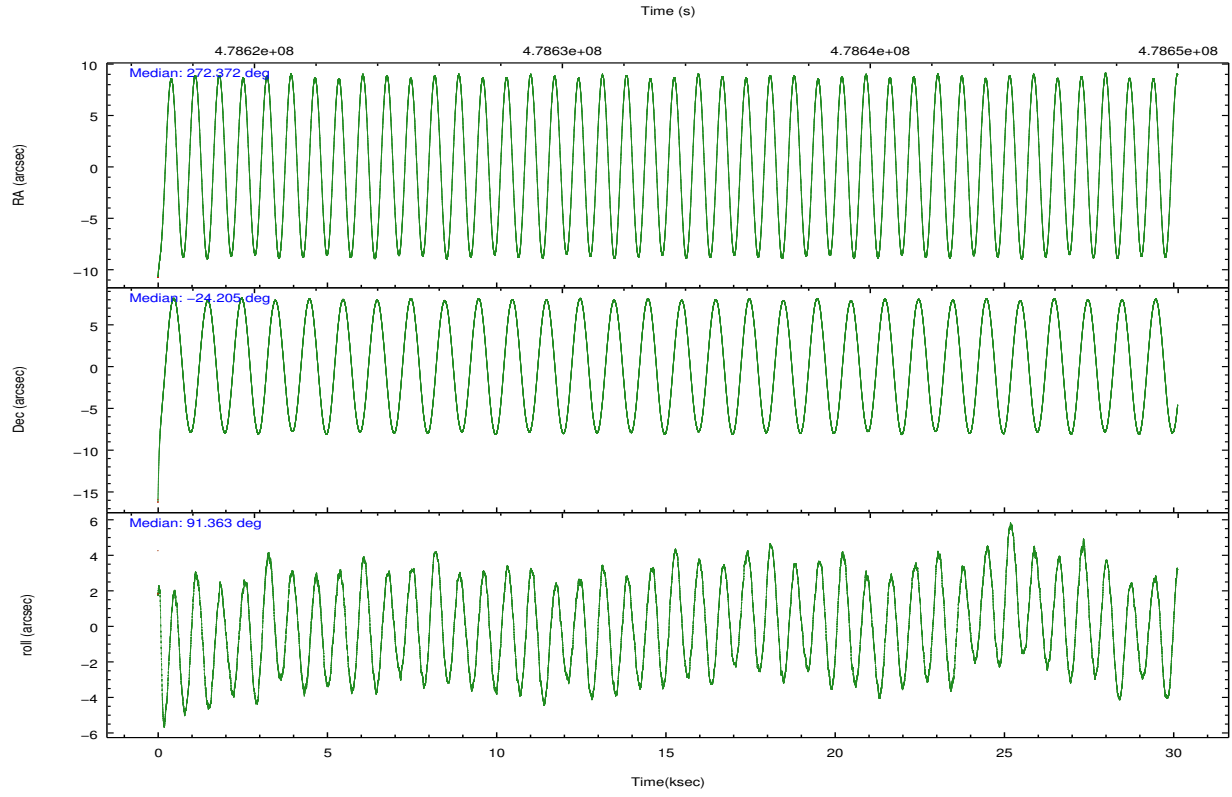
	ccd 2	ccd 3	ccd 5	ccd 6	ccd 7	ccd 8		ccd 2	ccd 3	ccd 5	ccd 6	ccd 7	ccd 8
level 1 events	166706	154904	281979	167219	219374	219230	grade 0 events	7160	6811	23462	7741	9140	18585
rejected events	147126	136521	137170	146237	120905	159011		4%	4%	8%	4%	4%	8%
rejected %	88%	88%	48%	87%	55%	72%	grade 1 events	76	89	744	94	246	176
								0%	0%	0%	0%	0%	0%
							grade 2 events	4779	3962	42358	4591	20397	14115
								2%	2%	15%	2%	9%	6%
							grade 3 events	1940	1913	4775	2089	8672	5996
								1%	1%	1%	1%	3%	2%
							grade 4 events	1978	1931	4678	2040	8522	5711
								1%	1%	1%	1%	3%	2%
							grade 5 events	7226	8323	20041	8475	23105	12147
								4%	5%	7%	5%	10%	5%
							grade 6 events	3727	3770	69571	4526	51754	15817
								2%	2%	24%	2%	23%	7%
							grade 7 events	139820	128105	116350	137663	97538	146683
								83%	82%	41%	82%	44%	66%

2.2 Compared Parameters

Parameter	Planned	Actual	Parameter	Planned	Actual
Instrument	ACIS	ACIS	Obspar format version number	7	7
Detector	ACIS-235678	ACIS-235678	Obspar file type	PREDICTED	ACTUAL
Grating	NONE	NONE	Obspar update status	NONE	UPDATED
Data mode	VFAINT	VFAINT	CCD I0 on	N	N
Observation mode	POINTING	POINTING	CCD I1 on	N	N
[deg] Pointing RA	272.387698	272.37174164028	CCD I2 on	O3	Y
[deg] Pointing Dec	-24.228113	-24.20497401814341	CCD I3 on	O2	Y
[deg] Pointing Roll	91.215768	91.36584679191967	CCD S0 on	N	N
[mm] SIM focus pos	-0.684267	-0.6828225247311905	CCD S1 on	O1	Y
[mm] SIM defocus	0	0.001444936568705701	CCD S2 on	Y	Y
[mm] SIM translation stage pos	-190.132523	-190.1425803651734	CCD S3 on	Y	Y
[mm] SIM translation stage offset	0	0.01005778216563158	CCD S4 on	Y	Y
[s] Observation start time (MET)	478618485.184000	478616972.71118	CCD S5 on	N	N
Observation start date	2013-03-02T13:33:38	2013-03-02T13:09:32	Number of optional ACIS chips dropped	0	0
[s] Observation end time (MET)	478648486.184000	478648711.8379	On-chip summing requested	N	N
Observation end date	2013-03-02T21:53:39	2013-03-02T21:58:31	Subarray requested	NONE	NONE
Read mode	TIMED	TIMED	Alternating exposures requested	N	N
			[s] Primary exposure time	0.000000	3.2

2.3 Aspect





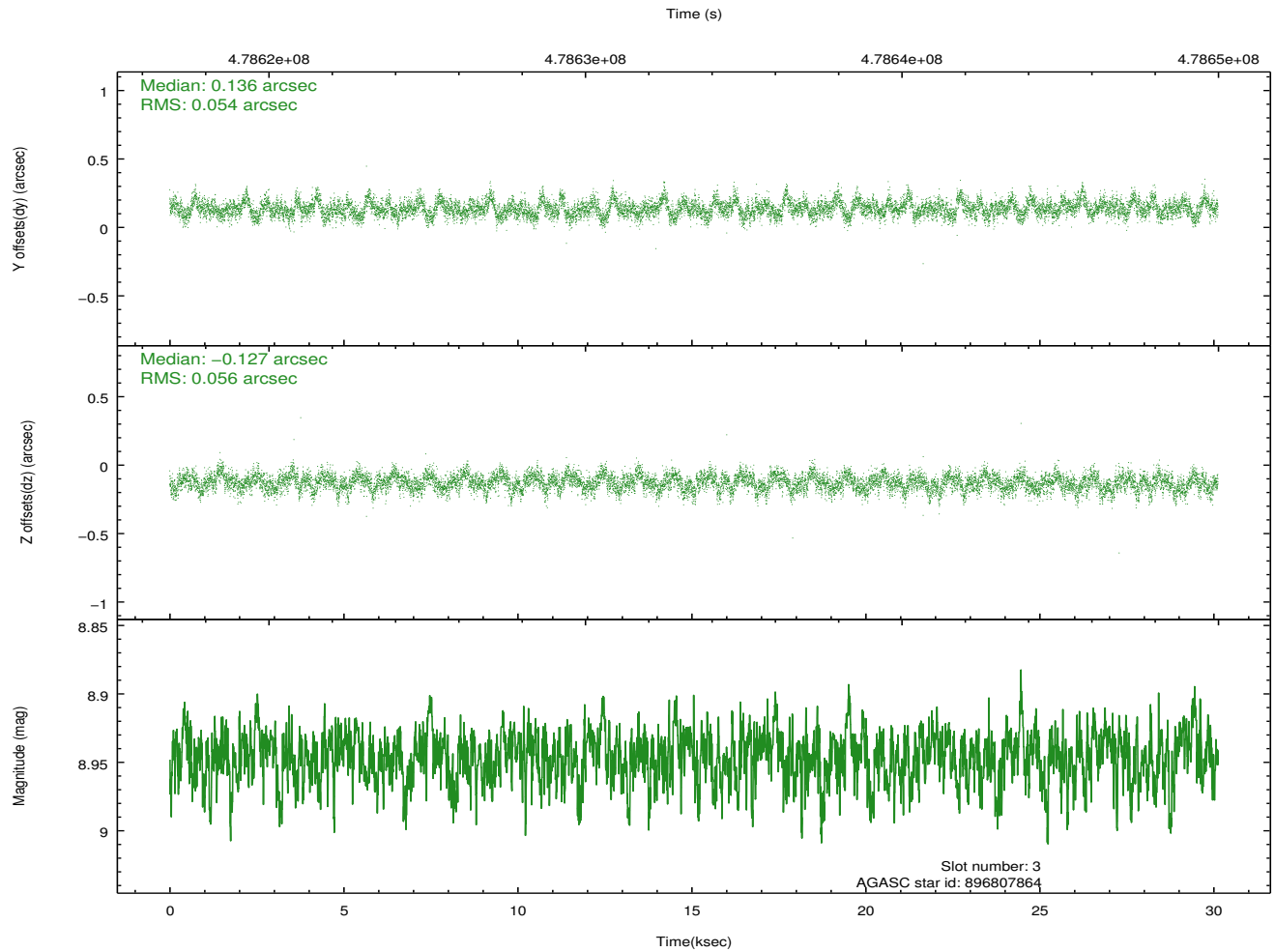
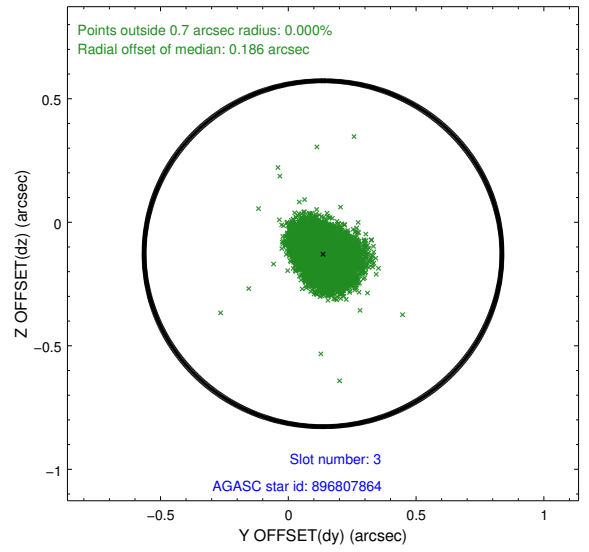
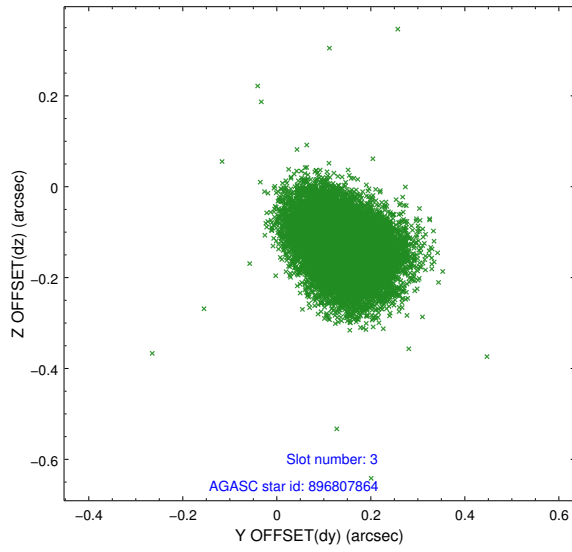
Slot Statistics

slot	status	used	id	mag	n_pts	med_dy	med_dz	dr1	dr2	ra	dec	mean_y	mean_z
0	FID		ACIS-S-2	6.92	7348	-0.095	-0.050	0.009	0.020	0.000000	0.000000	-769.97	-1739.72
1	FID		ACIS-S-4	7.01	7348	0.132	0.045	0.009	0.017	0.000000	0.000000	2143.56	168.70
2	FID		ACIS-S-6	7.14	7348	-0.064	0.011	0.009	0.015	0.000000	0.000000	392.21	806.19
3	GUIDE	used	896807864	8.95	14685	0.136	-0.127	0.083	0.136	271.984074	-24.362407	-457.01	1333.54
4	GUIDE	used	896944880	7.73	14691	0.266	-0.061	0.056	0.086	272.225160	-24.357987	-456.13	542.90
5	GUIDE	used	896933344	7.98	14694	-0.057	0.010	0.063	0.104	272.401128	-23.567972	2375.05	-94.55
6	GUIDE	used	896938152	8.50	14691	-0.507	0.312	0.081	0.132	272.626418	-23.566738	2362.84	-837.66
7	GUIDE	used	897320208	8.82	14688	0.160	-0.131	0.082	0.131	272.063998	-24.413993	-647.37	1074.92

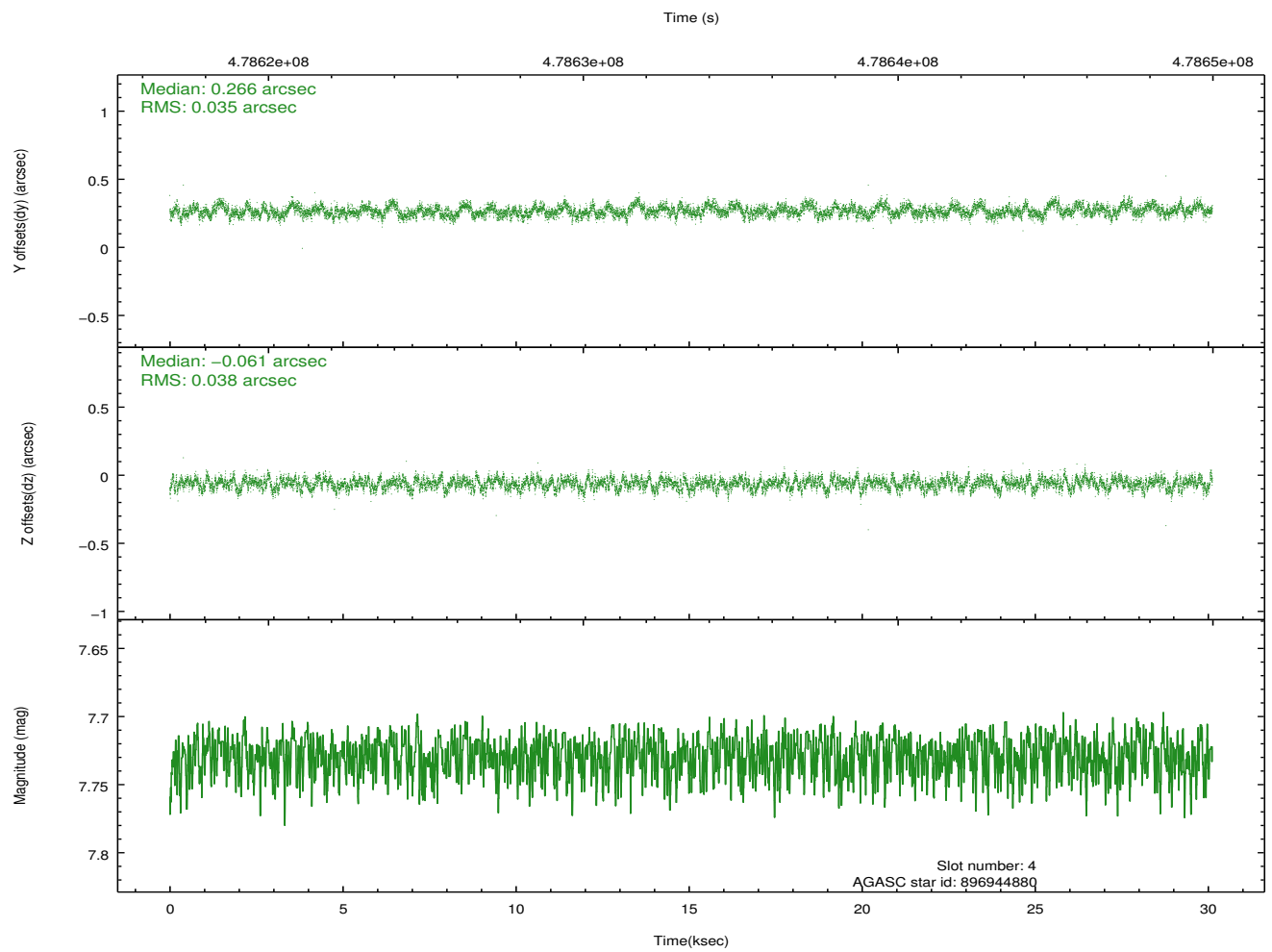
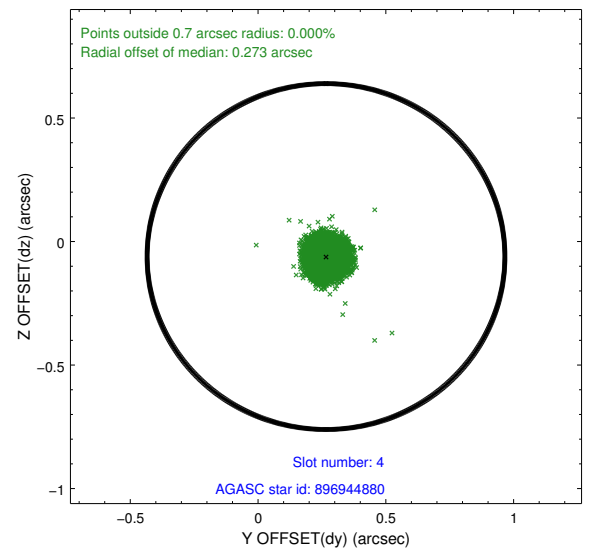
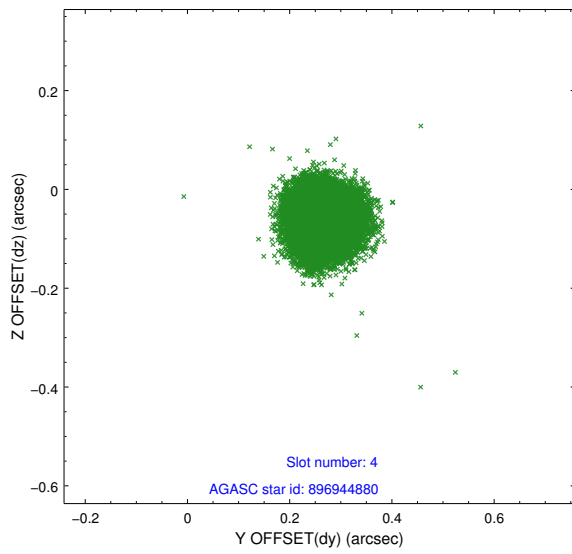
∞

2.4 Star Slots

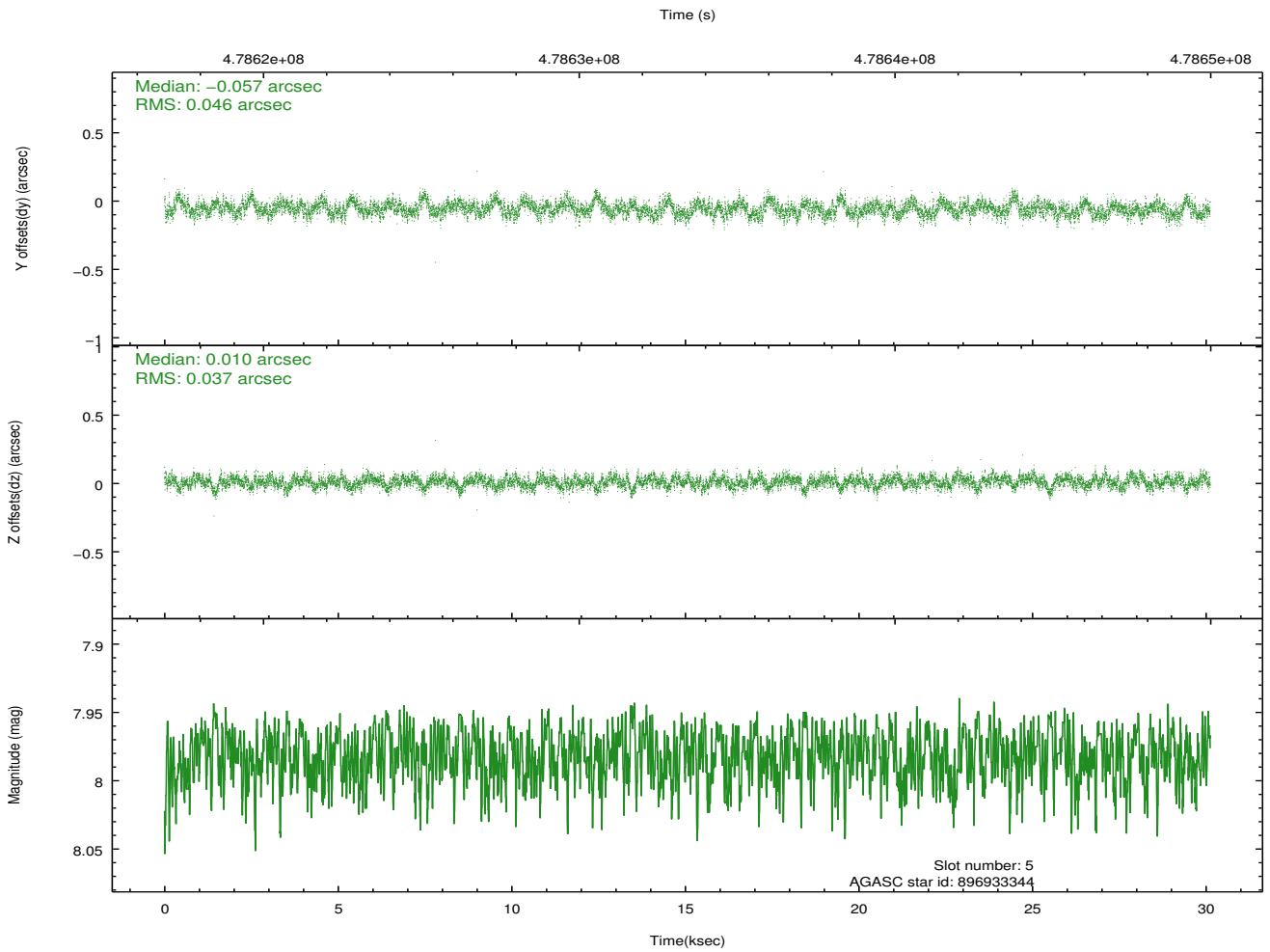
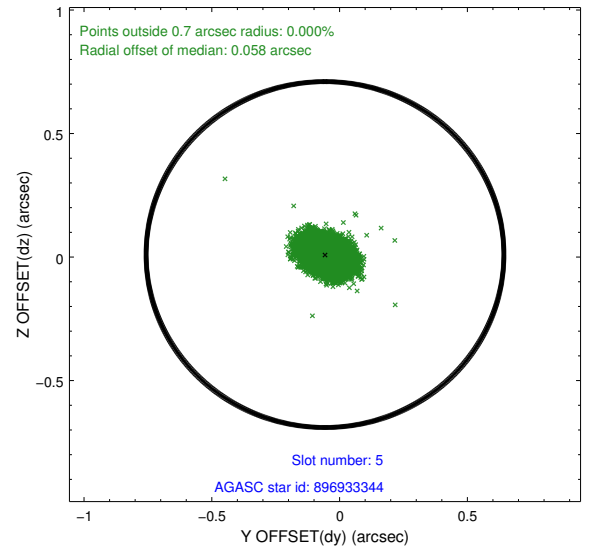
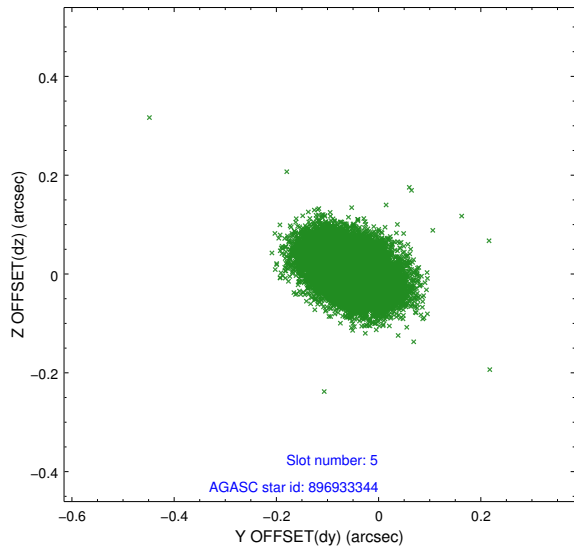
2.4.1 Slot 3



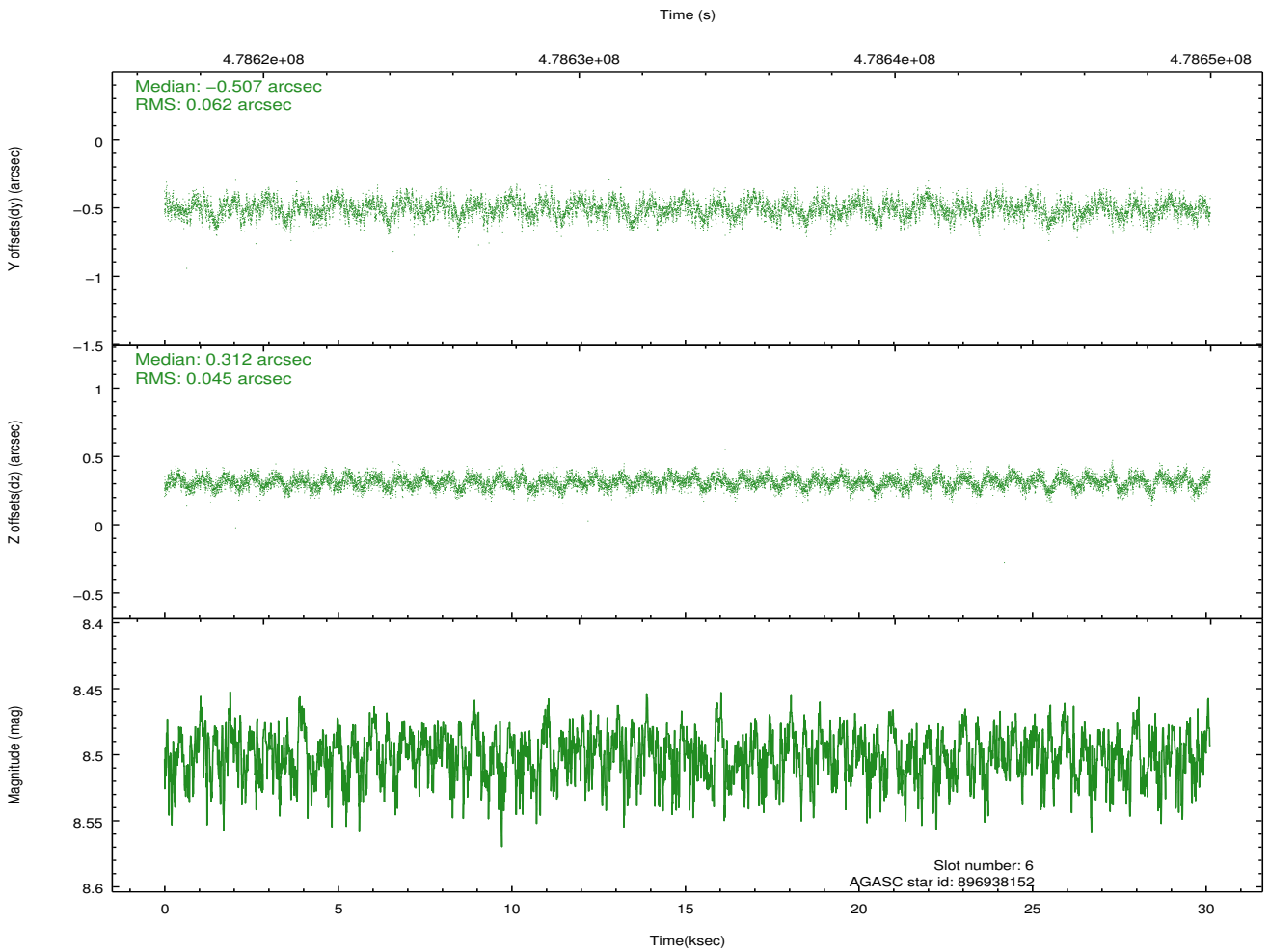
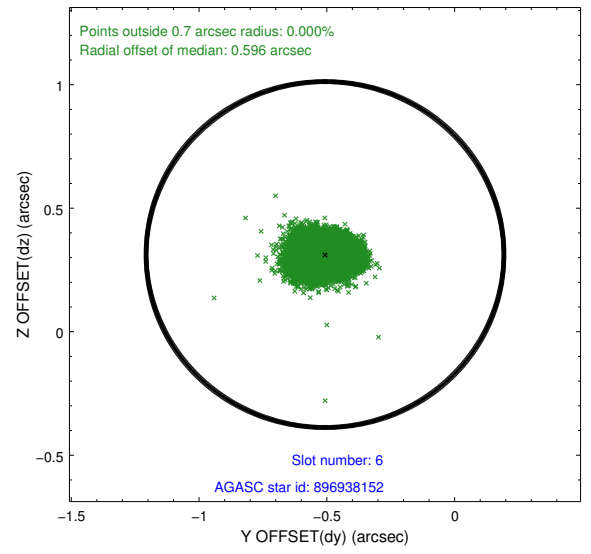
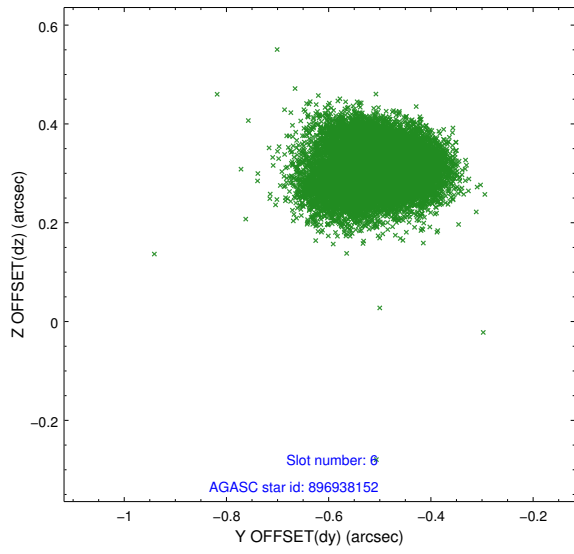
2.4.2 Slot 4



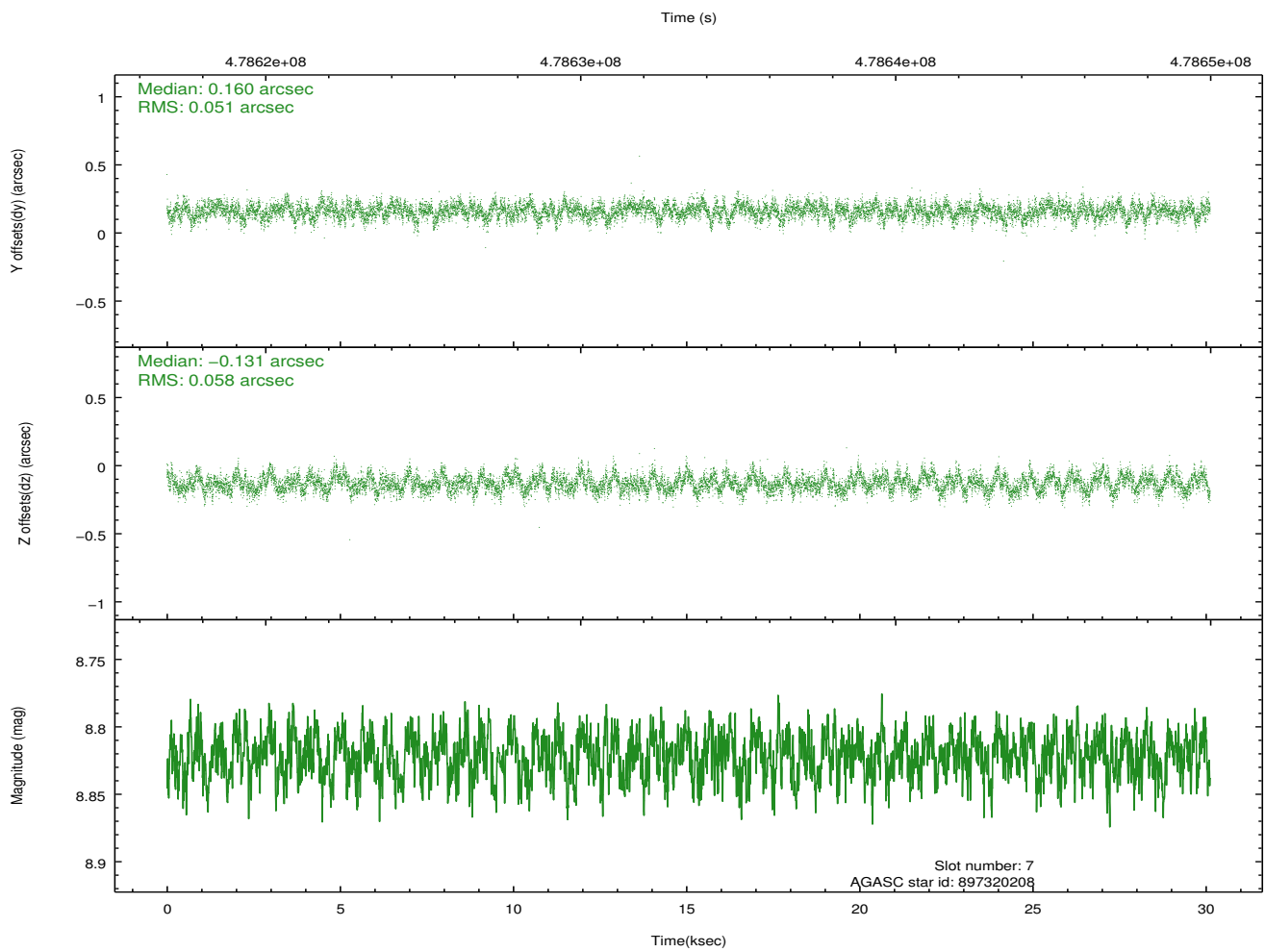
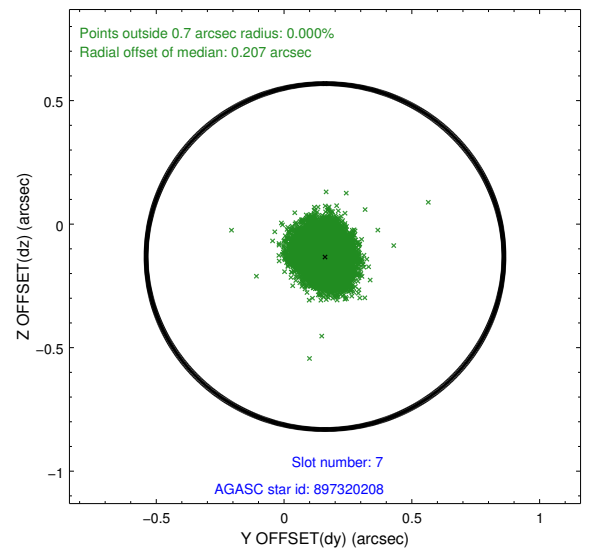
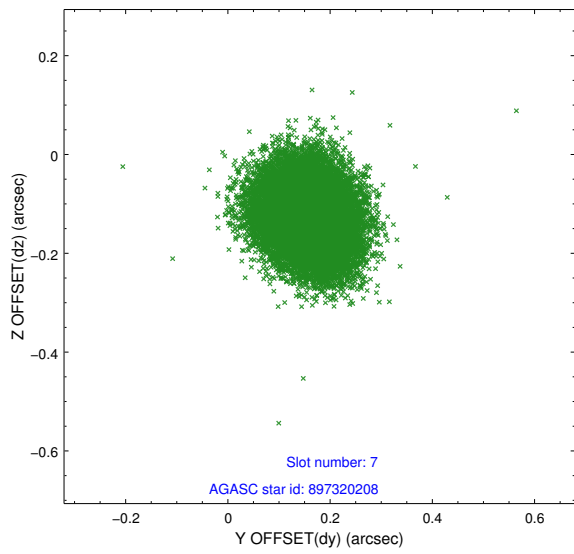
2.4.3 Slot 5



2.4.4 Slot 6

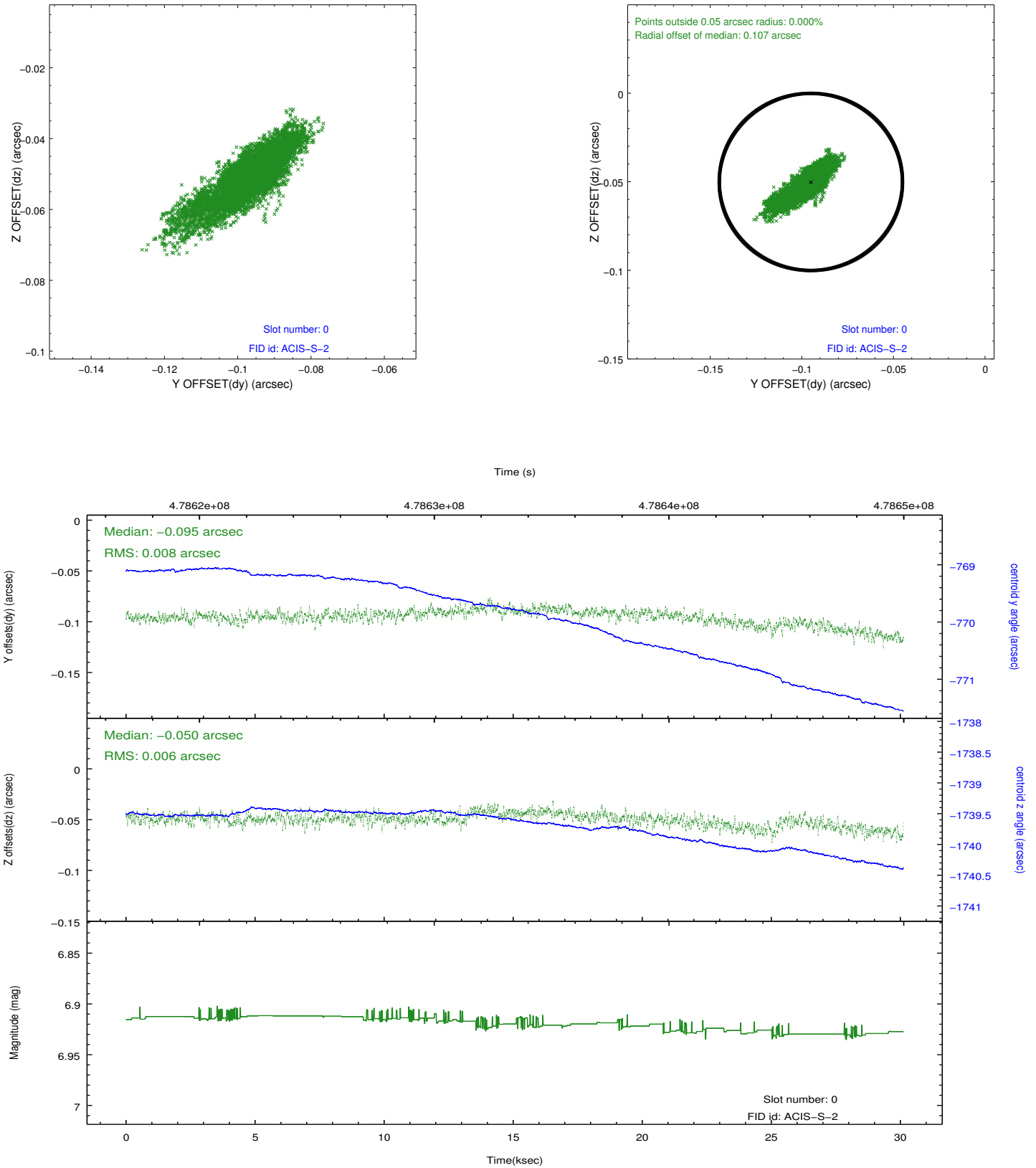


2.4.5 Slot 7

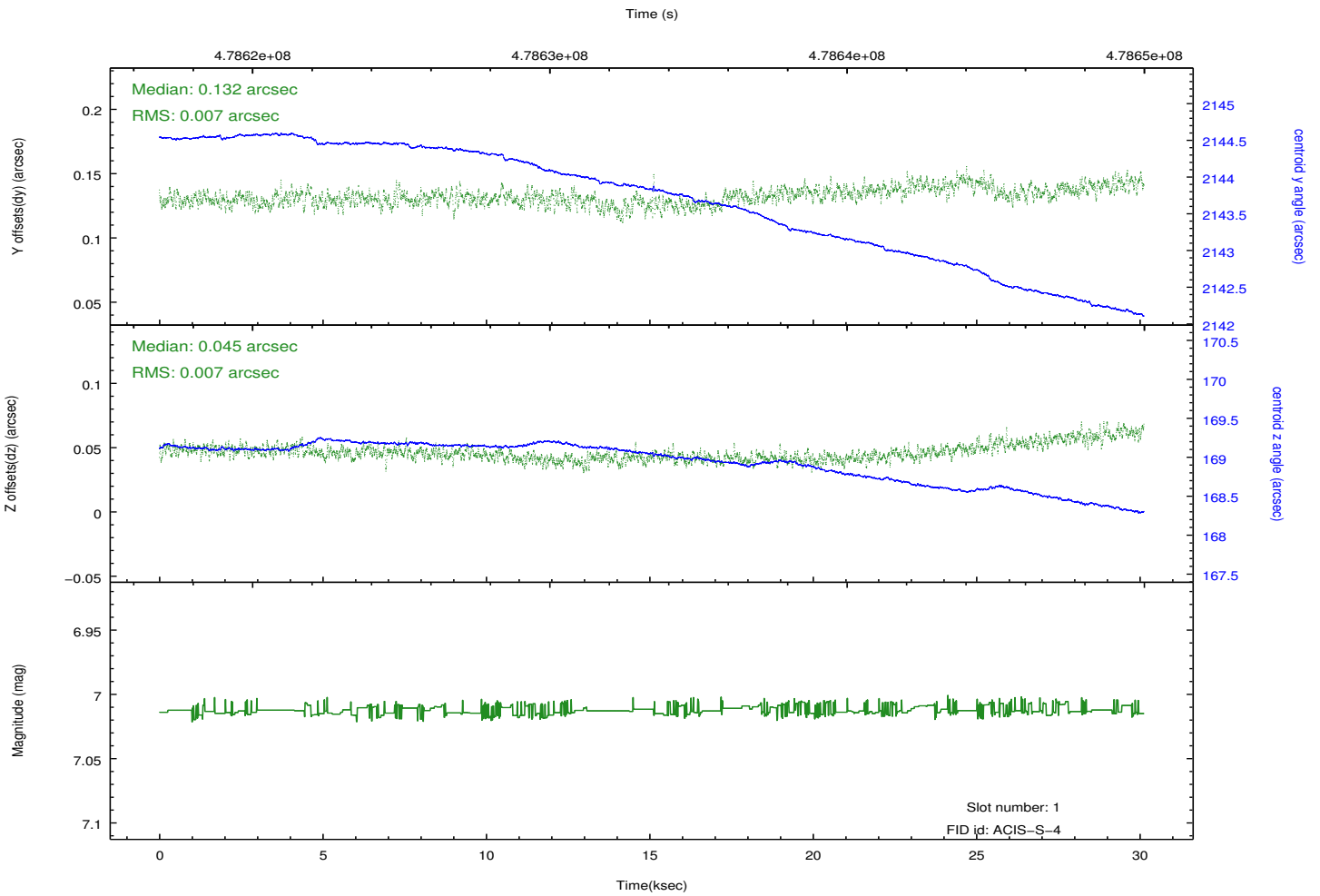
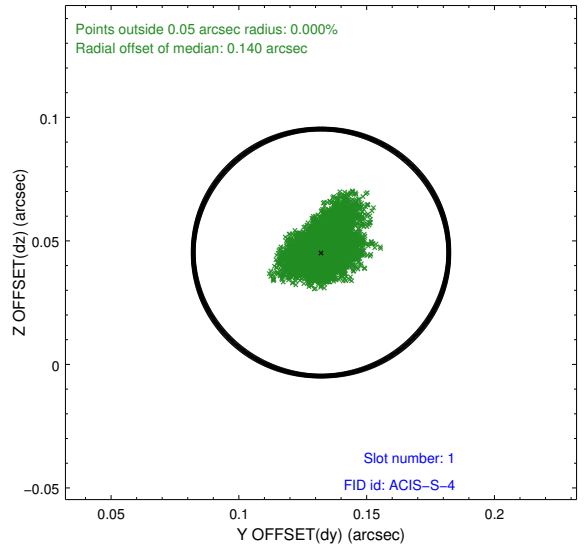
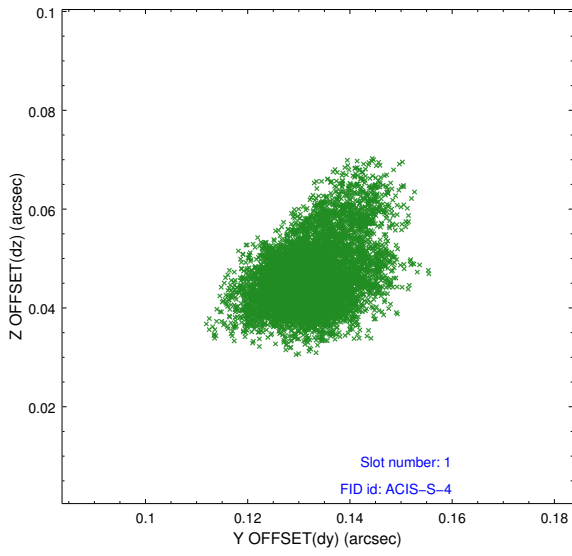


2.5 FID Slots

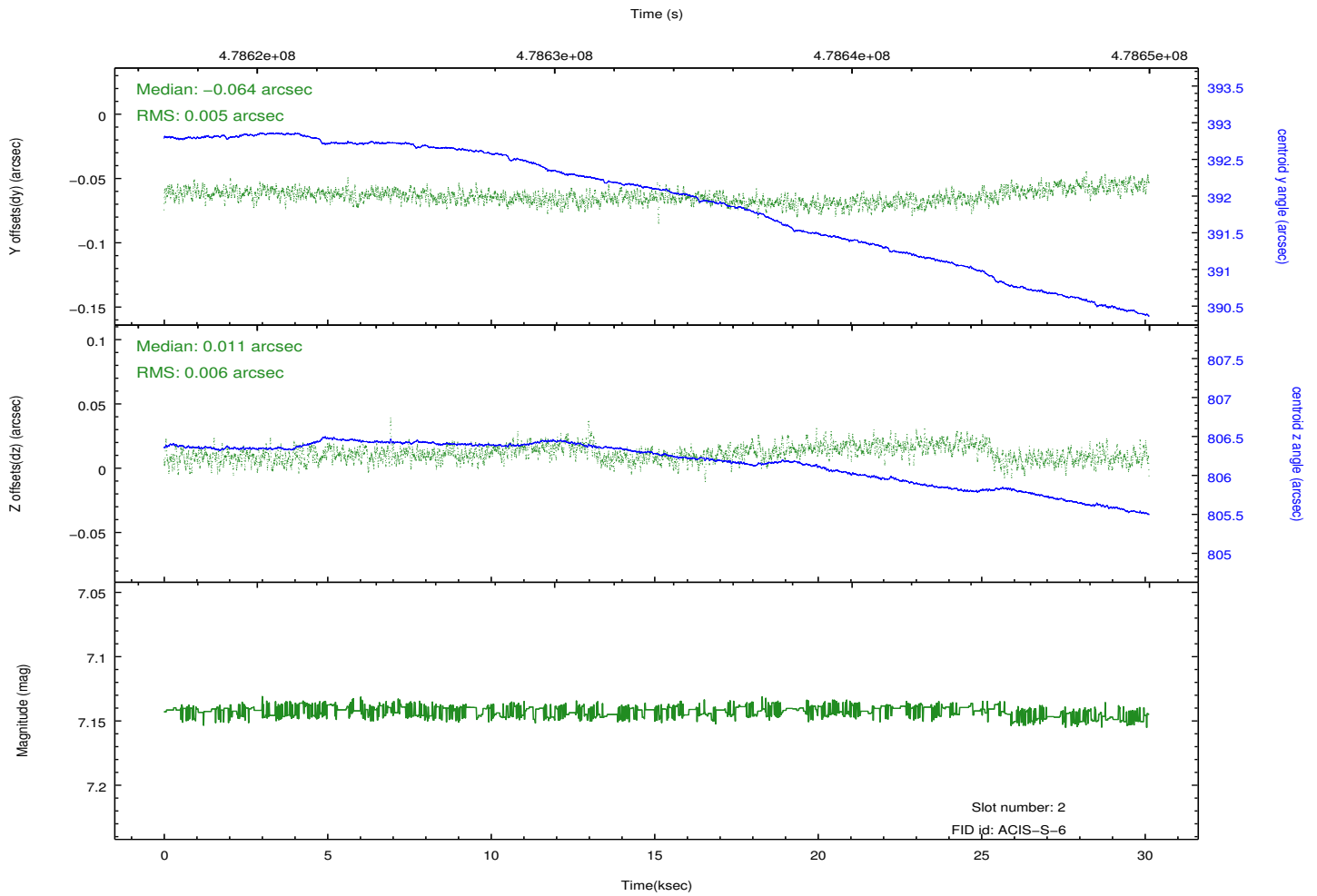
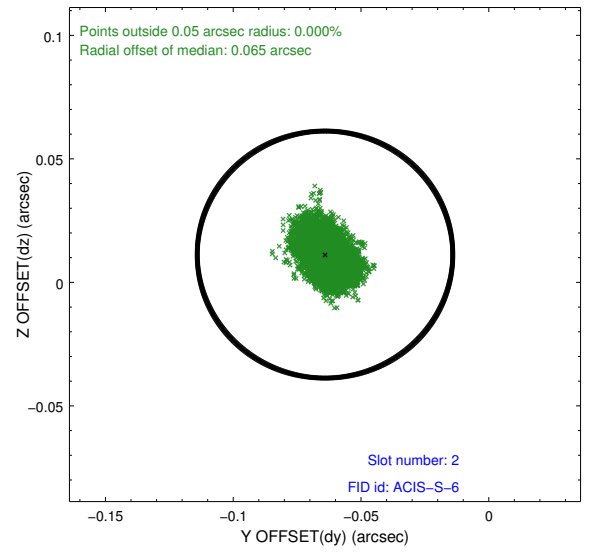
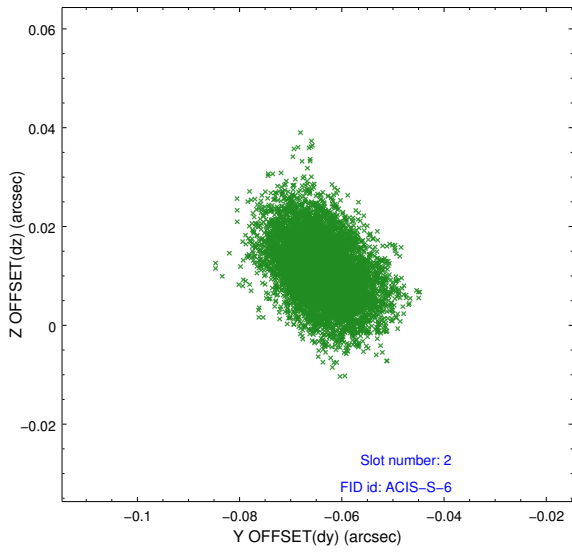
2.5.1 Slot 0



2.5.2 Slot 1



2.5.3 Slot 2



A Summary

A.1 Status

V&V Scientist	Jen Lauer
V&V Date (YYYY-MM-DD)	2014.12.09
V&V Edition	1
V&V Disposition and Status	OK
V&V Charge Time	29.964164796293

A.2 Comments

These data have been reprocessed with new aspect alignment calibration files that correct small mean offsets (up to 0.4 arcsecs) and improve overall astrometric accuracy. The new calibration was determined using data from the time period being reprocessed and was performed using cross-correlation of X-ray sources with radio and optical counterparts.