

V&V Reference Report

L2 ASCDS Version : 8.5.1.1

Observation 14701 - L2 Version 3
Chandra X-Ray Center

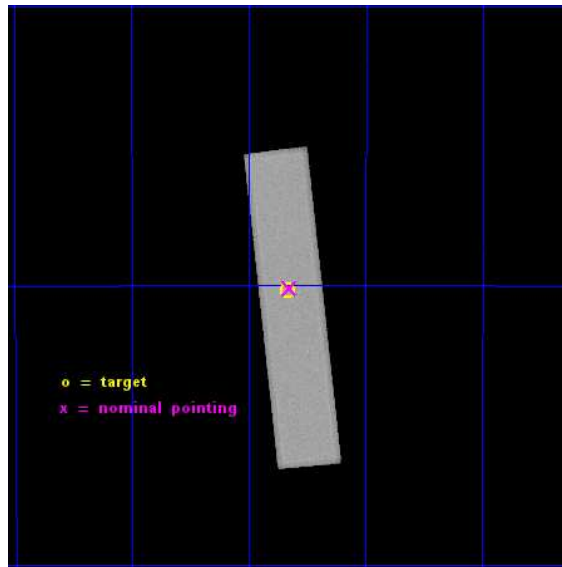
L2 Processing Date : Dec 3 2014

Contents

1	Front	2
2	OBI	3
2.1	OBI	3
2.1.1	Images	3
2.1.2	Parameters	4
2.1.3	Events	4
2.2	Compared Parameters	5
2.3	Aspect	6
2.4	Star Slots	9
2.4.1	Slot 3	9
2.4.2	Slot 4	10
2.4.3	Slot 5	11
2.4.4	Slot 6	12
2.4.5	Slot 7	13
2.5	FID Slots	14
2.5.1	Slot 0	14
2.5.2	Slot 1	15
2.5.3	Slot 2	16
A	Summary	17
A.1	Status	17
A.2	Comments	17

1 Front

seq_num	501829	Sequence number
obs_id	14701	Observation id
title	PROMPT STUDY OF MAGNETAR OUTBURSTS WITH CHANDRA	Proposal title
observer	Dr. Nanda Rea	Principal investigator
object	NEWMAGNETAR	Source name
ra_targ	266.417458	Observer's specified target RA [deg]
dec_targ	-29.007889	Observer's specified target Dec [deg]
ra_nom	266.41295294098	Nominal RA [deg]
dec_nom	-29.005252505768	Nominal Dec [deg]
roll_nom	83.472647490407	Nominal Roll [deg]
revision	3	Processing version of data
ontime	9751.0817787647	[s]
livetime	9712.6554077642	Ontime multiplied by DTCOR
l2events	388149	Number of level 2 events

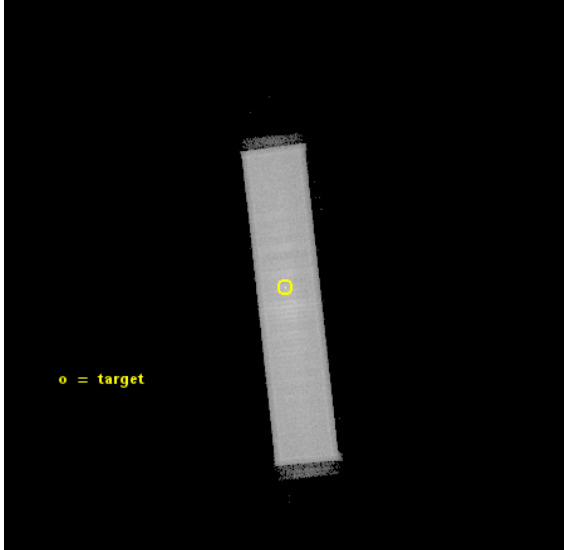


2 OBI

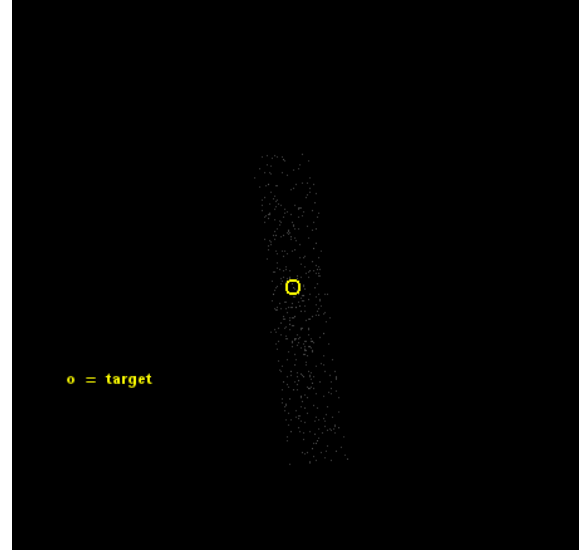
2.1 OBI

2.1.1 Images

Level 1 Image



Level 1 Bad Events



2.1.2 Parameters

obi_num	0	Obi number	sched_exp_time	10000.000000	[s] Scheduled observation exposure time
ascdsver	10.3	Processing system revision	ontime	9751.0817787647	[s]
caldsver	4.6.4	 	l1events	564550	Number of level 1 events
date	2014-12-03T06:16:44	Date and time of file creation			
revision	3	Processing version of data			

2.1.3 Events

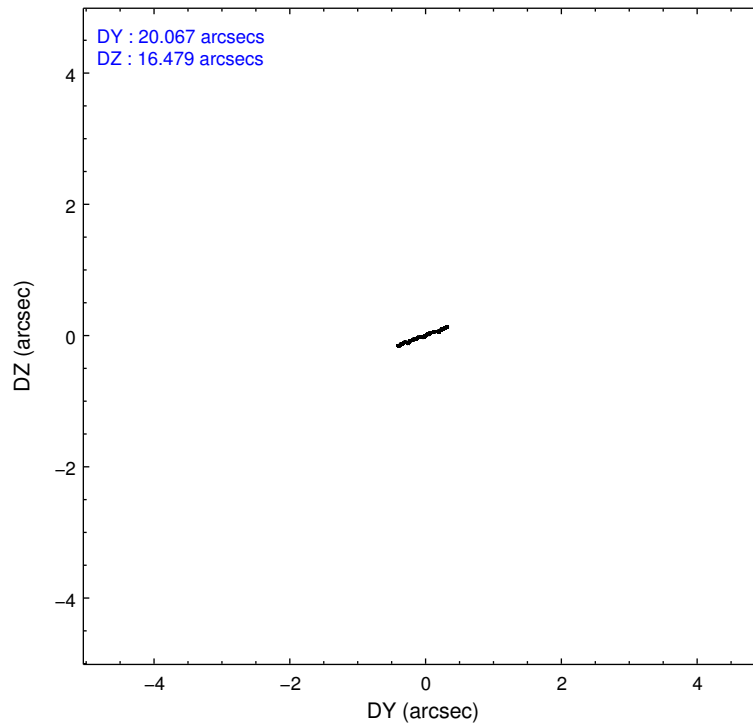
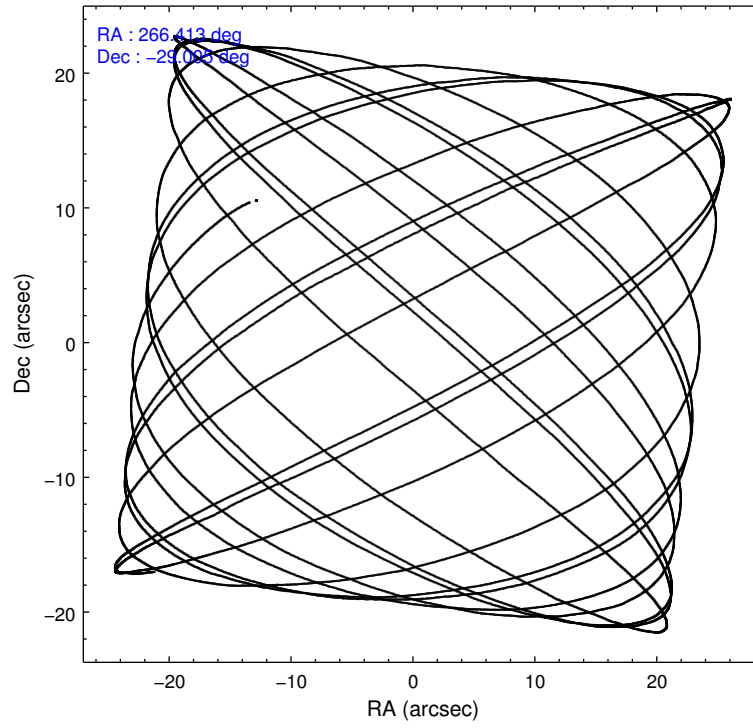
Level 1 Events

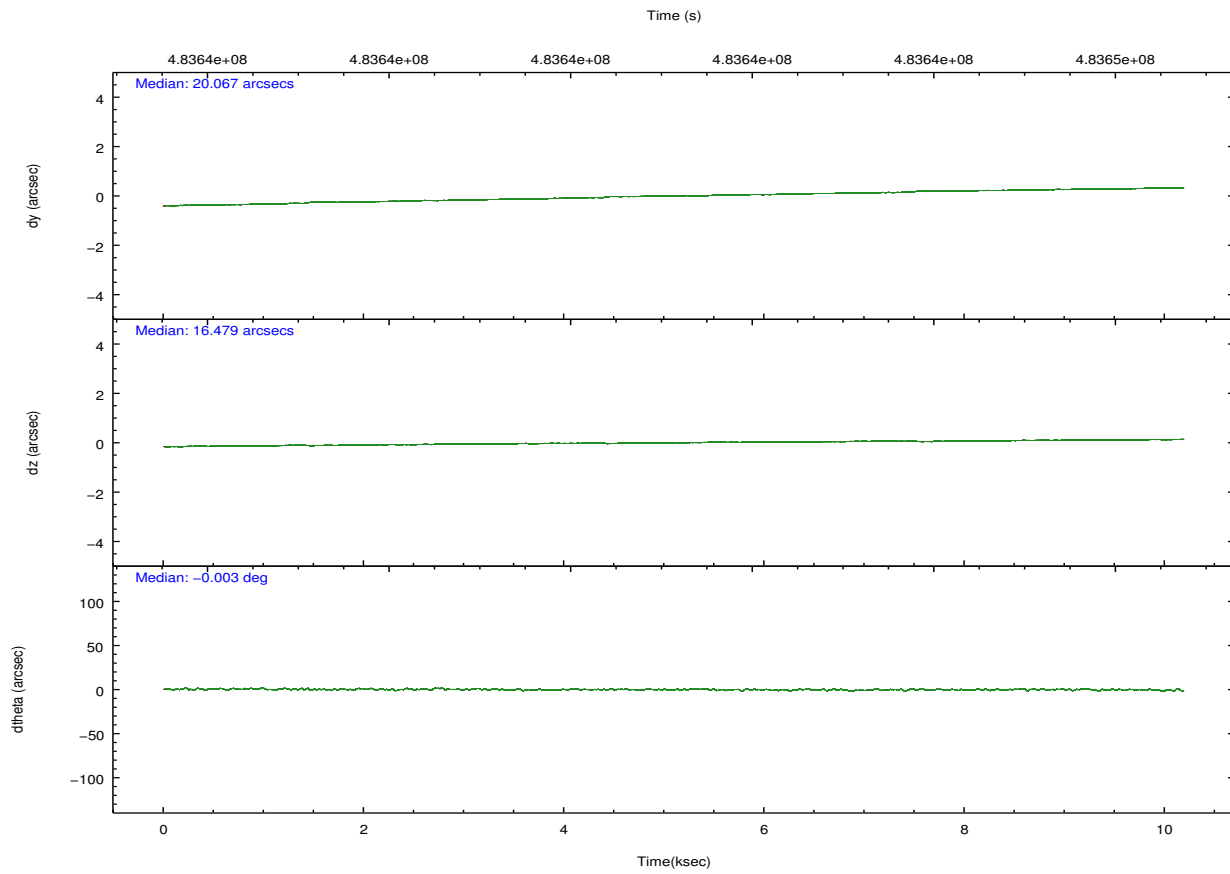
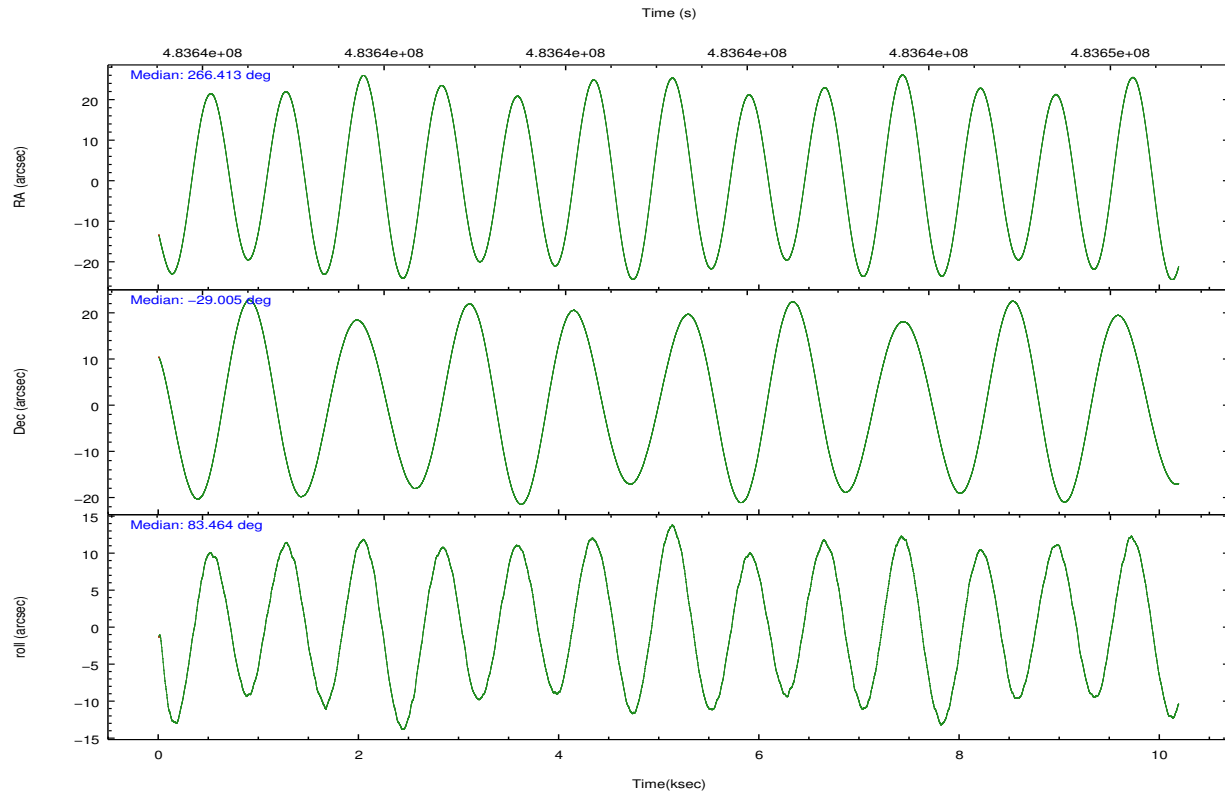
	segment 1	segment 2	segment 3
level 1 events	741	563803	6
rejected events	5	3463	4
rejected %	0%	0%	66%

2.2 Compared Parameters

Parameter	Planned	Actual	Parameter	Planned	Actual
Instrument	HRC	HRC	Obspar format version number	7	7
Detector	HRC-S	HRC-S	Obspar file type	PREDICTED	ACTUAL
Grating	NONE	NONE	Obspar update status	NONE	UPDATED
Data mode	OBSERVING	OBSERVING			
Observation mode	POINTING	POINTING			
[deg] Pointing RA	266.427657	266.4129529409828			
[deg] Pointing Dec	-29.030894	-29.00525250576788			
[deg] Pointing Roll	83.412438	83.47264749040673			
[mm] SIM focus pos	-1.429586	-1.428180813131781			
[mm] SIM defocus	0.1037507710433287	0.1051558262725154			
[mm] SIM translation stage pos	250.455976	250.466033080201			
[mm] SIM translation stage offset	0	-0.01005468664627074			
[s] Observation start time (MET)	483636226.184000	483635652.2953			
Observation start date	2013-04-29T15:22:39	2013-04-29T15:14:12			
[s] Observation end time (MET)	483646226.184000	483646490.64589			
Observation end date	2013-04-29T18:09:19	2013-04-29T18:14:50			

2.3 Aspect





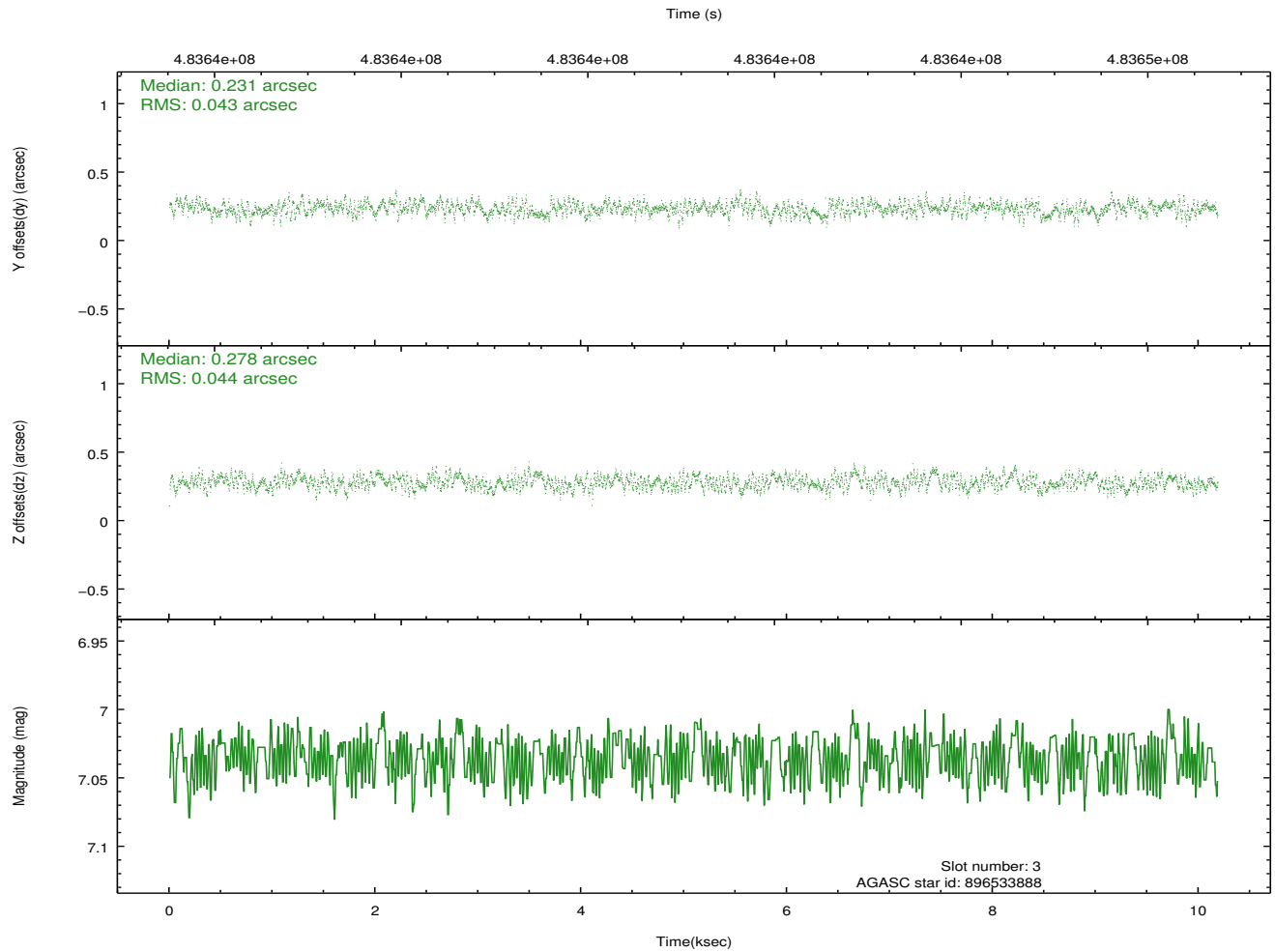
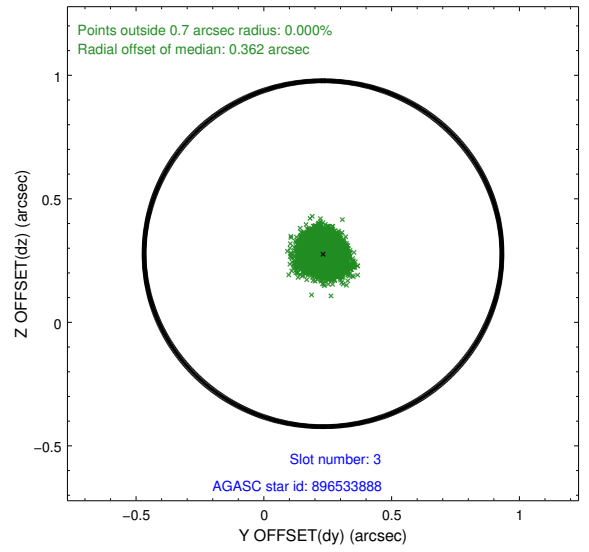
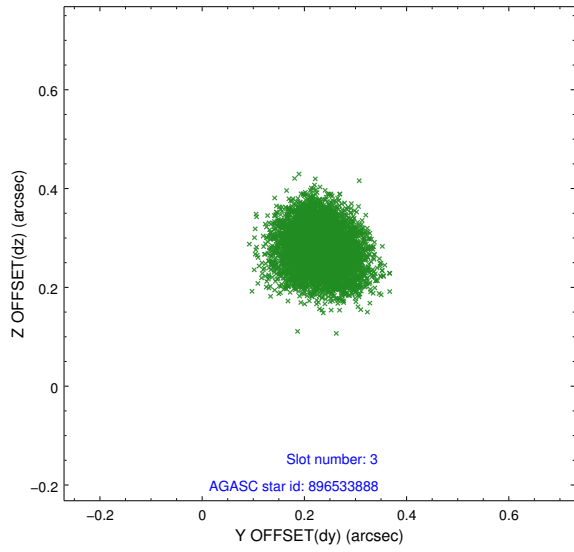
Slot Statistics

slot	status	used	id	mag	n_pts	med_dy	med_dz	dr1	dr2	ra	dec	mean_y	mean_z
0	FID		HRC-S-1	7.01	2485	0.009	-0.157	0.012	0.020	0.000000	0.000000	-1174.67	-465.38
1	FID		HRC-S-2	6.98	2485	0.260	-0.104	0.015	0.024	0.000000	0.000000	1224.79	-458.17
2	FID		HRC-S-3	7.01	2485	0.120	-0.042	0.010	0.015	0.000000	0.000000	-1176.78	564.08
3	GUIDE	used	896533888	7.03	4970	0.231	0.278	0.067	0.103	266.666434	-29.392757	-1208.12	-893.67
4	GUIDE	used	896534664	8.21	4967	-0.678	-0.376	0.076	0.125	266.405570	-28.407461	2221.02	326.50
5	GUIDE	used	896538208	7.97	4970	-0.036	0.297	0.073	0.117	267.176969	-28.671626	1550.17	-2203.30
6	GUIDE	used	896541576	8.19	4967	0.131	0.204	0.074	0.123	267.051055	-28.762912	1180.13	-1844.59
7	GUIDE	used	896403224	8.29	4968	0.351	-0.409	0.089	0.143	265.612825	-29.438915	-1760.68	2366.91

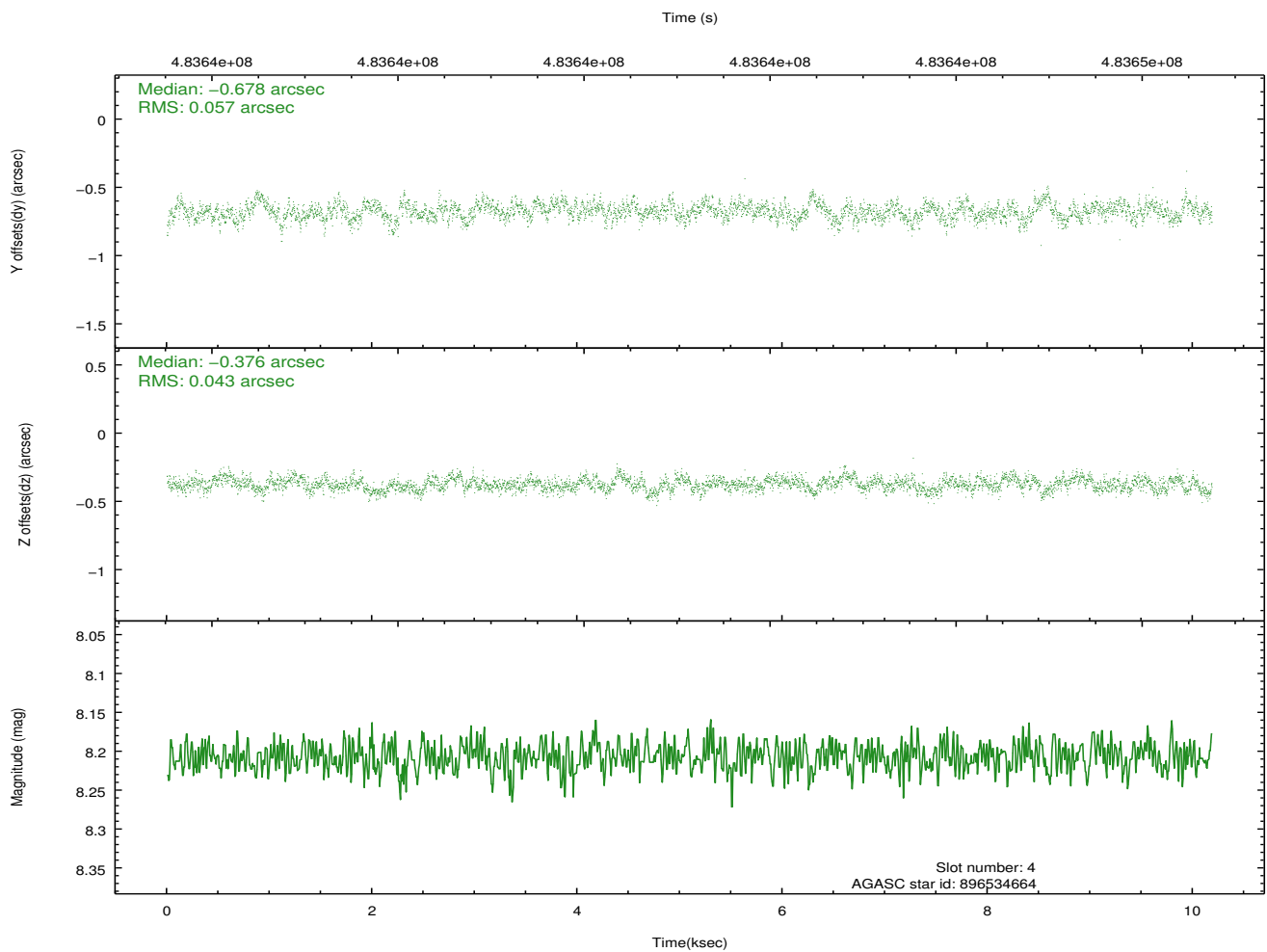
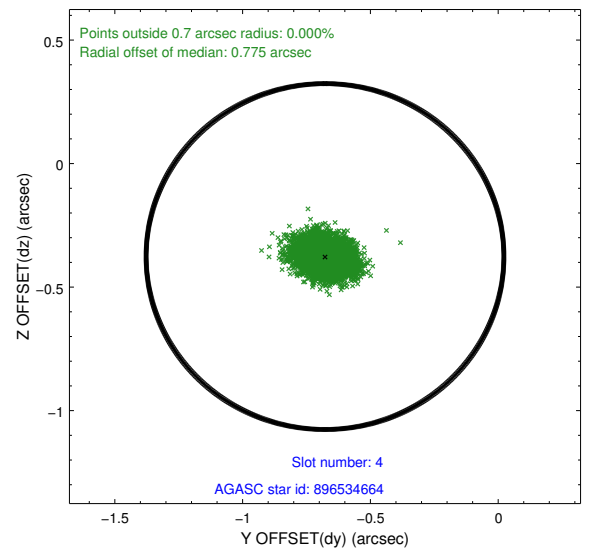
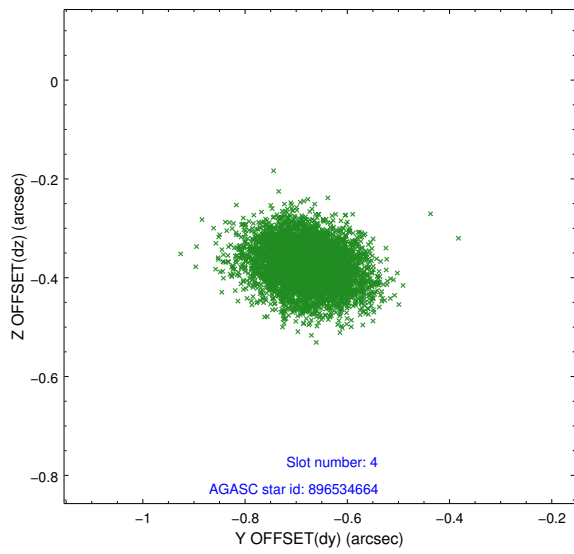
∞

2.4 Star Slots

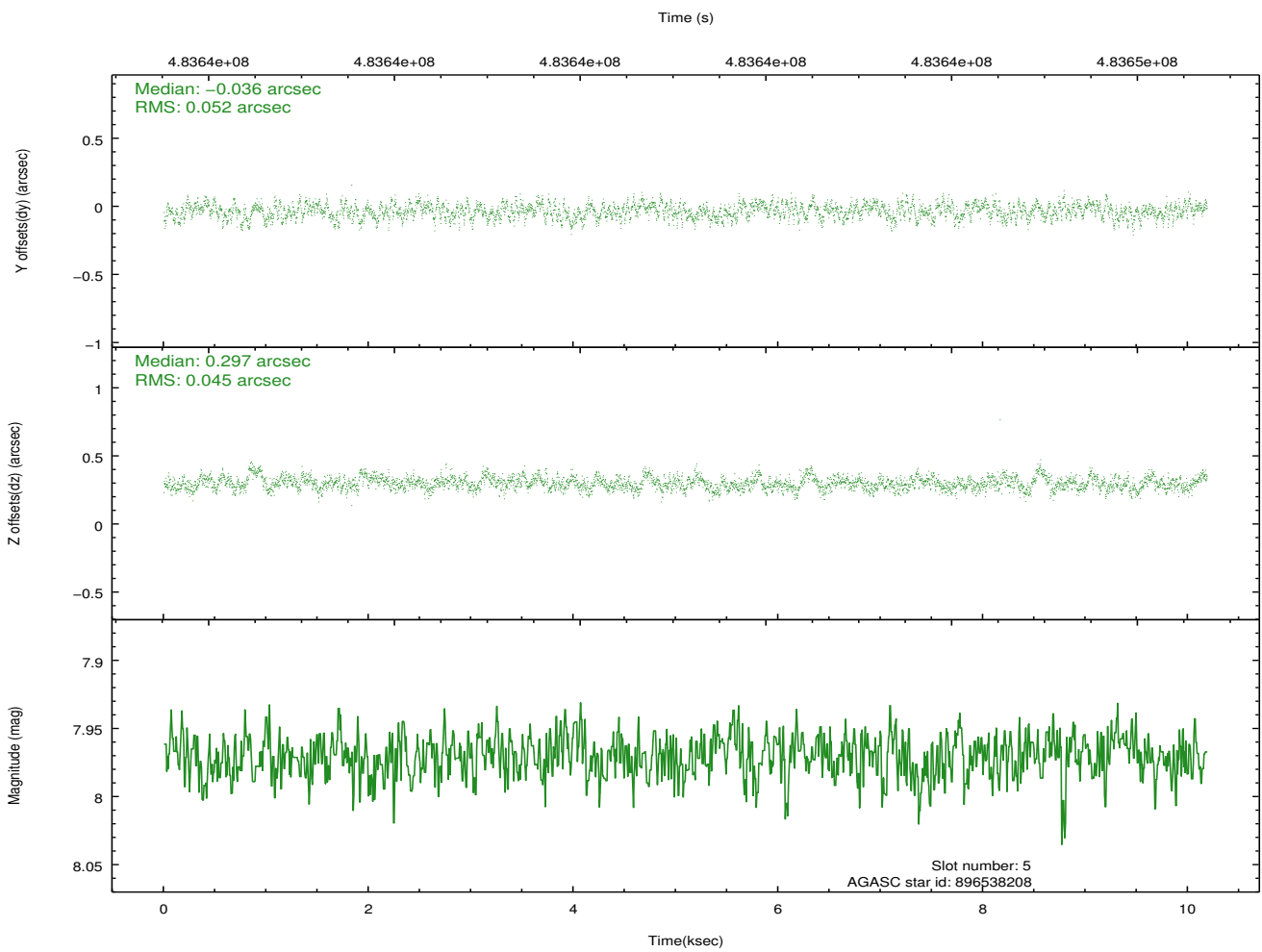
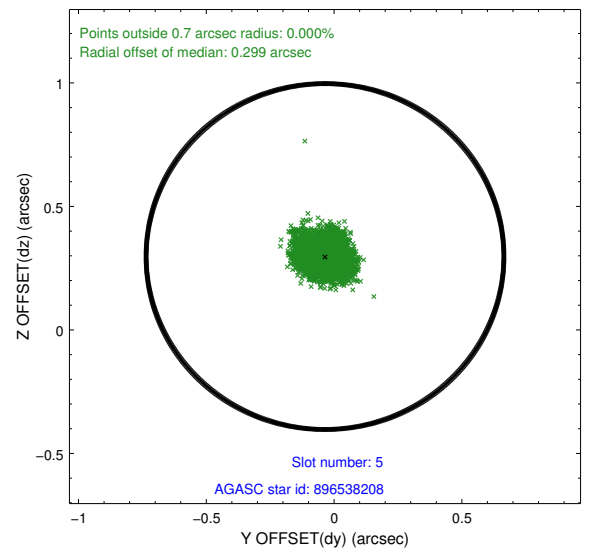
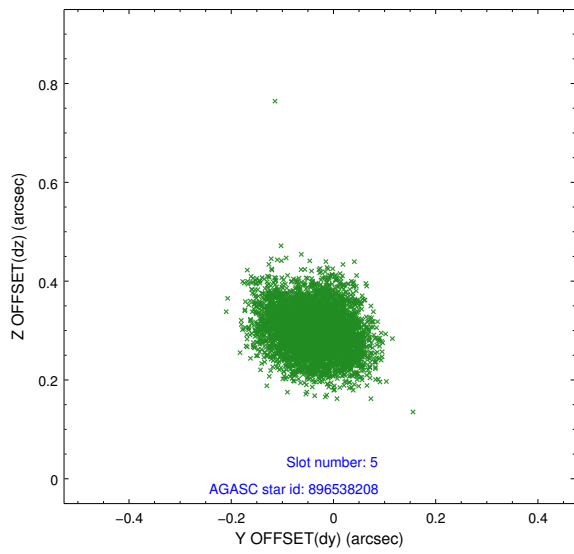
2.4.1 Slot 3



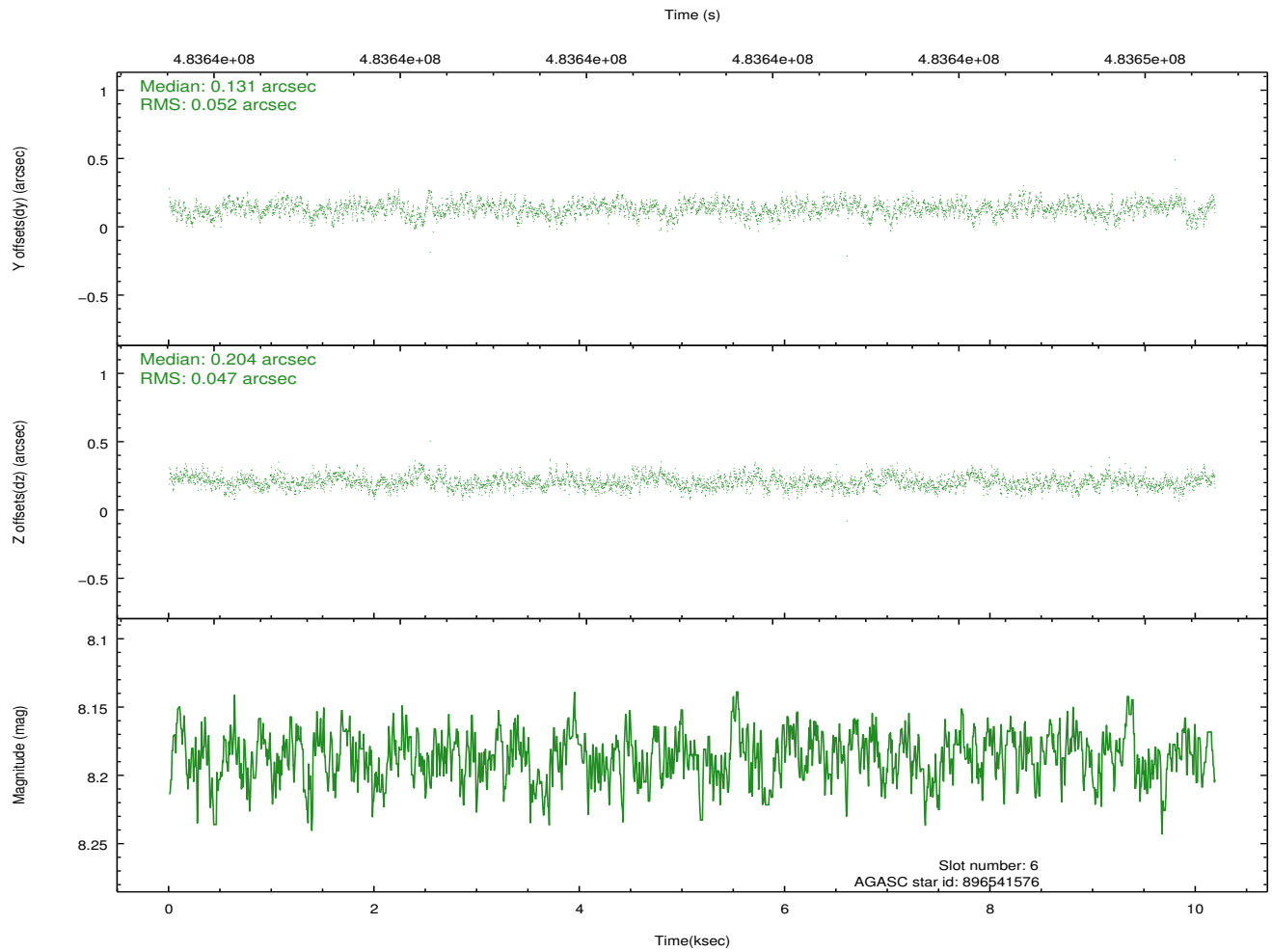
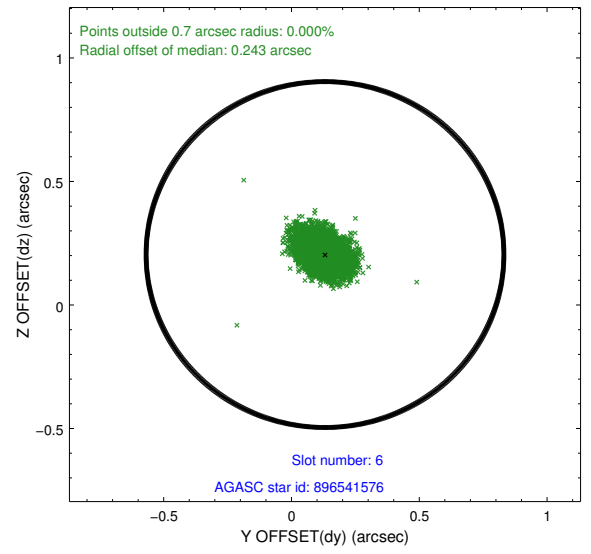
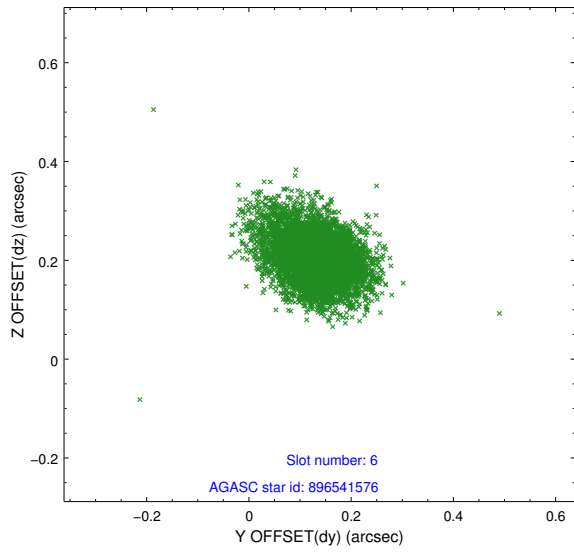
2.4.2 Slot 4



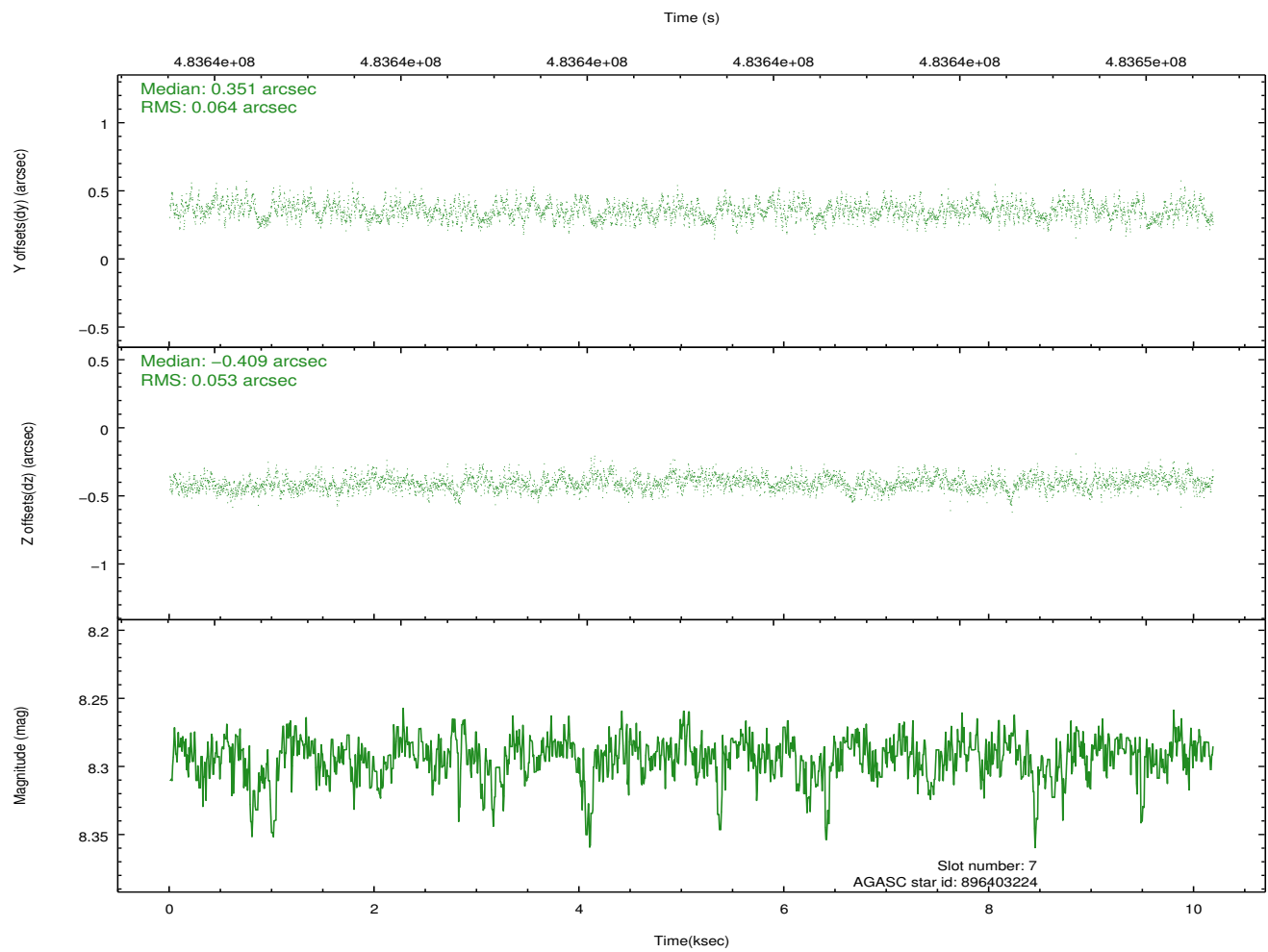
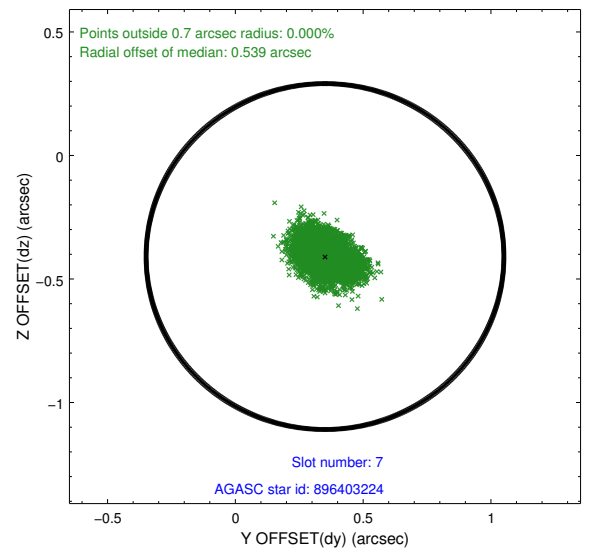
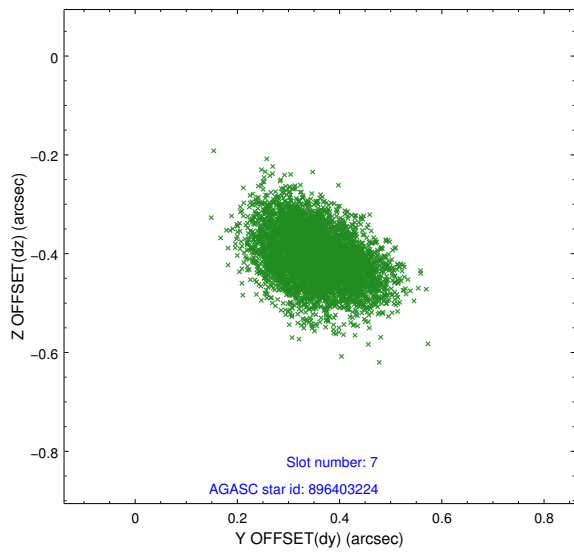
2.4.3 Slot 5



2.4.4 Slot 6

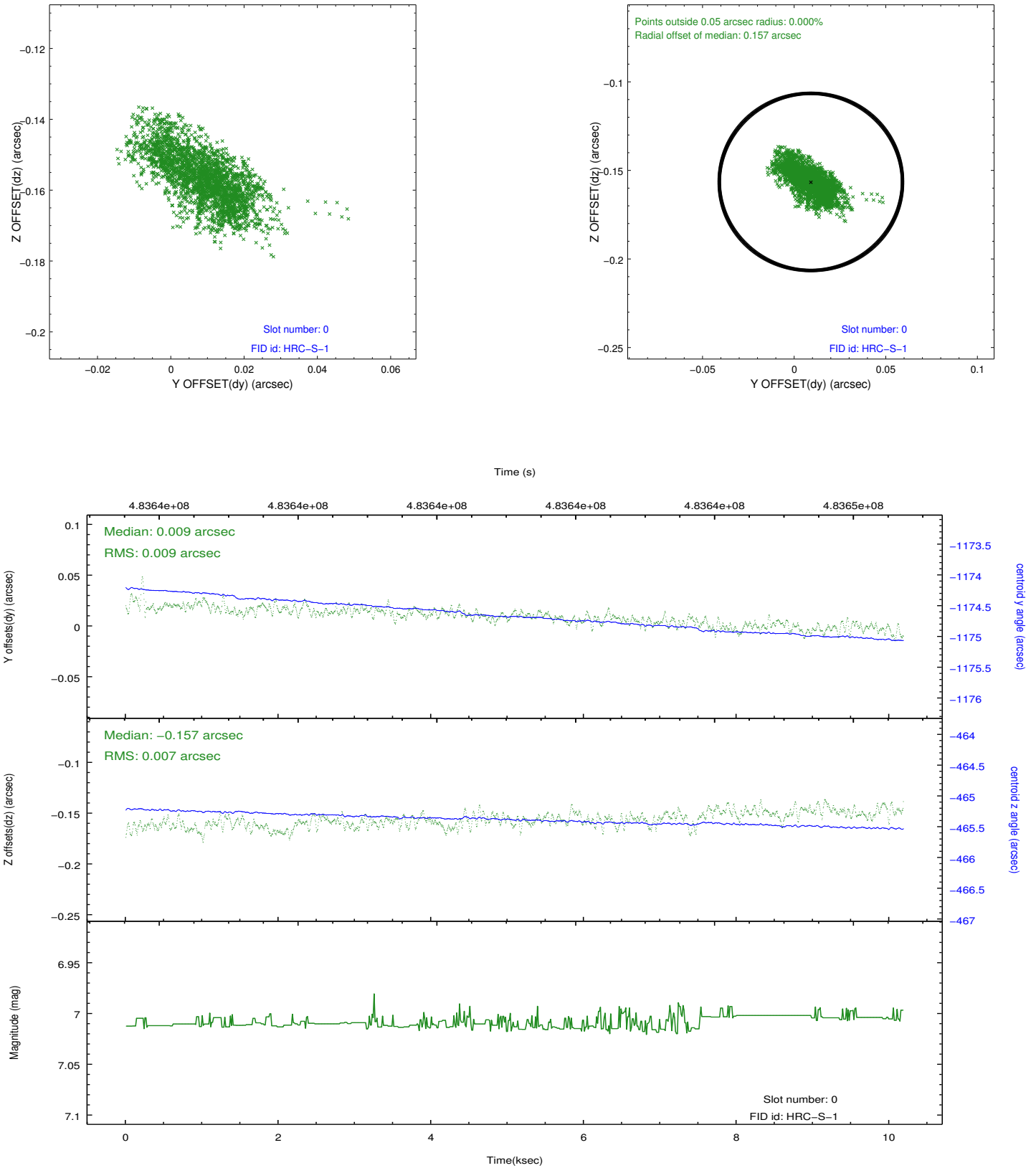


2.4.5 Slot 7

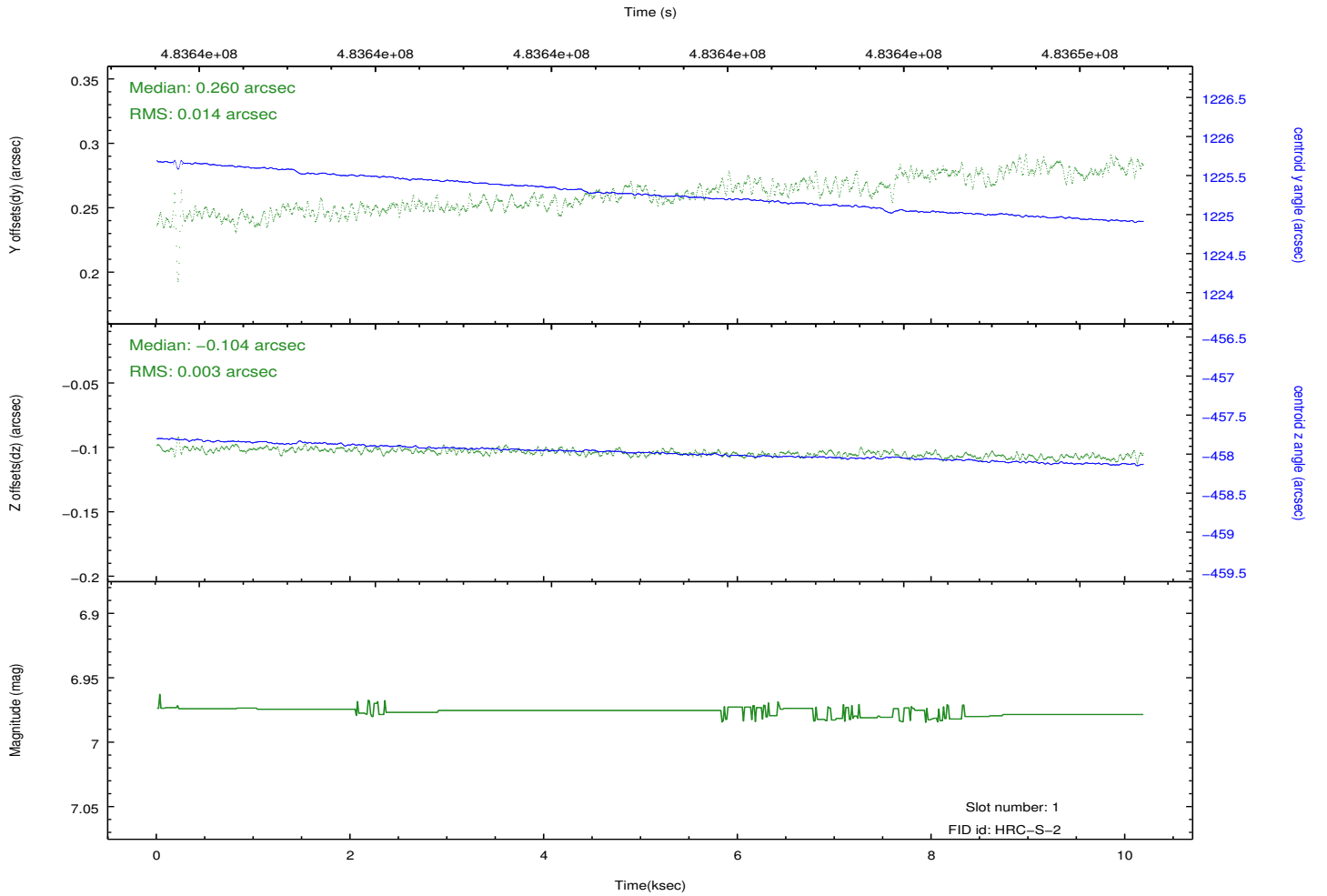
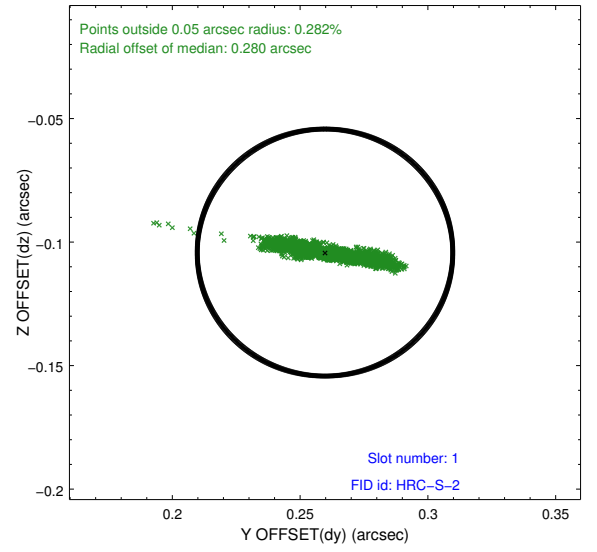
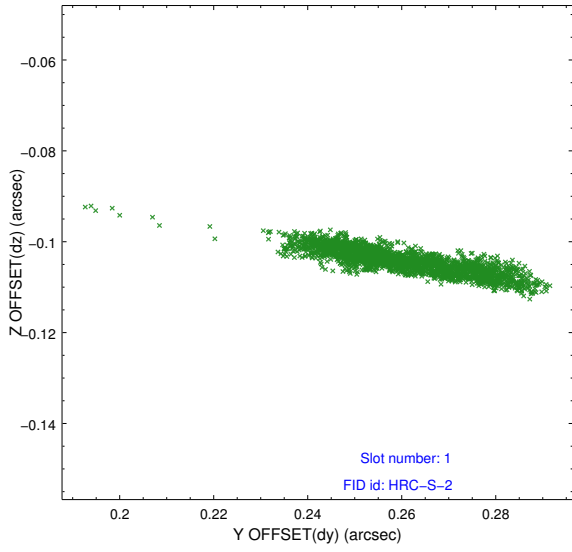


2.5 FID Slots

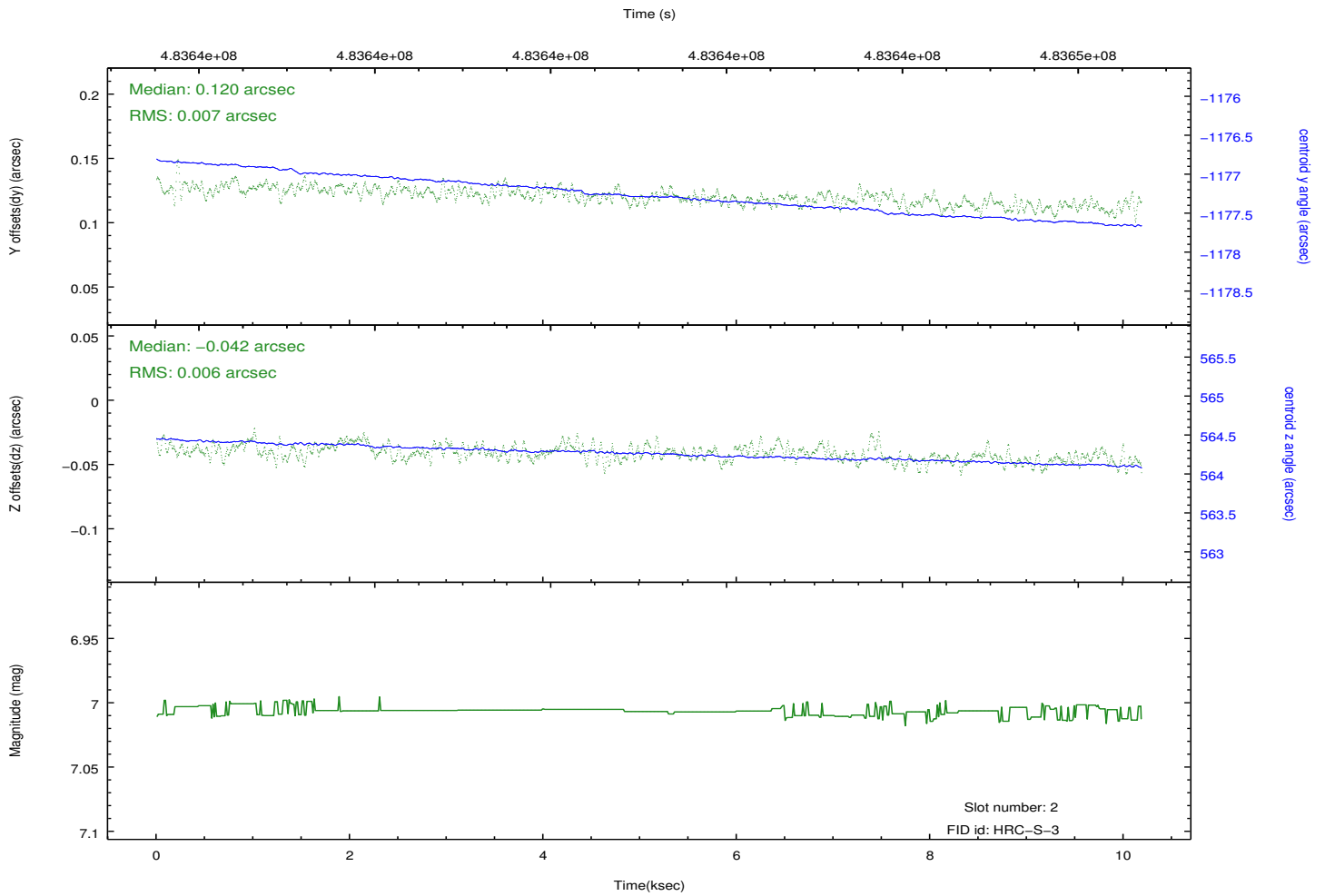
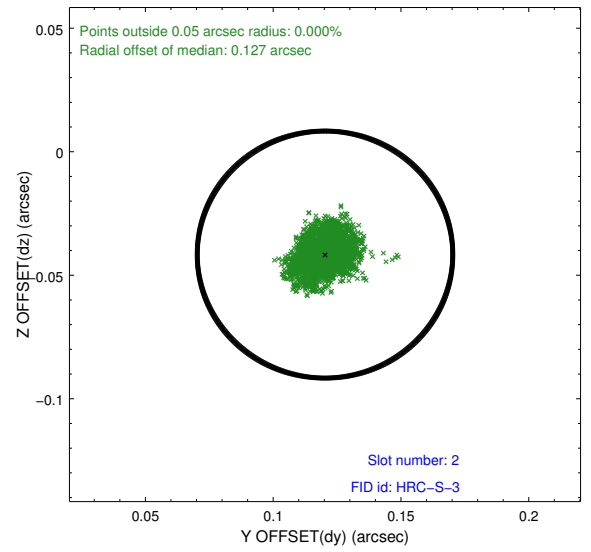
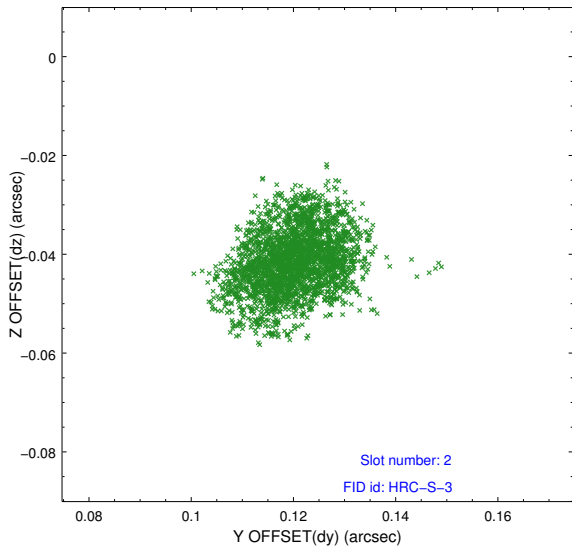
2.5.1 Slot 0



2.5.2 Slot 1



2.5.3 Slot 2



A Summary

A.1 Status

V&V Scientist	Jen Lauer
V&V Date (YYYY-MM-DD)	2014.12.10
V&V Edition	1
V&V Disposition and Status	OK
V&V Charge Time	9.7510817787647

A.2 Comments

These data have been reprocessed with new aspect alignment calibration files that correct small mean offsets (up to 0.4 arcsecs) and improve overall astrometric accuracy. The new calibration was determined using data from the time period being reprocessed and was performed using cross-correlation of X-ray sources with radio and optical counterparts.