

V&V Reference Report

L2 ASCDS Version : 8.5.1.1

Observation 14941 - L2 Version 2
Chandra X-Ray Center

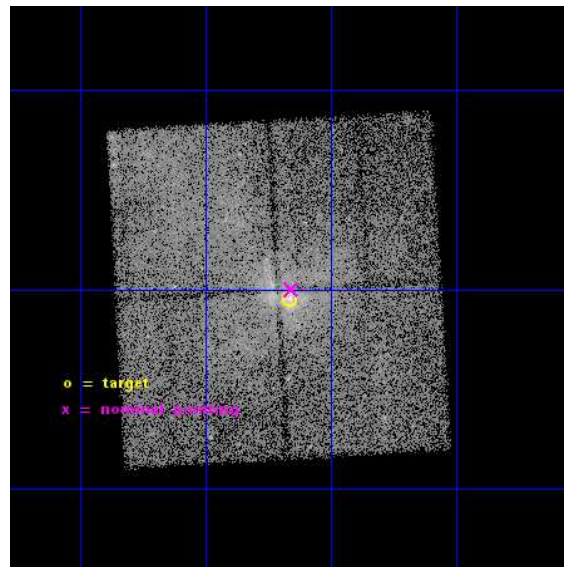
L2 Processing Date : Dec 2 2014

Contents

1	Front	2
2	OBI	3
2.1	OBI	3
2.1.1	Images	3
2.1.2	Bias	3
2.1.3	Parameters	4
2.1.4	Events	4
2.2	Compared Parameters	5
2.3	Aspect	6
2.4	Star Slots	9
2.4.1	Slot 3	9
2.4.2	Slot 4	10
2.4.3	Slot 5	11
2.4.4	Slot 6	12
2.4.5	Slot 7	13
2.5	FID Slots	14
2.5.1	Slot 0	14
2.5.2	Slot 1	15
2.5.3	Slot 2	16
A	Summary	17
A.1	Status	17
A.2	Comments	17

1 Front

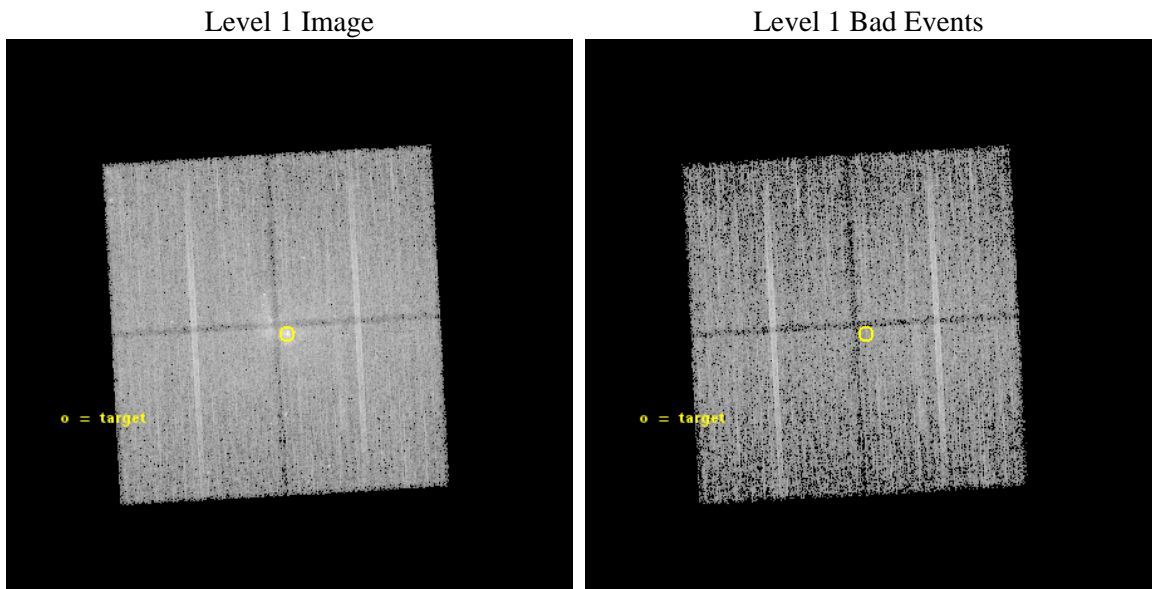
seq_num	601071	Sequence number
obs_id	14941	Observation id
title	Monitoring the Tidal Disruption of a Gas Cloud Approaching Sgr A*	
observer	Dr. Frederick Baganoff	Principal investigator
object	Sgr A*	Source name
dtcycle	0	
cycle	P	events from which exps? Prim/Second/Both
ra_targ	266.416667	Observer's specified target RA [deg]
dec_targ	-29.007806	Observer's specified target Dec [deg]
ra_nom	266.41442698384	Nominal RA [deg]
dec_nom	-28.999961330742	Nominal Dec [deg]
roll_nom	86.780202011387	Nominal Roll [deg]
revision	2	Processing version of data
ontime	20081.701309085	Sum of GTIs [s]
livetime	19819.319097548	Livetime [s]
ontime0	20087.860179782	Sum of GTIs [s]
ontime1	20087.901219785	Sum of GTIs [s]
ontime2	20084.80123955	Sum of GTIs [s]
ontime3	20081.701309085	Sum of GTIs [s]
l2events	120404	Number of level 2 events



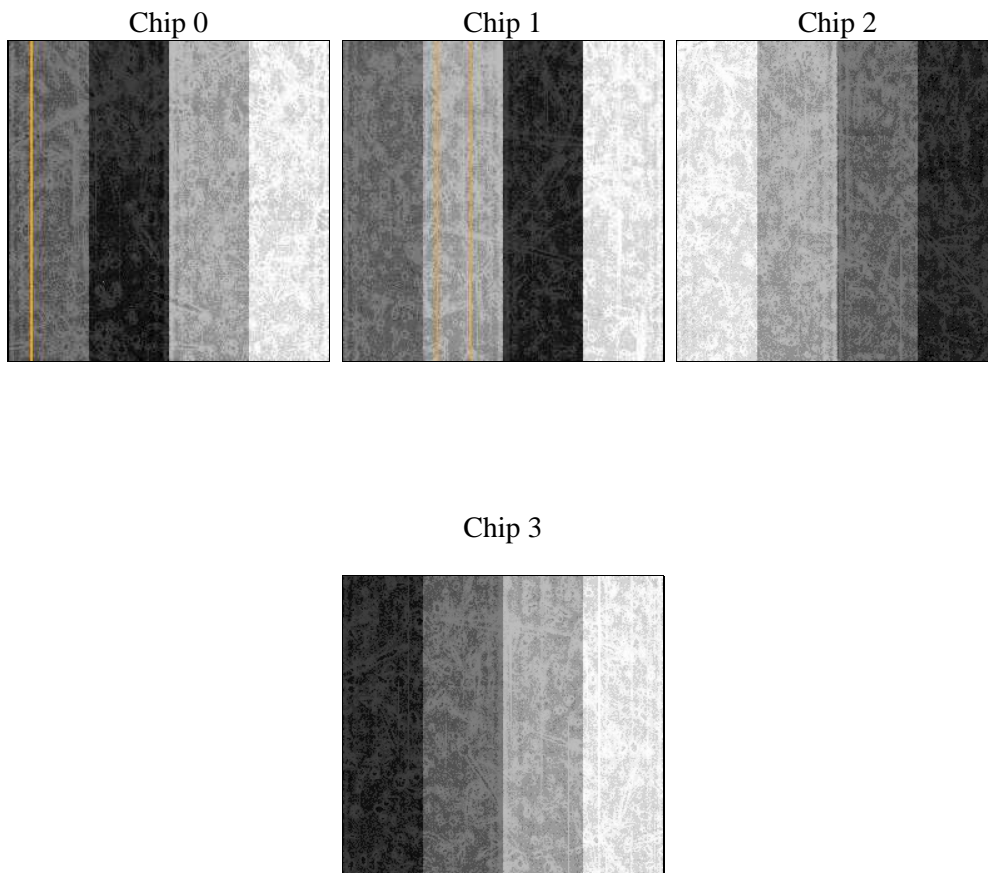
2 OBI

2.1 OBI

2.1.1 Images



2.1.2 Bias



2.1.3 Parameters

obi_num	0	Obi number	sched_exp_time	20000.583000	[s] Scheduled observation exposure time
ascdsver	10.3	Processing system revision	ontime	20081.701309085	Sum of GTIs [s]
caldsver	4.6.4	 	ontime0	20087.860179782	Sum of GTIs [s]
date	2014-12-02T15:58:40	Date and time of file creation	ontime1	20087.901219785	Sum of GTIs [s]
revision	2	Processing version of data	ontime2	20084.80123955	Sum of GTIs [s]
			ontime3	20081.701309085	Sum of GTIs [s]
			l1events	499173	Number of level 1 events

2.1.4 Events

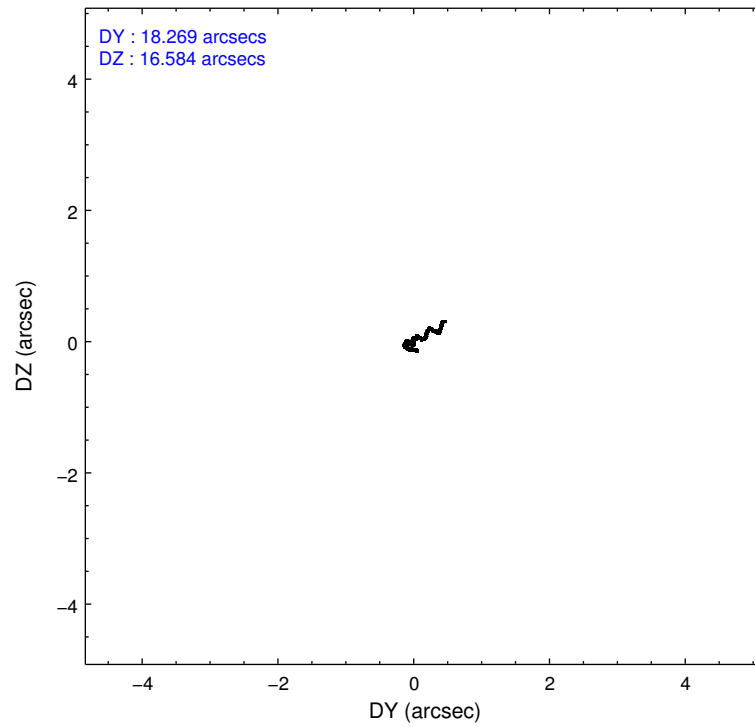
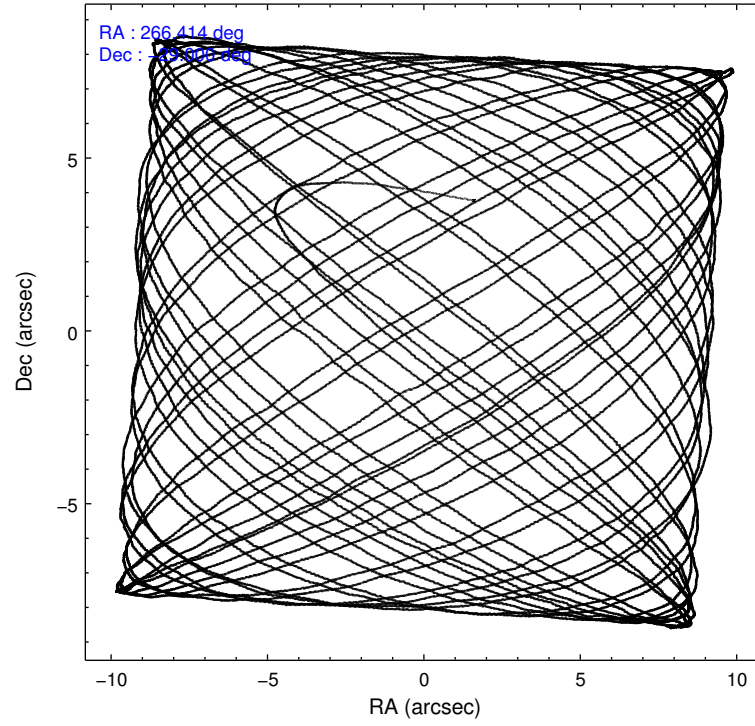
	ccd 0	ccd 1	ccd 2	ccd 3
level 1 events	129574	121018	121682	126899
rejected events	87607	89246	94735	94138
rejected %	67%	73%	77%	74%

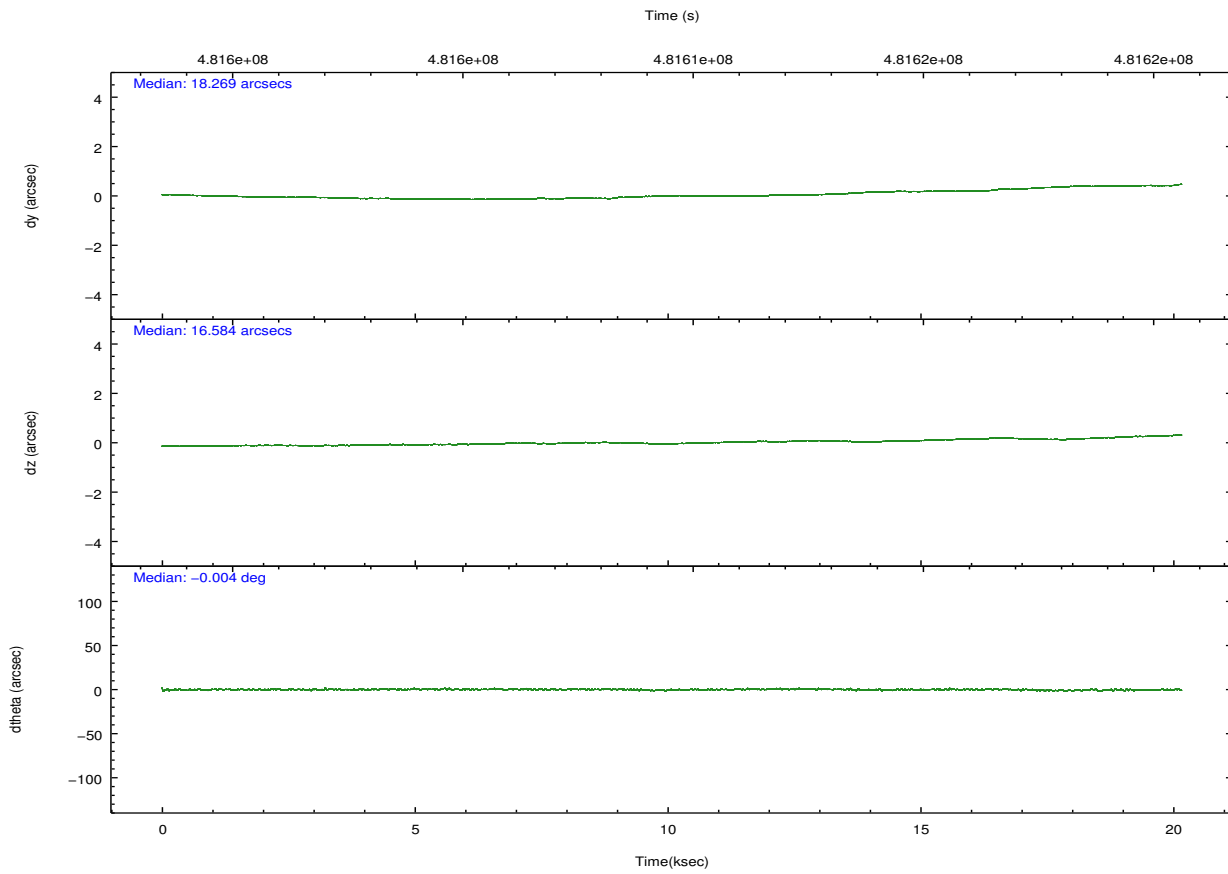
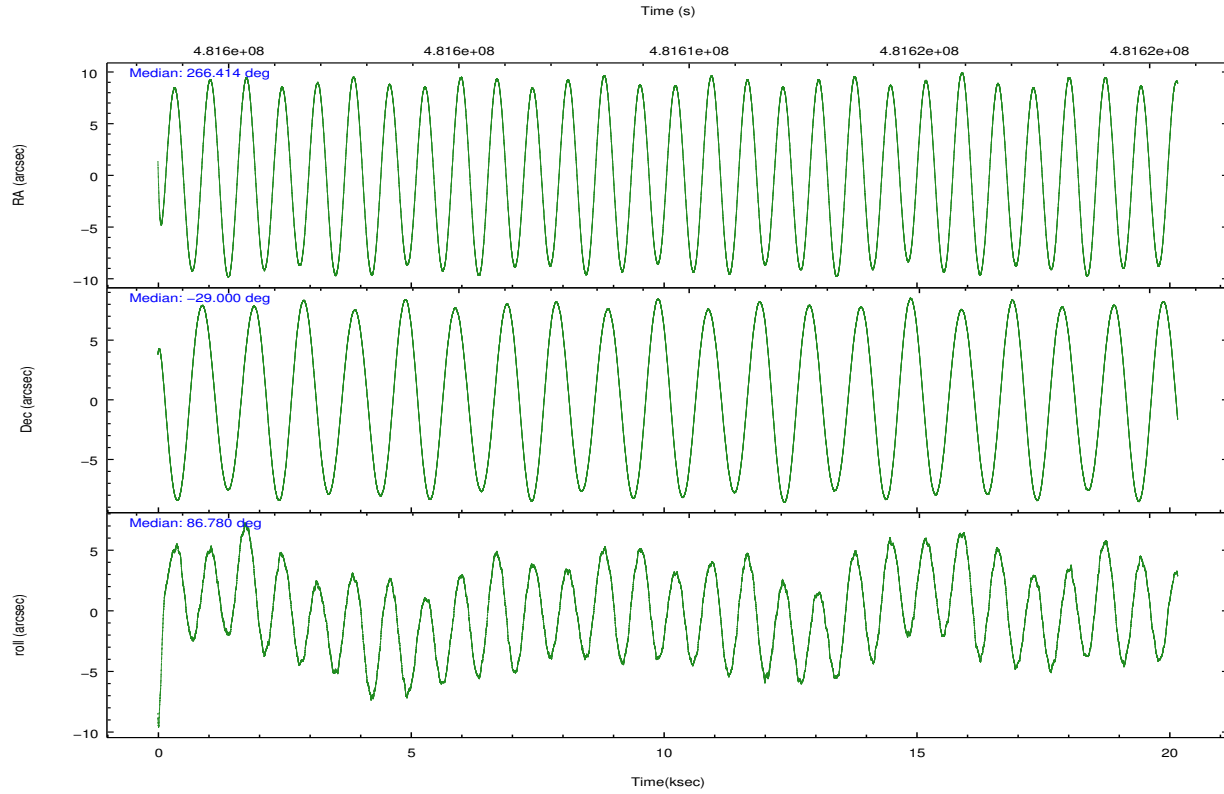
	ccd 0	ccd 1	ccd 2	ccd 3
grade 0 events	24890	17256	14818	18523
	19%	14%	12%	14%
grade 1 events	151	93	125	140
	0%	0%	0%	0%
grade 2 events	7185	5957	4825	5460
	5%	4%	3%	4%
grade 3 events	2624	2096	1962	2294
	2%	1%	1%	1%
grade 4 events	2643	2215	1983	2336
	2%	1%	1%	1%
grade 5 events	5313	5351	4810	5783
	4%	4%	3%	4%
grade 6 events	4633	4259	3366	4165
	3%	3%	2%	3%
grade 7 events	82135	83791	89793	88198
	63%	69%	73%	69%

2.2 Compared Parameters

Parameter	Planned	Actual	Parameter	Planned	Actual
Instrument	ACIS	ACIS	Obspar format version number	7	7
Detector	ACIS-0123	ACIS-0123	Obspar file type	PREDICTED	ACTUAL
Grating	NONE	NONE	Obspar update status	NONE	UPDATED
Data mode	FAINT	FAINT	Number of optional ACIS chips dropped	0	0
Observation mode	POINTING	POINTING	On-chip summing requested	N	N
[deg] Pointing RA	266.428696	266.4144269838353	Subarray requested	NONE	NONE
[deg] Pointing Dec	-29.024463	-28.99996133074212	Alternating exposures requested	N	N
[deg] Pointing Roll	86.578438	86.78020201138716	[s] Primary exposure time	0.000000	3.1
[s] Window start time (MET)	480643267.184000	480643267.184000			
[s] Window stop time (MET)	481852867.184000	481852867.184000			
[mm] SIM focus pos	-0.782348	-0.7809083437167272			
[mm] SIM defocus	0	0.001439871863259334			
[mm] SIM translation stage pos	-233.592463	-233.5874344608287			
[mm] SIM translation stage offset	0	-0.005018542100998502			
[s] Observation start time (MET)	481599611.184000	481598607.67246			
Observation start date	2013-04-06T01:39:04	2013-04-06T01:23:27			
[s] Observation end time (MET)	481619611.184000	481619848.74861			
Observation end date	2013-04-06T07:12:24	2013-04-06T07:17:28			
Read mode	TIMED	TIMED			

2.3 Aspect





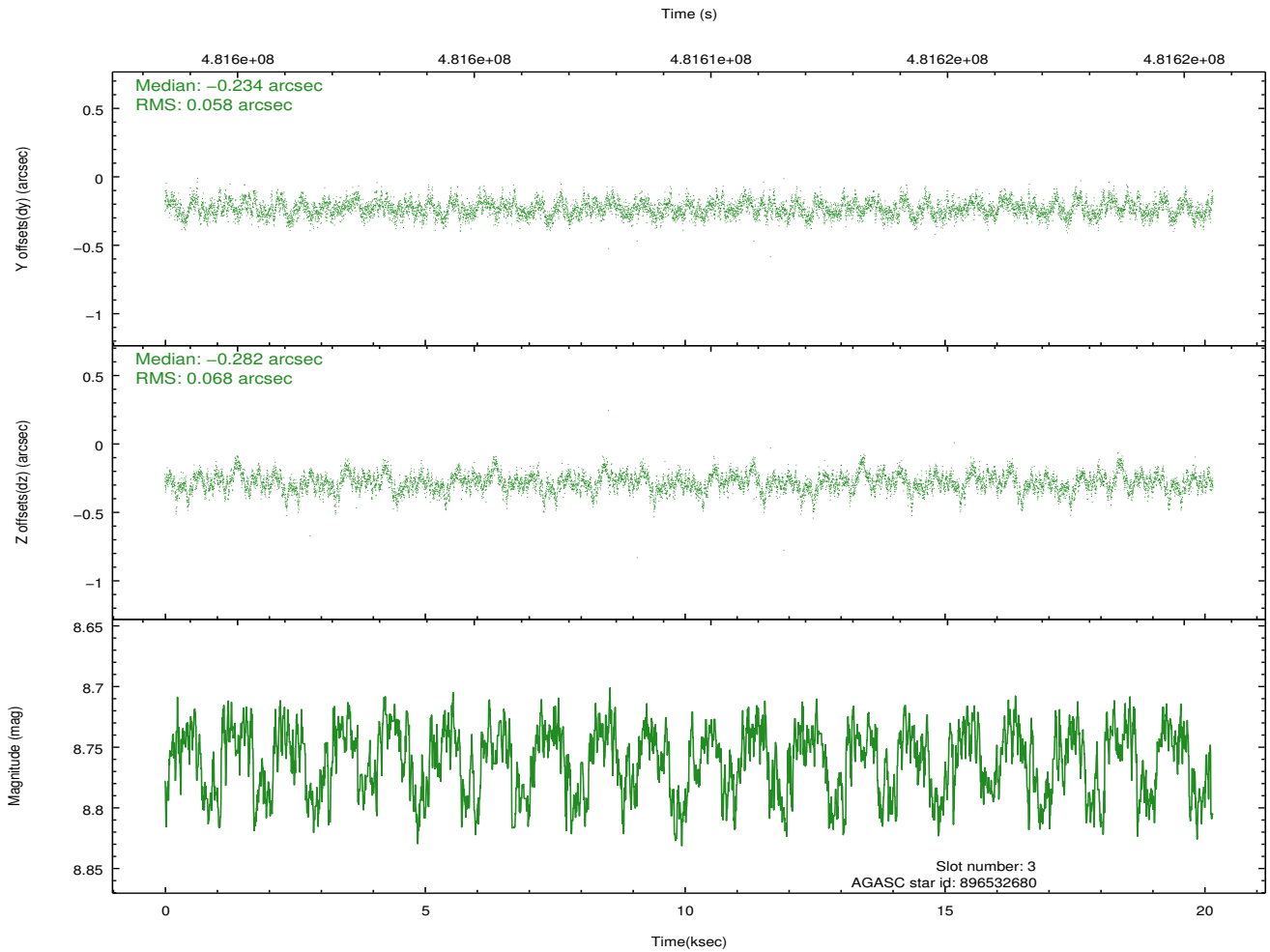
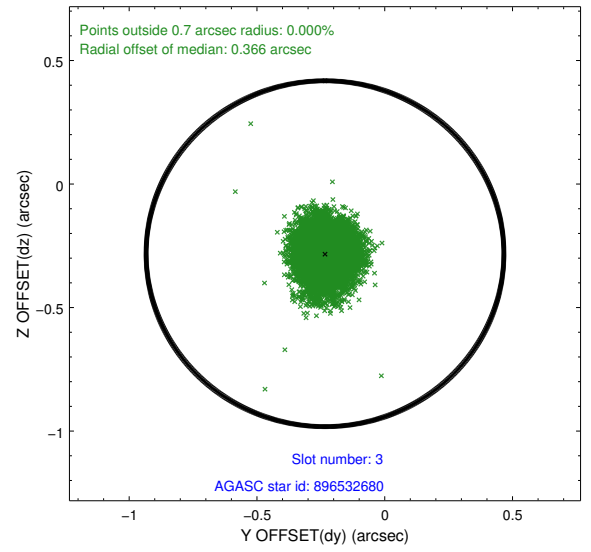
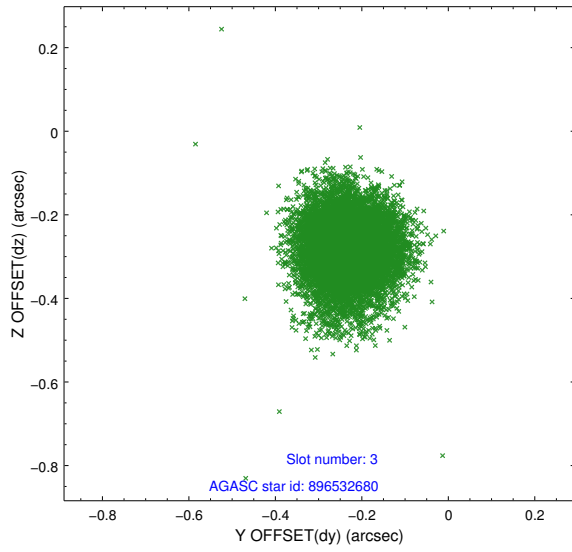
Slot Statistics

slot	status	used	id	mag	n_pts	med_dy	med_dz	dr1	dr2	ra	dec	mean_y	mean_z
0	FID		ACIS-I-1	7.15	4919	0.103	-0.041	0.008	0.015	0.000000	0.000000	921.17	-840.25
1	FID		ACIS-I-2	7.05	4919	-0.020	-0.069	0.010	0.018	0.000000	0.000000	-772.94	-846.87
2	FID		ACIS-I-5	7.14	4919	-0.176	0.181	0.008	0.014	0.000000	0.000000	-1827.53	1057.27
3	GUIDE	used	896532680	8.76	9820	-0.234	-0.282	0.094	0.155	266.342632	-28.496299	1881.43	385.19
4	GUIDE	used	896533888	7.04	9838	0.391	0.125	0.065	0.105	266.666434	-29.392757	-1279.13	-823.24
5	GUIDE	used	896534664	8.21	9833	-0.730	-0.134	0.062	0.100	266.405570	-28.407461	2212.03	205.63
6	GUIDE	used	896537176	8.04	9836	-0.053	0.159	0.077	0.122	266.498272	-28.678259	1257.36	-144.63
7	GUIDE	used	896537776	7.52	9836	0.620	0.131	0.065	0.102	266.655684	-29.665673	-2261.78	-846.40

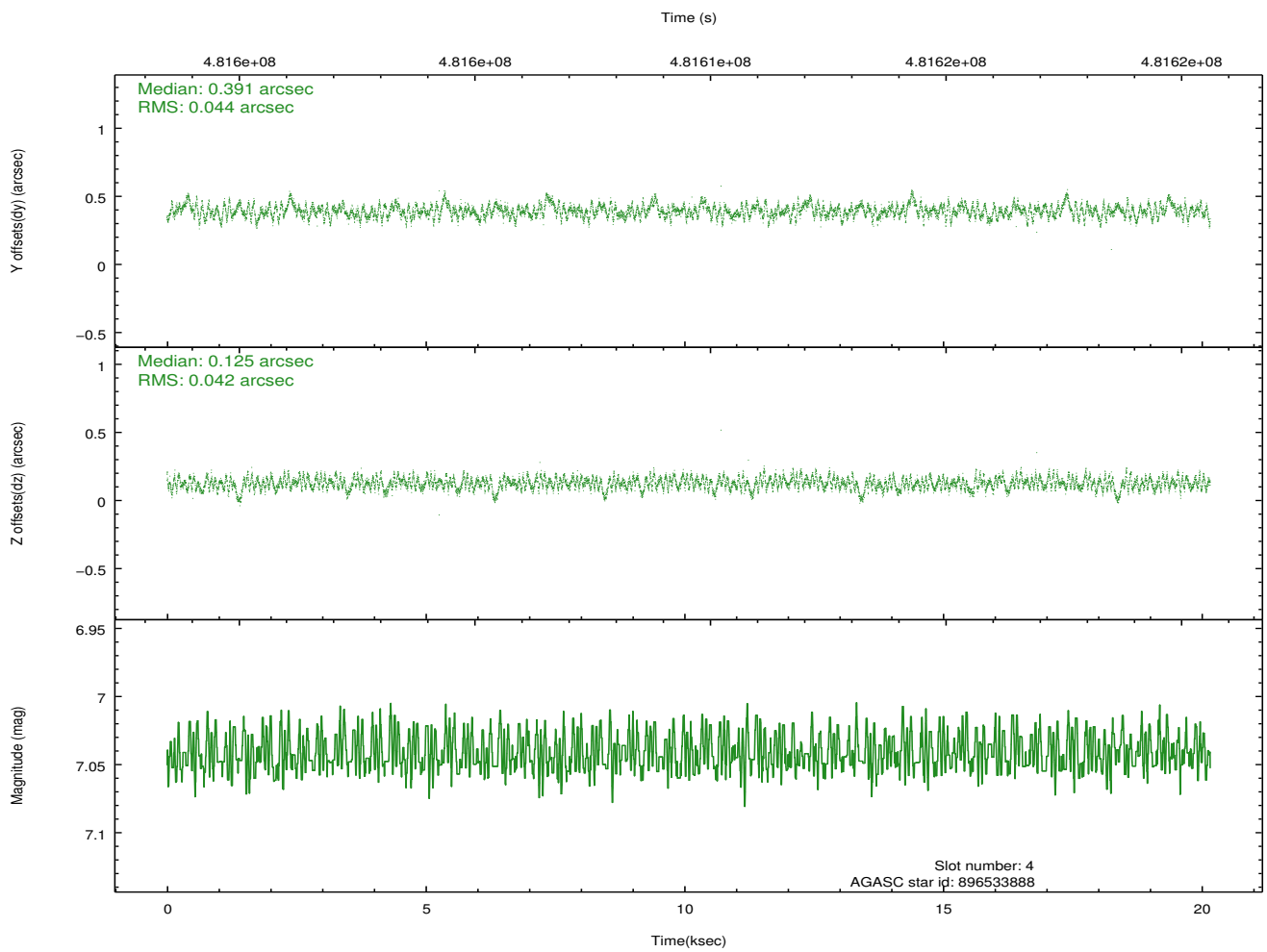
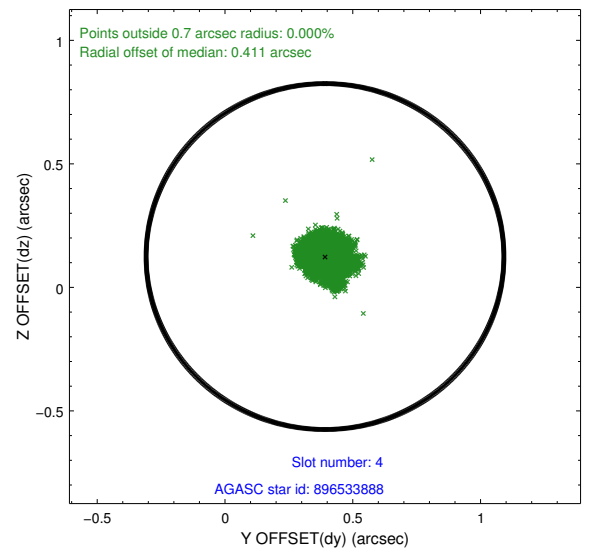
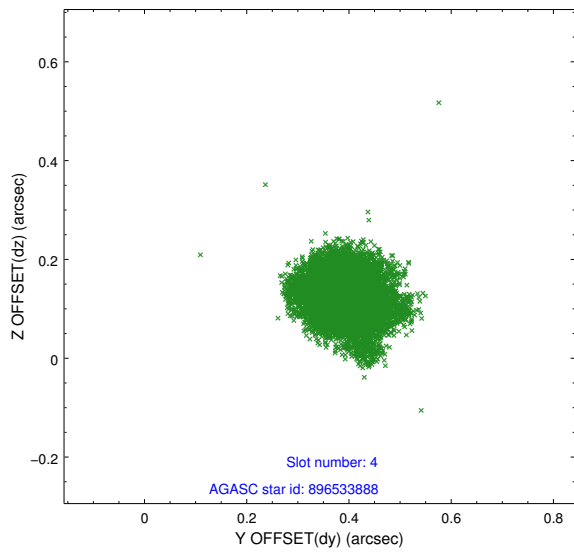
∞

2.4 Star Slots

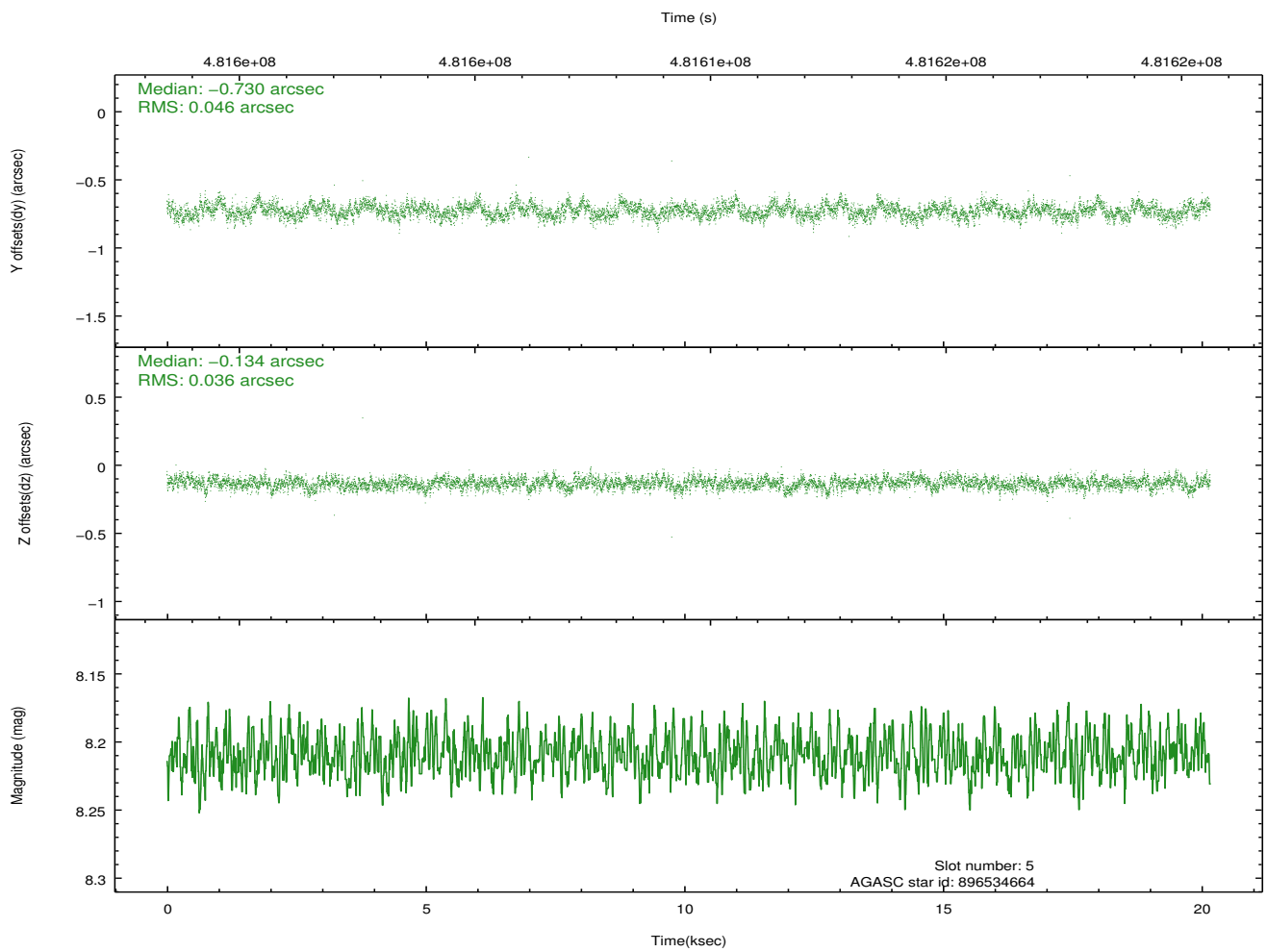
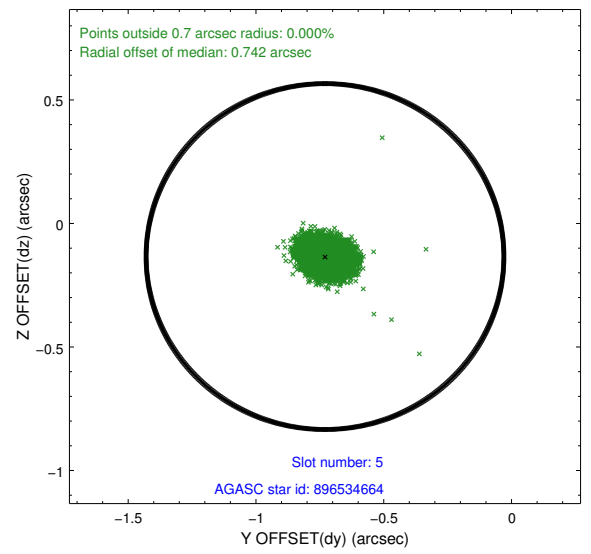
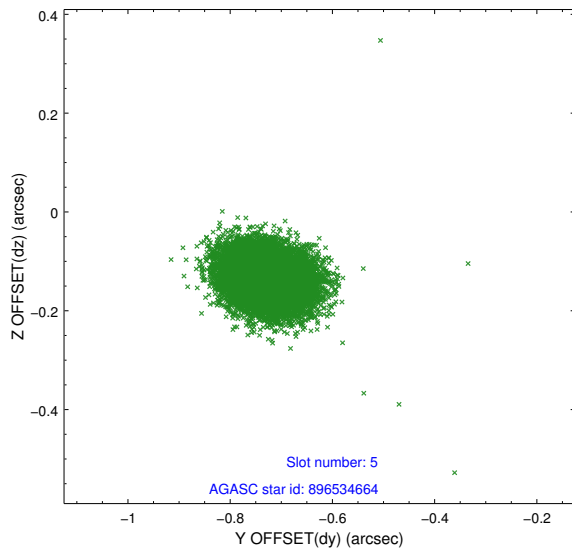
2.4.1 Slot 3



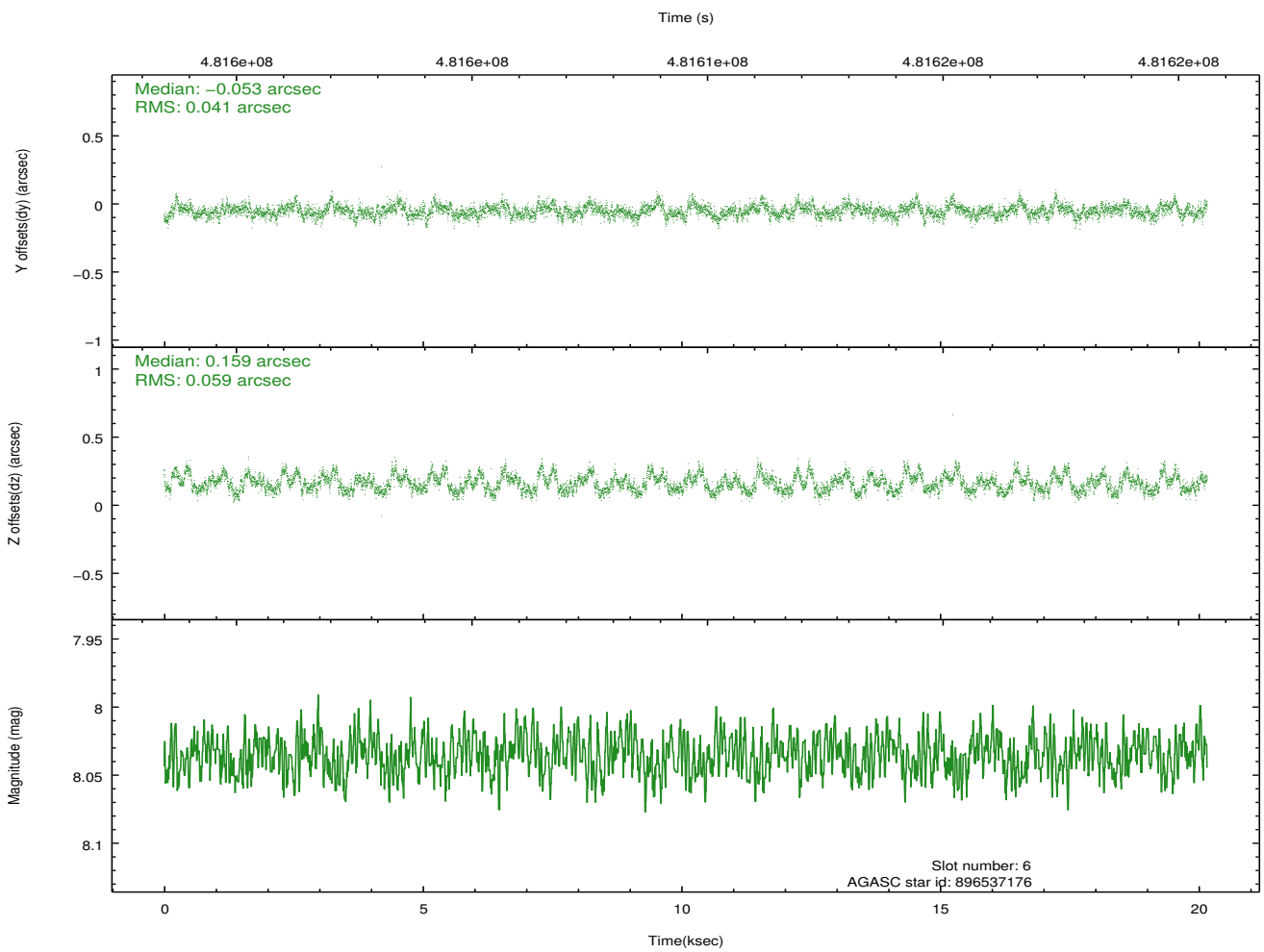
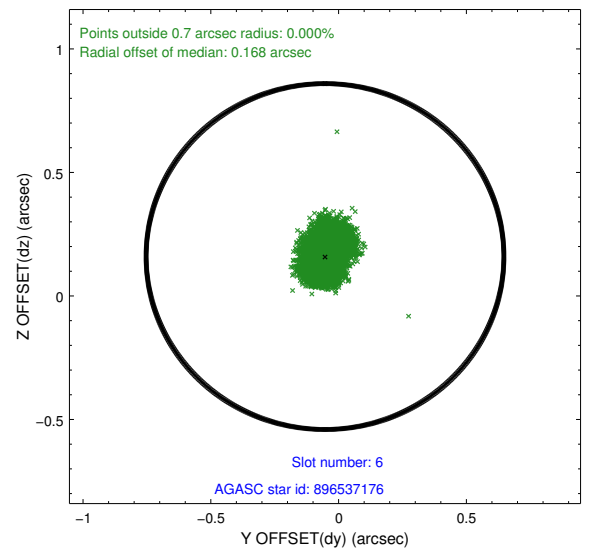
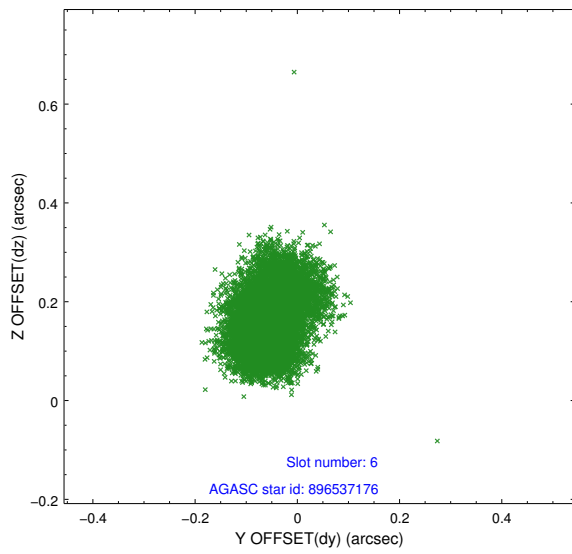
2.4.2 Slot 4



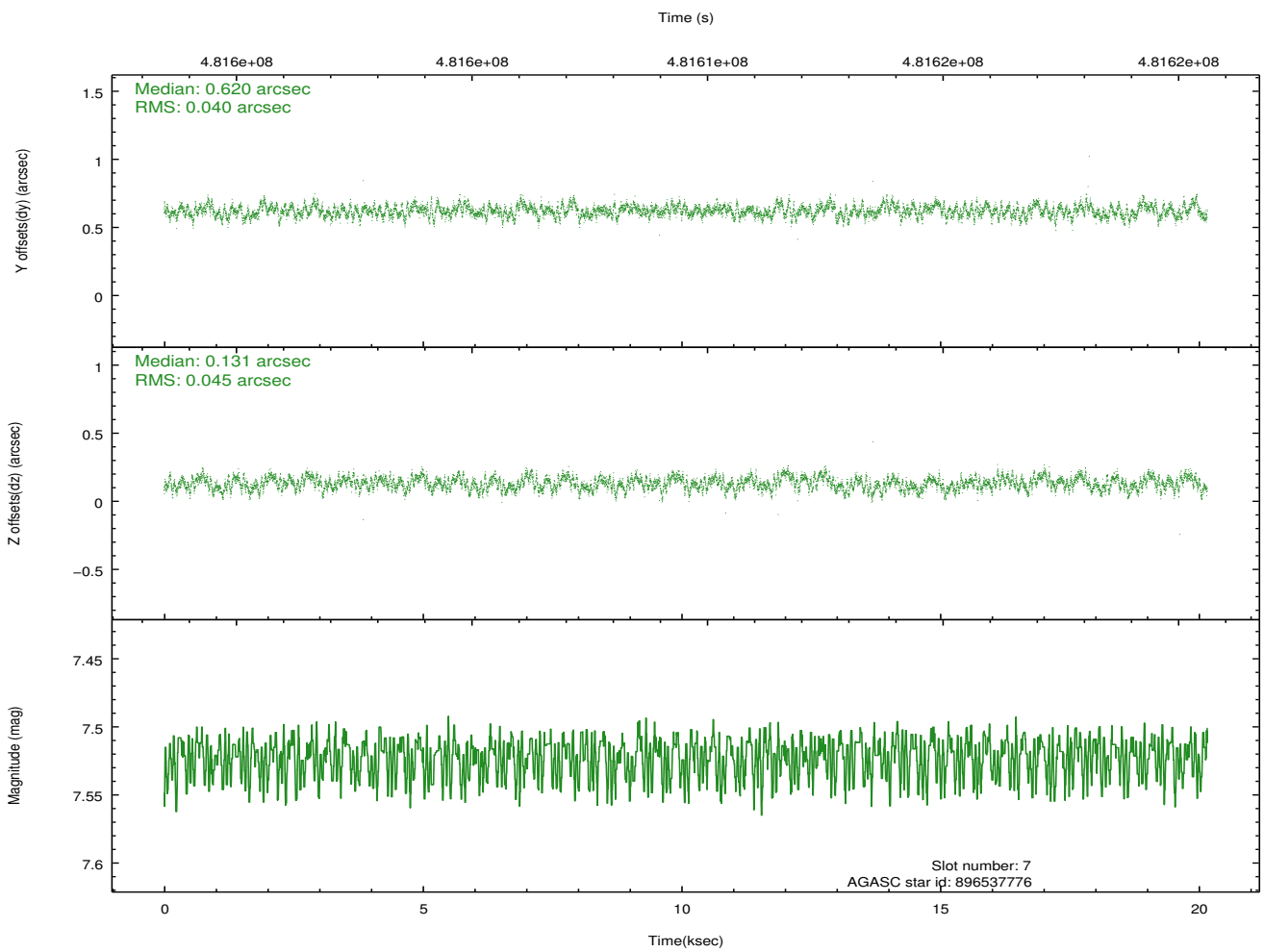
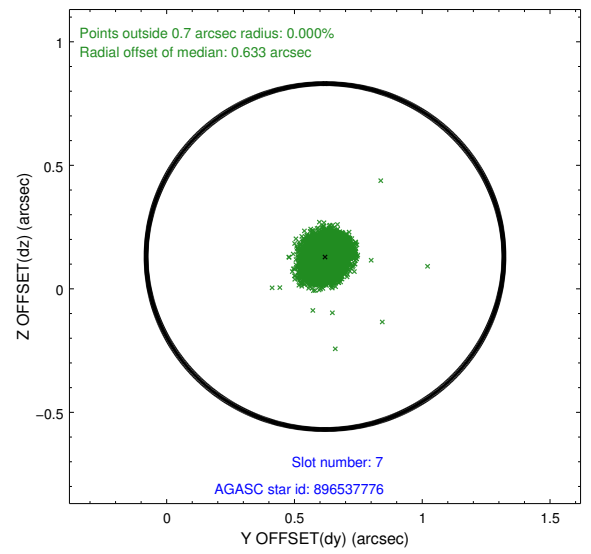
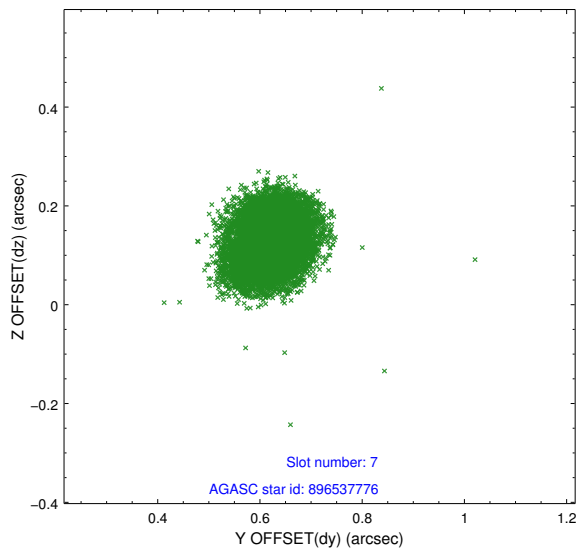
2.4.3 Slot 5



2.4.4 Slot 6

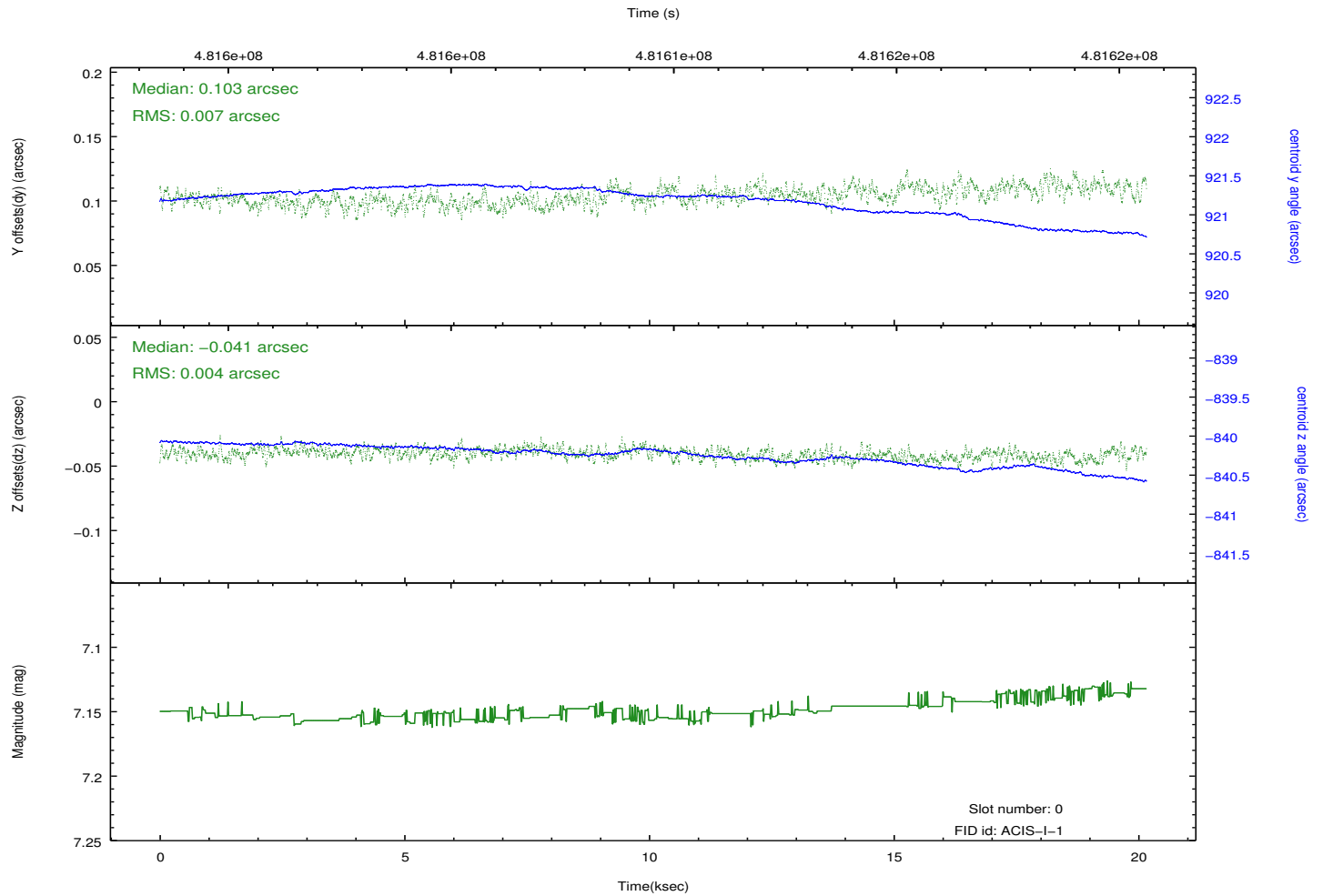
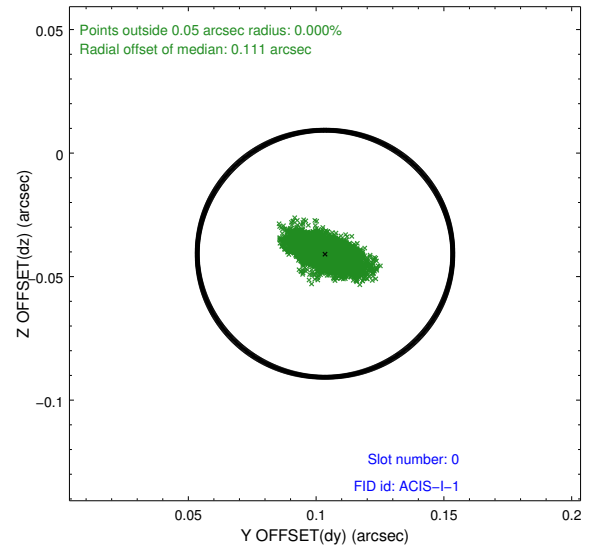
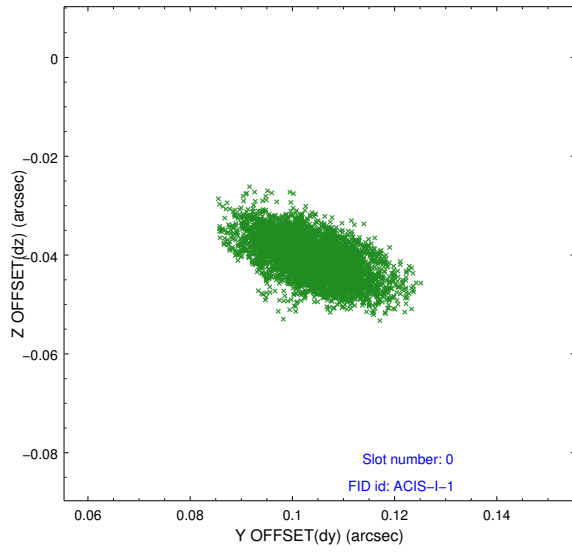


2.4.5 Slot 7

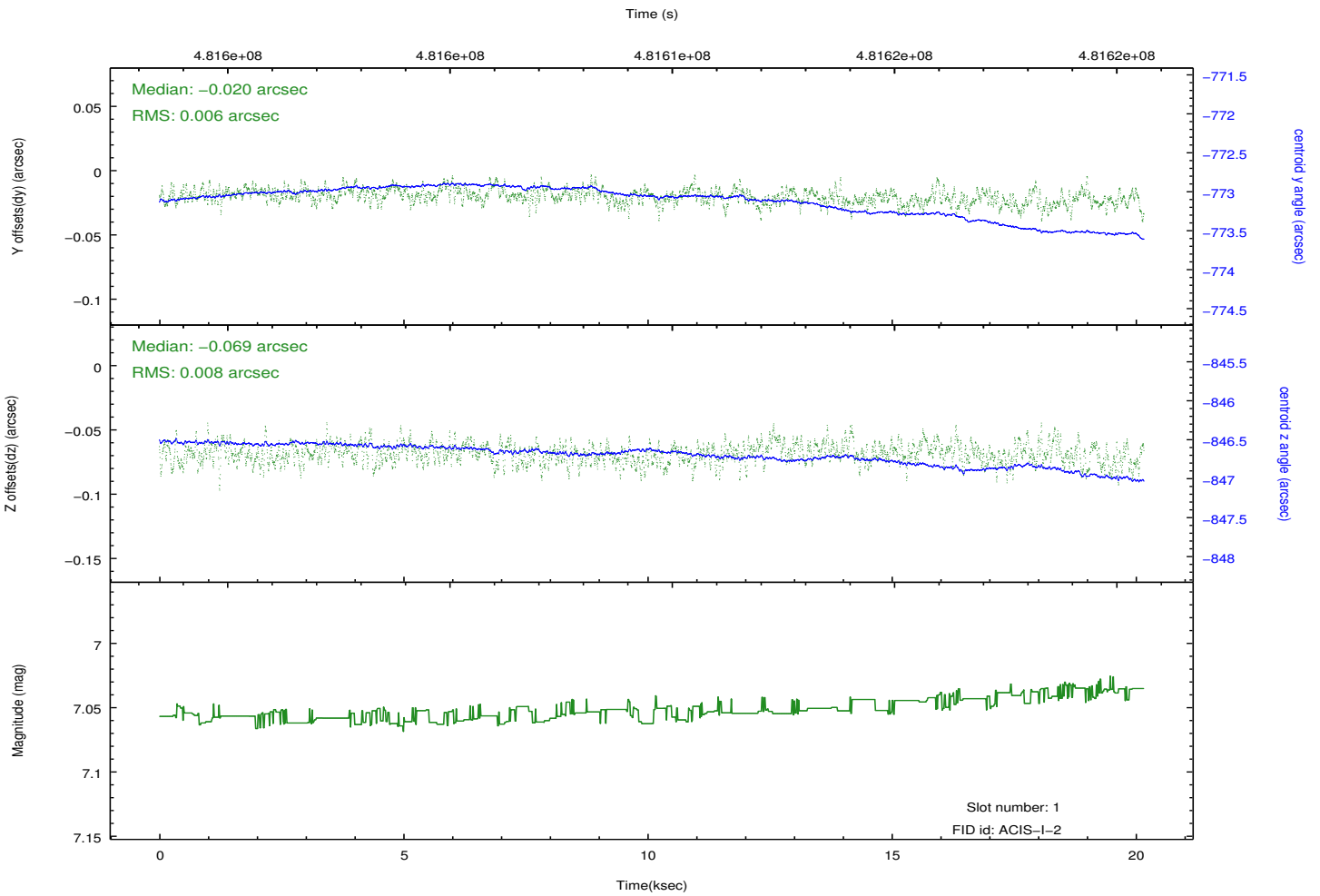
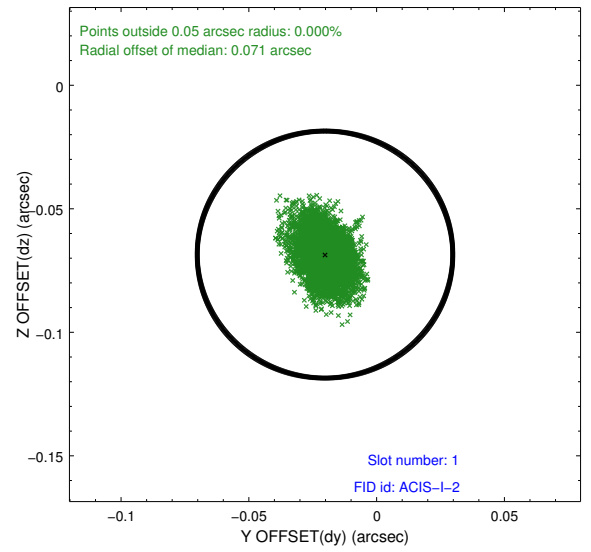
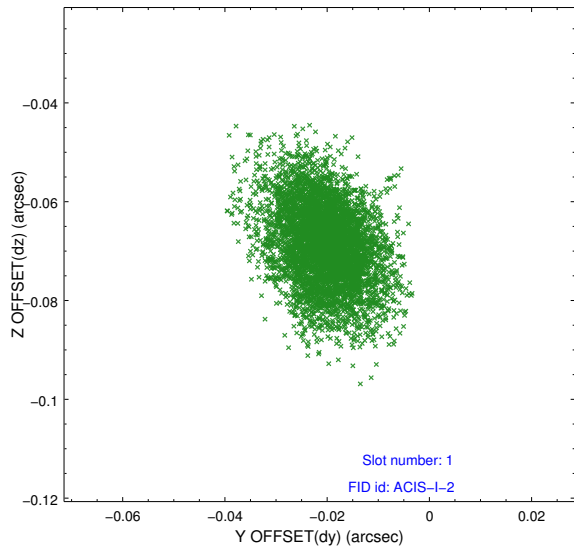


2.5 FID Slots

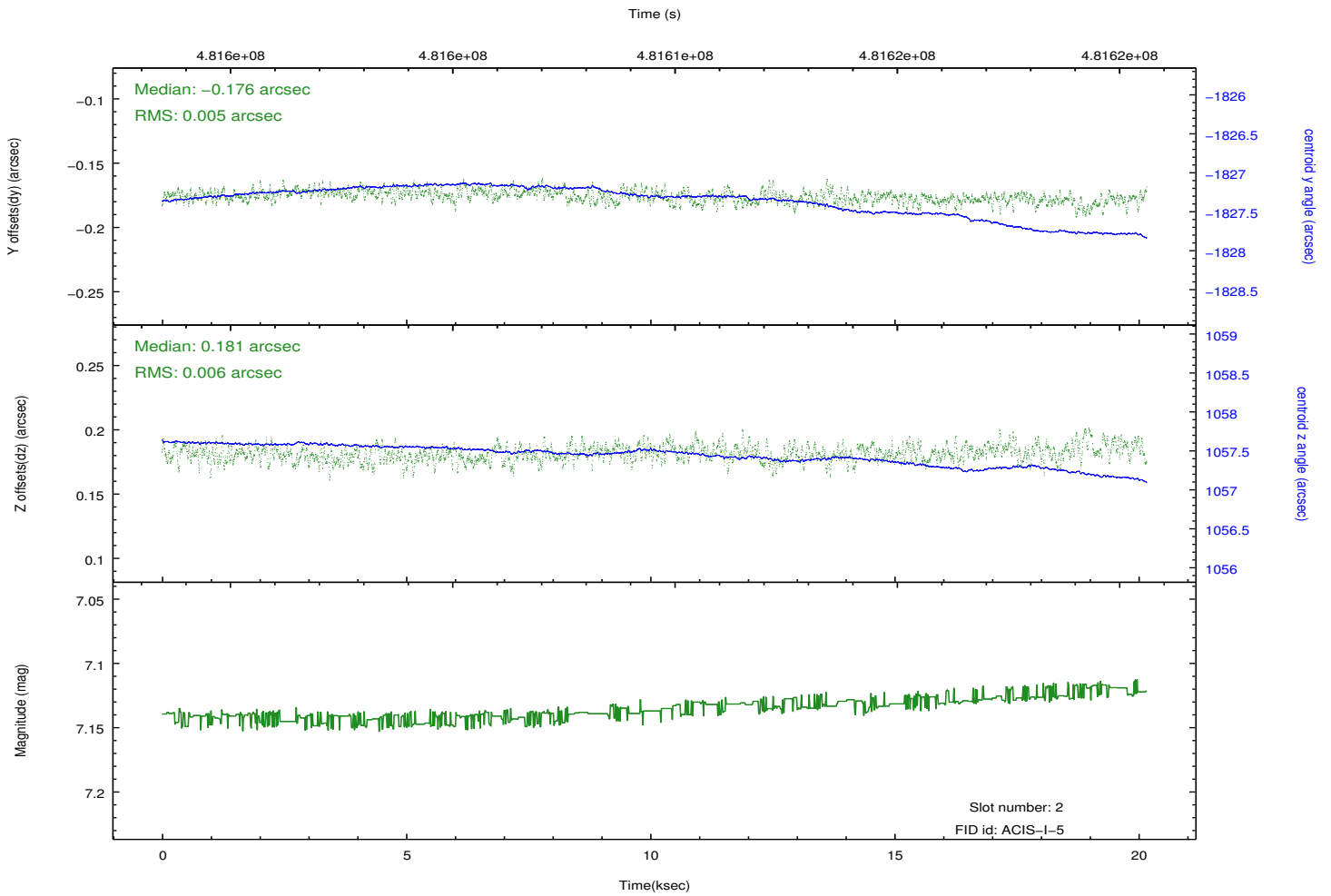
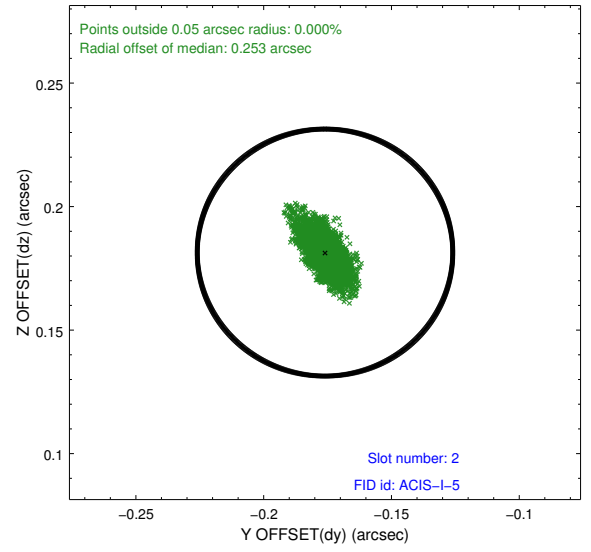
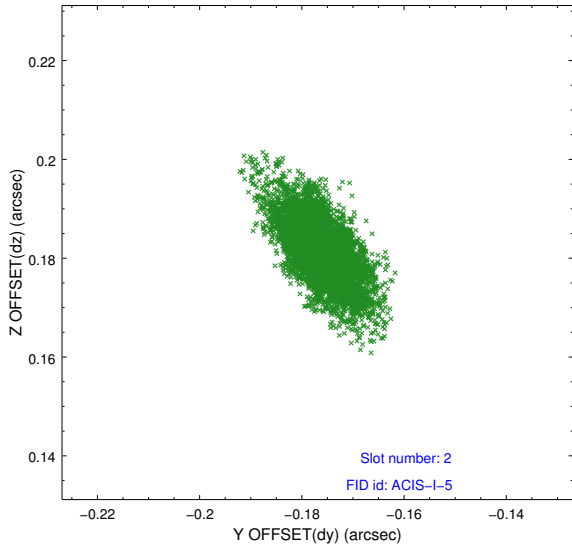
2.5.1 Slot 0



2.5.2 Slot 1



2.5.3 Slot 2



A Summary

A.1 Status

V&V Scientist	Beth Sundheim
V&V Date (YYYY-MM-DD)	2014.12.10
V&V Edition	1
V&V Disposition and Status	OK
V&V Charge Time	20.081701309085

A.2 Comments

Window preference met.

These data have been reprocessed with new aspect alignment calibration files that correct small mean offsets (up to 0.4 arcsecs) and improve overall astrometric accuracy. The new calibration was determined using data from the time period being reprocessed and was performed using cross-correlation of X-ray sources with radio and optical counterparts.