

# V&V Reference Report

## L2 ASCDS Version : 10.2.4

Observation 16071 - L2 Version 1  
Chandra X-Ray Center

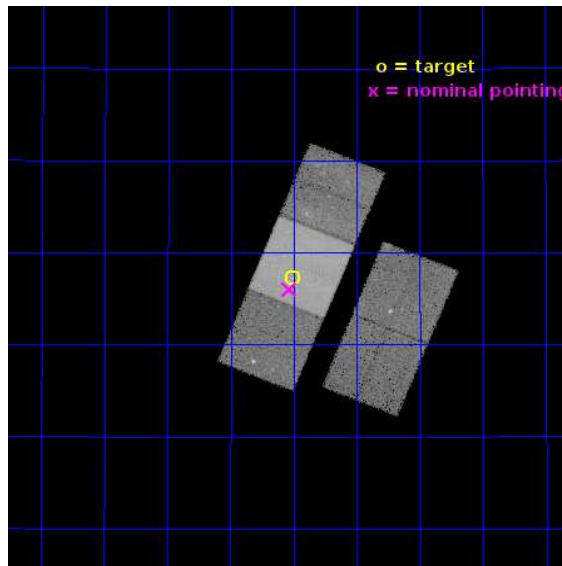
L2 Processing Date : Sep 5 2014

## Contents

<b>1</b>	<b>Front</b>	<b>2</b>
<b>2</b>	<b>OBI</b>	<b>3</b>
2.1	OBI . . . . .	3
2.1.1	Images . . . . .	3
2.1.2	Bias . . . . .	3
2.1.3	Parameters . . . . .	4
2.1.4	Events . . . . .	4
2.2	Compared Parameters . . . . .	5
2.3	Aspect . . . . .	6
2.4	Star Slots . . . . .	9
2.4.1	Slot 3 . . . . .	9
2.4.2	Slot 4 . . . . .	10
2.4.3	Slot 5 . . . . .	11
2.4.4	Slot 6 . . . . .	12
2.4.5	Slot 7 . . . . .	13
2.5	FID Slots . . . . .	14
2.5.1	Slot 0 . . . . .	14
2.5.2	Slot 1 . . . . .	15
2.5.3	Slot 2 . . . . .	16
<b>A</b>	<b>Summary</b>	<b>17</b>
A.1	Status . . . . .	17
A.2	Comments . . . . .	17

# 1 Front

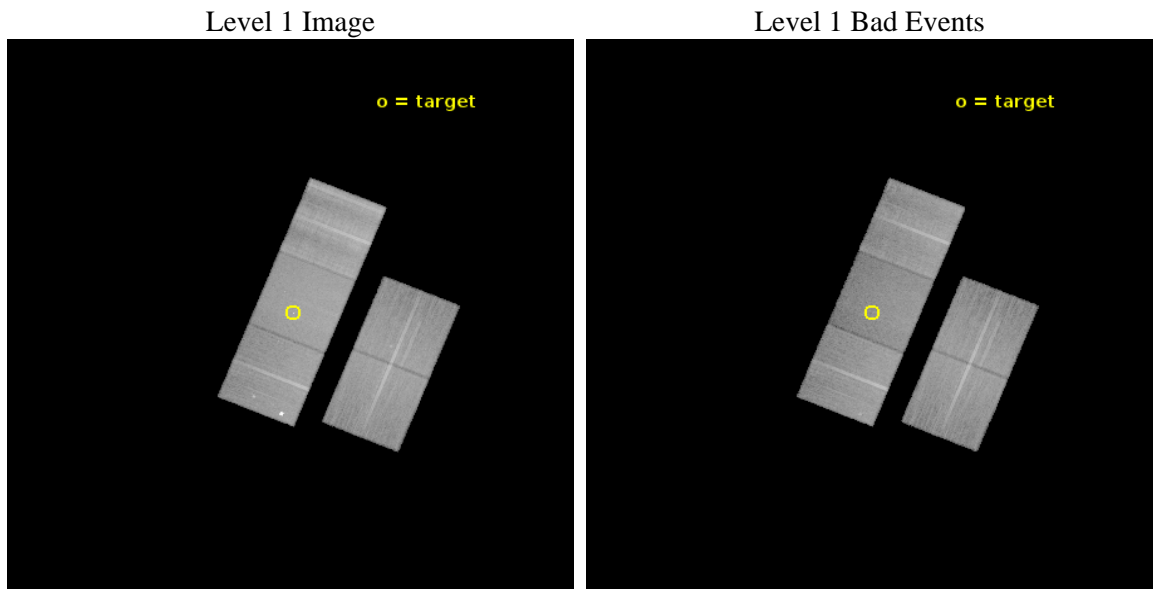
seq_num	702964	Sequence number
obs_id	16071	Observation id
title	Deep Chandra Imaging of Two Youngest Radio Sources	Proposal title
observer	Dr Aneta Siemiginowska	Principal investigator
object	OQ280	Source name
dtcycle	0	&#160
cycle	P	events from which exps? Prim/Second/Both
ra_targ	211.75125	Observer's specified target RA [deg]
dec_targ	28.453889	Observer's specified target Dec [deg]
ra_nom	211.75849428448	Nominal RA [deg]
dec_nom	28.433930364347	Nominal Dec [deg]
roll_nom	292.15317563171	Nominal Roll [deg]
revision	1	Processing version of data
ontime	35061.000269651	Sum of GTIs [s]
livetime	34602.902489596	Livetime [s]
ontime2	35057.85931921	Sum of GTIs [s]
ontime3	35057.859279394	Sum of GTIs [s]
ontime6	35061.000269651	Sum of GTIs [s]
ontime7	35061.000269651	Sum of GTIs [s]
ontime8	35054.718259275	Sum of GTIs [s]
l2events	224342	Number of level 2 events



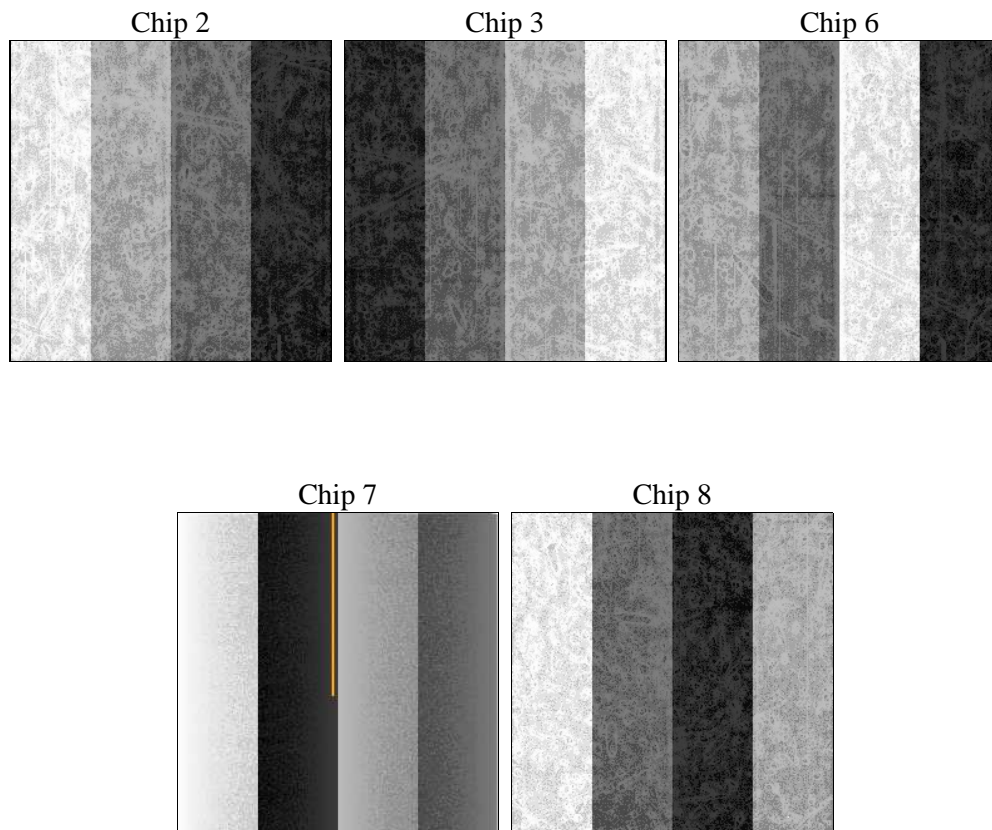
## 2 OBI

### 2.1 OBI

#### 2.1.1 Images



#### 2.1.2 Bias



### 2.1.3 Parameters

obi_num	0	Obi number	sched_exp_time	35000.000000	[s] Scheduled observation exposure time
ascdsver	10.2.4	Processing system revision	ontime	35061.000269651	Sum of GTIs [s]
caldsver	4.6.3	&#160	ontime2	35057.85931921	Sum of GTIs [s]
date	2014-09-05T11:41:44	Date and time of file creation	ontime3	35057.859279394	Sum of GTIs [s]
revision	1	Processing version of data	ontime6	35061.000269651	Sum of GTIs [s]
			ontime7	35061.000269651	Sum of GTIs [s]
			ontime8	35054.718259275	Sum of GTIs [s]
			l1events	1301056	Number of level 1 events

### 2.1.4 Events

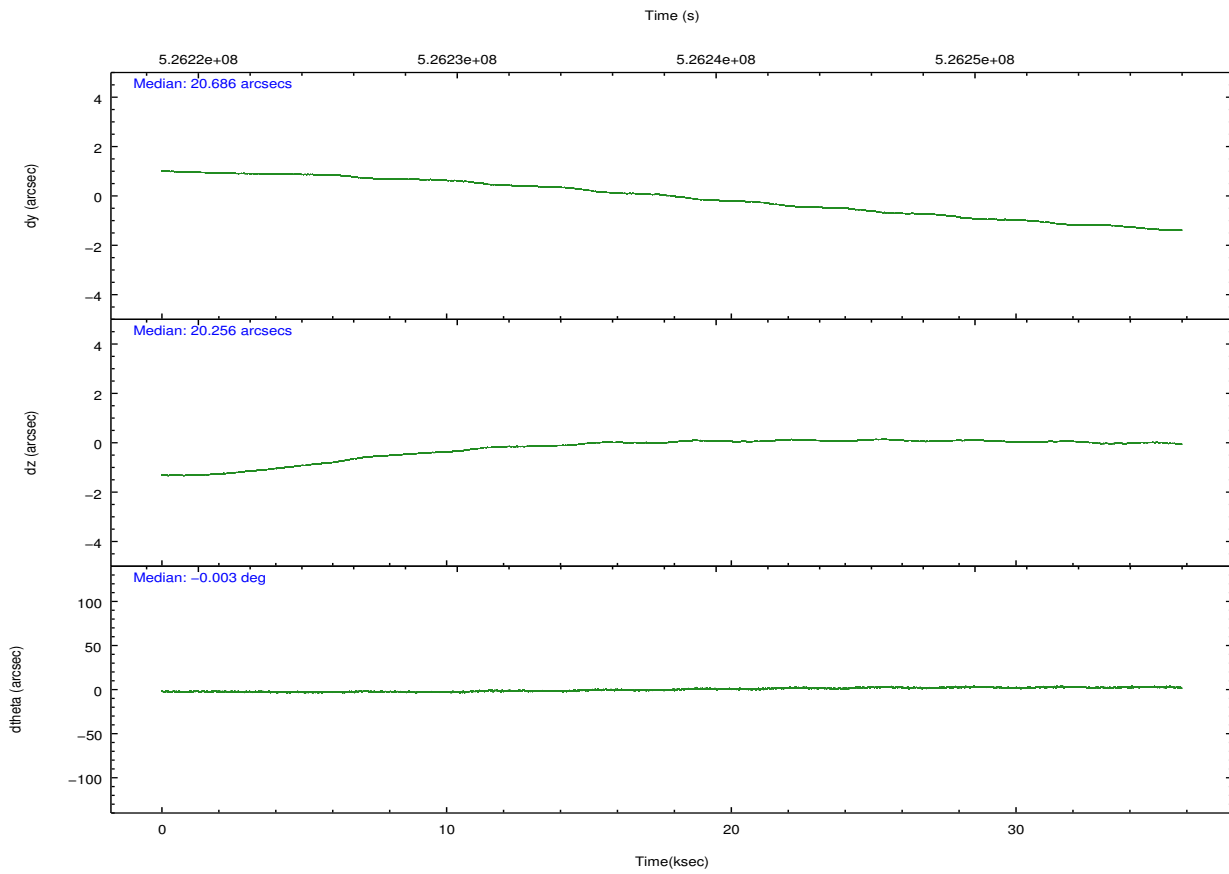
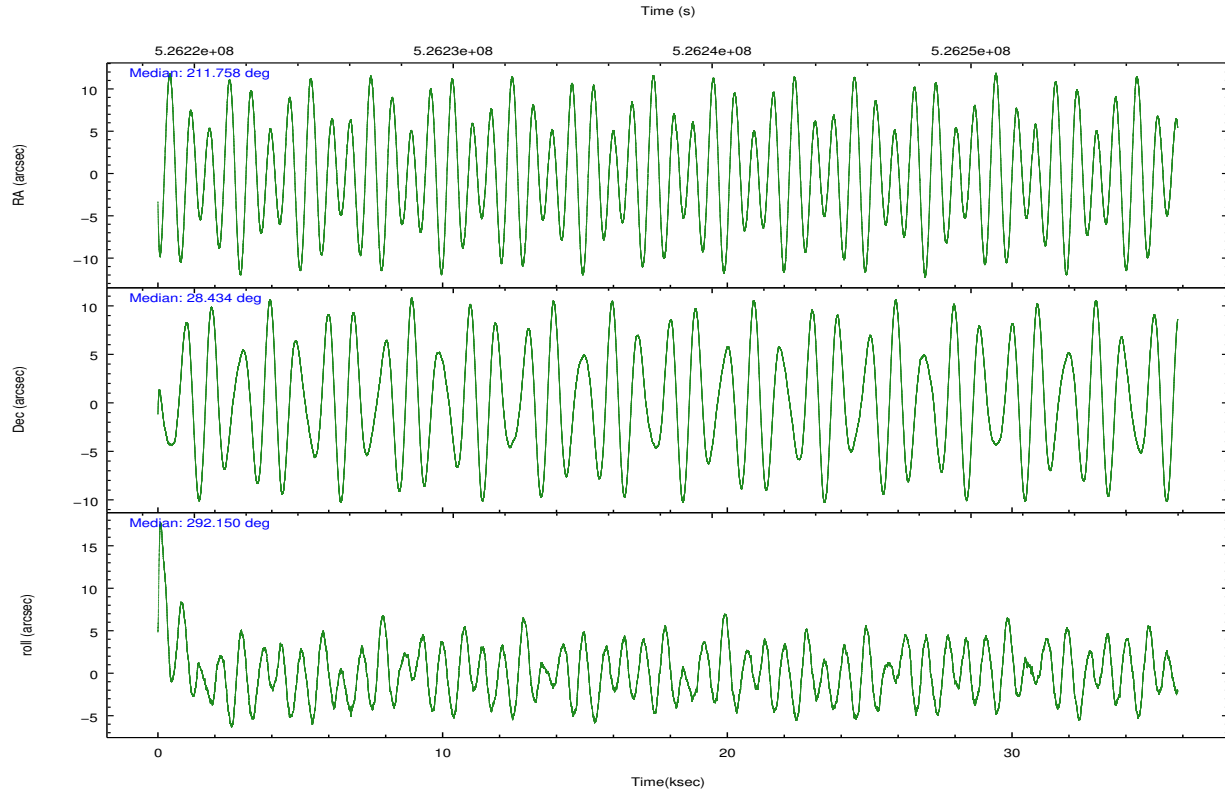
	ccd 2	ccd 3	ccd 6	ccd 7	ccd 8
level 1 events	230929	223756	250523	276227	319621
rejected events	204928	197735	210421	146915	214255
rejected %	88%	88%	83%	53%	67%

	ccd 2	ccd 3	ccd 6	ccd 7	ccd 8
grade 0 events	9923	10469	11073	12623	35183
	4%	4%	4%	4%	11%
grade 1 events	107	139	125	395	307
	0%	0%	0%	0%	0%
grade 2 events	6110	5361	17433	28452	23641
	2%	2%	6%	10%	7%
grade 3 events	2553	2606	2809	10976	11625
	1%	1%	1%	3%	3%
grade 4 events	2610	2638	2584	10817	10983
	1%	1%	1%	3%	3%
grade 5 events	7828	9793	9802	26955	14584
	3%	4%	3%	9%	4%
grade 6 events	4806	4947	6206	66453	23944
	2%	2%	2%	24%	7%
grade 7 events	196992	187803	200491	119556	199354
	85%	83%	80%	43%	62%

## 2.2 Compared Parameters

Parameter	Planned	Actual	Parameter	Planned	Actual
Instrument	ACIS	ACIS	Obspar format version number	7	7
Detector	ACIS-23678	ACIS-23678	Obspar file type	PREDICTED	ACTUAL
Grating	NONE	NONE	Obspar update status	NONE	UPDATED
Data mode	VFAINT	VFAINT	CCD I0 on	N	N
Observation mode	POINTING	POINTING	CCD I1 on	N	N
[deg] Pointing RA	211.733594	211.7584942844772	CCD I2 on	O1	Y
[deg] Pointing Dec	28.450483	28.43393036434718	CCD I3 on	O2	Y
[deg] Pointing Roll	292.008410	292.1531756317093	CCD S0 on	N	N
[mm] SIM focus pos	-0.684267	-0.6828225247311905	CCD S1 on	N	N
[mm] SIM defocus	0	0.001444936568705701	CCD S2 on	Y	Y
[mm] SIM translation stage pos	-190.132523	-190.1400660498719	CCD S3 on	Y	Y
[mm] SIM translation stage offset	0	0.00754346686406393	CCD S4 on	Y	Y
[s] Observation start time (MET)	526221203.184000	526219226.33241	CCD S5 on	N	N
Observation start date	2014-09-04T12:32:16	2014-09-04T12:00:26	Number of optional ACIS chips dropped	0	0
[s] Observation end time (MET)	526256203.184000	526257136.98452	On-chip summing requested	N	N
Observation end date	2014-09-04T22:15:36	2014-09-04T22:32:16	Subarray requested	NONE	NONE
Read mode	TIMED	TIMED	Alternating exposures requested	N	N
			[s] Primary exposure time	0.000000	3.1

## 2.3 Aspect

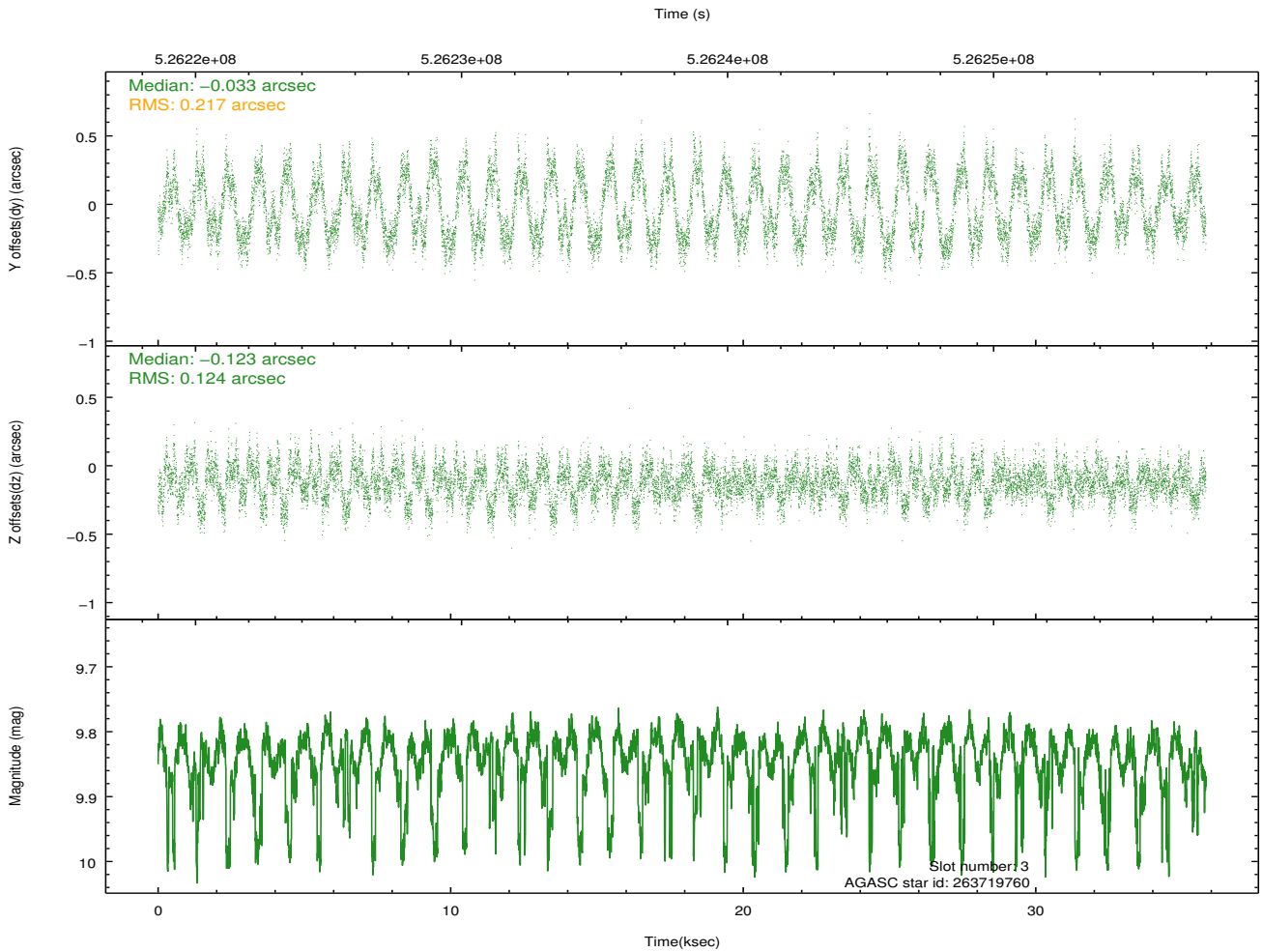
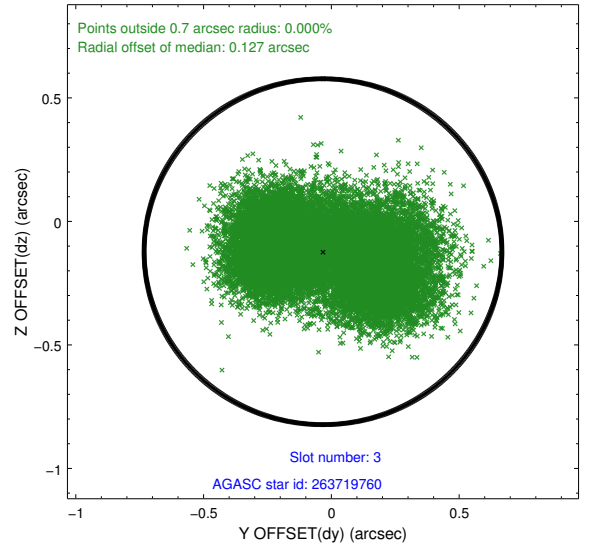
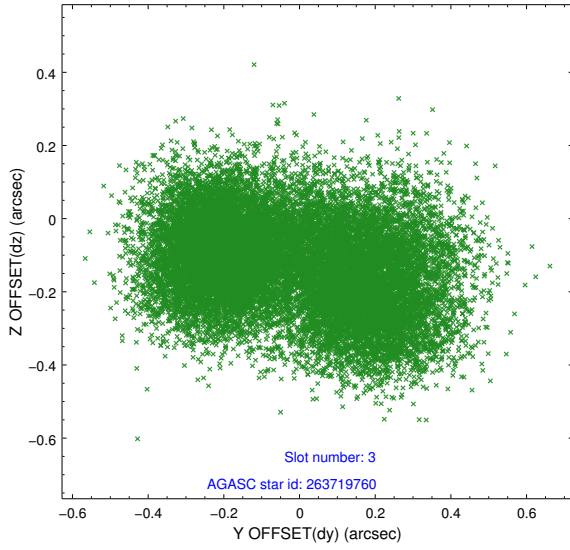


### Slot Statistics

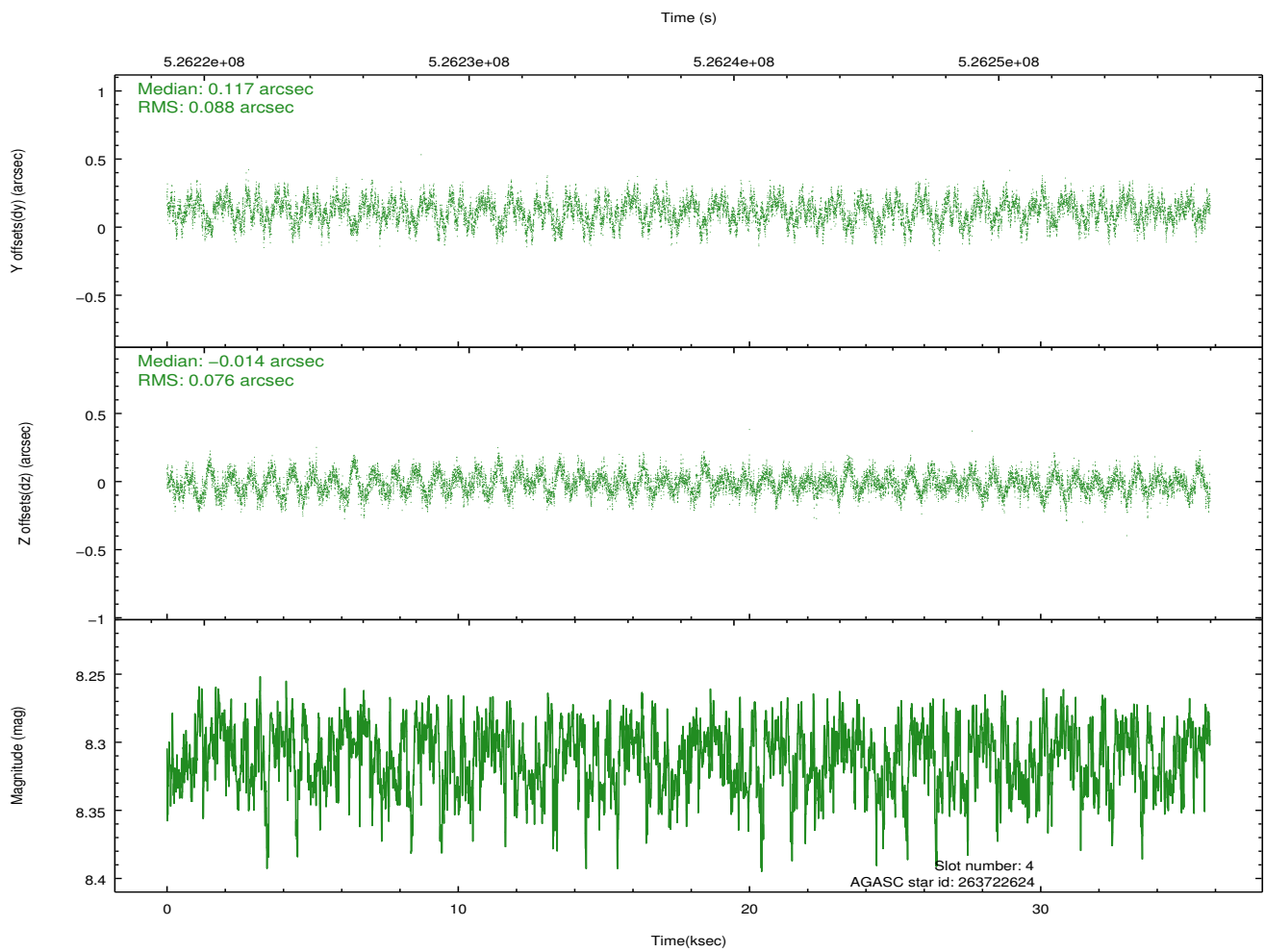
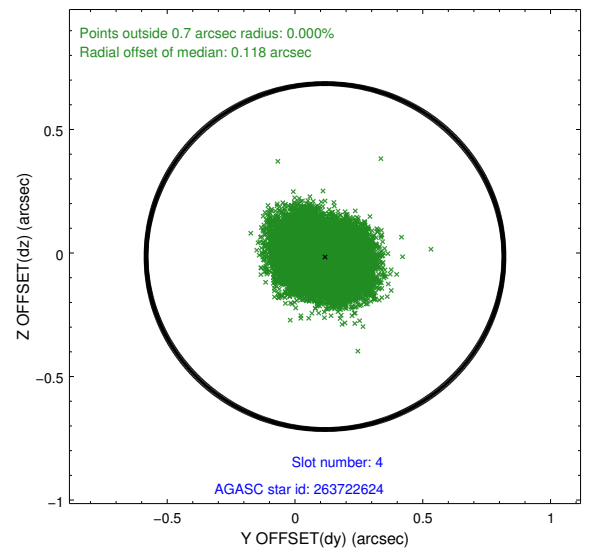
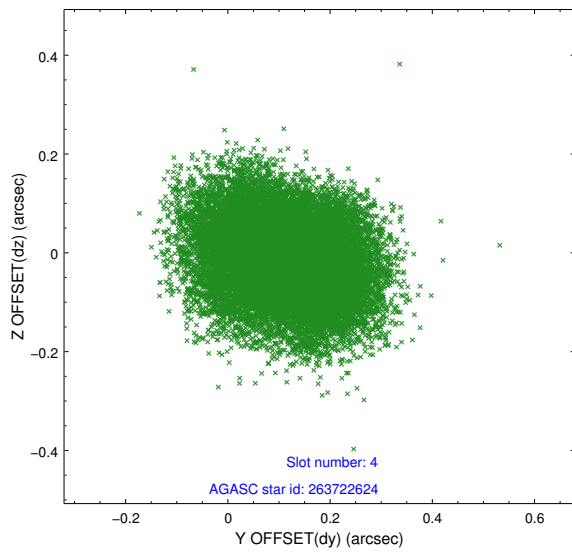
slot	status	id	mag	n_pts	med_dy	med_dz	dr1	dr2	ra	dec	mean_y	mean_z
0	FID	ACIS-S-2	6.93	8737	-0.141	-0.072	0.009	0.016	0.000000	0.000000	-773.92	-1741.58
1	FID	ACIS-S-4	7.02	8737	0.167	0.084	0.012	0.023	0.000000	0.000000	2139.70	166.95
2	FID	ACIS-S-6	7.15	8737	-0.055	-0.005	0.015	0.022	0.000000	0.000000	388.25	804.34
3	GUIDE	263719760	9.84	17439	-0.033	-0.123	0.273	0.410	212.011386	28.100428	1497.78	346.13
4	GUIDE	263722624	8.31	17468	0.117	-0.014	0.127	0.197	211.605883	27.726480	2263.63	-1353.89
5	GUIDE	263725680	9.62	17455	0.058	0.013	0.175	0.263	211.602127	28.885667	-1607.45	203.02
6	GUIDE	263848664	9.52	17445	-0.171	0.083	0.181	0.268	212.111691	29.161559	-1929.90	2062.52
7	GUIDE	263850792	9.18	17460	0.025	0.038	0.151	0.234	212.123721	28.982654	-1318.34	1855.39

## 2.4 Star Slots

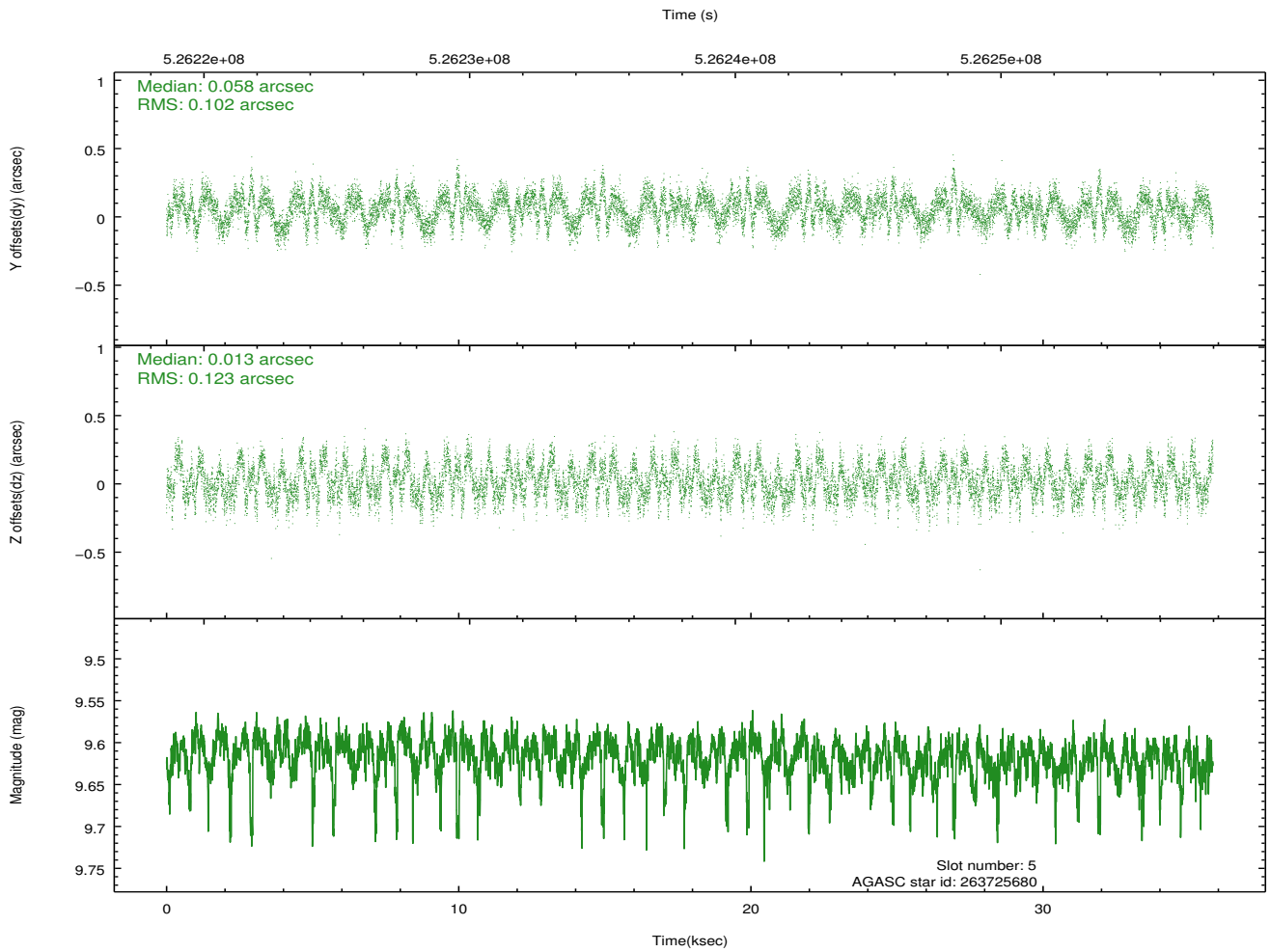
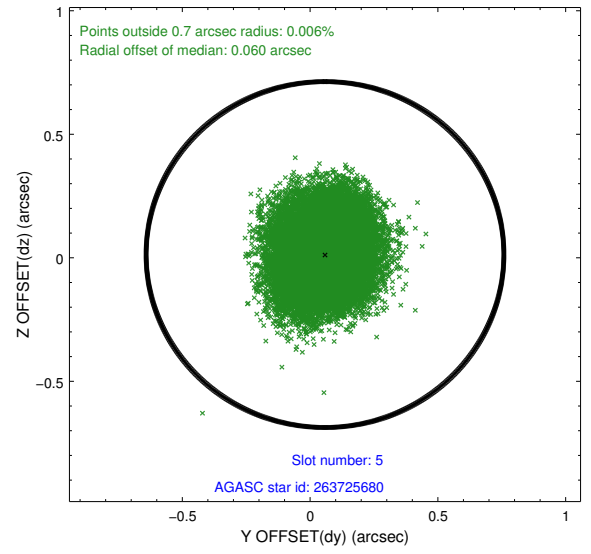
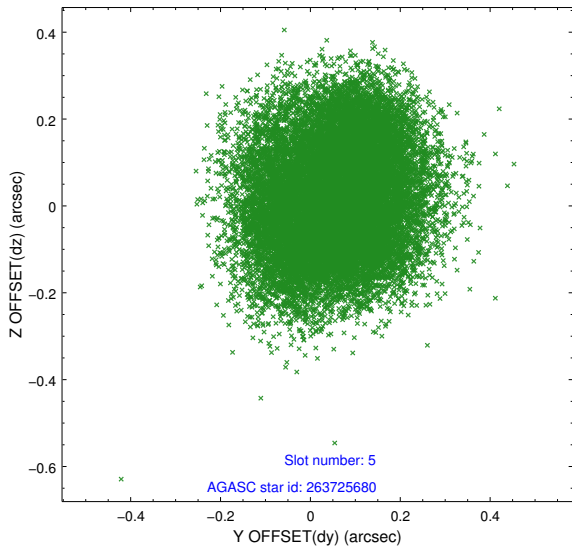
### 2.4.1 Slot 3



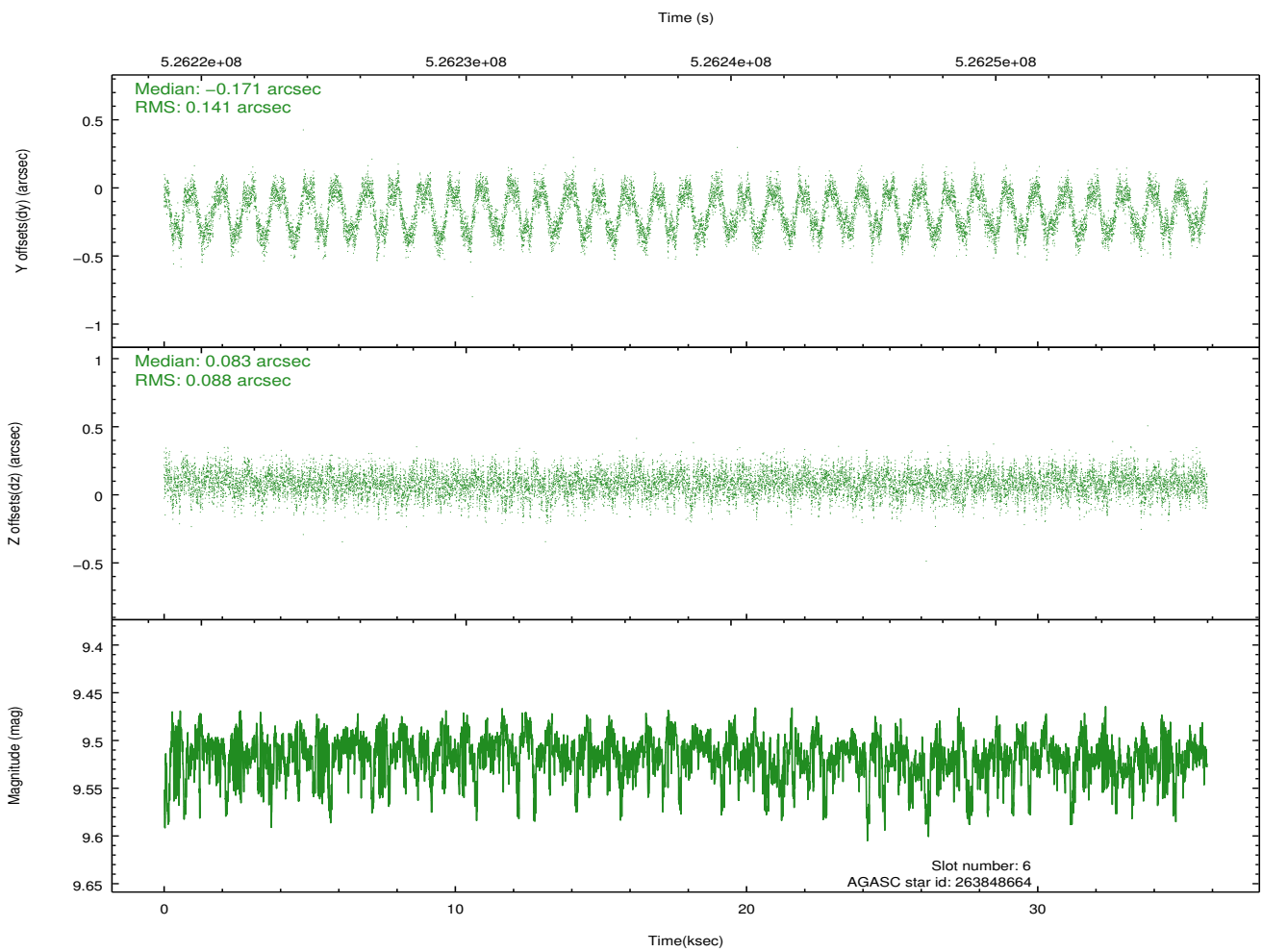
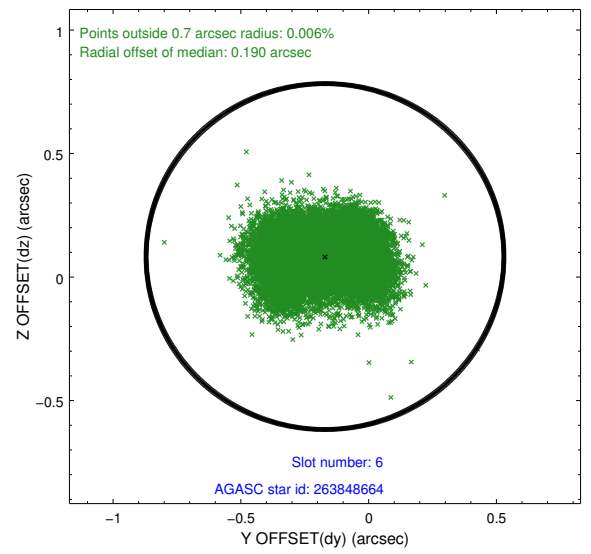
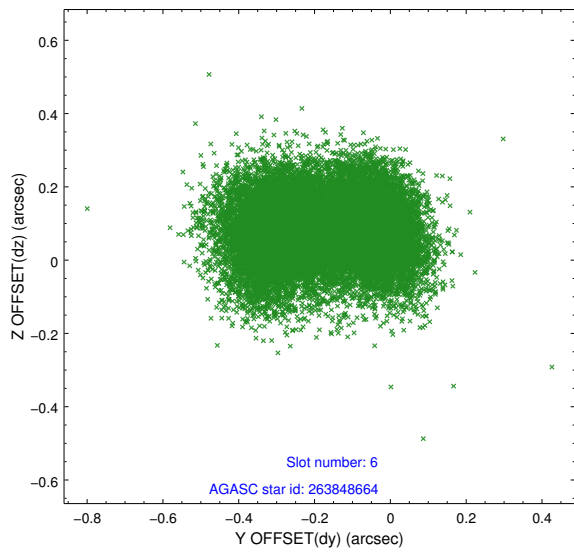
## 2.4.2 Slot 4



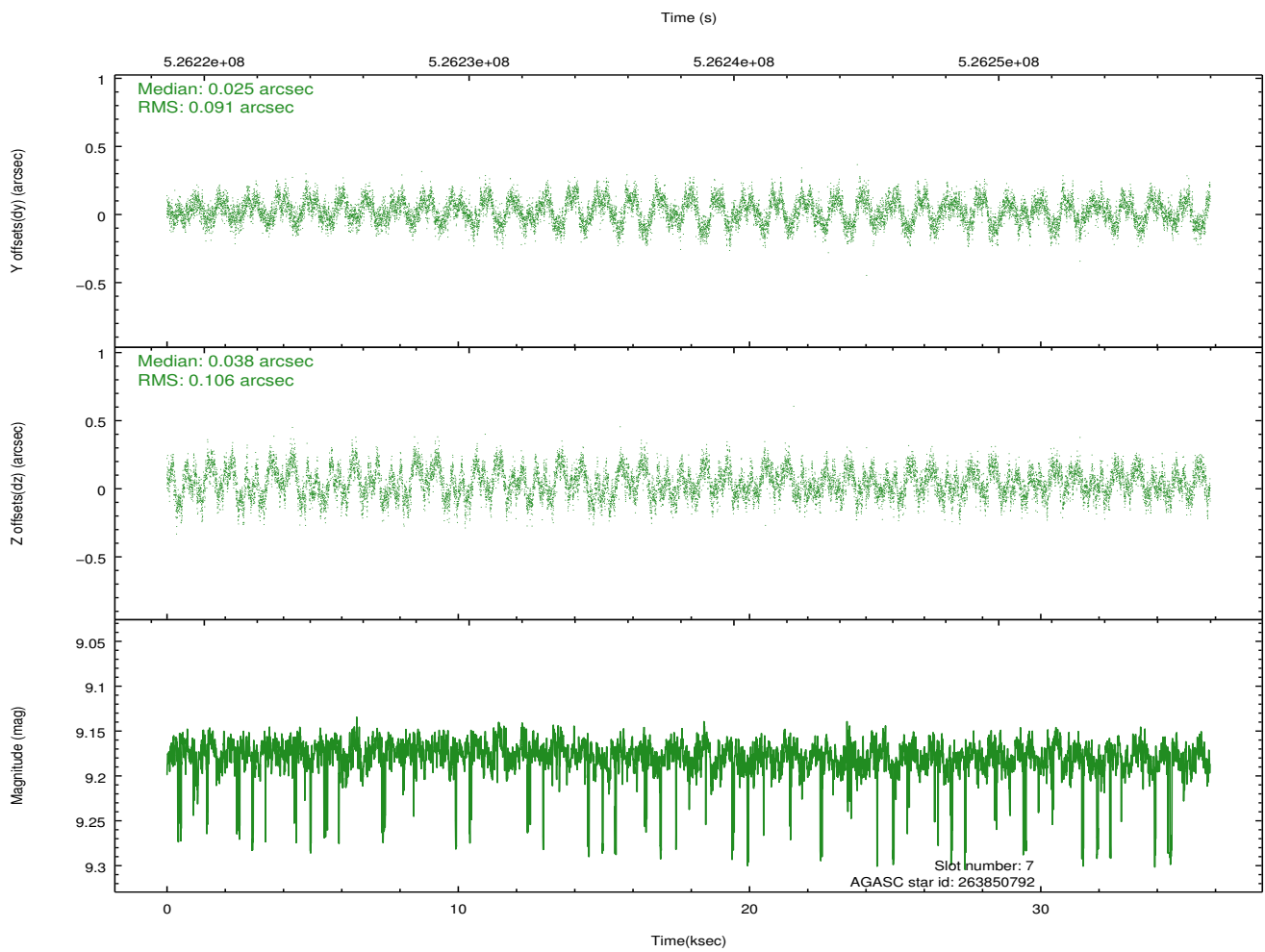
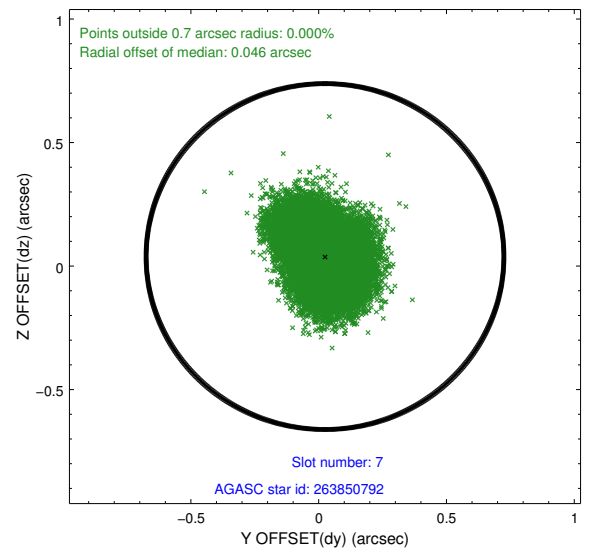
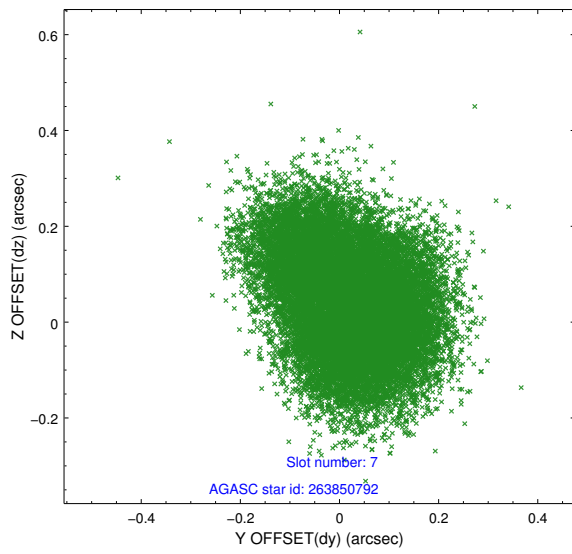
### 2.4.3 Slot 5



## 2.4.4 Slot 6

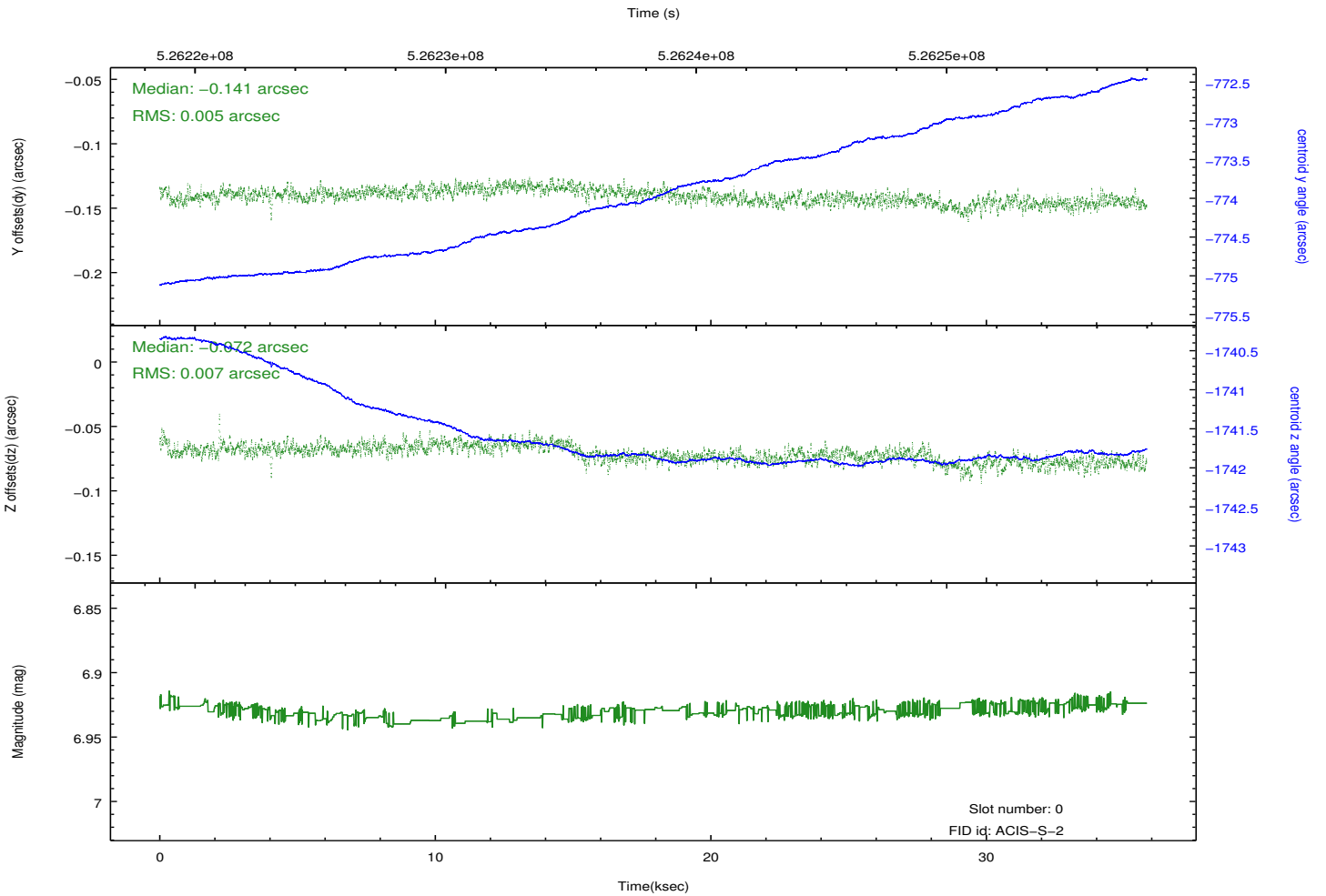
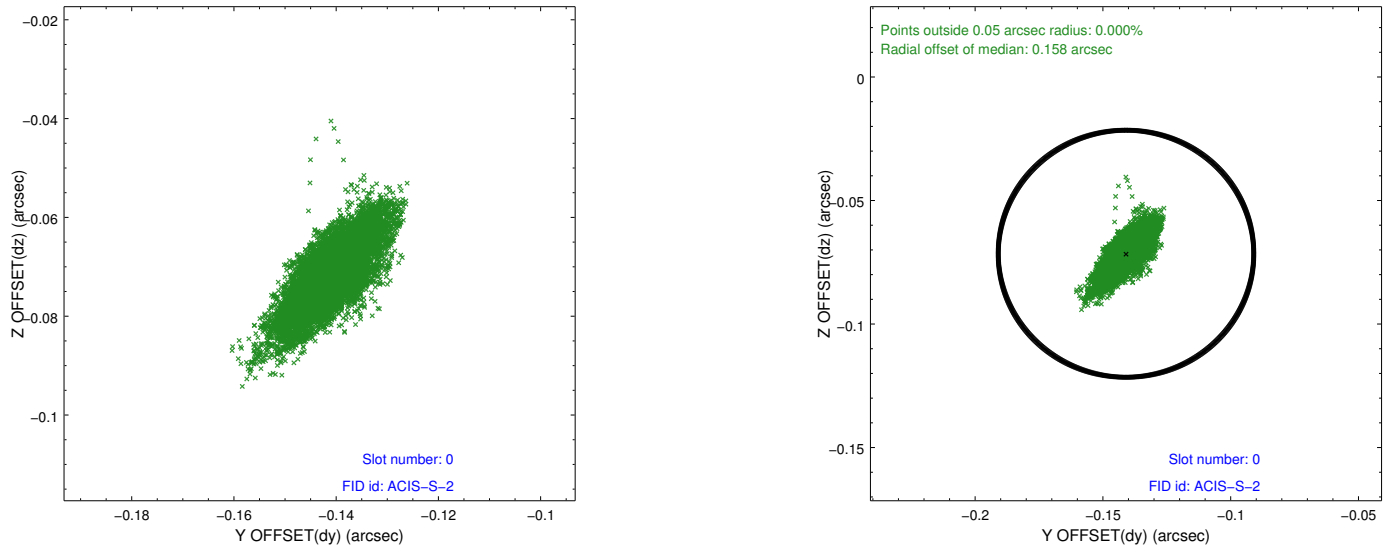


## 2.4.5 Slot 7

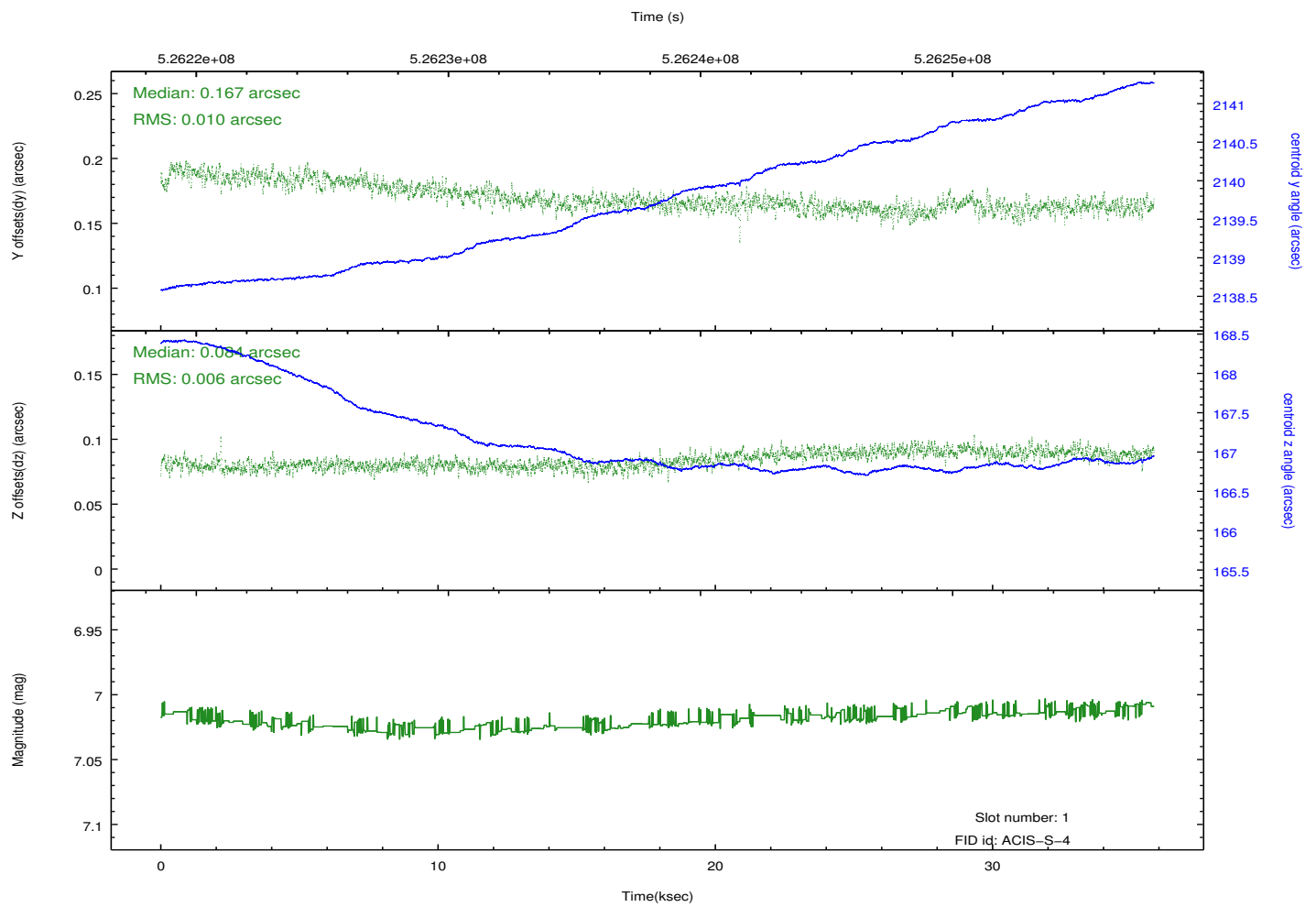
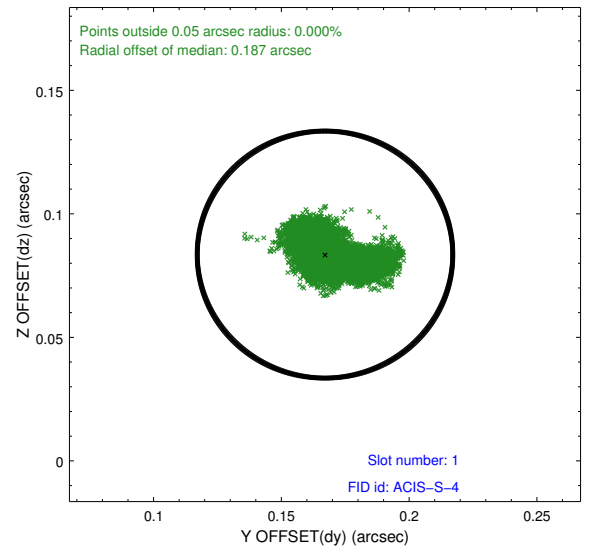
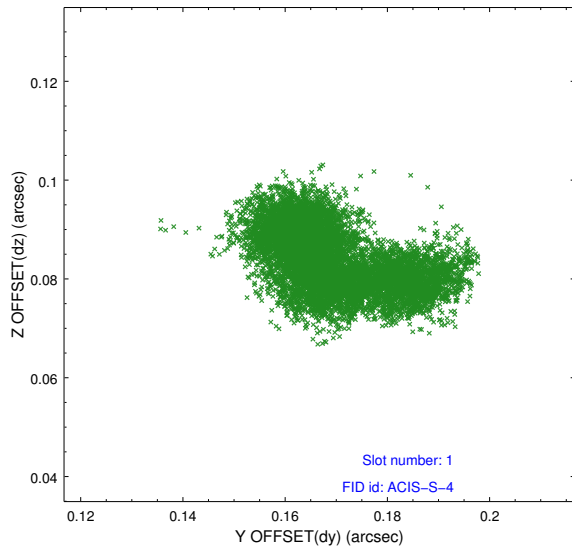


## 2.5 FID Slots

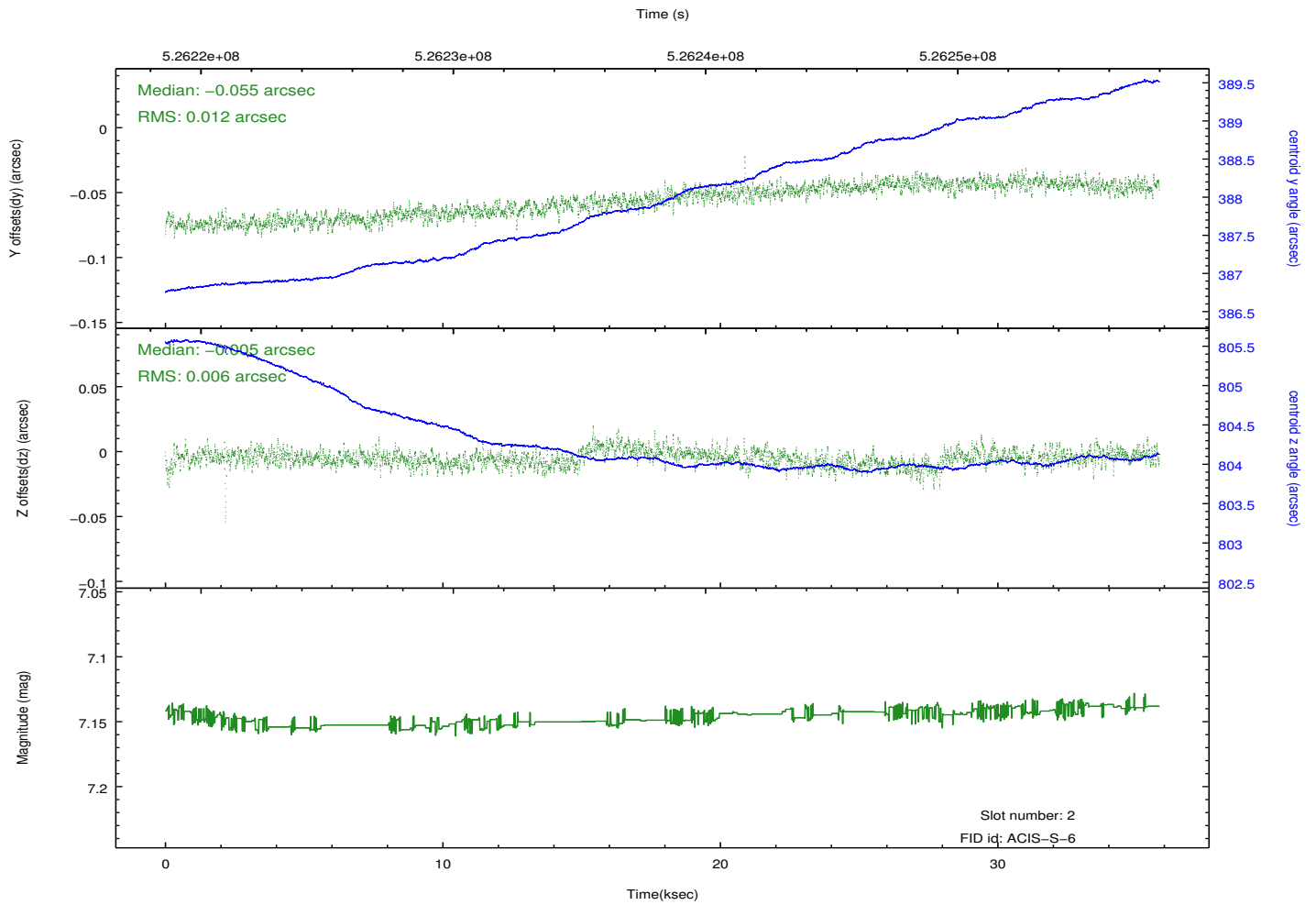
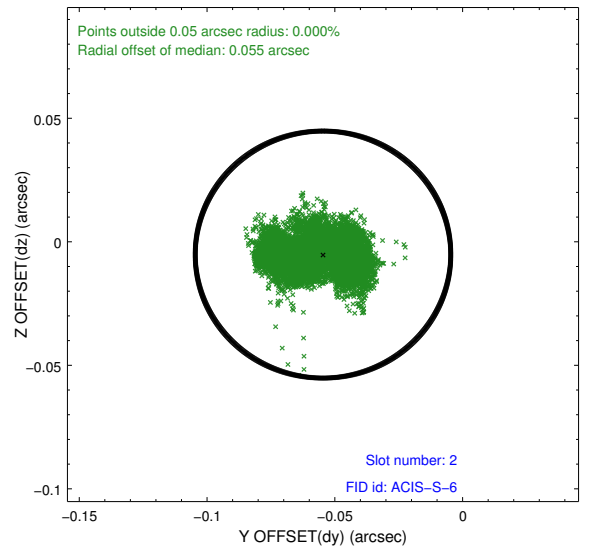
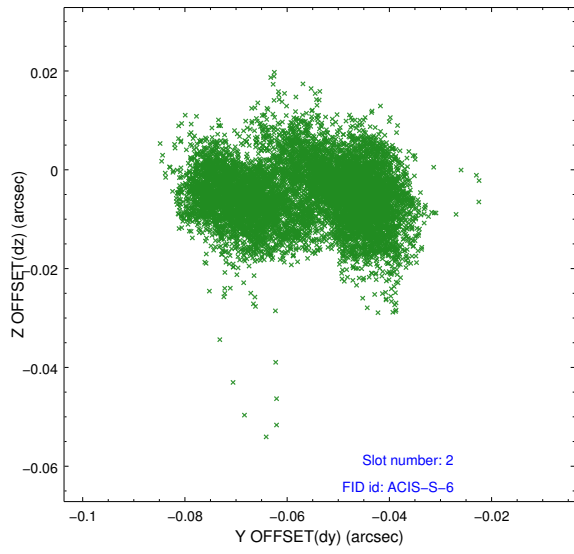
### 2.5.1 Slot 0



## 2.5.2 Slot 1



### 2.5.3 Slot 2



## A Summary

### A.1 Status

V&V Scientist	Jen Lauer
V&V Date (YYYY-MM-DD)	2014.09.05
V&V Edition	1
V&V Disposition and Status	OK
V&V Charge Time	35.061000269651

### A.2 Comments