

# V&V Reference Report

## L2 ASCDS Version : 8.4.5

Observation 1611 - L2 Version 3  
Chandra X-Ray Center

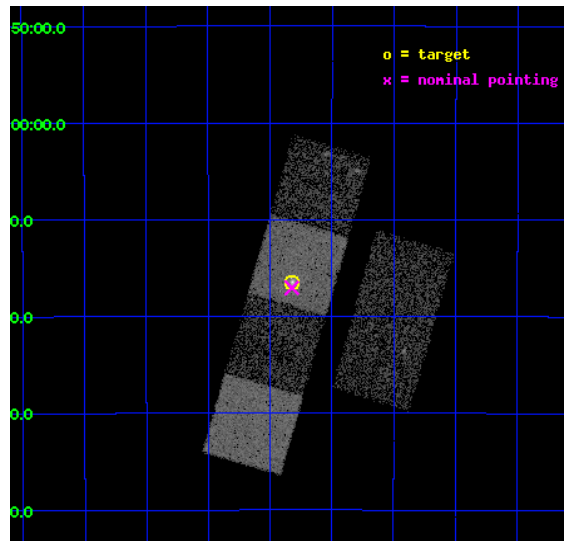
L2 Processing Date : Sep 7 2012

## Contents

<b>1</b>	<b>Front</b>	<b>2</b>
<b>2</b>	<b>OBI</b>	<b>3</b>
2.1	OBI . . . . .	3
2.1.1	Images . . . . .	3
2.1.2	Bias . . . . .	3
2.1.3	Parameters . . . . .	4
2.1.4	Events . . . . .	4
2.2	Compared Parameters . . . . .	5
2.3	Aspect . . . . .	6
2.4	Star Slots . . . . .	9
2.4.1	Slot 4 . . . . .	9
2.4.2	Slot 5 . . . . .	10
2.4.3	Slot 6 . . . . .	11
2.4.4	Slot 7 . . . . .	12
2.5	FID Slots . . . . .	13
2.5.1	Slot 0 . . . . .	13
2.5.2	Slot 1 . . . . .	14
2.5.3	Slot 2 . . . . .	15
<b>A</b>	<b>Summary</b>	<b>16</b>
A.1	Status . . . . .	16
A.2	Comments . . . . .	16

# 1 Front

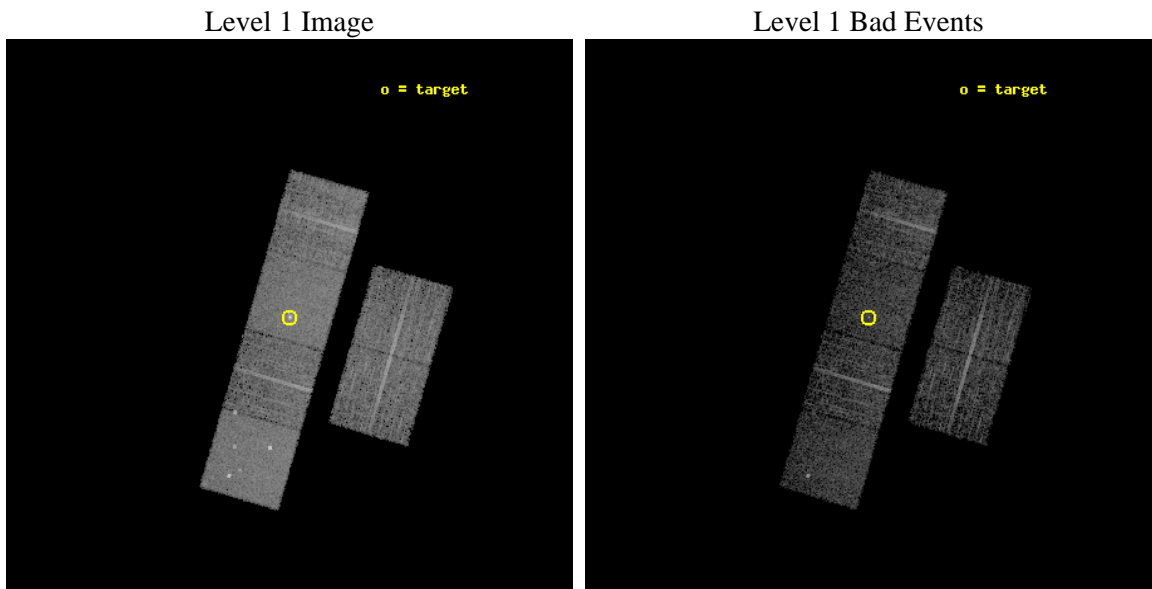
seq_num	700227	Sequence number
obs_id	1611	Observation id
title	STUDIES OF RADIO JETS AND THE NARROW LINE REGIONS OF ACTIVE GALAXIES	&#160
observer	Professor Andrew Wilson	Principal investigator
object	NGC1097	Source name
dtcycle	0	&#160
cycle	P	events from which exps? Prim/Second/Both
ra_targ	41.579583	Observer's specified target RA [deg]
dec_targ	-30.274444	Observer's specified target Dec [deg]
ra_nom	41.580801274294	Nominal RA [deg]
dec_nom	-30.284170734162	Nominal Dec [deg]
roll_nom	286.13306869813	Nominal Roll [deg]
revision	3	Processing version of data
ontime	5407.9401552975	Sum of GTIs [s]
livetime	5339.4615607805	Livetime [s]
ontime2	5407.9811953008	Sum of GTIs [s]
ontime3	5407.8170353025	Sum of GTIs [s]
ontime5	5407.8991152942	Sum of GTIs [s]
ontime6	5407.8580753058	Sum of GTIs [s]
ontime7	5407.9401552975	Sum of GTIs [s]
ontime8	5407.7759952992	Sum of GTIs [s]
l2events	52258	Number of level 2 events



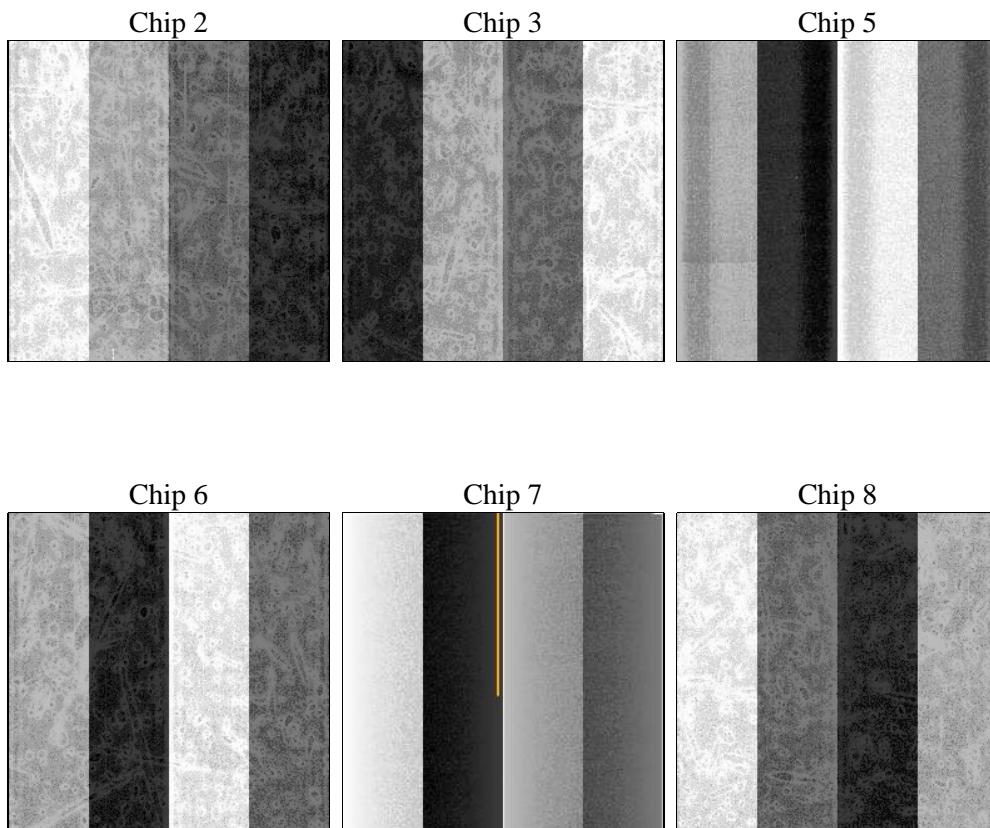
## 2 OBI

### 2.1 OBI

#### 2.1.1 Images



#### 2.1.2 Bias



### 2.1.3 Parameters

obi_num	0	Obi number	sched_exp_time	5468.926000	[s] Scheduled observation exposure time
ascdsver	8.4.5	Processing system revision	ontime	5407.9401552975	Sum of GTIs [s]
caldbver	4.5.1.1	&#160	ontime2	5407.9811953008	Sum of GTIs [s]
date	2012-09-07T04:44:44	Date and time of file creation	ontime3	5407.8170353025	Sum of GTIs [s]
revision	3	Processing version of data	ontime5	5407.8991152942	Sum of GTIs [s]
			ontime6	5407.8580753058	Sum of GTIs [s]
			ontime7	5407.9401552975	Sum of GTIs [s]
			ontime8	5407.7759952992	Sum of GTIs [s]
			l1events	227627	Number of level 1 events

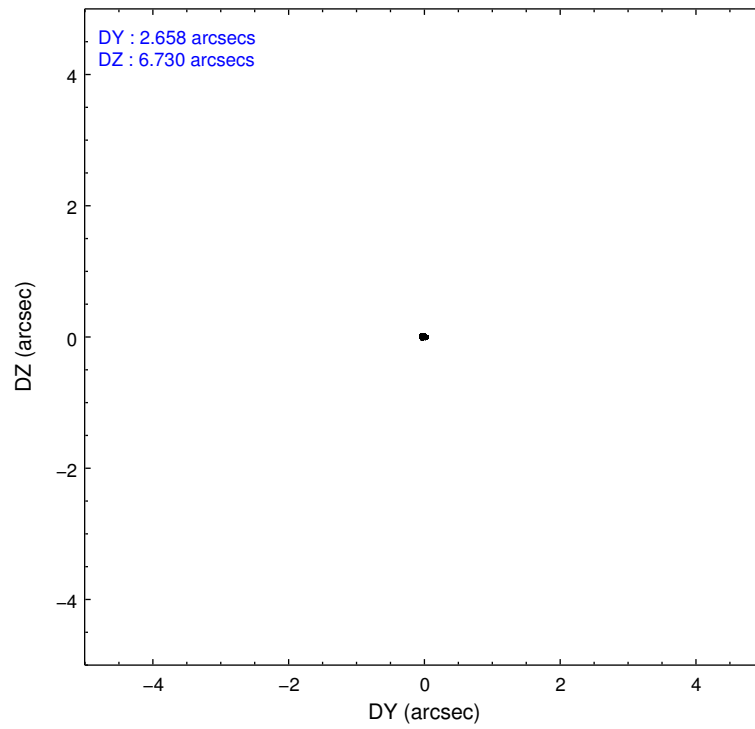
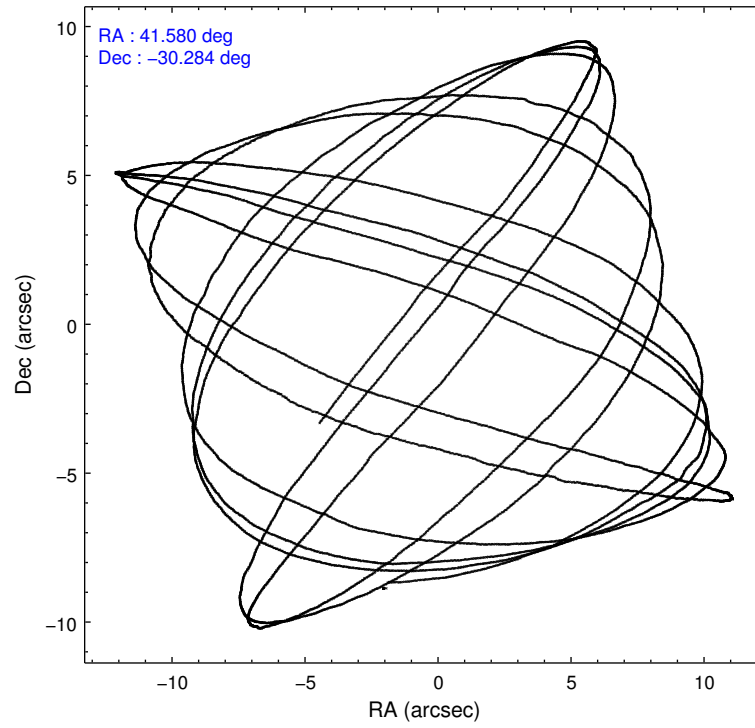
### 2.1.4 Events

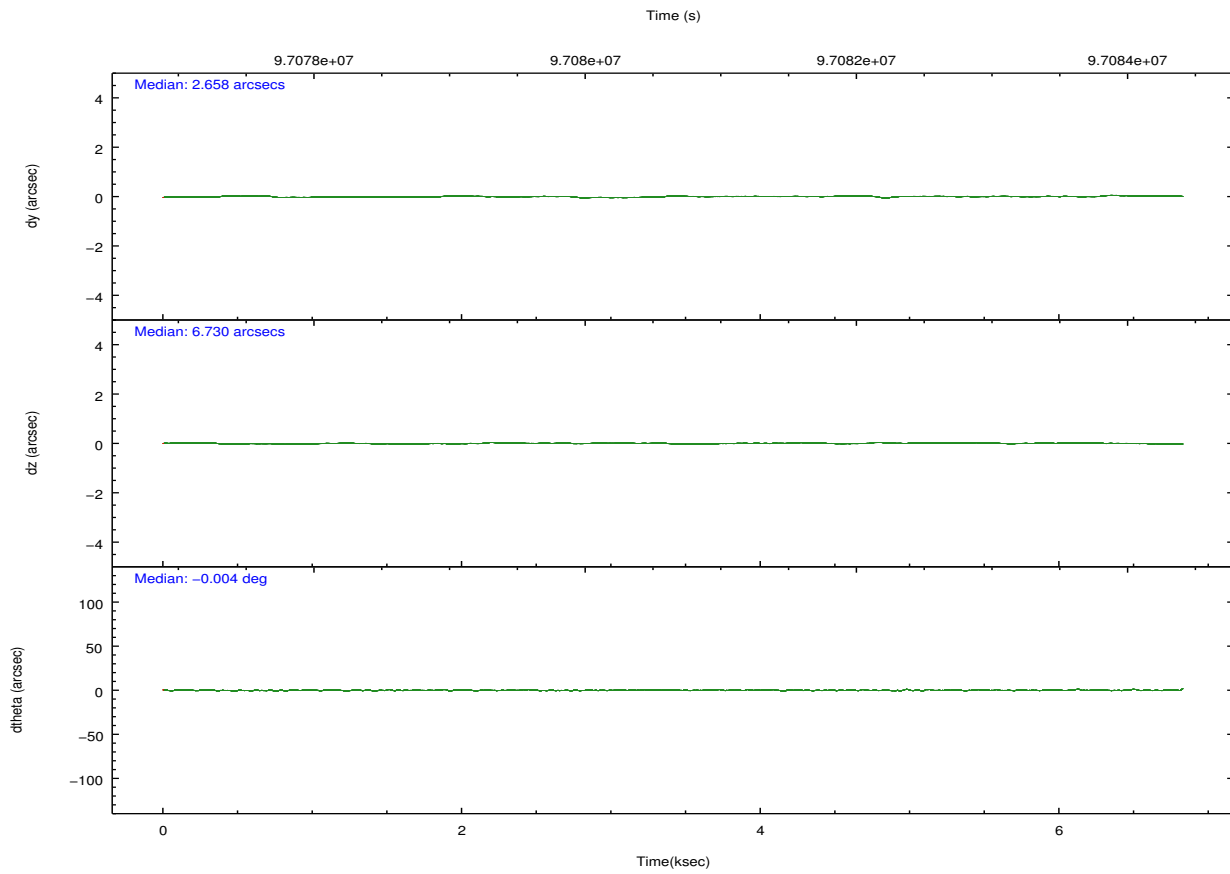
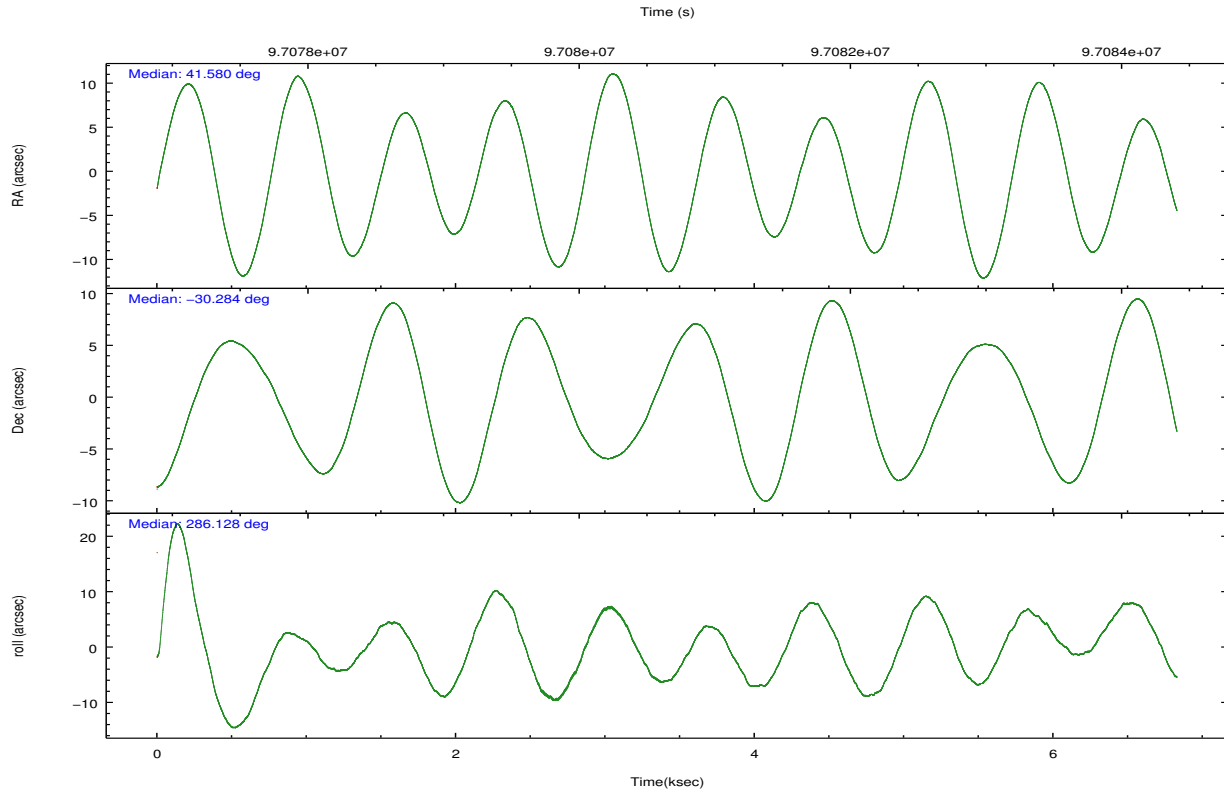
	ccd 2	ccd 3	ccd 5	ccd 6	ccd 7	ccd 8		ccd 2	ccd 3	ccd 5	ccd 6	ccd 7	ccd 8
level 1 events	31705	32226	46978	32090	44316	40312	grade 0 events	1825	1581	3181	1550	2774	2888
rejected events	27776	28605	24502	28209	24144	31829		5%	4%	6%	4%	6%	7%
rejected %	87%	88%	52%	87%	54%	78%	grade 1 events	14	18	77	12	66	36
								0%	0%	0%	0%	0%	0%
							grade 2 events	789	693	7020	776	4179	1765
								2%	2%	14%	2%	9%	4%
							grade 3 events	342	335	970	412	1905	915
								1%	1%	2%	1%	4%	2%
							grade 4 events	352	336	900	347	1875	841
								1%	1%	1%	1%	4%	2%
							grade 5 events	1095	1262	3597	1308	4098	1632
								3%	3%	7%	4%	9%	4%
							grade 6 events	624	679	10415	800	9449	2077
								1%	2%	22%	2%	21%	5%
							grade 7 events	26664	27322	20818	26885	19970	30158
								84%	84%	44%	83%	45%	74%

## 2.2 Compared Parameters

Parameter	Planned	Actual	Parameter	Planned	Actual
Instrument	ACIS	ACIS	Obspar format version number	7	7
Detector	ACIS-235678	ACIS-235678	Obspar file type	PREDICTED	ACTUAL
Grating	NONE	NONE	Obspar update status	NONE	UPDATED
Data mode	VFAINT	VFAINT	Number of optional ACIS chips dropped	0	0
Observation mode	POINTING	POINTING	On-chip summing requested	N	N
[deg] Pointing RA	41.557733	41.58080127429365	Subarray requested	NONE	NONE
[deg] Pointing Dec	-30.265459	-30.28417073416155	Alternating exposures requested	N	N
[deg] Pointing Roll	285.964831	286.1330686981306	[s] Primary exposure time	0.000000	3.2
[mm] SIM focus pos	-0.684267	-0.6828225247311905			
[mm] SIM defocus	0	0.001444936568705701			
[mm] SIM translation stage pos	-190.132523	-190.1400660498719			
[mm] SIM translation stage offset	0	0.00754346686406393			
[s] Observation start time (MET)	97078595.184000	97077049.192764			
Observation start date	2001-01-28T14:15:31	2001-01-28T13:50:49			
[s] Observation end time (MET)	97084064.184000	97084377.943046			
Observation end date	2001-01-28T15:46:40	2001-01-28T15:52:57			
Read mode	TIMED	TIMED			

## 2.3 Aspect



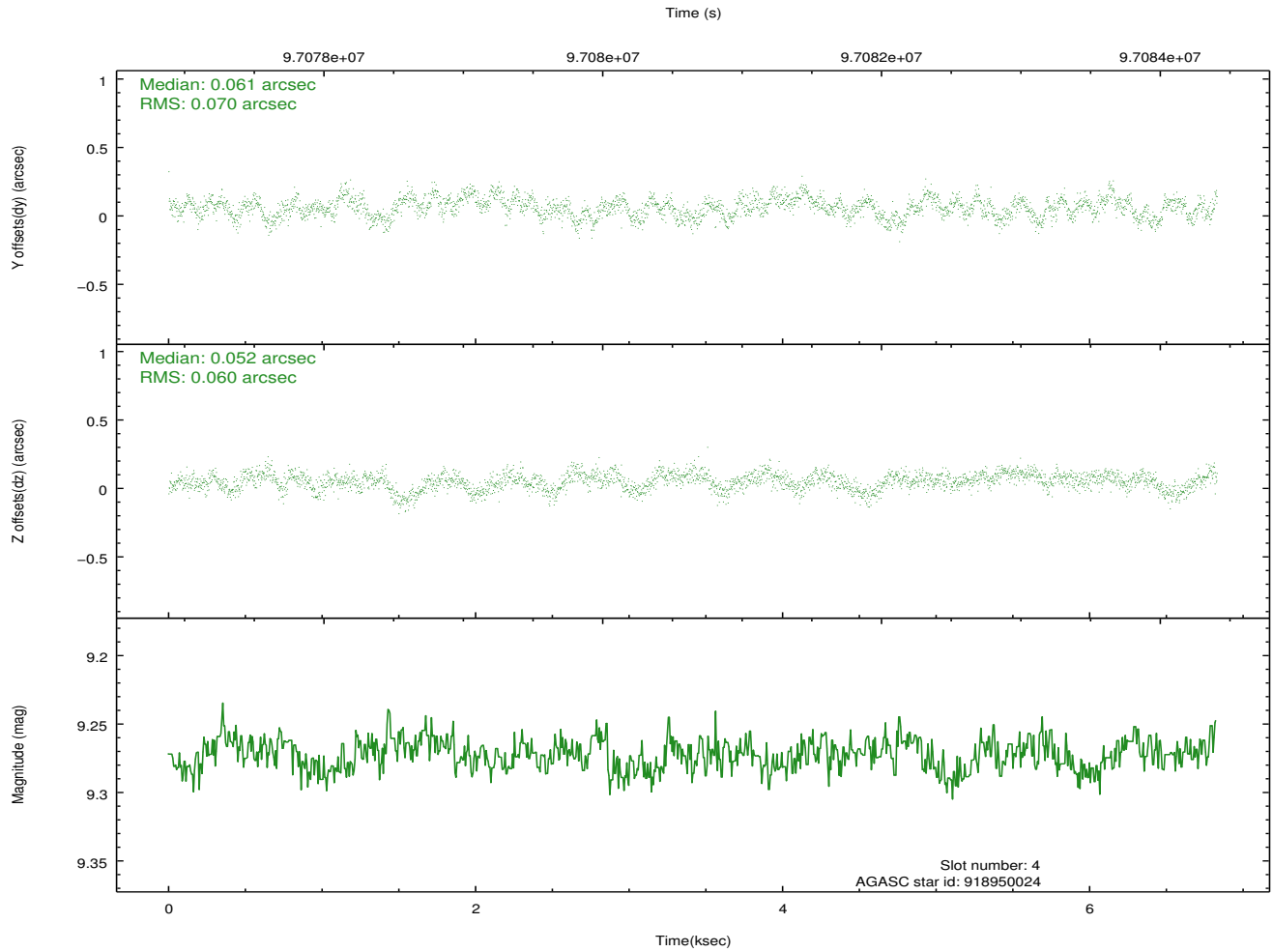
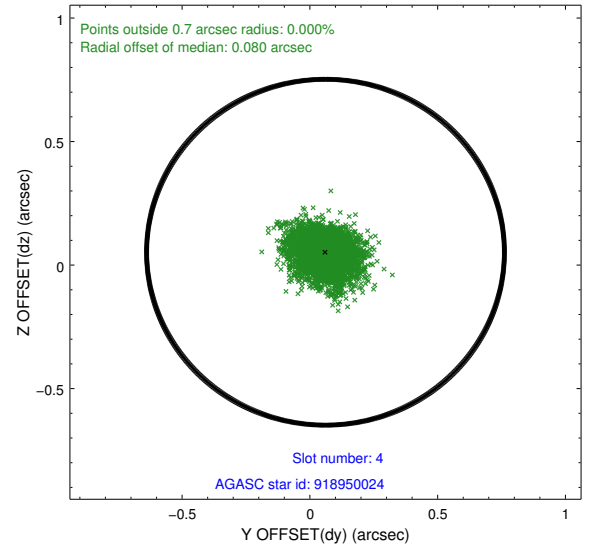
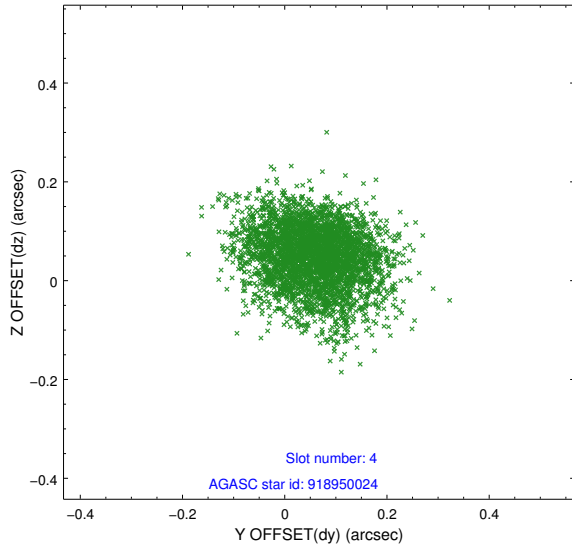


### Slot Statistics

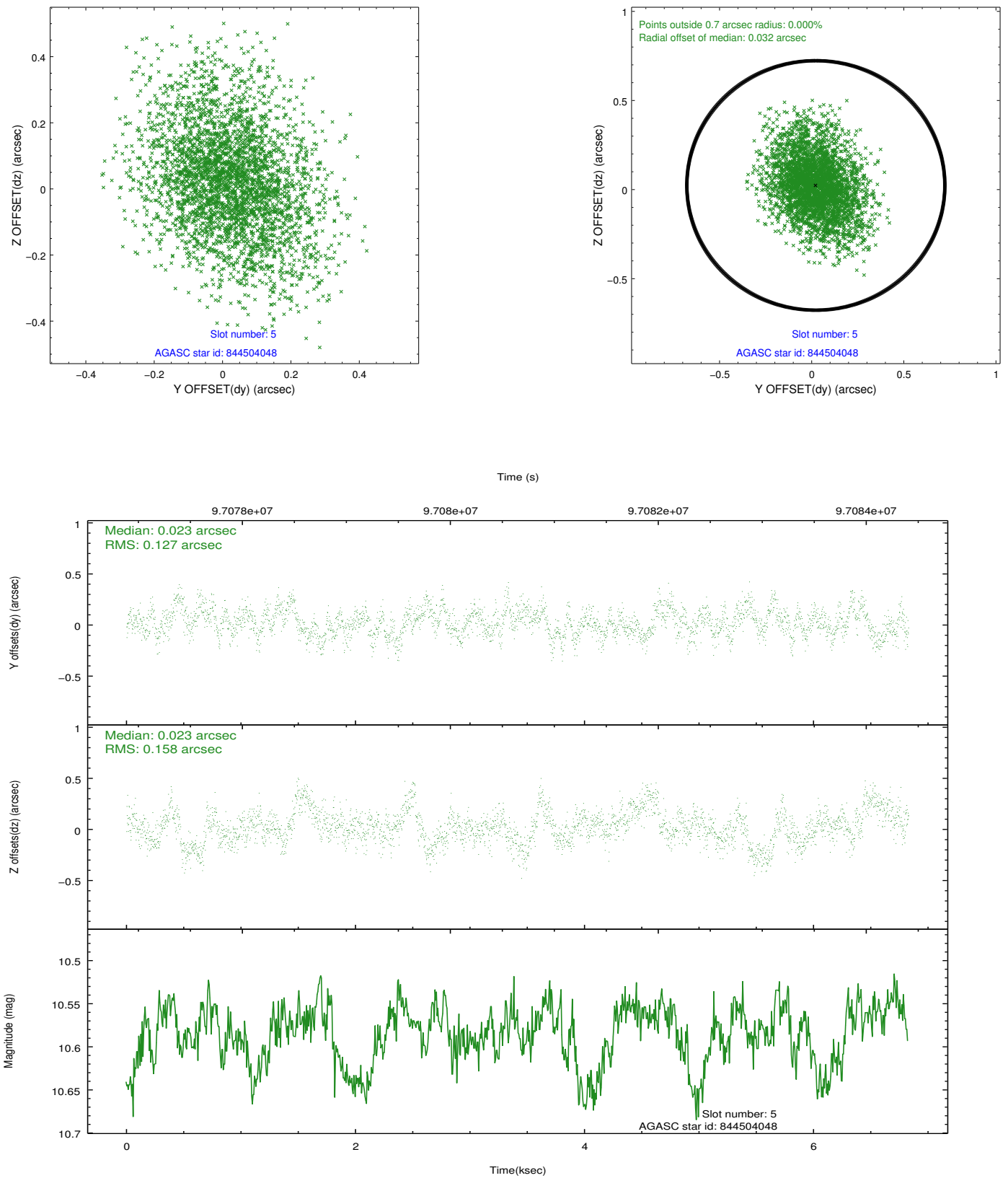
slot	status	id	mag	n_pts	med_dy	med_dz	dr1	dr2	ra	dec	mean_y	mean_z
0	FID	ACIS-S-2	7.12	1666	-0.012	0.011	0.006	0.011	0.000000	0.000000	-755.29	-1727.88
1	FID	ACIS-S-4	7.20	1666	-0.061	0.003	0.005	0.011	0.000000	0.000000	2157.55	179.73
2	FID	ACIS-S-5	7.24	1666	0.041	-0.005	0.006	0.011	0.000000	0.000000	-1806.99	174.35
3	UNUSED		0.00	0	0.000	0.000	0.000	0.000	0.000000	0.000000	0.00	0.00
4	GUIDE	918950024	9.27	3332	0.061	0.052	0.099	0.160	41.512438	-30.524479	858.82	-390.67
5	GUIDE	844504048	10.58	3330	0.023	0.023	0.217	0.359	41.982243	-29.569526	-2039.80	1966.96
6	GUIDE	843590712	9.83	3331	-0.129	-0.108	0.120	0.197	41.013881	-29.926522	-1635.72	-1295.86
7	GUIDE	918953472	10.18	3330	0.046	0.033	0.138	0.228	41.953343	-30.707298	1868.43	739.80

## 2.4 Star Slots

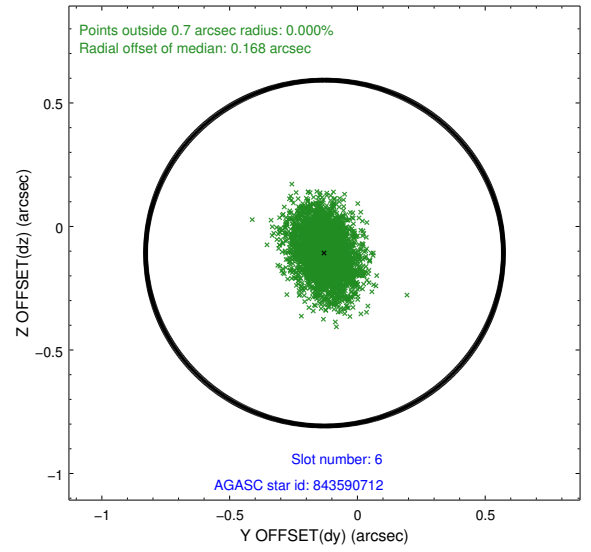
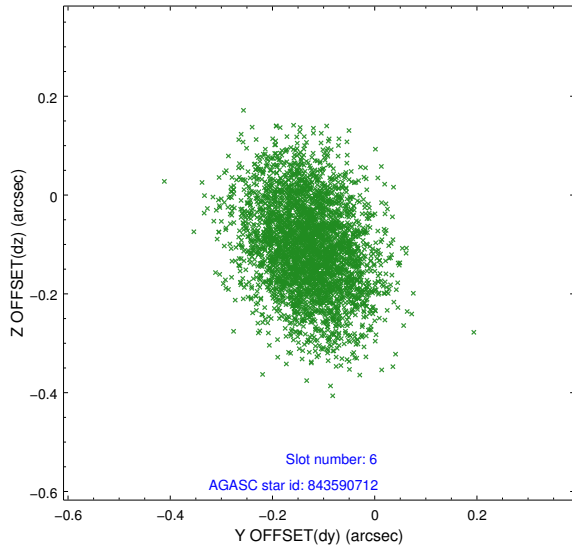
### 2.4.1 Slot 4



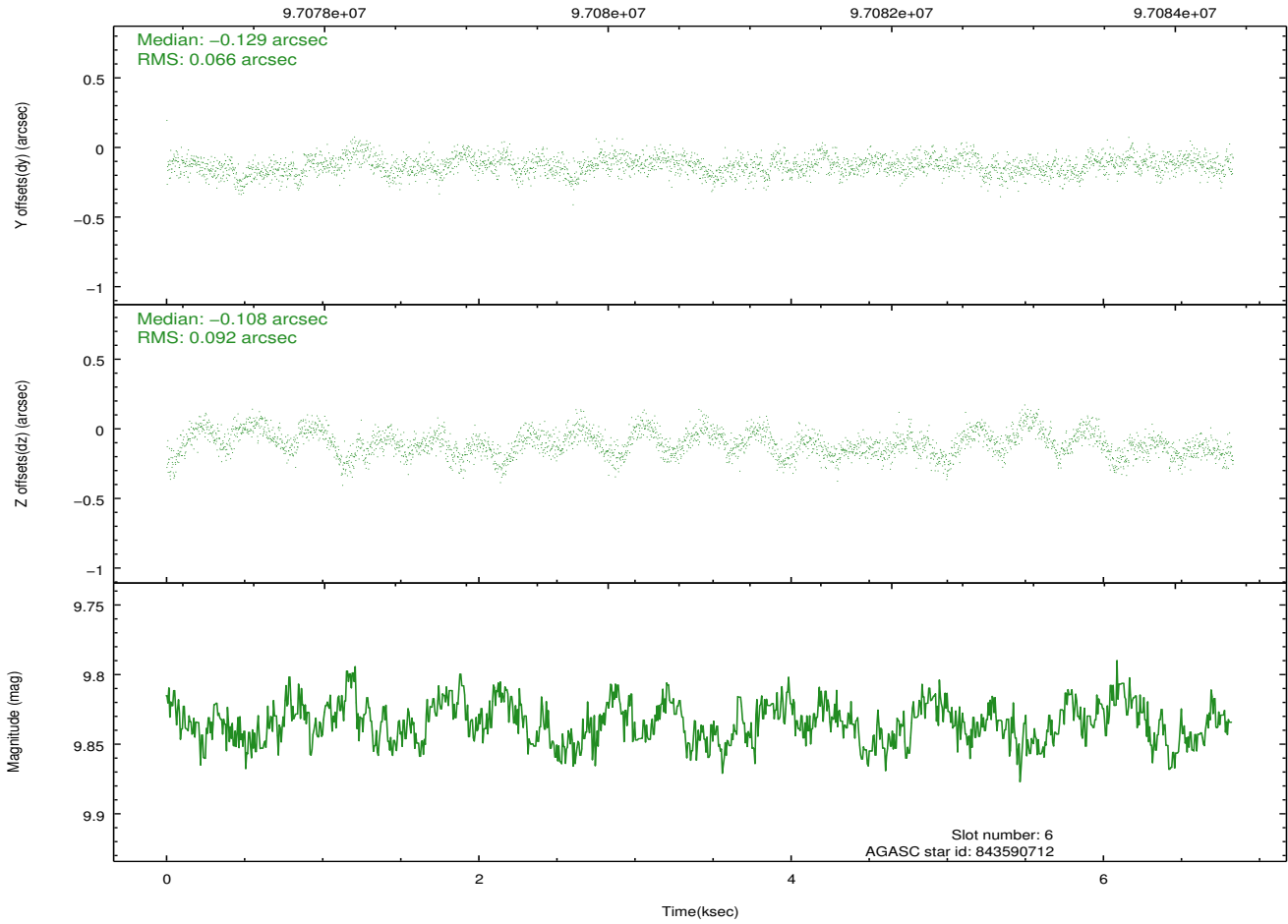
## 2.4.2 Slot 5



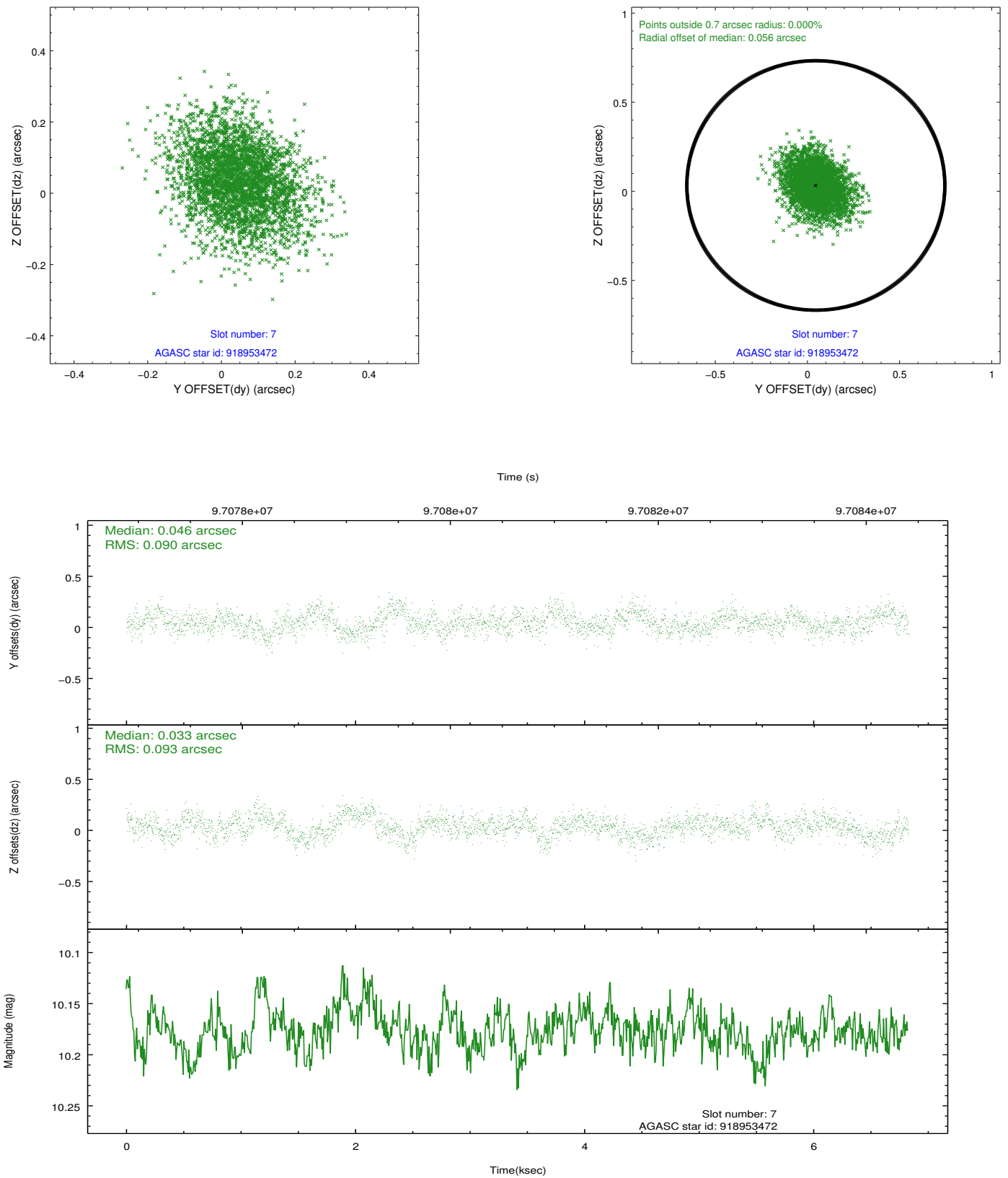
### 2.4.3 Slot 6



Time (s)

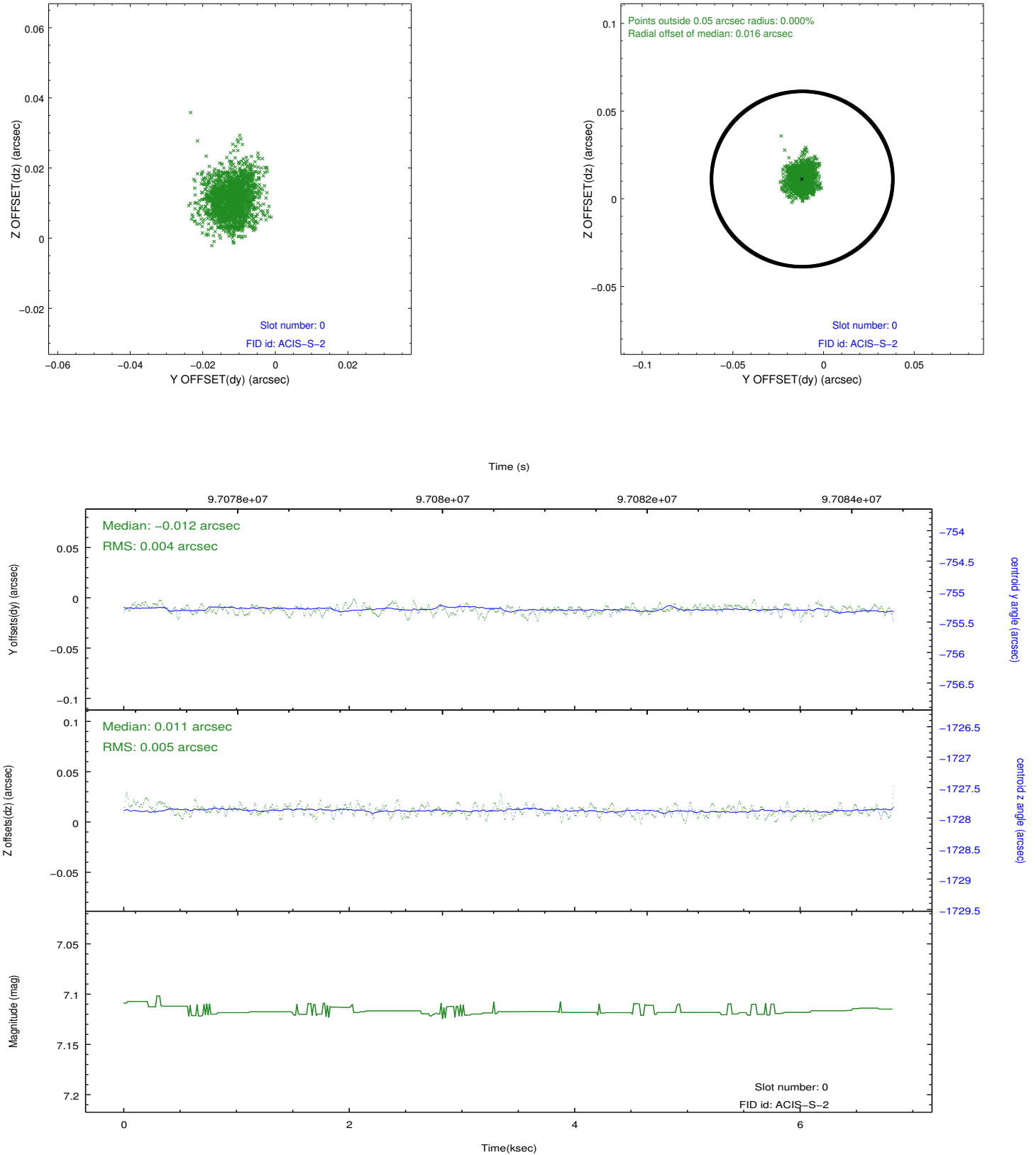


## 2.4.4 Slot 7

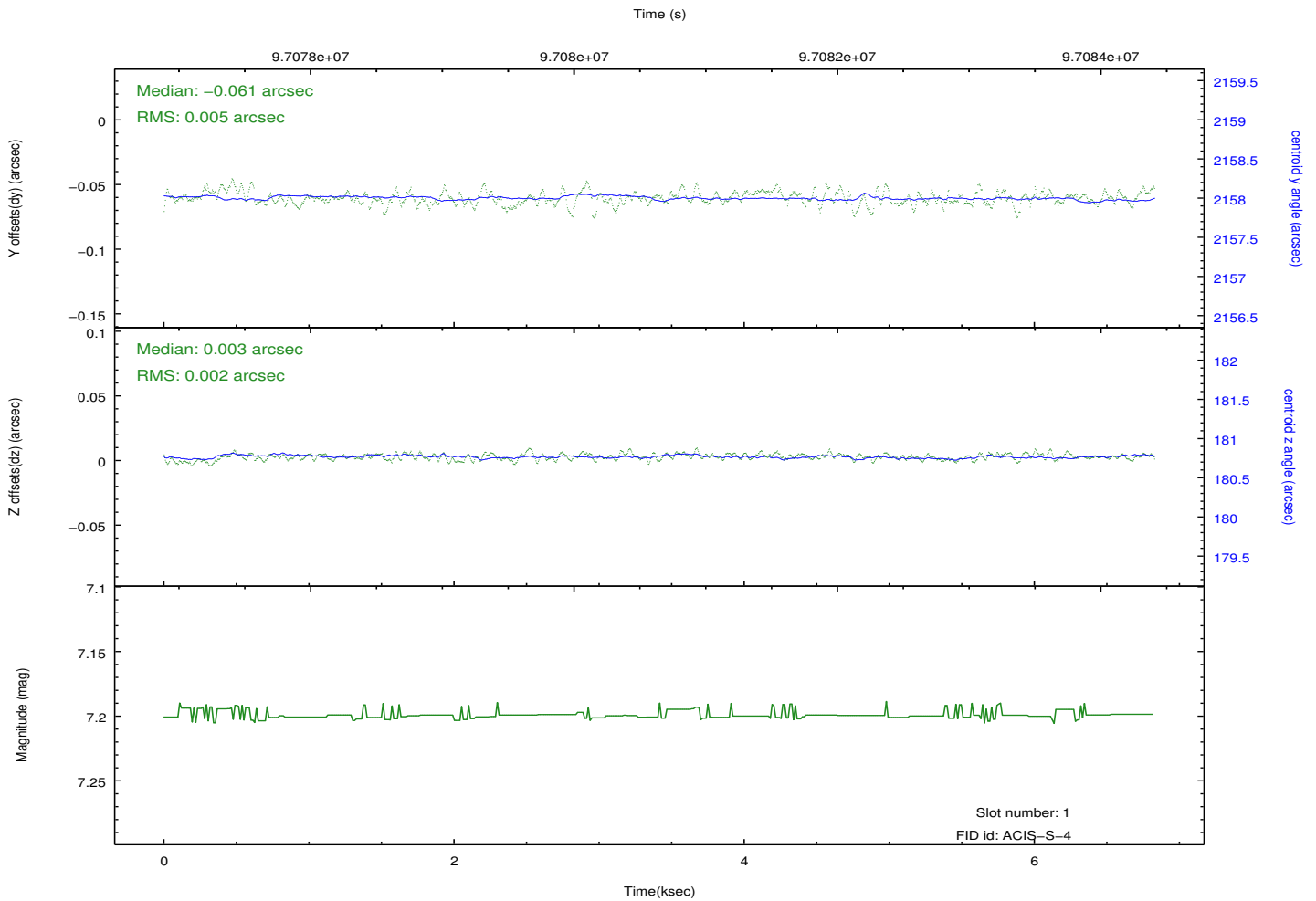
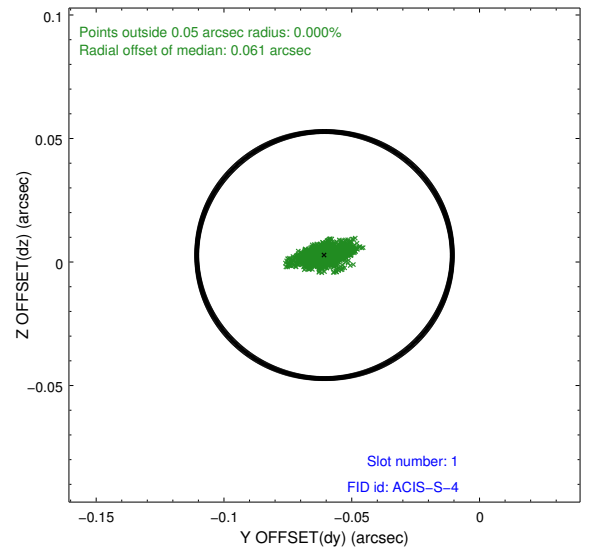
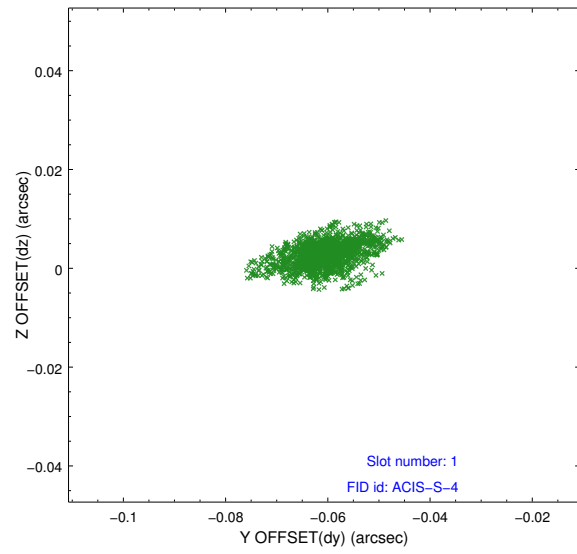


## 2.5 FID Slots

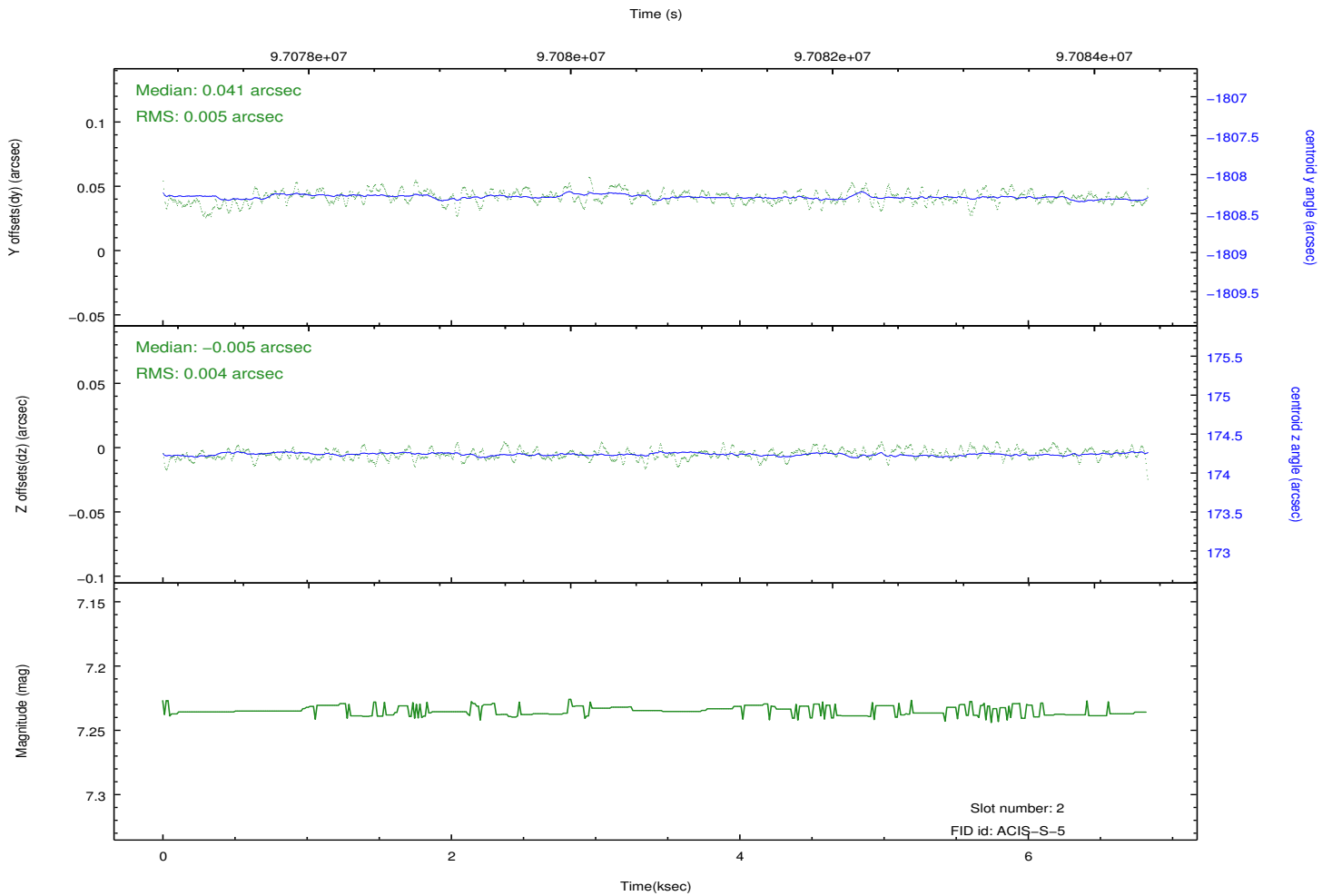
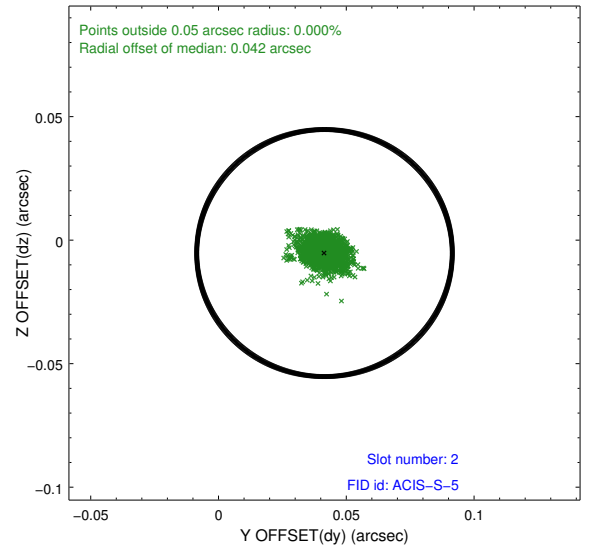
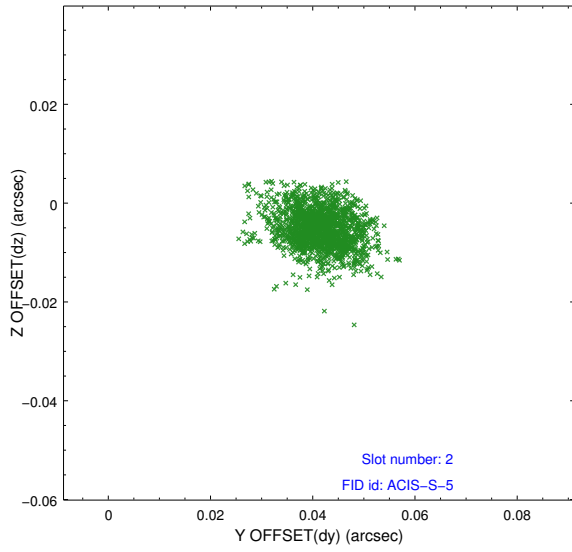
### 2.5.1 Slot 0



## 2.5.2 Slot 1



### 2.5.3 Slot 2



## A Summary

### A.1 Status

V&V Scientist	Jen Lauer
V&V Date (YYYY-MM-DD)	2012.09.17
V&V Edition	1
V&V Disposition and Status	OK
V&V Charge Time	5.411

### A.2 Comments