

V&V Reference Report

L2 ASCDS Version : 10.2.4

Observation 16241 - L2 Version 1
Chandra X-Ray Center

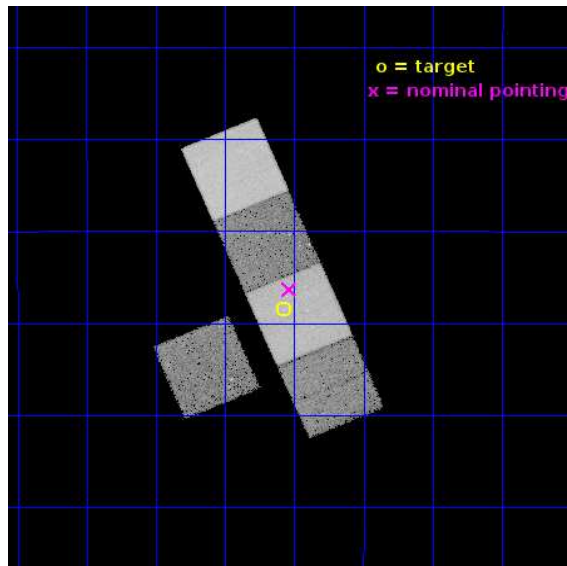
L2 Processing Date : Sep 21 2014

Contents

1	Front	2
2	OBI	3
2.1	OBI	3
2.1.1	Images	3
2.1.2	Bias	3
2.1.3	Parameters	4
2.1.4	Events	4
2.2	Compared Parameters	5
2.3	Aspect	6
2.4	Star Slots	9
2.4.1	Slot 3	9
2.4.2	Slot 4	10
2.4.3	Slot 5	11
2.4.4	Slot 6	12
2.4.5	Slot 7	13
2.5	FID Slots	14
2.5.1	Slot 0	14
2.5.2	Slot 1	15
2.5.3	Slot 2	16
A	Summary	17
A.1	Status	17
A.2	Comments	17

1 Front

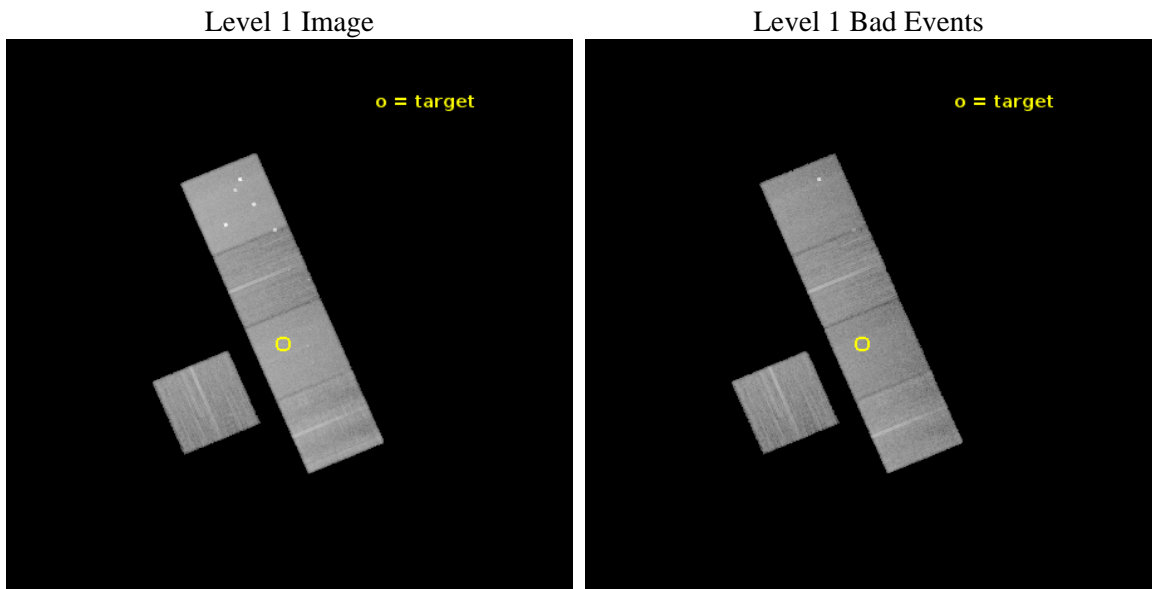
seq_num	601132	Sequence number
obs_id	16241	Observation id
title	The Missing Baryons Around Early-Type Galaxies	Proposal title
observer	Dr. Joel Bregman	Principal investigator
object	NGC 682	Source name
dtycycle	0	
cycle	P	events from which exps? Prim/Second/Both
ra_targ	27.269167	Observer's specified target RA [deg]
dec_targ	-14.974722	Observer's specified target Dec [deg]
ra_nom	27.258802895754	Nominal RA [deg]
dec_nom	-14.938629238887	Nominal Dec [deg]
roll_nom	66.942944471761	Nominal Roll [deg]
revision	1	Processing version of data
ontime	30063.735369086	Sum of GTIs [s]
livetime	29670.930533889	Livetime [s]
ontime3	30063.612249076	Sum of GTIs [s]
ontime5	30063.694329083	Sum of GTIs [s]
ontime6	30063.65328908	Sum of GTIs [s]
ontime7	30063.735369086	Sum of GTIs [s]
ontime8	30063.571209073	Sum of GTIs [s]
l2events	264690	Number of level 2 events



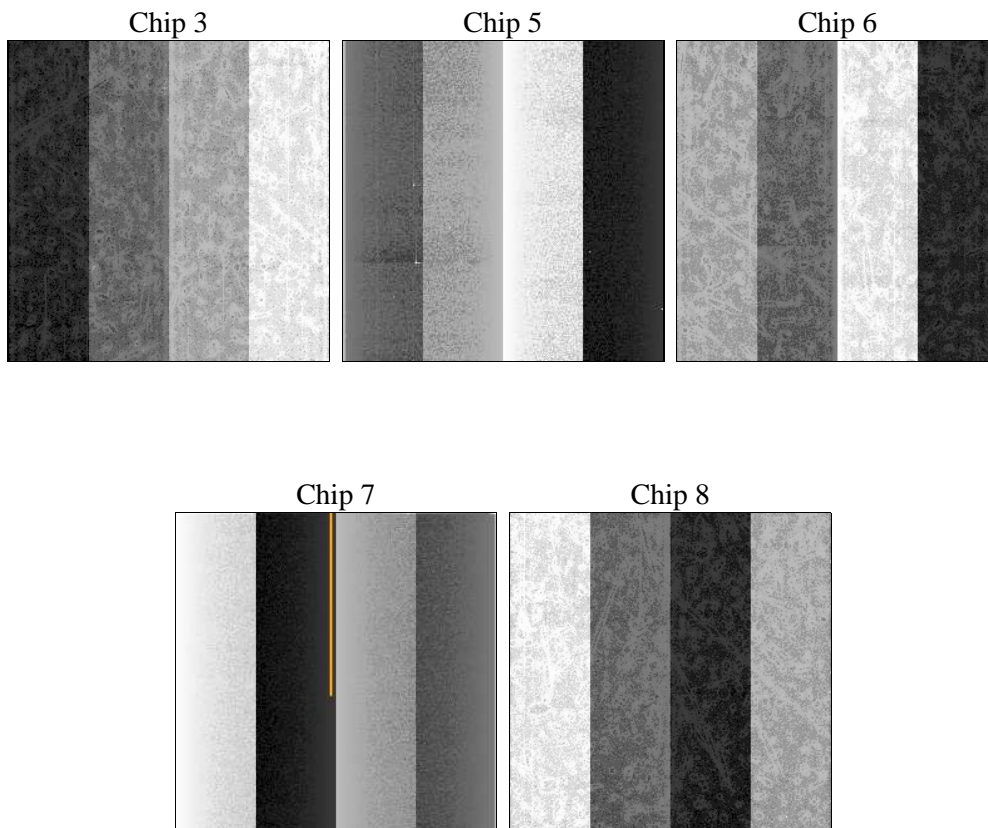
2 OBI

2.1 OBI

2.1.1 Images



2.1.2 Bias



2.1.3 Parameters

obi_num	0	Obi number	sched_exp_time	30000.000000	[s] Scheduled observation exposure time
ascdsver	10.2.4	Processing system revision	ontime	30063.735369086	Sum of GTIs [s]
caldbver	4.6.3	 	ontime3	30063.612249076	Sum of GTIs [s]
date	2014-09-21T19:06:26	Date and time of file creation	ontime5	30063.694329083	Sum of GTIs [s]
revision	1	Processing version of data	ontime6	30063.65328908	Sum of GTIs [s]
			ontime7	30063.735369086	Sum of GTIs [s]
			ontime8	30063.571209073	Sum of GTIs [s]
			l1events	1030418	Number of level 1 events

2.1.4 Events

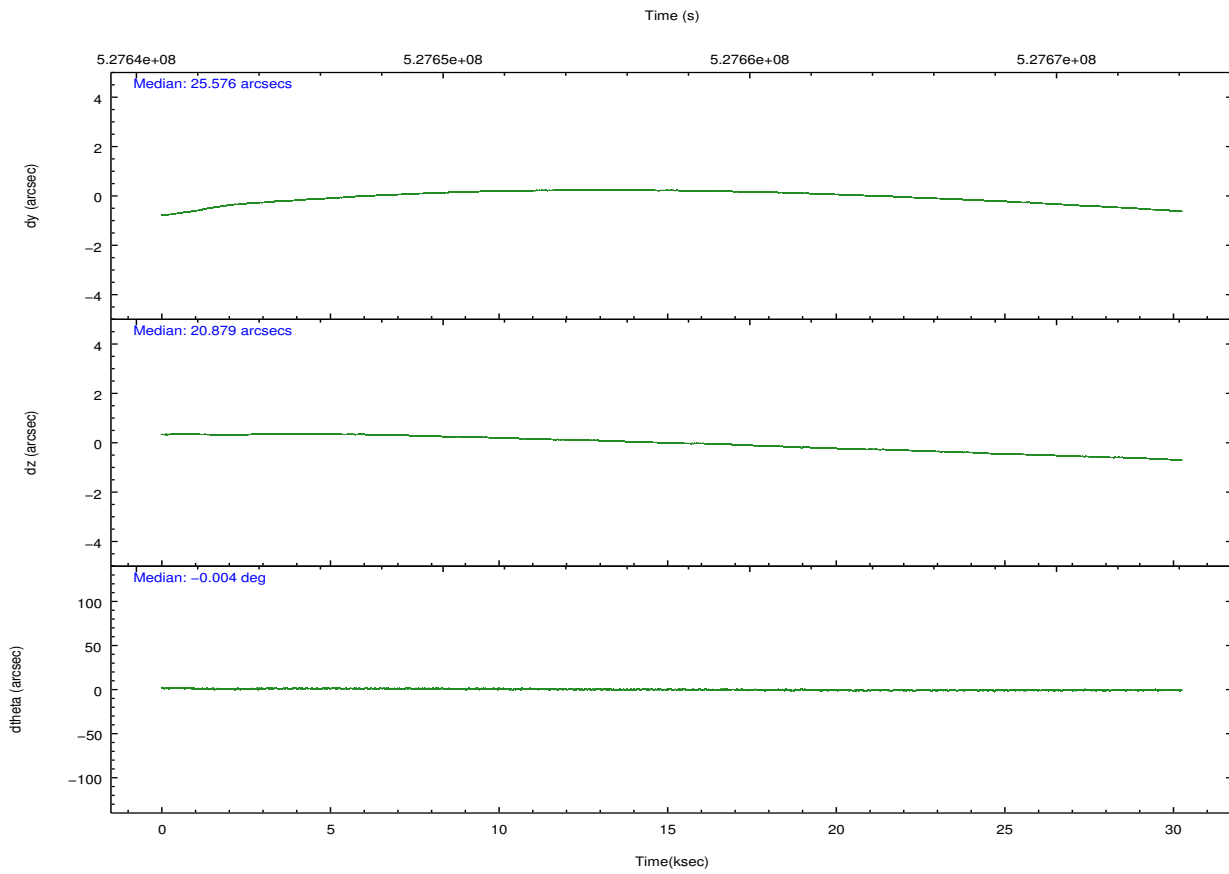
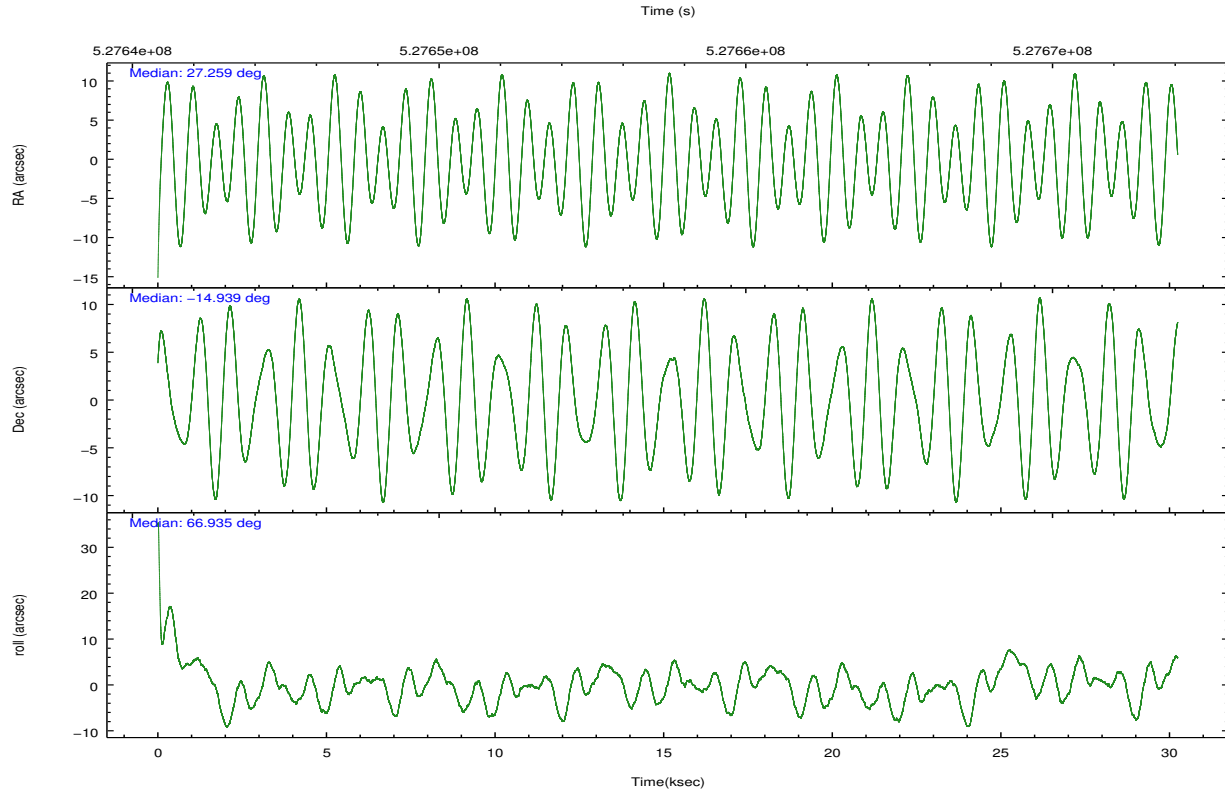
	ccd 3	ccd 5	ccd 6	ccd 7	ccd 8
level 1 events	152331	285955	164811	218499	208822
rejected events	135325	141656	144704	123923	152802
rejected %	88%	49%	87%	56%	73%

	ccd 3	ccd 5	ccd 6	ccd 7	ccd 8
grade 0 events	5899	23568	6855	8170	15723
	3%	8%	4%	3%	7%
grade 1 events	106	678	89	290	151
	0%	0%	0%	0%	0%
grade 2 events	3777	43032	4617	19482	13612
	2%	15%	2%	8%	6%
grade 3 events	1822	4535	2036	7906	5889
	1%	1%	1%	3%	2%
grade 4 events	1832	4437	2016	7918	5635
	1%	1%	1%	3%	2%
grade 5 events	8333	19869	8588	22064	12216
	5%	6%	5%	10%	5%
grade 6 events	3683	68757	4589	51117	15181
	2%	24%	2%	23%	7%
grade 7 events	126879	121079	136021	101552	140415
	83%	42%	82%	46%	67%

2.2 Compared Parameters

Parameter	Planned	Actual	Parameter	Planned	Actual
Instrument	ACIS	ACIS	Obspar format version number	7	7
Detector	ACIS-35678	ACIS-35678	Obspar file type	PREDICTED	ACTUAL
Grating	NONE	NONE	Obspar update status	NONE	UPDATED
Data mode	VFAINT	VFAINT	CCD I0 on	N	N
Observation mode	POINTING	POINTING	CCD I1 on	N	N
[deg] Pointing RA	27.262596	27.25880289575372	CCD I2 on	N	N
[deg] Pointing Dec	-14.965840	-14.93862923888717	CCD I3 on	Y	Y
[deg] Pointing Roll	66.787285	66.94294447176084	CCD S0 on	N	N
[mm] SIM focus pos	-0.684267	-0.6828225247311905	CCD S1 on	O2	Y
[mm] SIM defocus	0	0.001444936568705701	CCD S2 on	Y	Y
[mm] SIM translation stage pos	-190.132523	-190.1400660498719	CCD S3 on	Y	Y
[mm] SIM translation stage offset	0	0.00754346686406393	CCD S4 on	O1	Y
[s] Observation start time (MET)	527642579.184000	527641457.98637	CCD S5 on	N	N
Observation start date	2014-09-20T23:21:52	2014-09-20T23:04:17	Number of optional ACIS chips dropped	0	0
[s] Observation end time (MET)	527672579.184000	527673418.51315	On-chip summing requested	N	N
Observation end date	2014-09-21T07:41:52	2014-09-21T07:56:58	Subarray requested	NONE	NONE
Read mode	TIMED	TIMED	Alternating exposures requested	N	N
			[s] Primary exposure time	0.000000	3.1

2.3 Aspect

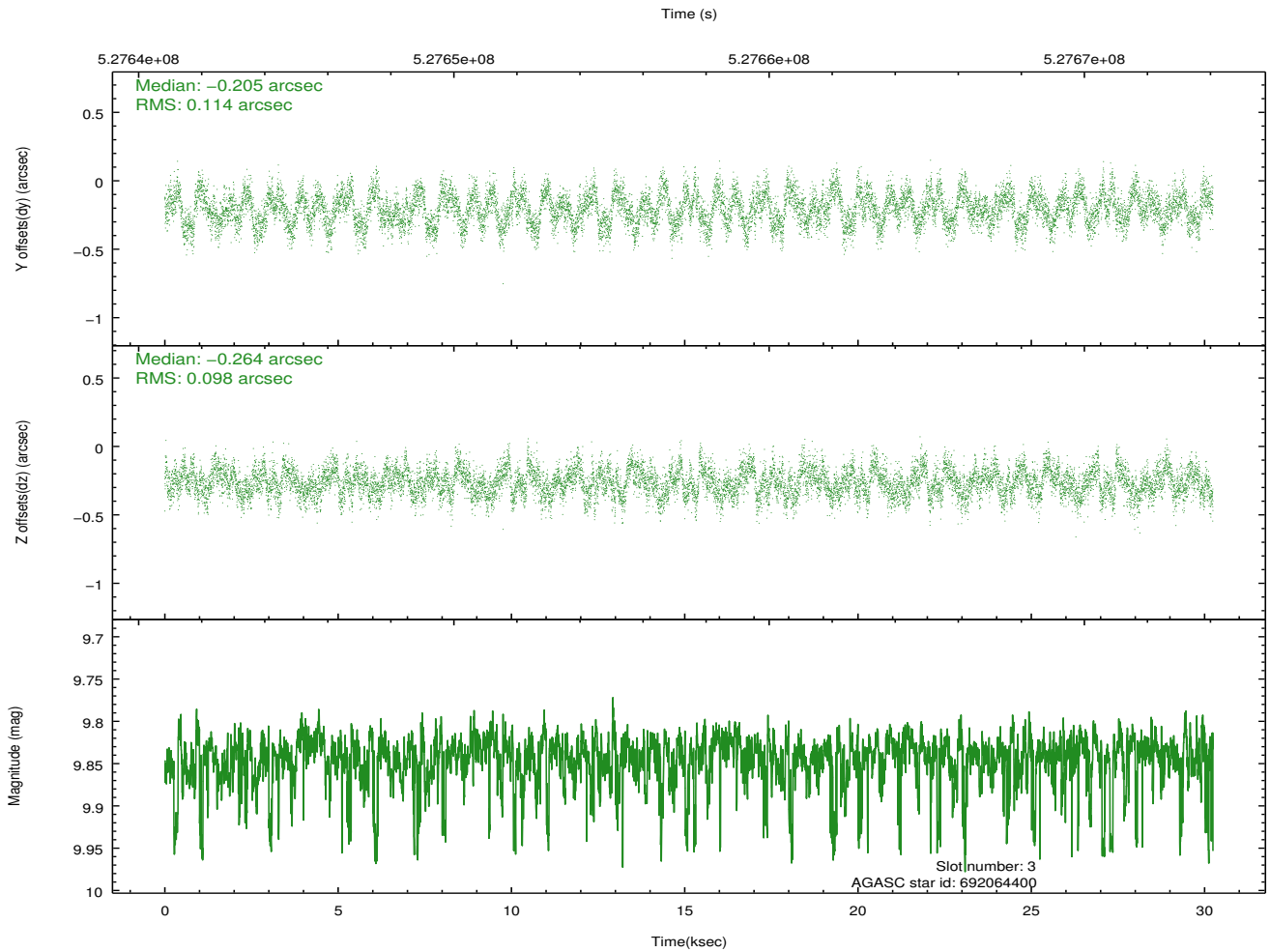
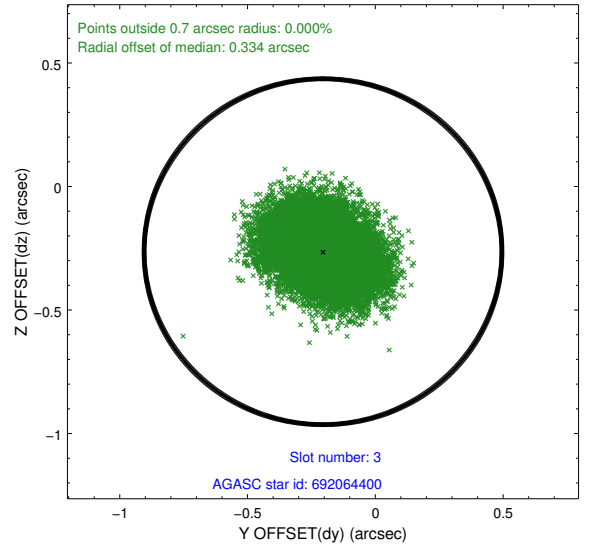
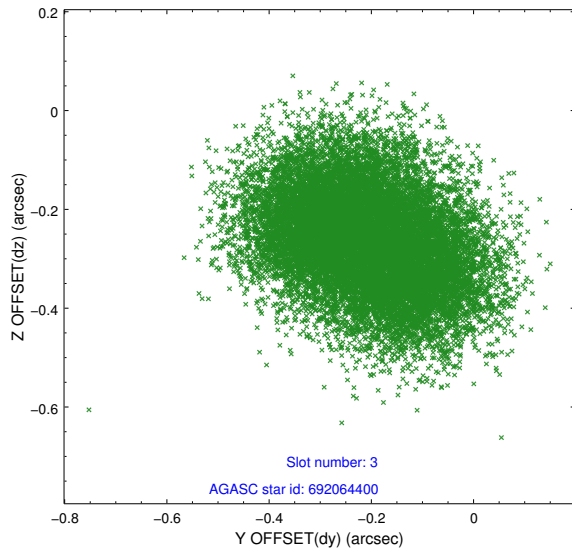


Slot Statistics

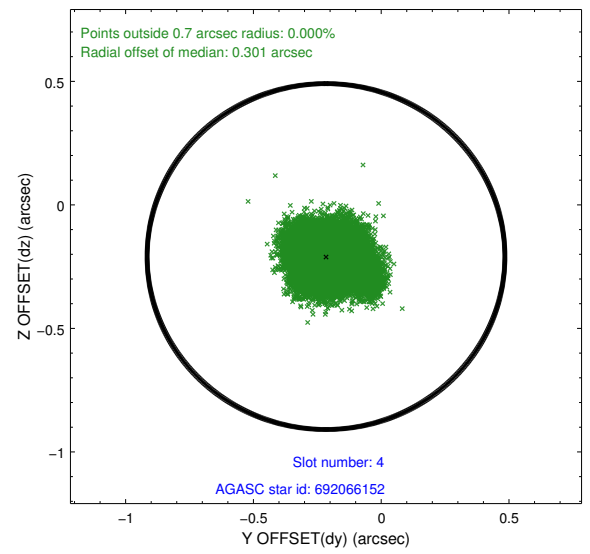
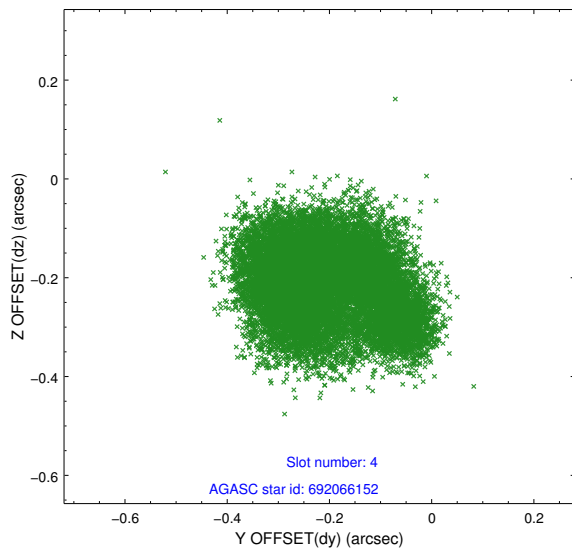
slot	status	id	mag	n_pts	med_dy	med_dz	dr1	dr2	ra	dec	mean_y	mean_z
0	FID	ACIS-S-2	6.98	7376	-0.192	-0.012	0.011	0.017	0.000000	0.000000	-778.95	-1742.37
1	FID	ACIS-S-4	7.07	7376	0.370	0.096	0.009	0.016	0.000000	0.000000	2134.85	166.14
2	FID	ACIS-S-5	7.09	7376	-0.208	-0.076	0.009	0.015	0.000000	0.000000	-1831.72	159.72
3	GUIDE	692064400	9.84	14728	-0.205	-0.264	0.164	0.253	27.009544	-14.202614	2176.47	1894.13
4	GUIDE	692066152	8.39	14748	-0.216	-0.209	0.126	0.197	26.984652	-14.673478	584.70	1304.01
5	GUIDE	692067640	6.55	14711	-0.222	-0.358	0.082	0.128	27.153512	-14.765242	513.70	633.34
6	GUIDE	767429904	9.23	14739	0.479	0.545	0.152	0.234	27.508778	-15.769061	-2319.58	-1924.42
7	GUIDE	767432880	8.74	14742	0.154	0.280	0.108	0.170	27.909221	-15.153897	259.92	-2332.84

2.4 Star Slots

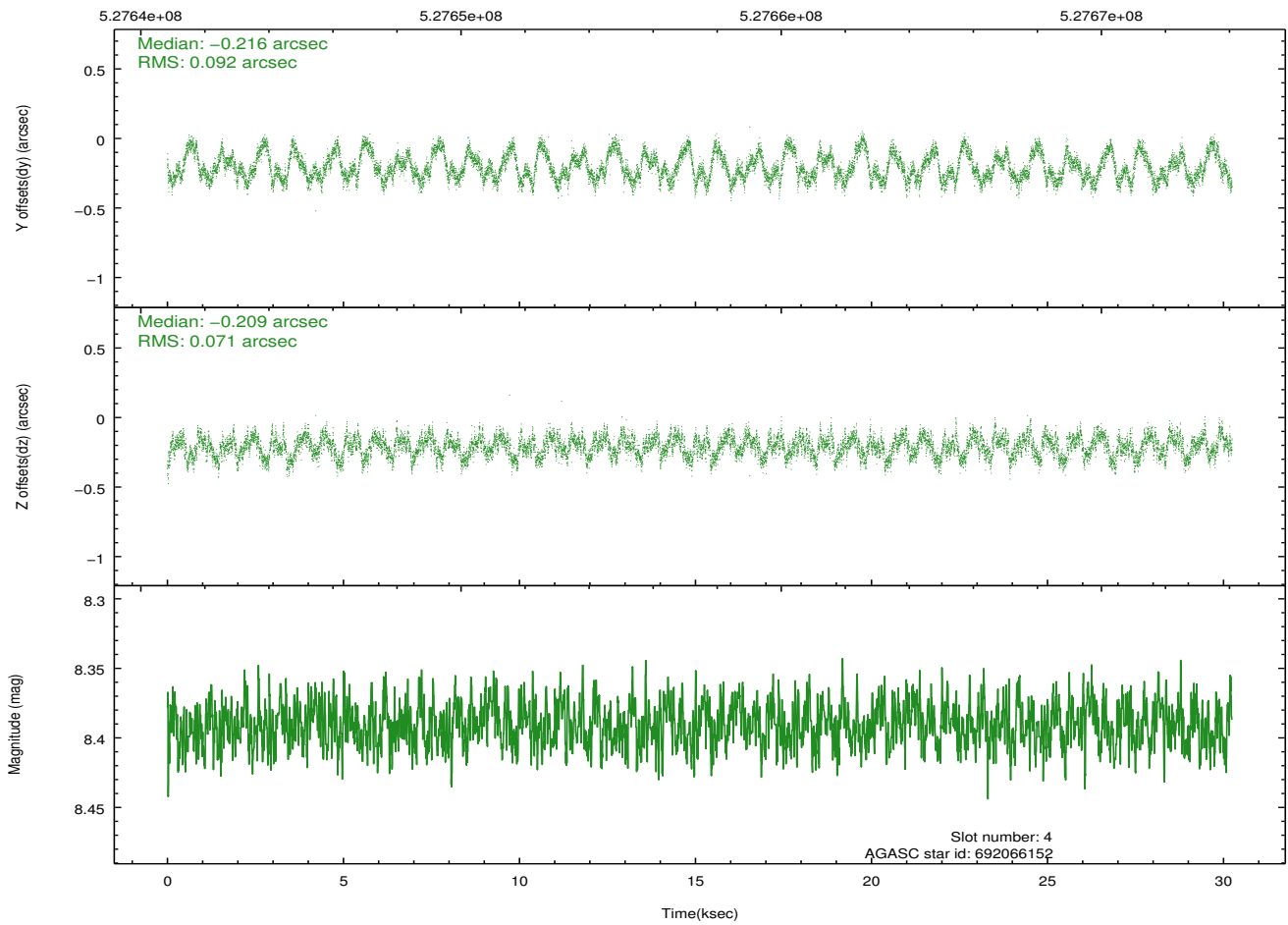
2.4.1 Slot 3



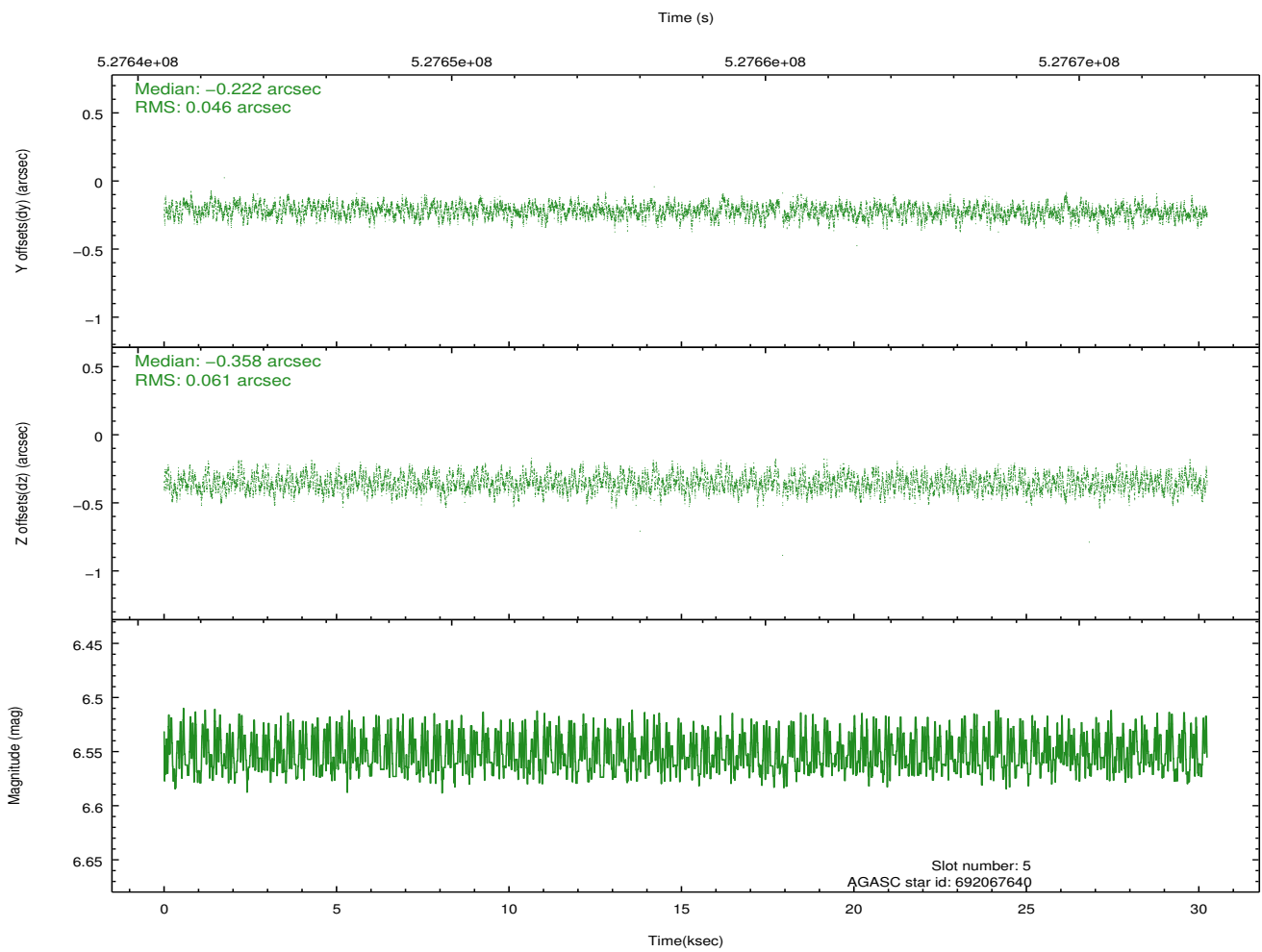
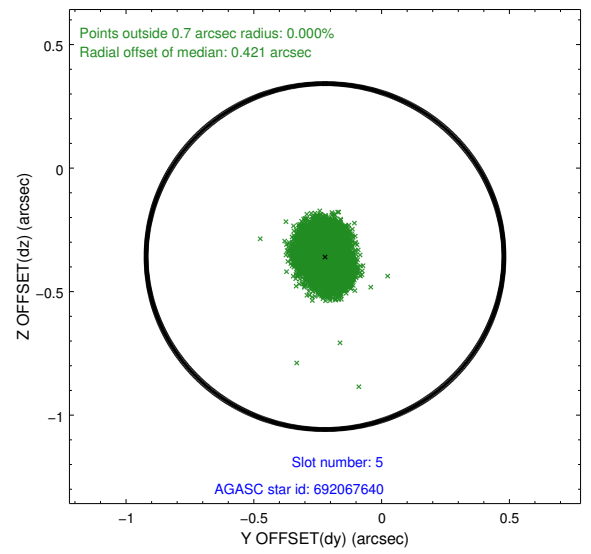
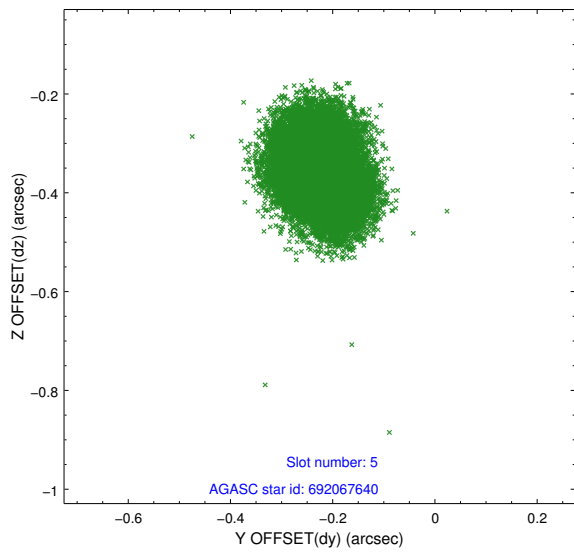
2.4.2 Slot 4



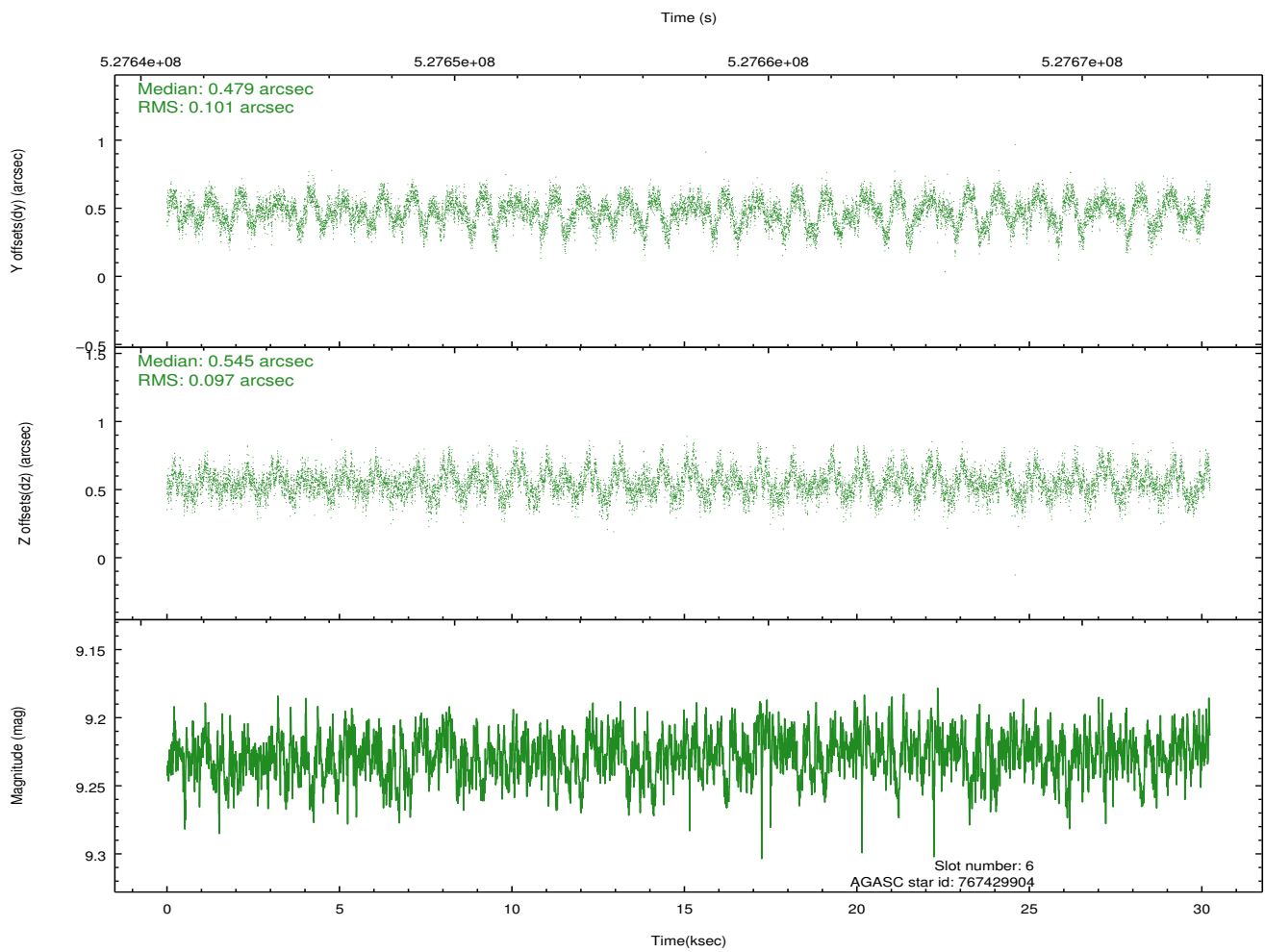
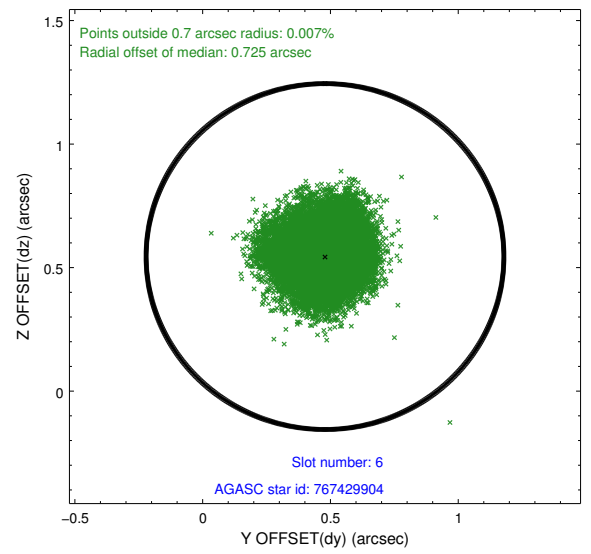
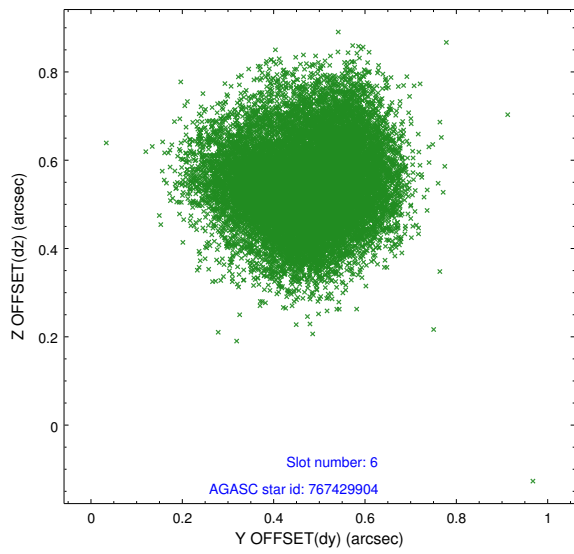
Time (s)



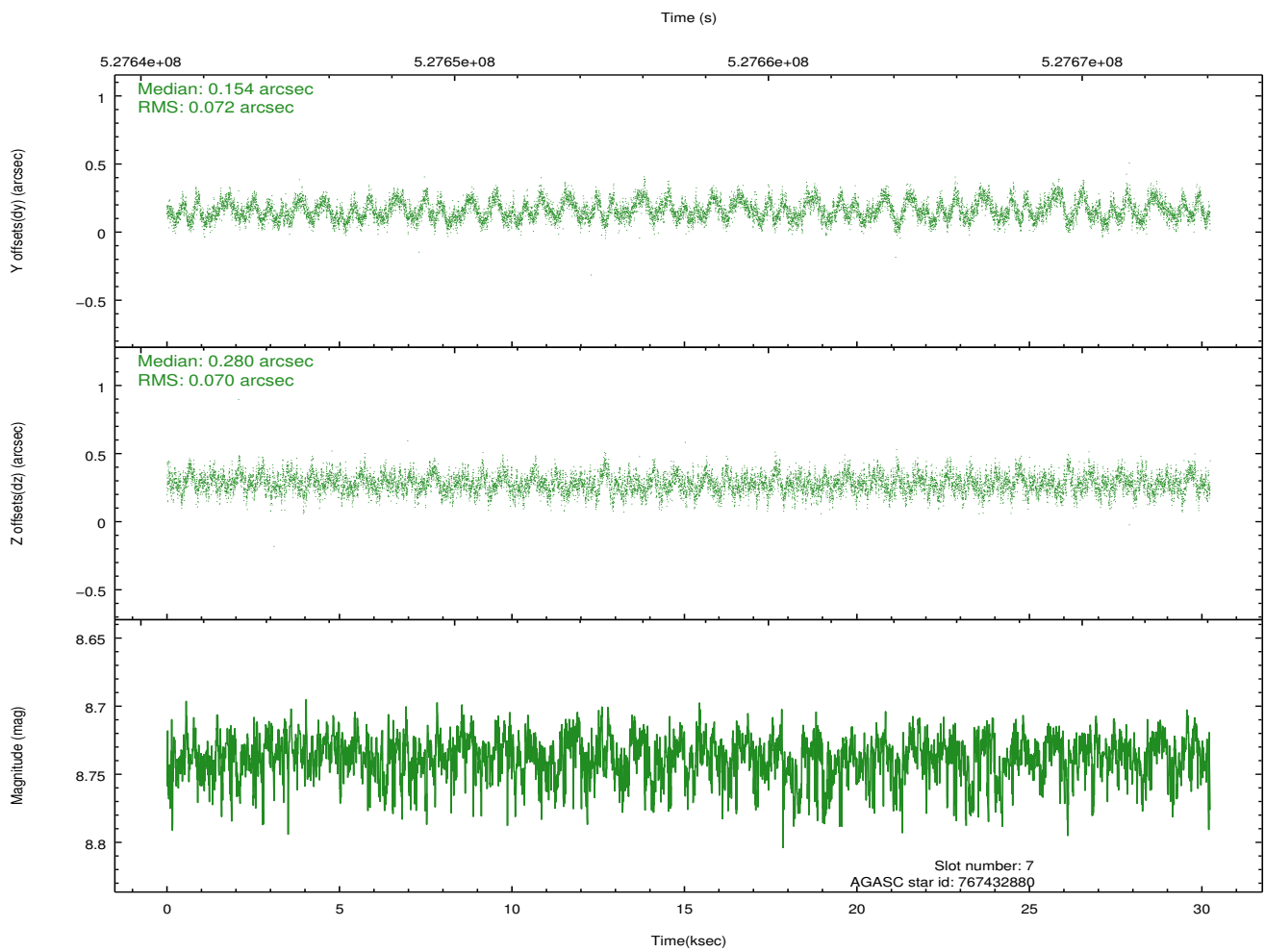
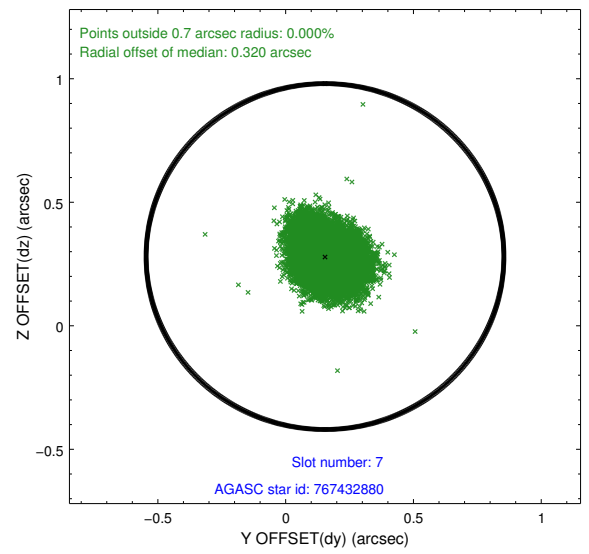
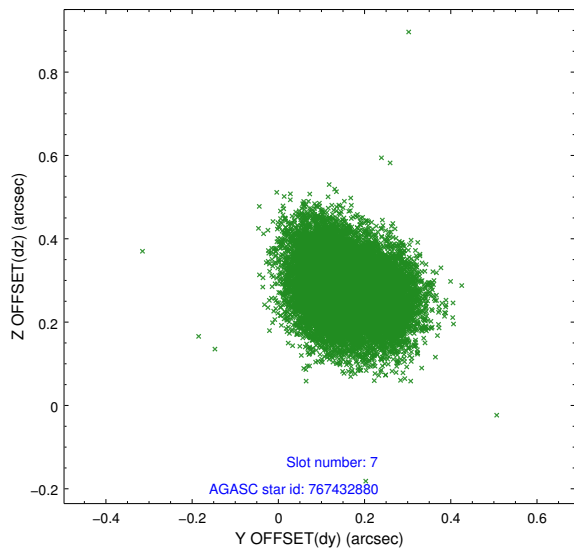
2.4.3 Slot 5



2.4.4 Slot 6

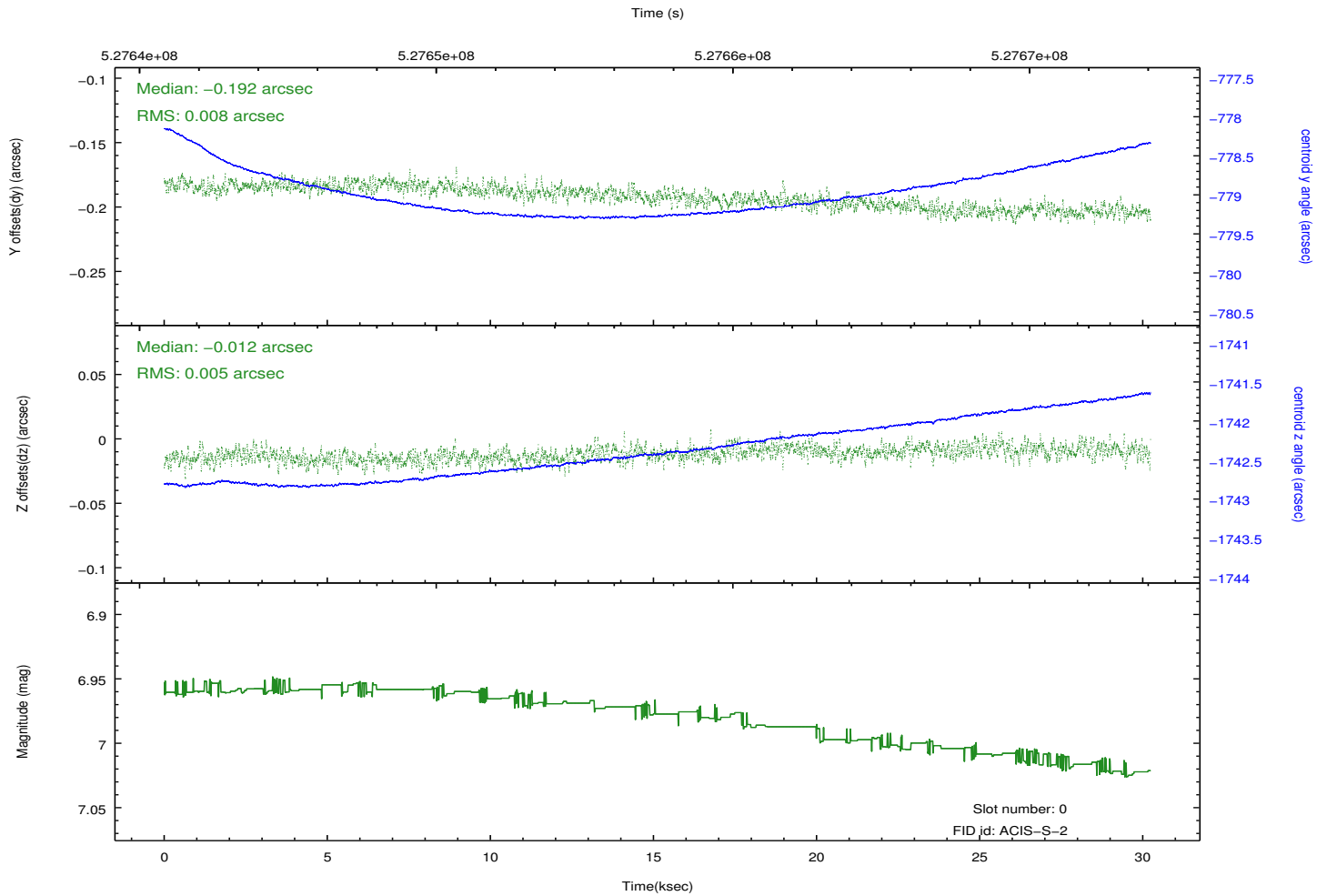
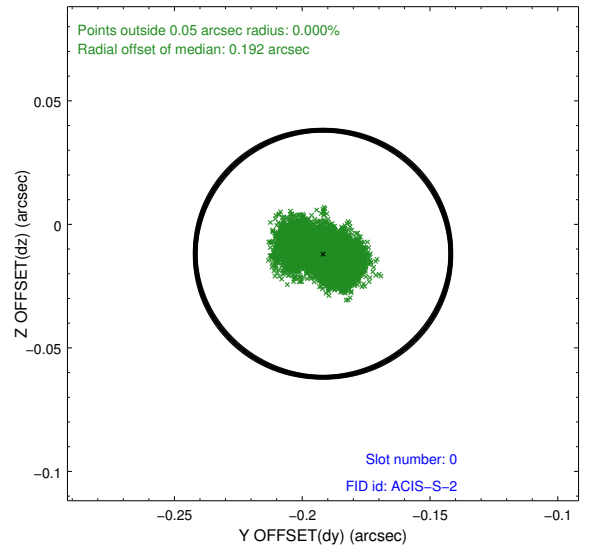
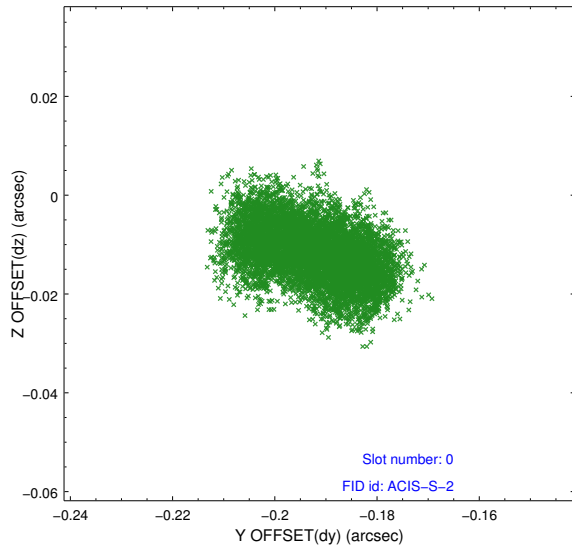


2.4.5 Slot 7

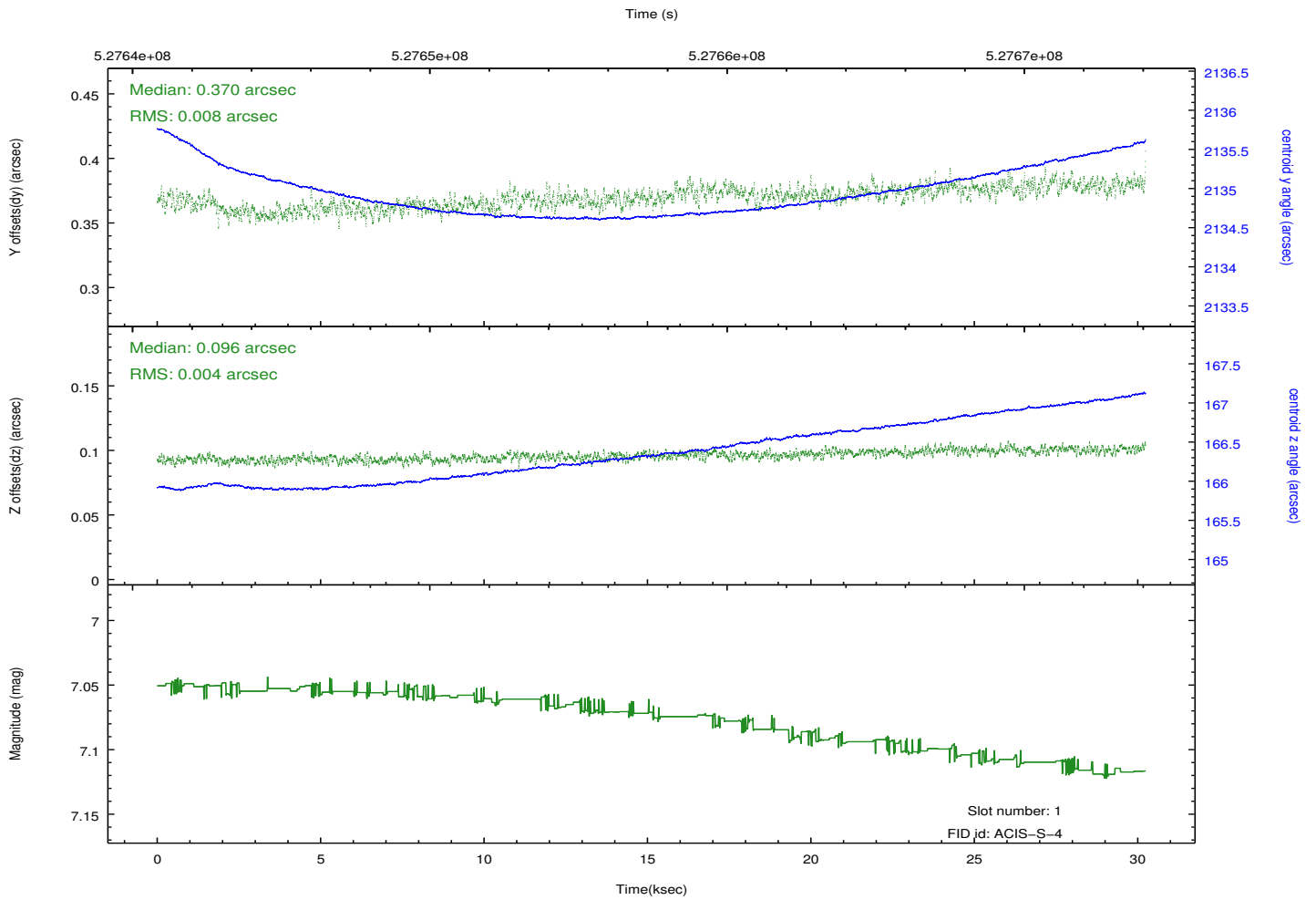
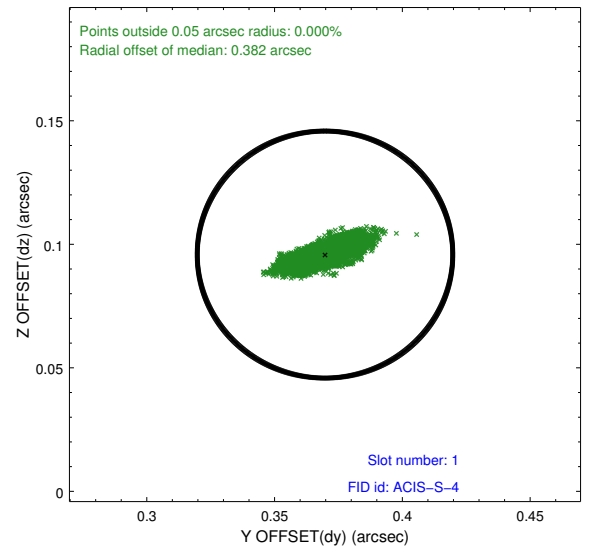
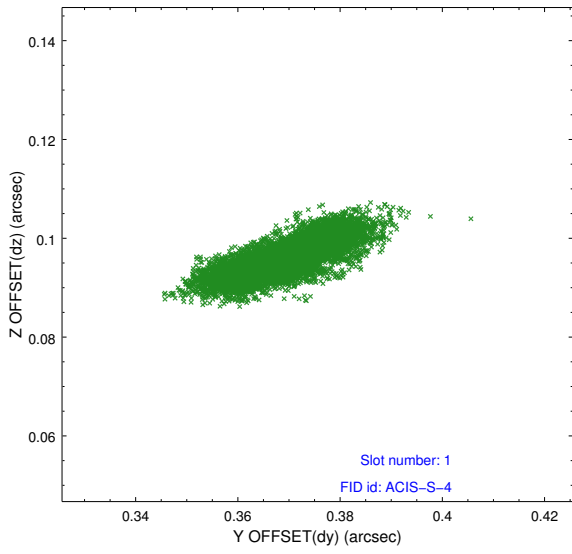


2.5 FID Slots

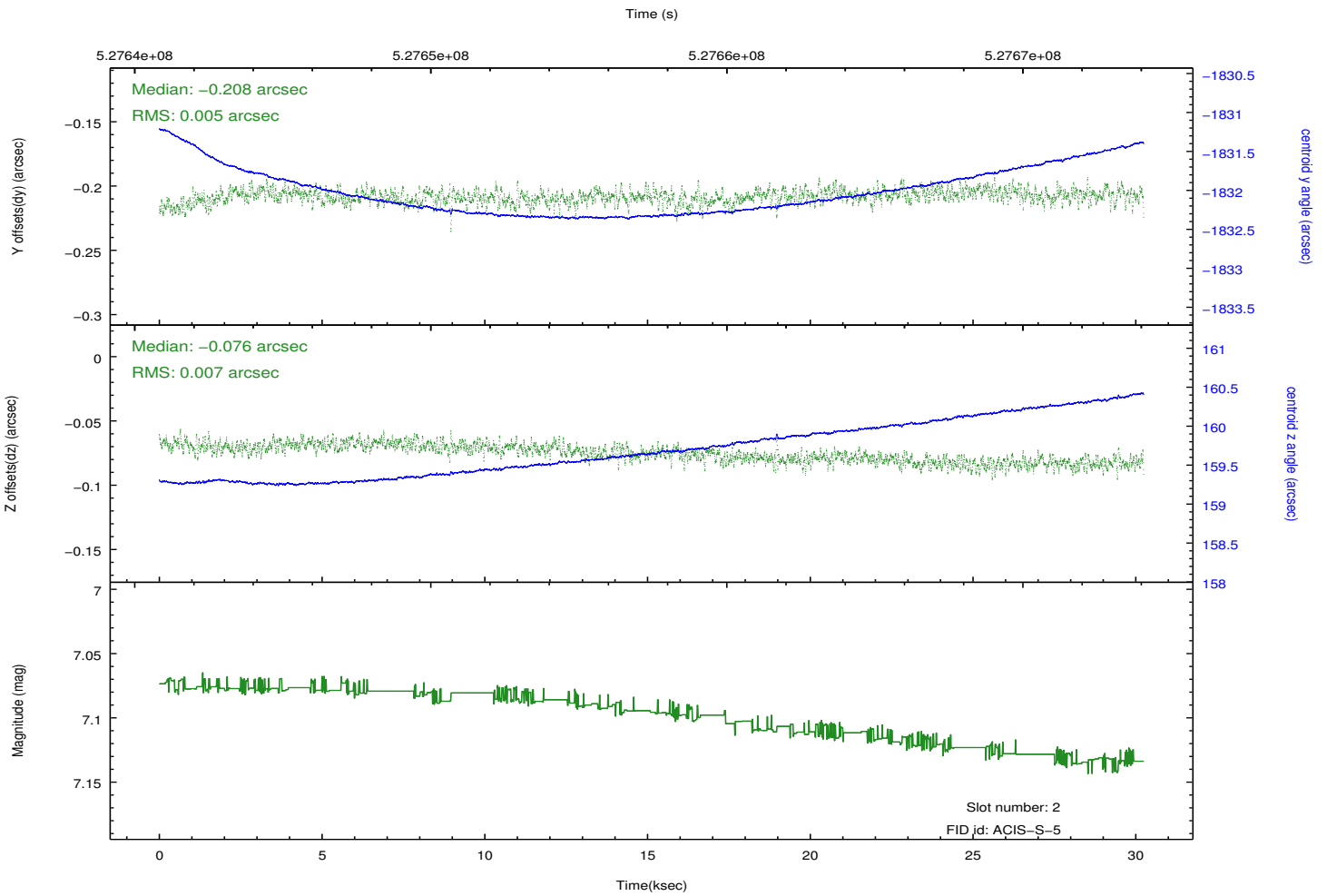
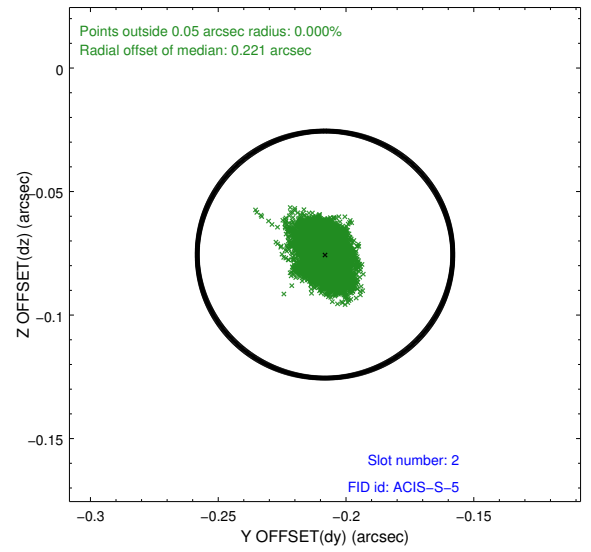
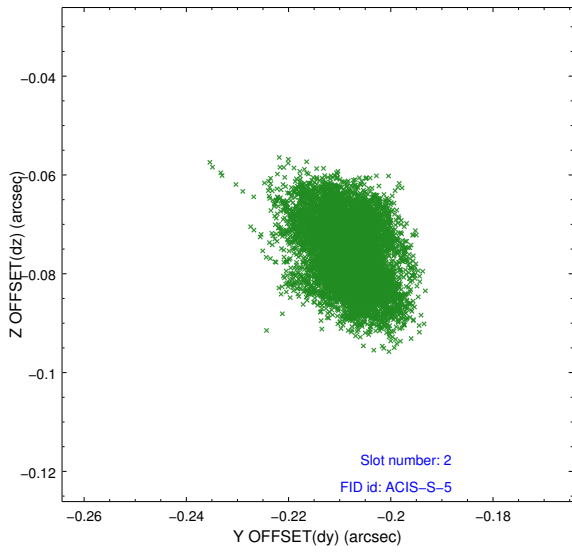
2.5.1 Slot 0



2.5.2 Slot 1



2.5.3 Slot 2



A Summary

A.1 Status

V&V Scientist	Jen Lauer
V&V Date (YYYY-MM-DD)	2014.09.22
V&V Edition	1
V&V Disposition and Status	OK
V&V Charge Time	30.063735369086

A.2 Comments