

V&V Reference Report

L2 ASCDS Version : 10.2.1

Observation 16471 - L2 Version 2
Chandra X-Ray Center

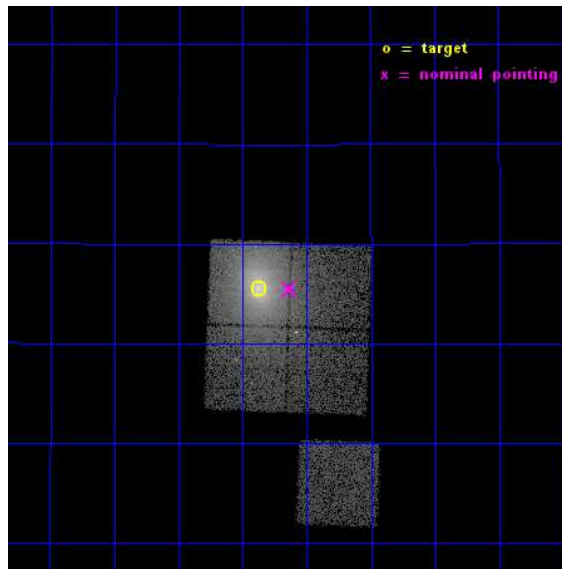
L2 Processing Date : Dec 11 2014

Contents

1	Front	2
2	OBI	3
2.1	OBI	3
2.1.1	Images	3
2.1.2	Bias	3
2.1.3	Parameters	4
2.1.4	Events	4
2.2	Compared Parameters	5
2.3	Aspect	6
2.4	Star Slots	9
2.4.1	Slot 3	9
2.4.2	Slot 4	10
2.4.3	Slot 5	11
2.4.4	Slot 6	12
2.4.5	Slot 7	13
2.5	FID Slots	14
2.5.1	Slot 0	14
2.5.2	Slot 1	15
2.5.3	Slot 2	16
A	Summary	17
A.1	Status	17
A.2	Comments	17

1 Front

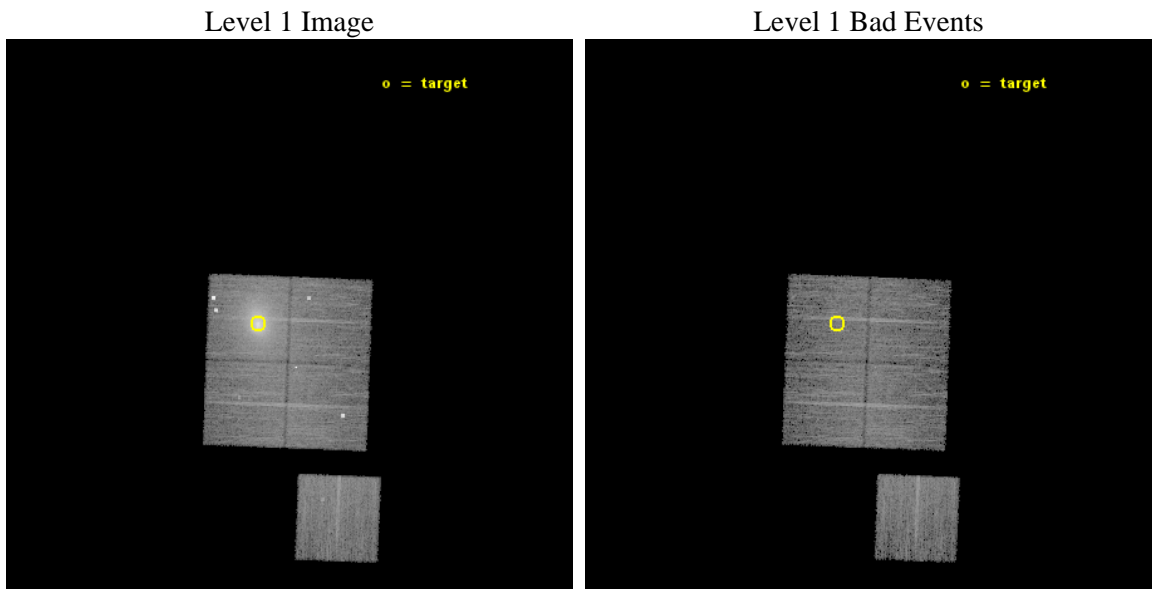
seq_num	890093	Sequence number
obs_id	16471	Observation id
title	AO-15 Calibration Observations of A1795	Proposal title
observer	Dr. CXC Calibration	Principal investigator
object	A1795	Source name
dtcycle	0	
cycle	P	events from which exps? Prim/Second/Both
ra_targ	207.219583	Observer's specified target RA [deg]
dec_targ	26.590833	Observer's specified target Dec [deg]
ra_nom	207.15909452269	Nominal RA [deg]
dec_nom	26.590700958771	Nominal Dec [deg]
roll_nom	182.20373613385	Nominal Roll [deg]
revision	2	Processing version of data
ontime	15084.559055626	Sum of GTIs [s]
livetime	14887.468186474	Livetime [s]
ontime0	15087.700116038	Sum of GTIs [s]
ontime1	15084.559055626	Sum of GTIs [s]
ontime2	15087.700116038	Sum of GTIs [s]
ontime3	15087.700116038	Sum of GTIs [s]
ontime6	15087.700116038	Sum of GTIs [s]
l2events	136999	Number of level 2 events



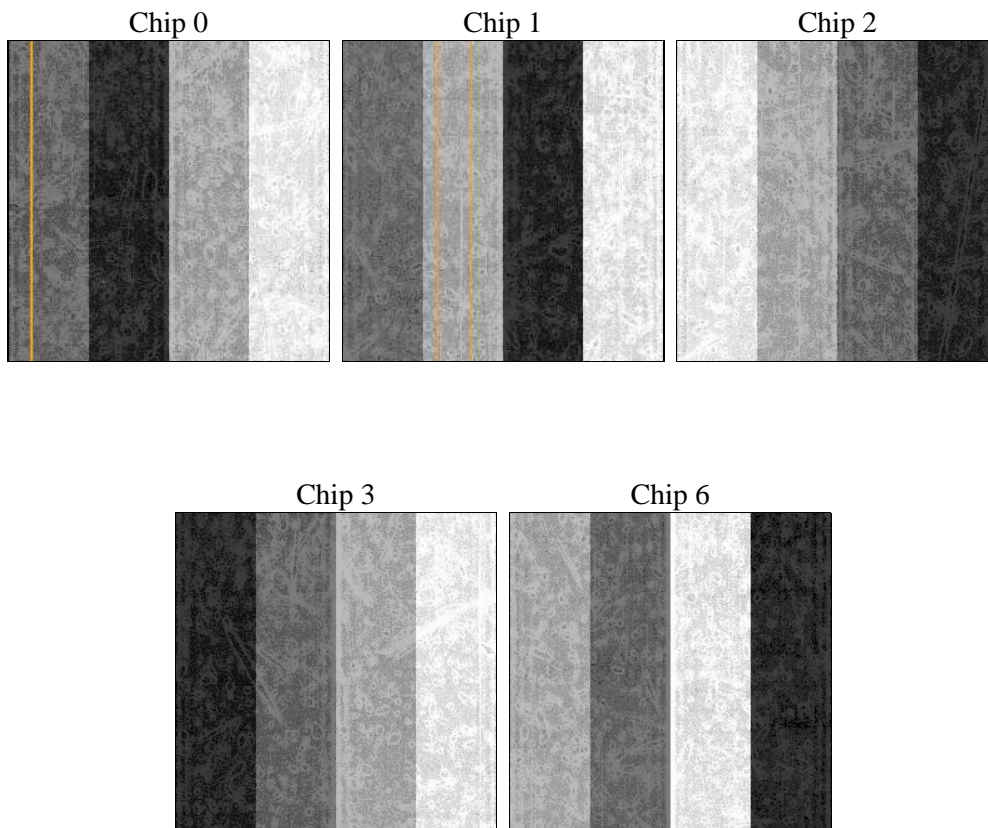
2 OBI

2.1 OBI

2.1.1 Images



2.1.2 Bias



2.1.3 Parameters

obi_num	0	Obi number	sched_exp_time	15000.000000	[s] Scheduled observation exposure time
ascdsver	10.3.1	Processing system revision	ontime	15084.559055626	Sum of GTIs [s]
caldbver	4.6.4	 	ontime0	15087.700116038	Sum of GTIs [s]
date	2014-12-11T10:11:26	Date and time of file creation	ontime1	15084.559055626	Sum of GTIs [s]
revision	2	Processing version of data	ontime2	15087.700116038	Sum of GTIs [s]
			ontime3	15087.700116038	Sum of GTIs [s]
			ontime6	15087.700116038	Sum of GTIs [s]
			l1events	470324	Number of level 1 events

2.1.4 Events

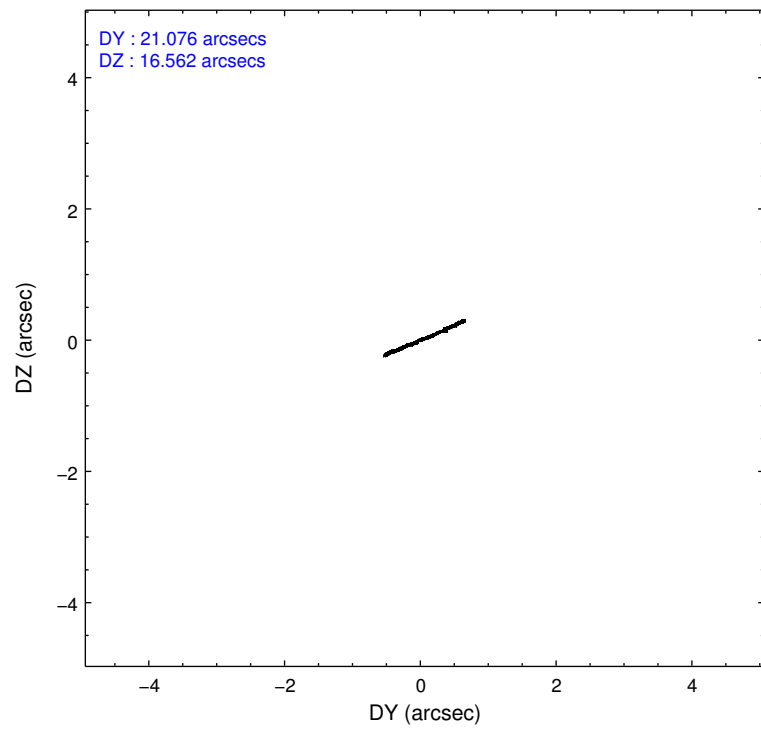
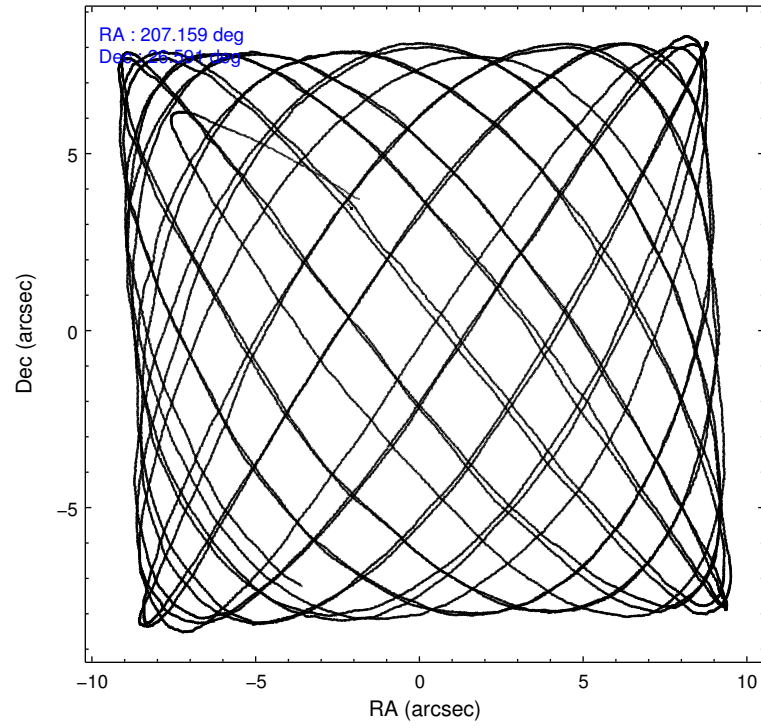
	ccd 0	ccd 1	ccd 2	ccd 3	ccd 6
level 1 events	70155	174939	78694	73679	72857
rejected events	53800	57468	61619	59913	63315
rejected %	76%	32%	78%	81%	86%

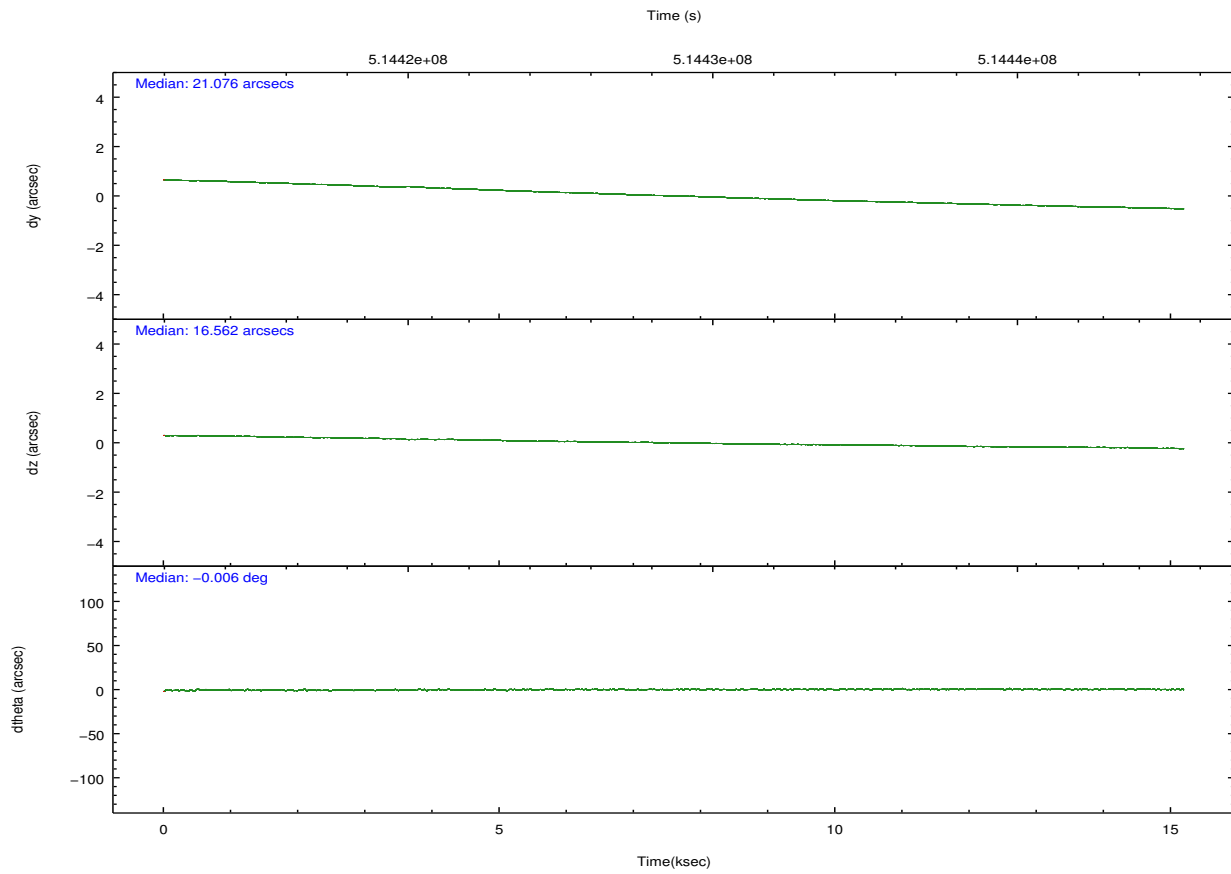
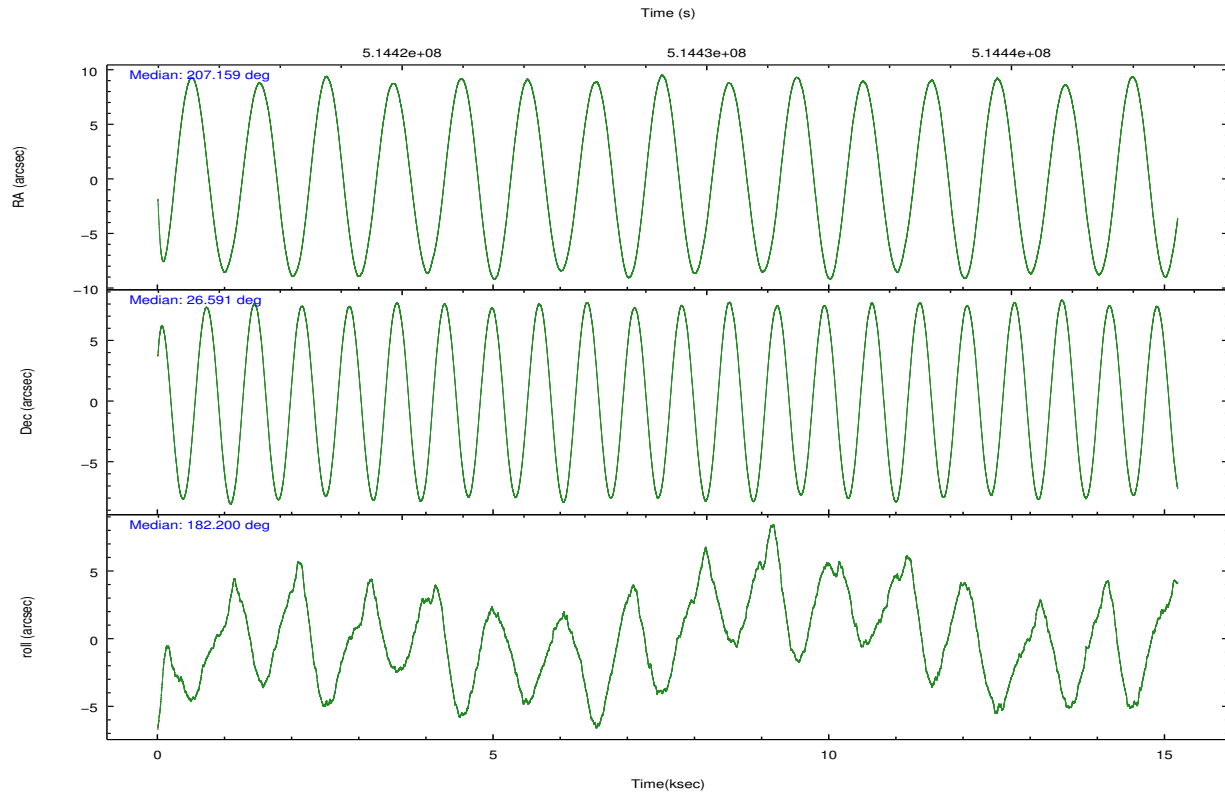
	ccd 0	ccd 1	ccd 2	ccd 3	ccd 6
grade 0 events	9830	88200	10990	7579	3784
	14%	50%	13%	10%	5%
grade 1 events	54	327	91	71	48
	0%	0%	0%	0%	0%
grade 2 events	2711	17123	2580	2437	2095
	3%	9%	3%	3%	2%
grade 3 events	988	3914	870	1002	811
	1%	2%	1%	1%	1%
grade 4 events	969	3730	1058	998	859
	1%	2%	1%	1%	1%
grade 5 events	3266	3725	3004	3734	3478
	4%	2%	3%	5%	4%
grade 6 events	1862	4532	1581	1755	1994
	2%	2%	2%	2%	2%
grade 7 events	50475	53388	58520	56103	59788
	71%	30%	74%	76%	82%

2.2 Compared Parameters

Parameter	Planned	Actual	Parameter	Planned	Actual
Instrument	ACIS	ACIS	Obspar format version number	7	7
Detector	ACIS-01236	ACIS-01236	Obspar file type	PREDICTED	ACTUAL
Grating	NONE	NONE	Obspar update status	NONE	UPDATED
Data mode	VFAINT	VFAINT	Number of optional ACIS chips dropped	0	0
Observation mode	POINTING	POINTING	On-chip summing requested	N	N
[deg] Pointing RA	207.185073	207.1590945226886	Subarray requested	NONE	NONE
[deg] Pointing Dec	26.605444	26.59070095877086	Alternating exposures requested	N	N
[deg] Pointing Roll	181.983420	182.2037361338517	[s] Primary exposure time	0.000000	3.1
[s] Window start time (MET)	512697667.184000	512697667.184000			
[s] Window stop time (MET)	515203267.184000	515203267.184000			
[mm] SIM focus pos	-0.782348	-0.7809083437167272			
[mm] SIM defocus	0	0.001439871863259334			
[mm] SIM translation stage pos	-246.722463	-246.7222175961781			
[mm] SIM translation stage offset	13.13	13.12976459324844			
[s] Observation start time (MET)	514421956.184000	514421013.40453			
Observation start date	2014-04-20T22:58:09	2014-04-20T22:43:33			
[s] Observation end time (MET)	514436956.184000	514437830.58046			
Observation end date	2014-04-21T03:08:09	2014-04-21T03:23:50			
Read mode	TIMED	TIMED			

2.3 Aspect





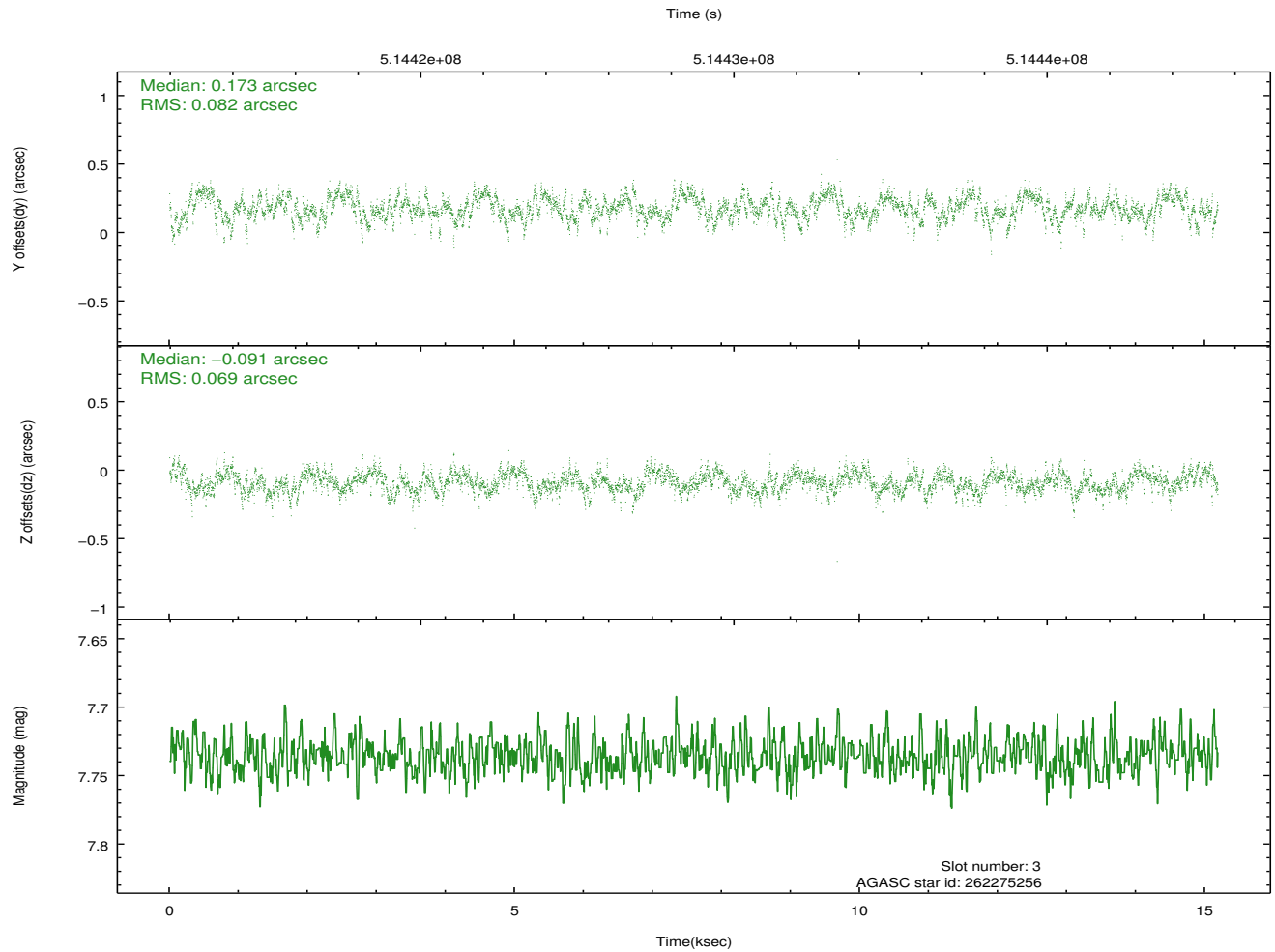
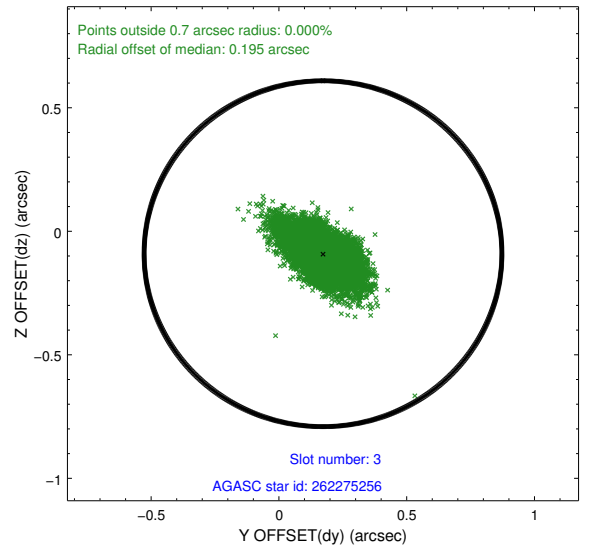
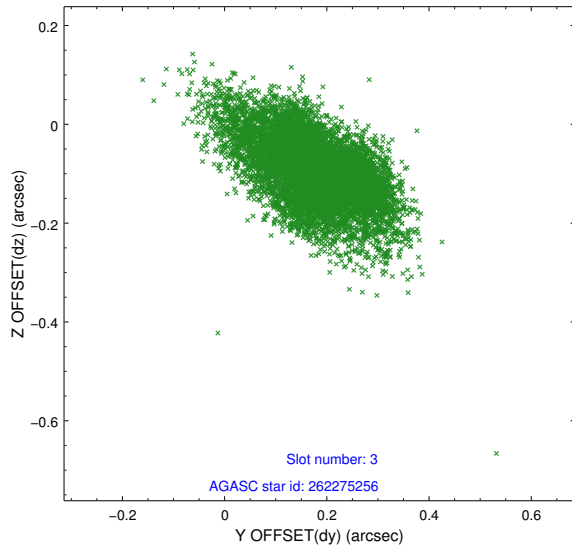
Slot Statistics

slot	status	used	id	mag	n_pts	med_dy	med_dz	dr1	dr2	ra	dec	mean_y	mean_z
0	FID		ACIS-I-1	7.19	3705	-0.048	0.153	0.013	0.025	0.000000	0.000000	918.43	-570.17
1	FID		ACIS-I-5	7.14	3705	-0.160	-0.002	0.007	0.012	0.000000	0.000000	-1829.77	1326.87
2	FID		ACIS-I-6	7.11	3705	0.116	-0.081	0.010	0.019	0.000000	0.000000	383.62	1971.79
3	GUIDE	used	262275256	7.74	7410	0.173	-0.091	0.110	0.190	206.467522	27.226414	2218.96	-2319.83
4	GUIDE	used	262407608	9.35	7405	0.008	-0.077	0.156	0.257	207.378401	26.435507	-601.13	632.52
5	GUIDE	used	262408096	9.34	7401	-0.152	-0.159	0.123	0.196	207.011678	26.515421	570.14	304.27
6	GUIDE	used	262408512	8.00	7410	-0.060	0.187	0.061	0.095	207.800210	27.128796	-2034.50	-1819.13
7	GUIDE	used	262409552	8.18	7406	0.030	0.129	0.097	0.155	206.584269	27.192805	1849.97	-2183.83

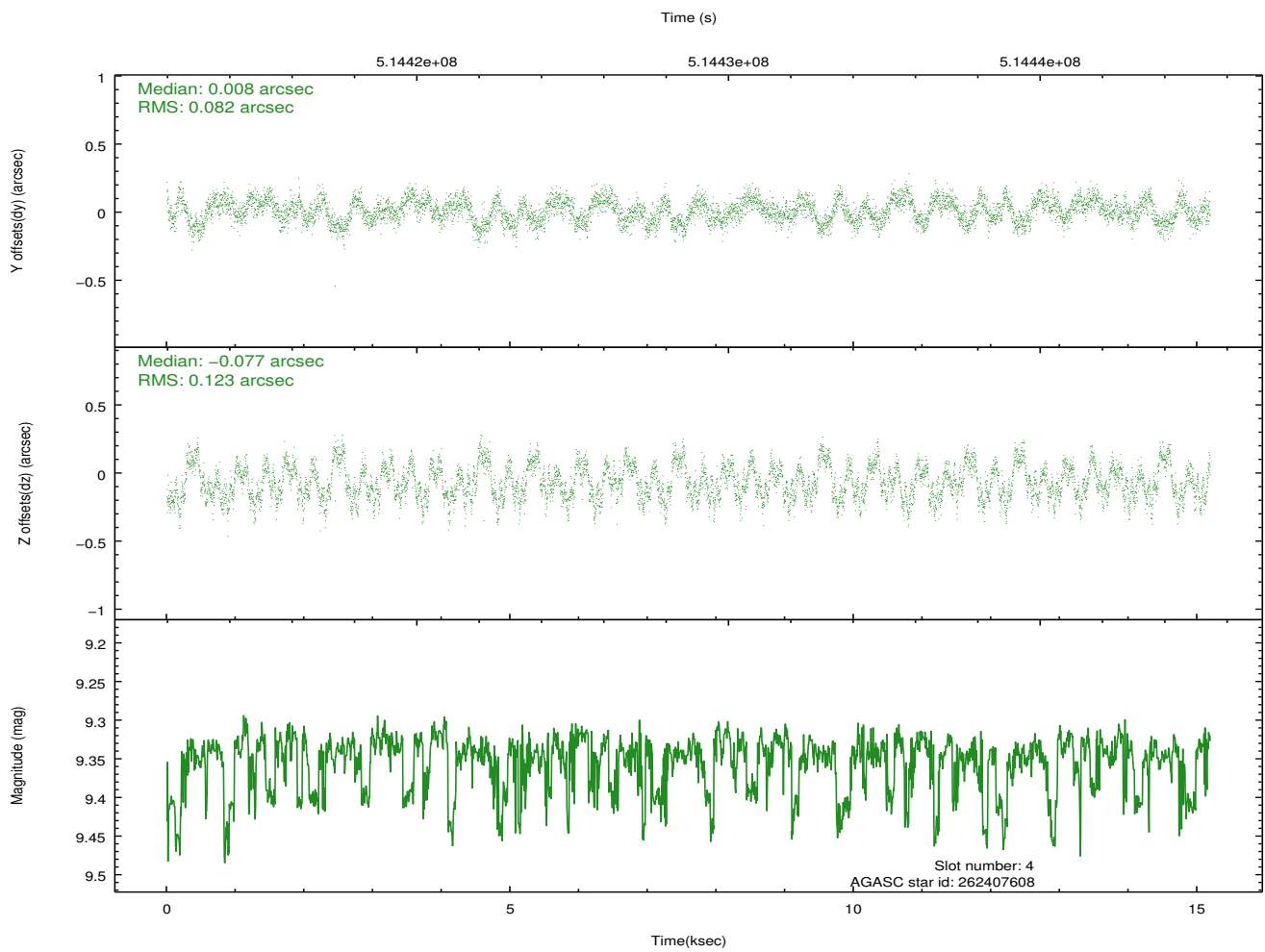
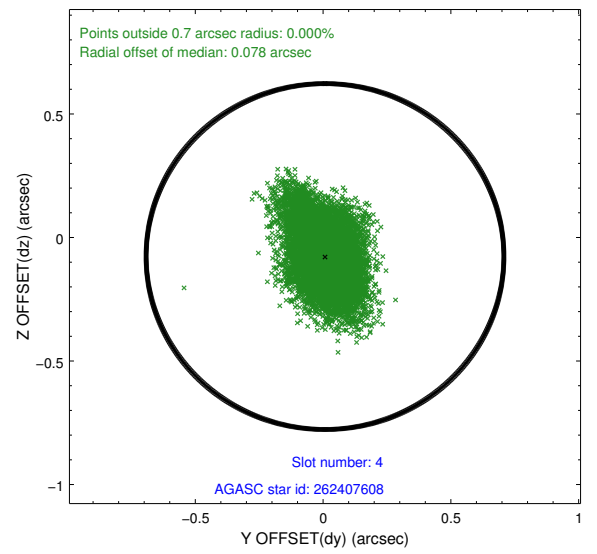
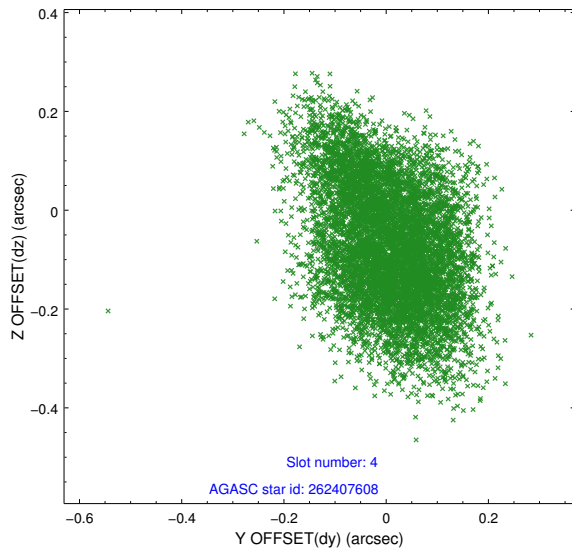
∞

2.4 Star Slots

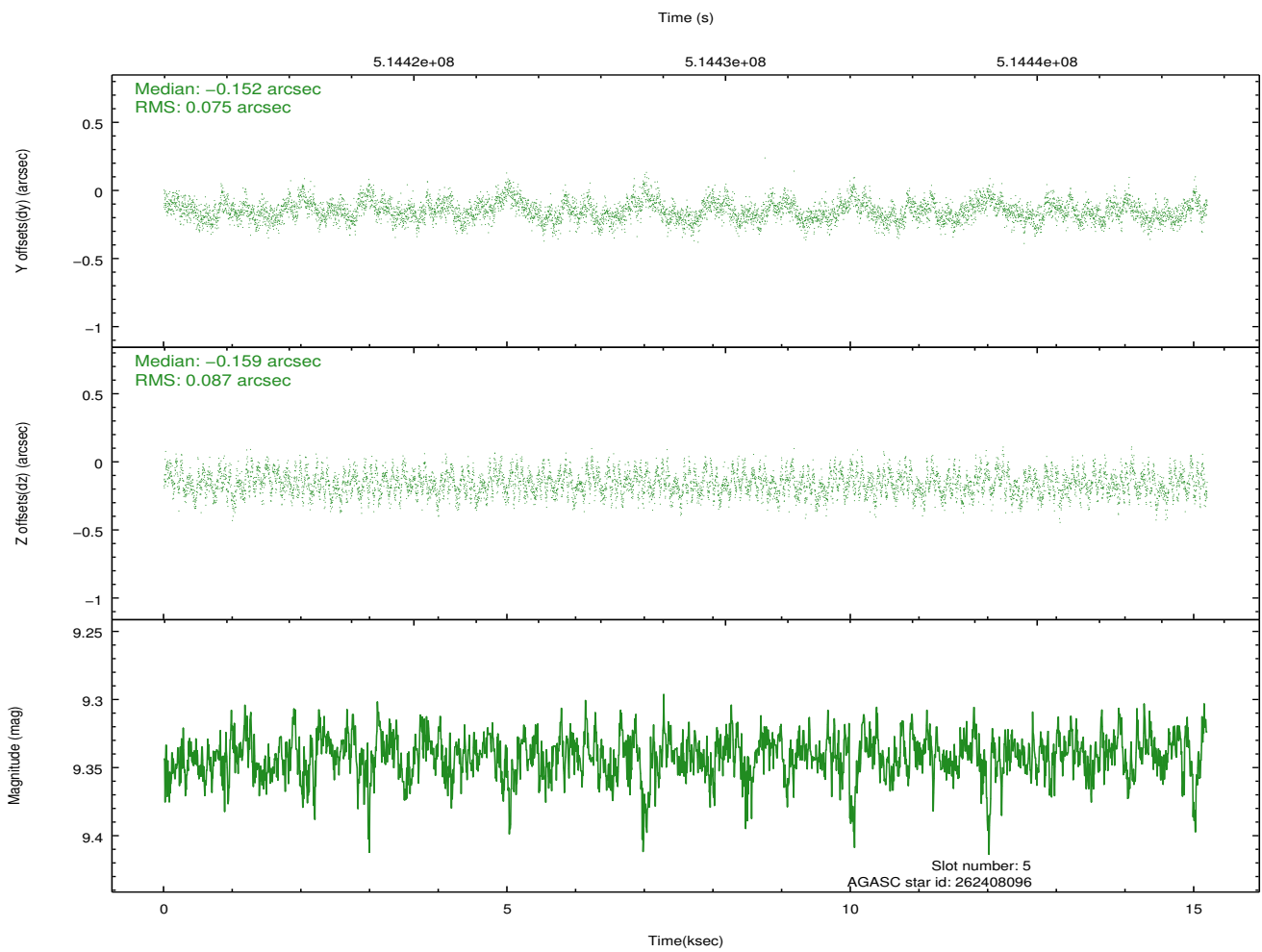
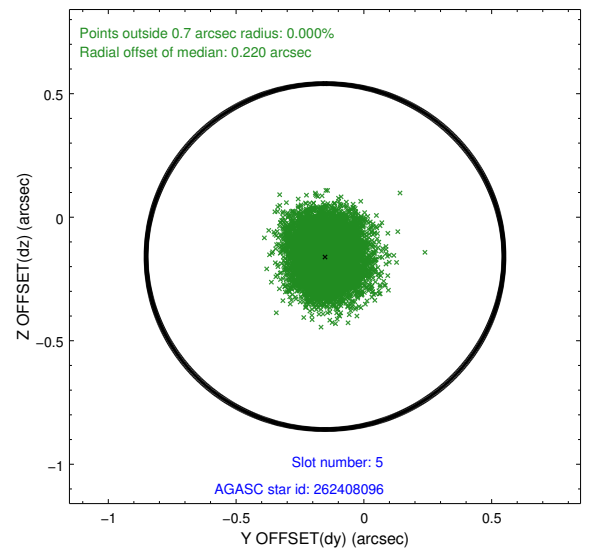
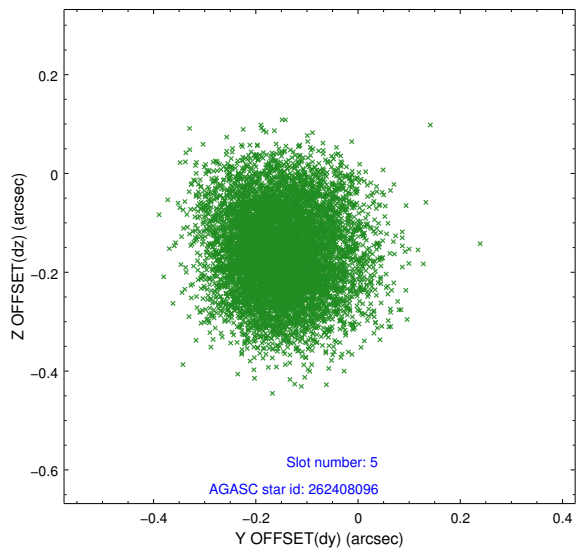
2.4.1 Slot 3



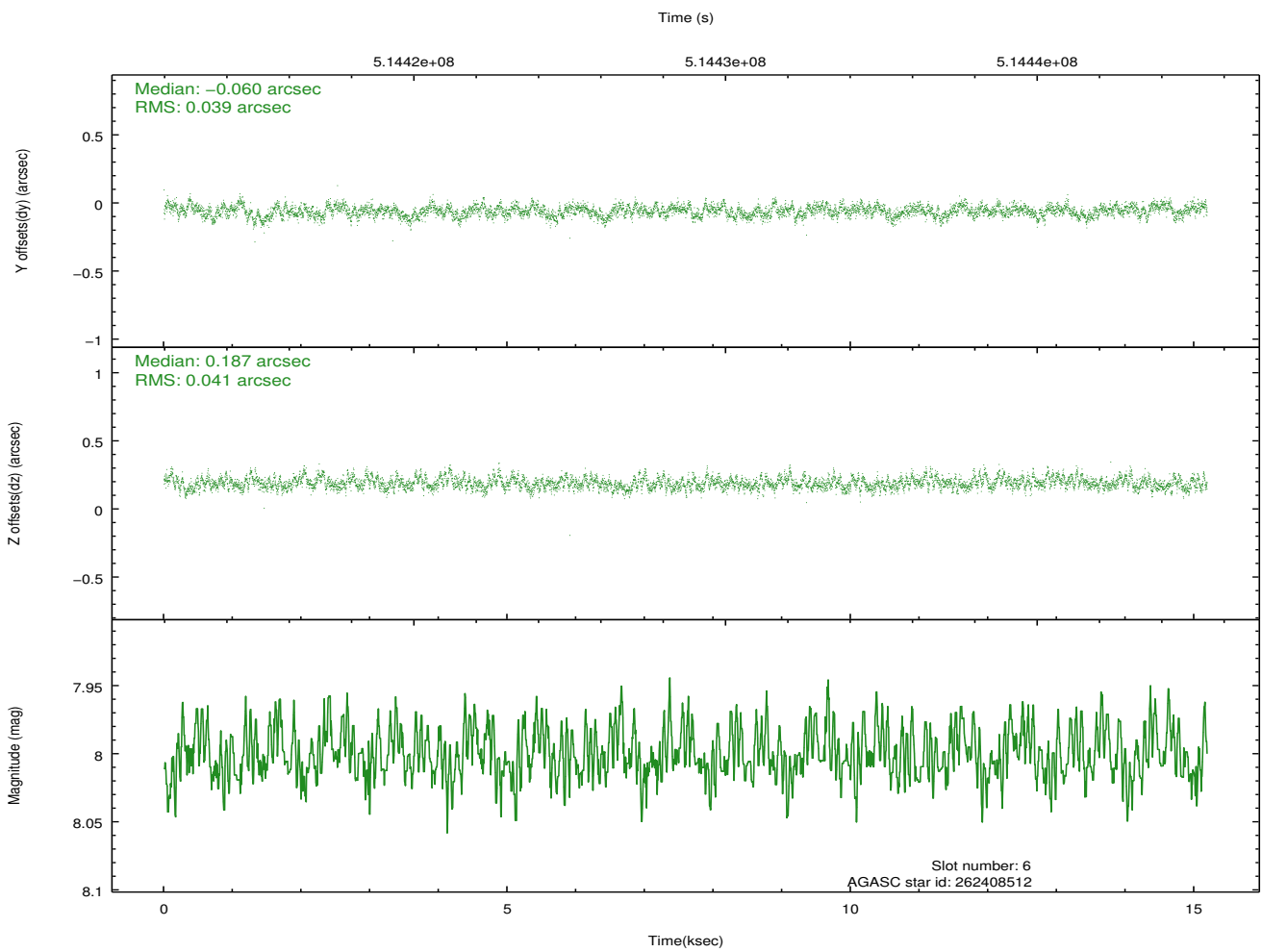
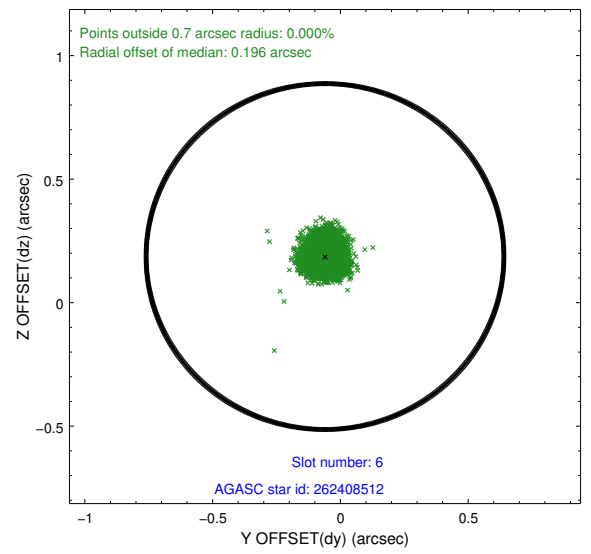
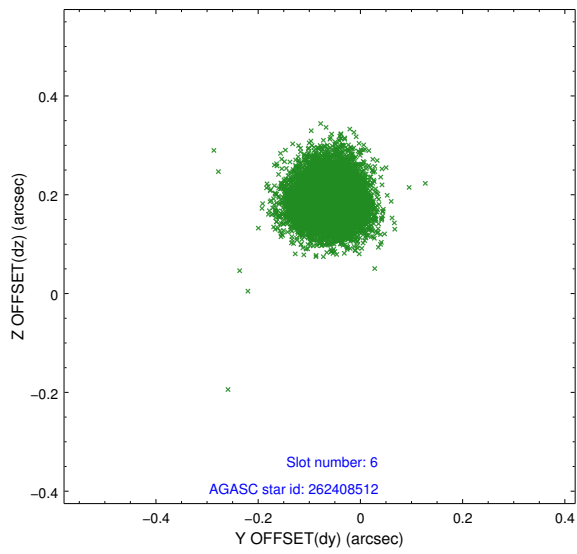
2.4.2 Slot 4



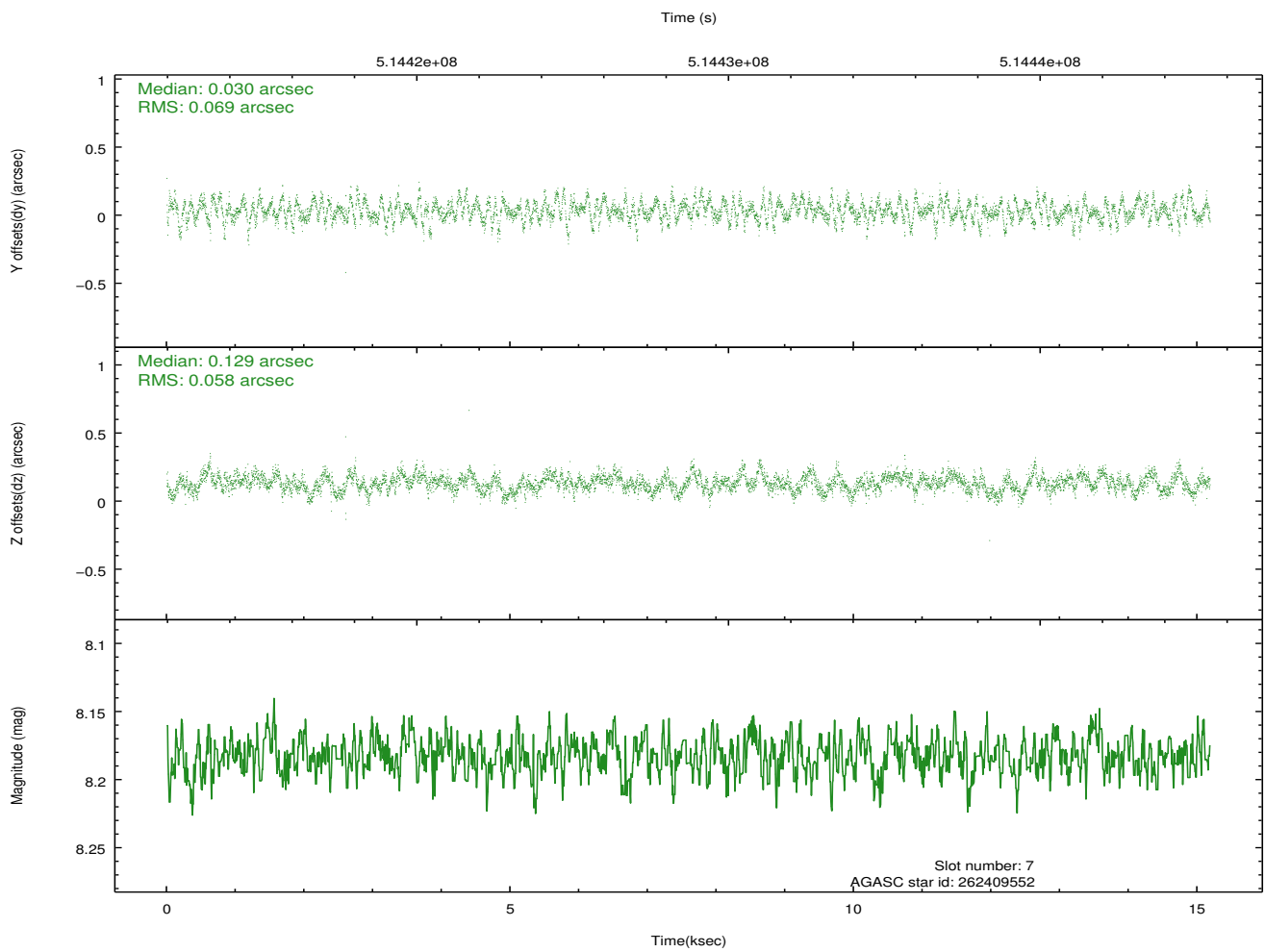
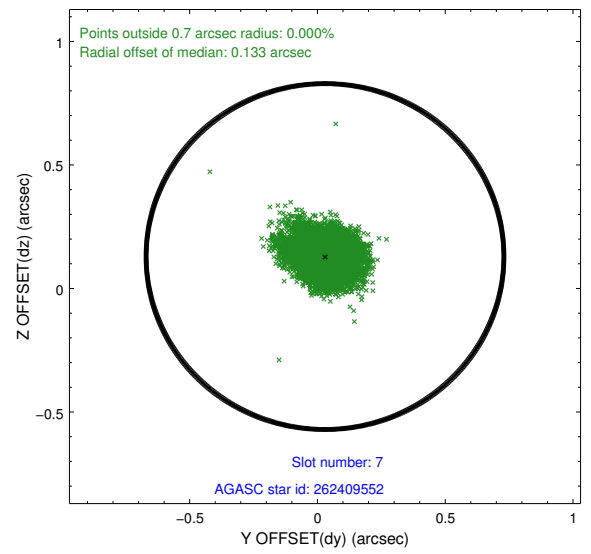
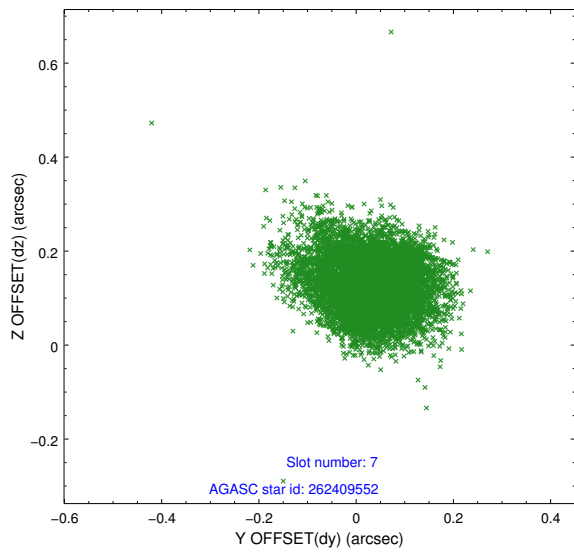
2.4.3 Slot 5



2.4.4 Slot 6

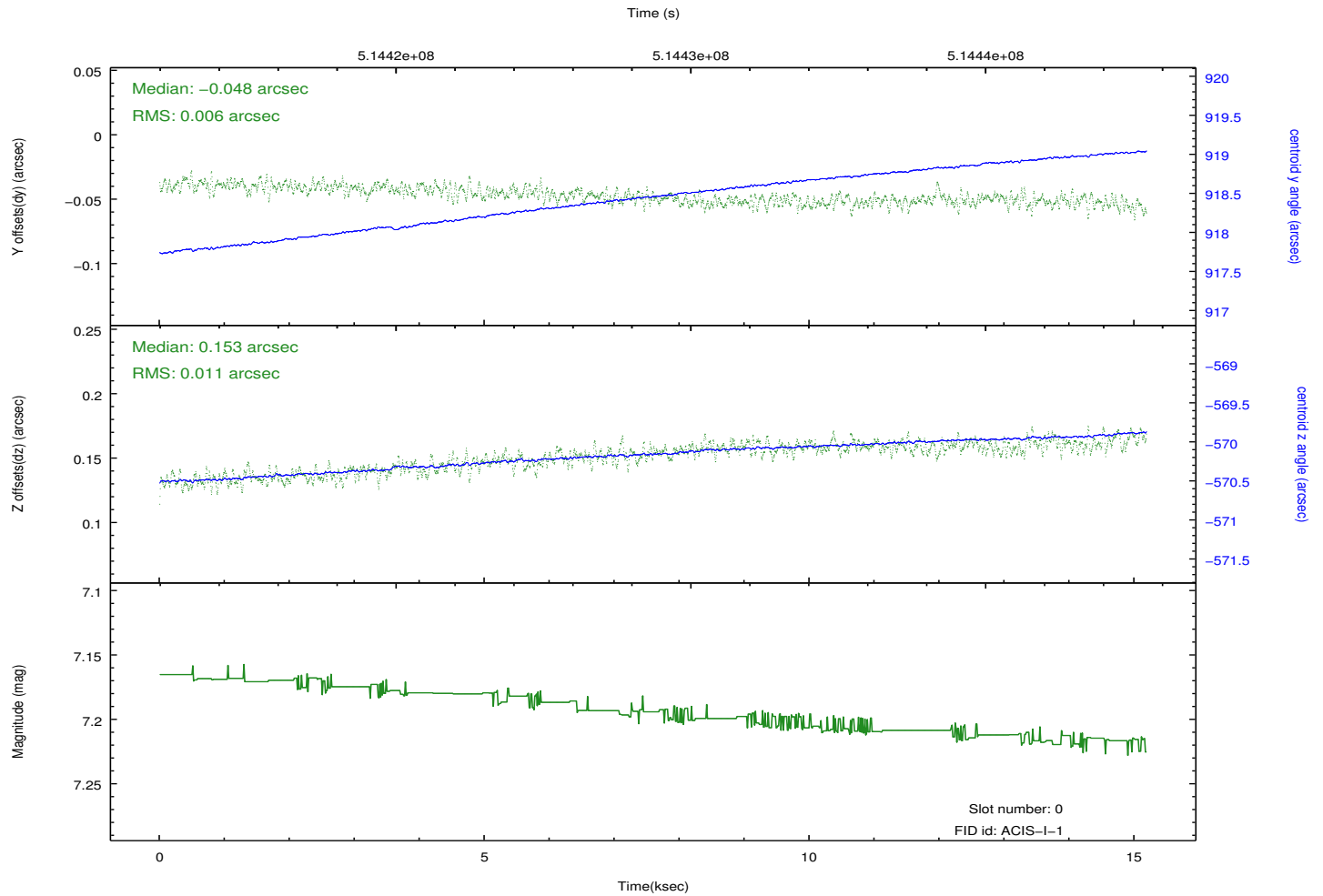
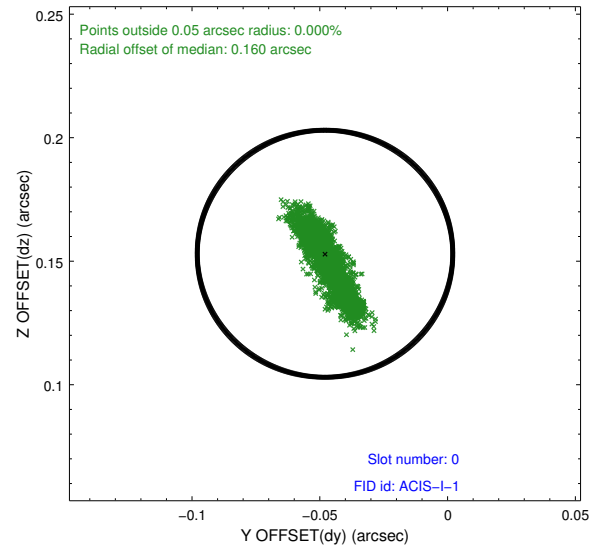
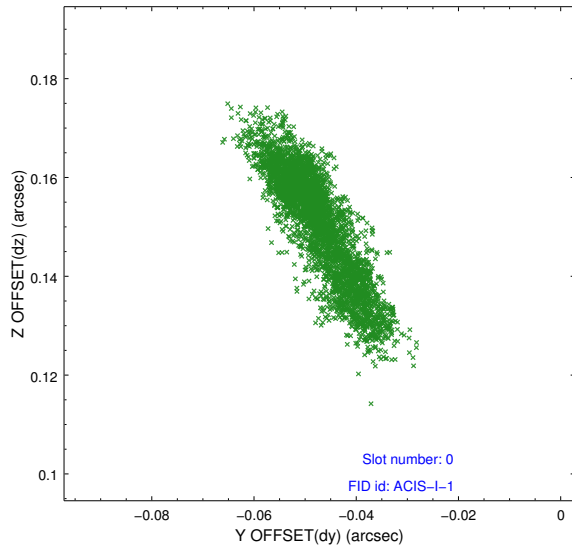


2.4.5 Slot 7

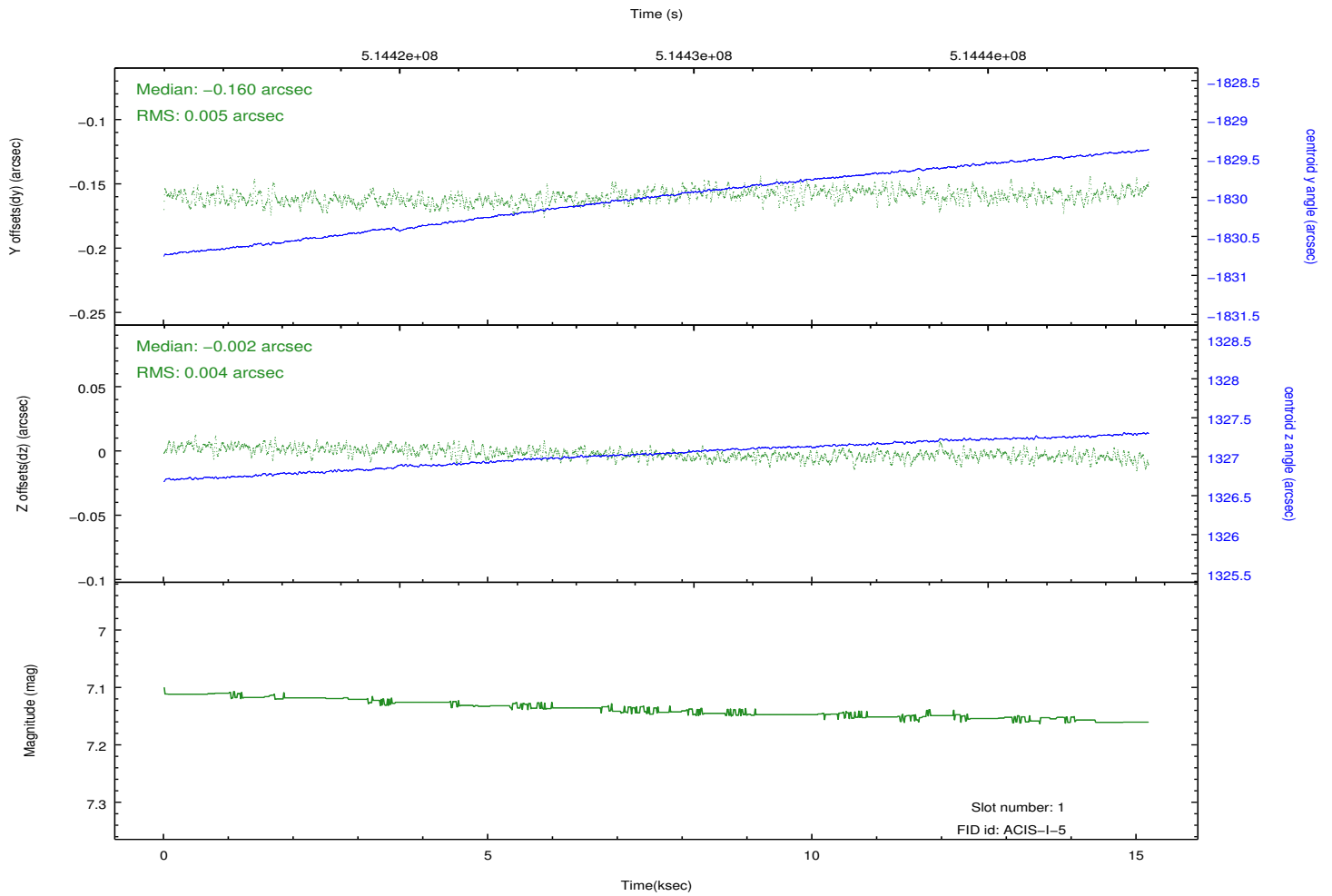
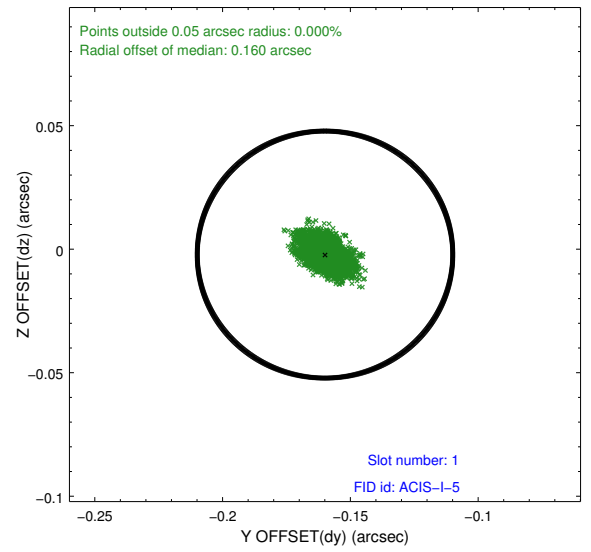
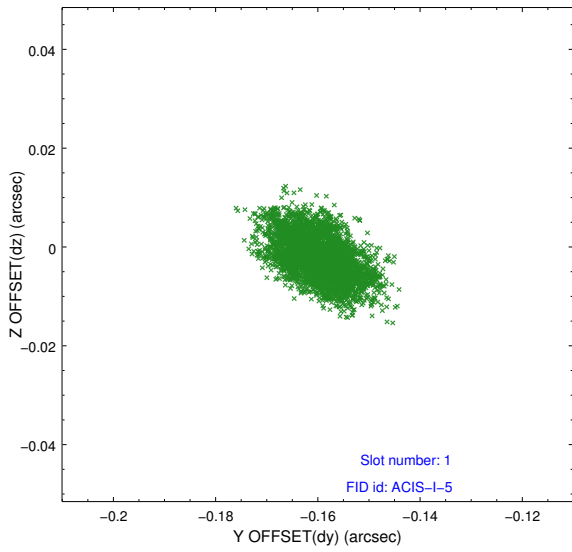


2.5 FID Slots

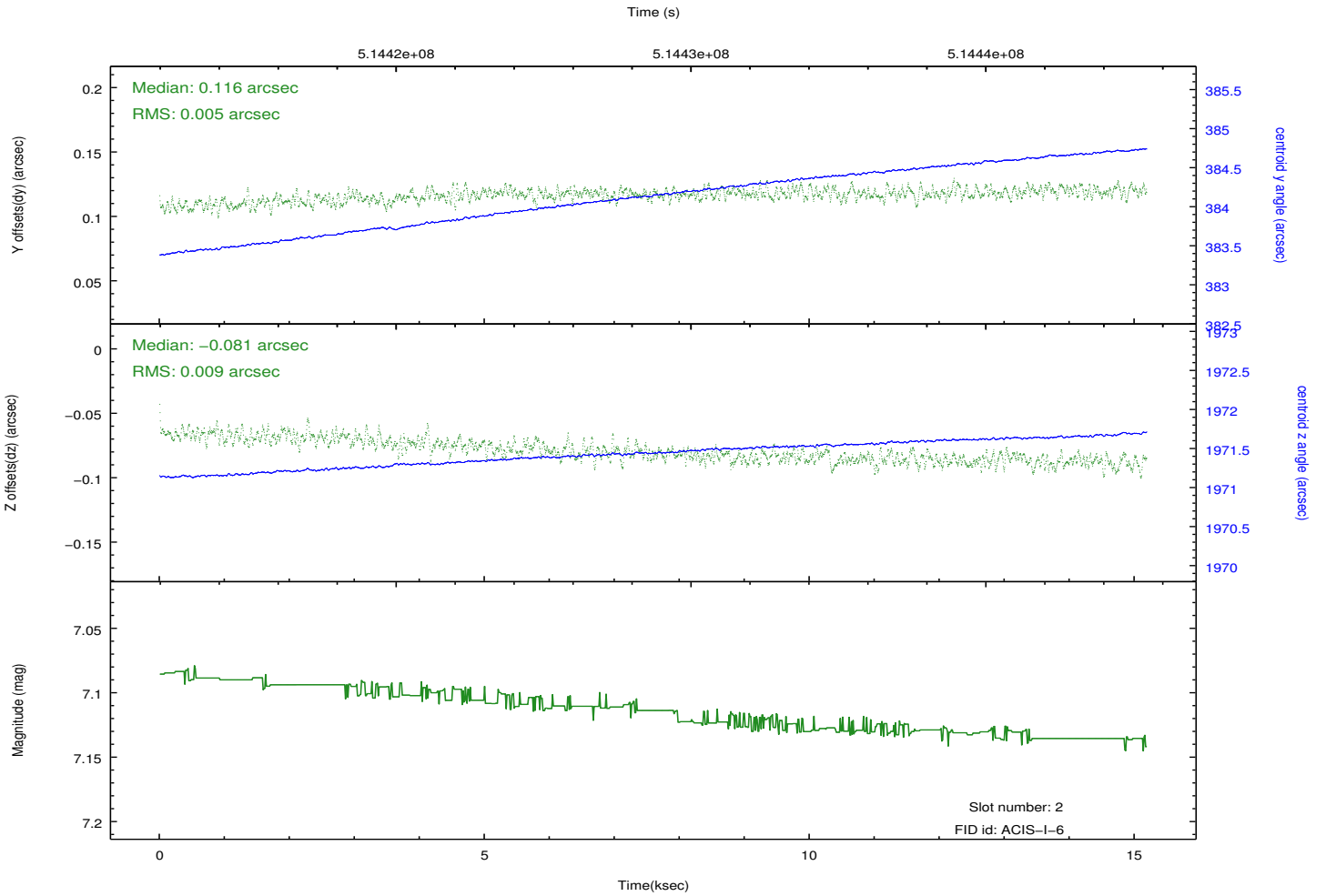
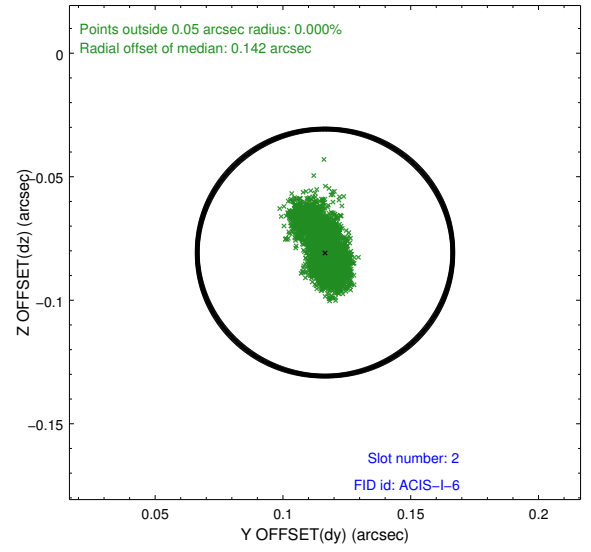
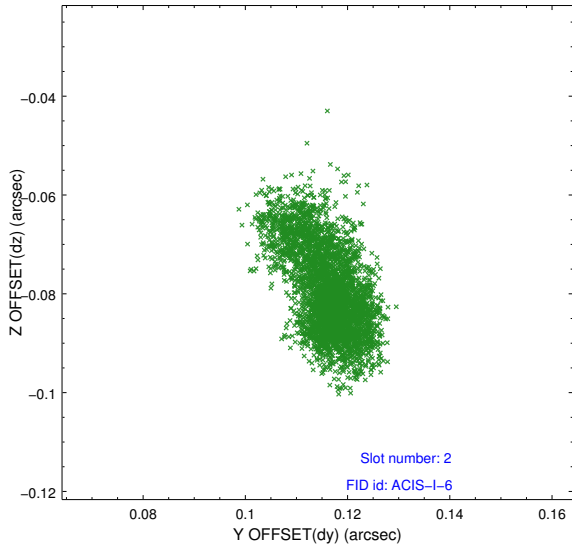
2.5.1 Slot 0



2.5.2 Slot 1



2.5.3 Slot 2



A Summary

A.1 Status

V&V Scientist	Beth Sundheim
V&V Date (YYYY-MM-DD)	2014.12.18
V&V Edition	1
V&V Disposition and Status	OK
V&V Charge Time	15.084559055626

A.2 Comments

Window preference met.

These data have been reprocessed with new aspect alignment calibration files that correct small mean offsets (up to 0.4 arcsecs) and improve overall astrometric accuracy. The new calibration was determined using data from the time period being reprocessed and was performed using cross-correlation of X-ray sources with radio and optical counterparts.