

V&V Reference Report

L2 ASCDS Version : 10.2.4

Observation 17531 - L2 Version 1
Chandra X-Ray Center

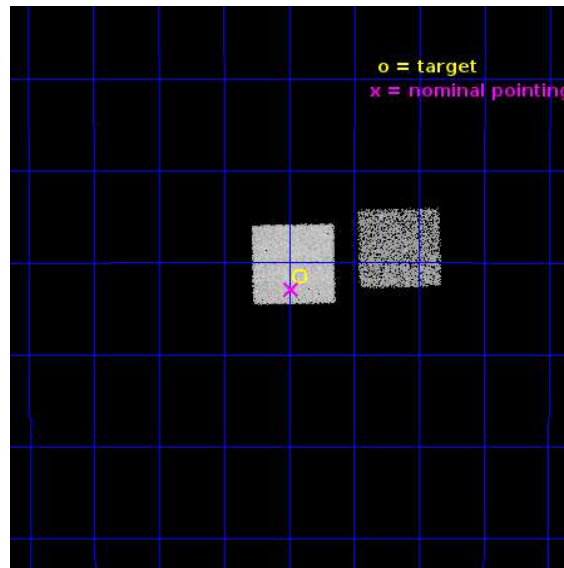
L2 Processing Date : Oct 20 2014

Contents

1	Front	2
2	OBI	3
2.1	OBI	3
2.1.1	Images	3
2.1.2	Bias	3
2.1.3	Parameters	4
2.1.4	Events	4
2.2	Compared Parameters	5
2.3	Aspect	6
2.4	Star Slots	9
2.4.1	Slot 3	9
2.4.2	Slot 4	10
2.4.3	Slot 5	11
2.4.4	Slot 6	12
2.4.5	Slot 7	13
2.5	FID Slots	14
2.5.1	Slot 0	14
2.5.2	Slot 1	15
2.5.3	Slot 2	16
A	Summary	17
A.1	Status	17
A.2	Comments	17

1 Front

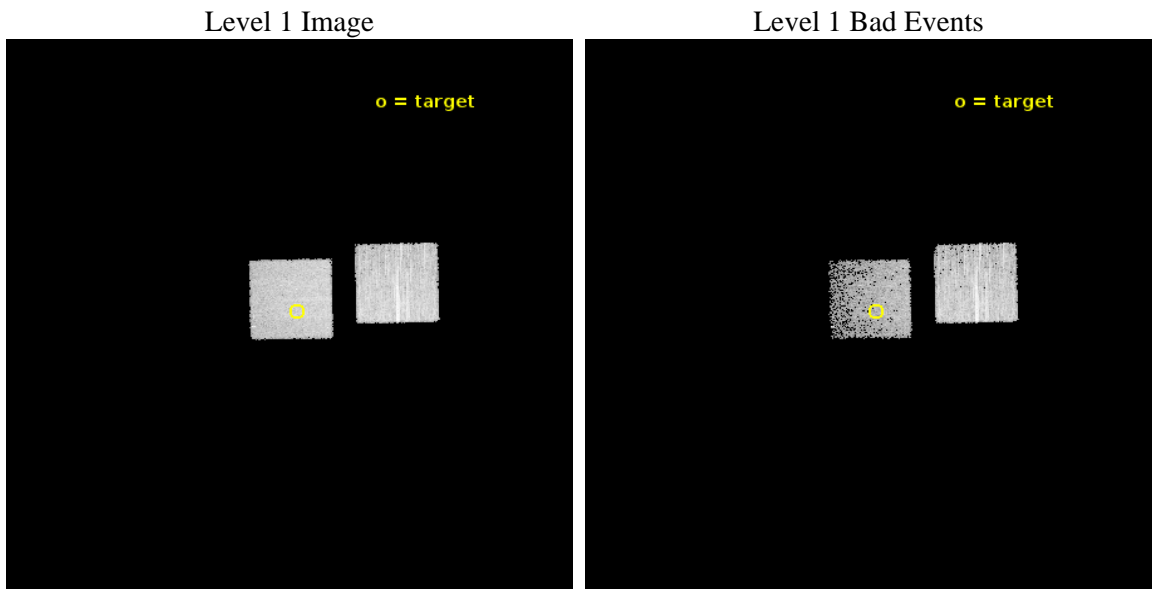
seq_num	100152	Sequence number
obs_id	17531	Observation id
title	Chandra Observations of Comet C/2013 A1 (Siding Spring)'s Encounter With Mars	Proposal title
observer	Dr. Carey Lisse	Principal investigator
object	Comet C/2013 A1 Siding Spring	Source name
dtcycle	0	
cycle	P	events from which exps? Prim/Second/Both
ra_targ	264.3552	Observer's specified target RA [deg]
dec_targ	-24.8579	Observer's specified target Dec [deg]
ra_nom	264.37023684703	Nominal RA [deg]
dec_nom	-24.881863973987	Nominal Dec [deg]
roll_nom	268.85329082677	Nominal Roll [deg]
revision	1	Processing version of data
ontime	14580.0	Sum of GTIs [s]
livetime	14383.237313551	Livetime [s]
ontime3	14580.0	Sum of GTIs [s]
ontime7	14580.0	Sum of GTIs [s]
l2events	32700	Number of level 2 events



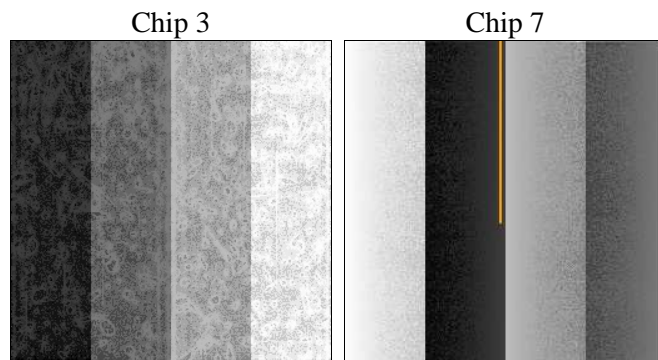
2 OBI

2.1 OBI

2.1.1 Images



2.1.2 Bias



2.1.3 Parameters

obi_num	1	Obi number	sched_exp_time	14400.000000	[s] Scheduled observation exposure time
ascdsver	10.2.4	Processing system revision	ontime	14580.0	Sum of GTIs [s]
caldbver	4.6.3	 	ontime3	14580.0	Sum of GTIs [s]
date	2014-10-20T11:41:38	Date and time of file creation	ontime7	14580.0	Sum of GTIs [s]
revision	1	Processing version of data	ll events	109388	Number of level 1 events

2.1.4 Events

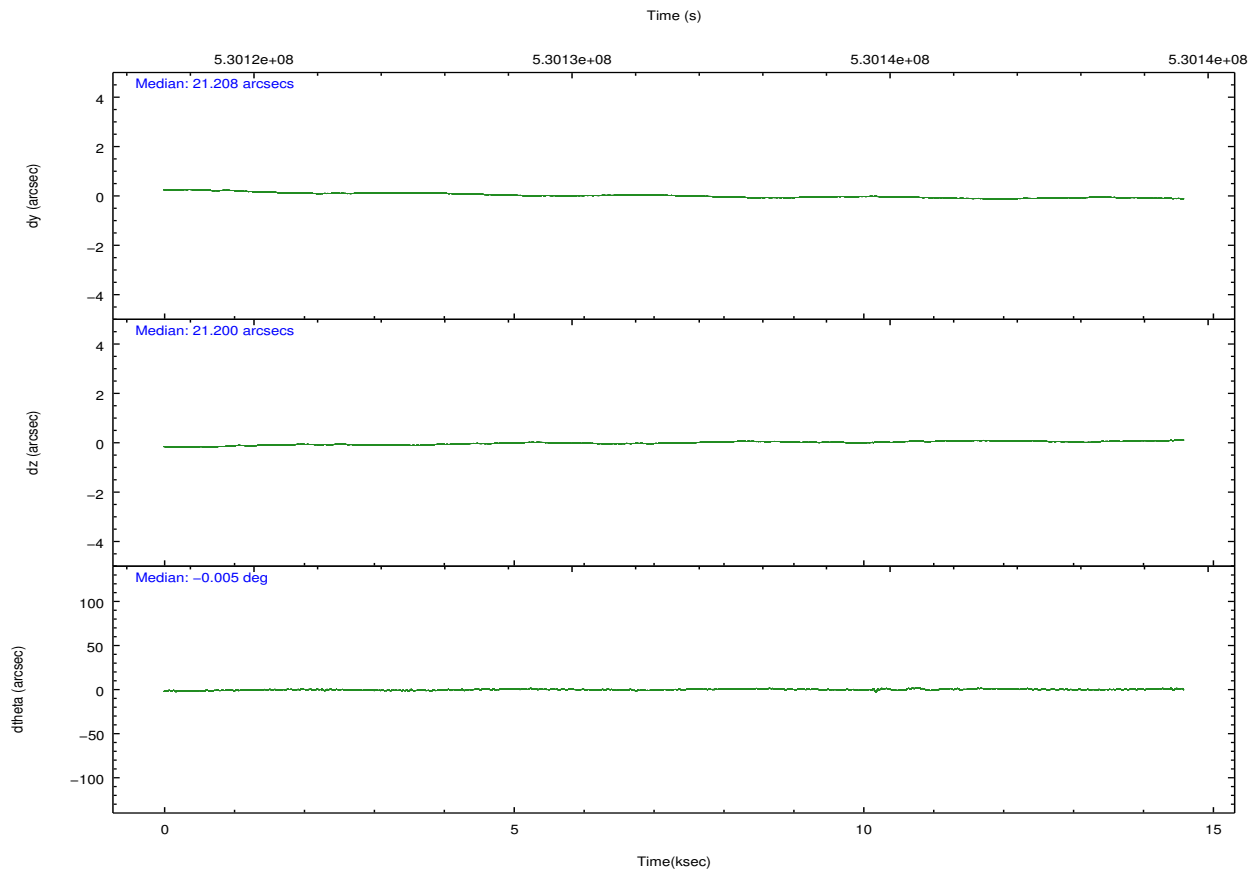
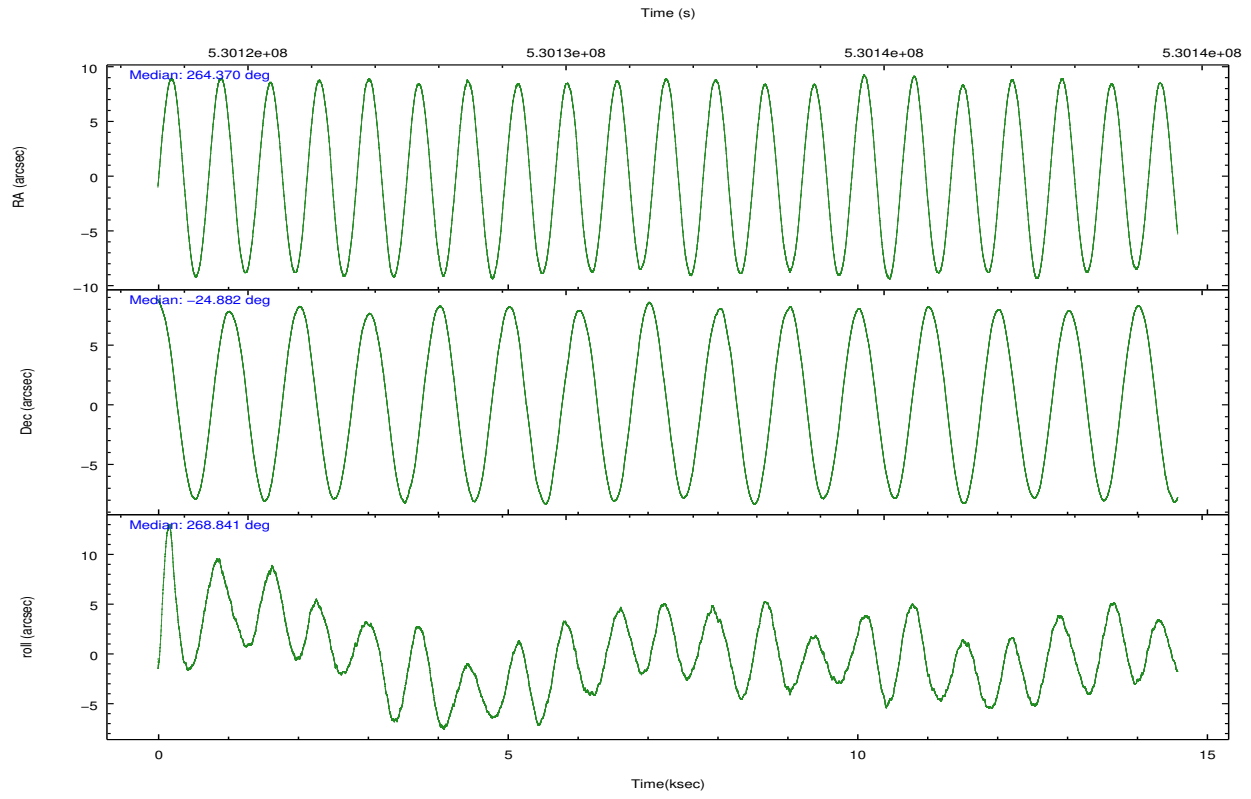
	ccd 3	ccd 7
level 1 events	60530	48858
rejected events	53623	21493
rejected %	88%	43%

	ccd 3	ccd 7
grade 0 events	2996	3650
	4%	7%
grade 1 events	28	147
	0%	0%
grade 2 events	1494	6702
	2%	13%
grade 3 events	705	2740
	1%	5%
grade 4 events	712	2641
	1%	5%
grade 5 events	1795	5025
	2%	10%
grade 6 events	1101	12007
	1%	24%
grade 7 events	51699	15946
	85%	32%

2.2 Compared Parameters

Parameter	Planned	Actual	Parameter	Planned	Actual
Instrument	ACIS	ACIS	Obspar format version number	7	7
Detector	ACIS-37	ACIS-37	Obspar file type	PREDICTED	ACTUAL
Grating	NONE	NONE	Obspar update status	NONE	UPDATED
Data mode	VFAINT	VFAINT	Number of optional ACIS chips dropped	0	0
Observation mode	POINTING	POINTING	On-chip summing requested	N	N
[deg] Pointing RA	264.355263	264.3702368470252	Subarray requested	NONE	NONE
[deg] Pointing Dec	-24.857992	-24.8818639739869	Alternating exposures requested	N	N
[deg] Pointing Roll	268.690370	268.853290826768	[s] Primary exposure time	0.000000	3
[s] Window start time (MET)	530109067.184000	530109067.184000			
[s] Window stop time (MET)	530188267.184000	530188267.184000			
[mm] SIM focus pos	-0.684267	-0.6828225247311905			
[mm] SIM defocus	0	0.001444936568705701			
[mm] SIM translation stage pos	-190.132523	-190.1400660498719			
[mm] SIM translation stage offset	0	0.00754346686406393			
[s] Observation start time (MET)	530124496.184000	530124119.8493			
Observation start date	2014-10-19T16:47:09	2014-10-19T16:41:59			
[s] Observation end time (MET)	530138896.184000	530139030.01263			
Observation end date	2014-10-19T20:47:09	2014-10-19T20:50:30			
Read mode	TIMED	TIMED			

2.3 Aspect

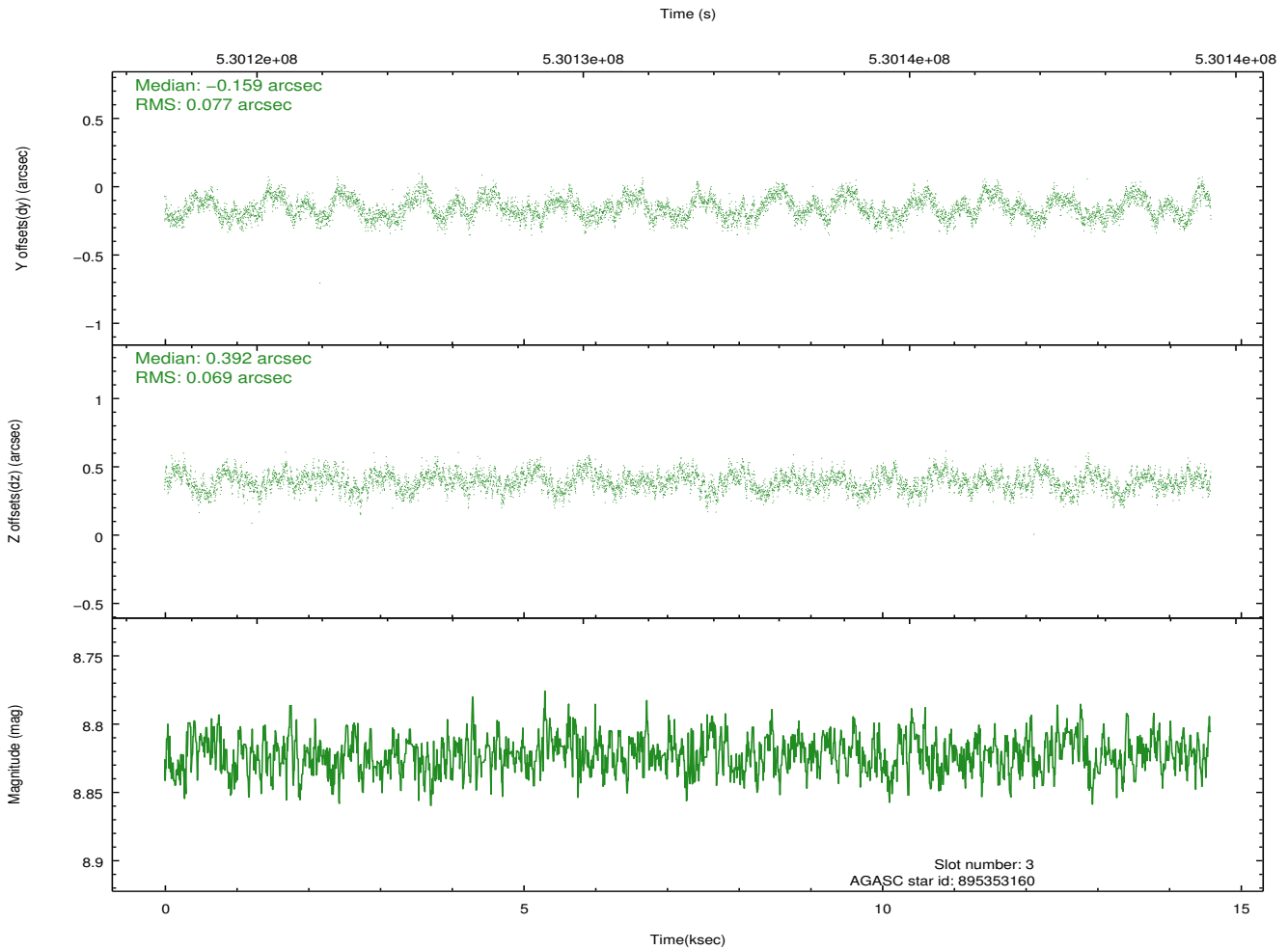
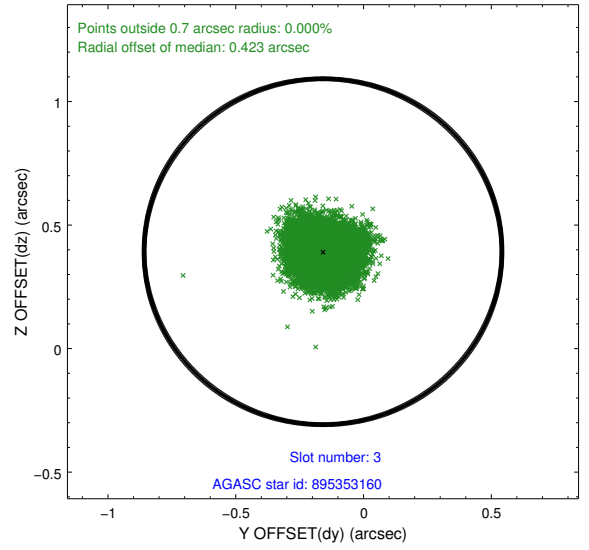
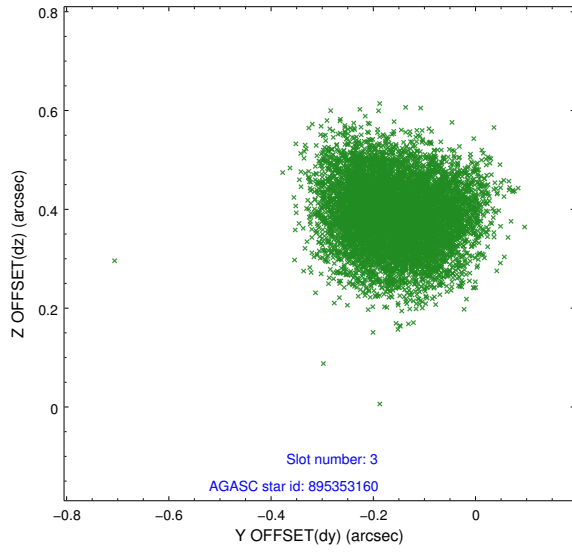


Slot Statistics

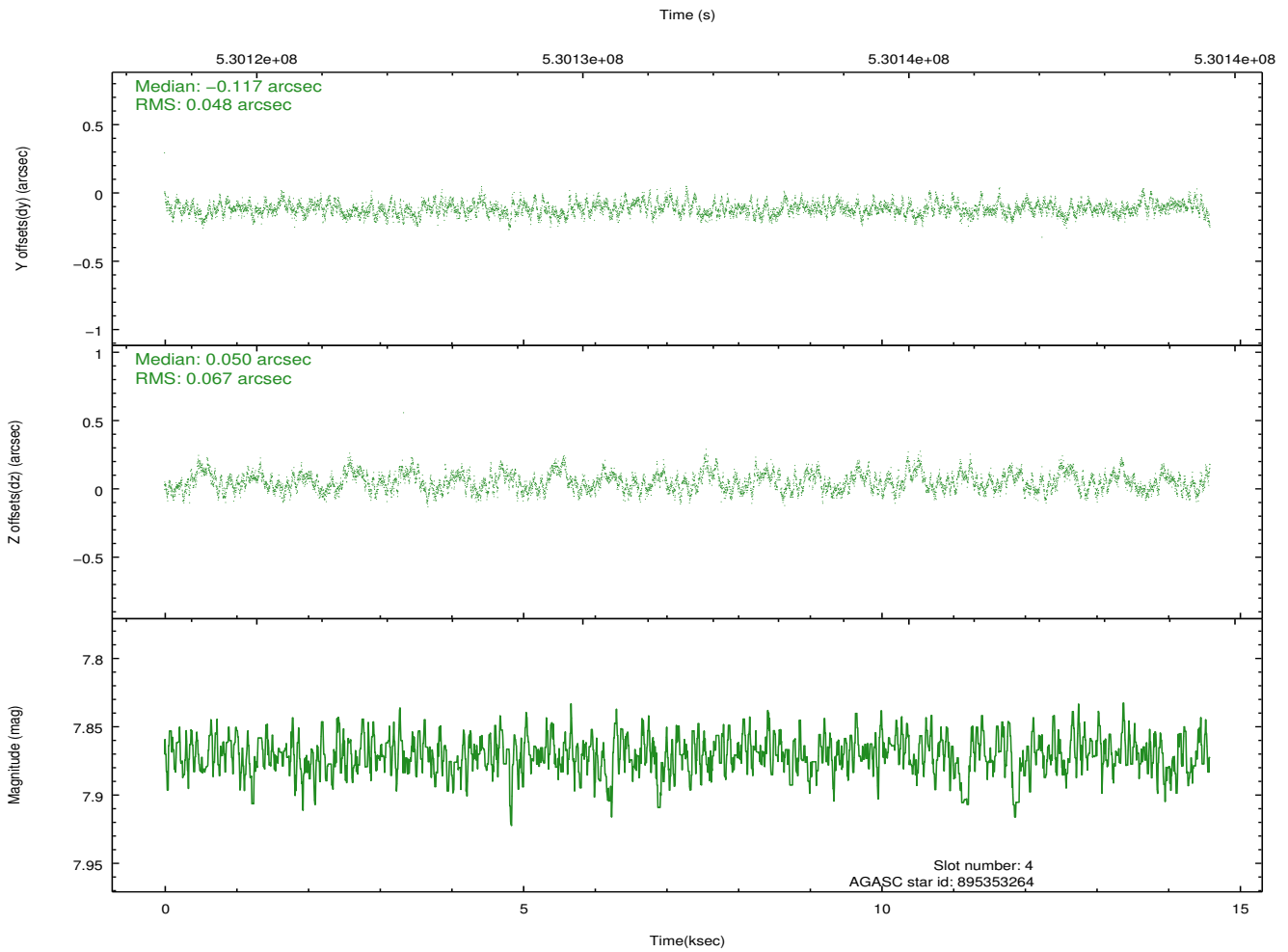
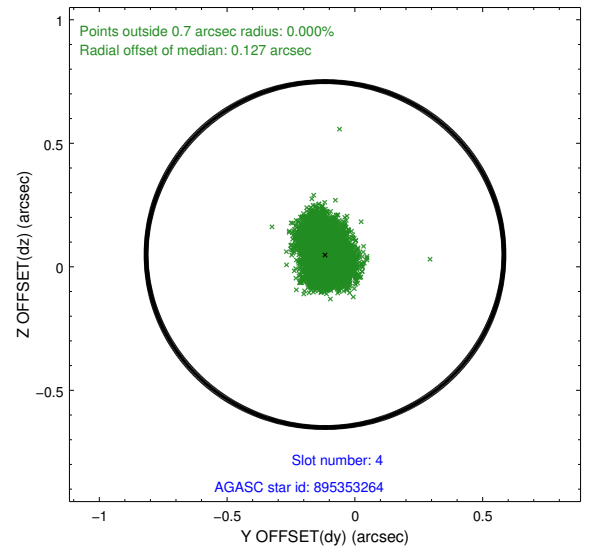
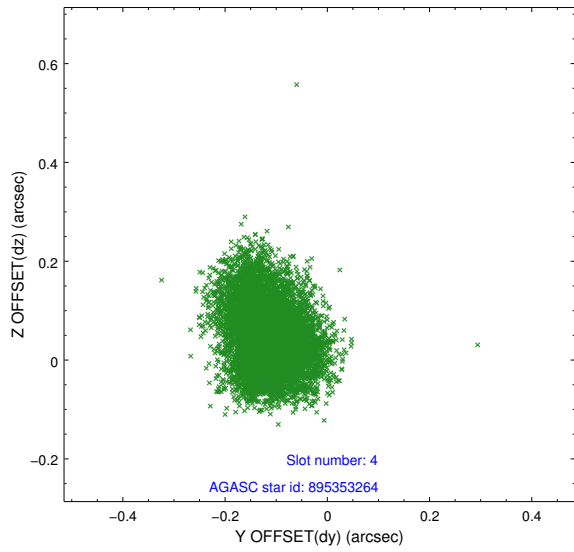
slot	status	id	mag	n_pts	med_dy	med_dz	dr1	dr2	ra	dec	mean_y	mean_z
0	FID	ACIS-S-1	7.03	3557	0.027	-0.055	0.007	0.014	0.000000	0.000000	921.70	-1738.42
1	FID	ACIS-S-4	7.04	3558	0.162	0.029	0.007	0.015	0.000000	0.000000	2139.40	165.50
2	FID	ACIS-S-5	7.07	3558	-0.216	0.038	0.007	0.016	0.000000	0.000000	-1827.02	159.44
3	GUIDE	895353160	8.82	7113	-0.159	0.392	0.112	0.170	264.317198	-24.593240	-950.42	-145.15
4	GUIDE	895353264	7.87	7114	-0.117	0.050	0.087	0.139	263.891704	-24.628320	-787.69	-1536.39
5	GUIDE	895353504	8.78	7113	0.024	-0.293	0.078	0.124	264.451518	-24.713614	-526.43	302.43
6	GUIDE	895353520	8.73	7113	0.326	0.099	0.089	0.139	263.803092	-24.654210	-687.43	-1822.60
7	GUIDE	895354312	8.50	7106	-0.080	-0.249	0.087	0.140	264.478418	-24.965830	379.27	410.51

2.4 Star Slots

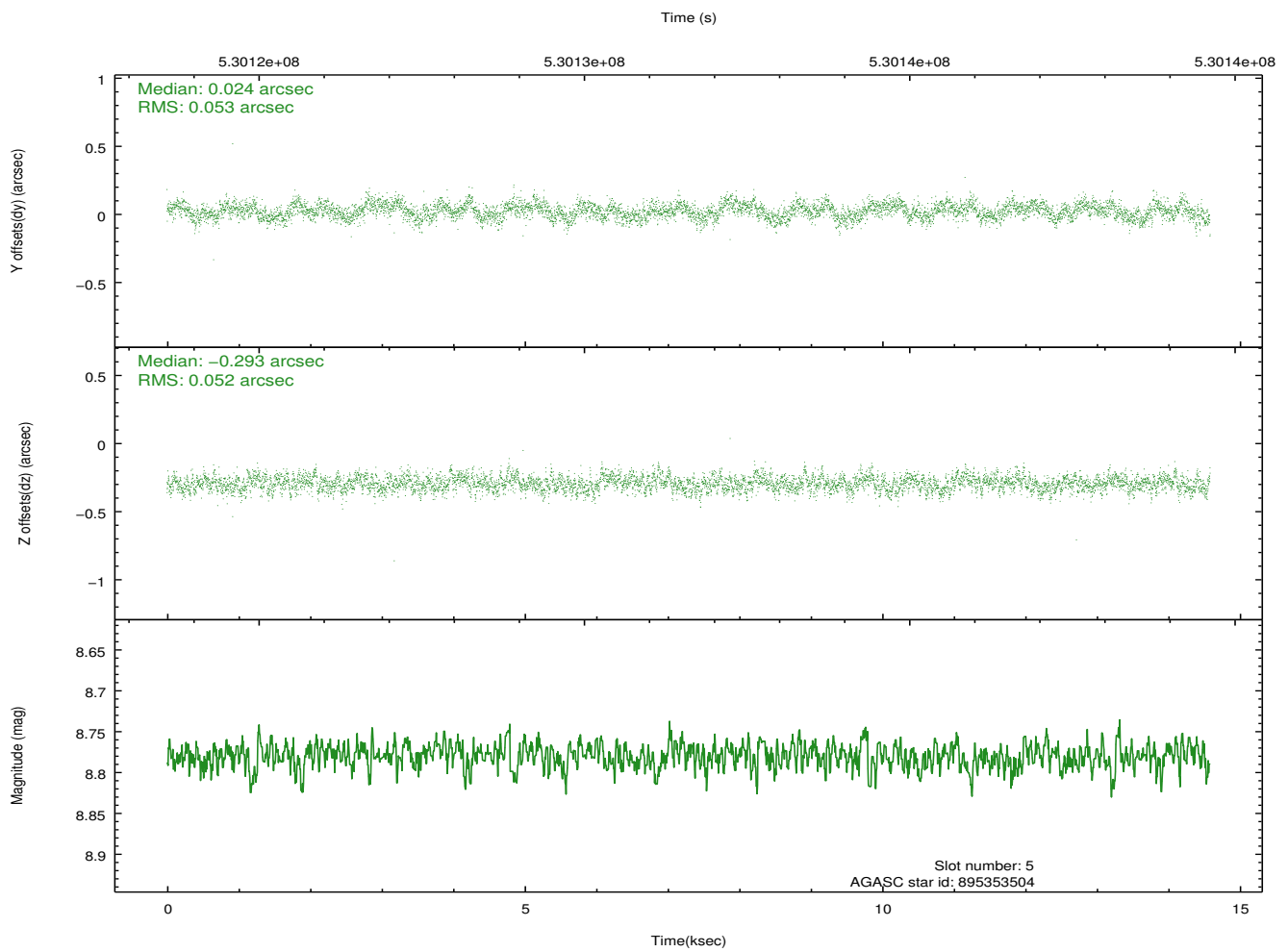
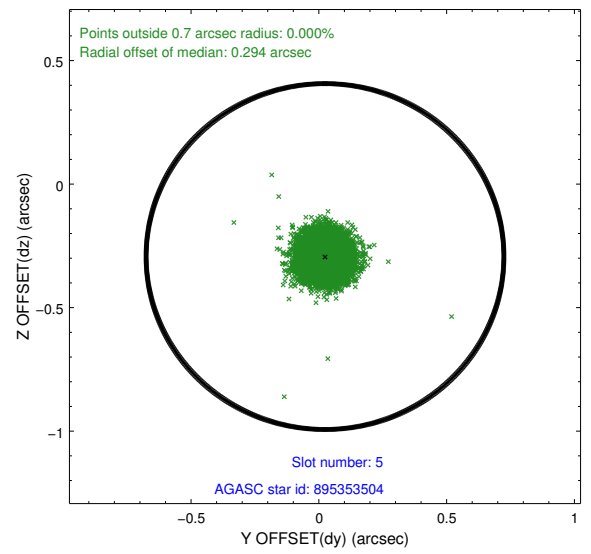
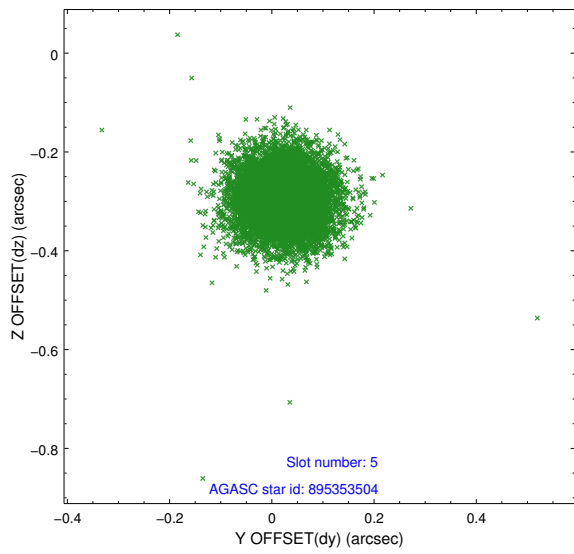
2.4.1 Slot 3



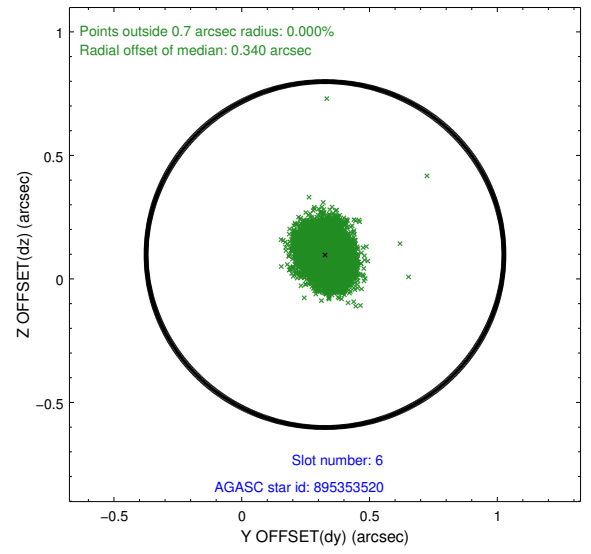
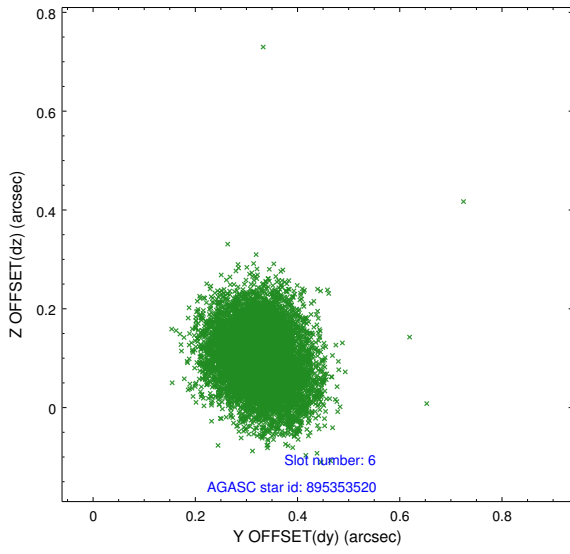
2.4.2 Slot 4



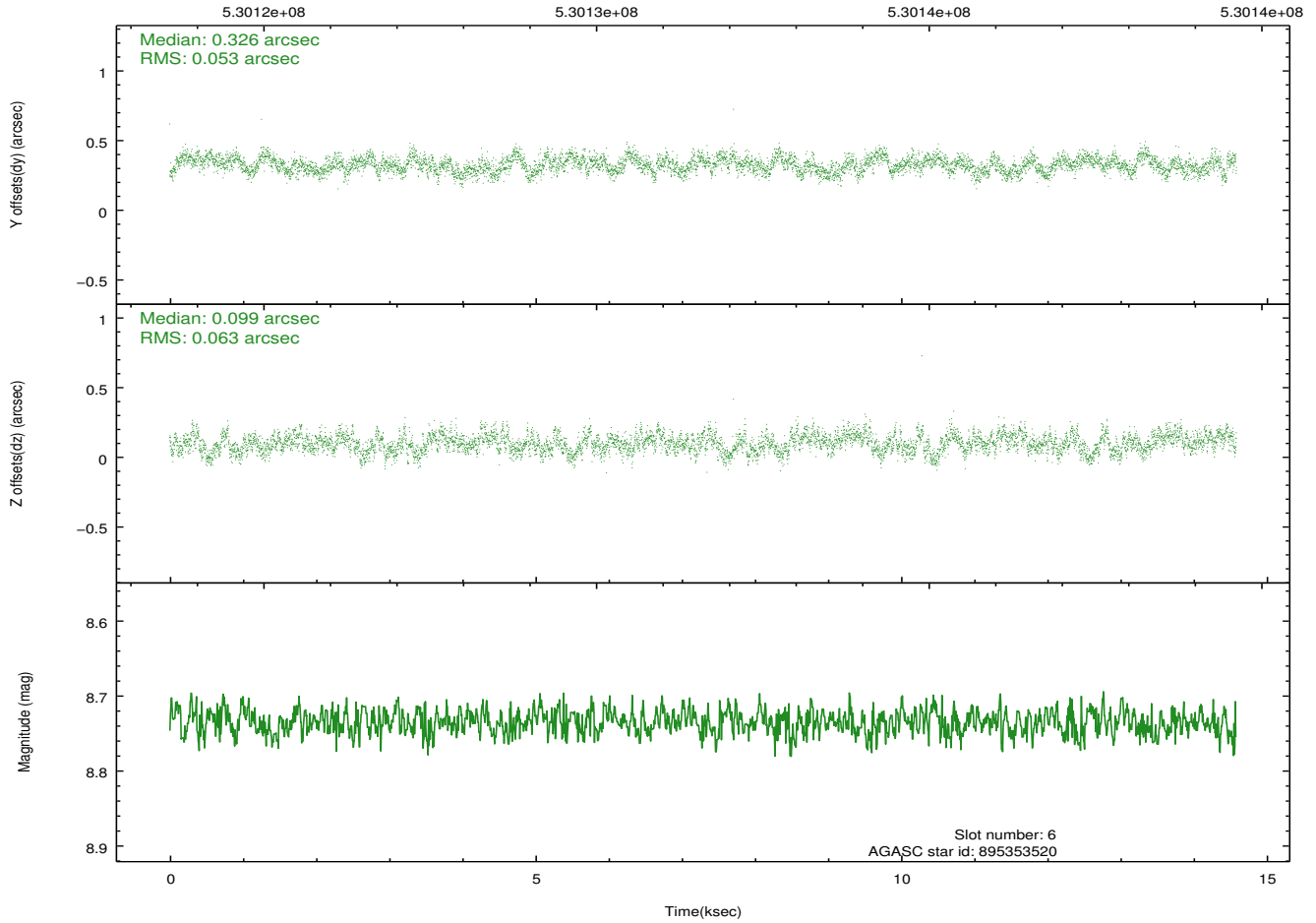
2.4.3 Slot 5



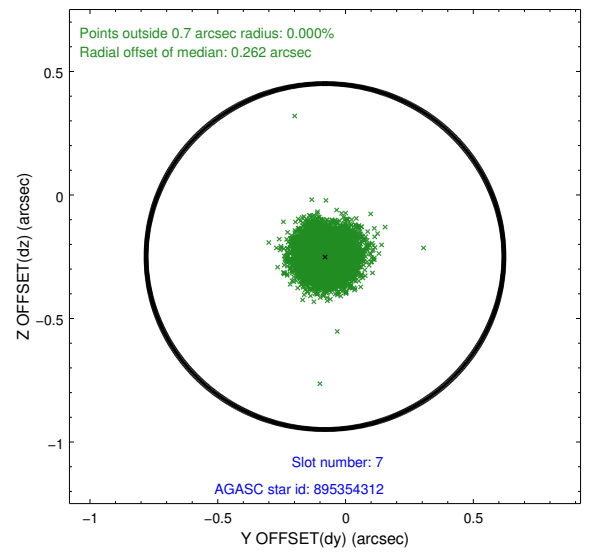
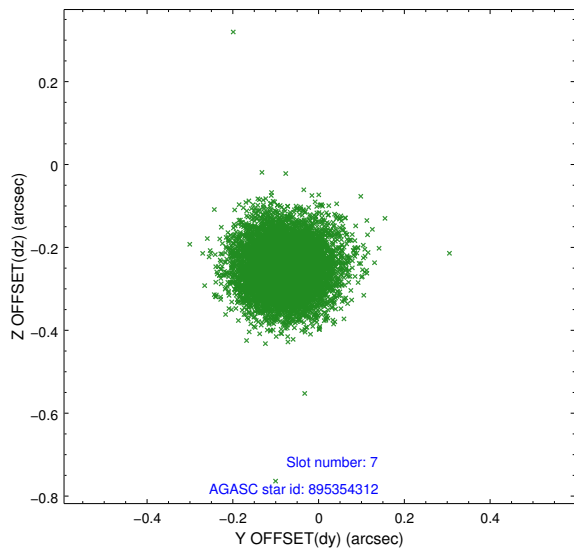
2.4.4 Slot 6



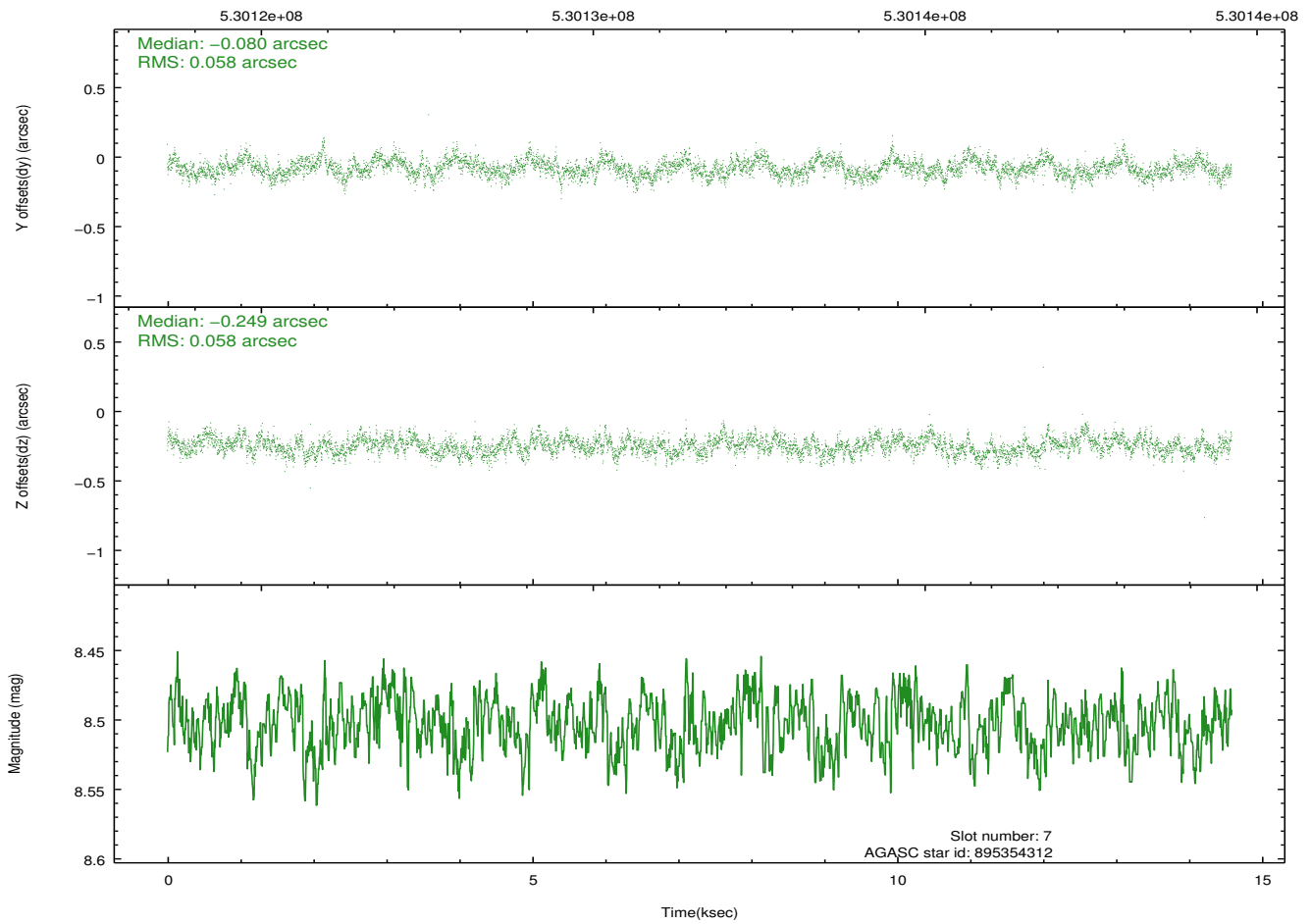
Time (s)



2.4.5 Slot 7

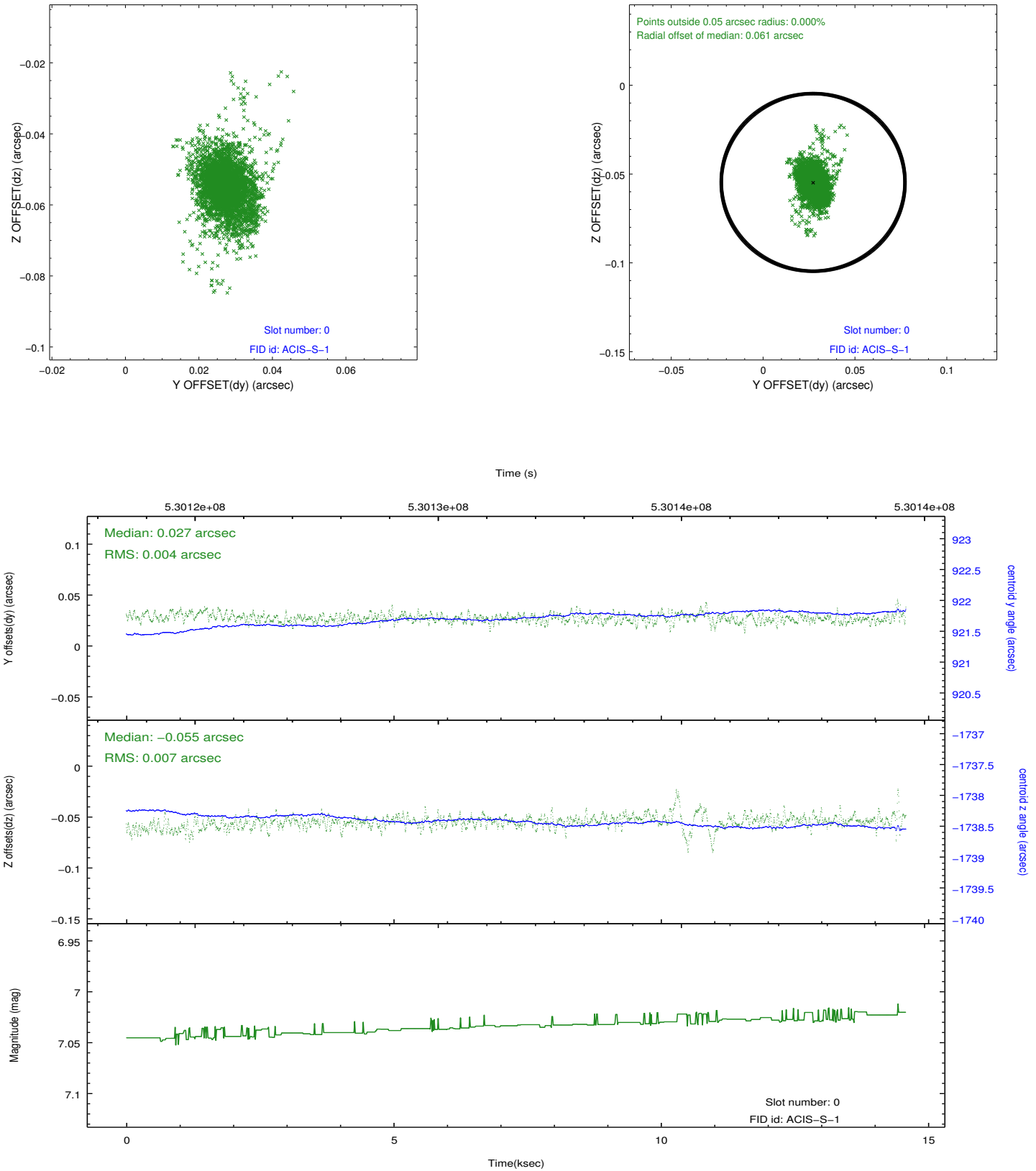


Time (s)

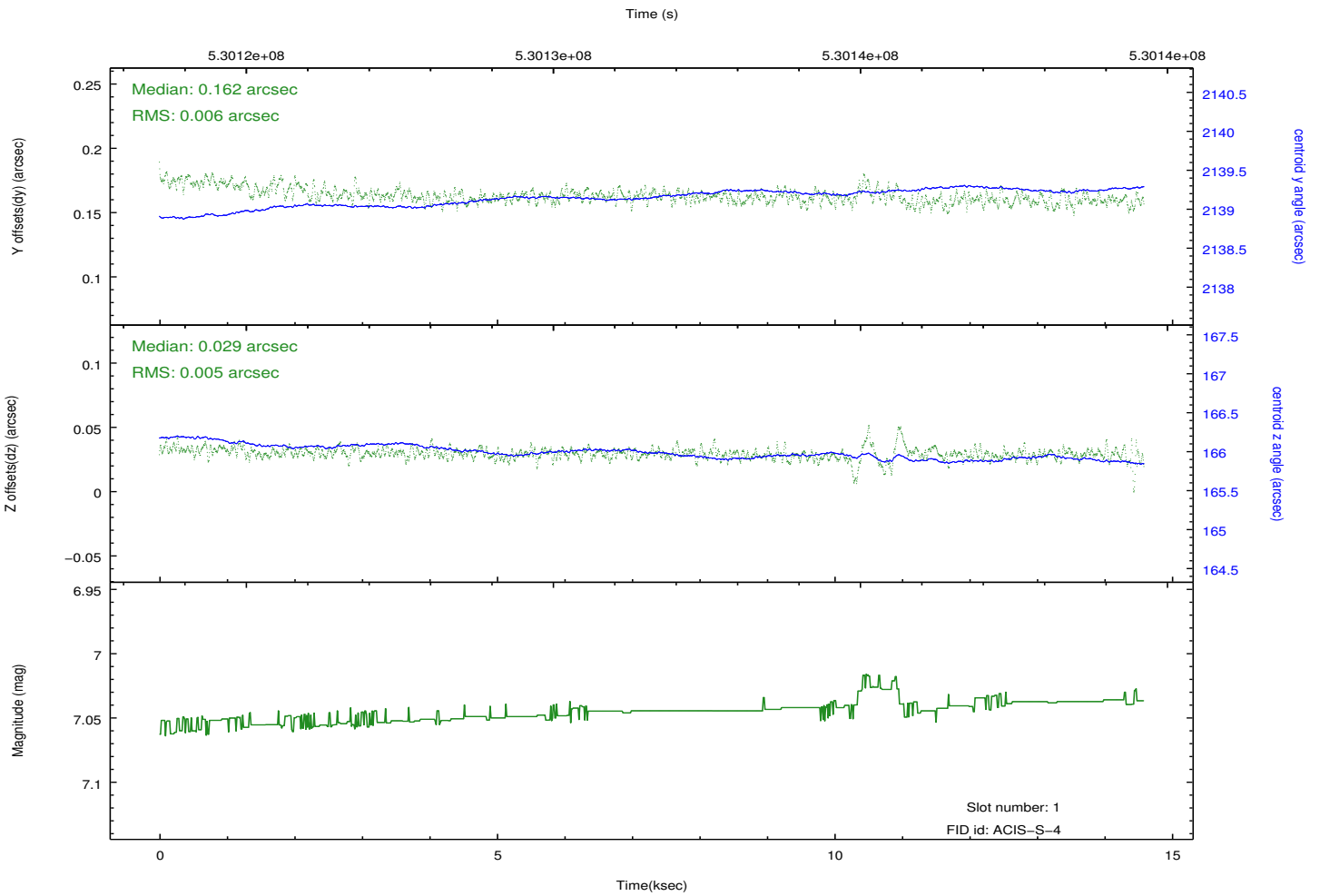
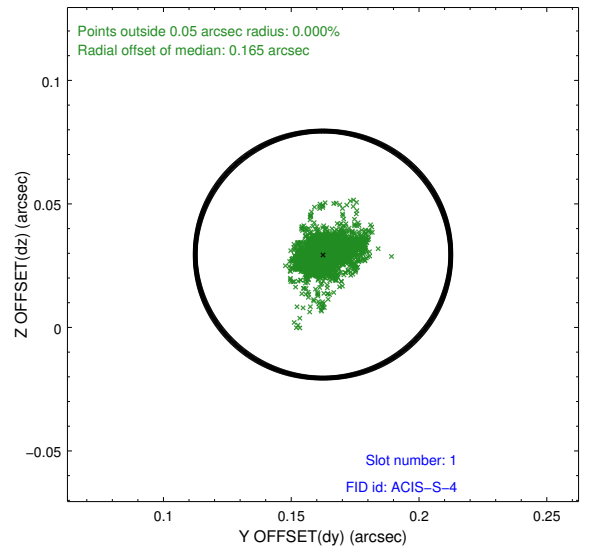
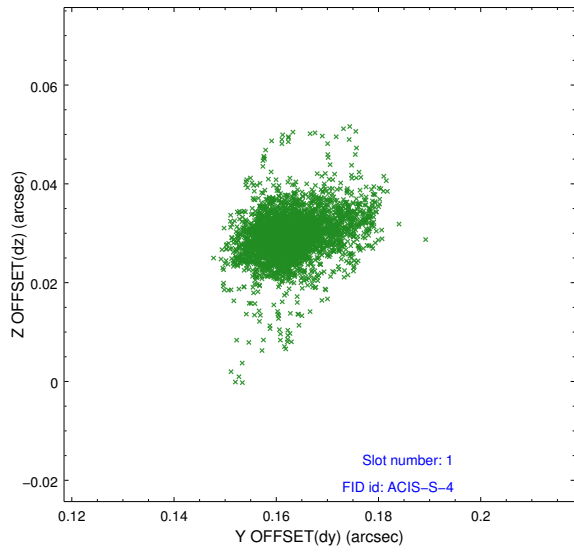


2.5 FID Slots

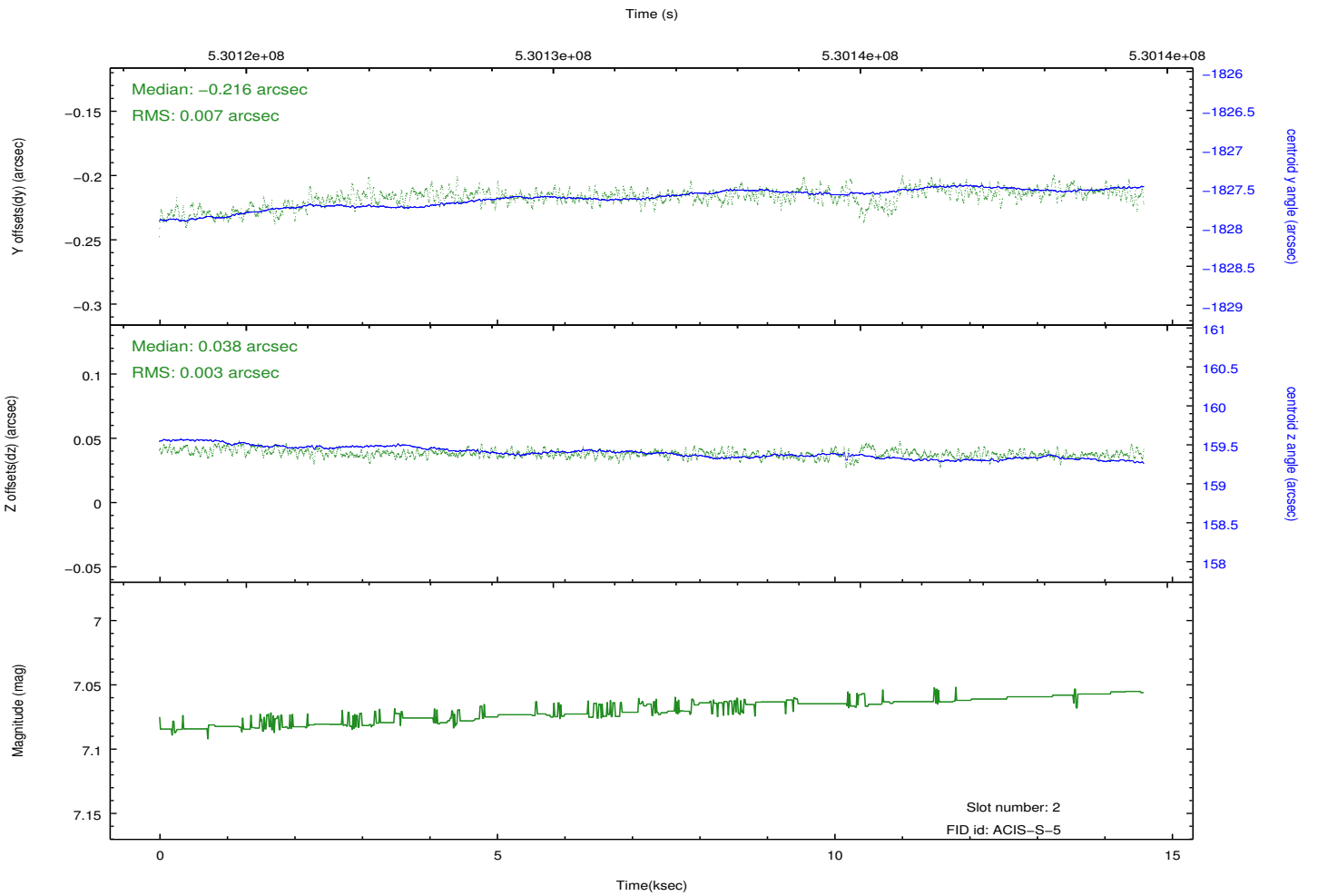
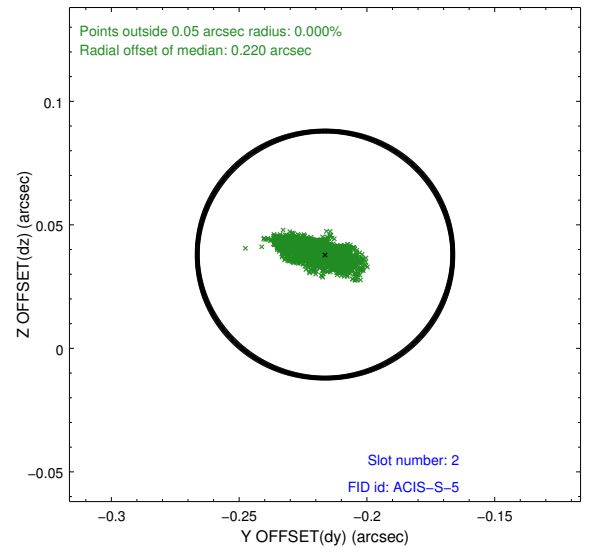
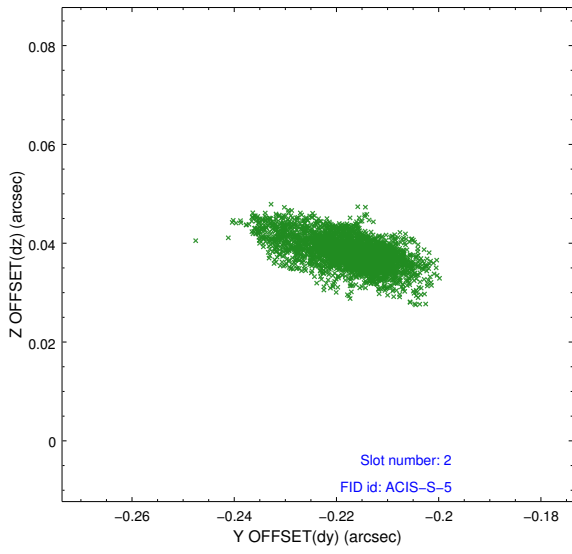
2.5.1 Slot 0



2.5.2 Slot 1



2.5.3 Slot 2



A Summary

A.1 Status

V&V Scientist	Joy Nichols
V&V Date (YYYY-MM-DD)	2014.10.20
V&V Edition	1
V&V Disposition and Status	OK
V&V Charge Time	14.58

A.2 Comments

This is a moving target. Users will need to run `sso_freeze` or similar software to position the events in the reference frame of the target.