

V&V Reference Report

L2 ASCDS Version : 10.3.3

Observation 17581 - L2 Version 1
Chandra X-Ray Center

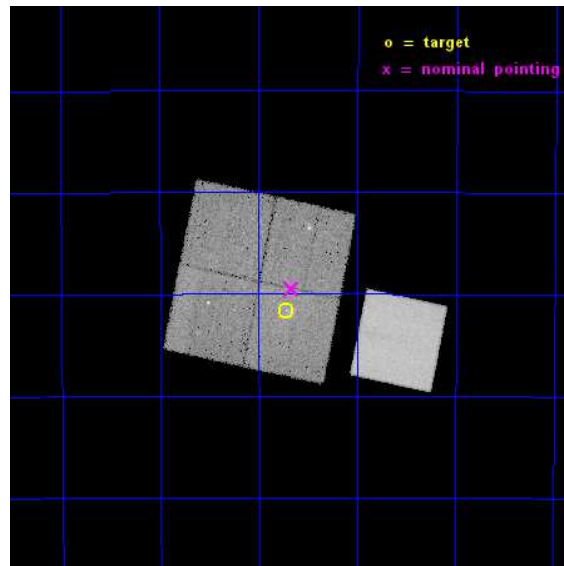
L2 Processing Date : Jan 26 2015

Contents

1	Front	2
2	OBI	3
2.1	OBI	3
2.1.1	Images	3
2.1.2	Bias	3
2.1.3	Parameters	4
2.1.4	Events	4
2.2	Compared Parameters	5
2.3	Aspect	6
2.4	Star Slots	9
2.4.1	Slot 3	9
2.4.2	Slot 4	10
2.4.3	Slot 5	11
2.4.4	Slot 6	12
2.4.5	Slot 7	13
2.5	FID Slots	14
2.5.1	Slot 0	14
2.5.2	Slot 1	15
2.5.3	Slot 2	16
A	Summary	17
A.1	Status	17
A.2	Comments	17

1 Front

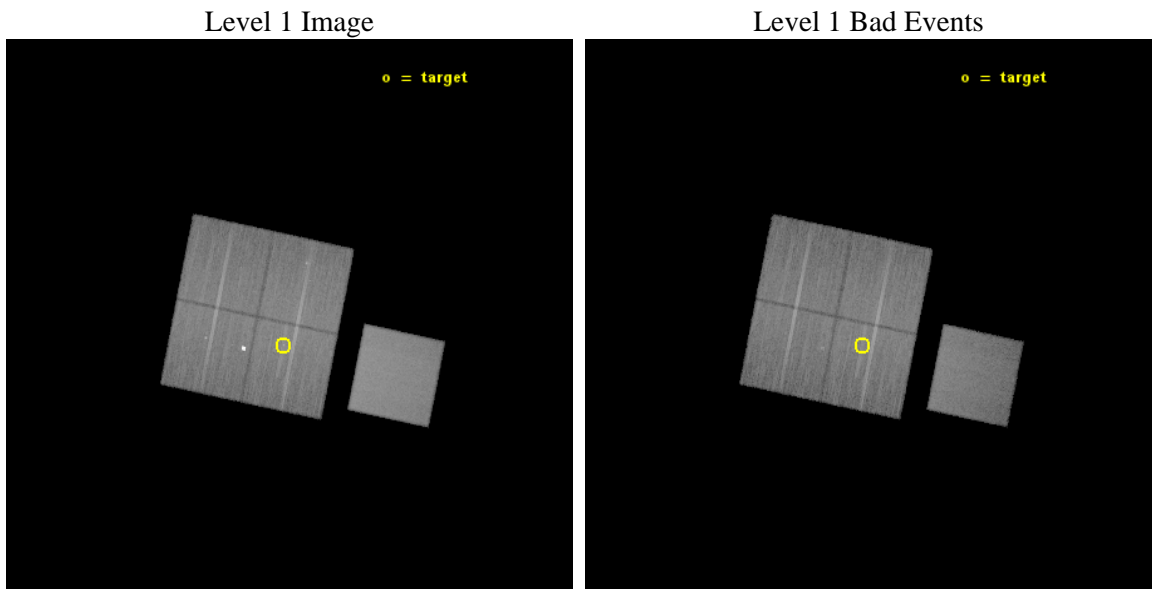
seq_num	502289	Sequence number
obs_id	17581	Observation id
title	HESS~J1640-465: Powering the most luminous gamma-ray source in the Galaxy	Proposal title
observer	Dr Eric Gotthelf	Principal investigator
object	CXOU J164043.5-463135	Source name
dtycycle	0	
cycle	P	events from which exps? Prim/Second/Both
ra_targ	250.18125	Observer's specified target RA [deg]
dec_targ	-46.526389	Observer's specified target Dec [deg]
ra_nom	250.16726481315	Nominal RA [deg]
dec_nom	-46.49146445953	Nominal Dec [deg]
roll_nom	101.69853920167	Nominal Roll [deg]
revision	1	Processing version of data
ontime	44395.100341558	Sum of GTIs [s]
livetime	43815.045672399	Livetime [s]
ontime0	44391.959331512	Sum of GTIs [s]
ontime1	44391.959371209	Sum of GTIs [s]
ontime2	44385.677401066	Sum of GTIs [s]
ontime3	44395.100341558	Sum of GTIs [s]
ontime7	44395.100341558	Sum of GTIs [s]
l2events	234330	Number of level 2 events



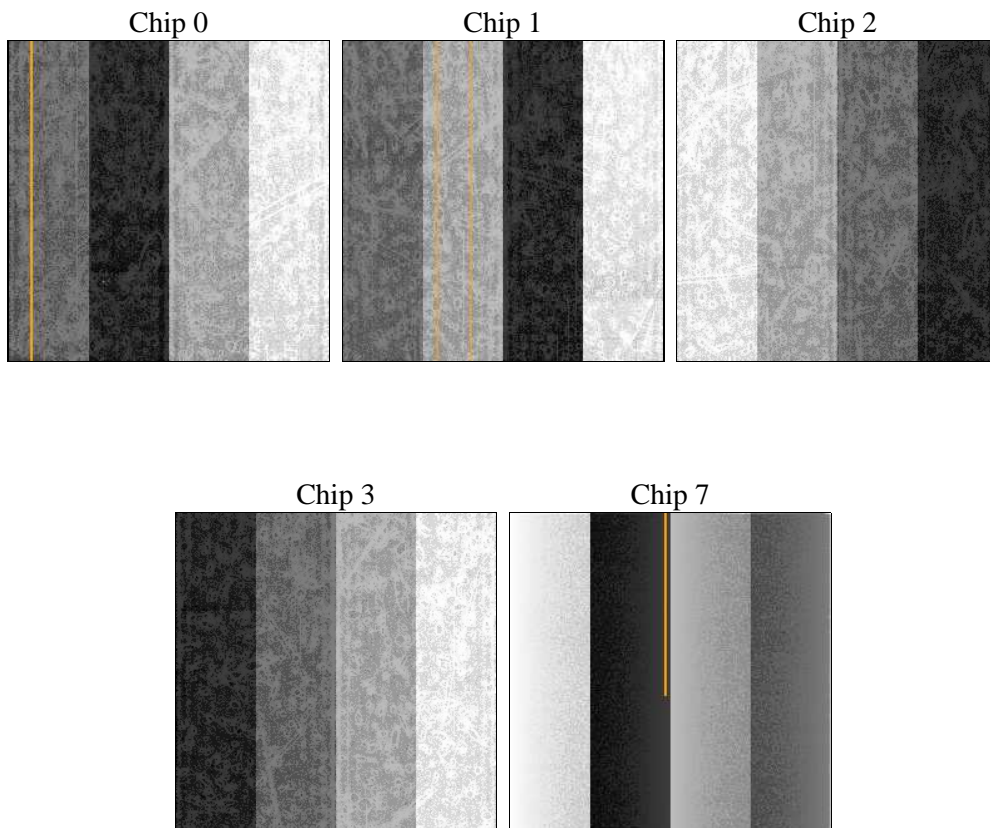
2 OBI

2.1 OBI

2.1.1 Images



2.1.2 Bias



2.1.3 Parameters

obi_num	0	Obi number	sched_exp_time	44330.000000	[s] Scheduled observation exposure time
ascdsver	10.3.3	Processing system revision	ontime	44395.100341558	Sum of GTIs [s]
caldbver	4.6.6	 	ontime0	44391.959331512	Sum of GTIs [s]
date	2015-01-26T14:06:10	Date and time of file creation	ontime1	44391.959371209	Sum of GTIs [s]
revision	1	Processing version of data	ontime2	44385.677401066	Sum of GTIs [s]
			ontime3	44395.100341558	Sum of GTIs [s]
			ontime7	44395.100341558	Sum of GTIs [s]
			l1events	1171723	Number of level 1 events

2.1.4 Events

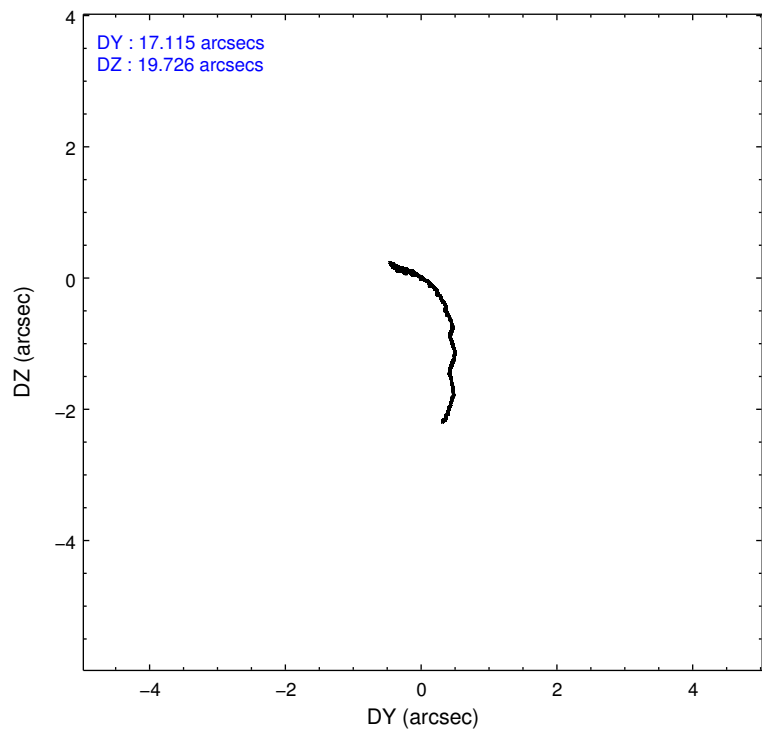
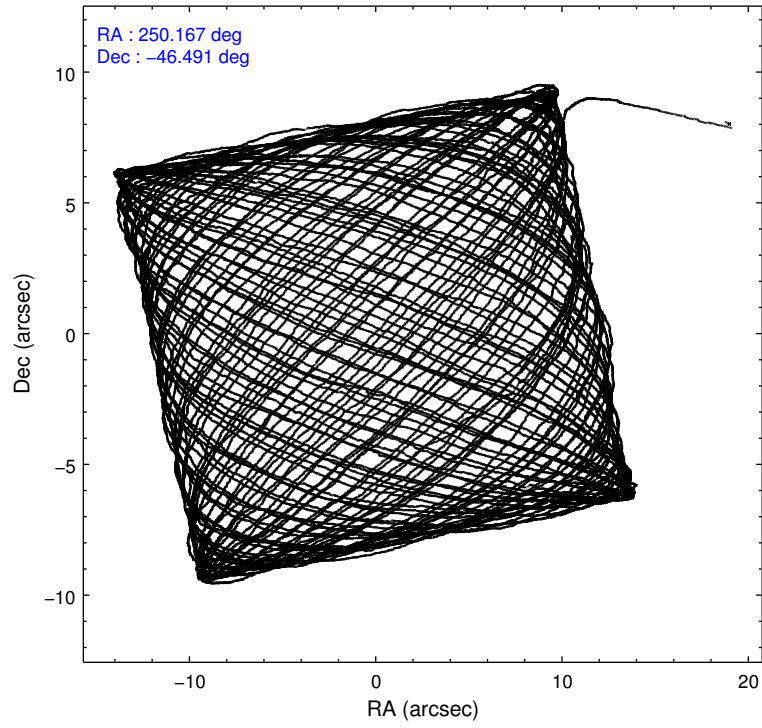
	ccd 0	ccd 1	ccd 2	ccd 3	ccd 7
level 1 events	199774	233232	220236	218759	299722
rejected events	170510	173980	189135	187836	167007
rejected %	85%	74%	85%	85%	55%

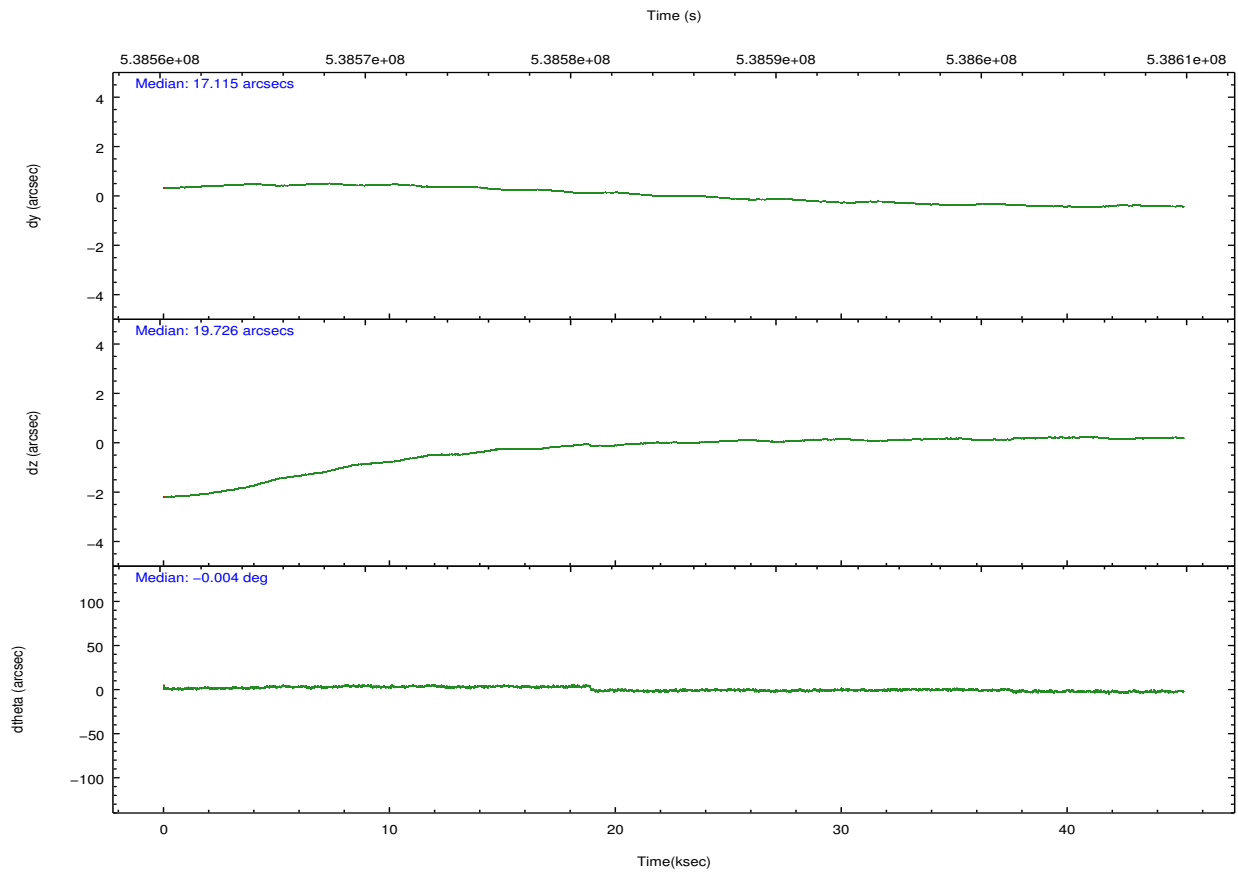
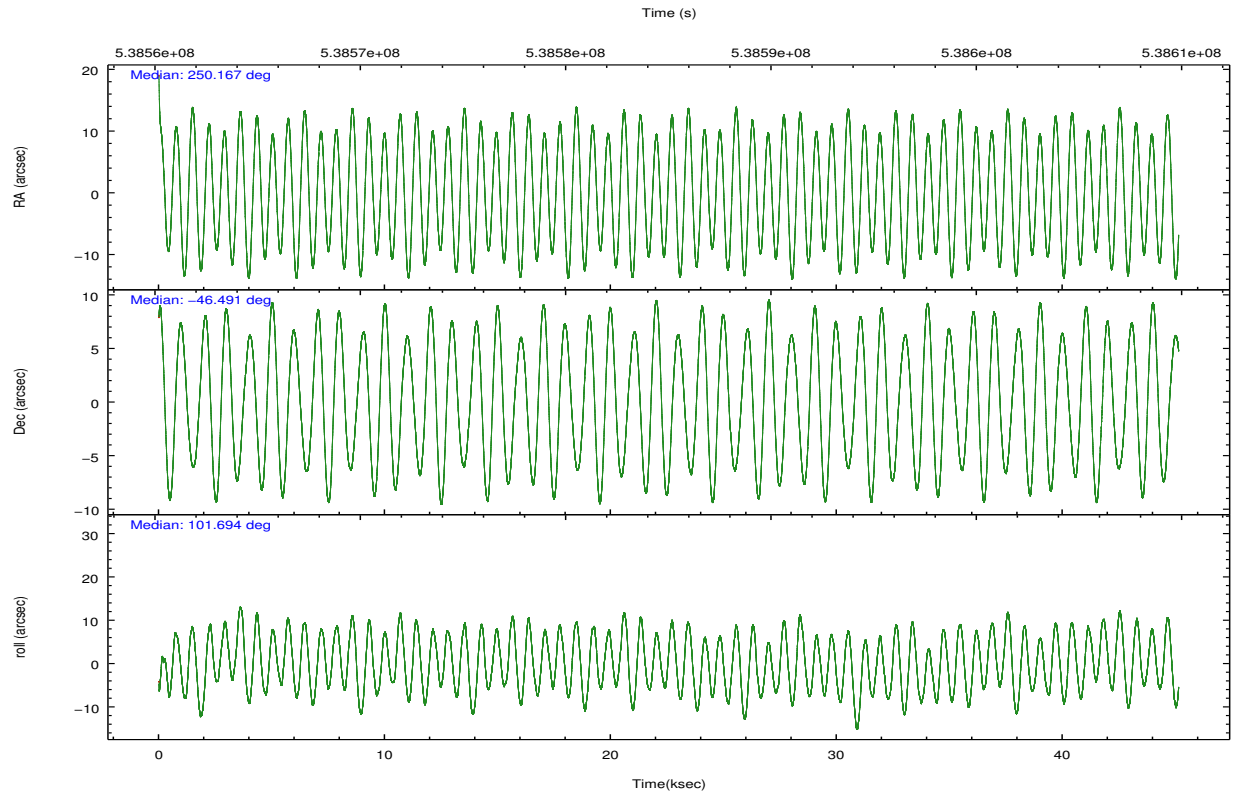
	ccd 0	ccd 1	ccd 2	ccd 3	ccd 7
grade 0 events	11547	39645	13239	13622	12337
	5%	16%	6%	6%	4%
grade 1 events	136	198	134	190	384
	0%	0%	0%	0%	0%
grade 2 events	6903	7441	7017	6095	27822
	3%	3%	3%	2%	9%
grade 3 events	2890	2912	2815	2873	11368
	1%	1%	1%	1%	3%
grade 4 events	2597	2929	2845	2893	11100
	1%	1%	1%	1%	3%
grade 5 events	10122	11007	9601	11524	30472
	5%	4%	4%	5%	10%
grade 6 events	5332	6334	5190	5444	70107
	2%	2%	2%	2%	23%
grade 7 events	160247	162766	179395	176118	136132
	80%	69%	81%	80%	45%

2.2 Compared Parameters

Parameter	Planned	Actual	Parameter	Planned	Actual
Instrument	ACIS	ACIS	Obspar format version number	7	7
Detector	ACIS-01237	ACIS-01237	Obspar file type	PREDICTED	ACTUAL
Grating	NONE	NONE	Obspar update status	NONE	UPDATED
Data mode	VFAINT	VFAINT	CCD I0 on	Y	Y
Observation mode	POINTING	POINTING	CCD I1 on	Y	Y
[deg] Pointing RA	250.194051	250.1672648131547	CCD I2 on	Y	Y
[deg] Pointing Dec	-46.512007	-46.49146445953004	CCD I3 on	Y	Y
[deg] Pointing Roll	101.509286	101.6985392016655	CCD S0 on	N	N
[mm] SIM focus pos	-0.782348	-0.7809083437167272	CCD S1 on	N	N
[mm] SIM defocus	0	0.001439871863259334	CCD S2 on	N	N
[mm] SIM translation stage pos	-225.694963	-225.7025416751365	CCD S3 on	O1	Y
[mm] SIM translation stage offset	-7.8975	-7.889911327793158	CCD S4 on	N	N
[s] Observation start time (MET)	538563262.184000	538561316.08189	CCD S5 on	N	N
Observation start date	2015-01-25T08:53:15	2015-01-25T08:21:56	Number of optional ACIS chips dropped	0	0
[s] Observation end time (MET)	538607592.184000	538608578.83453	On-chip summing requested	N	N
Observation end date	2015-01-25T21:12:05	2015-01-25T21:29:38	Subarray requested	NONE	NONE
Read mode	TIMED	TIMED	Alternating exposures requested	N	N
			[s] Primary exposure time	0.000000	3.1

2.3 Aspect





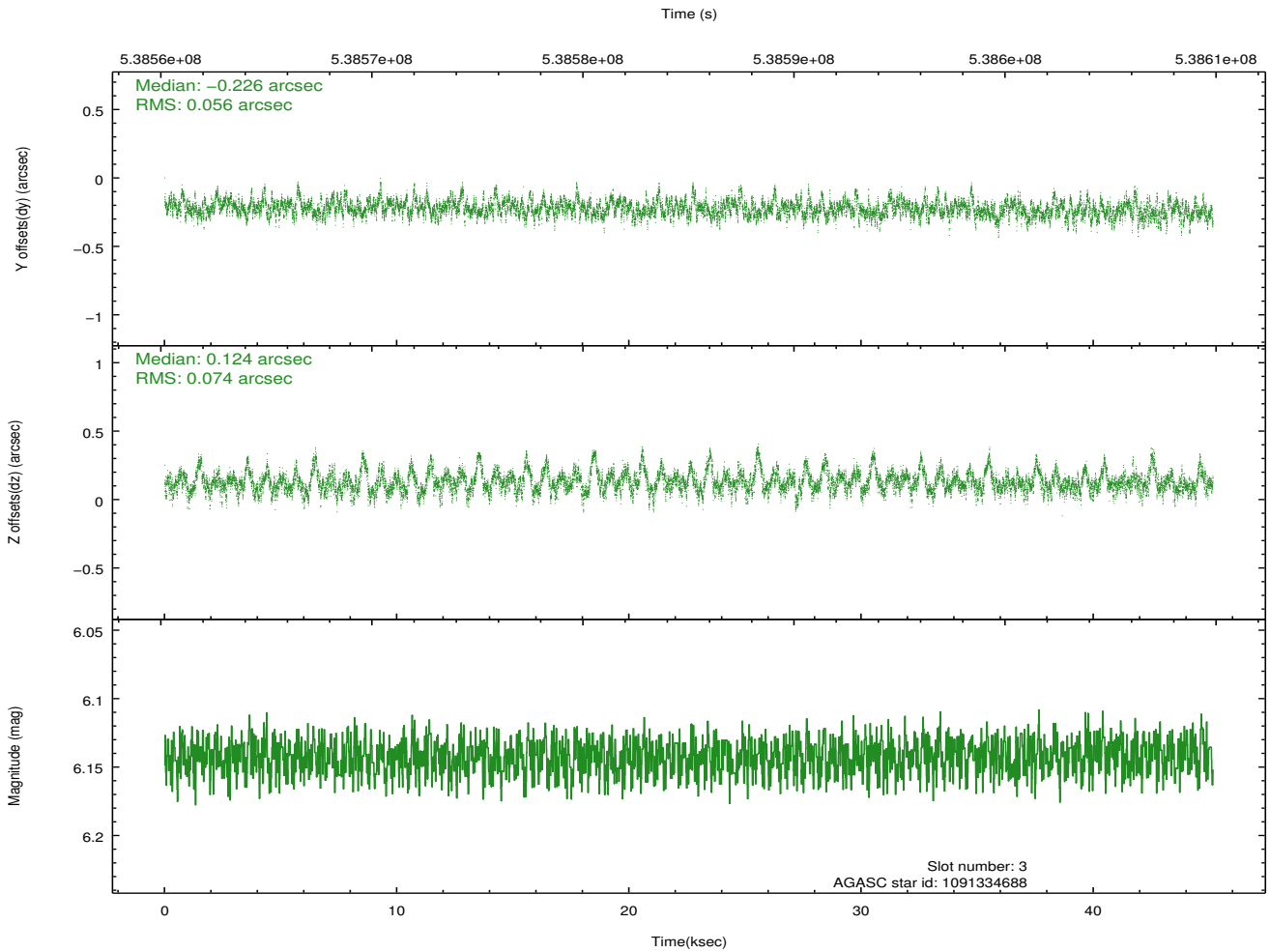
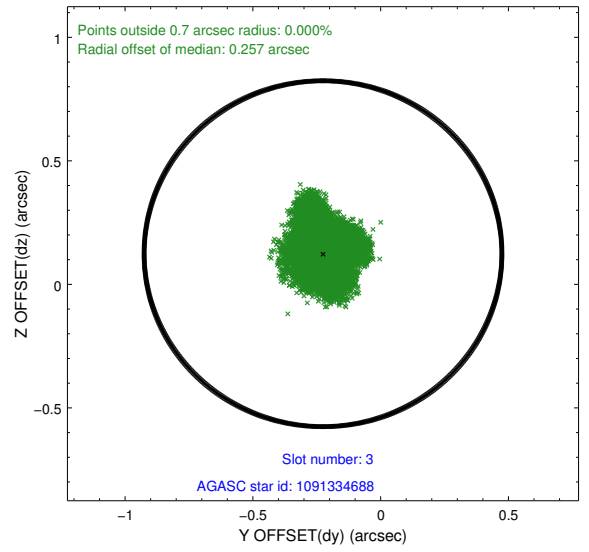
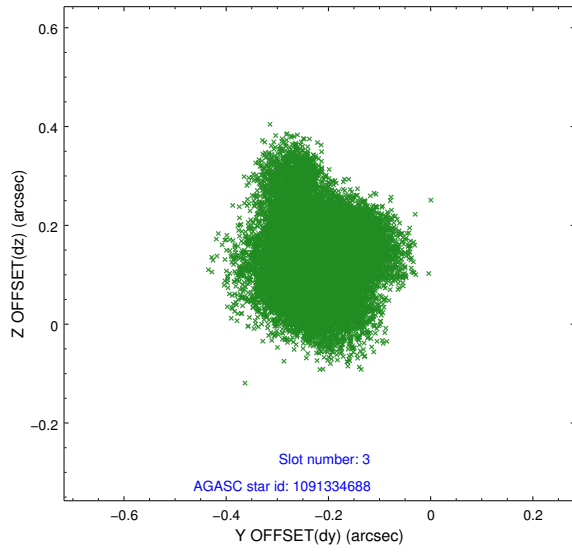
Slot Statistics

slot	status	used	id	mag	n_pts	med_dy	med_dz	dr1	dr2	ra	dec	mean_y	mean_z
0	FID		ACIS-I-2	7.03	11011	-0.190	-0.044	0.027	0.055	0.000000	0.000000	-772.63	-1010.45
1	FID		ACIS-I-4	6.98	11010	0.260	0.118	0.034	0.046	0.000000	0.000000	2141.80	895.91
2	FID		ACIS-I-5	7.06	11009	-0.159	-0.005	0.053	0.072	0.000000	0.000000	-1826.09	892.52
3	GUIDE	used	1091334688	6.14	22020	-0.226	0.124	0.097	0.168	250.764858	-46.070295	1268.75	-1712.79
4	GUIDE	used	1091838488	9.41	21998	0.190	0.600	0.176	0.286	251.127983	-46.881927	-1776.33	-1982.82
5	GUIDE	used	1091193912	8.90	22011	-0.204	0.027	0.115	0.182	250.208472	-45.834358	2383.13	-521.86
6	GUIDE	used	1091704704	10.08	21906	0.235	-0.383	0.203	0.331	249.457504	-47.039620	-1508.75	2151.09
7	GUIDE	used	1091706496	8.39	22012	0.014	-0.379	0.098	0.159	249.546894	-47.245288	-2277.74	2077.66

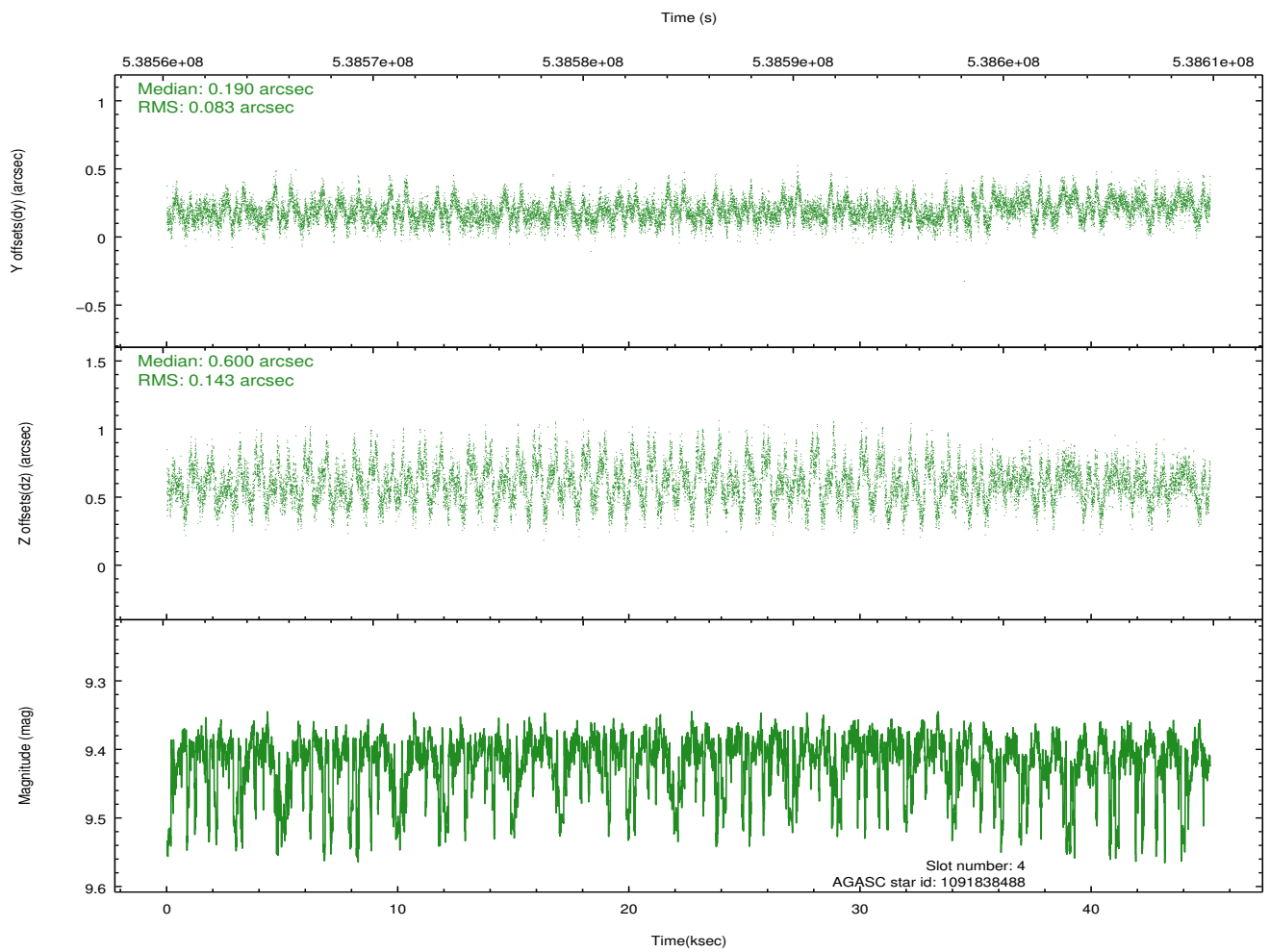
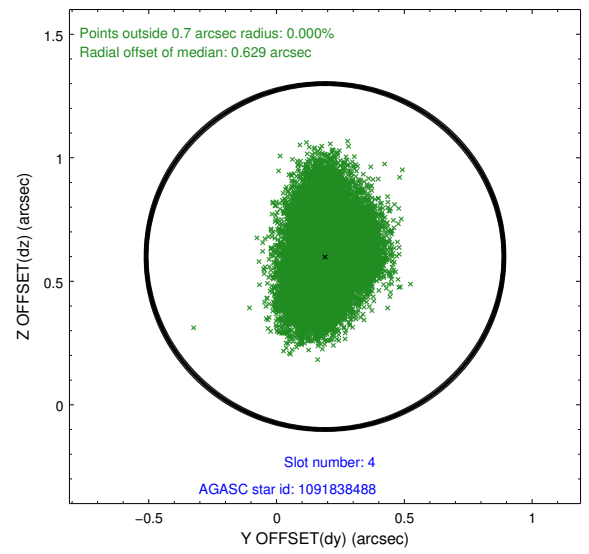
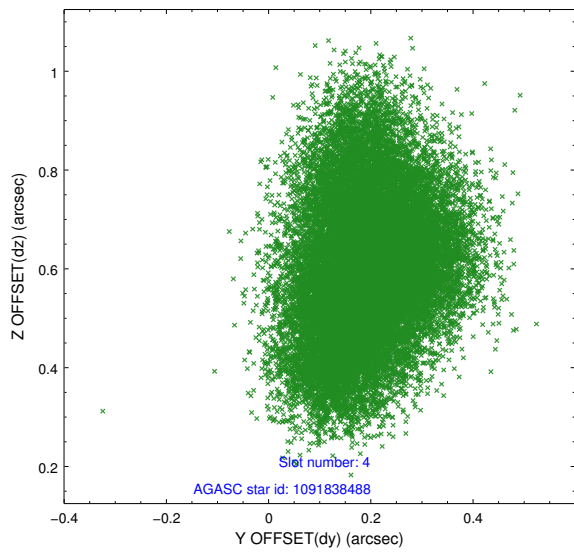
∞

2.4 Star Slots

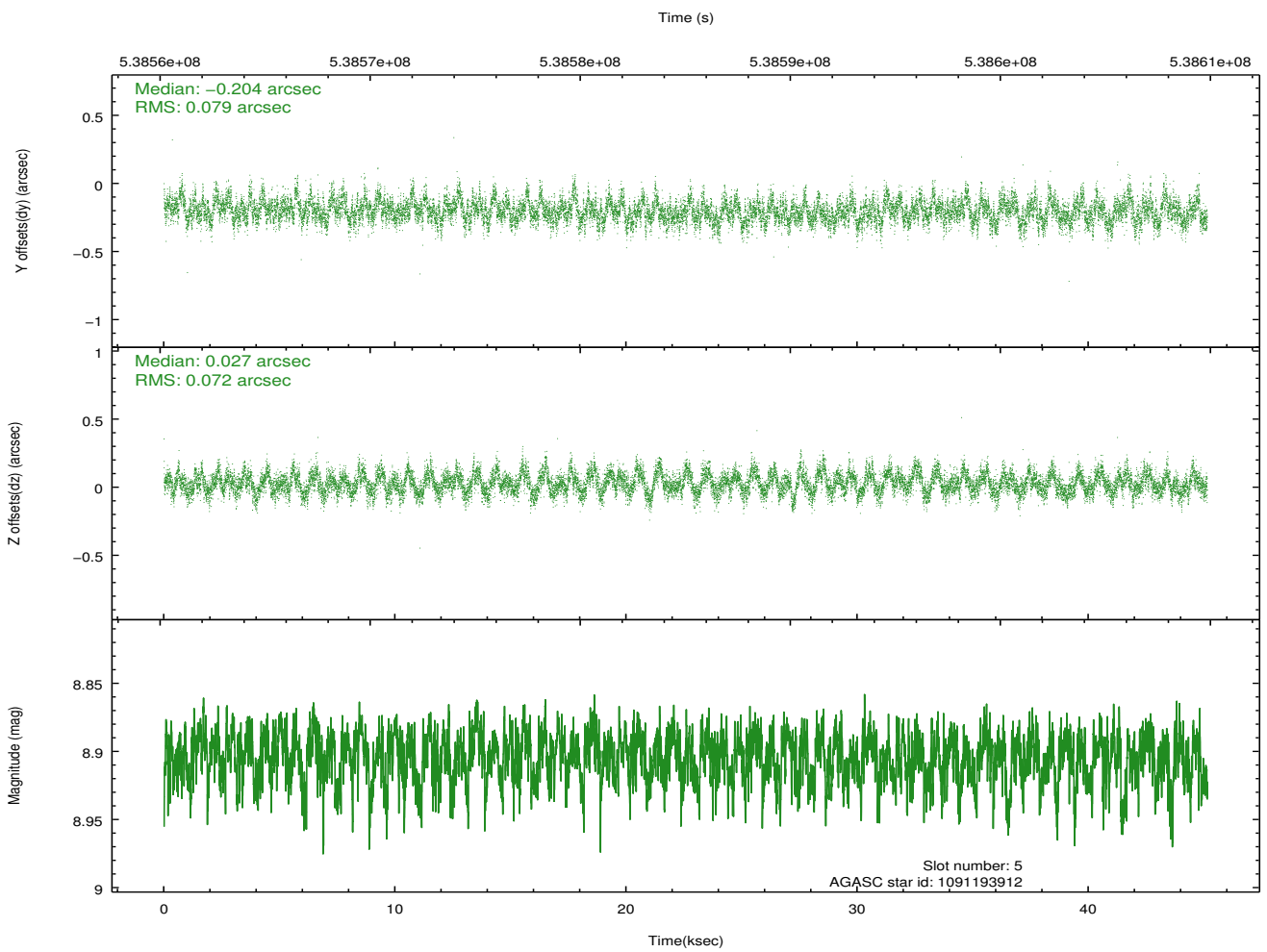
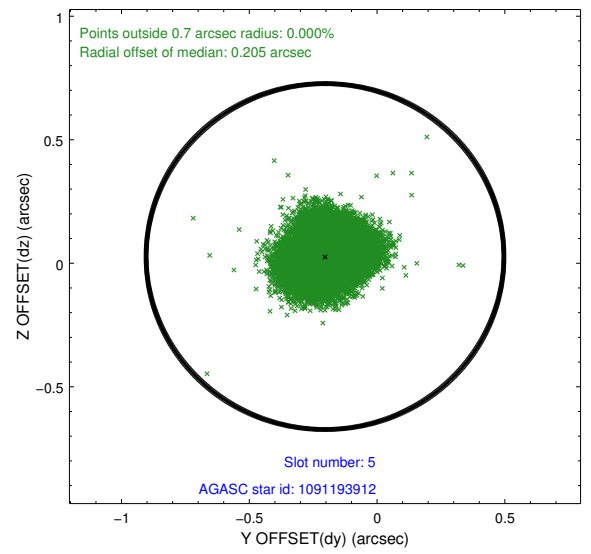
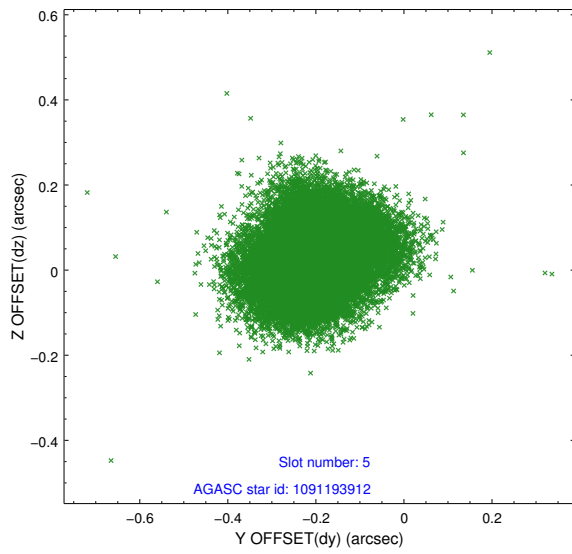
2.4.1 Slot 3



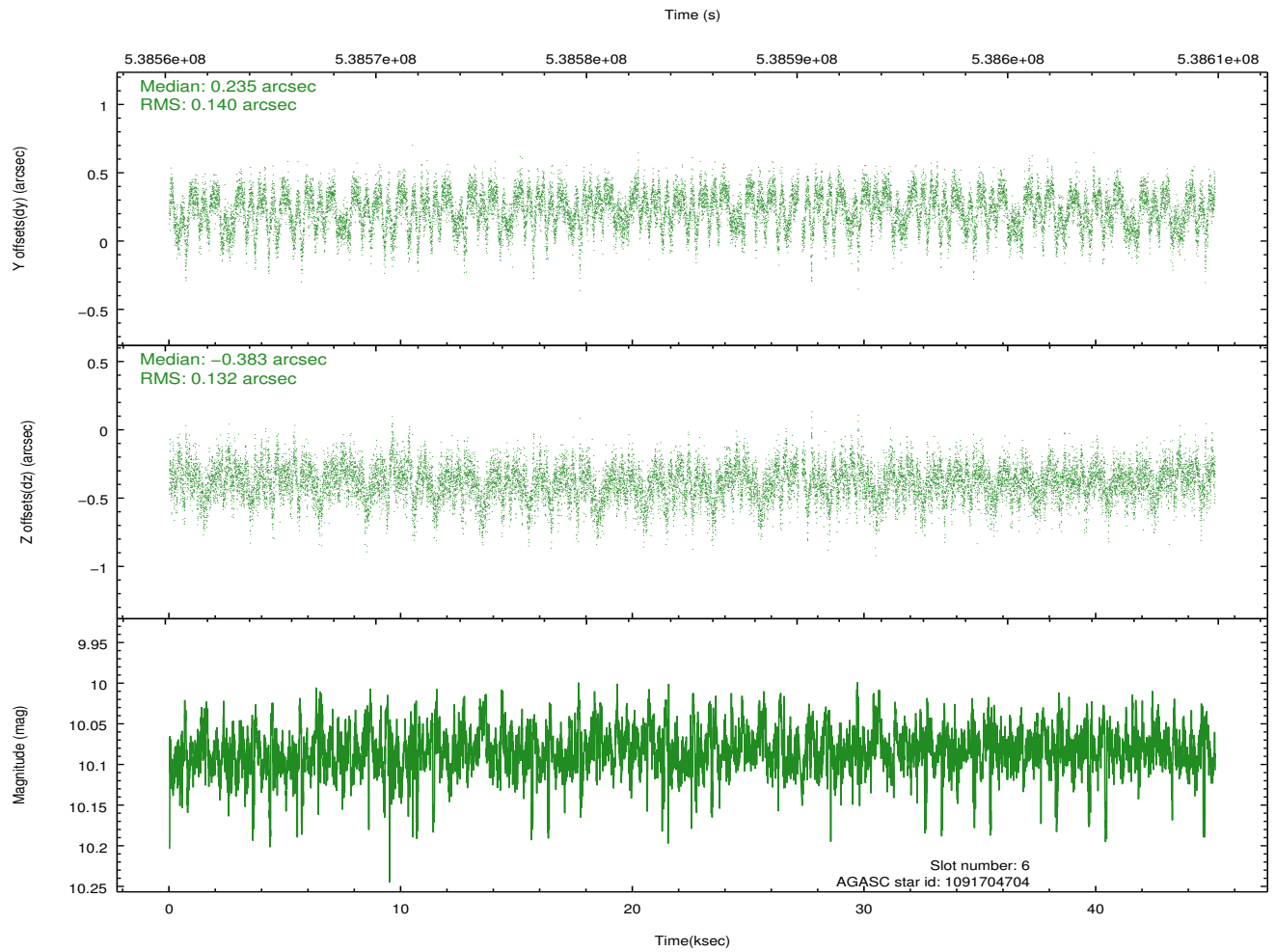
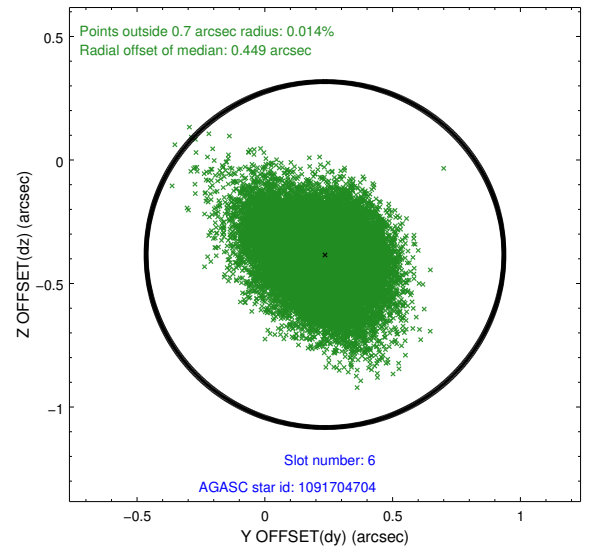
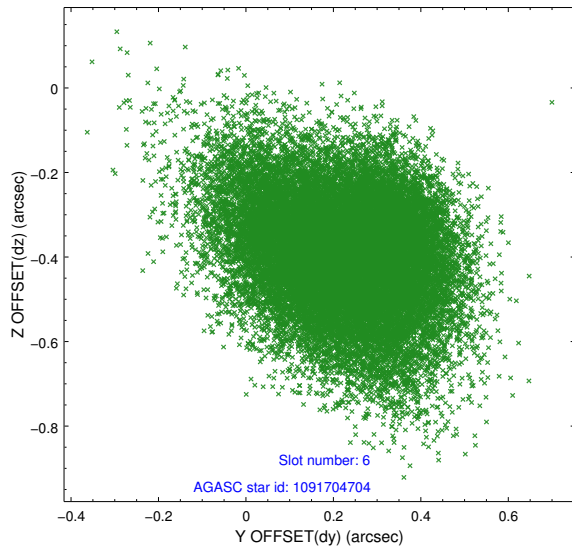
2.4.2 Slot 4



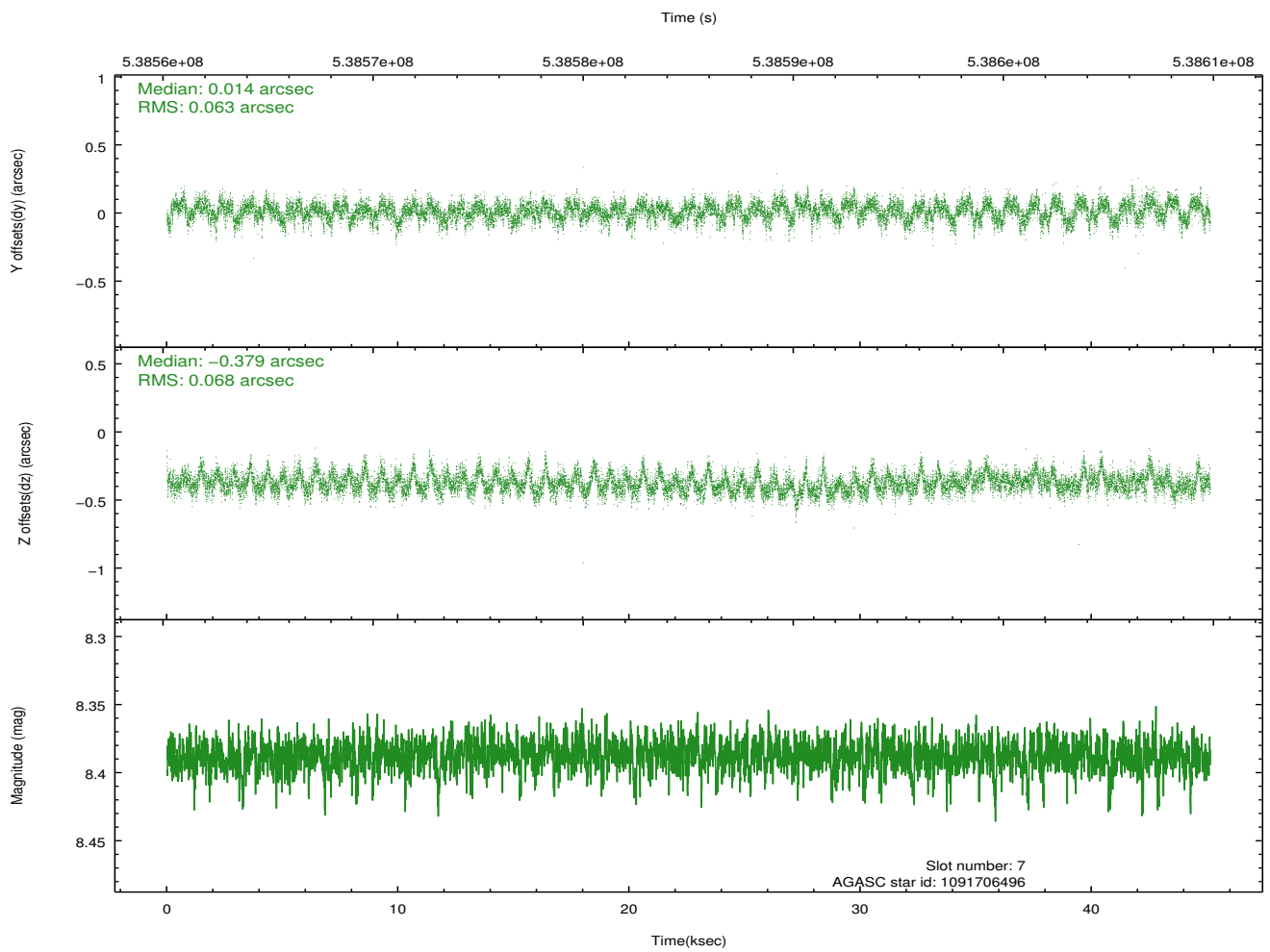
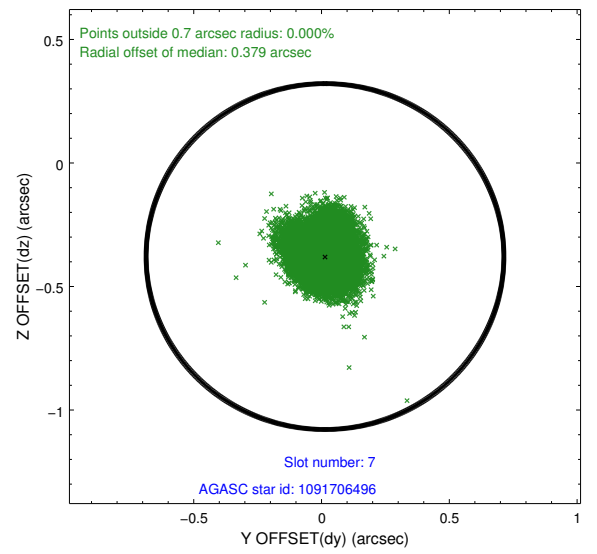
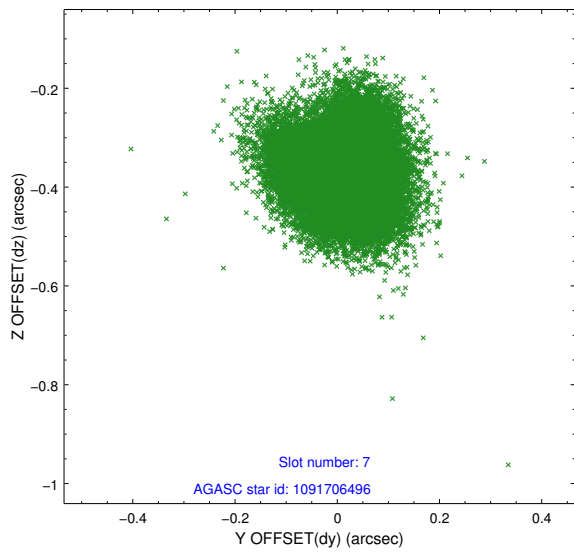
2.4.3 Slot 5



2.4.4 Slot 6

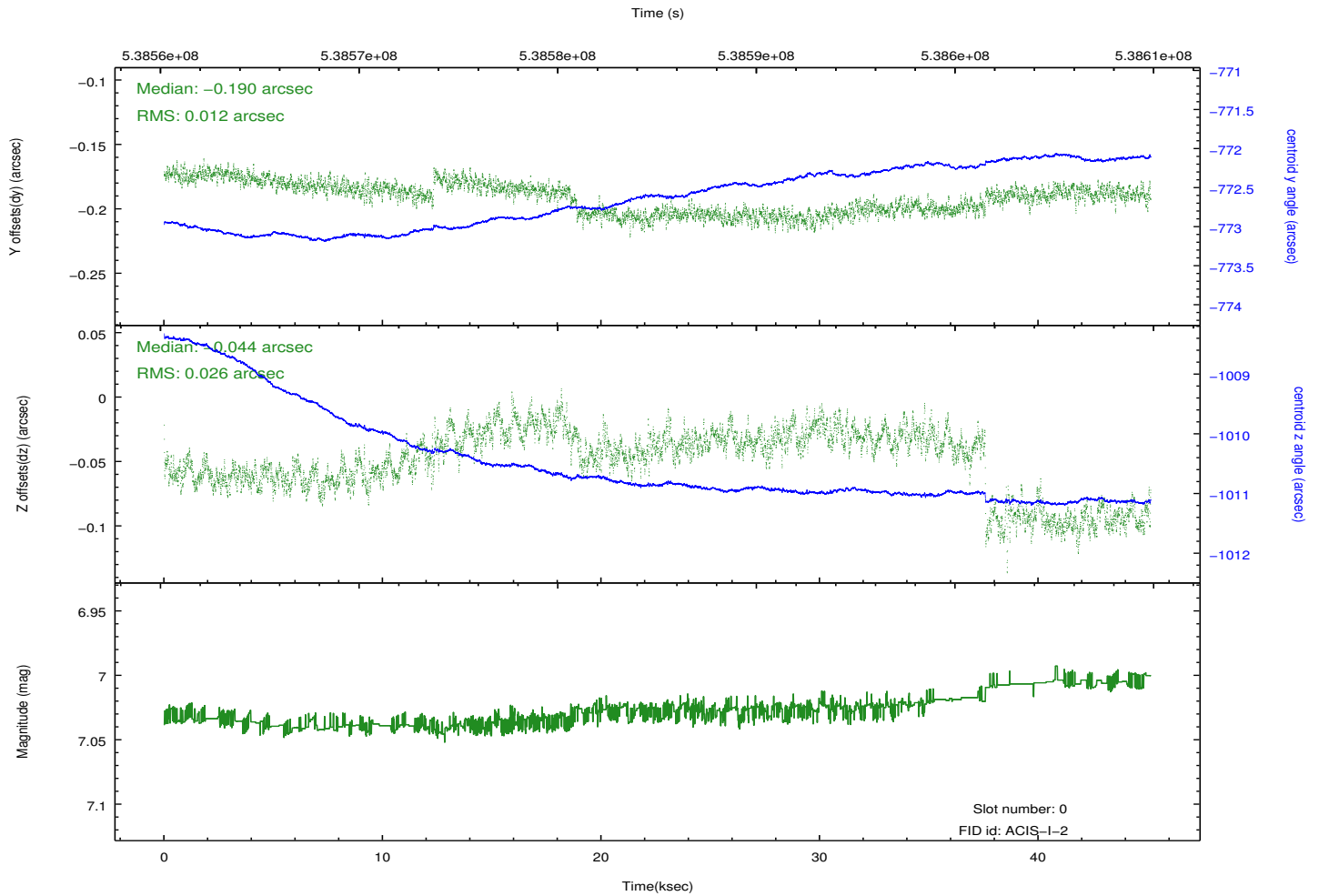
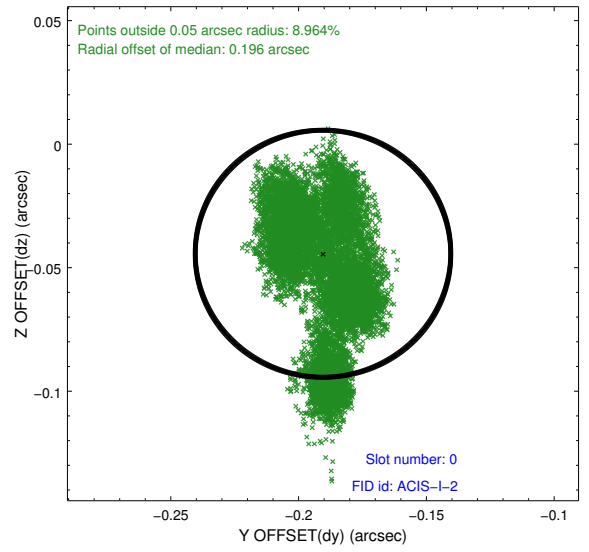
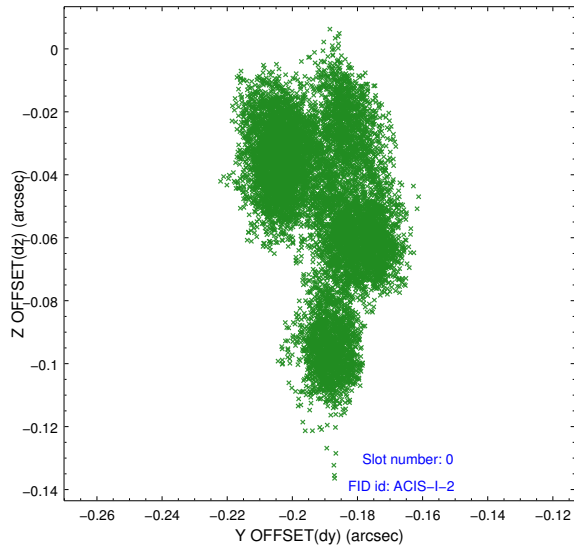


2.4.5 Slot 7

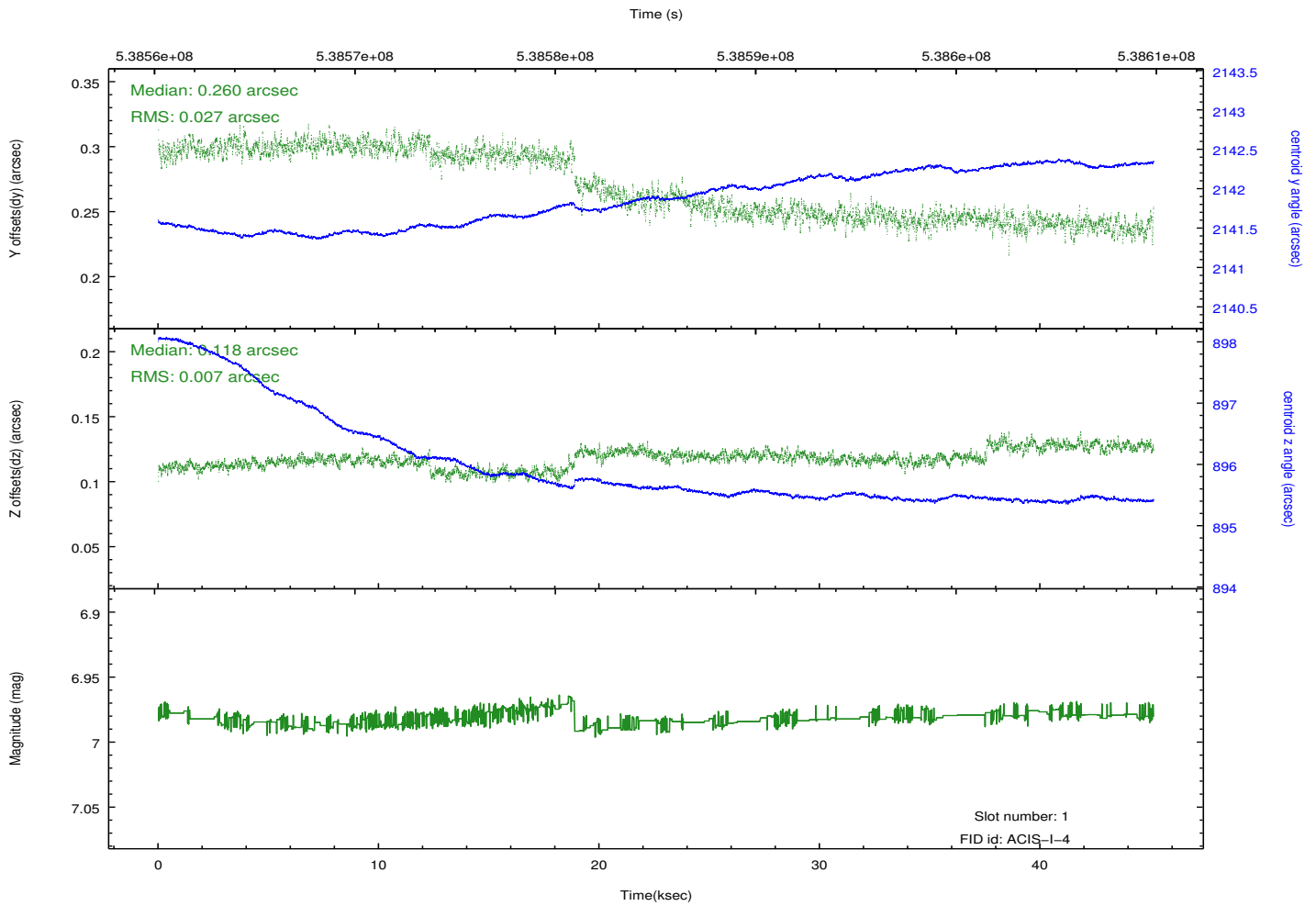
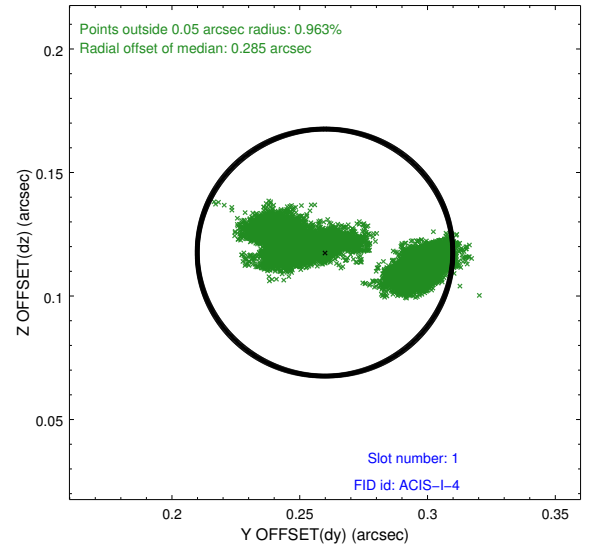
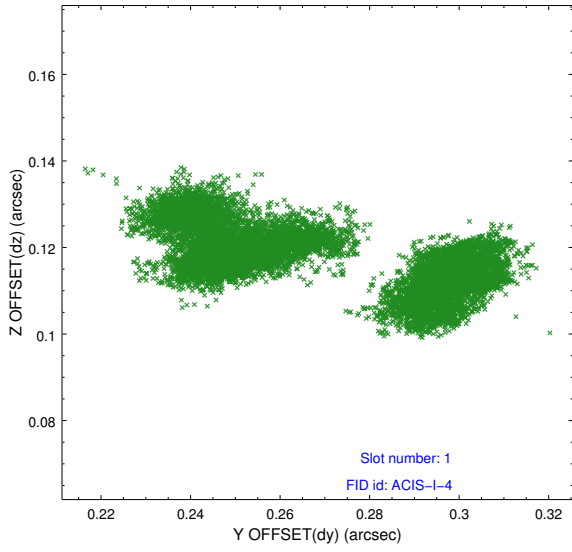


2.5 FID Slots

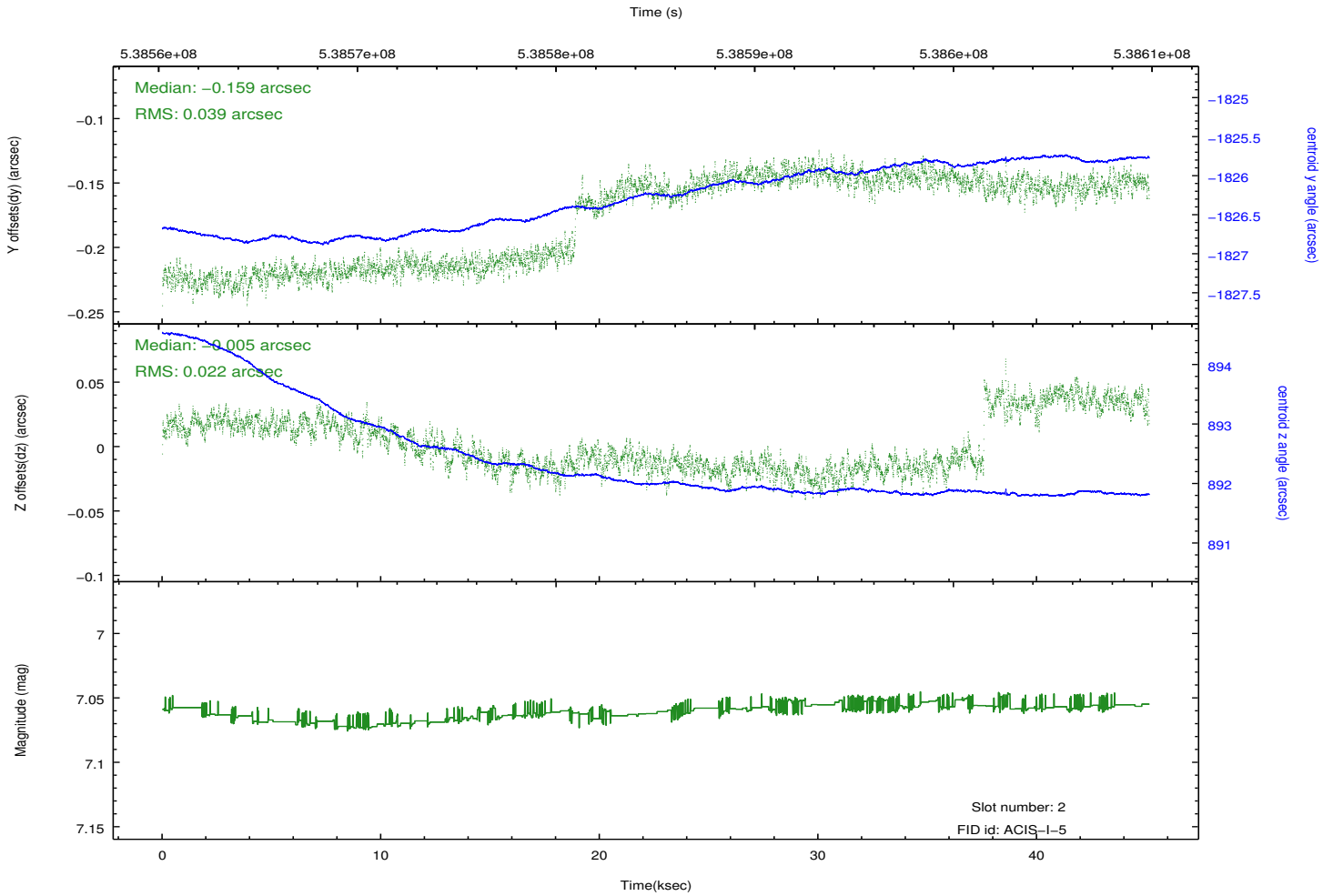
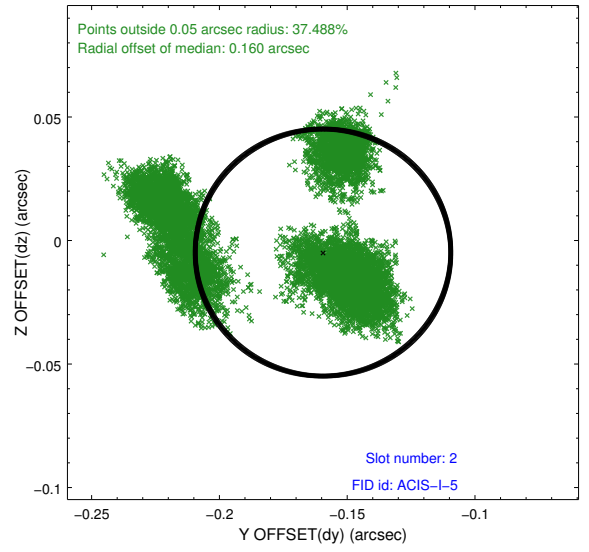
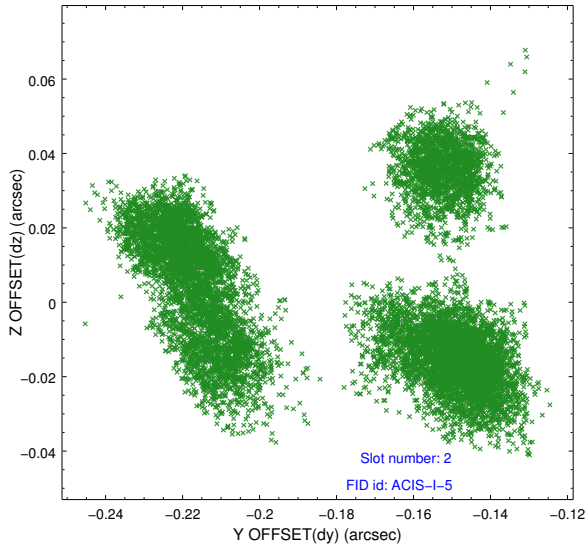
2.5.1 Slot 0



2.5.2 Slot 1



2.5.3 Slot 2



A Summary

A.1 Status

V&V Scientist	Jen Lauer
V&V Date (YYYY-MM-DD)	2015.01.26
V&V Edition	1
V&V Disposition and Status	OK
V&V Charge Time	44.395100341558

A.2 Comments