

V&V Reference Report

L2 ASCDS Version : 10.3.3

Observation 17661 - L2 Version 1
Chandra X-Ray Center

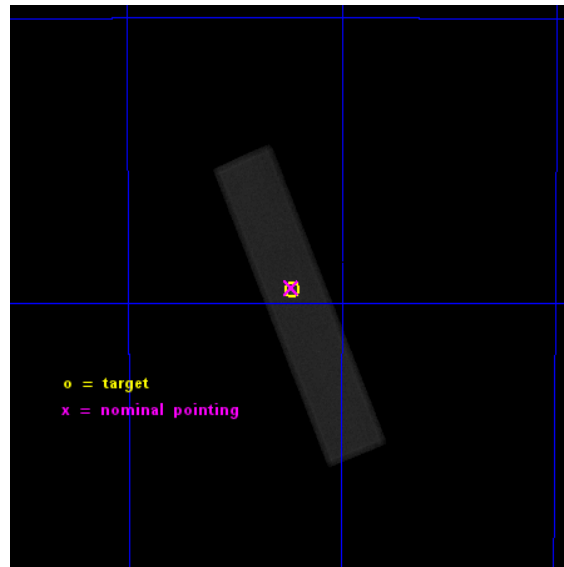
L2 Processing Date : May 25 2015

Contents

1	Front	2
2	OBI	3
2.1	OBI	3
2.1.1	Images	3
2.1.2	Parameters	4
2.1.3	Events	4
2.2	Compared Parameters	5
2.3	Aspect	6
2.4	Star Slots	9
2.4.1	Slot 3	9
2.4.2	Slot 4	10
2.4.3	Slot 5	11
2.4.4	Slot 6	12
2.5	FID Slots	13
2.5.1	Slot 0	13
2.5.2	Slot 1	14
2.5.3	Slot 2	15
A	Summary	16
A.1	Status	16
A.2	Comments	16

1 Front

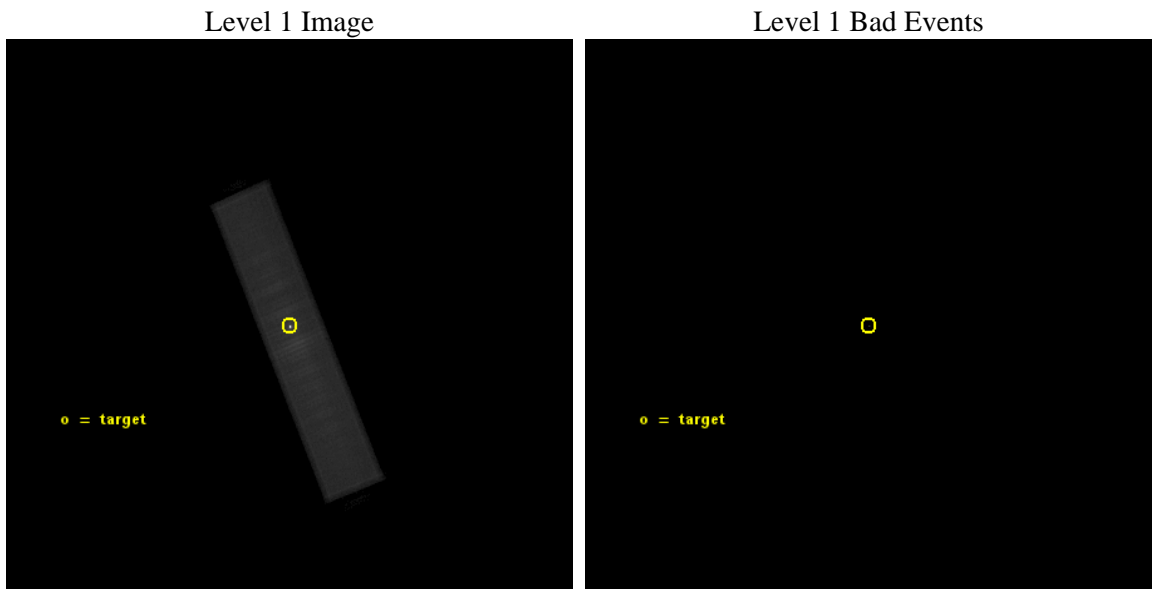
seq_num	401692	Sequence number
obs_id	17661	Observation id
title	The Structure of the Accretion Flow in SAX J1808.4-3658 at Low Luminosities.	Proposal title
observer	Dr. Alessandro Patruno	Principal investigator
object	SAX J1808.4-3658	Source name
ra_targ	272.115	Observer's specified target RA [deg]
dec_targ	-36.978694	Observer's specified target Dec [deg]
ra_nom	272.11740673422	Nominal RA [deg]
dec_nom	-36.974098363592	Nominal Dec [deg]
roll_nom	67.497808112586	Nominal Roll [deg]
revision	1	Processing version of data
ontime	29765.232921243	[s]
livetime	29637.59446211	Ontime multiplied by DTCOR
l2events	1499494	Number of level 2 events



2 OBI

2.1 OBI

2.1.1 Images



2.1.2 Parameters

obi_num	1	Obi number	sched_exp_time	30000.000000	[s] Scheduled observation exposure time
ascdsver	10.3.3	Processing system revision	ontime	29765.232921243	[s]
caldbver	4.6.7	 	l1events	1868727	Number of level 1 events
date	2015-05-25T15:43:36	Date and time of file creation			
revision	1	Processing version of data			

2.1.3 Events

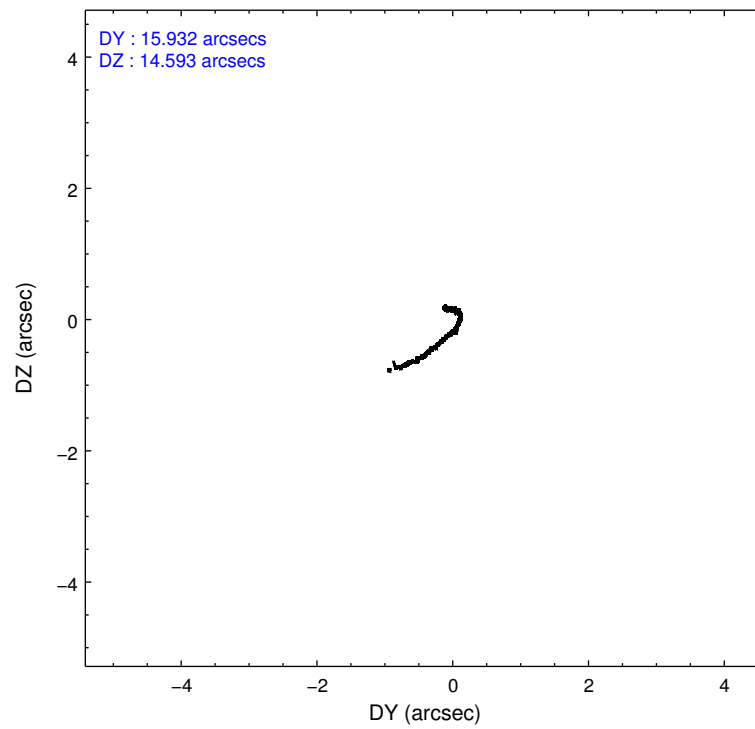
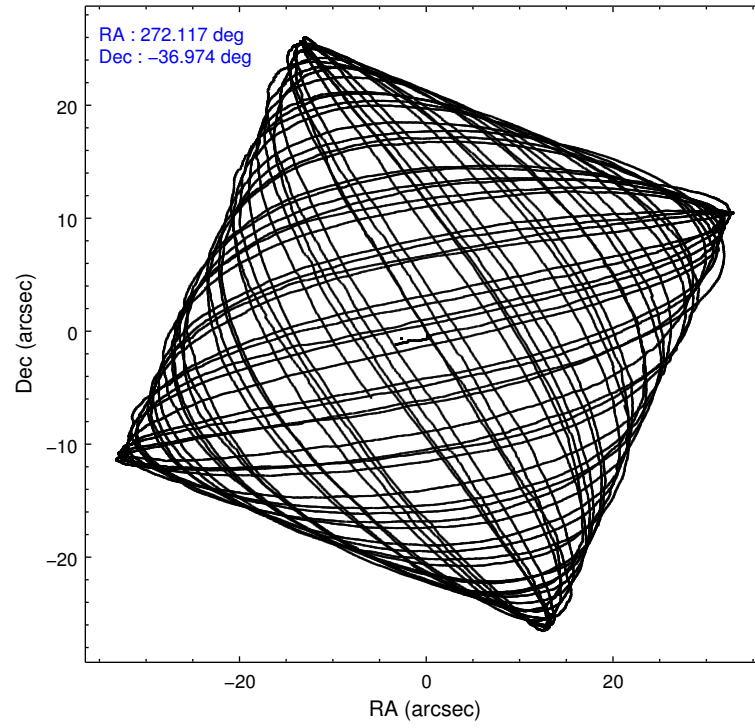
Level 1 Events

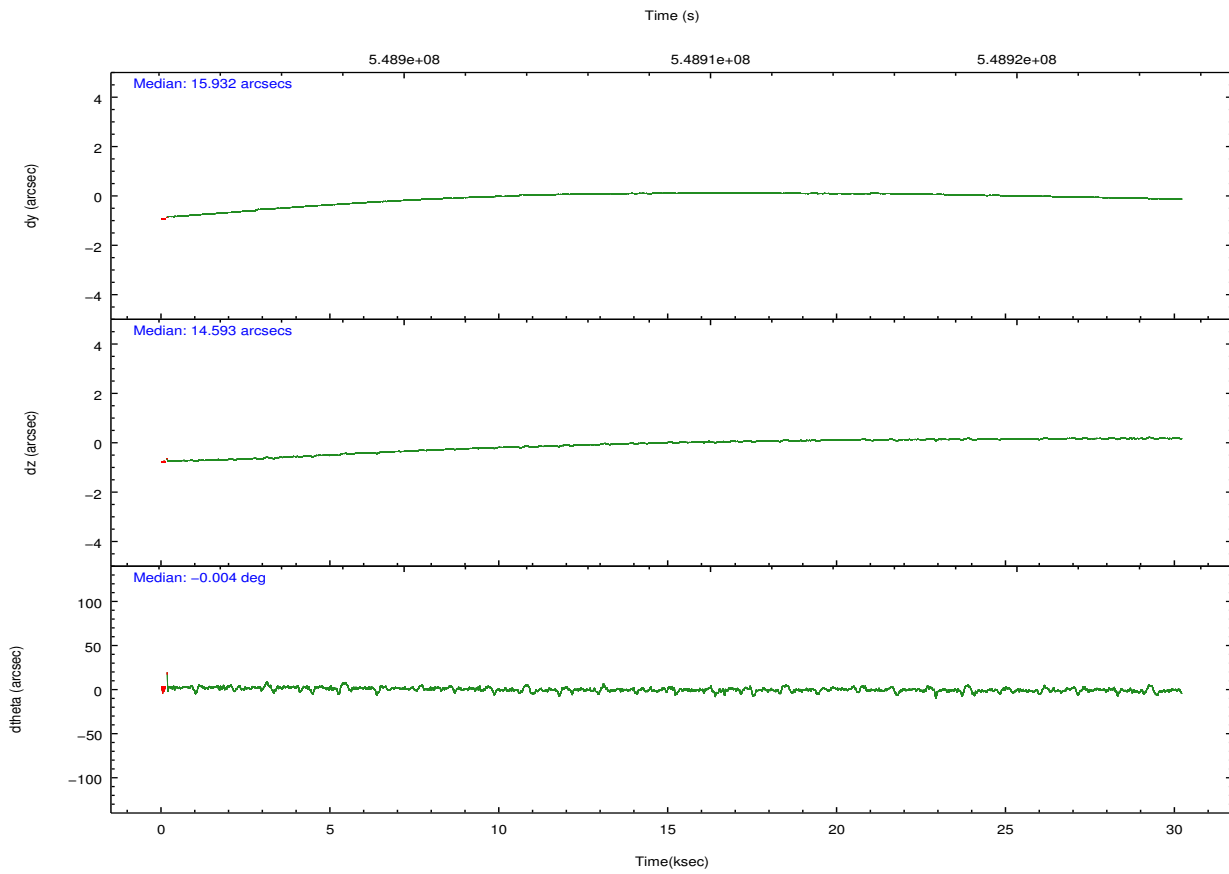
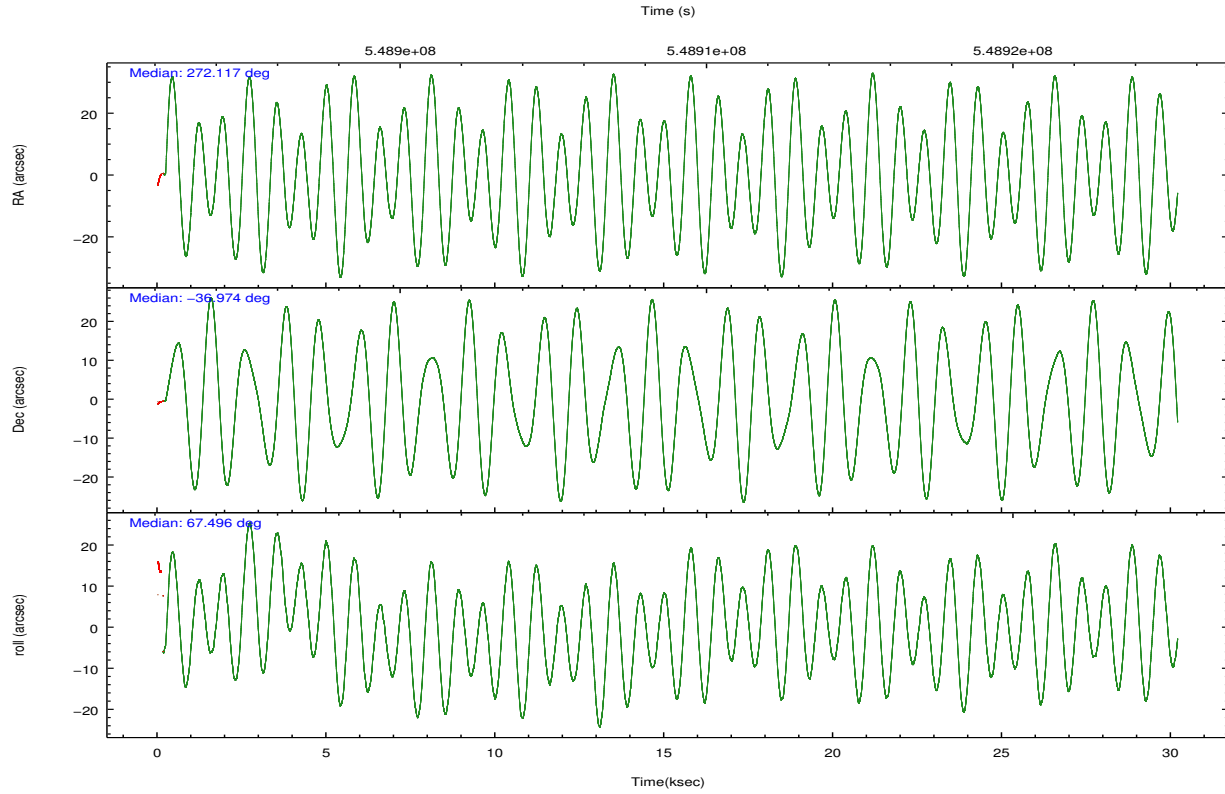
	segment 1	segment 2	segment 3
level 1 events	1565	1867156	6
rejected events	12	5324	4
rejected %	0%	0%	66%

2.2 Compared Parameters

Parameter	Planned	Actual	Parameter	Planned	Actual
Instrument	HRC	HRC	Obspar format version number	7	7
Detector	HRC-S	HRC-S	Obspar file type	PREDICTED	ACTUAL
Grating	NONE	NONE	Obspar update status	NONE	UPDATED
Data mode	OBSERVING	OBSERVING			
Observation mode	POINTING	POINTING			
[deg] Pointing RA	272.123825	272.1174067342199			
[deg] Pointing Dec	-37.002566	-36.97409836359157			
[deg] Pointing Roll	67.434328	67.49780811258627			
[mm] SIM focus pos	-1.533336	-1.526339935833849			
[mm] SIM defocus	7.710433287538843e-07	0.006996703570447904			
[mm] SIM translation stage pos	250.455976	250.4635187648994			
[mm] SIM translation stage offset	0	-0.007540371344731511			
[s] Observation start time (MET)	548893849.184000	548892967.1352201			
Observation start date	2015-05-24T22:29:42	2015-05-24T22:16:07			
[s] Observation end time (MET)	548923849.184000	548924897.93701			
Observation end date	2015-05-25T06:49:42	2015-05-25T07:08:17			

2.3 Aspect





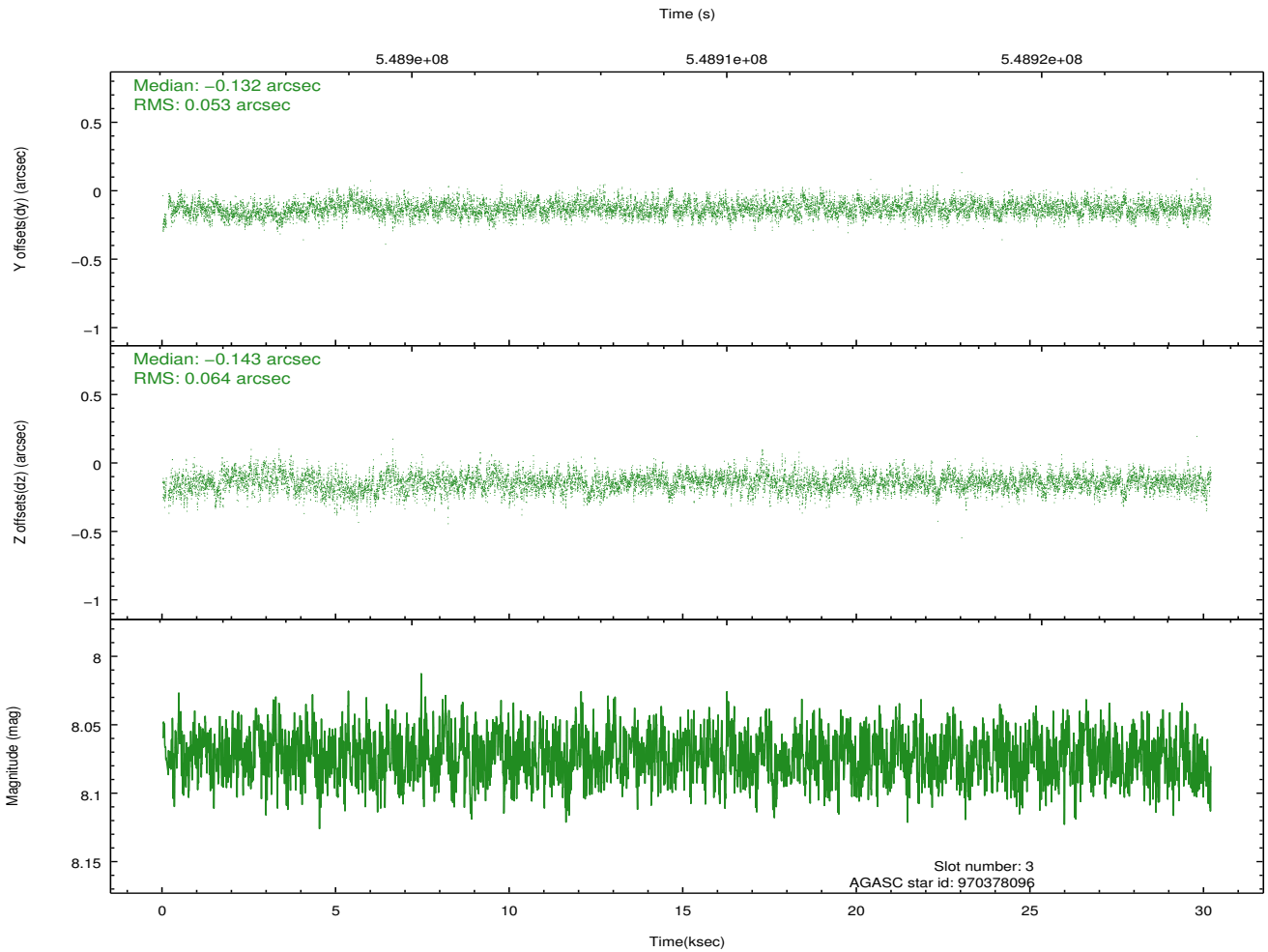
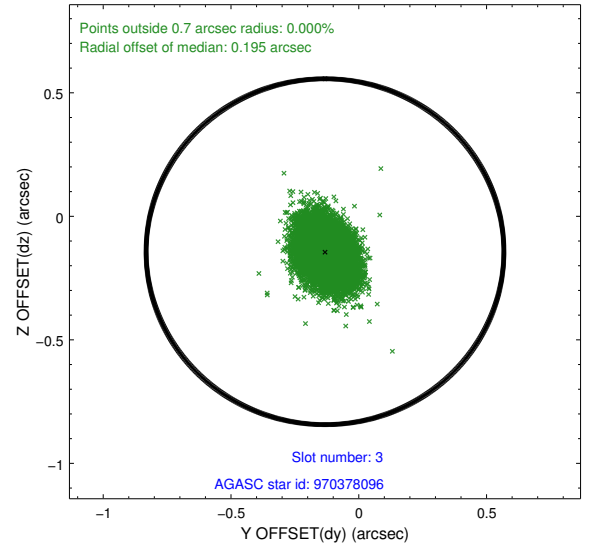
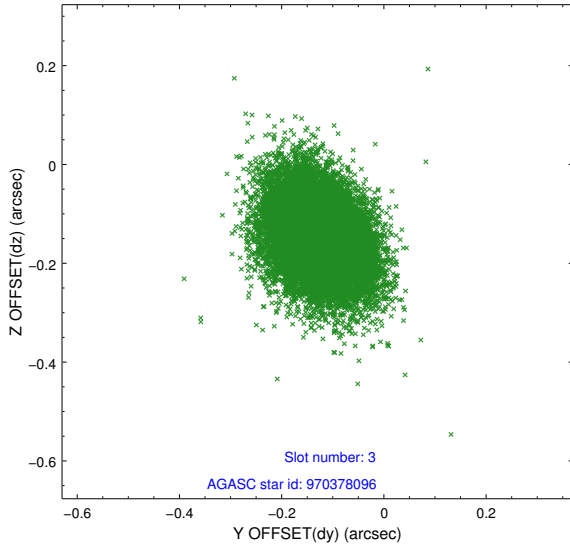
Slot Statistics

slot	status	used	id	mag	n_pts	med_dy	med_dz	dr1	dr2	ra	dec	mean_y	mean_z
0	FID		HRC-S-1	7.00	7351	0.019	-0.243	0.015	0.039	0.000000	0.000000	-1170.31	-463.34
1	FID		HRC-S-3	7.00	7351	0.058	-0.002	0.016	0.035	0.000000	0.000000	-1173.15	566.35
2	FID		HRC-S-4	6.94	7350	0.310	-0.052	0.009	0.019	0.000000	0.000000	1228.05	569.00
3	GUIDE	used	970378096	8.07	14698	-0.132	-0.143	0.087	0.145	271.847050	-36.222175	2284.56	1820.02
4	GUIDE	used	970481256	7.12	14699	0.070	0.090	0.079	0.133	272.321587	-36.966000	339.47	-474.71
5	GUIDE	used	970503184	7.75	14698	-0.068	0.105	0.088	0.146	272.399123	-36.777047	1053.17	-421.77
6	GUIDE	used	970342184	6.71	14699	0.130	-0.050	0.083	0.148	271.387118	-37.471840	-2375.87	1292.47
7	MONITOR	unused		0.00	0	0.000	0.000	0.000	0.000	0.000000	0.000000	0.00	0.00

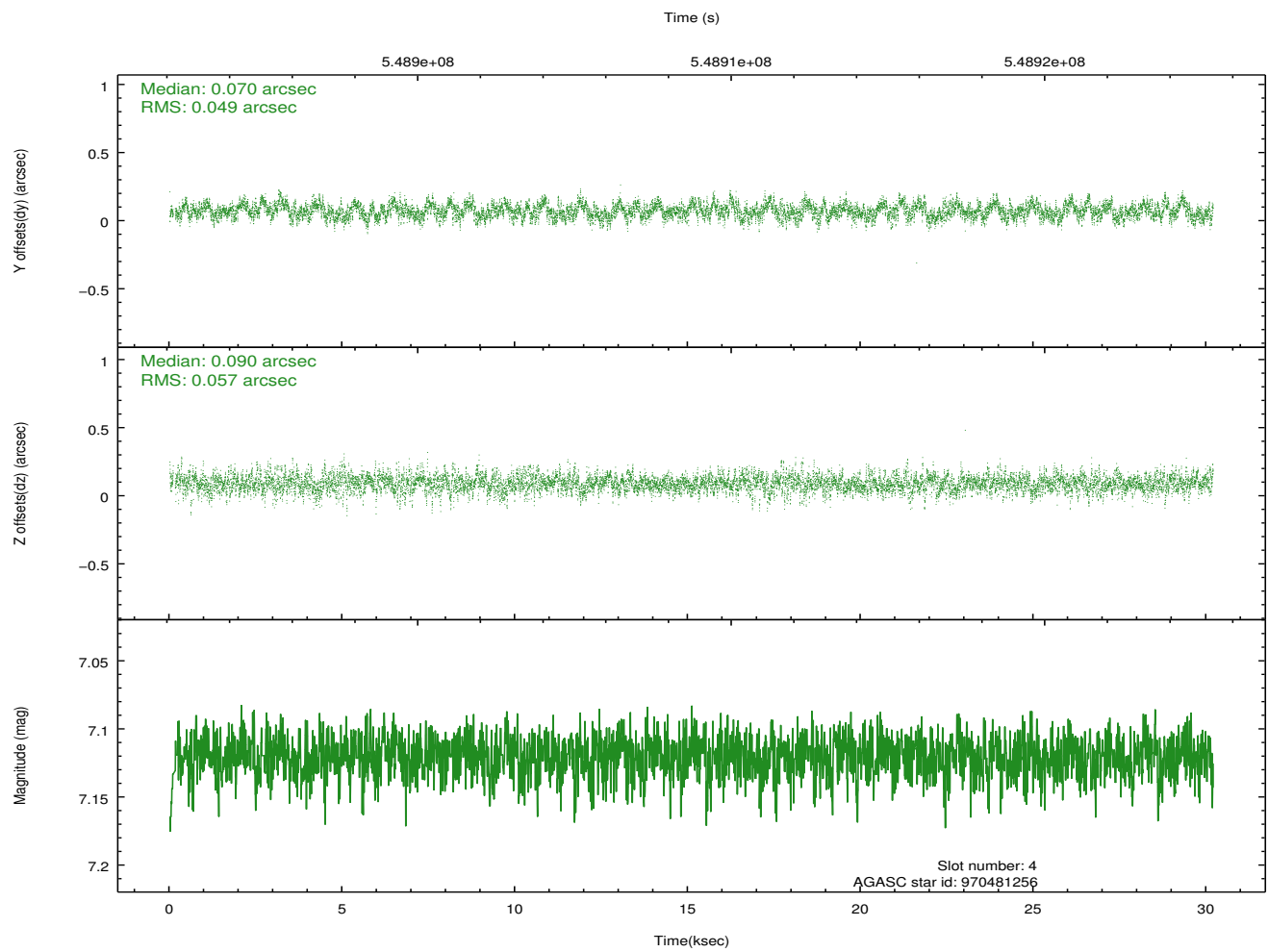
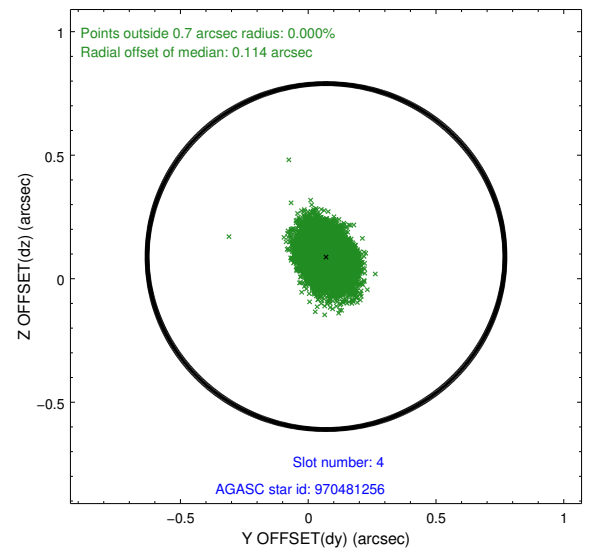
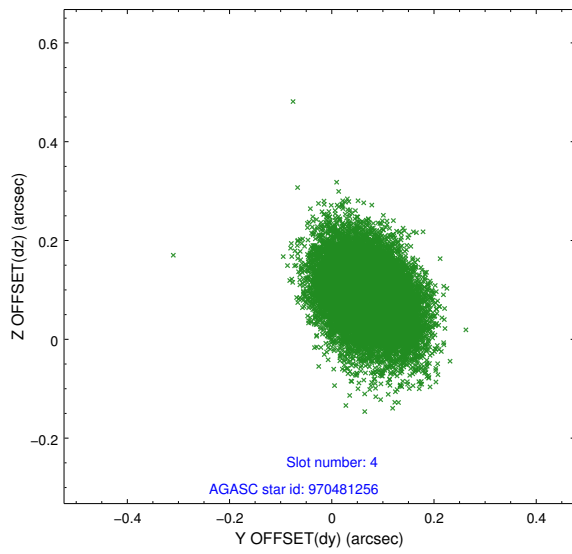
∞

2.4 Star Slots

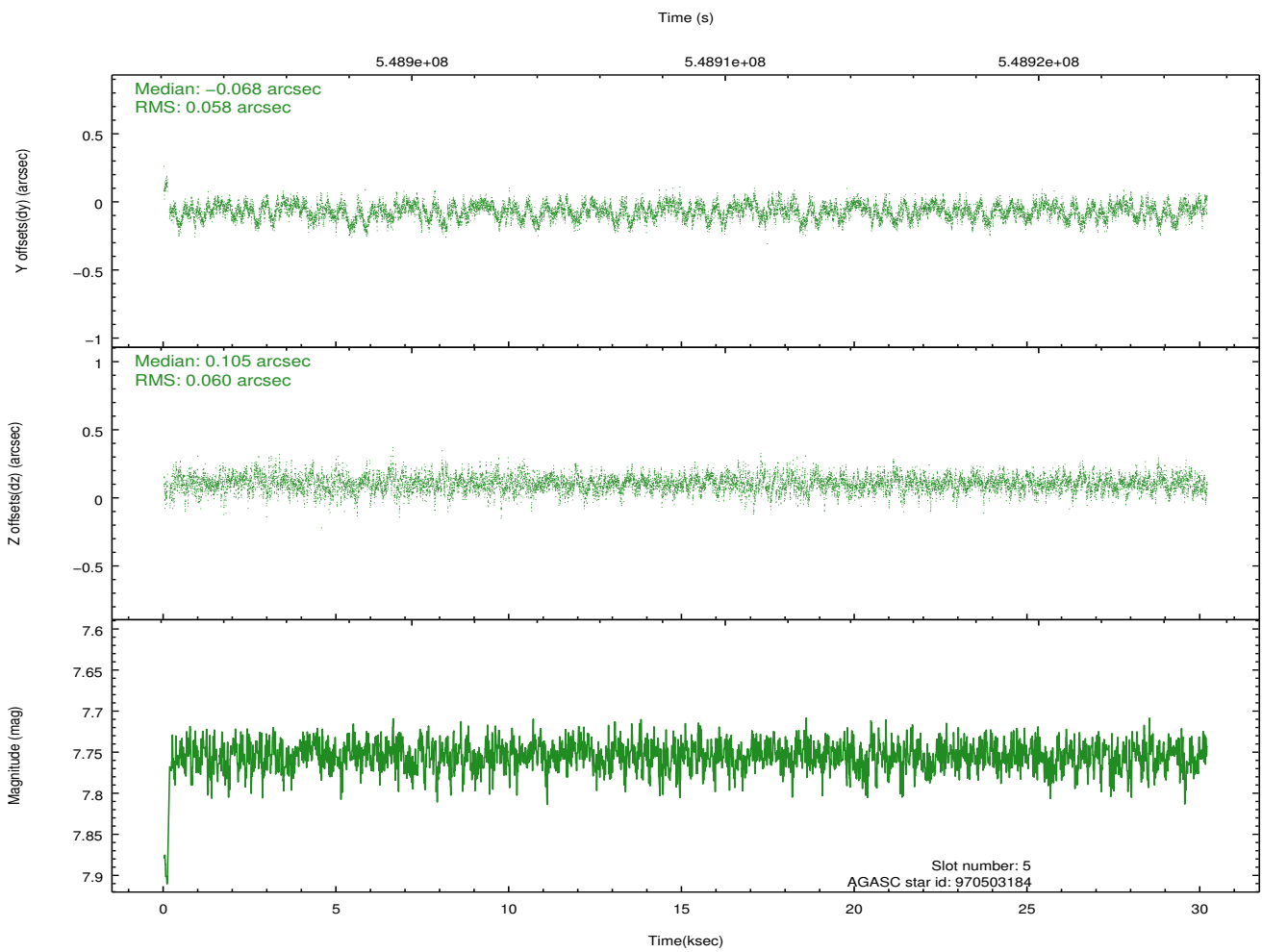
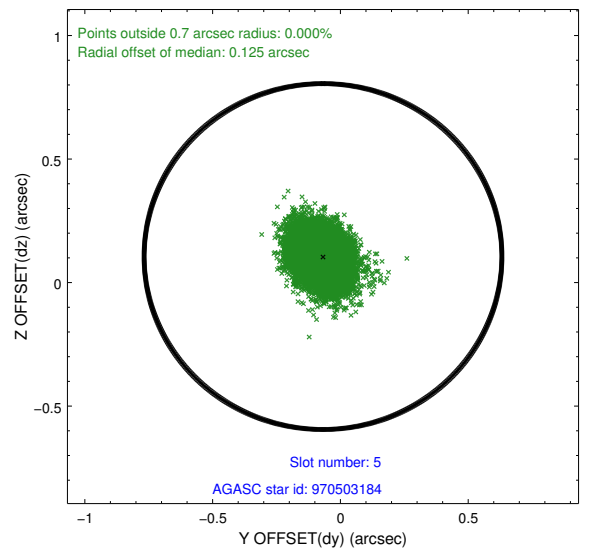
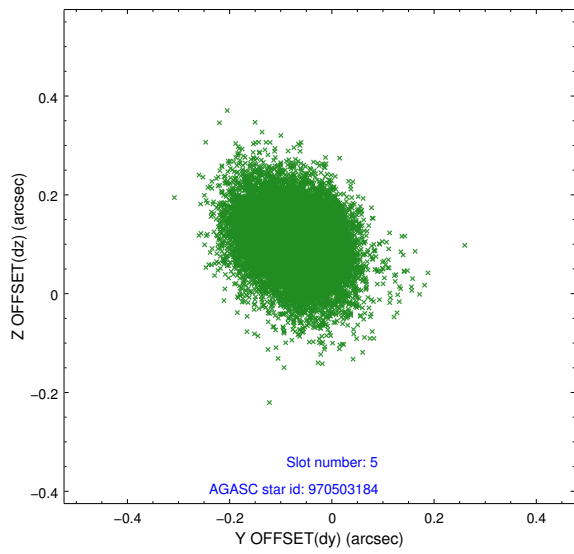
2.4.1 Slot 3



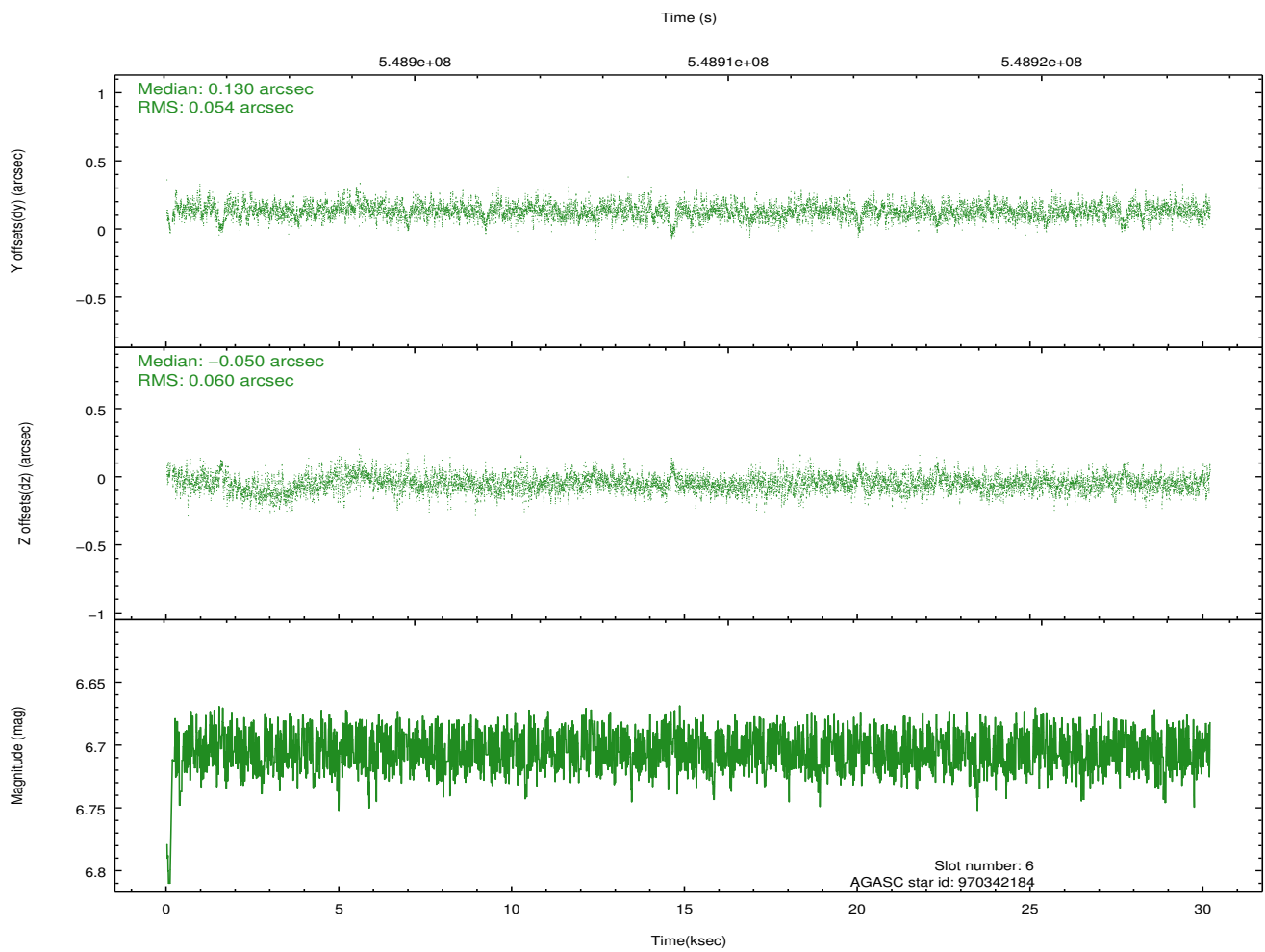
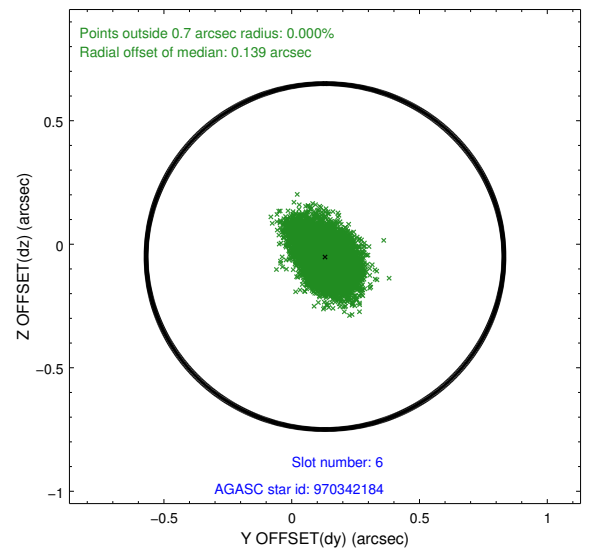
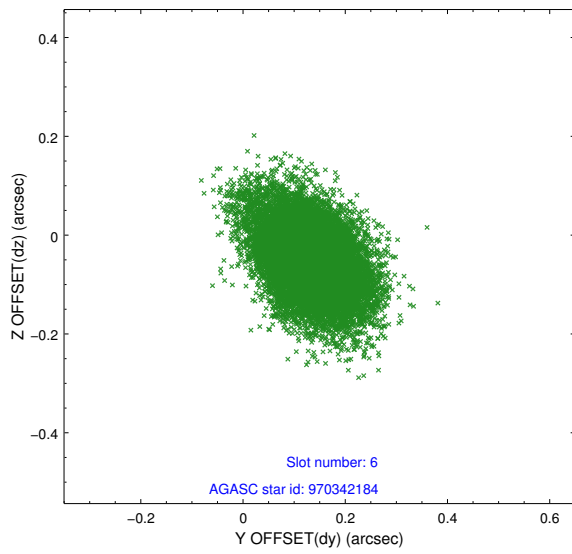
2.4.2 Slot 4



2.4.3 Slot 5

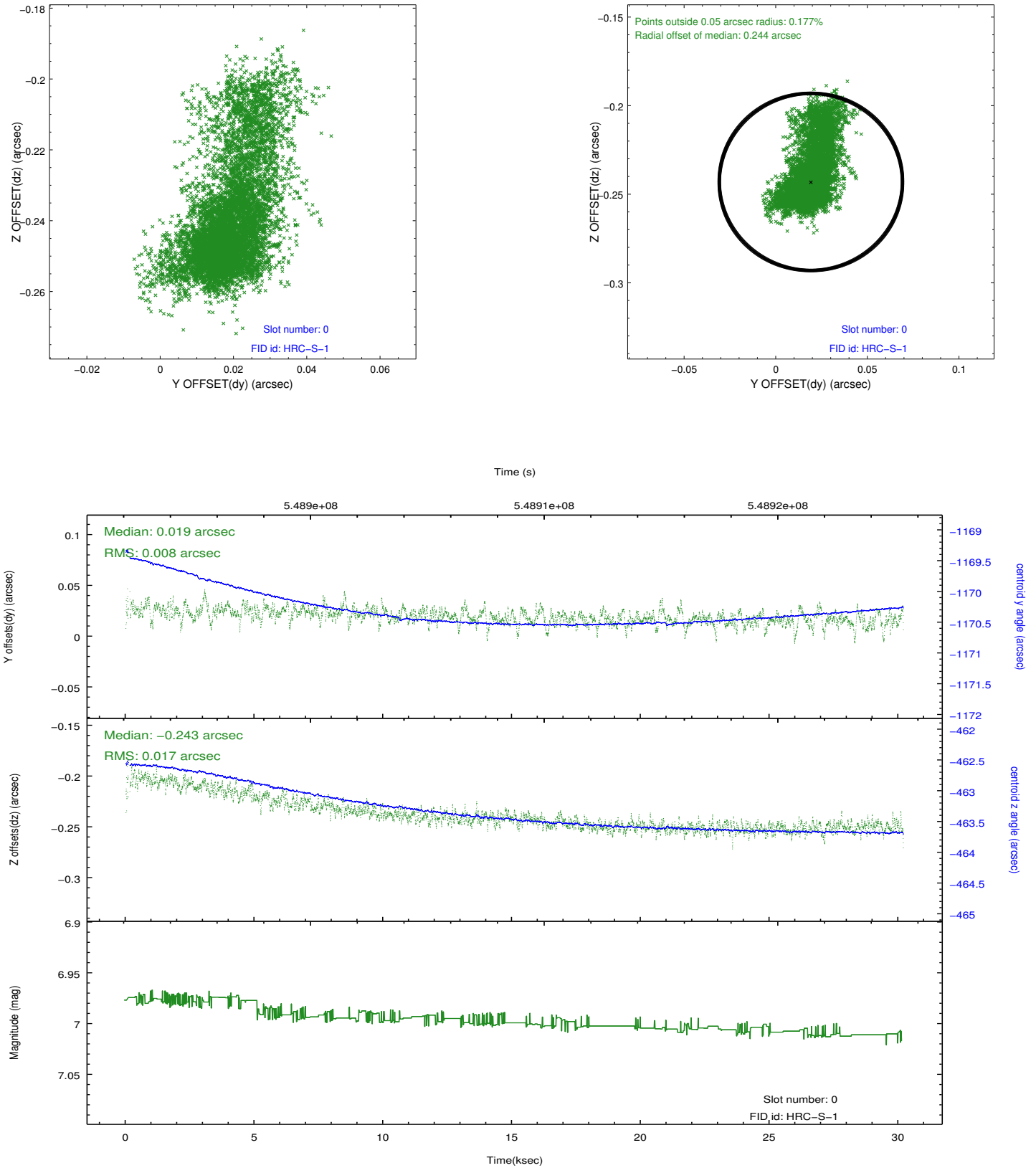


2.4.4 Slot 6

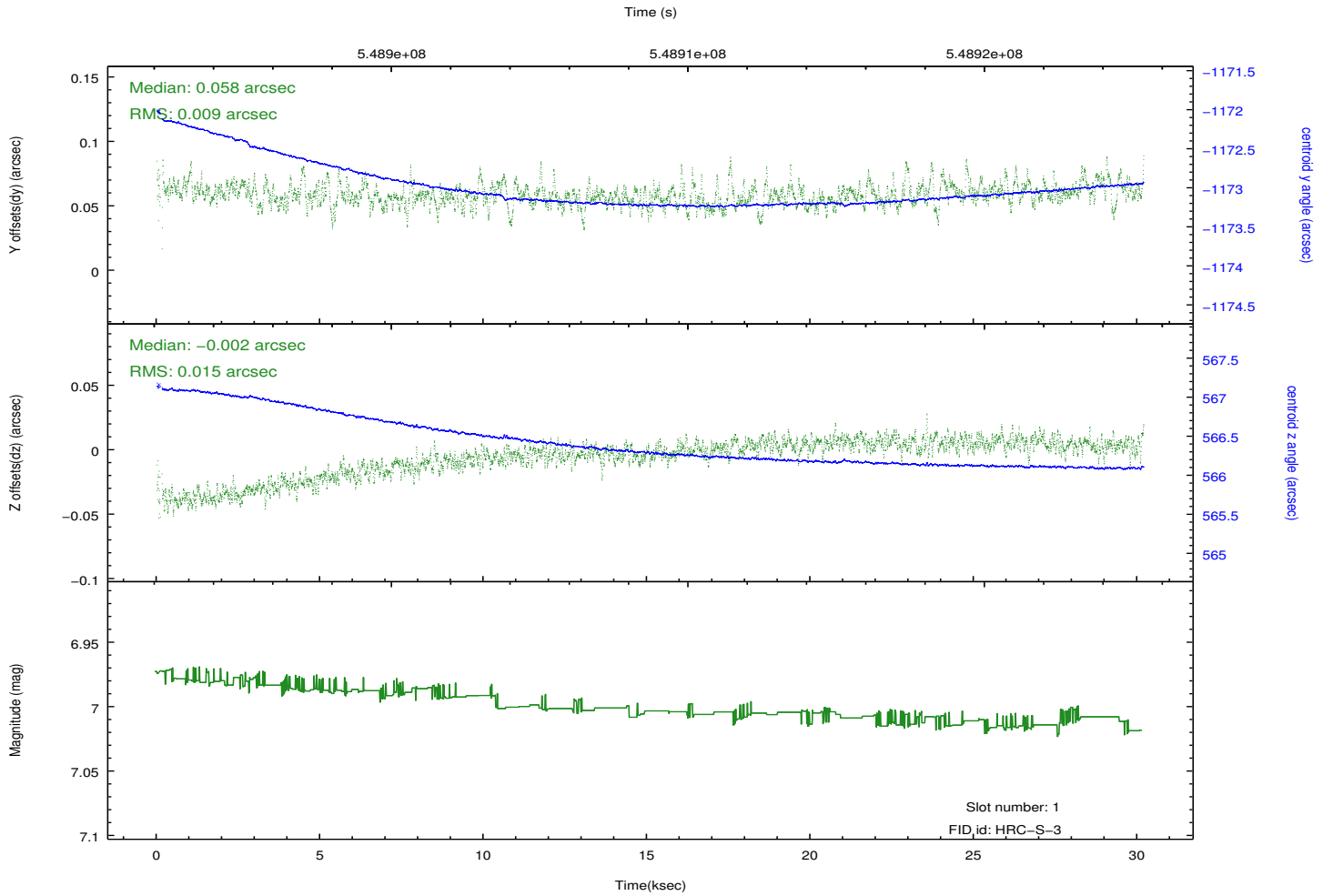
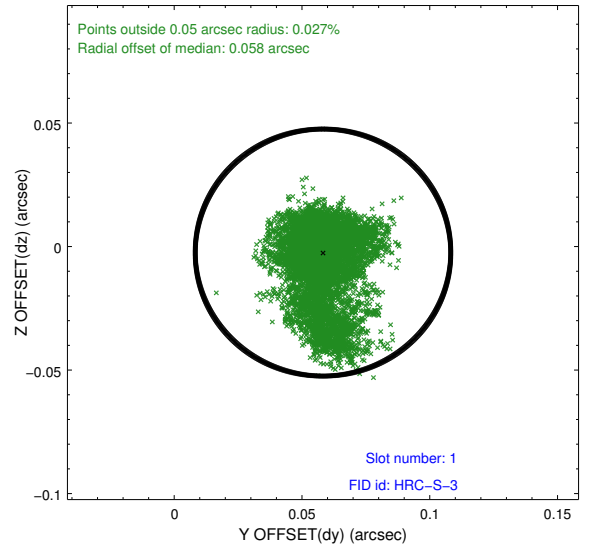
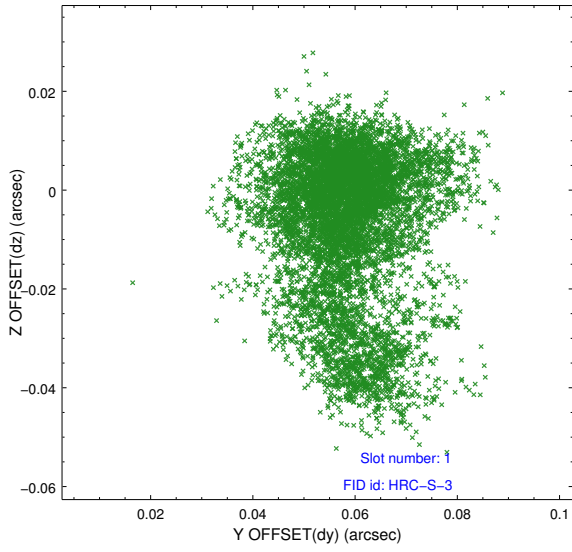


2.5 FID Slots

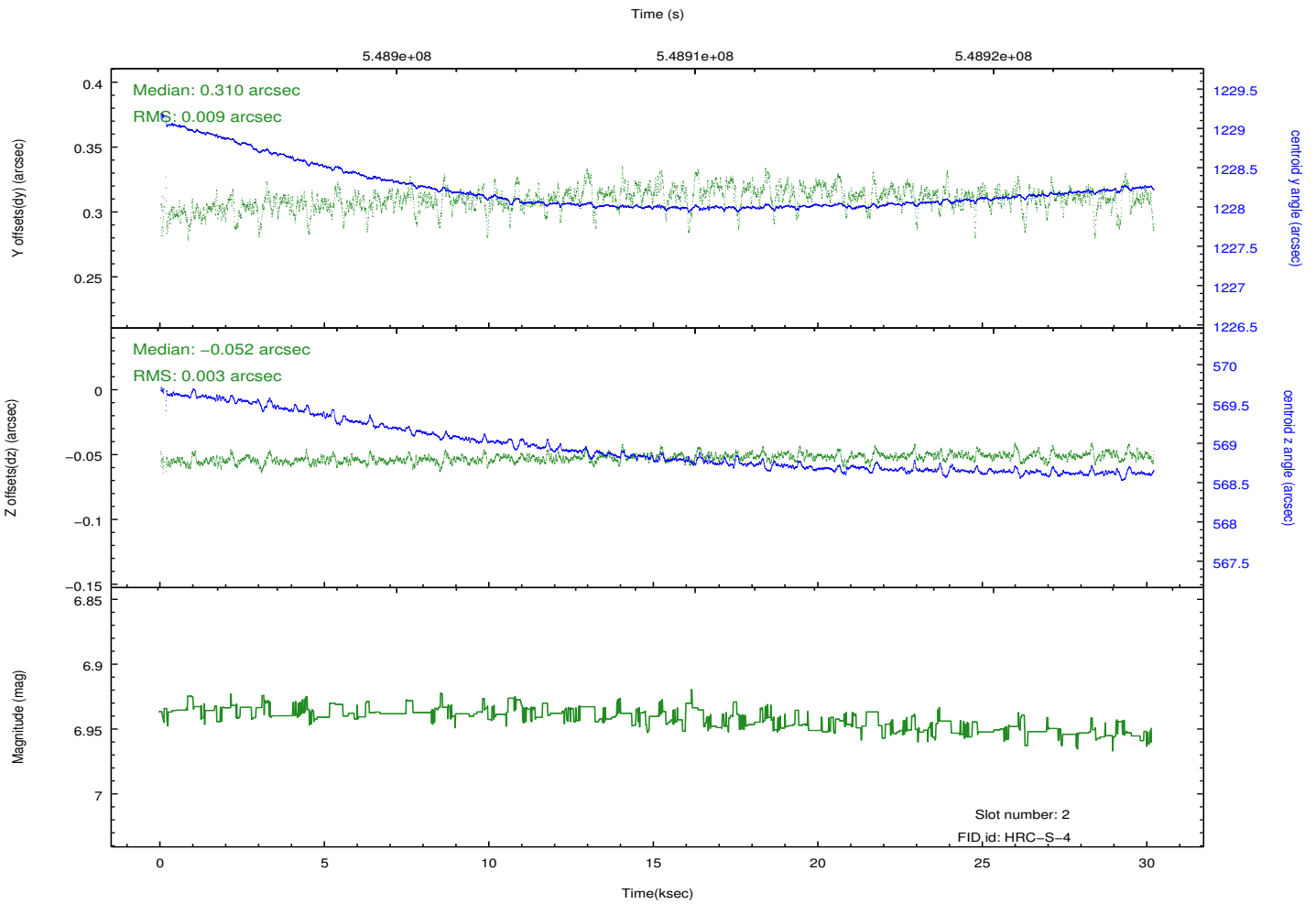
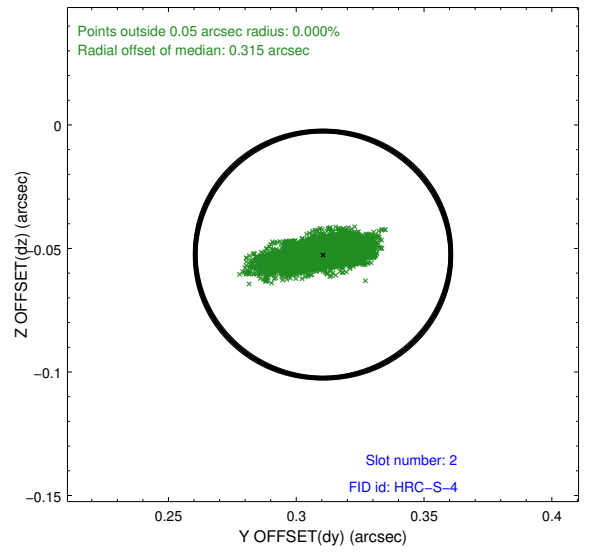
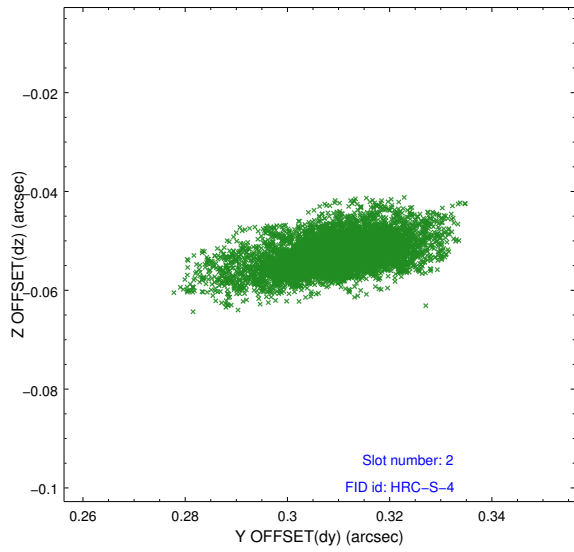
2.5.1 Slot 0



2.5.2 Slot 1



2.5.3 Slot 2



A Summary

A.1 Status

V&V Scientist	Joy Nichols
V&V Date (YYYY-MM-DD)	2015.05.26
V&V Edition	1
V&V Disposition and Status	OK
V&V Charge Time	29.765232921243

A.2 Comments

Target was monitored with slot 7 of Aspect Camera during the observation.