

V&V Reference Report

L2 ASCDS Version : 10.5

Observation 18871 - L2 Version 1
Chandra X-Ray Center

L2 Processing Date : Jun 14 2016

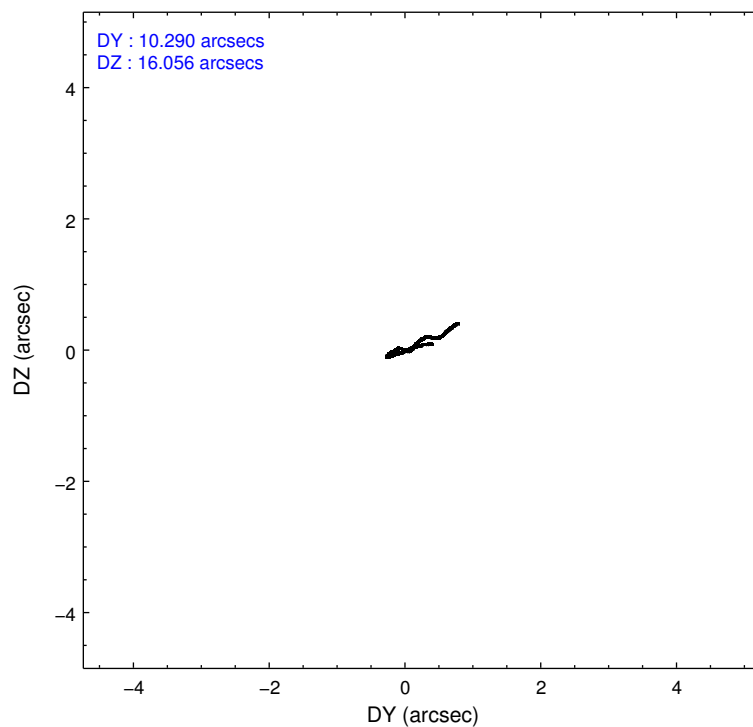
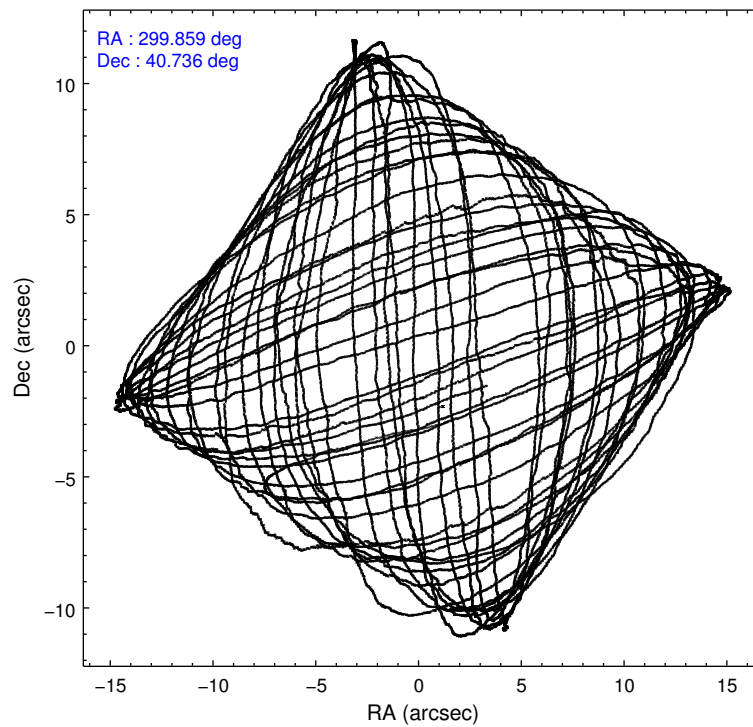
Contents

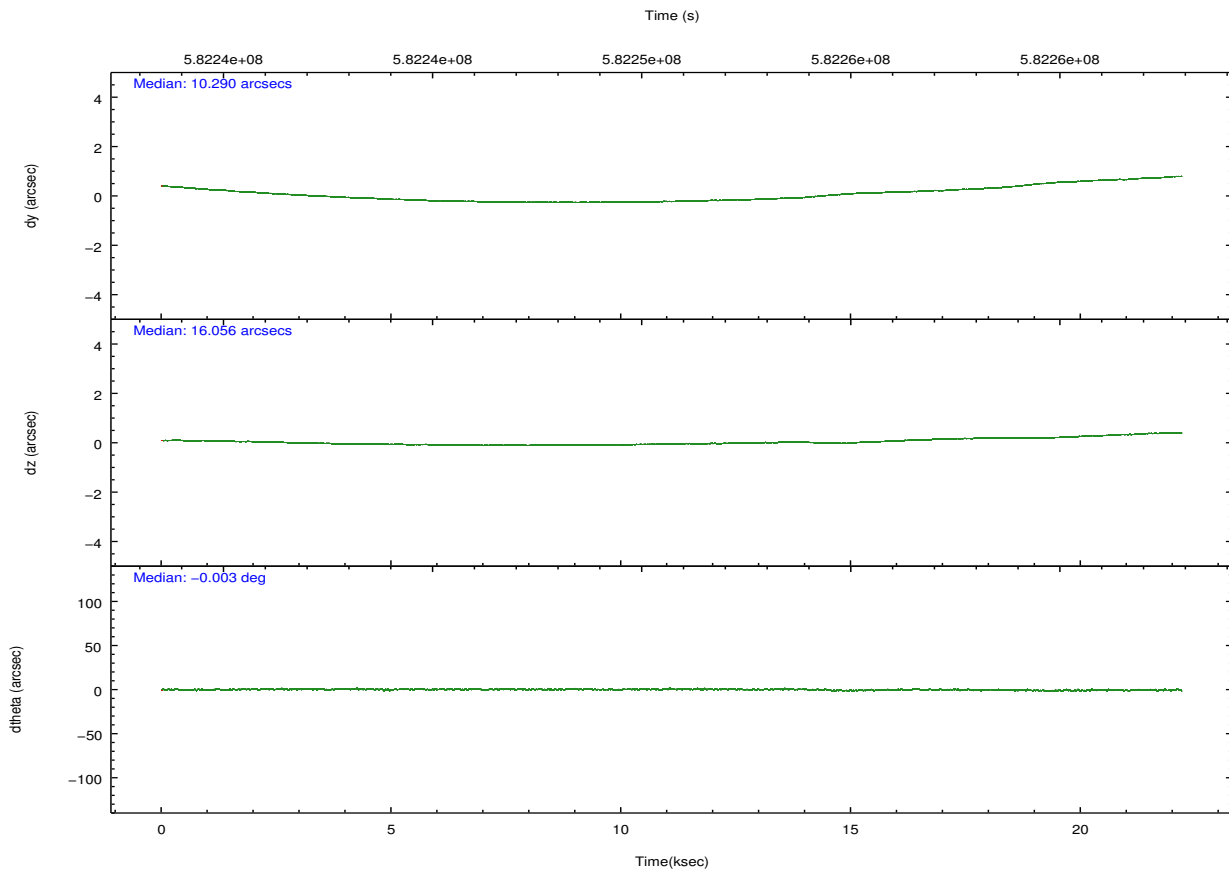
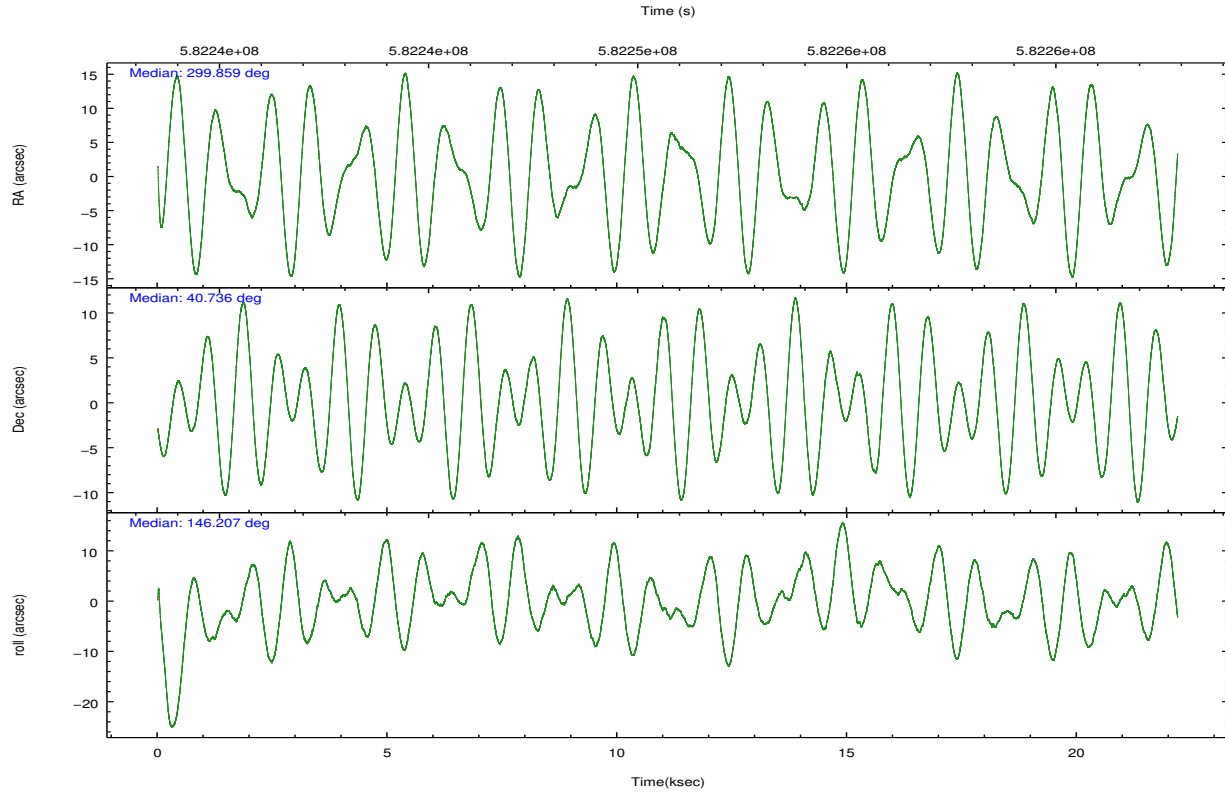
1	OBI	2
1.1	OBI	2
1.2	Aspect	3
1.3	Star Slots	5
1.3.1	Slot 3	5
1.3.2	Slot 4	6
1.3.3	Slot 5	7
1.3.4	Slot 6	8
1.3.5	Slot 7	9
1.4	FID Slots	10
1.4.1	Slot 0	10
1.4.2	Slot 1	11
1.4.3	Slot 2	12
A	Summary	13
A.1	Status	13
A.2	Comments	13

1 OBI

1.1 OBI

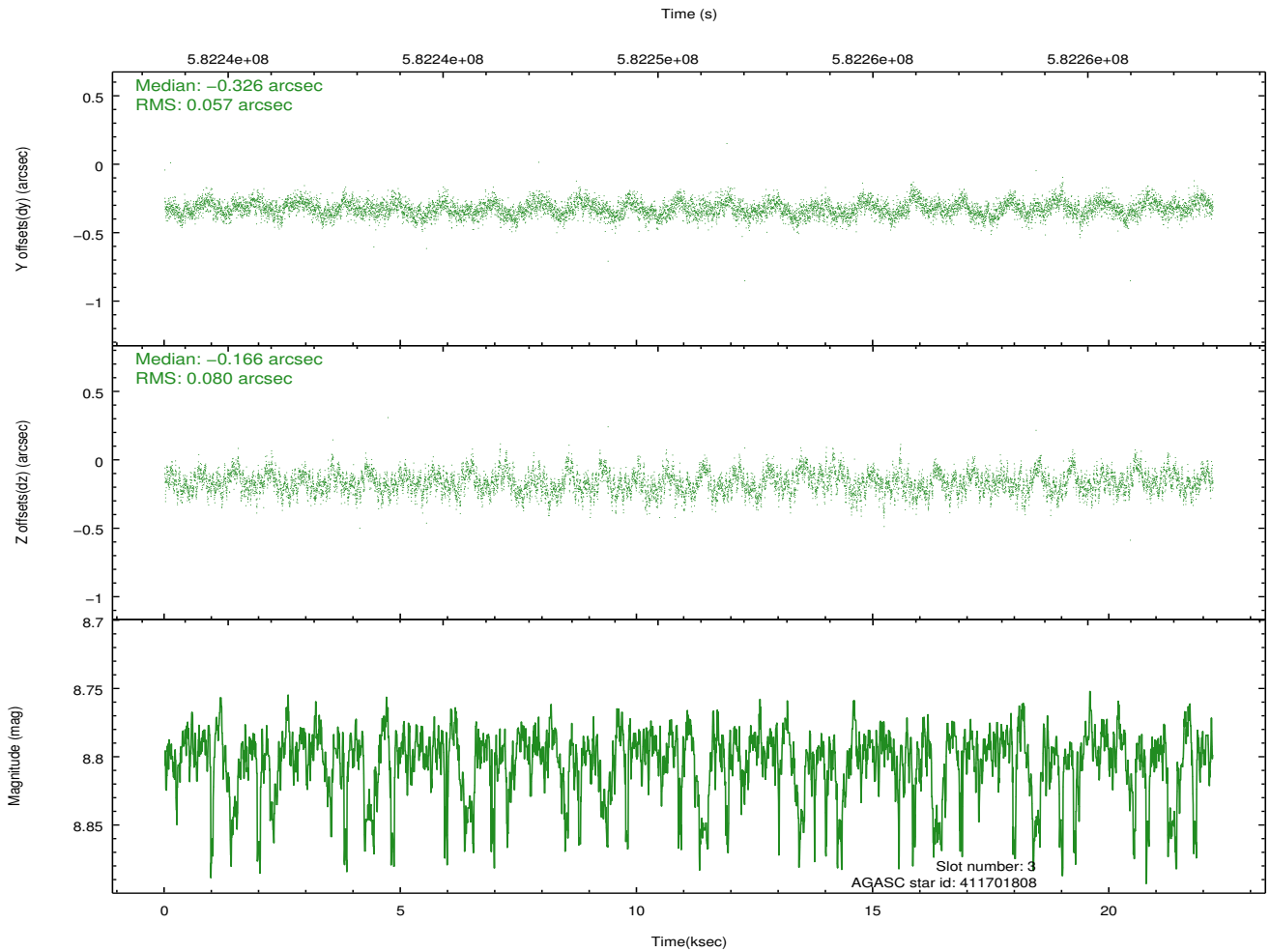
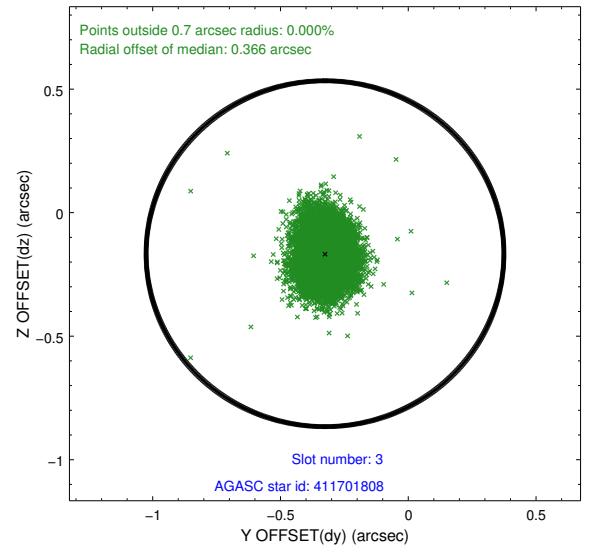
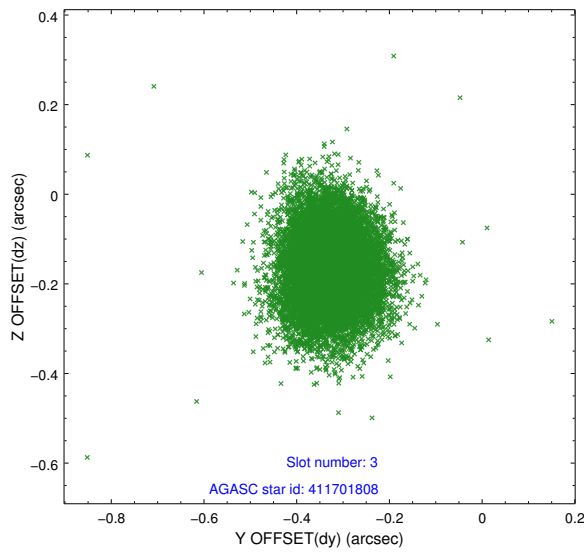
1.2 Aspect



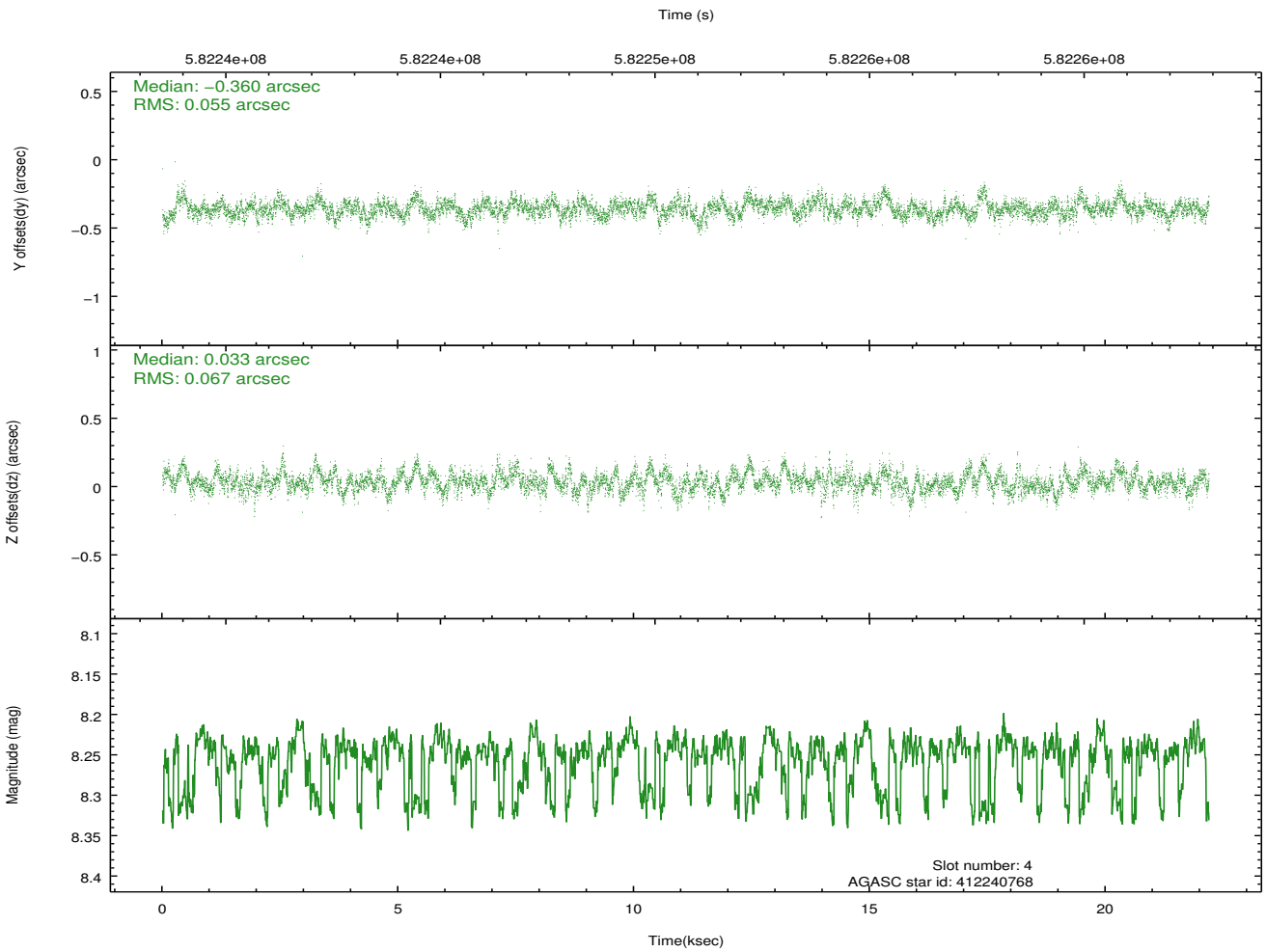
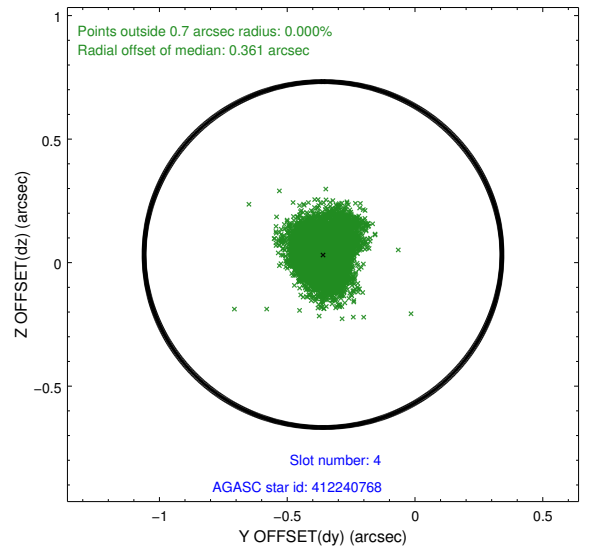
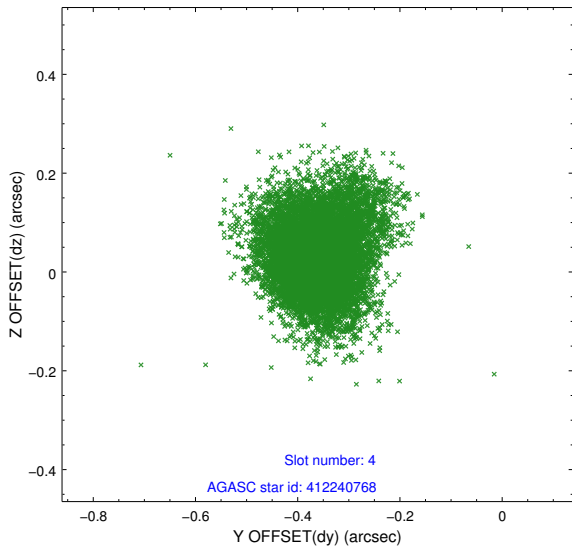


1.3 Star Slots

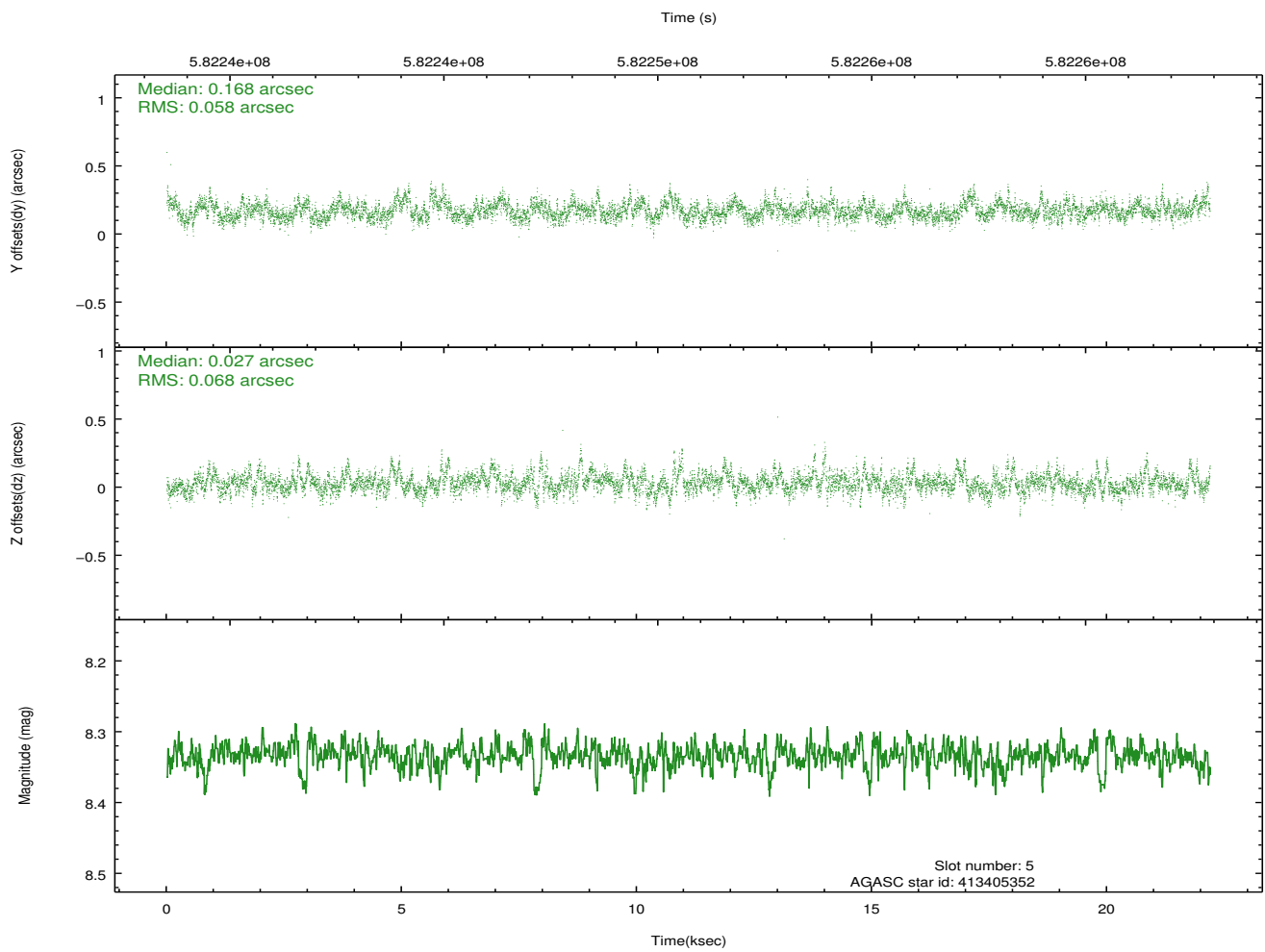
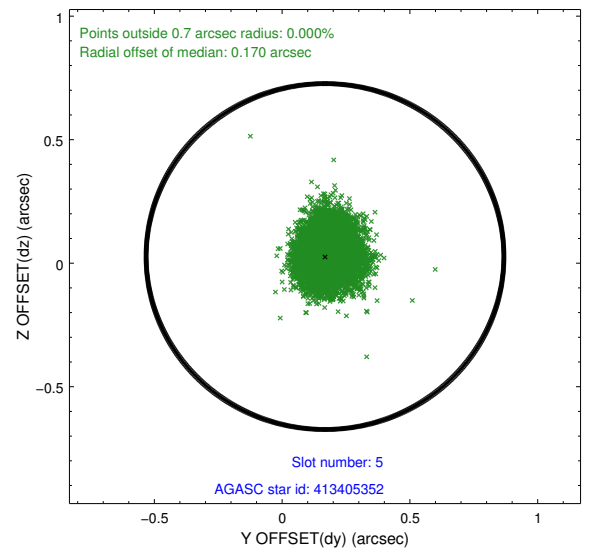
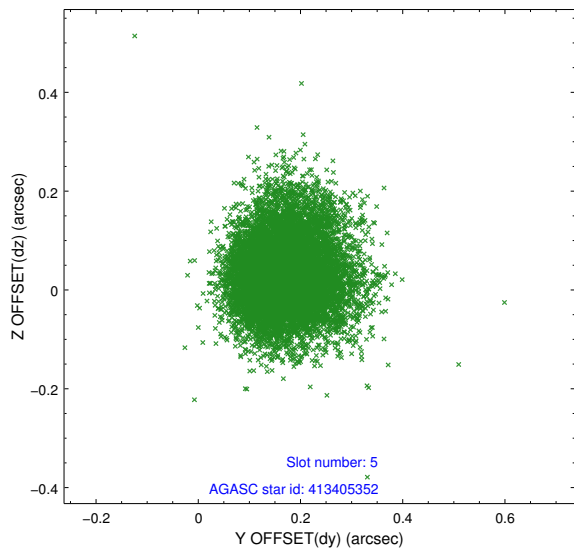
1.3.1 Slot 3



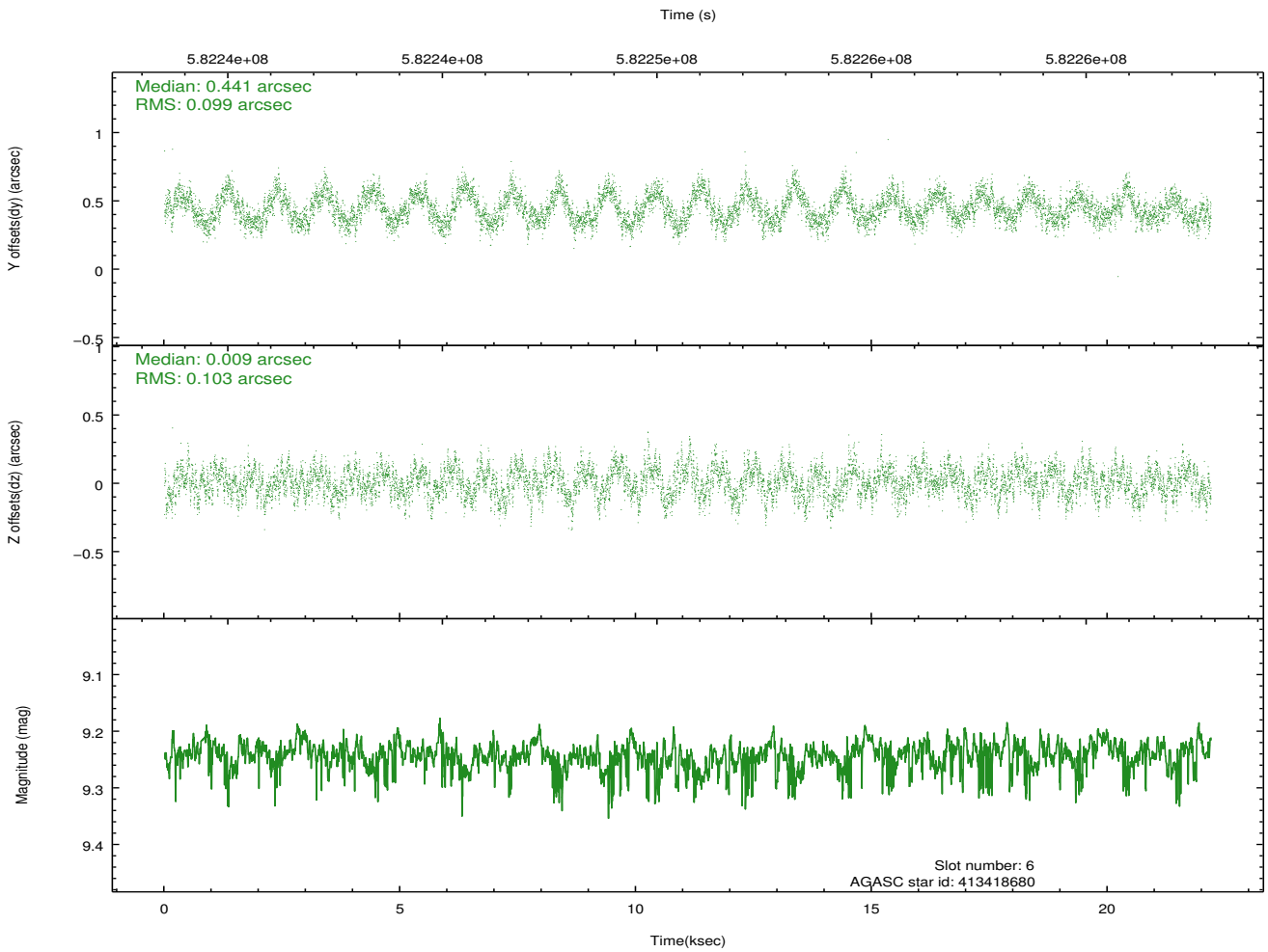
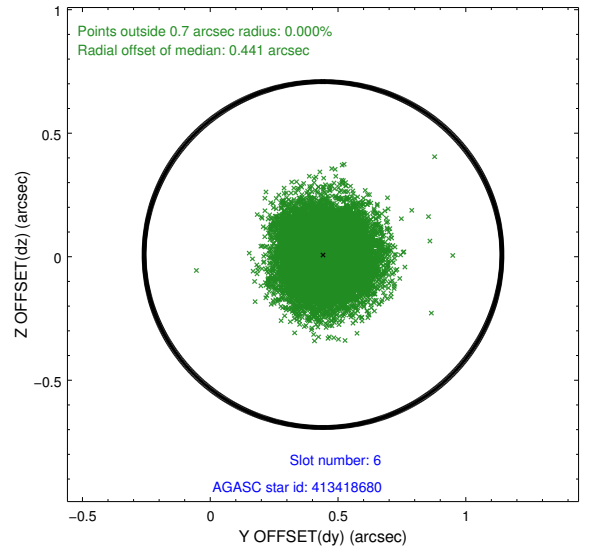
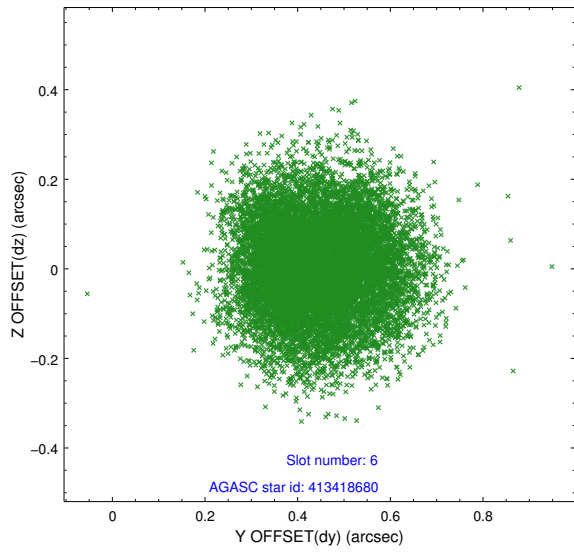
1.3.2 Slot 4



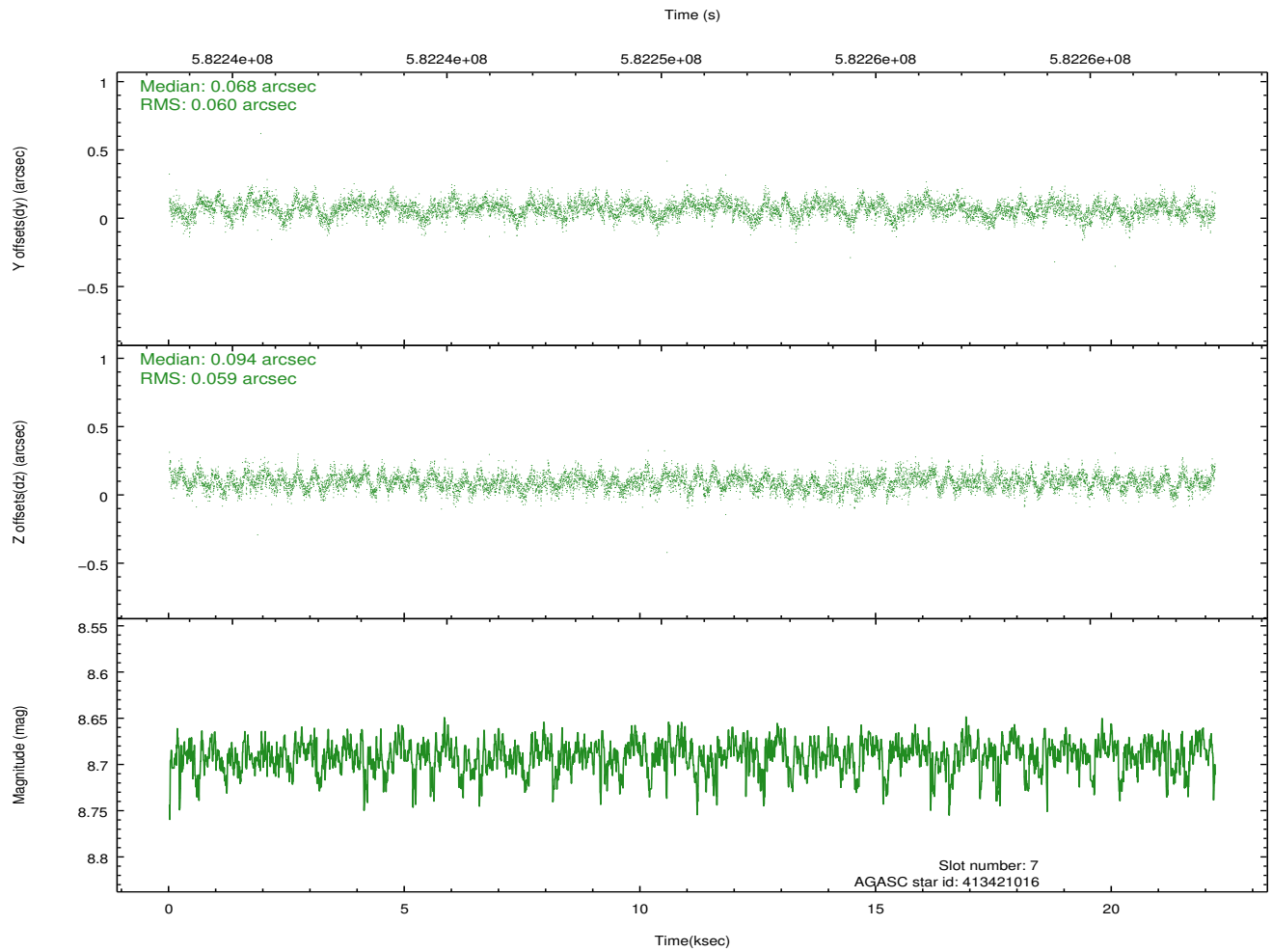
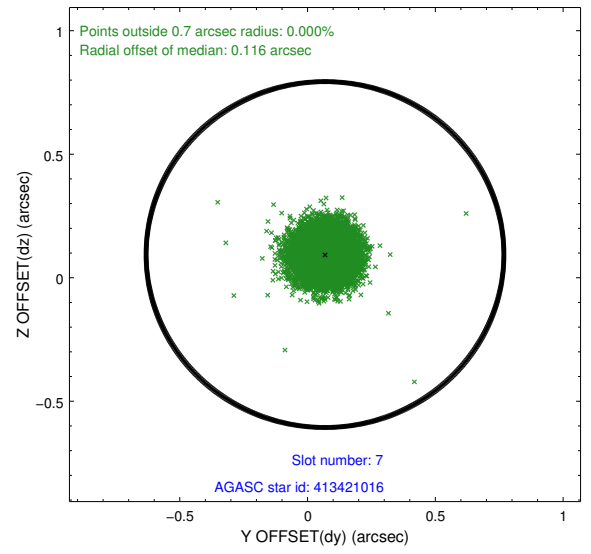
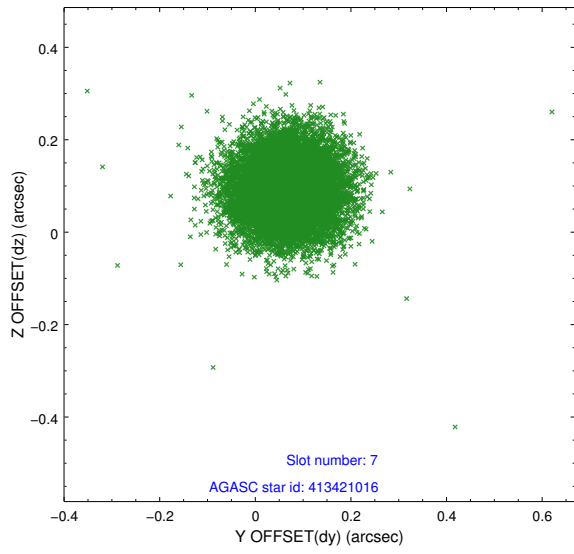
1.3.3 Slot 5



1.3.4 Slot 6

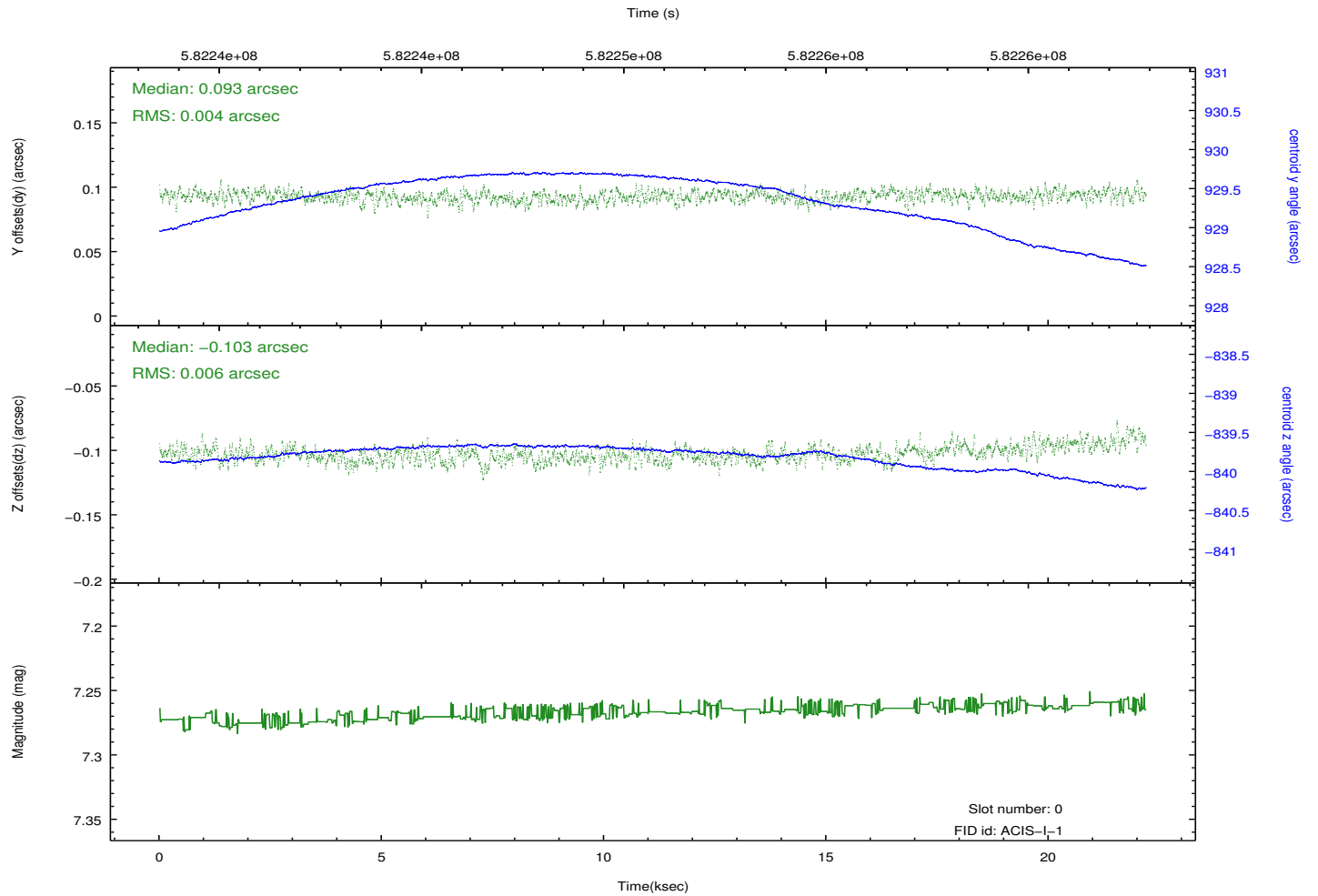
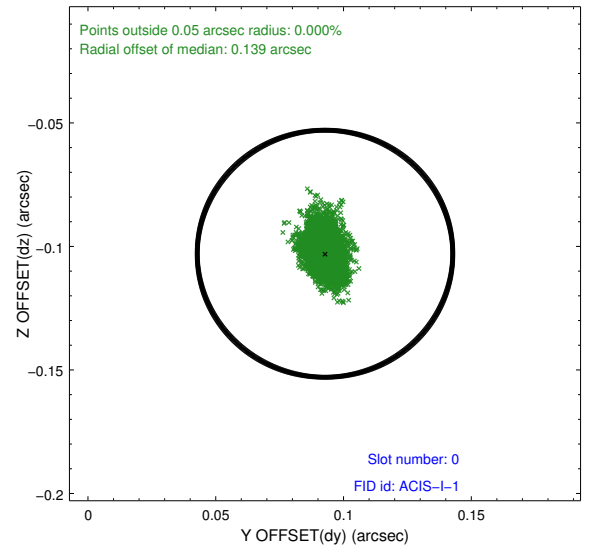
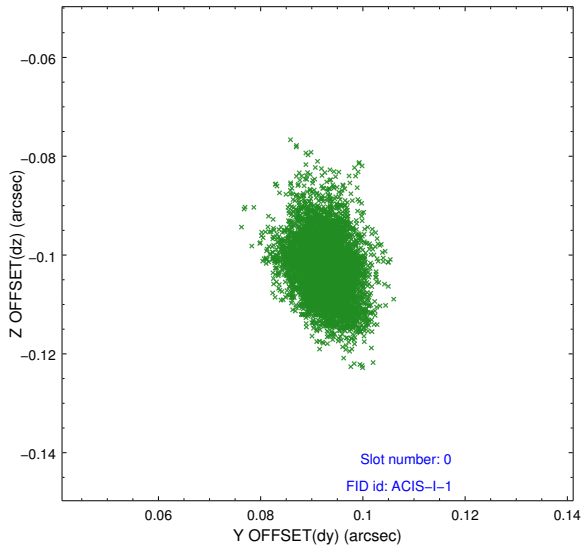


1.3.5 Slot 7

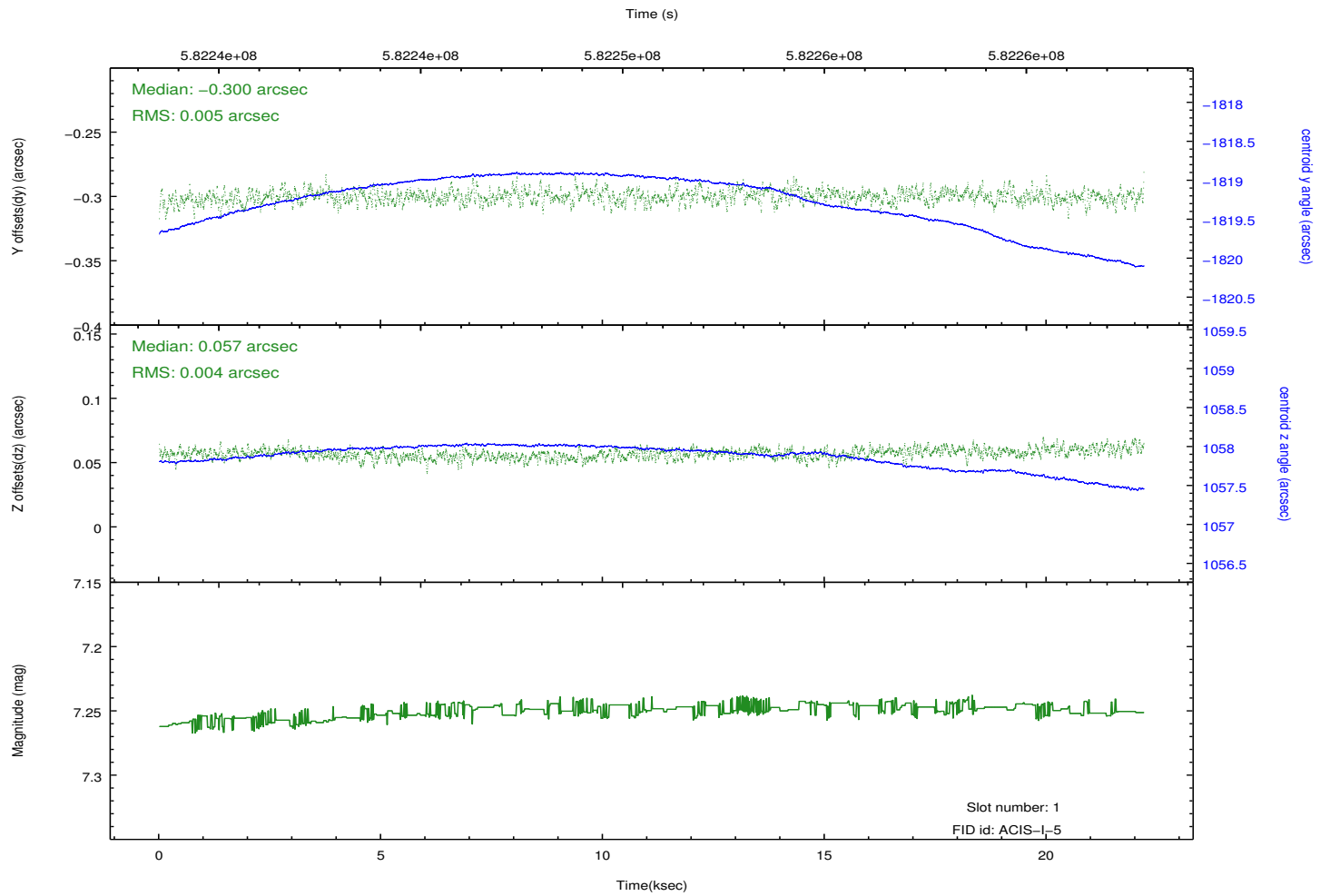
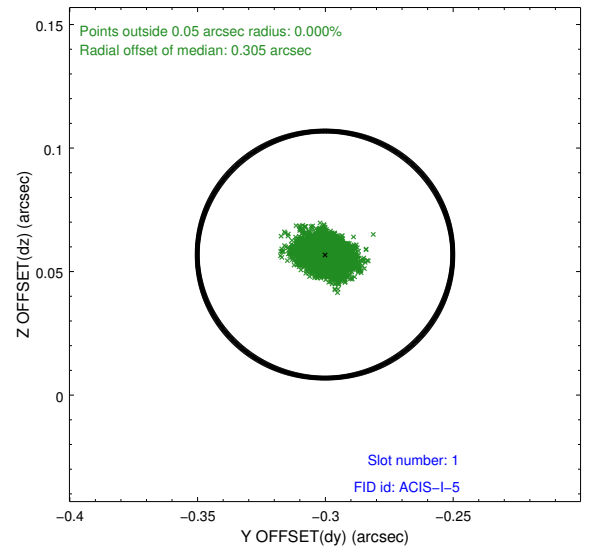
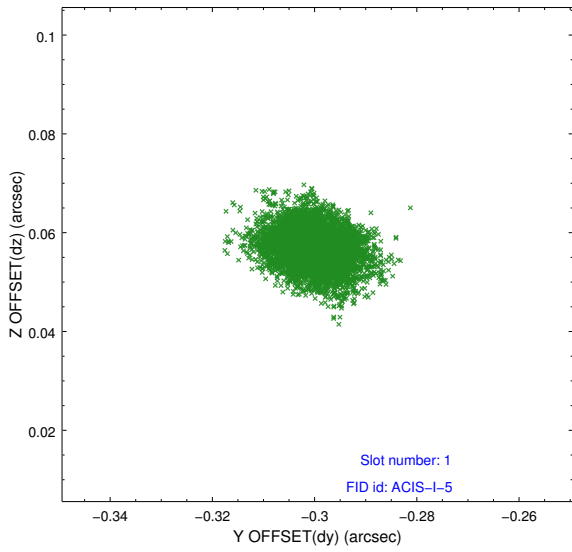


1.4 FID Slots

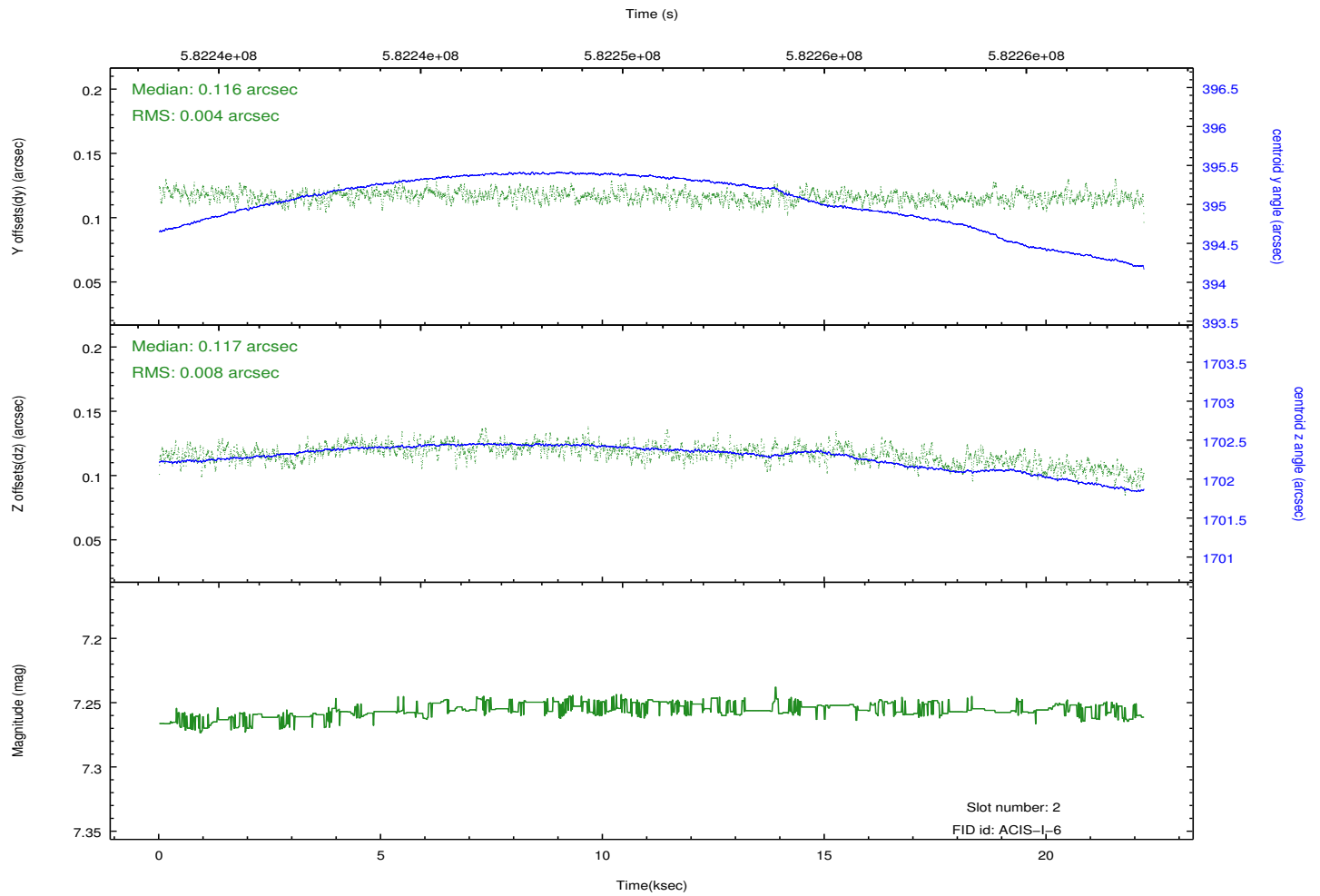
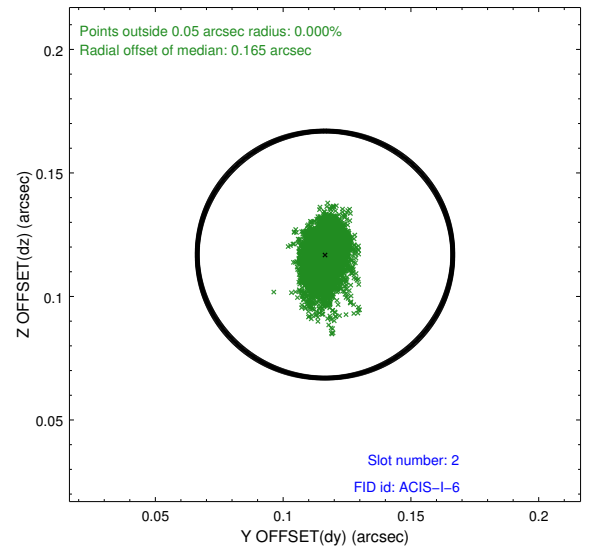
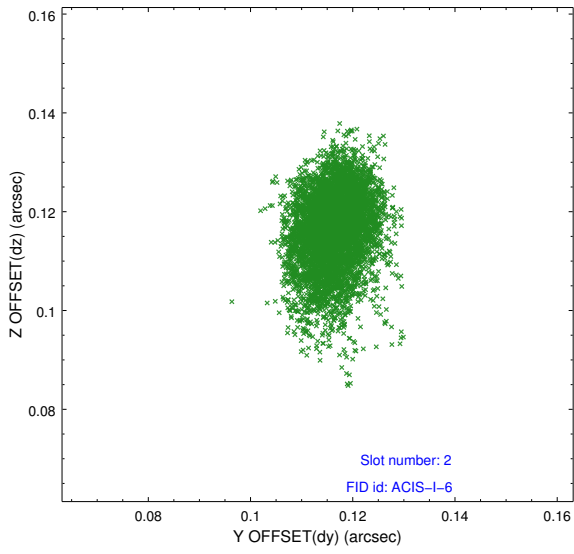
1.4.1 Slot 0



1.4.2 Slot 1



1.4.3 Slot 2



A Summary

A.1 Status

V&V Scientist	Joy Nichols
V&V Date (YYYY-MM-DD)	2016.06.15
V&V Edition	1
V&V Disposition and Status	Repr+DD
V&V Charge Time	22.068859129667

A.2 Comments

The bias map for CCD_ID = 0 suffers from anomalously high bias values in an 'exacto-knife'-shaped area of the bias file. Pixels in the event data that have been bias-corrected by one of the affected bias pixels may have an apparent energy shift. While the change in energy is expected to be small (~20 eV), it depends on many parameters that have not yet been fully explored for this bias anomaly. The bias map for CCD_ID = 0 will be recreated to remove this anomaly and the data will be reprocessed.