

V&V Reference Report

L2 ASCDS Version : 8.4.5

Observation 2201 - L2 Version 3
Chandra X-Ray Center

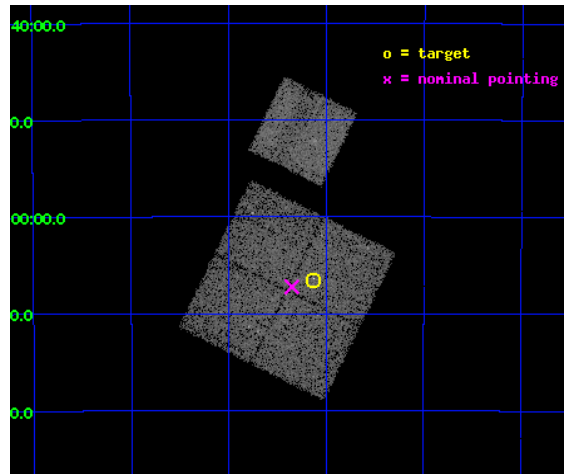
L2 Processing Date : Sep 2 2012

Contents

1	Front	2
2	OBI	3
2.1	OBI	3
2.1.1	Images	3
2.1.2	Bias	3
2.1.3	Parameters	4
2.1.4	Events	4
2.2	Compared Parameters	5
2.3	Aspect	6
2.4	Star Slots	9
2.4.1	Slot 3	9
2.4.2	Slot 4	10
2.4.3	Slot 5	11
2.4.4	Slot 6	12
2.4.5	Slot 7	13
2.5	FID Slots	14
2.5.1	Slot 0	14
2.5.2	Slot 1	15
2.5.3	Slot 2	16
A	Summary	17
A.1	Status	17
A.2	Comments	17

1 Front

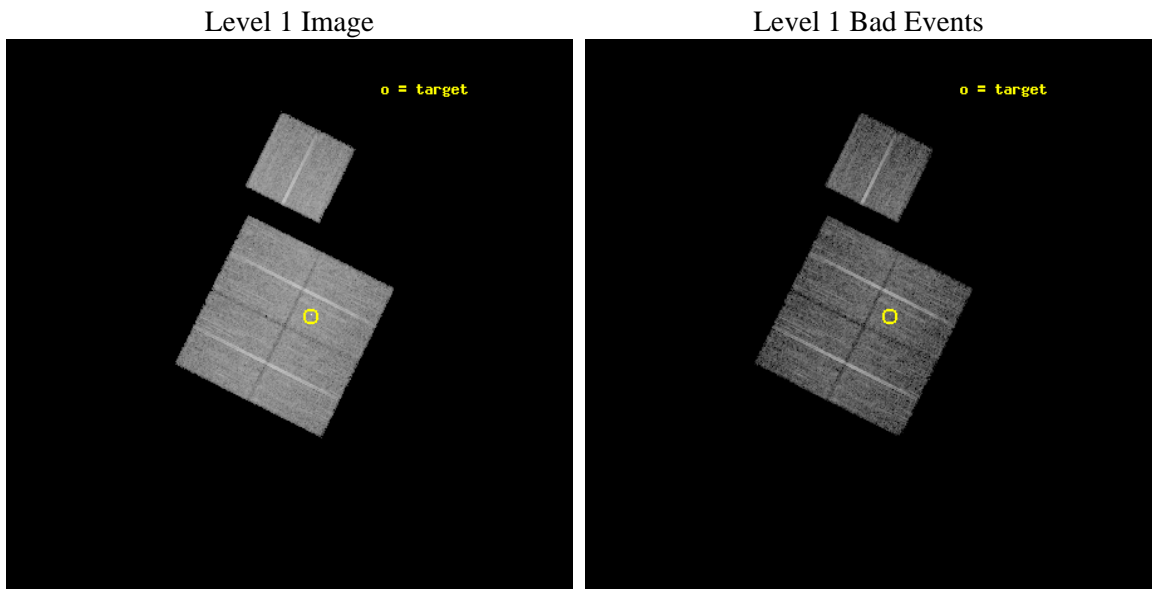
seq_num	800140	Sequence number
obs_id	2201	Observation id
title	NEWLY DISCOVERED MASSIVE, MODERATE REDSHIFT X-RAY CLUSTERS OF GALAXIES	Proposal title
observer	Prof. Sabine Schindler	Principal investigator
object	RBS380	Source name
dtcycle	0	
cycle	P	events from which exps? Prim/Second/Both
ra_targ	45.281667	Observer's specified target RA [deg]
dec_targ	-47.109722	Observer's specified target Dec [deg]
ra_nom	45.337970596368	Nominal RA [deg]
dec_nom	-47.120789497288	Nominal Dec [deg]
roll_nom	26.454406446004	Nominal Roll [deg]
revision	3	Processing version of data
ontime	10461.760738373	Sum of GTIs [s]
livetime	10325.07013249	Livetime [s]
ontime0	10461.637618378	Sum of GTIs [s]
ontime1	10461.678658366	Sum of GTIs [s]
ontime2	10461.71969837	Sum of GTIs [s]
ontime3	10461.760738373	Sum of GTIs [s]
ontime6	10458.455717817	Sum of GTIs [s]
l2events	47474	Number of level 2 events



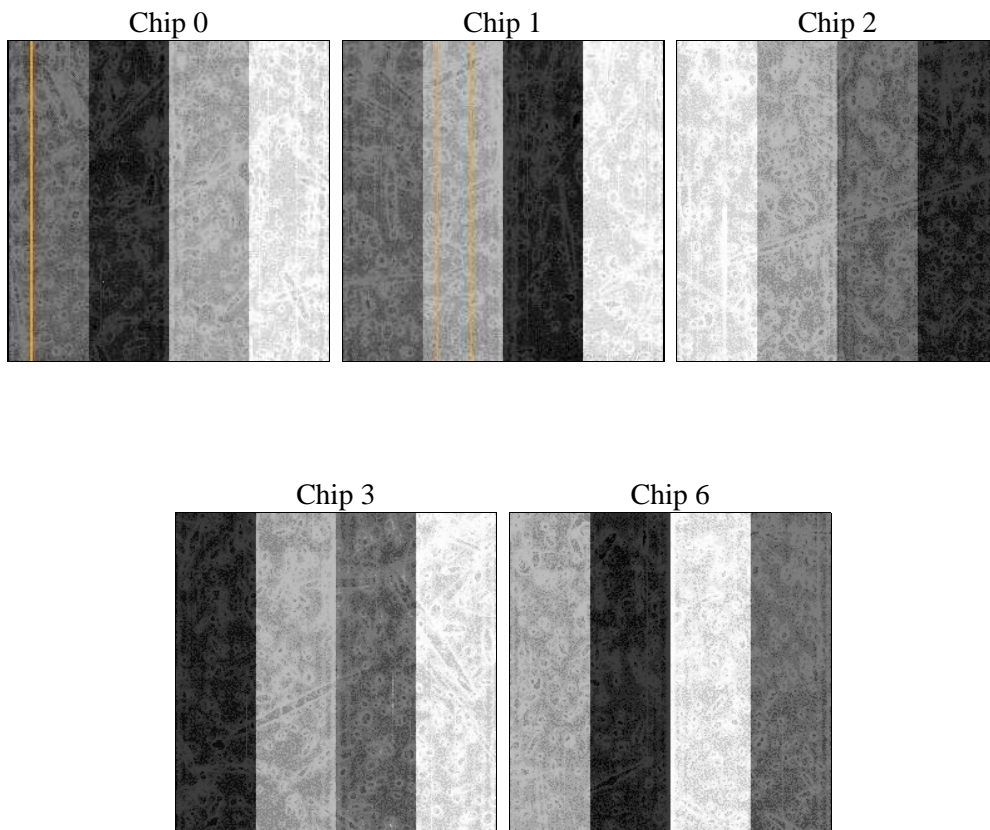
2 OBI

2.1 OBI

2.1.1 Images



2.1.2 Bias



2.1.3 Parameters

obi_num	0	Obi number	sched_exp_time	10352.626000	[s] Scheduled observation exposure time
ascdsver	8.4.5	Processing system revision	ontime	10461.760738373	Sum of GTIs [s]
caldsver	4.5.1.1	 	ontime0	10461.637618378	Sum of GTIs [s]
date	2012-09-02T09:47:54	Date and time of file creation	ontime1	10461.678658366	Sum of GTIs [s]
revision	3	Processing version of data	ontime2	10461.71969837	Sum of GTIs [s]
			ontime3	10461.760738373	Sum of GTIs [s]
			ontime6	10458.455717817	Sum of GTIs [s]
			l1events	356453	Number of level 1 events

2.1.4 Events

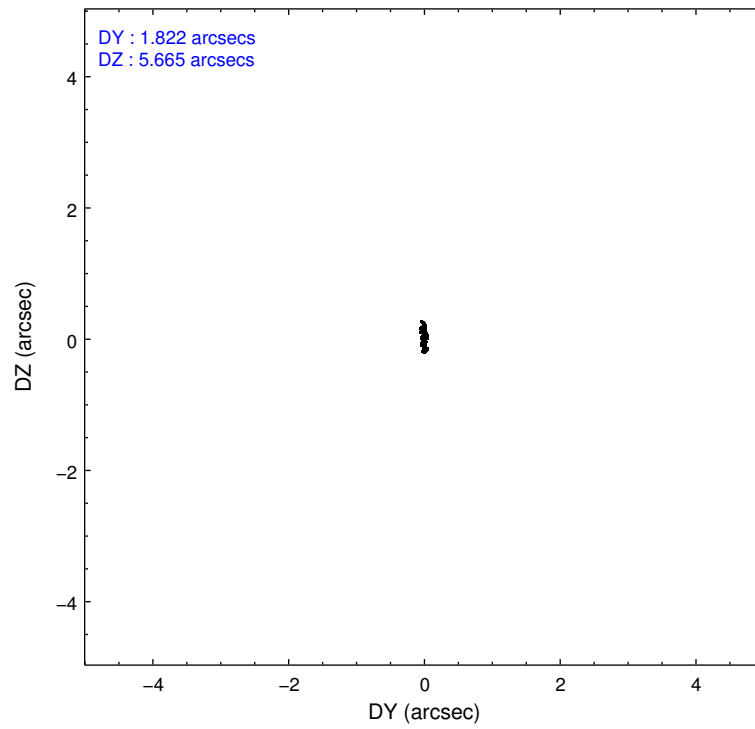
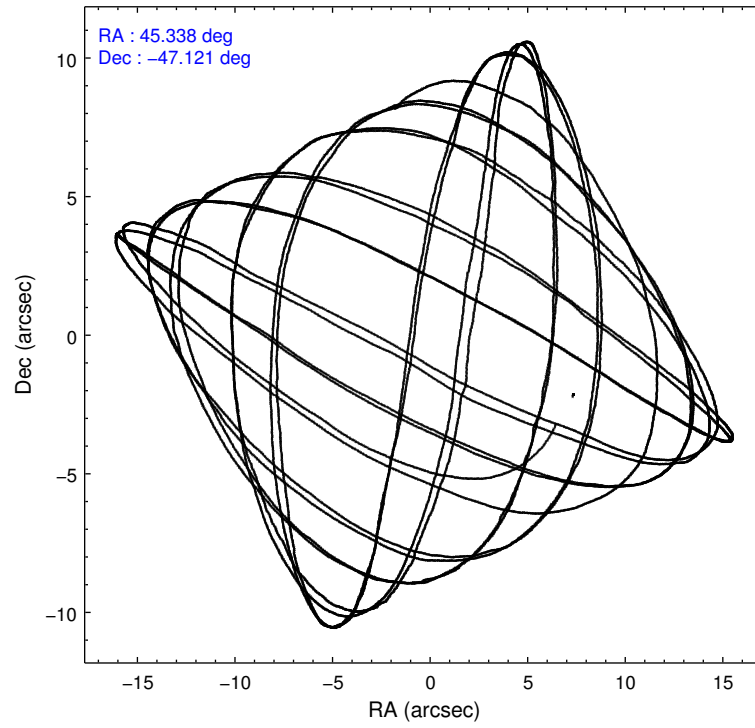
	ccd 0	ccd 1	ccd 2	ccd 3	ccd 6
level 1 events	66417	66250	73543	72902	77341
rejected events	56008	55759	63346	62088	64359
rejected %	84%	84%	86%	85%	83%

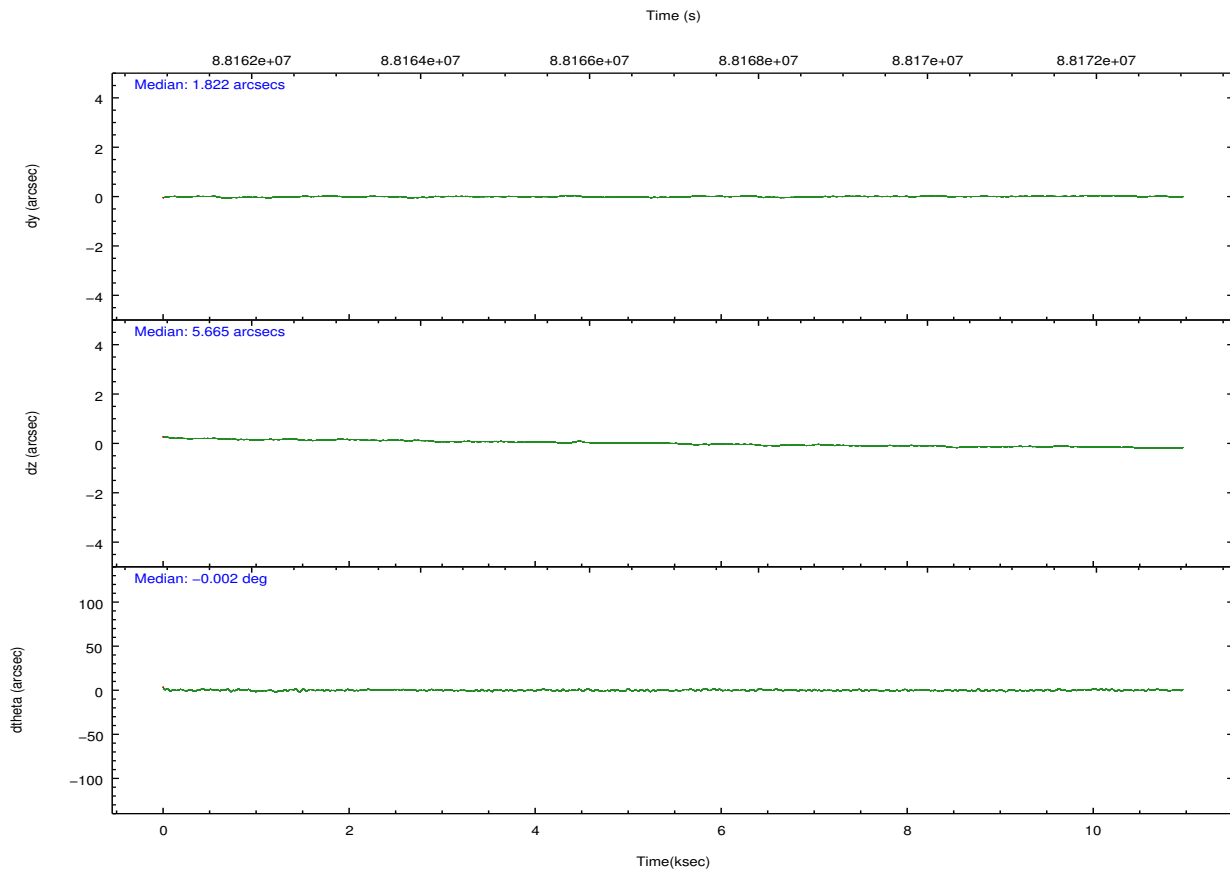
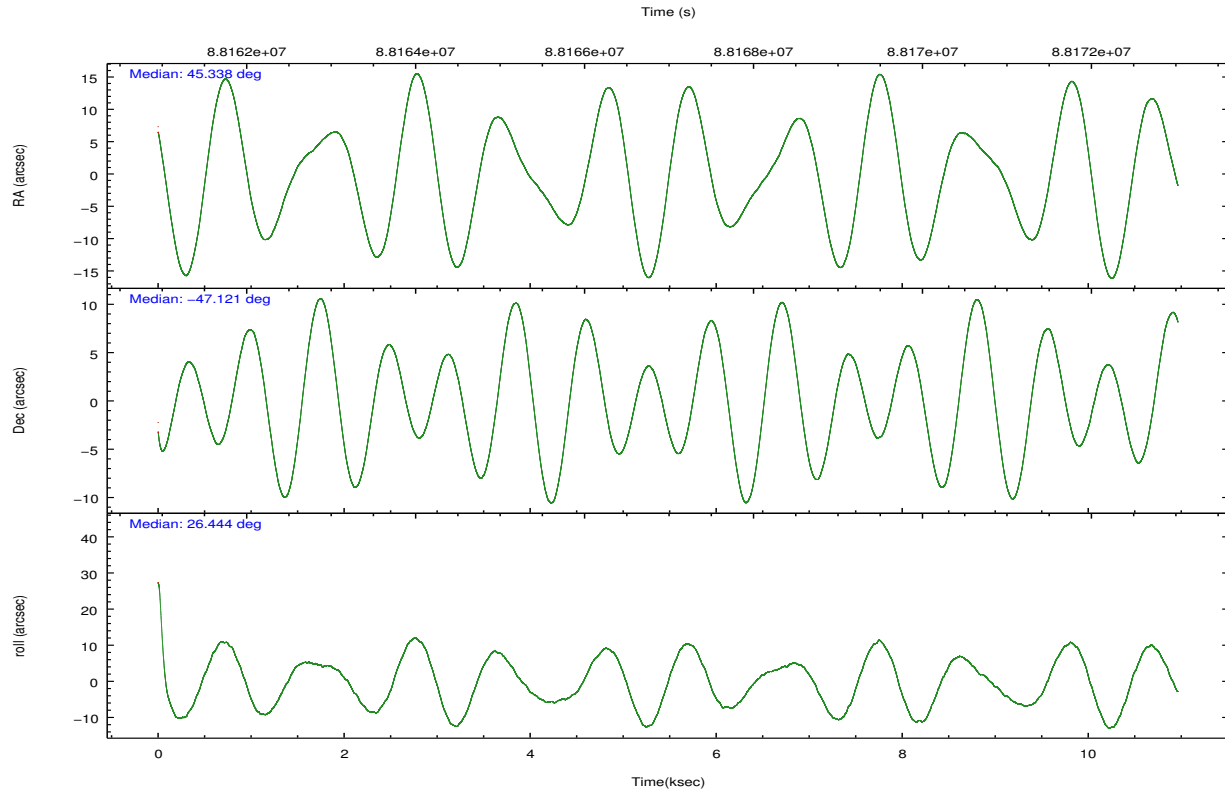
	ccd 0	ccd 1	ccd 2	ccd 3	ccd 6
grade 0 events	5316	5116	5232	5759	7519
	8%	7%	7%	7%	9%
grade 1 events	37	33	43	62	39
	0%	0%	0%	0%	0%
grade 2 events	2114	1987	2109	2000	2182
	3%	2%	2%	2%	2%
grade 3 events	816	879	717	775	850
	1%	1%	0%	1%	1%
grade 4 events	695	866	764	838	825
	1%	1%	1%	1%	1%
grade 5 events	2327	2456	2265	2558	2710
	3%	3%	3%	3%	3%
grade 6 events	1472	1645	1378	1445	1608
	2%	2%	1%	1%	2%
grade 7 events	53640	53268	61035	59465	61608
	80%	80%	82%	81%	79%

2.2 Compared Parameters

Parameter	Planned	Actual	Parameter	Planned	Actual
Instrument	ACIS	ACIS	Obspar format version number	7	7
Detector	ACIS-01236	ACIS-01236	Obspar file type	PREDICTED	ACTUAL
Grating	NONE	NONE	Obspar update status	NONE	UPDATED
Data mode	VFAINT	VFAINT	Number of optional ACIS chips dropped	0	0
Observation mode	POINTING	POINTING	On-chip summing requested	N	N
[deg] Pointing RA	45.315544	45.33797059636839	Subarray requested	NONE	NONE
[deg] Pointing Dec	-47.143696	-47.12078949728805	Alternating exposures requested	N	N
[deg] Pointing Roll	26.229247	26.45440644600392	[s] Primary exposure time	0.000000	3.1
[mm] SIM focus pos	-0.782348	-0.7809083437167272			
[mm] SIM defocus	0	0.001439871863259334			
[mm] SIM translation stage pos	-233.592463	-233.5874344608287			
[mm] SIM translation stage offset	0	-0.005018542100998502			
[s] Observation start time (MET)	88162115.184000	88160950.540004			
Observation start date	2000-10-17T09:27:31	2000-10-17T09:09:10			
[s] Observation end time (MET)	88172467.184000	88172782.627951			
Observation end date	2000-10-17T12:20:03	2000-10-17T12:26:22			
Read mode	TIMED	TIMED			

2.3 Aspect



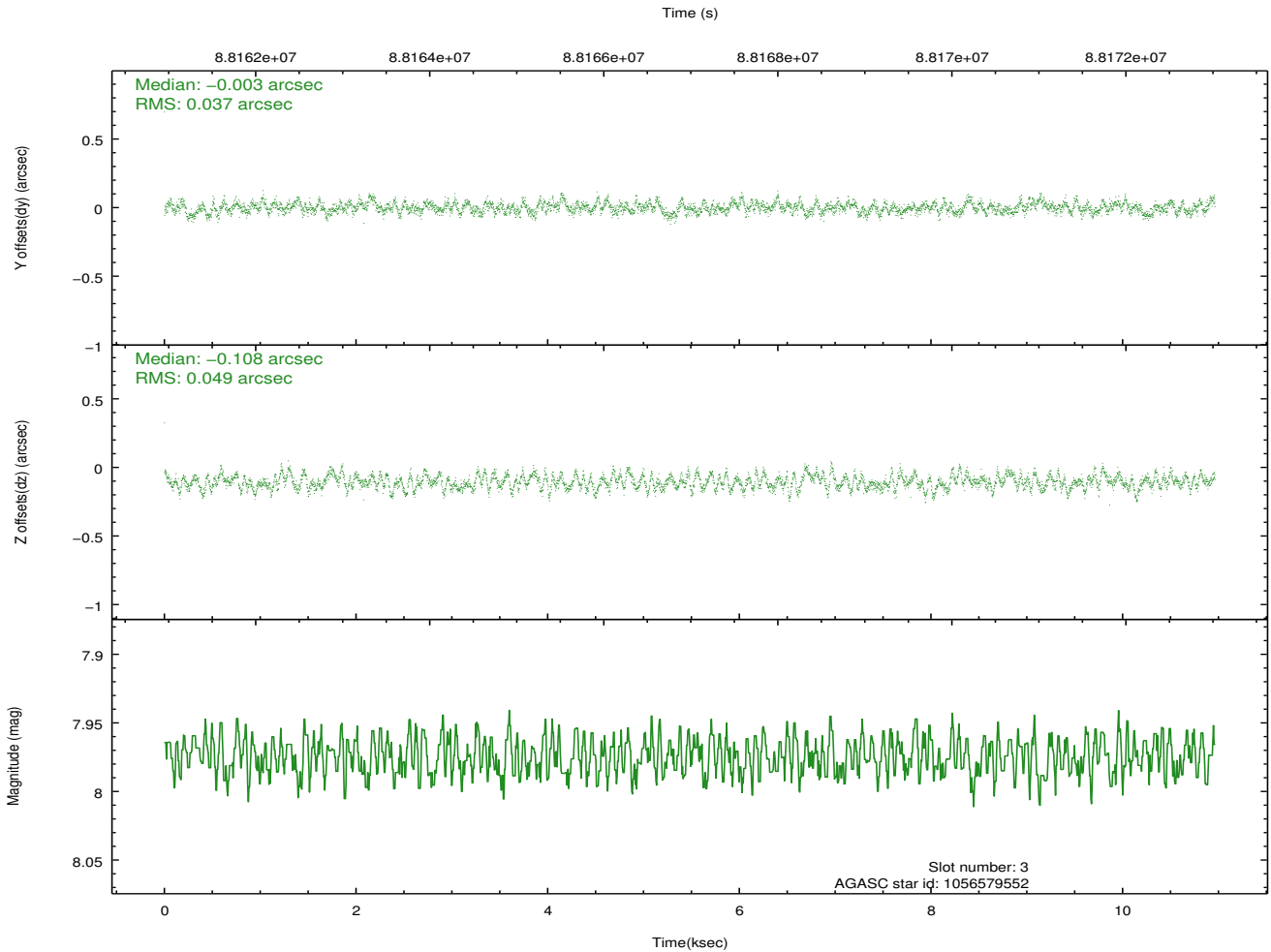
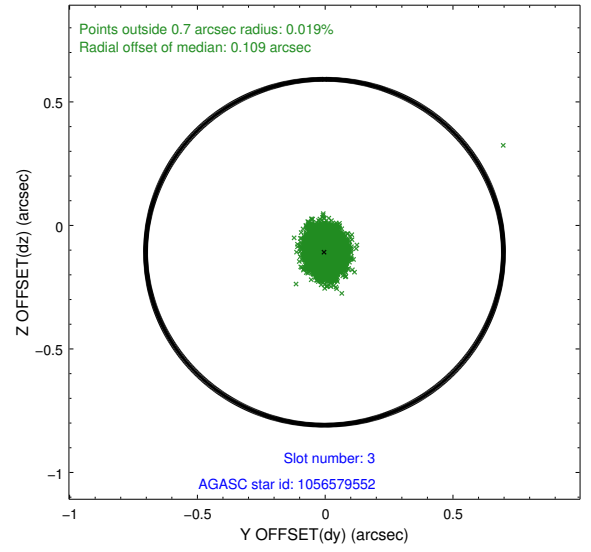
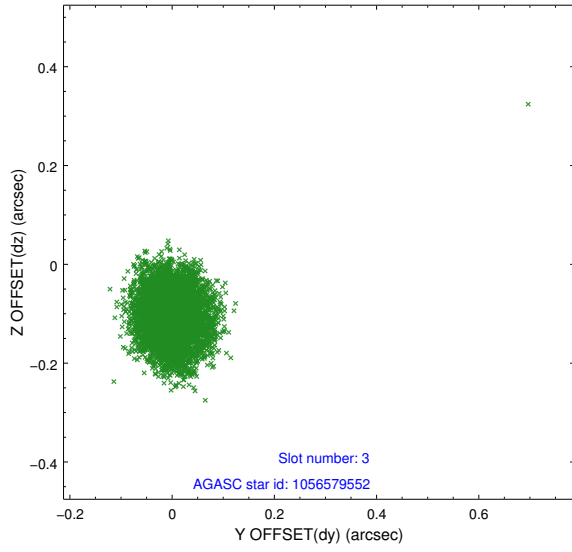


Slot Statistics

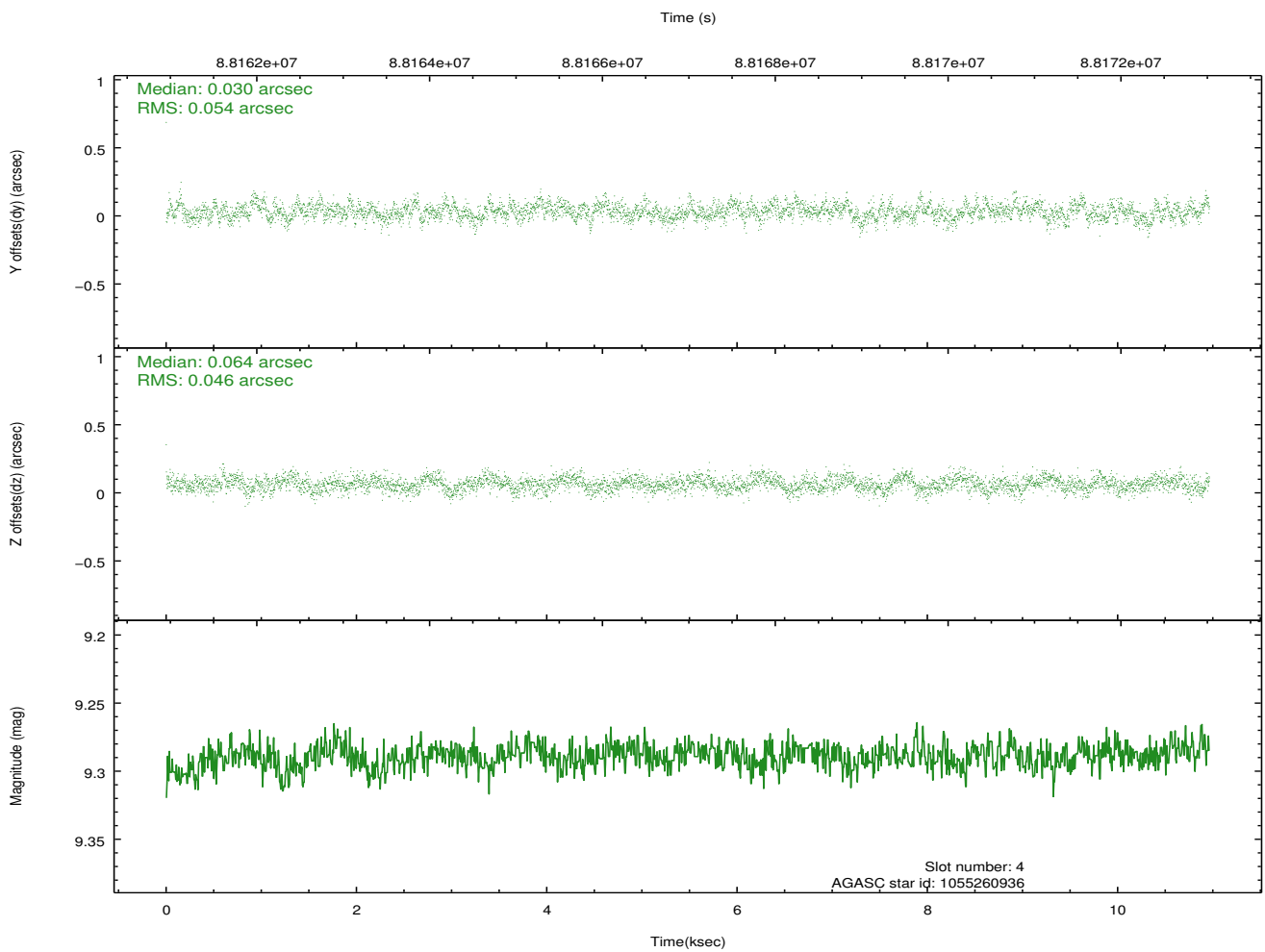
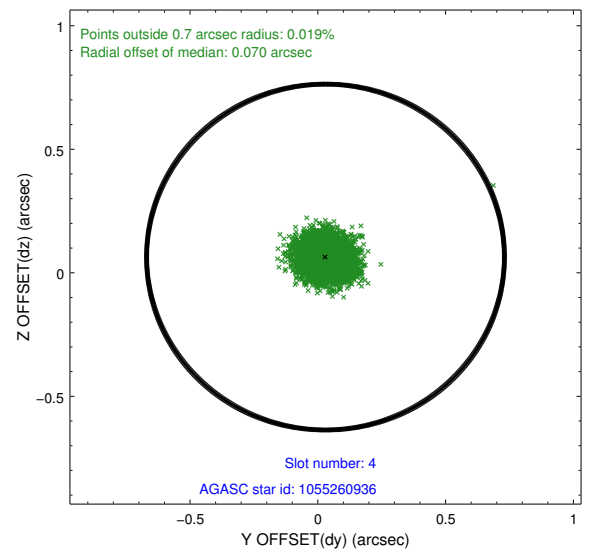
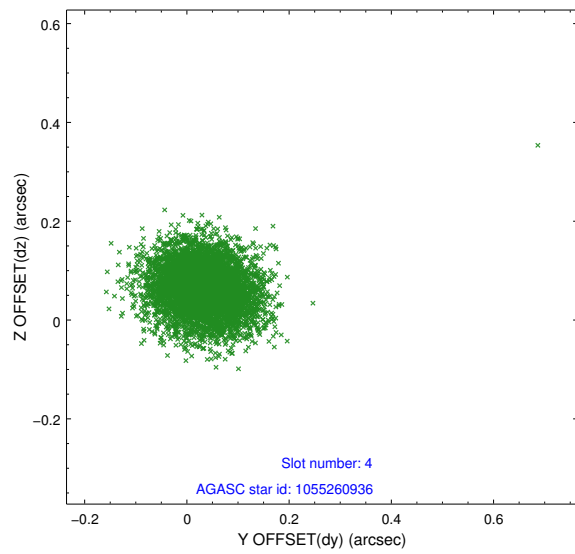
slot	status	id	mag	n_pts	med_dy	med_dz	dr1	dr2	ra	dec	mean_y	mean_z
0	FID	ACIS-I-2	7.15	2675	-0.037	-0.051	0.009	0.017	0.000000	0.000000	-756.20	-835.44
1	FID	ACIS-I-4	7.18	2675	-0.029	0.043	0.006	0.011	0.000000	0.000000	2157.65	1070.60
2	FID	ACIS-I-5	7.23	2675	-0.035	0.078	0.009	0.016	0.000000	0.000000	-1809.42	1069.01
3	GUIDE	1056579552	7.97	5347	-0.003	-0.108	0.064	0.103	45.470739	-47.559050	-321.55	-1508.58
4	GUIDE	1055260936	9.29	5347	0.030	0.064	0.075	0.121	44.632539	-47.399508	-1902.16	-97.79
5	GUIDE	1056571984	9.74	5347	-0.060	0.116	0.112	0.180	45.824307	-47.677451	256.26	-2272.31
6	GUIDE	1055262440	9.95	5344	-0.007	-0.060	0.121	0.199	44.184865	-46.874290	-2075.59	2080.78
7	GUIDE	1056180312	10.09	5346	0.041	-0.016	0.117	0.192	46.175629	-47.461714	1367.82	-1962.04

2.4 Star Slots

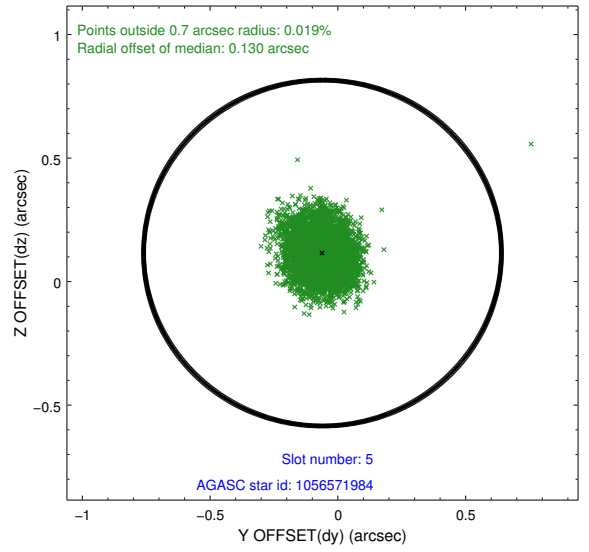
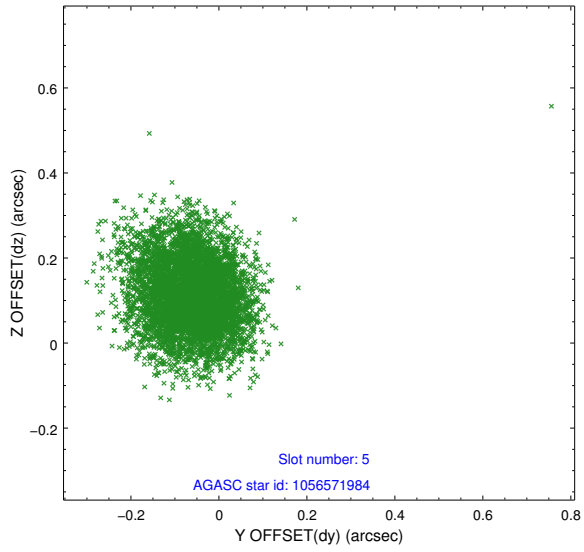
2.4.1 Slot 3



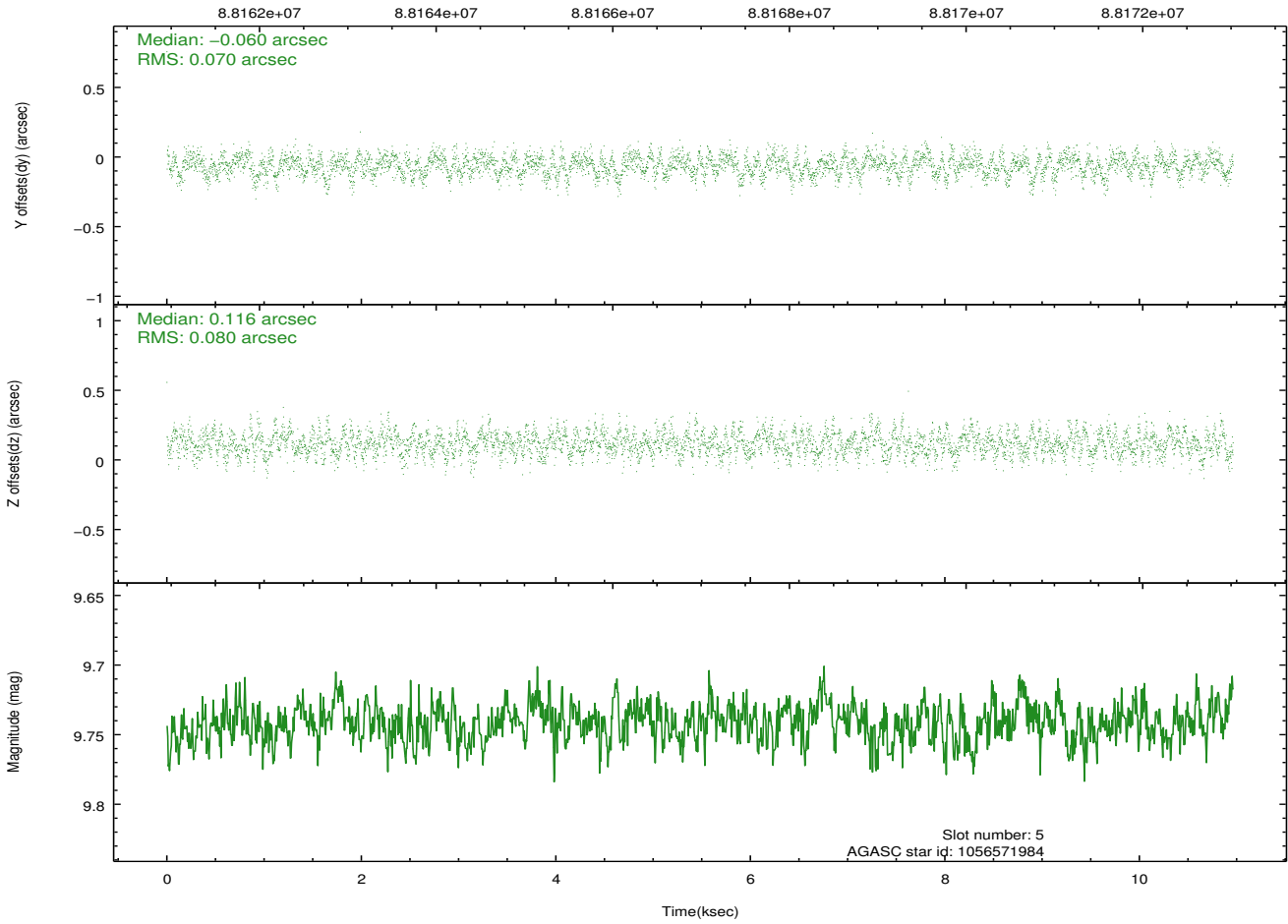
2.4.2 Slot 4



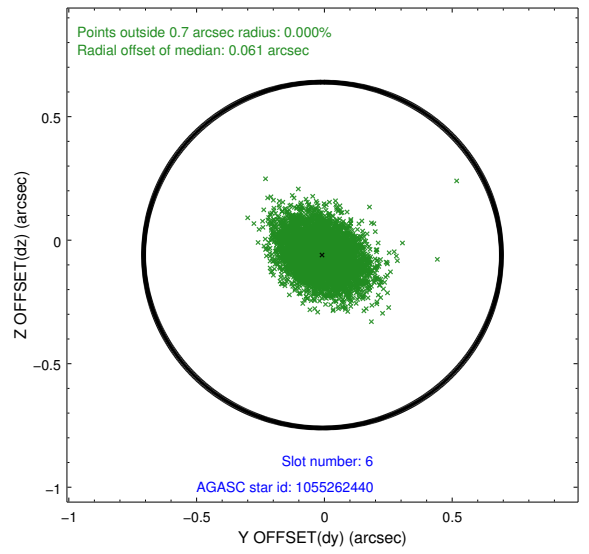
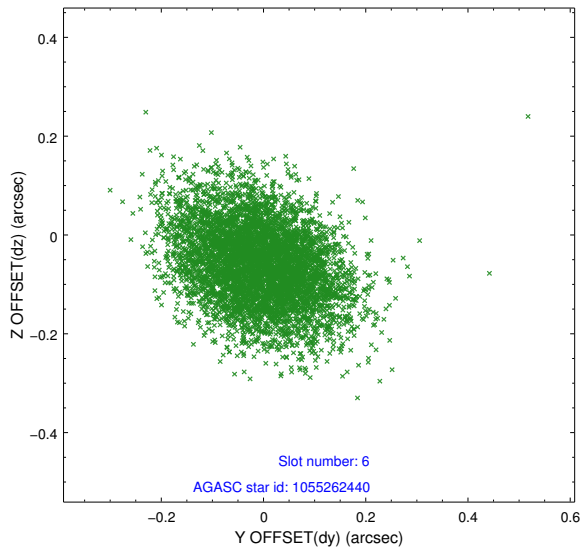
2.4.3 Slot 5



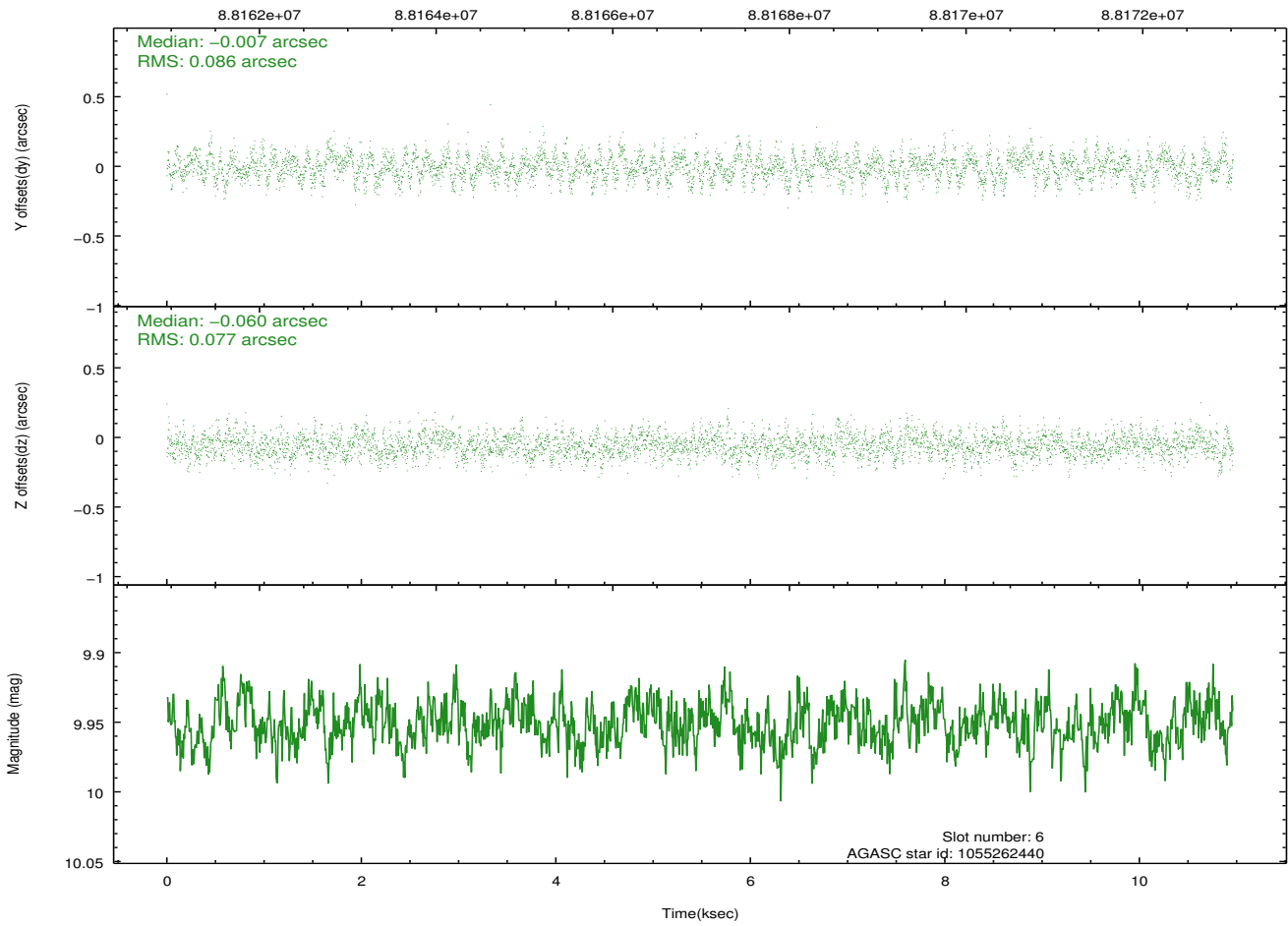
Time (s)



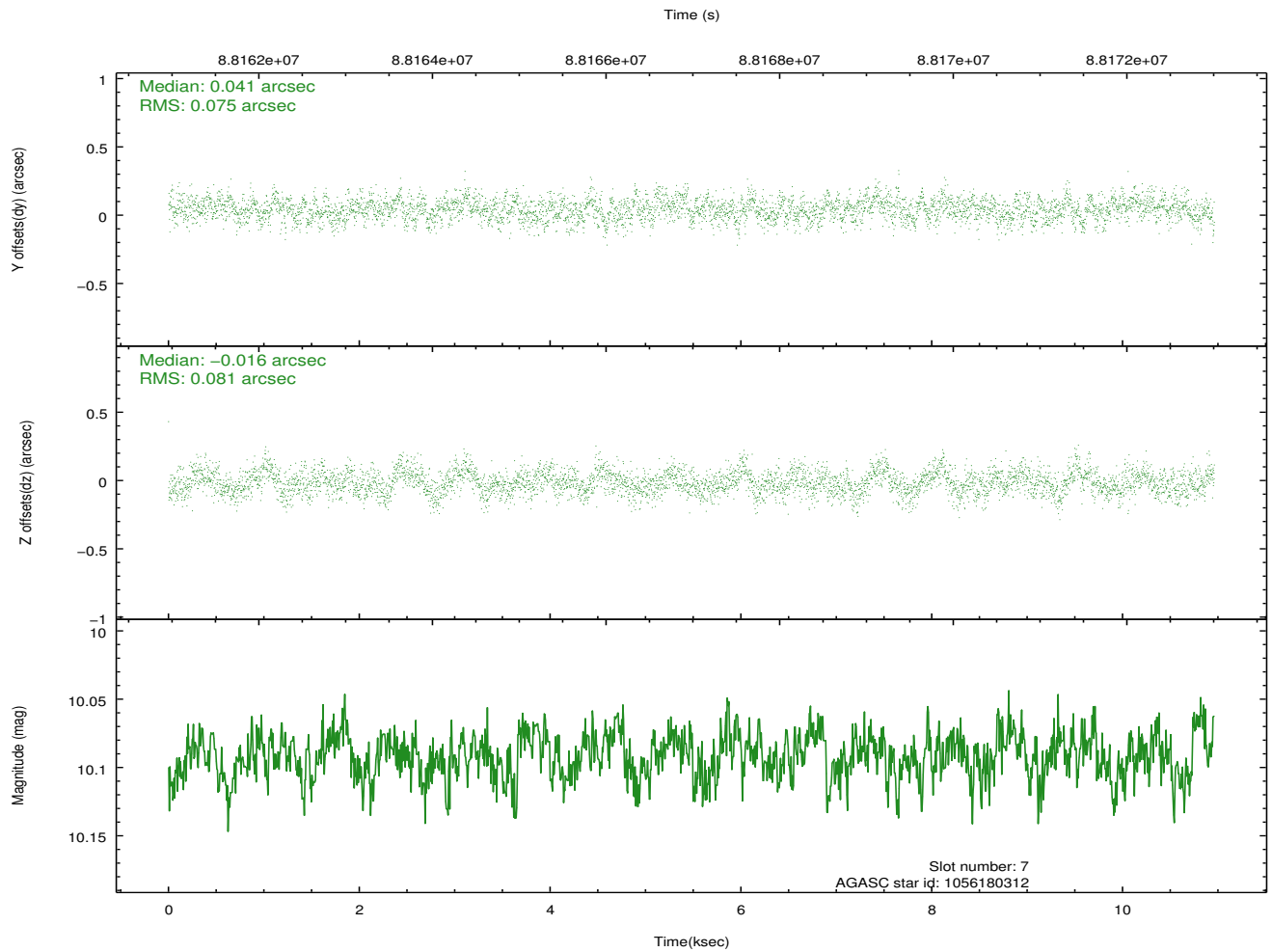
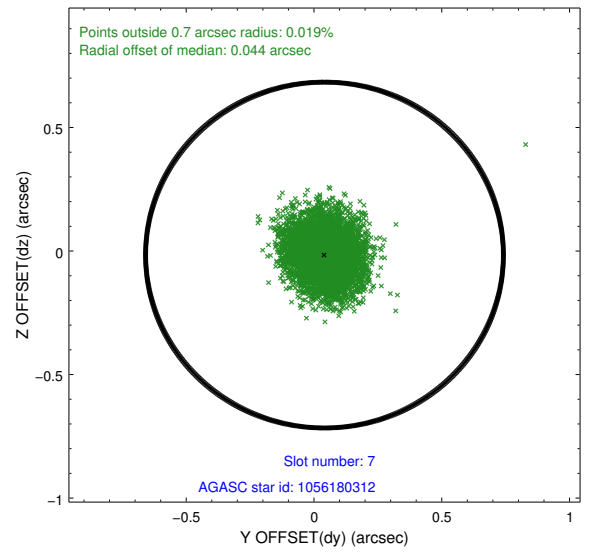
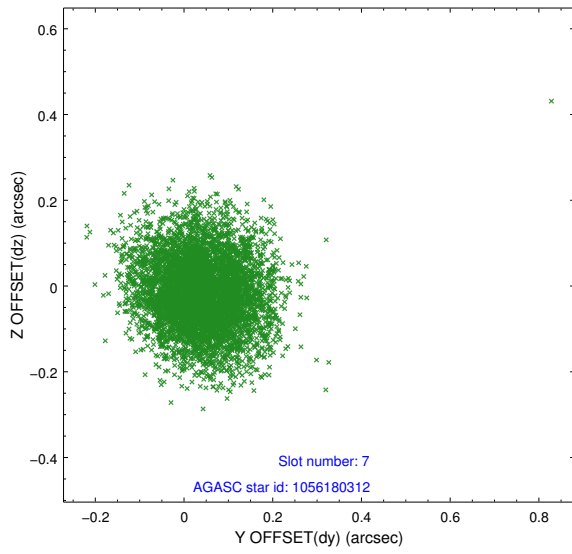
2.4.4 Slot 6



Time (s)

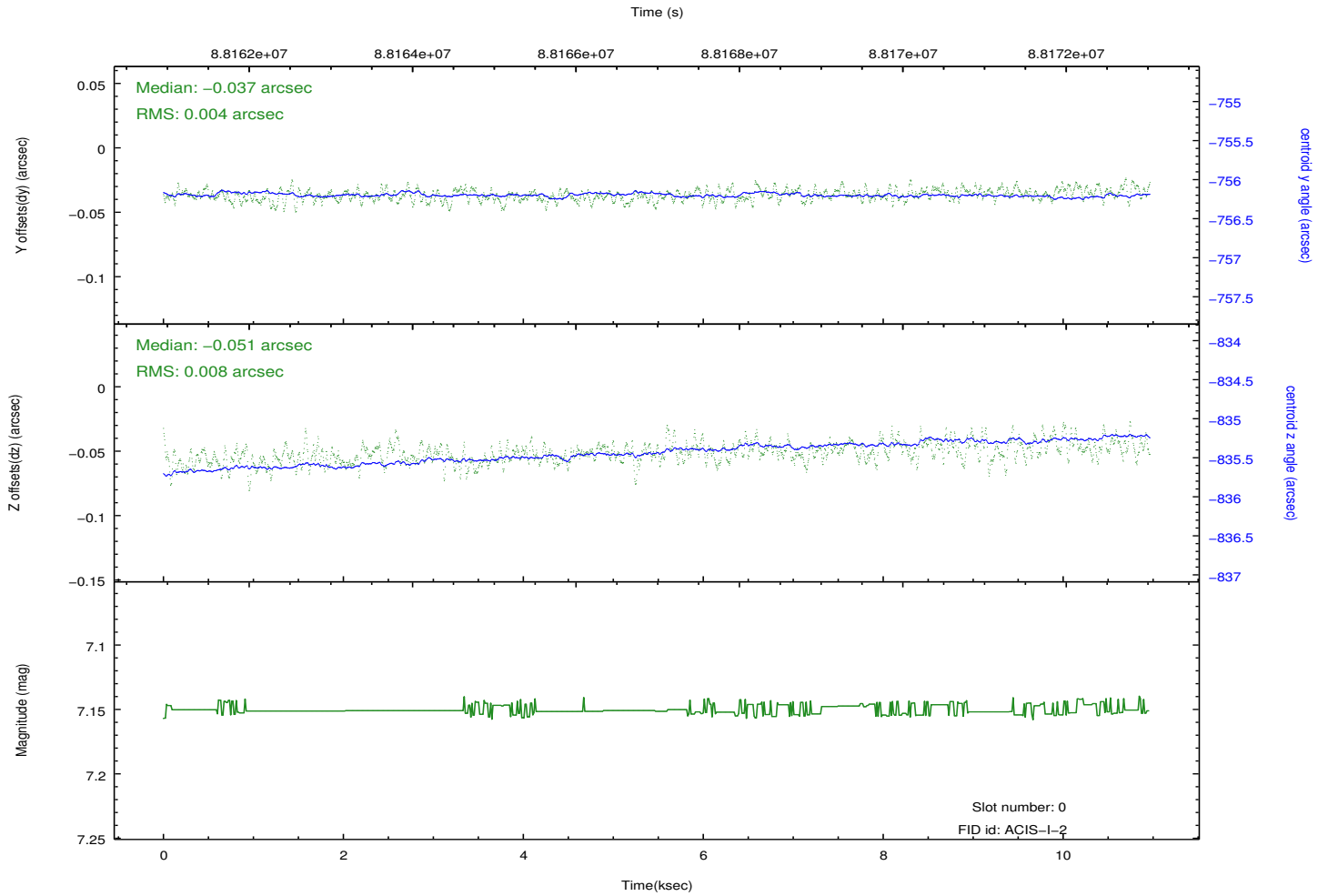
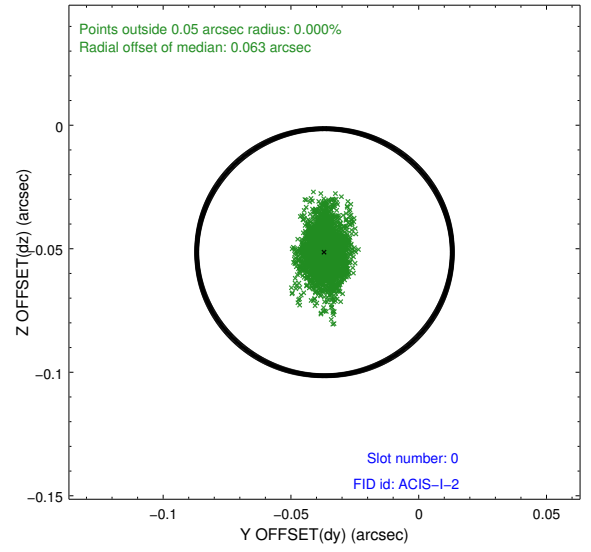
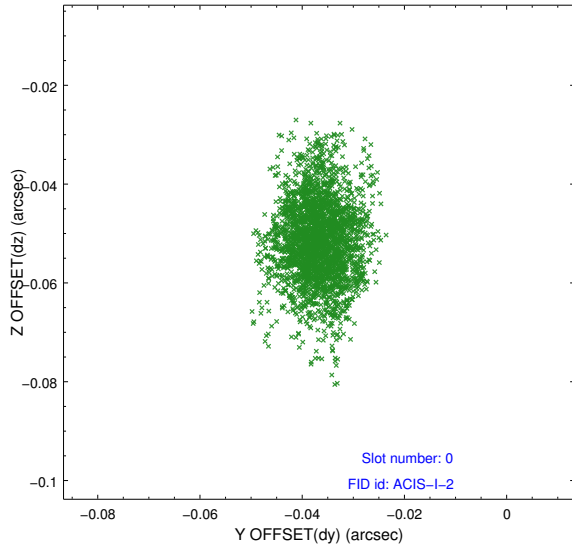


2.4.5 Slot 7

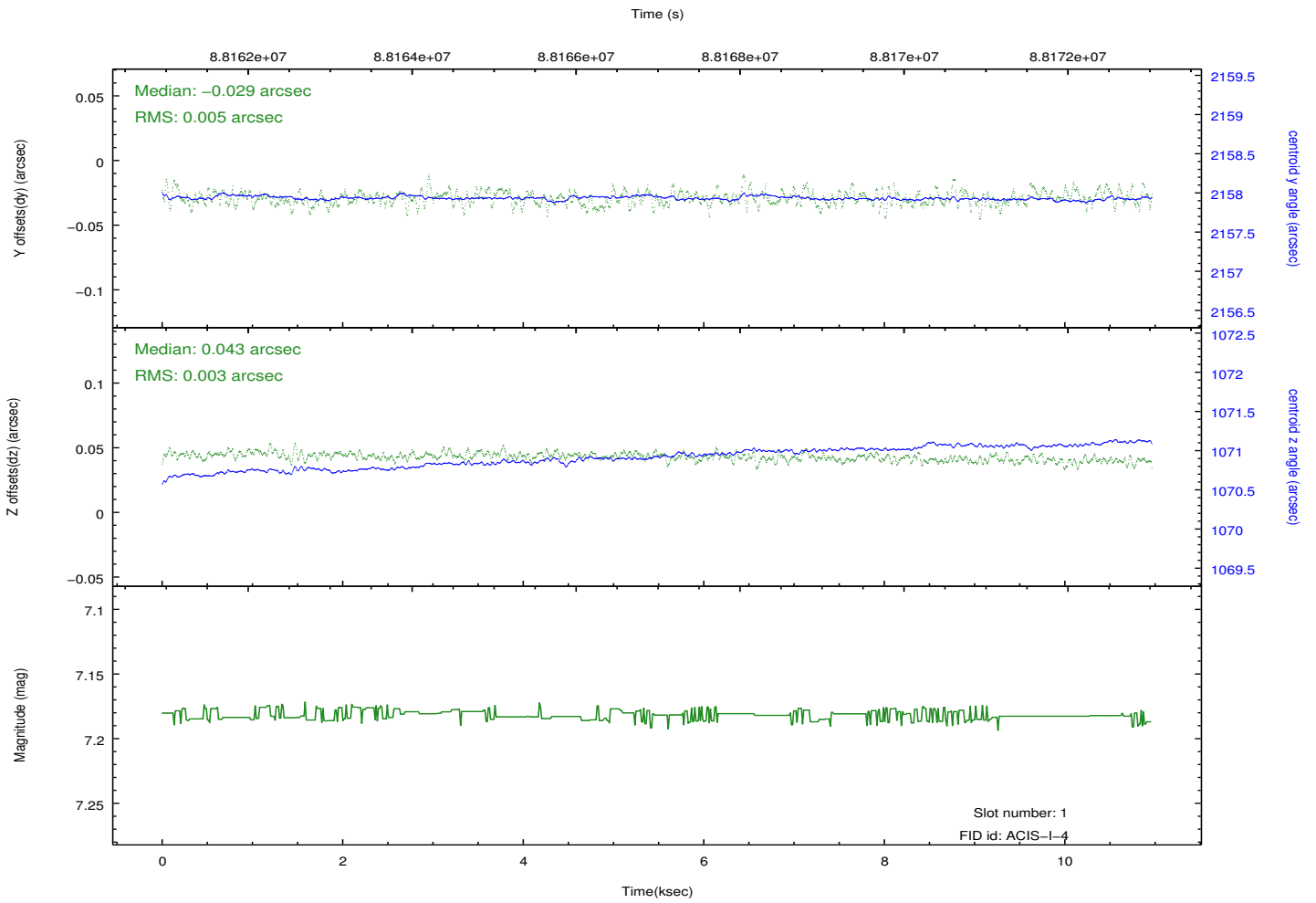
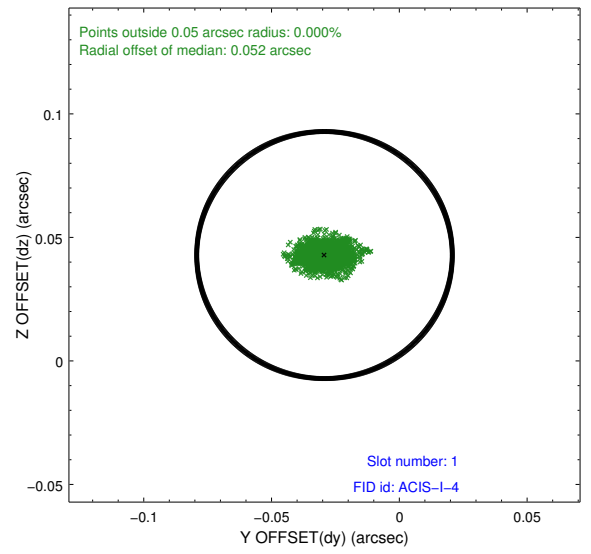
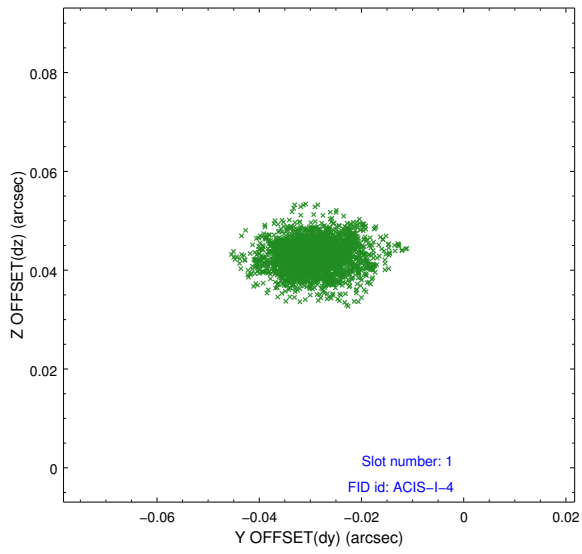


2.5 FID Slots

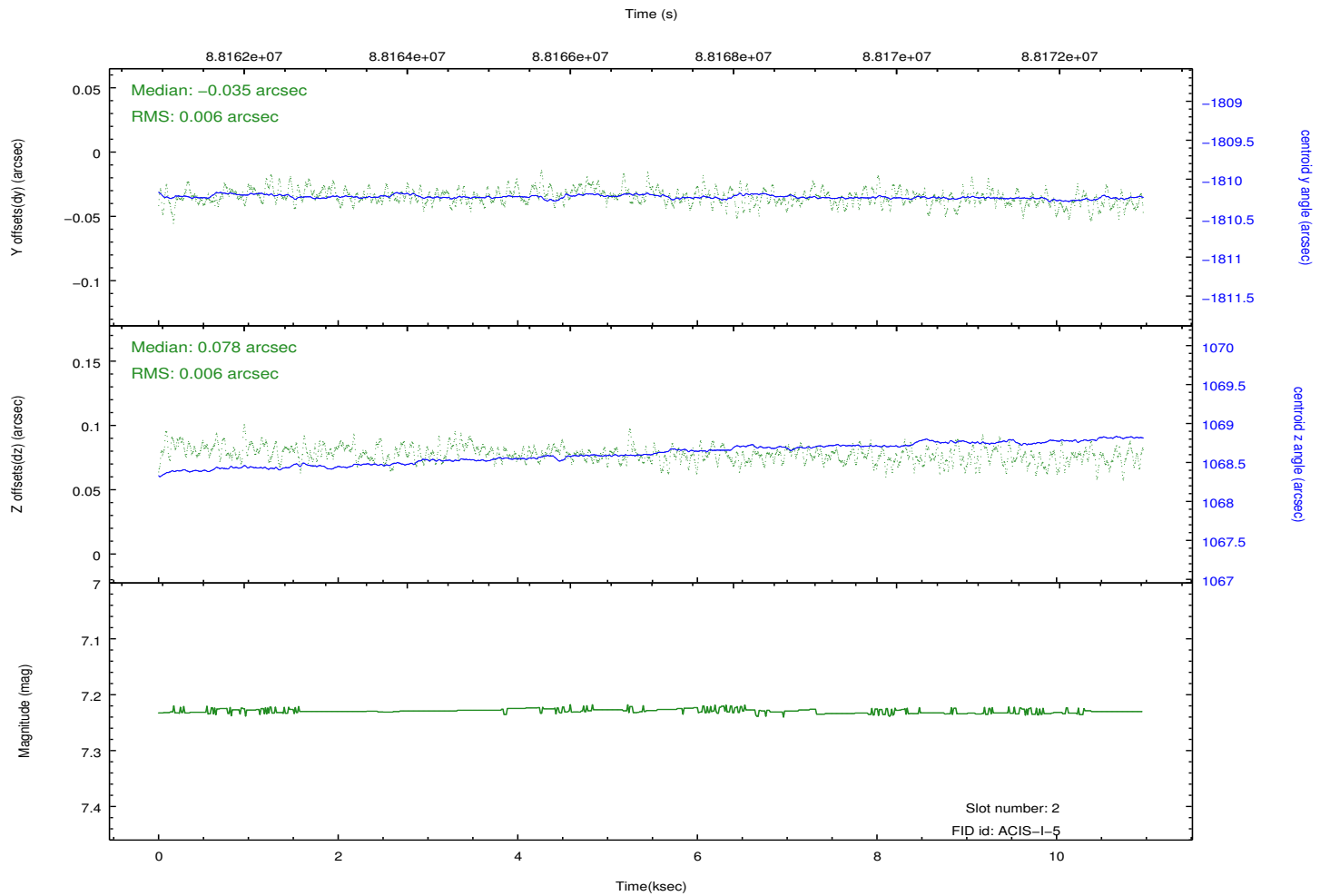
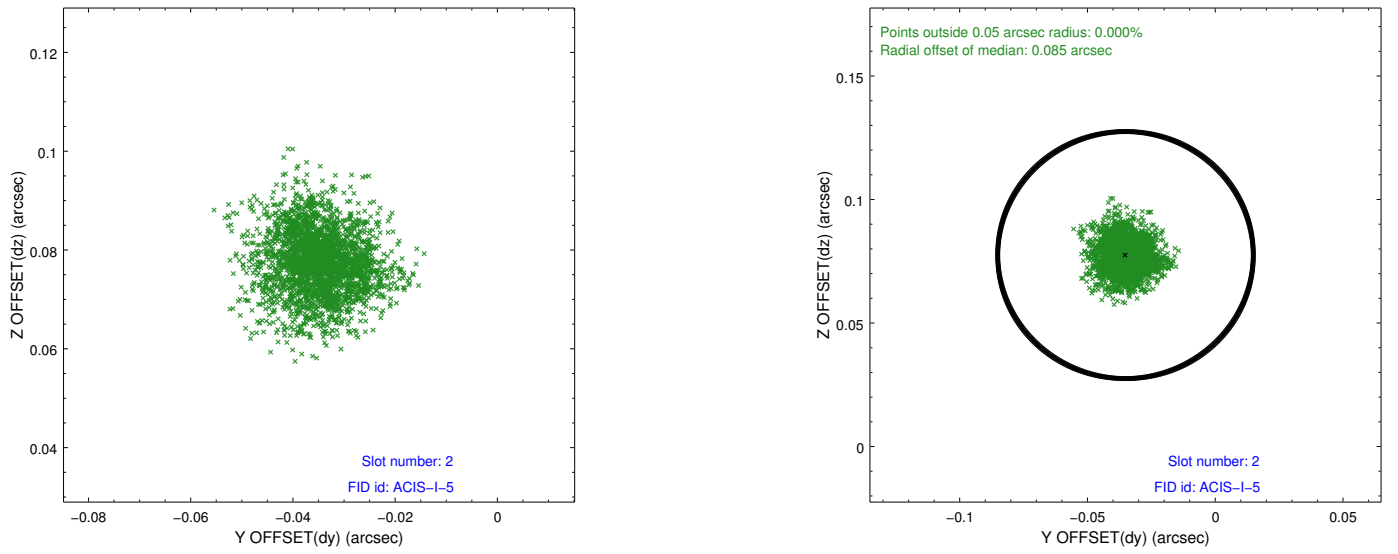
2.5.1 Slot 0



2.5.2 Slot 1



2.5.3 Slot 2



A Summary

A.1 Status

V&V Scientist	Jen Lauer
V&V Date (YYYY-MM-DD)	2012.09.10
V&V Edition	1
V&V Disposition and Status	OK
V&V Charge Time	10.462

A.2 Comments