

V&V Reference Report

L2 ASCDS Version : 8.4.5

Observation 2221 - L2 Version 3
Chandra X-Ray Center

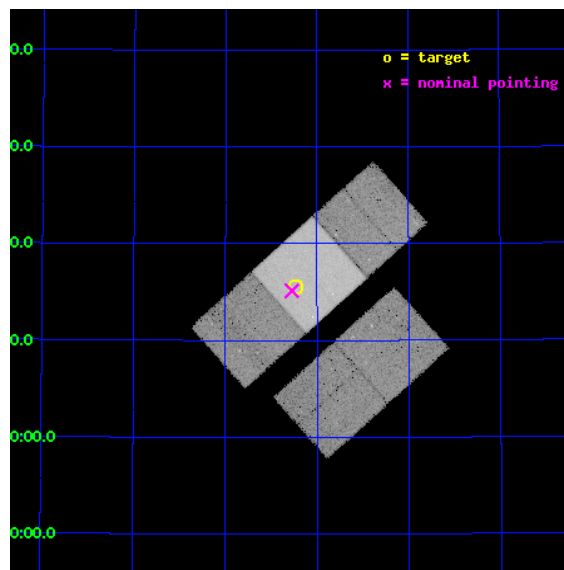
L2 Processing Date : Sep 26 2012

Contents

1	Front	2
2	OBI	3
2.1	OBI	3
2.1.1	Images	3
2.1.2	Bias	3
2.1.3	Parameters	4
2.1.4	Events	4
2.2	Compared Parameters	5
2.3	Aspect	6
2.4	Star Slots	9
2.4.1	Slot 3	9
2.4.2	Slot 4	10
2.4.3	Slot 5	11
2.4.4	Slot 6	12
2.4.5	Slot 7	13
2.5	FID Slots	14
2.5.1	Slot 0	14
2.5.2	Slot 1	15
2.5.3	Slot 2	16
A	Summary	17
A.1	Status	17
A.2	Comments	17

1 Front

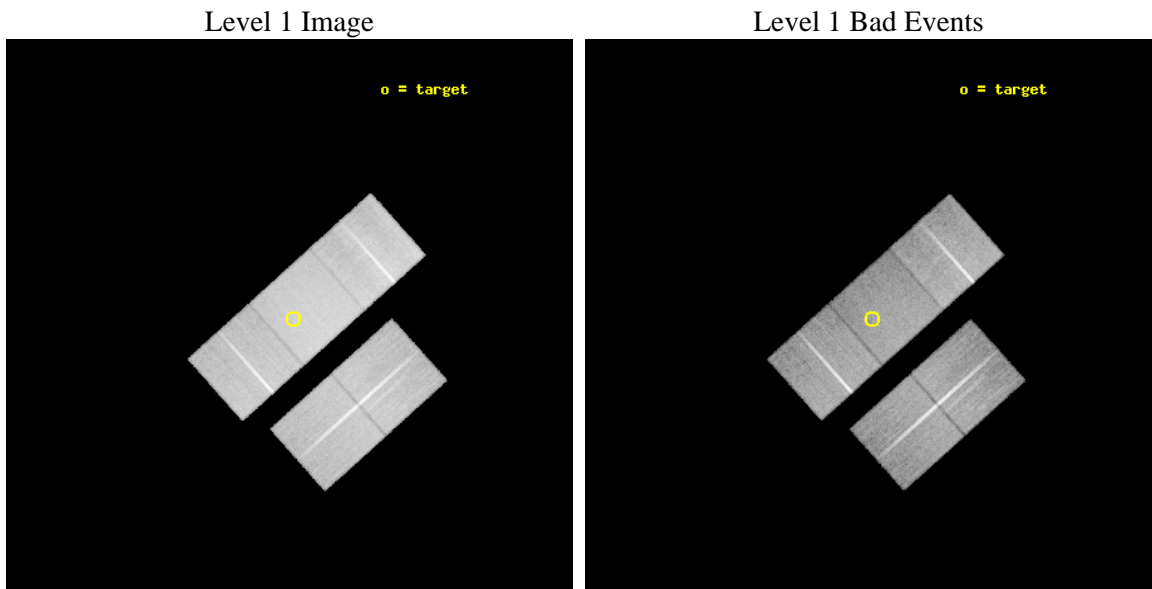
seq_num	800160	Sequence number
obs_id	2221	Observation id
title	GALAXY AND CLUSTER BUILDING AT Z = 2.4	Proposal title
observer	Dr. Raymond White	Principal investigator
object	53W002 CLUSTER	Source name
dtcycle	0	
cycle	P	events from which exps? Prim/Second/Both
ra_targ	258.559208	Observer's specified target RA [deg]
dec_targ	50.26	Observer's specified target Dec [deg]
ra_nom	258.56854378453	Nominal RA [deg]
dec_nom	50.252321832757	Nominal Dec [deg]
roll_nom	318.09577182312	Nominal Roll [deg]
revision	3	Processing version of data
ontime	38142.399926662	Sum of GTIs [s]
livetime	37644.041391594	Livetime [s]
ontime2	38142.399926662	Sum of GTIs [s]
ontime3	38132.977016002	Sum of GTIs [s]
ontime6	38142.399926662	Sum of GTIs [s]
ontime7	38142.399926662	Sum of GTIs [s]
ontime8	38139.259066105	Sum of GTIs [s]
l2events	230605	Number of level 2 events



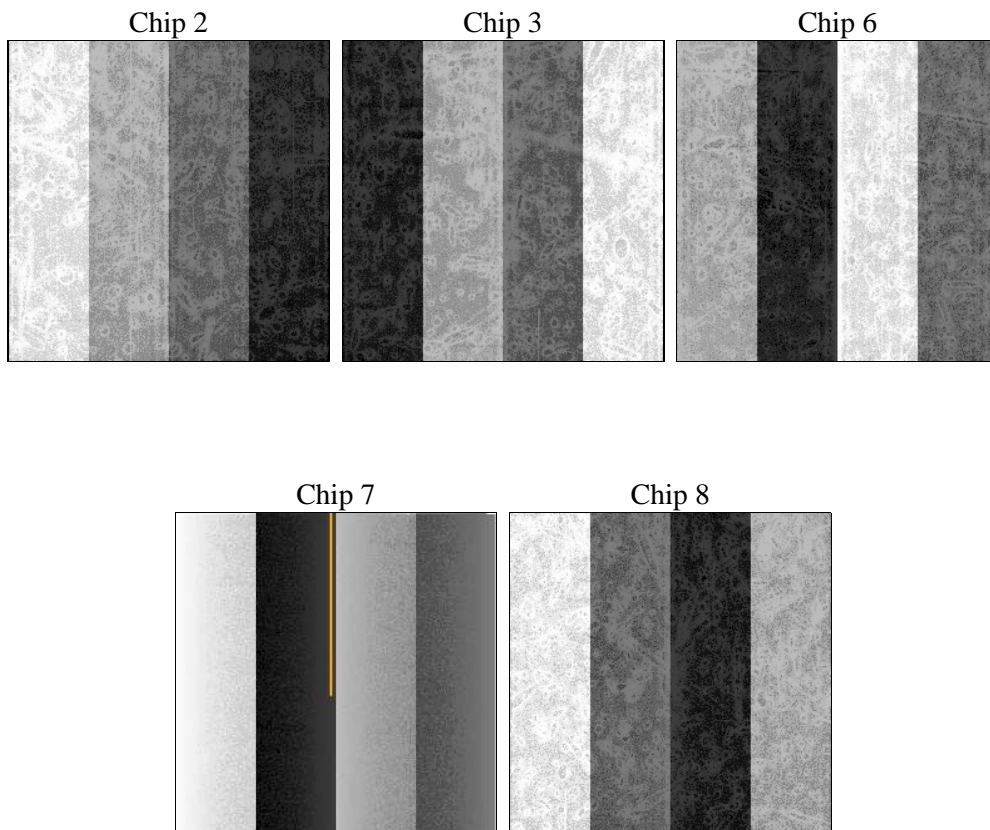
2 OBI

2.1 OBI

2.1.1 Images



2.1.2 Bias



2.1.3 Parameters

obi_num	0	Obi number	sched_exp_time	38000.000000	[s] Scheduled observation exposure time
ascdsver	8.4.5	Processing system revision	ontime	38142.399926662	Sum of GTIs [s]
caldbver	4.5.1.1	 	ontime2	38142.399926662	Sum of GTIs [s]
date	2012-09-26T04:13:35	Date and time of file creation	ontime3	38132.977016002	Sum of GTIs [s]
revision	3	Processing version of data	ontime6	38142.399926662	Sum of GTIs [s]
			ontime7	38142.399926662	Sum of GTIs [s]
			ontime8	38139.259066105	Sum of GTIs [s]
			l1events	1365043	Number of level 1 events

2.1.4 Events

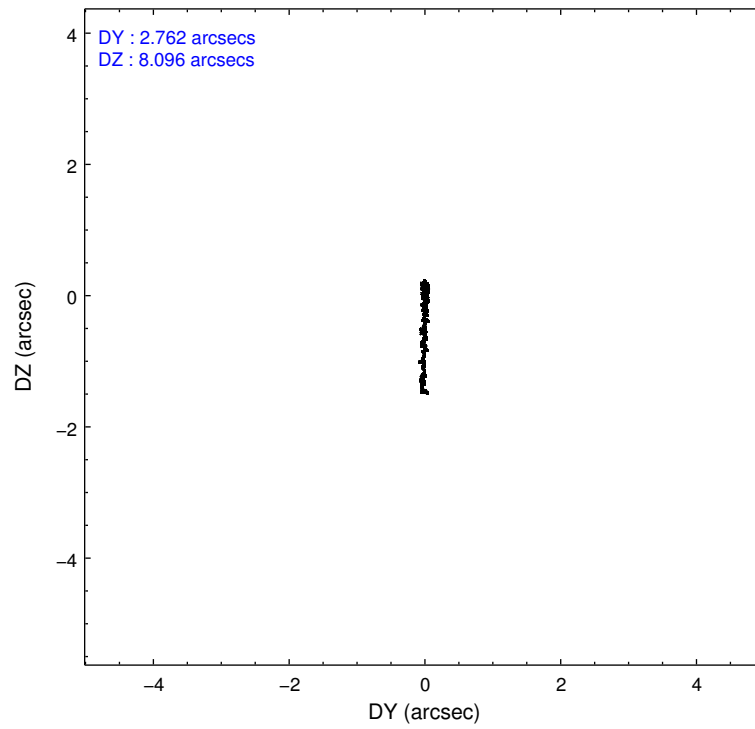
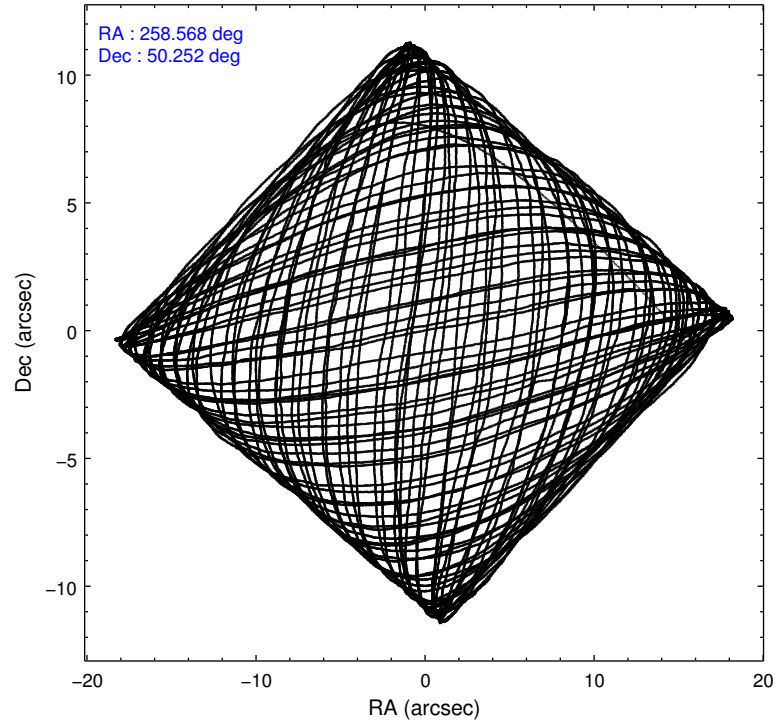
	ccd 2	ccd 3	ccd 6	ccd 7	ccd 8
level 1 events	238600	244692	249402	319068	313281
rejected events	210812	216650	220860	187475	250259
rejected %	88%	88%	88%	58%	79%

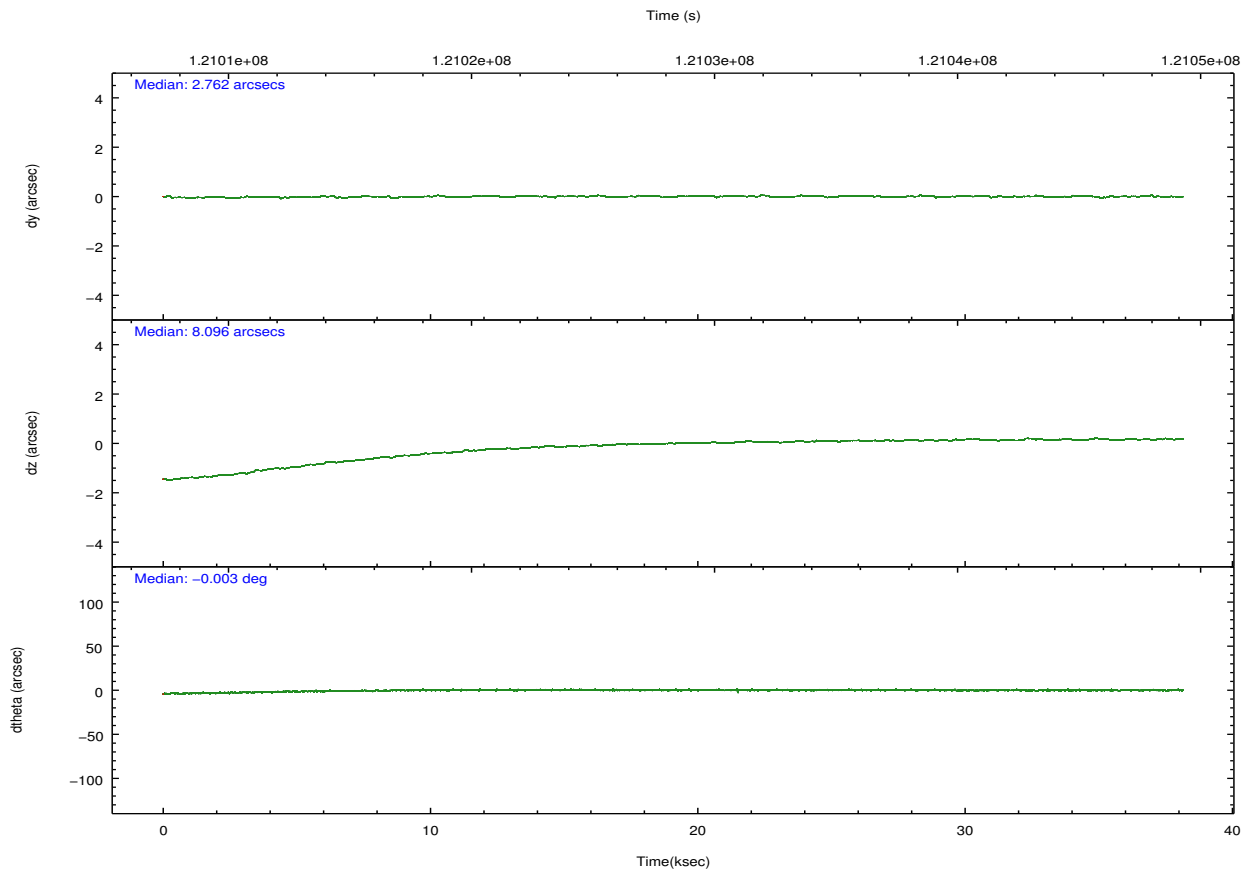
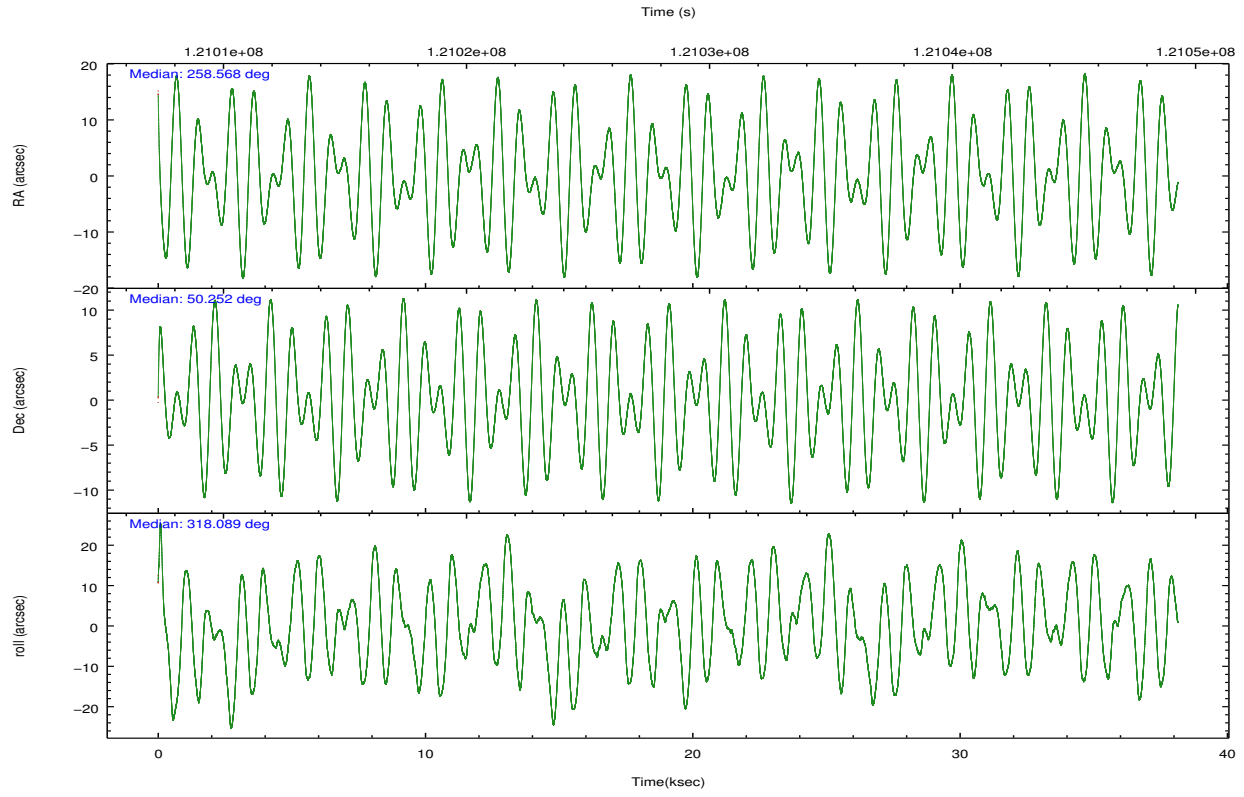
	ccd 2	ccd 3	ccd 6	ccd 7	ccd 8
grade 0 events	11905	11961	11351	12428	20315
	4%	4%	4%	3%	6%
grade 1 events	89	105	100	291	173
	0%	0%	0%	0%	0%
grade 2 events	6055	5745	5946	25958	13479
	2%	2%	2%	8%	4%
grade 3 events	2614	2650	2780	11940	6803
	1%	1%	1%	3%	2%
grade 4 events	2514	2652	2717	11932	6344
	1%	1%	1%	3%	2%
grade 5 events	8399	9723	10359	30673	13242
	3%	3%	4%	9%	4%
grade 6 events	4808	5167	5848	69875	16392
	2%	2%	2%	21%	5%
grade 7 events	202216	206689	210301	155971	236533
	84%	84%	84%	48%	75%

2.2 Compared Parameters

Parameter	Planned	Actual	Parameter	Planned	Actual
Instrument	ACIS	ACIS	Obspar format version number	7	7
Detector	ACIS-23678	ACIS-23678	Obspar file type	PREDICTED	ACTUAL
Grating	NONE	NONE	Obspar update status	NONE	UPDATED
Data mode	VFAINT	VFAINT	Number of optional ACIS chips dropped	0	0
Observation mode	POINTING	POINTING	On-chip summing requested	N	N
[deg] Pointing RA	258.526731	258.568543784526	Subarray requested	NONE	NONE
[deg] Pointing Dec	50.257622	50.25232183275722	Alternating exposures requested	N	N
[deg] Pointing Roll	317.971290	318.0957718231194	[s] Primary exposure time	0.000000	3.1
[mm] SIM focus pos	-0.684267	-0.6828225247311905			
[mm] SIM defocus	0	0.001444936568705701			
[mm] SIM translation stage pos	-190.132523	-190.1400660498719			
[mm] SIM translation stage offset	0	0.00754346686406393			
[s] Observation start time (MET)	121009364.184000	121008304.76545			
Observation start date	2001-11-01T13:41:40	2001-11-01T13:25:04			
[s] Observation end time (MET)	121047364.184000	121047970.72952			
Observation end date	2001-11-02T00:15:00	2001-11-02T00:26:10			
Read mode	TIMED	TIMED			

2.3 Aspect



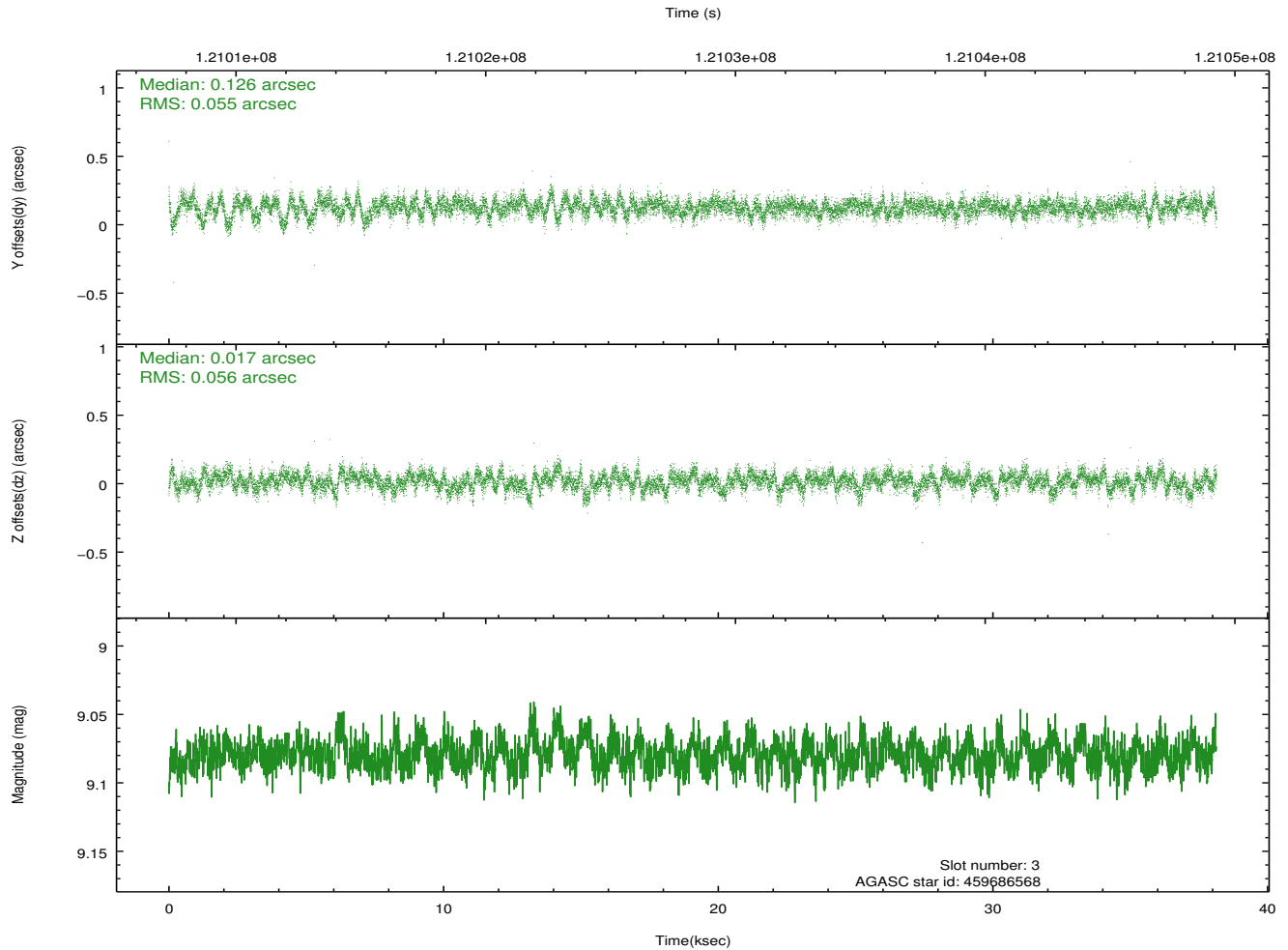
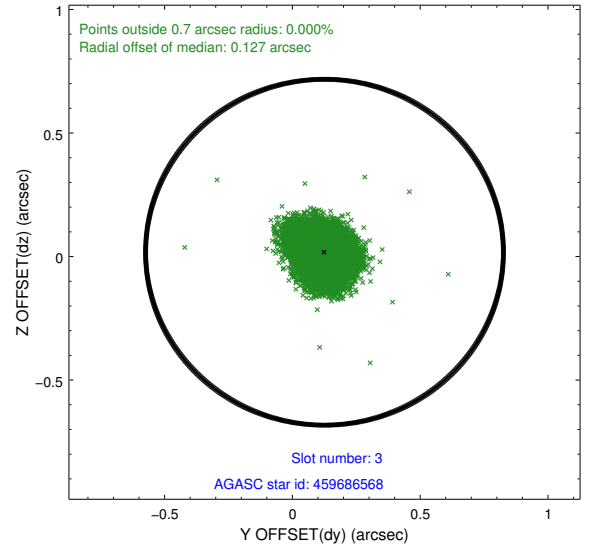
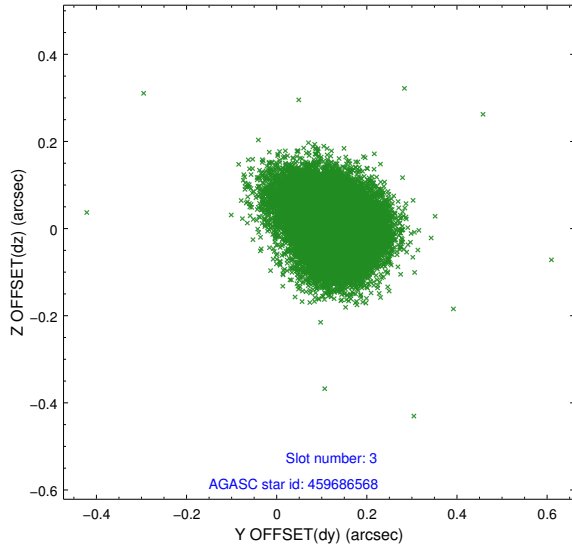


Slot Statistics

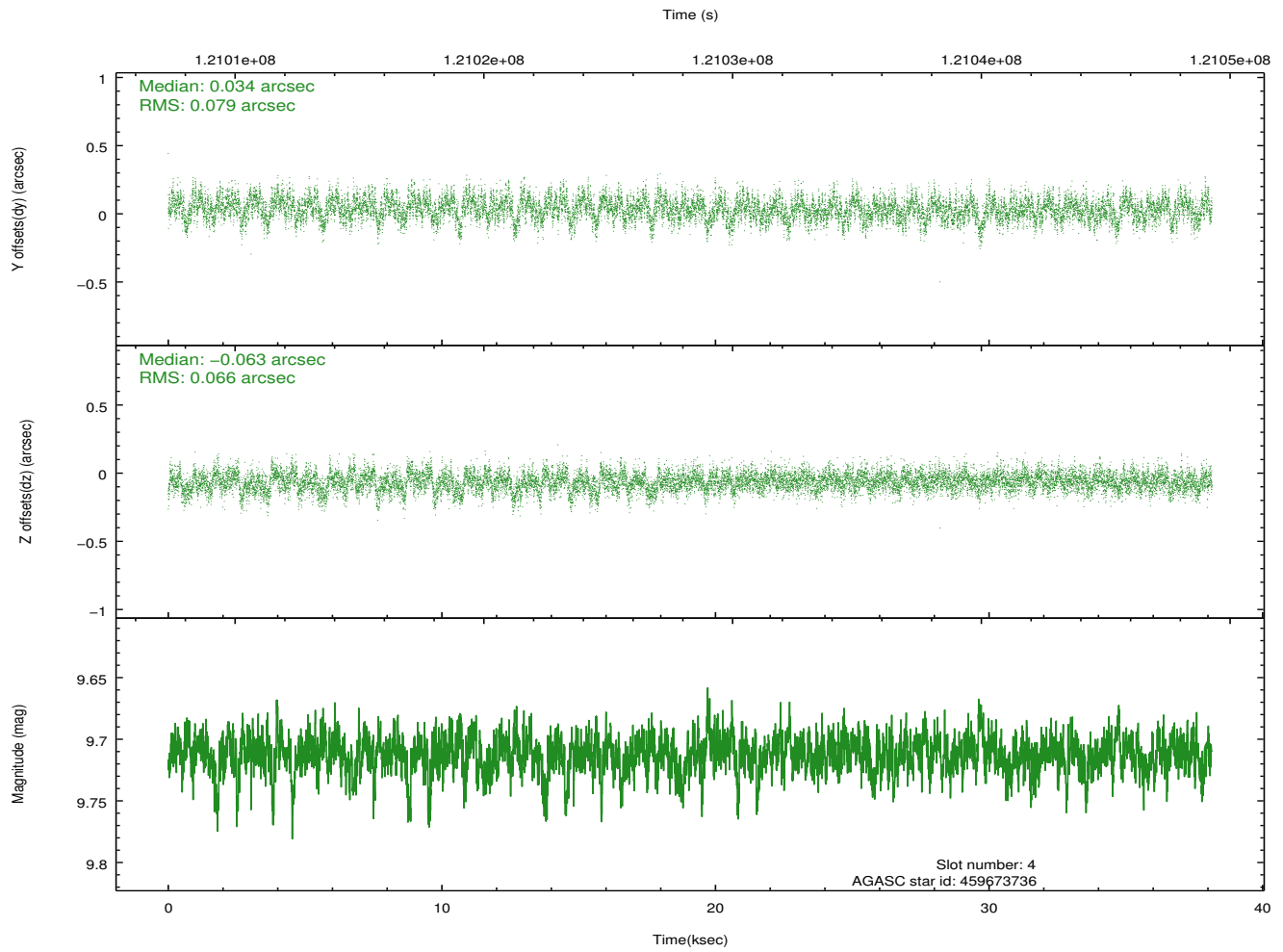
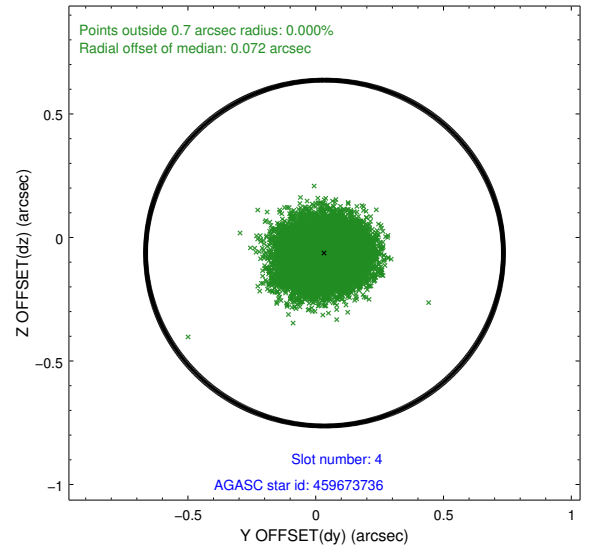
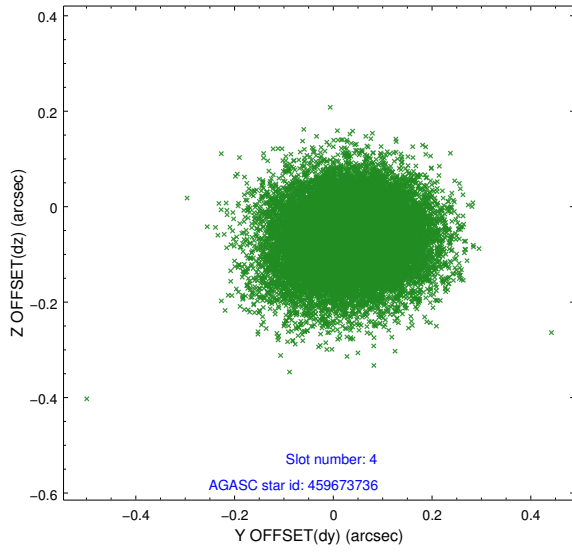
slot	status	id	mag	n_pts	med_dy	med_dz	dr1	dr2	ra	dec	mean_y	mean_z
0	FID	ACIS-S-2	7.11	9306	-0.003	-0.001	0.009	0.021	0.000000	0.000000	-755.41	-1729.05
1	FID	ACIS-S-4	7.20	9306	-0.047	0.002	0.006	0.011	0.000000	0.000000	2157.82	179.39
2	FID	ACIS-S-5	7.24	9306	0.019	0.009	0.009	0.020	0.000000	0.000000	-1808.19	173.12
3	GUIDE	459686568	9.08	18605	0.126	0.017	0.082	0.138	258.676405	50.037938	787.45	-354.99
4	GUIDE	459673736	9.71	18563	0.034	-0.063	0.109	0.180	258.305743	50.657677	-1338.42	732.75
5	GUIDE	459276592	10.00	18520	-0.153	0.040	0.182	0.346	258.370990	49.944856	486.41	-1077.24
6	GUIDE	459280992	10.00	18602	-0.036	-0.004	0.112	0.189	258.359225	49.736794	966.68	-1653.07
7	GUIDE	459276960	9.65	18590	0.036	0.010	0.113	0.187	258.304821	49.575360	1260.48	-2170.46

2.4 Star Slots

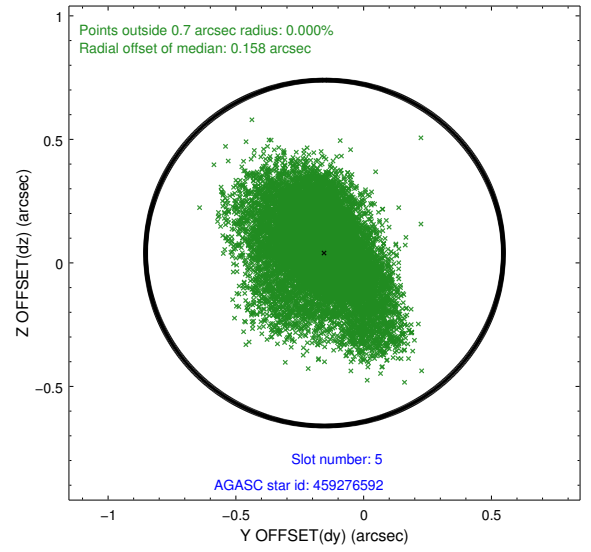
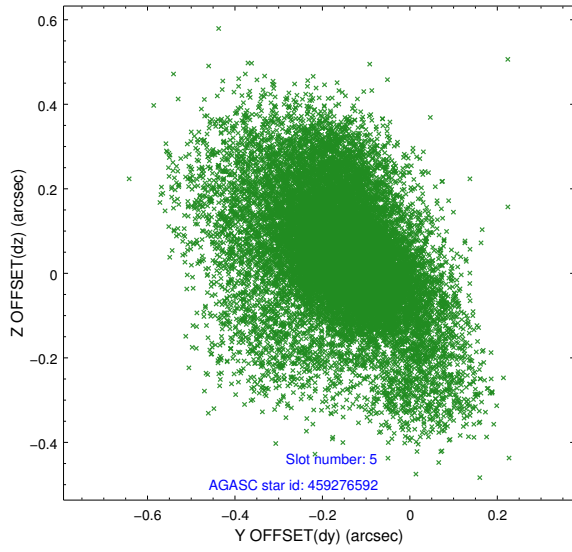
2.4.1 Slot 3



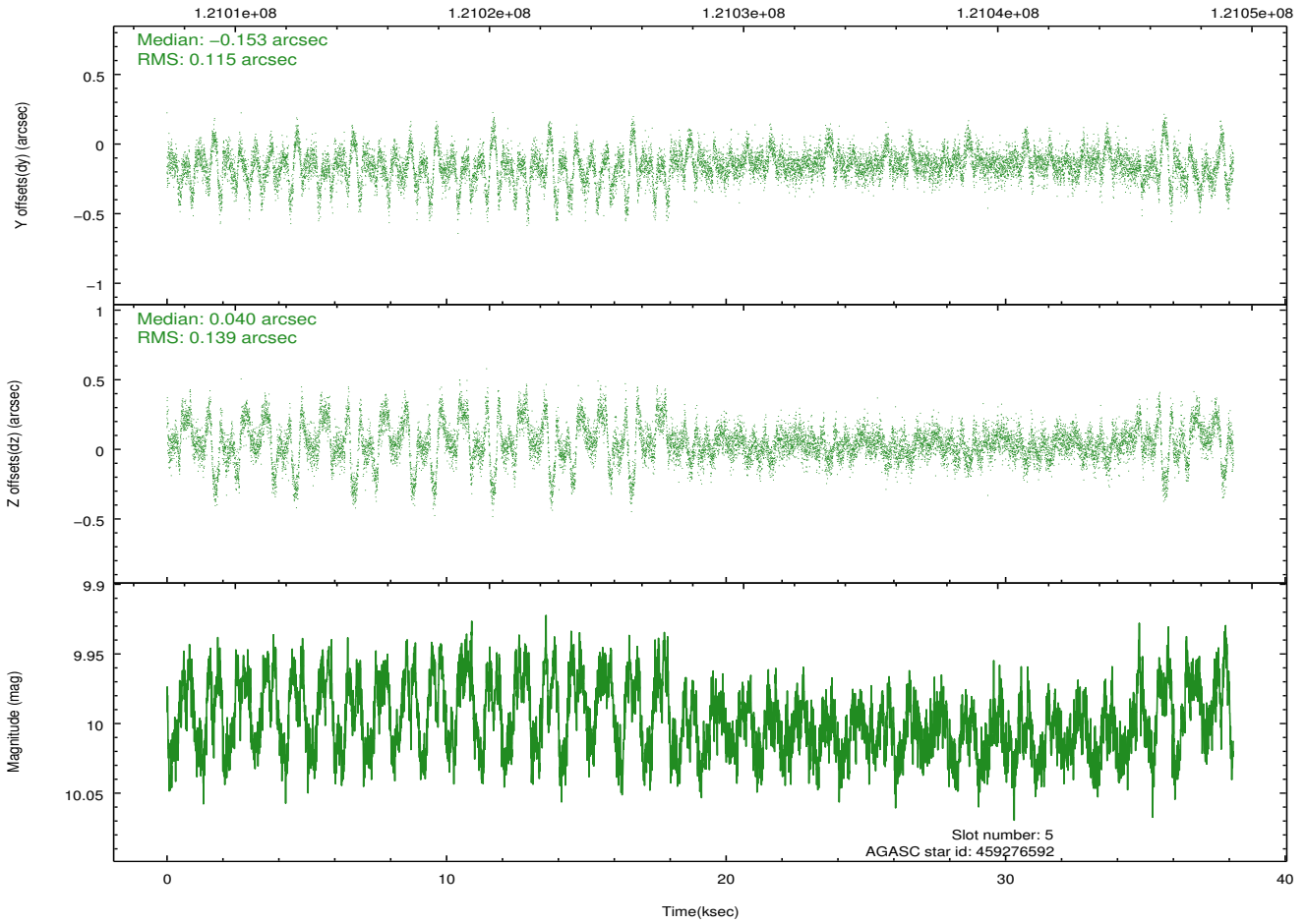
2.4.2 Slot 4



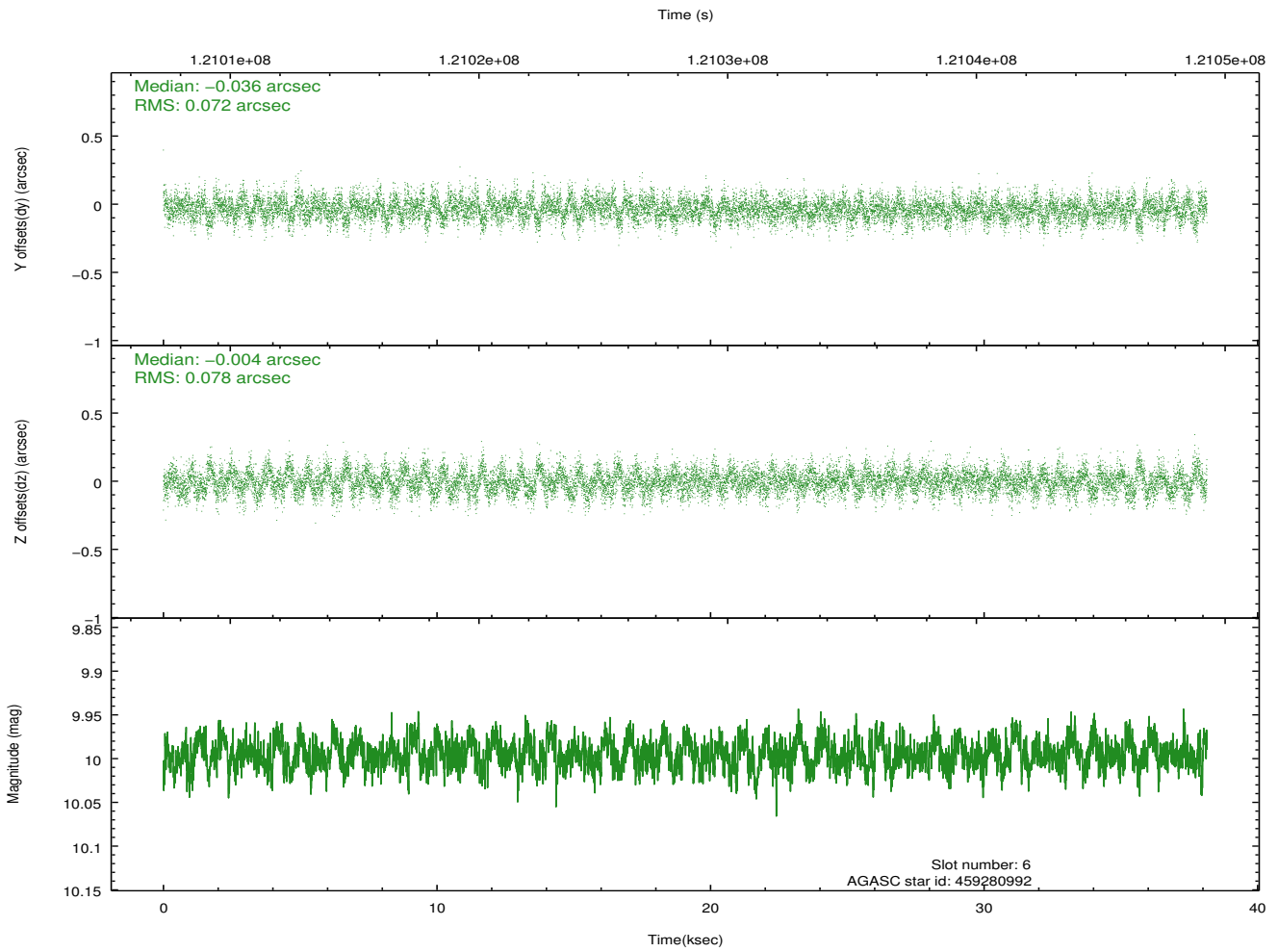
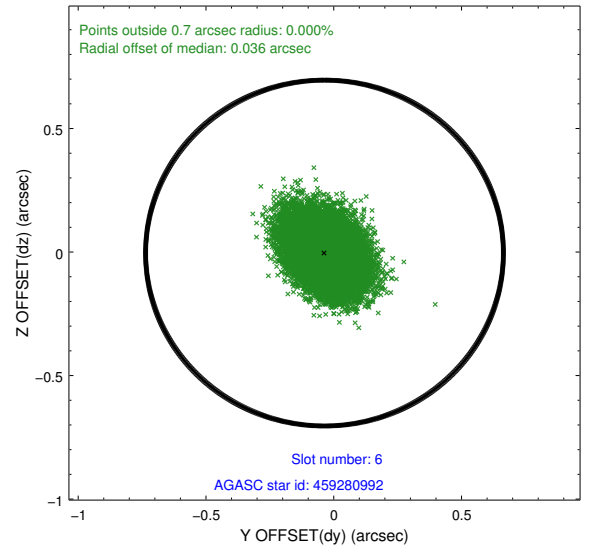
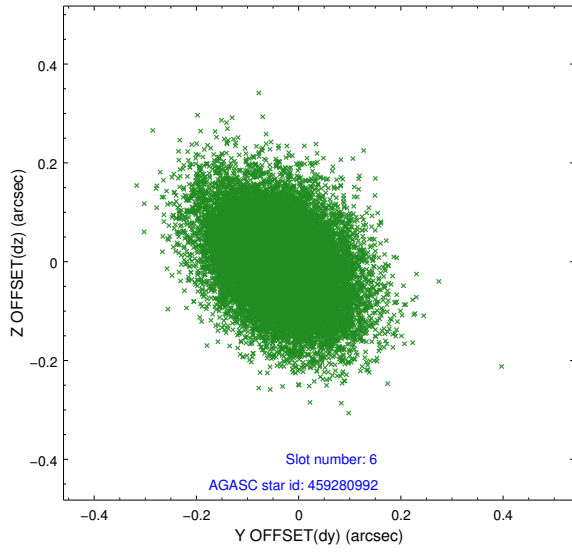
2.4.3 Slot 5



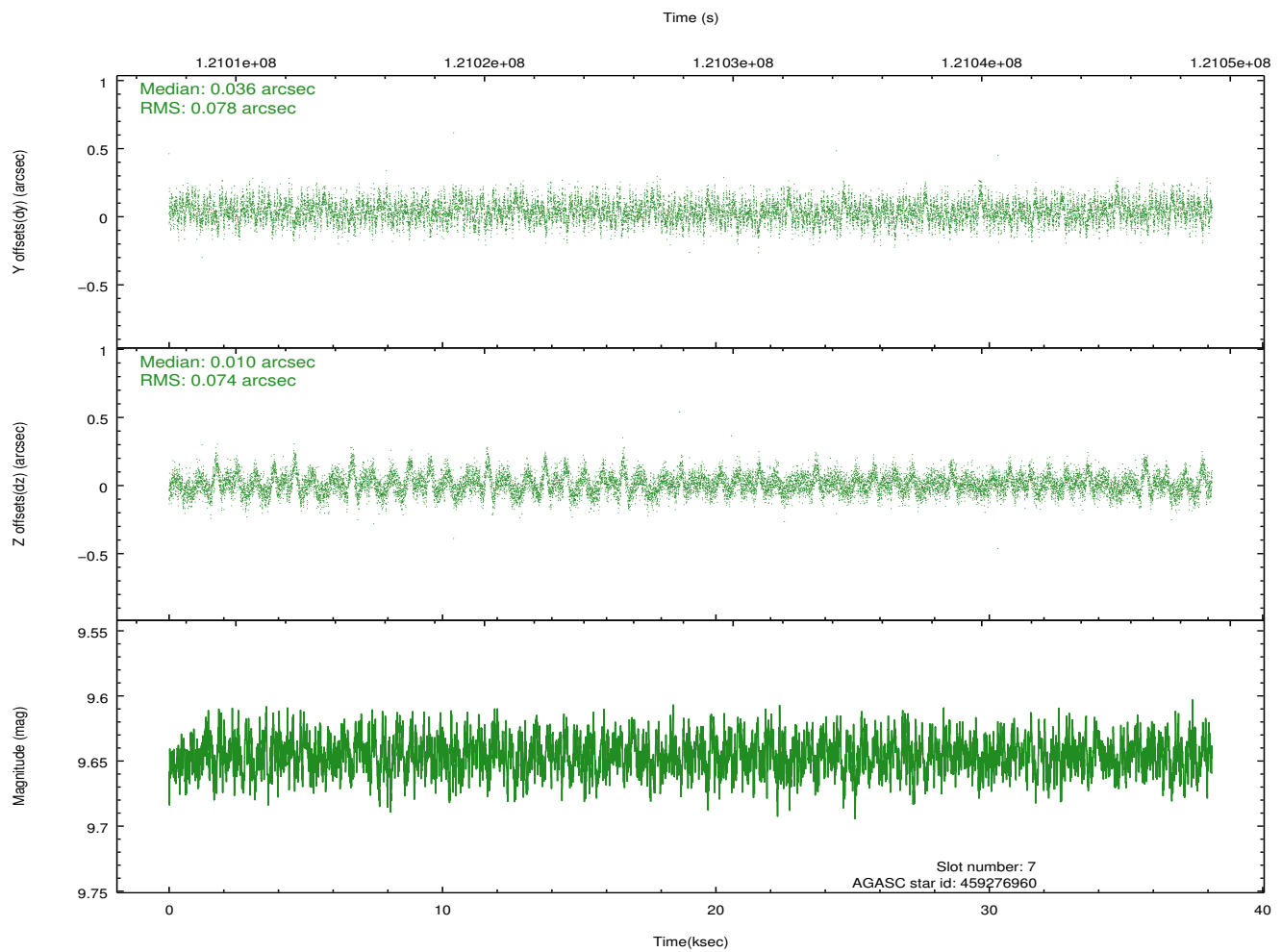
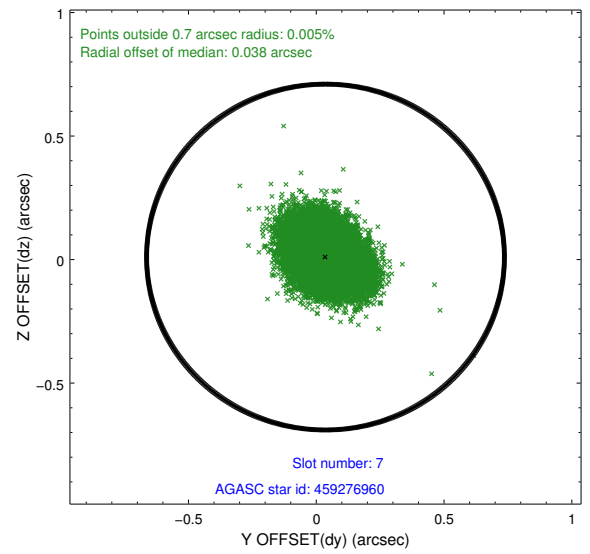
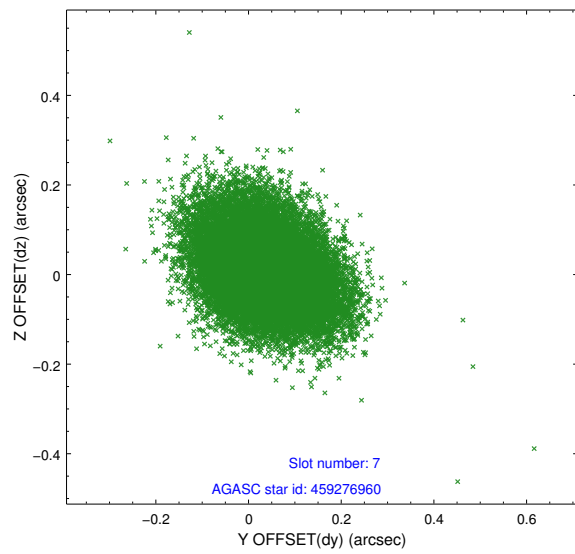
Time (s)



2.4.4 Slot 6

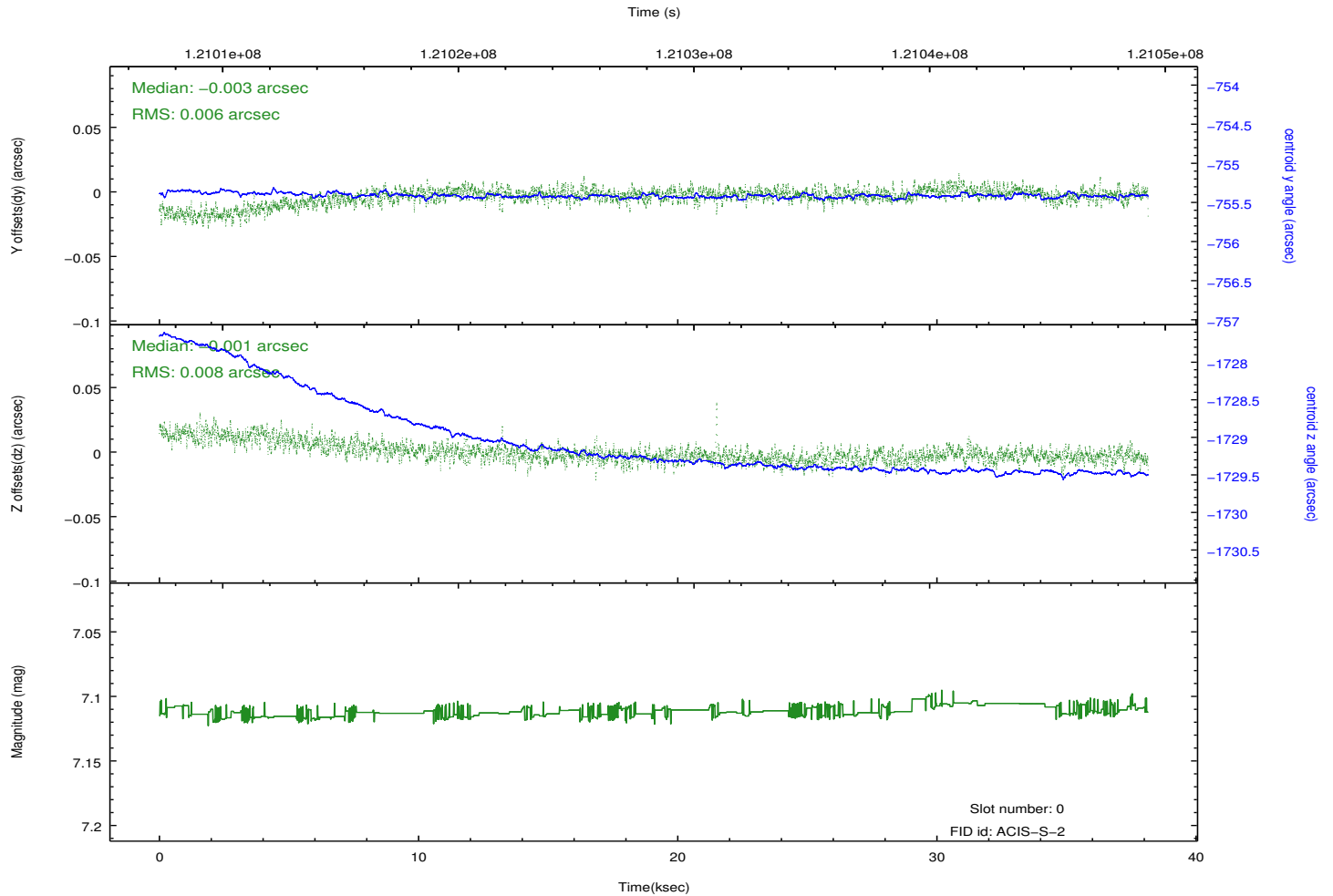
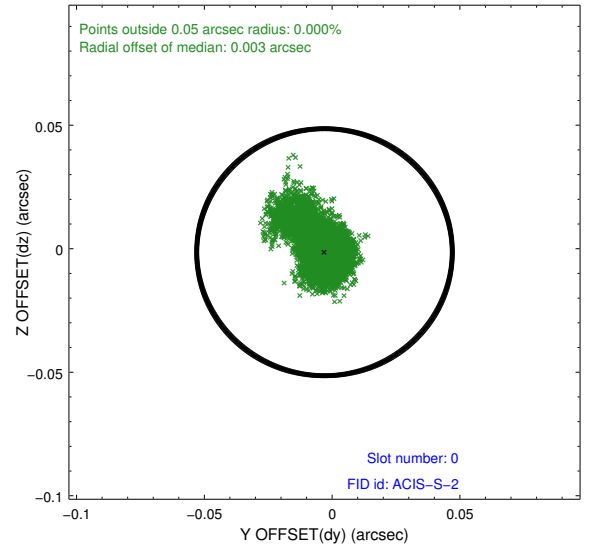
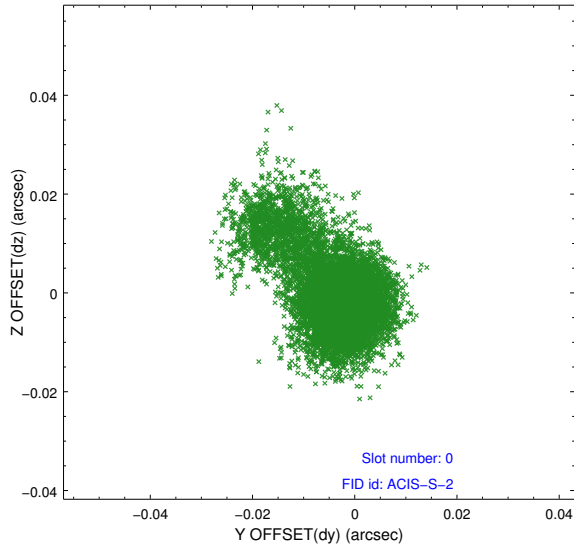


2.4.5 Slot 7

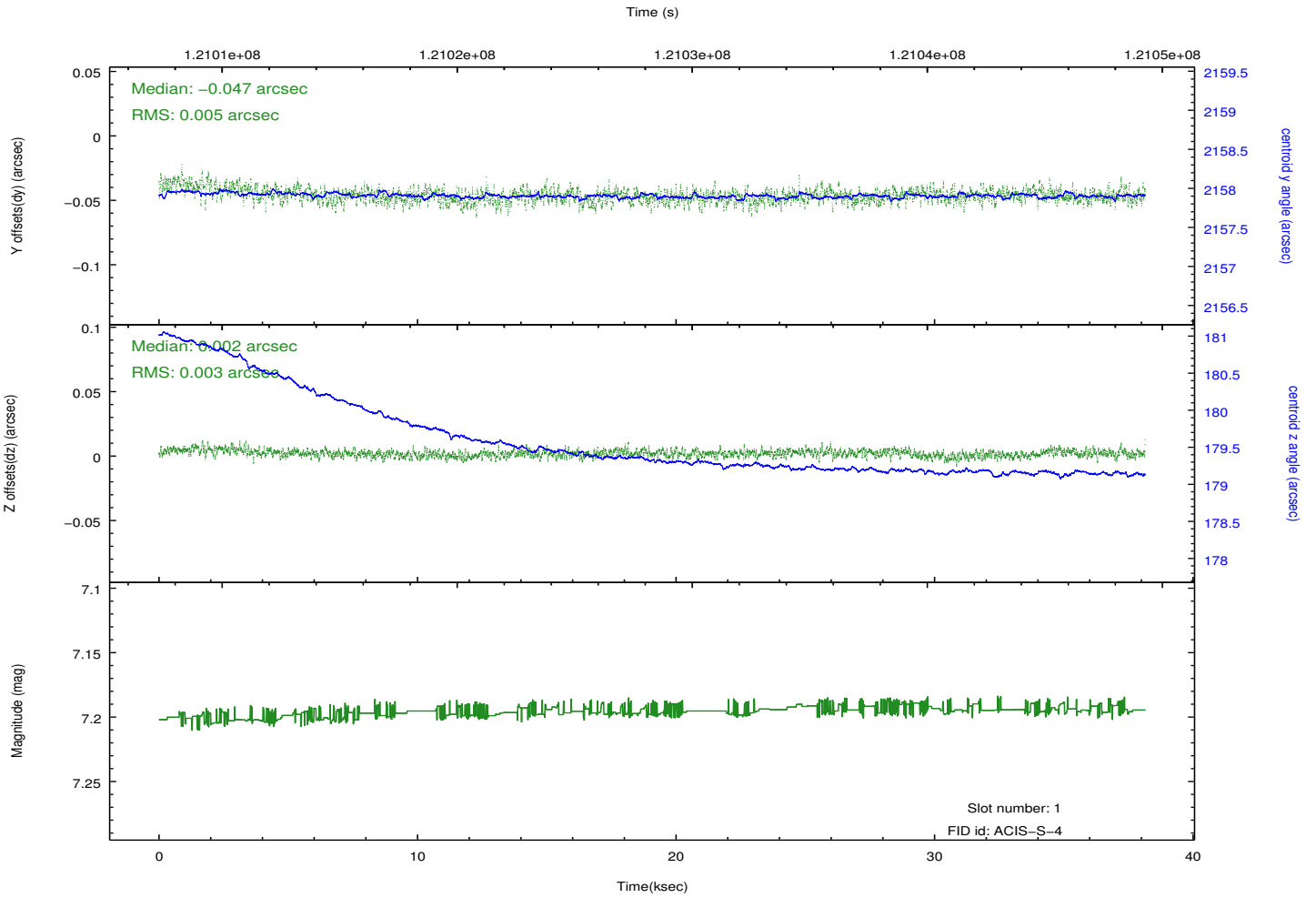
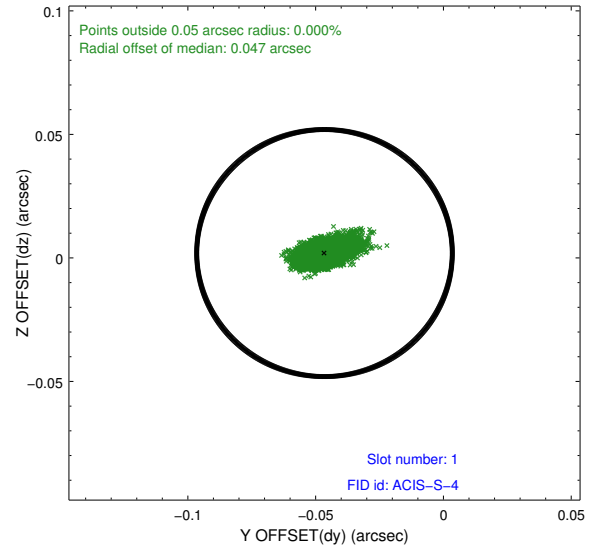
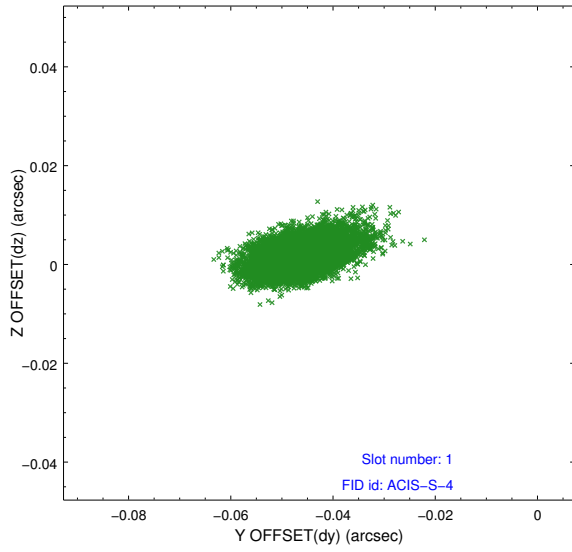


2.5 FID Slots

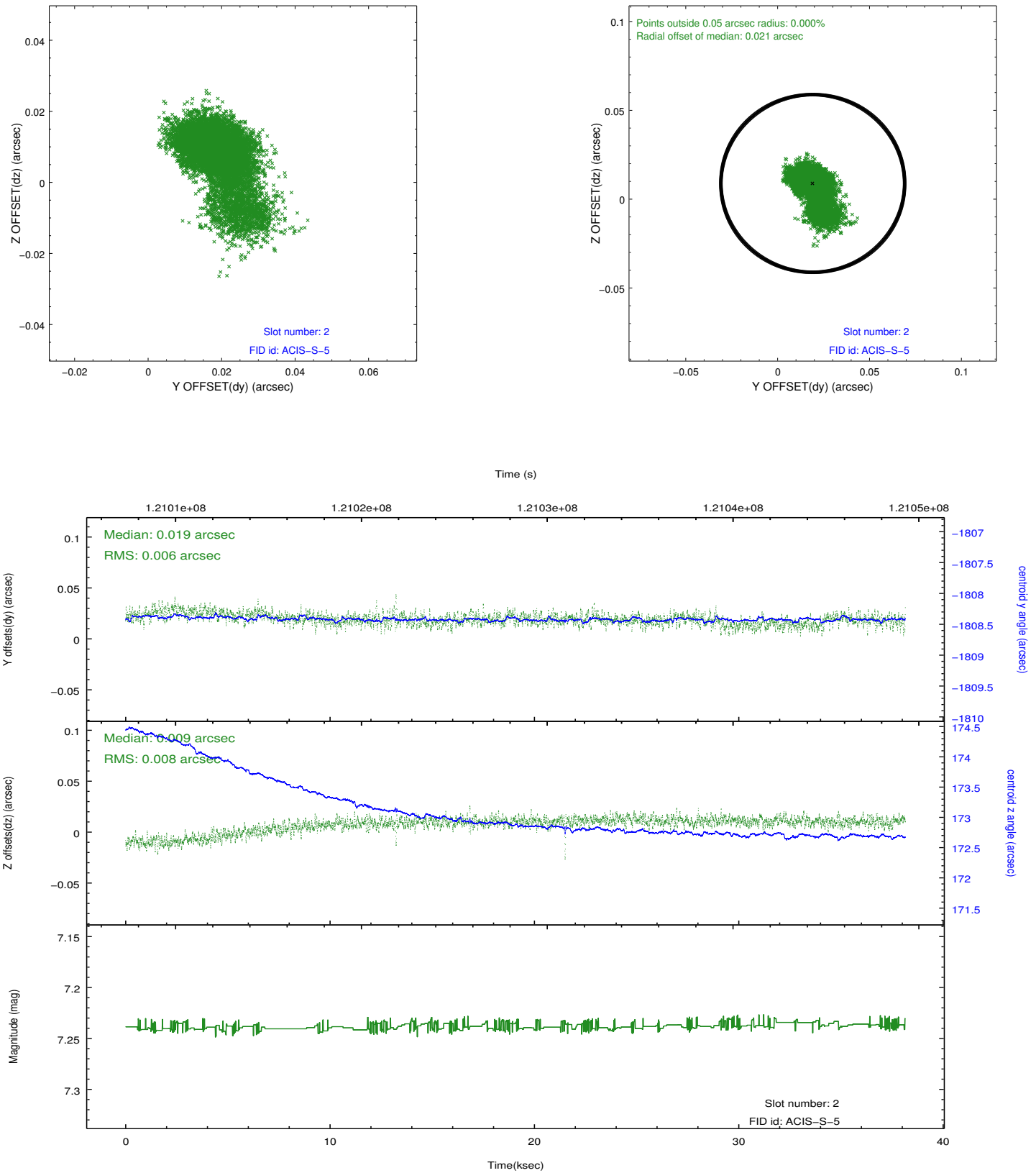
2.5.1 Slot 0



2.5.2 Slot 1



2.5.3 Slot 2



A Summary

A.1 Status

V&V Scientist	Beth Sundheim
V&V Date (YYYY-MM-DD)	2012.09.27
V&V Edition	1
V&V Disposition and Status	OK
V&V Charge Time	38.142

A.2 Comments