

# V&V Reference Report

## L2 ASCDS Version : 8.4.5

Observation 2551 - L2 Version 3  
Chandra X-Ray Center

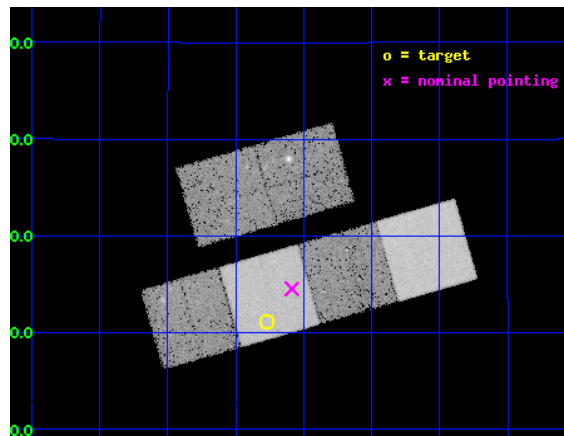
L2 Processing Date : Oct 14 2012

## Contents

<b>1</b>	<b>Front</b>	<b>2</b>
<b>2</b>	<b>OBI</b>	<b>3</b>
2.1	OBI . . . . .	3
2.1.1	Images . . . . .	3
2.1.2	Bias . . . . .	3
2.1.3	Parameters . . . . .	4
2.1.4	Events . . . . .	4
2.2	Compared Parameters . . . . .	5
2.3	Aspect . . . . .	6
2.4	Star Slots . . . . .	9
2.4.1	Slot 3 . . . . .	9
2.4.2	Slot 4 . . . . .	10
2.4.3	Slot 5 . . . . .	11
2.4.4	Slot 6 . . . . .	12
2.4.5	Slot 7 . . . . .	13
2.5	FID Slots . . . . .	14
2.5.1	Slot 0 . . . . .	14
2.5.2	Slot 1 . . . . .	15
2.5.3	Slot 2 . . . . .	16
<b>A</b>	<b>Summary</b>	<b>17</b>
A.1	Status . . . . .	17
A.2	Comments . . . . .	17

# 1 Front

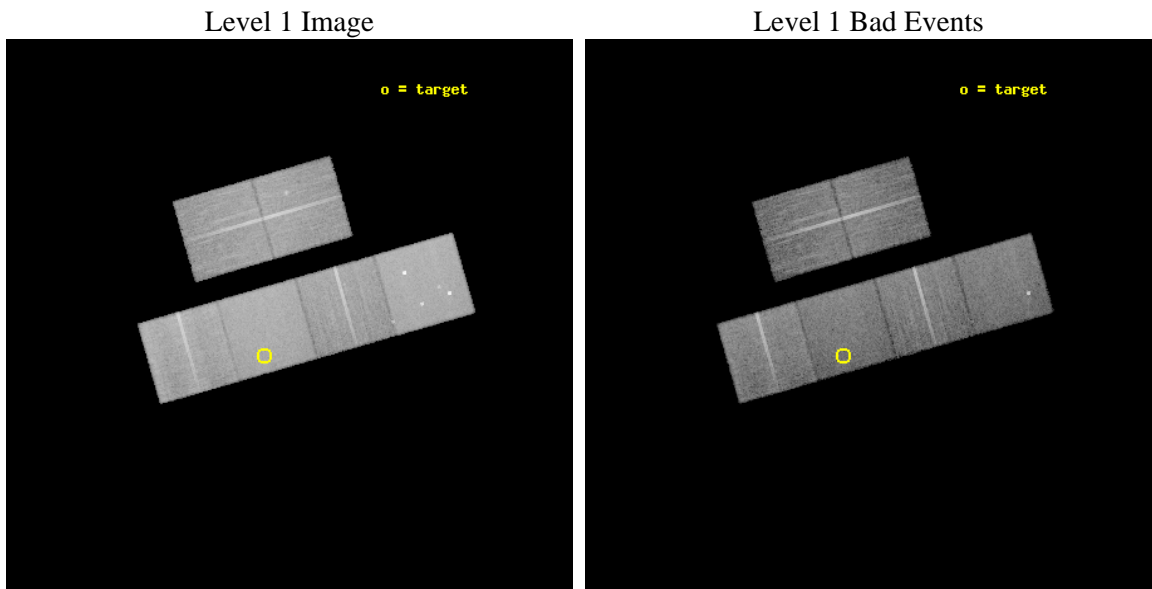
seq_num	200159	Sequence number
obs_id	2551	Observation id
title	STELLAR CORONAE AT THE BOTTOM OF THE MAIN SEQUENCE: A MULTI-WAVELENGTH STUDY	Proposal title
observer	Prof. Robert Rutledge	Principal investigator
object	2MASSW0036+18	Source name
dtcycle	0	&#160
cycle	P	events from which exps? Prim/Second/Both
ra_targ	9.066667	Observer's specified target RA [deg]
dec_targ	18.352778	Observer's specified target Dec [deg]
ra_nom	9.0215020882402	Nominal RA [deg]
dec_nom	18.409143112758	Nominal Dec [deg]
roll_nom	163.98193422187	Nominal Roll [deg]
revision	3	Processing version of data
ontime	21756.79991895	Sum of GTIs [s]
livetime	21481.302218004	Livetime [s]
ontime2	21756.79991895	Sum of GTIs [s]
ontime3	21756.79991895	Sum of GTIs [s]
ontime5	21756.79991895	Sum of GTIs [s]
ontime6	21756.79991895	Sum of GTIs [s]
ontime7	21756.79991895	Sum of GTIs [s]
ontime8	21753.558938682	Sum of GTIs [s]
l2events	212833	Number of level 2 events



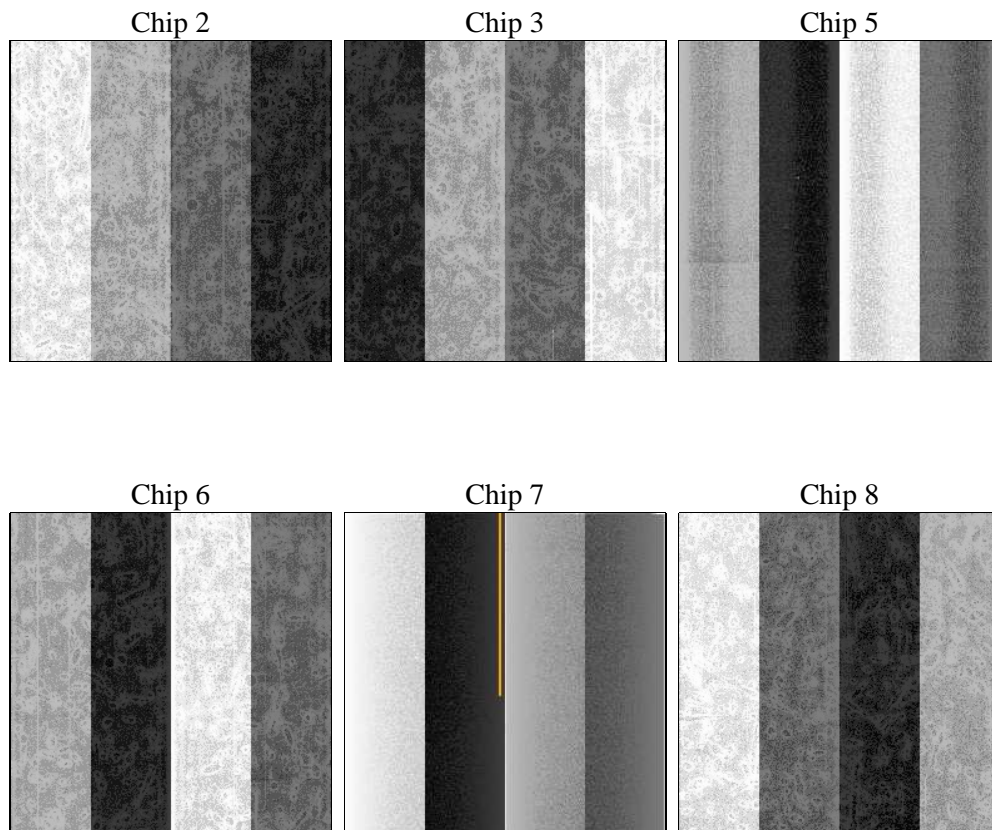
## 2 OBI

### 2.1 OBI

#### 2.1.1 Images



#### 2.1.2 Bias



### 2.1.3 Parameters

obi_num	0	Obi number	sched_exp_time	22000.000000	[s] Scheduled observation exposure time
ascdsver	8.4.5	Processing system revision	ontime	21756.79991895	Sum of GTIs [s]
caldsver	4.5.2	&#160	ontime2	21756.79991895	Sum of GTIs [s]
date	2012-10-14T20:49:00	Date and time of file creation	ontime3	21756.79991895	Sum of GTIs [s]
revision	3	Processing version of data	ontime5	21756.79991895	Sum of GTIs [s]
			ontime6	21756.79991895	Sum of GTIs [s]
			ontime7	21756.79991895	Sum of GTIs [s]
			ontime8	21753.558938682	Sum of GTIs [s]
			l1events	959692	Number of level 1 events

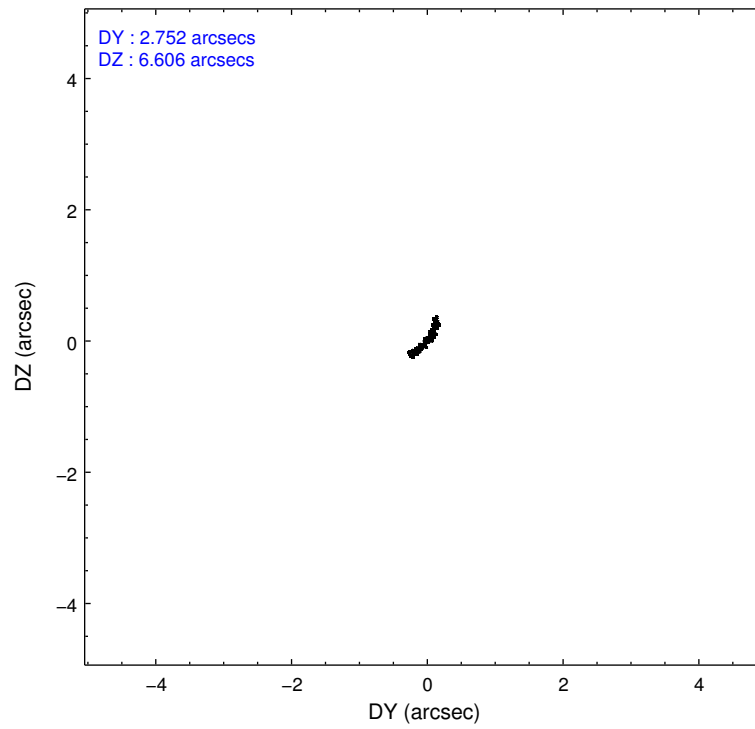
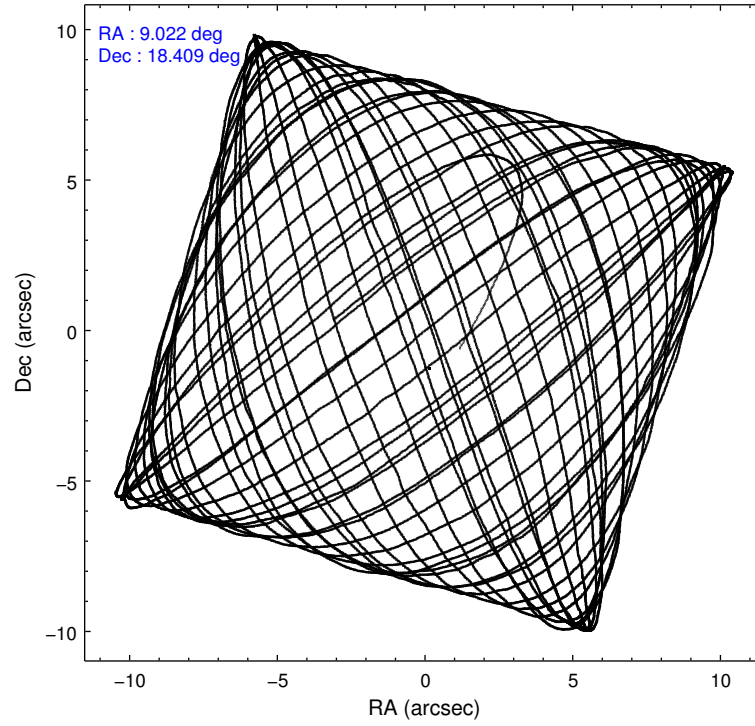
### 2.1.4 Events

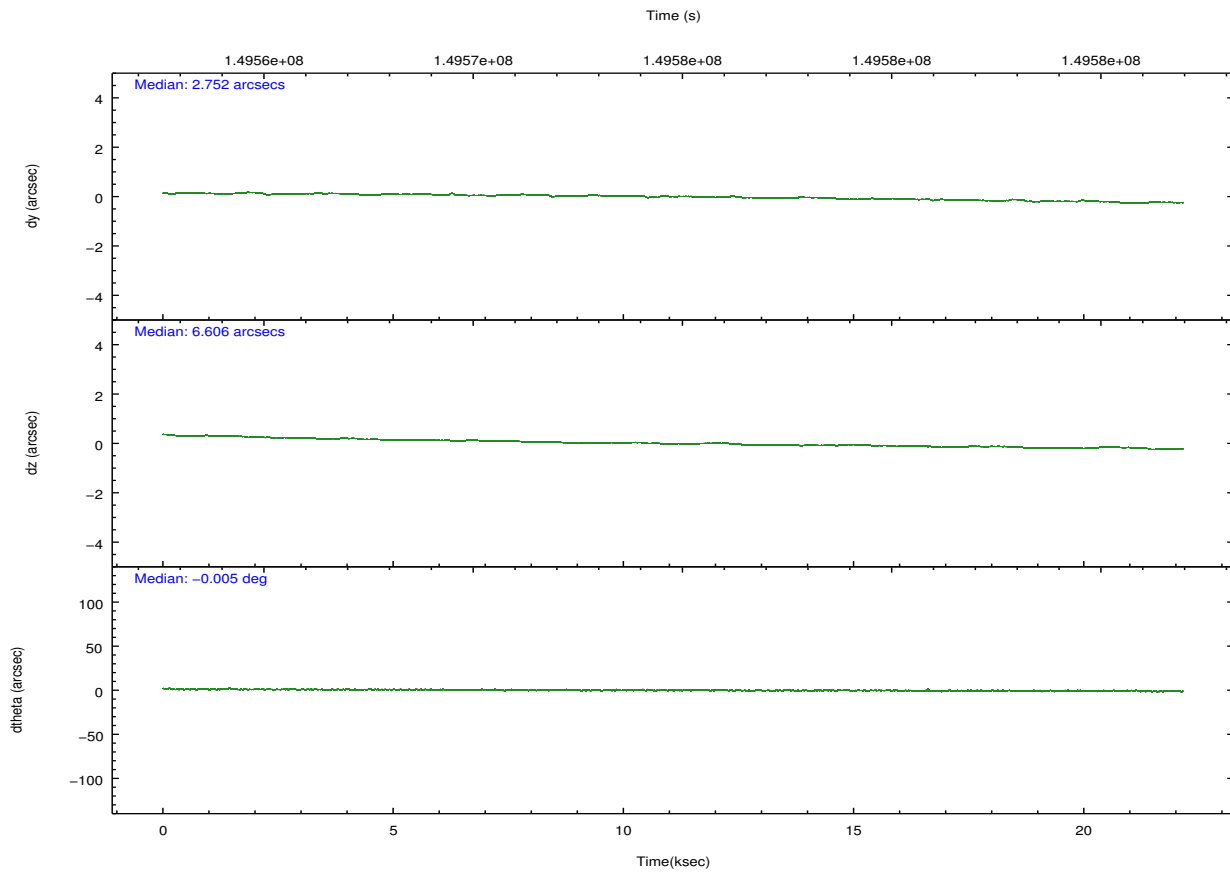
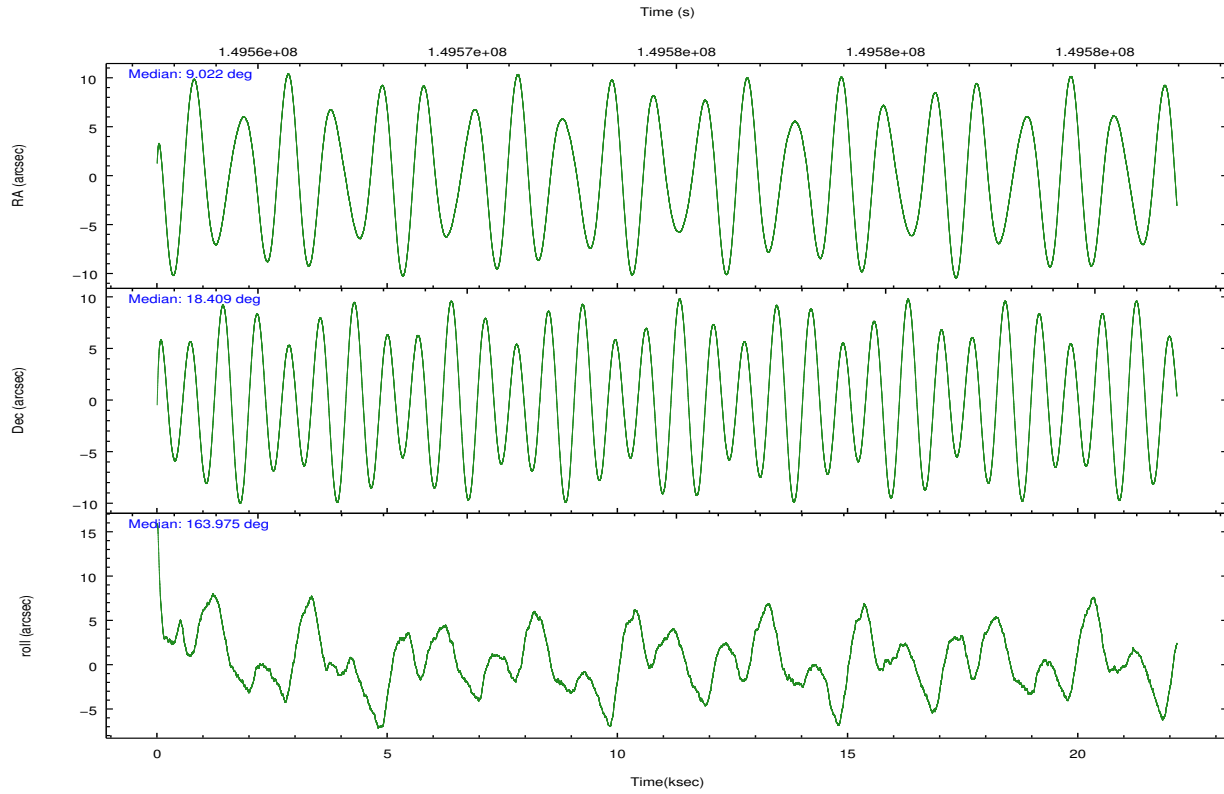
	ccd 2	ccd 3	ccd 5	ccd 6	ccd 7	ccd 8		ccd 2	ccd 3	ccd 5	ccd 6	ccd 7	ccd 8
level 1 events	138794	131152	200994	138291	177319	173142	grade 0 events	7921	7206	12086	6407	6625	11787
rejected events	121852	115231	108160	121982	104498	136192		5%	5%	6%	4%	3%	6%
rejected %	87%	87%	53%	88%	58%	78%	grade 1 events	80	75	273	64	161	100
								0%	0%	0%	0%	0%	0%
							grade 2 events	3319	2972	26504	3362	14553	7754
								2%	2%	13%	2%	8%	4%
							grade 3 events	1519	1537	4351	1641	6575	4132
								1%	1%	2%	1%	3%	2%
							grade 4 events	1541	1538	3446	1600	6408	3714
								1%	1%	1%	1%	3%	2%
							grade 5 events	5301	5637	15646	5985	17035	7733
								3%	4%	7%	4%	9%	4%
							grade 6 events	2644	2673	46479	3305	38676	9569
								1%	2%	23%	2%	21%	5%
							grade 7 events	116469	109514	92209	115927	87286	128353
								83%	83%	45%	83%	49%	74%

## 2.2 Compared Parameters

Parameter	Planned	Actual	Parameter	Planned	Actual
Instrument	ACIS	ACIS	Obspar format version number	7	7
Detector	ACIS-235678	ACIS-235678	Obspar file type	PREDICTED	ACTUAL
Grating	NONE	NONE	Obspar update status	NONE	UPDATED
Data mode	FAINT	FAINT	Number of optional ACIS chips dropped	0	0
Observation mode	POINTING	POINTING	On-chip summing requested	N	N
[deg] Pointing RA	9.049260	9.021502088240201	Subarray requested	NONE	NONE
[deg] Pointing Dec	18.416054	18.40914311275784	Alternating exposures requested	N	N
[deg] Pointing Roll	163.816529	163.9819342218676	[s] Primary exposure time	0.000000	3.2
[s] Window start time (MET)	146707264.184000	146707264.184000			
[s] Window stop time (MET)	151977664.184000	151977664.184000			
[mm] SIM focus pos	-0.684267	-0.6828225247311905			
[mm] SIM defocus	0	0.001444936568705701			
[mm] SIM translation stage pos	-190.132523	-190.1425803651734			
[mm] SIM translation stage offset	0	0.01005778216563158			
[s] Observation start time (MET)	149563848.184000	149562649.83845			
Observation start date	2002-09-28T01:29:44	2002-09-28T01:10:49			
[s] Observation end time (MET)	149585848.184000	149586971.55196			
Observation end date	2002-09-28T07:36:24	2002-09-28T07:56:11			
Read mode	TIMED	TIMED			

## 2.3 Aspect





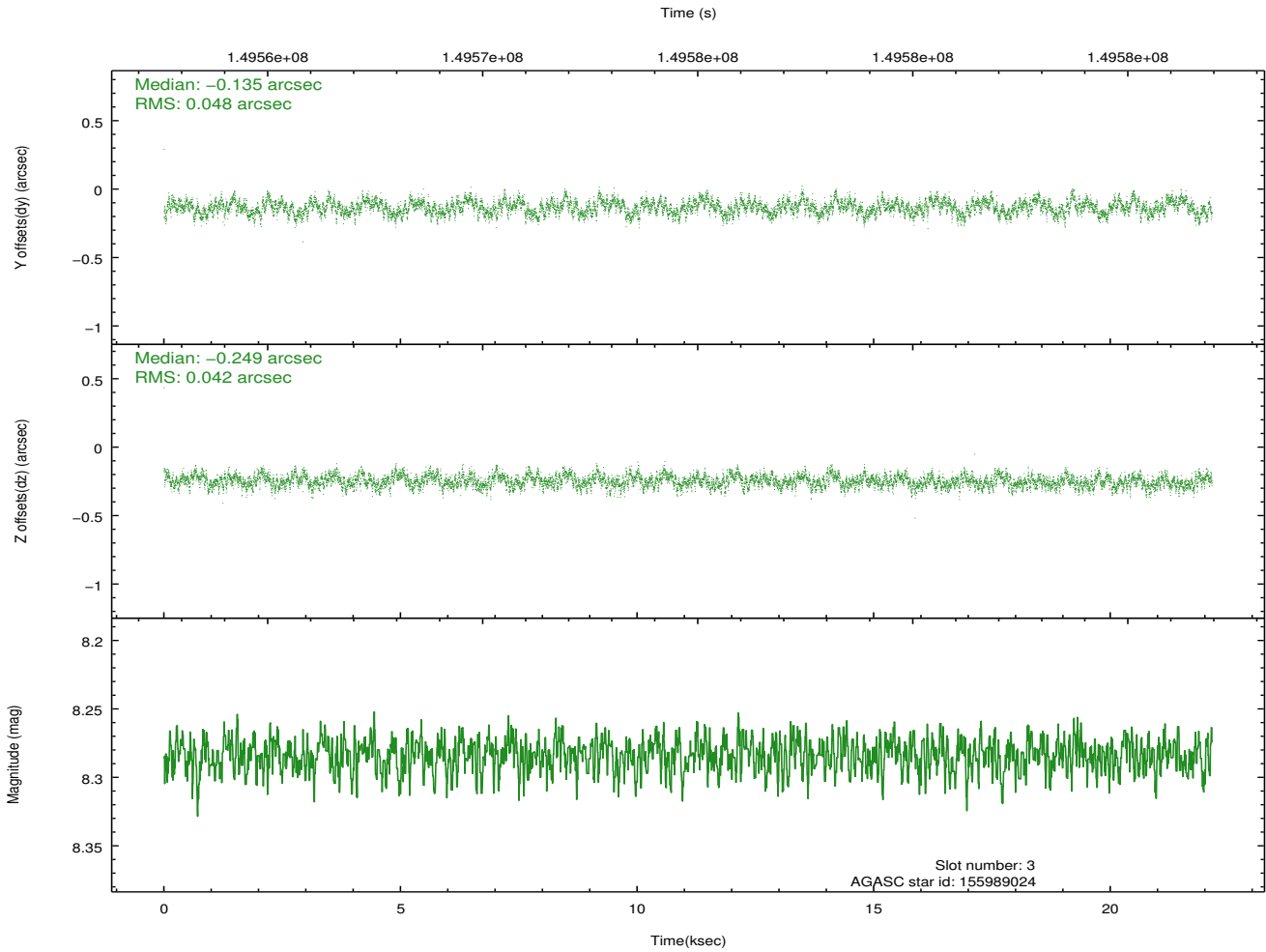
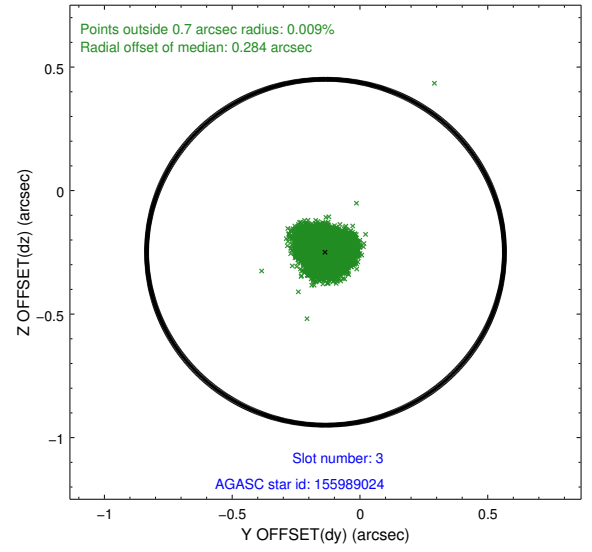
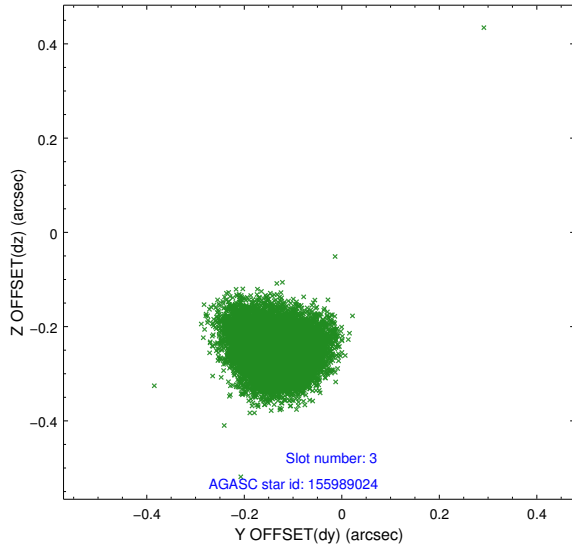
### Slot Statistics

slot	status	id	mag	n_pts	med_dy	med_dz	dr1	dr2	ra	dec	mean_y	mean_z
0	FID	ACIS-S-2	7.11	5402	-0.032	0.006	0.008	0.013	0.000000	0.000000	-755.38	-1727.73
1	FID	ACIS-S-4	7.20	5402	-0.007	0.014	0.006	0.010	0.000000	0.000000	2157.83	180.64
2	FID	ACIS-S-5	7.24	5401	0.008	-0.011	0.008	0.014	0.000000	0.000000	-1808.00	174.42
3	GUIDE	155989024	8.28	10804	-0.135	-0.249	0.069	0.108	8.316715	17.959359	1952.30	2274.09
4	GUIDE	155985888	8.39	10798	0.032	0.007	0.085	0.138	8.612937	19.083305	2096.22	-1893.85
5	GUIDE	155980784	8.74	10802	0.065	0.031	0.090	0.139	8.486301	18.788064	2217.13	-753.37
6	GUIDE	155981496	9.44	10796	-0.004	0.046	0.127	0.216	8.903668	19.084998	1147.64	-2174.04
7	GUIDE	155982120	9.46	10796	0.043	0.176	0.102	0.160	9.463684	18.900815	-868.13	-2070.41

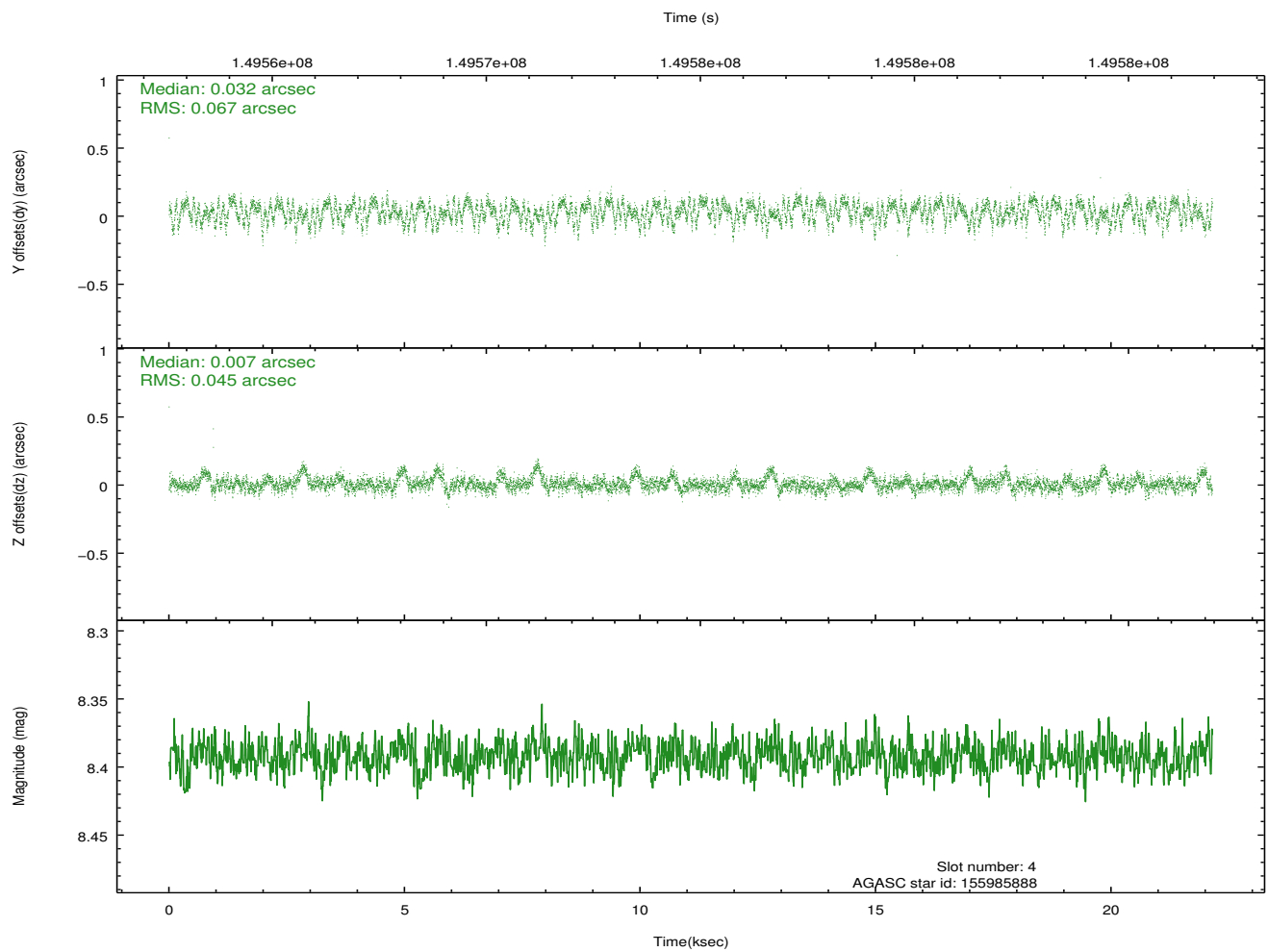
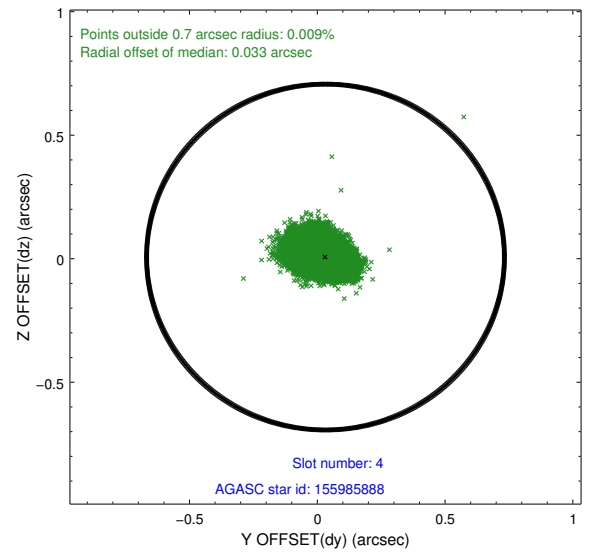
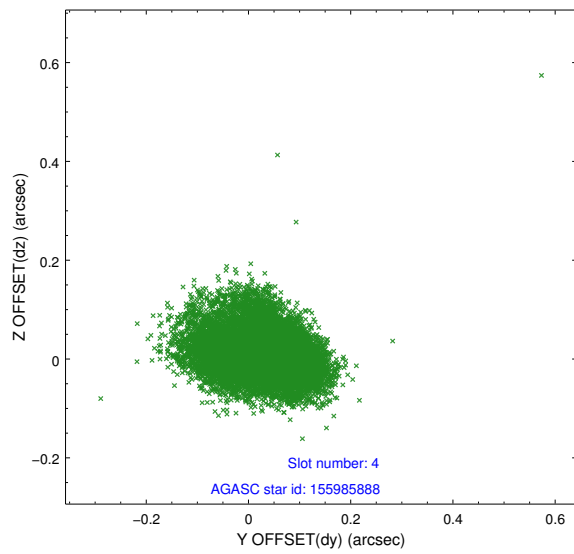
∞

## 2.4 Star Slots

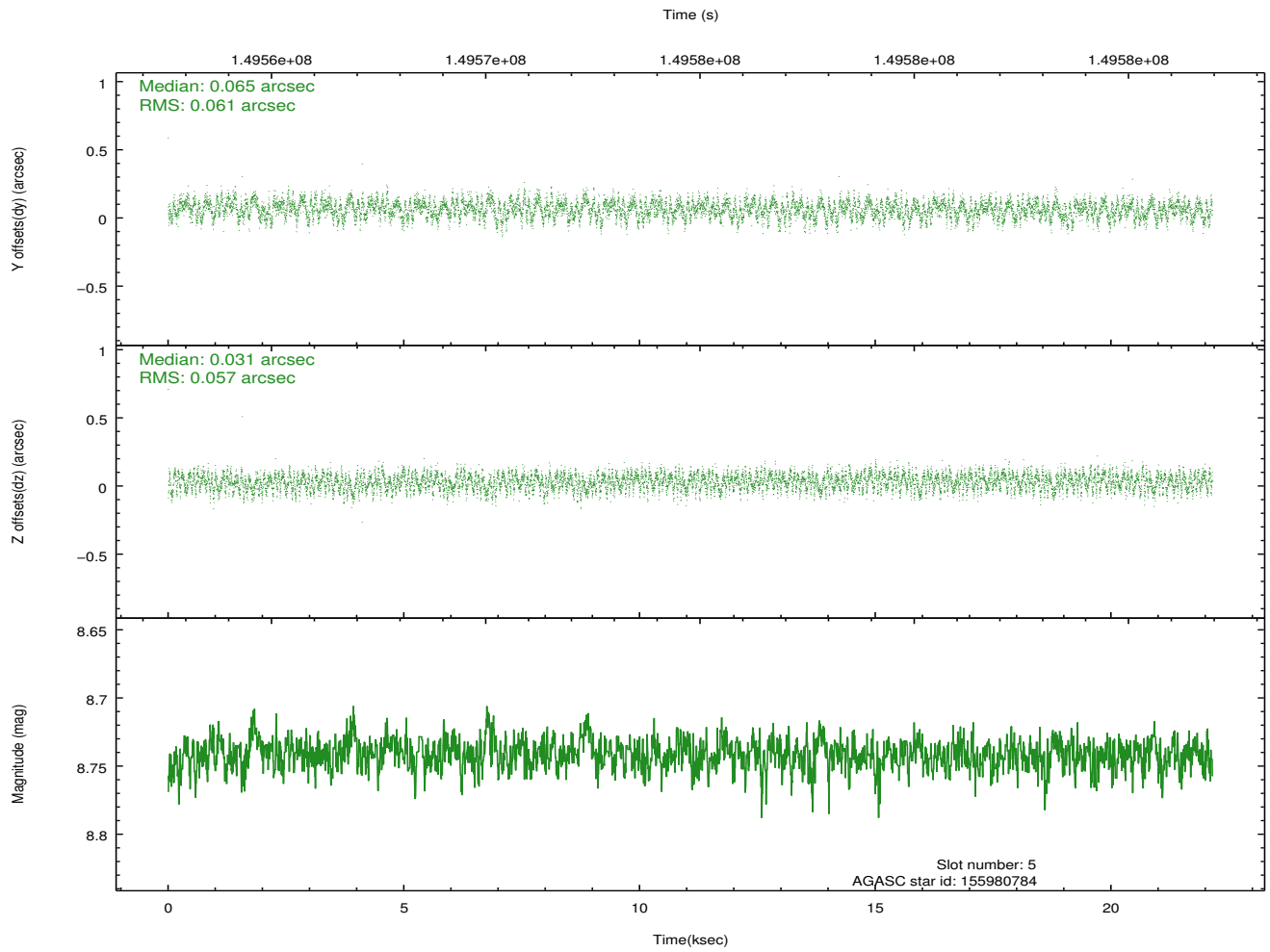
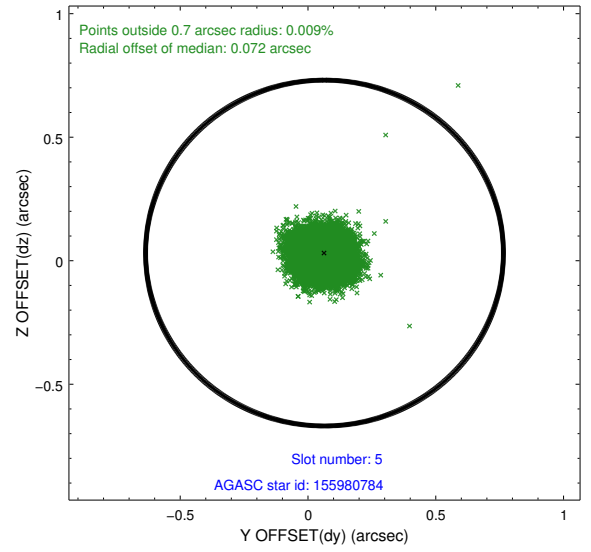
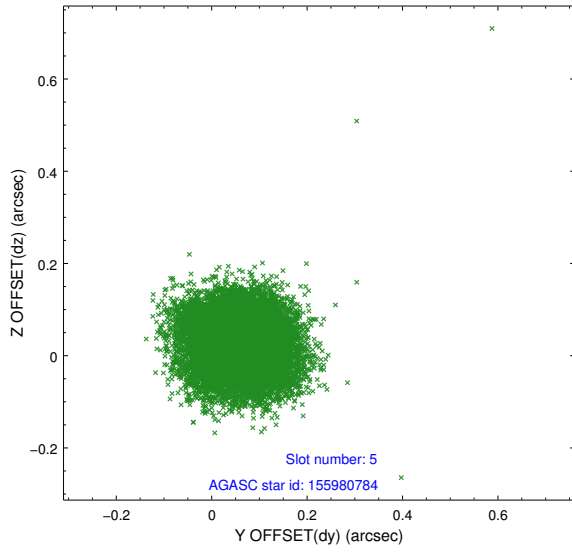
### 2.4.1 Slot 3



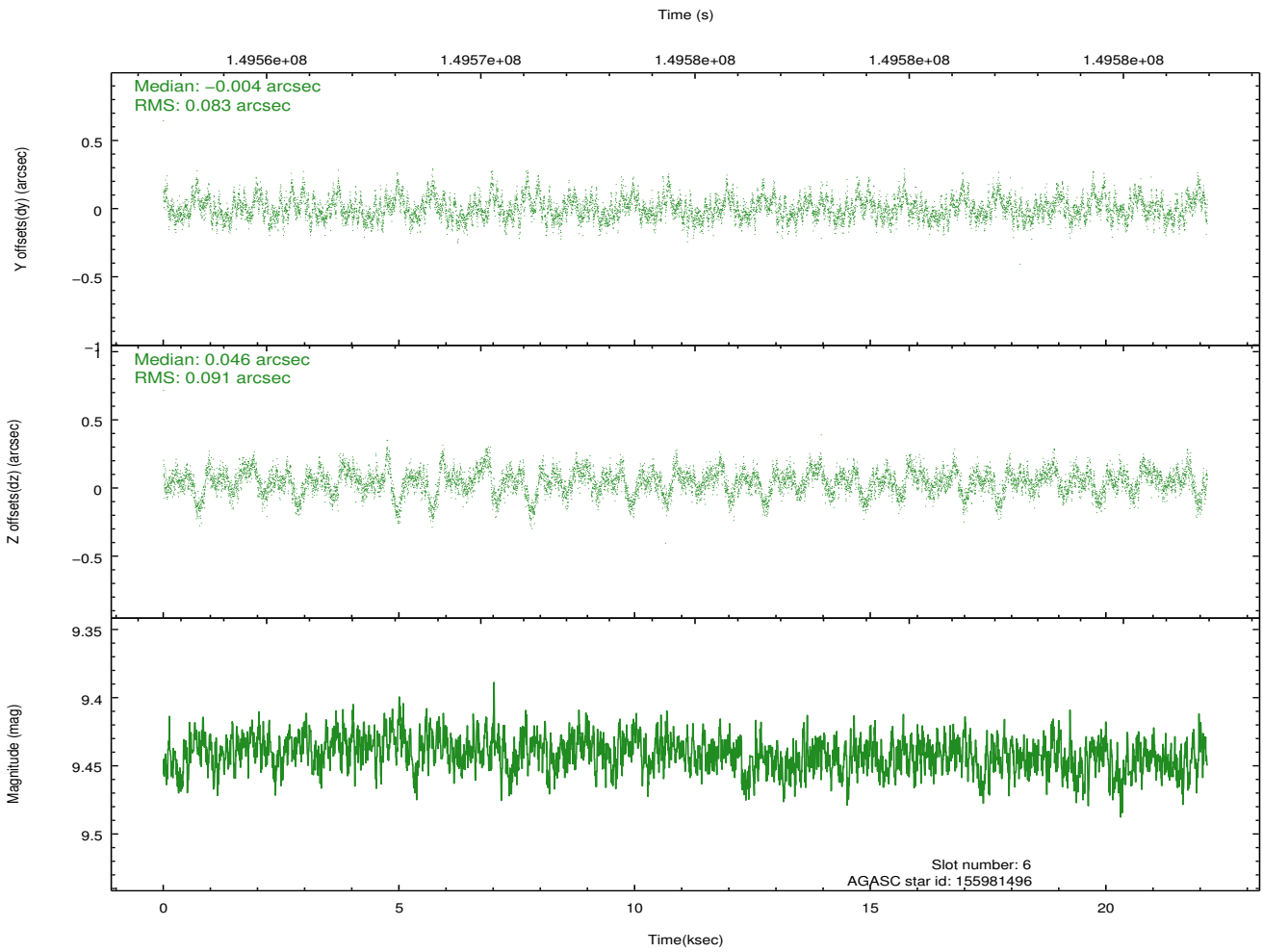
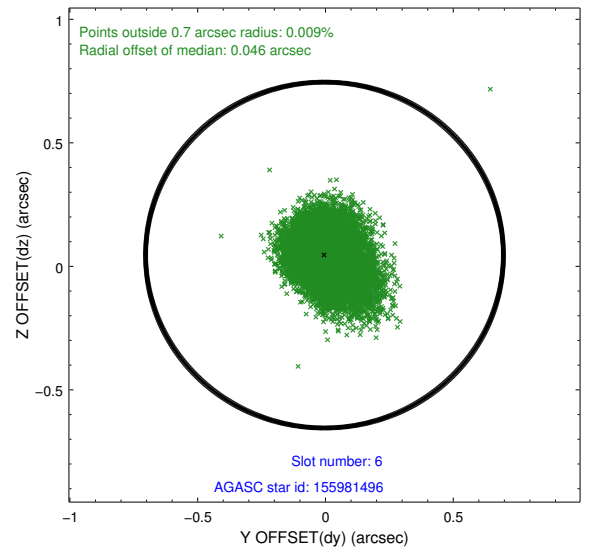
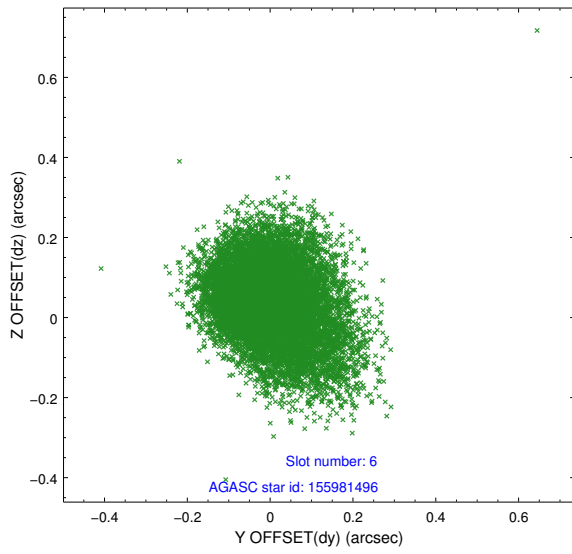
## 2.4.2 Slot 4



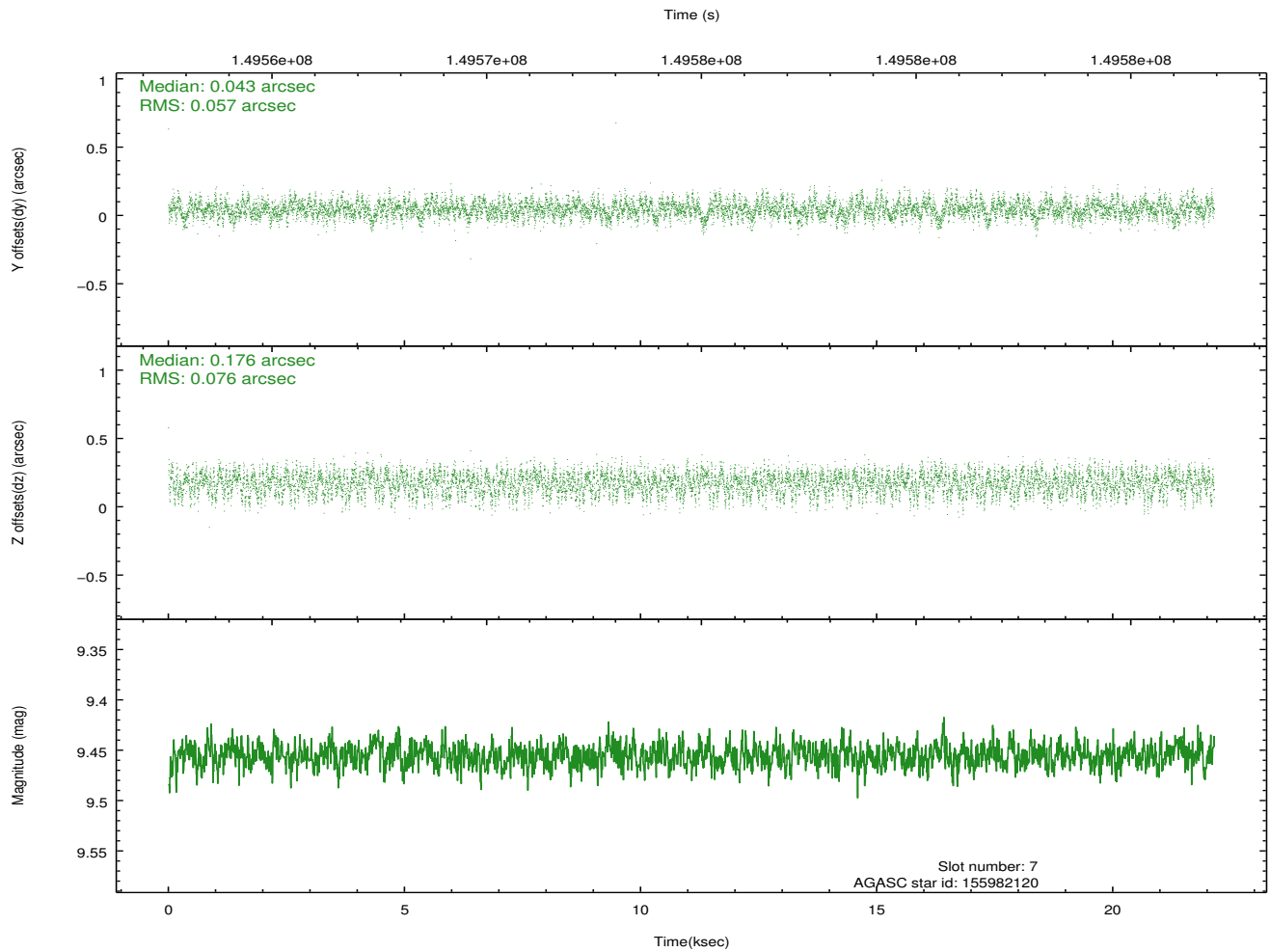
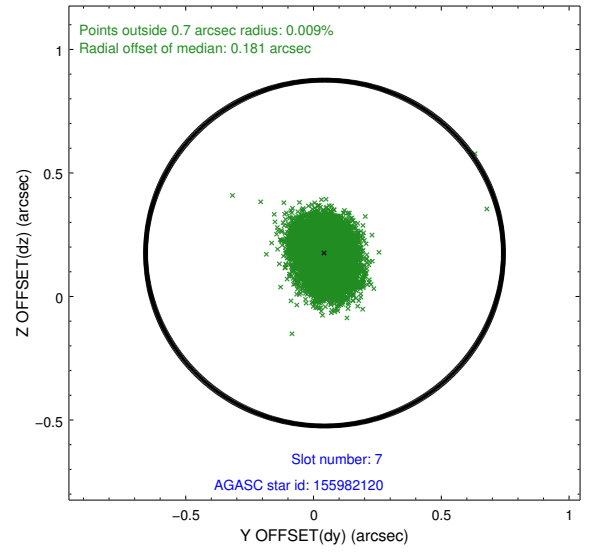
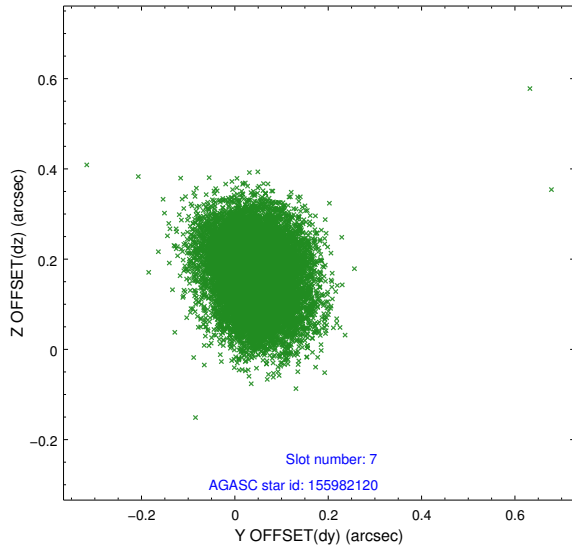
### 2.4.3 Slot 5



## 2.4.4 Slot 6

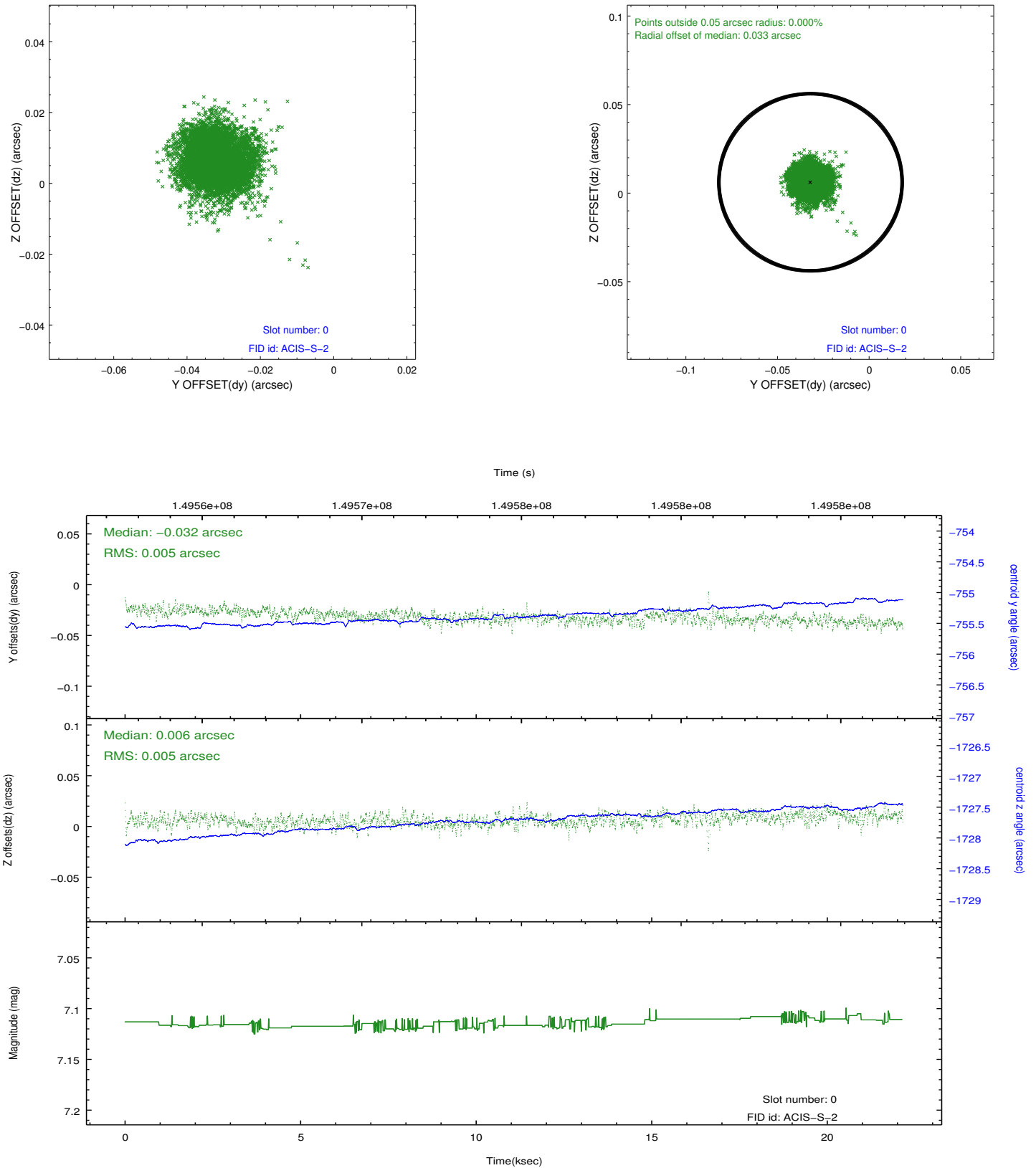


## 2.4.5 Slot 7

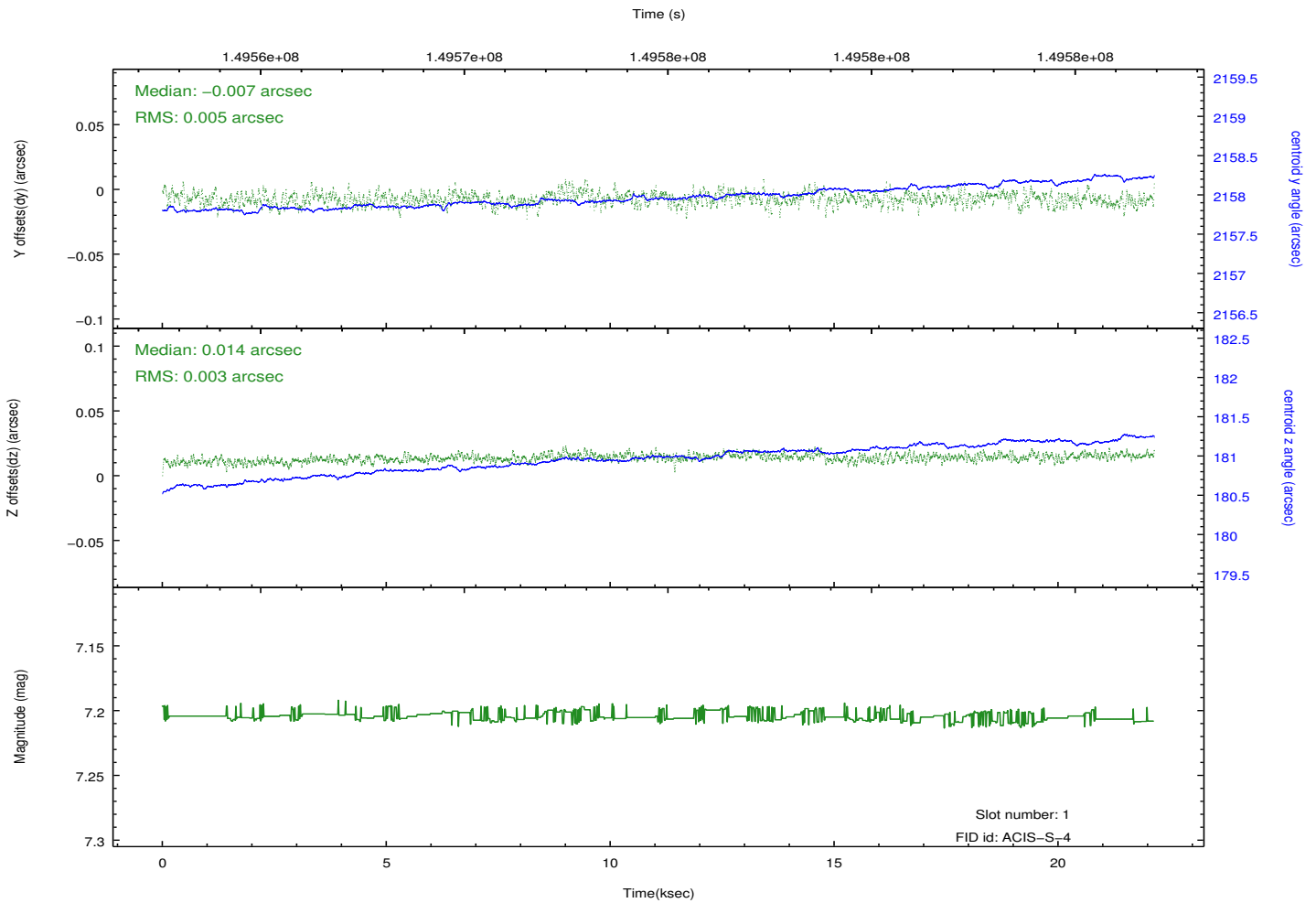
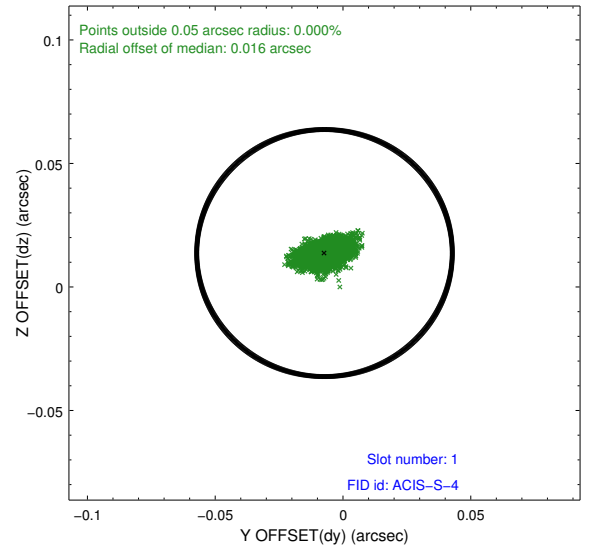
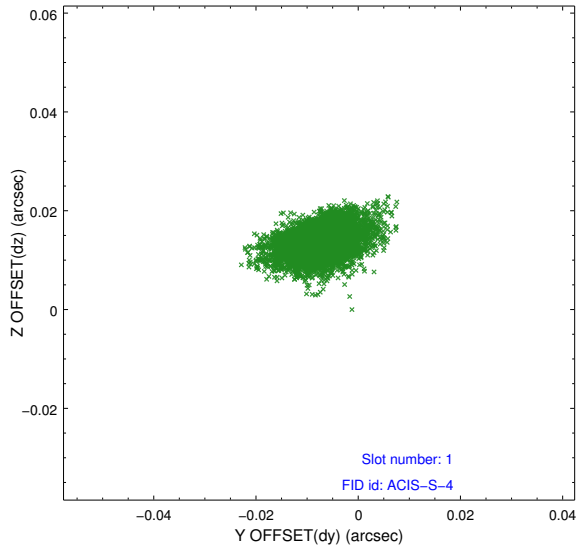


## 2.5 FID Slots

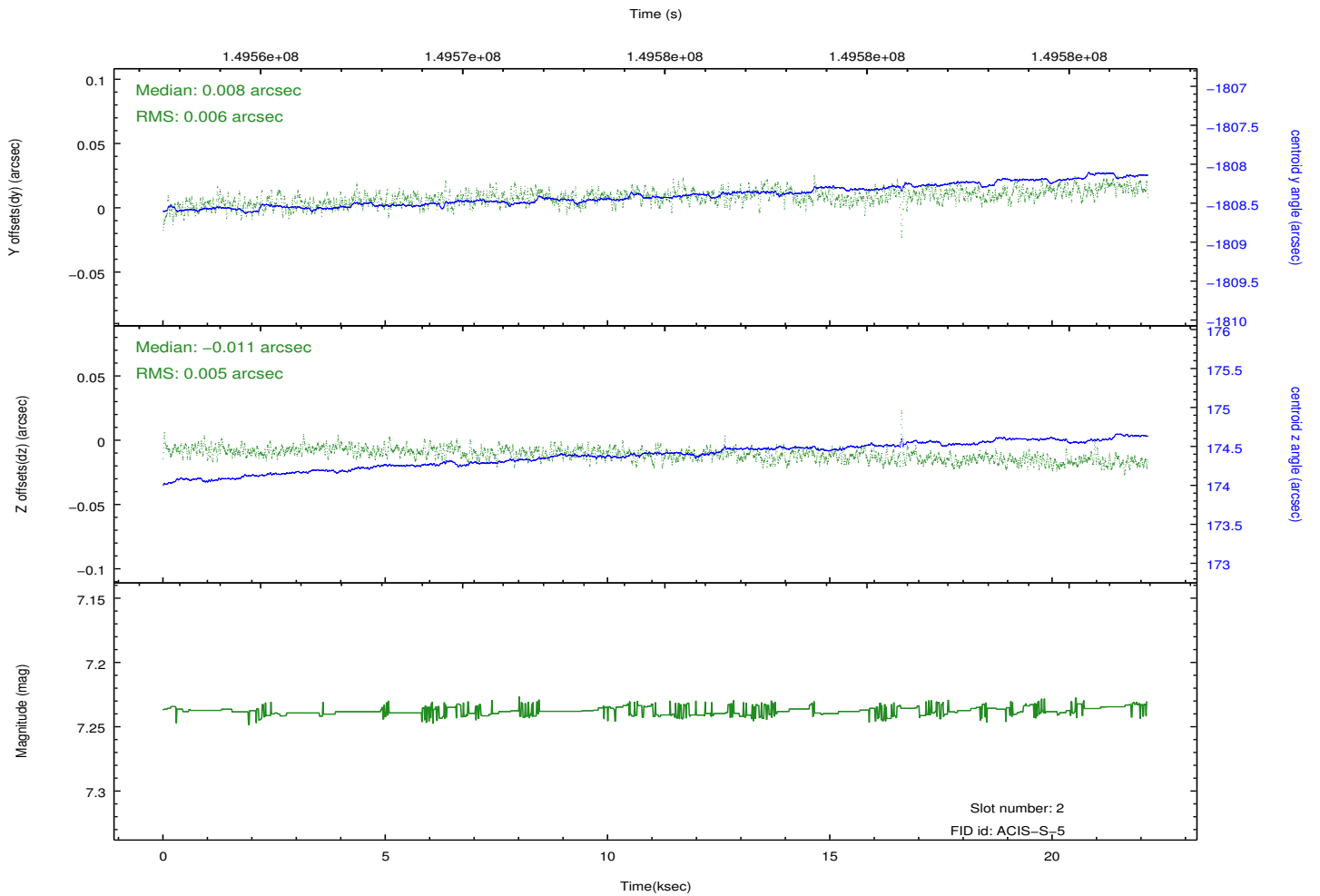
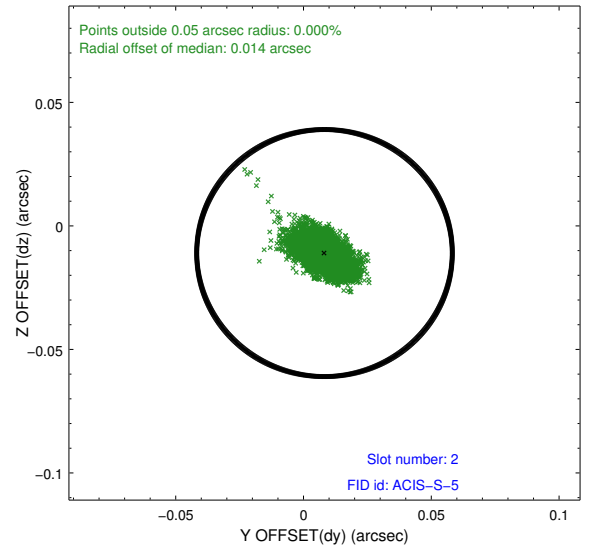
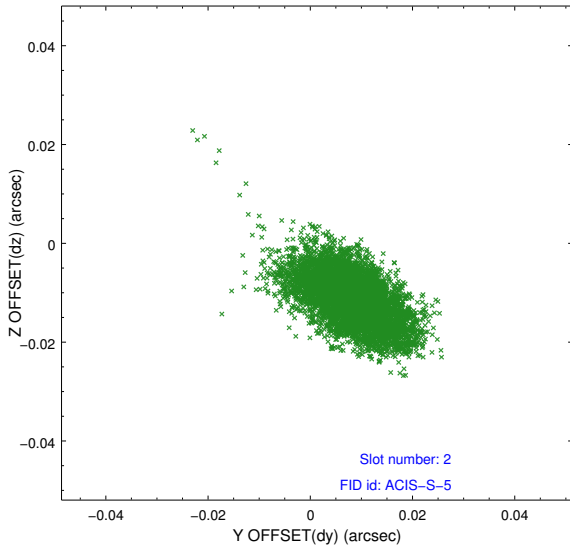
### 2.5.1 Slot 0



## 2.5.2 Slot 1



### 2.5.3 Slot 2



# A Summary

## A.1 Status

V&V Scientist	Beth Sundheim
V&V Date (YYYY-MM-DD)	2012.10.24
V&V Edition	1
V&V Disposition and Status	OK
V&V Charge Time	21.759

## A.2 Comments

Window preference met.