

V&V Reference Report

L2 ASCDS Version : 8.4.5

Observation 2571 - L2 Version 3
Chandra X-Ray Center

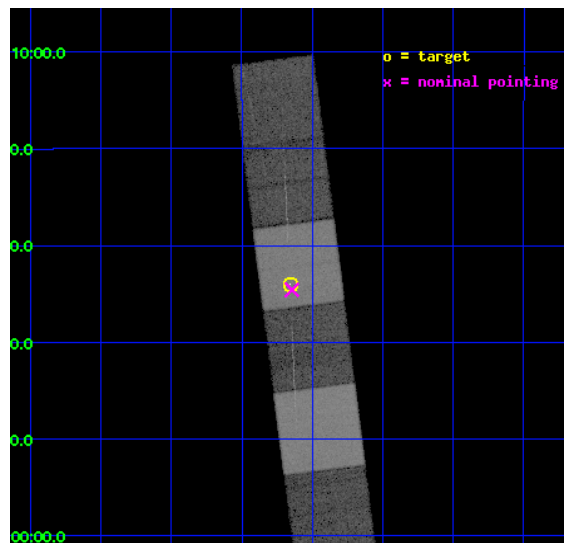
L2 Processing Date : Oct 13 2012

Contents

1	Front	2
2	OBI	3
2.1	OBI	3
2.1.1	Images	3
2.1.2	Bias	3
2.1.3	Parameters	4
2.1.4	Events	4
2.2	Compared Parameters	5
2.3	Aspect	6
2.4	Star Slots	9
2.4.1	Slot 3	9
2.4.2	Slot 4	10
2.4.3	Slot 5	11
2.4.4	Slot 6	12
2.4.5	Slot 7	13
2.5	FID Slots	14
2.5.1	Slot 0	14
2.5.2	Slot 1	15
2.5.3	Slot 2	16
3	Gratings	17
3.1	HEG Arm	17
3.2	MEG Arm	19
A	Summary	21
A.1	Status	21
A.2	Comments	21

1 Front

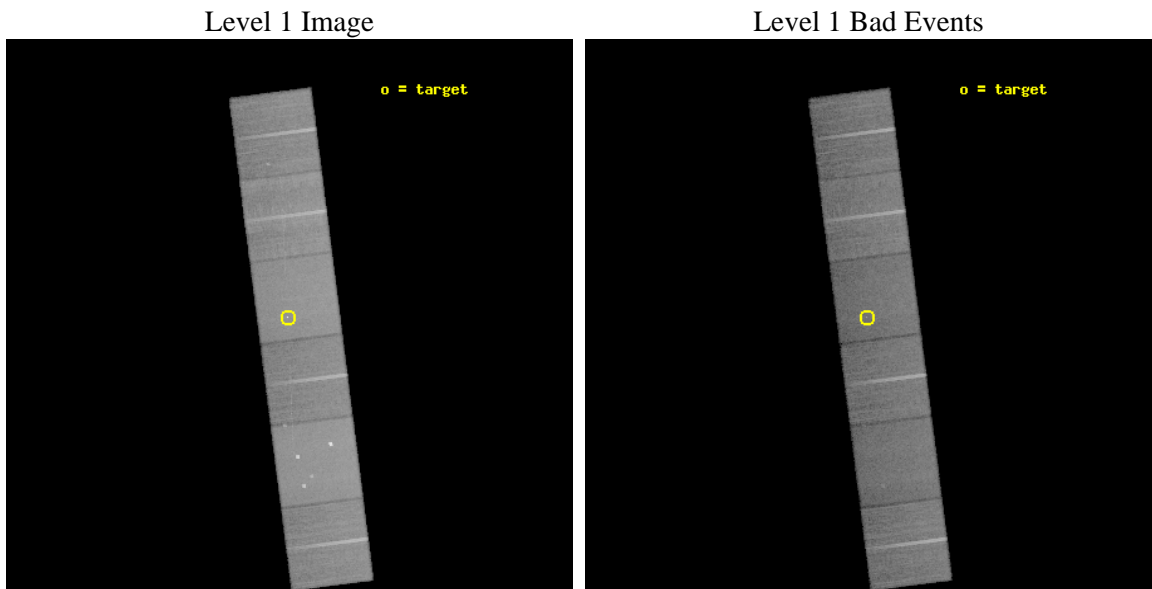
seq_num	200179	Sequence number
obs_id	2571	Observation id
title	CHANDRA HETGS OBSERVATIONS OF THE RAPIDLY ROTATING OE STAR ZETA OPH	
observer	Dr Wayne Waldron	Principal investigator
object	ZETA OPH	Source name
dtcycle	0	
cycle	P	events from which exps? Prim/Second/Both
ra_targ	249.289167	Observer's specified target RA [deg]
dec_targ	-10.567222	Observer's specified target Dec [deg]
ra_nom	249.28620171484	Nominal RA [deg]
dec_nom	-10.576446011316	Nominal Dec [deg]
roll_nom	262.65407803939	Nominal Roll [deg]
revision	3	Processing version of data
ontime	35867.285172909	Sum of GTIs [s]
livetime	35413.112011364	Livetime [s]
ontime4	35867.326212913	Sum of GTIs [s]
ontime5	35867.244132906	Sum of GTIs [s]
ontime6	35867.203092903	Sum of GTIs [s]
ontime7	35867.285172909	Sum of GTIs [s]
ontime8	35867.161933333	Sum of GTIs [s]
ontime9	35867.121012926	Sum of GTIs [s]
l2events	345082	Number of level 2 events



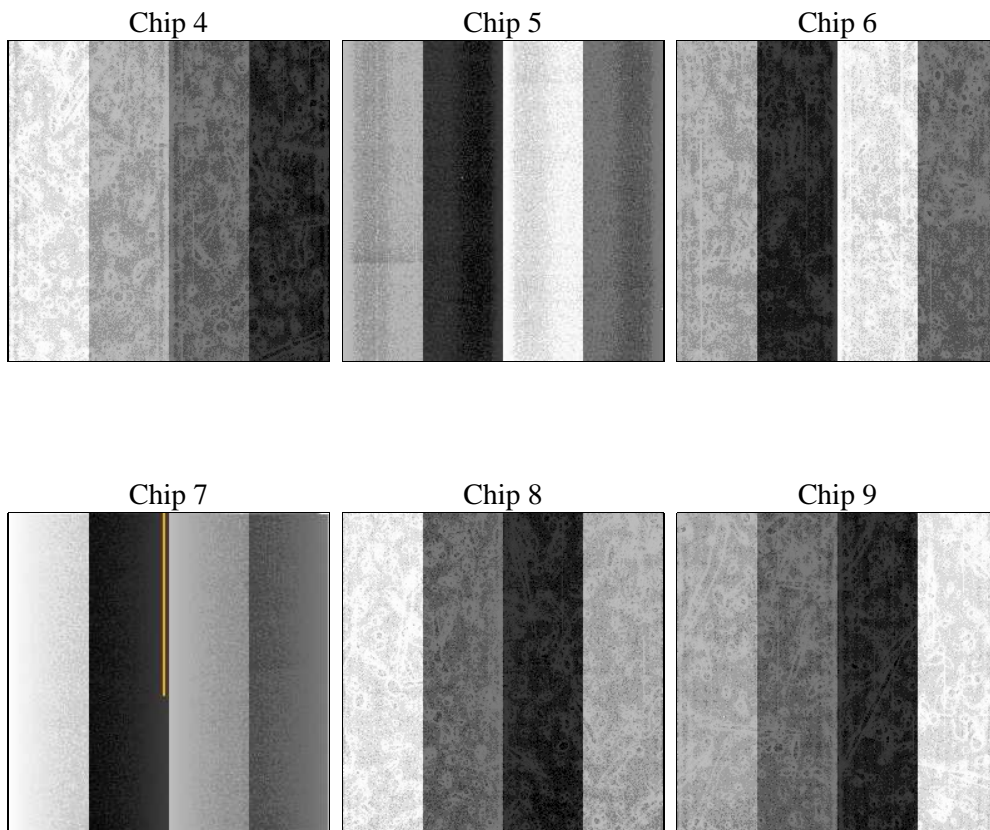
2 OBI

2.1 OBI

2.1.1 Images



2.1.2 Bias



2.1.3 Parameters

obi_num	0	Obi number	sched_exp_time	36111.579000	[s] Scheduled observation exposure time
ascdsver	8.4.5	Processing system revision	ontime	35867.285172909	Sum of GTIs [s]
caldbver	4.5.2	 	ontime4	35867.326212913	Sum of GTIs [s]
date	2012-10-13T06:12:20	Date and time of file creation	ontime5	35867.244132906	Sum of GTIs [s]
revision	3	Processing version of data	ontime6	35867.203092903	Sum of GTIs [s]
			ontime7	35867.285172909	Sum of GTIs [s]
			ontime8	35867.161933333	Sum of GTIs [s]
			ontime9	35867.121012926	Sum of GTIs [s]
			l1events	1581404	Number of level 1 events

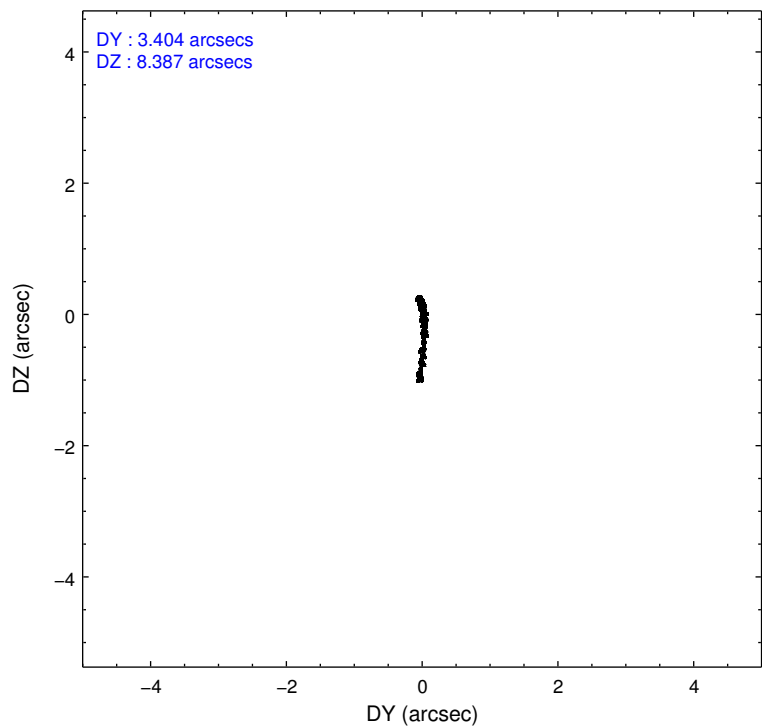
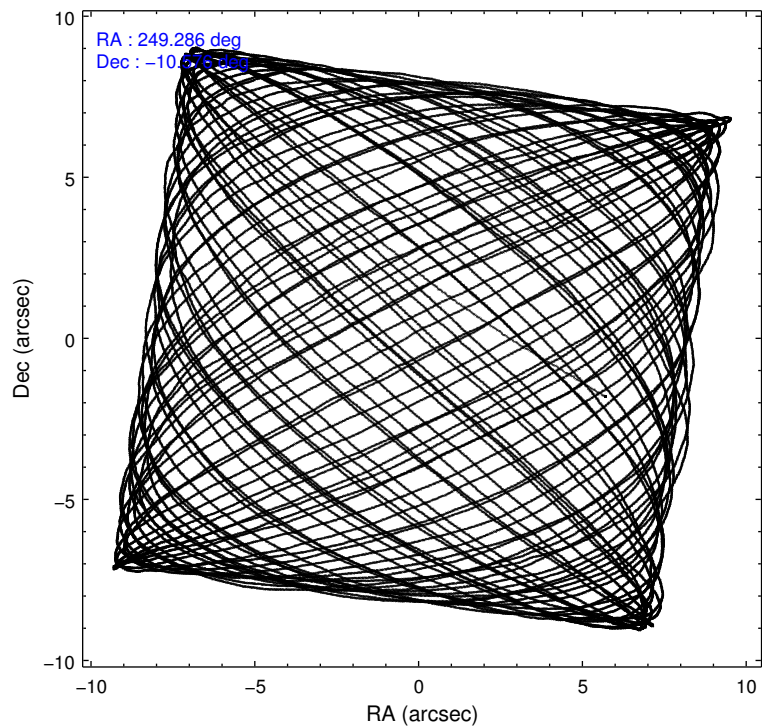
2.1.4 Events

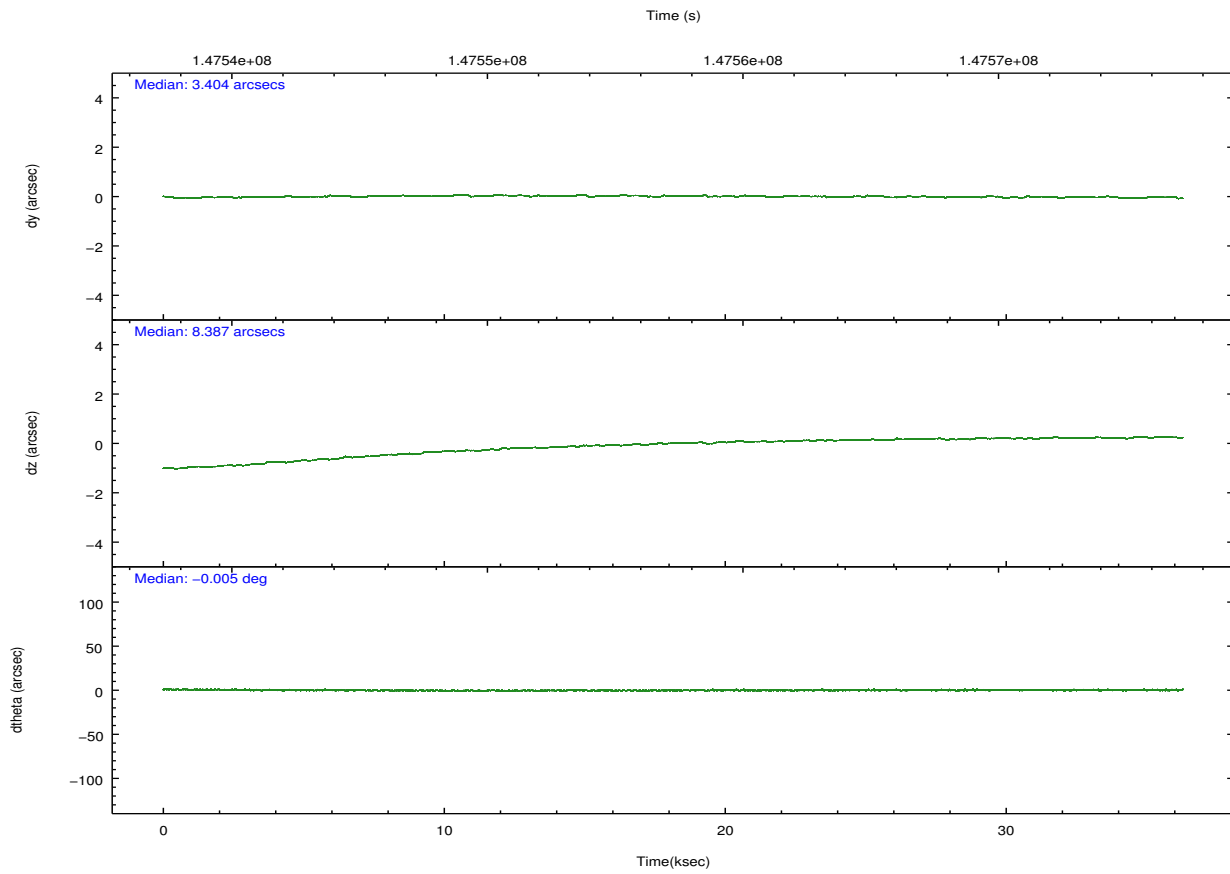
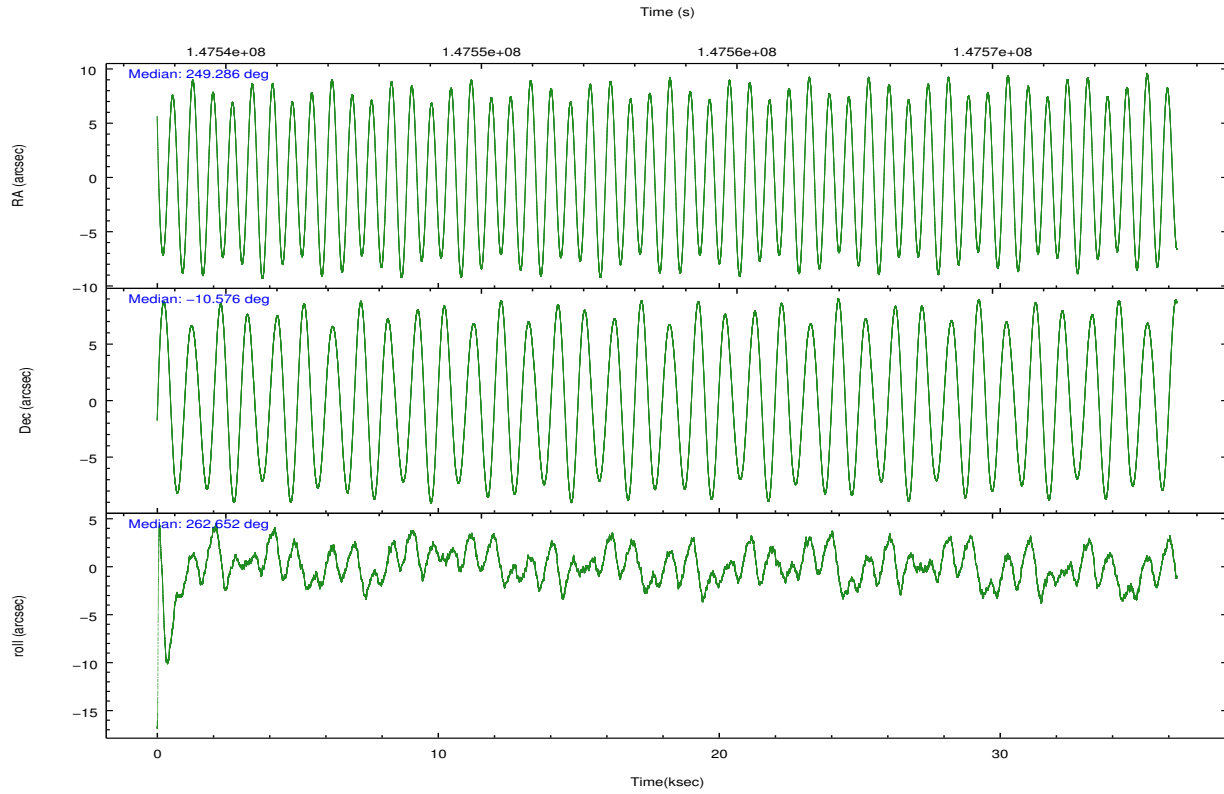
	ccd 4	ccd 5	ccd 6	ccd 7	ccd 8	ccd 9		ccd 4	ccd 5	ccd 6	ccd 7	ccd 8	ccd 9
level 1 events	242354	326720	223740	290167	279146	219277	grade 0 events	11760	24785	10870	11220	18712	11405
rejected events	215458	172726	197580	169181	221930	192576		4%	7%	4%	3%	6%	5%
rejected %	88%	52%	88%	58%	79%	87%	grade 1 events	199	674	106	290	186	119
								0%	0%	0%	0%	0%	0%
							grade 2 events	5627	41519	5186	23764	12047	5026
								2%	12%	2%	8%	4%	2%
							grade 3 events	2809	6142	2410	11037	6219	2625
								1%	1%	1%	3%	2%	1%
							grade 4 events	2646	5879	2545	11165	5844	2614
								1%	1%	1%	3%	2%	1%
							grade 5 events	9145	24149	9795	27716	12540	10415
								3%	7%	4%	9%	4%	4%
							grade 6 events	4056	75681	5151	63819	14396	5033
								1%	23%	2%	21%	5%	2%
							grade 7 events	206112	147891	187677	141156	209202	182040
								85%	45%	83%	48%	74%	83%

2.2 Compared Parameters

Parameter	Planned	Actual	Parameter	Planned	Actual
Instrument	ACIS	ACIS	Obspar format version number	7	7
Detector	ACIS-456789	ACIS-456789	Obspar file type	PREDICTED	ACTUAL
Grating	HETG	HETG	Obspar update status	NONE	UPDATED
Data mode	FAINT	FAINT	Number of optional ACIS chips dropped	0	0
Observation mode	POINTING	POINTING	On-chip summing requested	N	N
[deg] Pointing RA	249.275207	249.2862017148381	Subarray requested	NONE	NONE
[deg] Pointing Dec	-10.551465	-10.57644601131578	Alternating exposures requested	N	N
[deg] Pointing Roll	262.495443	262.6540780393944	[s] Primary exposure time	0.000000	3.2
[mm] SIM focus pos	-0.684267	-0.6828225247311905			
[mm] SIM defocus	0	0.001444936568705701			
[mm] SIM translation stage pos	-187.132523	-187.1254020033014			
[mm] SIM translation stage offset	-3	-3.007120579706367			
[s] Observation start time (MET)	147539299.184000	147538492.56727			
Observation start date	2002-09-04T15:07:15	2002-09-04T14:54:52			
[s] Observation end time (MET)	147575410.184000	147575725.1813			
Observation end date	2002-09-05T01:09:06	2002-09-05T01:15:25			
Read mode	TIMED	TIMED			

2.3 Aspect



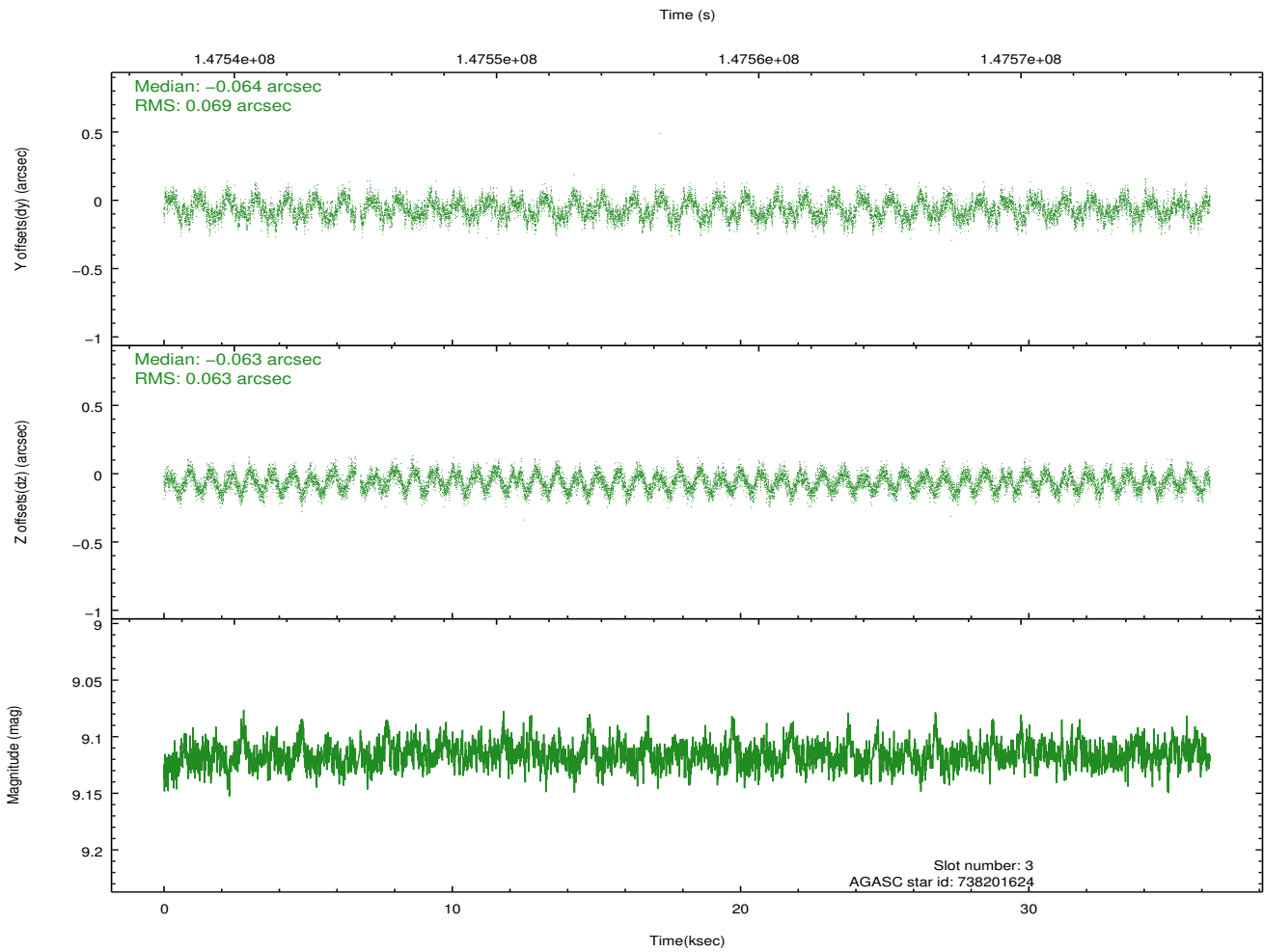
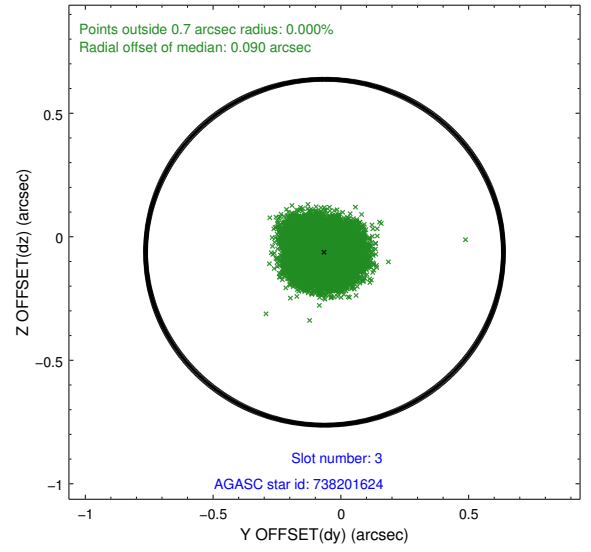
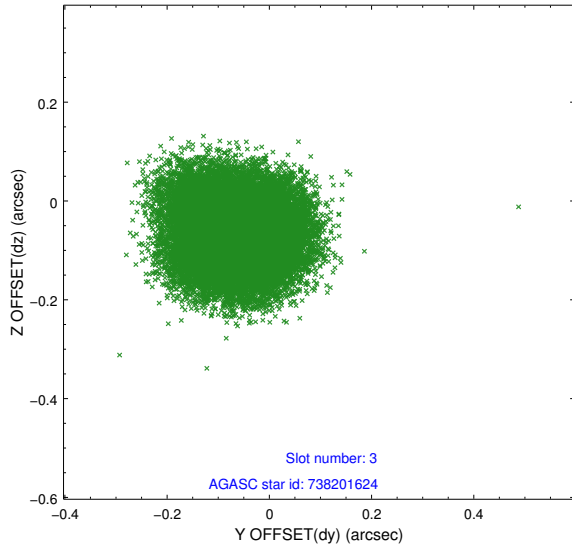


Slot Statistics

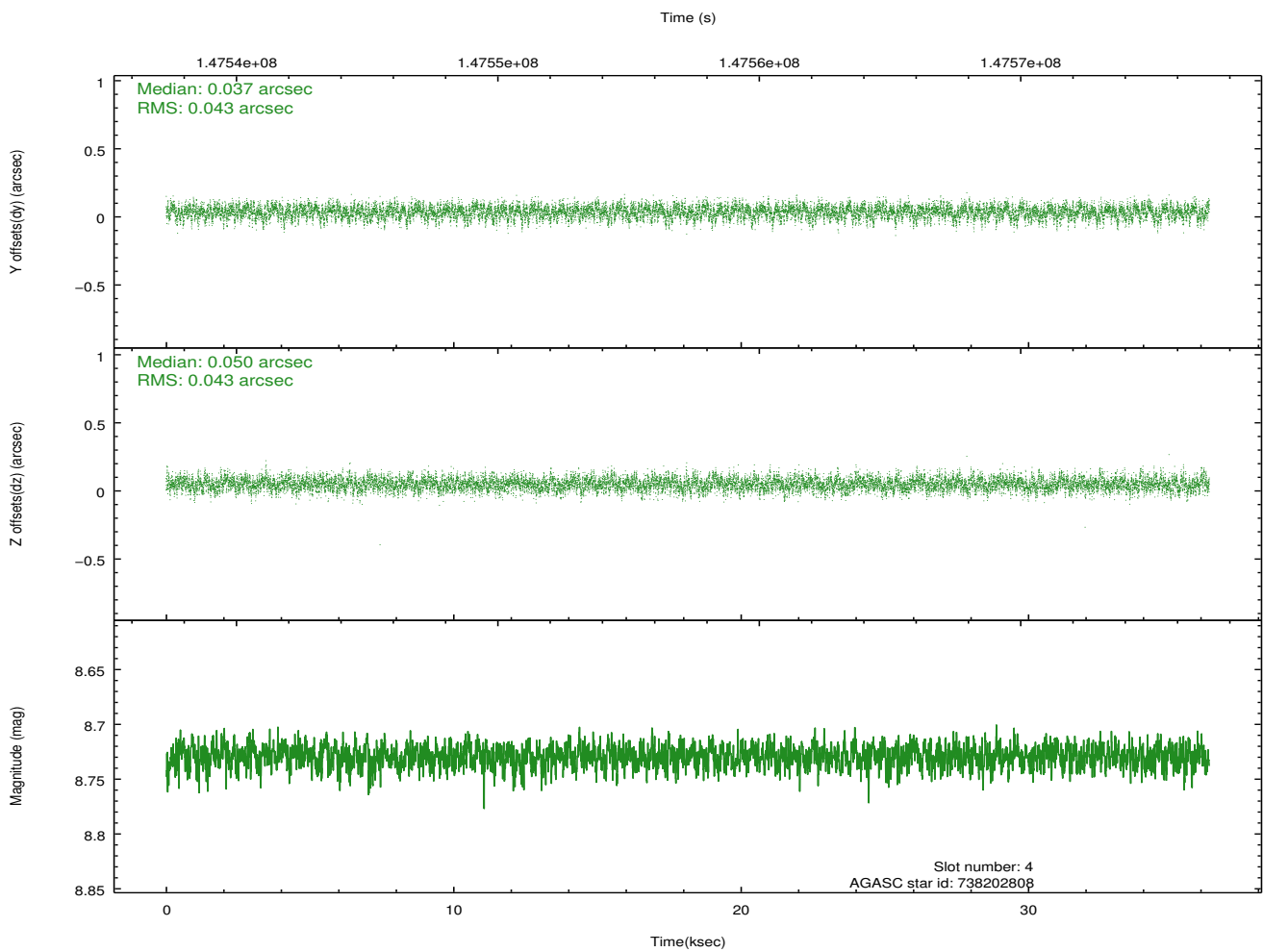
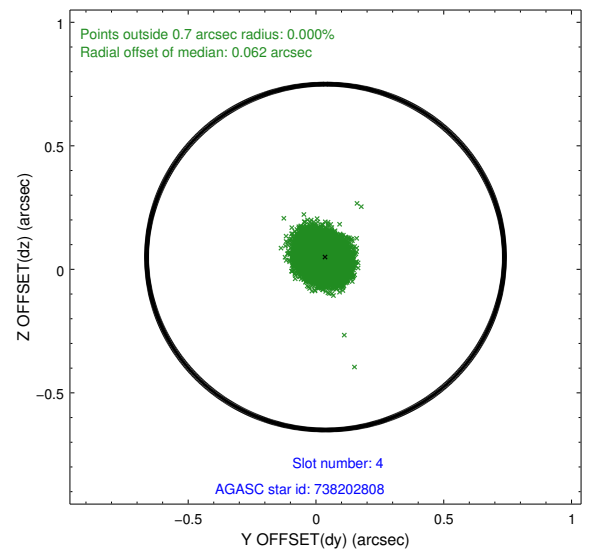
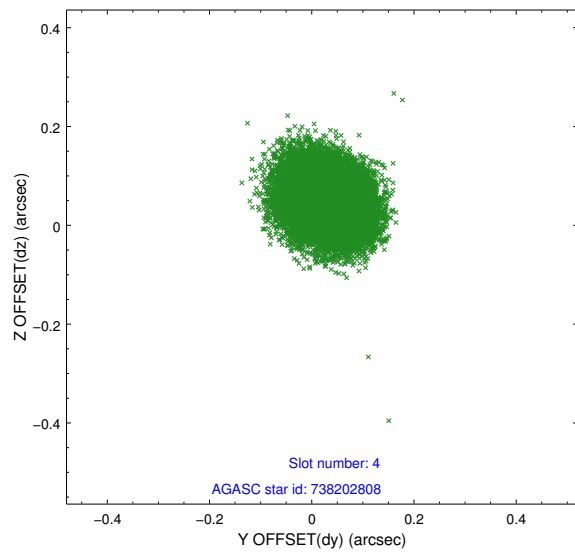
slot	status	id	mag	n_pts	med_dy	med_dz	dr1	dr2	ra	dec	mean_y	mean_z
0	FID	ACIS-S-2	7.10	8852	-0.060	-0.030	0.008	0.014	0.000000	0.000000	-755.87	-1791.57
1	FID	ACIS-S-4	7.20	8853	0.045	0.037	0.006	0.011	0.000000	0.000000	2157.45	116.99
2	FID	ACIS-S-5	7.23	8853	-0.016	0.002	0.007	0.012	0.000000	0.000000	-1808.67	110.59
3	GUIDE	738201624	9.12	17631	-0.064	-0.063	0.103	0.153	249.568343	-10.190982	-1420.79	860.58
4	GUIDE	738202808	8.73	17695	0.037	0.050	0.065	0.106	249.656095	-10.848137	884.81	1475.27
5	GUIDE	738205328	9.26	17694	0.145	-0.057	0.087	0.140	249.444382	-11.182115	2174.25	889.38
6	GUIDE	738203736	7.57	17706	-0.137	0.037	0.054	0.087	249.746198	-10.264513	-1239.79	1519.73
7	GUIDE	738202792	9.88	17679	0.017	0.029	0.110	0.182	249.110436	-10.037946	-1755.39	-820.08

2.4 Star Slots

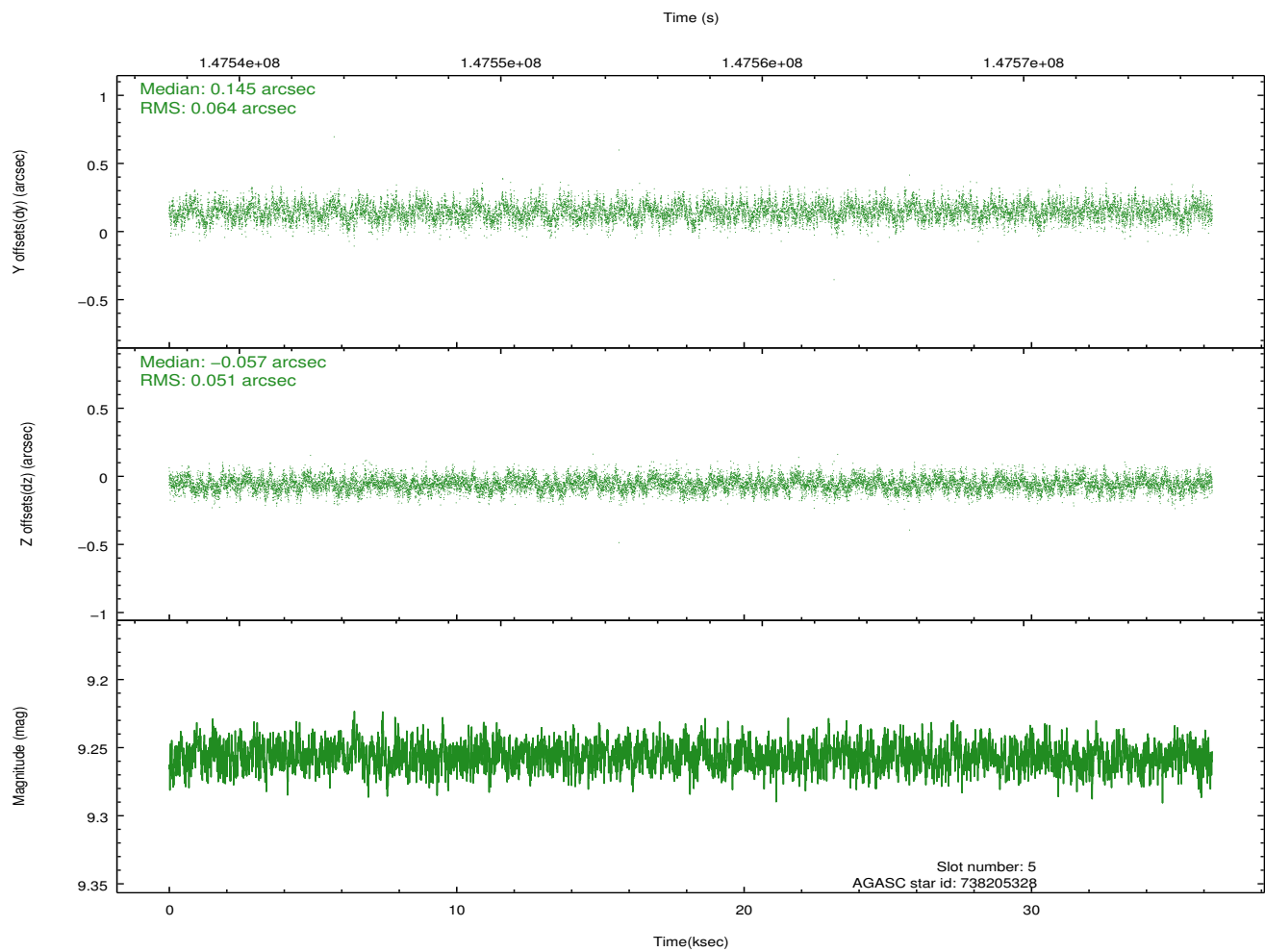
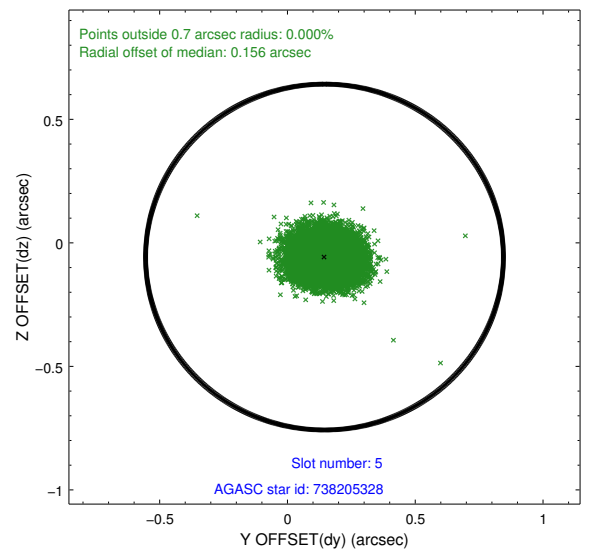
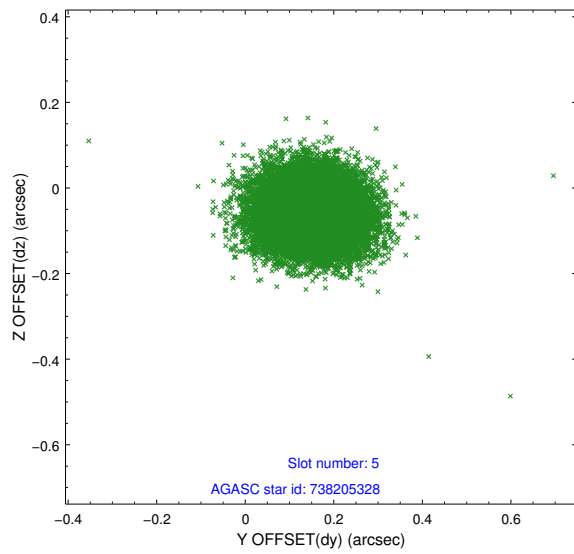
2.4.1 Slot 3



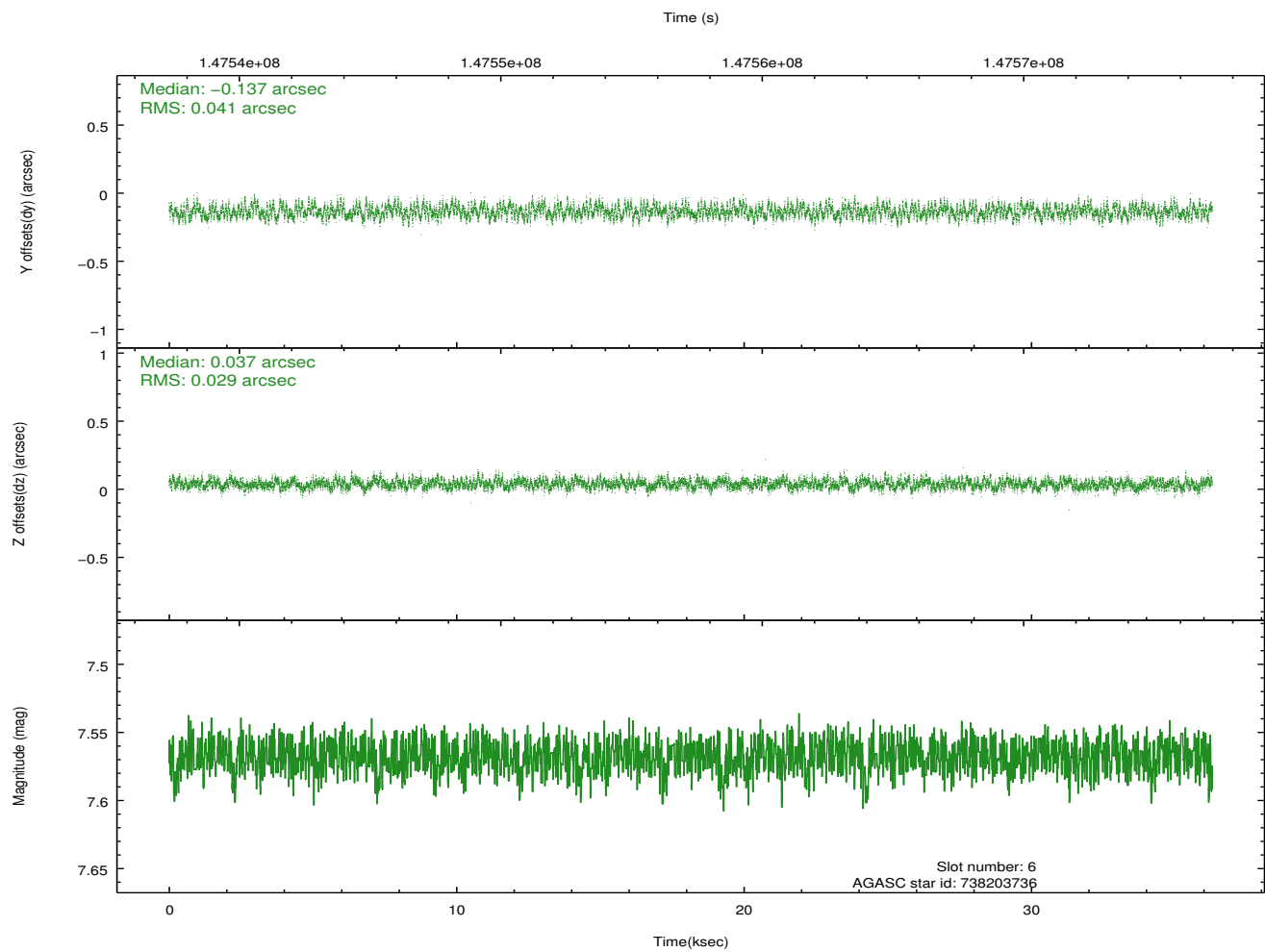
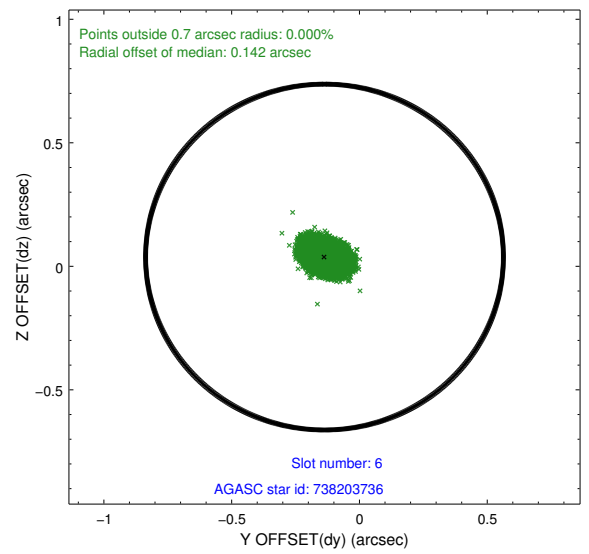
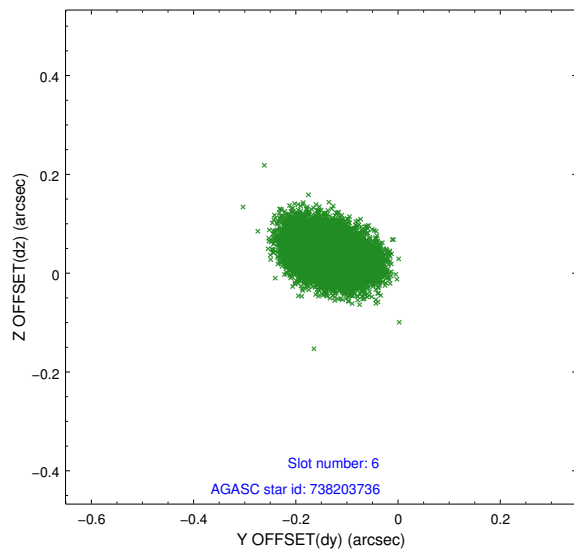
2.4.2 Slot 4



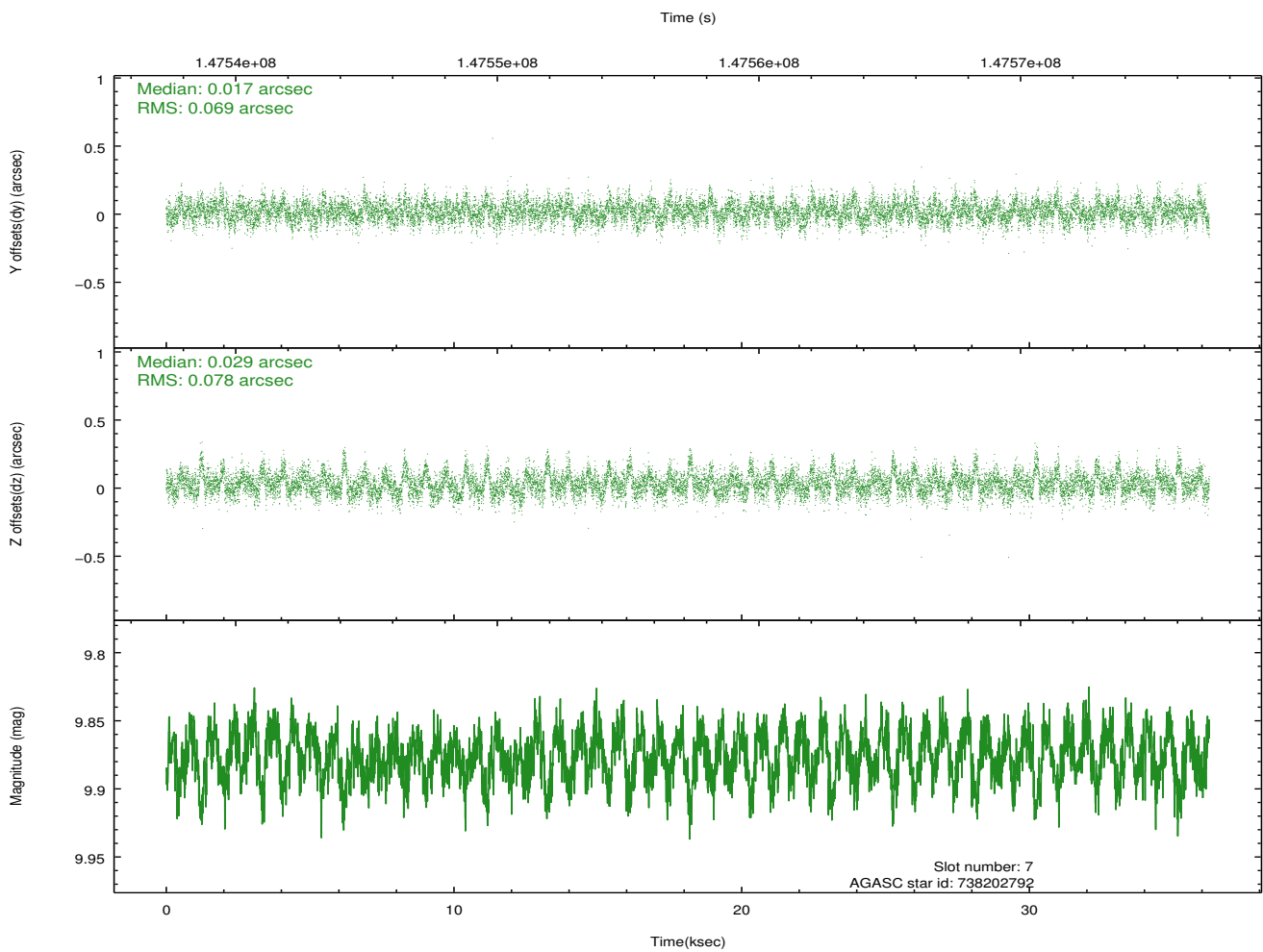
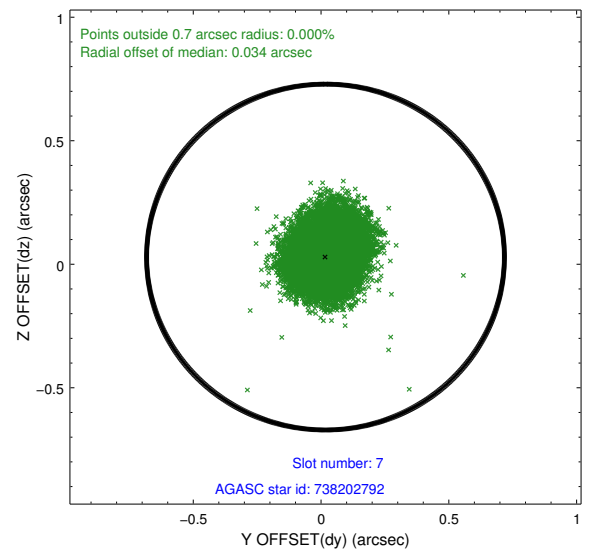
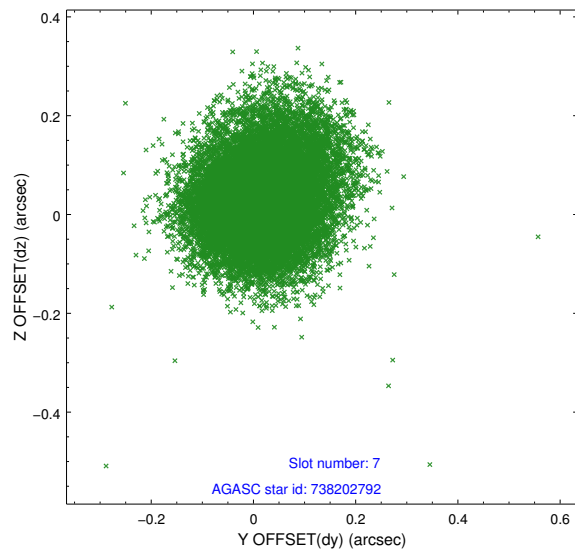
2.4.3 Slot 5



2.4.4 Slot 6

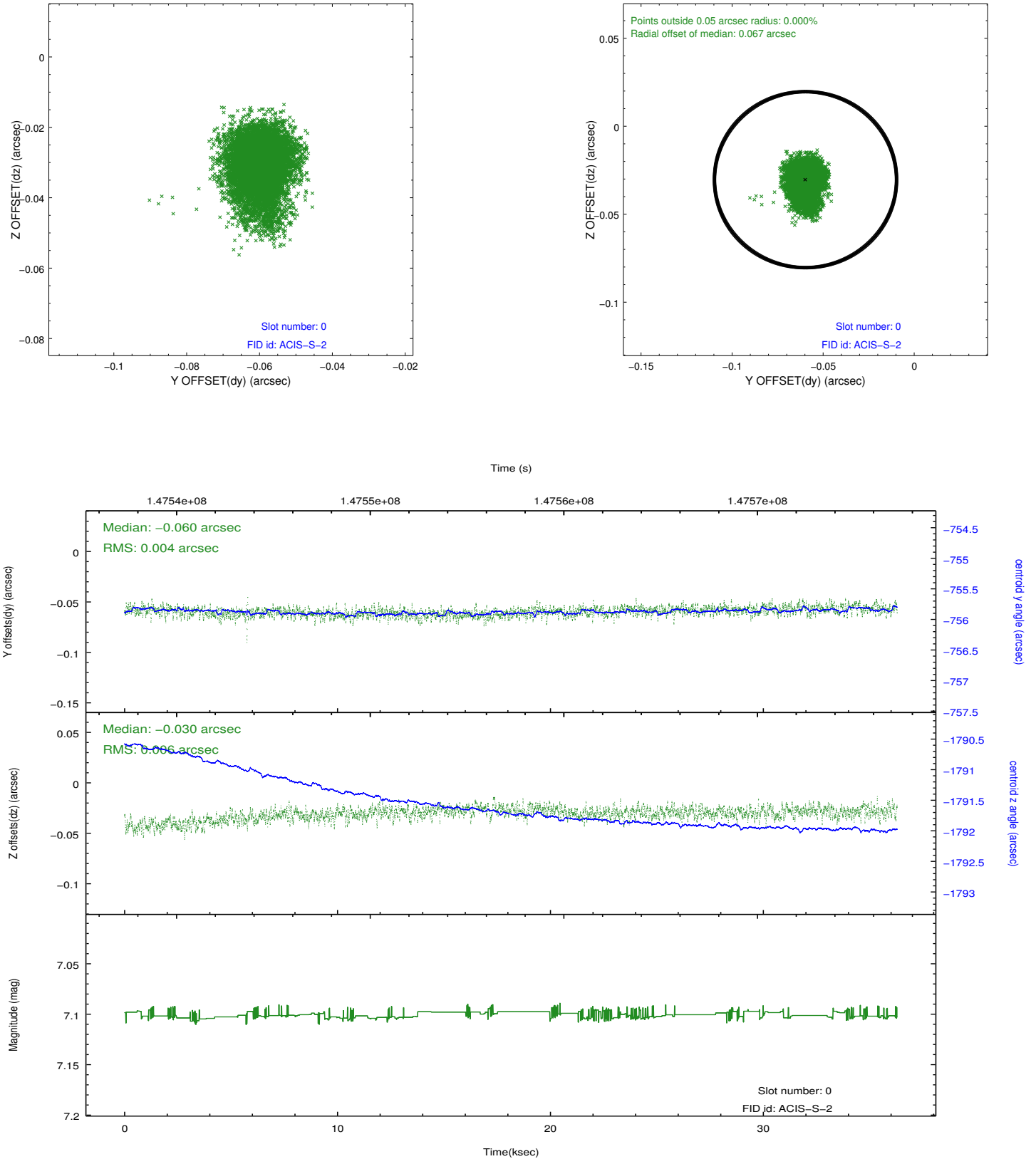


2.4.5 Slot 7

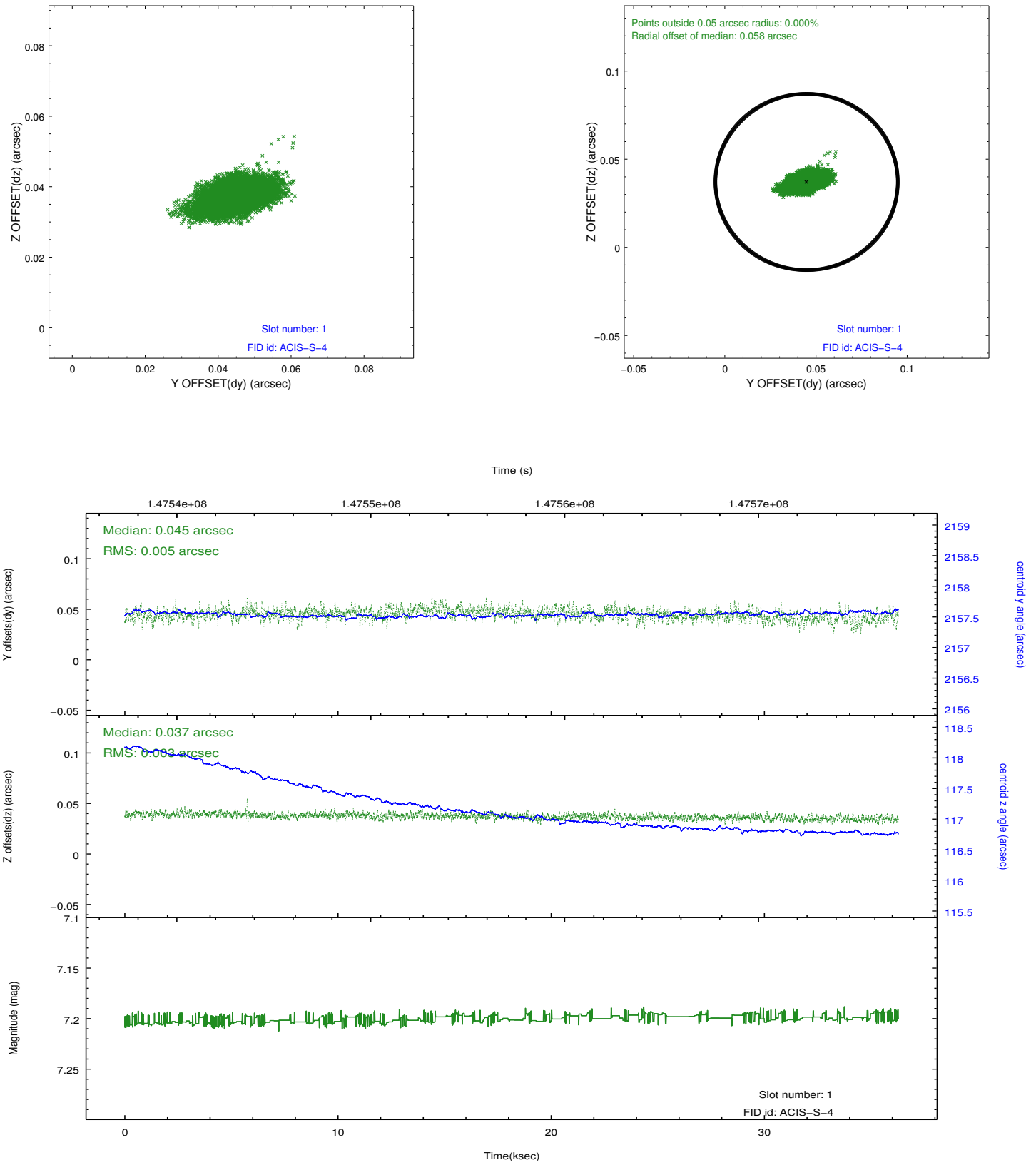


2.5 FID Slots

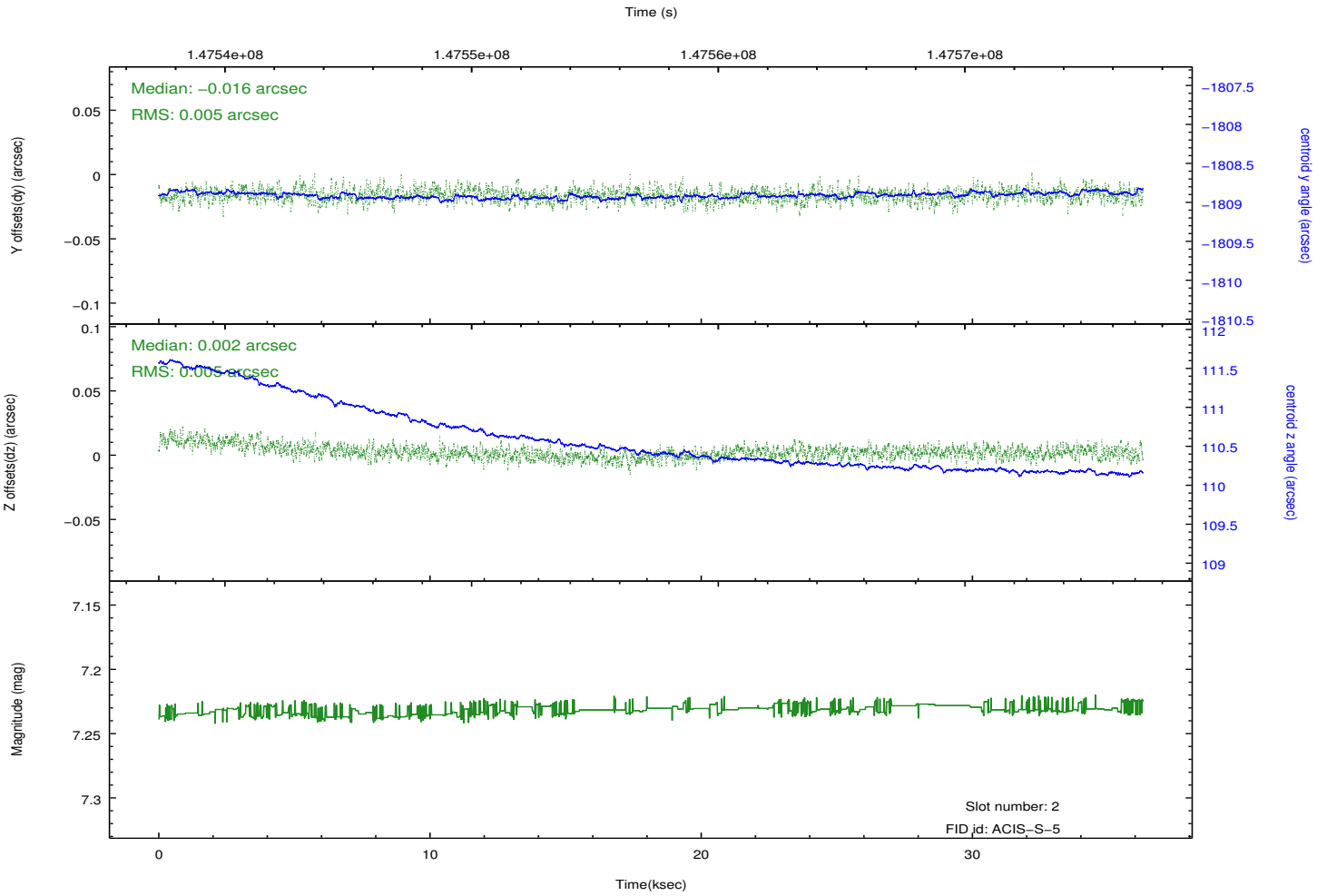
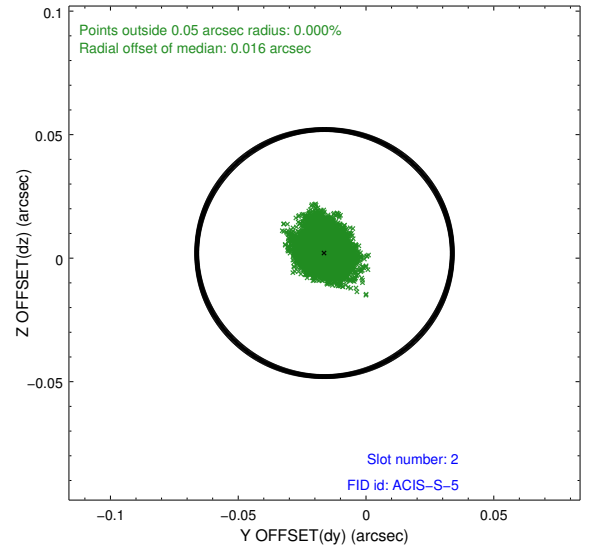
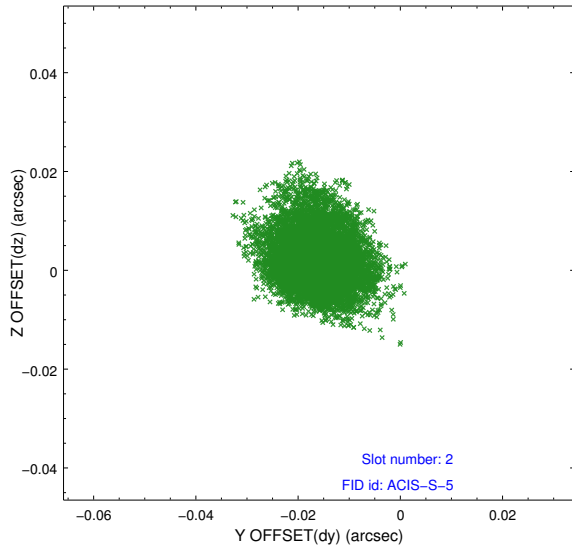
2.5.1 Slot 0



2.5.2 Slot 1



2.5.3 Slot 2

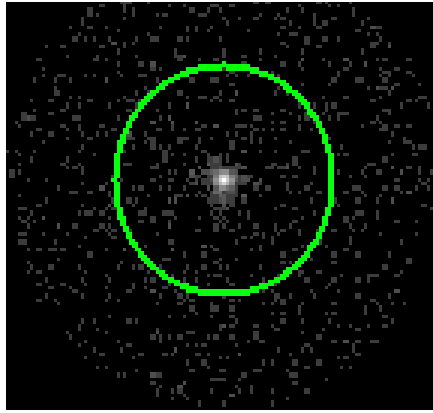


3 Gratings

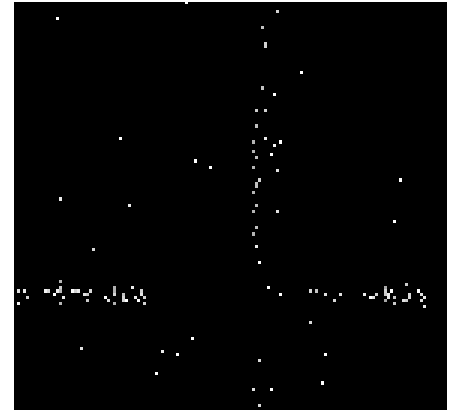
3.1 HEG Arm



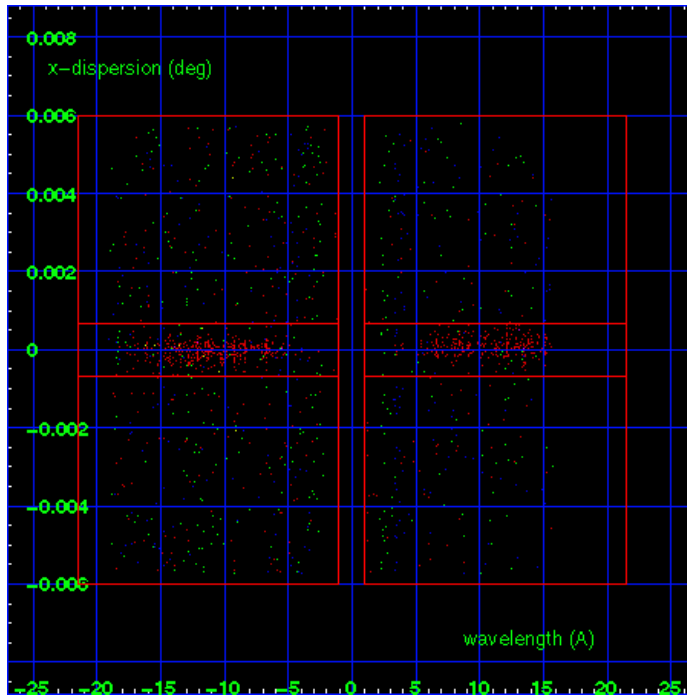
HEG Order Sort 123



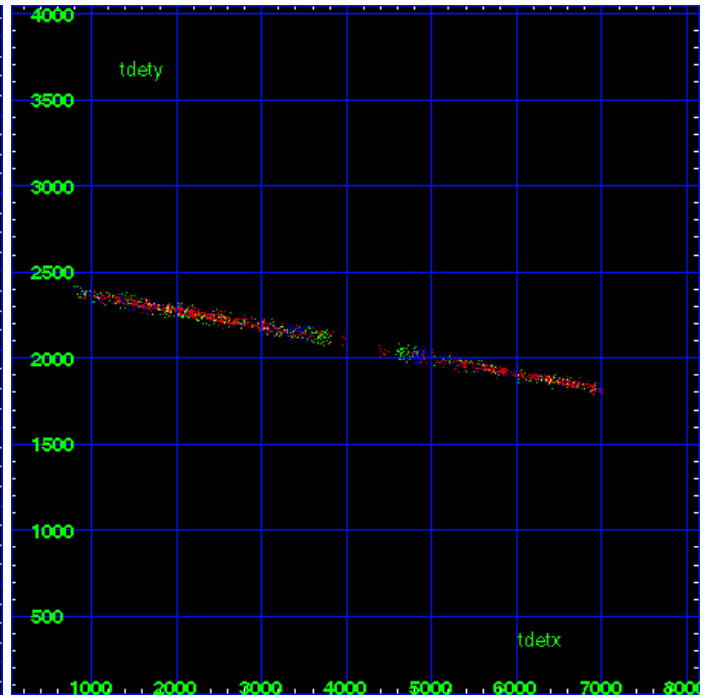
HEG Zero Order



HEG Order Sort ALL

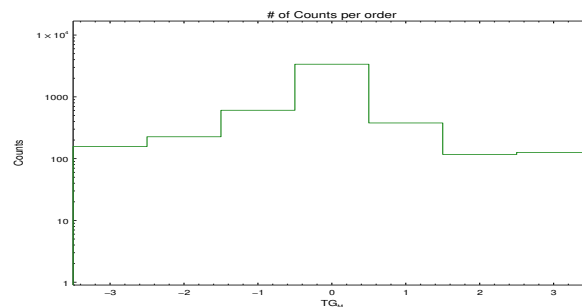


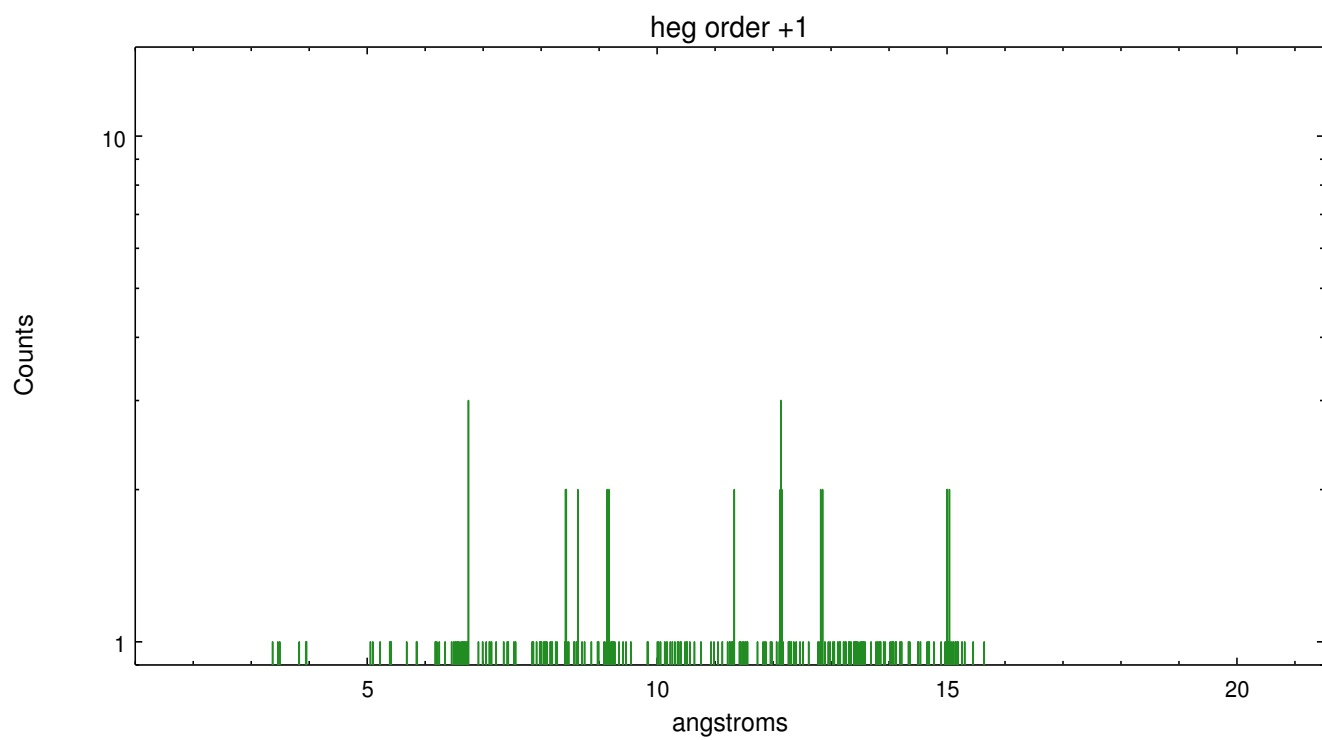
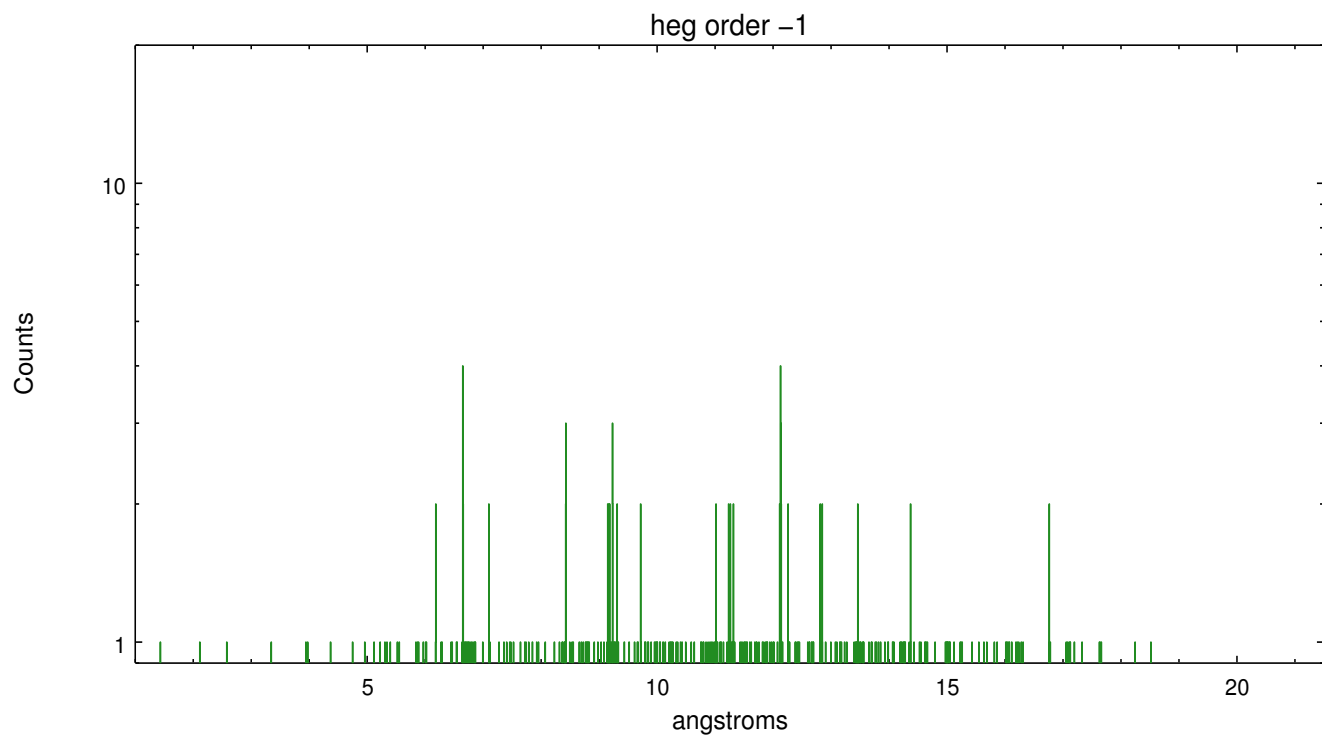
Spot Image HEG



Full Detector HEG

	order -3	order -2	order -1	order 0	order 1	order 2	order 3
Events	157	226	606	3371	378	117	126

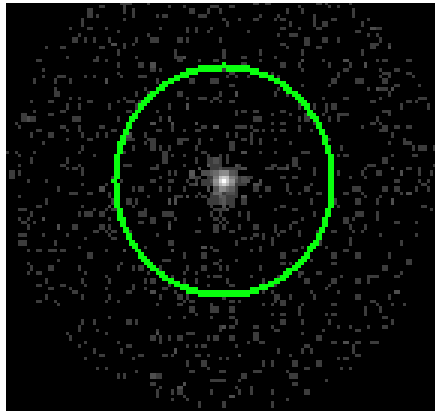




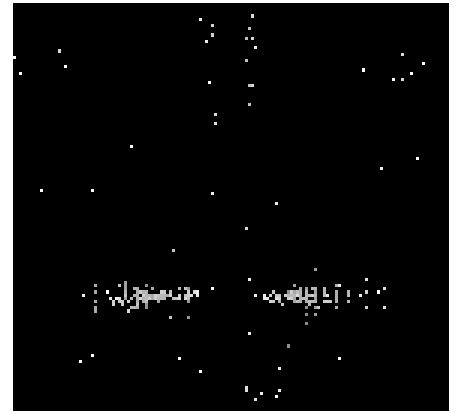
3.2 MEG Arm



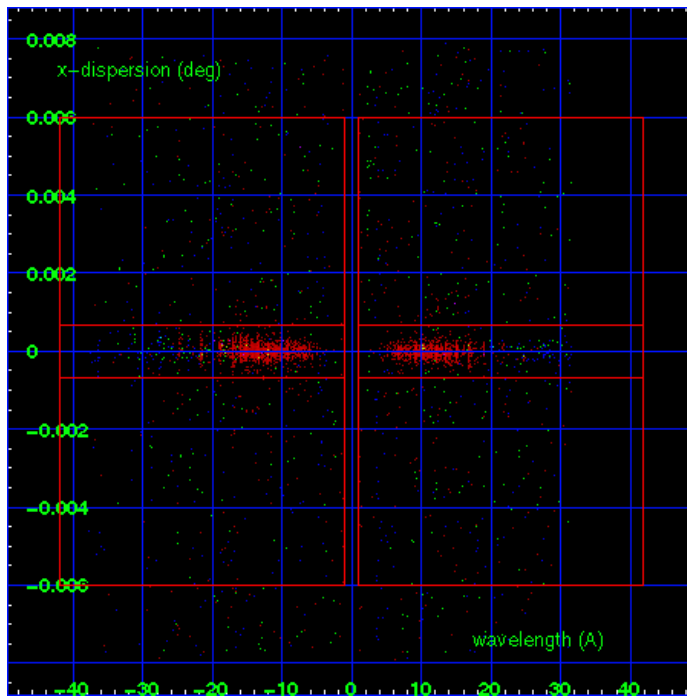
MEG Order Sort 123



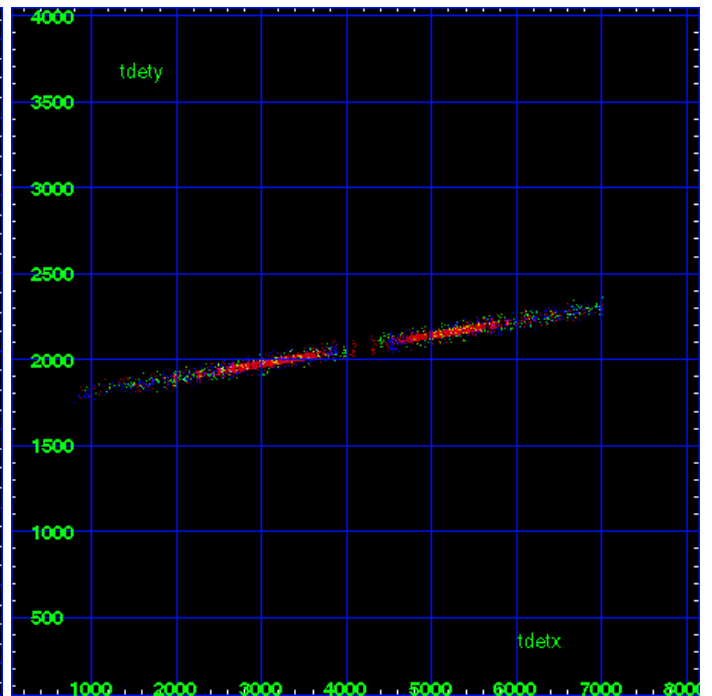
MEG Zero Order



MEG Order Sort ALL

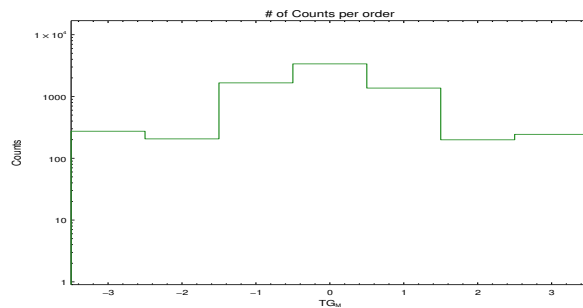


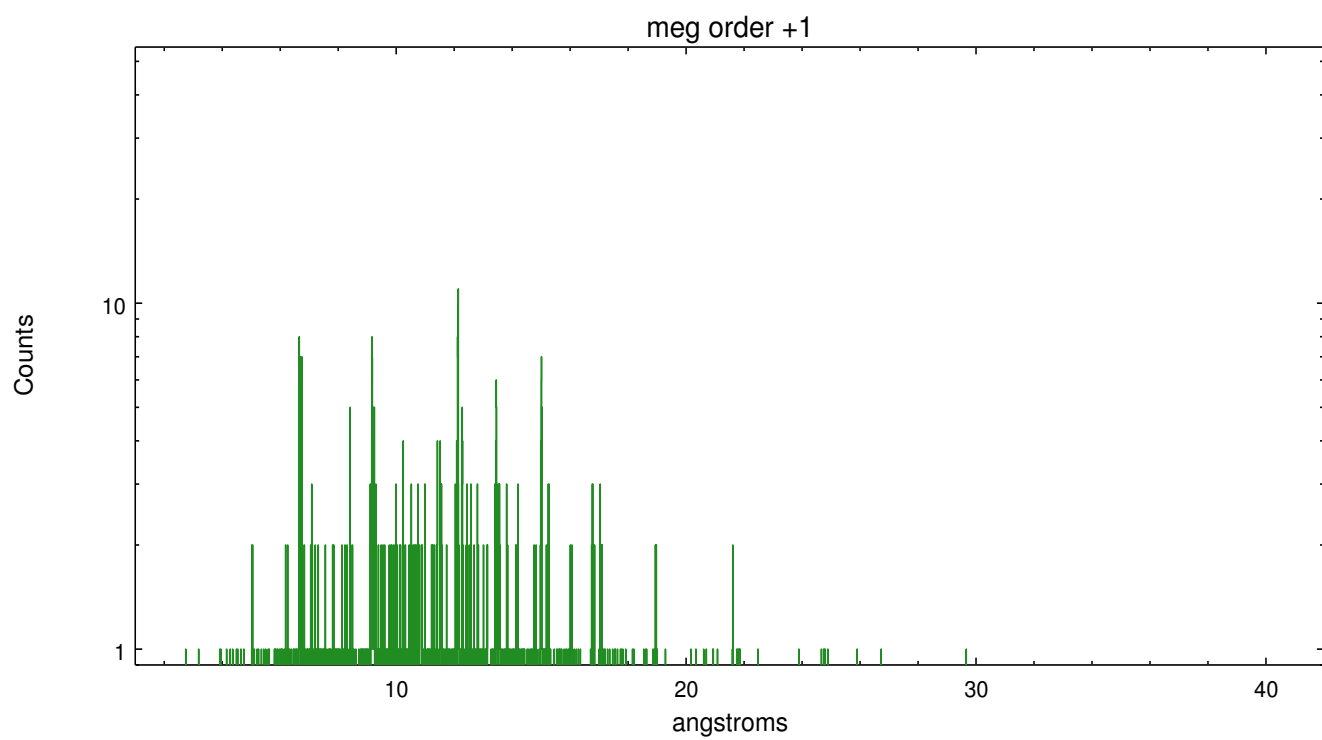
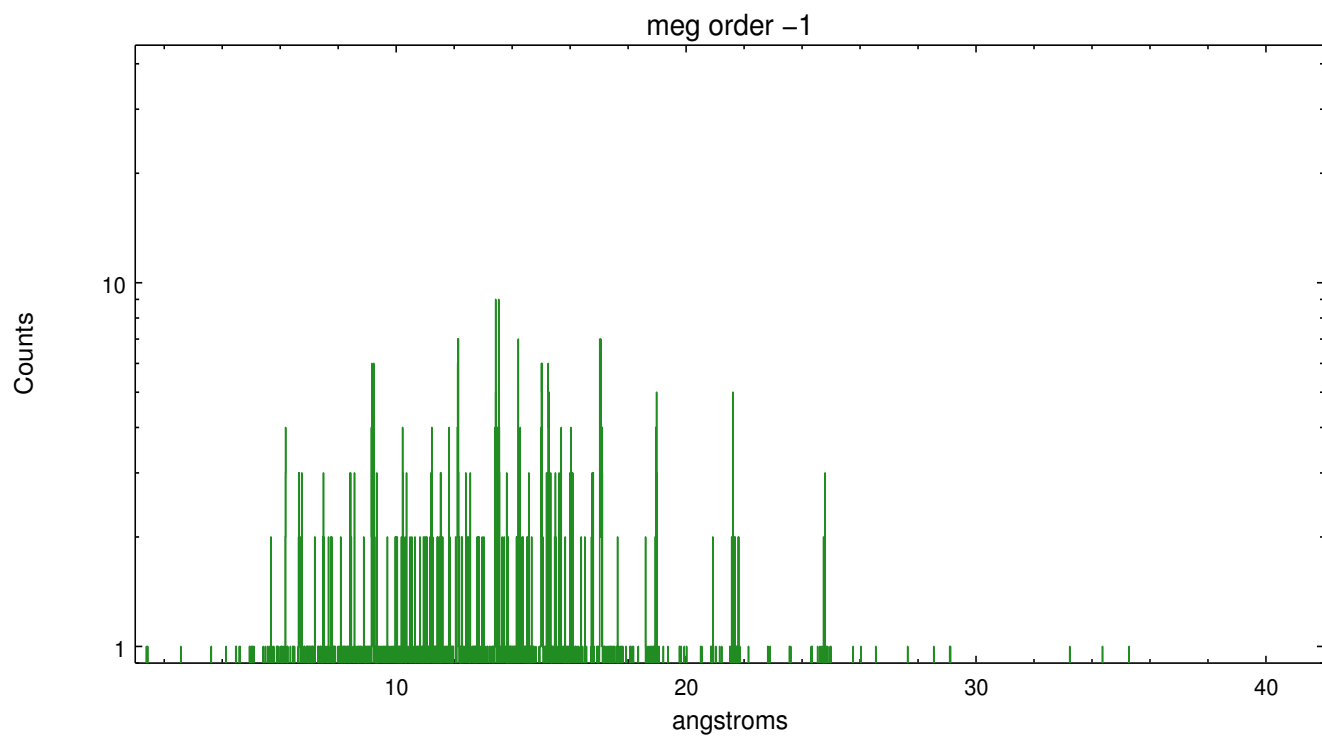
Spot Image MEG



Full Detector MEG

	order -3	order -2	order -1	order 0	order 1	order 2	order 3
Events	274	206	1661	3371	1368	199	244





A Summary

A.1 Status

V&V Scientist	Joy Nichols
V&V Date (YYYY-MM-DD)	2012.10.18
V&V Edition	1
V&V Disposition and Status	OK
V&V Charge Time	35.868

A.2 Comments