

V&V Reference Report

L2 ASCDS Version : 8.4.5

Observation 2791 - L2 Version 3
Chandra X-Ray Center

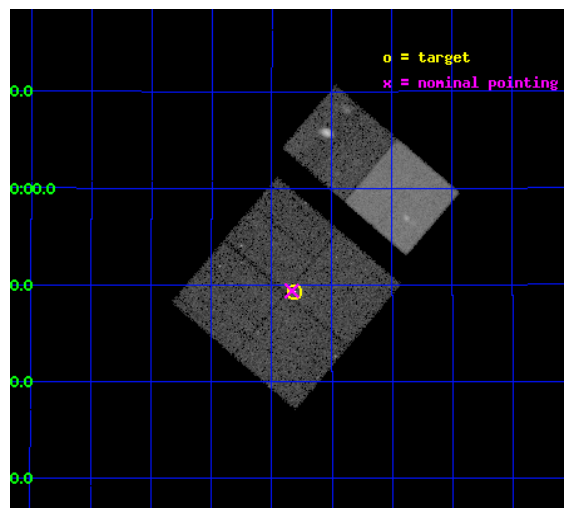
L2 Processing Date : Sep 30 2012

Contents

1	Front	2
2	OBI	3
2.1	OBI	3
2.1.1	Images	3
2.1.2	Bias	3
2.1.3	Parameters	4
2.1.4	Events	4
2.2	Compared Parameters	5
2.3	Aspect	6
2.4	Star Slots	9
2.4.1	Slot 3	9
2.4.2	Slot 4	10
2.4.3	Slot 5	11
2.4.4	Slot 6	12
2.4.5	Slot 7	13
2.5	FID Slots	14
2.5.1	Slot 0	14
2.5.2	Slot 1	15
2.5.3	Slot 2	16
A	Summary	17
A.1	Status	17
A.2	Comments	17

1 Front

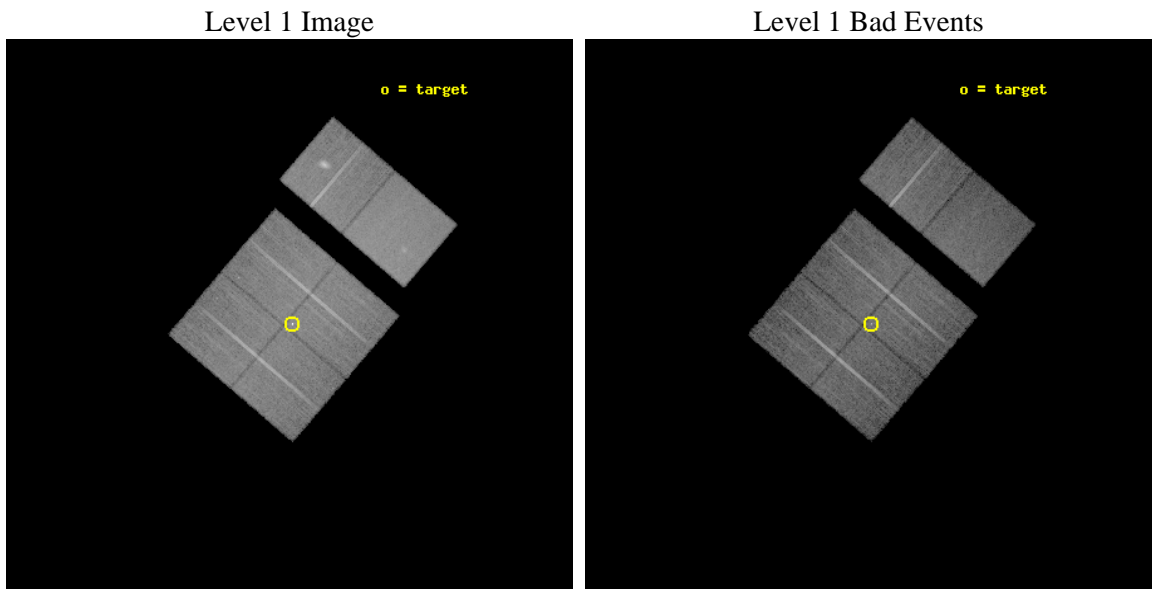
seq_num	500241	Sequence number
obs_id	2791	Observation id
title	ASTROMETRIC STUDY OF ISOLATED NEUTRON STARS	Proposal title
observer	Dr Christian Motch	Principal investigator
object	RX J1605+3249	Source name
dtycycle	0	
cycle	P	events from which exps? Prim/Second/Both
ra_targ	241.327917	Observer's specified target RA [deg]
dec_targ	32.822139	Observer's specified target Dec [deg]
ra_nom	241.33327311167	Nominal RA [deg]
dec_nom	32.823544599008	Nominal Dec [deg]
roll_nom	40.560249823636	Nominal Roll [deg]
revision	3	Processing version of data
ontime	20655.959039047	Sum of GTIs [s]
livetime	20394.40084817	Livetime [s]
ontime0	20659.200019225	Sum of GTIs [s]
ontime1	20659.200019225	Sum of GTIs [s]
ontime2	20659.200019225	Sum of GTIs [s]
ontime3	20655.959039047	Sum of GTIs [s]
ontime6	20659.200019225	Sum of GTIs [s]
ontime7	20659.200019225	Sum of GTIs [s]
l2events	143115	Number of level 2 events



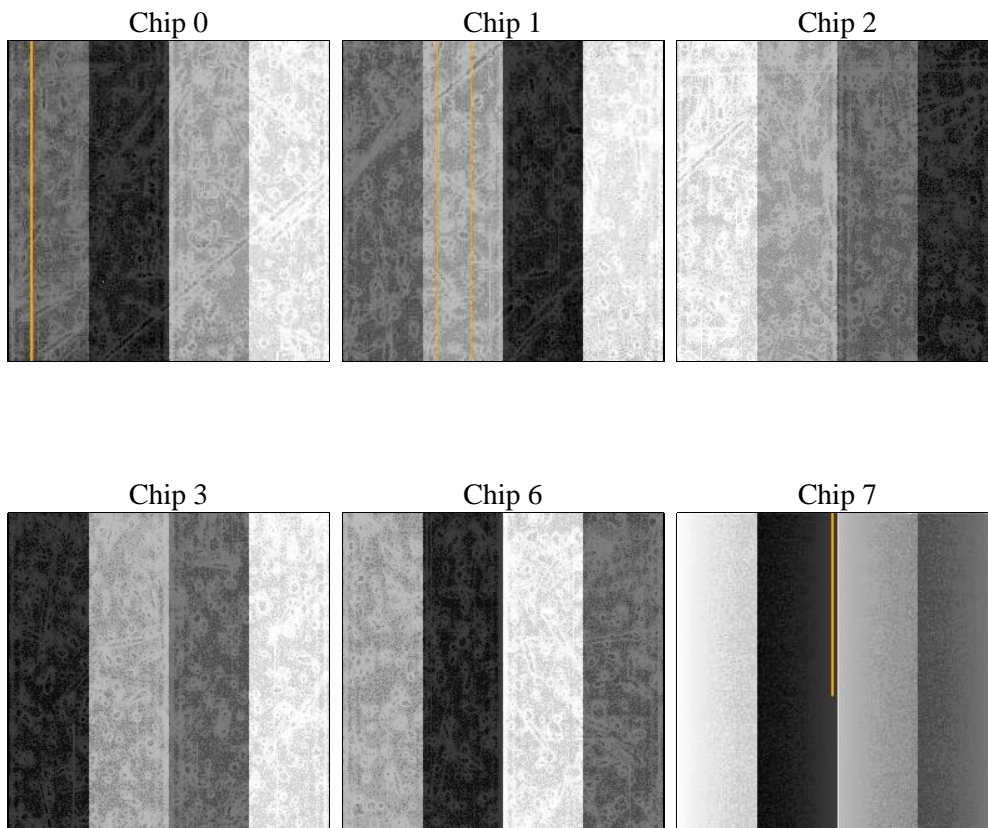
2 OBI

2.1 OBI

2.1.1 Images



2.1.2 Bias



2.1.3 Parameters

obi_num	1	Obi number	sched_exp_time	20696.385000	[s] Scheduled observation exposure time
ascdsver	8.4.5	Processing system revision	ontime	20655.959039047	Sum of GTIs [s]
caldbver	4.5.2	 	ontime0	20659.200019225	Sum of GTIs [s]
date	2012-09-30T04:14:42	Date and time of file creation	ontime1	20659.200019225	Sum of GTIs [s]
revision	3	Processing version of data	ontime2	20659.200019225	Sum of GTIs [s]
			ontime3	20655.959039047	Sum of GTIs [s]
			ontime6	20659.200019225	Sum of GTIs [s]
			ontime7	20659.200019225	Sum of GTIs [s]
			l1events	802897	Number of level 1 events

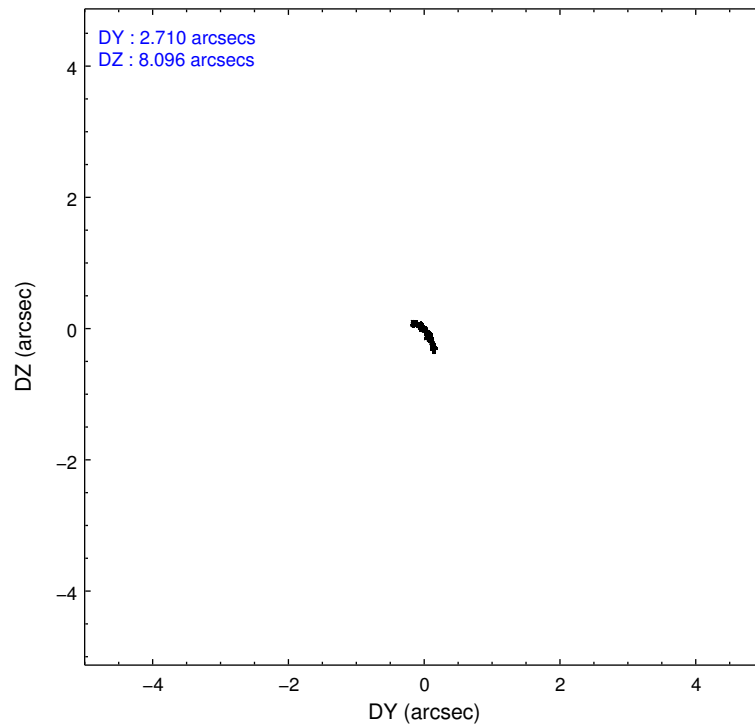
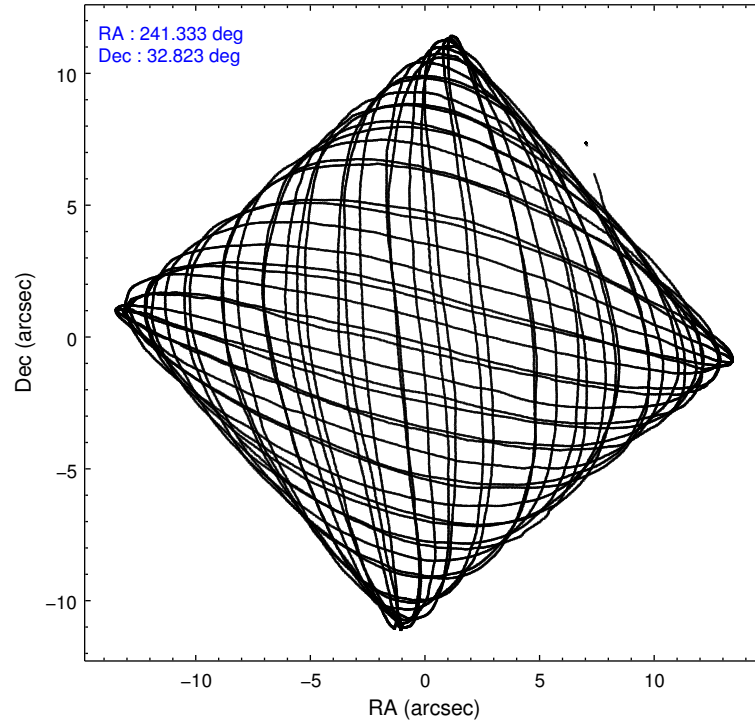
2.1.4 Events

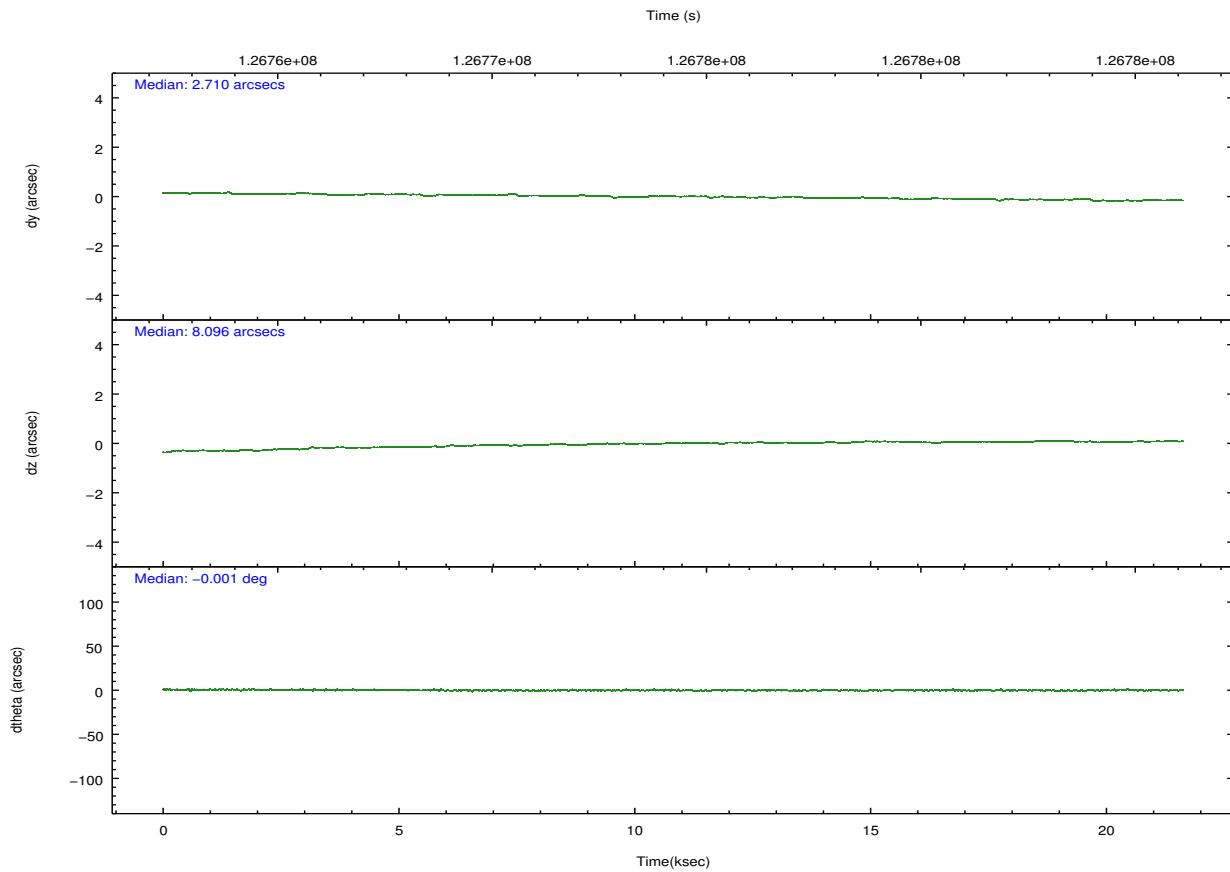
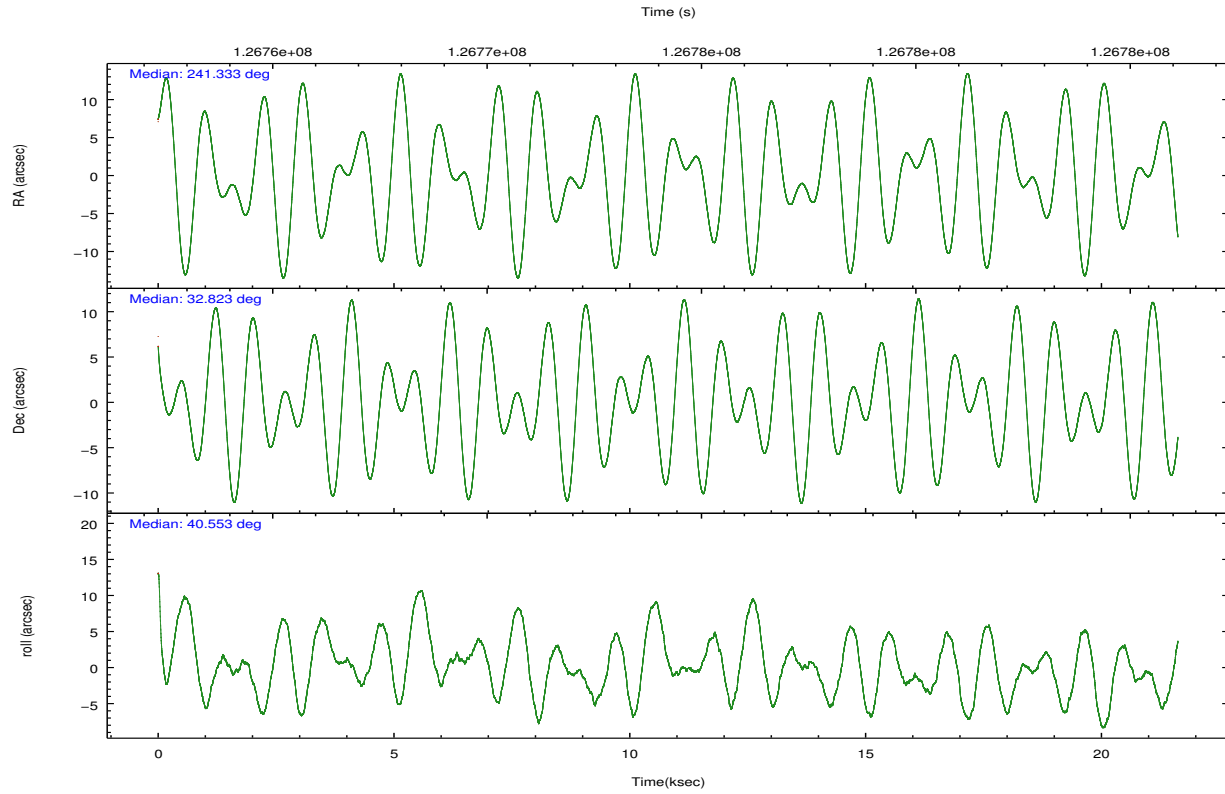
	ccd 0	ccd 1	ccd 2	ccd 3	ccd 6	ccd 7		ccd 0	ccd 1	ccd 2	ccd 3	ccd 6	ccd 7
level 1 events	118138	116466	130715	132209	139196	166173	grade 0 events	6542	6467	6649	9061	10903	6931
rejected events	102426	100284	115336	113791	117916	96728		5%	5%	5%	6%	7%	4%
rejected %	86%	86%	88%	86%	84%	58%	grade 1 events	66	76	75	272	71	159
								0%	0%	0%	0%	0%	0%
							grade 2 events	3571	3466	3405	3576	3926	13855
								3%	2%	2%	2%	2%	8%
							grade 3 events	1486	1561	1273	1514	1613	6331
								1%	1%	0%	1%	1%	3%
							grade 4 events	1357	1642	1358	1493	1604	6187
								1%	1%	1%	1%	1%	3%
							grade 5 events	4599	5094	4487	5314	5762	15883
								3%	4%	3%	4%	4%	9%
							grade 6 events	2762	3048	2696	2777	3238	36149
								2%	2%	2%	2%	2%	21%
							grade 7 events	97755	95112	110772	108202	112079	80678
								82%	81%	84%	81%	80%	48%

2.2 Compared Parameters

Parameter	Planned	Actual	Parameter	Planned	Actual
Instrument	ACIS	ACIS	Obspar format version number	7	7
Detector	ACIS-012367	ACIS-012367	Obspar file type	PREDICTED	ACTUAL
Grating	NONE	NONE	Obspar update status	NONE	UPDATED
Data mode	FAINT	FAINT	Number of optional ACIS chips dropped	0	0
Observation mode	POINTING	POINTING	On-chip summing requested	N	N
[deg] Pointing RA	241.322462	241.3332731116725	Subarray requested	NONE	NONE
[deg] Pointing Dec	32.797688	32.82354459900829	Alternating exposures requested	N	N
[deg] Pointing Roll	40.357425	40.56024982363641	[s] Primary exposure time	0.000000	3.2
[mm] SIM focus pos	-0.782348	-0.7809083437167272			
[mm] SIM defocus	0	0.001439871863259334			
[mm] SIM translation stage pos	-233.592463	-233.5874344608287			
[mm] SIM translation stage offset	0	-0.005018542100998502			
[s] Observation start time (MET)	126764334.184000	126763011.69574			
Observation start date	2002-01-07T04:17:50	2002-01-07T03:56:51			
[s] Observation end time (MET)	126785031.184000	126785345.42164			
Observation end date	2002-01-07T10:02:47	2002-01-07T10:09:05			
Read mode	TIMED	TIMED			

2.3 Aspect



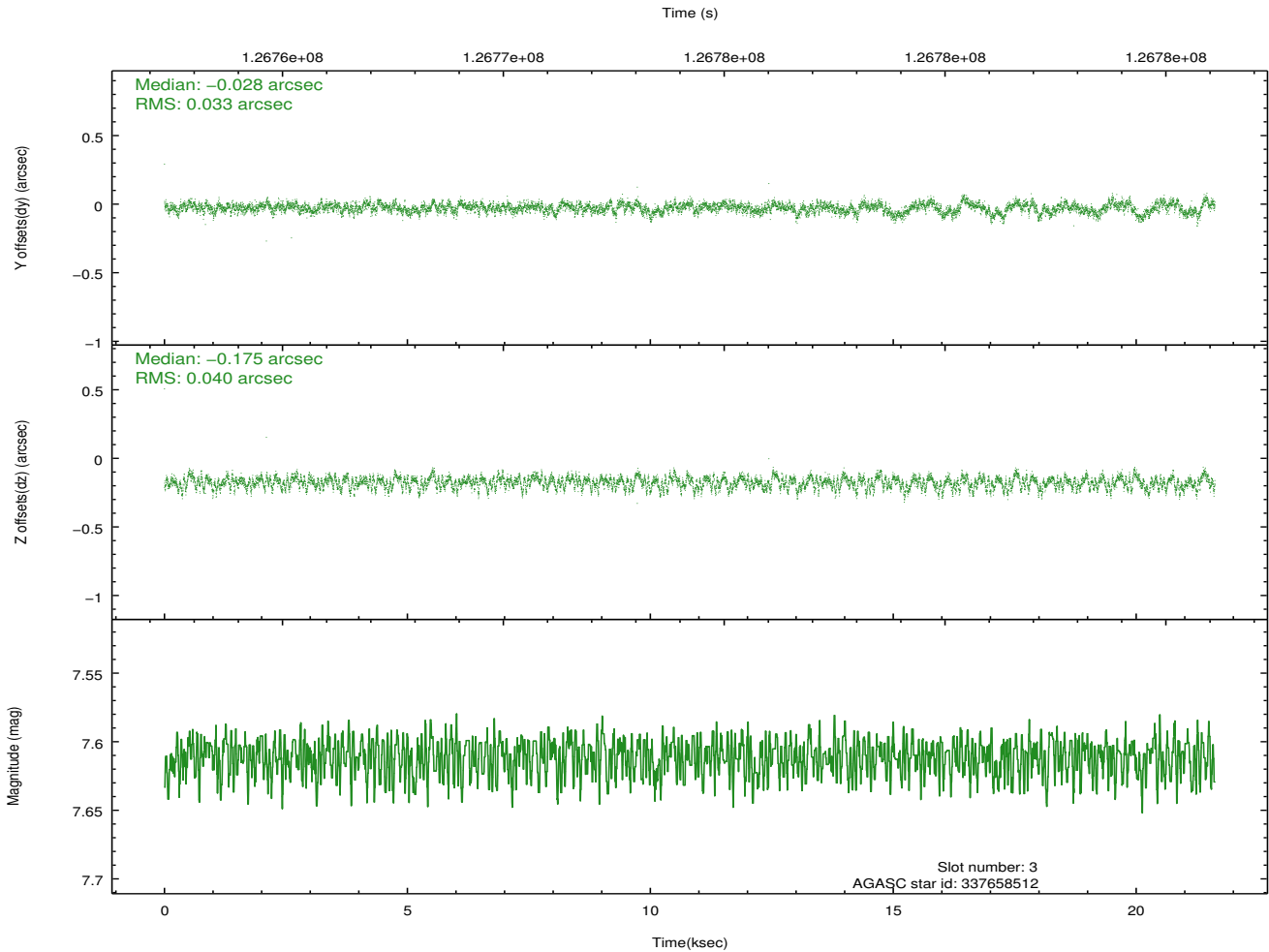
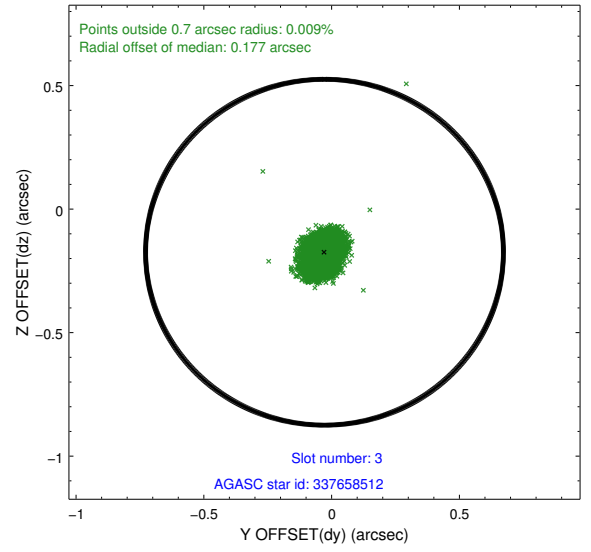
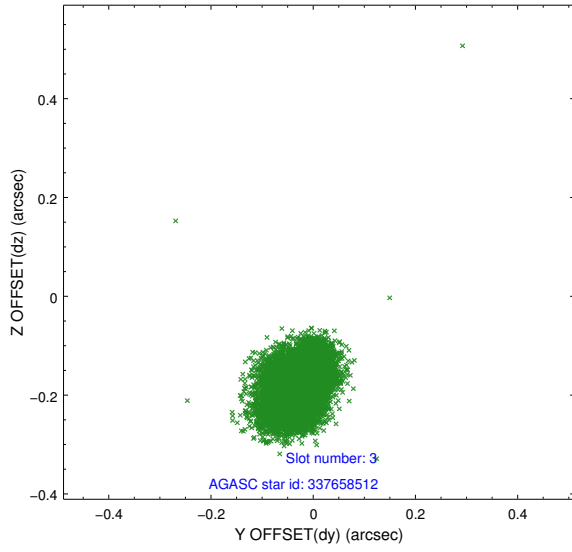


Slot Statistics

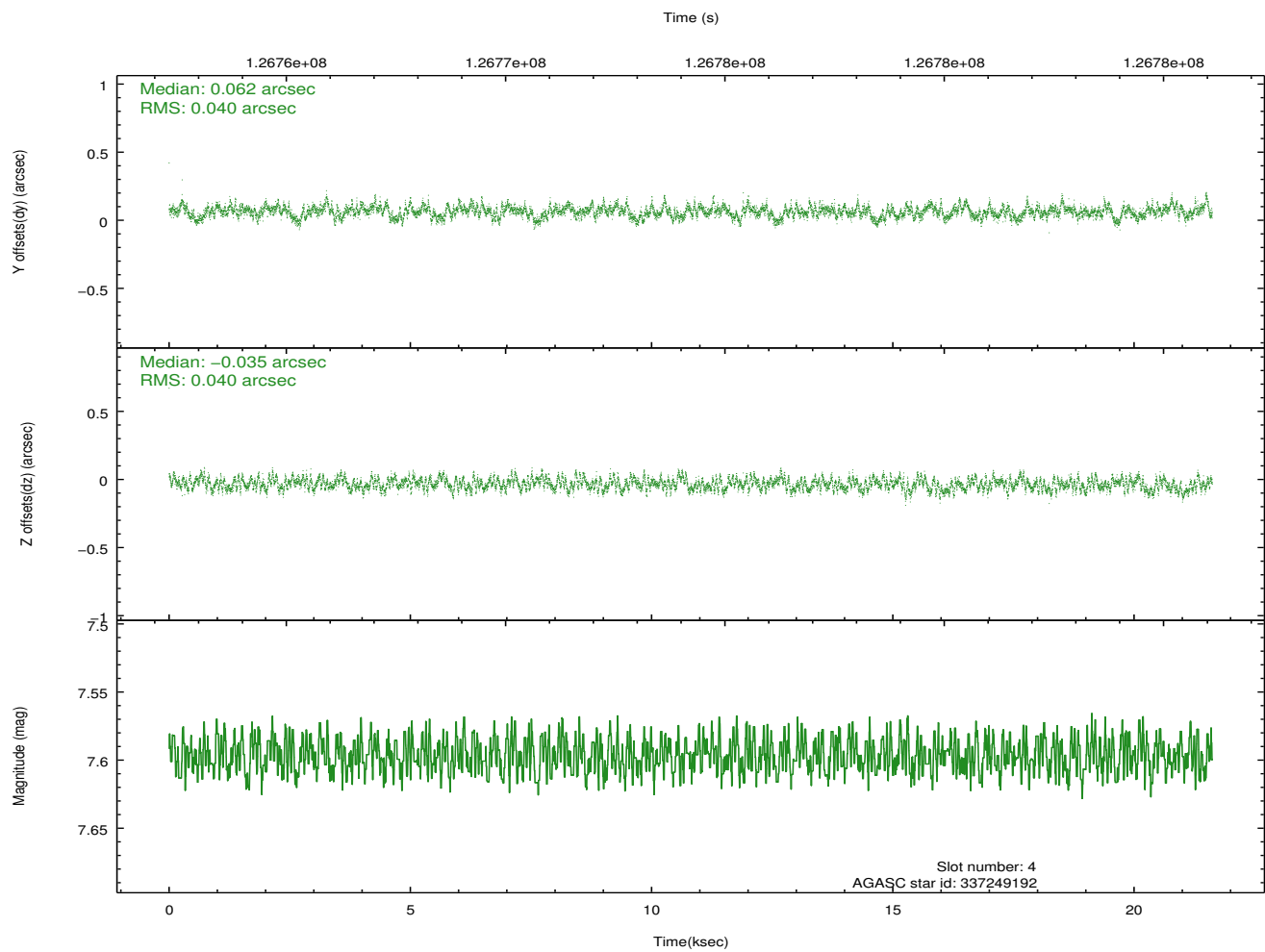
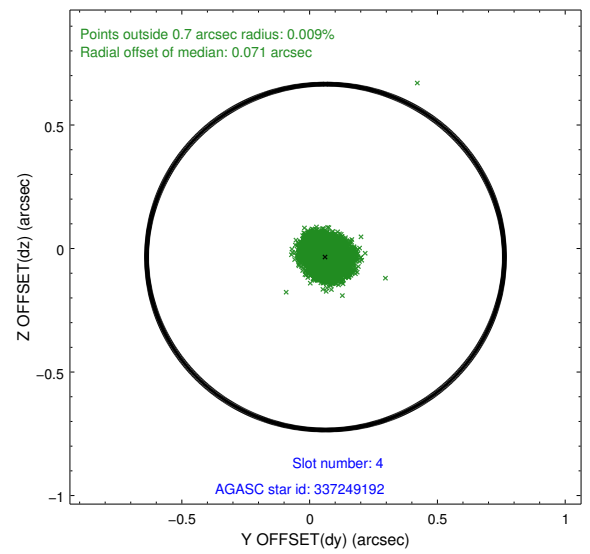
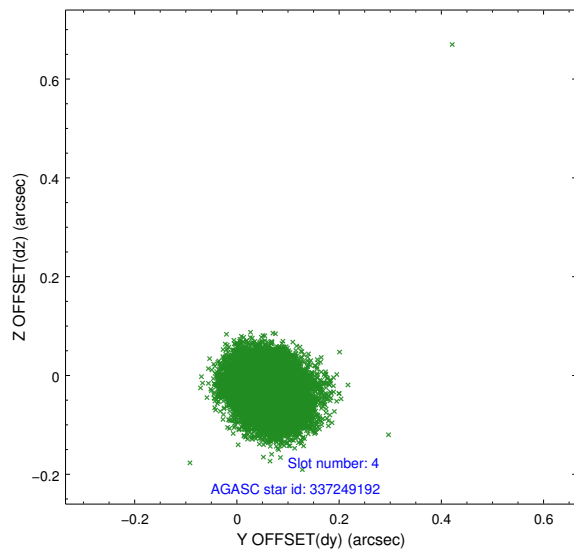
slot	status	id	mag	n_pts	med_dy	med_dz	dr1	dr2	ra	dec	mean_y	mean_z
0	FID	ACIS-I-1	7.24	5274	-0.023	0.058	0.011	0.020	0.000000	0.000000	937.06	-831.42
1	FID	ACIS-I-5	7.24	5273	-0.039	0.039	0.009	0.016	0.000000	0.000000	-1810.95	1066.00
2	FID	ACIS-I-6	7.26	5273	-0.030	-0.027	0.007	0.012	0.000000	0.000000	402.46	1710.59
3	GUIDE	337658512	7.61	10544	-0.028	-0.175	0.054	0.091	241.267822	33.152378	701.29	1079.88
4	GUIDE	337249192	7.60	10544	0.062	-0.035	0.061	0.095	241.081838	32.497244	-1256.43	-350.34
5	GUIDE	337254664	6.91	10546	-0.161	0.166	0.051	0.083	241.786074	32.379583	101.37	-2056.90
6	GUIDE	337651160	9.08	10542	-0.051	0.084	0.084	0.135	242.244617	32.579799	1631.91	-2399.53
7	GUIDE	337258984	9.50	10540	0.178	-0.038	0.111	0.207	241.172034	32.158264	-1839.28	-1457.15

2.4 Star Slots

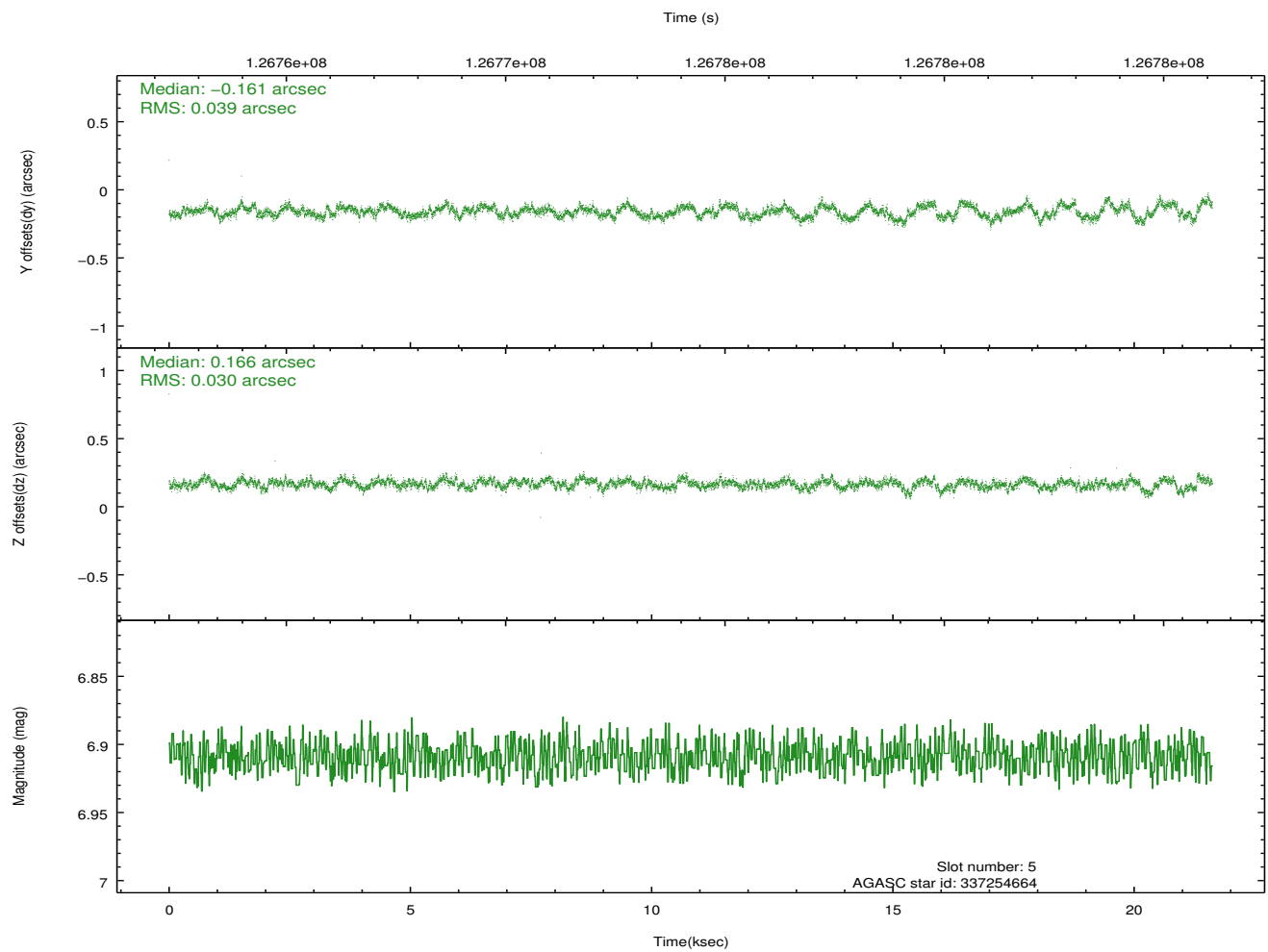
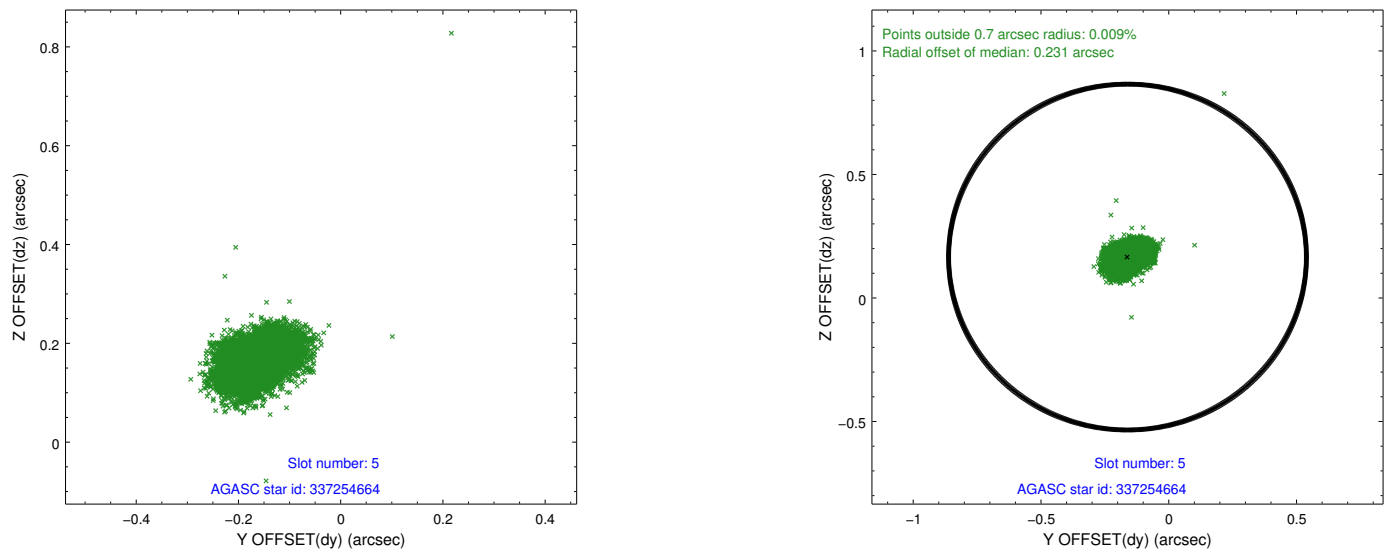
2.4.1 Slot 3



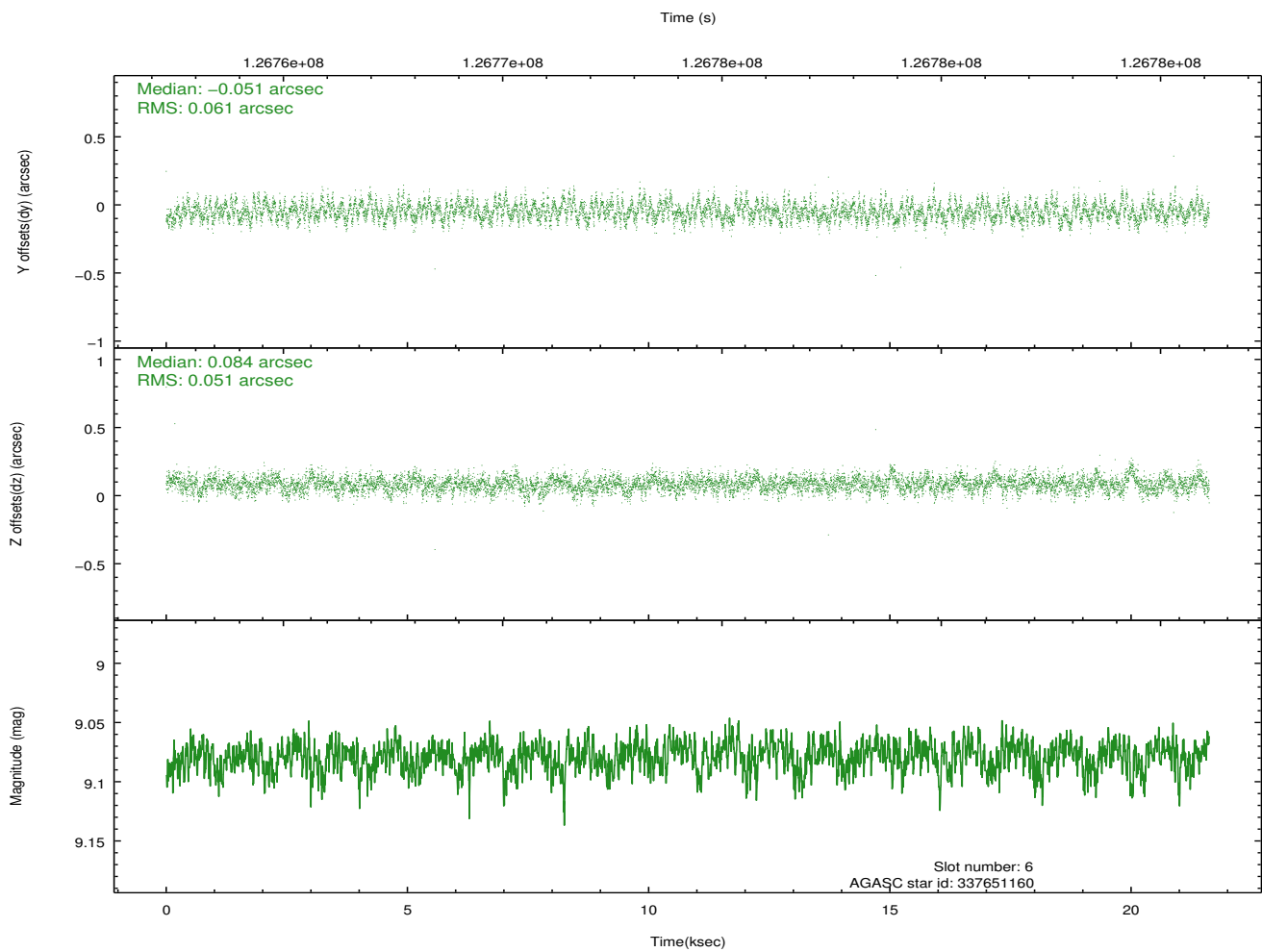
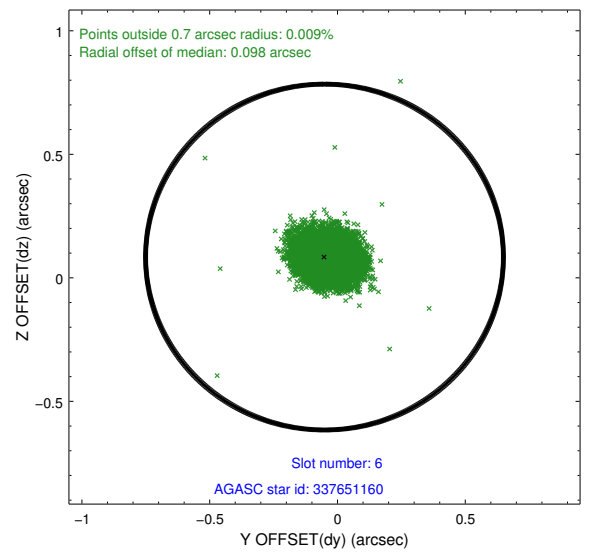
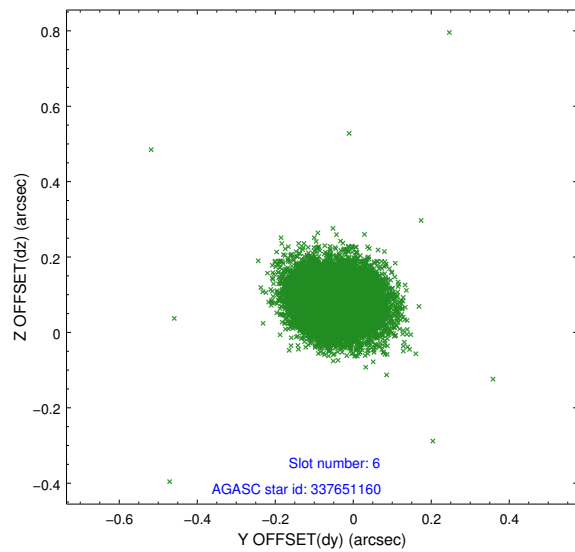
2.4.2 Slot 4



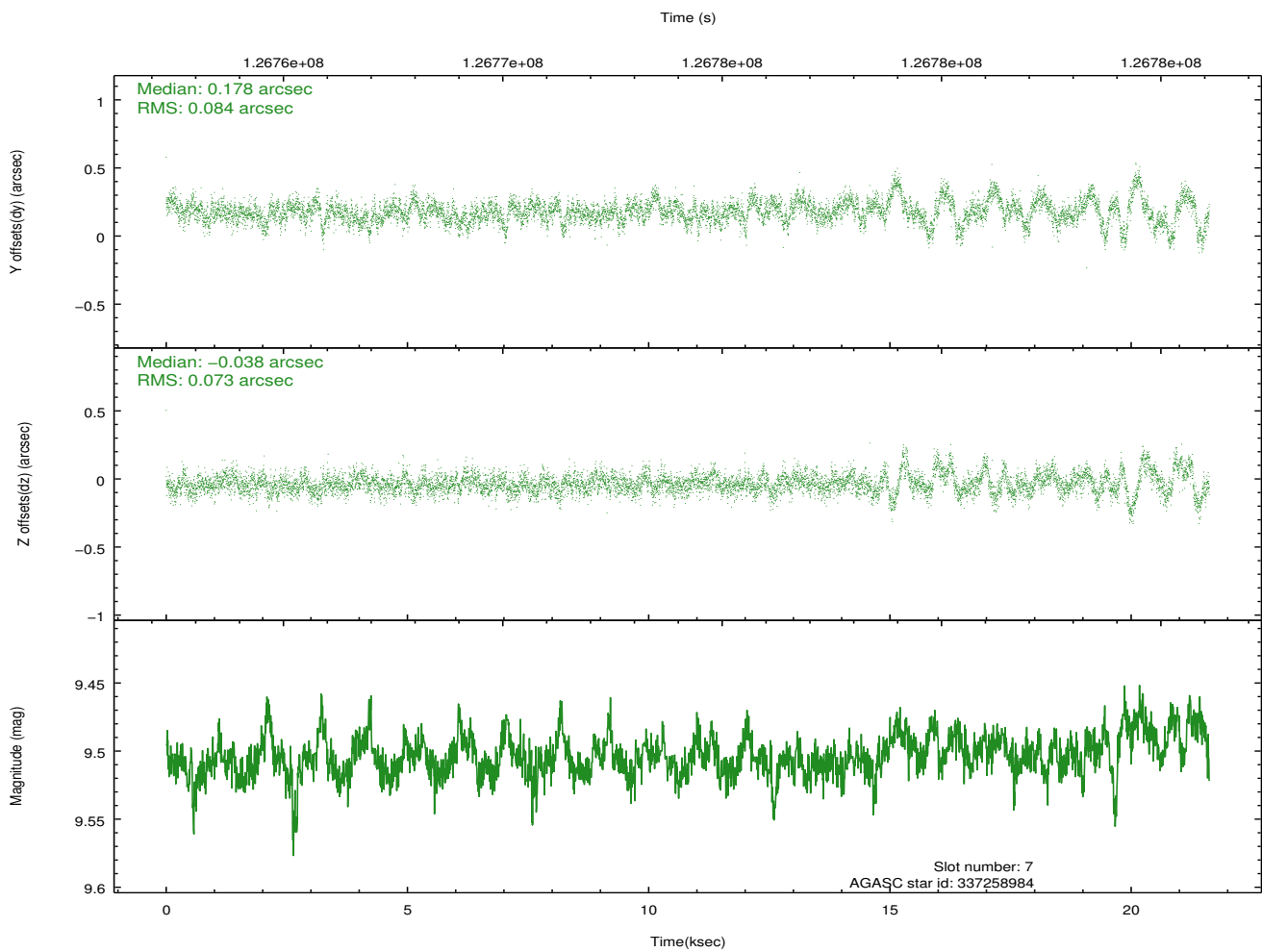
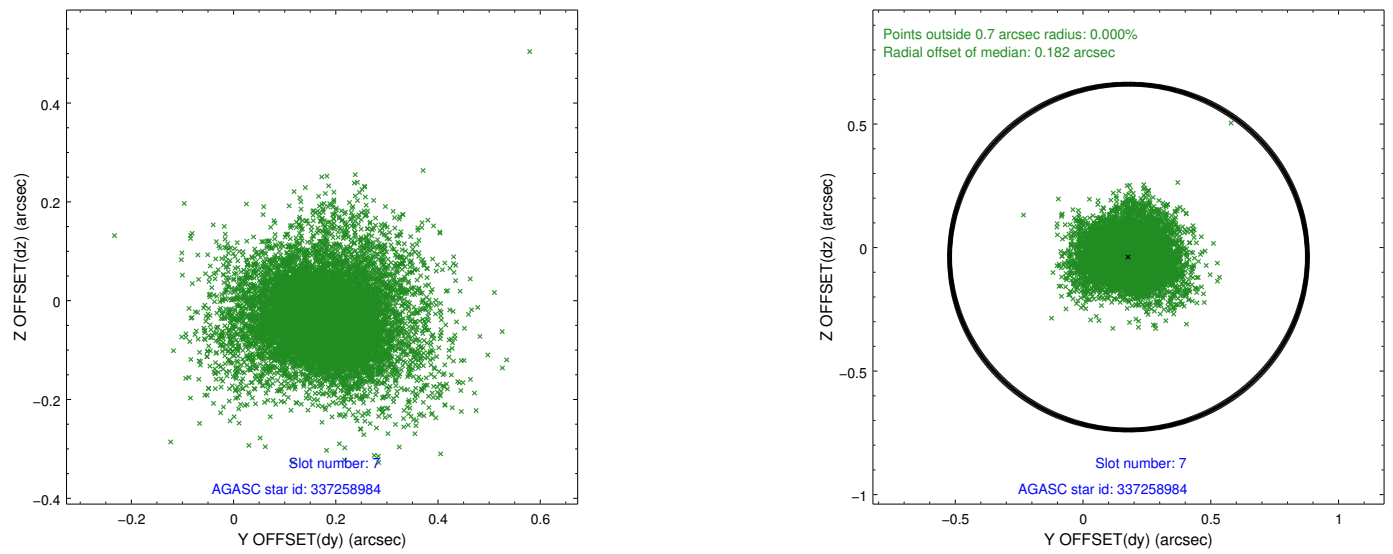
2.4.3 Slot 5



2.4.4 Slot 6

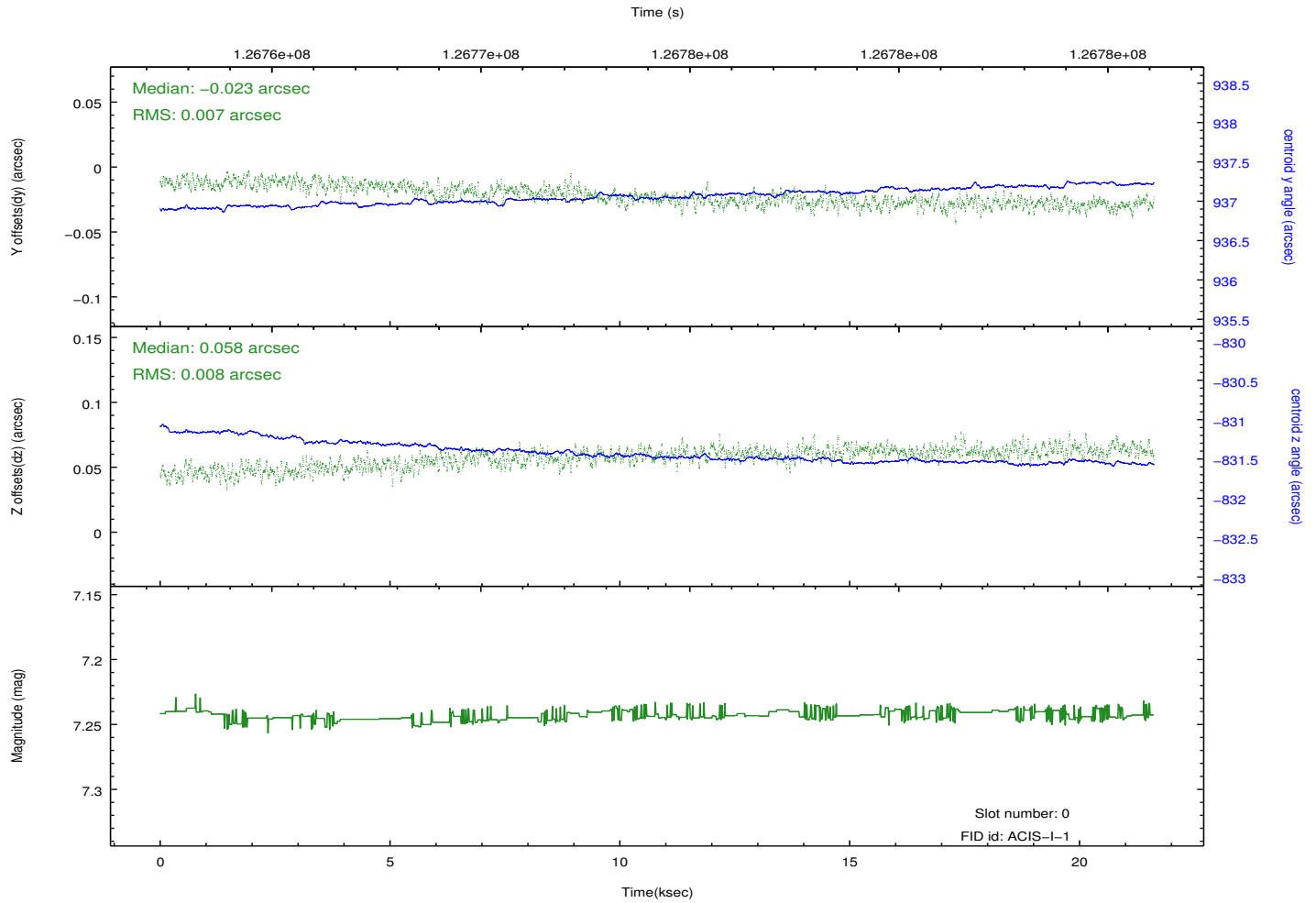
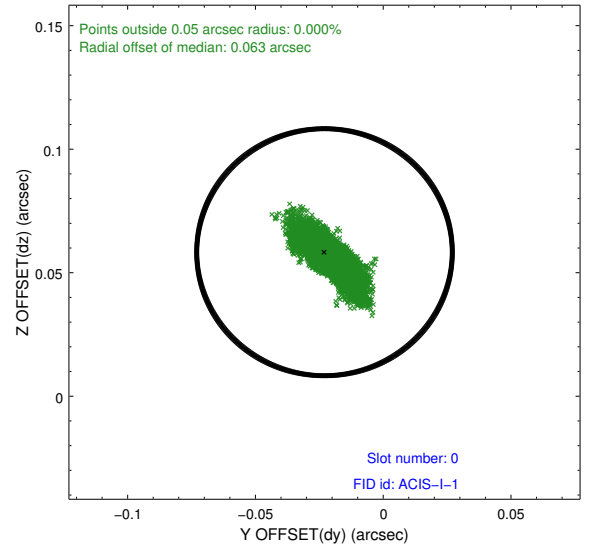
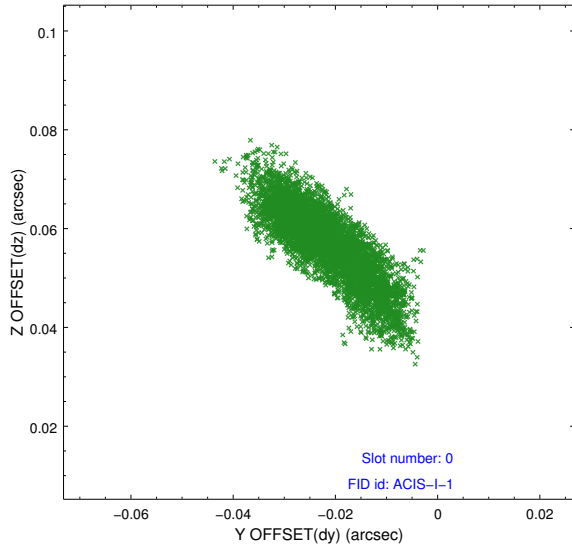


2.4.5 Slot 7

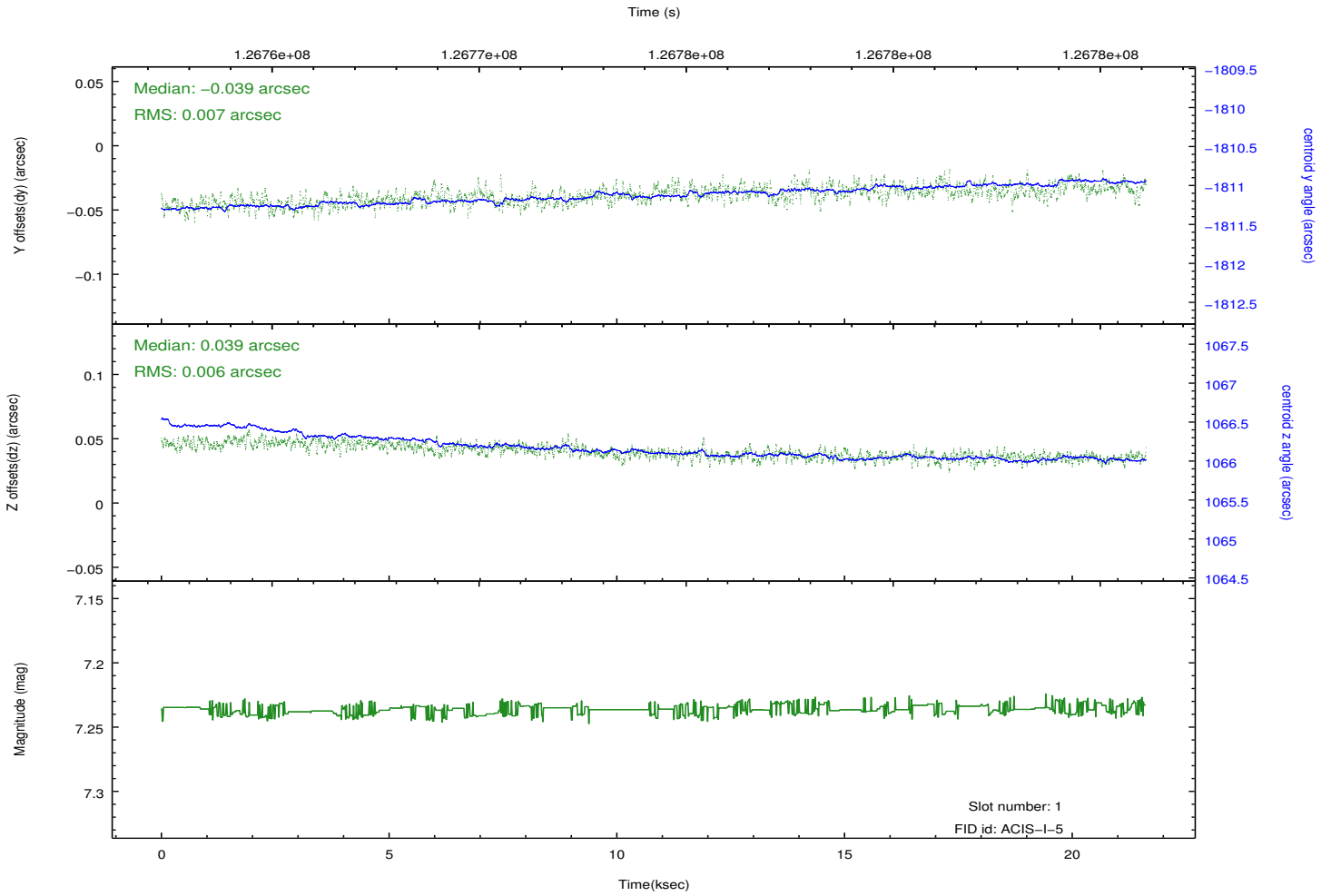
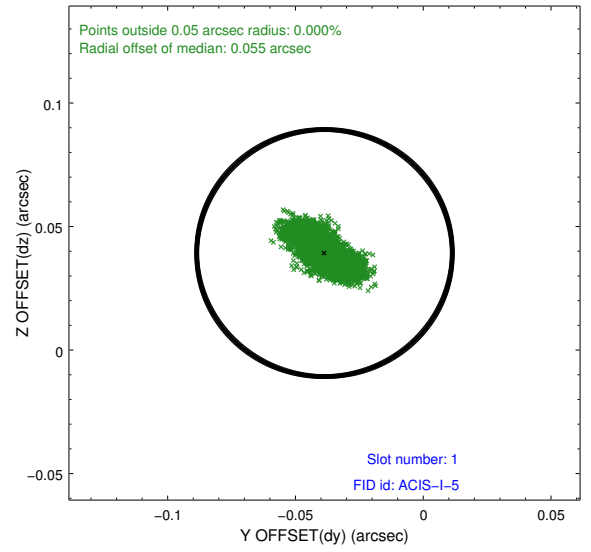
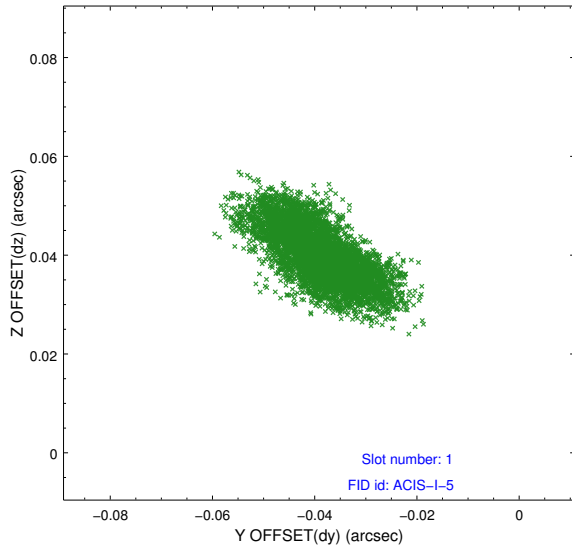


2.5 FID Slots

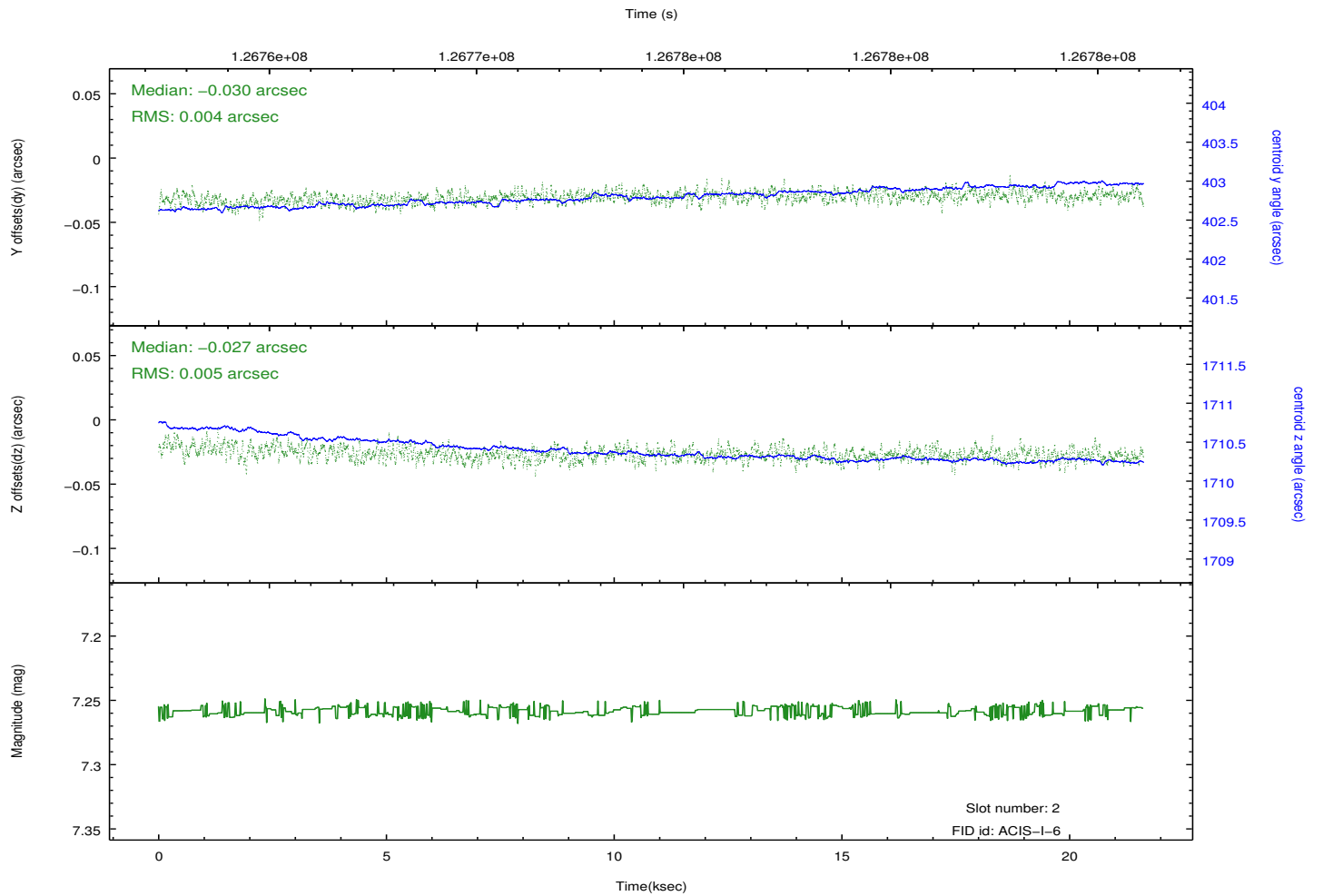
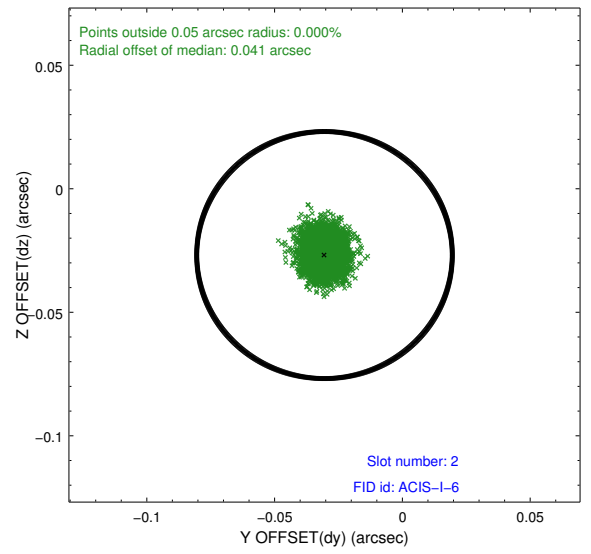
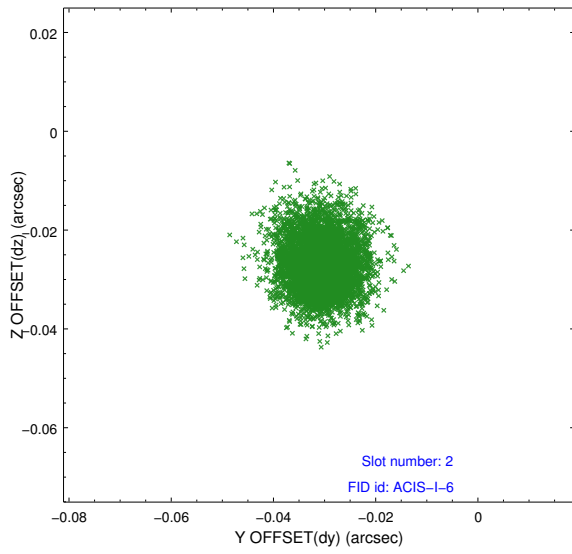
2.5.1 Slot 0



2.5.2 Slot 1



2.5.3 Slot 2



A Summary

A.1 Status

V&V Scientist	Jen Lauer
V&V Date (YYYY-MM-DD)	2012.10.02
V&V Edition	1
V&V Disposition and Status	OK
V&V Charge Time	20.659

A.2 Comments