

V&V Reference Report

L2 ASCDS Version : 8.4.5

Observation 2921 - L2 Version 3
Chandra X-Ray Center

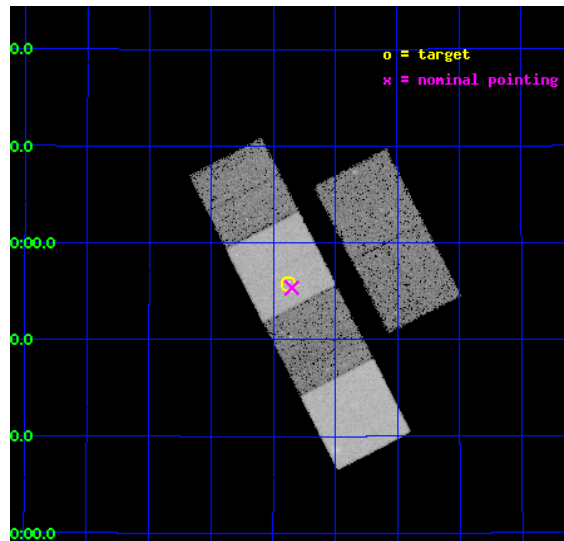
L2 Processing Date : Oct 9 2012

Contents

1	Front	2
2	OBI	3
2.1	OBI	3
2.1.1	Images	3
2.1.2	Bias	3
2.1.3	Parameters	4
2.1.4	Events	4
2.2	Compared Parameters	5
2.3	Aspect	6
2.4	Star Slots	9
2.4.1	Slot 3	9
2.4.2	Slot 4	10
2.4.3	Slot 5	11
2.4.4	Slot 6	12
2.4.5	Slot 7	13
2.5	FID Slots	14
2.5.1	Slot 0	14
2.5.2	Slot 1	15
2.5.3	Slot 2	16
A	Summary	17
A.1	Status	17
A.2	Comments	17

1 Front

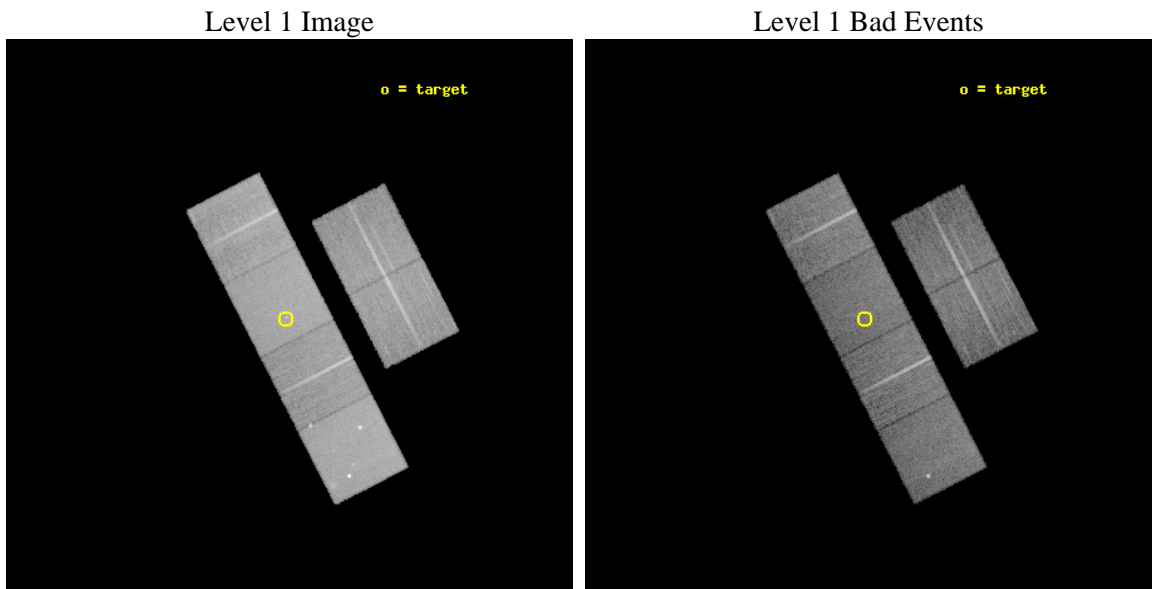
seq_num	600258	Sequence number
obs_id	2921	Observation id
title	FURTHER PROBING THE NATURE OF SUPER-LUMINOUS X-RAY SOURCES IN NEARBY GALAXIES	Proposal title
observer	Dr Timothy Roberts	Principal investigator
object	NGC 4136 X-1	Source name
dtcycle	0	
cycle	P	events from which exps? Prim/Second/Both
ra_targ	182.344167	Observer's specified target RA [deg]
dec_targ	29.930278	Observer's specified target Dec [deg]
ra_nom	182.33739724957	Nominal RA [deg]
dec_nom	29.922547541708	Nominal Dec [deg]
roll_nom	242.80768340032	Nominal Roll [deg]
revision	3	Processing version of data
ontime	19961.161511421	Sum of GTIs [s]
livetime	19708.401265195	Livetime [s]
ontime2	19961.202551425	Sum of GTIs [s]
ontime3	19961.038391411	Sum of GTIs [s]
ontime5	19961.120471418	Sum of GTIs [s]
ontime6	19961.079431415	Sum of GTIs [s]
ontime7	19961.161511421	Sum of GTIs [s]
ontime8	19960.997351438	Sum of GTIs [s]
l2events	199932	Number of level 2 events



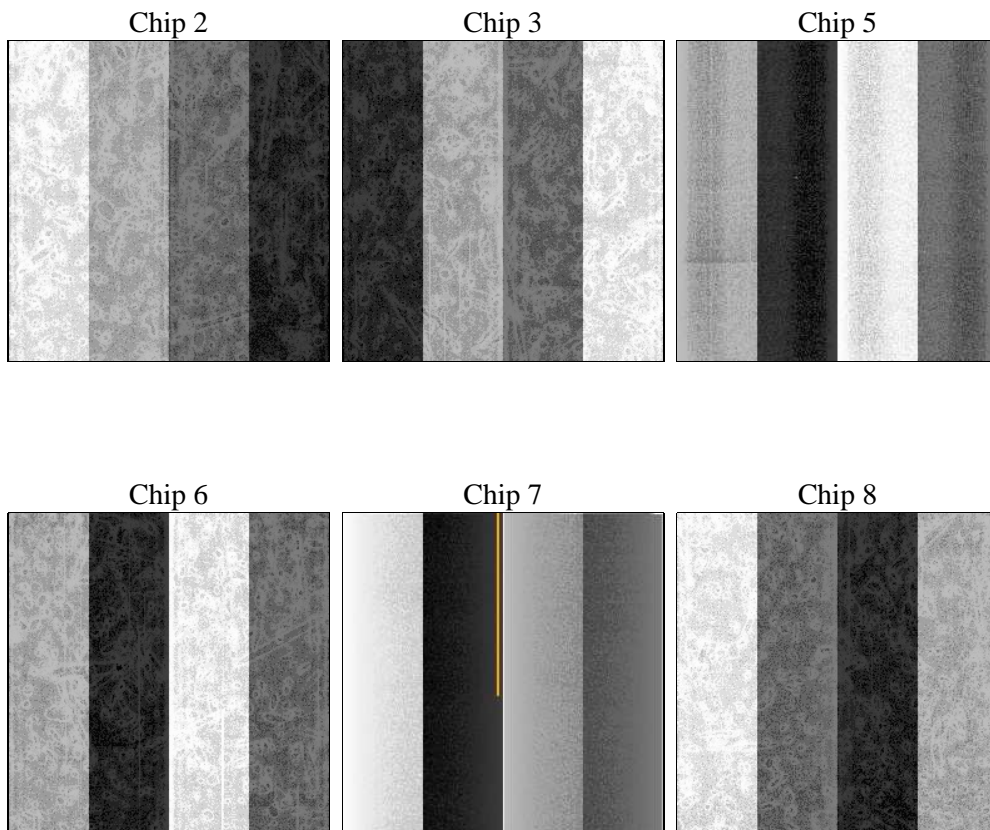
2 OBI

2.1 OBI

2.1.1 Images



2.1.2 Bias



2.1.3 Parameters

obi_num	1	Obi number	sched_exp_time	20000.000000	[s] Scheduled observation exposure time
ascdsver	8.4.5	Processing system revision	ontime	19961.161511421	Sum of GTIs [s]
caldsver	4.5.2	 	ontime2	19961.202551425	Sum of GTIs [s]
date	2012-10-09T02:53:55	Date and time of file creation	ontime3	19961.038391411	Sum of GTIs [s]
revision	3	Processing version of data	ontime5	19961.120471418	Sum of GTIs [s]
			ontime6	19961.079431415	Sum of GTIs [s]
			ontime7	19961.161511421	Sum of GTIs [s]
			ontime8	19960.997351438	Sum of GTIs [s]
			l1events	900299	Number of level 1 events

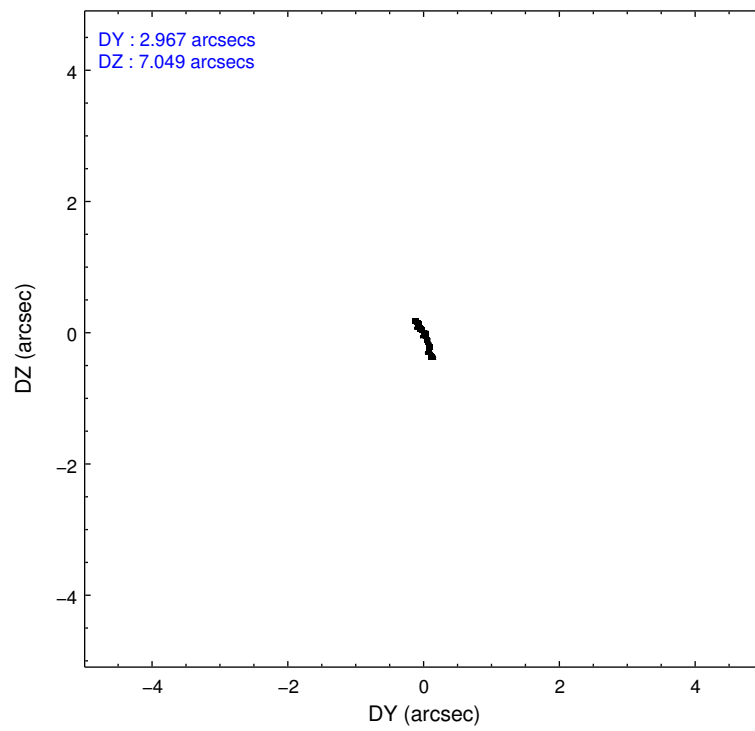
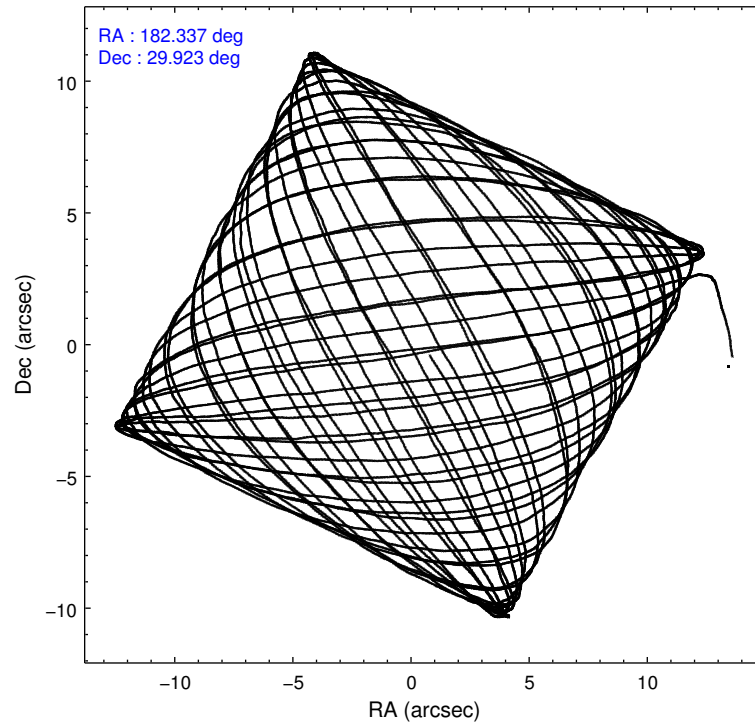
2.1.4 Events

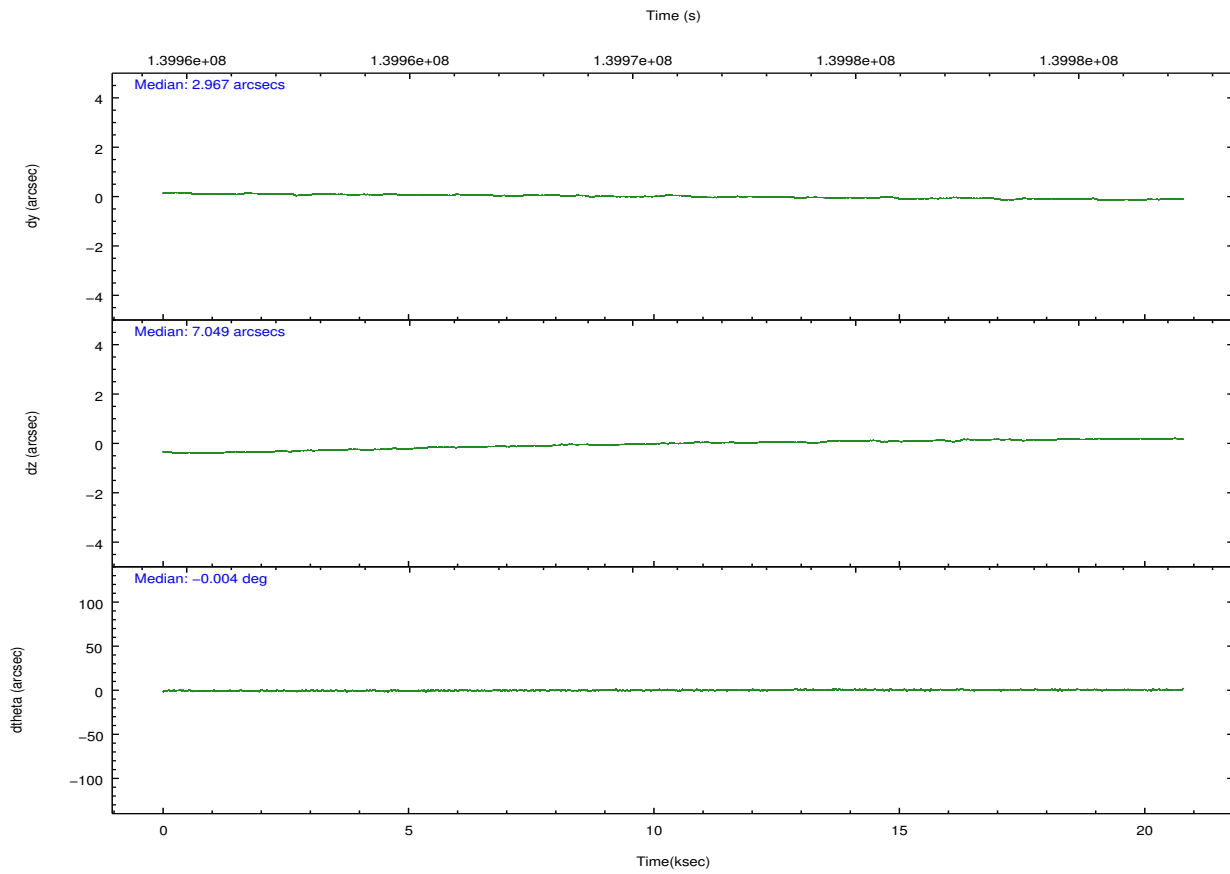
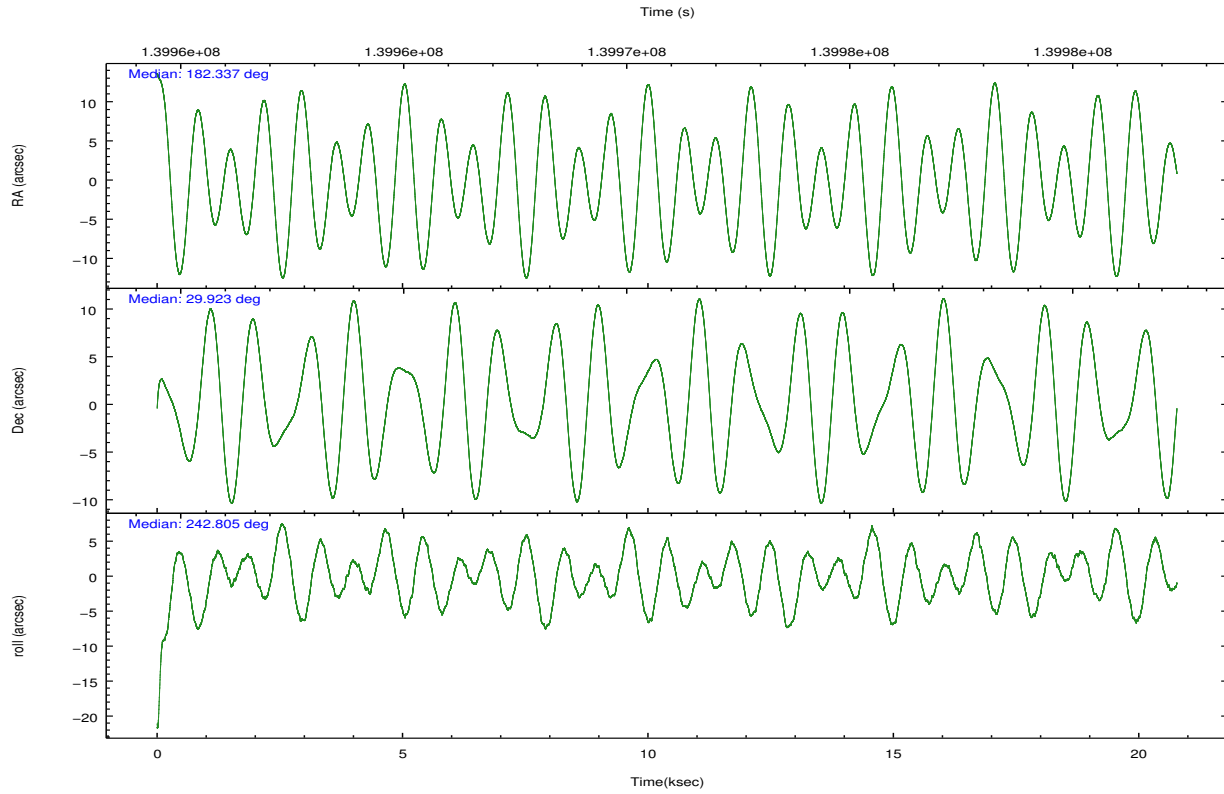
	ccd 2	ccd 3	ccd 5	ccd 6	ccd 7	ccd 8		ccd 2	ccd 3	ccd 5	ccd 6	ccd 7	ccd 8
level 1 events	131216	122017	188608	128968	168136	161354	grade 0 events	6150	5942	10340	5895	6554	10216
rejected events	116506	107702	100934	114076	98653	127866		4%	4%	5%	4%	3%	6%
rejected %	88%	88%	53%	88%	58%	79%	grade 1 events	56	55	221	62	175	87
								0%	0%	0%	0%	0%	0%
							grade 2 events	3181	2973	26047	3037	13719	7286
								2%	2%	13%	2%	8%	4%
							grade 3 events	1361	1377	3894	1555	6181	3567
								1%	1%	2%	1%	3%	2%
							grade 4 events	1347	1405	3436	1418	6338	3427
								1%	1%	1%	1%	3%	2%
							grade 5 events	4603	5078	14539	5596	15854	7070
								3%	4%	7%	4%	9%	4%
							grade 6 events	2675	2621	43970	2989	36698	8995
								2%	2%	23%	2%	21%	5%
							grade 7 events	111843	102566	86161	108416	82617	120706
								85%	84%	45%	84%	49%	74%

2.2 Compared Parameters

Parameter	Planned	Actual	Parameter	Planned	Actual
Instrument	ACIS	ACIS	Obspar format version number	7	7
Detector	ACIS-235678	ACIS-235678	Obspar file type	PREDICTED	ACTUAL
Grating	NONE	NONE	Obspar update status	NONE	UPDATED
Data mode	FAINT	FAINT	Number of optional ACIS chips dropped	0	0
Observation mode	POINTING	POINTING	On-chip summing requested	N	N
[deg] Pointing RA	182.335441	182.3373972495711	Subarray requested	NONE	NONE
[deg] Pointing Dec	29.949761	29.92254754170759	Alternating exposures requested	N	N
[deg] Pointing Roll	242.652031	242.8076834003249	[s] Primary exposure time	0.000000	3.2
[mm] SIM focus pos	-0.684267	-0.6828225247311905			
[mm] SIM defocus	0	0.001444936568705701			
[mm] SIM translation stage pos	-190.132523	-190.1400660498719			
[mm] SIM translation stage offset	0	0.00754346686406393			
[s] Observation start time (MET)	139961290.184000	139960038.41832			
Observation start date	2002-06-08T22:07:06	2002-06-08T21:47:18			
[s] Observation end time (MET)	139981290.184000	139981819.66921			
Observation end date	2002-06-09T03:40:26	2002-06-09T03:50:19			
Read mode	TIMED	TIMED			

2.3 Aspect



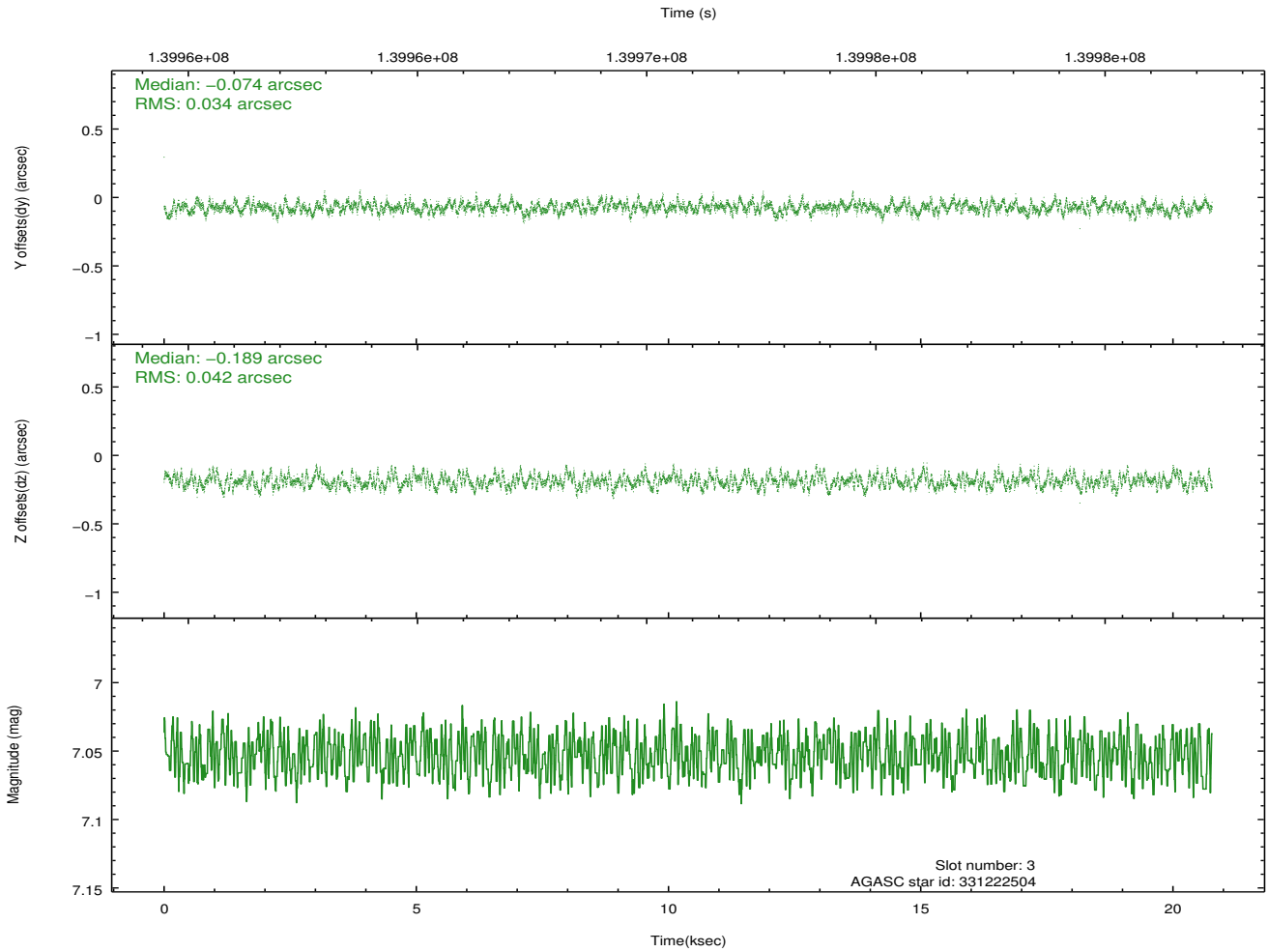
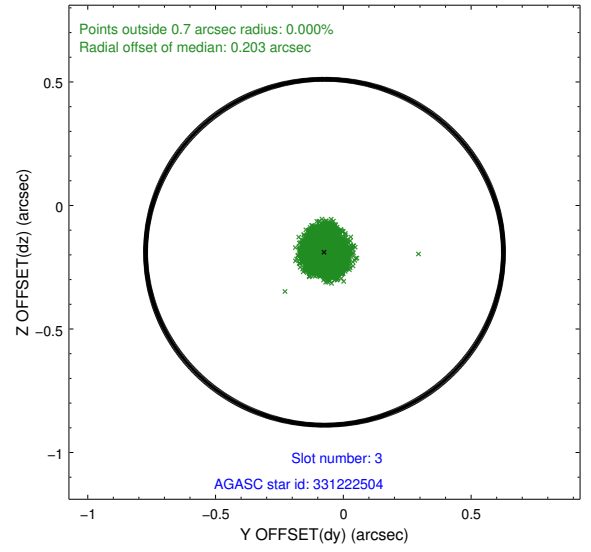
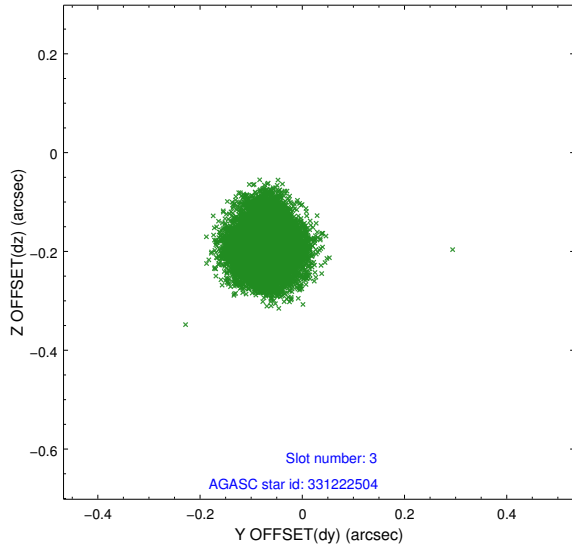


Slot Statistics

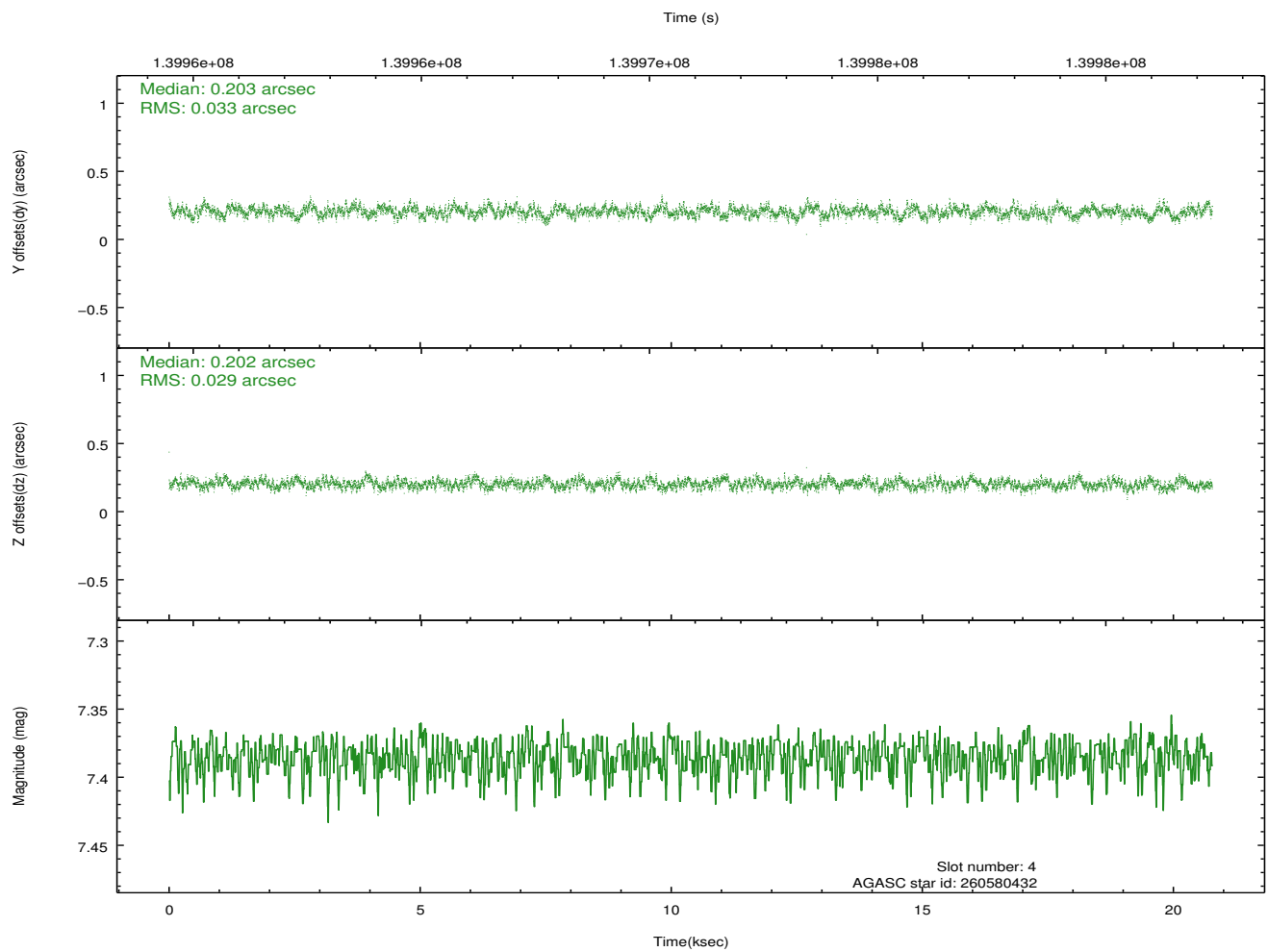
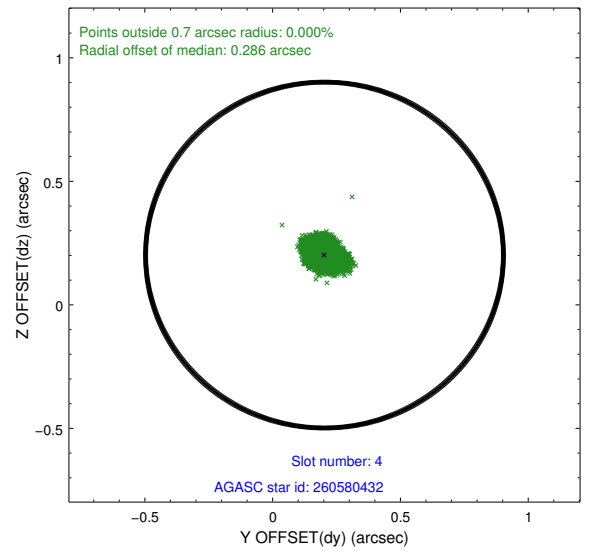
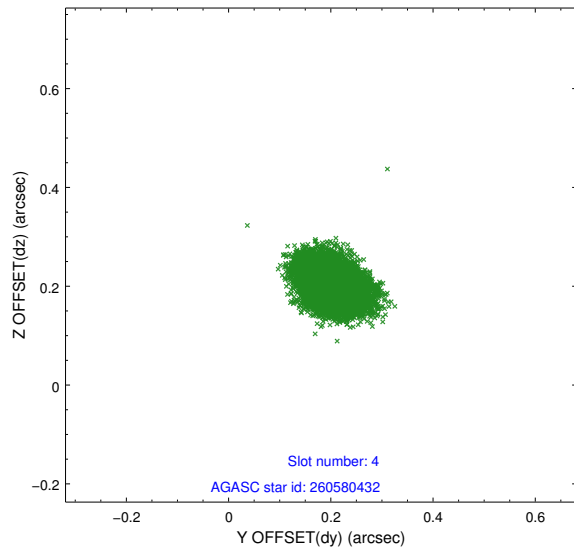
slot	status	id	mag	n_pts	med_dy	med_dz	dr1	dr2	ra	dec	mean_y	mean_z
0	FID	ACIS-S-2	7.11	5068	-0.007	-0.001	0.008	0.014	0.000000	0.000000	-755.61	-1728.17
1	FID	ACIS-S-4	7.20	5067	-0.007	0.000	0.007	0.011	0.000000	0.000000	2157.58	180.14
2	FID	ACIS-S-6	7.35	5067	-0.014	0.009	0.008	0.013	0.000000	0.000000	406.58	817.74
3	GUIDE	331222504	7.05	10135	-0.074	-0.189	0.060	0.092	182.064211	30.275360	-654.61	-1288.06
4	GUIDE	260580432	7.38	10136	0.203	0.202	0.046	0.076	182.615916	29.068189	2412.70	2241.81
5	GUIDE	260576048	7.87	10135	0.088	-0.081	0.052	0.082	182.340266	29.460601	1557.53	822.77
6	GUIDE	331223656	9.35	10129	-0.095	0.053	0.091	0.144	182.518902	30.395784	-1688.20	-231.69
7	GUIDE	260571904	9.47	10125	-0.114	0.014	0.122	0.196	183.167466	29.996113	-1348.31	2223.08

2.4 Star Slots

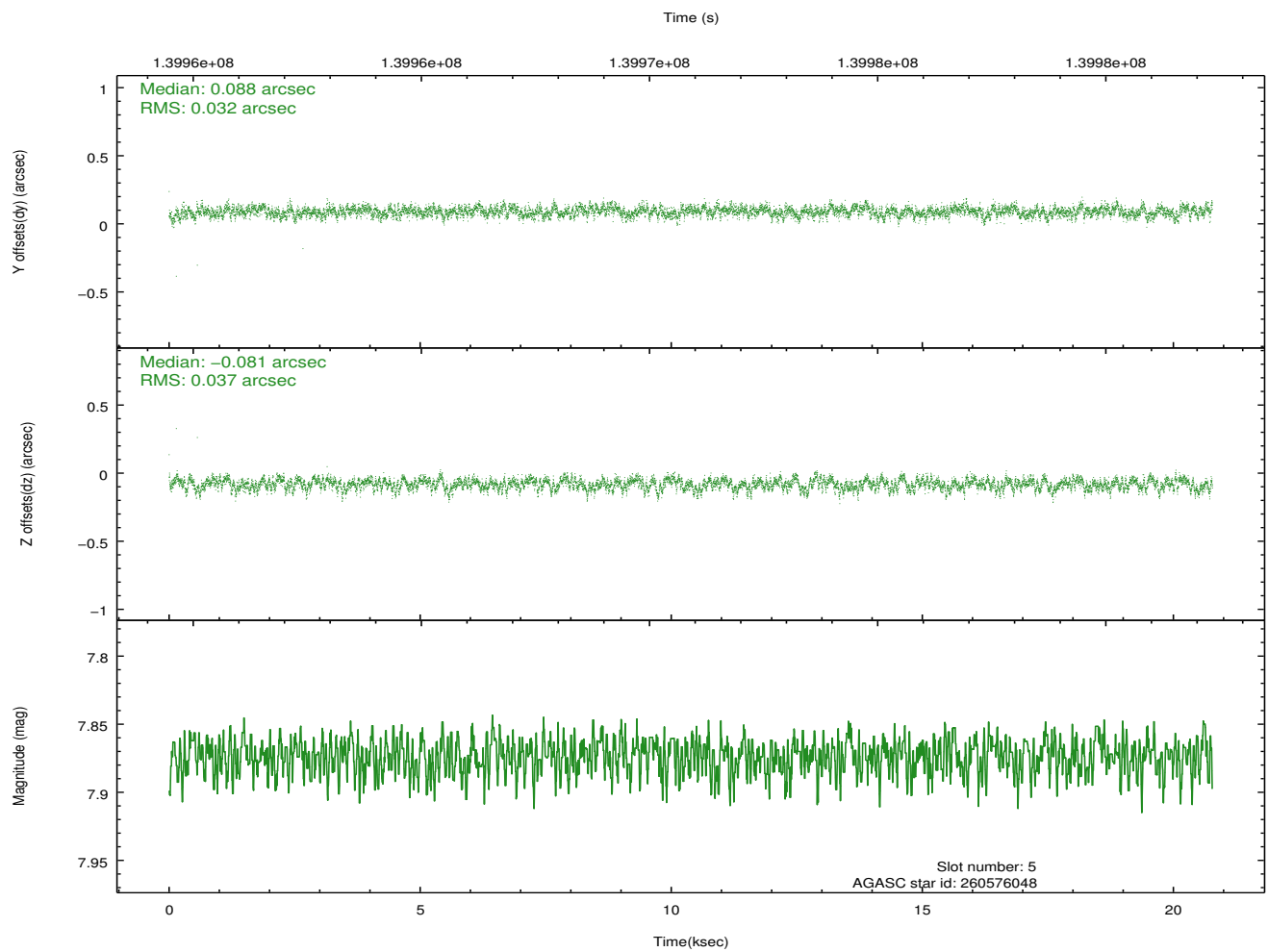
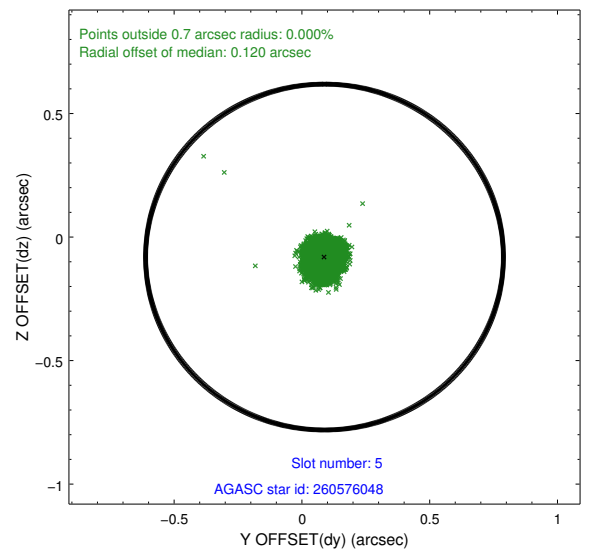
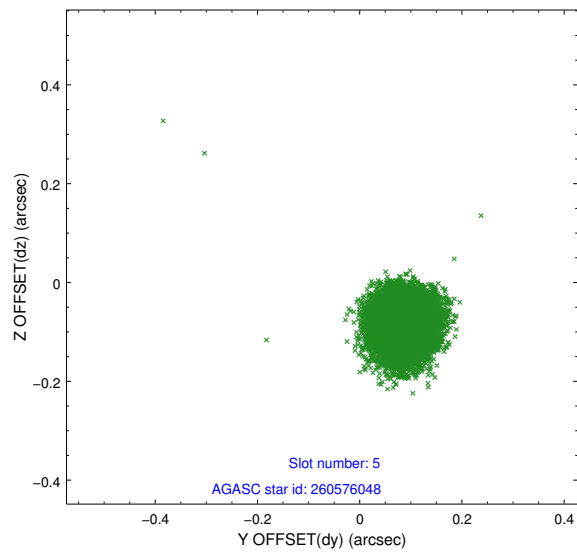
2.4.1 Slot 3



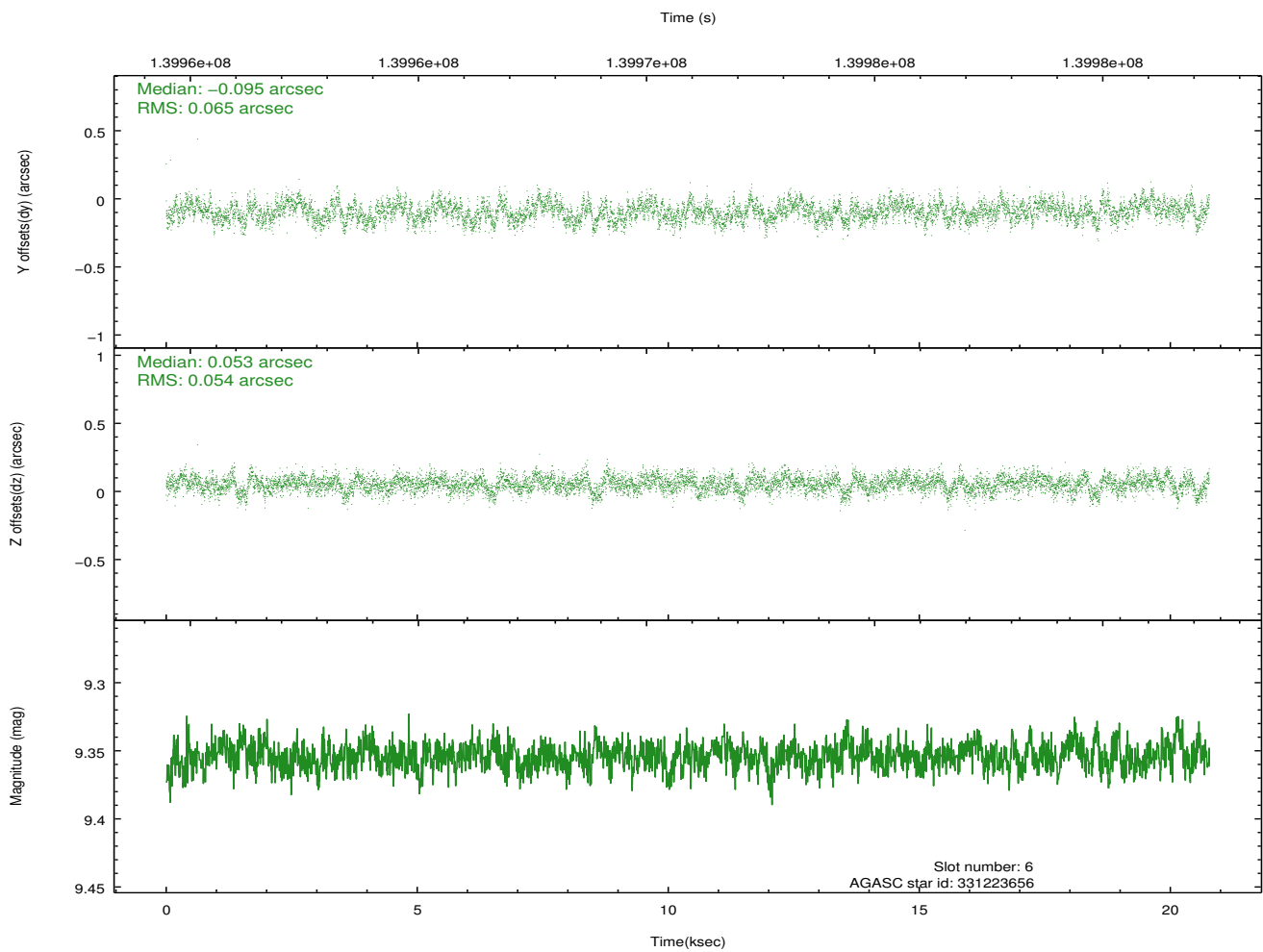
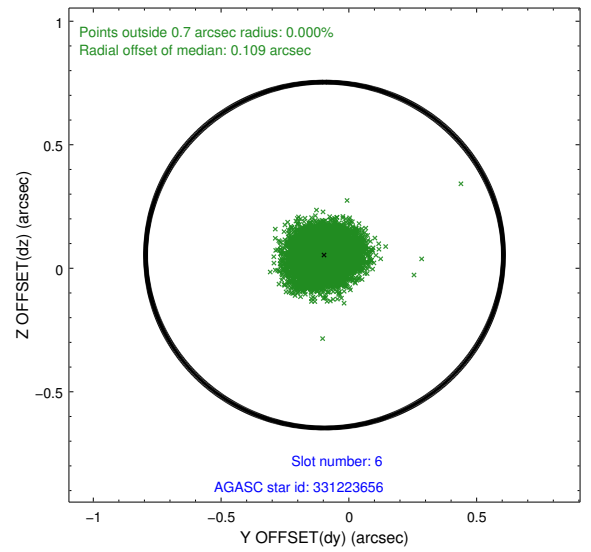
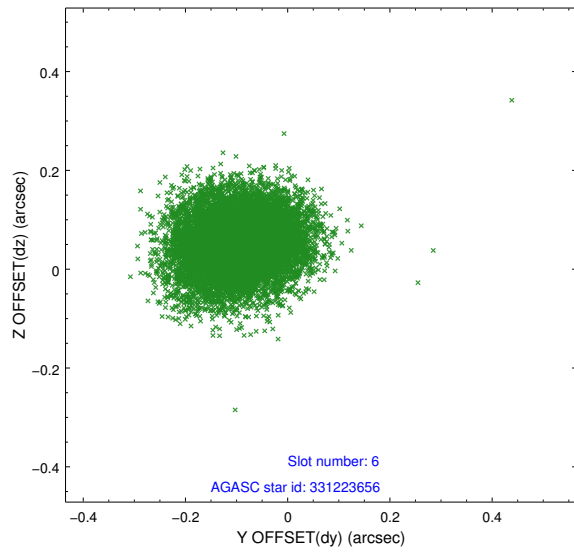
2.4.2 Slot 4



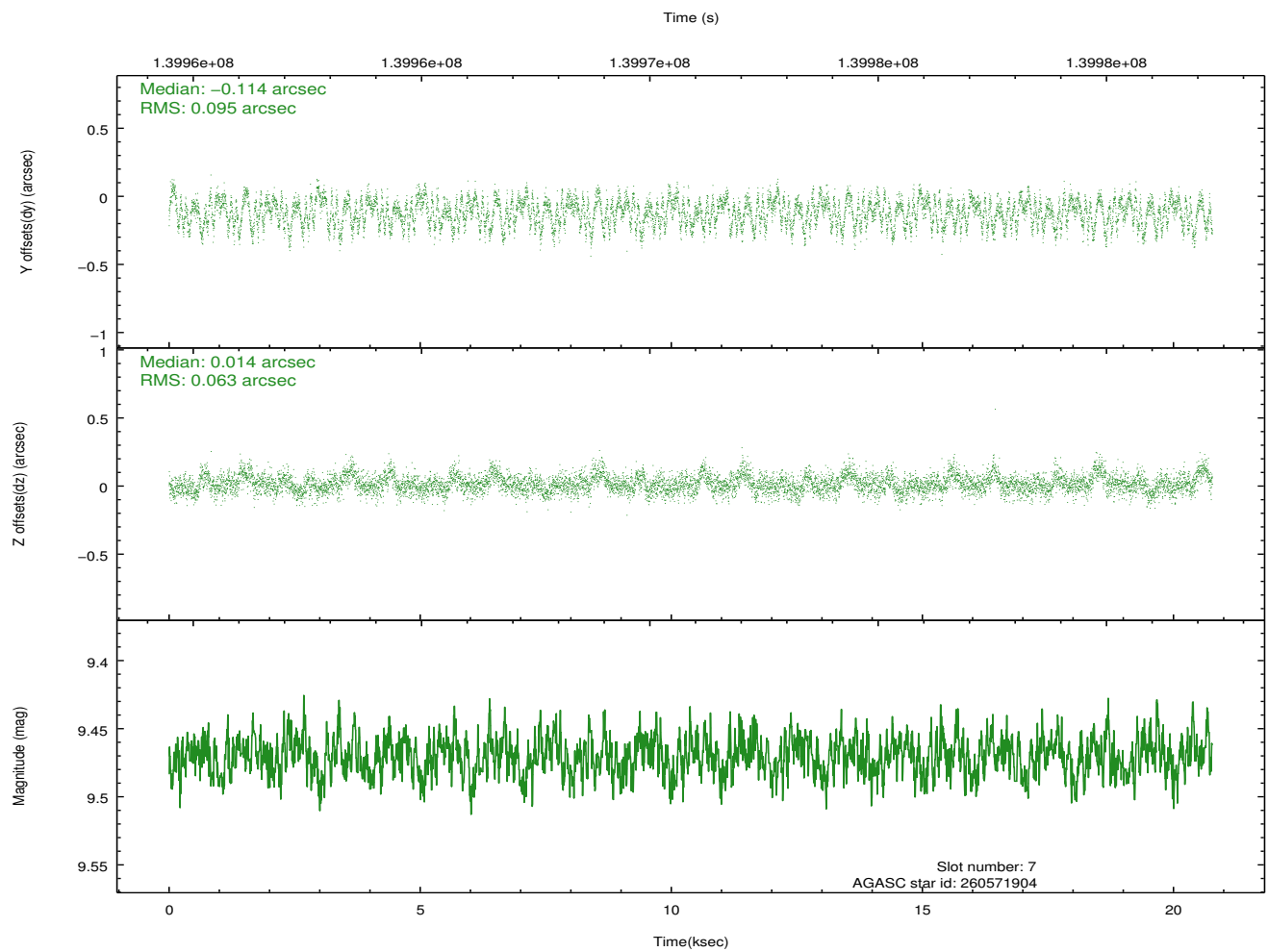
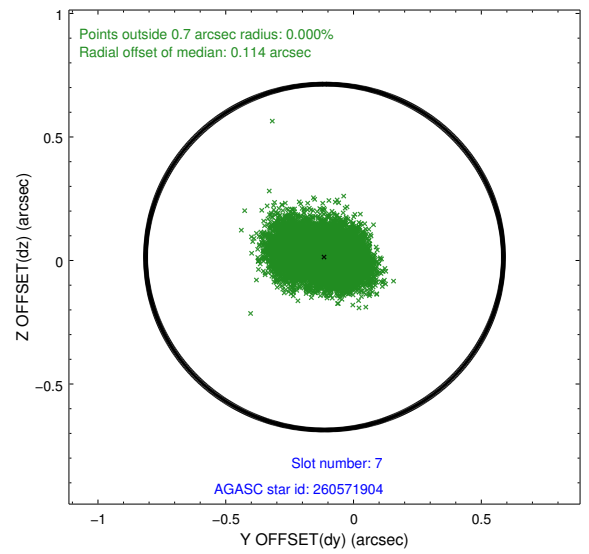
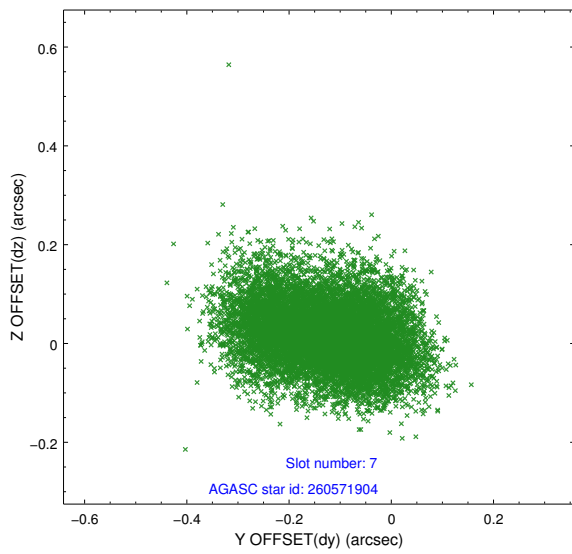
2.4.3 Slot 5



2.4.4 Slot 6

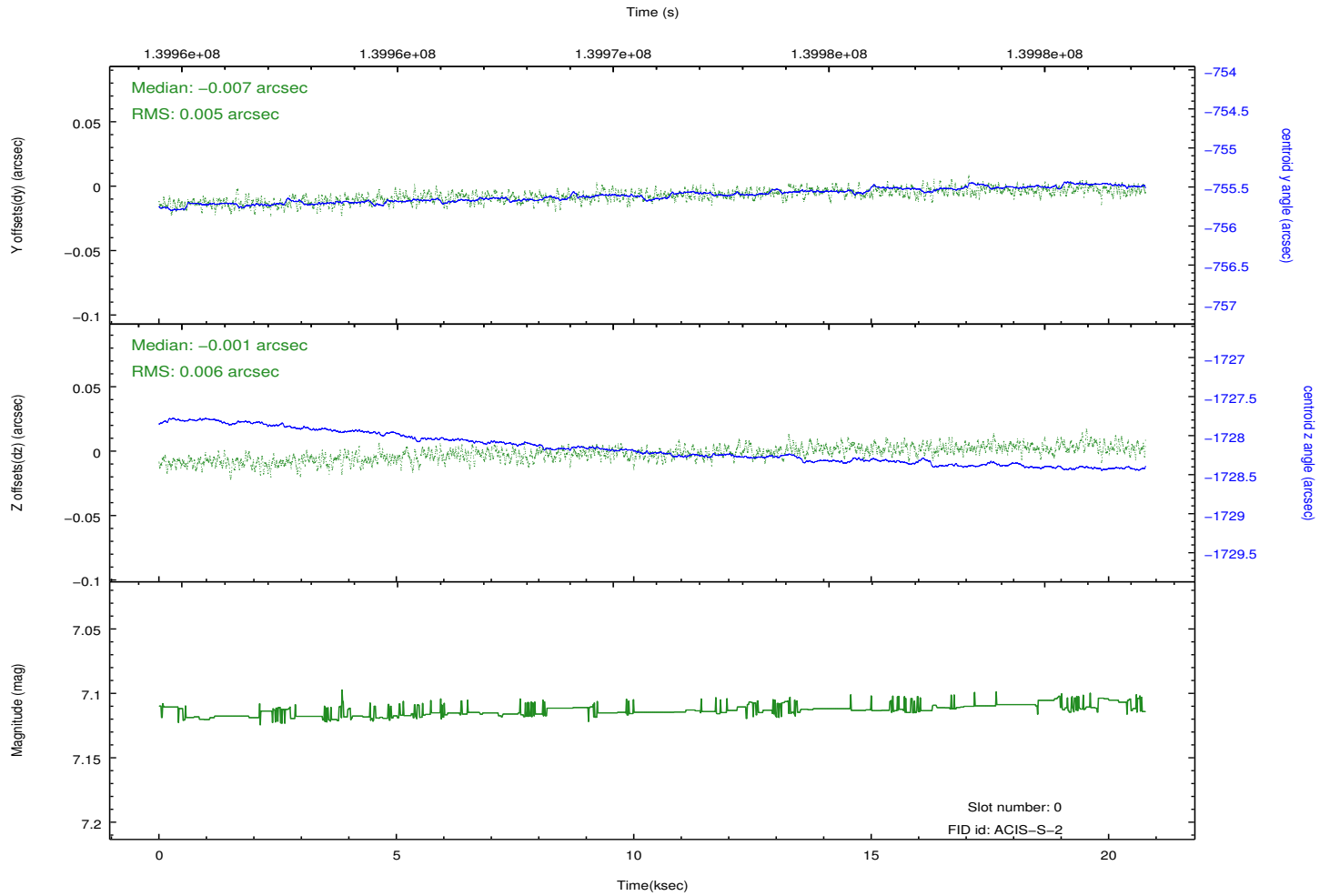
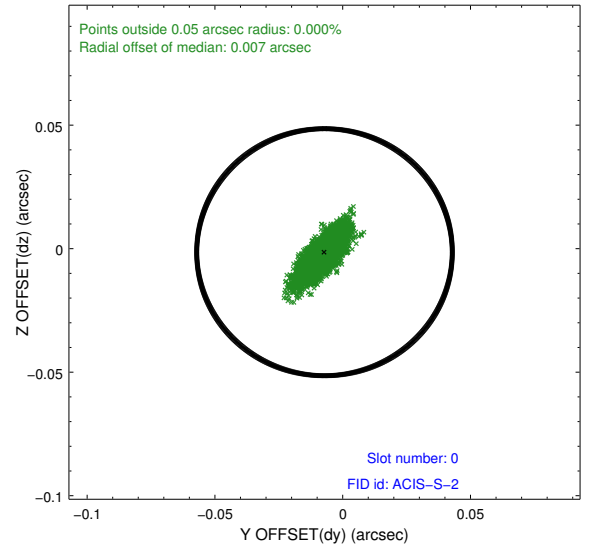
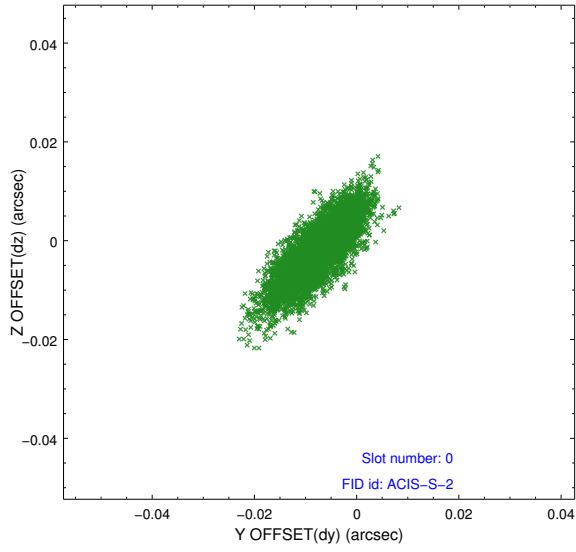


2.4.5 Slot 7

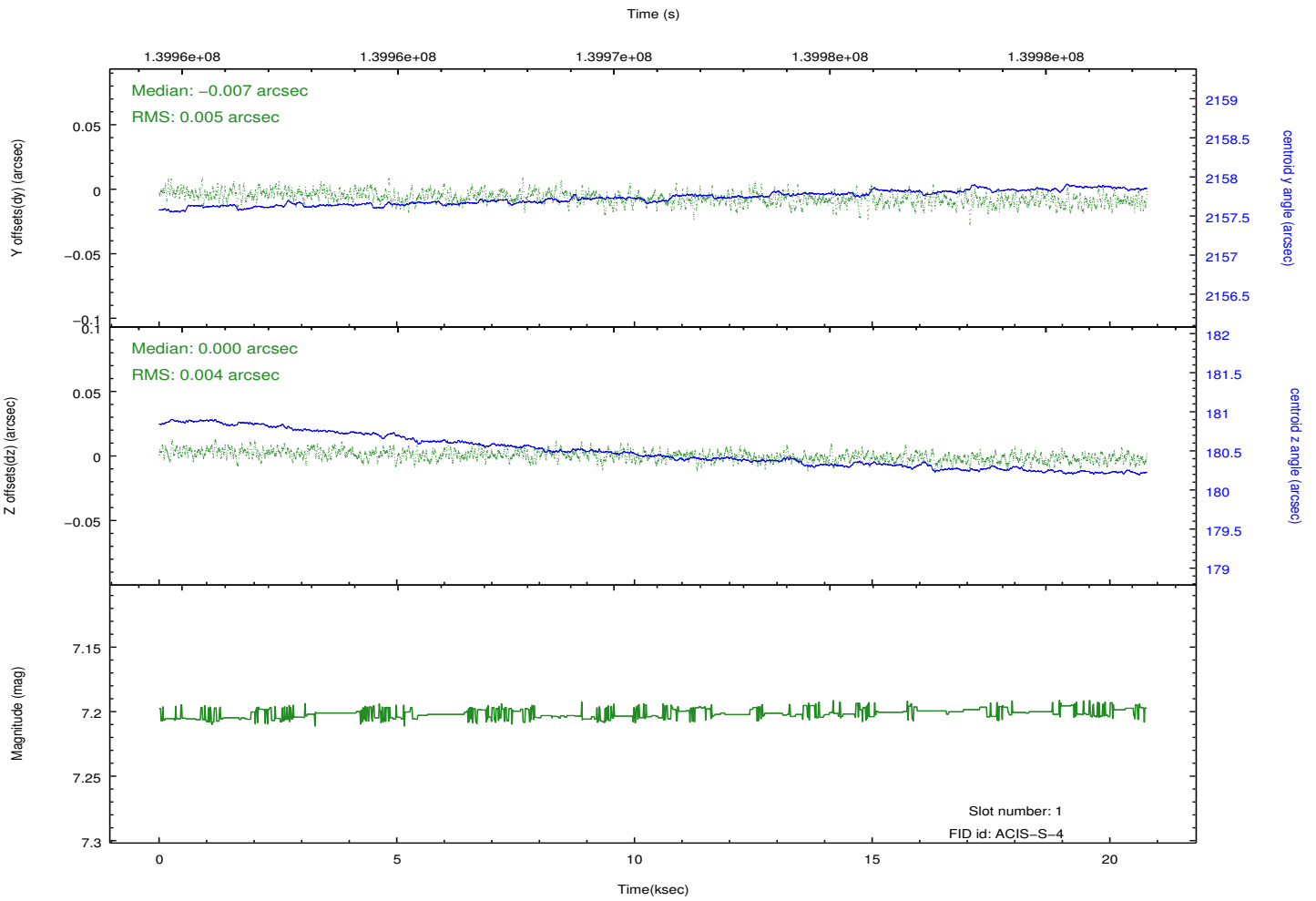
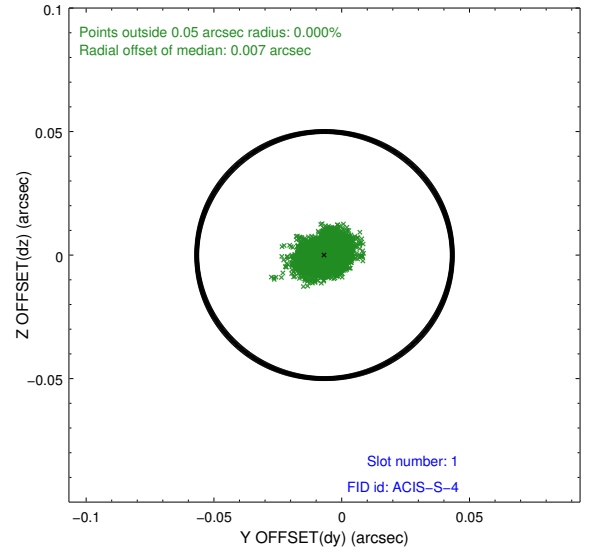
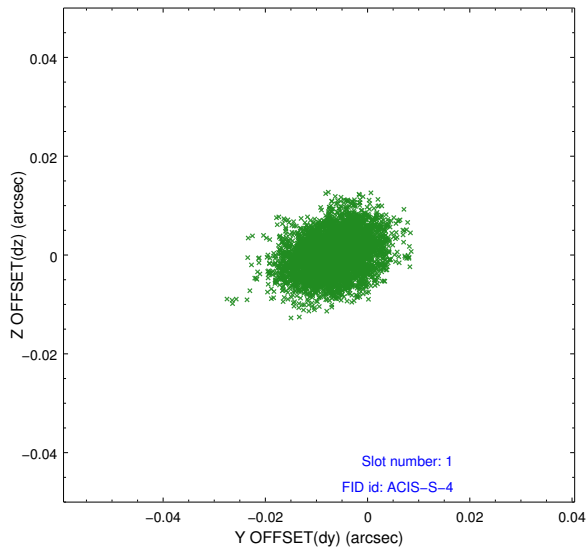


2.5 FID Slots

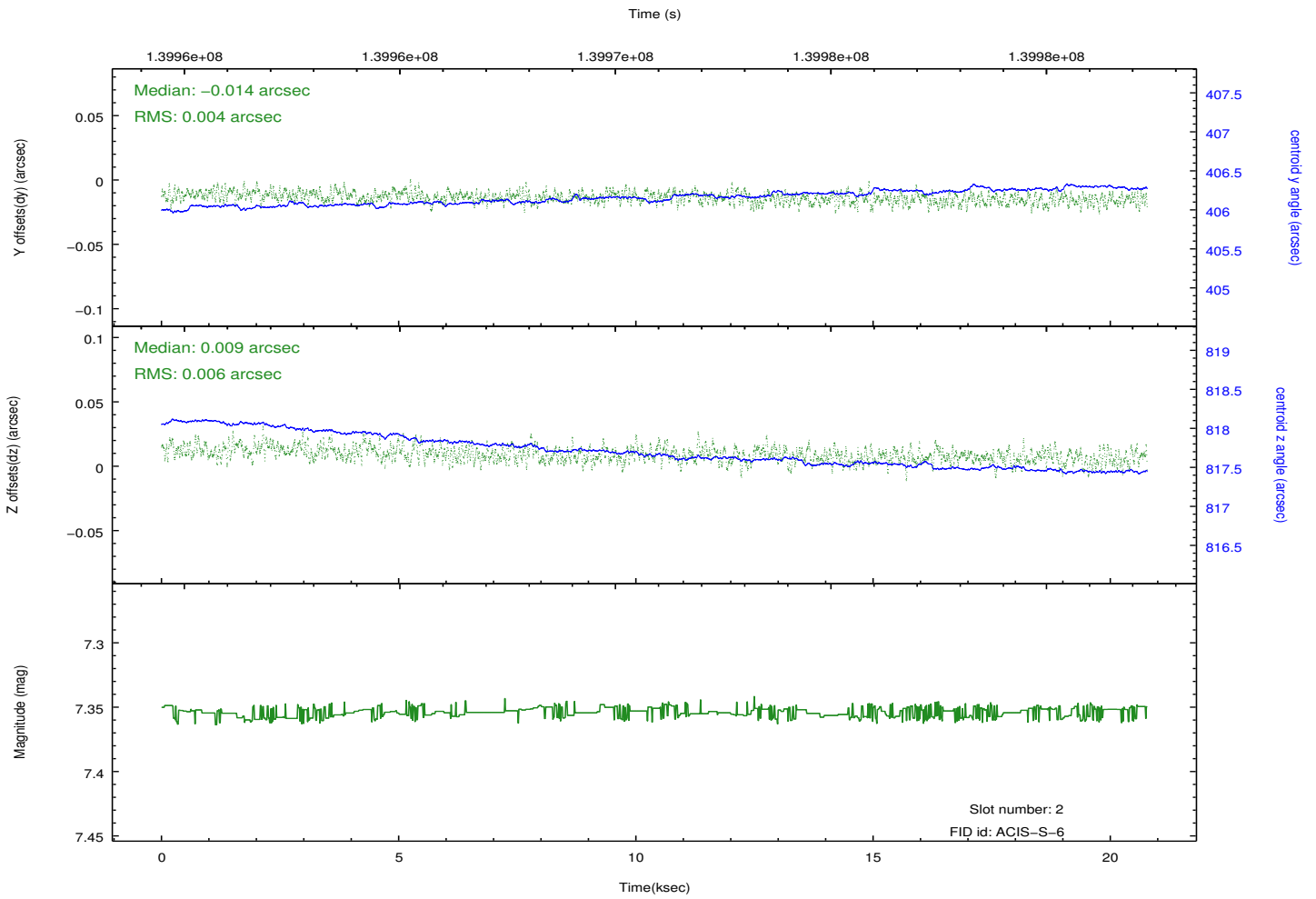
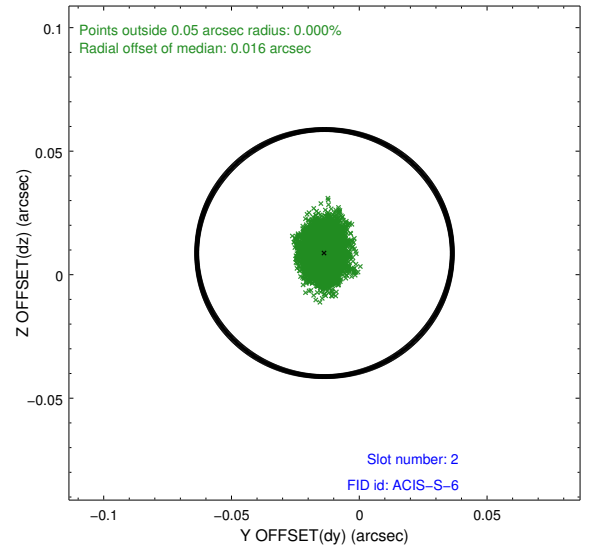
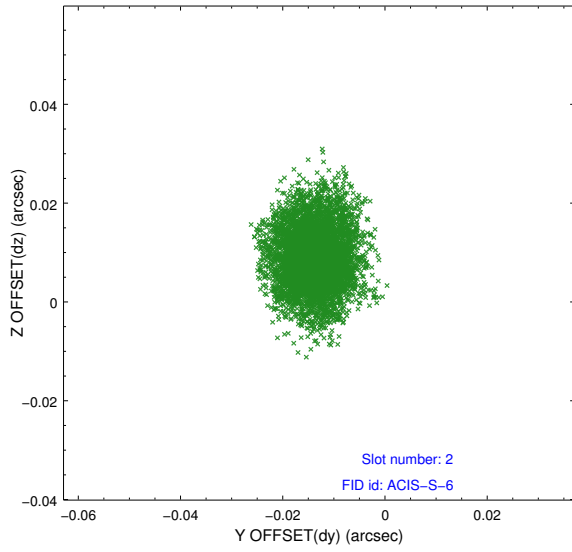
2.5.1 Slot 0



2.5.2 Slot 1



2.5.3 Slot 2



A Summary

A.1 Status

V&V Scientist	Jen Lauer
V&V Date (YYYY-MM-DD)	2012.10.18
V&V Edition	1
V&V Disposition and Status	OK
V&V Charge Time	19.961

A.2 Comments

Monitor constraint met.