

# V&V Reference Report

## L2 ASCDS Version : 8.4.5

Observation 3141 - L2 Version 4  
Chandra X-Ray Center

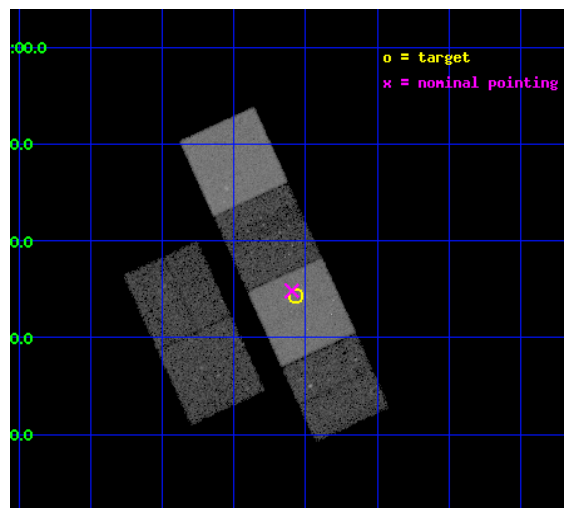
L2 Processing Date : Oct 17 2012

## Contents

<b>1</b>	<b>Front</b>	<b>2</b>
<b>2</b>	<b>OBI</b>	<b>3</b>
2.1	OBI . . . . .	3
2.1.1	Images . . . . .	3
2.1.2	Bias . . . . .	3
2.1.3	Parameters . . . . .	4
2.1.4	Events . . . . .	4
2.2	Compared Parameters . . . . .	5
2.3	Aspect . . . . .	6
2.4	Star Slots . . . . .	9
2.4.1	Slot 3 . . . . .	9
2.4.2	Slot 4 . . . . .	10
2.4.3	Slot 5 . . . . .	11
2.4.4	Slot 6 . . . . .	12
2.4.5	Slot 7 . . . . .	13
2.5	FID Slots . . . . .	14
2.5.1	Slot 0 . . . . .	14
2.5.2	Slot 1 . . . . .	15
2.5.3	Slot 2 . . . . .	16
<b>A</b>	<b>Summary</b>	<b>17</b>
A.1	Status . . . . .	17
A.2	Comments . . . . .	17

# 1 Front

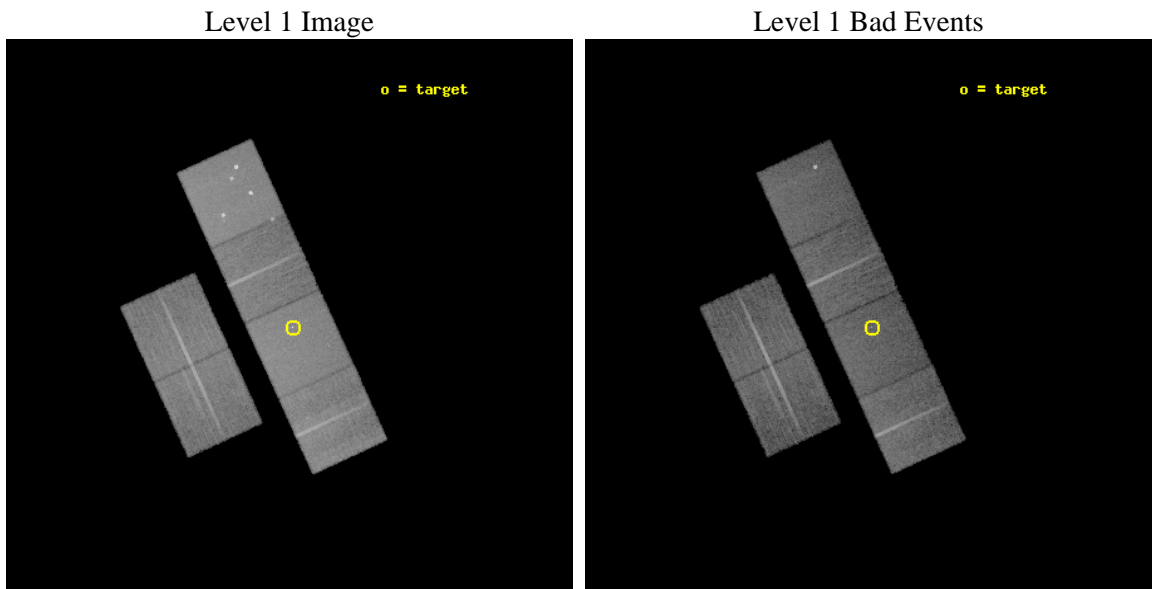
seq_num	700580	Sequence number
obs_id	3141	Observation id
title	PROBING THE X-RAY EMISSION OF HIGH LUMINOSITY EMISSION LINE GALAXIES: QUASAR-2s AND THE STARBURST-AGN CONNECTION	Proposal title
observer	Prof. Paolo Coppi	Principal investigator
object	QUEST 1220-0025	Source name
dtcycle	0	&#160
cycle	P	events from which exps? Prim/Second/Both
ra_targ	185.018333	Observer's specified target RA [deg]
dec_targ	-0.4275	Observer's specified target Dec [deg]
ra_nom	185.02387335404	Nominal RA [deg]
dec_nom	-0.41954235677666	Nominal Dec [deg]
roll_nom	65.415567525785	Nominal Roll [deg]
revision	4	Processing version of data
ontime	19929.599925756	Sum of GTIs [s]
livetime	19677.239331332	Livetime [s]
ontime2	19926.358965516	Sum of GTIs [s]
ontime3	19929.599925756	Sum of GTIs [s]
ontime5	19929.599925756	Sum of GTIs [s]
ontime6	19926.358935595	Sum of GTIs [s]
ontime7	19929.599925756	Sum of GTIs [s]
ontime8	19929.599925756	Sum of GTIs [s]
l2events	202973	Number of level 2 events



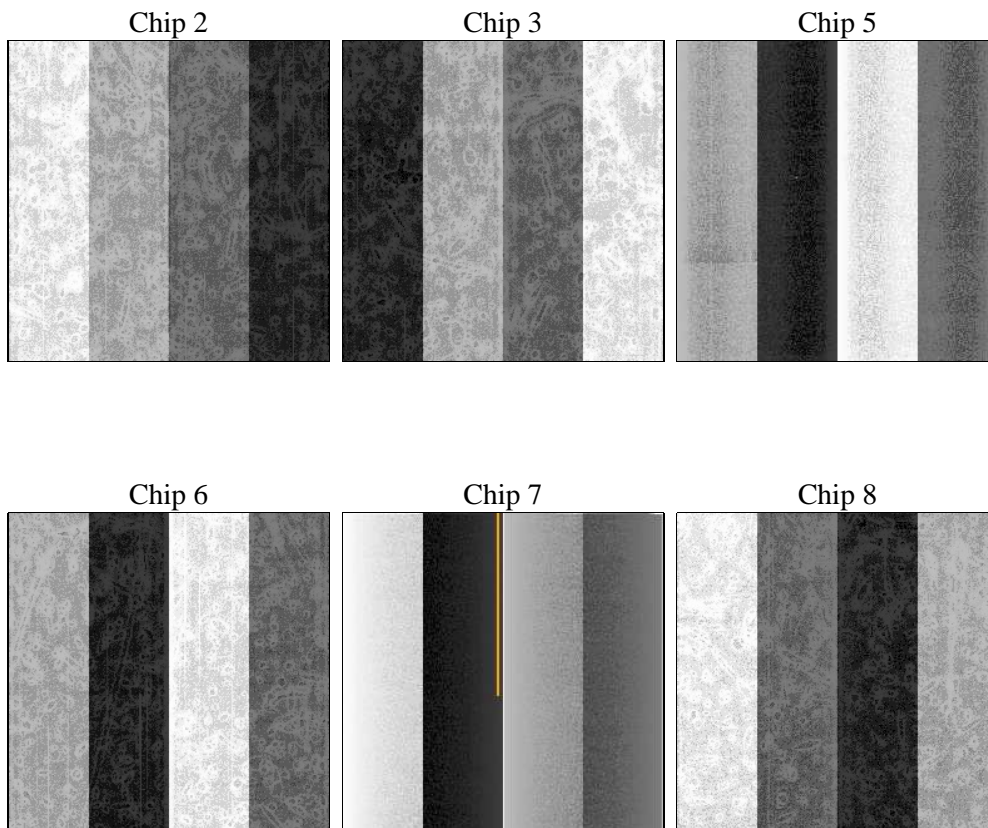
## 2 OBI

### 2.1 OBI

#### 2.1.1 Images



#### 2.1.2 Bias



### 2.1.3 Parameters

obi_num	2	Obi number	sched_exp_time	20000.000000	[s] Scheduled observation exposure time
ascdsver	8.4.5	Processing system revision	ontime	19929.599925756	Sum of GTIs [s]
caldbver	4.5.2	&#160	ontime2	19926.358965516	Sum of GTIs [s]
date	2012-10-17T11:59:45	Date and time of file creation	ontime3	19929.599925756	Sum of GTIs [s]
revision	5	Processing version of data	ontime5	19929.599925756	Sum of GTIs [s]
			ontime6	19926.358935595	Sum of GTIs [s]
			ontime7	19929.599925756	Sum of GTIs [s]
			ontime8	19929.599925756	Sum of GTIs [s]
			l1events	886659	Number of level 1 events

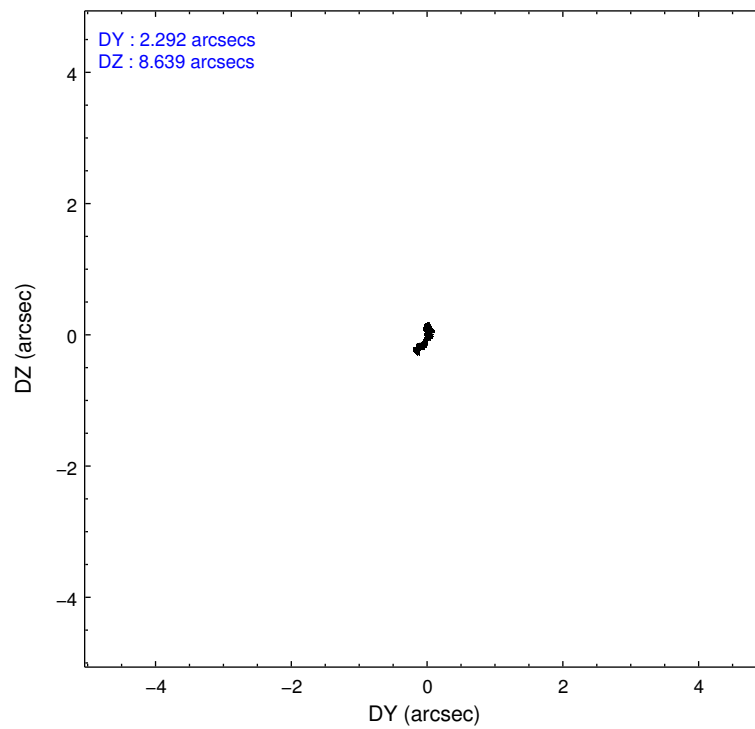
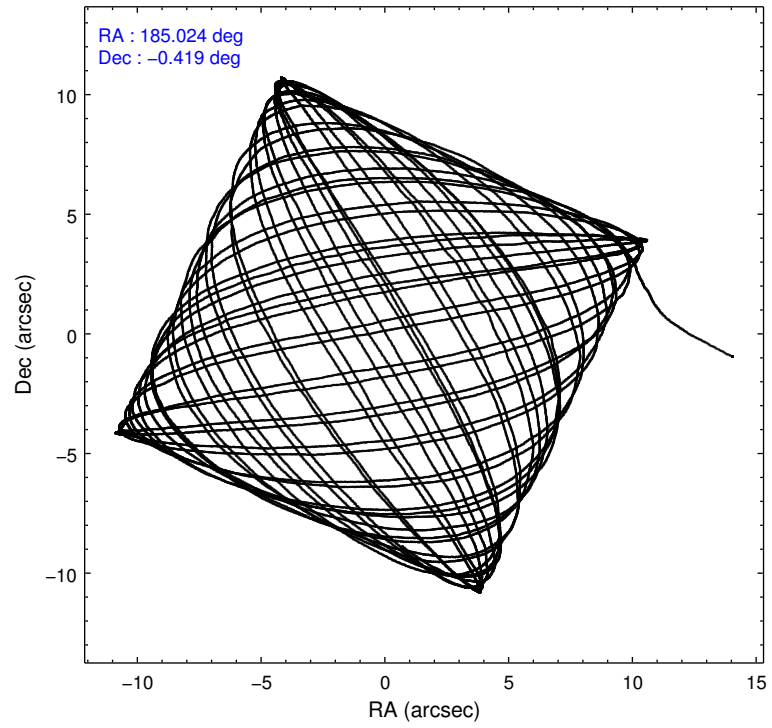
### 2.1.4 Events

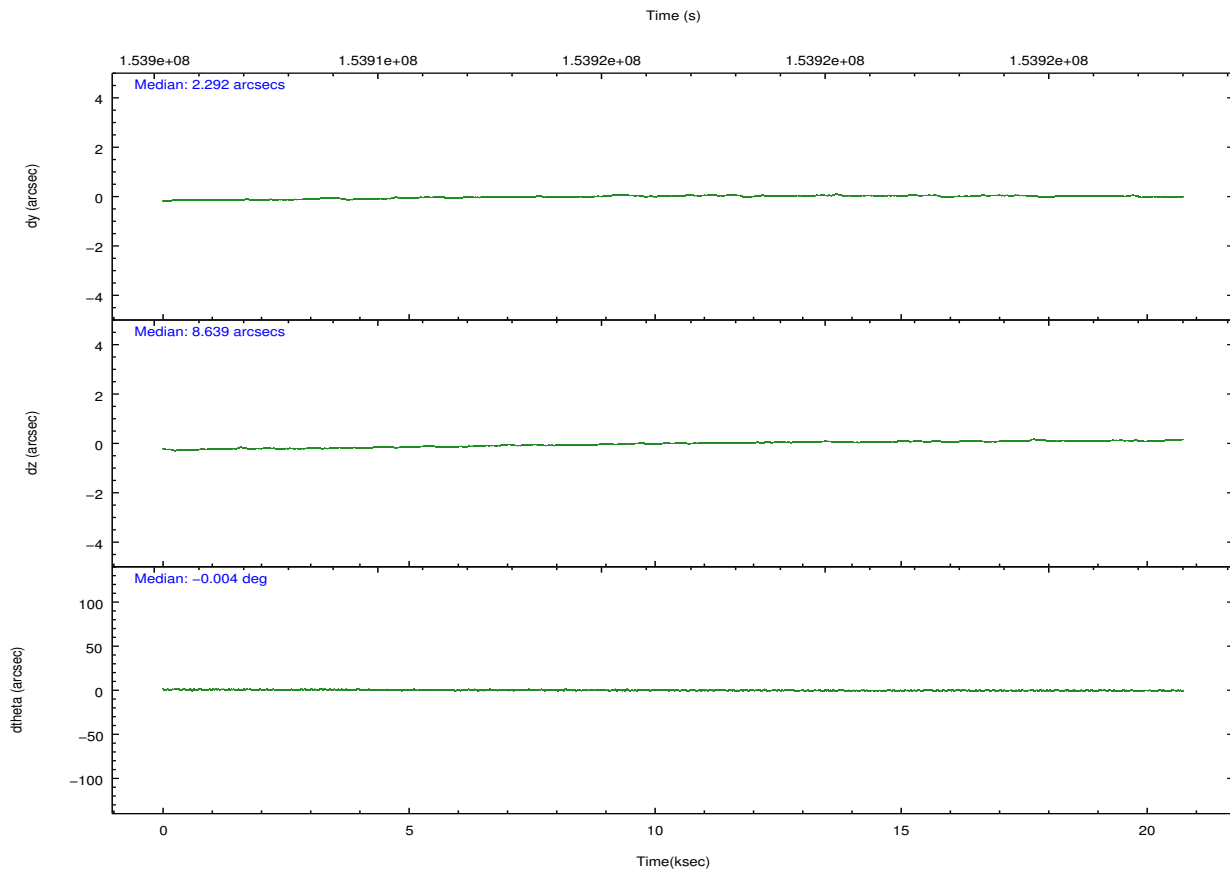
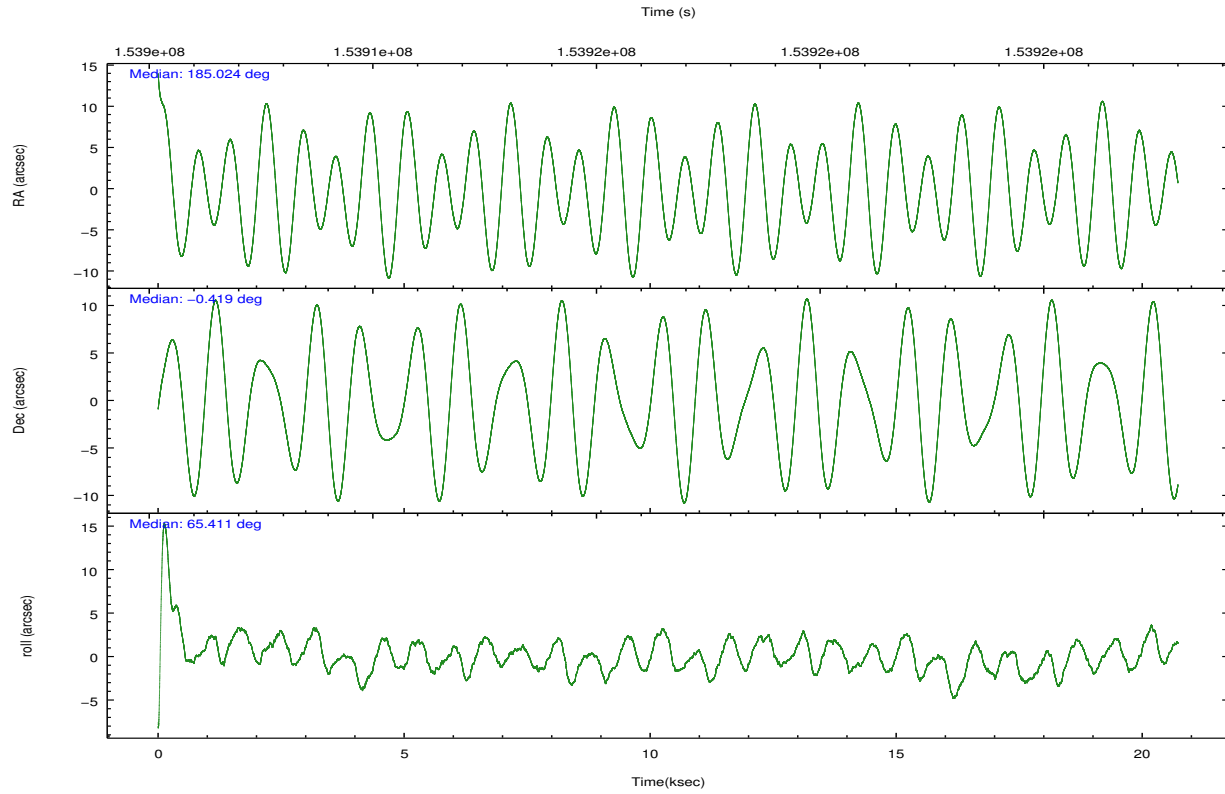
	ccd 2	ccd 3	ccd 5	ccd 6	ccd 7	ccd 8		ccd 2	ccd 3	ccd 5	ccd 6	ccd 7	ccd 8
level 1 events	127123	120166	191760	124347	167100	156163	grade 0 events	6927	6708	16404	6451	7410	11994
rejected events	111631	104929	100017	108591	95564	121398		5%	5%	8%	5%	4%	7%
rejected %	87%	87%	52%	87%	57%	77%	grade 1 events	72	62	226	52	169	97
								0%	0%	0%	0%	0%	0%
							grade 2 events	3196	3000	25628	3338	14130	7264
								2%	2%	13%	2%	8%	4%
							grade 3 events	1397	1459	3538	1542	6445	3800
								1%	1%	1%	1%	3%	2%
							grade 4 events	1406	1450	3401	1440	6338	3537
								1%	1%	1%	1%	3%	2%
							grade 5 events	4714	5170	13567	5532	15699	7125
								3%	4%	7%	4%	9%	4%
							grade 6 events	2572	2627	42801	2989	37243	8179
								2%	2%	22%	2%	22%	5%
							grade 7 events	106839	99690	86195	103003	79666	114167
								84%	82%	44%	82%	47%	73%

## 2.2 Compared Parameters

Parameter	Planned	Actual	Parameter	Planned	Actual
Instrument	ACIS	ACIS	Obspar format version number	7	7
Detector	ACIS-235678	ACIS-235678	Obspar file type	PREDICTED	ACTUAL
Grating	NONE	NONE	Obspar update status	NONE	UPDATED
Data mode	FAINT	FAINT	Number of optional ACIS chips dropped	0	0
Observation mode	POINTING	POINTING	On-chip summing requested	N	N
[deg] Pointing RA	185.026767	185.0238733540366	Subarray requested	NONE	NONE
[deg] Pointing Dec	-0.446617	-0.4195423567766638	Alternating exposures requested	N	N
[deg] Pointing Roll	65.258981	65.41556752578492	[s] Primary exposure time	0.000000	3.2
[mm] SIM focus pos	-0.684267	-0.6828225247311905			
[mm] SIM defocus	0	0.001444936568705701			
[mm] SIM translation stage pos	-190.132523	-190.1425803651734			
[mm] SIM translation stage offset	0	0.01005778216563158			
[s] Observation start time (MET)	153906966.184000	153905732.86876			
Observation start date	2002-11-17T07:55:02	2002-11-17T07:35:32			
[s] Observation end time (MET)	153926966.184000	153927451.59466			
Observation end date	2002-11-17T13:28:22	2002-11-17T13:37:31			
Read mode	TIMED	TIMED			

## 2.3 Aspect



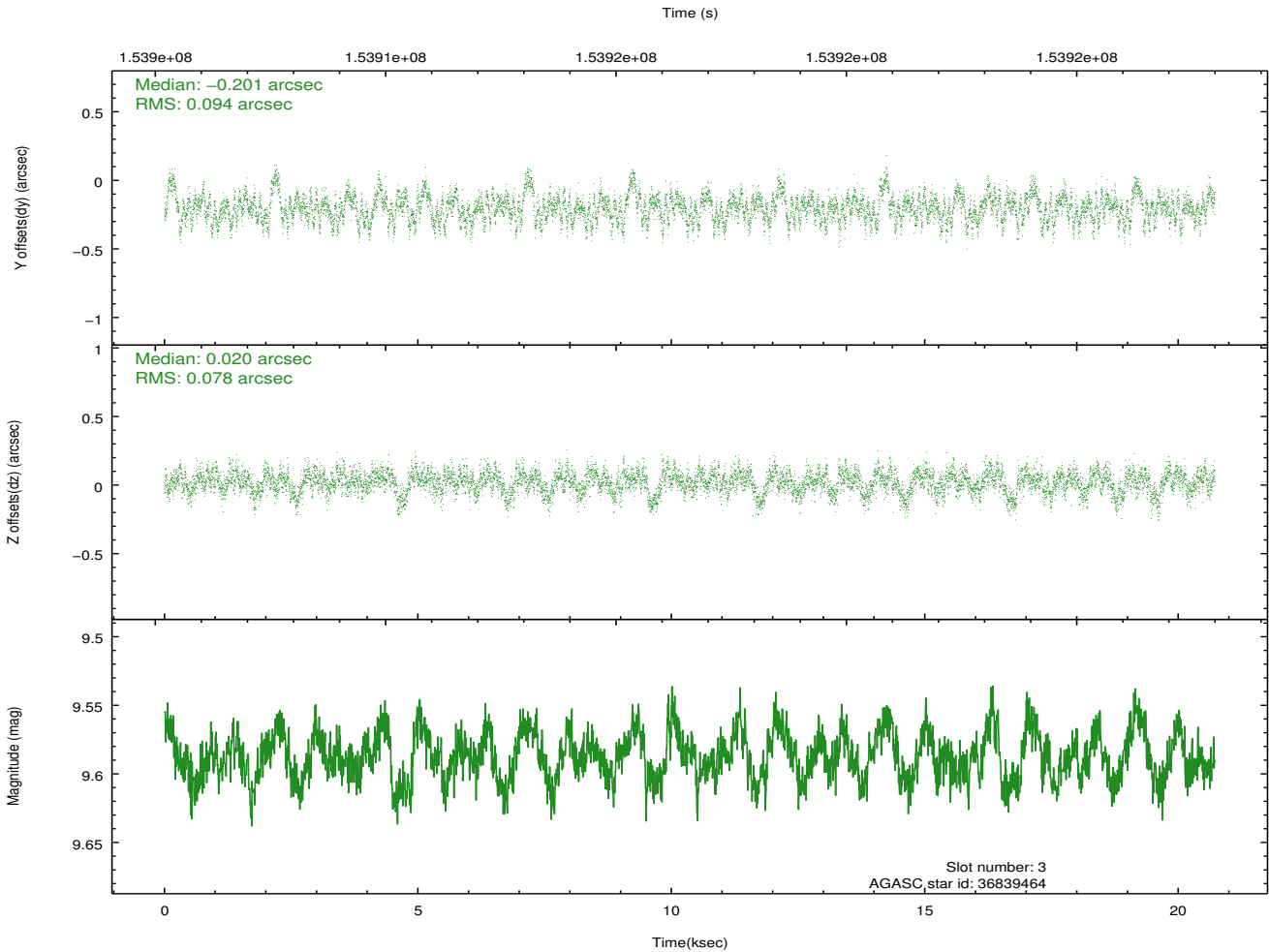
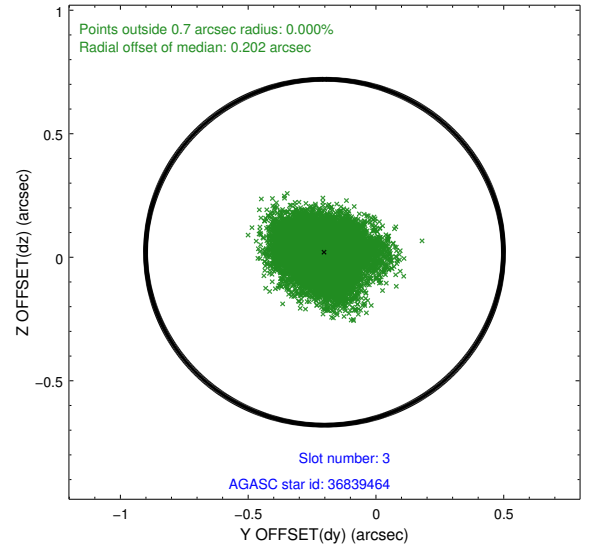
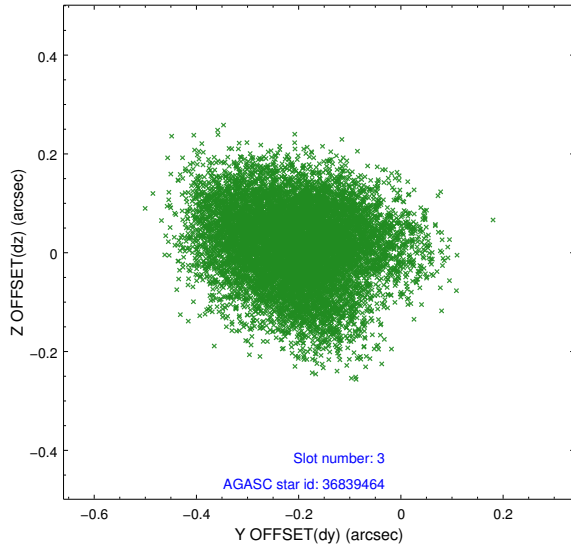


### Slot Statistics

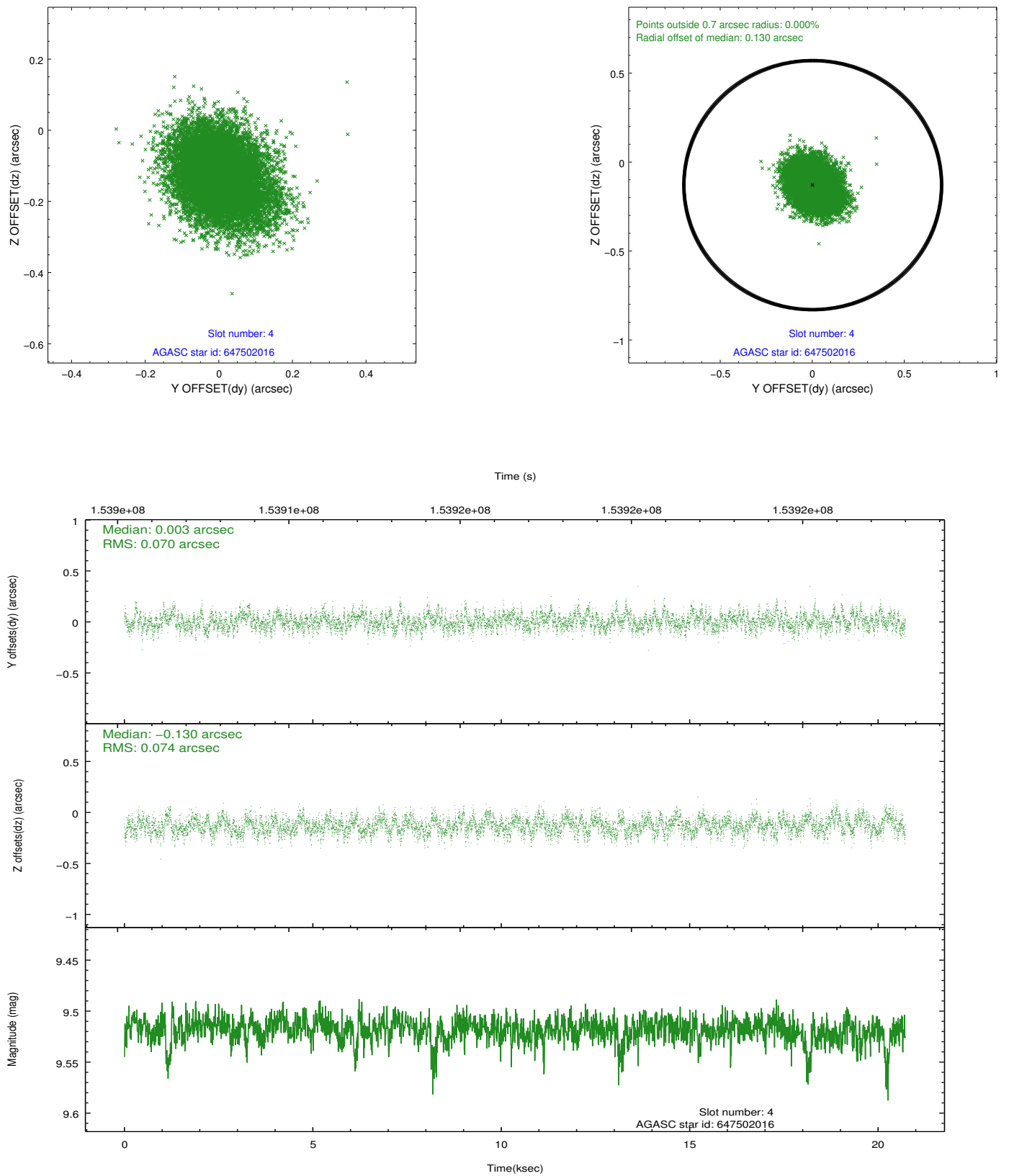
slot	status	id	mag	n_pts	med_dy	med_dz	dr1	dr2	ra	dec	mean_y	mean_z
0	FID	ACIS-S-2	7.11	5055	-0.028	-0.017	0.007	0.011	0.000000	0.000000	-754.93	-1729.78
1	FID	ACIS-S-4	7.20	5055	0.001	0.018	0.005	0.010	0.000000	0.000000	2158.30	178.55
2	FID	ACIS-S-5	7.24	5055	-0.005	0.008	0.007	0.011	0.000000	0.000000	-1807.52	172.43
3	GUIDE	36839464	9.59	10104	-0.201	0.020	0.131	0.209	184.715764	0.010012	1023.90	1704.99
4	GUIDE	647502016	9.52	10105	0.003	-0.130	0.108	0.175	184.706329	-0.112412	609.37	1551.54
5	GUIDE	647627424	9.86	10101	0.108	0.154	0.099	0.160	185.169664	-1.125423	-2004.02	-1489.70
6	GUIDE	647627504	9.47	10106	-0.113	0.061	0.091	0.147	185.704494	-0.249735	1664.43	-1919.15
7	GUIDE	647500448	9.49	10106	0.210	-0.103	0.099	0.179	184.807560	-0.597958	-824.91	488.22

## 2.4 Star Slots

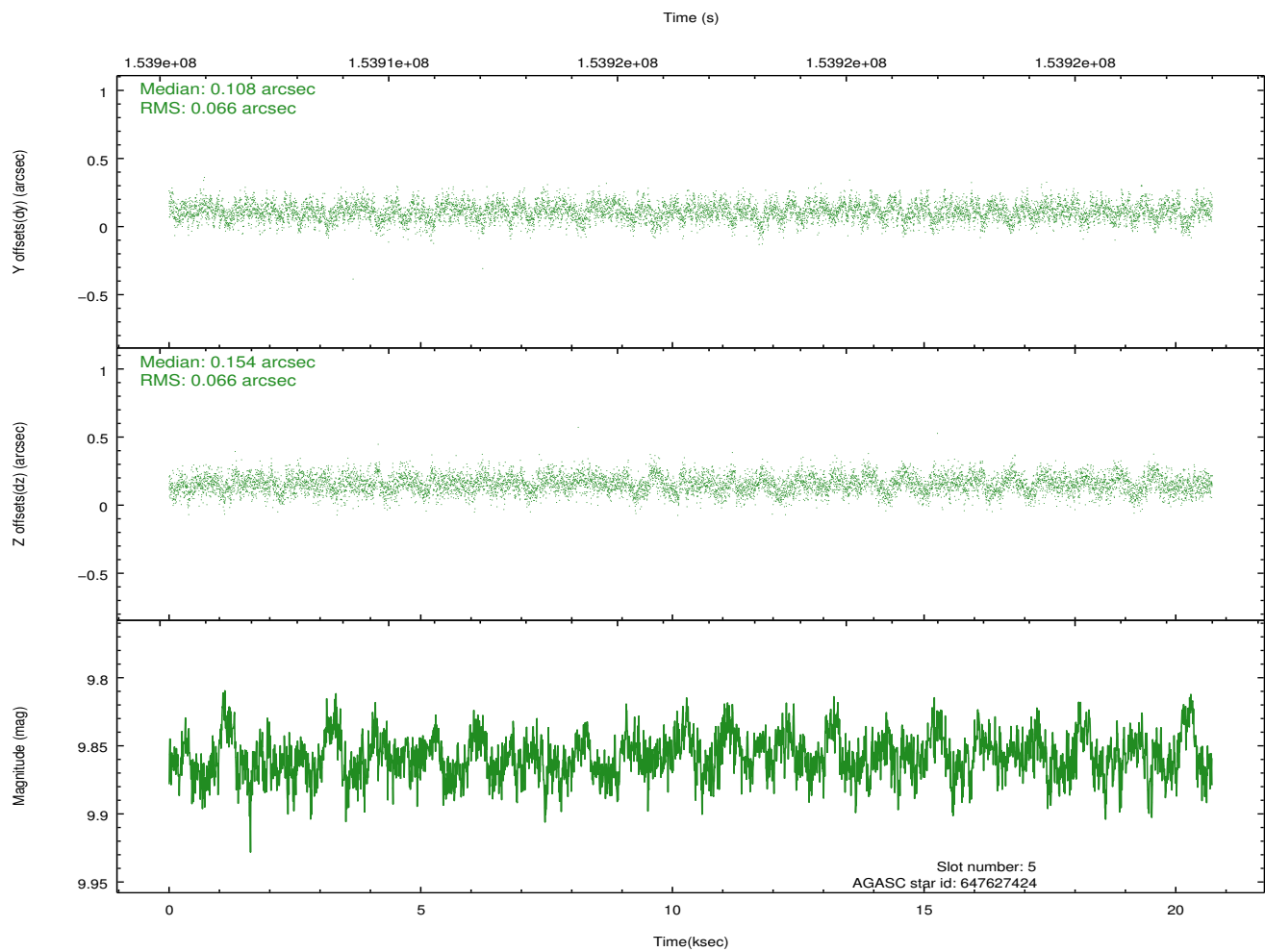
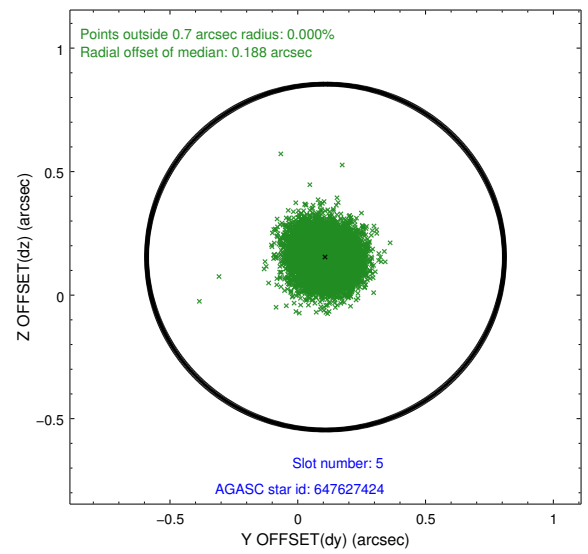
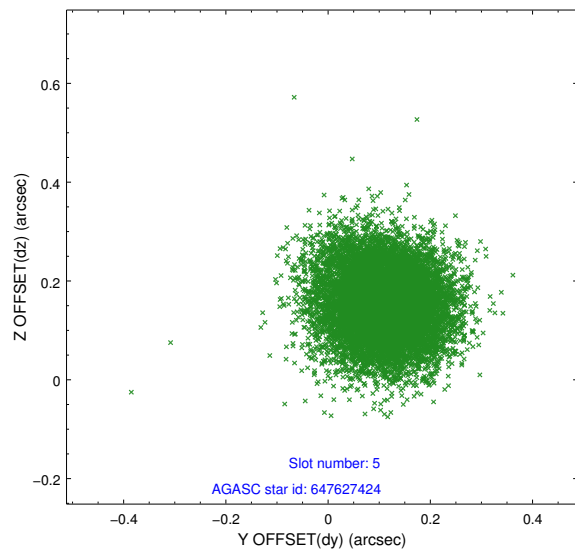
### 2.4.1 Slot 3



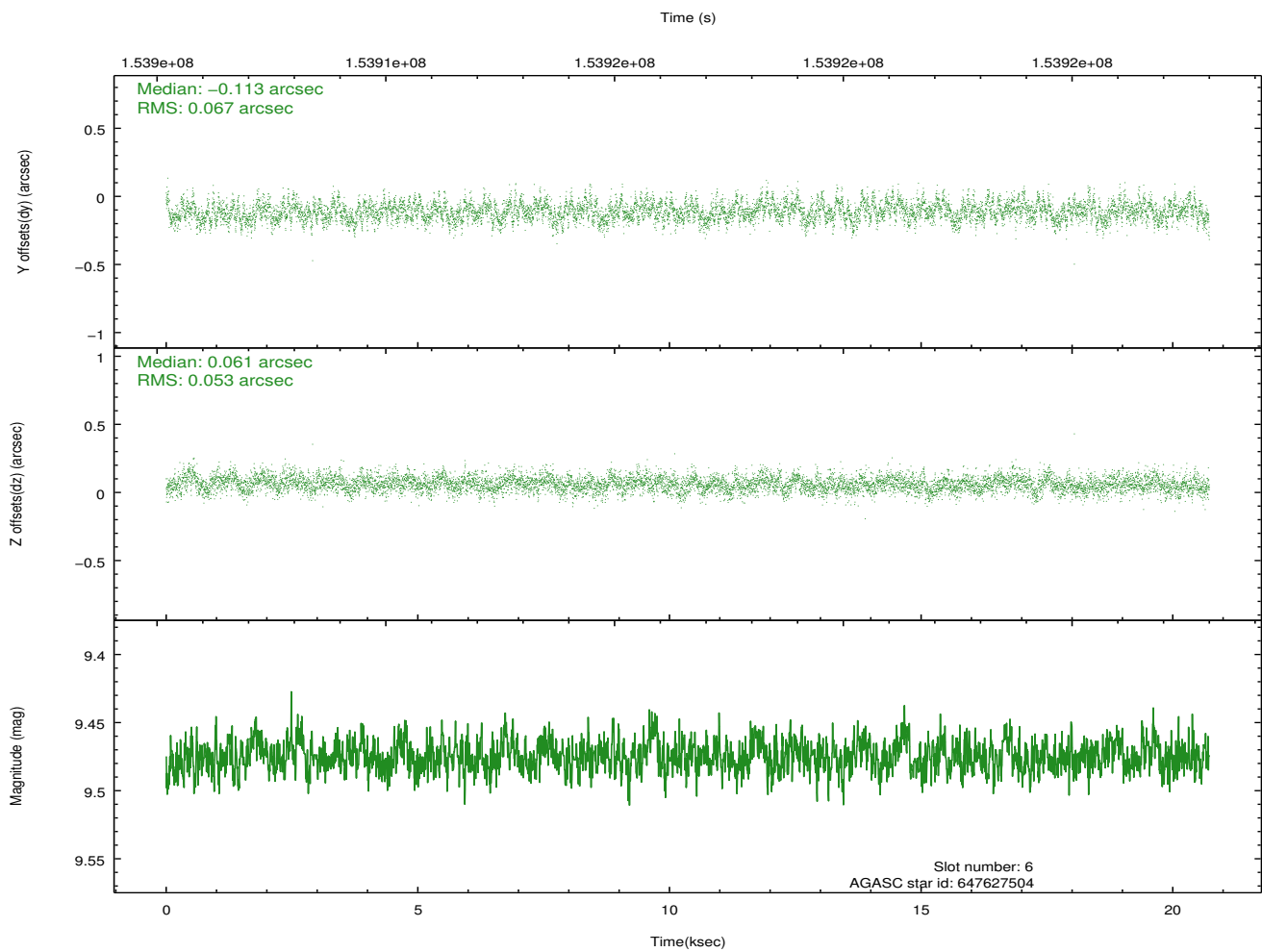
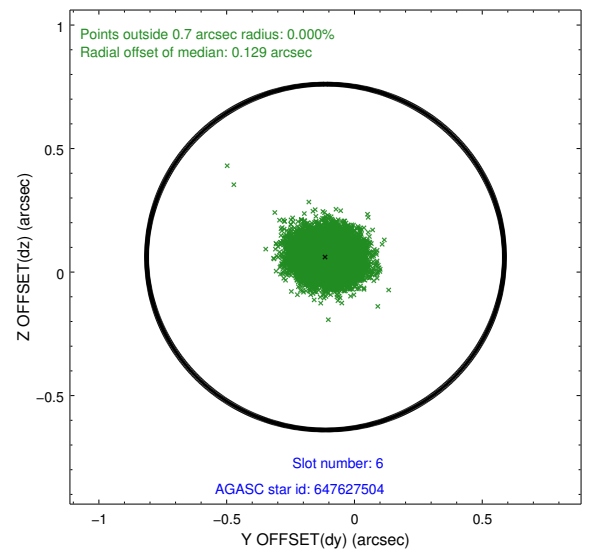
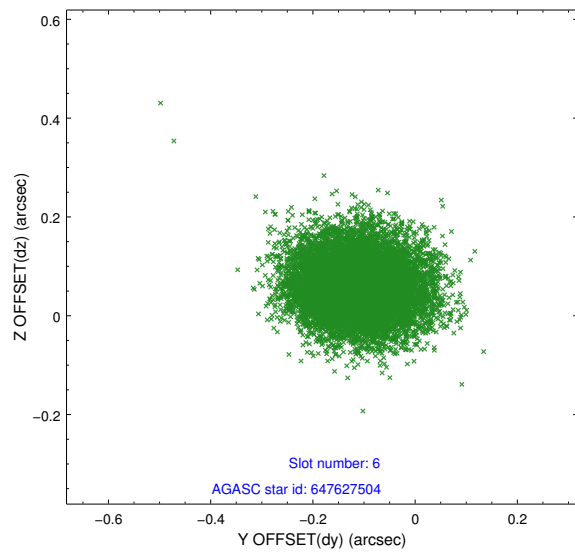
## 2.4.2 Slot 4



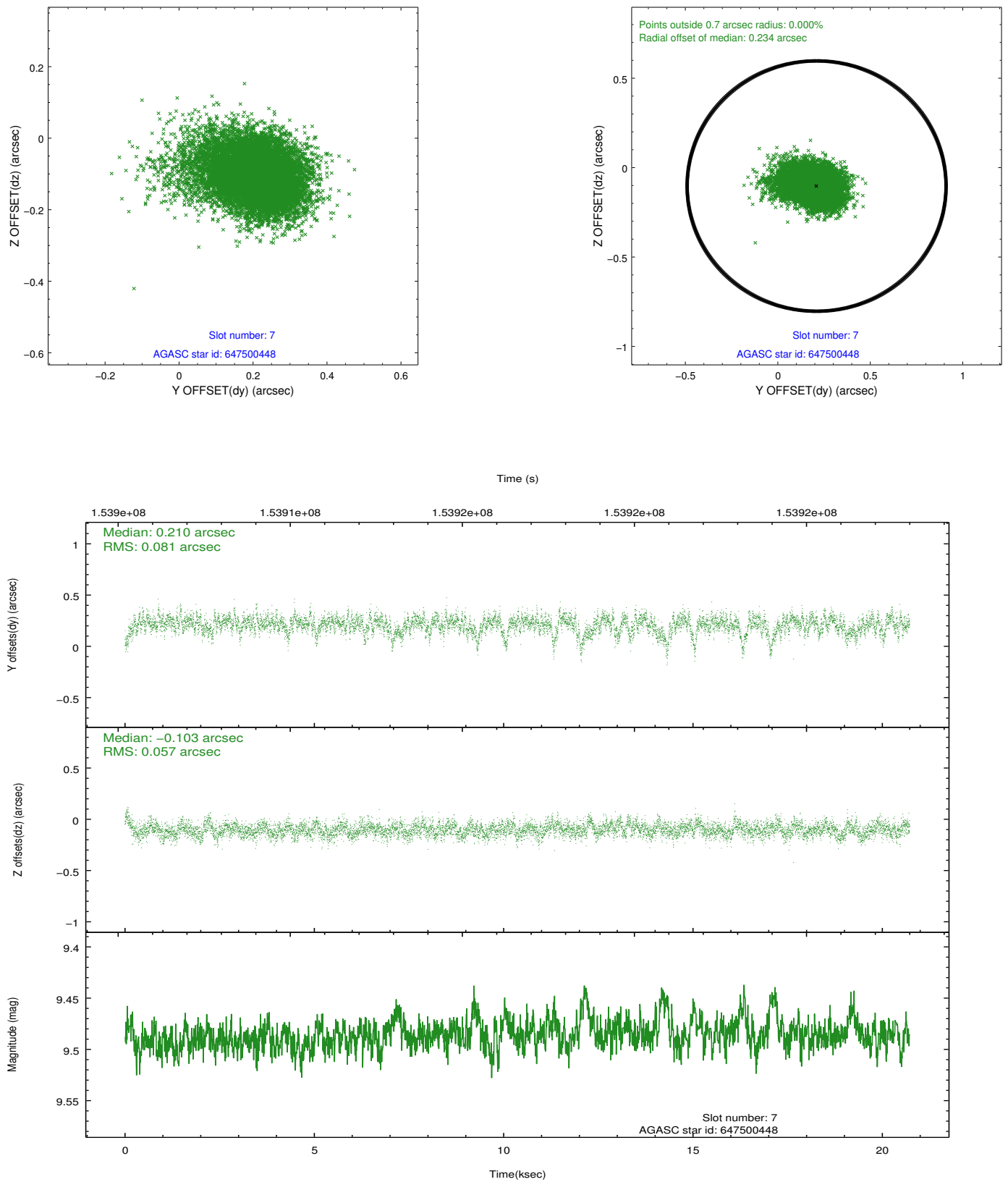
### 2.4.3 Slot 5



## 2.4.4 Slot 6

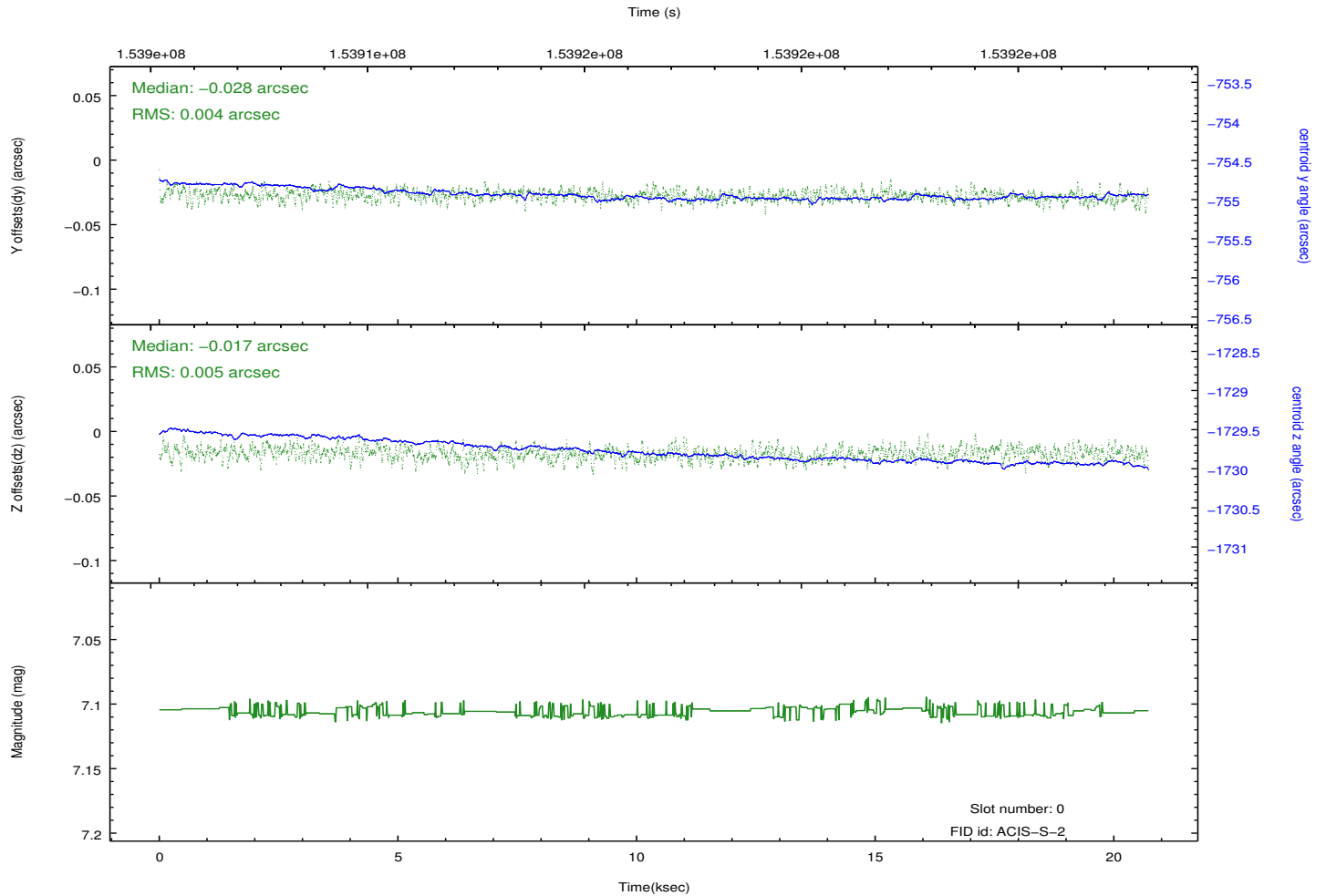
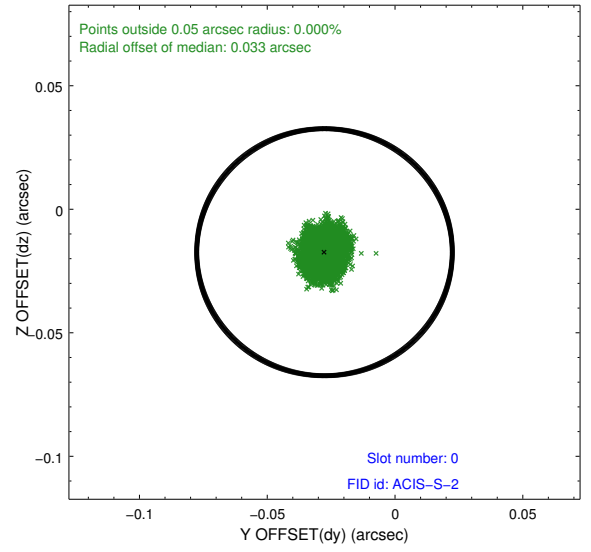
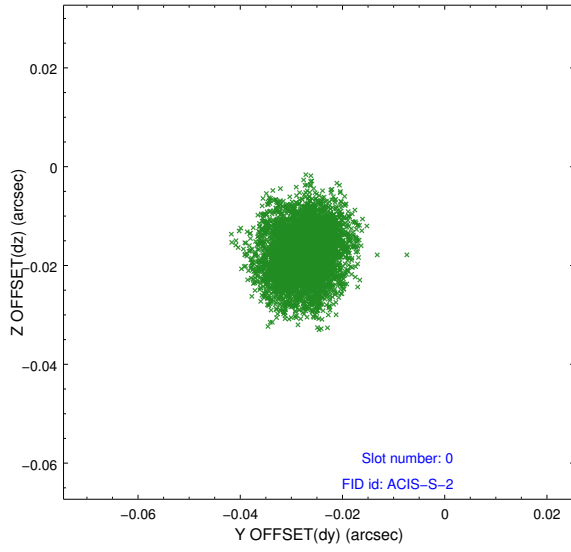


## 2.4.5 Slot 7

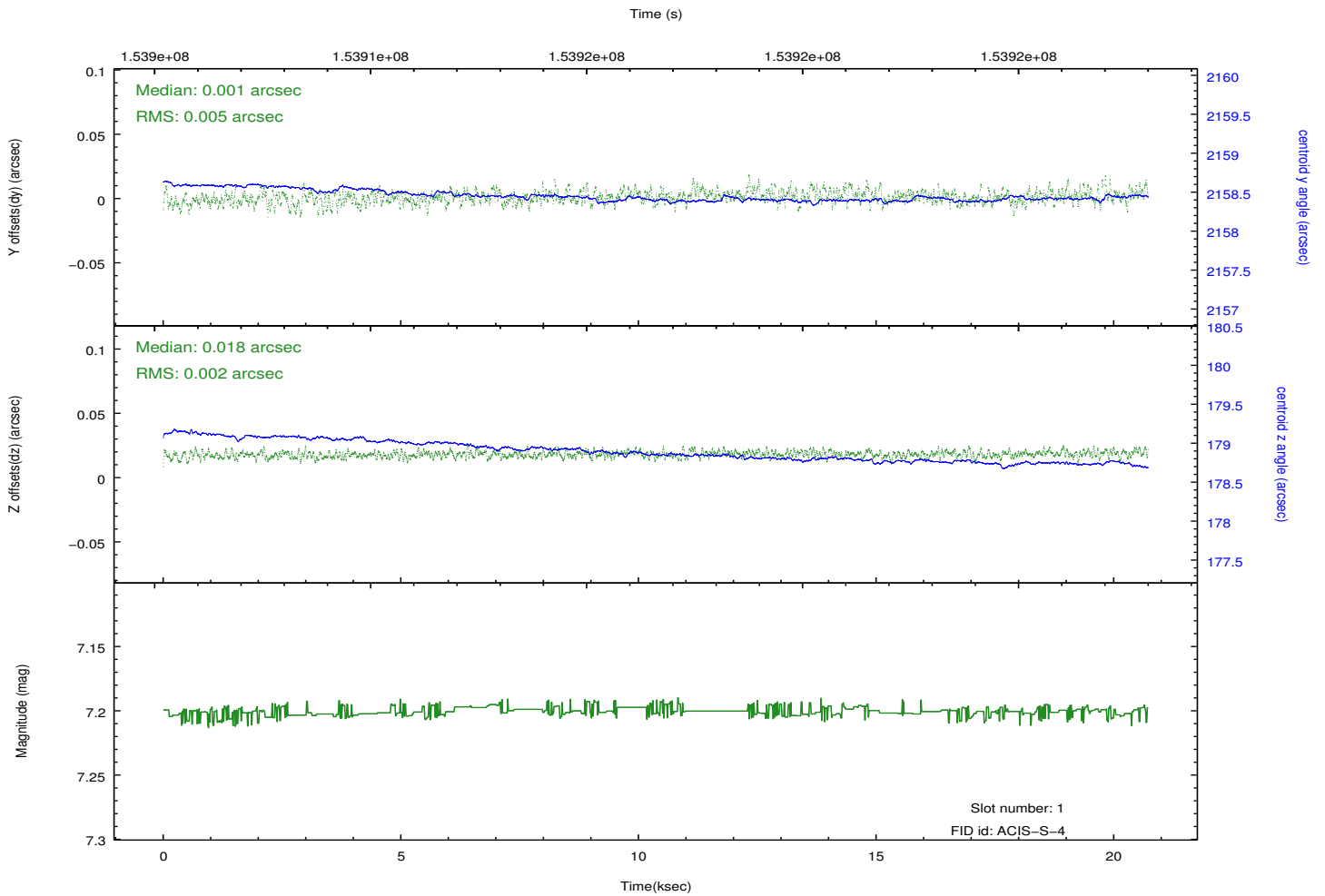
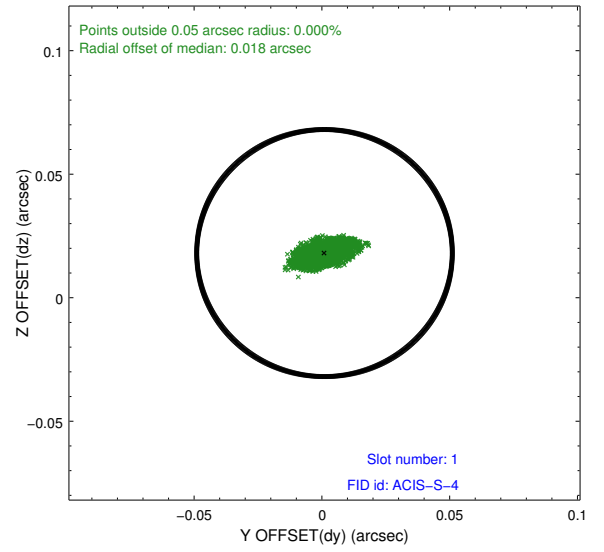
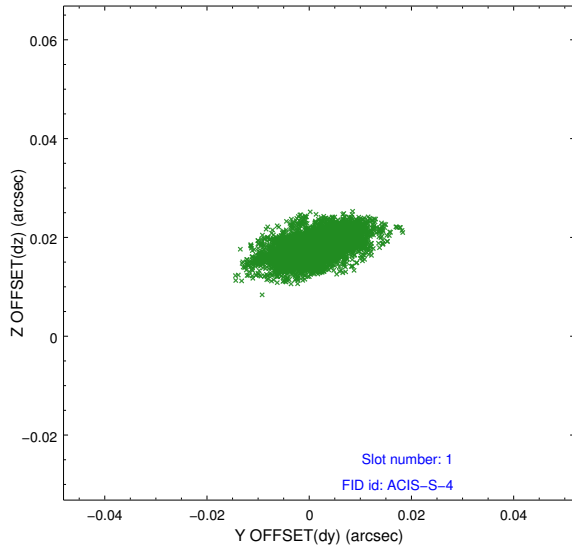


## 2.5 FID Slots

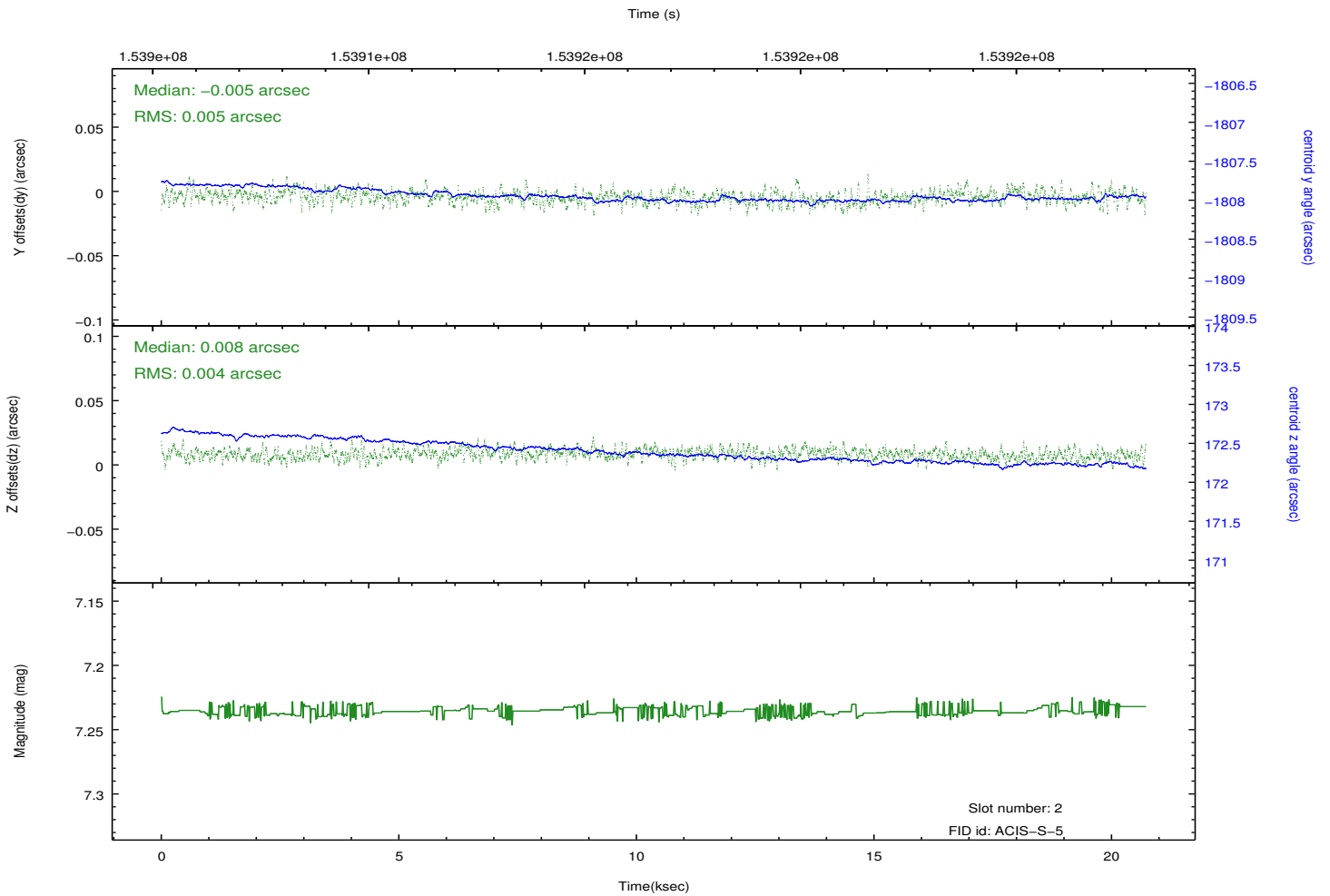
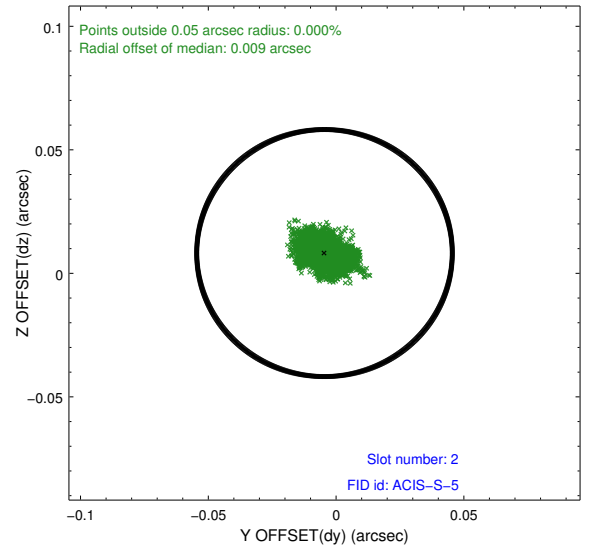
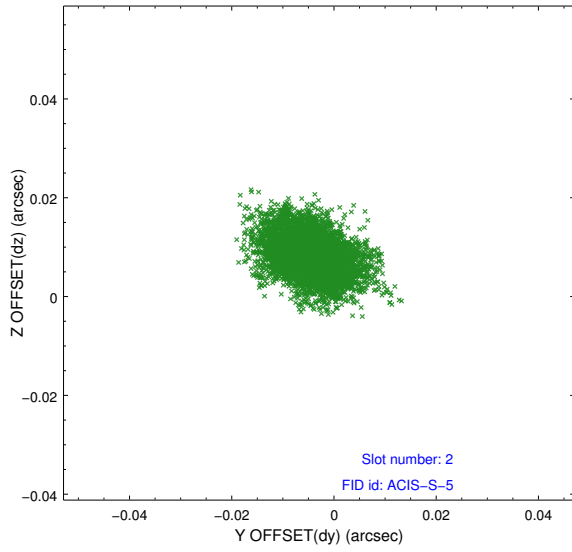
### 2.5.1 Slot 0



## 2.5.2 Slot 1



### 2.5.3 Slot 2



# A Summary

## A.1 Status

V&V Scientist	Jen Lauer
V&V Date (YYYY-MM-DD)	2012.10.26
V&V Edition	1
V&V Disposition and Status	OK
V&V Charge Time	19.932

## A.2 Comments