

# V&V Reference Report

## L2 ASCDS Version : 8.4.5

Observation 3181 - L2 Version 3  
Chandra X-Ray Center

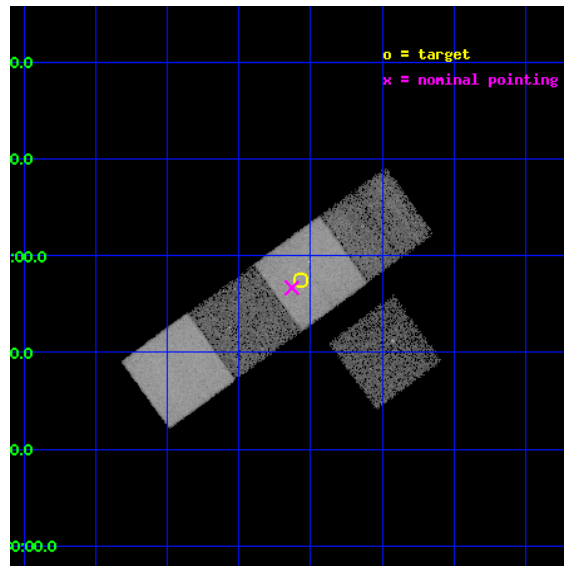
L2 Processing Date : Oct 17 2012

## Contents

<b>1</b>	<b>Front</b>	<b>2</b>
<b>2</b>	<b>OBI</b>	<b>3</b>
2.1	OBI . . . . .	3
2.1.1	Images . . . . .	3
2.1.2	Bias . . . . .	3
2.1.3	Parameters . . . . .	4
2.1.4	Events . . . . .	4
2.2	Compared Parameters . . . . .	5
2.3	Aspect . . . . .	6
2.4	Star Slots . . . . .	9
2.4.1	Slot 3 . . . . .	9
2.4.2	Slot 4 . . . . .	10
2.4.3	Slot 5 . . . . .	11
2.4.4	Slot 6 . . . . .	12
2.4.5	Slot 7 . . . . .	13
2.5	FID Slots . . . . .	14
2.5.1	Slot 0 . . . . .	14
2.5.2	Slot 1 . . . . .	15
2.5.3	Slot 2 . . . . .	16
<b>A</b>	<b>Summary</b>	<b>17</b>
A.1	Status . . . . .	17
A.2	Comments . . . . .	17

# 1 Front

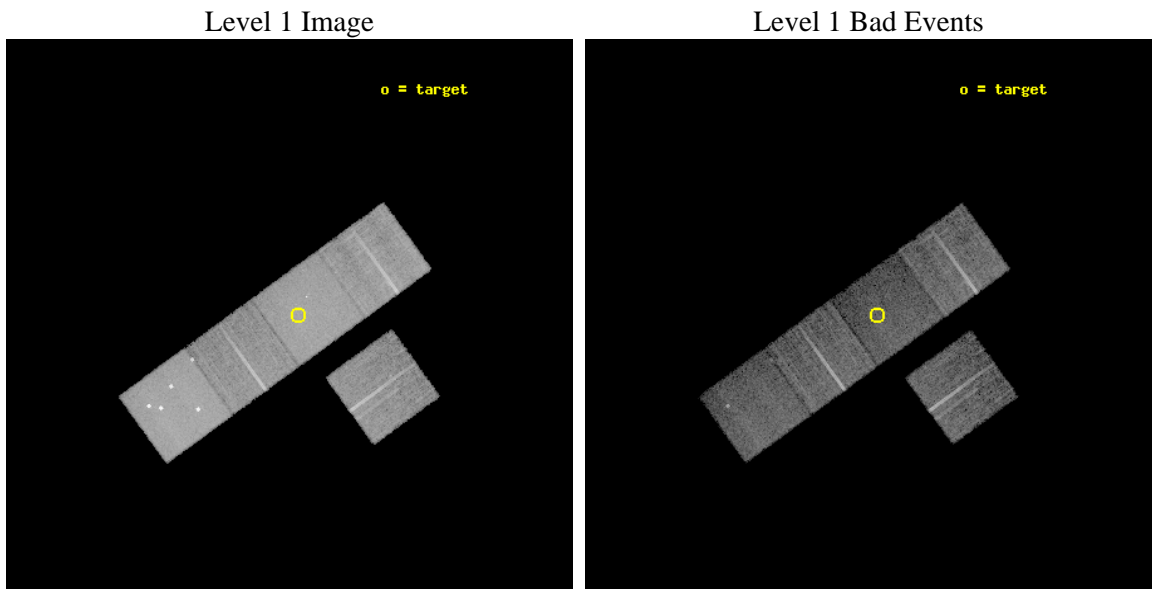
seq_num	800181	Sequence number
obs_id	3181	Observation id
title	A NEW GALAXY CLUSTER STRONG LENS	Proposal title
observer	Professor Michael Gladders	Principal investigator
object	RCS0224-0002	Source name
dtcycle	0	&#160
cycle	P	events from which exps? Prim/Second/Both
ra_targ	36.142083	Observer's specified target RA [deg]
dec_targ	-0.041917	Observer's specified target Dec [deg]
ra_nom	36.157786351298	Nominal RA [deg]
dec_nom	-0.055434733548739	Nominal Dec [deg]
roll_nom	324.02773103897	Nominal Roll [deg]
revision	3	Processing version of data
ontime	14560.699971974	Sum of GTIs [s]
livetime	14370.453707409	Livetime [s]
ontime3	14560.699971974	Sum of GTIs [s]
ontime5	14560.699971974	Sum of GTIs [s]
ontime6	14560.699971974	Sum of GTIs [s]
ontime7	14560.699971974	Sum of GTIs [s]
ontime8	14560.699971974	Sum of GTIs [s]
l2events	172366	Number of level 2 events



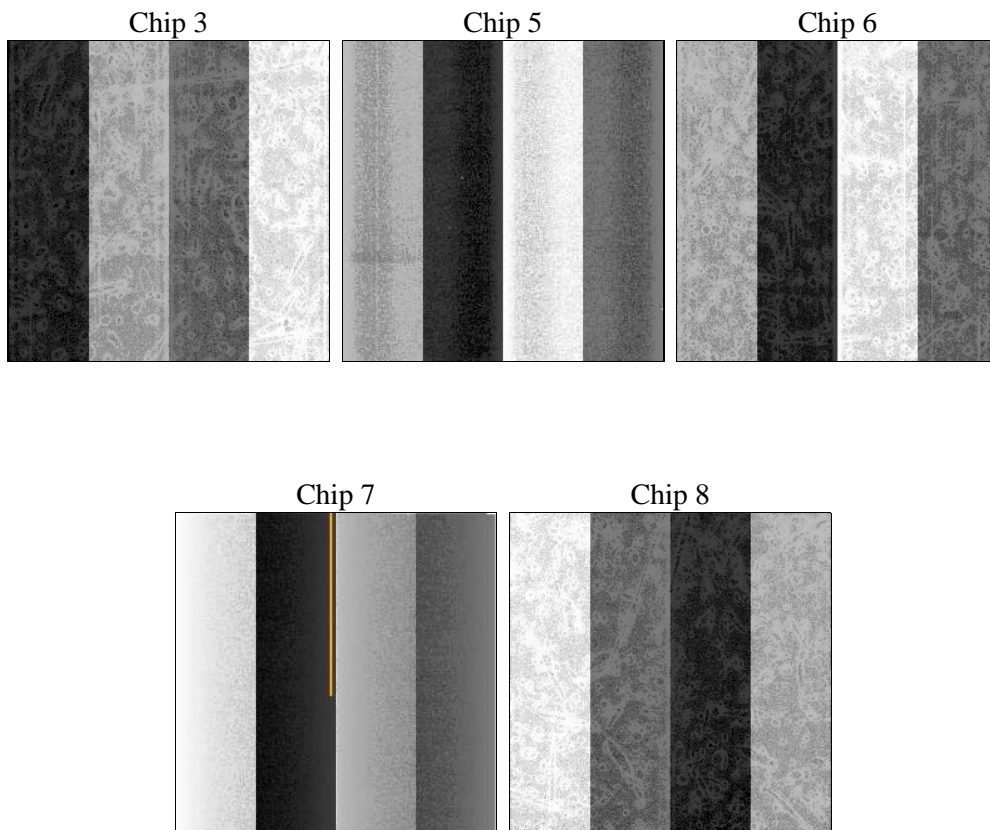
## 2 OBI

### 2.1 OBI

#### 2.1.1 Images



#### 2.1.2 Bias



### 2.1.3 Parameters

obi_num	2	Obi number	sched_exp_time	14381.956000	[s] Scheduled observation exposure time
ascdsver	8.4.5	Processing system revision	ontime	14560.699971974	Sum of GTIs [s]
caldbver	4.5.2	&#160	ontime3	14560.699971974	Sum of GTIs [s]
date	2012-10-17T12:05:59	Date and time of file creation	ontime5	14560.699971974	Sum of GTIs [s]
revision	3	Processing version of data	ontime6	14560.699971974	Sum of GTIs [s]
			ontime7	14560.699971974	Sum of GTIs [s]
			ontime8	14560.699971974	Sum of GTIs [s]
			l1events	536768	Number of level 1 events

### 2.1.4 Events

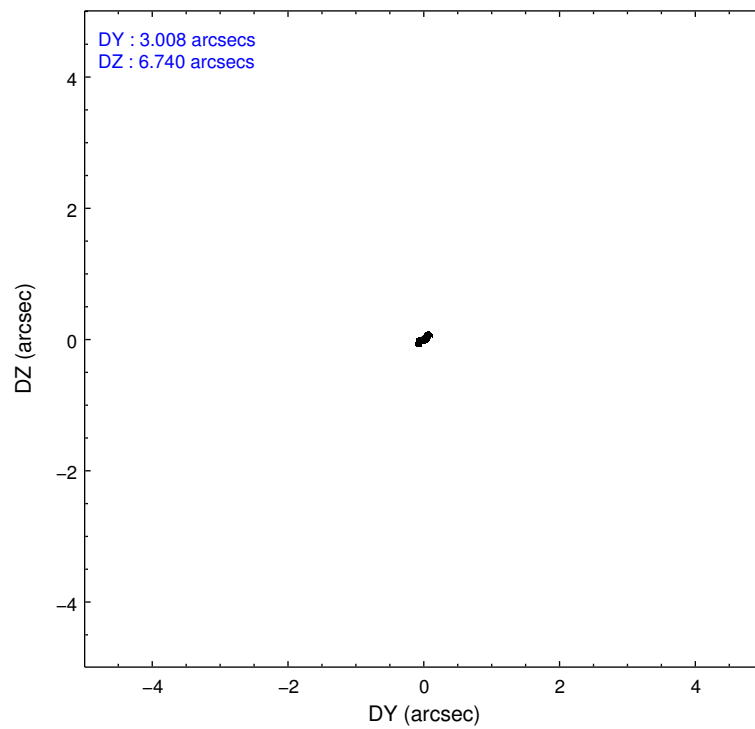
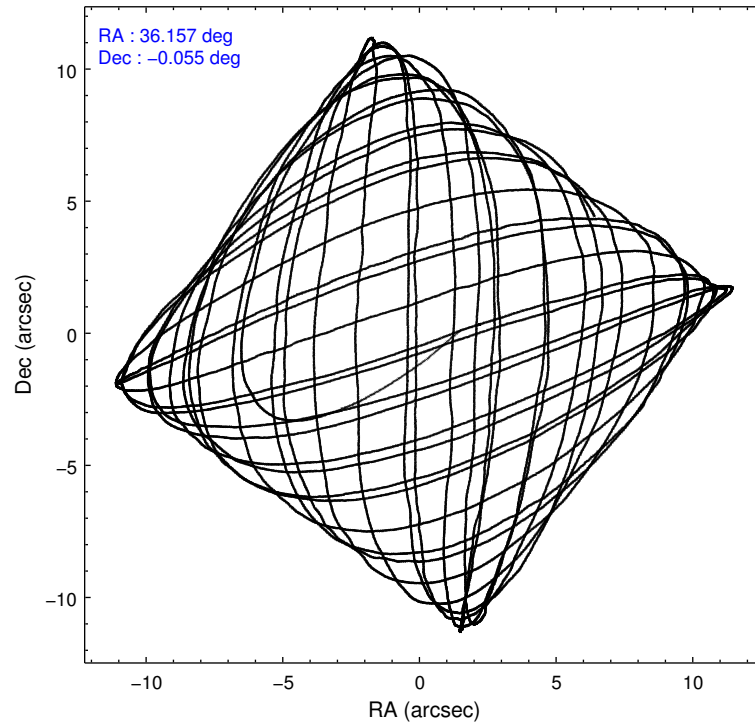
	ccd 3	ccd 5	ccd 6	ccd 7	ccd 8
level 1 events	77189	148274	84475	118770	108060
rejected events	68667	58663	72449	49799	81636
rejected %	88%	39%	85%	41%	75%

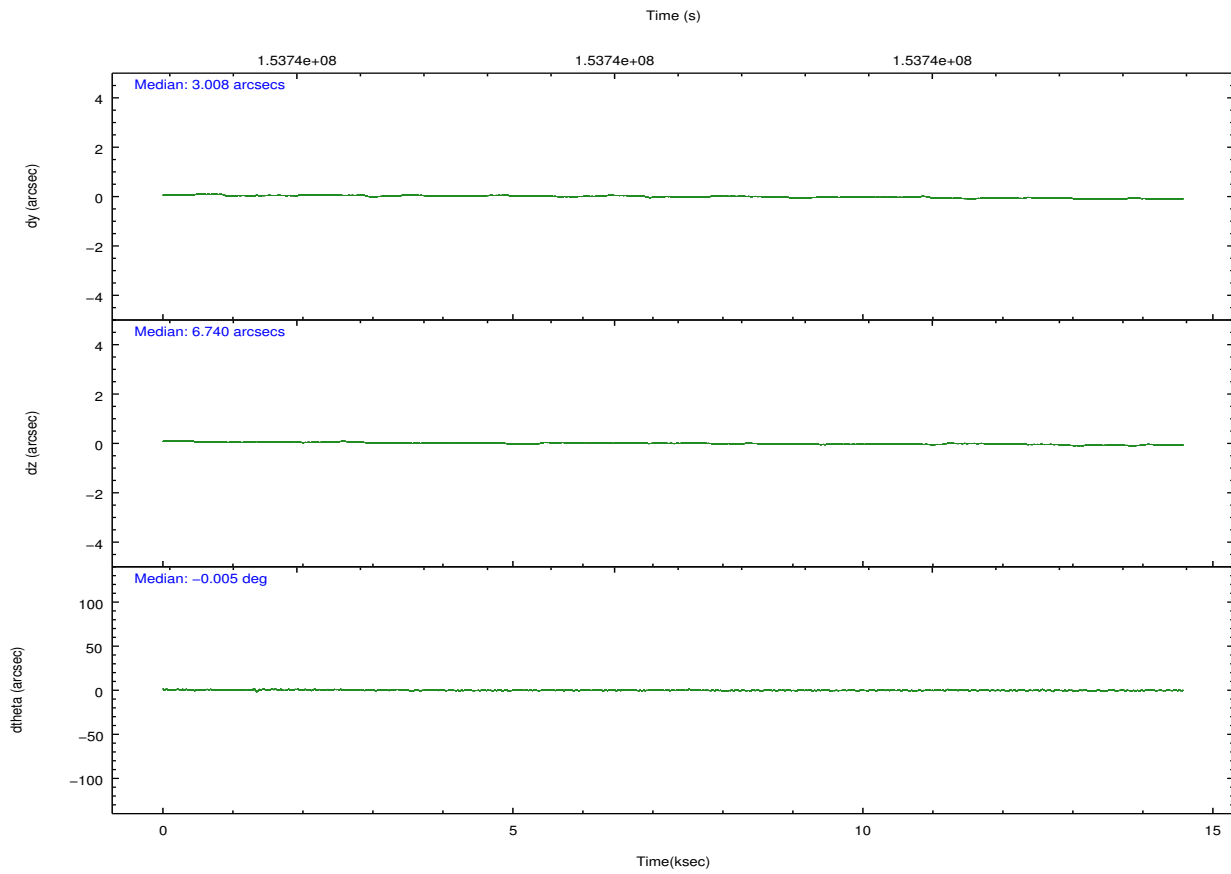
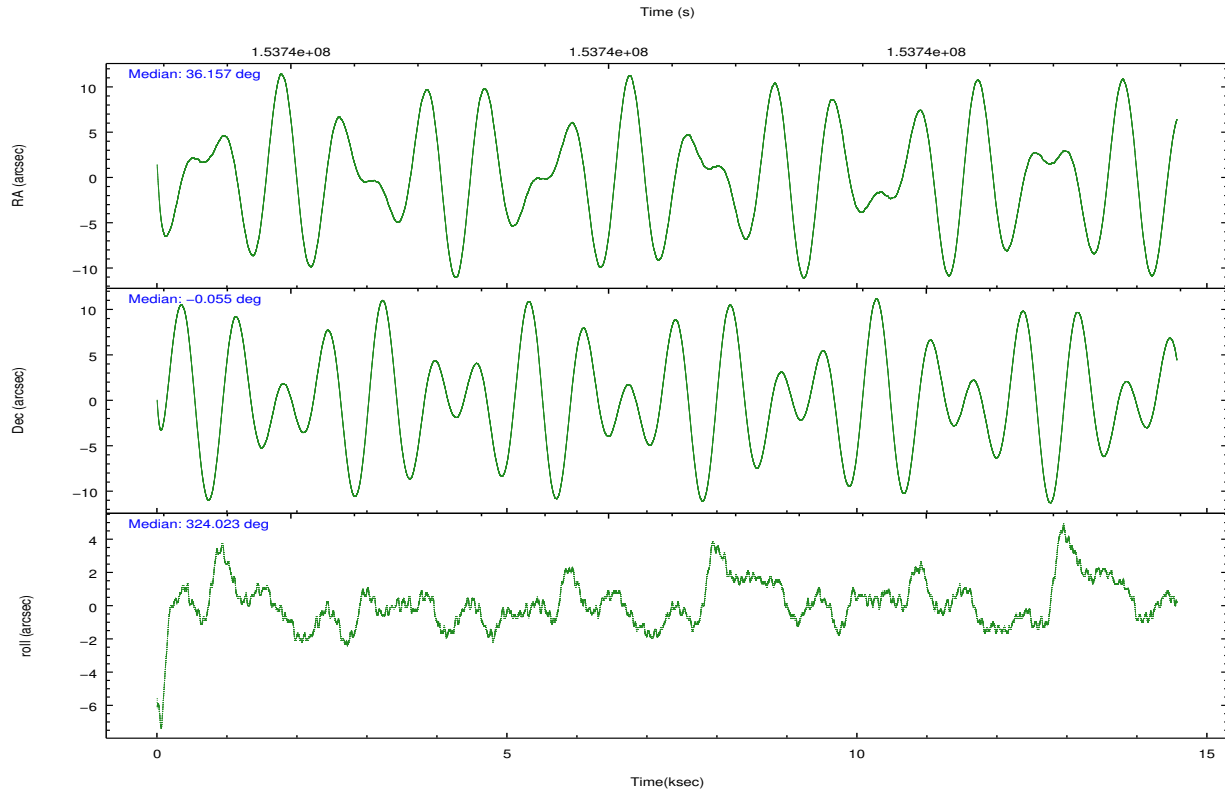
	ccd 3	ccd 5	ccd 6	ccd 7	ccd 8
grade 0 events	4016	19953	6519	7261	11423
	5%	13%	7%	6%	10%
grade 1 events	41	617	47	79	77
	0%	0%	0%	0%	0%
grade 2 events	1543	25116	2055	13501	5292
	1%	16%	2%	11%	4%
grade 3 events	915	4317	999	6007	2380
	1%	2%	1%	5%	2%
grade 4 events	873	4116	976	6043	2142
	1%	2%	1%	5%	1%
grade 5 events	2895	9033	3162	9301	4345
	3%	6%	3%	7%	4%
grade 6 events	1438	38312	1753	37732	6054
	1%	25%	2%	31%	5%
grade 7 events	65468	46810	68964	38846	76347
	84%	31%	81%	32%	70%

## 2.2 Compared Parameters

Parameter	Planned	Actual	Parameter	Planned	Actual
Instrument	ACIS	ACIS	Obspar format version number	7	7
Detector	ACIS-35678	ACIS-35678	Obspar file type	PREDICTED	ACTUAL
Grating	NONE	NONE	Obspar update status	NONE	UPDATED
Data mode	VFAINT	VFAINT	Number of optional ACIS chips dropped	0	0
Observation mode	POINTING	POINTING	On-chip summing requested	N	N
[deg] Pointing RA	36.130688	36.15778635129833	Subarray requested	NONE	NONE
[deg] Pointing Dec	-0.053001	-0.05543473354873876	Alternating exposures requested	N	N
[deg] Pointing Roll	323.871077	324.0277310389749	[s] Primary exposure time	0.000000	3.1
[mm] SIM focus pos	-0.684267	-0.6828225247311905			
[mm] SIM defocus	0	0.001444936568705701			
[mm] SIM translation stage pos	-190.132523	-190.1425803651734			
[mm] SIM translation stage offset	0	0.01005778216563158			
[s] Observation start time (MET)	153733823.184000	153732527.33655			
Observation start date	2002-11-15T07:49:19	2002-11-15T07:28:47			
[s] Observation end time (MET)	153748205.184000	153748519.38722			
Observation end date	2002-11-15T11:49:01	2002-11-15T11:55:19			
Read mode	TIMED	TIMED			

## 2.3 Aspect



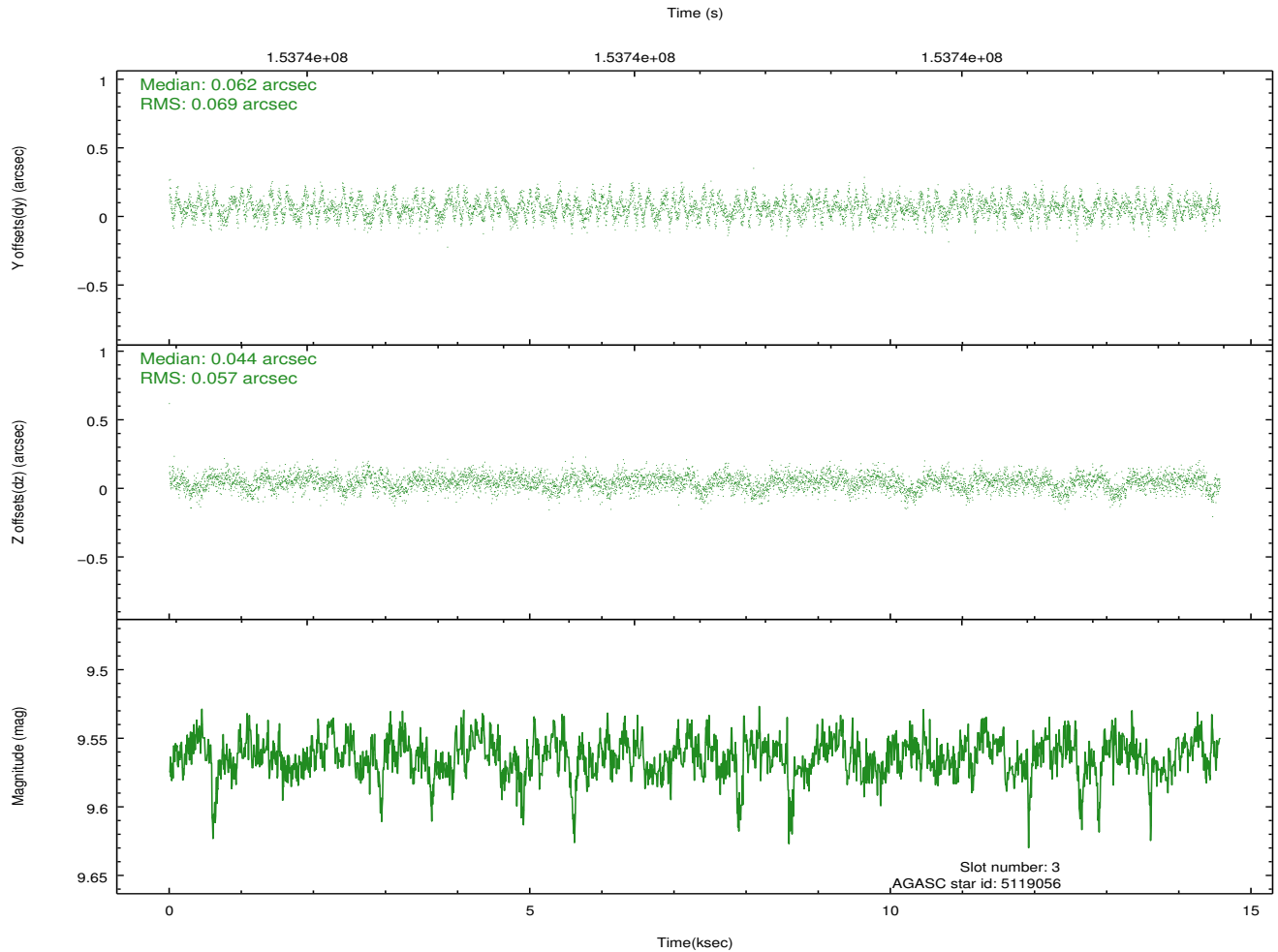
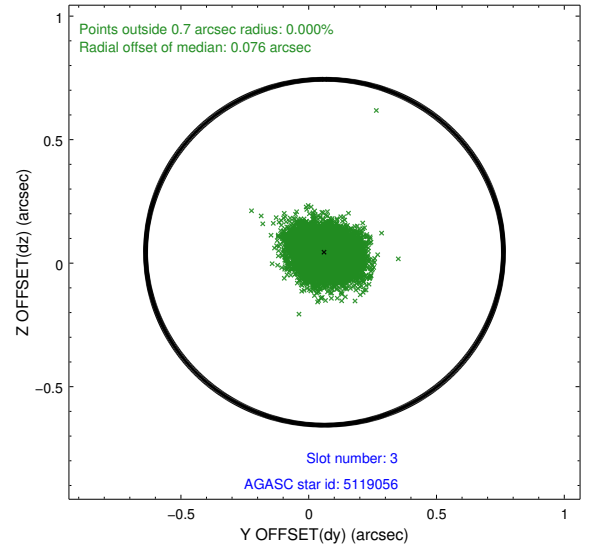
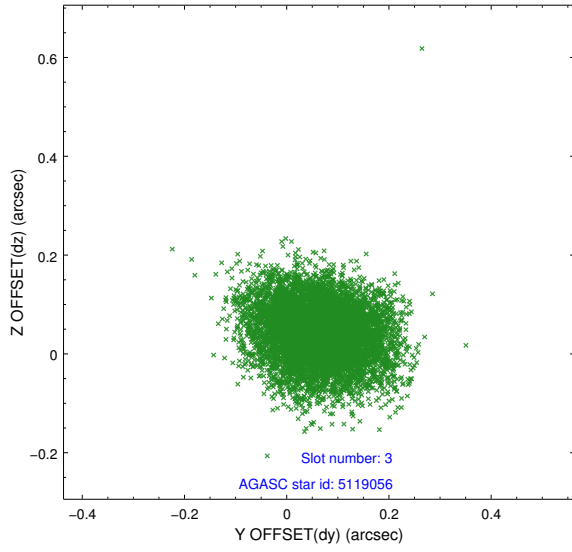


### Slot Statistics

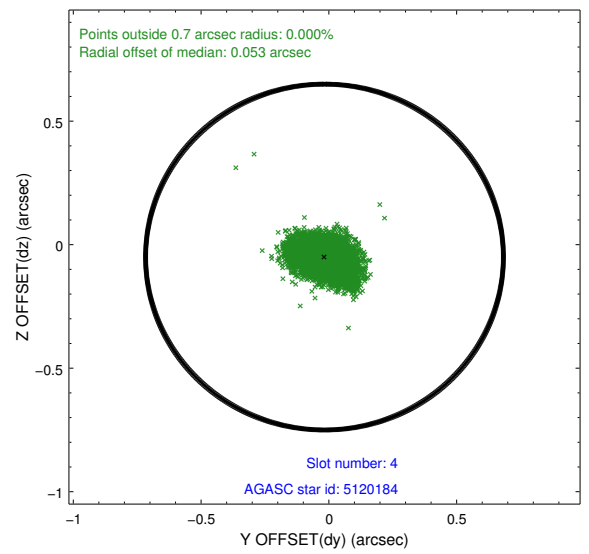
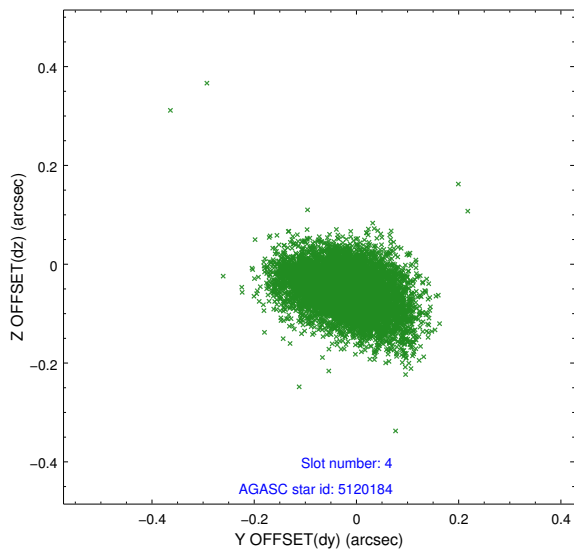
slot	status	id	mag	n_pts	med_dy	med_dz	dr1	dr2	ra	dec	mean_y	mean_z
0	FID	ACIS-S-2	7.12	3554	-0.029	-0.000	0.007	0.011	0.000000	0.000000	-755.65	-1727.85
1	FID	ACIS-S-4	7.20	3553	0.009	0.014	0.006	0.010	0.000000	0.000000	2157.50	180.36
2	FID	ACIS-S-5	7.24	3553	-0.011	-0.005	0.007	0.012	0.000000	0.000000	-1808.09	174.32
3	GUIDE	5119056	9.56	7096	0.062	0.044	0.095	0.152	36.799344	0.156256	1501.60	2028.01
4	GUIDE	5120184	8.87	7106	-0.017	-0.050	0.082	0.136	35.687918	0.425094	-2300.51	450.45
5	GUIDE	614865392	7.32	7099	-0.099	-0.000	0.052	0.087	35.431996	-0.351339	-1396.88	-2350.49
6	GUIDE	614866048	9.33	7104	0.061	-0.036	0.108	0.171	35.542724	-0.257167	-1274.64	-1842.05
7	GUIDE	614866304	8.61	7107	-0.007	0.050	0.071	0.109	35.871551	-0.547495	297.68	-1987.96

## 2.4 Star Slots

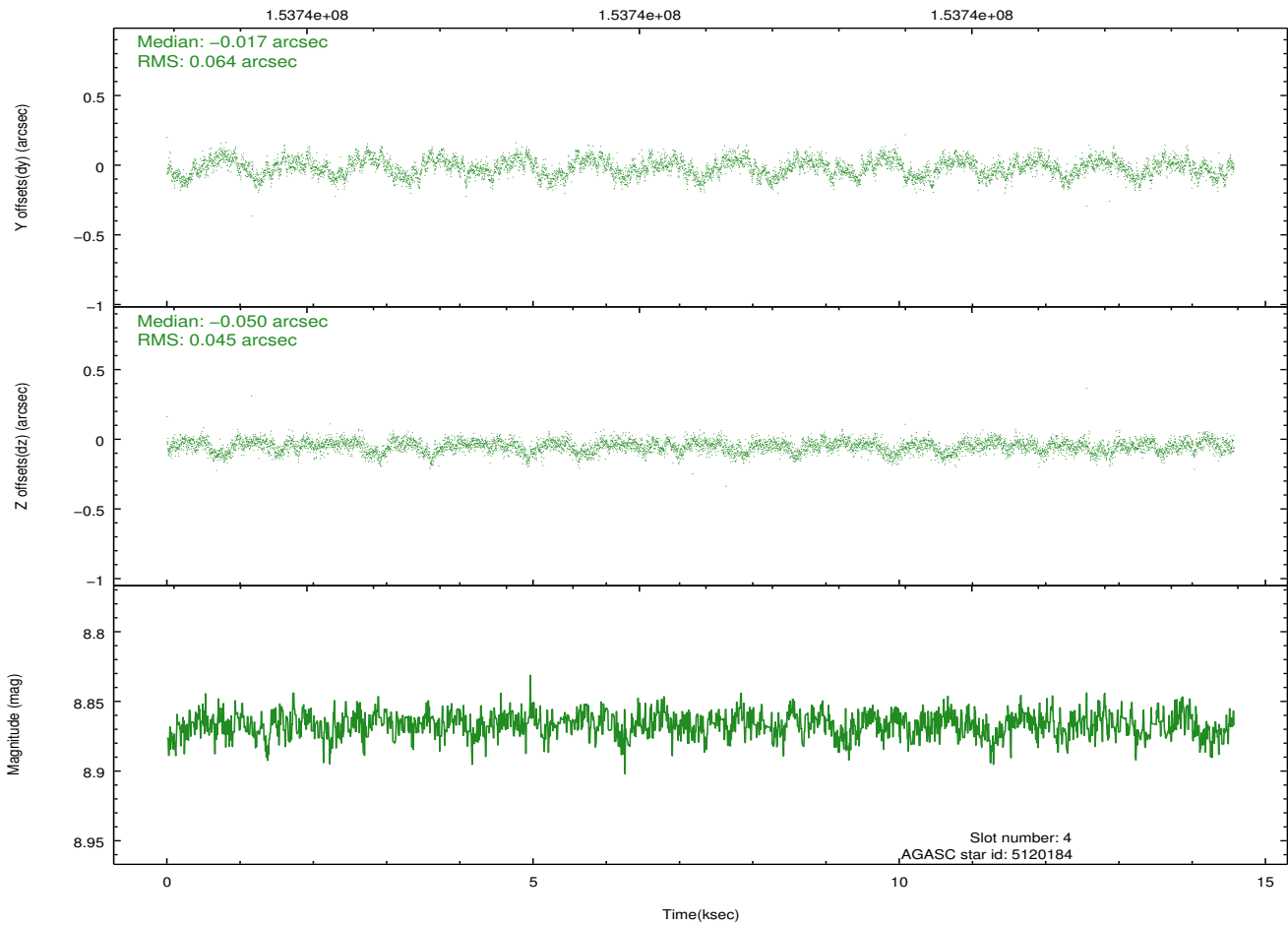
### 2.4.1 Slot 3



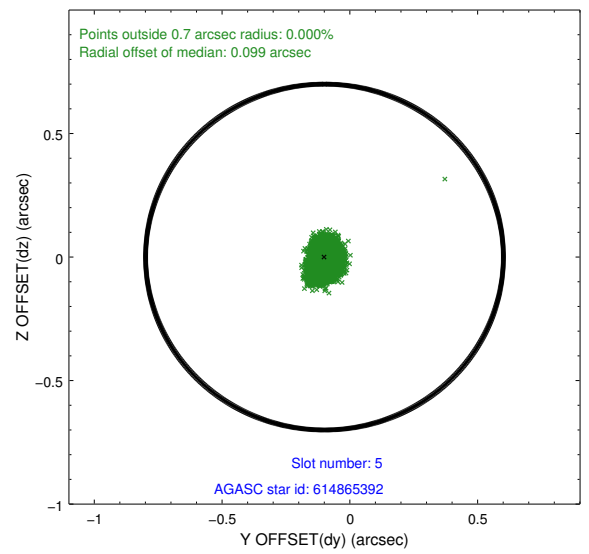
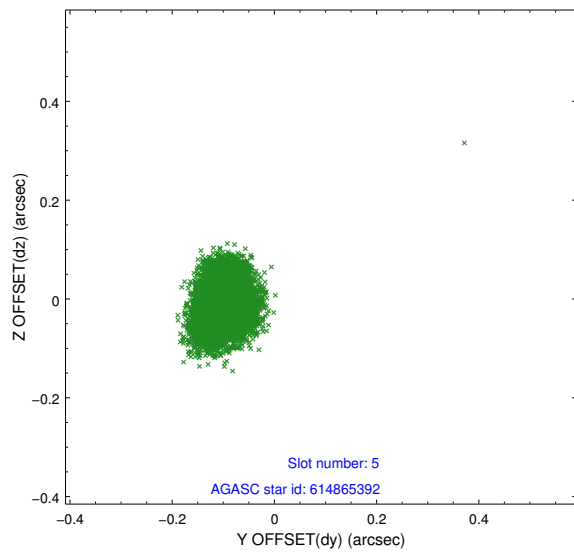
## 2.4.2 Slot 4



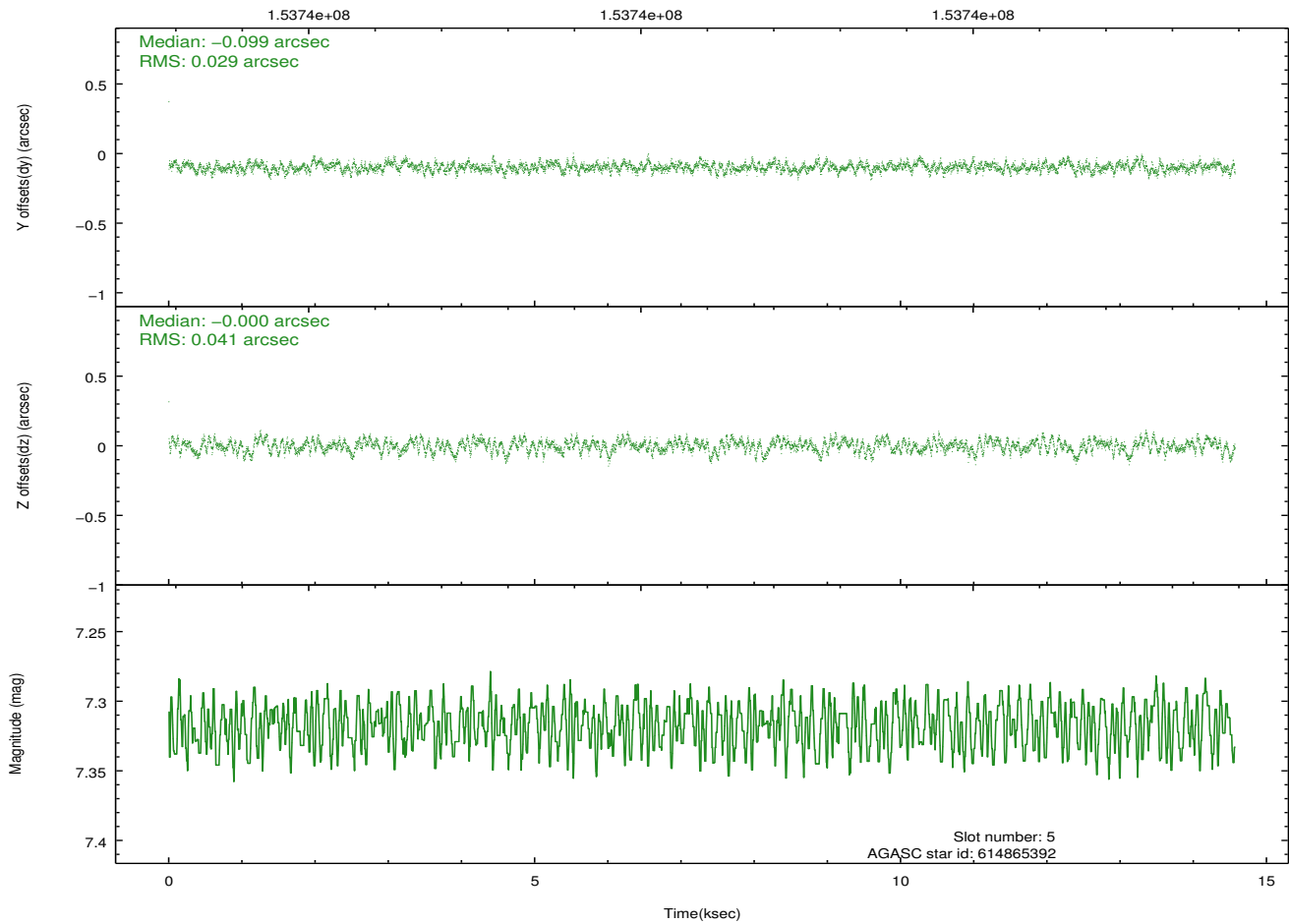
Time (s)



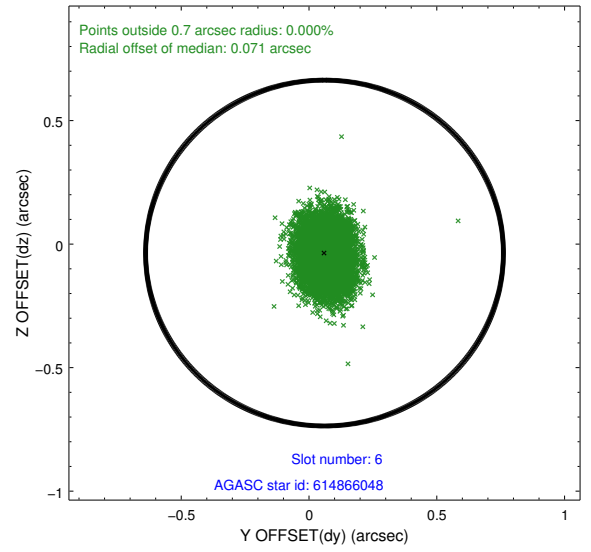
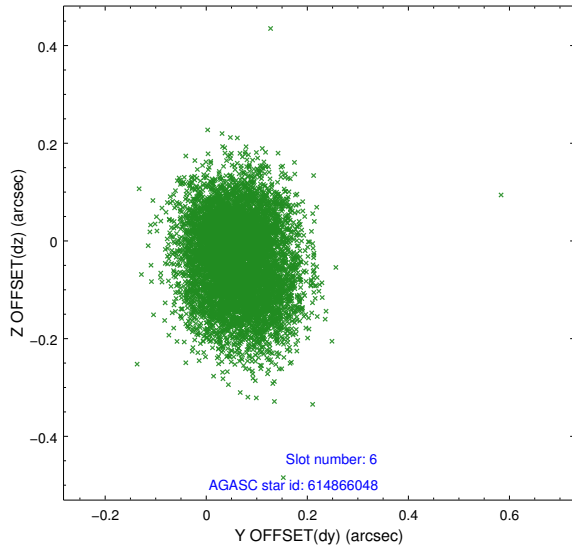
### 2.4.3 Slot 5



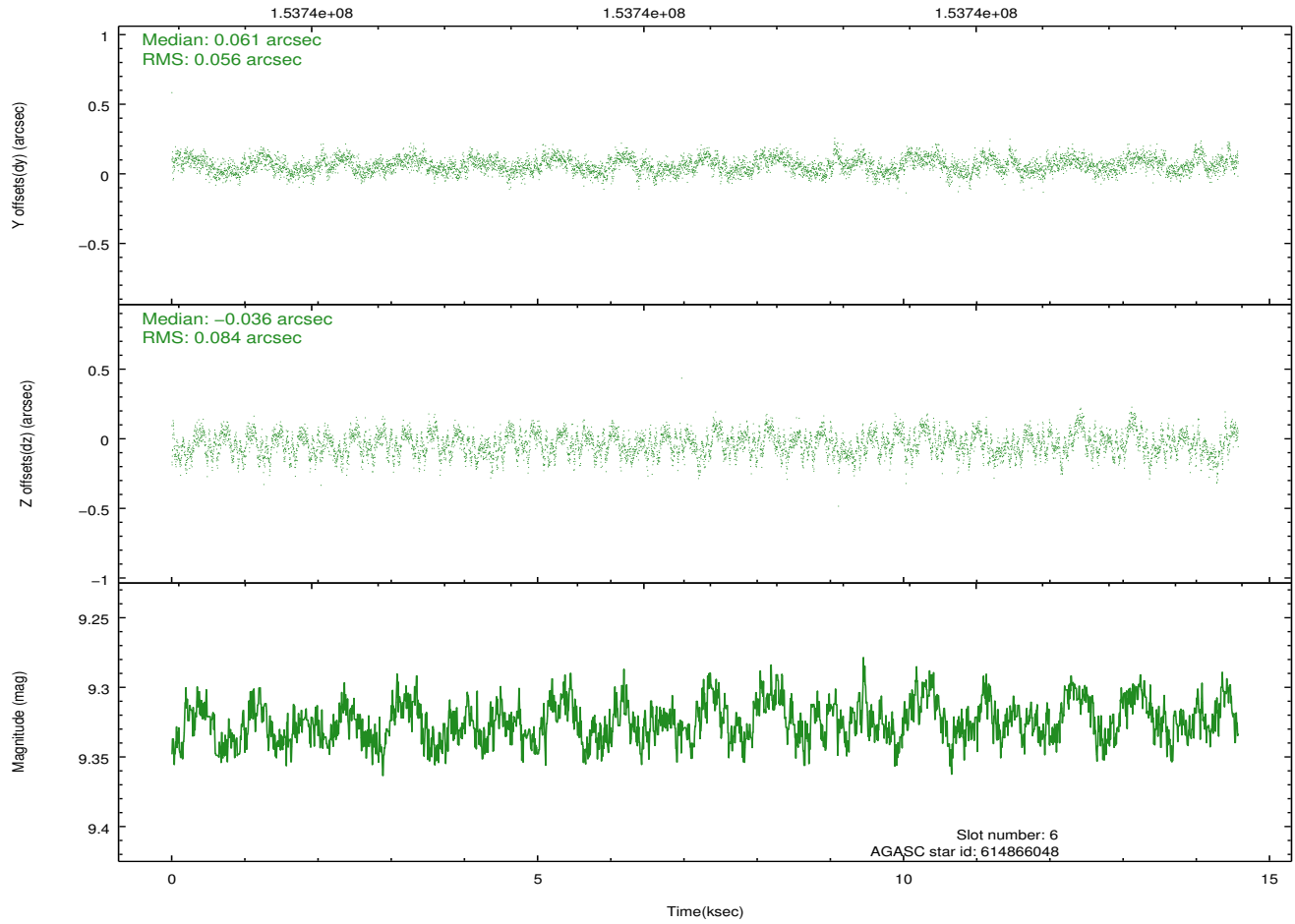
Time (s)



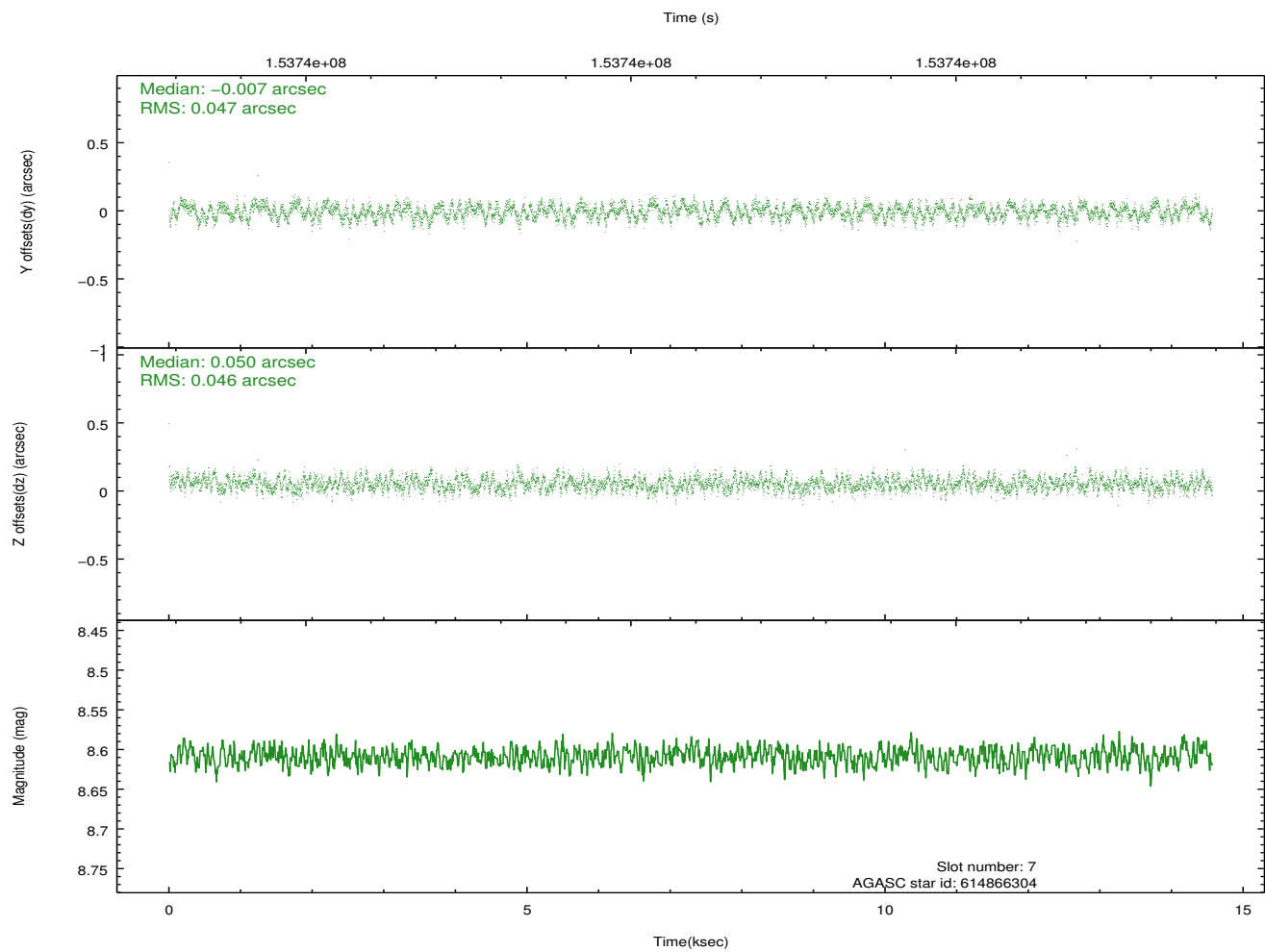
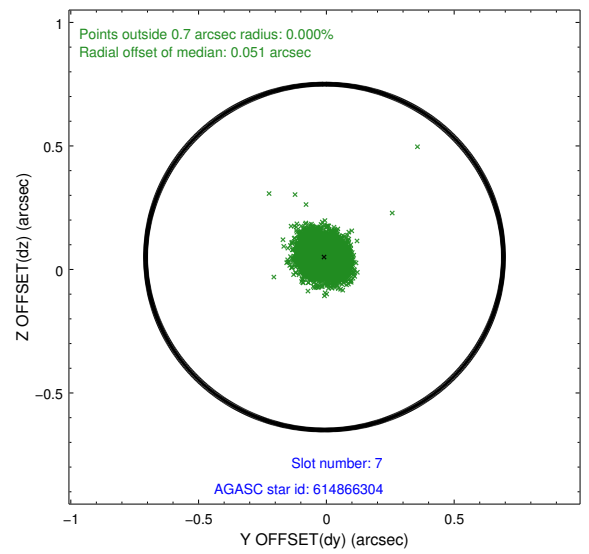
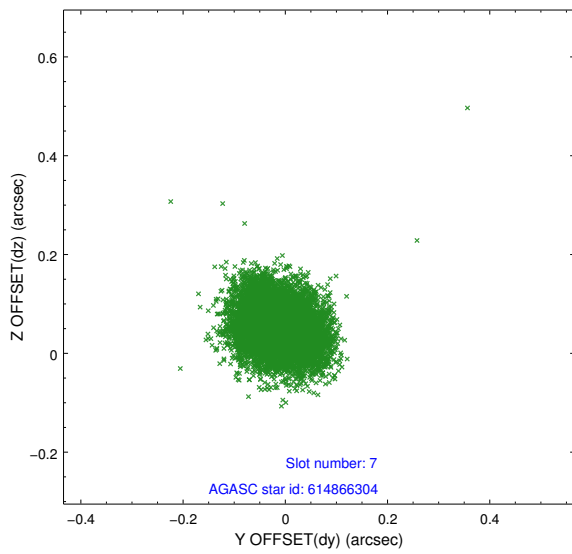
## 2.4.4 Slot 6



Time (s)

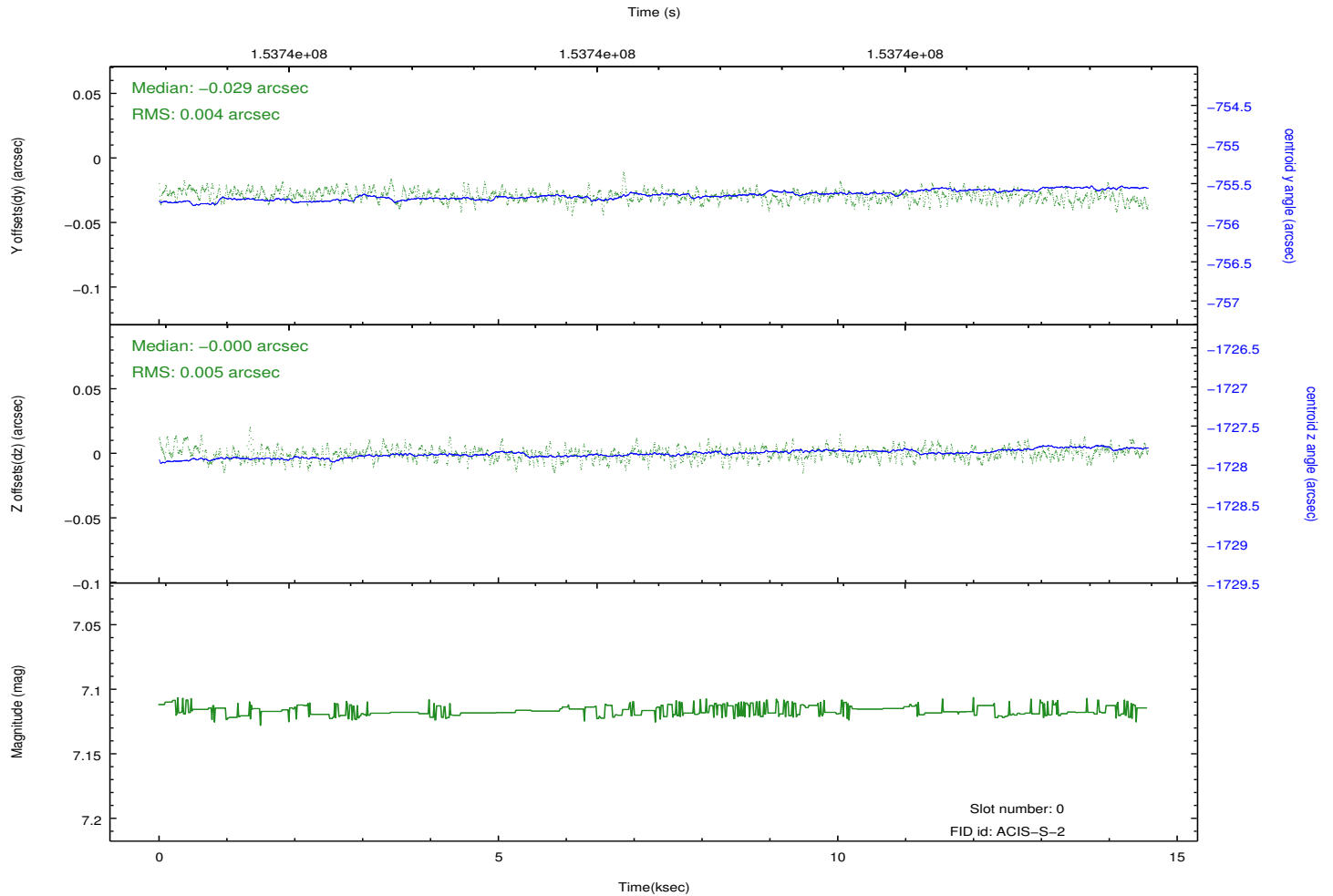
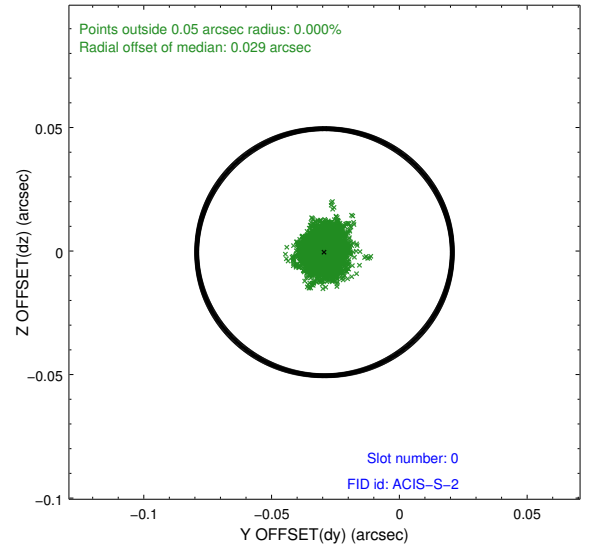
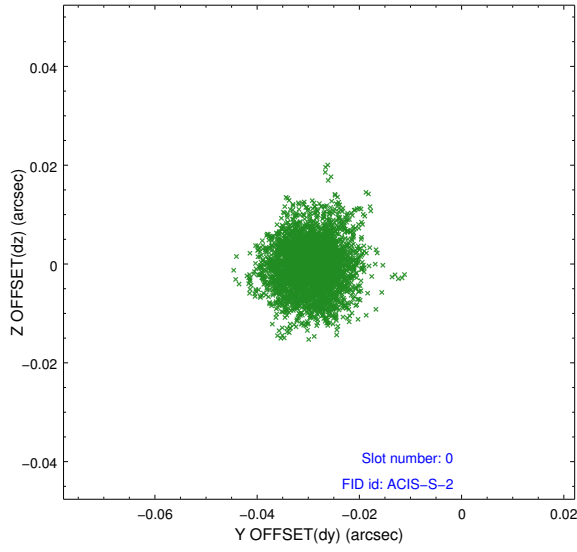


## 2.4.5 Slot 7

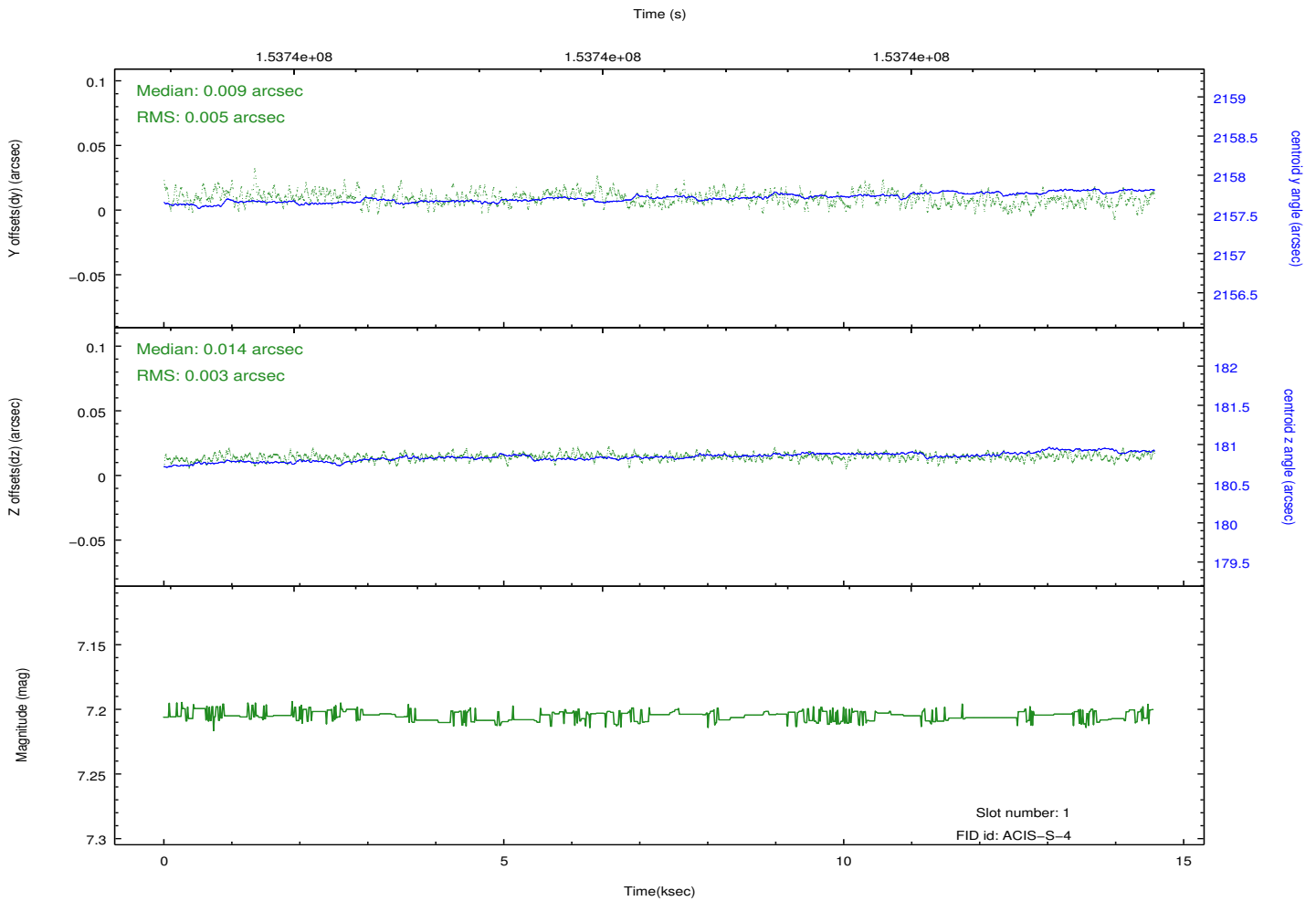
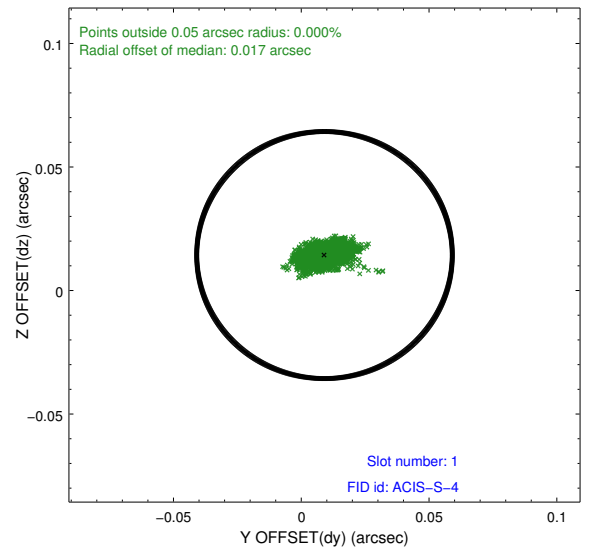
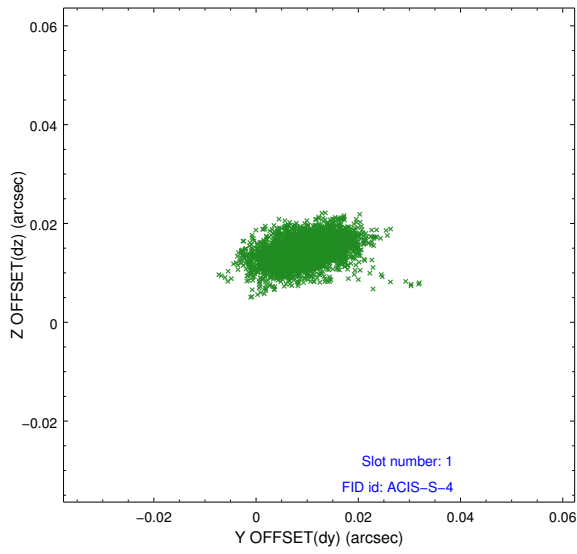


## 2.5 FID Slots

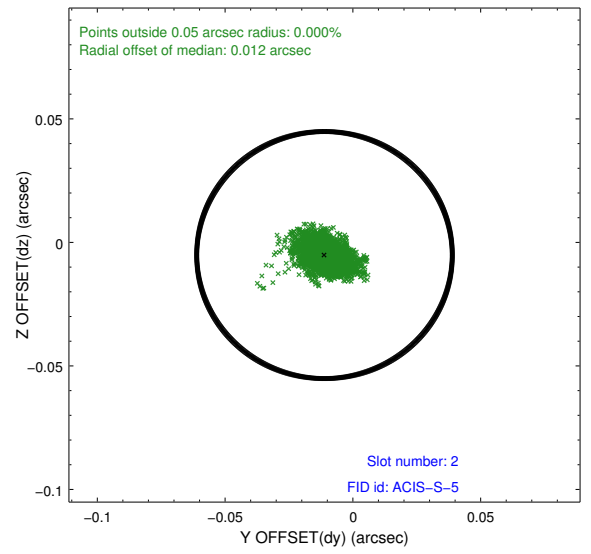
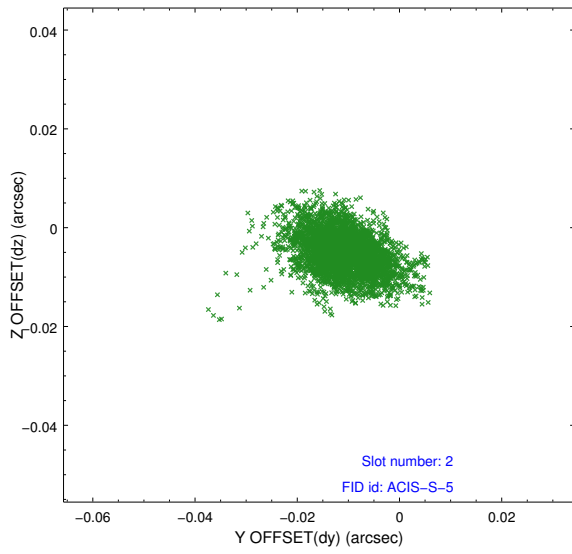
### 2.5.1 Slot 0



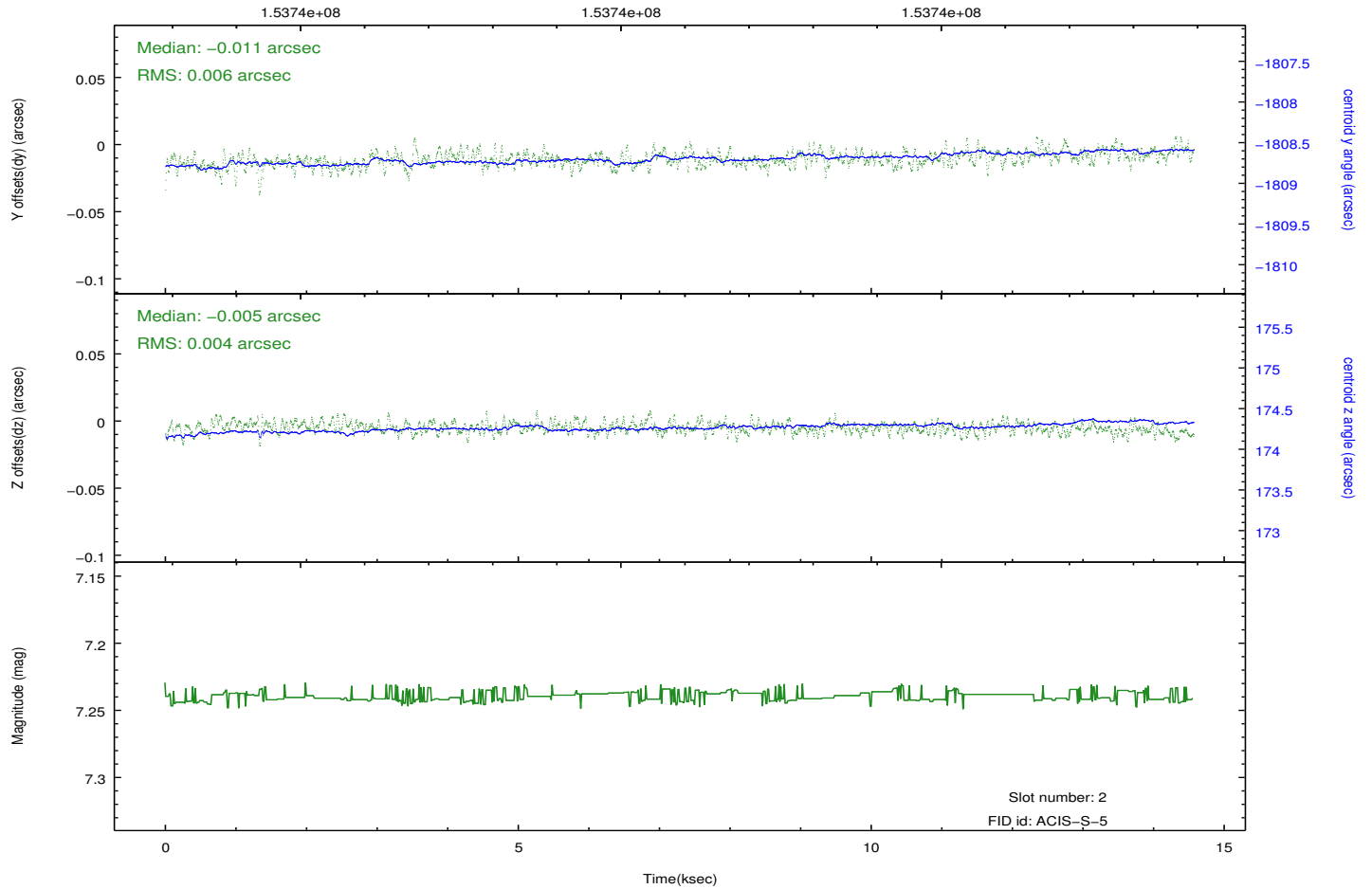
## 2.5.2 Slot 1



### 2.5.3 Slot 2



Time (s)



# A Summary

## A.1 Status

V&V Scientist	Jen Lauer
V&V Date (YYYY-MM-DD)	2012.10.26
V&V Edition	1
V&V Disposition and Status	OK
V&V Charge Time	14.56

## A.2 Comments

Joint Proposal: CX0-HST