

V&V Reference Report

L2 ASCDS Version : 8.4.5

Observation 321 - L2 Version 4
Chandra X-Ray Center

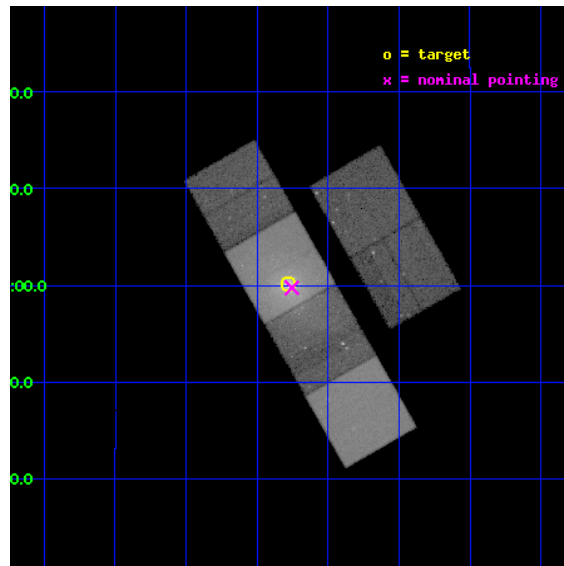
L2 Processing Date : Aug 29 2012

Contents

1	Front	2
2	OBI	3
2.1	OBI	3
2.1.1	Images	3
2.1.2	Bias	3
2.1.3	Parameters	4
2.1.4	Events	4
2.2	Compared Parameters	5
2.3	Aspect	6
2.4	Star Slots	9
2.4.1	Slot 3	9
2.4.2	Slot 4	10
2.4.3	Slot 5	11
2.4.4	Slot 7	12
2.5	FID Slots	13
2.5.1	Slot 0	13
2.5.2	Slot 1	14
2.5.3	Slot 2	15
A	Summary	16
A.1	Status	16
A.2	Comments	16

1 Front

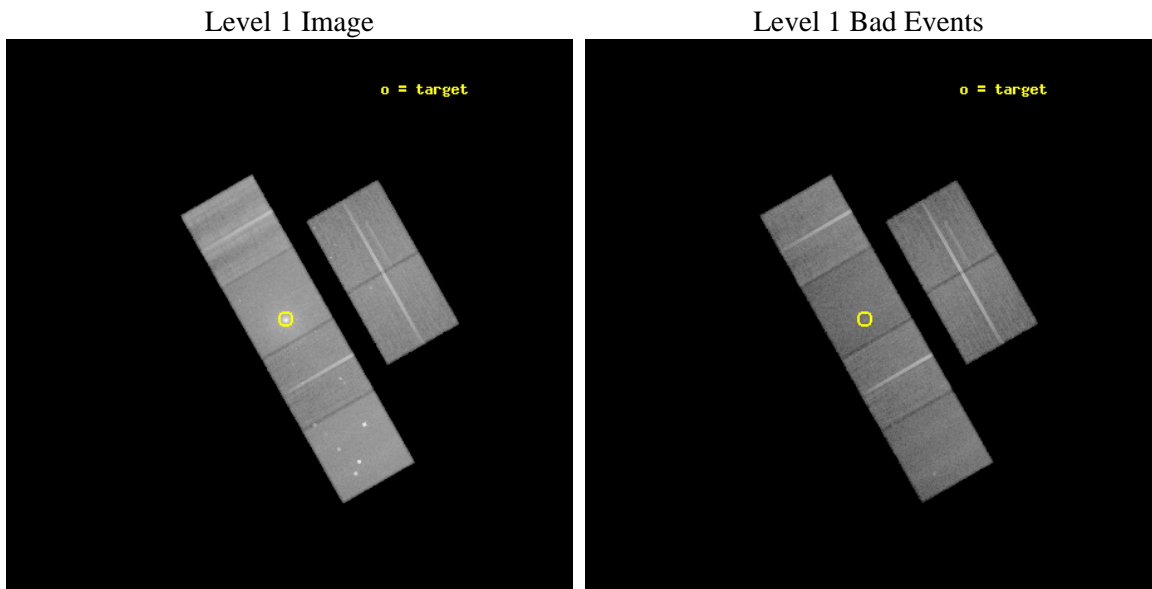
seq_num	600081	Sequence number
obs_id	321	Observation id
title	BRIGHT ELLIPTICAL GALAXIES AND HIGH REDSHIFT CLUSTERS	Proposal tit
observer	Dr. Richard Mushotzky	Principal investigator
object	NGC 4472	Source name
dtycycle	0	
cycle	P	events from which exps? Prim/Second/Both
ra_targ	187.445417	Observer's specified target RA [deg]
dec_targ	8.003611	Observer's specified target Dec [deg]
ra_nom	187.43890070393	Nominal RA [deg]
dec_nom	7.9959987784087	Nominal Dec [deg]
roll_nom	240.236359568	Nominal Roll [deg]
revision	4	Processing version of data
ontime	40095.918096945	Sum of GTIs [s]
livetime	39588.199439138	Livetime [s]
ontime2	40089.436116651	Sum of GTIs [s]
ontime3	40082.954206169	Sum of GTIs [s]
ontime5	40092.677076876	Sum of GTIs [s]
ontime6	40092.677076876	Sum of GTIs [s]
ontime7	40095.918096945	Sum of GTIs [s]
ontime8	40089.436286181	Sum of GTIs [s]
l2events	571313	Number of level 2 events



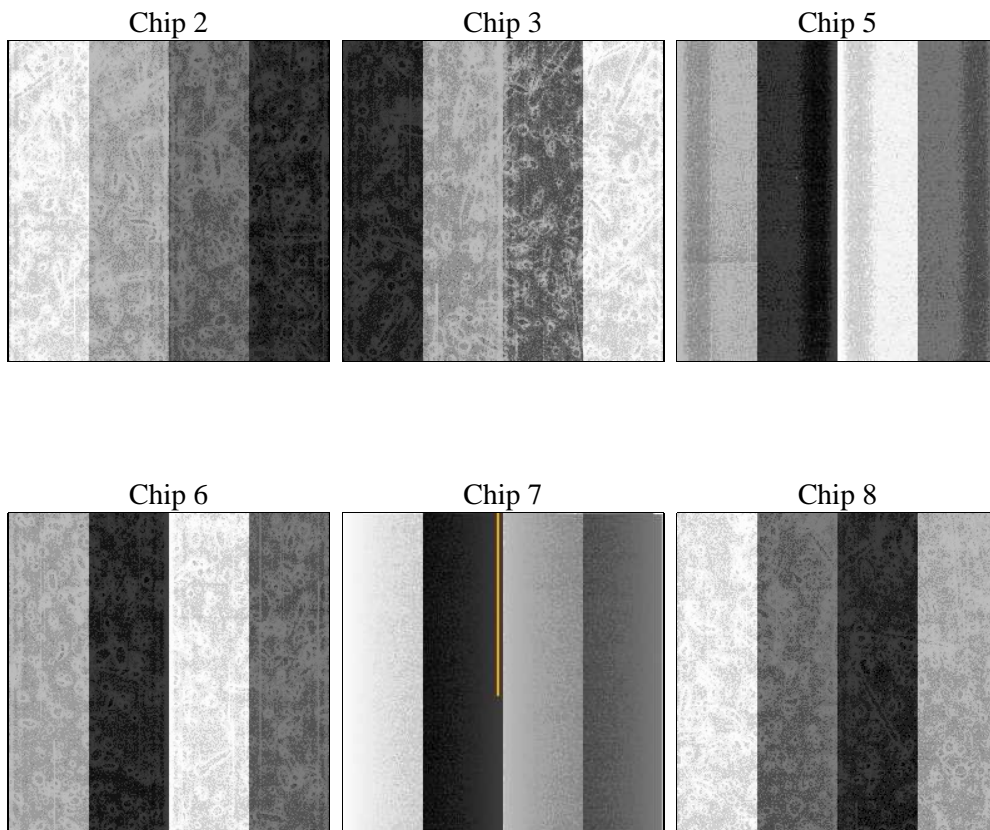
2 OBI

2.1 OBI

2.1.1 Images



2.1.2 Bias



2.1.3 Parameters

obi_num	0	Obi number	sched_exp_time	40300.000000	[s] Scheduled observation exposure time
ascdsver	8.4.5	Processing system revision	ontime	40095.918096945	Sum of GTIs [s]
caldbver	4.5.1.1	 	ontime2	40089.436116651	Sum of GTIs [s]
date	2012-08-29T06:50:00	Date and time of file creation	ontime3	40082.954206169	Sum of GTIs [s]
revision	4	Processing version of data	ontime5	40092.677076876	Sum of GTIs [s]
			ontime6	40092.677076876	Sum of GTIs [s]
			ontime7	40095.918096945	Sum of GTIs [s]
			ontime8	40089.436286181	Sum of GTIs [s]
			l1events	1993283	Number of level 1 events

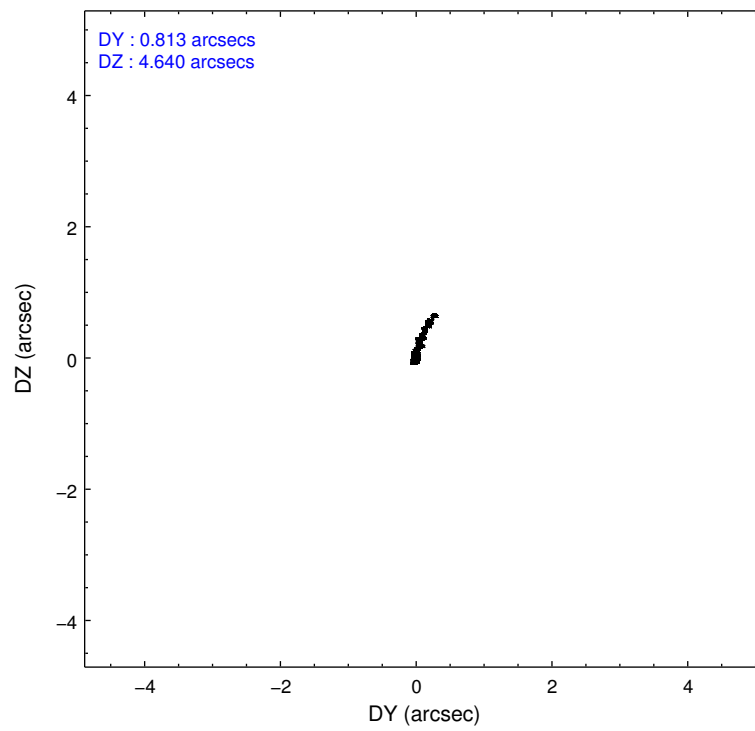
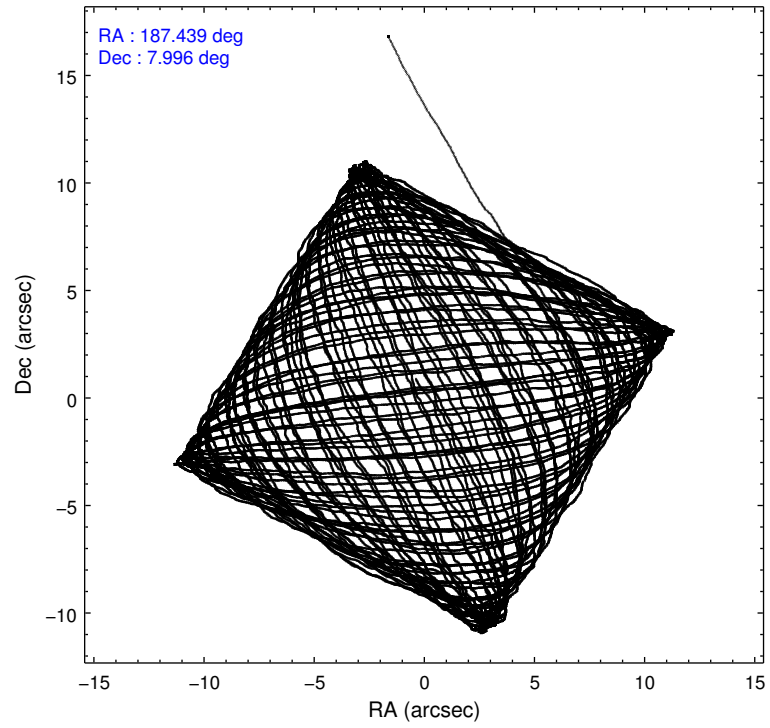
2.1.4 Events

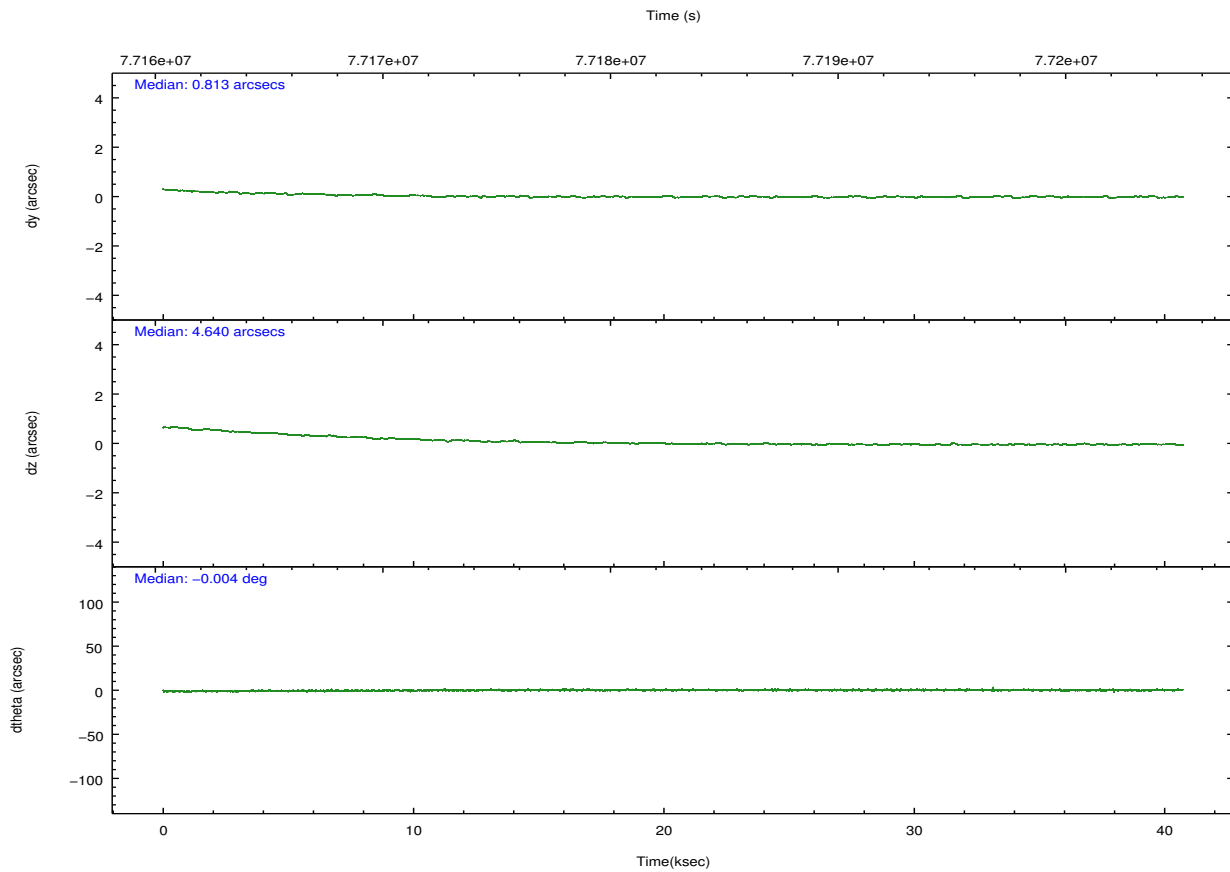
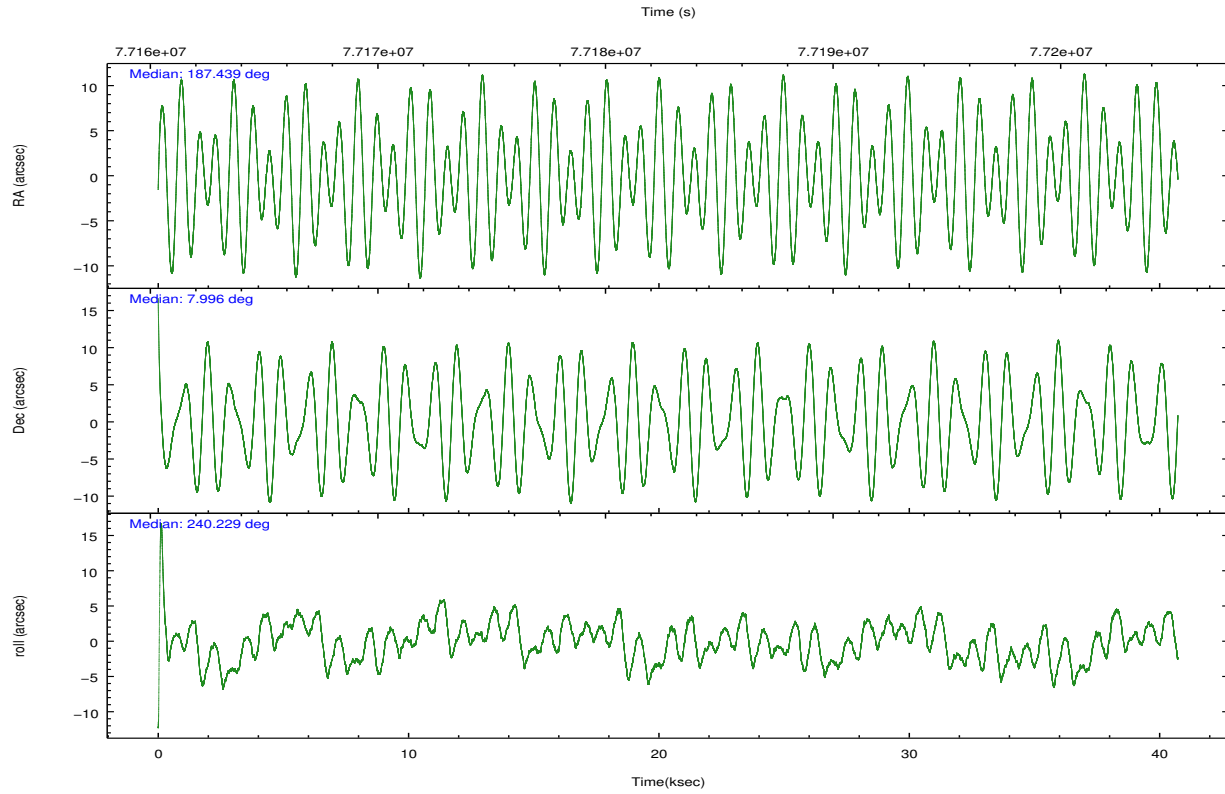
	ccd 2	ccd 3	ccd 5	ccd 6	ccd 7	ccd 8		ccd 2	ccd 3	ccd 5	ccd 6	ccd 7	ccd 8
level 1 events	269615	258696	368693	287002	415848	393429	grade 0 events	18038	16891	43187	37858	50609	51673
rejected events	230611	220925	174001	225076	165657	254993		6%	6%	11%	13%	12%	13%
rejected %	85%	85%	47%	78%	39%	64%	grade 1 events	126	142	723	205	351	394
								0%	0%	0%	0%	0%	0%
							grade 2 events	8662	8676	50426	10417	56534	21268
								3%	3%	13%	3%	13%	5%
							grade 3 events	2674	2699	9599	3191	26182	21676
								0%	1%	2%	1%	6%	5%
							grade 4 events	3050	2876	9078	3401	25587	19356
								1%	1%	2%	1%	6%	4%
							grade 5 events	7545	8179	24951	9341	28415	12183
								2%	3%	6%	3%	6%	3%
							grade 6 events	6582	6632	82422	7068	91299	24470
								2%	2%	22%	2%	21%	6%
							grade 7 events	222938	212601	148307	215521	136871	242409
								82%	82%	40%	75%	32%	61%

2.2 Compared Parameters

Parameter	Planned	Actual	Parameter	Planned	Actual
Instrument	ACIS	ACIS	Obspar format version number	7	7
Detector	ACIS-235678	ACIS-235678	Obspar file type	PREDICTED	ACTUAL
Grating	NONE	NONE	Obspar update status	NONE	UPDATED
Data mode	VFAINT	VFAINT	Number of optional ACIS chips dropped	0	0
Observation mode	POINTING	POINTING	On-chip summing requested	N	N
[deg] Pointing RA	187.438668	187.4389007039326	Subarray requested	NONE	NONE
[deg] Pointing Dec	8.023412	7.995998778408703	Alternating exposures requested	N	N
[deg] Pointing Roll	240.079779	240.2363595680031	[s] Primary exposure time	0.000000	3.2
[s] Window start time (MET)	63072064.184000	63072064.184000			
[s] Window stop time (MET)	84153664.184000	84153664.184000			
[mm] SIM focus pos	-0.684267	-0.6828225247311905			
[mm] SIM defocus	0	0.001444936568705701			
[mm] SIM translation stage pos	-190.132523	-190.1425803651734			
[mm] SIM translation stage offset	0	0.01005778216563158			
[s] Observation start time (MET)	77162814.184000	77161730.991983			
Observation start date	2000-06-12T02:05:50	2000-06-12T01:48:50			
[s] Observation end time (MET)	77203114.184000	77203909.743536			
Observation end date	2000-06-12T13:17:30	2000-06-12T13:31:49			
Read mode	TIMED	TIMED			

2.3 Aspect



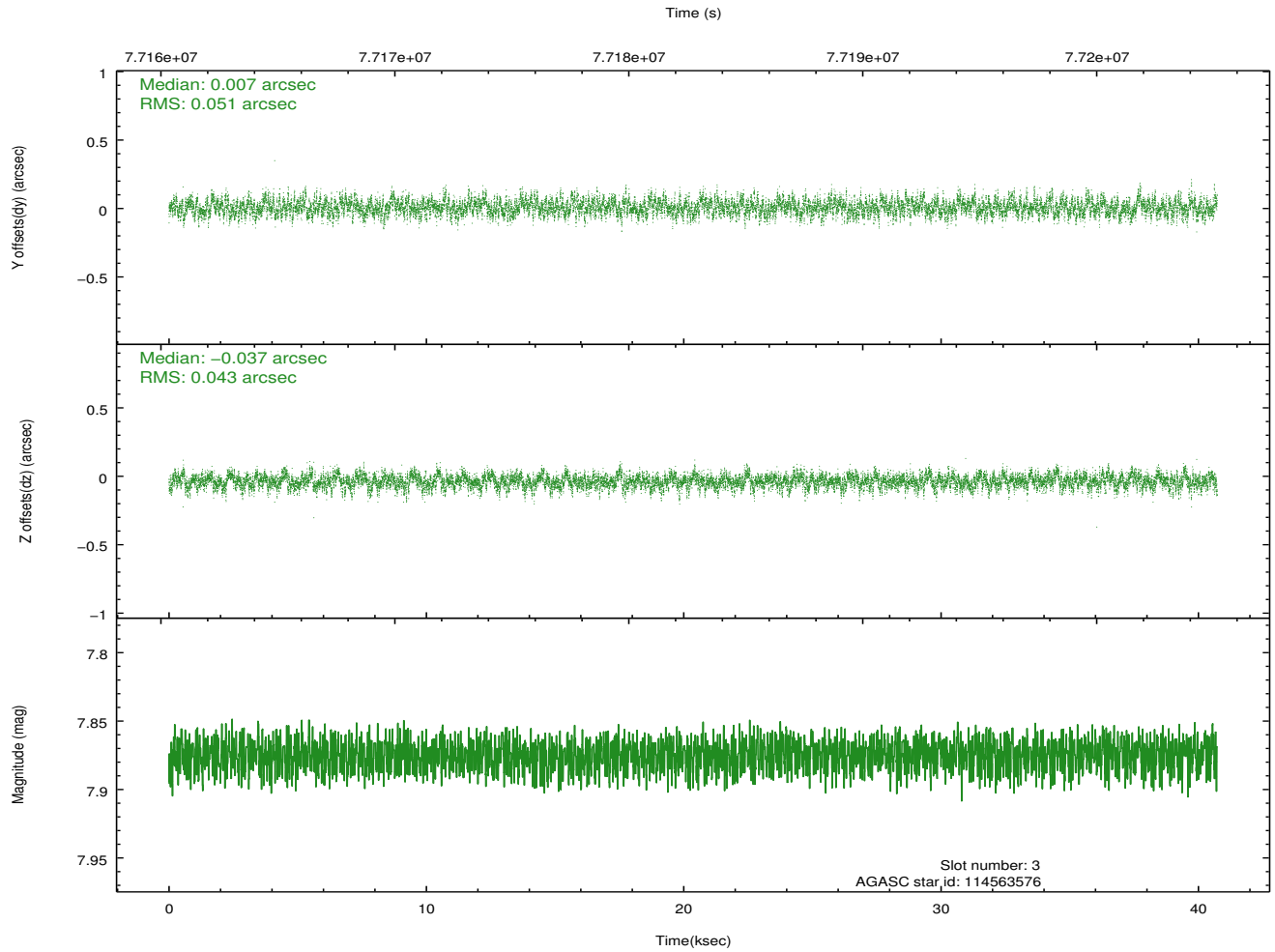
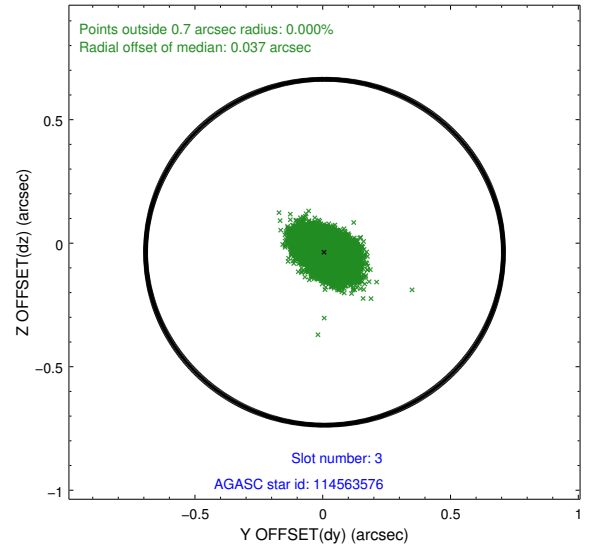
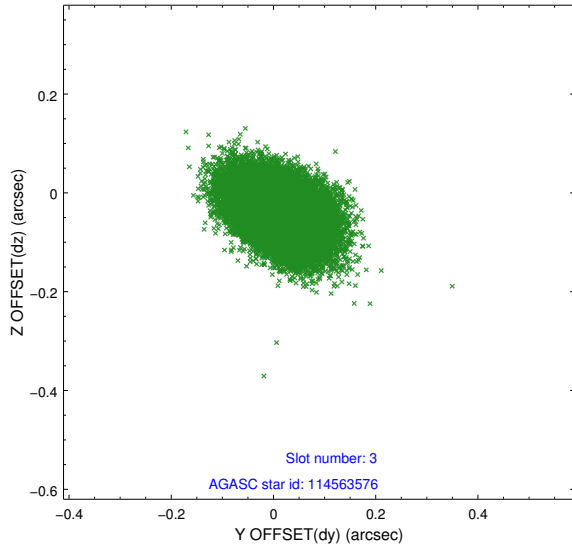


Slot Statistics

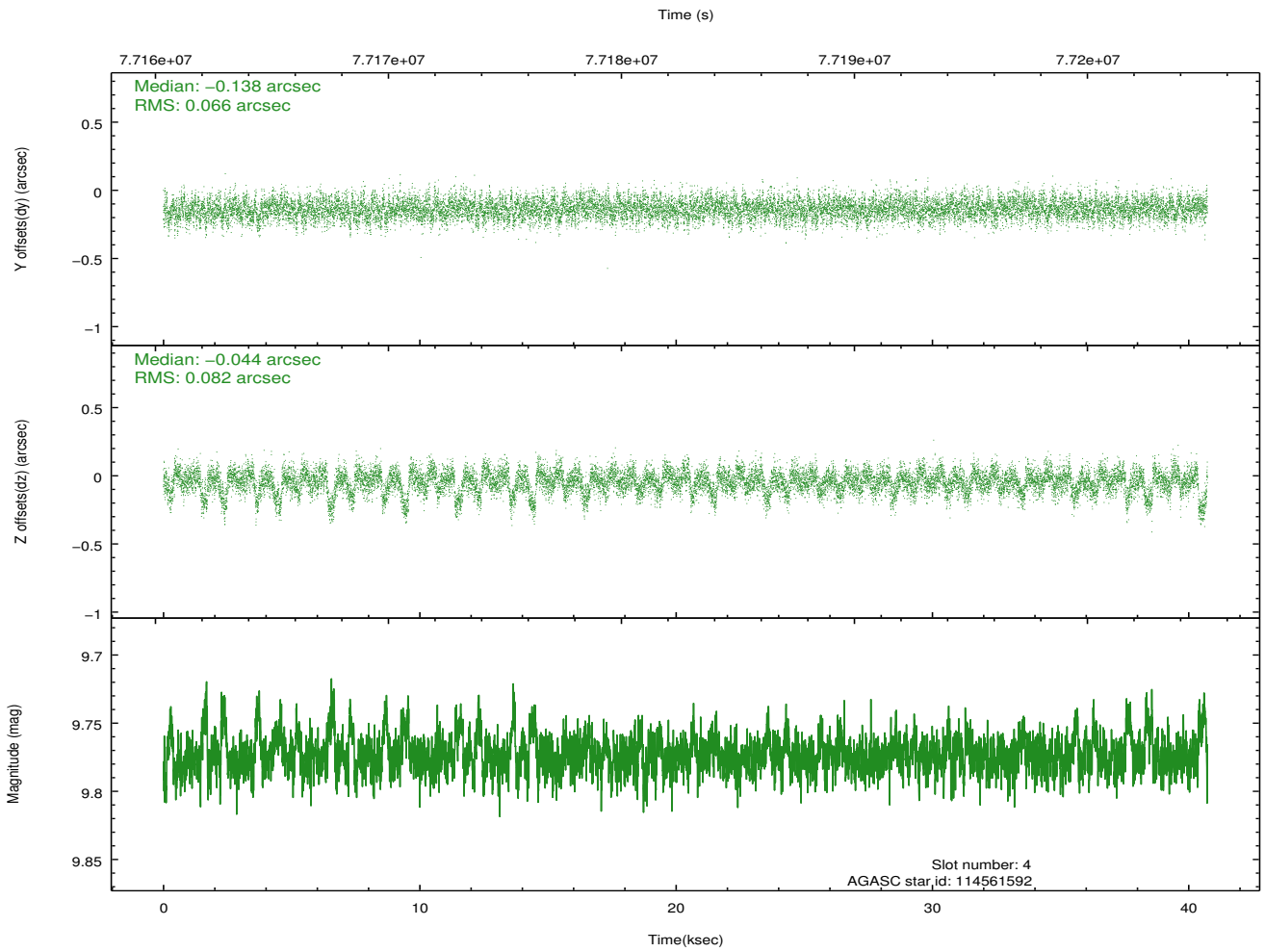
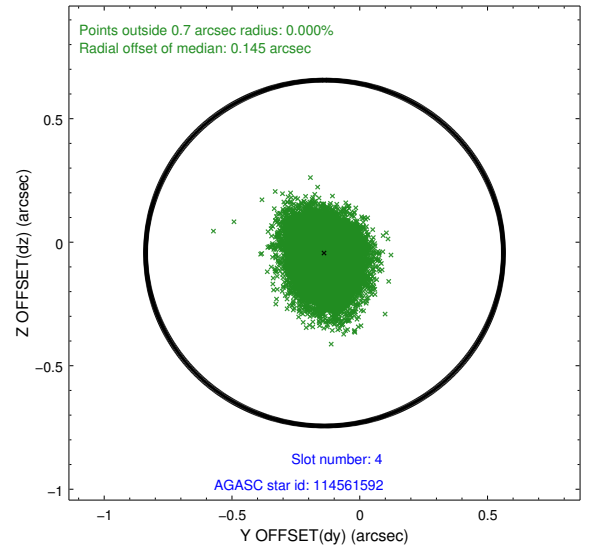
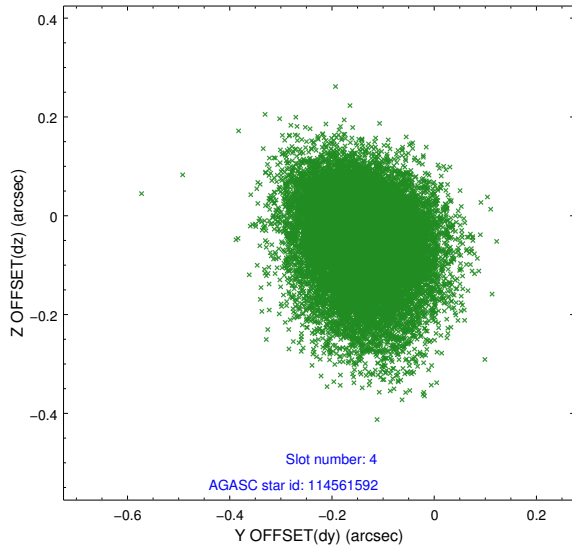
slot	status	id	mag	n_pts	med_dy	med_dz	dr1	dr2	ra	dec	mean_y	mean_z
0	FID	ACIS-S-2	7.11	9932	-0.027	-0.025	0.006	0.010	0.000000	0.000000	-753.46	-1725.80
1	FID	ACIS-S-4	7.21	9932	0.000	0.011	0.007	0.011	0.000000	0.000000	2159.85	182.68
2	FID	ACIS-S-6	7.35	9932	-0.001	0.021	0.008	0.014	0.000000	0.000000	408.59	820.12
3	GUIDE	114563576	7.87	19864	0.007	-0.037	0.070	0.118	186.867039	8.012388	1050.97	-1747.19
4	GUIDE	114561592	9.77	19858	-0.138	-0.044	0.110	0.188	187.709505	8.445382	-1796.96	77.53
5	GUIDE	114563648	9.81	19848	0.233	-0.048	0.106	0.181	187.009208	7.938475	1029.50	-1175.12
6	UNUSED		0.00	0	0.000	0.000	0.000	0.000	0.000000	0.000000	0.00	0.00
7	GUIDE	114562392	10.06	19852	-0.103	0.136	0.160	0.265	187.662769	8.522526	-1954.41	-205.13

2.4 Star Slots

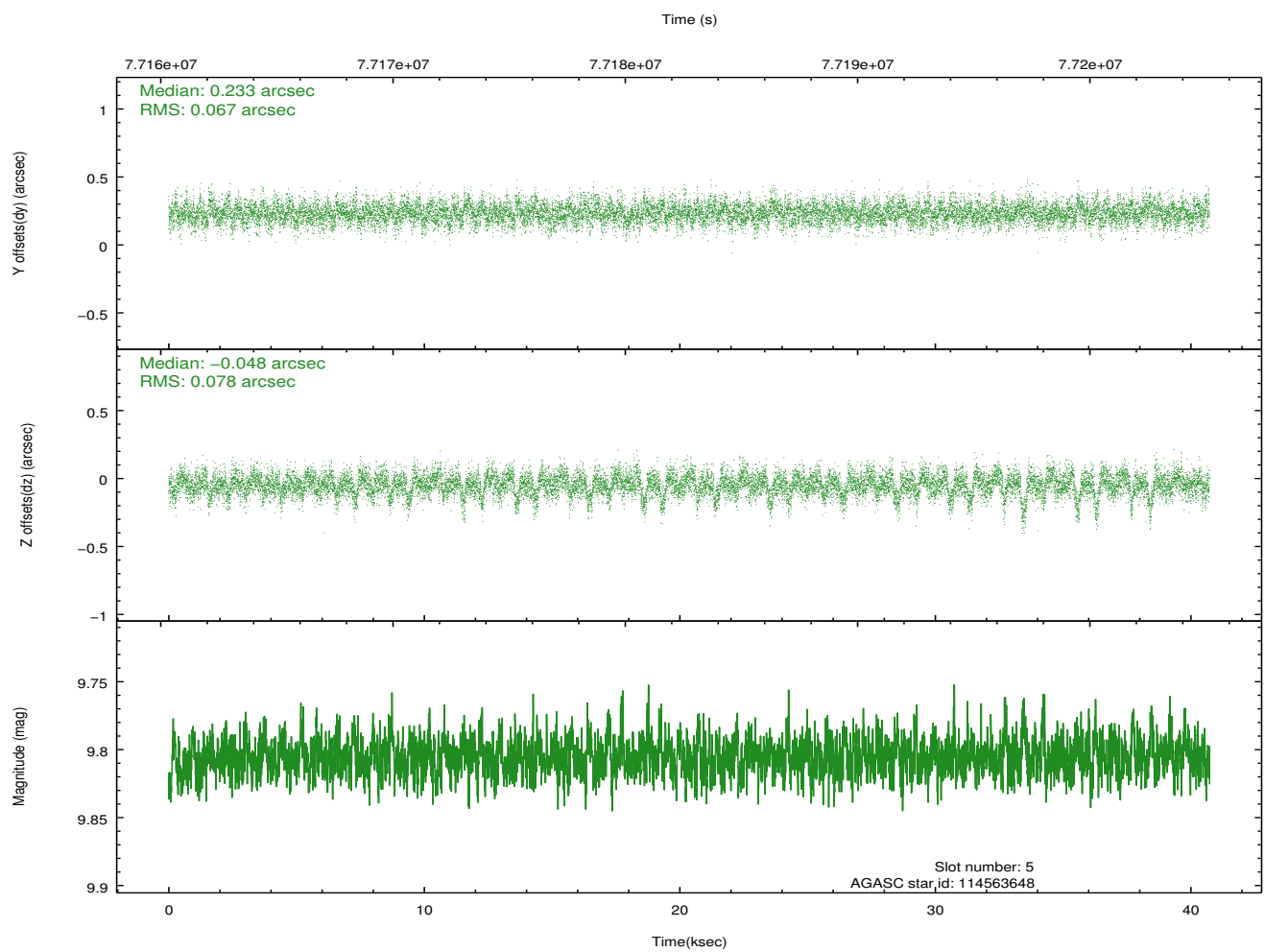
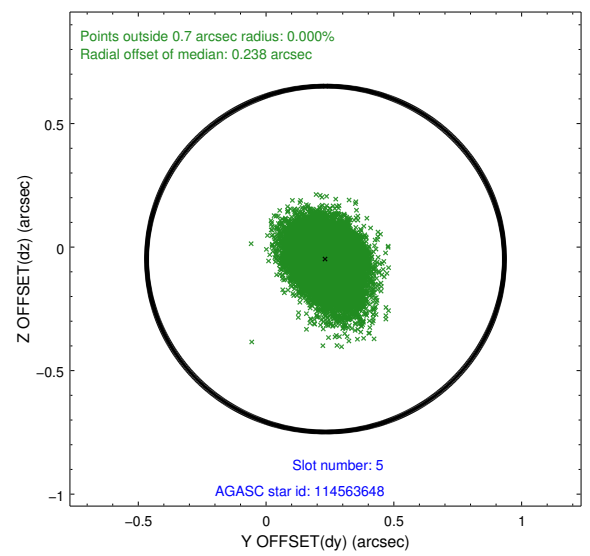
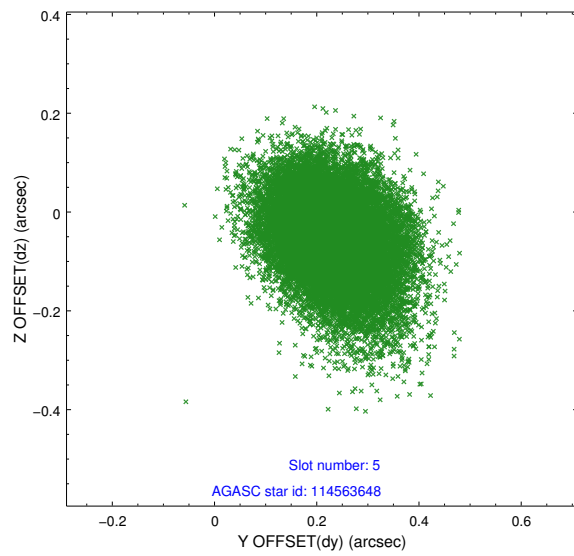
2.4.1 Slot 3



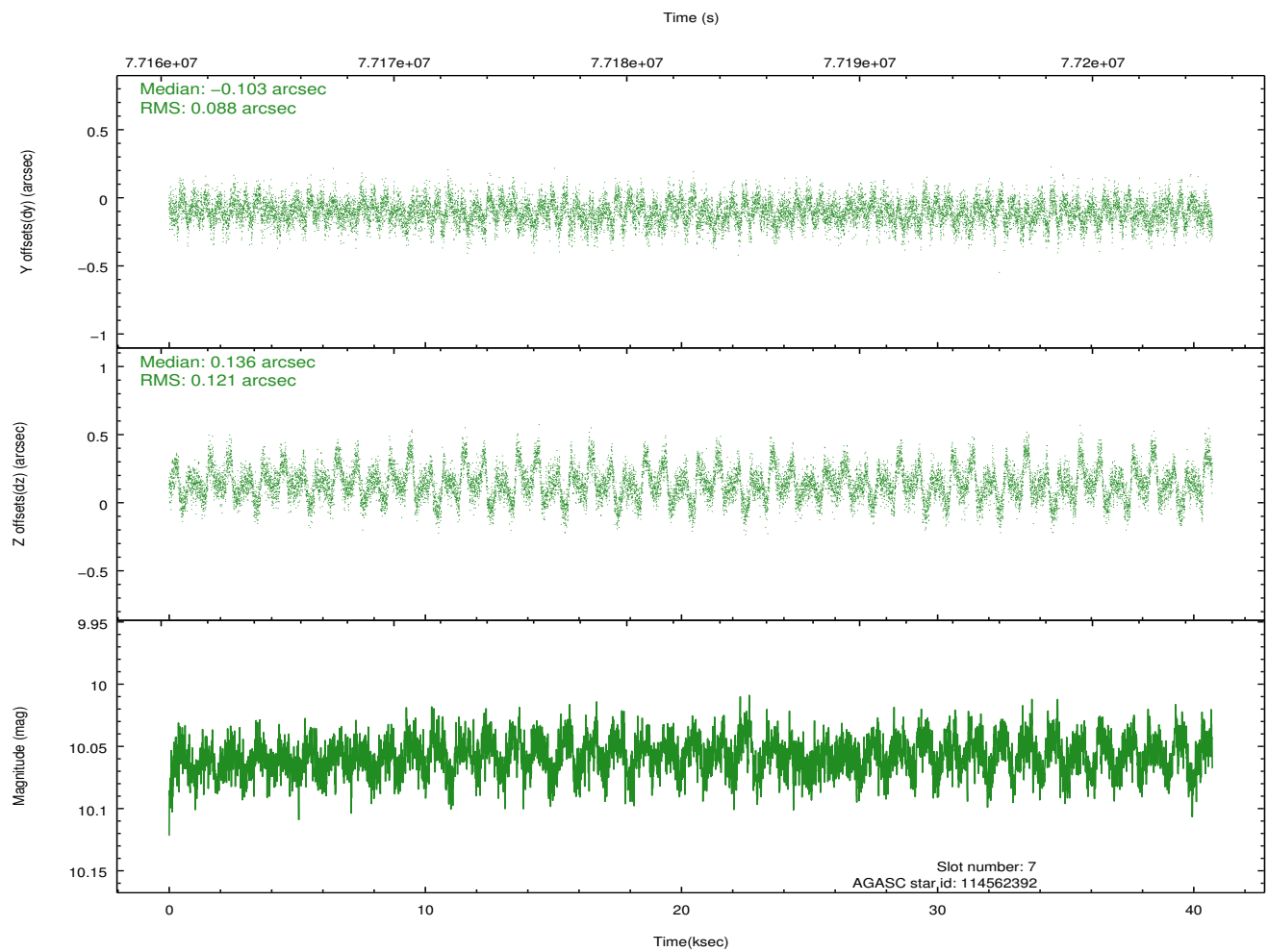
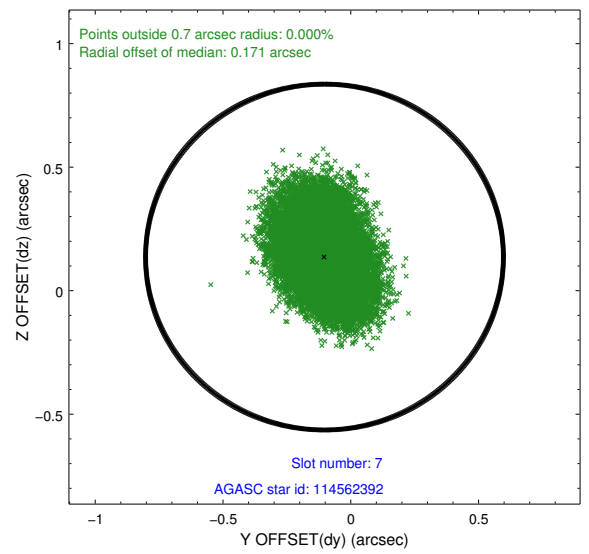
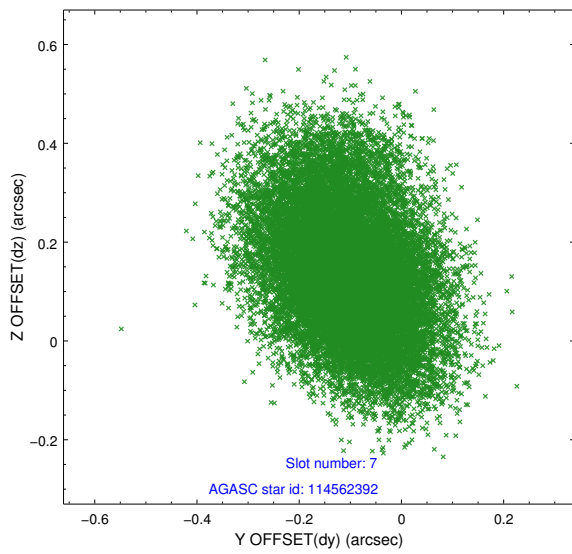
2.4.2 Slot 4



2.4.3 Slot 5

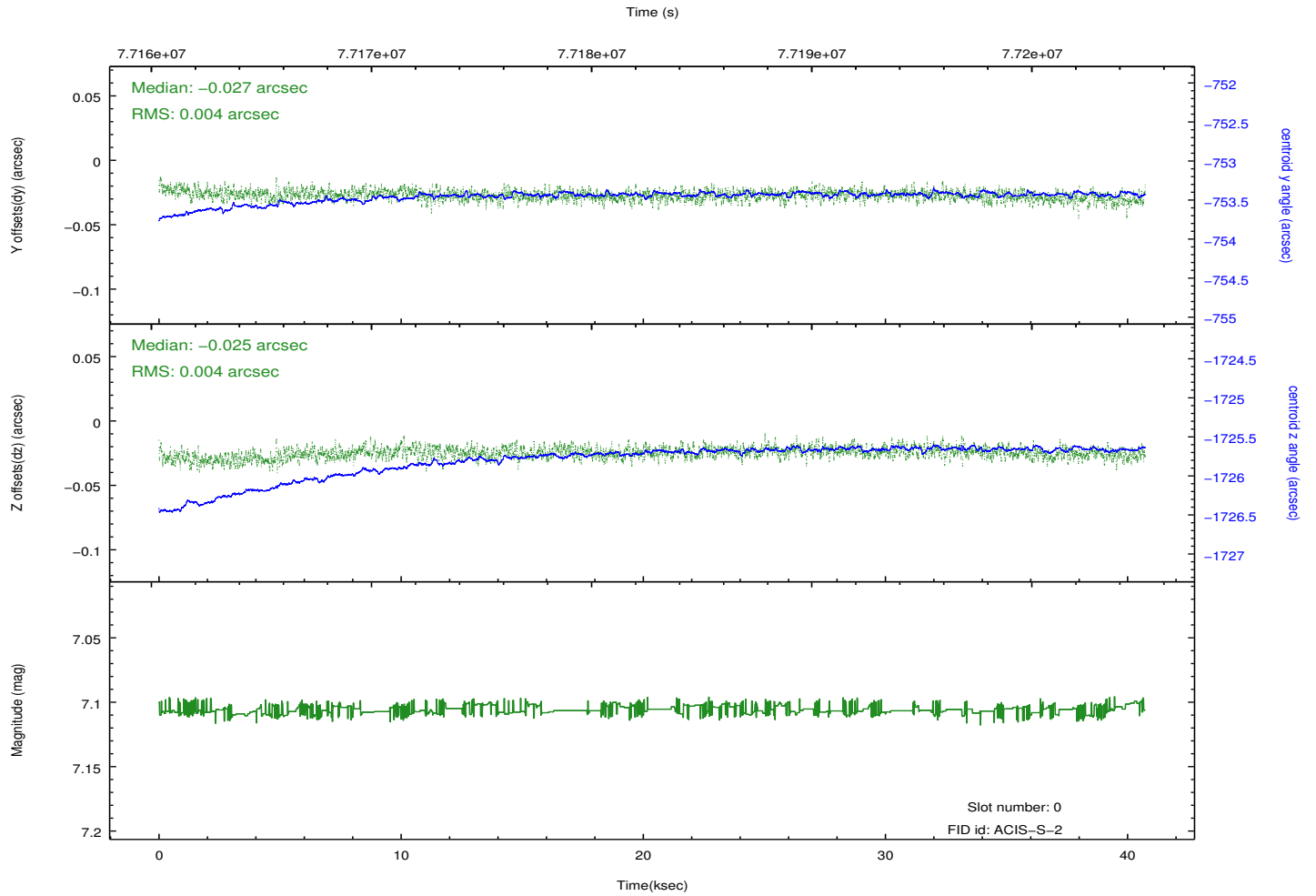
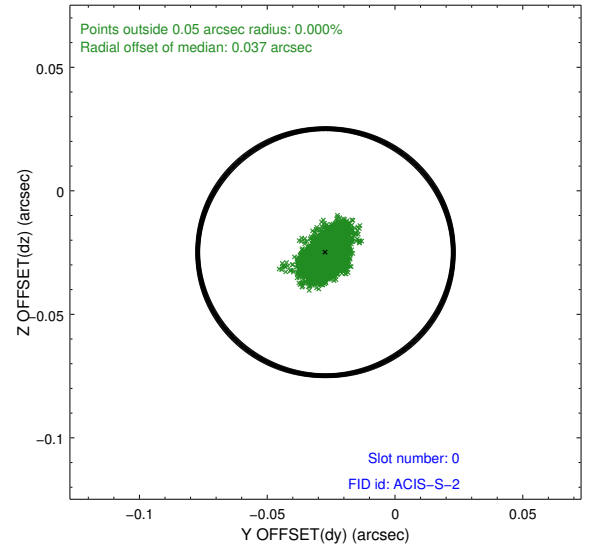
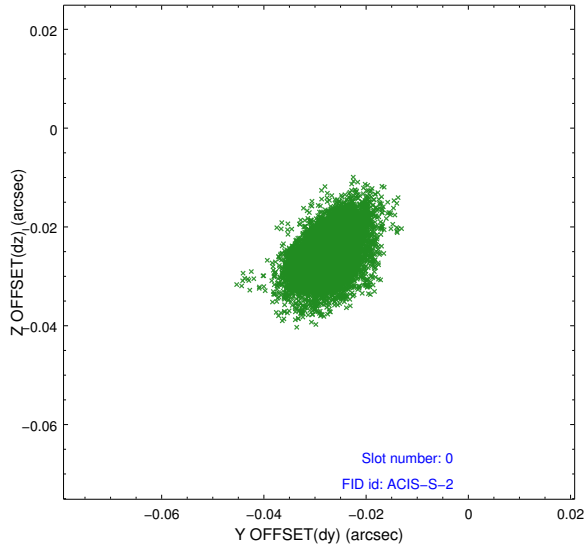


2.4.4 Slot 7

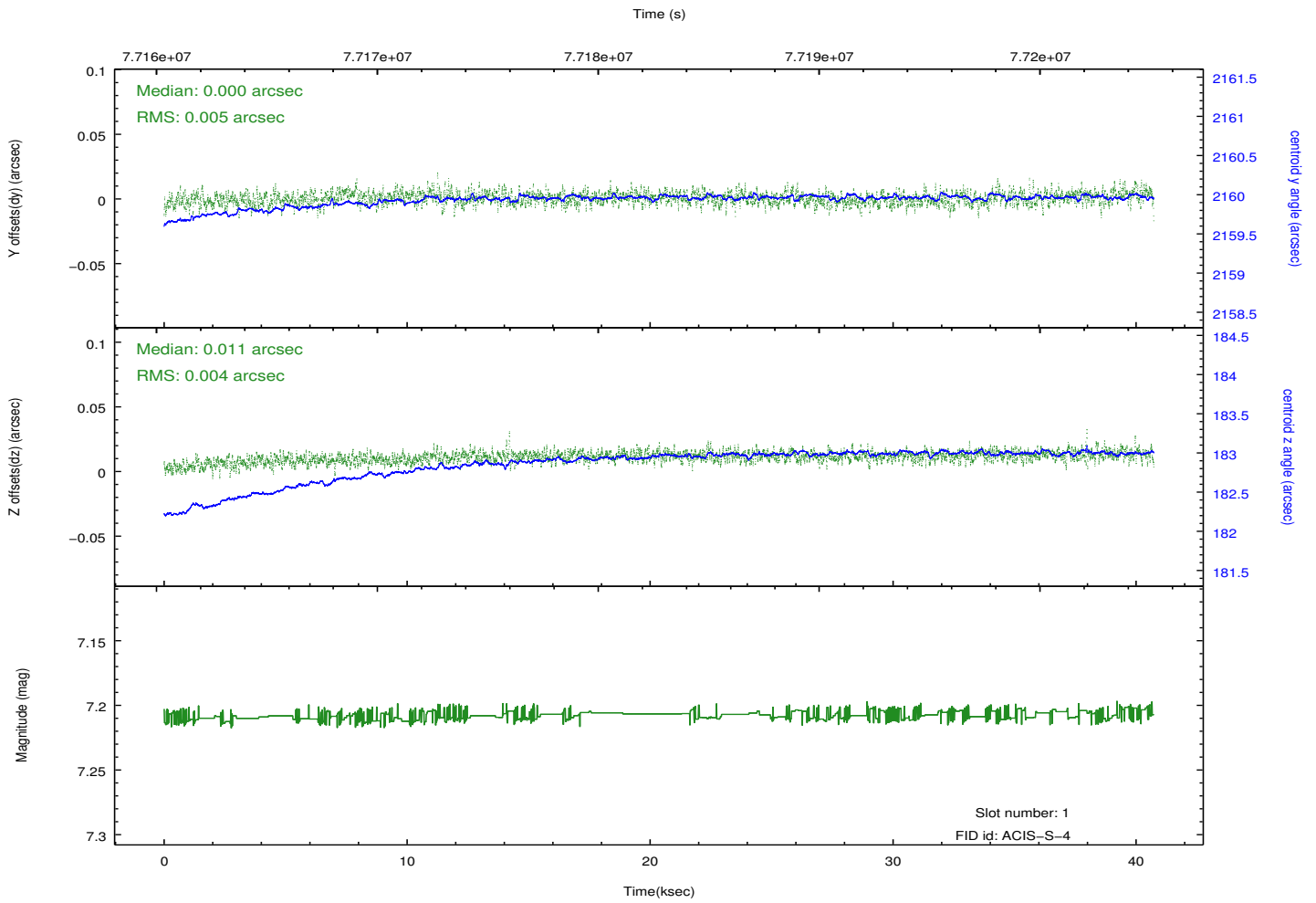
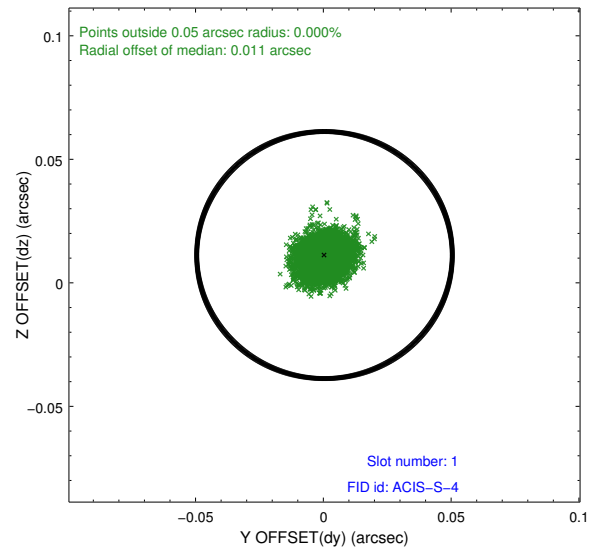
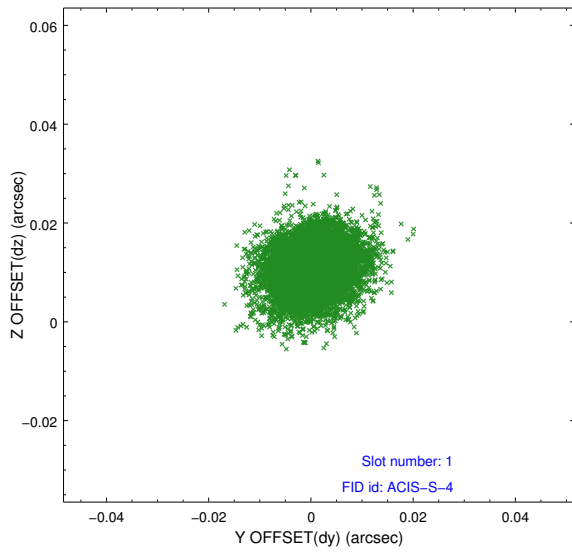


2.5 FID Slots

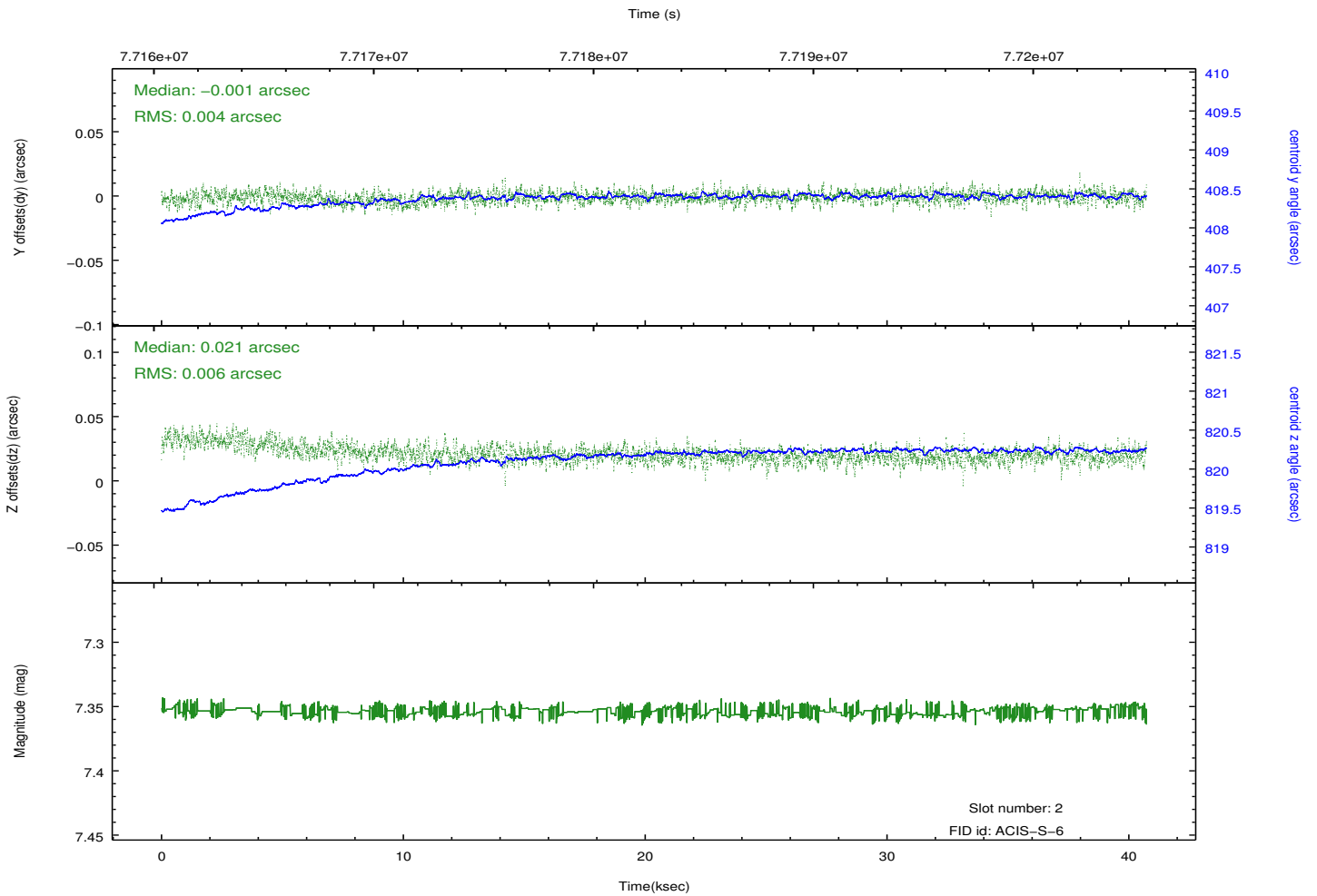
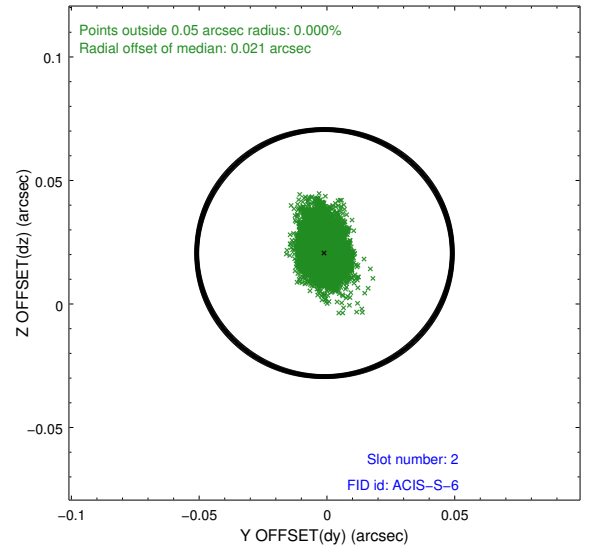
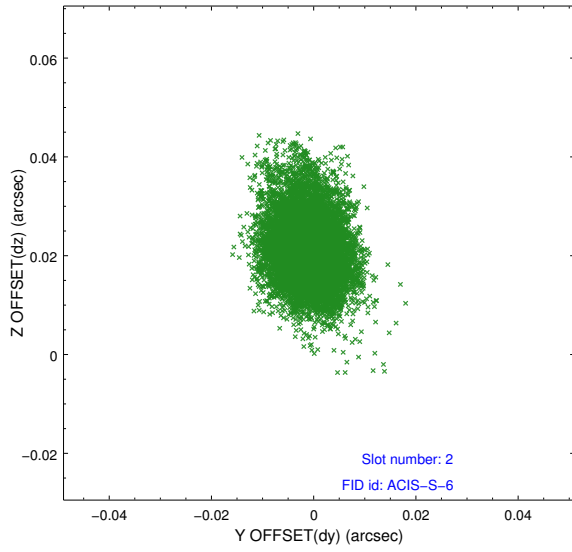
2.5.1 Slot 0



2.5.2 Slot 1



2.5.3 Slot 2



A Summary

A.1 Status

V&V Scientist	Beth Sundheim
V&V Date (YYYY-MM-DD)	2012.08.31
V&V Edition	1
V&V Disposition and Status	OK
V&V Charge Time	40.096

A.2 Comments

Window preference met.

Slot 6 was not utilized in this observation.