

V&V Reference Report

L2 ASCDS Version : 8.4.5

Observation 3221 - L2 Version 3
Chandra X-Ray Center

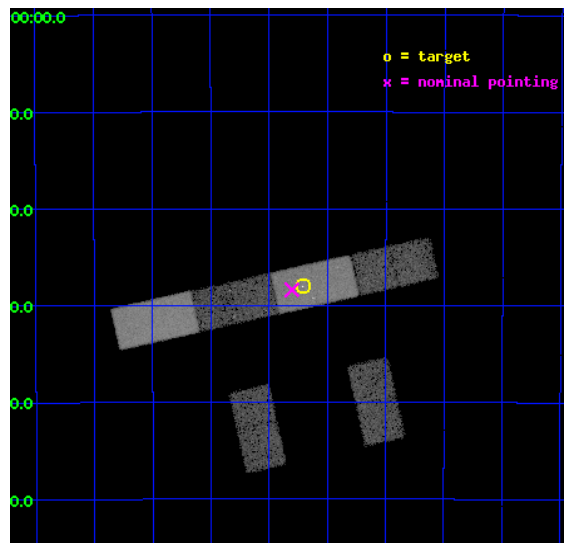
L2 Processing Date : Oct 15 2012

Contents

1	Front	2
2	OBI	3
2.1	OBI	3
2.1.1	Images	3
2.1.2	Bias	3
2.1.3	Parameters	4
2.1.4	Events	4
2.2	Compared Parameters	5
2.3	Aspect	6
2.4	Star Slots	9
2.4.1	Slot 3	9
2.4.2	Slot 4	10
2.4.3	Slot 5	11
2.4.4	Slot 6	12
2.4.5	Slot 7	13
2.5	FID Slots	14
2.5.1	Slot 0	14
2.5.2	Slot 1	15
2.5.3	Slot 2	16
A	Summary	17
A.1	Status	17
A.2	Comments	17

1 Front

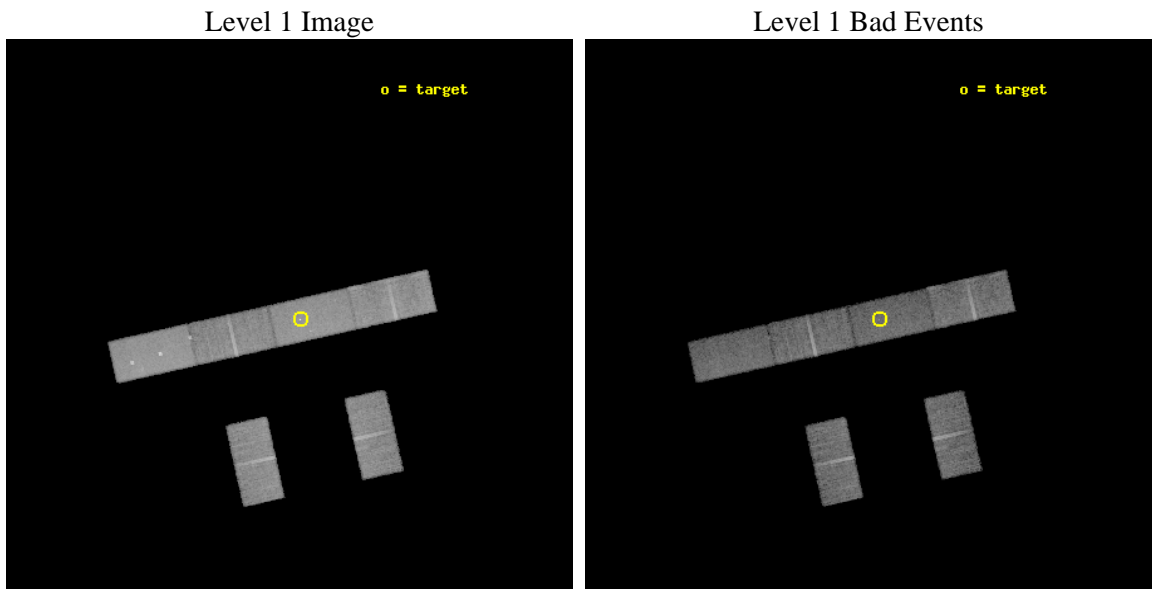
seq_num	800221	Sequence number
obs_id	3221	Observation id
title	CHANDRA OBSERVATIONS OF A Z=0.84 GALAXY CLUSTER AND ITS CENTRAL HST QSO	Proposal title
observer	Dr Robert Schmidt	Principal investigator
object	Q0037-3544	Source name
dtcycle	0	
cycle	P	events from which exps? Prim/Second/Both
ra_targ	9.926833	Observer's specified target RA [deg]
dec_targ	-35.466944	Observer's specified target Dec [deg]
ra_nom	9.9512005805799	Nominal RA [deg]
dec_nom	-35.473165411472	Nominal Dec [deg]
roll_nom	347.37813300032	Nominal Roll [deg]
revision	3	Processing version of data
ontime	18378.699871123	Sum of GTIs [s]
livetime	17945.474992481	Livetime [s]
ontime2	18378.699871123	Sum of GTIs [s]
ontime3	18378.699871123	Sum of GTIs [s]
ontime5	18378.699871123	Sum of GTIs [s]
ontime6	18378.699871123	Sum of GTIs [s]
ontime7	18378.699871123	Sum of GTIs [s]
ontime8	18378.699871123	Sum of GTIs [s]
l2events	100167	Number of level 2 events



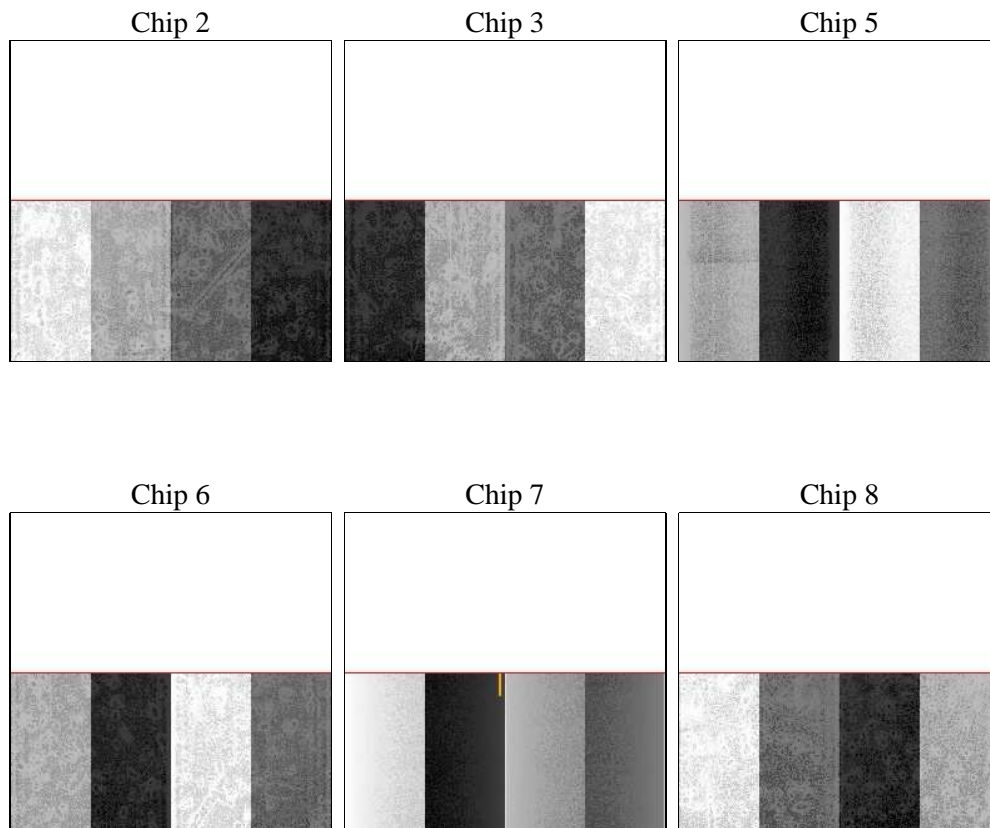
2 OBI

2.1 OBI

2.1.1 Images



2.1.2 Bias



2.1.3 Parameters

obi_num	0	Obi number	sched_exp_time	18000.000000	[s] Scheduled observation exposure time
ascdsver	8.4.5	Processing system revision	ontime	18378.699871123	Sum of GTIs [s]
caldbver	4.5.2	 	ontime2	18378.699871123	Sum of GTIs [s]
date	2012-10-15T13:17:44	Date and time of file creation	ontime3	18378.699871123	Sum of GTIs [s]
revision	3	Processing version of data	ontime5	18378.699871123	Sum of GTIs [s]
			ontime6	18378.699871123	Sum of GTIs [s]
			ontime7	18378.699871123	Sum of GTIs [s]
			ontime8	18378.699871123	Sum of GTIs [s]
			l1events	452319	Number of level 1 events

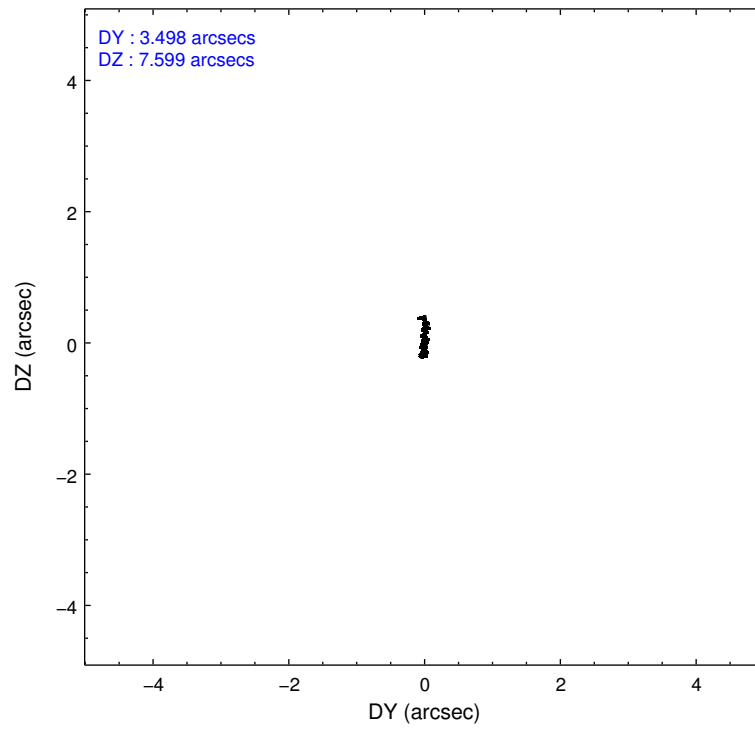
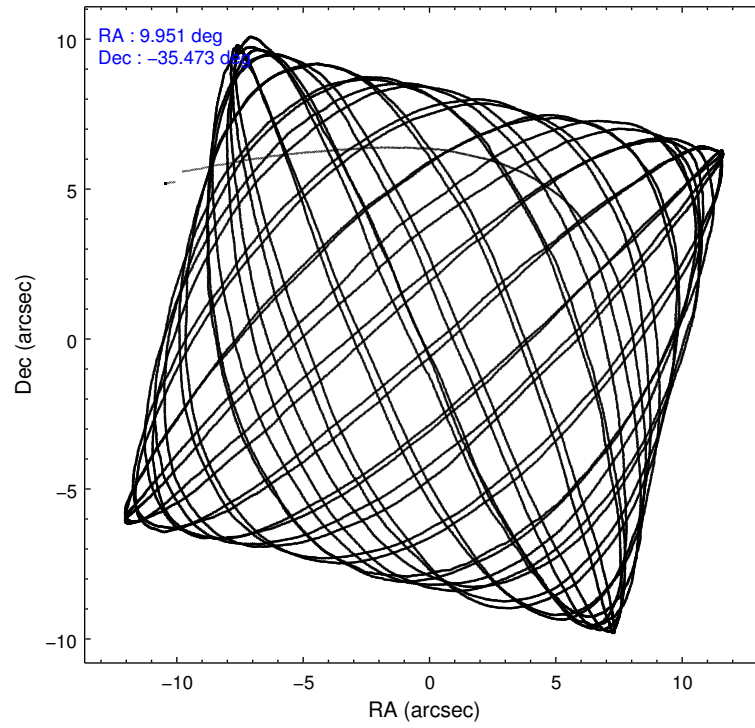
2.1.4 Events

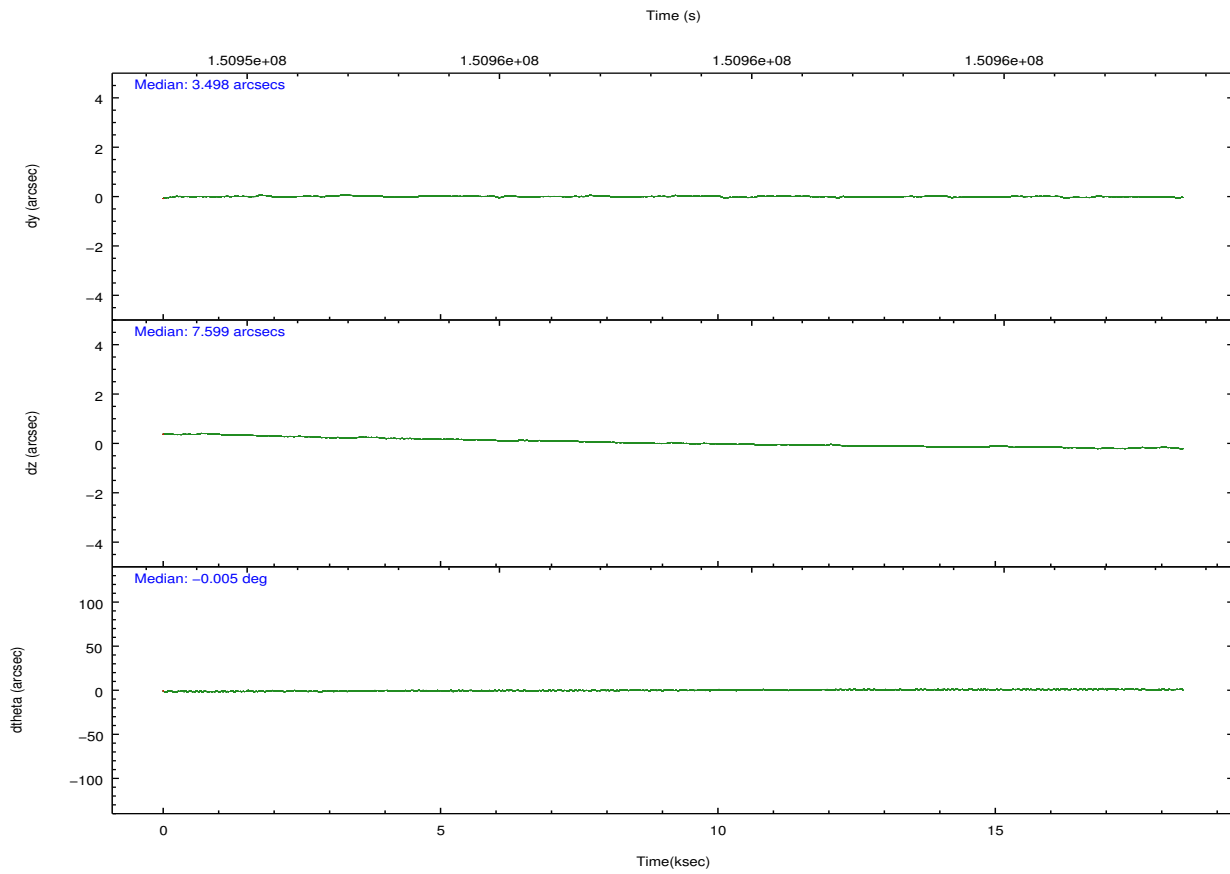
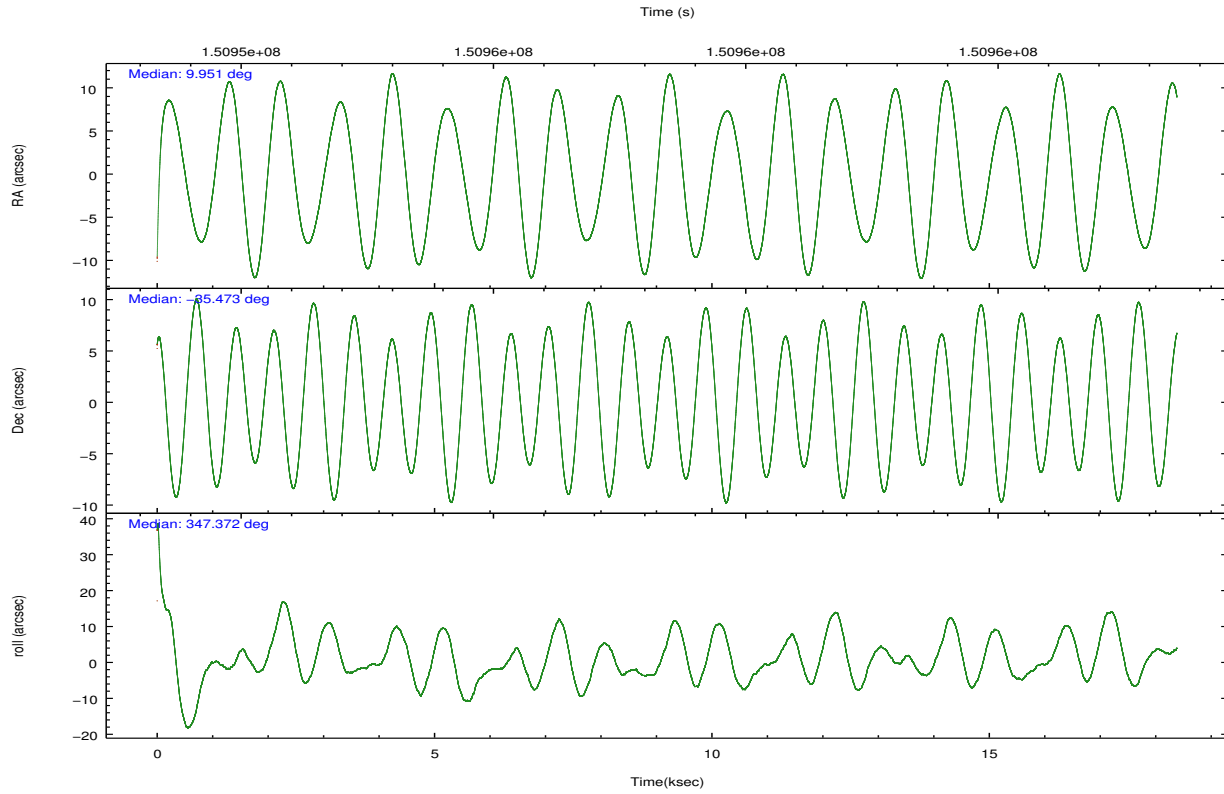
	ccd 2	ccd 3	ccd 5	ccd 6	ccd 7	ccd 8		ccd 2	ccd 3	ccd 5	ccd 6	ccd 7	ccd 8
level 1 events	68768	62961	92418	64489	82589	81094	grade 0 events	3224	3006	7430	2932	3870	4941
rejected events	61078	55745	48022	57013	46695	64784		4%	4%	8%	4%	4%	6%
rejected %	88%	88%	51%	88%	56%	79%	grade 1 events	30	37	284	21	86	35
								0%	0%	0%	0%	0%	0%
							grade 2 events	1589	1282	11336	1479	7204	3522
								2%	2%	12%	2%	8%	4%
							grade 3 events	839	893	2493	864	3465	1935
								1%	1%	2%	1%	4%	2%
							grade 4 events	808	822	2308	869	3432	1763
								1%	1%	2%	1%	4%	2%
							grade 5 events	2229	2370	7420	2634	7545	3370
								3%	3%	8%	4%	9%	4%
							grade 6 events	1246	1223	20900	1350	17978	4203
								1%	1%	22%	2%	21%	5%
							grade 7 events	58803	53328	40247	54340	39009	61325
								85%	84%	43%	84%	47%	75%

2.2 Compared Parameters

Parameter	Planned	Actual	Parameter	Planned	Actual
Instrument	ACIS	ACIS	Obspar format version number	7	7
Detector	ACIS-235678	ACIS-235678	Obspar file type	PREDICTED	ACTUAL
Grating	NONE	NONE	Obspar update status	NONE	UPDATED
Data mode	VFAINT	VFAINT	Number of optional ACIS chips dropped	0	0
Observation mode	POINTING	POINTING	On-chip summing requested	N	N
[deg] Pointing RA	9.919378	9.951200580579908	Subarray requested	CUSTOM	1/2
[deg] Pointing Dec	-35.481628	-35.47316541147224	Subarray start row	1	1
[deg] Pointing Roll	347.203010	347.3781330003184	Subarray row count	512	512
[mm] SIM focus pos	-0.684267	-0.6828225247311905	Alternating exposures requested	N	N
[mm] SIM defocus	0	0.001444936568705701	[s] Primary exposure time	0.000000	1.7
[mm] SIM translation stage pos	-183.992523	-183.9900508222561			
[mm] SIM translation stage offset	-6.14	-6.142471760751675			
[s] Observation start time (MET)	150949629.184000	150948562.13336			
Observation start date	2002-10-14T02:26:05	2002-10-14T02:09:22			
[s] Observation end time (MET)	150967629.184000	150968477.88418			
Observation end date	2002-10-14T07:26:05	2002-10-14T07:41:17			
Read mode	TIMED	TIMED			

2.3 Aspect



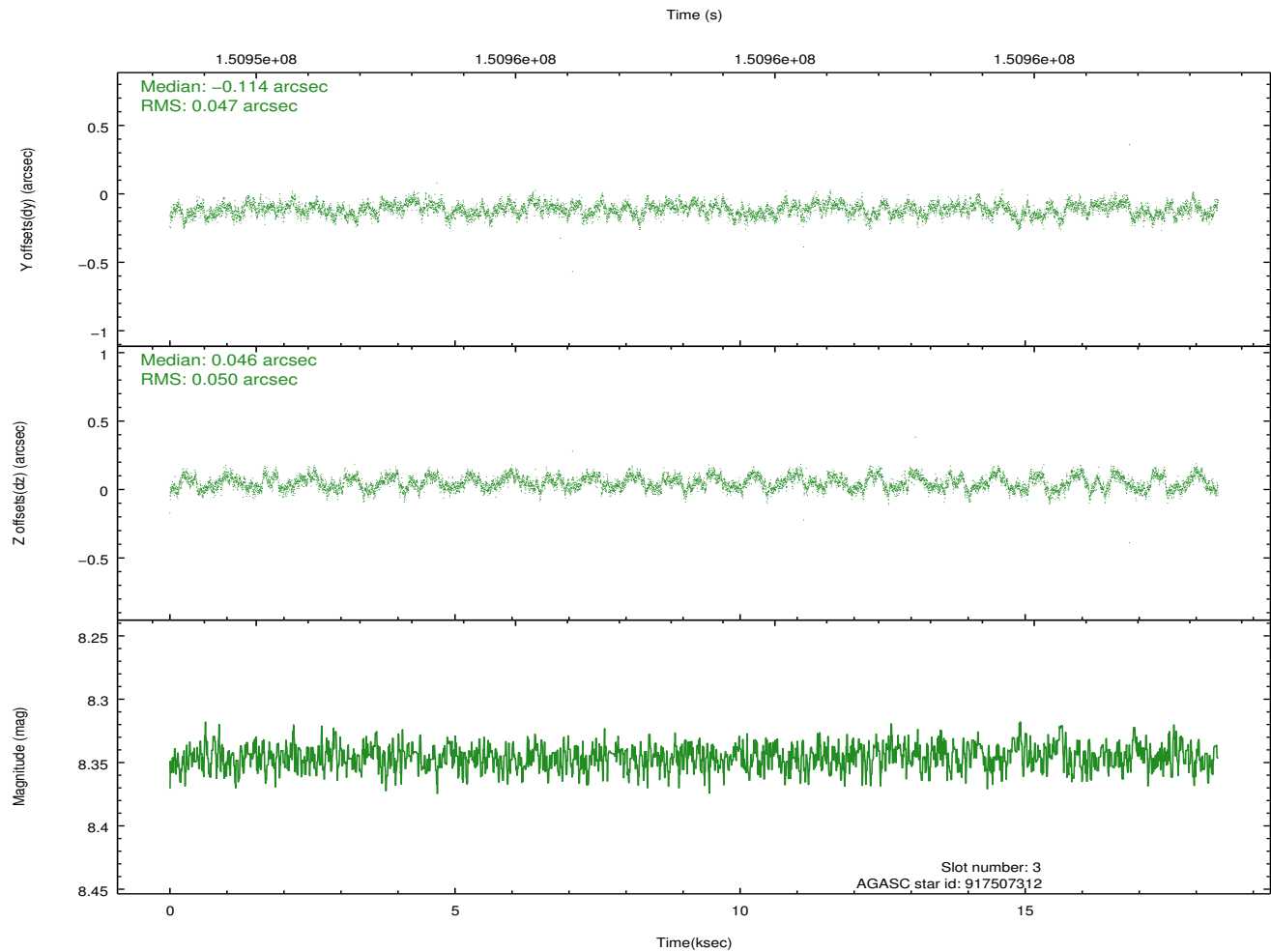
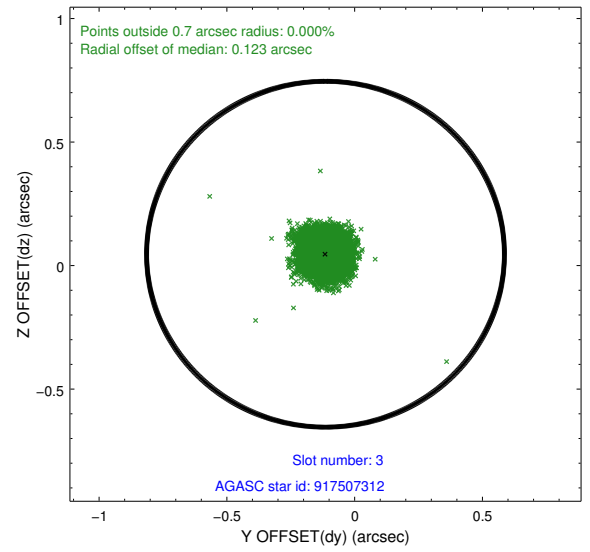
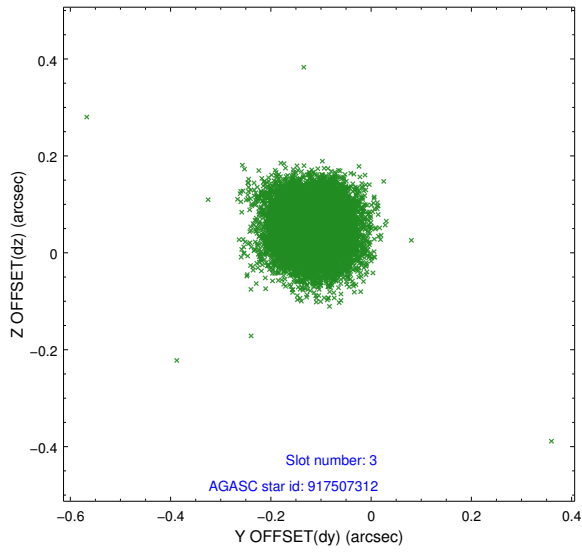


Slot Statistics

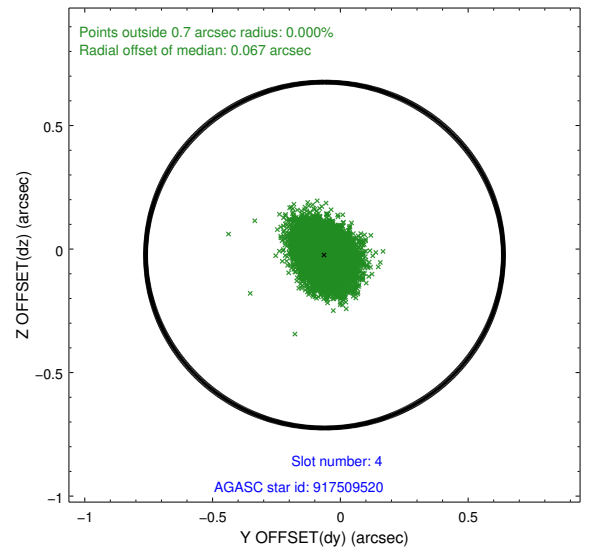
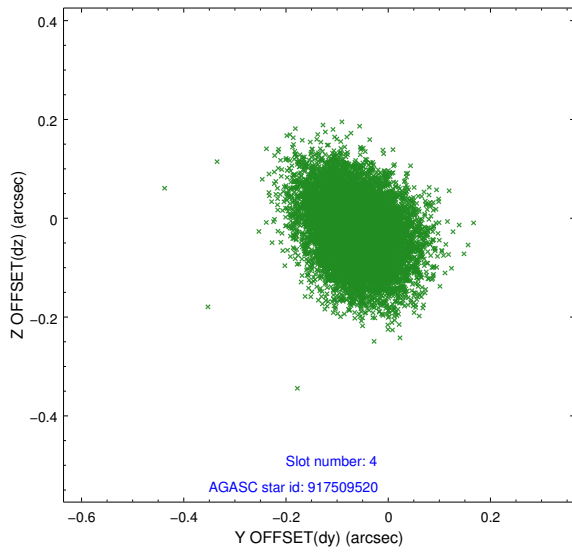
slot	status	id	mag	n_pts	med_dy	med_dz	dr1	dr2	ra	dec	mean_y	mean_z
0	FID	ACIS-S-2	7.09	4483	-0.057	-0.073	0.011	0.019	0.000000	0.000000	-755.74	-1855.51
1	FID	ACIS-S-4	7.19	4483	0.039	0.047	0.006	0.011	0.000000	0.000000	2157.50	52.88
2	FID	ACIS-S-5	7.23	4484	-0.013	0.034	0.010	0.016	0.000000	0.000000	-1808.29	46.71
3	GUIDE	917507312	8.35	8966	-0.114	0.046	0.073	0.113	9.328831	-35.420209	-1737.06	-173.50
4	GUIDE	917509520	9.24	8962	-0.062	-0.024	0.094	0.149	9.679818	-35.593919	-594.18	-550.71
5	GUIDE	917519224	10.15	8954	0.098	-0.012	0.202	0.312	10.630950	-35.384232	1960.72	797.08
6	GUIDE	917519312	10.11	8960	0.013	0.063	0.136	0.221	10.745904	-35.314785	2237.36	1113.74
7	GUIDE	917508728	8.16	8965	0.062	-0.063	0.067	0.105	9.719945	-35.944061	-197.31	-1752.92

2.4 Star Slots

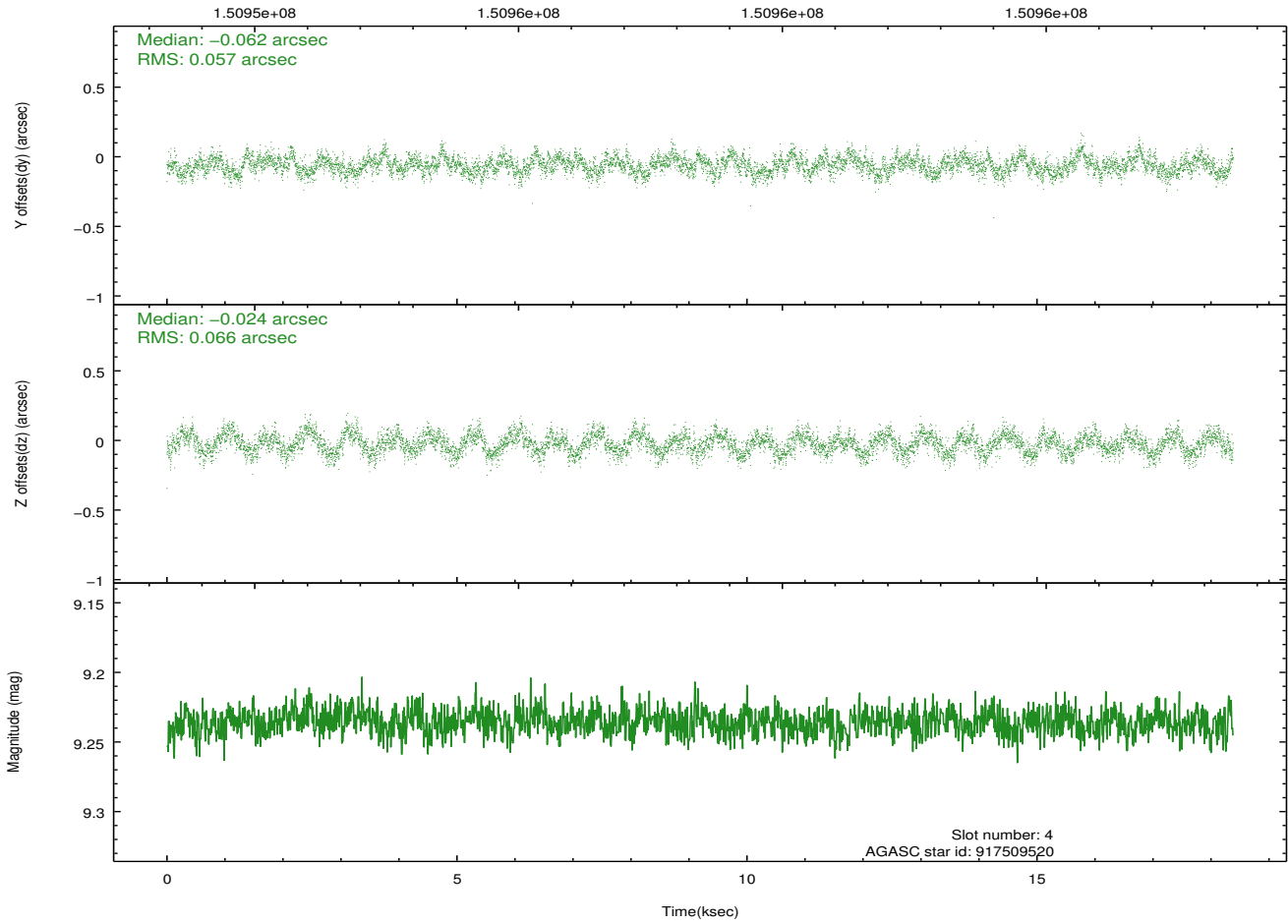
2.4.1 Slot 3



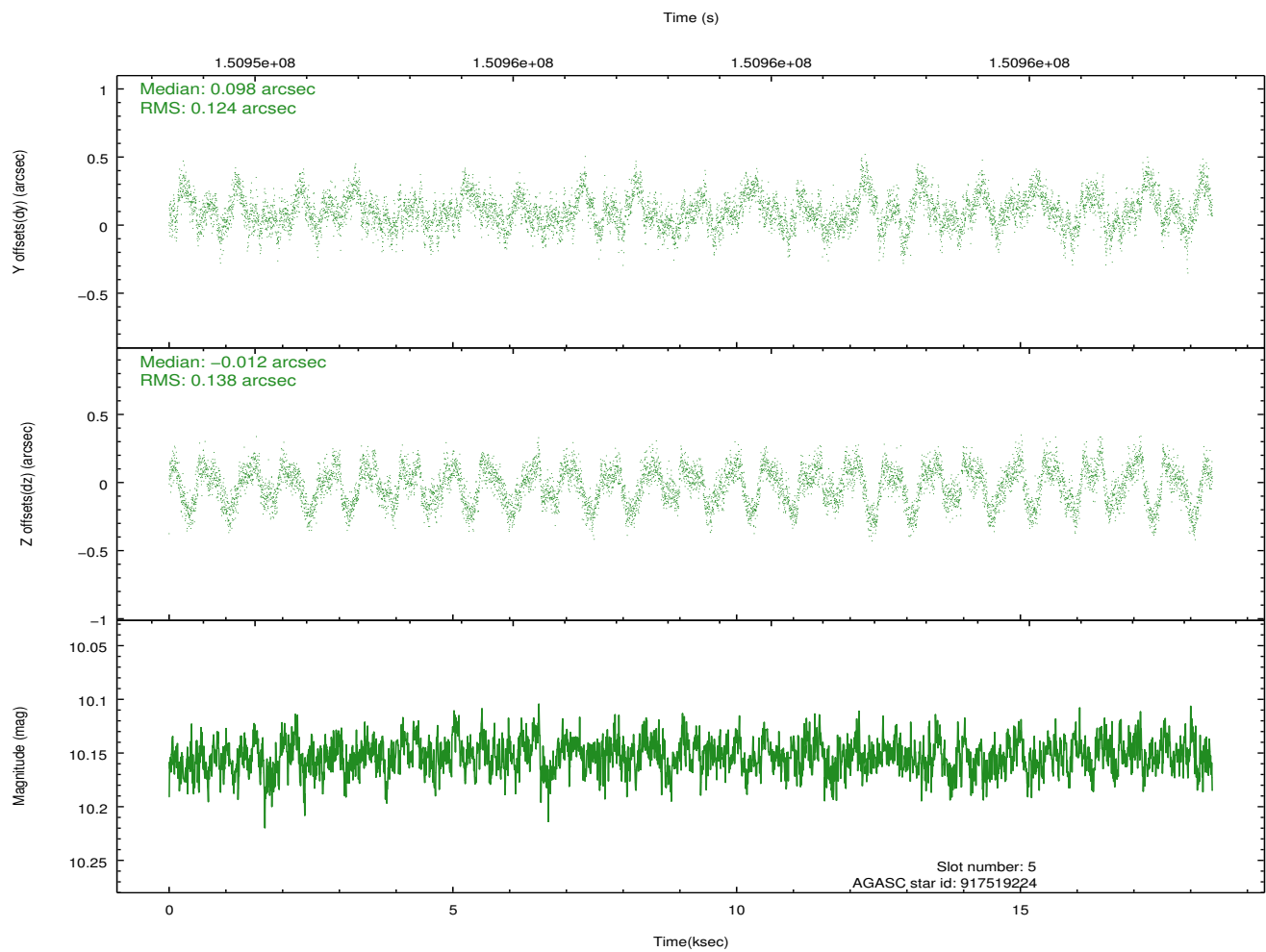
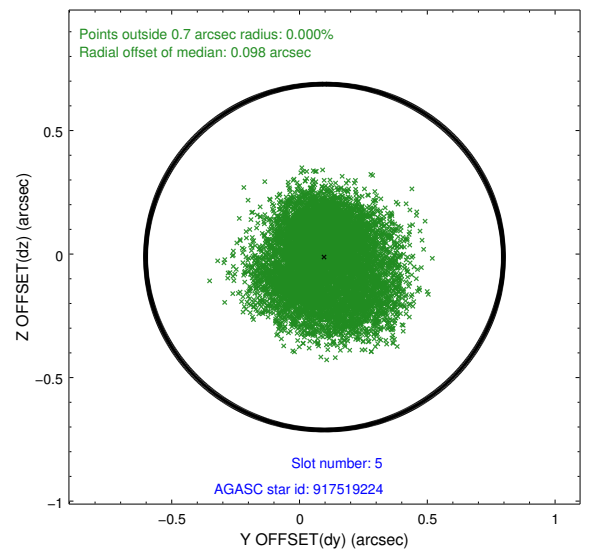
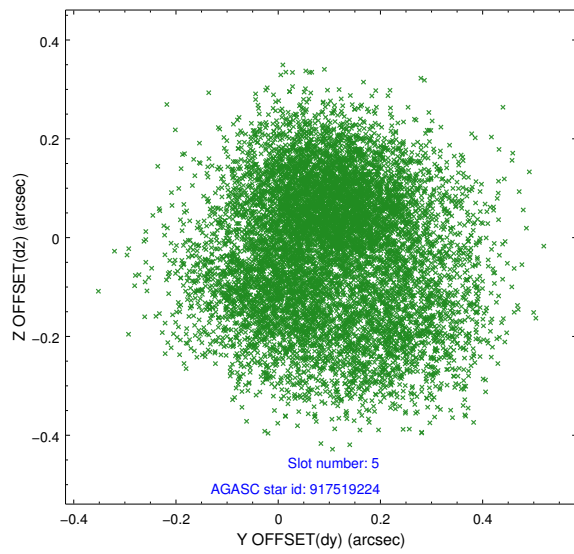
2.4.2 Slot 4



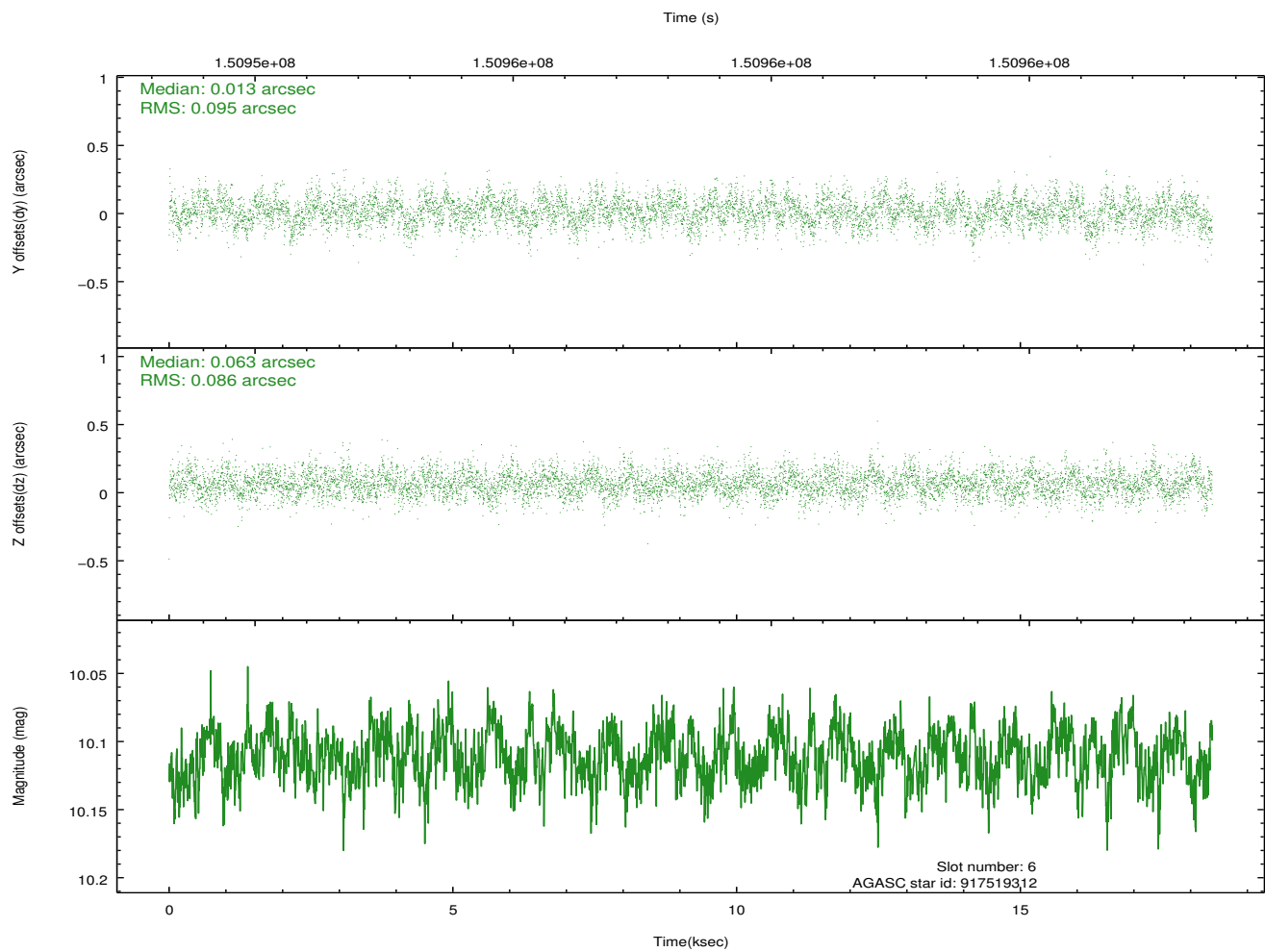
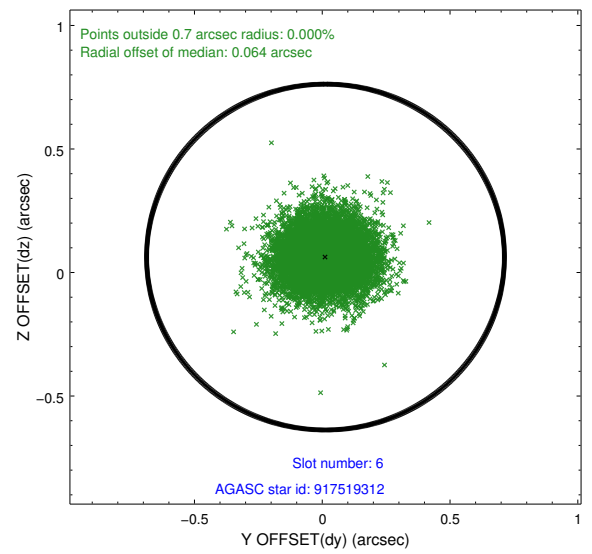
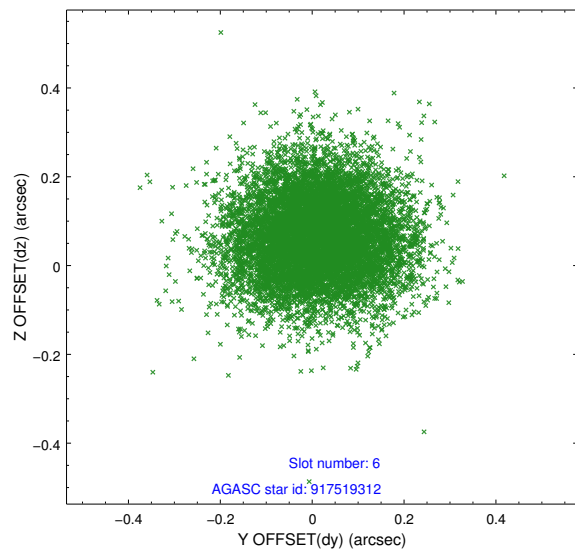
Time (s)



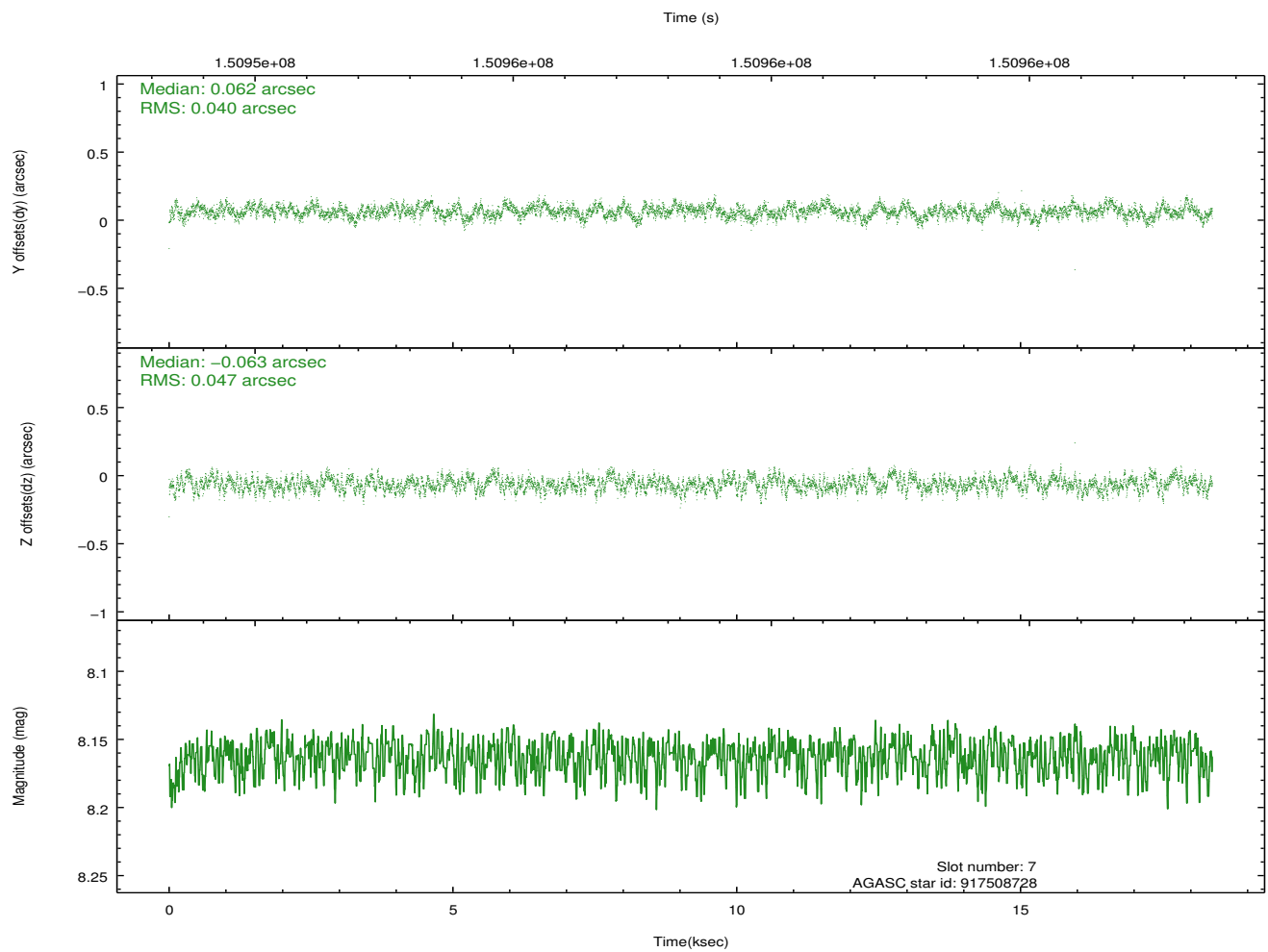
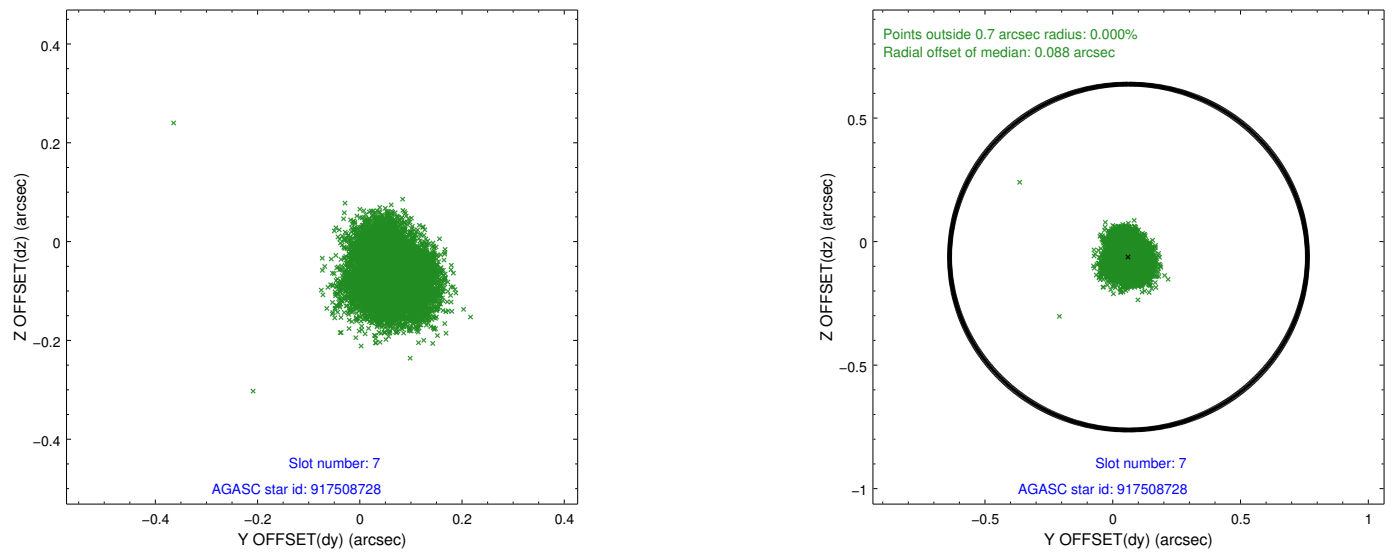
2.4.3 Slot 5



2.4.4 Slot 6

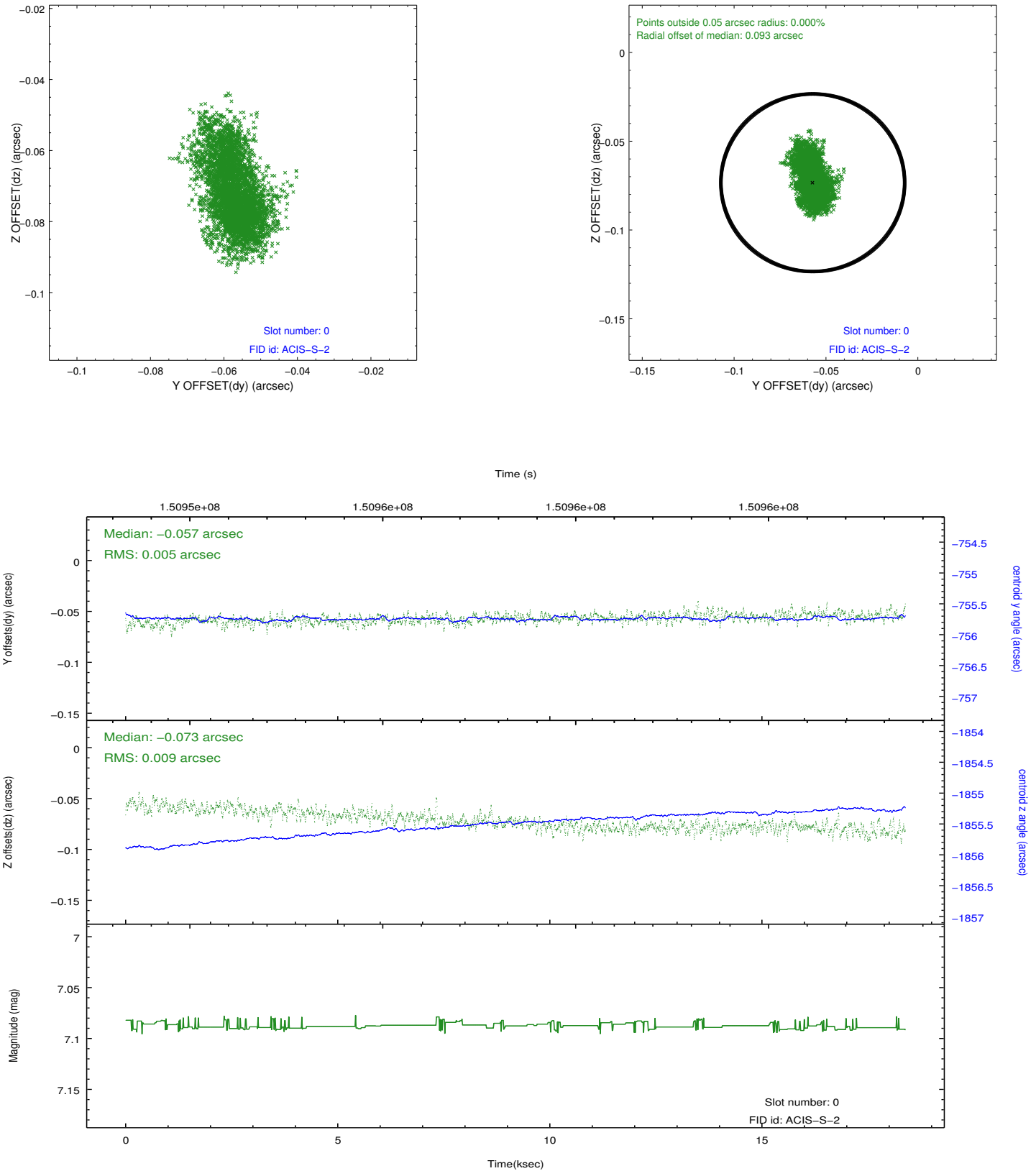


2.4.5 Slot 7

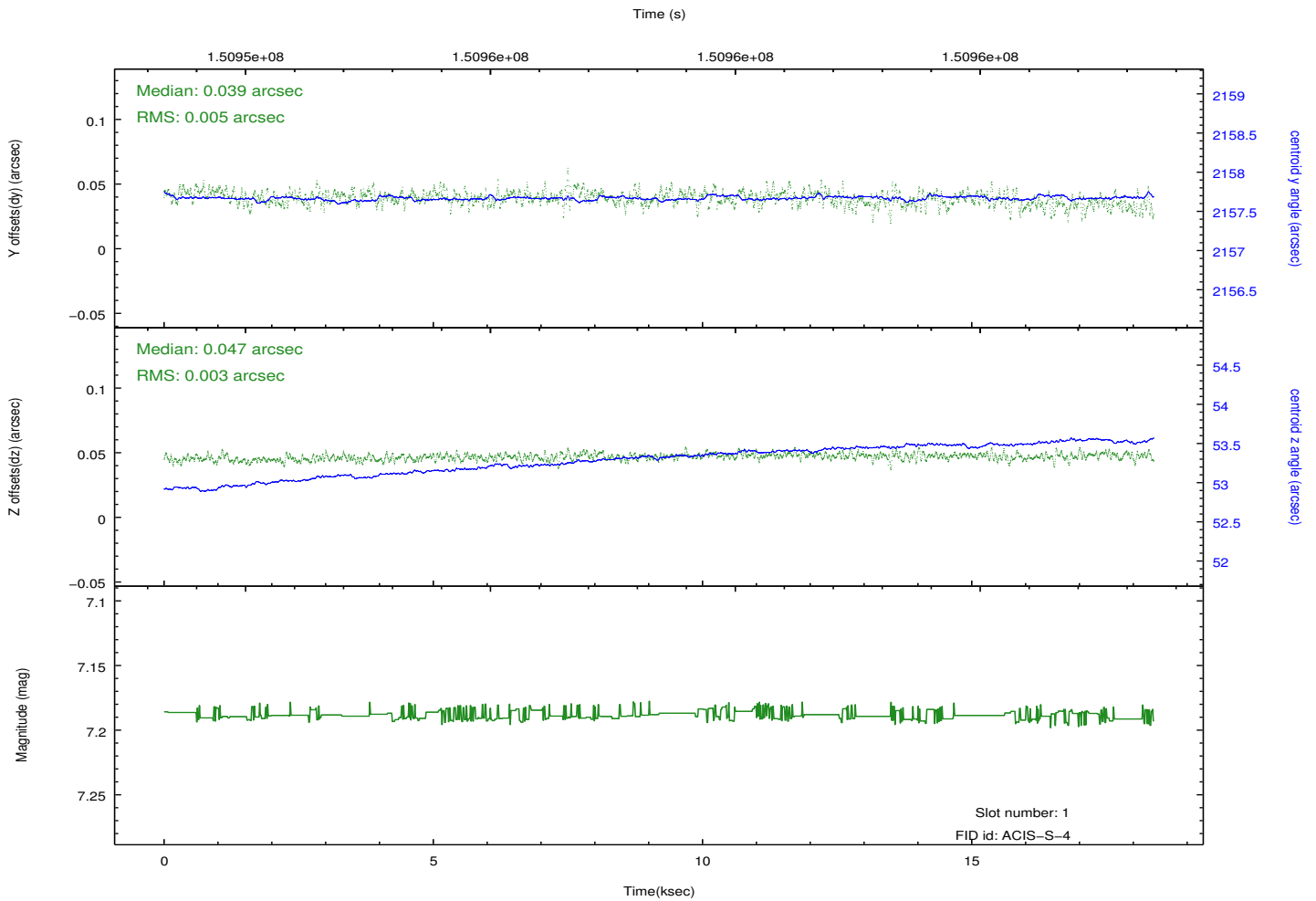
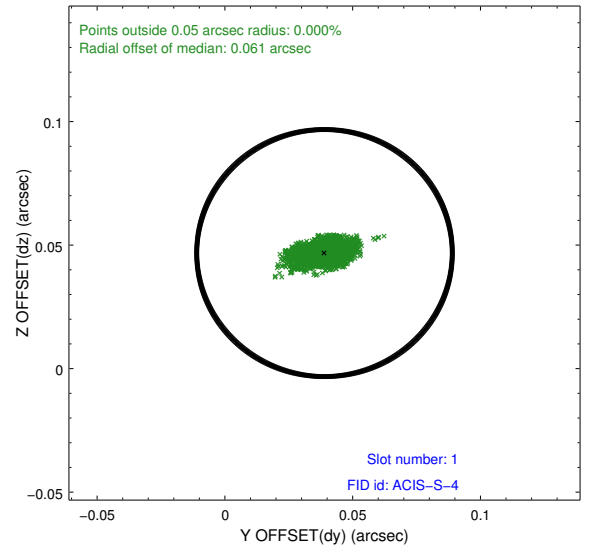
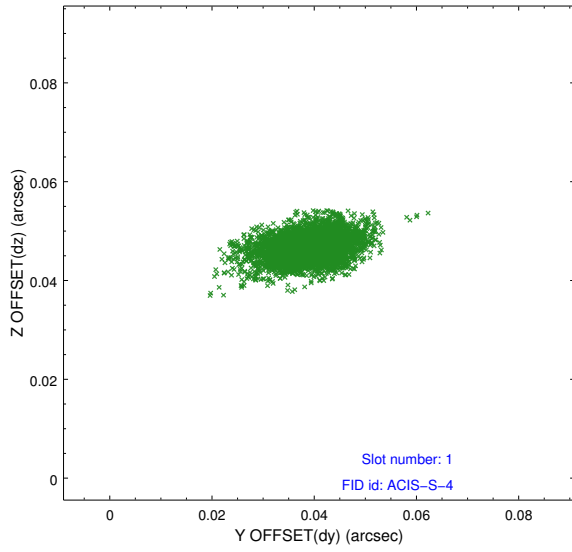


2.5 FID Slots

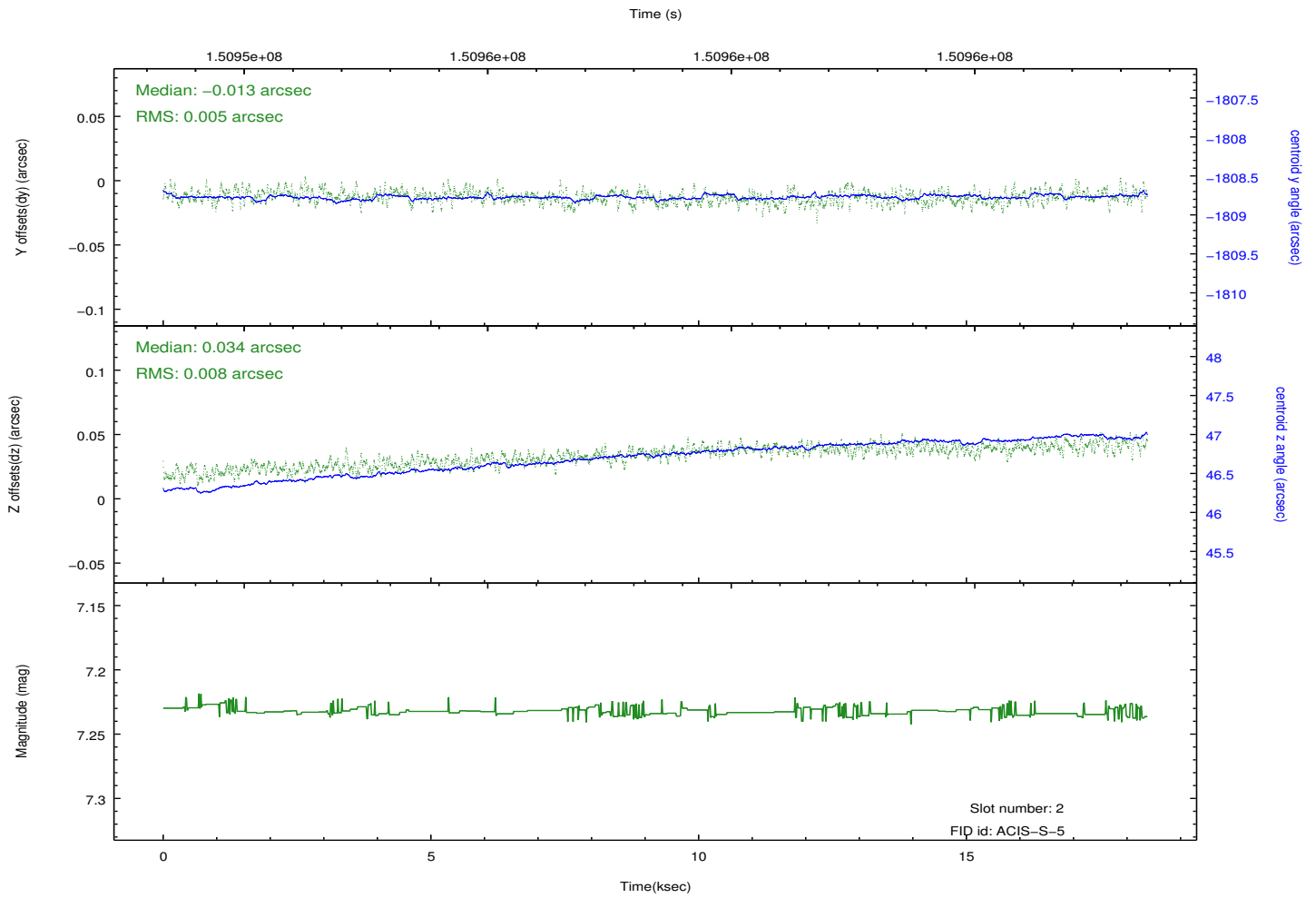
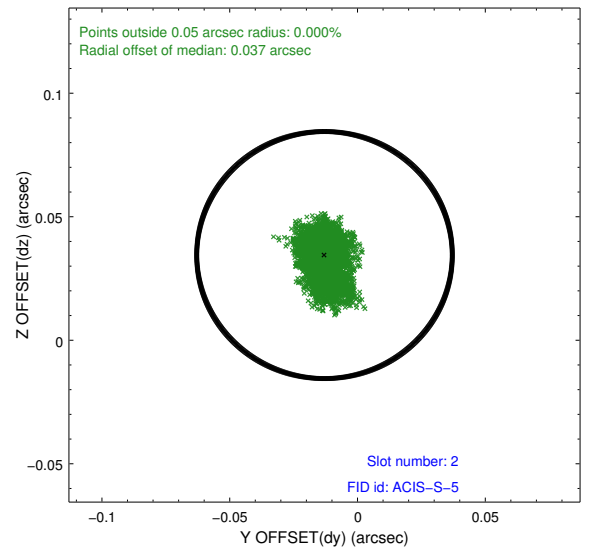
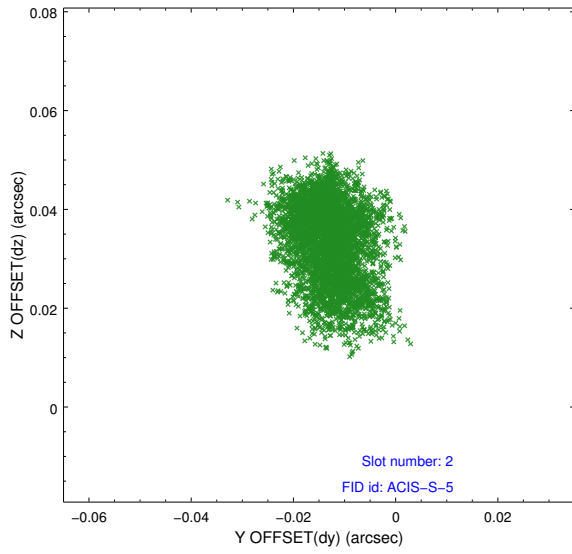
2.5.1 Slot 0



2.5.2 Slot 1



2.5.3 Slot 2



A Summary

A.1 Status

V&V Scientist	Jen Lauer
V&V Date (YYYY-MM-DD)	2012.10.25
V&V Edition	1
V&V Disposition and Status	OK
V&V Charge Time	18.378

A.2 Comments