

# V&V Reference Report

## L2 ASCDS Version : 8.4.5

Observation 3241 - L2 Version 3  
Chandra X-Ray Center

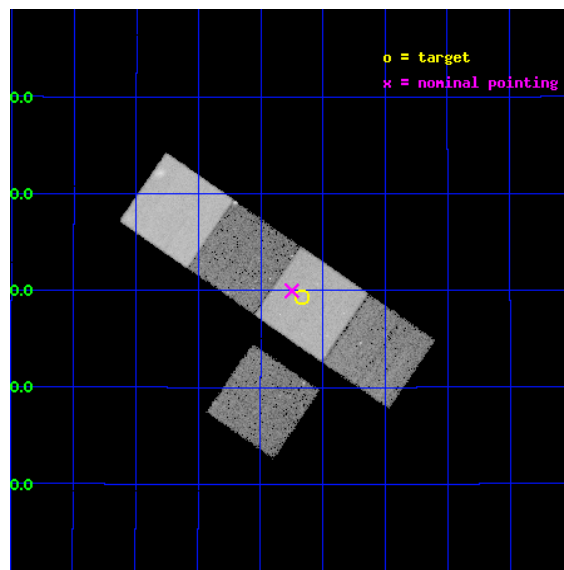
L2 Processing Date : Oct 19 2012

## Contents

<b>1</b>	<b>Front</b>	<b>2</b>
<b>2</b>	<b>OBI</b>	<b>3</b>
2.1	OBI . . . . .	3
2.1.1	Images . . . . .	3
2.1.2	Bias . . . . .	3
2.1.3	Parameters . . . . .	4
2.1.4	Events . . . . .	4
2.2	Compared Parameters . . . . .	5
2.3	Aspect . . . . .	6
2.4	Star Slots . . . . .	9
2.4.1	Slot 3 . . . . .	9
2.4.2	Slot 4 . . . . .	10
2.4.3	Slot 5 . . . . .	11
2.4.4	Slot 6 . . . . .	12
2.4.5	Slot 7 . . . . .	13
2.5	FID Slots . . . . .	14
2.5.1	Slot 0 . . . . .	14
2.5.2	Slot 1 . . . . .	15
2.5.3	Slot 2 . . . . .	16
<b>A</b>	<b>Summary</b>	<b>17</b>
A.1	Status . . . . .	17
A.2	Comments . . . . .	17

# 1 Front

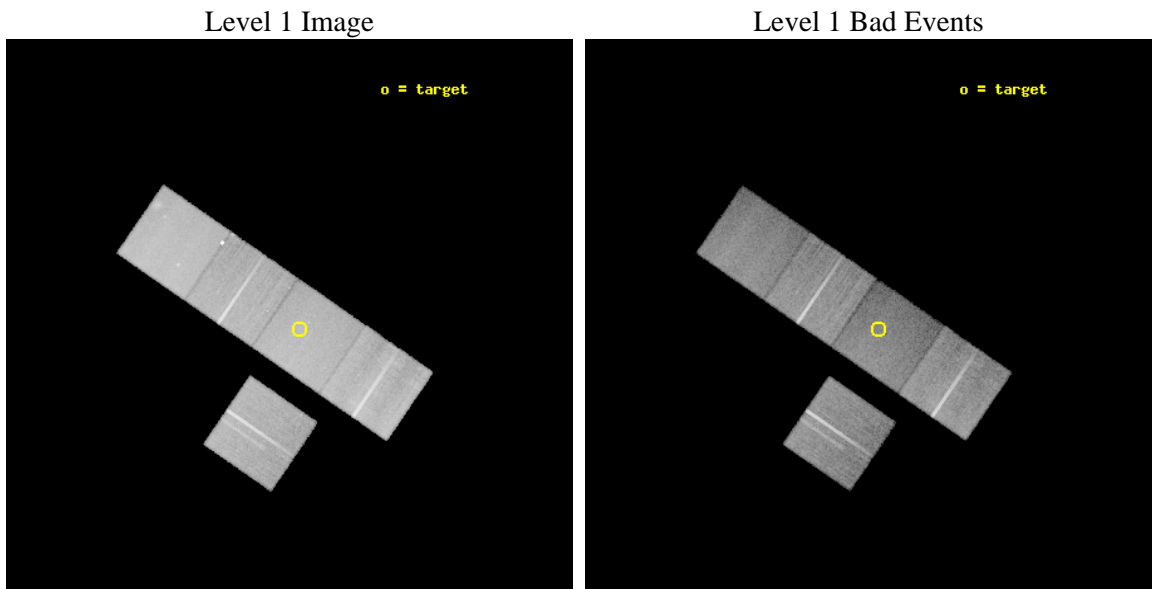
seq_num	800241	Sequence number
obs_id	3241	Observation id
title	RICH, OPTICALLY-SELECTED GALAXY CLUSTERS AT Z~1 FROM THE RCS SURVEY	&#160
observer	Dr. Erica Ellingson	Principal investigator
object	RCS1620+2929	Source name
dtcycle	0	&#160
cycle	P	events from which exps? Prim/Second/Both
ra_targ	245.041667	Observer's specified target RA [deg]
dec_targ	29.489306	Observer's specified target Dec [deg]
ra_nom	245.06235064367	Nominal RA [deg]
dec_nom	29.499601428233	Nominal Dec [deg]
roll_nom	34.496890823176	Nominal Roll [deg]
revision	3	Processing version of data
ontime	37128.699928582	Sum of GTIs [s]
livetime	36643.586130264	Livetime [s]
ontime3	37119.277047932	Sum of GTIs [s]
ontime5	37128.699928582	Sum of GTIs [s]
ontime6	37122.418028086	Sum of GTIs [s]
ontime7	37128.699928582	Sum of GTIs [s]
ontime8	37125.558968365	Sum of GTIs [s]
l2events	271370	Number of level 2 events



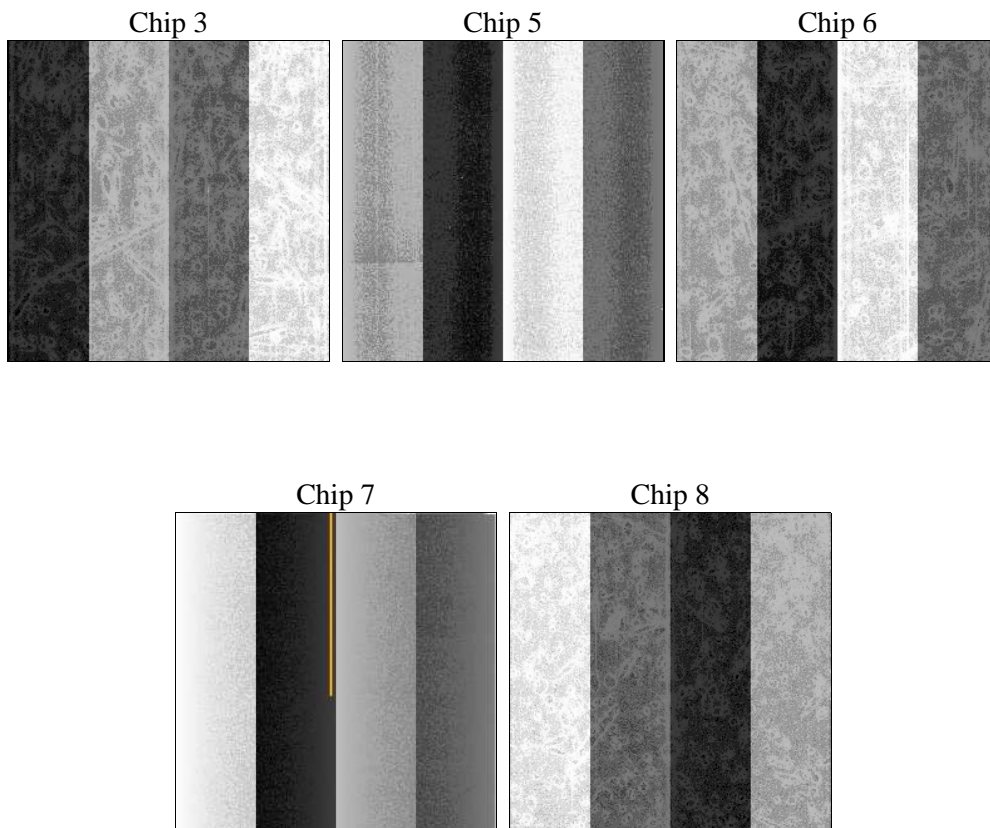
## 2 OBI

### 2.1 OBI

#### 2.1.1 Images



#### 2.1.2 Bias



### 2.1.3 Parameters

obi_num	1	Obi number	sched_exp_time	37000.000000	[s] Scheduled observation exposure time
ascdsver	8.4.5	Processing system revision	ontime	37128.699928582	Sum of GTIs [s]
caldbver	4.5.2	&#160	ontime3	37119.277047932	Sum of GTIs [s]
date	2012-10-19T14:39:14	Date and time of file creation	ontime5	37128.699928582	Sum of GTIs [s]
revision	3	Processing version of data	ontime6	37122.418028086	Sum of GTIs [s]
			ontime7	37128.699928582	Sum of GTIs [s]
			ontime8	37125.558968365	Sum of GTIs [s]
			l1events	1100214	Number of level 1 events

### 2.1.4 Events

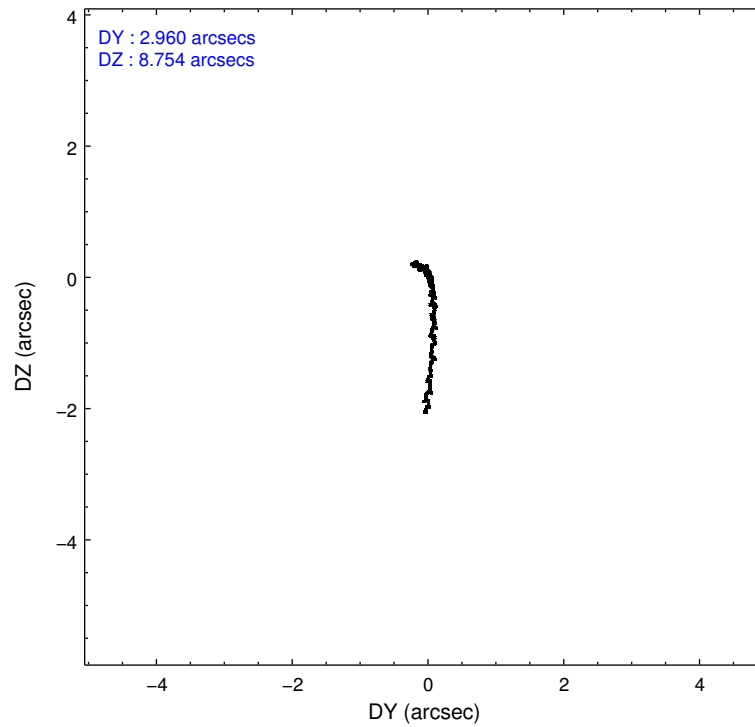
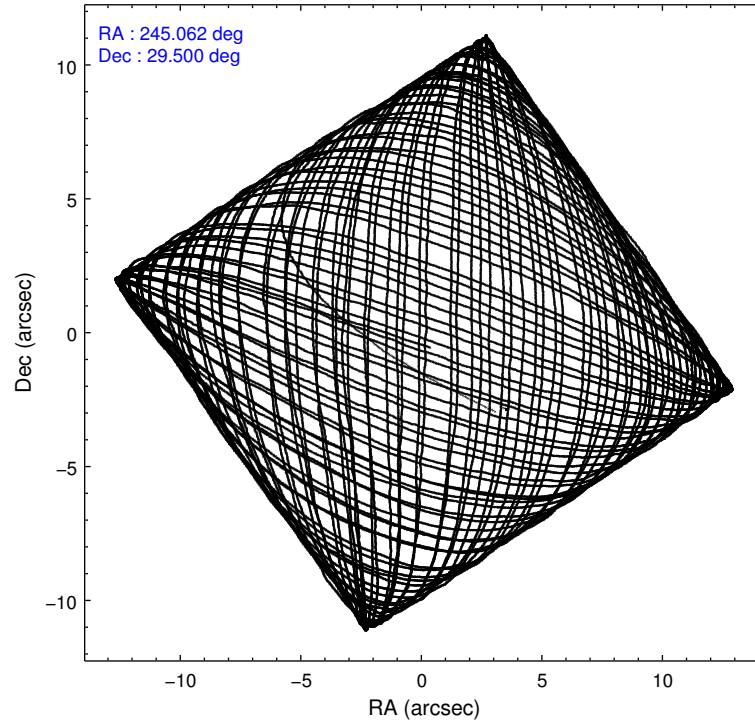
	ccd 3	ccd 5	ccd 6	ccd 7	ccd 8
level 1 events	189330	258309	198816	212961	240798
rejected events	171754	129089	178326	115650	188260
rejected %	90%	49%	89%	54%	78%

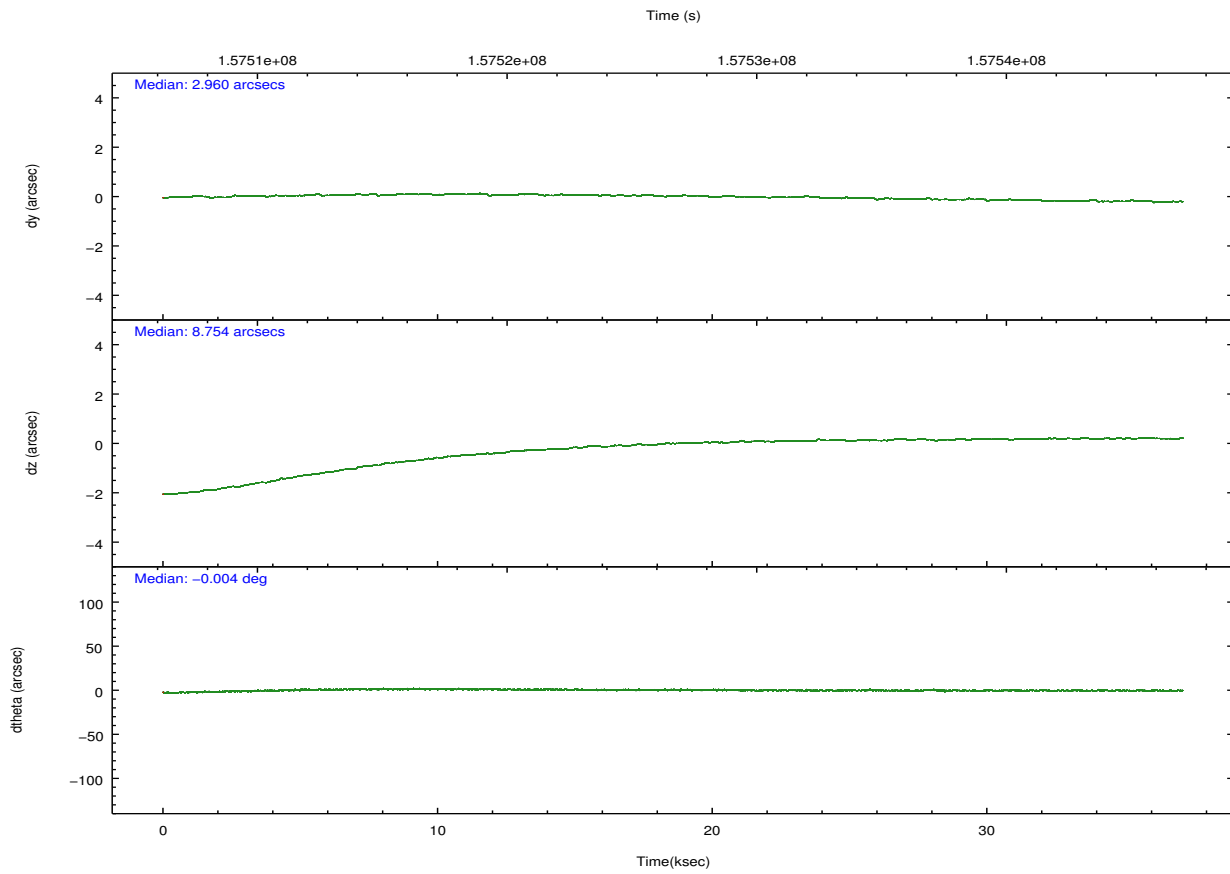
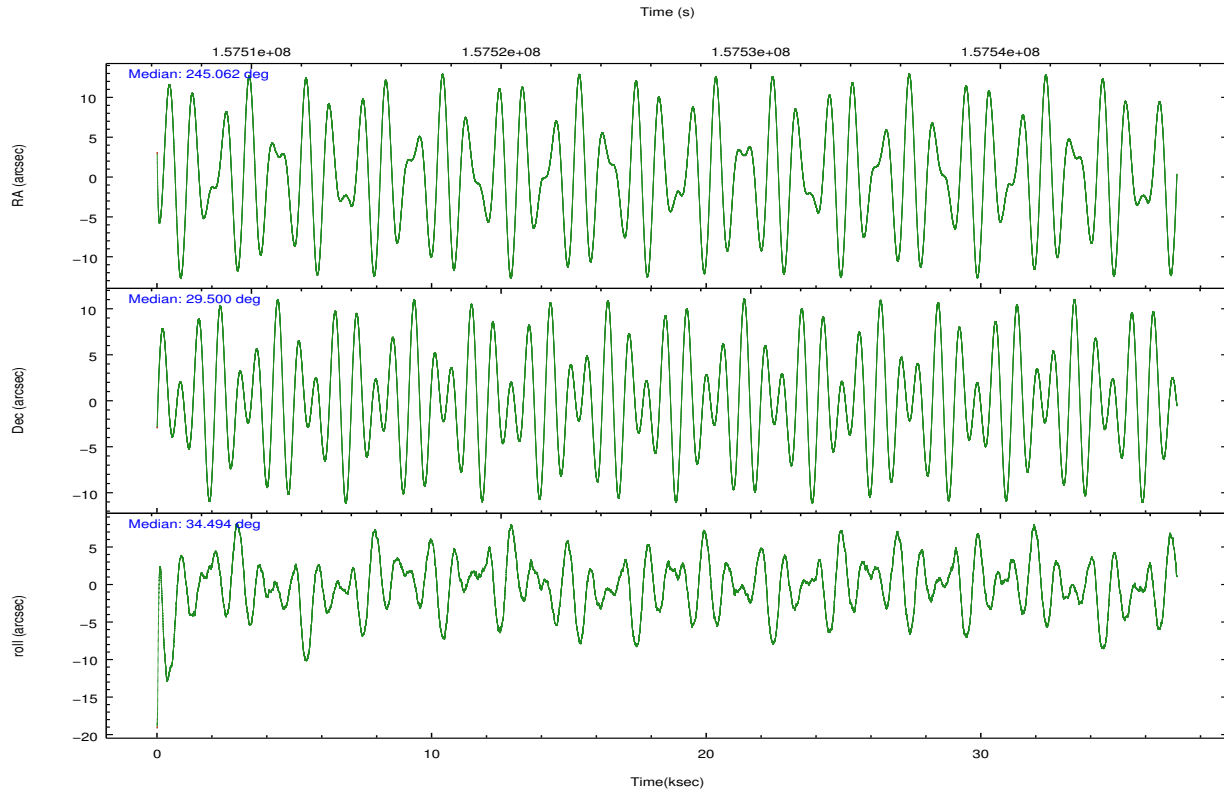
	ccd 3	ccd 5	ccd 6	ccd 7	ccd 8
grade 0 events	6094	13983	7491	9515	16265
	3%	5%	3%	4%	6%
grade 1 events	98	193	70	180	151
	0%	0%	0%	0%	0%
grade 2 events	3698	36654	4153	19635	11370
	1%	14%	2%	9%	4%
grade 3 events	2178	6629	2318	9293	5928
	1%	2%	1%	4%	2%
grade 4 events	2159	6350	2234	9133	5462
	1%	2%	1%	4%	2%
grade 5 events	7305	21408	7503	22591	10548
	3%	8%	3%	10%	4%
grade 6 events	3497	65964	4350	49937	13678
	1%	25%	2%	23%	5%
grade 7 events	164301	107128	170697	92677	177396
	86%	41%	85%	43%	73%

## 2.2 Compared Parameters

Parameter	Planned	Actual	Parameter	Planned	Actual
Instrument	ACIS	ACIS	Obspar format version number	7	7
Detector	ACIS-35678	ACIS-35678	Obspar file type	PREDICTED	ACTUAL
Grating	NONE	NONE	Obspar update status	NONE	UPDATED
Data mode	VFAINT	VFAINT	Number of optional ACIS chips dropped	0	0
Observation mode	POINTING	POINTING	On-chip summing requested	N	N
[deg] Pointing RA	245.049294	245.0623506436704	Subarray requested	NONE	NONE
[deg] Pointing Dec	29.474867	29.49960142823316	Alternating exposures requested	N	N
[deg] Pointing Roll	34.346694	34.49689082317593	[s] Primary exposure time	0.000000	3.1
[mm] SIM focus pos	-0.684267	-0.6828225247311905			
[mm] SIM defocus	0	0.001444936568705701			
[mm] SIM translation stage pos	-190.132523	-190.1425803651734			
[mm] SIM translation stage offset	0	0.01005778216563158			
[s] Observation start time (MET)	157508223.184000	157507206.33145			
Observation start date	2002-12-29T00:15:59	2002-12-29T00:00:06			
[s] Observation end time (MET)	157545223.184000	157545597.70806			
Observation end date	2002-12-29T10:32:39	2002-12-29T10:39:57			
Read mode	TIMED	TIMED			

## 2.3 Aspect



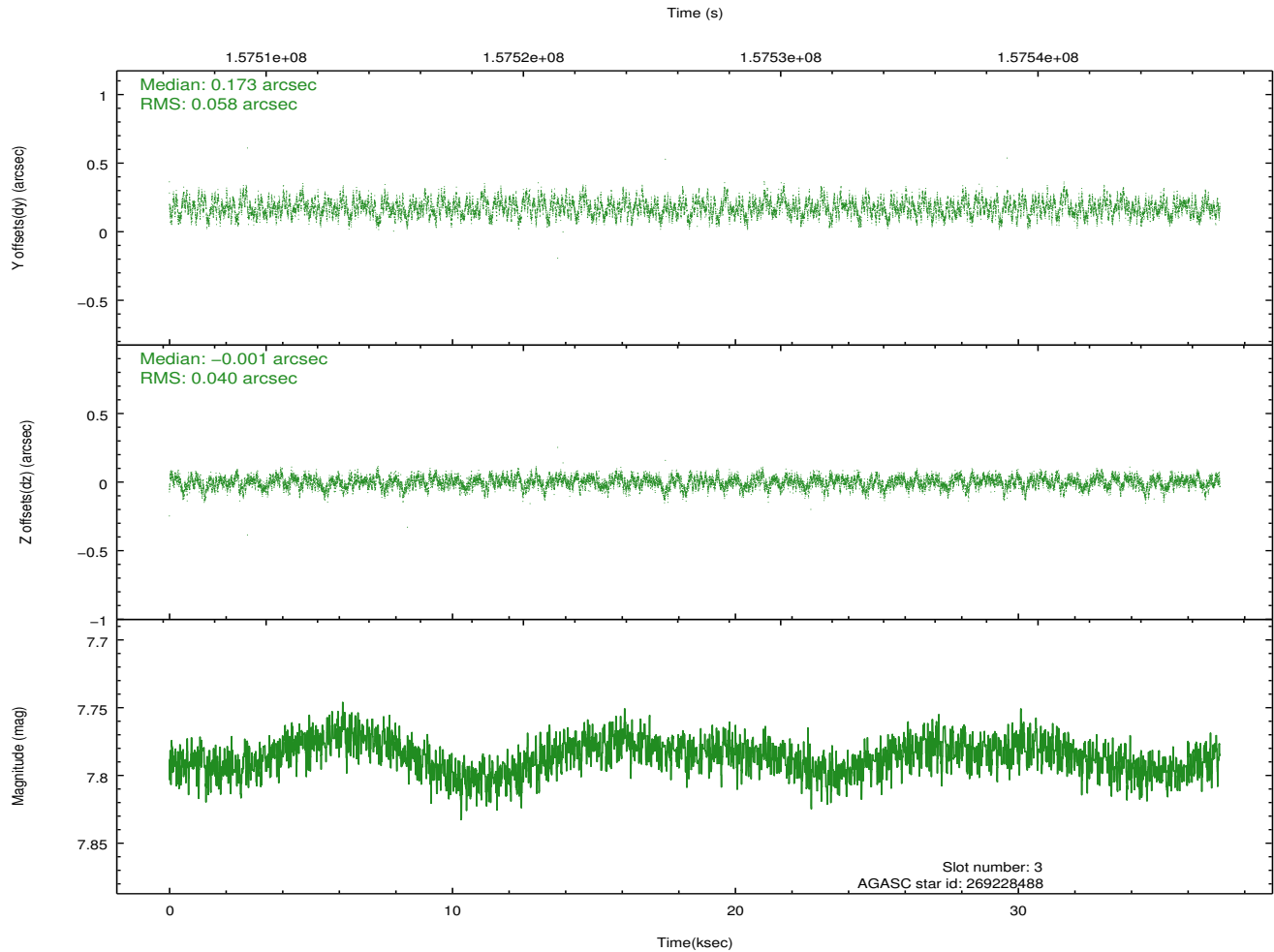
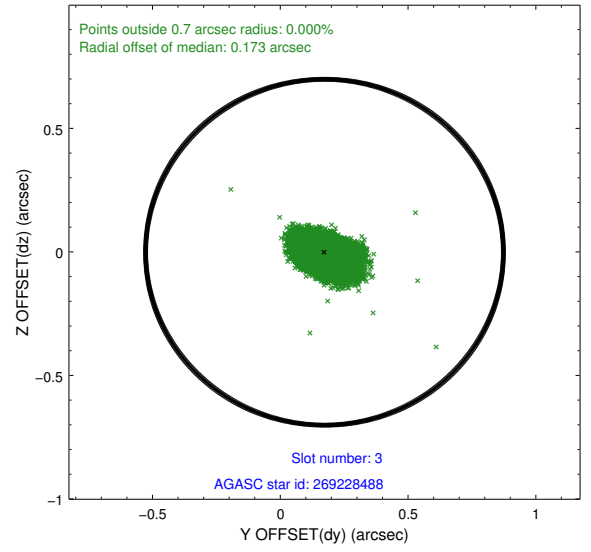
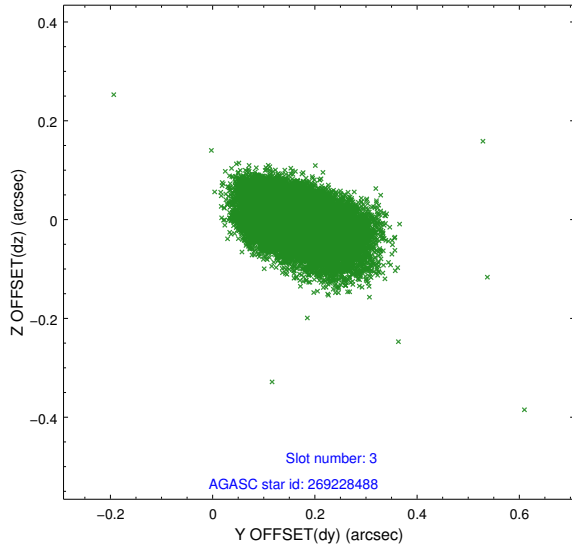


### Slot Statistics

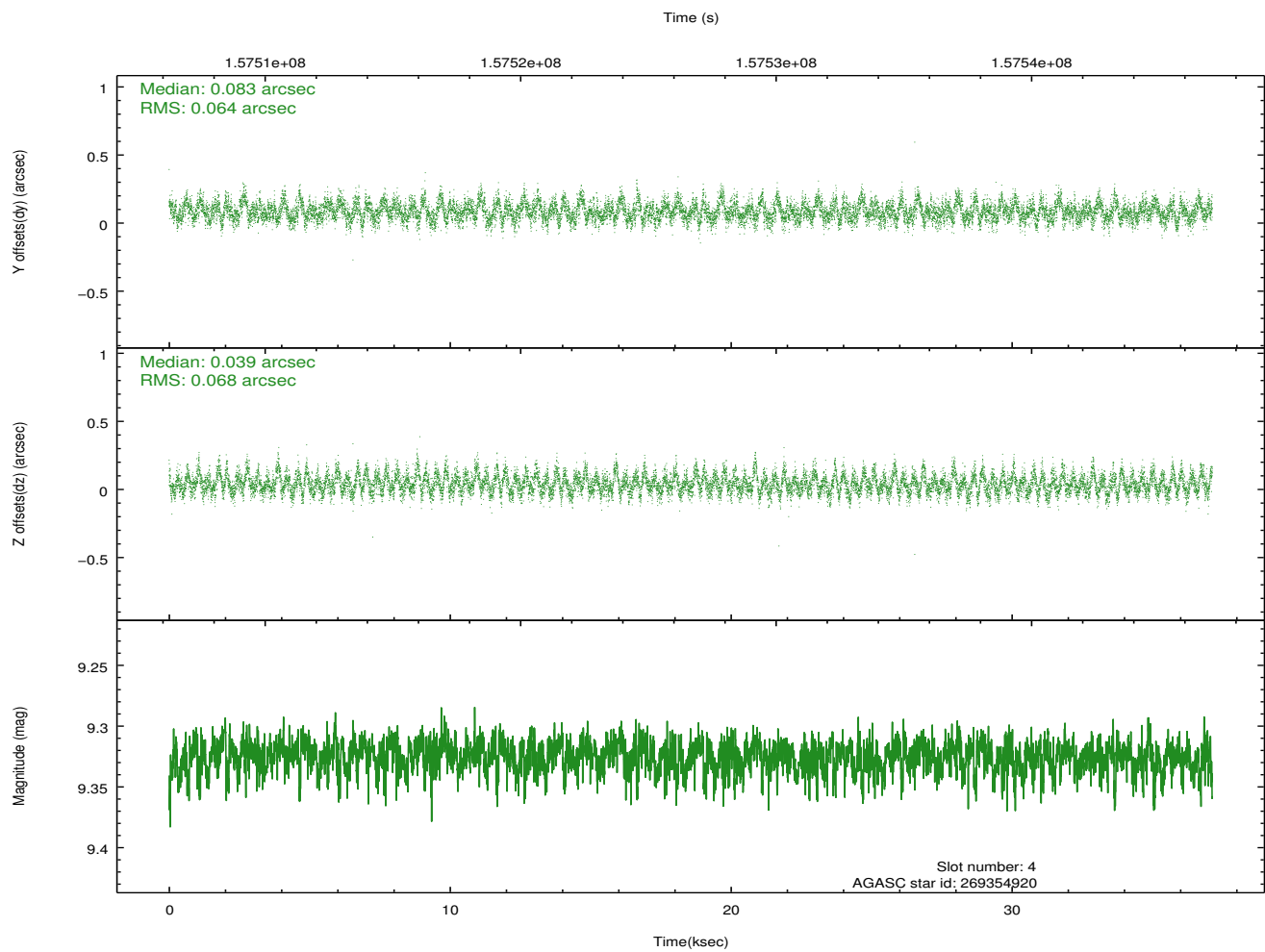
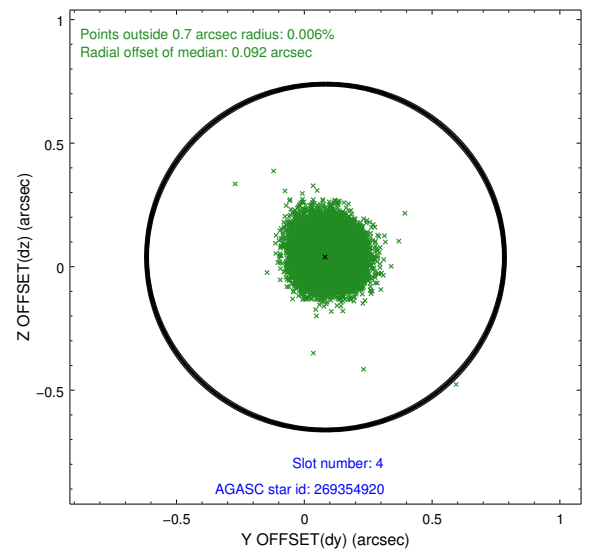
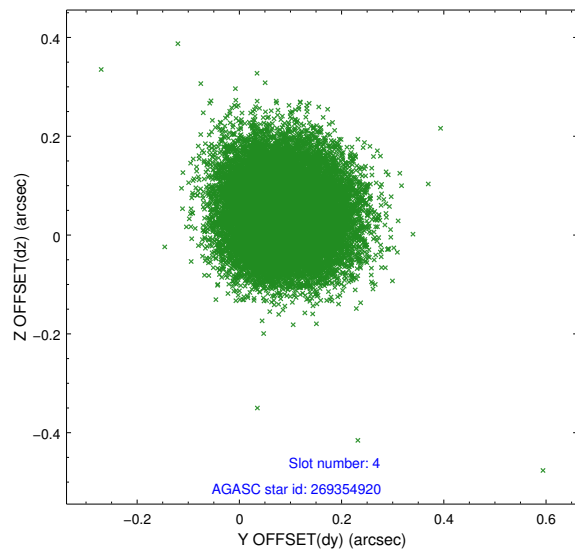
slot	status	id	mag	n_pts	med_dy	med_dz	dr1	dr2	ra	dec	mean_y	mean_z
0	FID	ACIS-S-2	7.11	9058	-0.021	-0.011	0.010	0.016	0.000000	0.000000	-755.60	-1729.57
1	FID	ACIS-S-4	7.20	9058	0.001	0.013	0.007	0.012	0.000000	0.000000	2157.69	178.91
2	FID	ACIS-S-5	7.24	9057	-0.012	0.007	0.010	0.017	0.000000	0.000000	-1808.39	172.60
3	GUIDE	269228488	7.79	18114	0.173	-0.001	0.075	0.126	244.288777	29.428336	-2058.56	1213.65
4	GUIDE	269354920	9.33	18108	0.083	0.039	0.100	0.158	245.289727	29.523415	721.12	-279.66
5	GUIDE	269362800	9.33	18007	-0.023	0.123	0.097	0.159	245.293073	28.931223	-469.31	-2048.39
6	GUIDE	269224224	9.87	18098	-0.070	-0.220	0.126	0.205	244.733068	29.916975	84.12	1871.70
7	GUIDE	269361128	8.90	18108	-0.165	0.062	0.085	0.138	245.711822	29.831818	2436.78	-101.08

## 2.4 Star Slots

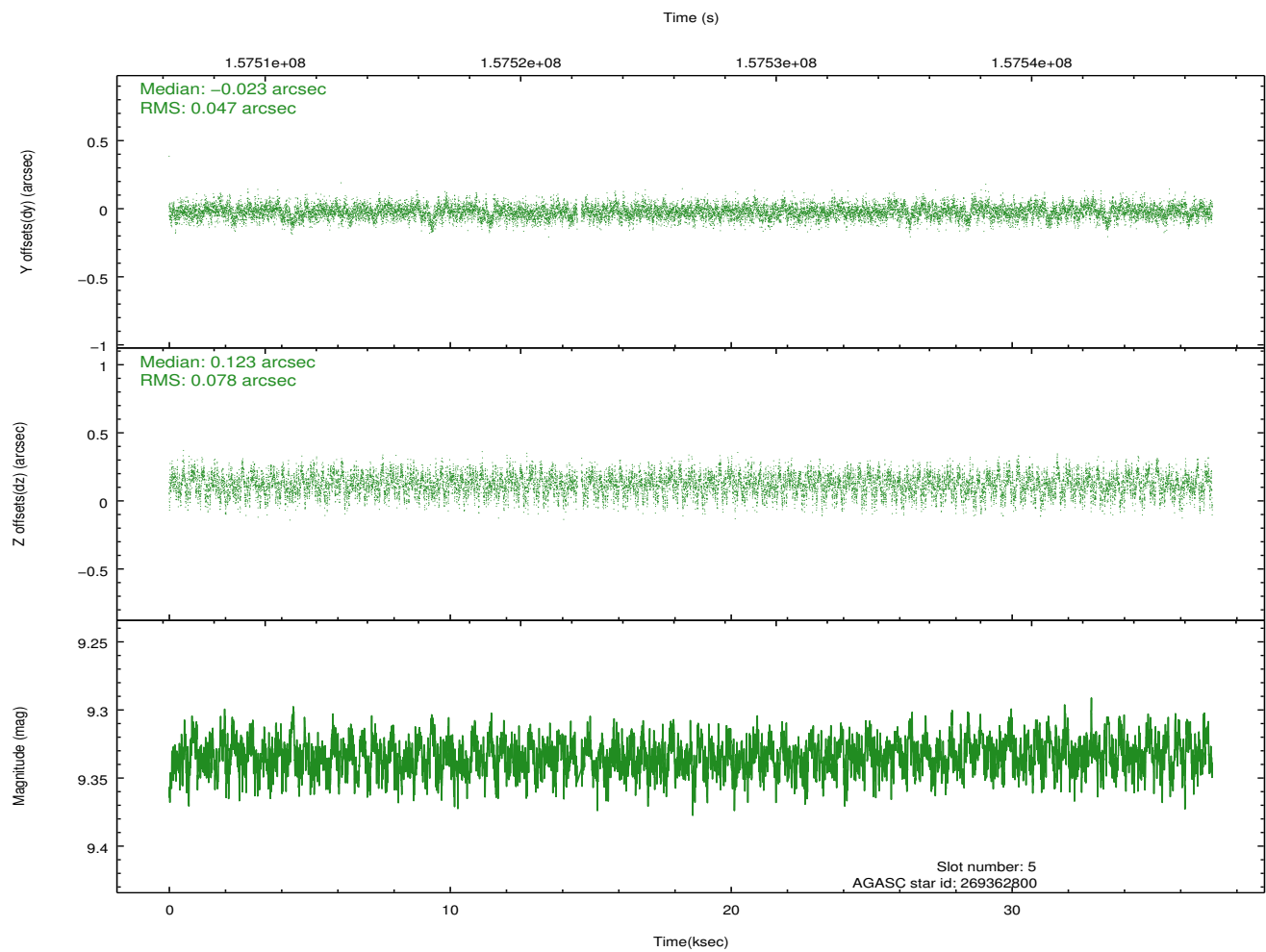
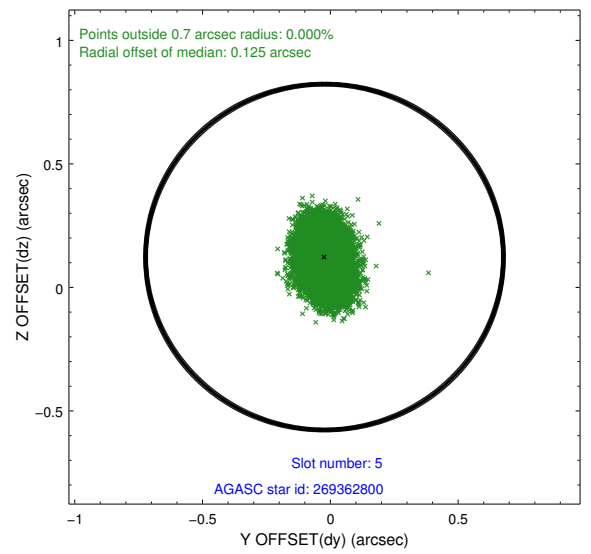
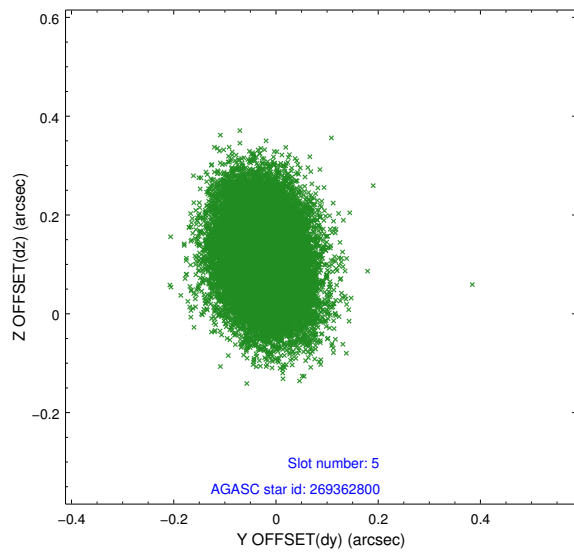
### 2.4.1 Slot 3



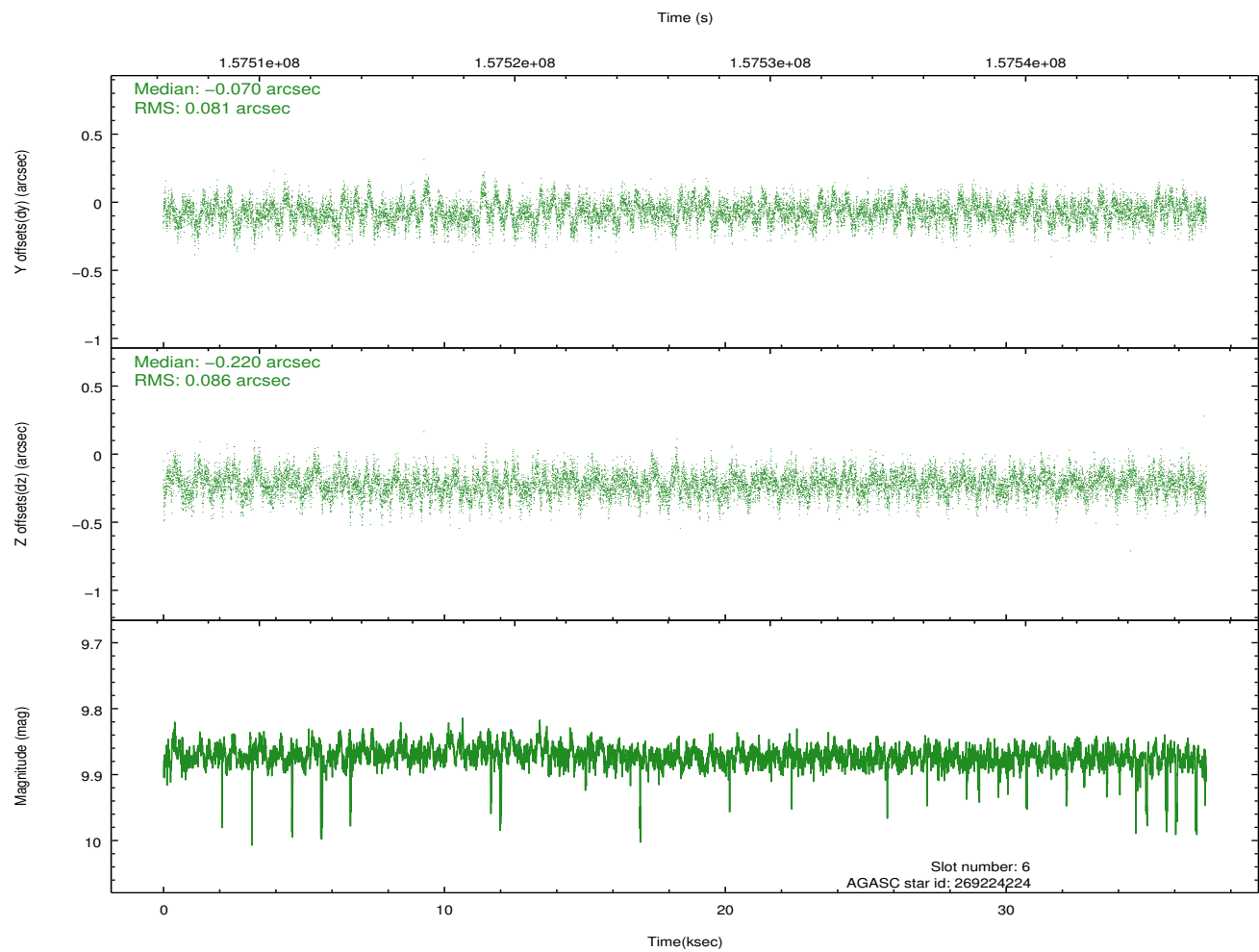
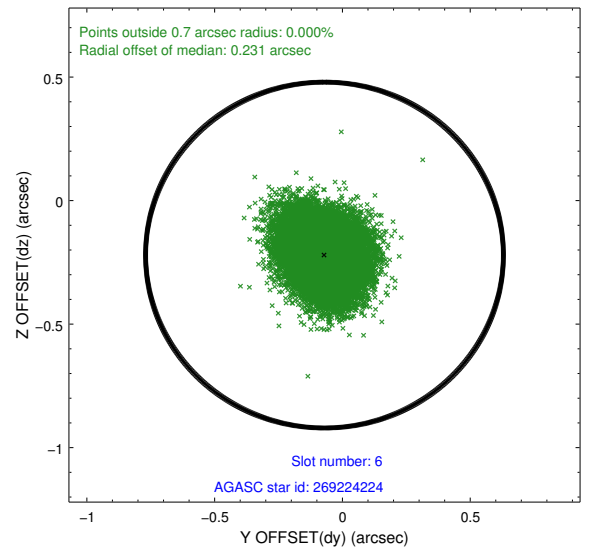
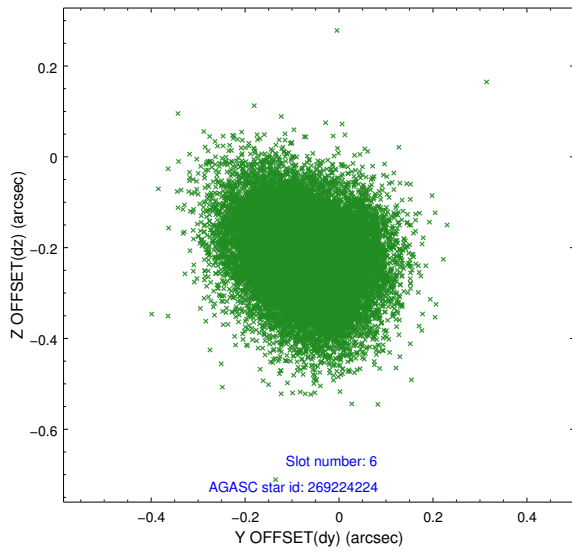
## 2.4.2 Slot 4



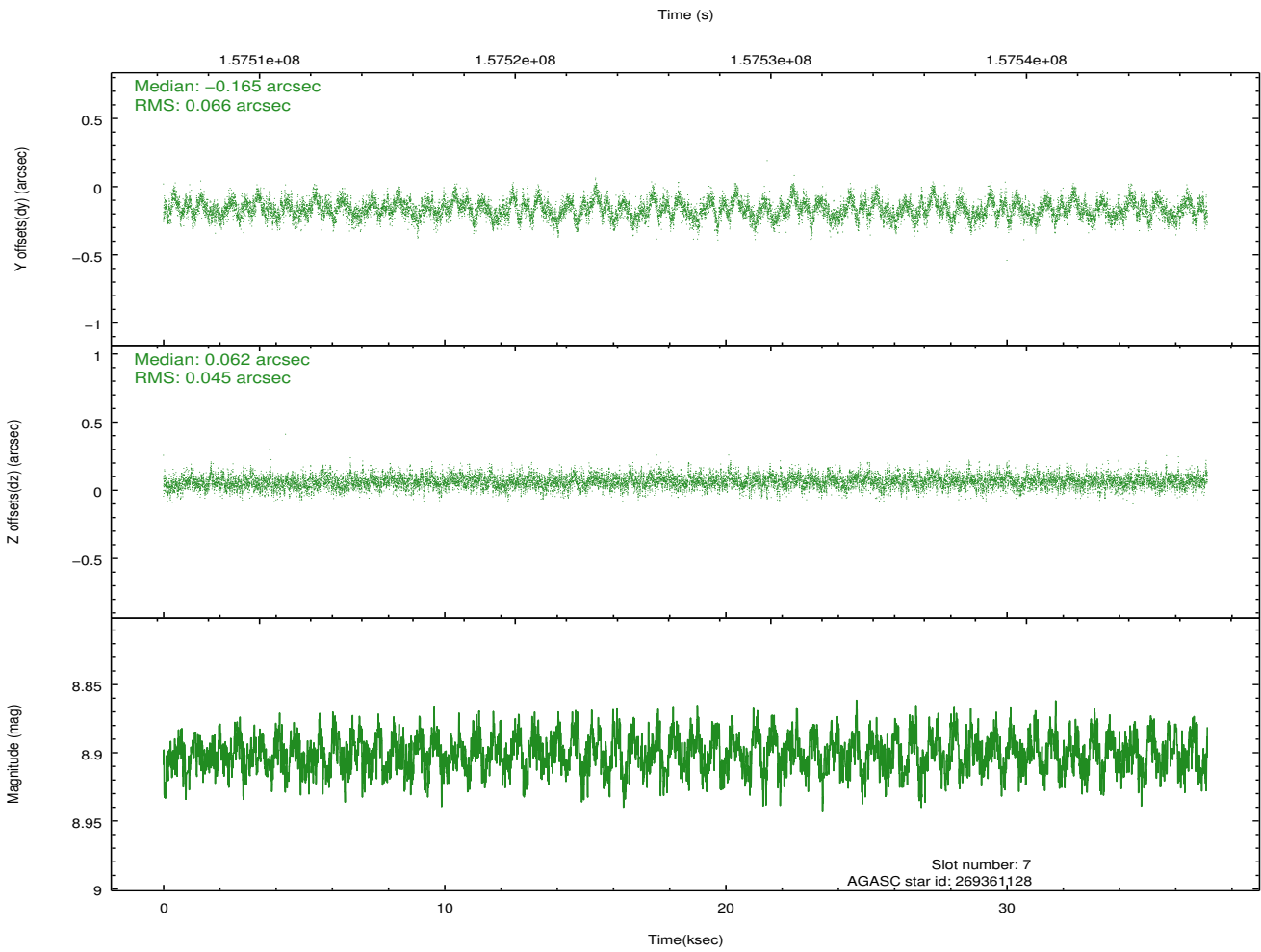
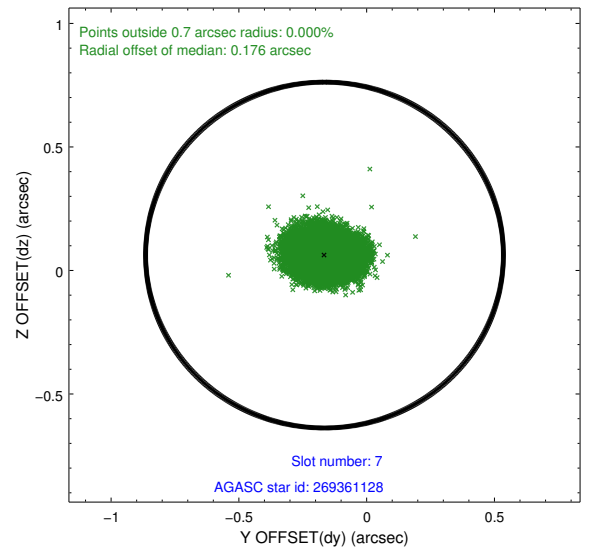
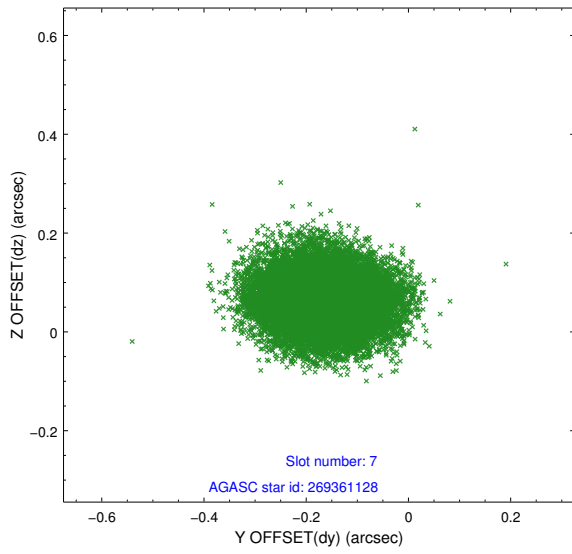
### 2.4.3 Slot 5



## 2.4.4 Slot 6

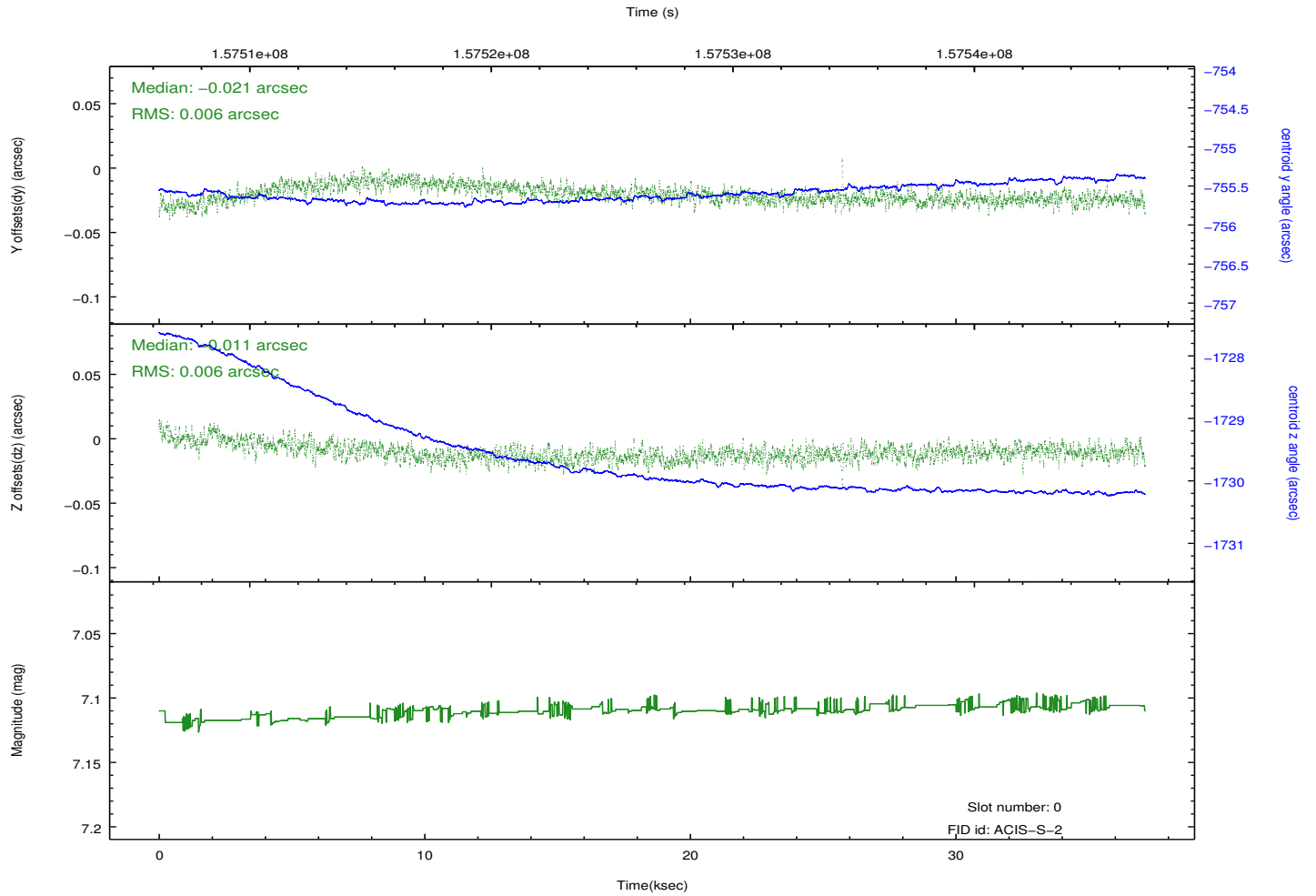
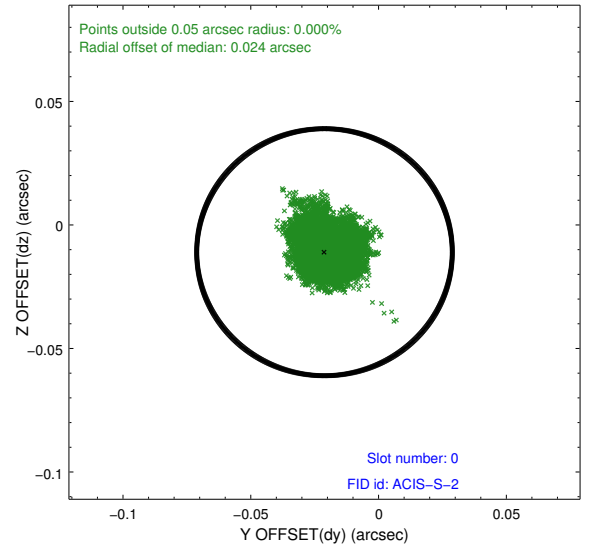
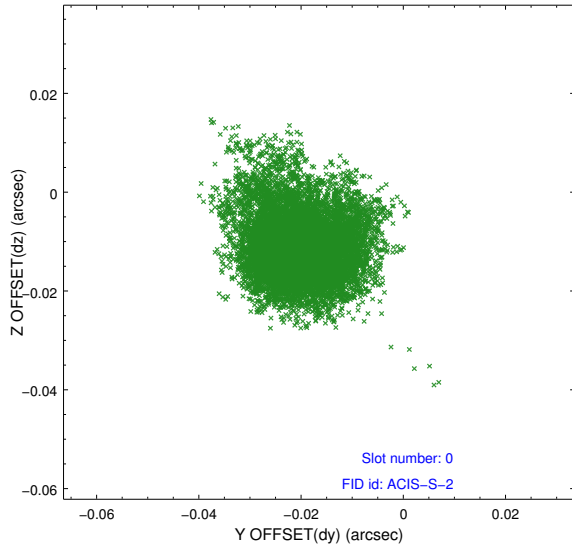


## 2.4.5 Slot 7

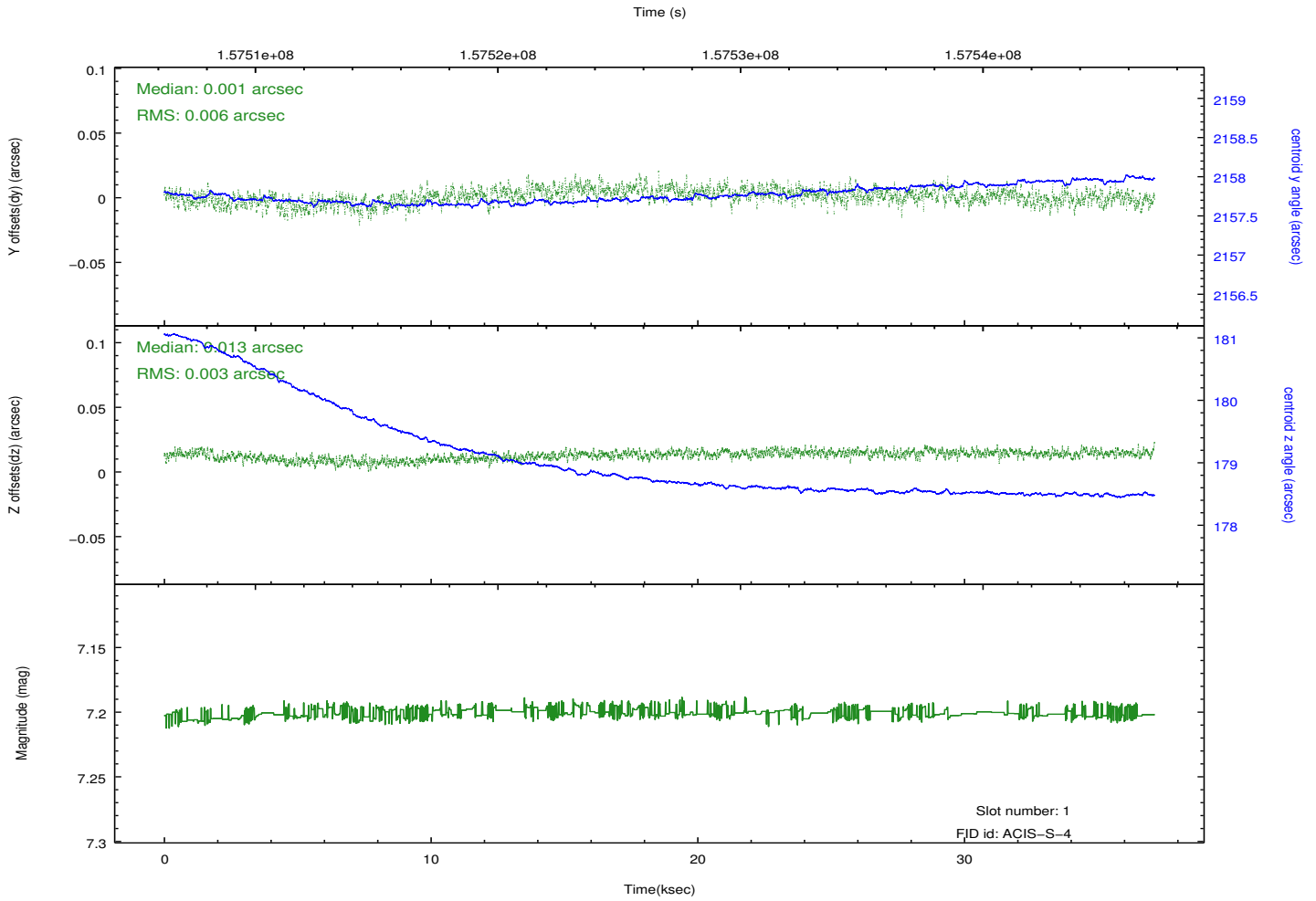
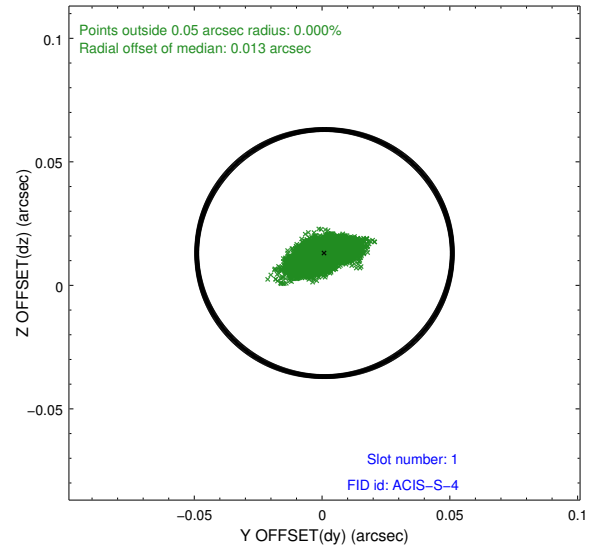
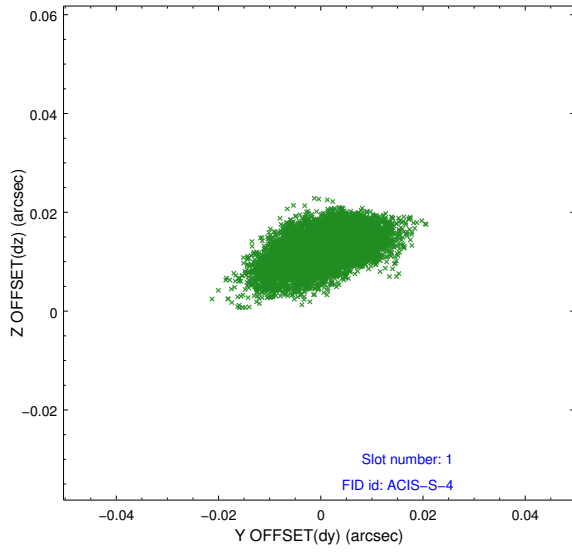


## 2.5 FID Slots

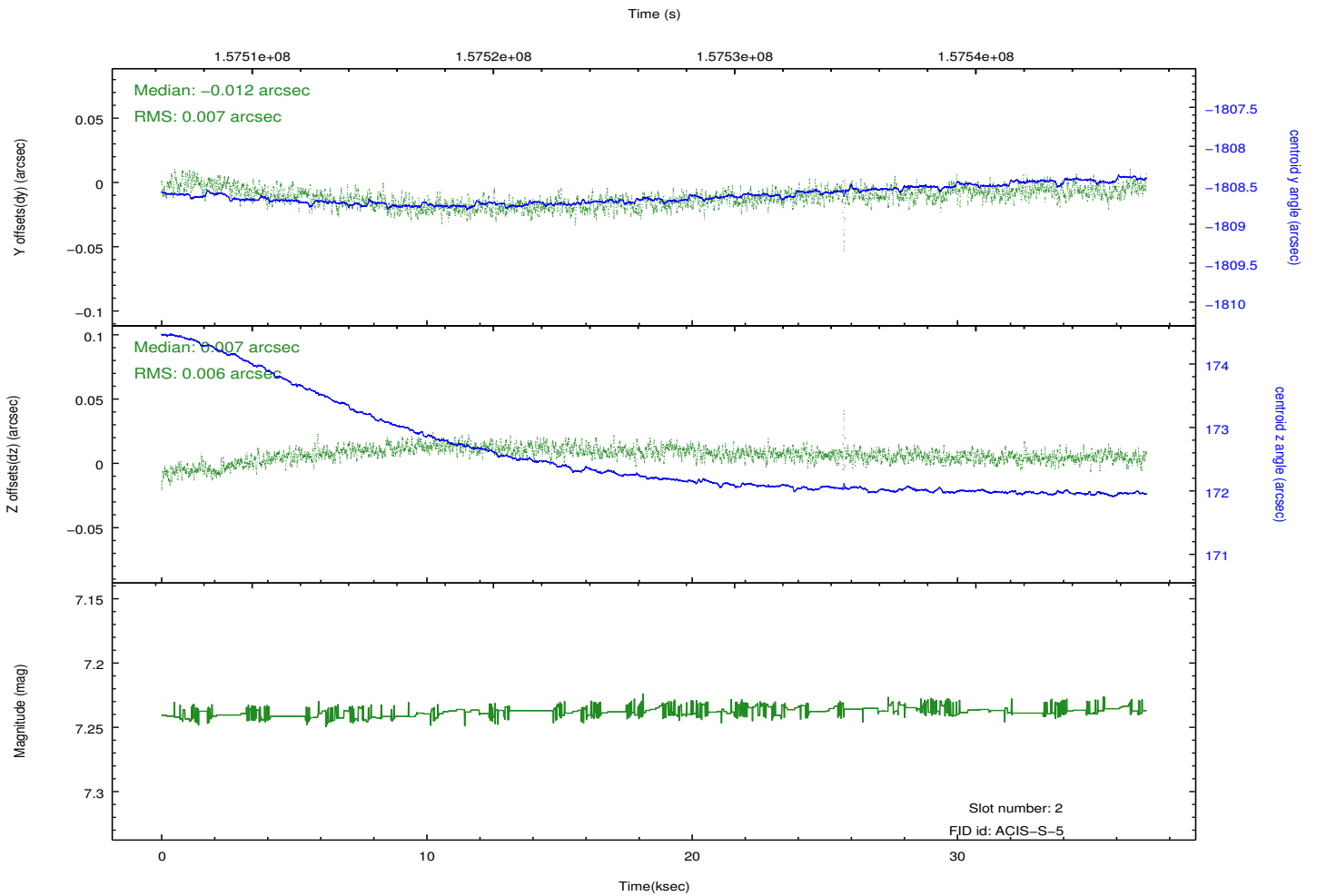
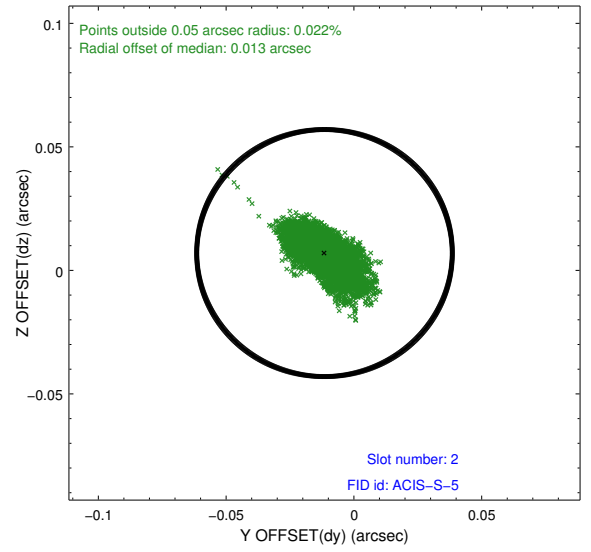
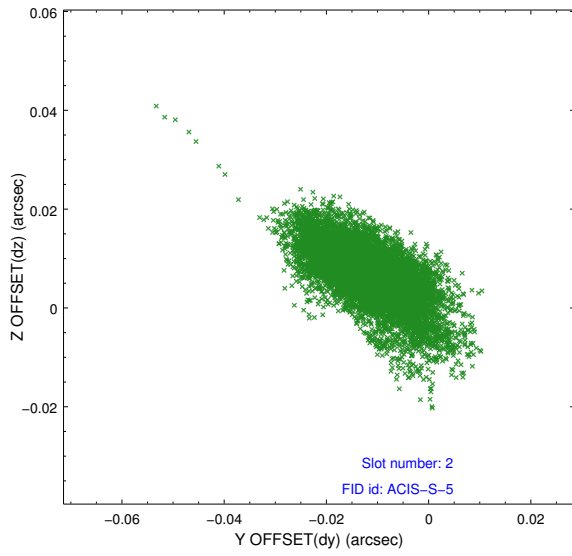
### 2.5.1 Slot 0



## 2.5.2 Slot 1



### 2.5.3 Slot 2



## A Summary

### A.1 Status

V&V Scientist	Jen Lauer
V&V Date (YYYY-MM-DD)	2012.10.31
V&V Edition	1
V&V Disposition and Status	OK
V&V Charge Time	37.128

### A.2 Comments