

V&V Reference Report

L2 ASCDS Version : 8.4.5

Observation 3261 - L2 Version 3
Chandra X-Ray Center

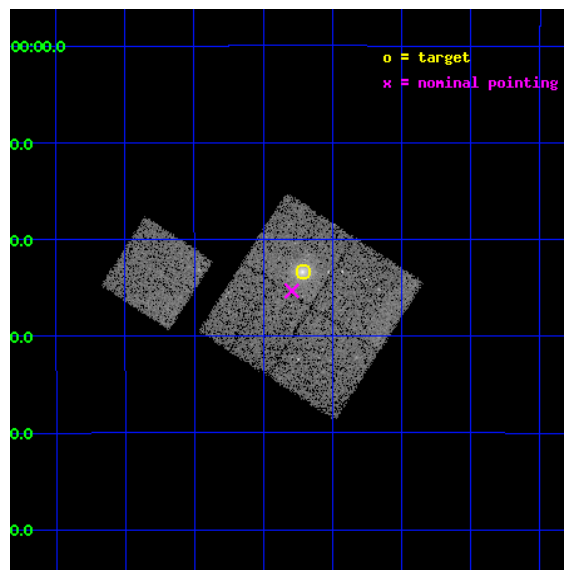
L2 Processing Date : Oct 17 2012

Contents

1	Front	2
2	OBI	3
2.1	OBI	3
2.1.1	Images	3
2.1.2	Bias	3
2.1.3	Parameters	4
2.1.4	Events	4
2.2	Compared Parameters	5
2.3	Aspect	6
2.4	Star Slots	9
2.4.1	Slot 3	9
2.4.2	Slot 4	10
2.4.3	Slot 5	11
2.4.4	Slot 6	12
2.4.5	Slot 7	13
2.5	FID Slots	14
2.5.1	Slot 0	14
2.5.2	Slot 1	15
2.5.3	Slot 2	16
A	Summary	17
A.1	Status	17
A.2	Comments	17

1 Front

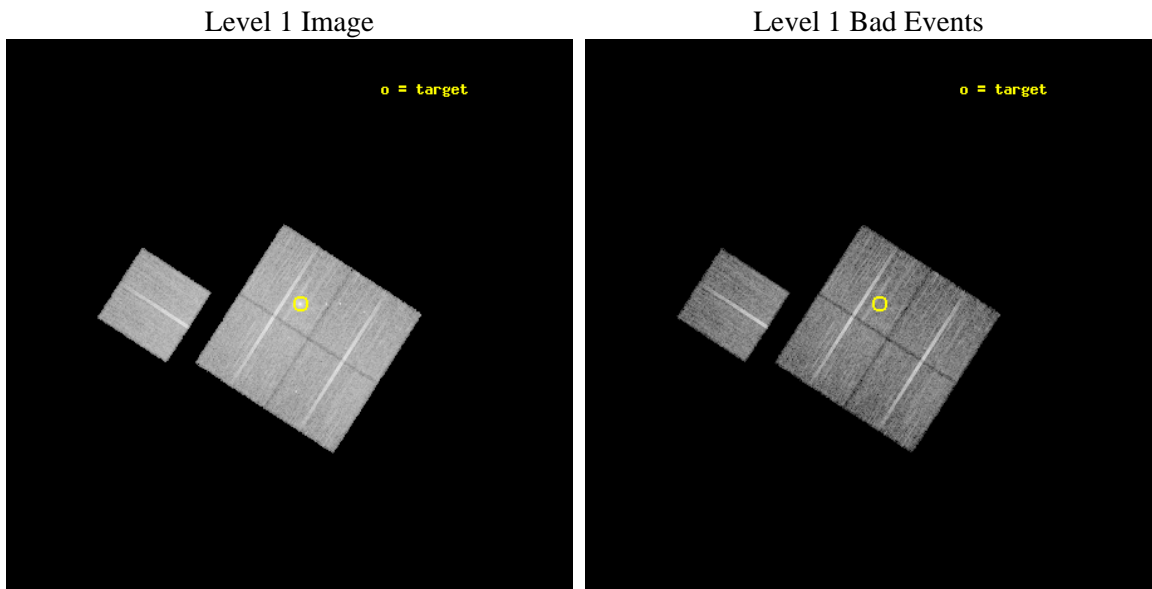
seq_num	800261	Sequence number
obs_id	3261	Observation id
title	MACS: THE X-RAY PROPERTIES OF THE MOST MASSIVE GALAXY CLUSTERS AT Z>0.3	Proposal title
observer	Dr. Harald Ebeling	Principal investigator
object	MACSJ0011.7-1523	Source name
dtcycle	0	
cycle	P	events from which exps? Prim/Second/Both
ra_targ	2.92875	Observer's specified target RA [deg]
dec_targ	-15.389444	Observer's specified target Dec [deg]
ra_nom	2.9482287251022	Nominal RA [deg]
dec_nom	-15.422116432083	Nominal Dec [deg]
roll_nom	302.81743659551	Nominal Roll [deg]
revision	3	Processing version of data
ontime	21885.999957889	Sum of GTIs [s]
livetime	21600.043256201	Livetime [s]
ontime0	21879.718117088	Sum of GTIs [s]
ontime1	21882.858987659	Sum of GTIs [s]
ontime2	21882.859087318	Sum of GTIs [s]
ontime3	21885.999957889	Sum of GTIs [s]
ontime6	21885.999957889	Sum of GTIs [s]
l2events	51985	Number of level 2 events



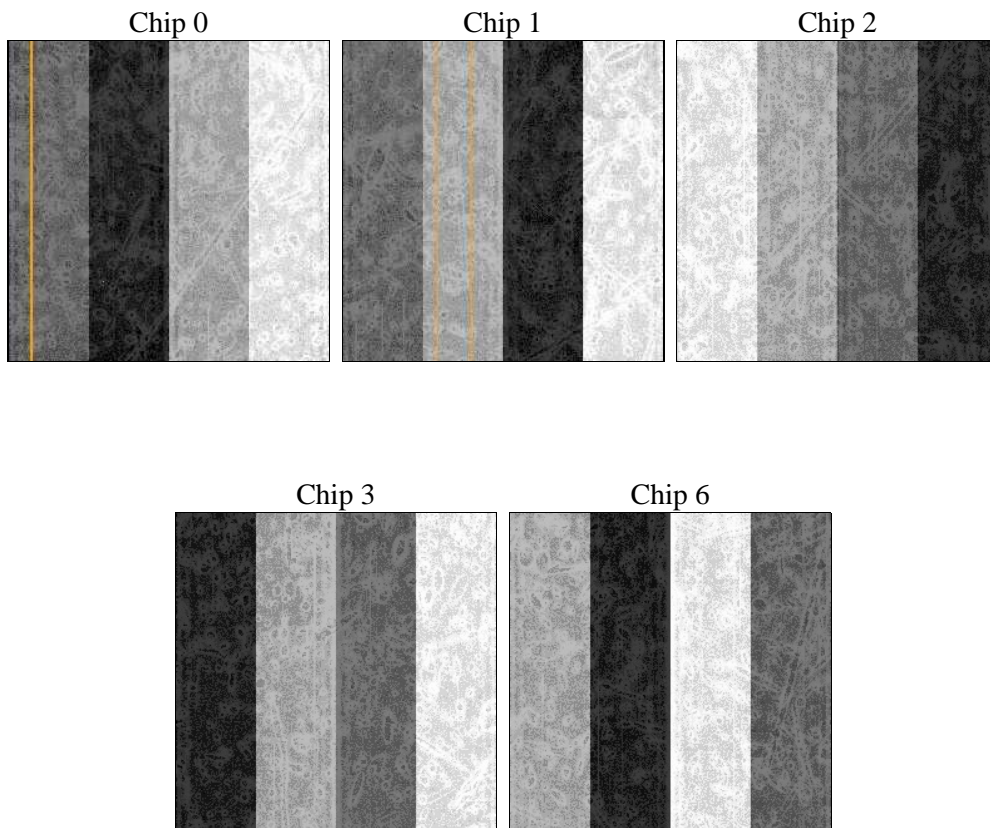
2 OBI

2.1 OBI

2.1.1 Images



2.1.2 Bias



2.1.3 Parameters

obi_num	0	Obi number	sched_exp_time	21800.000000	[s] Scheduled observation exposure time
ascdsver	8.4.5	Processing system revision	ontime	21885.999957889	Sum of GTIs [s]
caldbver	4.5.2	 	ontime0	21879.718117088	Sum of GTIs [s]
date	2012-10-17T12:06:36	Date and time of file creation	ontime1	21882.858987659	Sum of GTIs [s]
revision	3	Processing version of data	ontime2	21882.859087318	Sum of GTIs [s]
			ontime3	21885.999957889	Sum of GTIs [s]
			ontime6	21885.999957889	Sum of GTIs [s]
			l1events	521364	Number of level 1 events

2.1.4 Events

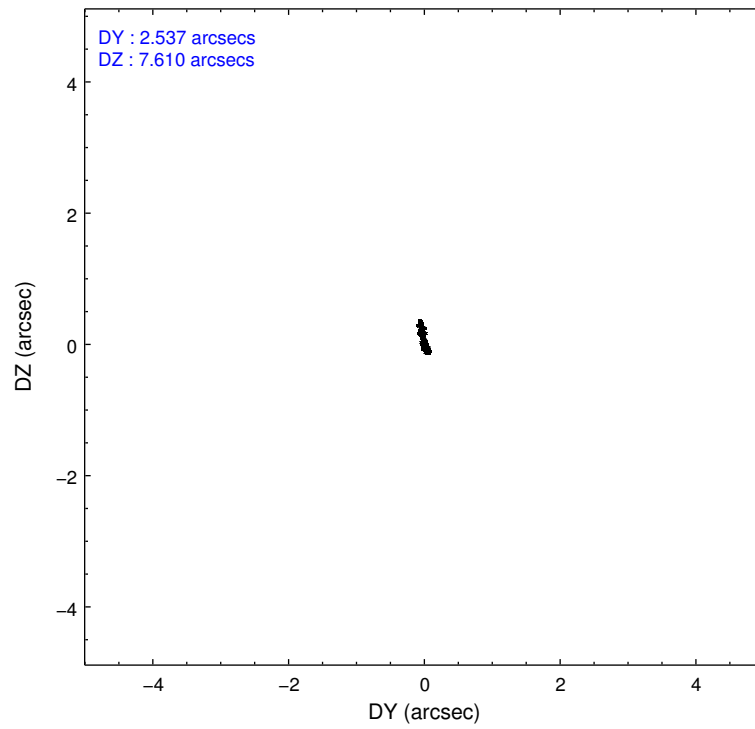
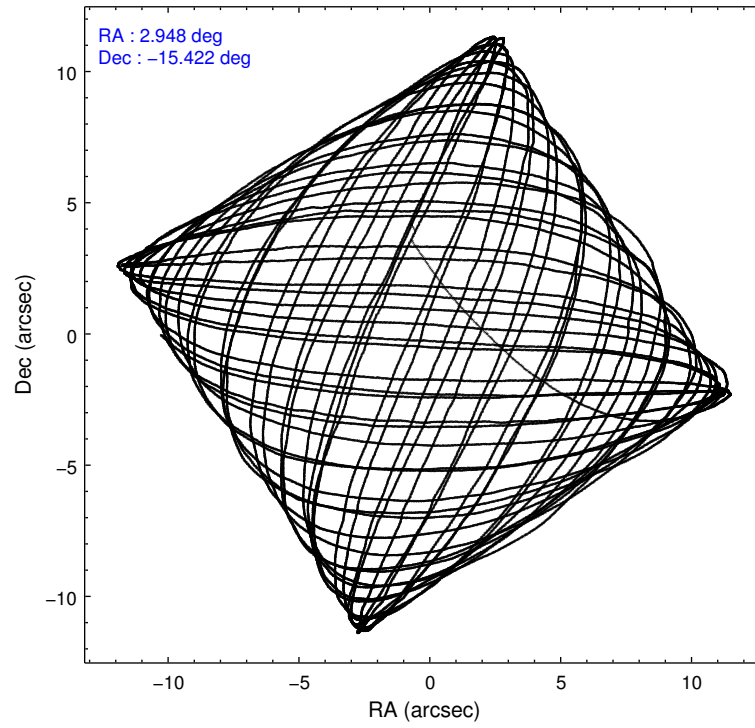
	ccd 0	ccd 1	ccd 2	ccd 3	ccd 6
level 1 events	96526	98246	107586	112800	106206
rejected events	85758	85940	97061	95696	95440
rejected %	88%	87%	90%	84%	89%

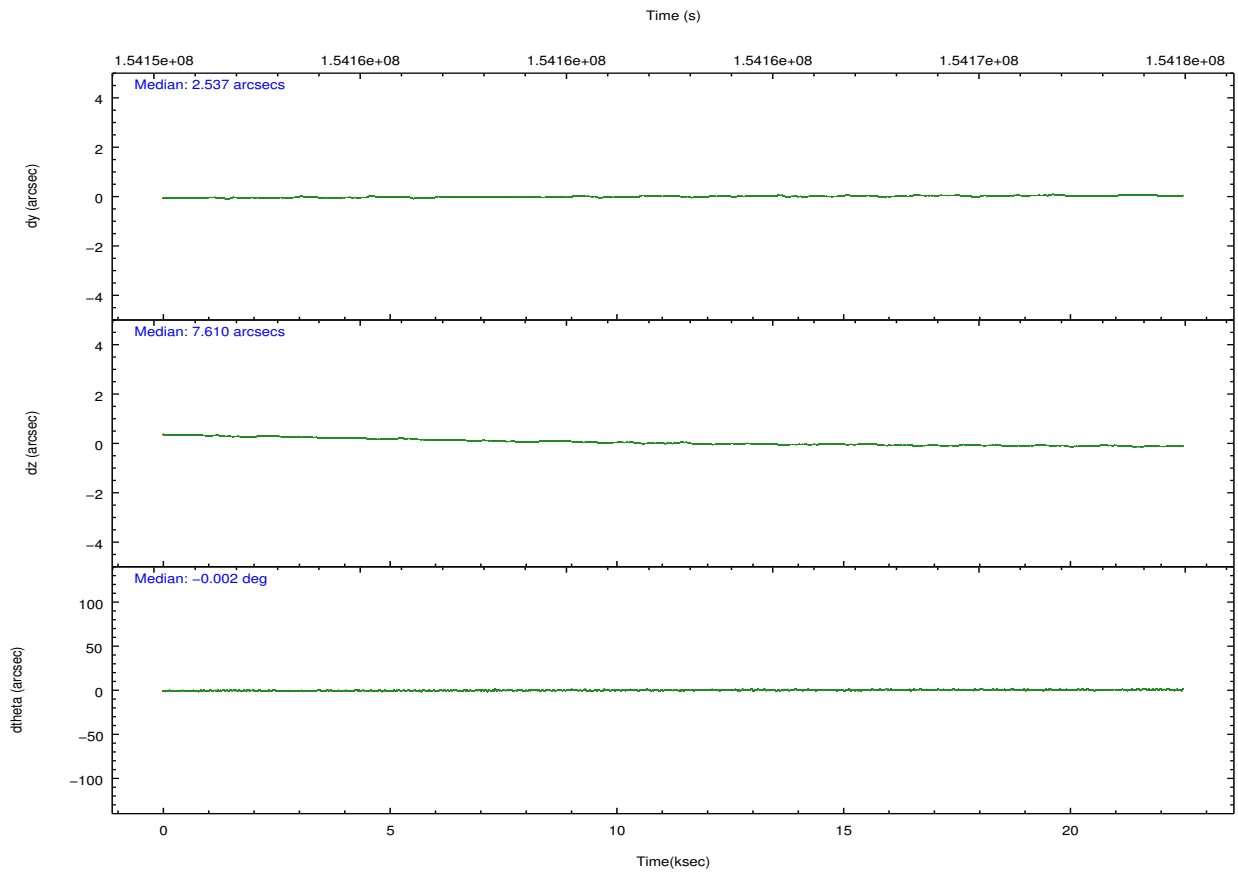
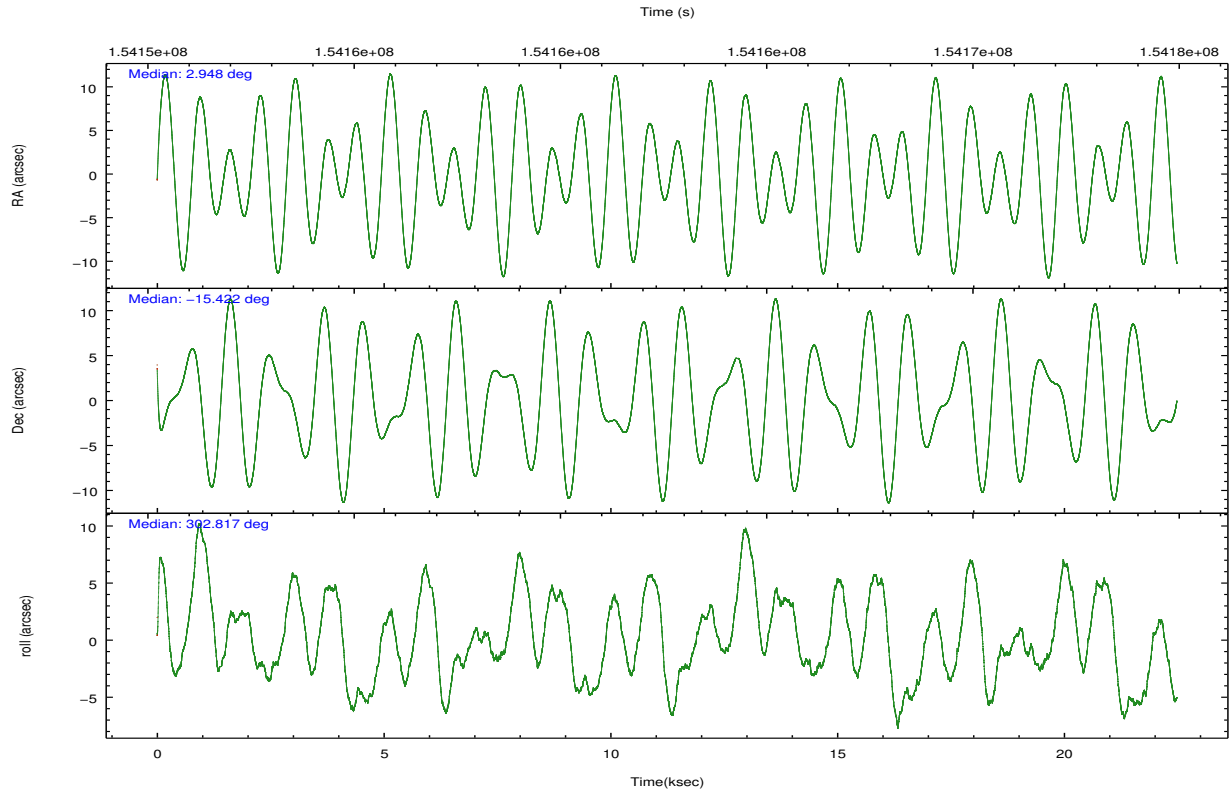
	ccd 0	ccd 1	ccd 2	ccd 3	ccd 6
grade 0 events	3976	4705	3813	9541	3773
	4%	4%	3%	8%	3%
grade 1 events	56	39	51	74	44
	0%	0%	0%	0%	0%
grade 2 events	2362	2495	2336	2800	2205
	2%	2%	2%	2%	2%
grade 3 events	1349	1362	1232	1297	1213
	1%	1%	1%	1%	1%
grade 4 events	1088	1361	1183	1358	1241
	1%	1%	1%	1%	1%
grade 5 events	3557	3902	3351	4032	4054
	3%	3%	3%	3%	3%
grade 6 events	1996	2384	1962	2116	2335
	2%	2%	1%	1%	2%
grade 7 events	82142	81998	93658	91582	91341
	85%	83%	87%	81%	86%

2.2 Compared Parameters

Parameter	Planned	Actual	Parameter	Planned	Actual
Instrument	ACIS	ACIS	Obspar format version number	7	7
Detector	ACIS-01236	ACIS-01236	Obspar file type	PREDICTED	ACTUAL
Grating	NONE	NONE	Obspar update status	NONE	UPDATED
Data mode	VFAINT	VFAINT	Number of optional ACIS chips dropped	0	0
Observation mode	POINTING	POINTING	On-chip summing requested	N	N
[deg] Pointing RA	2.922888	2.94822872510224	Subarray requested	NONE	NONE
[deg] Pointing Dec	-15.409680	-15.42211643208263	Alternating exposures requested	N	N
[deg] Pointing Roll	302.602015	302.8174365955137	[s] Primary exposure time	0.000000	3.1
[mm] SIM focus pos	-0.782348	-0.7809083437167272			
[mm] SIM defocus	0	0.001439871863259334			
[mm] SIM translation stage pos	-227.742463	-227.734108438797			
[mm] SIM translation stage offset	-5.85	-5.858344564132665			
[s] Observation start time (MET)	154152024.184000	154150812.42896			
Observation start date	2002-11-20T03:59:20	2002-11-20T03:40:12			
[s] Observation end time (MET)	154173824.184000	154174367.95494			
Observation end date	2002-11-20T10:02:40	2002-11-20T10:12:47			
Read mode	TIMED	TIMED			

2.3 Aspect



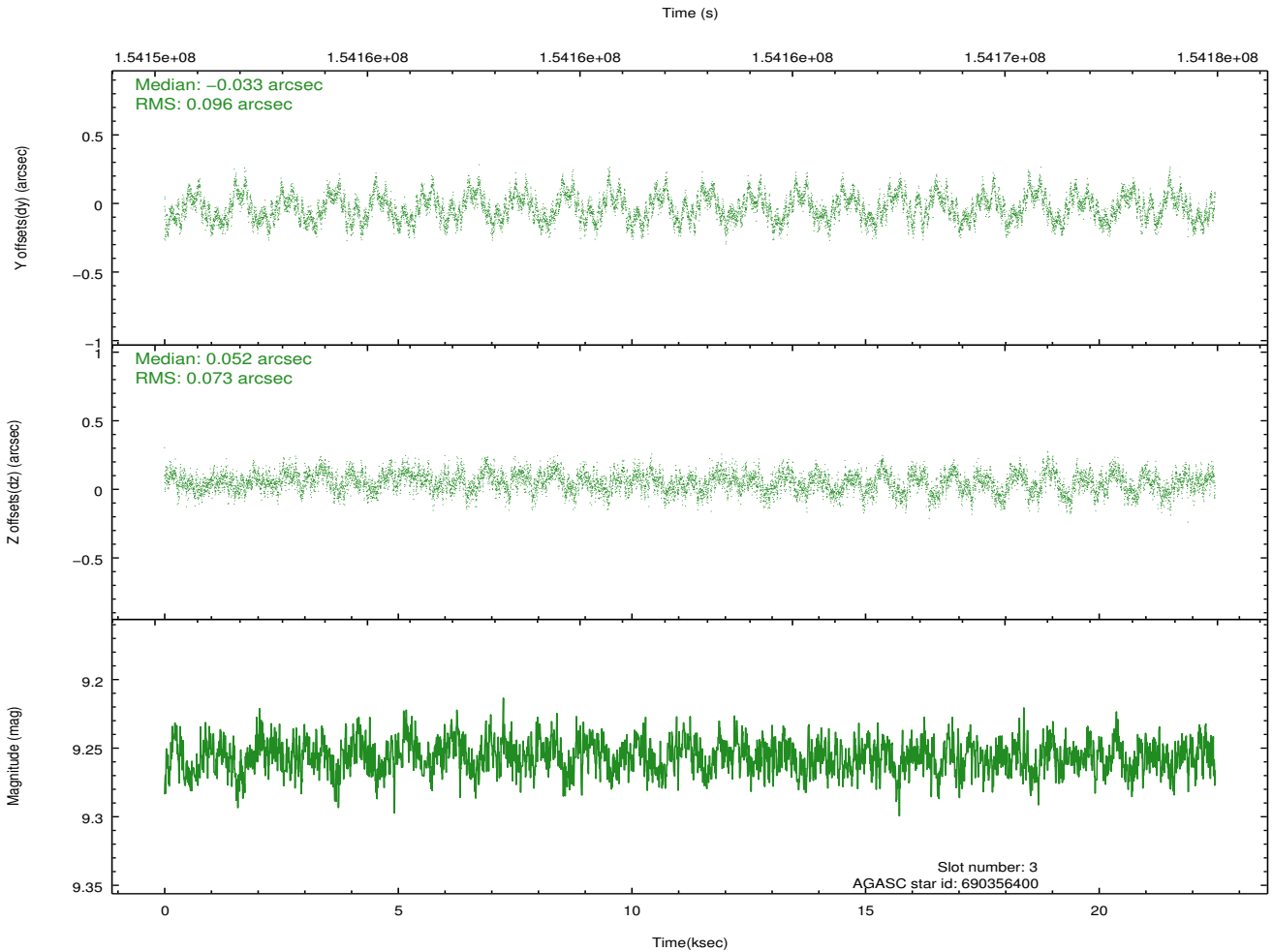
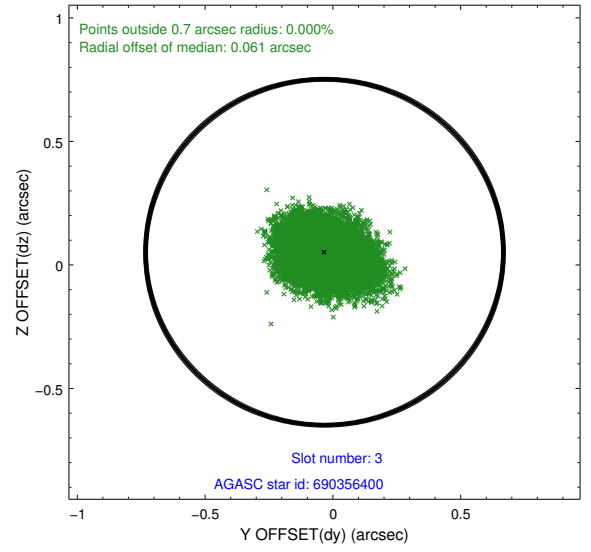
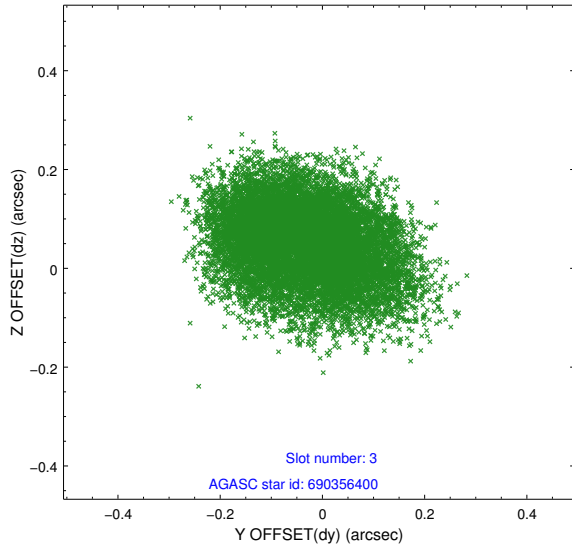


Slot Statistics

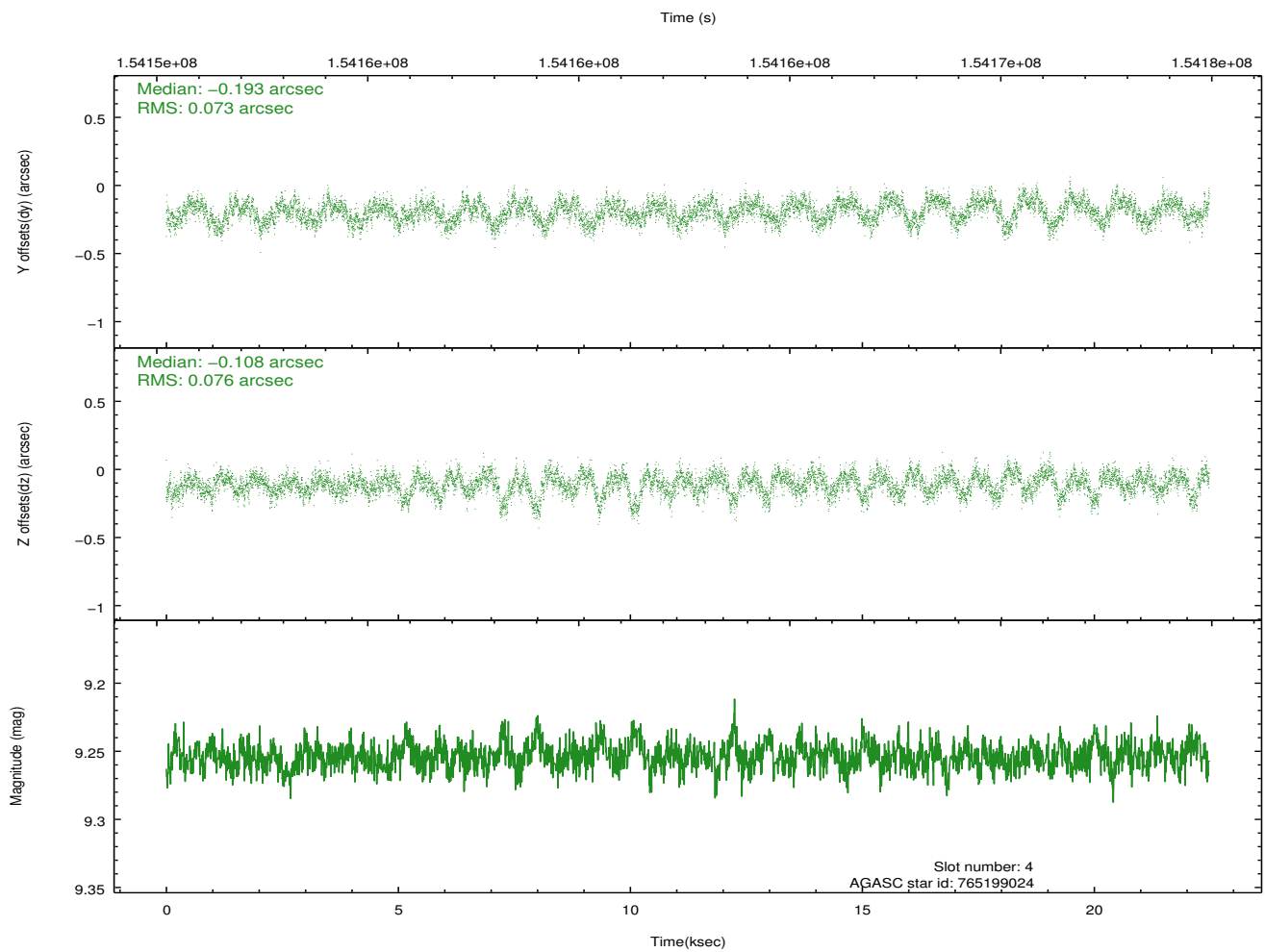
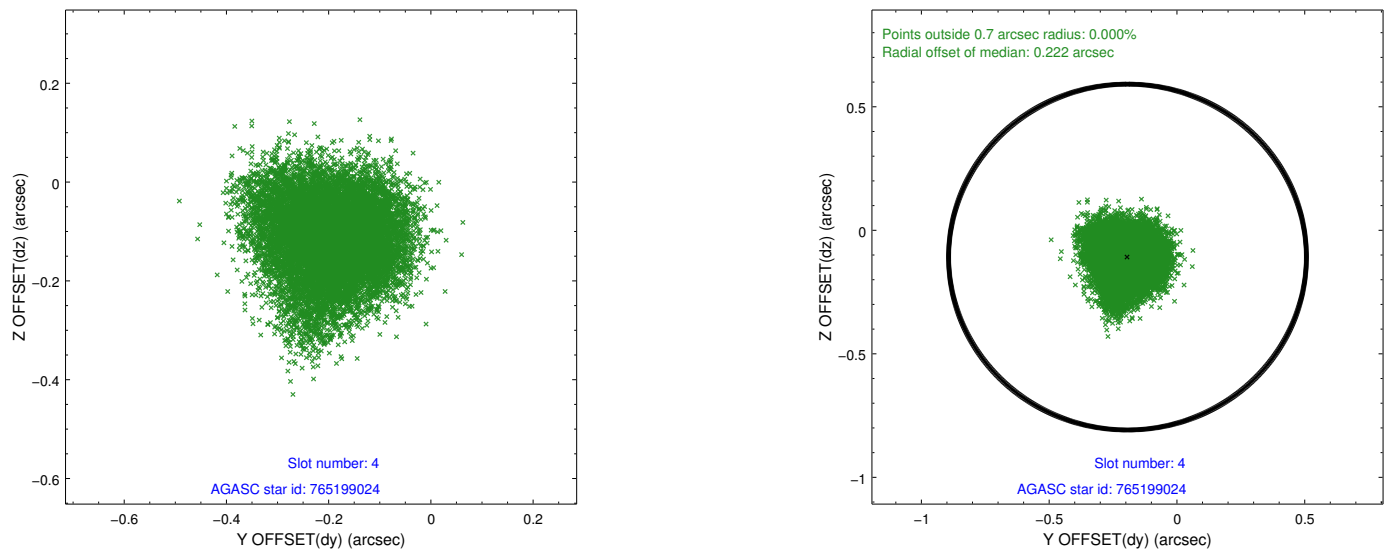
slot	status	id	mag	n_pts	med_dy	med_dz	dr1	dr2	ra	dec	mean_y	mean_z
0	FID	ACIS-I-1	7.24	5485	0.035	0.007	0.010	0.015	0.000000	0.000000	937.19	-951.31
1	FID	ACIS-I-5	7.24	5484	-0.131	0.067	0.012	0.017	0.000000	0.000000	-1810.99	946.16
2	FID	ACIS-I-6	7.25	5483	0.004	-0.004	0.016	0.023	0.000000	0.000000	402.56	1590.75
3	GUIDE	690356400	9.26	10962	-0.033	0.052	0.131	0.202	3.405177	-14.944552	-504.48	2314.38
4	GUIDE	765199024	9.25	10963	-0.193	-0.108	0.114	0.179	2.209547	-15.114434	-2226.85	-1518.19
5	GUIDE	765203584	9.50	10959	-0.069	-0.031	0.296	0.399	2.532852	-15.177110	-1433.84	-691.48
6	GUIDE	765334176	9.04	10966	0.126	0.029	0.113	0.170	3.031719	-15.842479	1516.75	-521.99
7	GUIDE	765334312	9.85	10961	0.168	0.066	0.108	0.174	3.342782	-15.495859	1048.57	1059.12

2.4 Star Slots

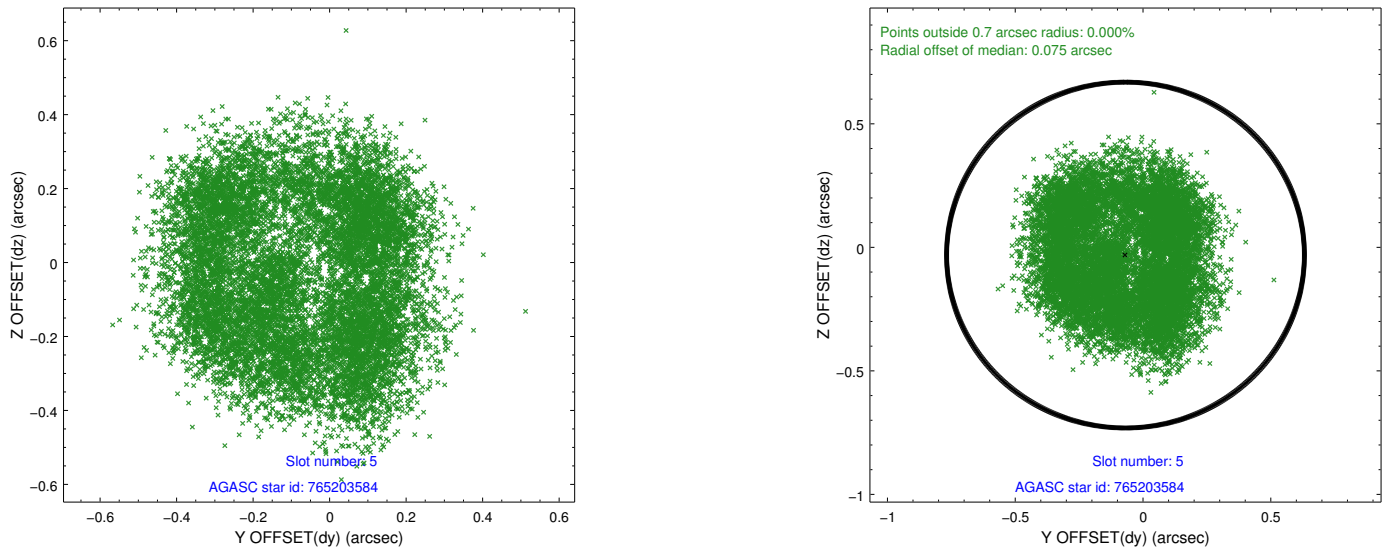
2.4.1 Slot 3



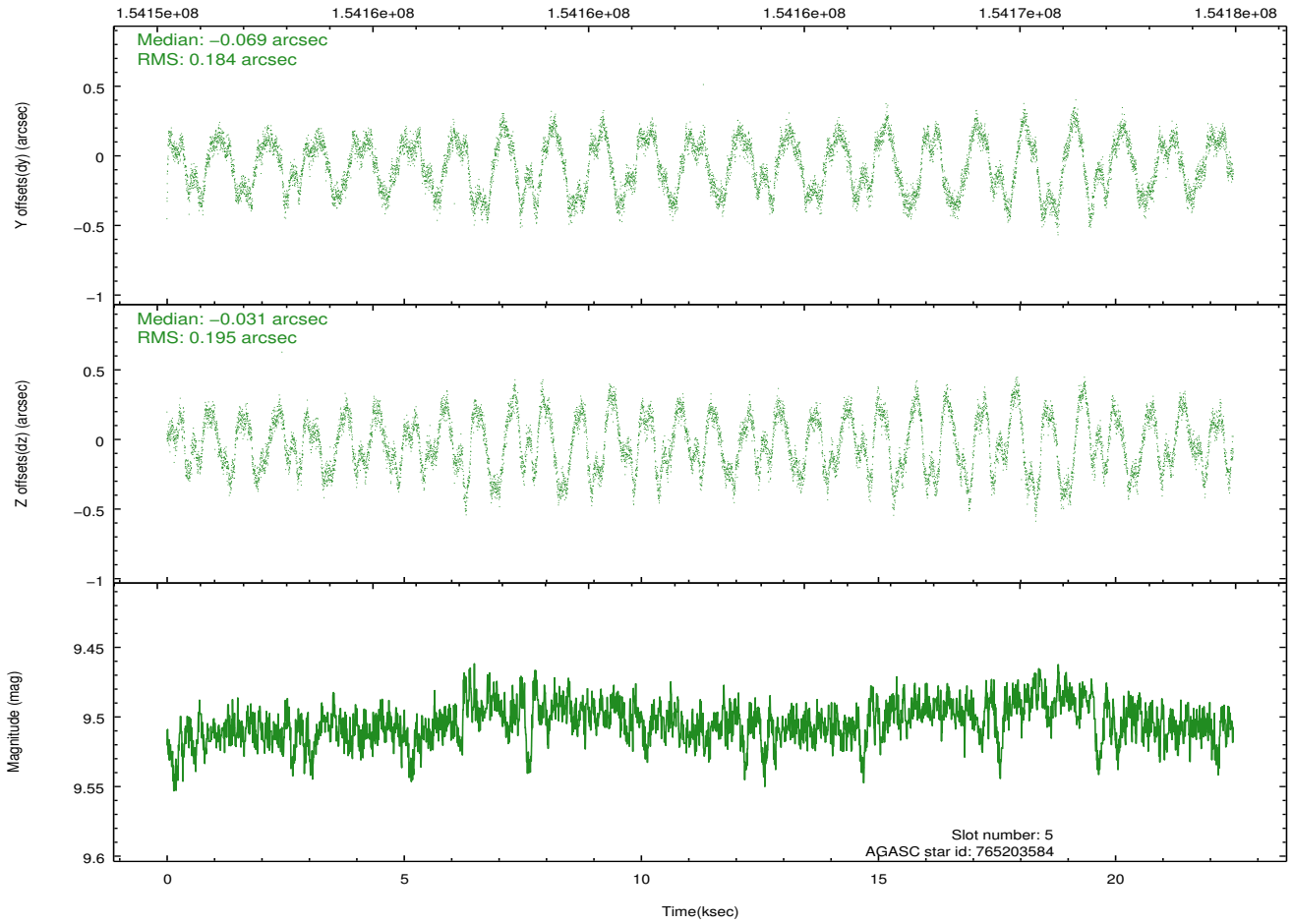
2.4.2 Slot 4



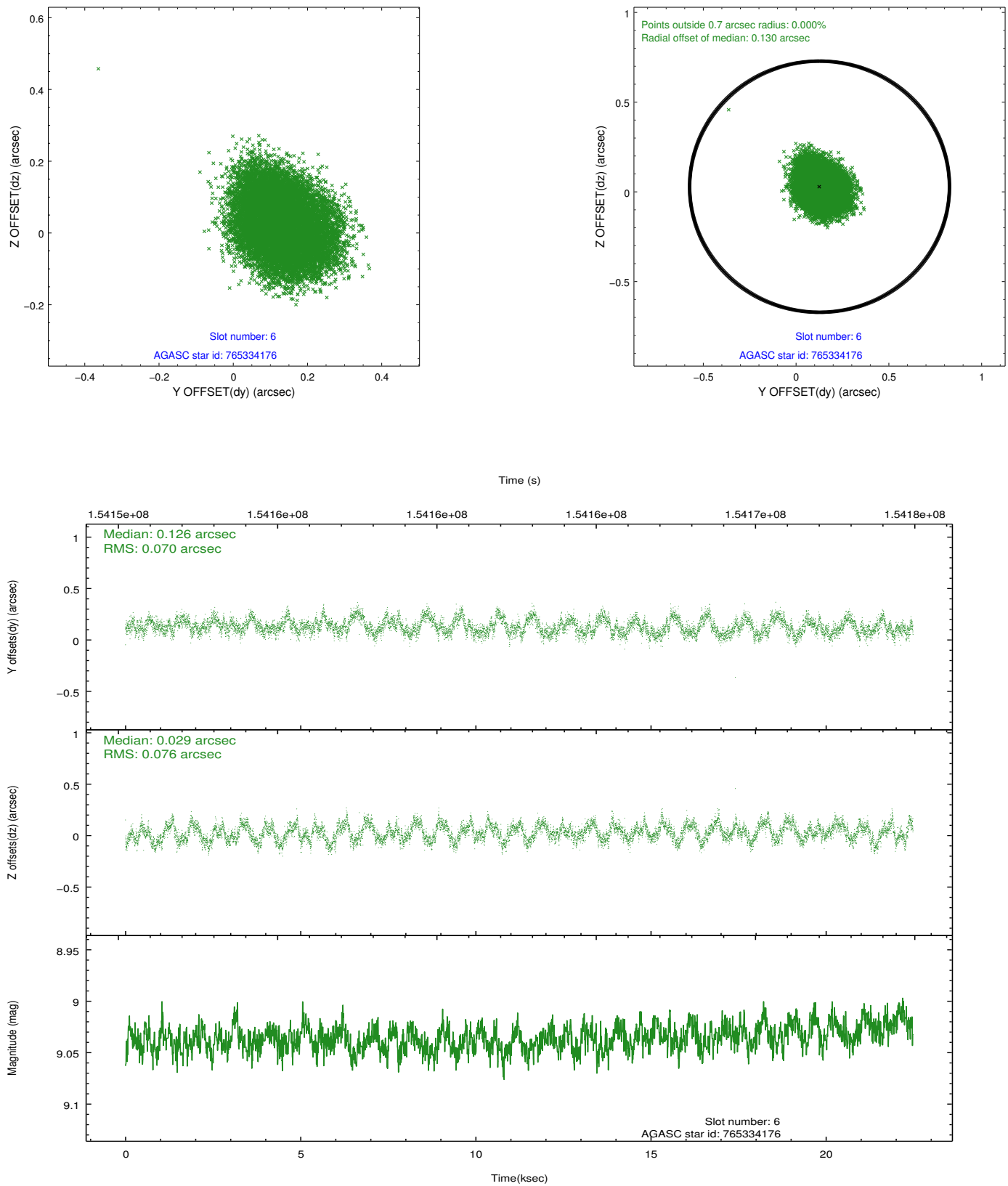
2.4.3 Slot 5



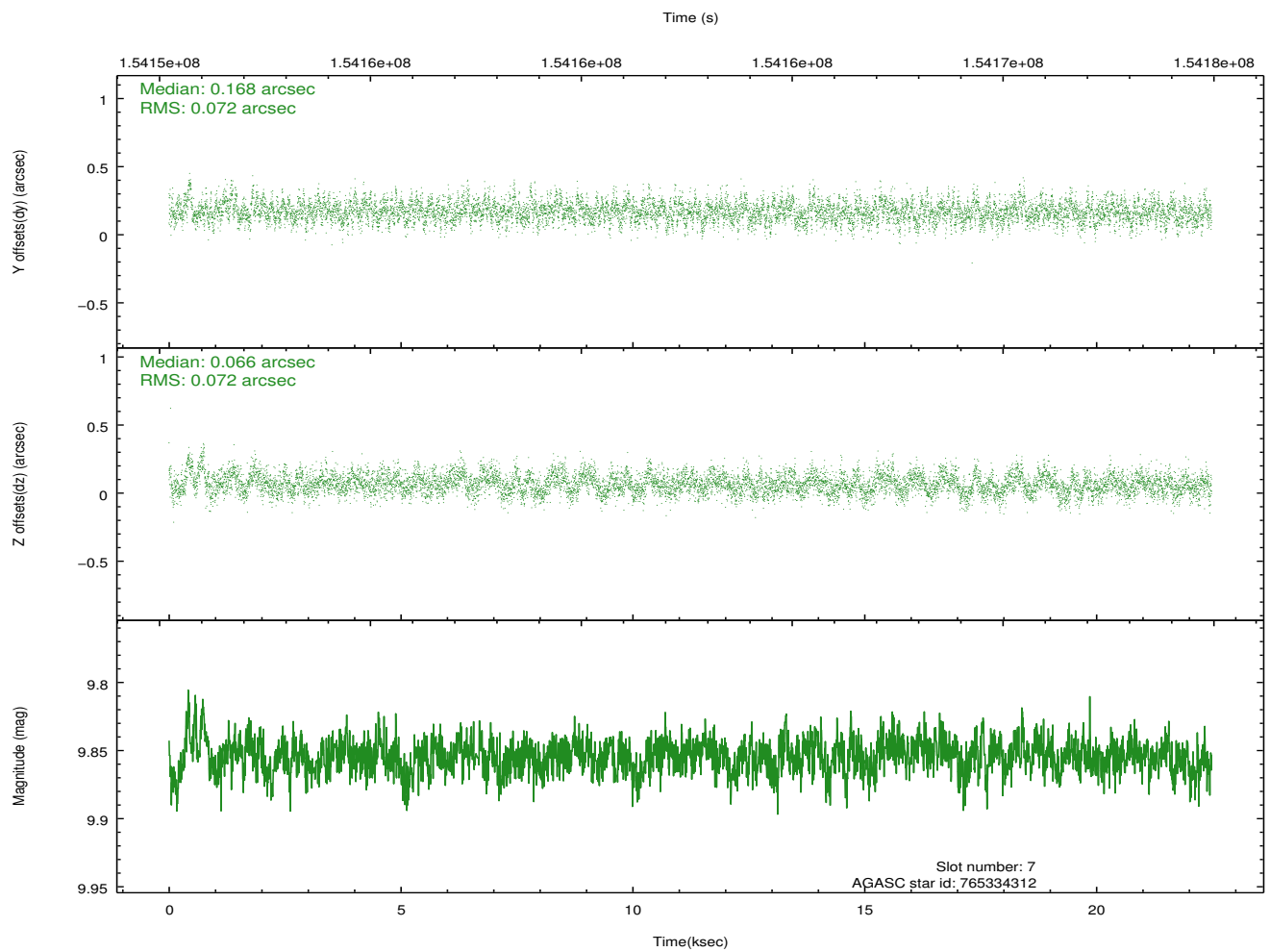
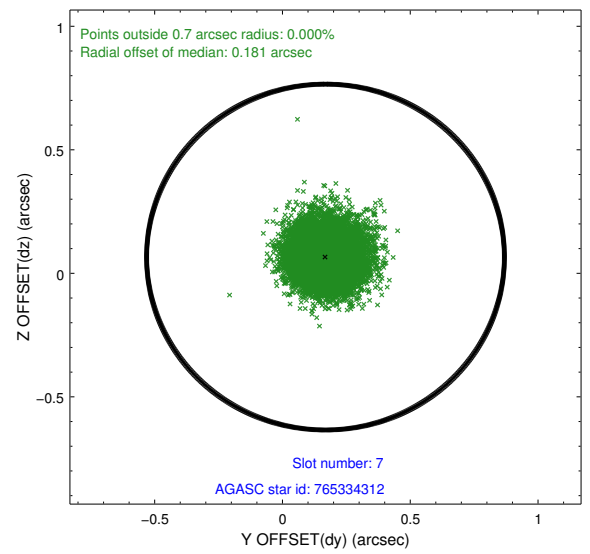
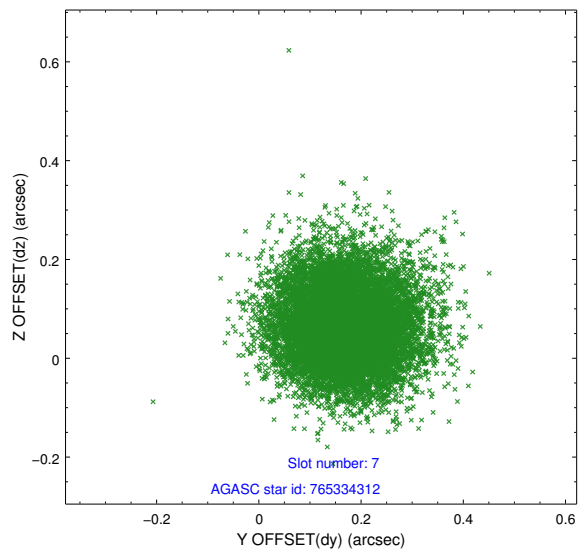
Time (s)



2.4.4 Slot 6

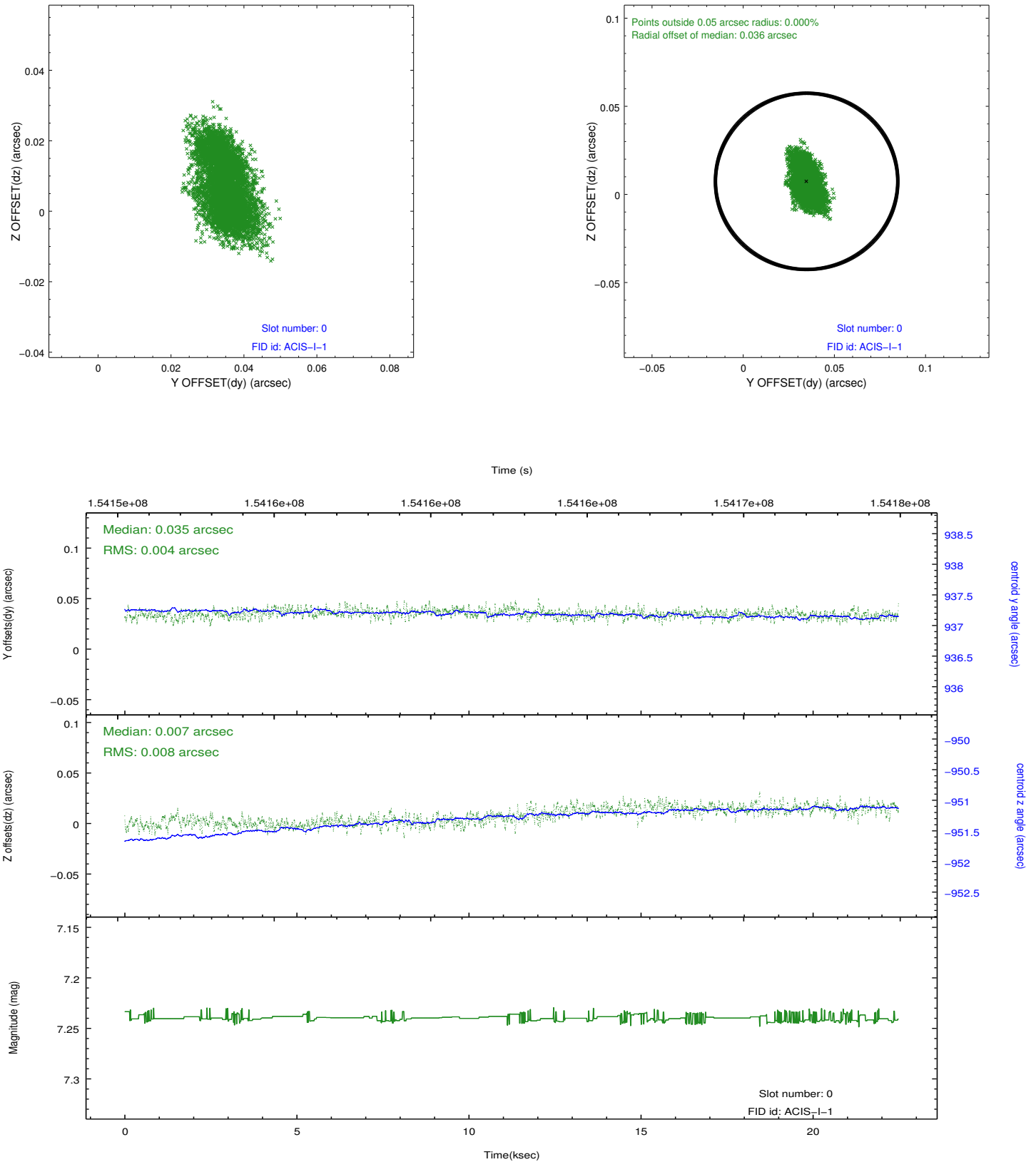


2.4.5 Slot 7

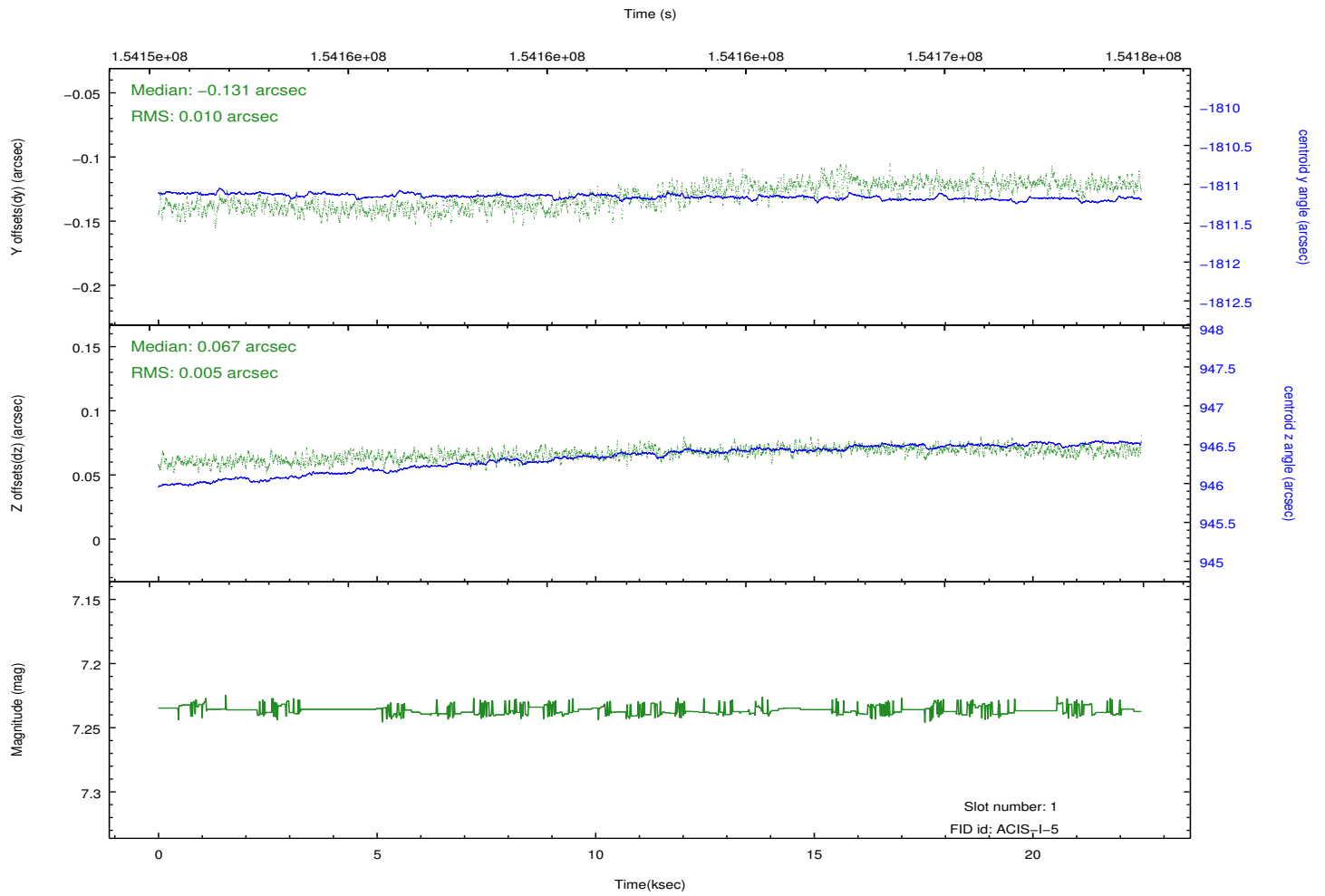
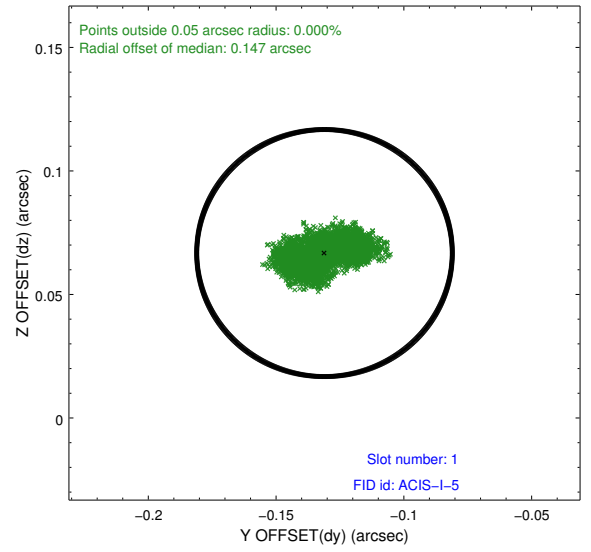
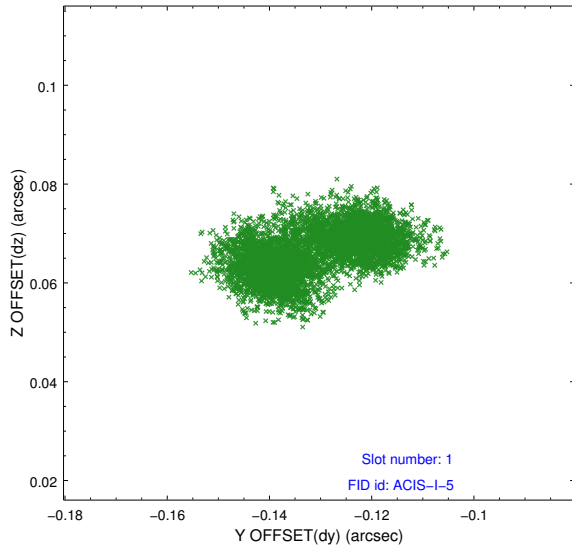


2.5 FID Slots

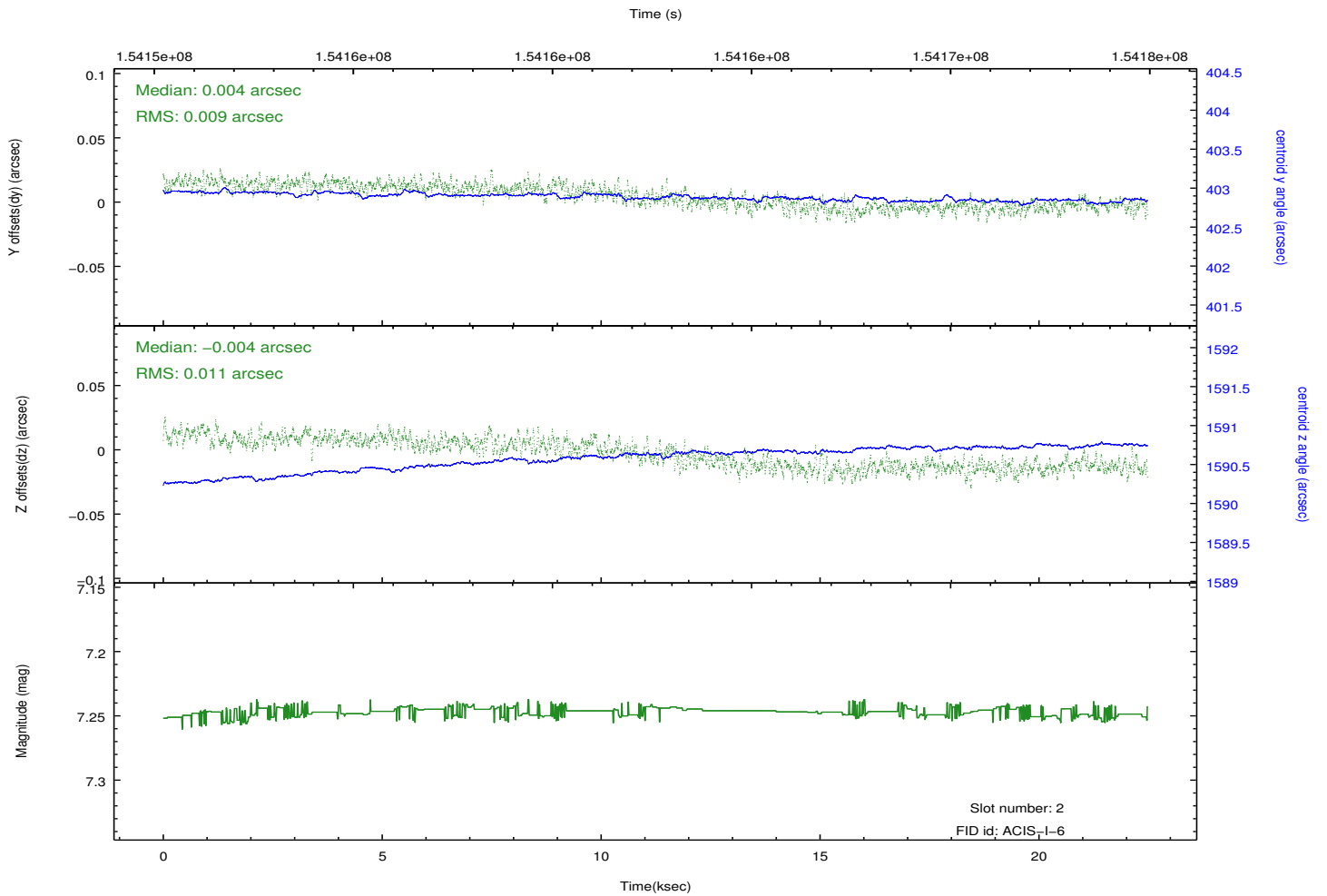
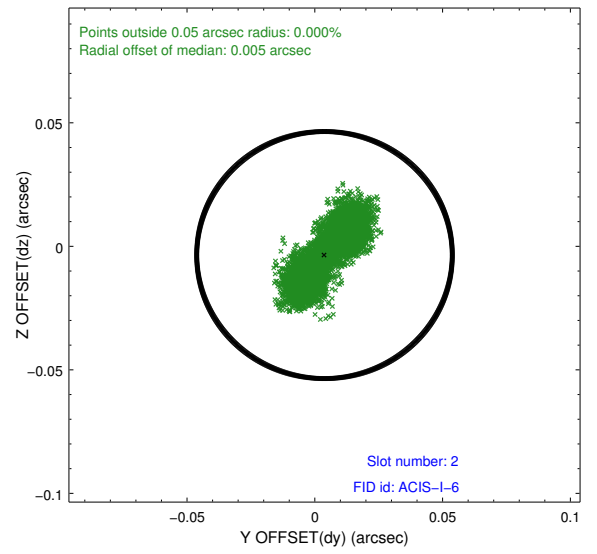
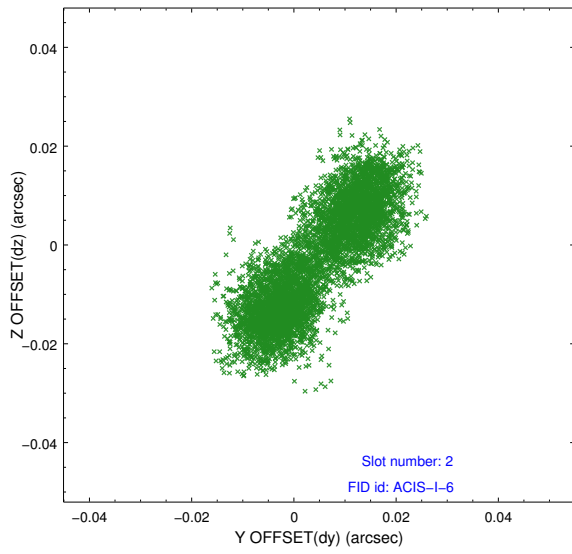
2.5.1 Slot 0



2.5.2 Slot 1



2.5.3 Slot 2



A Summary

A.1 Status

V&V Scientist	Jen Lauer
V&V Date (YYYY-MM-DD)	2012.10.26
V&V Edition	1
V&V Disposition and Status	OK
V&V Charge Time	21.889

A.2 Comments