

V&V Reference Report

L2 ASCDS Version : 8.4.5

Observation 3361 - L2 Version 3
Chandra X-Ray Center

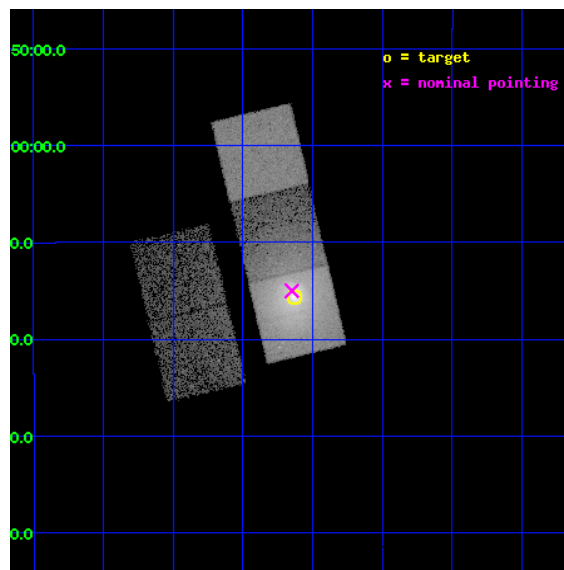
L2 Processing Date : Sep 25 2012

Contents

1	Front	2
2	OBI	3
2.1	OBI	3
2.1.1	Images	3
2.1.2	Bias	3
2.1.3	Parameters	4
2.1.4	Events	4
2.2	Compared Parameters	5
2.3	Aspect	6
2.4	Star Slots	9
2.4.1	Slot 3	9
2.4.2	Slot 4	10
2.4.3	Slot 5	11
2.4.4	Slot 6	12
2.4.5	Slot 7	13
2.5	FID Slots	14
2.5.1	Slot 0	14
2.5.2	Slot 1	15
2.5.3	Slot 2	16
A	Summary	17
A.1	Status	17
A.2	Comments	17

1 Front

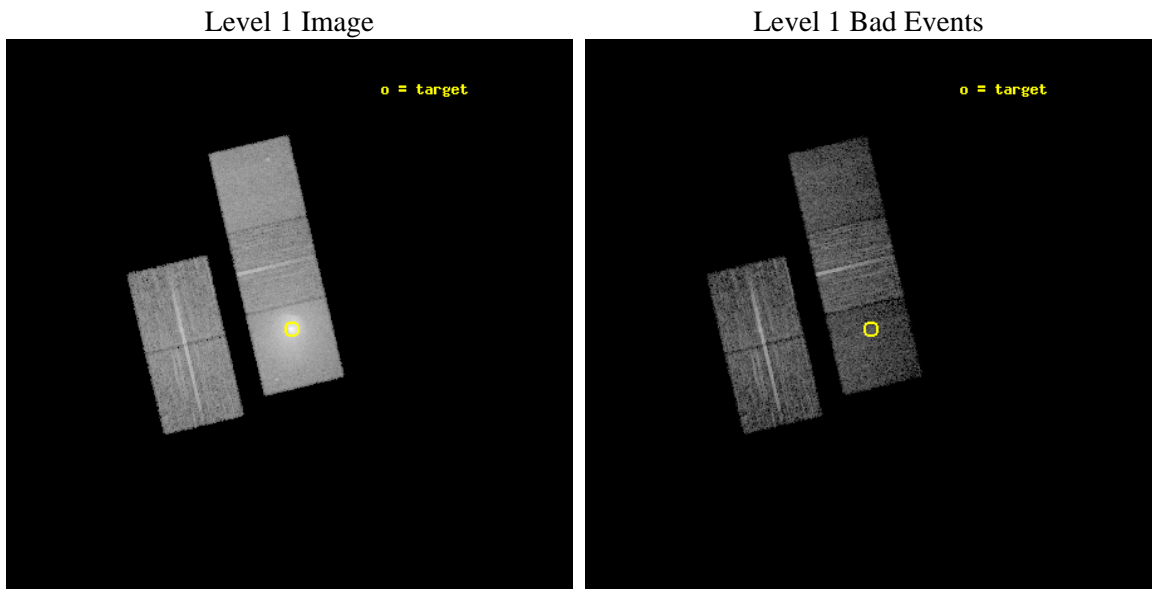
seq_num	800292	Sequence number
obs_id	3361	Observation id
title	SPATIAL DISTRIBUTION OF ABUNDANCE AND TEMPERATURE IN ABELL 496	Pro
observer	Dr. Raymond White	Principal investigator
object	ABELL 496	Source name
dtcycle	0	
cycle	P	events from which exps? Prim/Second/Both
ra_targ	68.4075	Observer's specified target RA [deg]
dec_targ	-13.26194	Observer's specified target Dec [deg]
ra_nom	68.412139496687	Nominal RA [deg]
dec_nom	-13.25025644659	Nominal Dec [deg]
roll_nom	76.73821362171	Nominal Roll [deg]
revision	3	Processing version of data
ontime	10127.959049165	Sum of GTIs [s]
livetime	9999.7127333599	Livetime [s]
ontime2	10127.959049165	Sum of GTIs [s]
ontime3	10131.200009421	Sum of GTIs [s]
ontime5	10131.200009421	Sum of GTIs [s]
ontime6	10131.200009421	Sum of GTIs [s]
ontime7	10127.959049165	Sum of GTIs [s]
l2events	204358	Number of level 2 events



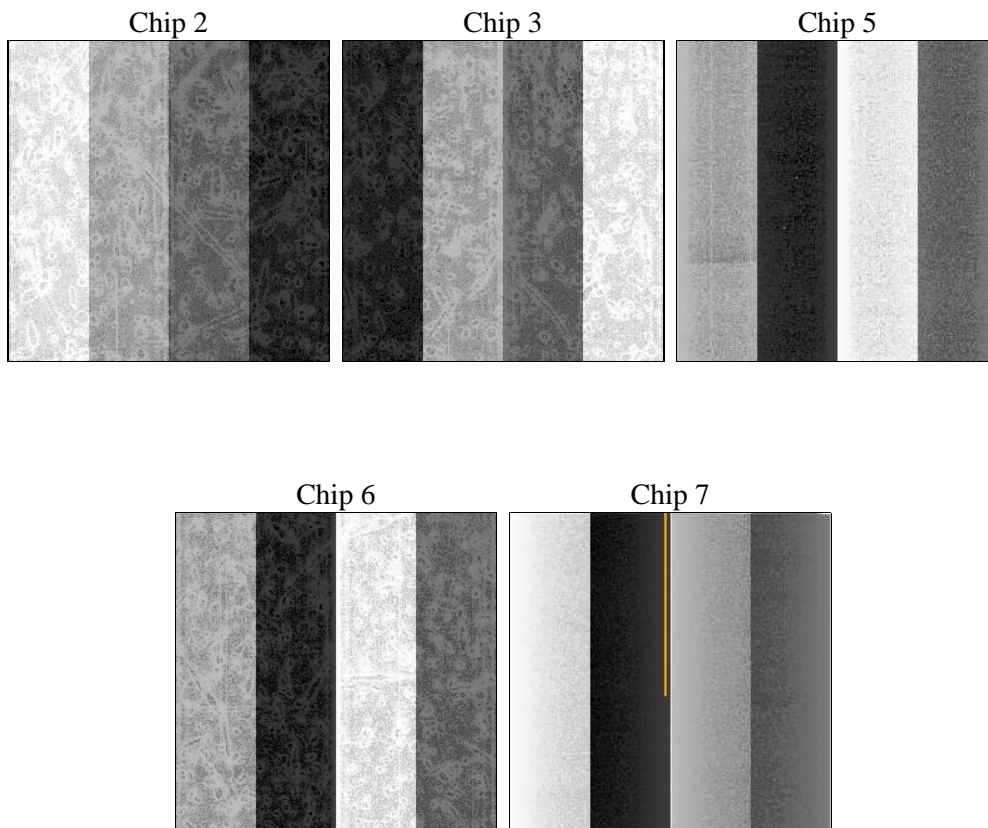
2 OBI

2.1 OBI

2.1.1 Images



2.1.2 Bias



2.1.3 Parameters

obi_num	1	Obi number	sched_exp_time	10000.000000	[s] Scheduled observation exposure time
ascdsver	8.4.5	Processing system revision	ontime	10127.959049165	Sum of GTIs [s]
caldbver	4.5.1.1	 	ontime2	10127.959049165	Sum of GTIs [s]
date	2012-09-25T02:36:57	Date and time of file creation	ontime3	10131.200009421	Sum of GTIs [s]
revision	3	Processing version of data	ontime5	10131.200009421	Sum of GTIs [s]
			ontime6	10131.200009421	Sum of GTIs [s]
			ontime7	10127.959049165	Sum of GTIs [s]
			l1events	415956	Number of level 1 events

2.1.4 Events

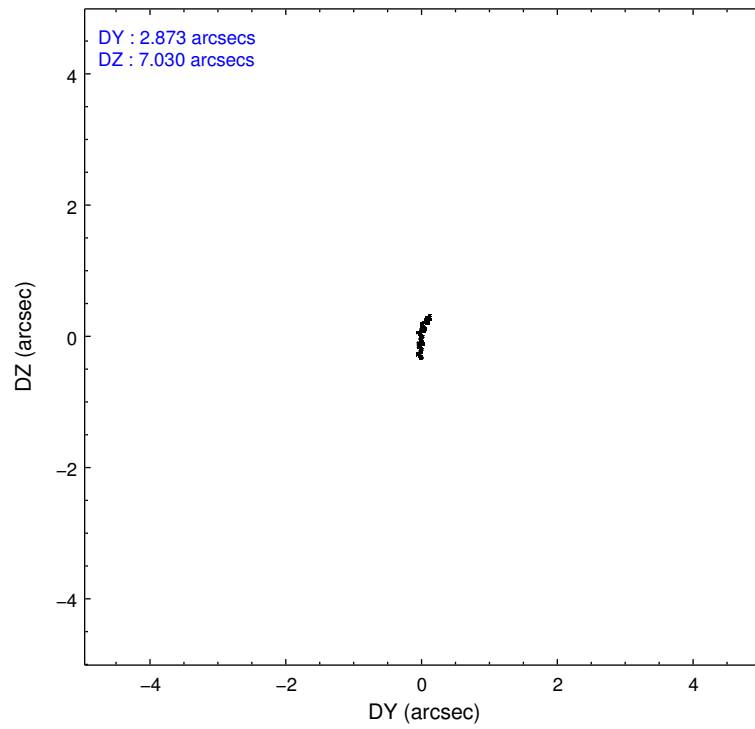
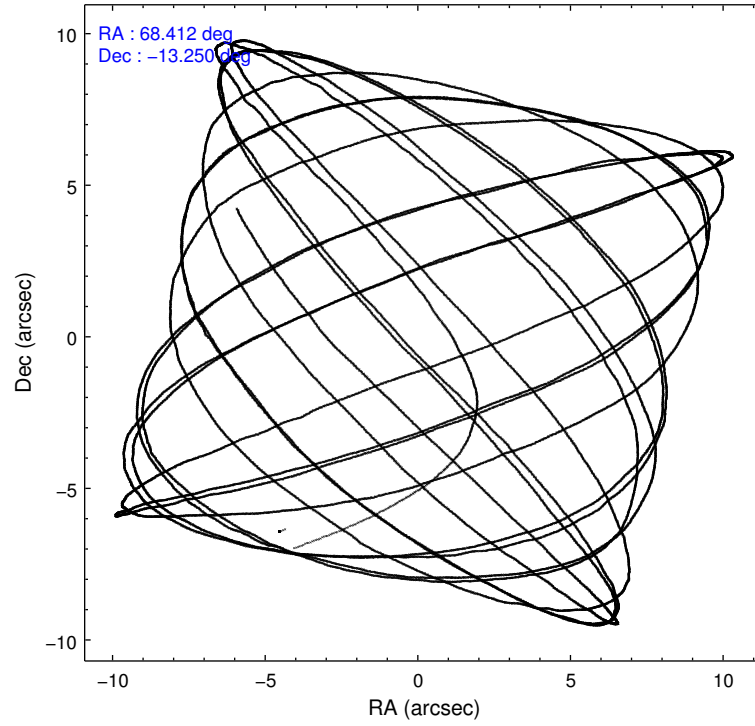
	ccd 2	ccd 3	ccd 5	ccd 6	ccd 7
level 1 events	55726	52793	71271	70278	165888
rejected events	48704	45843	32154	49711	28906
rejected %	87%	86%	45%	70%	17%

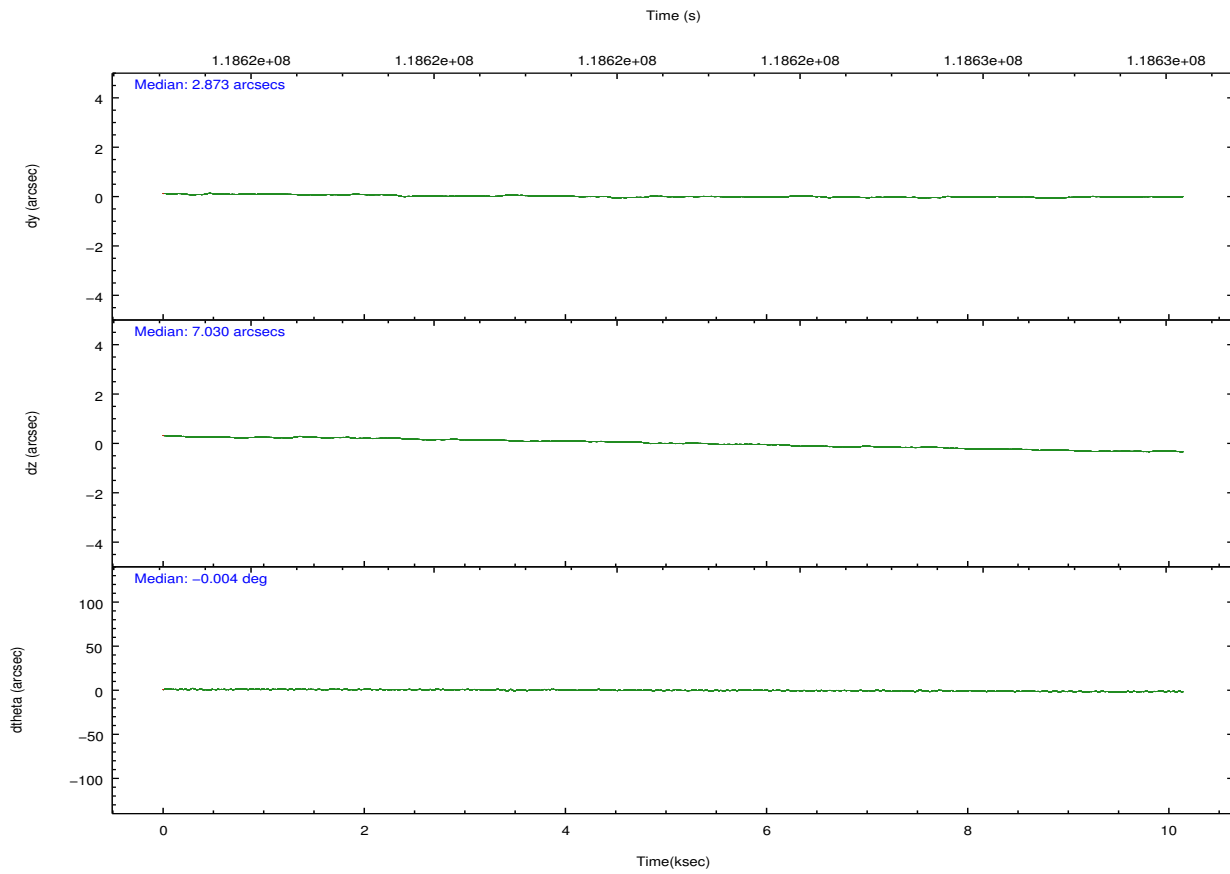
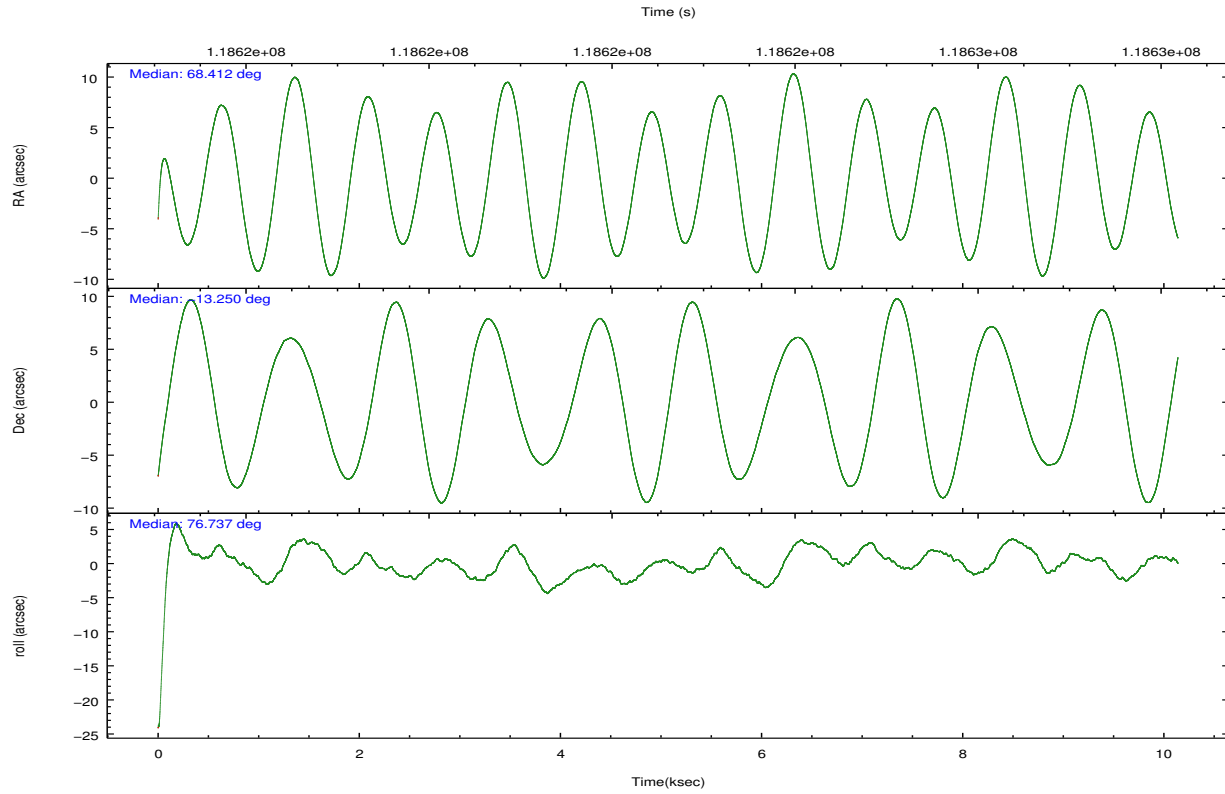
	ccd 2	ccd 3	ccd 5	ccd 6	ccd 7
grade 0 events	3464	3629	4612	14445	35856
	6%	6%	6%	20%	21%
grade 1 events	25	27	67	57	69
	0%	0%	0%	0%	0%
grade 2 events	1424	1184	11469	2807	34167
	2%	2%	16%	3%	20%
grade 3 events	549	569	2312	1022	15376
	0%	1%	3%	1%	9%
grade 4 events	595	602	2293	915	15425
	1%	1%	3%	1%	9%
grade 5 events	1394	1661	5298	1865	6179
	2%	3%	7%	2%	3%
grade 6 events	1008	997	18567	1443	36684
	1%	1%	26%	2%	22%
grade 7 events	47267	44124	26653	47724	22132
	84%	83%	37%	67%	13%

2.2 Compared Parameters

Parameter	Planned	Actual	Parameter	Planned	Actual
Instrument	ACIS	ACIS	Obspar format version number	7	7
Detector	ACIS-23567	ACIS-23567	Obspar file type	PREDICTED	ACTUAL
Grating	NONE	NONE	Obspar update status	NONE	UPDATED
Data mode	VFAINT	VFAINT	Number of optional ACIS chips dropped	0	0
Observation mode	POINTING	POINTING	On-chip summing requested	N	N
[deg] Pointing RA	68.420539	68.41213949668688	Subarray requested	NONE	NONE
[deg] Pointing Dec	-13.276272	-13.25025644659027	Alternating exposures requested	N	N
[deg] Pointing Roll	76.583541	76.73821362170956	[s] Primary exposure time	0.000000	3.2
[mm] SIM focus pos	-0.684267	-0.6828225247311905			
[mm] SIM defocus	0	0.001444936568705701			
[mm] SIM translation stage pos	-190.132523	-190.1400660498719			
[mm] SIM translation stage offset	0	0.00754346686406393			
[s] Observation start time (MET)	118617683.184000	118616544.0455			
Observation start date	2001-10-04T21:20:19	2001-10-04T21:02:24			
[s] Observation end time (MET)	118627683.184000	118629223.296			
Observation end date	2001-10-05T00:06:59	2001-10-05T00:33:43			
Read mode	TIMED	TIMED			

2.3 Aspect





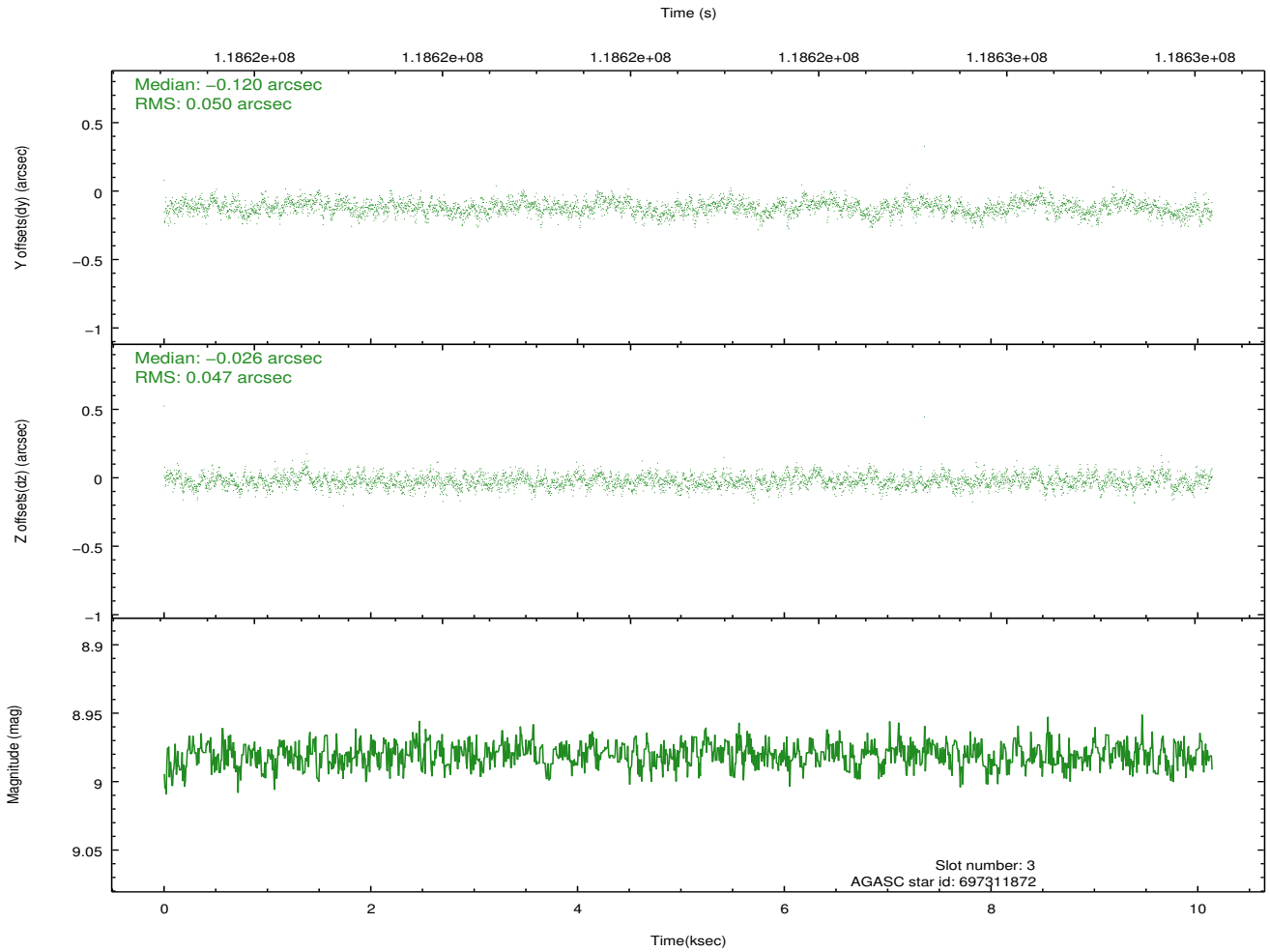
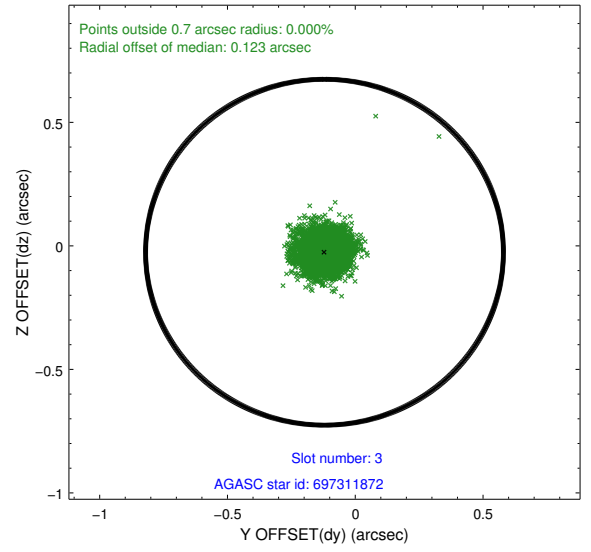
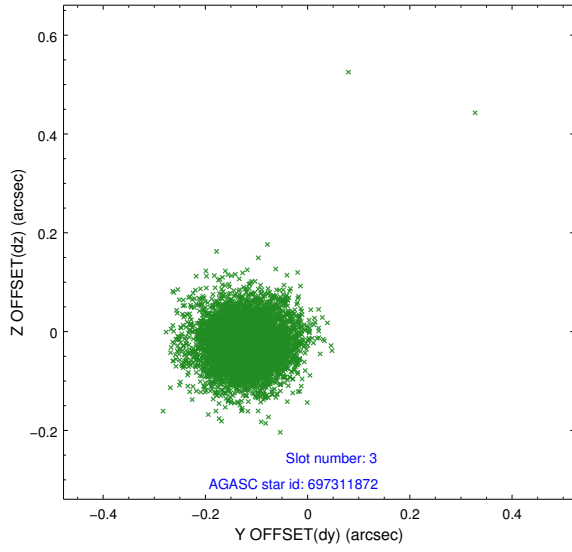
Slot Statistics

slot	status	id	mag	n_pts	med_dy	med_dz	dr1	dr2	ra	dec	mean_y	mean_z
0	FID	ACIS-S-2	7.11	2474	-0.006	0.015	0.009	0.014	0.000000	0.000000	-755.53	-1728.17
1	FID	ACIS-S-4	7.20	2474	-0.049	-0.001	0.006	0.011	0.000000	0.000000	2157.47	179.76
2	FID	ACIS-S-5	7.23	2474	0.024	-0.005	0.008	0.015	0.000000	0.000000	-1807.67	174.01
3	GUIDE	697311872	8.98	4947	-0.120	-0.026	0.072	0.118	68.096651	-12.552675	2269.55	1711.98
4	GUIDE	697317744	8.91	4945	-0.162	0.102	0.081	0.130	68.814094	-12.965653	1407.96	-1082.78
5	GUIDE	697312112	9.61	4945	0.236	-0.014	0.091	0.149	68.203644	-13.816922	-2068.30	286.03
6	GUIDE	697311296	9.15	4944	0.155	-0.163	0.087	0.147	67.817784	-13.358108	-778.64	1984.97
7	GUIDE	697317872	9.92	4942	-0.104	0.101	0.136	0.218	68.842801	-12.751213	2181.77	-1002.81

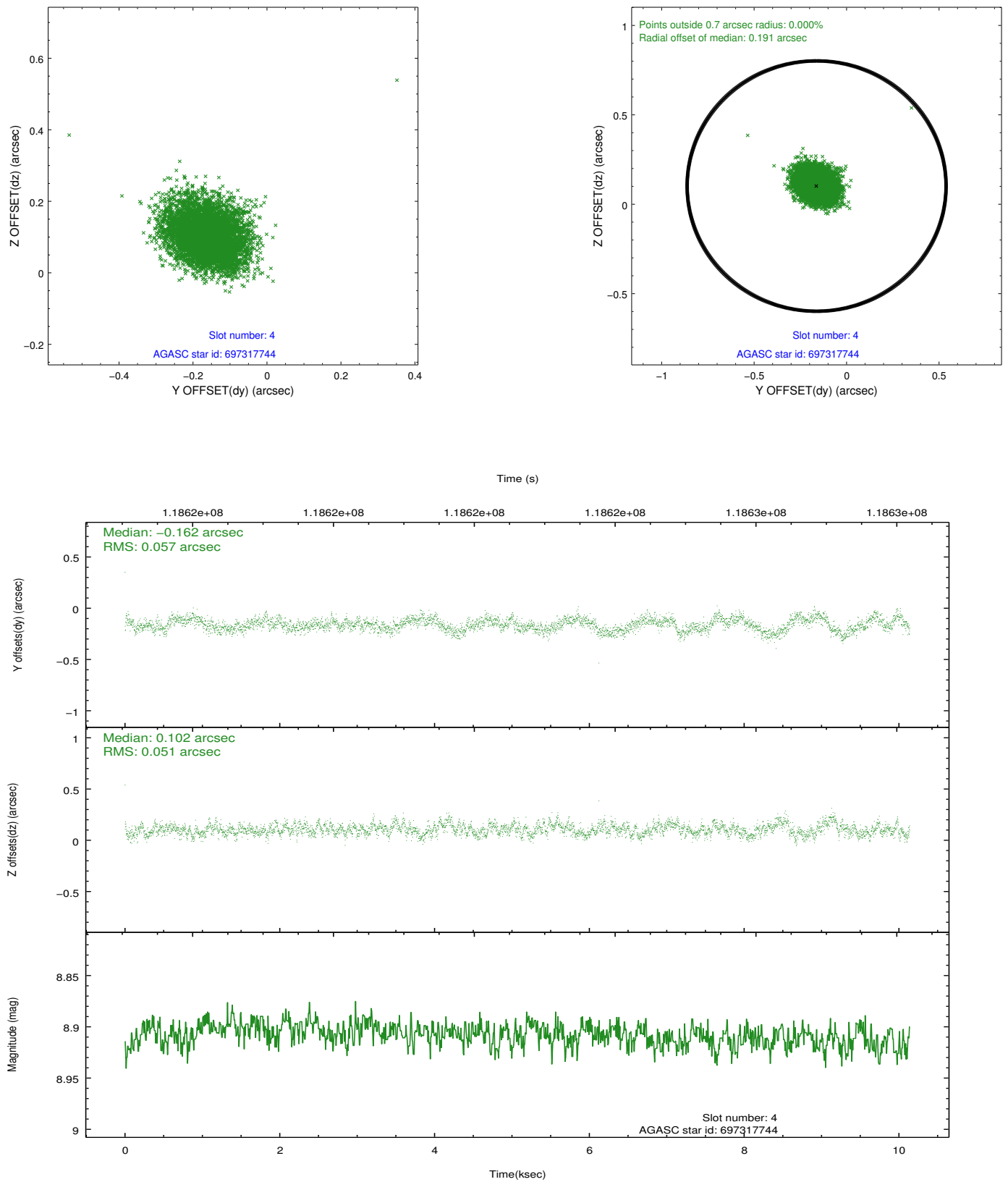
∞

2.4 Star Slots

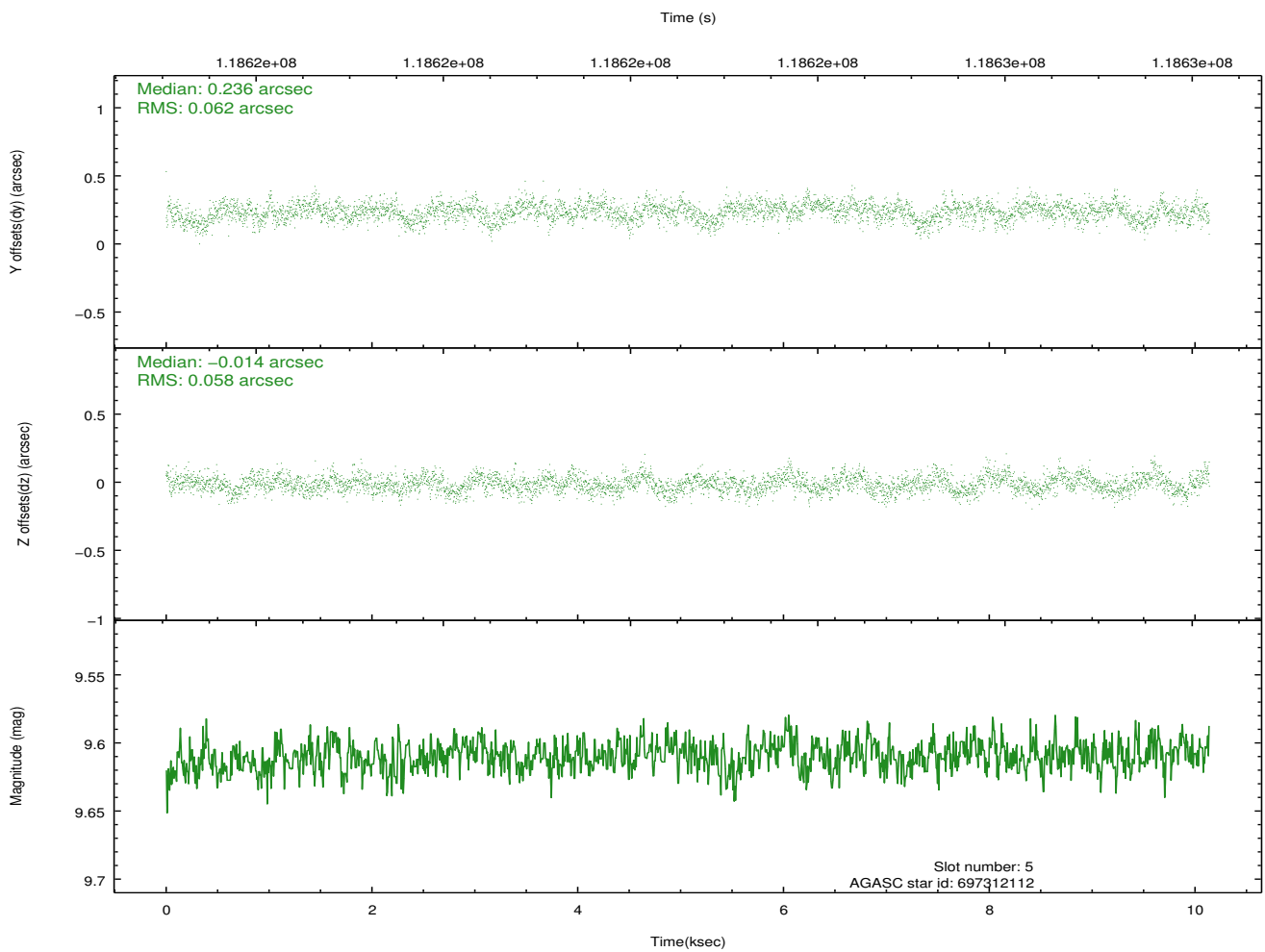
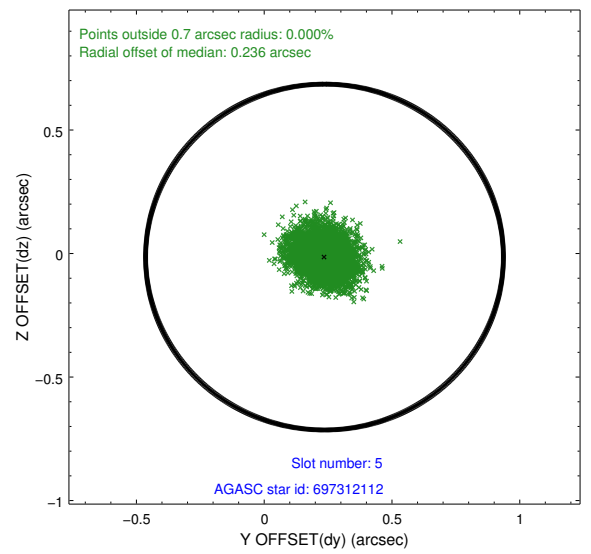
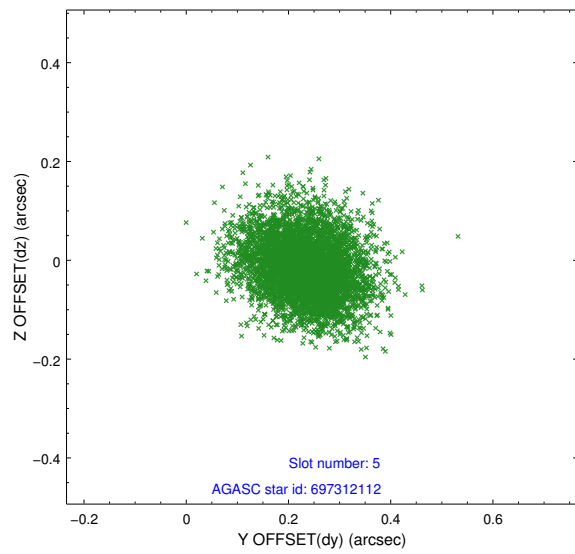
2.4.1 Slot 3



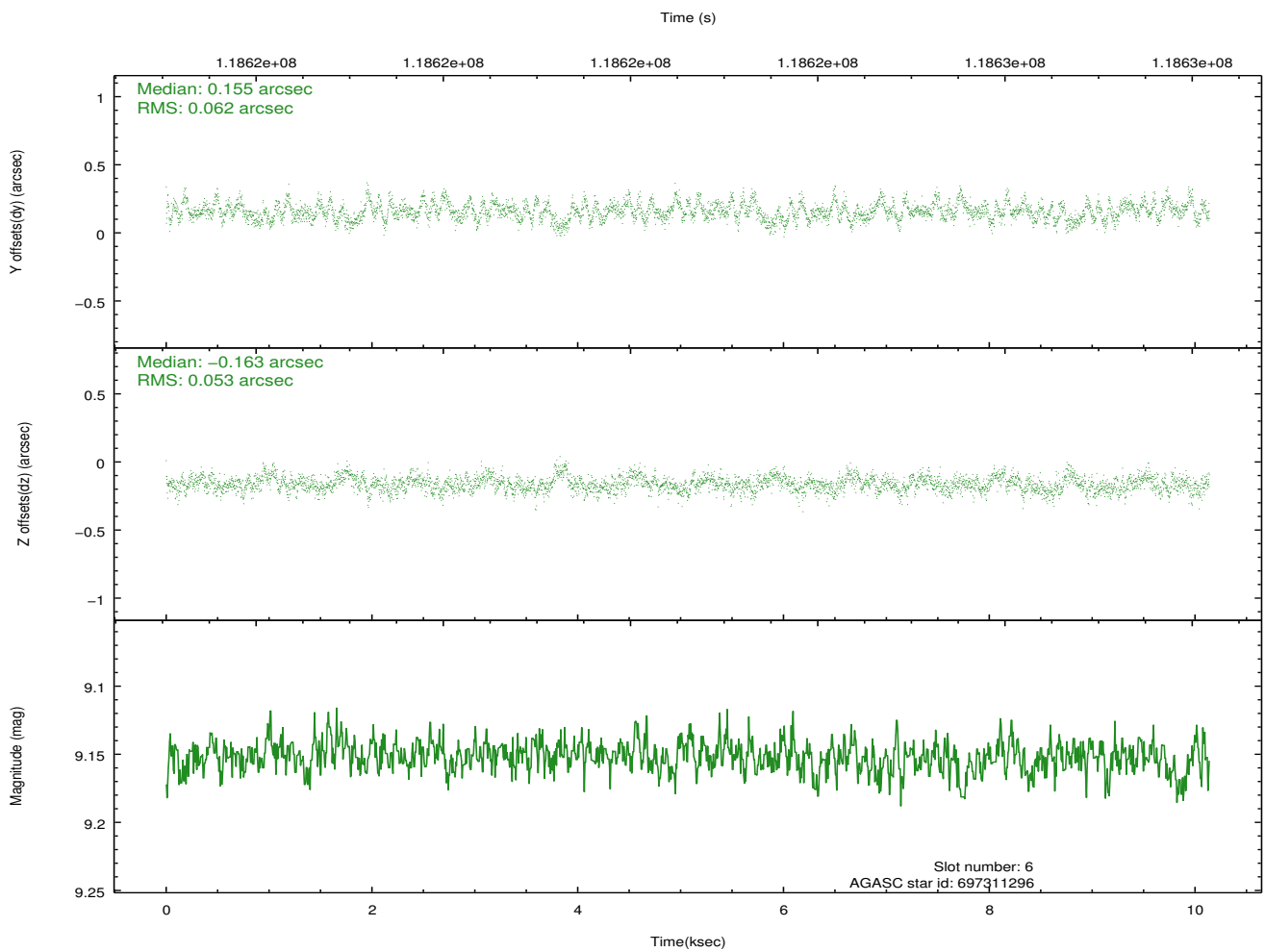
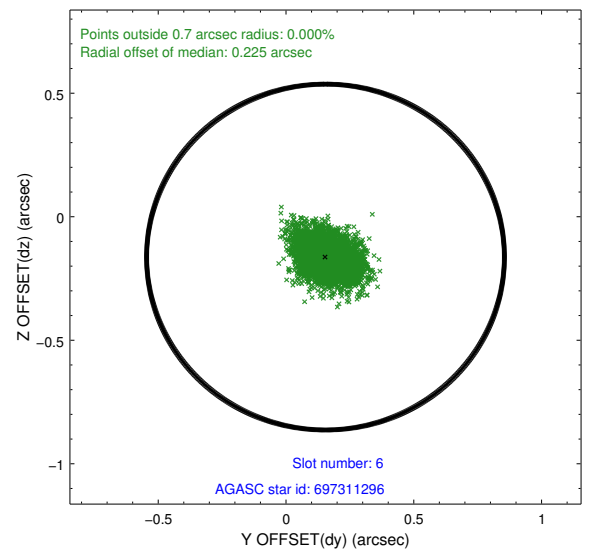
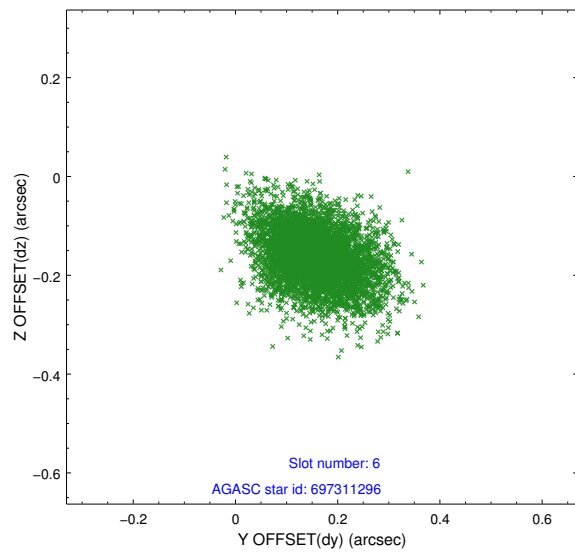
2.4.2 Slot 4



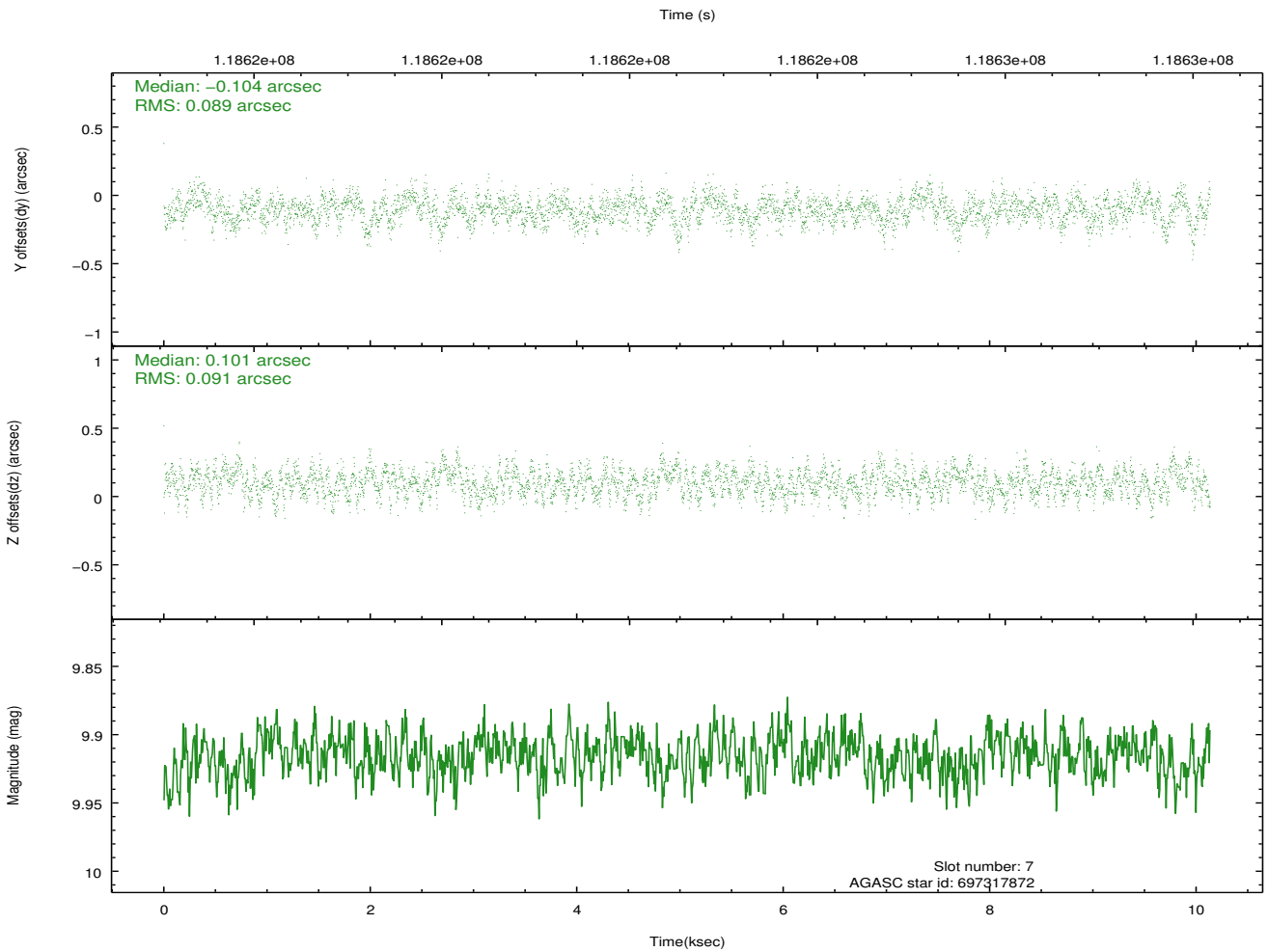
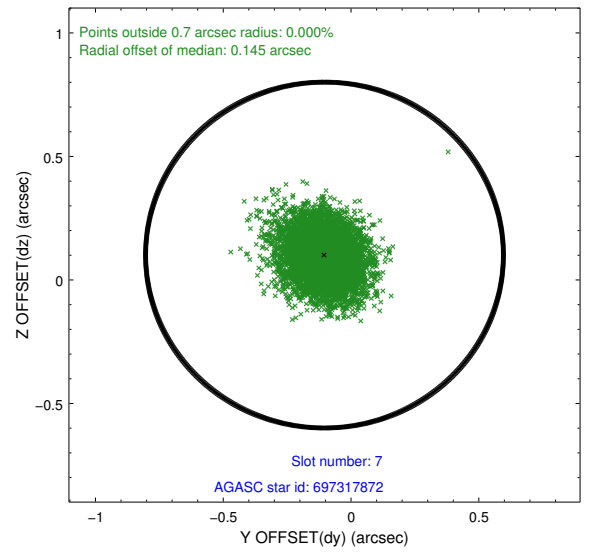
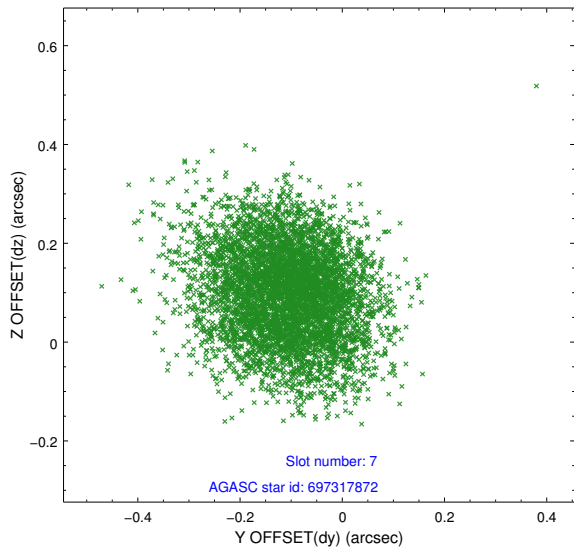
2.4.3 Slot 5



2.4.4 Slot 6

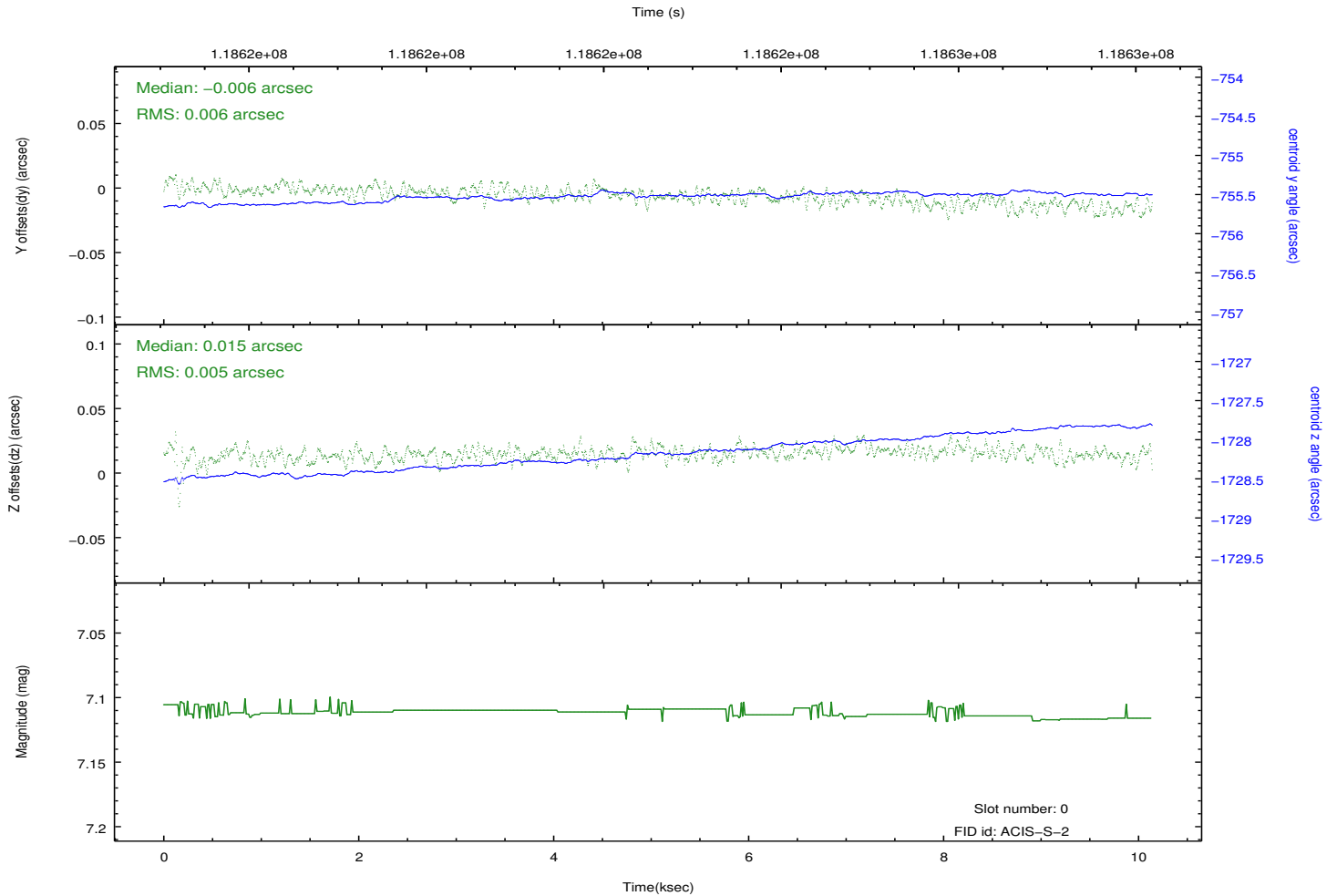
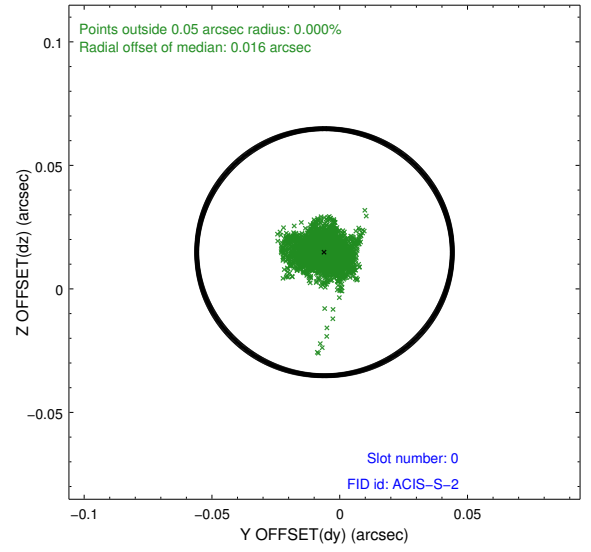
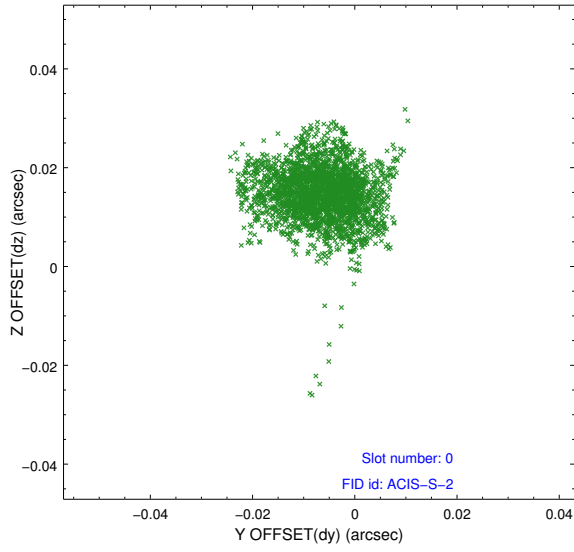


2.4.5 Slot 7

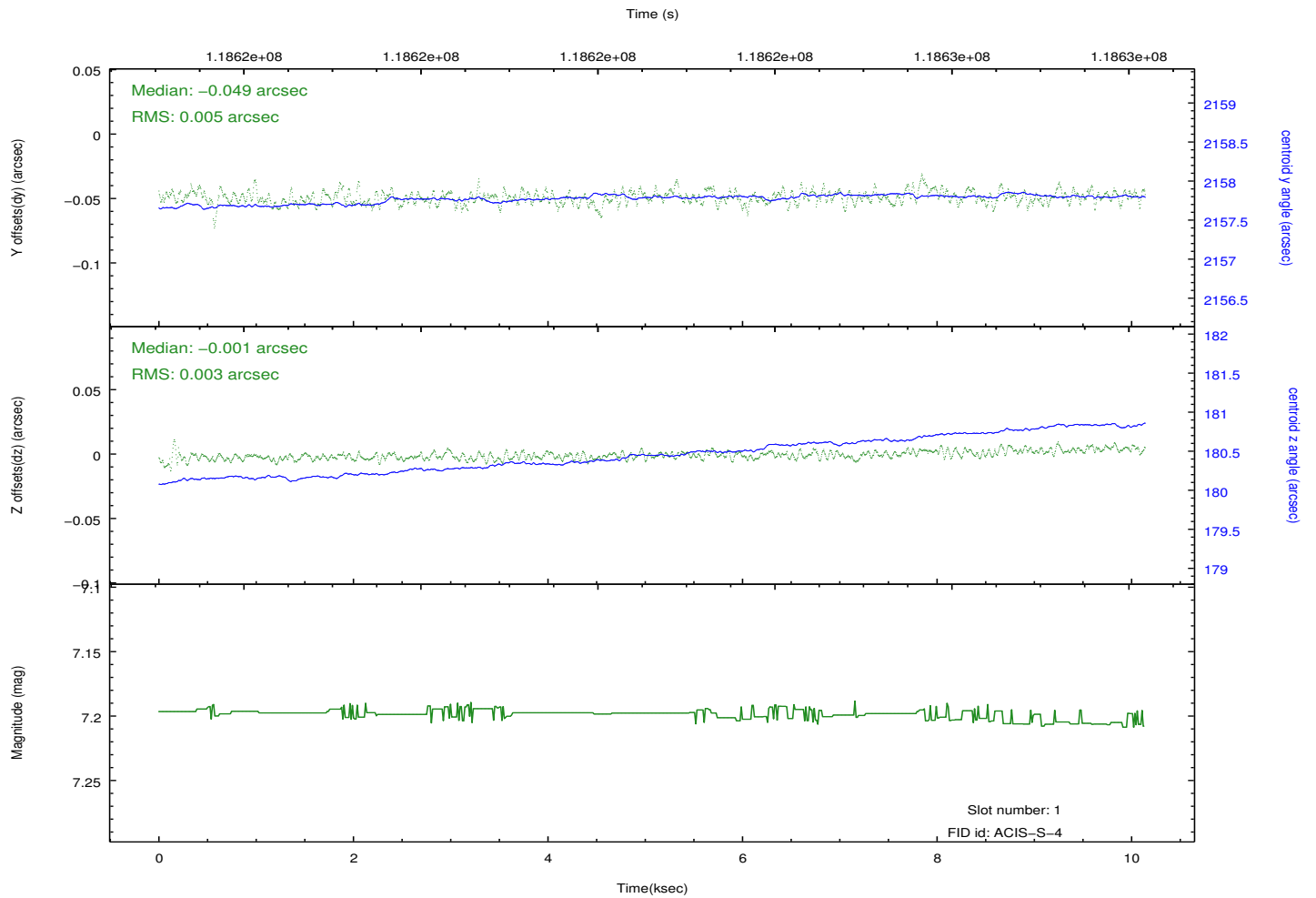
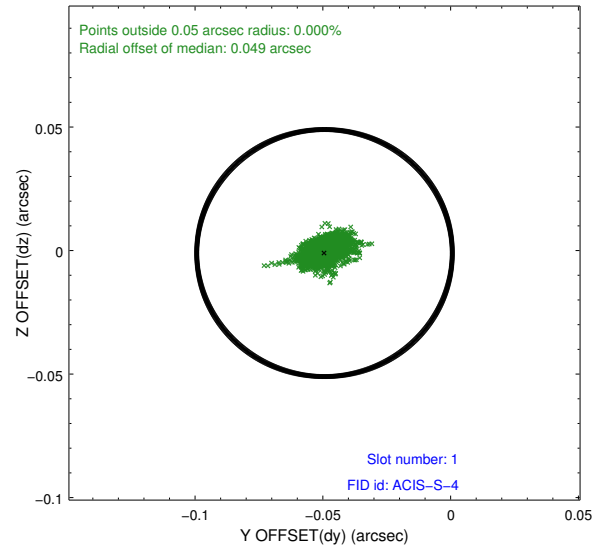
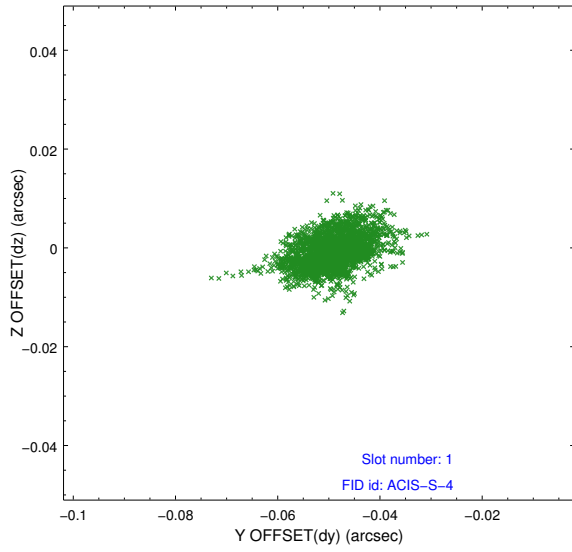


2.5 FID Slots

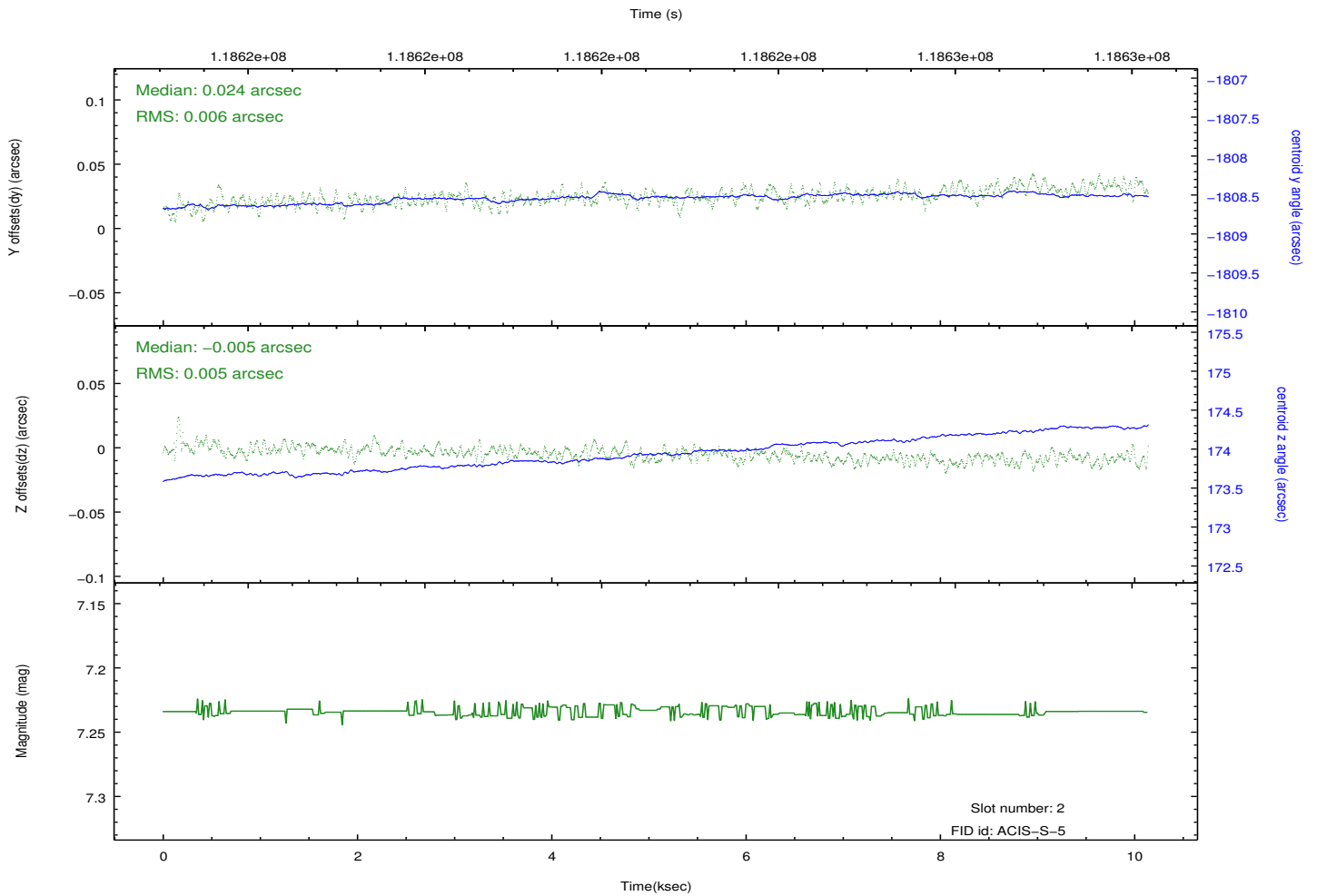
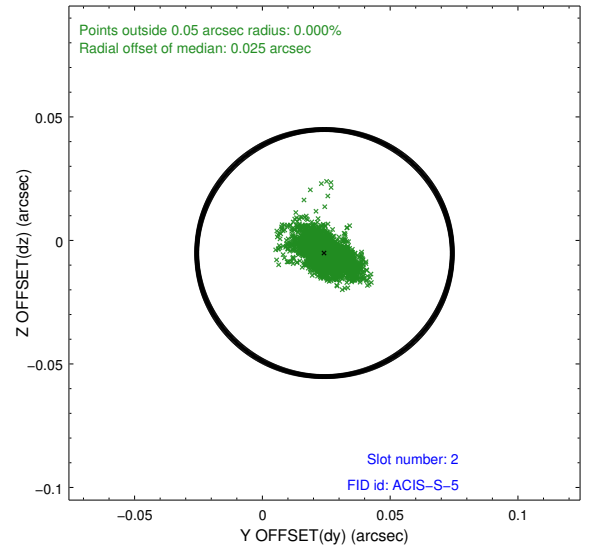
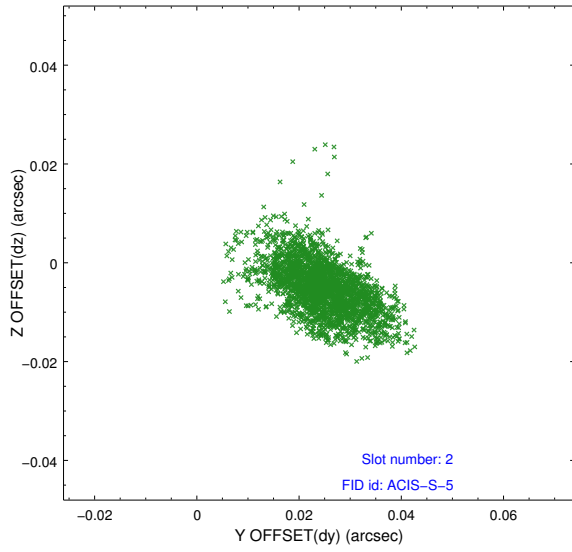
2.5.1 Slot 0



2.5.2 Slot 1



2.5.3 Slot 2



A Summary

A.1 Status

V&V Scientist	Jen Lauer
V&V Date (YYYY-MM-DD)	2012.09.27
V&V Edition	1
V&V Disposition and Status	OK
V&V Charge Time	10.127

A.2 Comments