

# V&V Reference Report

## L2 ASCDS Version : 8.4.5

Observation 3451 - L2 Version 5  
Chandra X-Ray Center

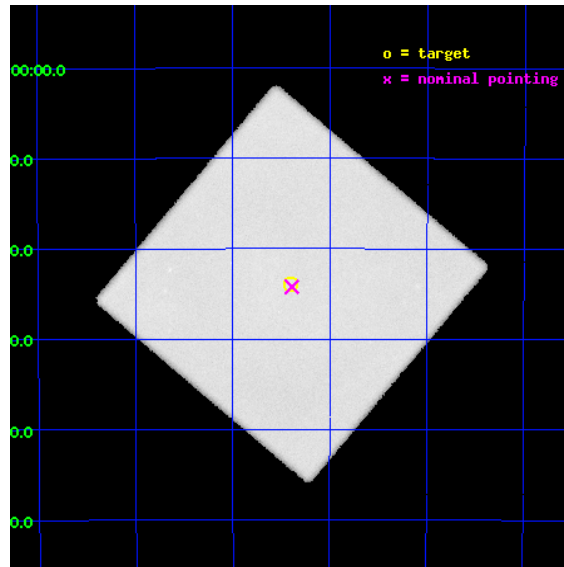
L2 Processing Date : Oct 5 2012

## Contents

<b>1 Front</b>	<b>2</b>
<b>2 OBI</b>	<b>3</b>
2.1 OBI . . . . .	3
2.1.1 Images . . . . .	3
2.1.2 Parameters . . . . .	4
2.1.3 Events . . . . .	4
2.2 Compared Parameters . . . . .	5
2.3 Aspect . . . . .	6
2.4 Star Slots . . . . .	9
2.4.1 Slot 3 . . . . .	9
2.4.2 Slot 4 . . . . .	10
2.4.3 Slot 5 . . . . .	11
2.4.4 Slot 6 . . . . .	12
2.4.5 Slot 7 . . . . .	13
2.5 FID Slots . . . . .	14
2.5.1 Slot 0 . . . . .	14
2.5.2 Slot 1 . . . . .	15
2.5.3 Slot 2 . . . . .	16
<b>A Summary</b>	<b>17</b>
A.1 Status . . . . .	17
A.2 Comments . . . . .	17

# 1 Front

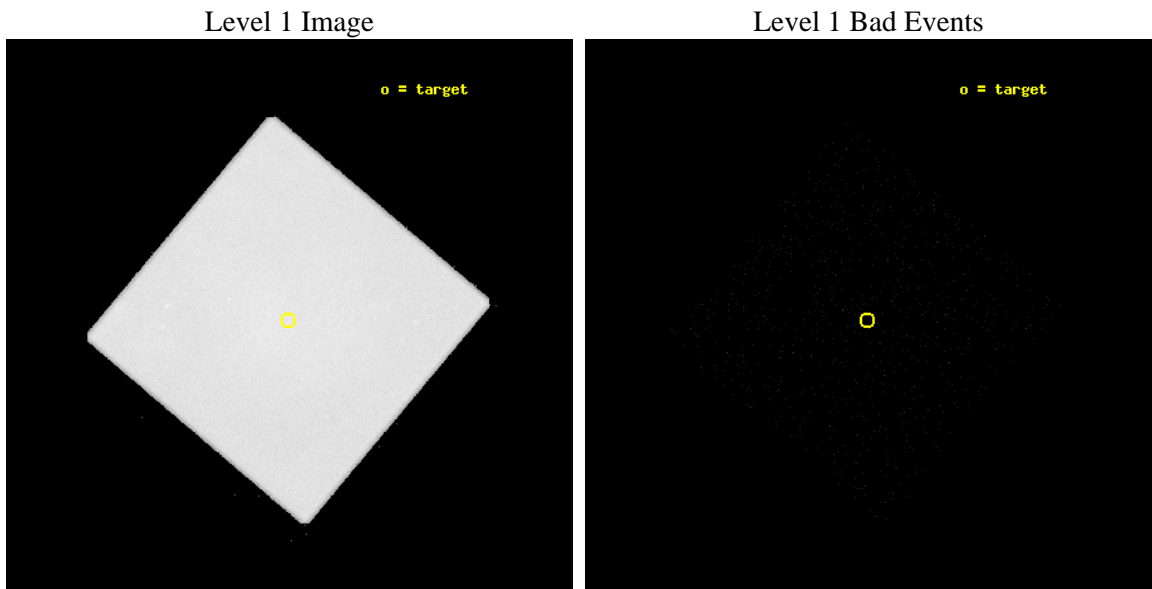
seq_num	590271	Sequence number
obs_id	3451	Observation id
title	A MEASUREMENT OF THE LOW ENERGY QE MAP OF THE HRC-I	Proposal title
observer	Dr. CXC Calibration	Principal investigator
object	VELA REMNANT	Source name
ra_targ	129.1	Observer's specified target RA [deg]
dec_targ	-43.4	Observer's specified target Dec [deg]
ra_nom	129.09730695391	Nominal RA [deg]
dec_nom	-43.403729848486	Nominal Dec [deg]
roll_nom	265.15525771764	Nominal Roll [deg]
revision	5	Processing version of data
ontime	37369.707771808	[s]
livetime	37039.879472861	Ontime multiplied by DTCOR
l2events	2647530	Number of level 2 events



## 2 OBI

### 2.1 OBI

#### 2.1.1 Images



### 2.1.2 Parameters

obi_num	1	Obi number	sched_exp_time	37500.000000	[s] Scheduled observation exposure time
ascdsver	8.4.5	Processing system revision	ontime	37369.707771808	[s]
caldbver	4.5.2	&#160	l1events	3450788	Number of level 1 events
date	2012-10-05T17:31:29	Date and time of file creation			
revision	5	Processing version of data			

### 2.1.3 Events

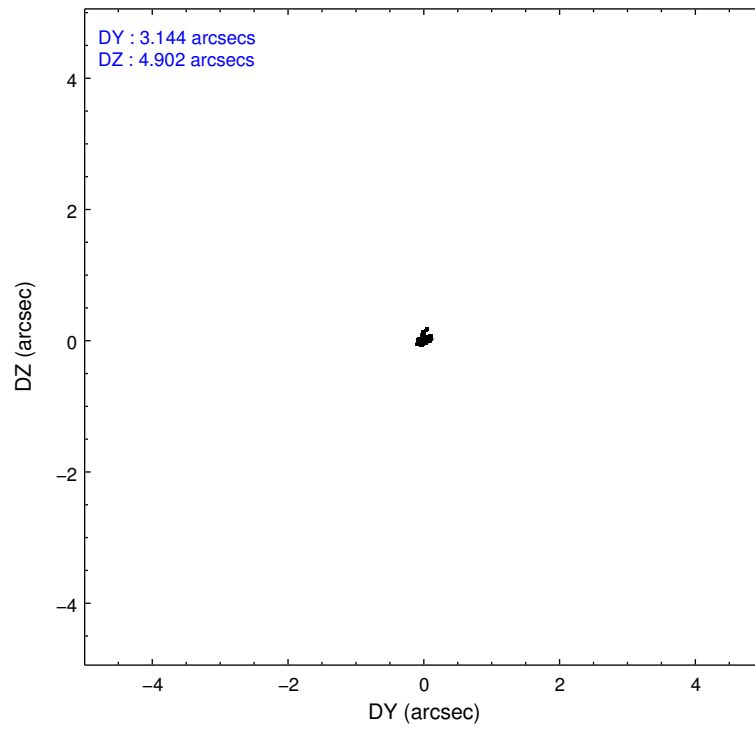
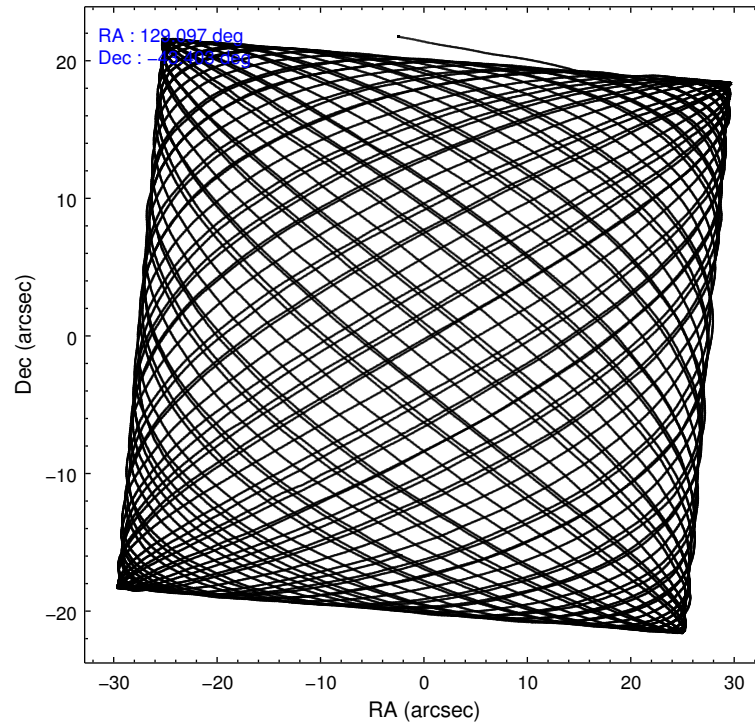
#### Level 1 Events

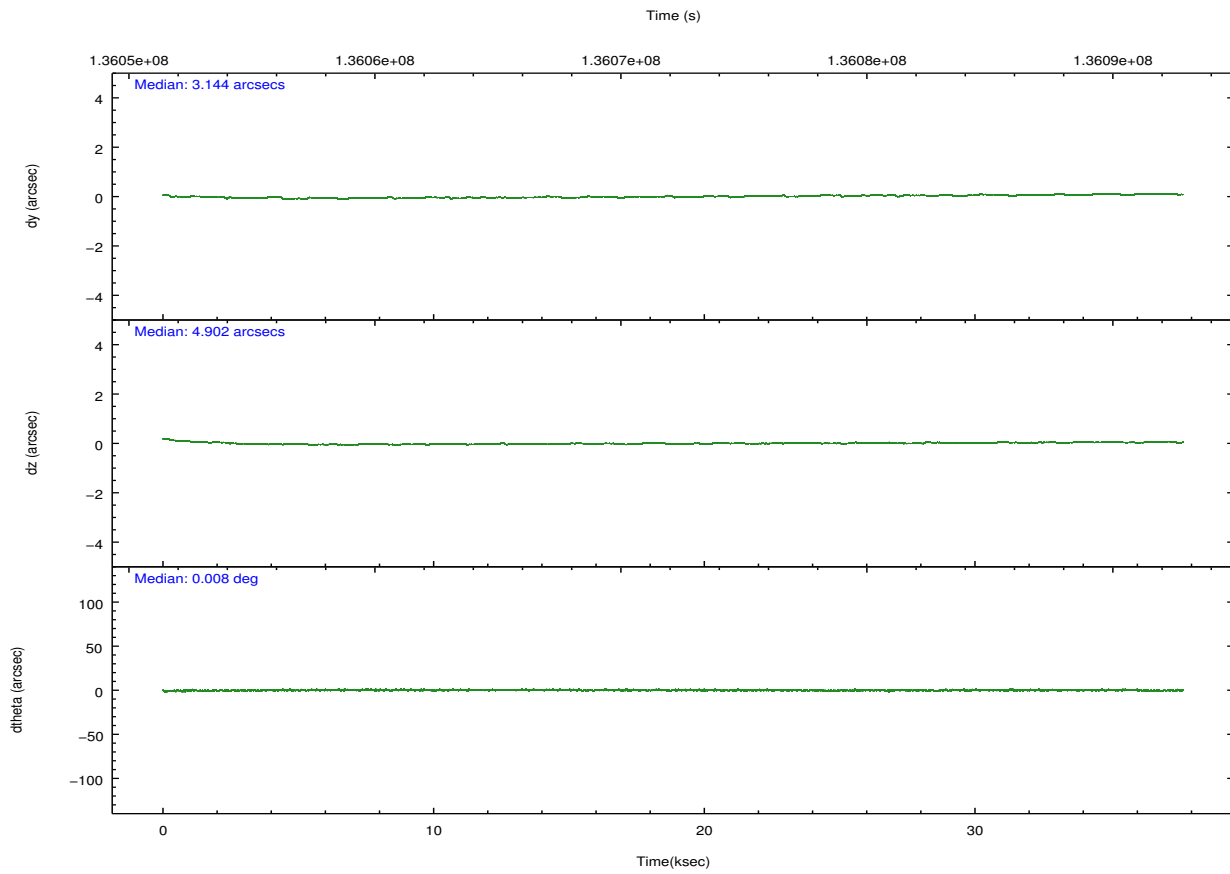
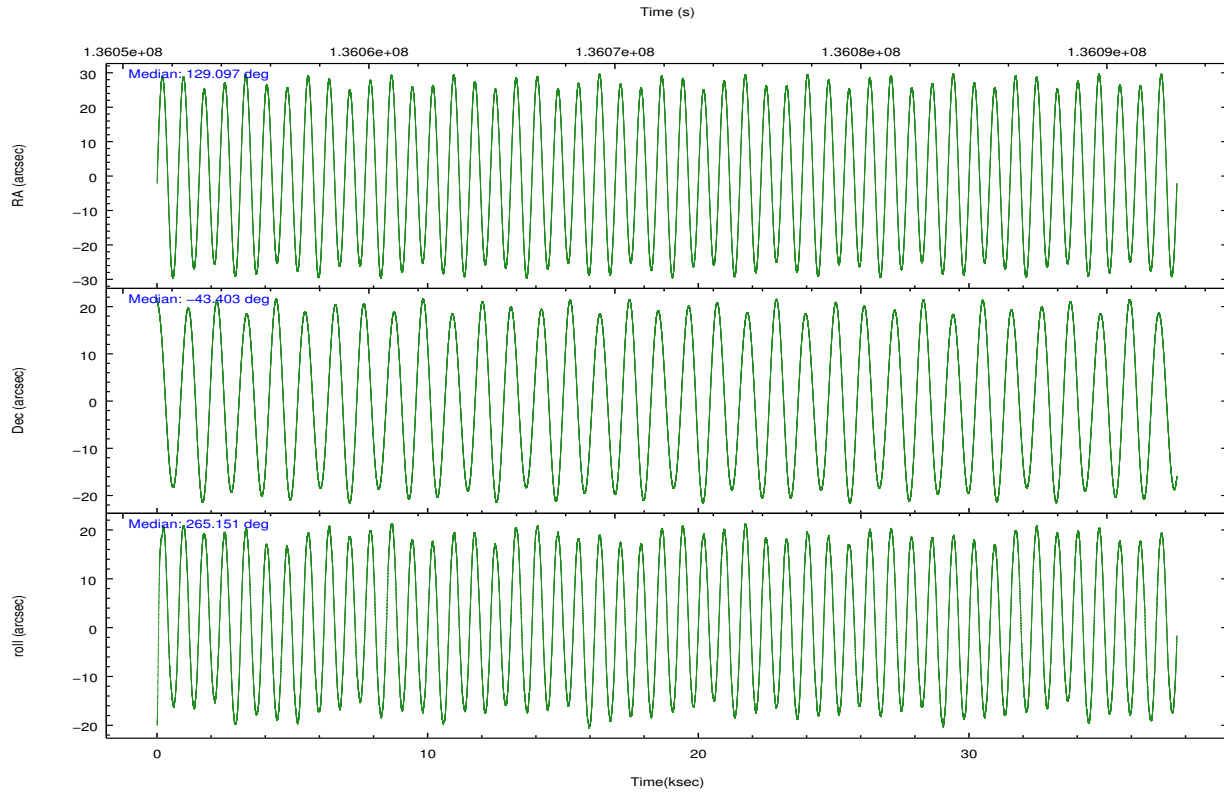
	<b>segment 0</b>
level 1 events	3450788
rejected events	9323
rejected %	0%

## 2.2 Compared Parameters

Parameter	Planned	Actual	Parameter	Planned	Actual
Instrument	HRC	HRC	Obspar format version number	7	7
Detector	HRC-I	HRC-I	Obspar file type	PREDICTED	ACTUAL
Grating	NONE	NONE	Obspar update status	NONE	UPDATED
Data mode	OBSERVING	OBSERVING			
Observation mode	POINTING	POINTING			
[deg] Pointing RA	129.080714	129.0973069539077			
[deg] Pointing Dec	-43.379438	-43.4037298484858			
[deg] Pointing Roll	265.239354	265.1552577176358			
[s] Window start time (MET)	134006464.184000	134006464.184000			
[s] Window stop time (MET)	136512064.184000	136512064.184000			
[mm] SIM focus pos	-1.040293	-1.038866356238299			
[mm] SIM defocus	0	0.001426264420575141			
[mm] SIM translation stage pos	126.985494	126.9804656746847			
[mm] SIM translation stage offset	0	0.005023216916882234			
[s] Observation start time (MET)	136053464.184000	136052740.30891			
Observation start date	2002-04-24T16:36:40	2002-04-24T16:25:40			
[s] Observation end time (MET)	136090964.184000	136091834.8355			
Observation end date	2002-04-25T03:01:40	2002-04-25T03:17:14			

## 2.3 Aspect





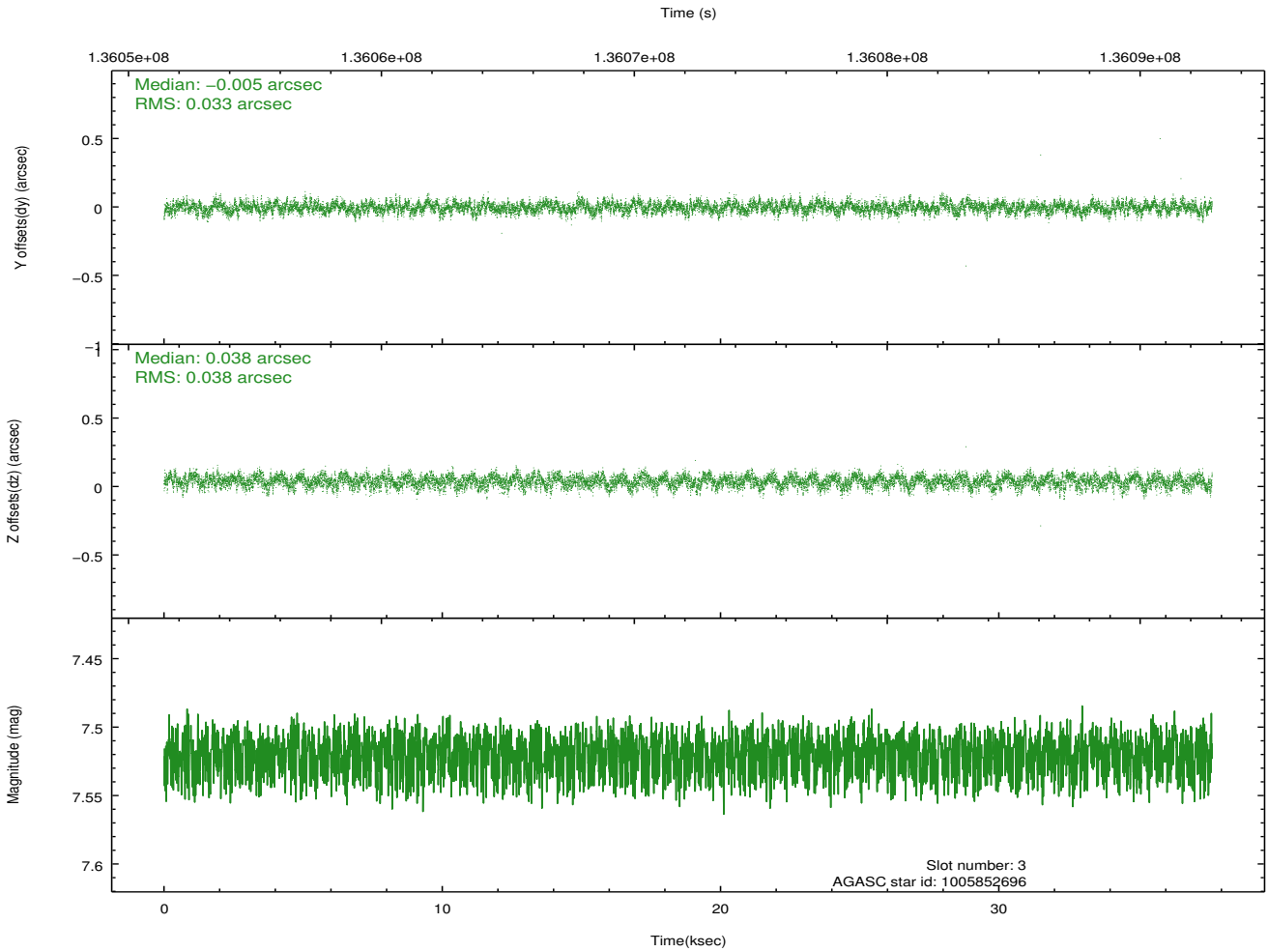
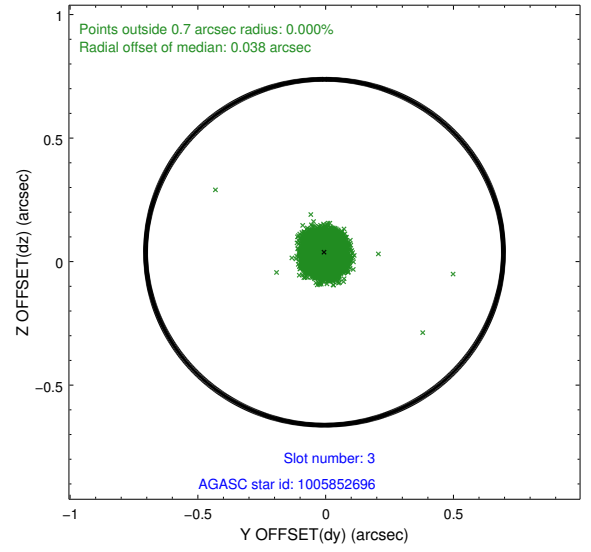
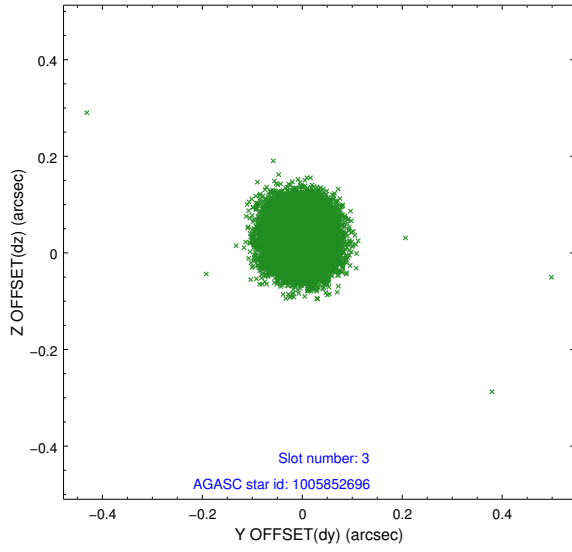
### Slot Statistics

slot	status	id	mag	n_pts	med_dy	med_dz	dr1	dr2	ra	dec	mean_y	mean_z
0	FID	HRC-I-1	6.97	9190	0.006	0.055	0.007	0.012	0.000000	0.000000	-758.60	-1292.60
1	FID	HRC-I-2	7.01	9190	0.074	-0.049	0.006	0.010	0.000000	0.000000	854.02	-1294.38
2	FID	HRC-I-3	7.06	9189	0.039	-0.095	0.006	0.011	0.000000	0.000000	-1187.00	1011.67
3	GUIDE	1005852696	7.52	18367	-0.005	0.038	0.054	0.086	129.268544	-43.812134	1513.24	615.90
4	GUIDE	1005872816	7.99	18379	0.231	-0.076	0.102	0.167	128.079123	-43.931495	2213.15	-2421.34
5	GUIDE	1005849584	8.87	18348	0.019	0.008	0.067	0.110	129.259023	-43.780363	1401.35	581.81
6	GUIDE	1005337992	8.48	18372	-0.151	-0.016	0.075	0.124	128.344661	-42.851803	-1722.27	-2092.85
7	GUIDE	1005333536	9.46	18371	-0.098	0.052	0.090	0.148	128.886420	-42.801856	-2028.24	-684.11

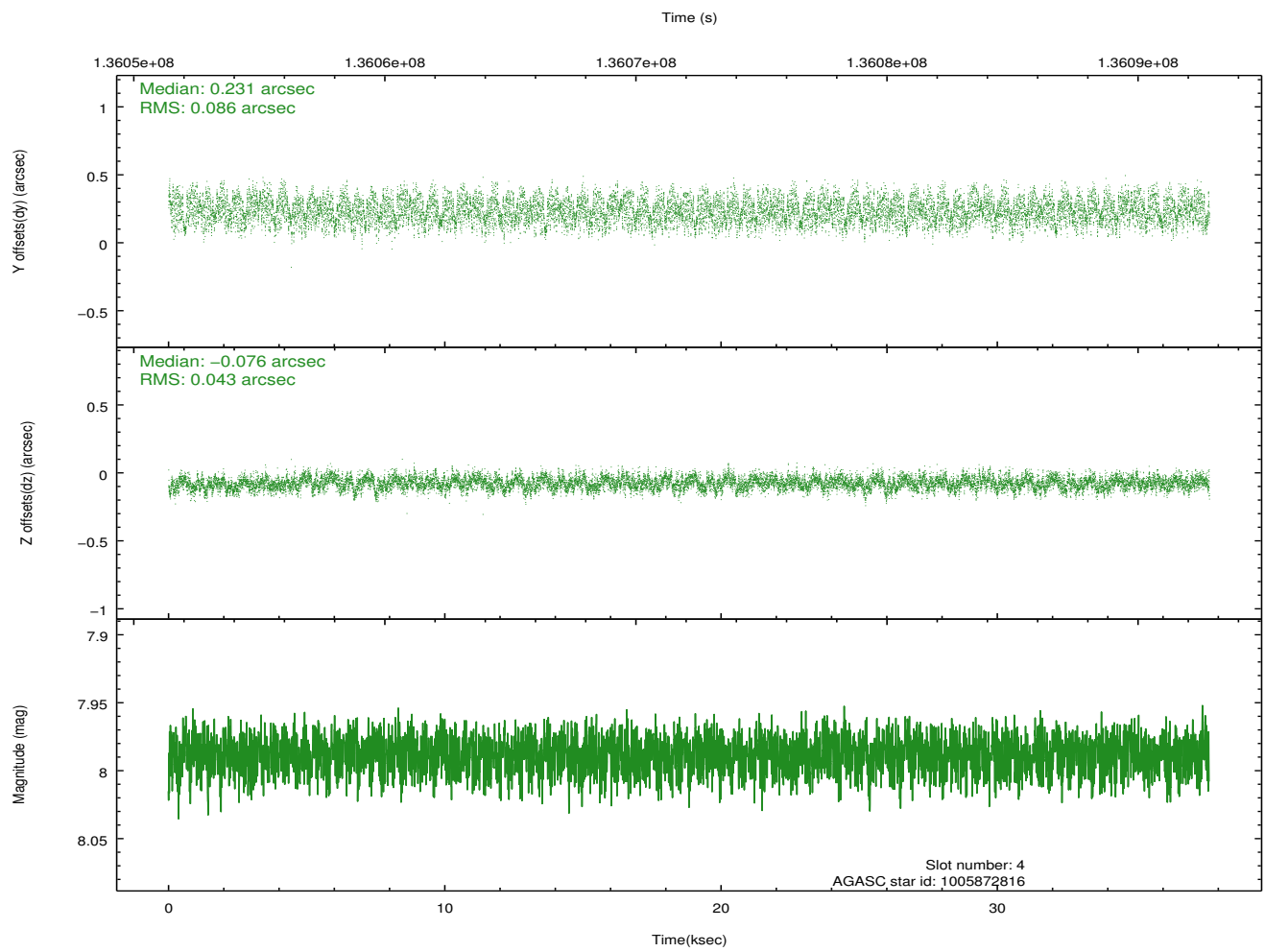
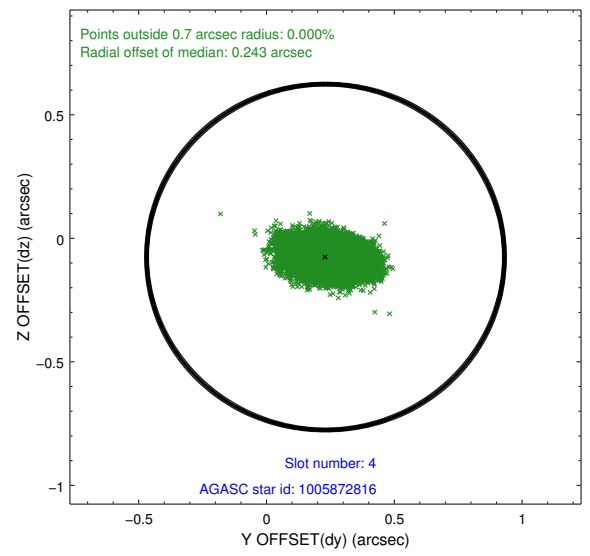
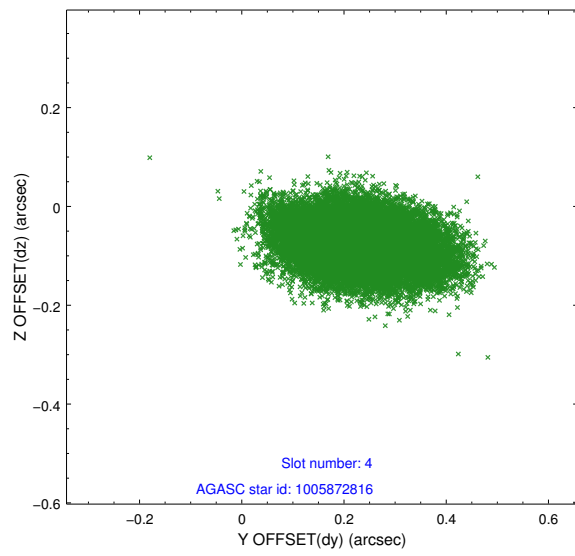
∞

## 2.4 Star Slots

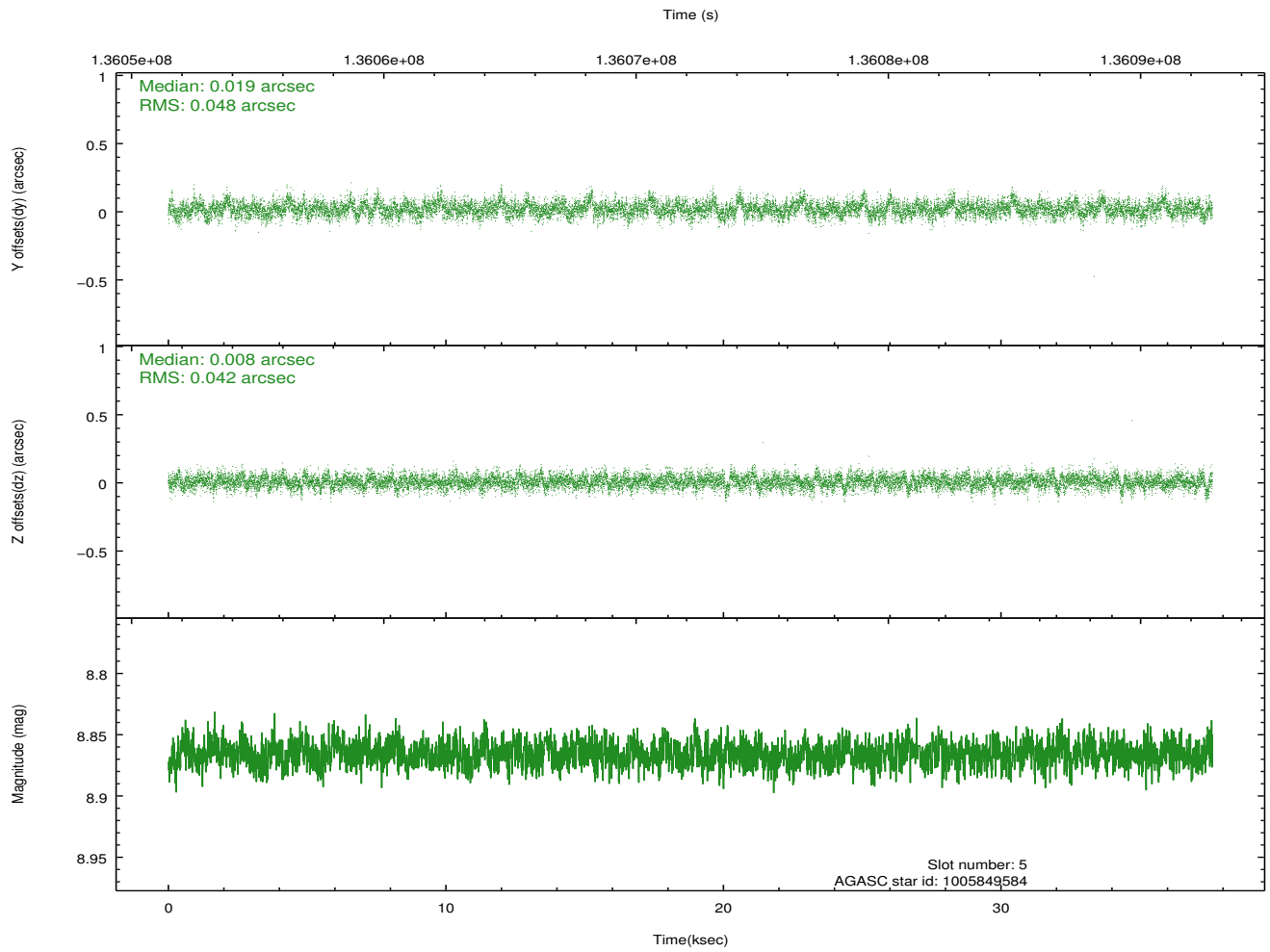
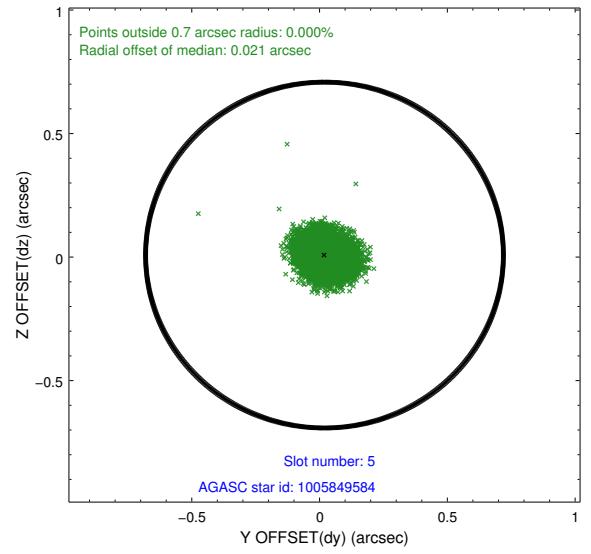
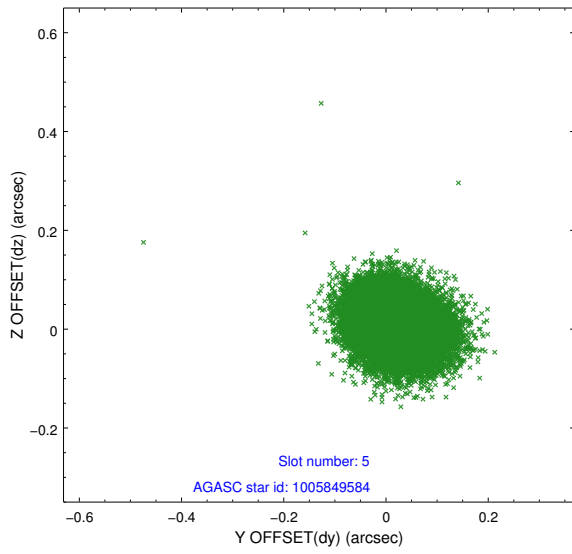
### 2.4.1 Slot 3



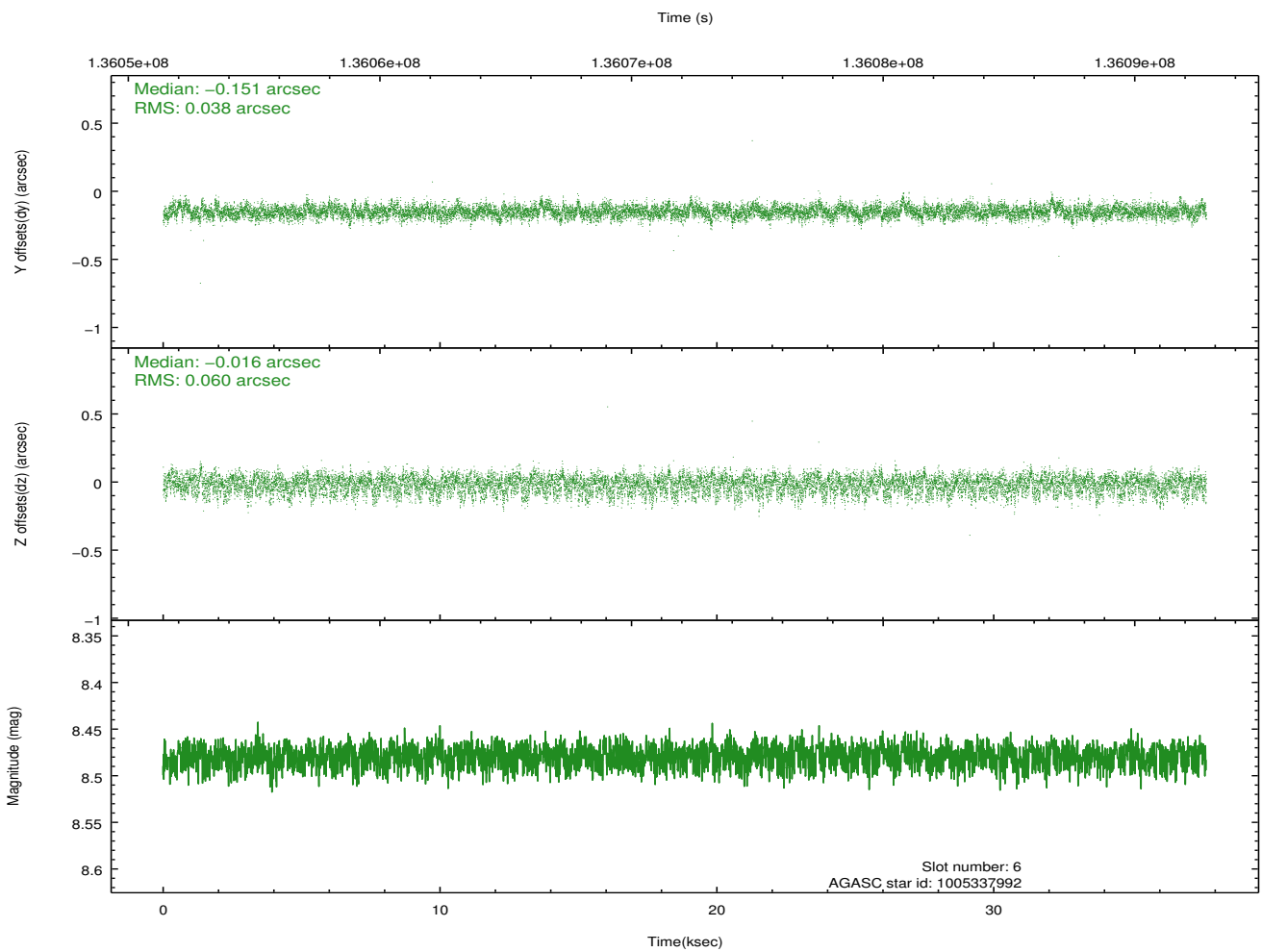
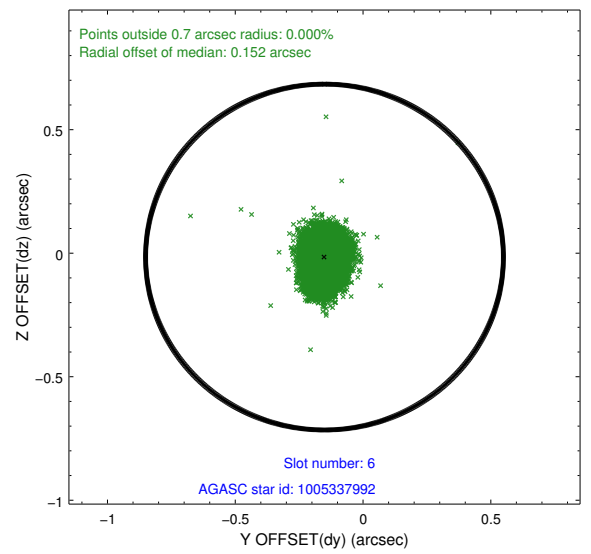
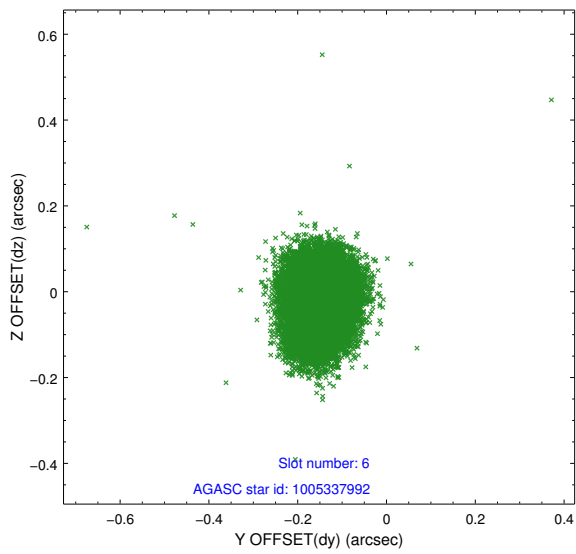
## 2.4.2 Slot 4



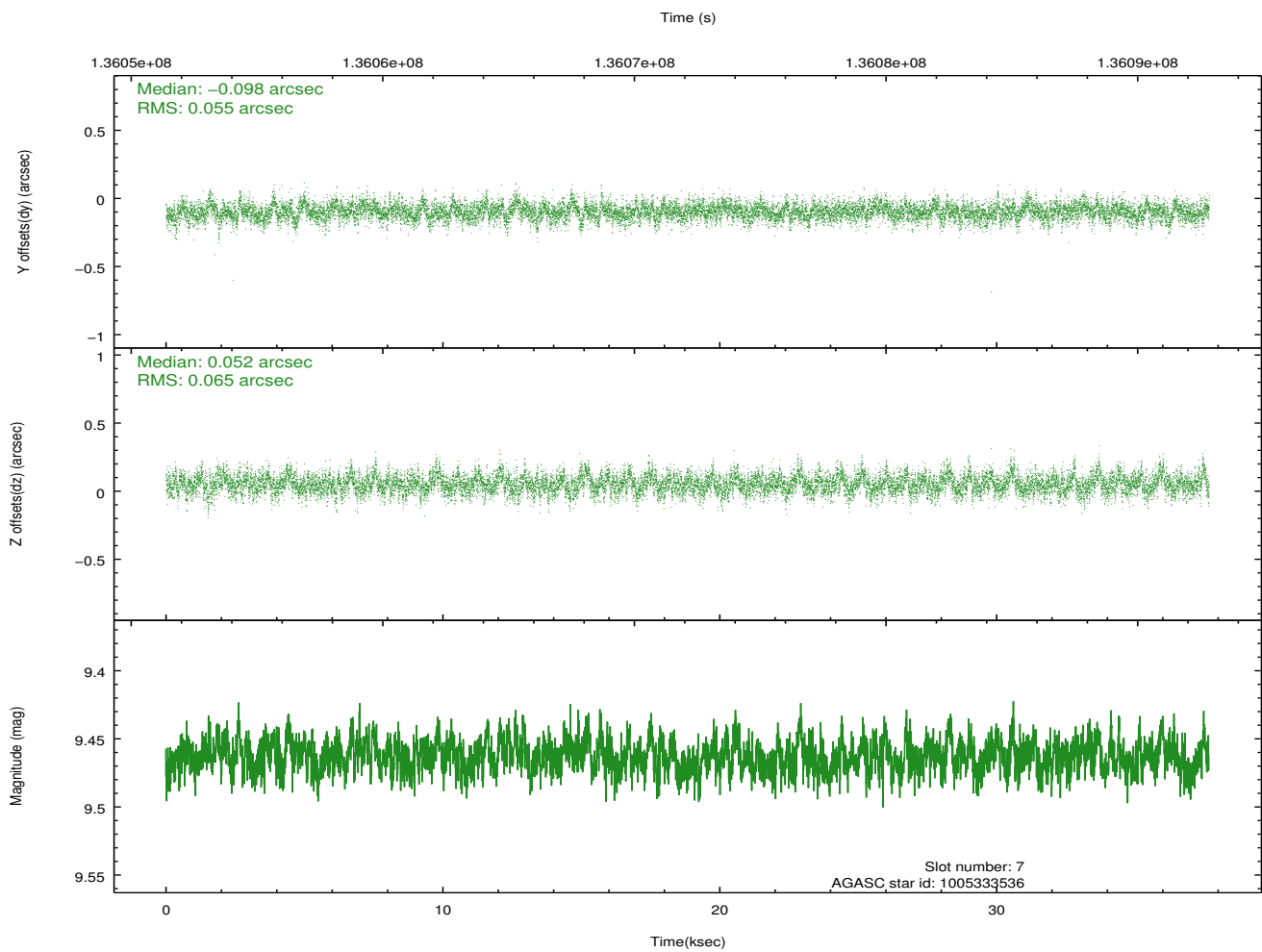
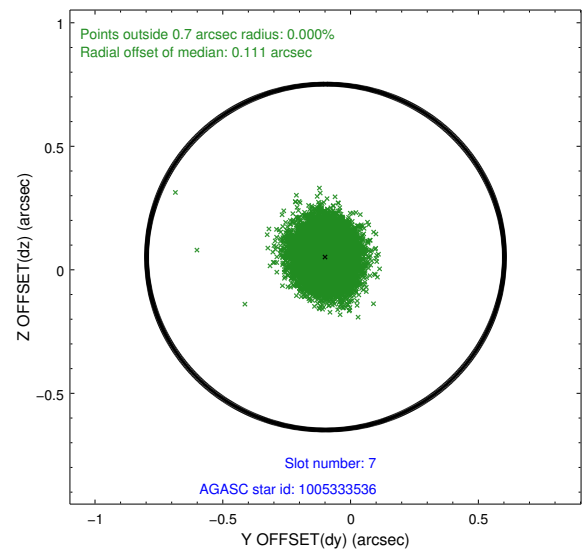
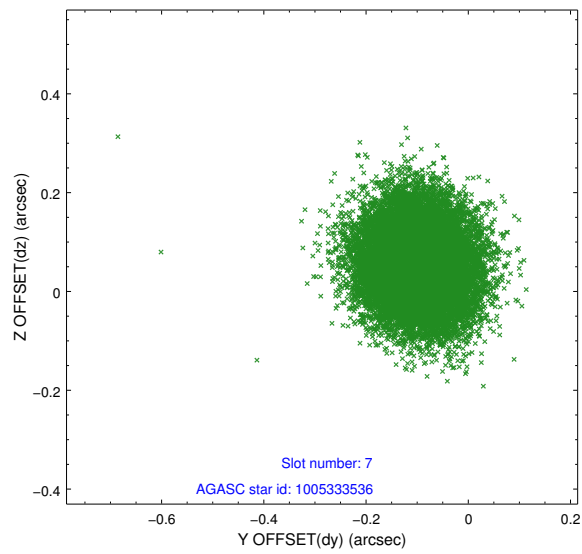
### 2.4.3 Slot 5



## 2.4.4 Slot 6

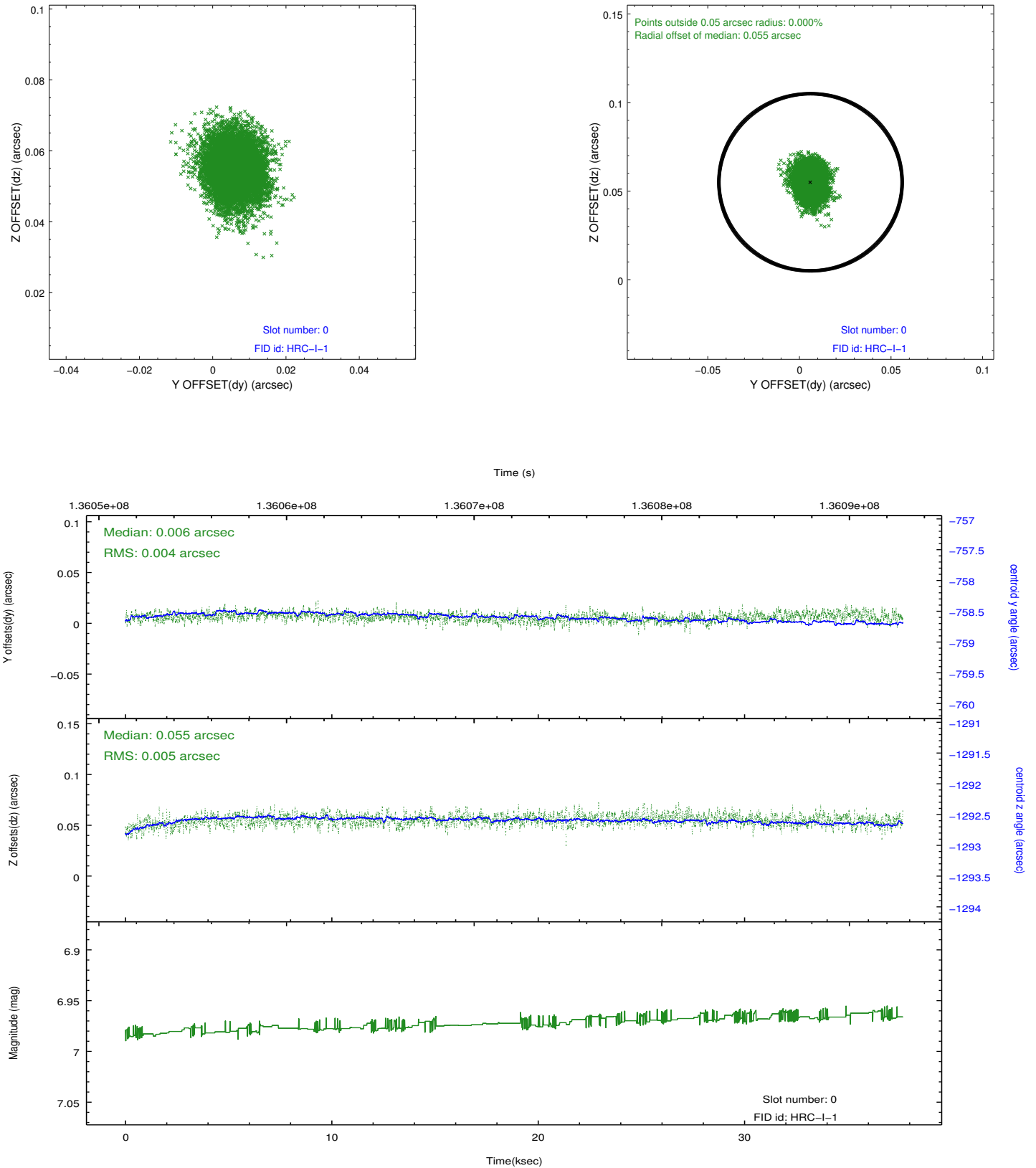


## 2.4.5 Slot 7

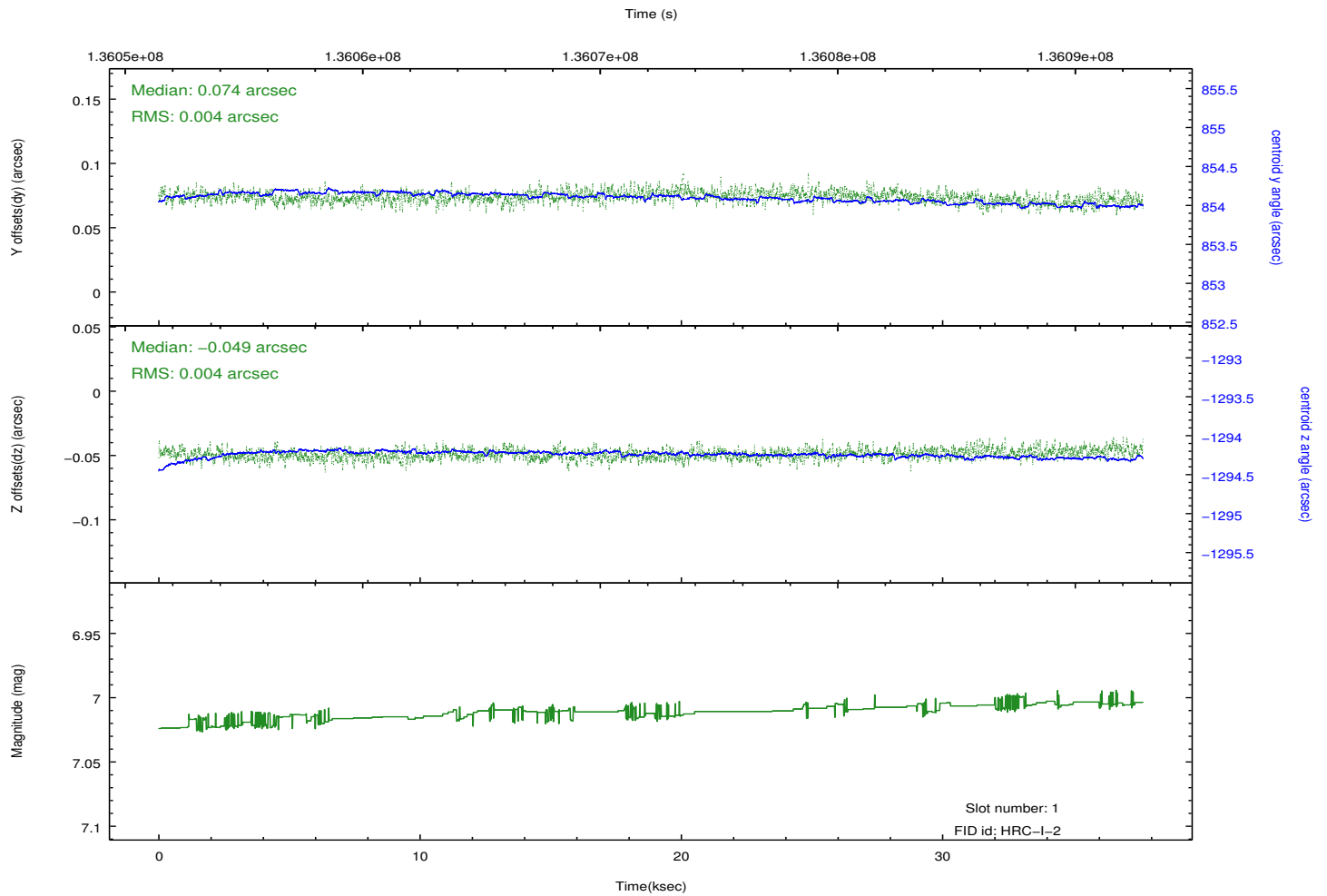
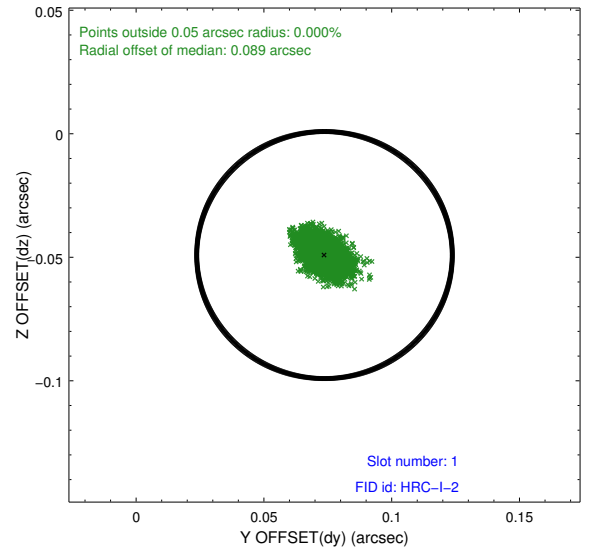
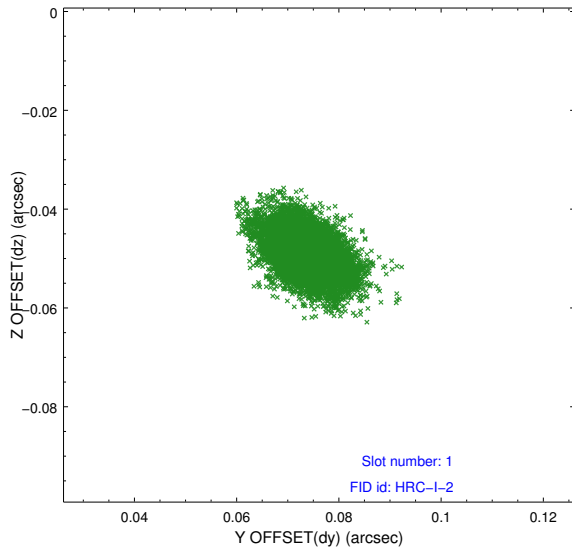


## 2.5 FID Slots

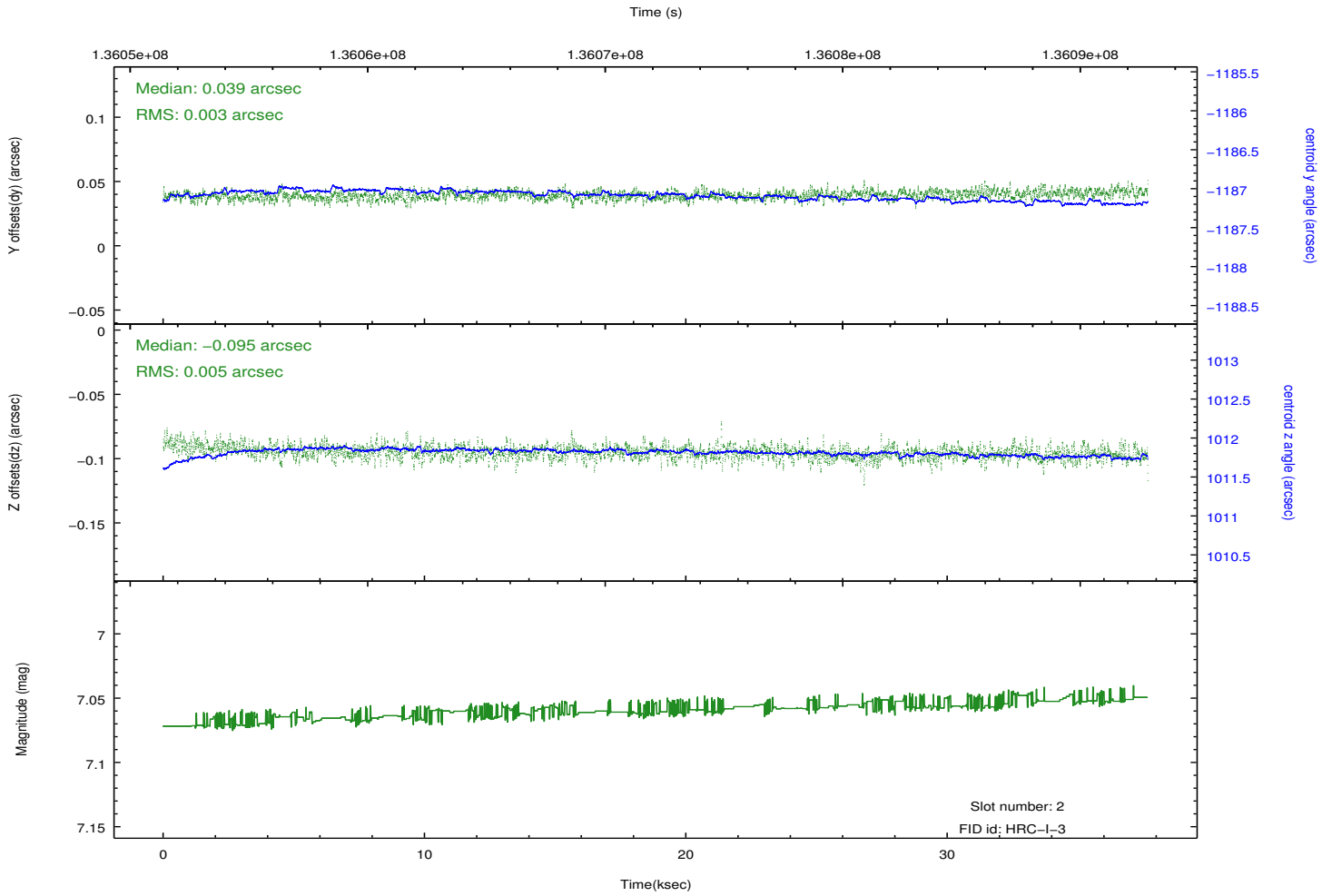
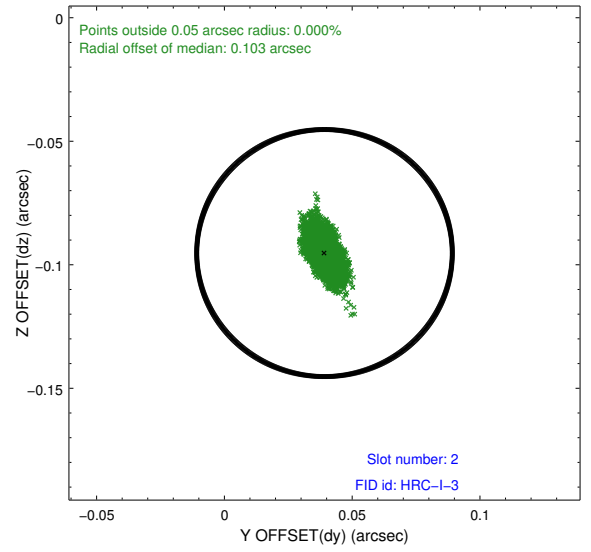
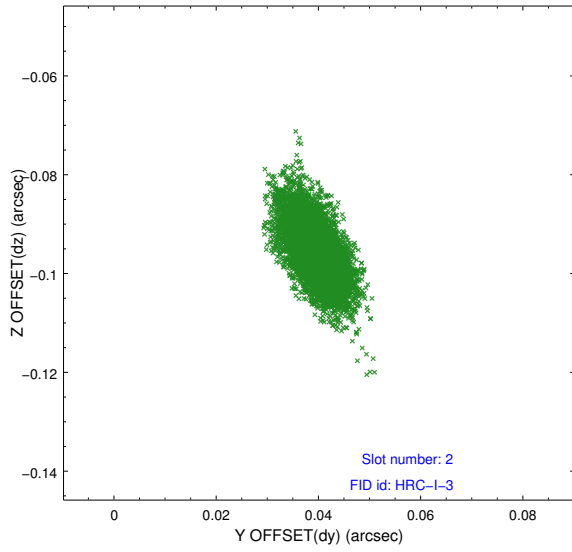
### 2.5.1 Slot 0



## 2.5.2 Slot 1



### 2.5.3 Slot 2



# A Summary

## A.1 Status

V&V Scientist	Joy Nichols
V&V Date (YYYY-MM-DD)	2012.10.24
V&V Edition	1
V&V Disposition and Status	OK
V&V Charge Time	37.369

## A.2 Comments