

V&V Reference Report

L2 ASCDS Version : 8.4.5

Observation 3511 - L2 Version 3
Chandra X-Ray Center

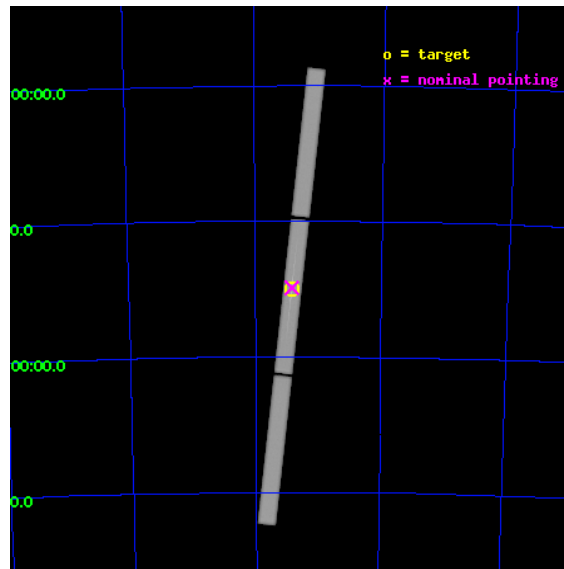
L2 Processing Date : Nov 5 2012

Contents

| | | |
|----------|-------------------------------|-----------|
| 1 | Front | 2 |
| 2 | OBI | 3 |
| 2.1 | OBI | 3 |
| 2.1.1 | Images | 3 |
| 2.1.2 | Parameters | 4 |
| 2.1.3 | Events | 4 |
| 2.2 | Compared Parameters | 5 |
| 2.3 | Aspect | 6 |
| 2.4 | Star Slots | 9 |
| 2.4.1 | Slot 3 | 9 |
| 2.4.2 | Slot 4 | 10 |
| 2.4.3 | Slot 5 | 11 |
| 2.4.4 | Slot 6 | 12 |
| 2.4.5 | Slot 7 | 13 |
| 2.5 | FID Slots | 14 |
| 2.5.1 | Slot 0 | 14 |
| 2.5.2 | Slot 1 | 15 |
| 2.5.3 | Slot 2 | 16 |
| 3 | Gratings | 17 |
| 3.1 | LETG Arm | 17 |
| A | Summary | 19 |
| A.1 | Status | 19 |
| A.2 | Comments | 19 |

1 Front

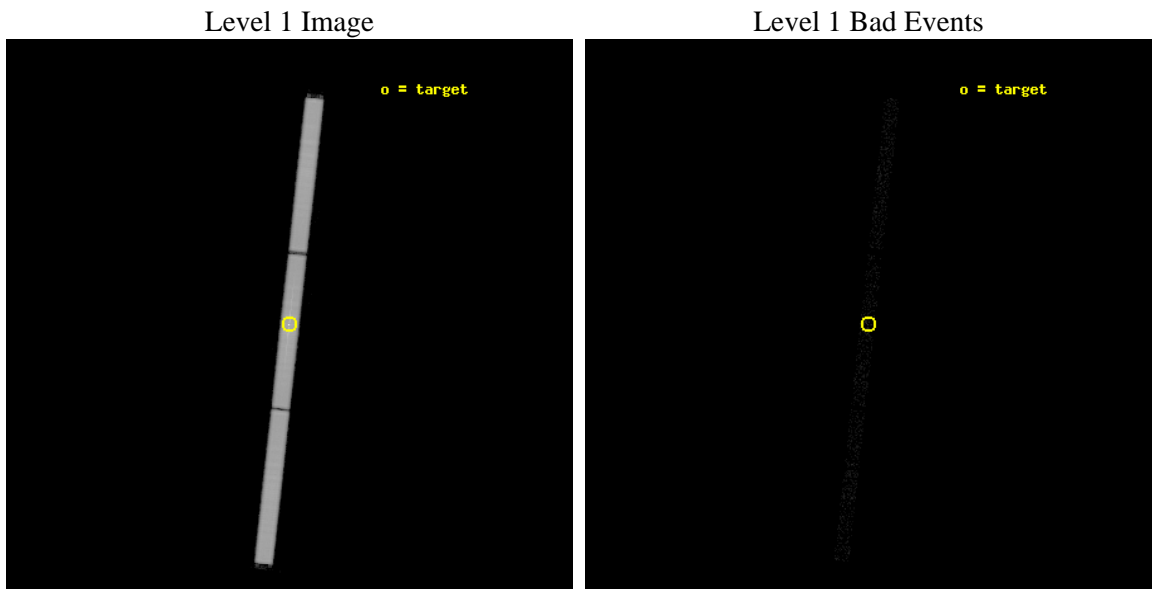
| | | |
|-----------|---|---------------------------------------|
| seq_num | 400264 | Sequence number |
| obs_id | 3511 | Observation id |
| title | SOFT X-RAY EMISSION FROM X-RAY BINARIES | Proposal title |
| observer | Prof Mariano Mendez | Principal investigator |
| object | EXO 0748-676 | Source name |
| ra_targ | 117.13875 | Observer's specified target RA [deg] |
| dec_targ | -67.75 | Observer's specified target Dec [deg] |
| ra_nom | 117.13775842944 | Nominal RA [deg] |
| dec_nom | -67.745342478848 | Nominal Dec [deg] |
| roll_nom | 96.260488040904 | Nominal Roll [deg] |
| revision | 3 | Processing version of data |
| ontime | 39982.432969421 | [s] |
| liveltime | 39744.535661498 | Ontime multiplied by DTCOR |
| l2events | 1896175 | Number of level 2 events |



2 OBI

2.1 OBI

2.1.1 Images



2.1.2 Parameters

| | | | | | |
|----------|---------------------|--------------------------------|----------------|-----------------|---|
| obi_num | 0 | Obi number | sched_exp_time | 40000.000000 | [s] Scheduled observation exposure time |
| ascdsver | 8.4.5 | Processing system revision | ontime | 39982.432969421 | [s] |
| caldbver | 4.5.2 | | l1events | 2623813 | Number of level 1 events |
| date | 2012-11-05T06:35:07 | Date and time of file creation | | | |
| revision | 3 | Processing version of data | | | |

2.1.3 Events

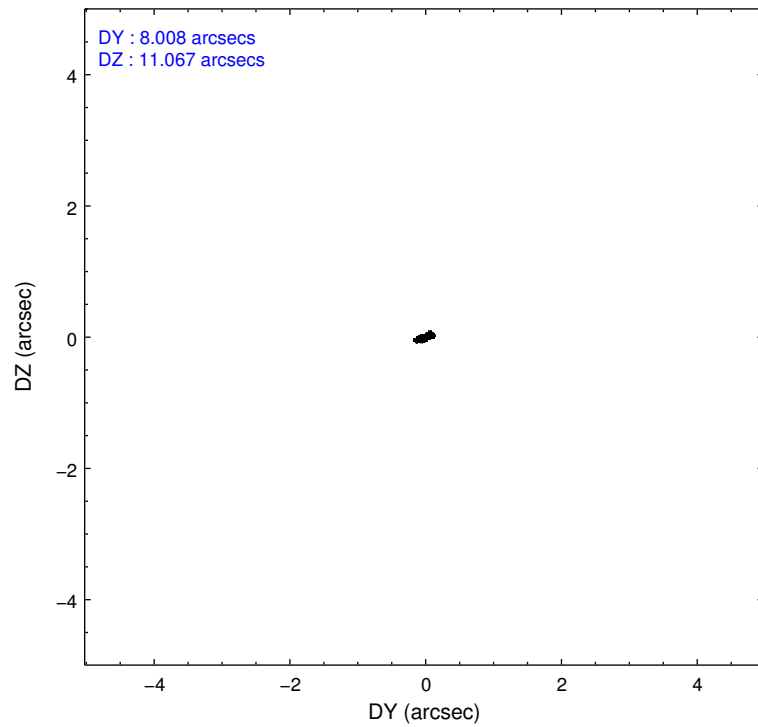
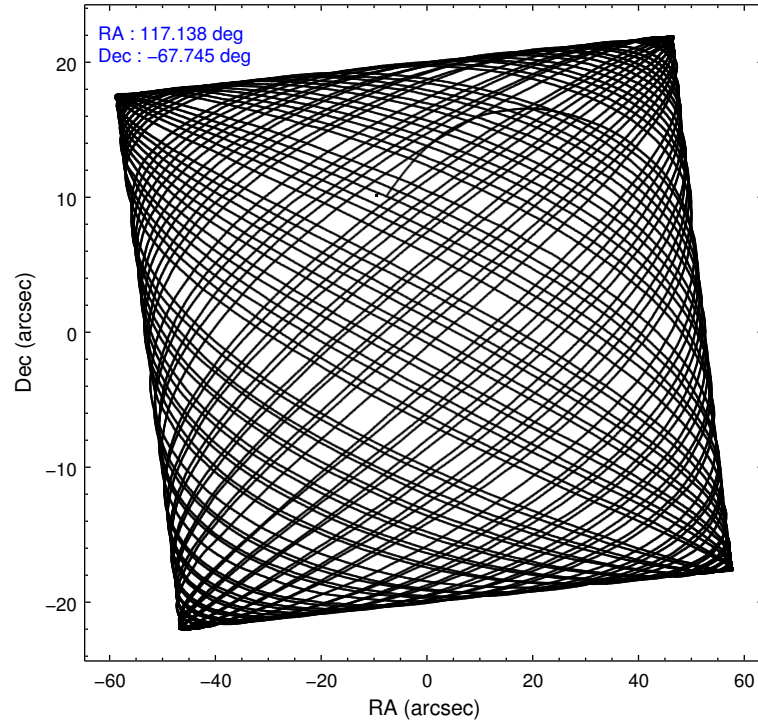
Level 1 Events

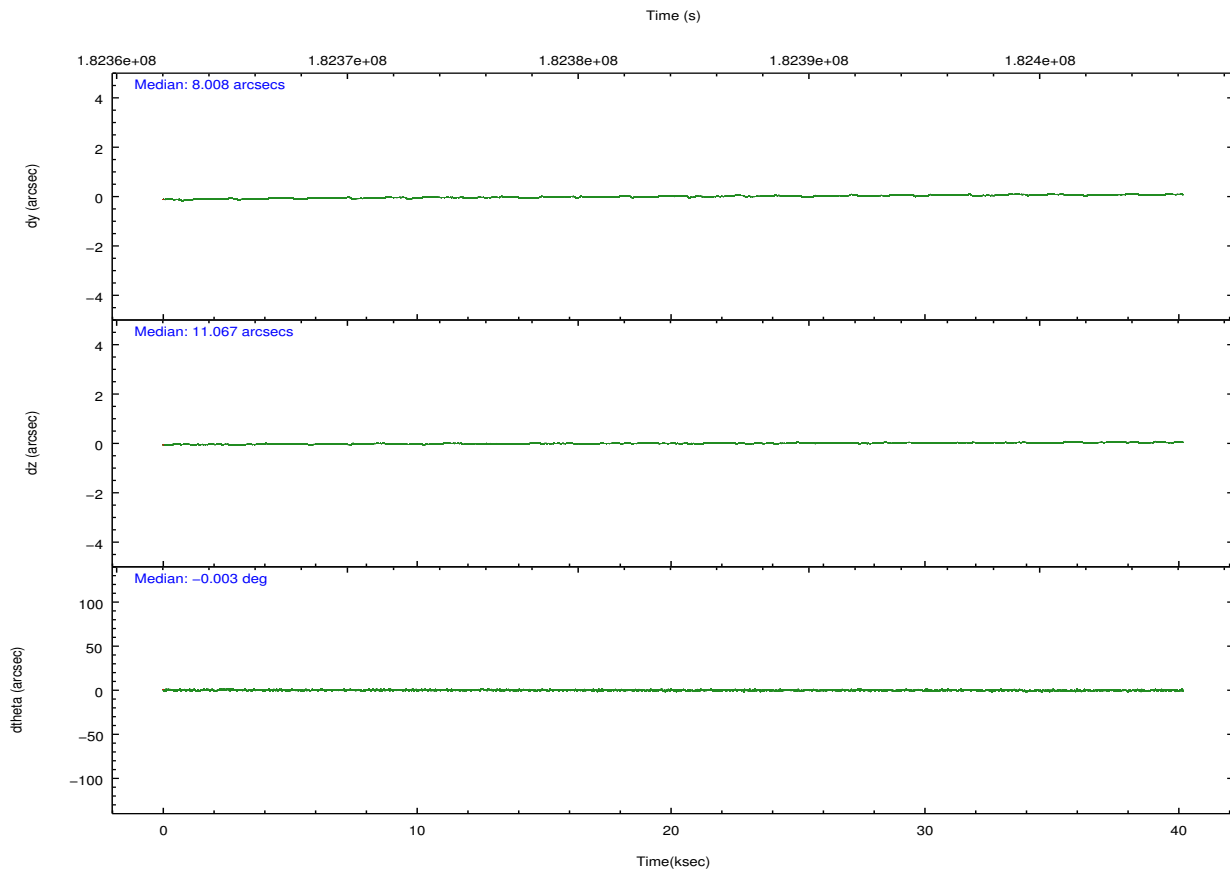
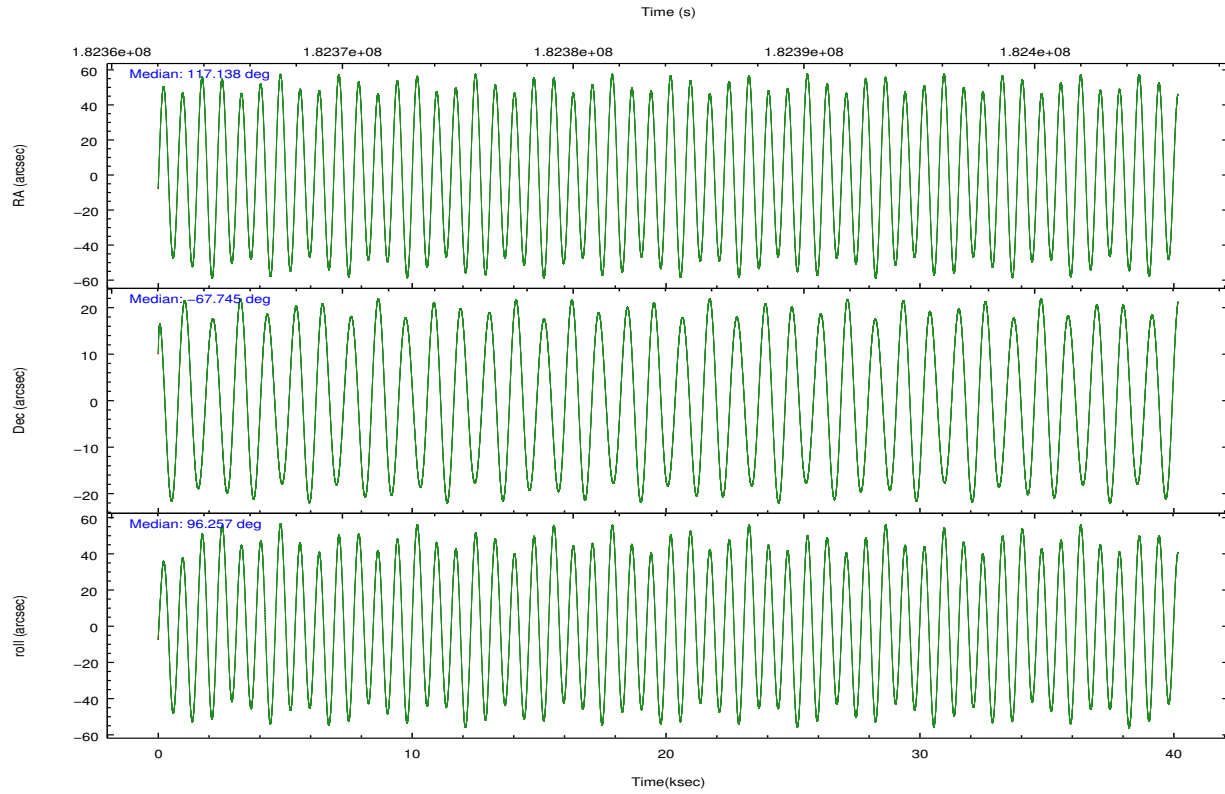
| | segment 1 | segment 2 | segment 3 |
|-----------------|----------------------|----------------------|----------------------|
| level 1 events | 870376 | 881097 | 872340 |
| rejected events | 1474 | 1486 | 1558 |
| rejected % | 0% | 0% | 0% |

2.2 Compared Parameters

| Parameter | Planned | Actual | Parameter | Planned | Actual |
|-----------------------------------|---------------------|----------------------|------------------------------|-----------|---------|
| Instrument | HRC | HRC | Obspar format version number | 7 | 7 |
| Detector | HRC-S | HRC-S | Obspar file type | PREDICTED | ACTUAL |
| Grating | LETG | LETG | Obspar update status | NONE | UPDATED |
| Data mode | OBSERVING | OBSERVING | | | |
| Observation mode | POINTING | POINTING | | | |
| [deg] Pointing RA | 117.185425 | 117.137758429442 | | | |
| [deg] Pointing Dec | -67.767517 | -67.7453424788478 | | | |
| [deg] Pointing Roll | 96.237268 | 96.26048804090412 | | | |
| [mm] SIM focus pos | -1.429586 | -1.428180813131781 | | | |
| [mm] SIM defocus | 0.1037507710433287 | 0.1051558262725154 | | | |
| [mm] SIM translation stage pos | 250.455976 | 250.466033080201 | | | |
| [mm] SIM translation stage offset | 0 | -0.01005468664627074 | | | |
| [s] Observation start time (MET) | 182364193.184000 | 182363100.68501 | | | |
| Observation start date | 2003-10-12T16:42:09 | 2003-10-12T16:25:00 | | | |
| [s] Observation end time (MET) | 182404193.184000 | 182404715.6868 | | | |
| Observation end date | 2003-10-13T03:48:49 | 2003-10-13T03:58:35 | | | |

2.3 Aspect



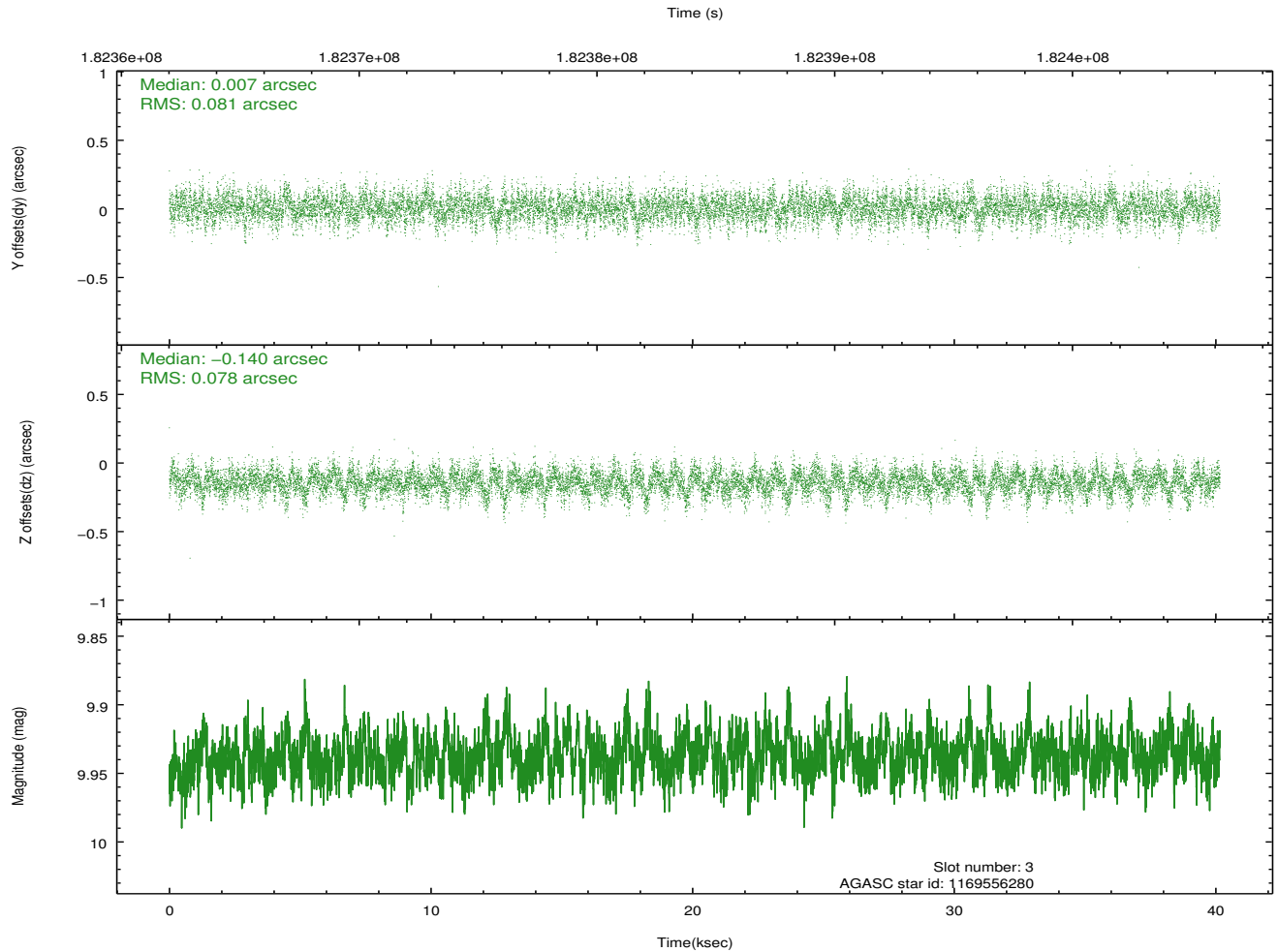
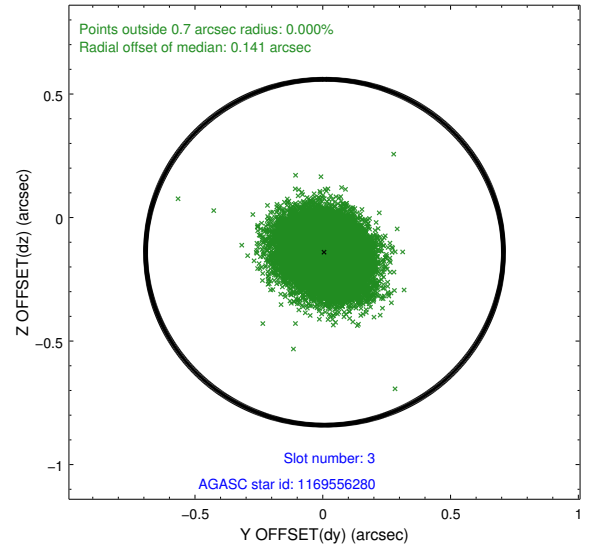
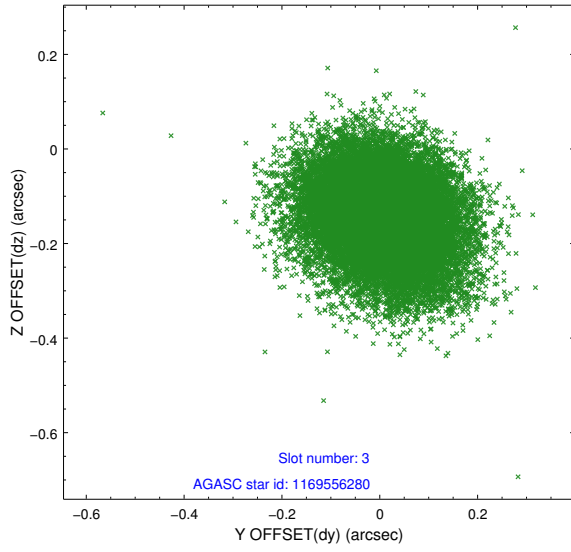


Slot Statistics

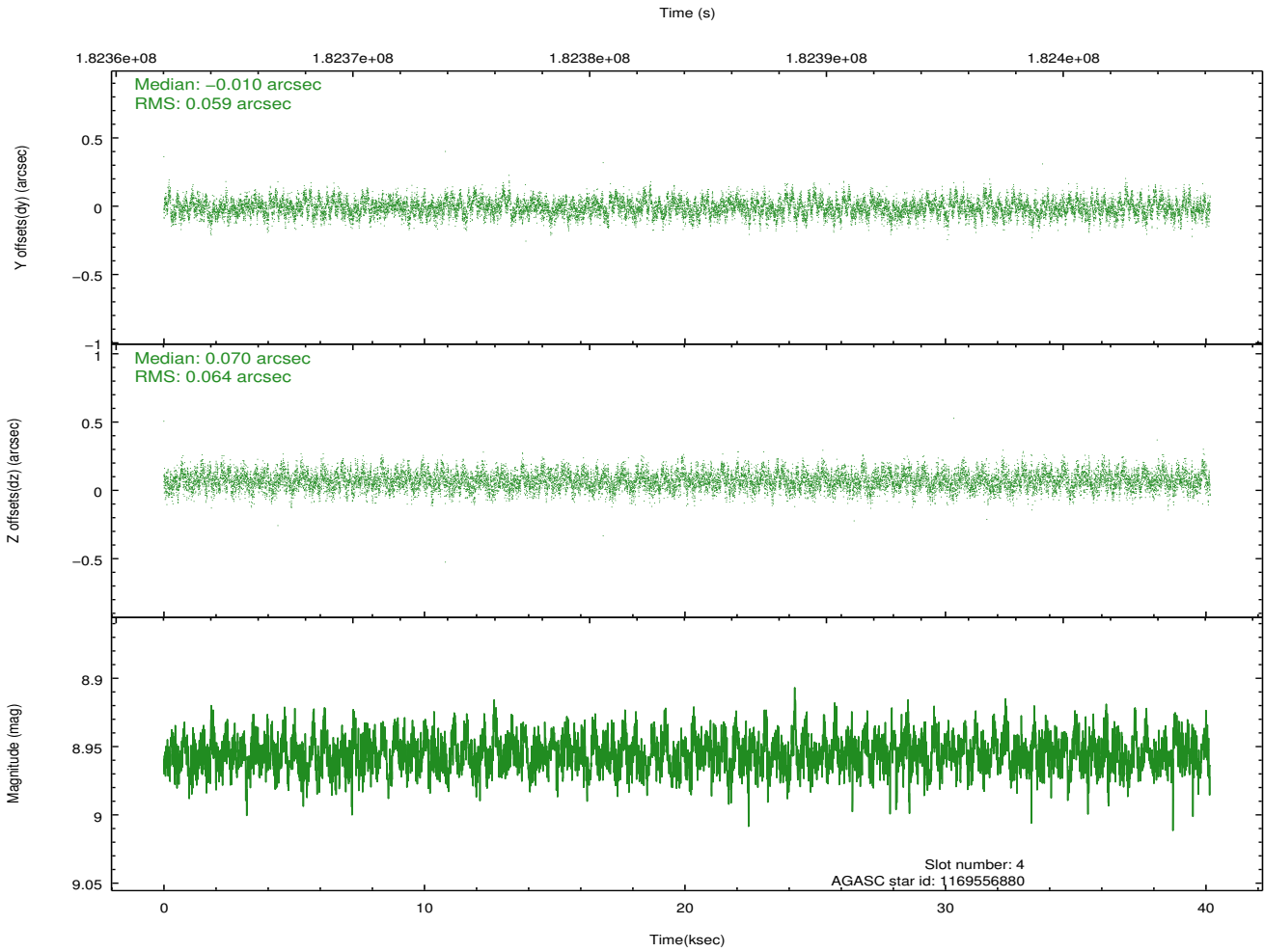
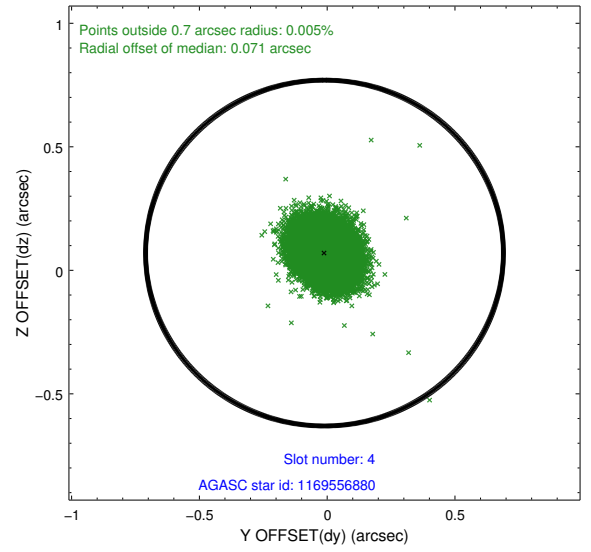
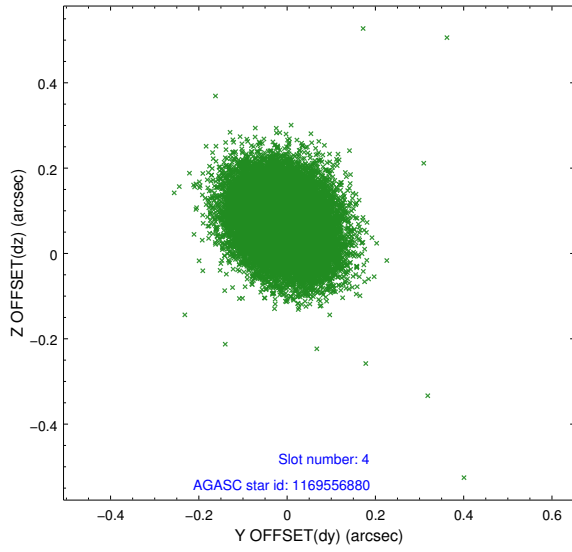
| slot | status | id | mag | n_pts | med_dy | med_dz | dr1 | dr2 | ra | dec | mean_y | mean_z |
|------|--------|------------|------|-------|--------|--------|-------|-------|------------|------------|----------|----------|
| 0 | FID | HRC-S-1 | 6.98 | 9795 | 0.148 | -0.157 | 0.007 | 0.011 | 0.000000 | 0.000000 | -1162.17 | -459.77 |
| 1 | FID | HRC-S-2 | 6.98 | 9797 | 0.128 | -0.107 | 0.005 | 0.009 | 0.000000 | 0.000000 | 1237.38 | -452.43 |
| 2 | FID | HRC-S-3 | 7.00 | 9797 | 0.115 | -0.038 | 0.007 | 0.011 | 0.000000 | 0.000000 | -1164.78 | 569.84 |
| 3 | GUIDE | 1169556280 | 9.94 | 19573 | 0.007 | -0.140 | 0.119 | 0.197 | 116.863935 | -67.303617 | 1708.11 | 262.97 |
| 4 | GUIDE | 1169556880 | 8.96 | 19582 | -0.010 | 0.070 | 0.093 | 0.148 | 118.476472 | -67.455164 | 906.47 | -1891.10 |
| 5 | GUIDE | 1203245384 | 8.54 | 19592 | -0.009 | -0.032 | 0.059 | 0.097 | 117.096059 | -68.354351 | -2086.81 | 347.57 |
| 6 | GUIDE | 1203258824 | 9.89 | 19581 | -0.041 | 0.158 | 0.126 | 0.213 | 118.613315 | -67.511932 | 679.01 | -2051.32 |
| 7 | GUIDE | 1203248984 | 9.70 | 19580 | 0.051 | -0.051 | 0.100 | 0.179 | 117.212023 | -68.341440 | -2057.18 | 189.18 |

2.4 Star Slots

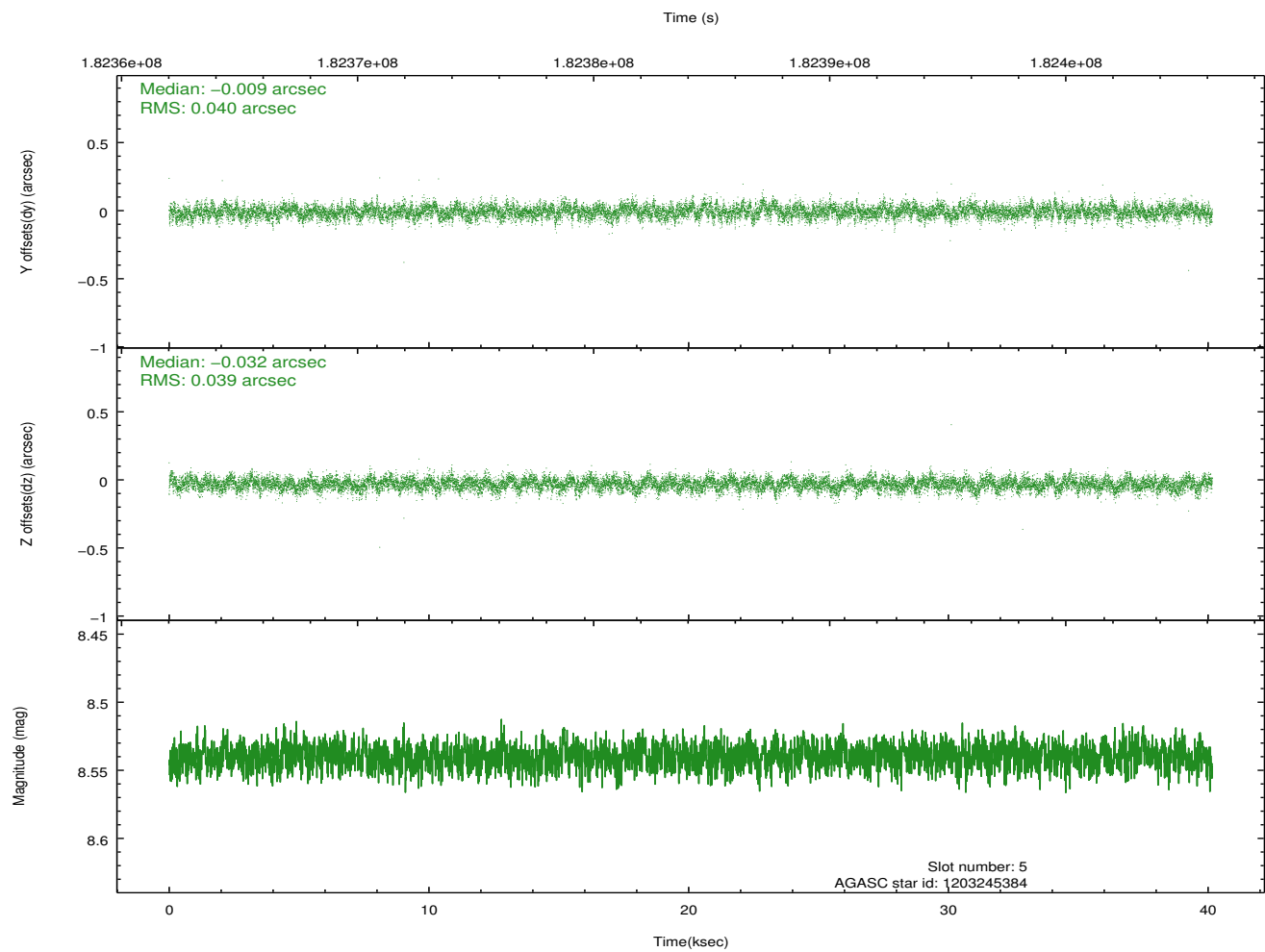
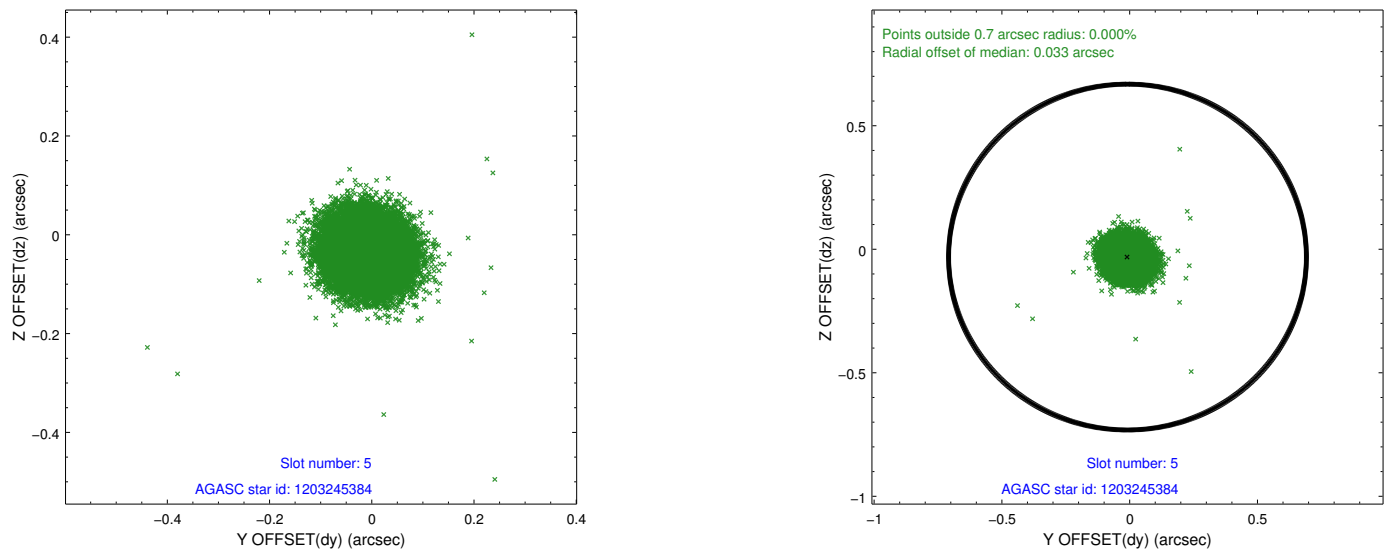
2.4.1 Slot 3



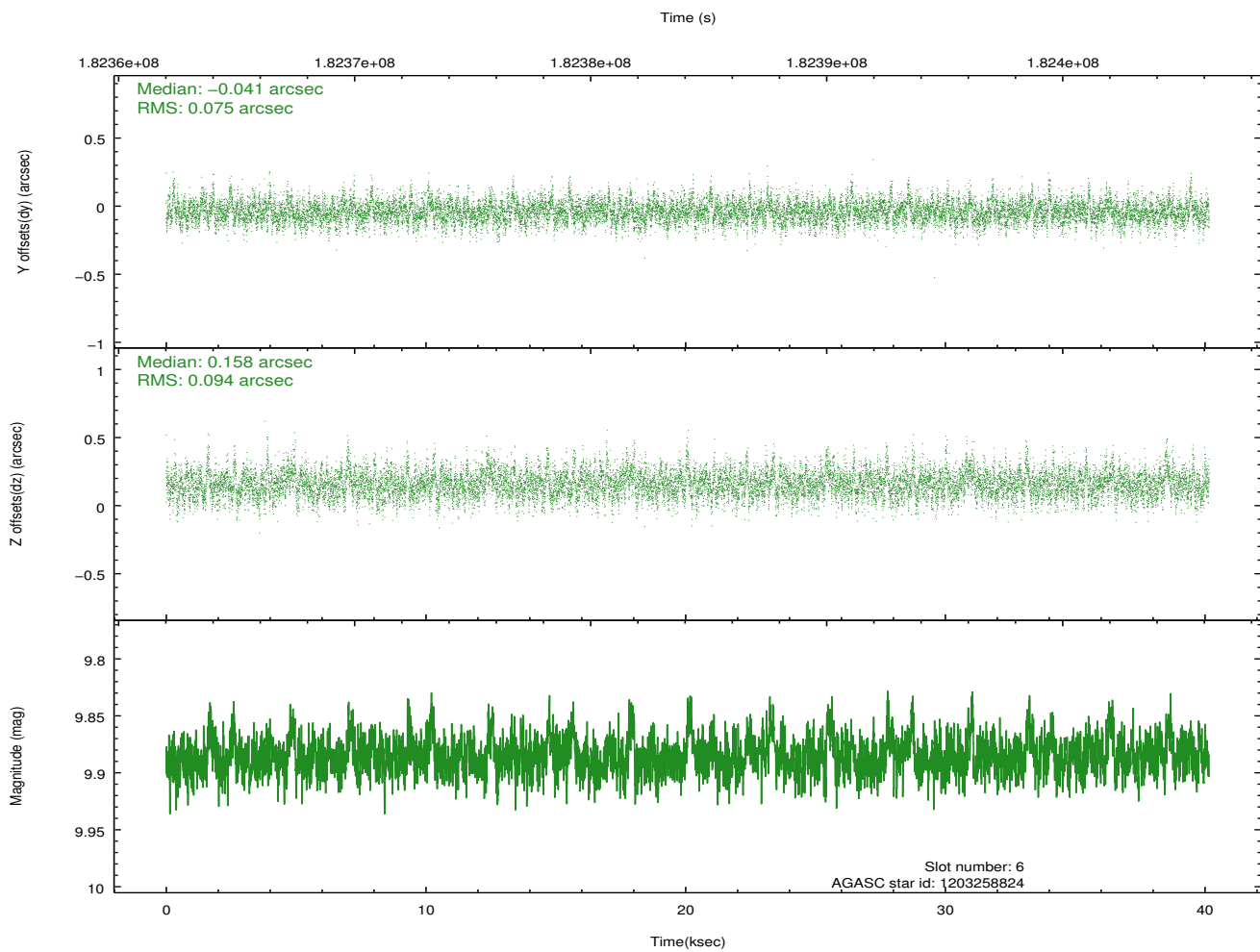
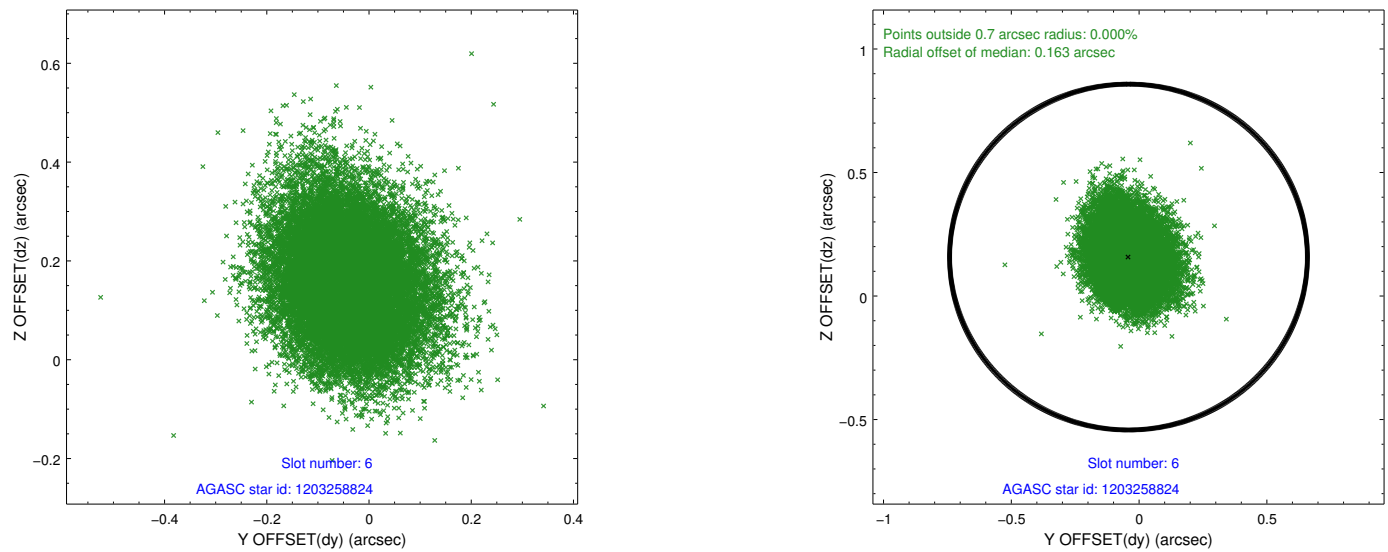
2.4.2 Slot 4



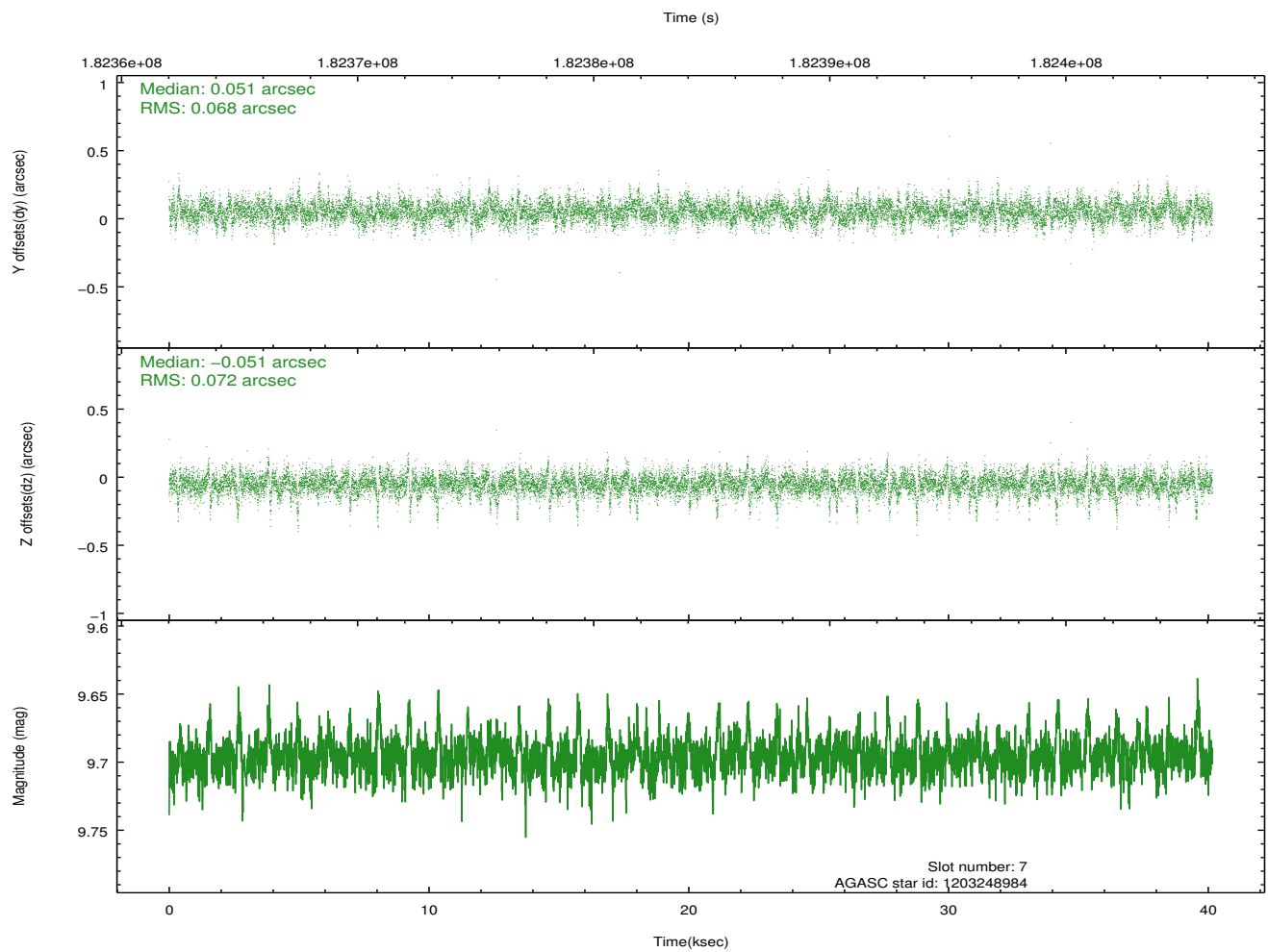
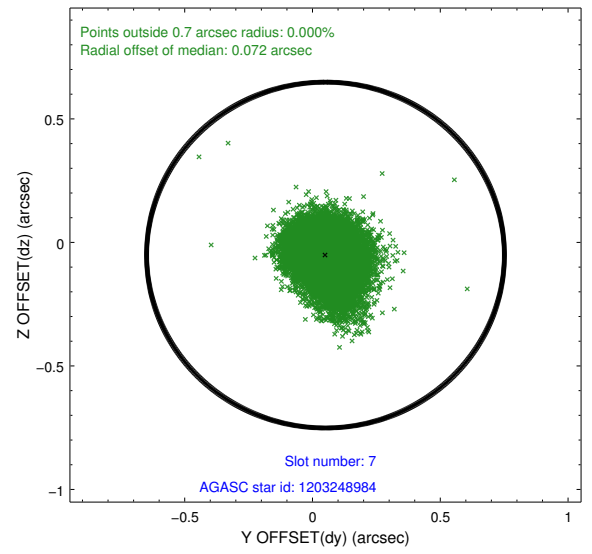
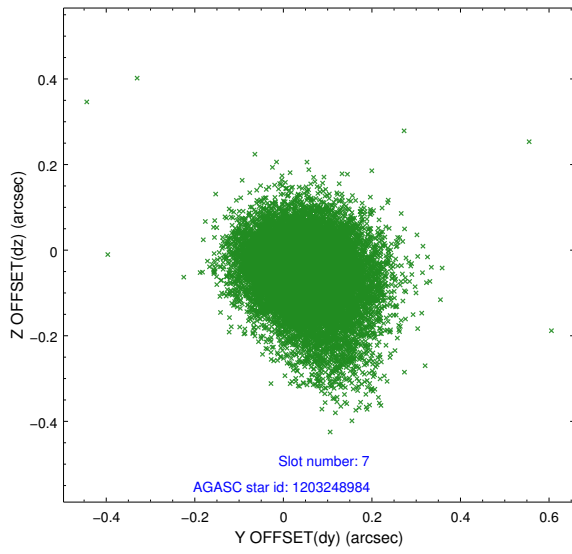
2.4.3 Slot 5



2.4.4 Slot 6

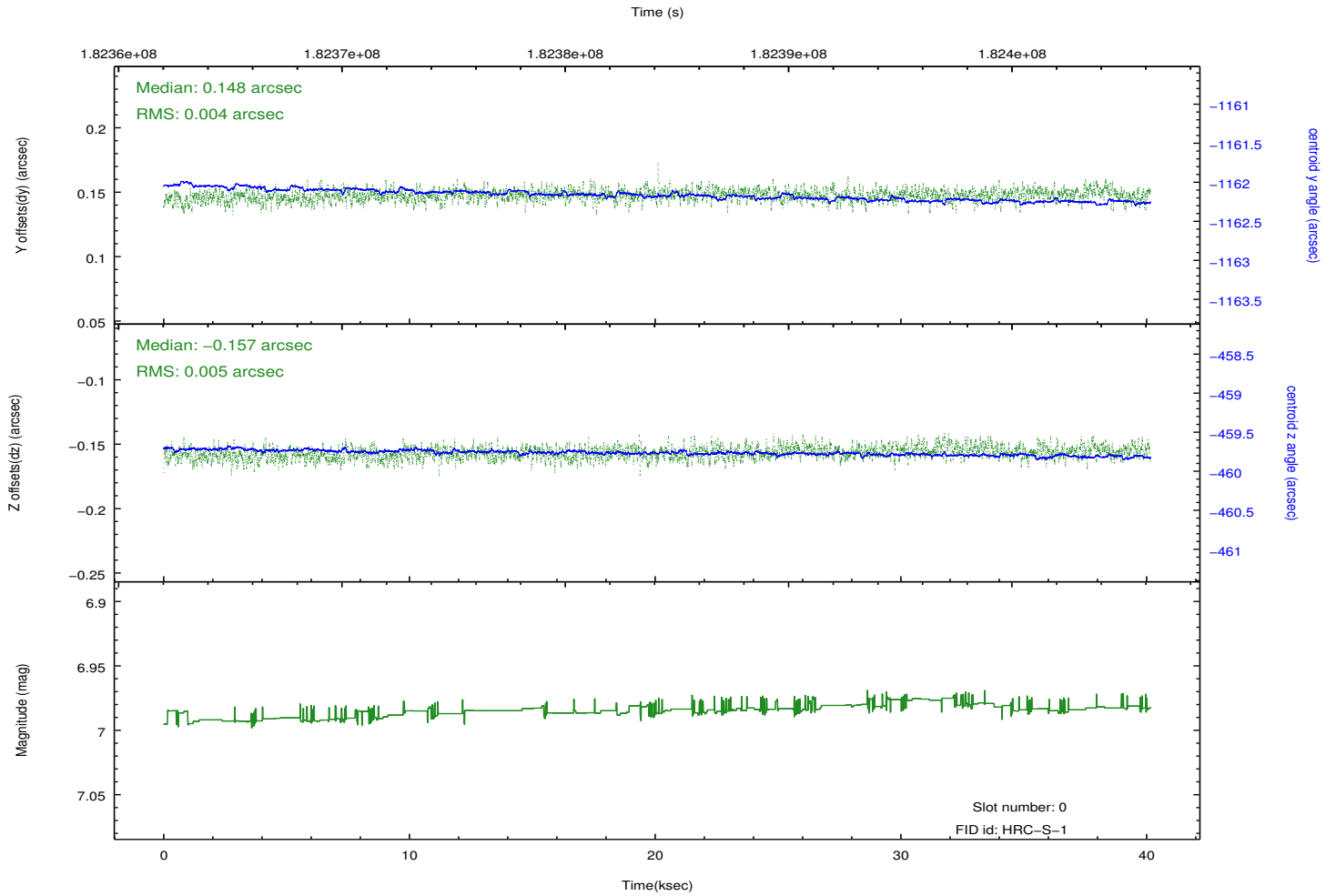
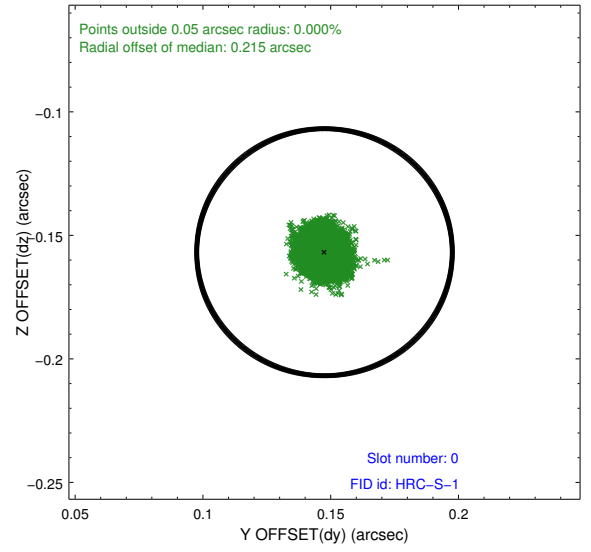
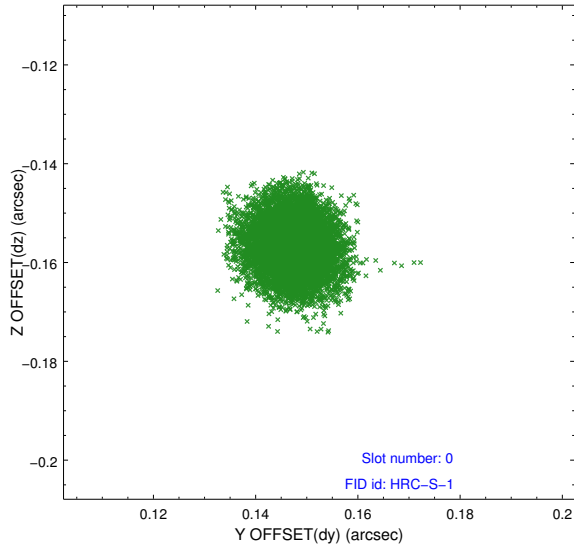


2.4.5 Slot 7

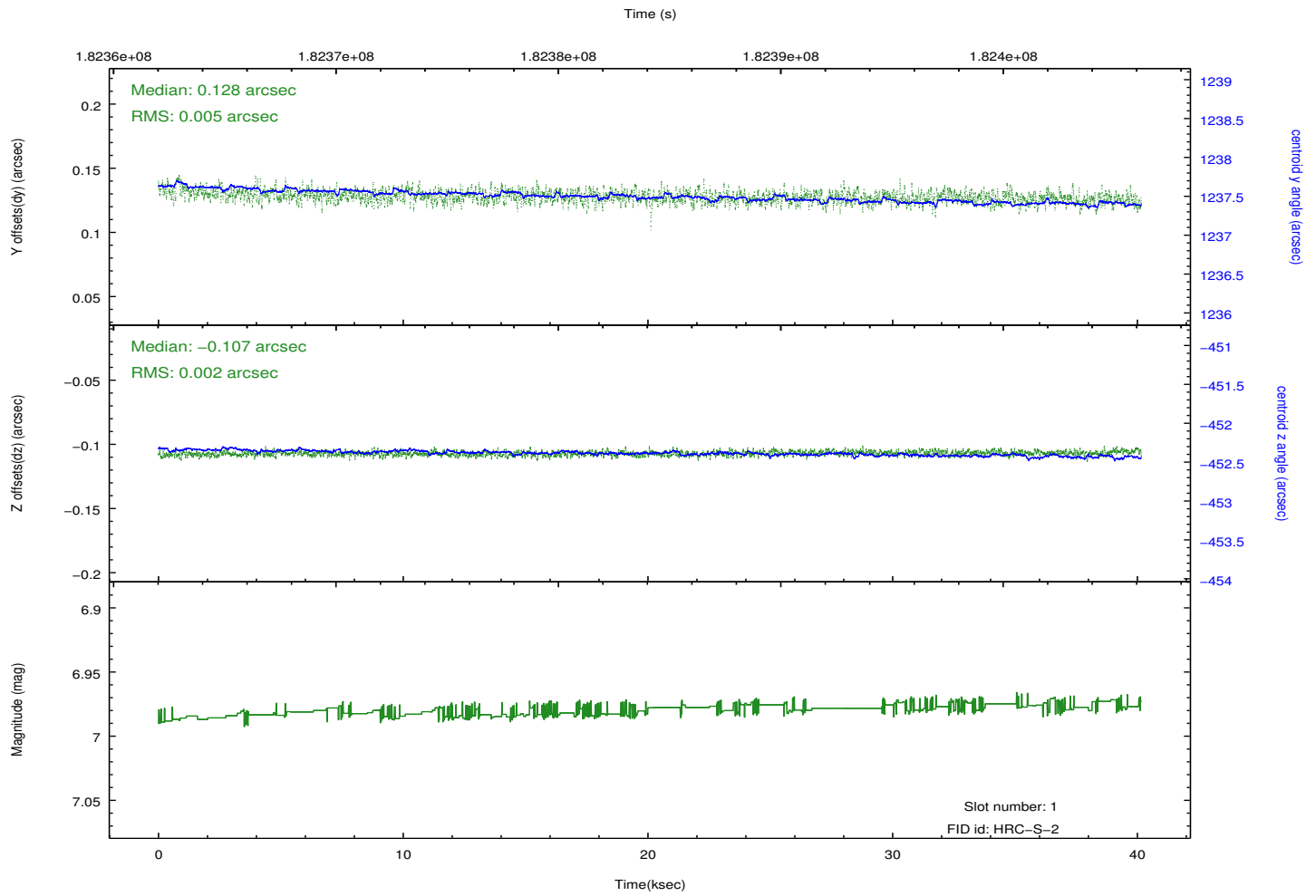
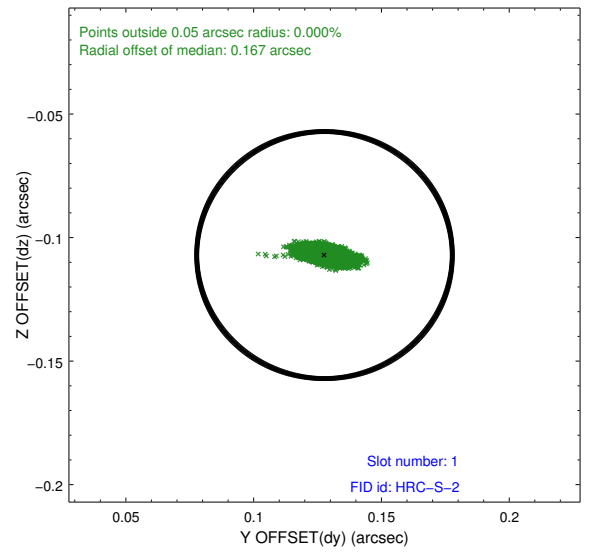
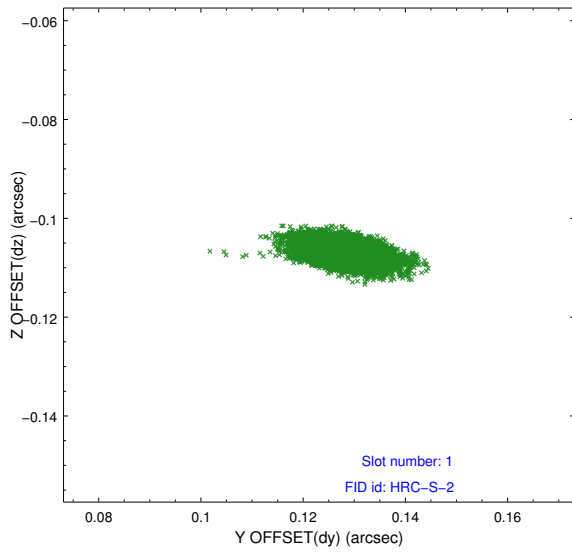


2.5 FID Slots

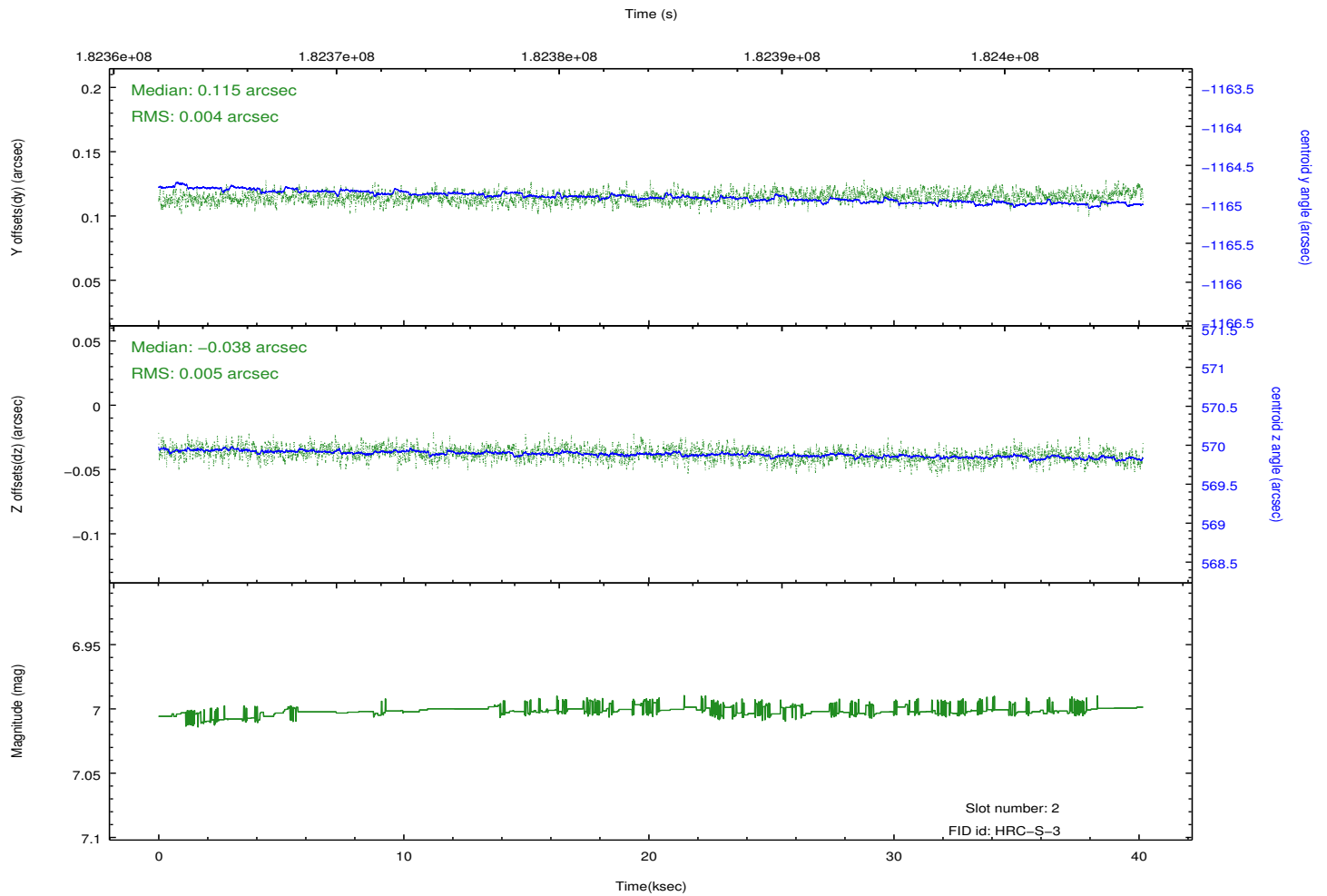
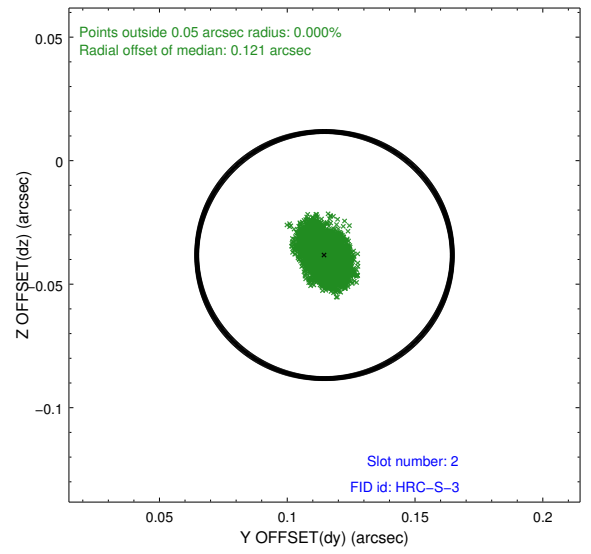
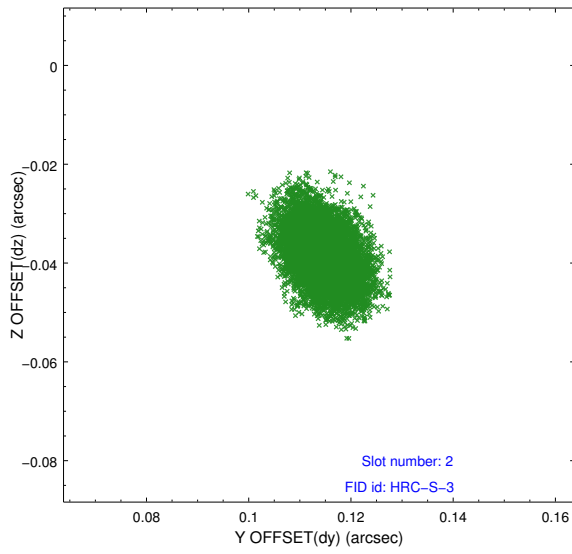
2.5.1 Slot 0



2.5.2 Slot 1

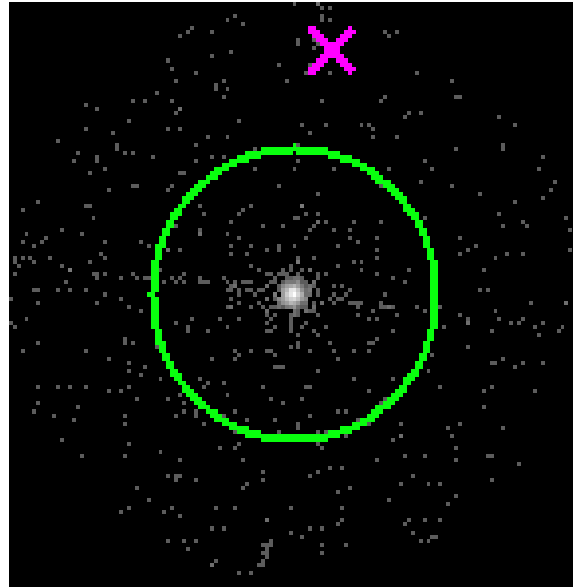


2.5.3 Slot 2

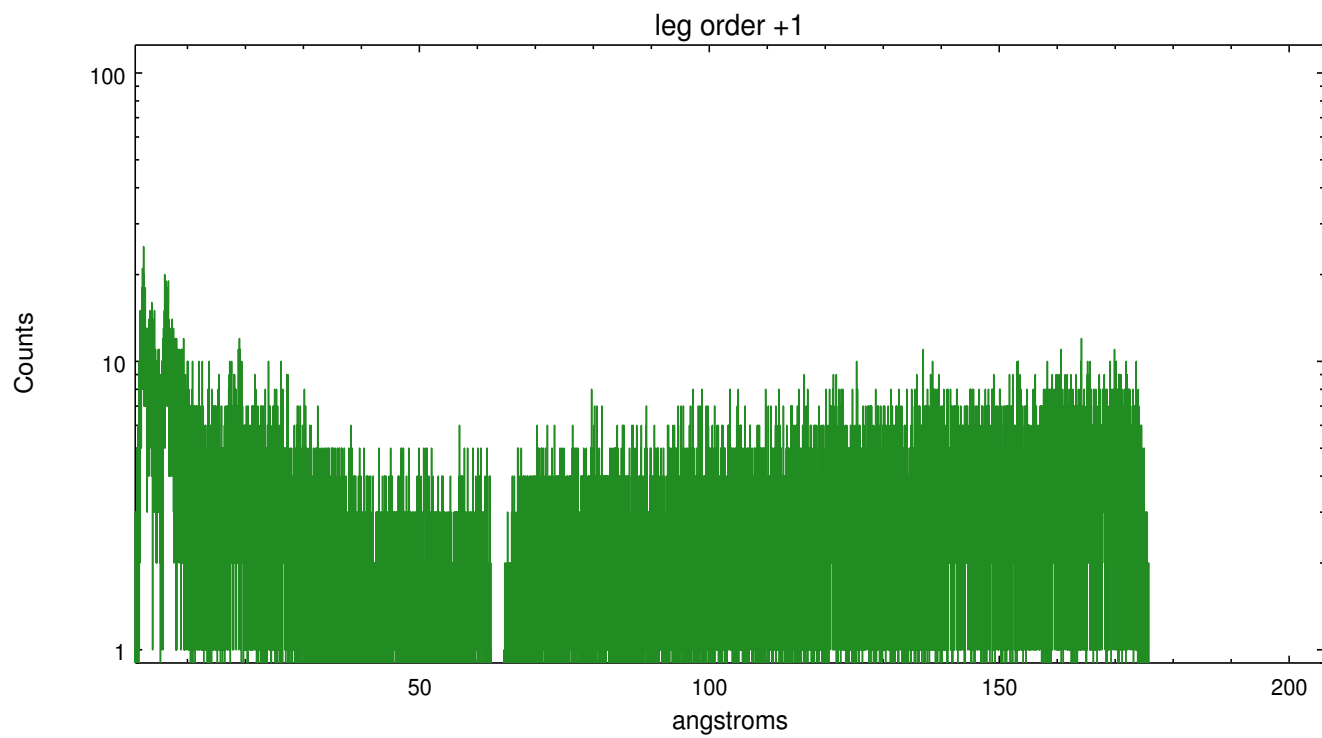
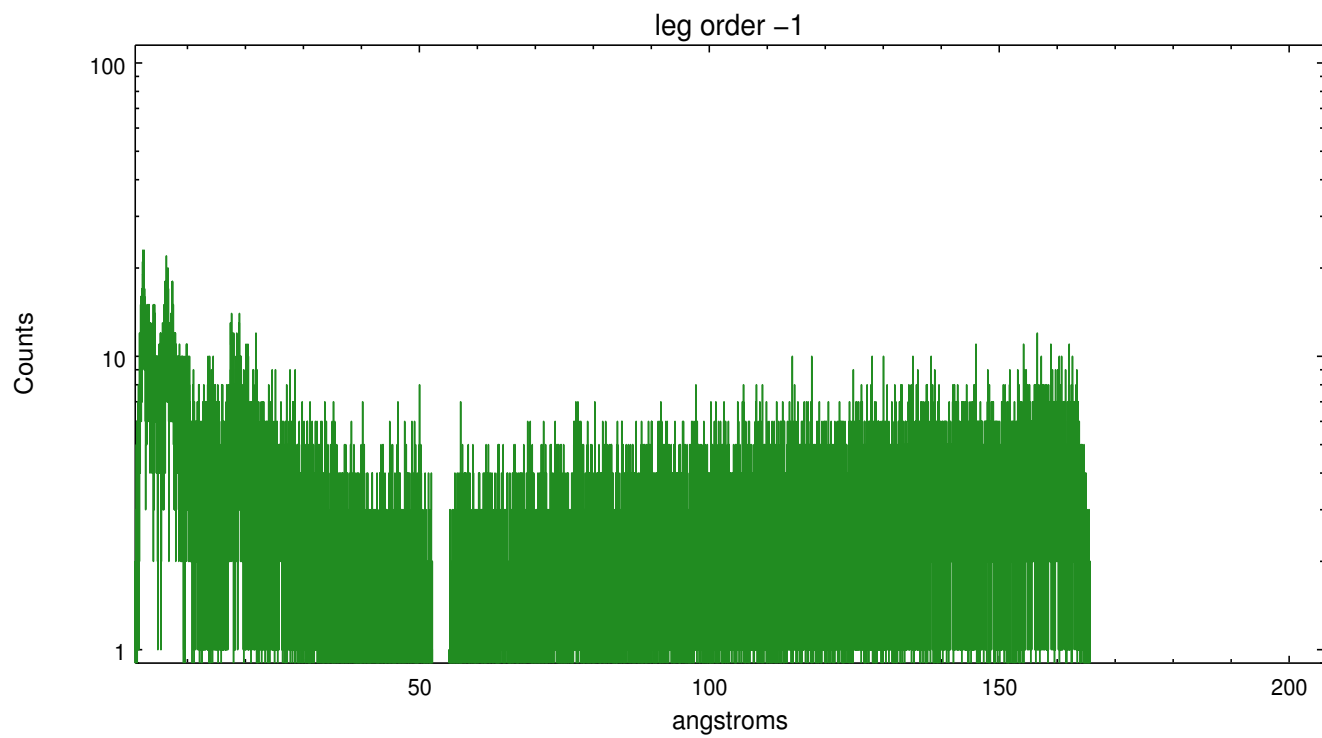


3 Gratings

3.1 LETG Arm



LETG Zero Order



A Summary

A.1 Status

| | |
|----------------------------|-------------|
| V&V Scientist | Joy Nichols |
| V&V Date (YYYY-MM-DD) | 2012.11.09 |
| V&V Edition | 1 |
| V&V Disposition and Status | OK |
| V&V Charge Time | 39.982 |

A.2 Comments