

V&V Reference Report

L2 ASCDS Version : 8.4.5

Observation 3571 - L2 Version 3
Chandra X-Ray Center

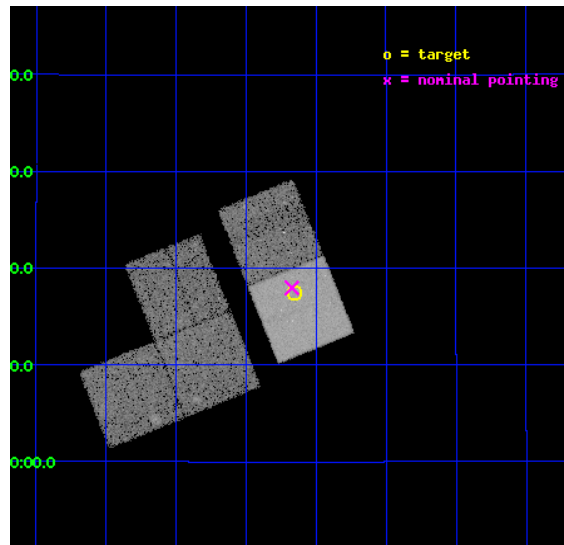
L2 Processing Date : Oct 19 2012

Contents

1	Front	2
2	OBI	3
2.1	OBI	3
2.1.1	Images	3
2.1.2	Bias	3
2.1.3	Parameters	4
2.1.4	Events	4
2.2	Compared Parameters	5
2.3	Aspect	6
2.4	Star Slots	9
2.4.1	Slot 3	9
2.4.2	Slot 4	10
2.4.3	Slot 5	11
2.4.4	Slot 6	12
2.4.5	Slot 7	13
2.5	FID Slots	14
2.5.1	Slot 0	14
2.5.2	Slot 1	15
2.5.3	Slot 2	16
A	Summary	17
A.1	Status	17
A.2	Comments	17

1 Front

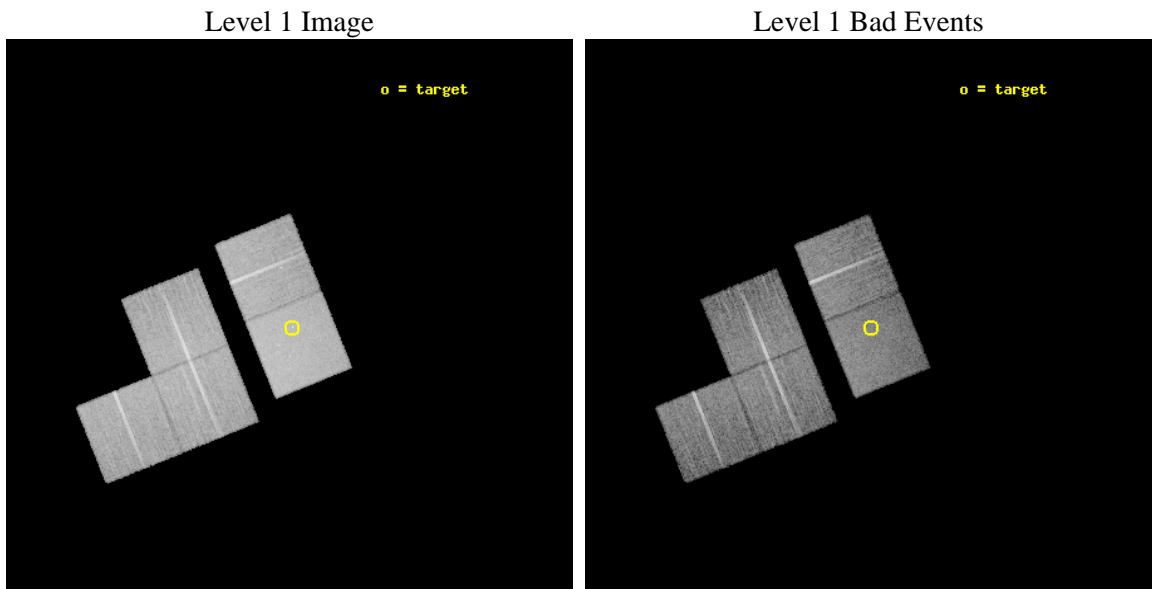
seq_num	700633	Sequence number
obs_id	3571	Observation id
title	A STUDY OF QUASAR EVOLUTION WITH THE AID OF LENSING	Proposal title
observer	Professor Gordon Garmire	Principal investigator
object	HS0818+1227	Source name
dtcycle	0	
cycle	P	events from which exps? Prim/Second/Both
ra_targ	125.412917	Observer's specified target RA [deg]
dec_targ	12.291389	Observer's specified target Dec [deg]
ra_nom	125.41817349489	Nominal RA [deg]
dec_nom	12.299569441107	Nominal Dec [deg]
roll_nom	68.031068540496	Nominal Roll [deg]
revision	3	Processing version of data
ontime	20029.09996146	Sum of GTIs [s]
livetime	19767.405025254	Livetime [s]
ontime1	20029.09996146	Sum of GTIs [s]
ontime2	20025.958981246	Sum of GTIs [s]
ontime3	20029.09996146	Sum of GTIs [s]
ontime6	20022.817981064	Sum of GTIs [s]
ontime7	20029.09996146	Sum of GTIs [s]
l2events	114320	Number of level 2 events



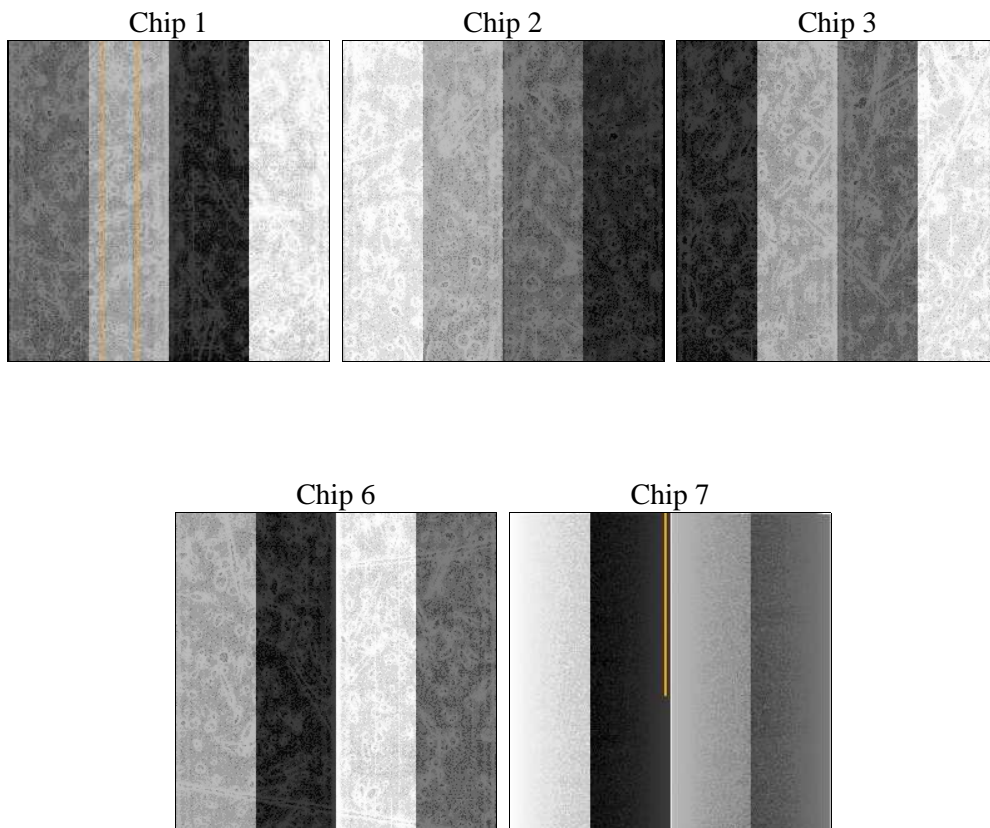
2 OBI

2.1 OBI

2.1.1 Images



2.1.2 Bias



2.1.3 Parameters

obi_num	0	Obi number	sched_exp_time	19851.000000	[s] Scheduled observation exposure time
ascdsver	8.4.5	Processing system revision	ontime	20029.09996146	Sum of GTIs [s]
caldbver	4.5.2	 	ontime1	20029.09996146	Sum of GTIs [s]
date	2012-10-19T05:43:12	Date and time of file creation	ontime2	20025.958981246	Sum of GTIs [s]
revision	3	Processing version of data	ontime3	20029.09996146	Sum of GTIs [s]
			ontime6	20022.817981064	Sum of GTIs [s]
			ontime7	20029.09996146	Sum of GTIs [s]
			l1events	650403	Number of level 1 events

2.1.4 Events

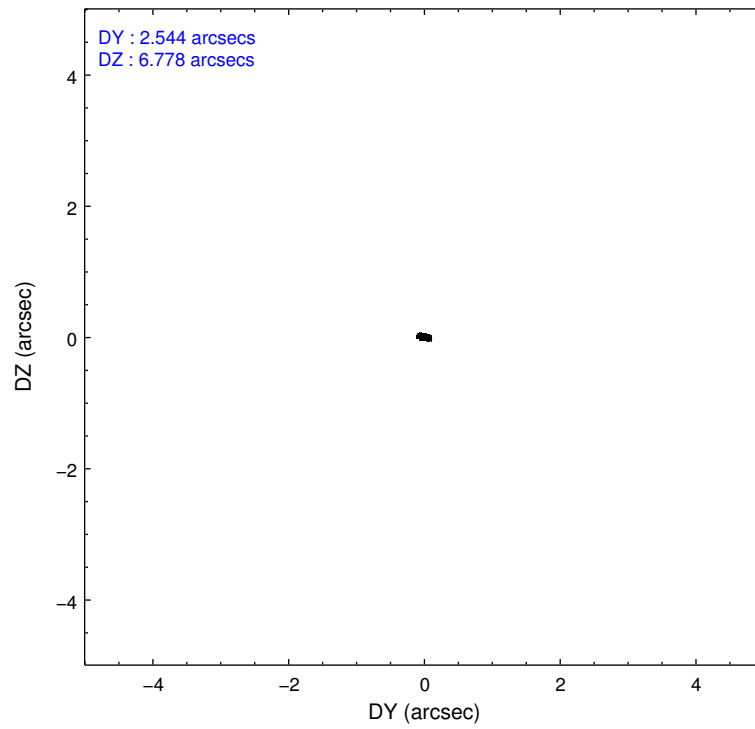
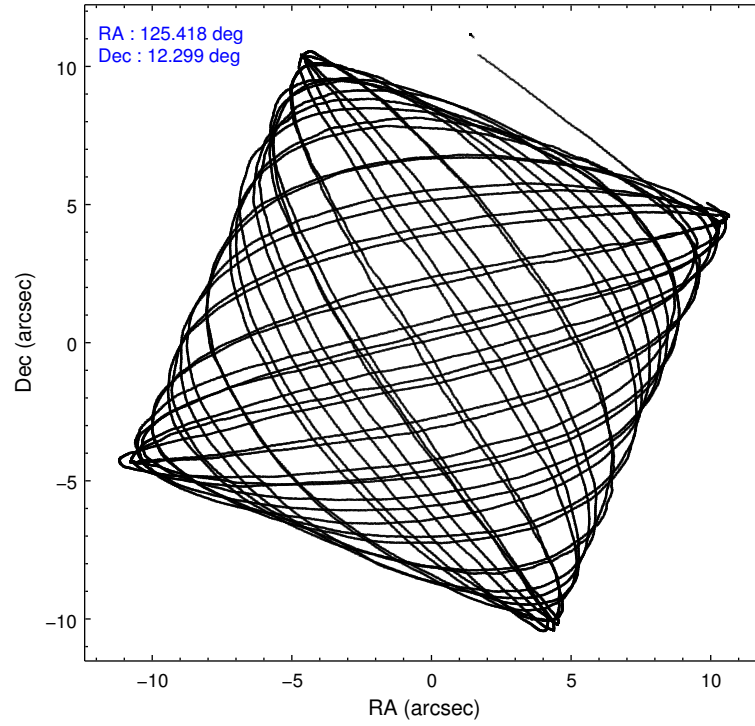
	ccd 1	ccd 2	ccd 3	ccd 6	ccd 7
level 1 events	112416	122355	122772	127838	165022
rejected events	97363	108520	108710	113008	99474
rejected %	86%	88%	88%	88%	60%

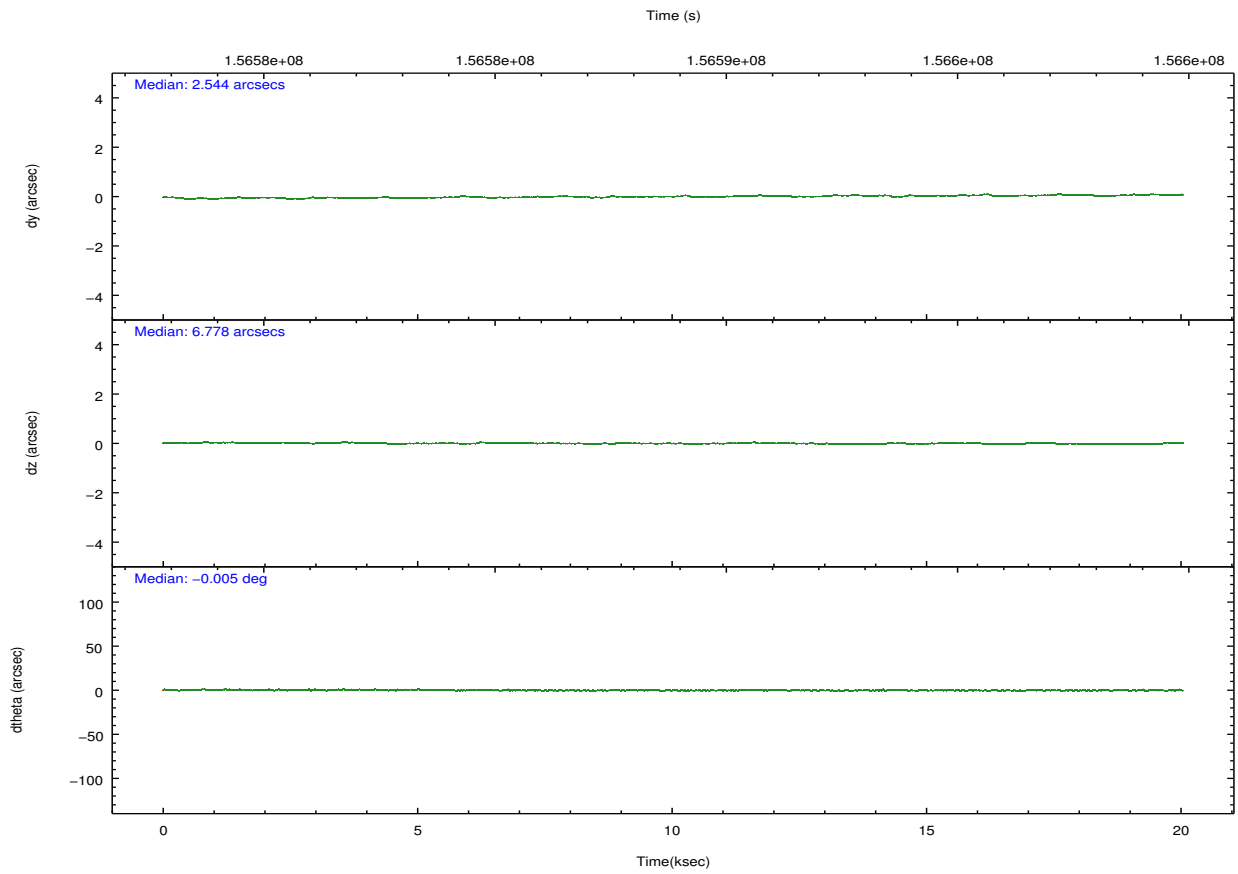
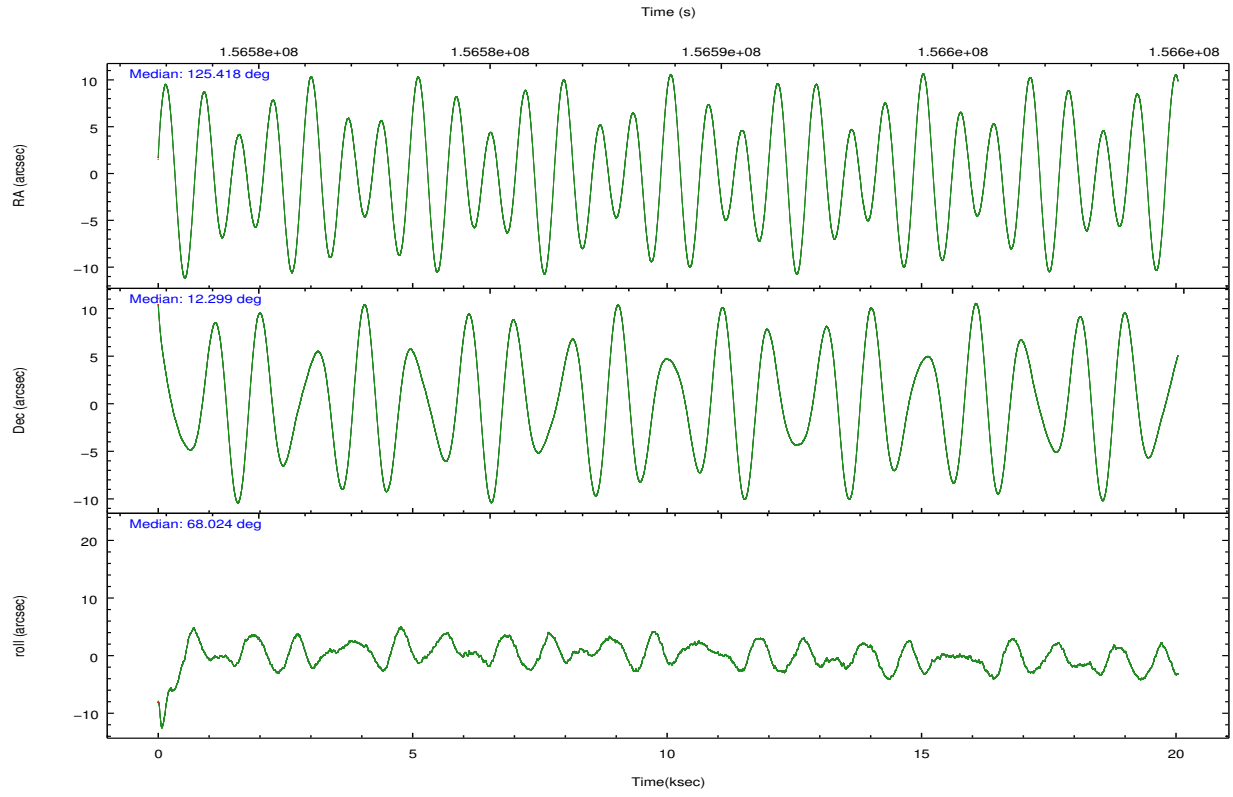
	ccd 1	ccd 2	ccd 3	ccd 6	ccd 7
grade 0 events	6224	6298	6457	6269	6476
	5%	5%	5%	4%	3%
grade 1 events	57	72	69	52	165
	0%	0%	0%	0%	0%
grade 2 events	3215	2817	2741	3020	13139
	2%	2%	2%	2%	7%
grade 3 events	1536	1419	1356	1546	6100
	1%	1%	1%	1%	3%
grade 4 events	1551	1397	1486	1431	5953
	1%	1%	1%	1%	3%
grade 5 events	5078	4654	5356	5622	15471
	4%	3%	4%	4%	9%
grade 6 events	3029	2399	2534	3044	36145
	2%	1%	2%	2%	21%
grade 7 events	91726	103299	102773	106854	81573
	81%	84%	83%	83%	49%

2.2 Compared Parameters

Parameter	Planned	Actual	Parameter	Planned	Actual
Instrument	ACIS	ACIS	Obspar format version number	7	7
Detector	ACIS-12367	ACIS-12367	Obspar file type	PREDICTED	ACTUAL
Grating	NONE	NONE	Obspar update status	NONE	UPDATED
Data mode	VFAINT	VFAINT	Number of optional ACIS chips dropped	0	0
Observation mode	POINTING	POINTING	On-chip summing requested	N	N
[deg] Pointing RA	125.422439	125.4181734948908	Subarray requested	NONE	NONE
[deg] Pointing Dec	12.272674	12.2995694411066	Alternating exposures requested	N	N
[deg] Pointing Roll	67.873527	68.03106854049571	[s] Primary exposure time	0.000000	3.1
[mm] SIM focus pos	-0.684267	-0.6828225247311905			
[mm] SIM defocus	0	0.001444936568705701			
[mm] SIM translation stage pos	-190.132523	-190.1400660498719			
[mm] SIM translation stage offset	0	0.00754346686406393			
[s] Observation start time (MET)	156579018.184000	156577678.38013			
Observation start date	2002-12-18T06:09:14	2002-12-18T05:47:58			
[s] Observation end time (MET)	156598869.184000	156599687.69354			
Observation end date	2002-12-18T11:40:05	2002-12-18T11:54:47			
Read mode	TIMED	TIMED			

2.3 Aspect



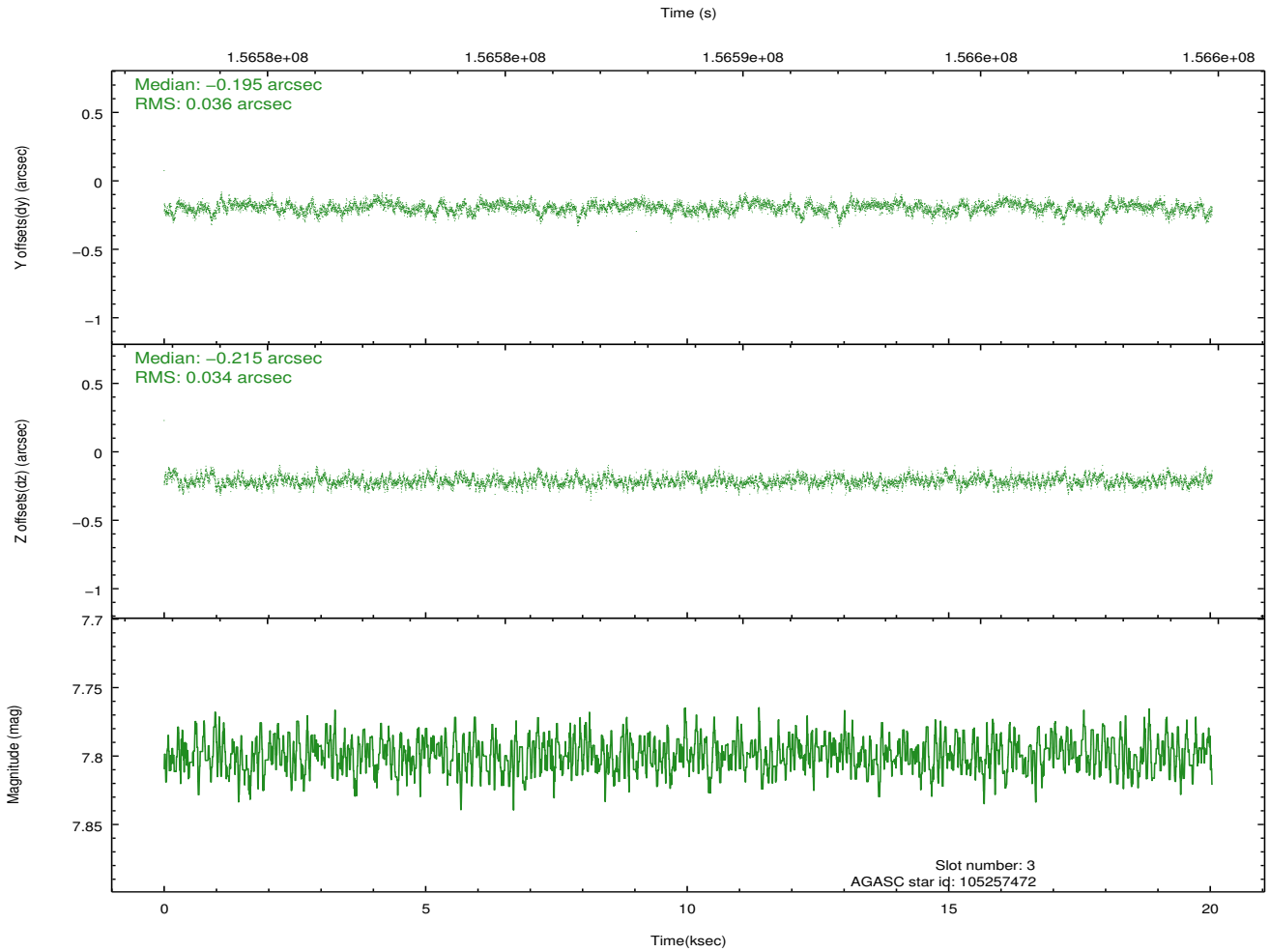
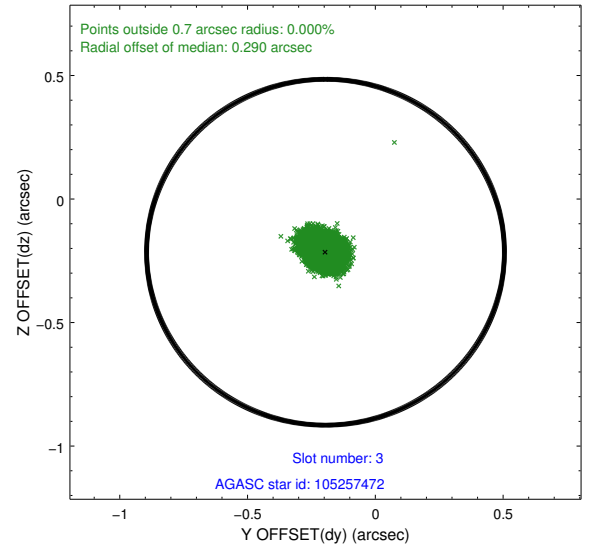
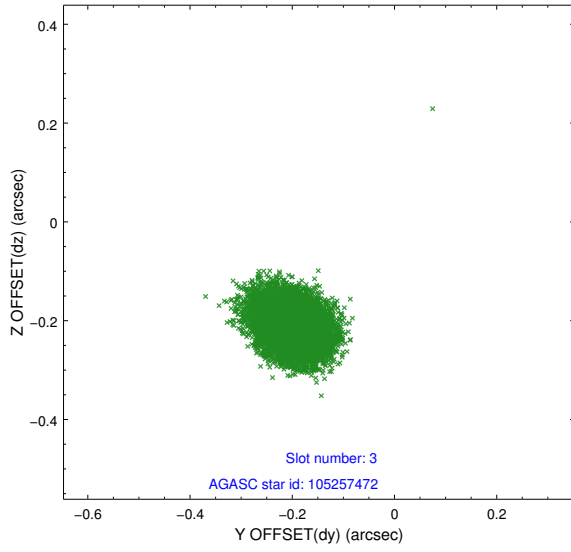


Slot Statistics

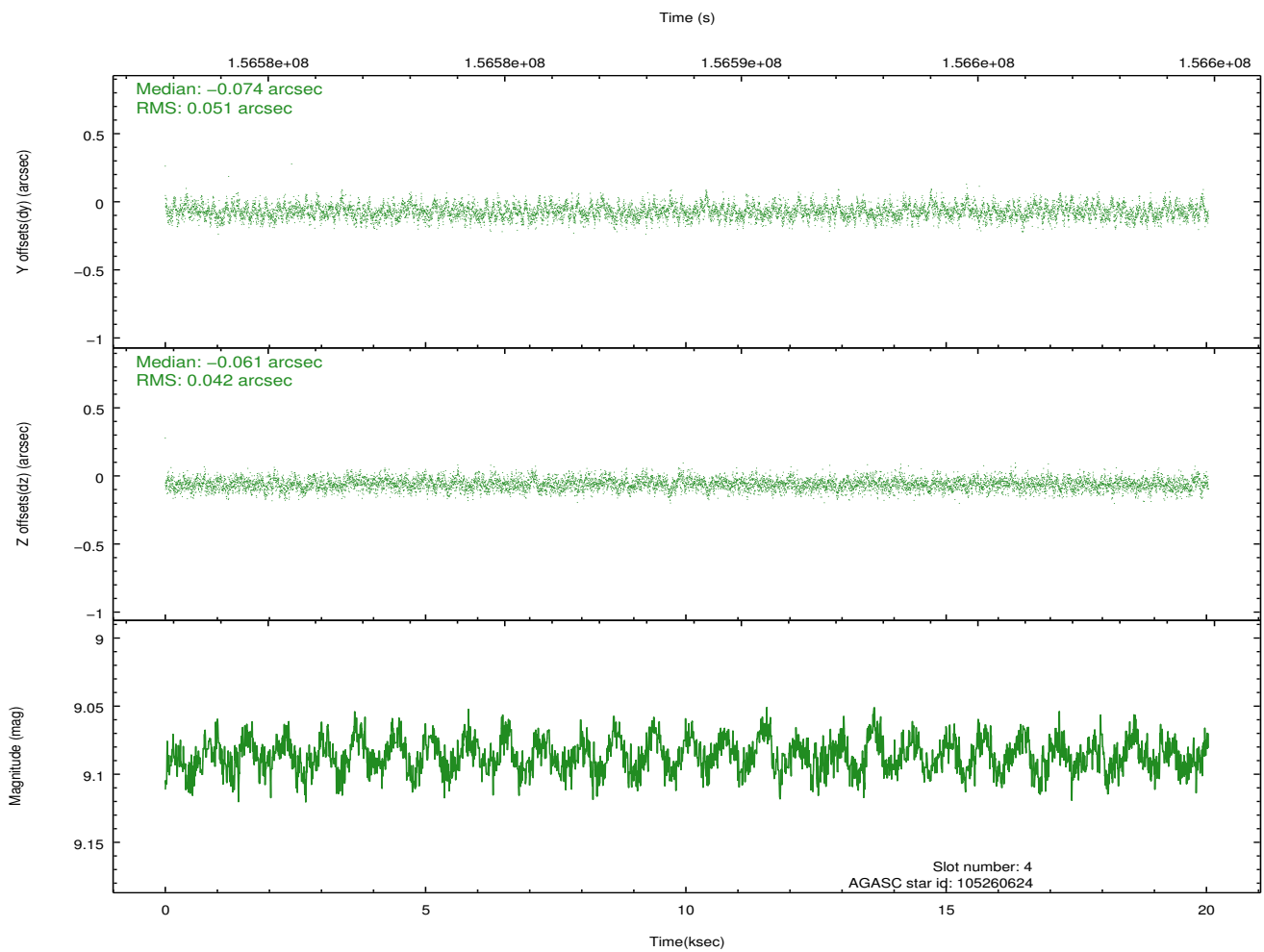
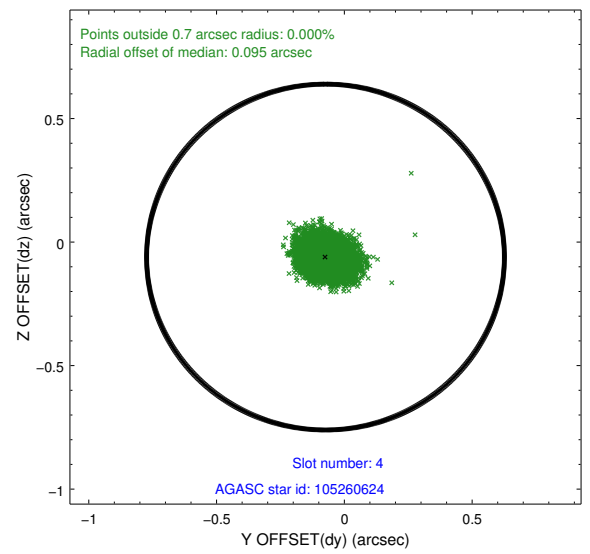
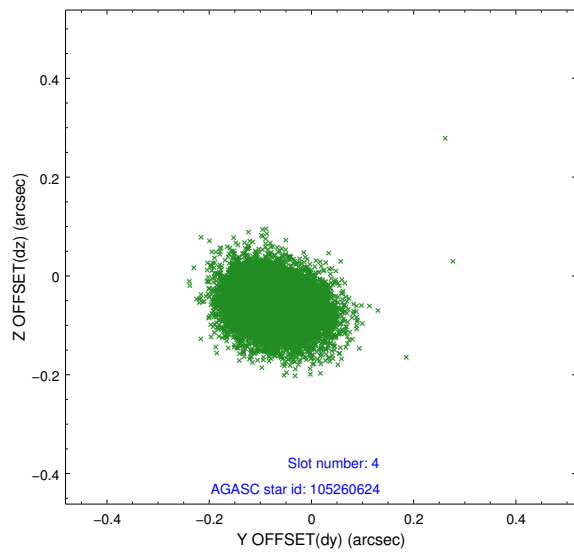
slot	status	id	mag	n_pts	med_dy	med_dz	dr1	dr2	ra	dec	mean_y	mean_z
0	FID	ACIS-S-2	7.12	4887	-0.033	0.002	0.007	0.011	0.000000	0.000000	-755.19	-1727.94
1	FID	ACIS-S-4	7.21	4888	-0.006	0.016	0.005	0.010	0.000000	0.000000	2158.01	180.39
2	FID	ACIS-S-5	7.24	4888	0.008	-0.008	0.007	0.011	0.000000	0.000000	-1807.77	174.21
3	GUIDE	105257472	7.80	9776	-0.195	-0.215	0.052	0.086	125.374512	12.813339	1740.05	888.96
4	GUIDE	105260624	9.09	9771	-0.074	-0.061	0.070	0.113	125.278620	12.775843	1488.53	1150.24
5	GUIDE	105262824	8.91	9769	-0.010	0.033	0.072	0.118	125.790886	12.186918	204.11	-1316.83
6	GUIDE	105263080	9.45	9770	0.214	0.060	0.087	0.146	125.473433	11.801195	-1503.66	-806.05
7	GUIDE	105259656	9.66	9770	0.059	0.183	0.109	0.176	125.983342	12.035466	-44.54	-2150.25

2.4 Star Slots

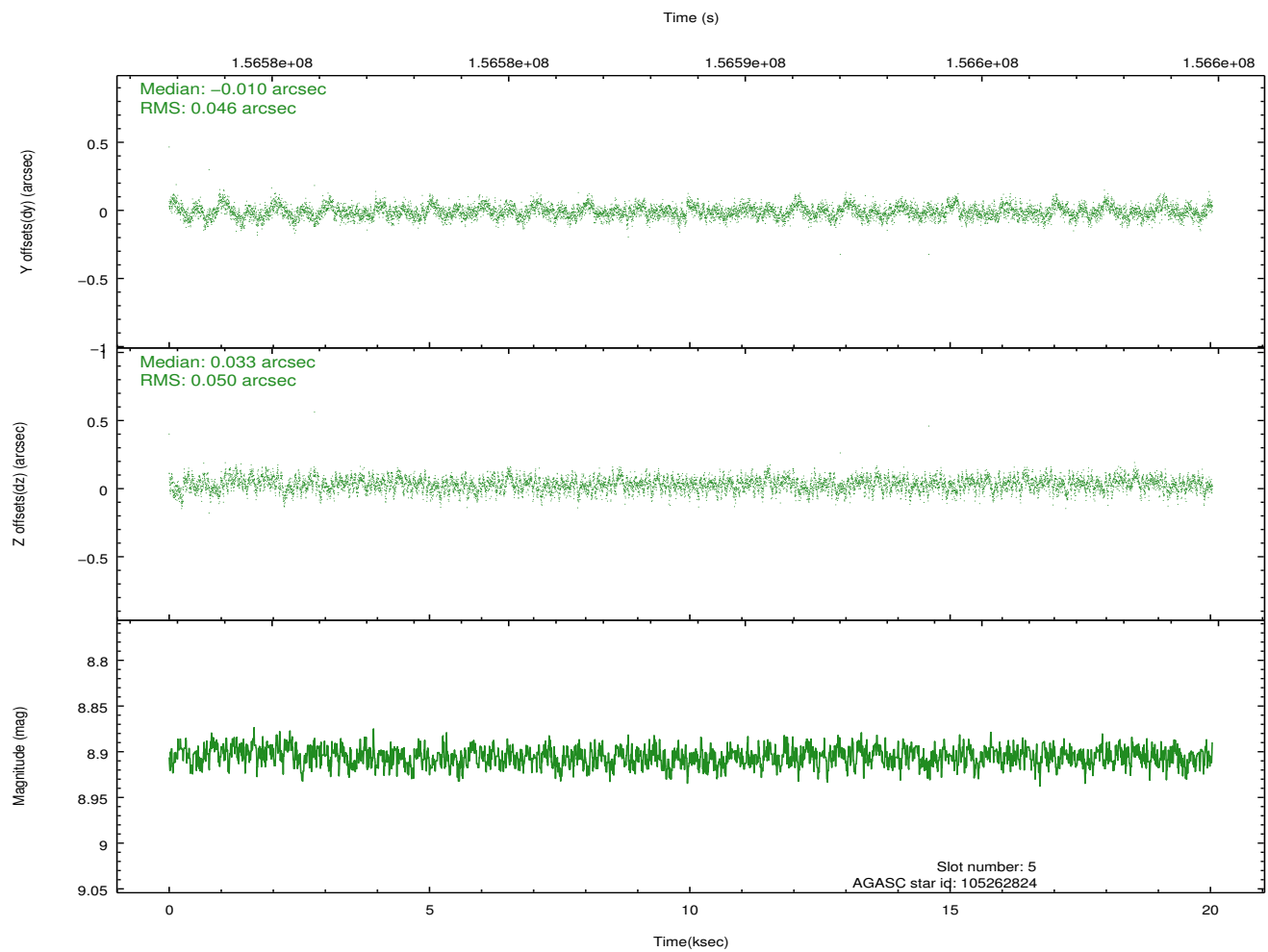
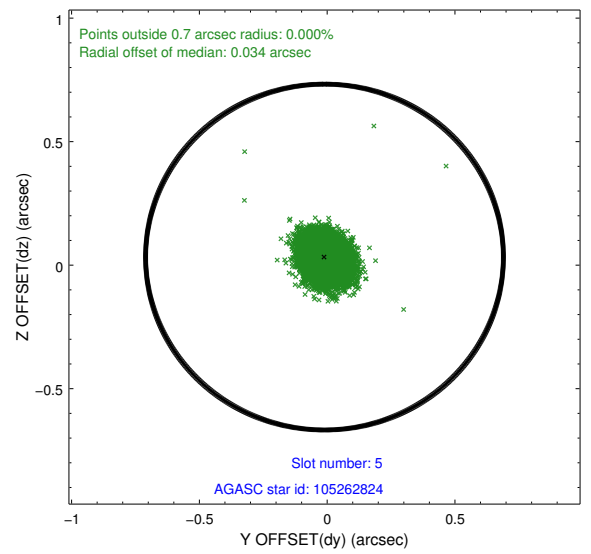
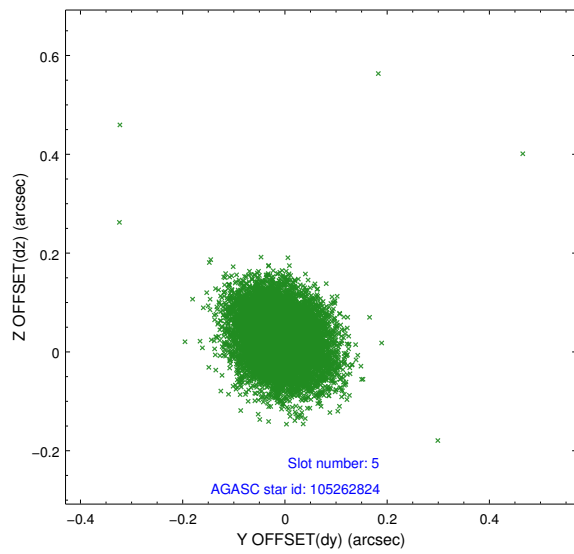
2.4.1 Slot 3



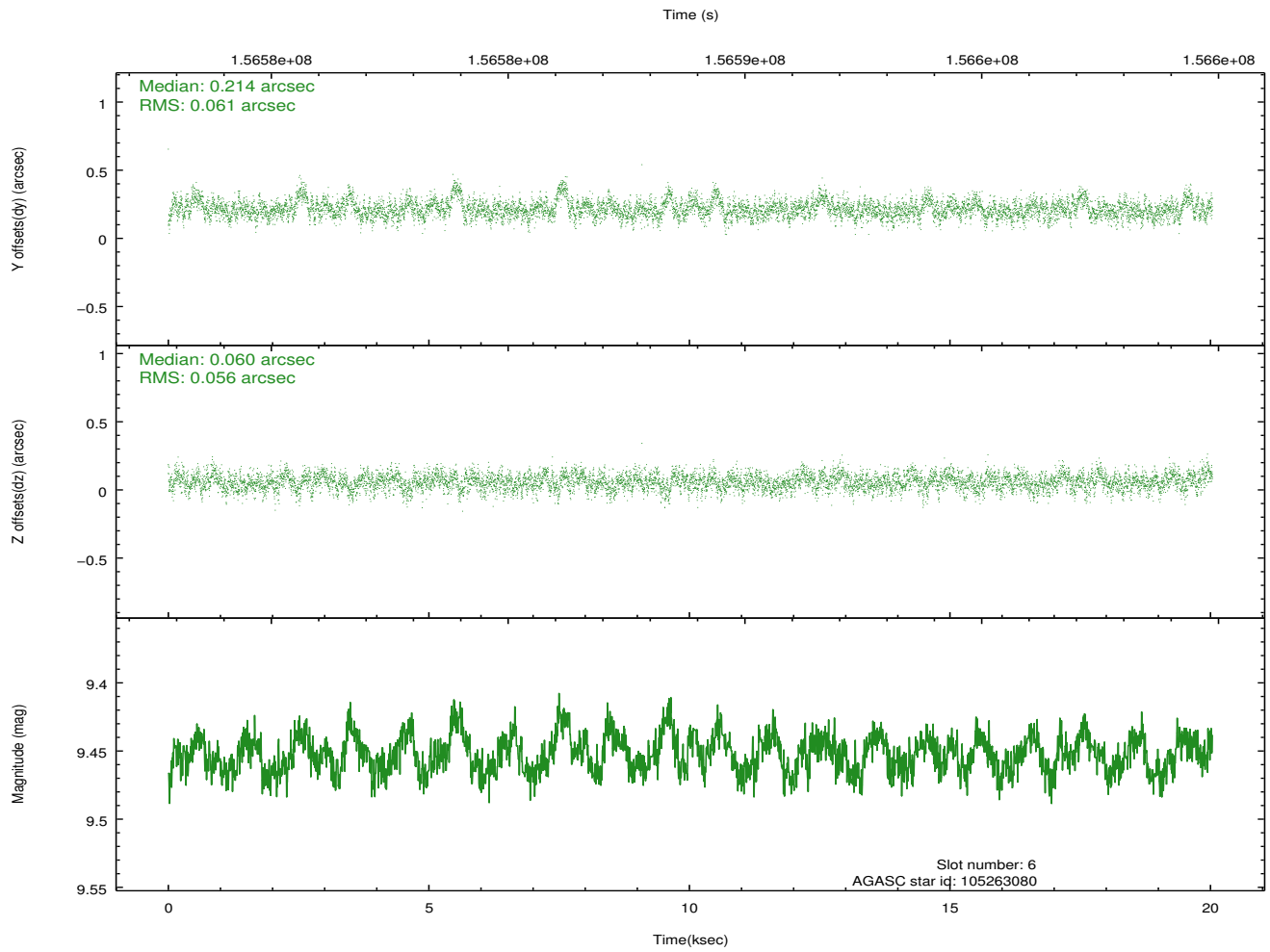
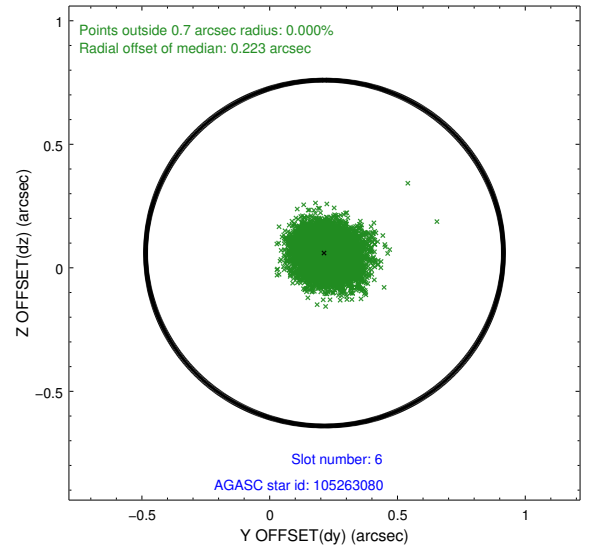
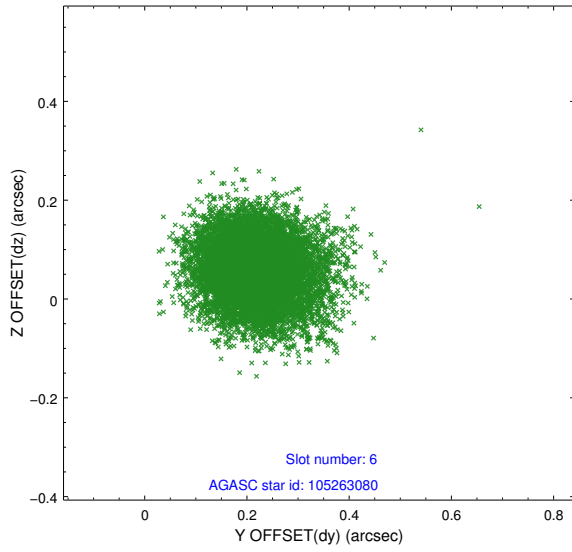
2.4.2 Slot 4



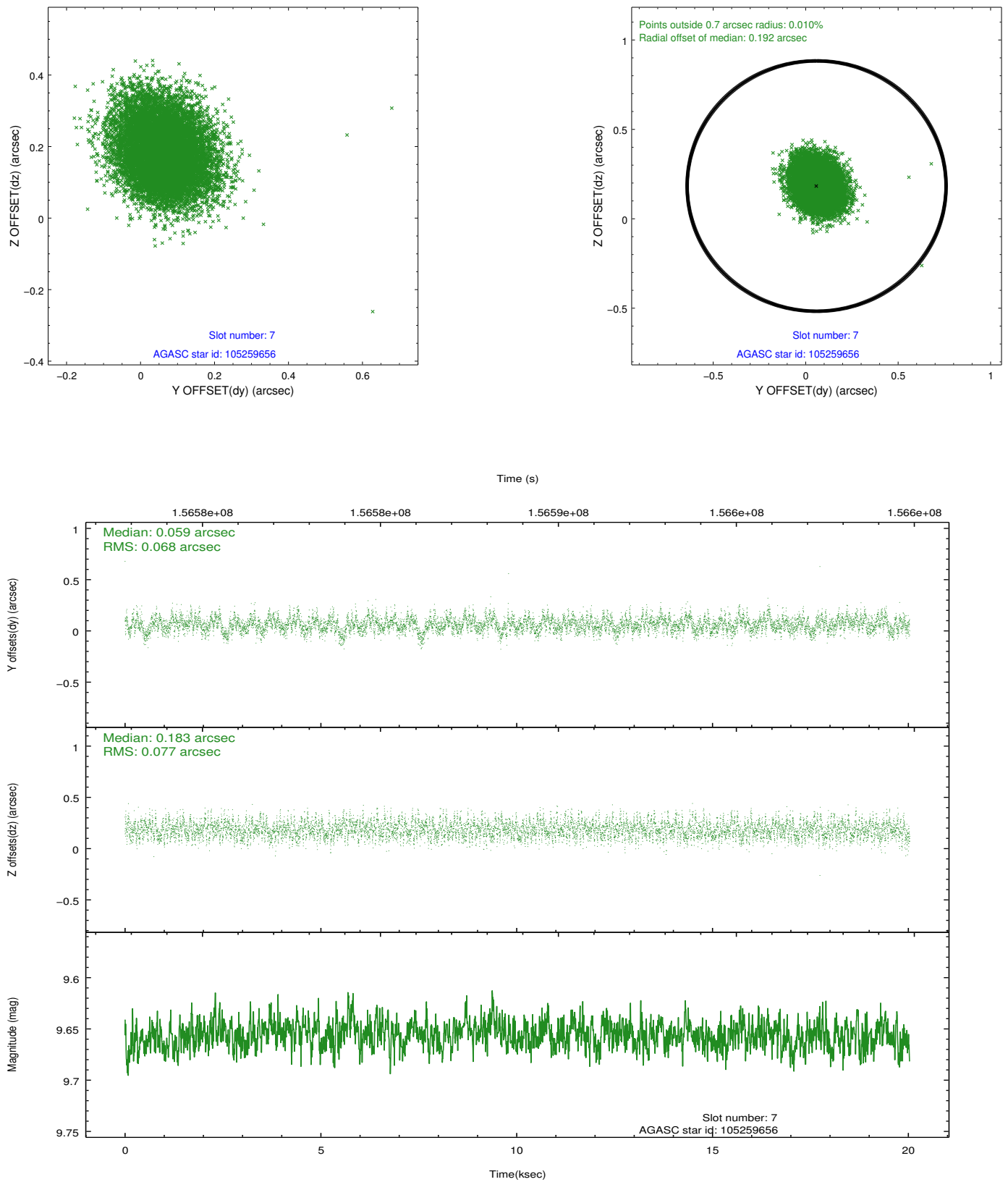
2.4.3 Slot 5



2.4.4 Slot 6

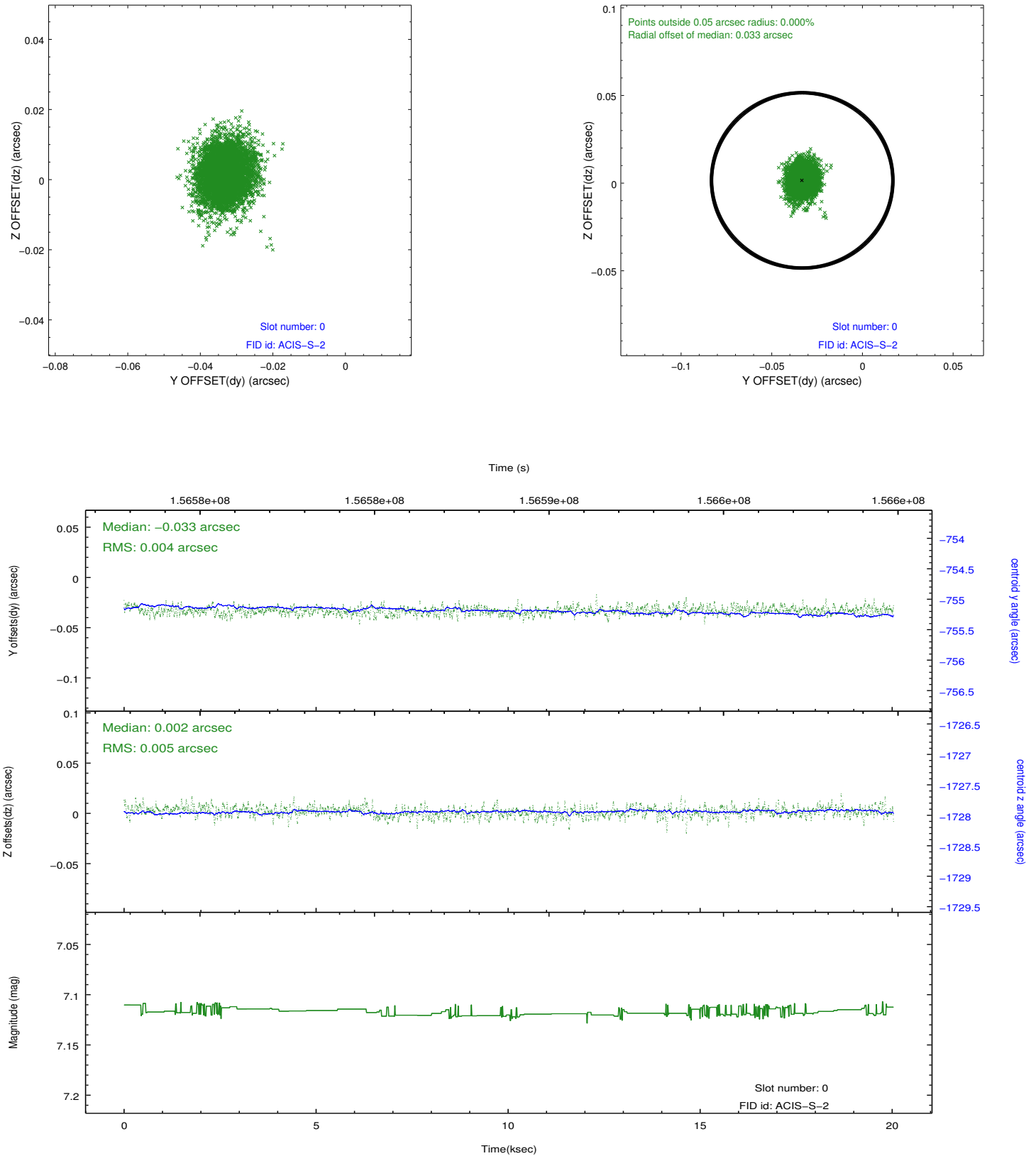


2.4.5 Slot 7

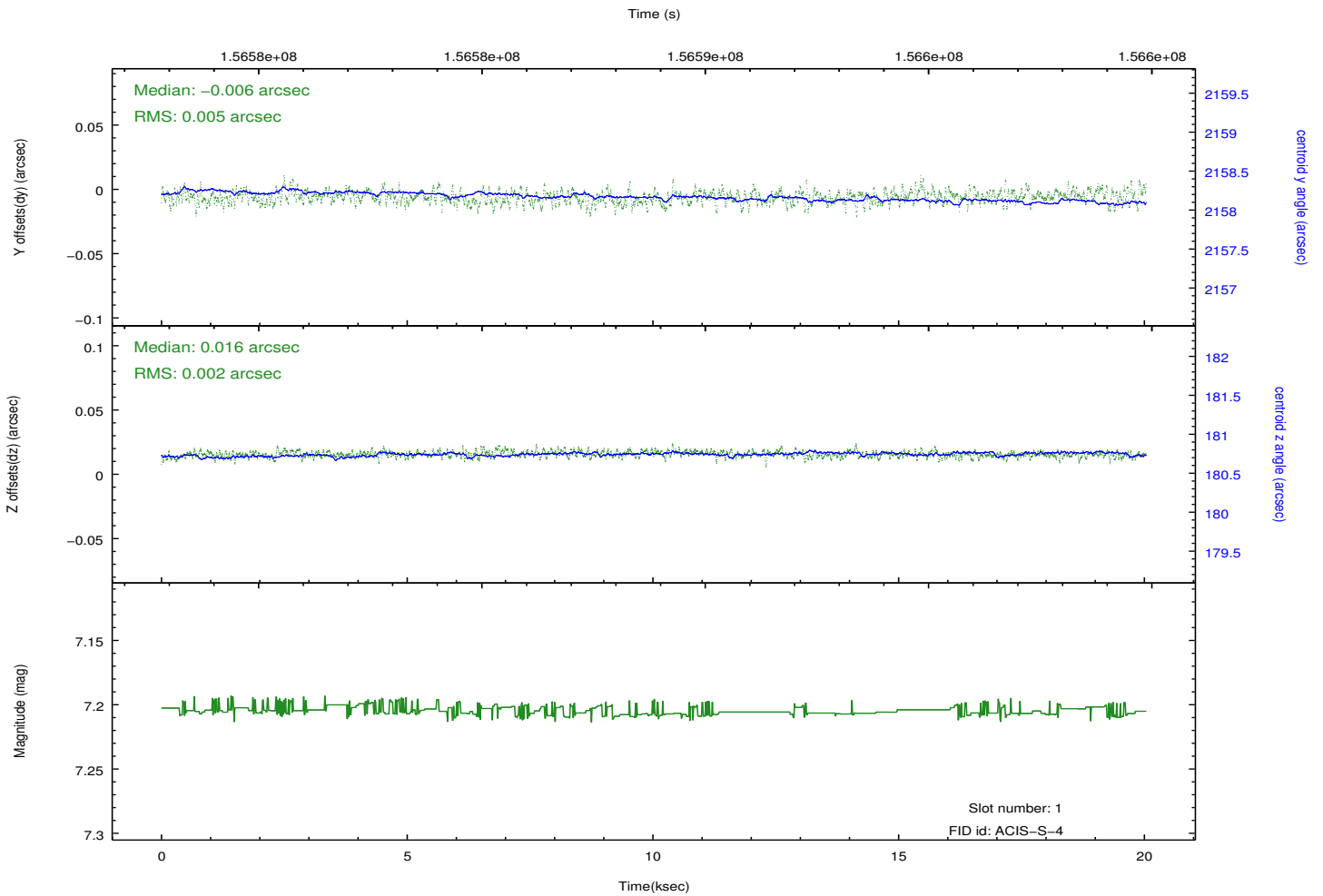
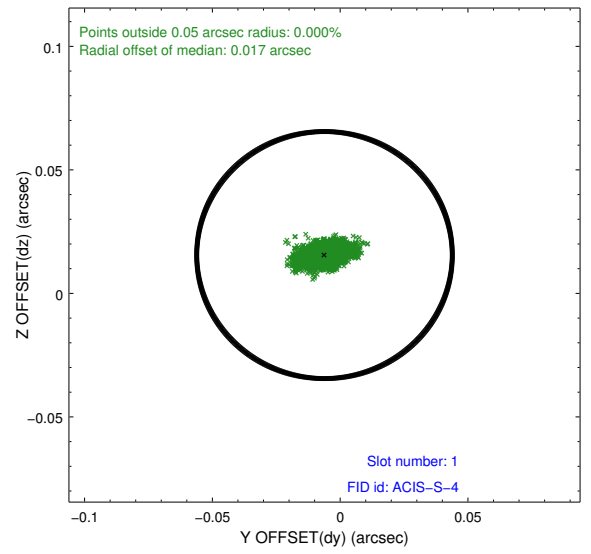
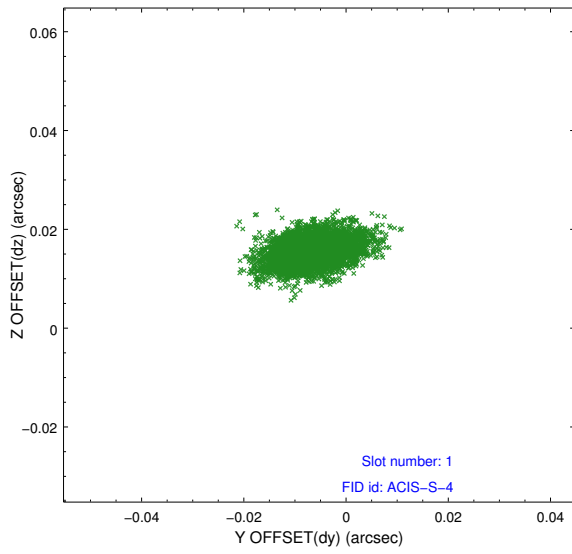


2.5 FID Slots

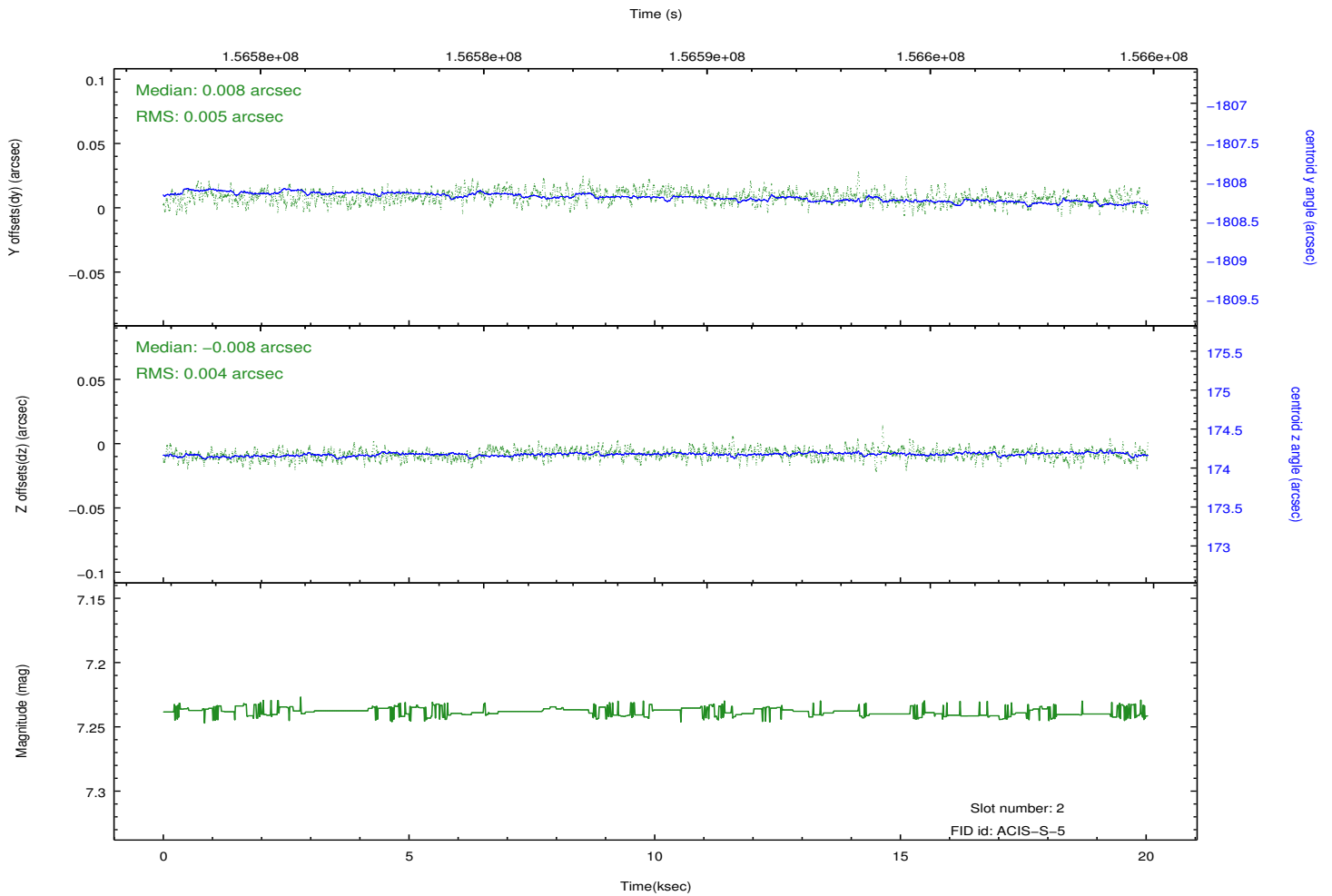
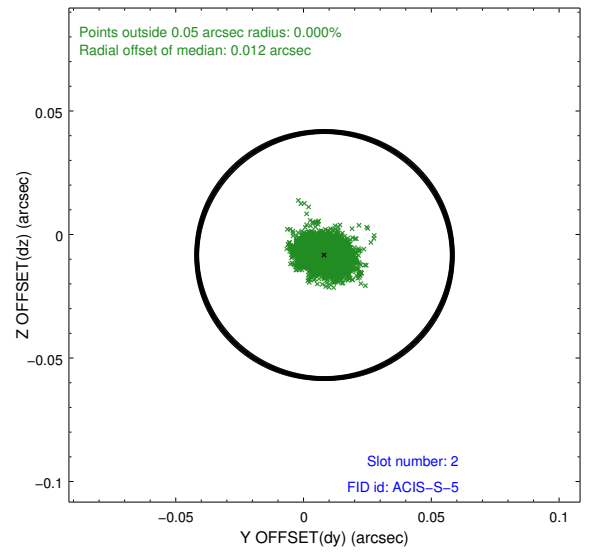
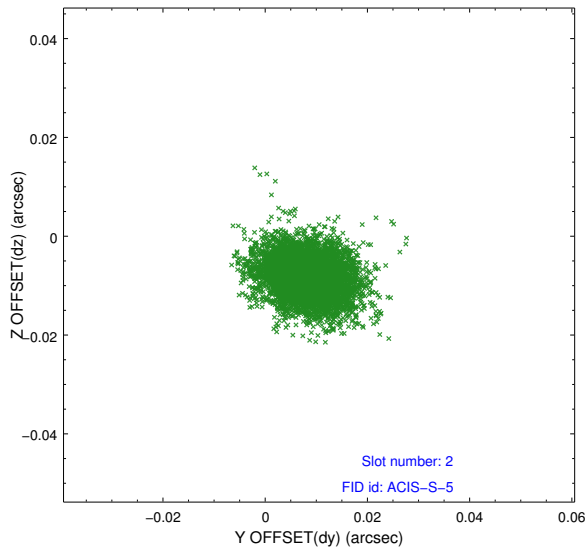
2.5.1 Slot 0



2.5.2 Slot 1



2.5.3 Slot 2



A Summary

A.1 Status

V&V Scientist	Jen Lauer
V&V Date (YYYY-MM-DD)	2012.10.31
V&V Edition	1
V&V Disposition and Status	OK
V&V Charge Time	20.029

A.2 Comments