

# V&V Reference Report

## L2 ASCDS Version : 8.4.5

Observation 3751 - L2 Version 3  
Chandra X-Ray Center

L2 Processing Date : Nov 8 2012

## Contents

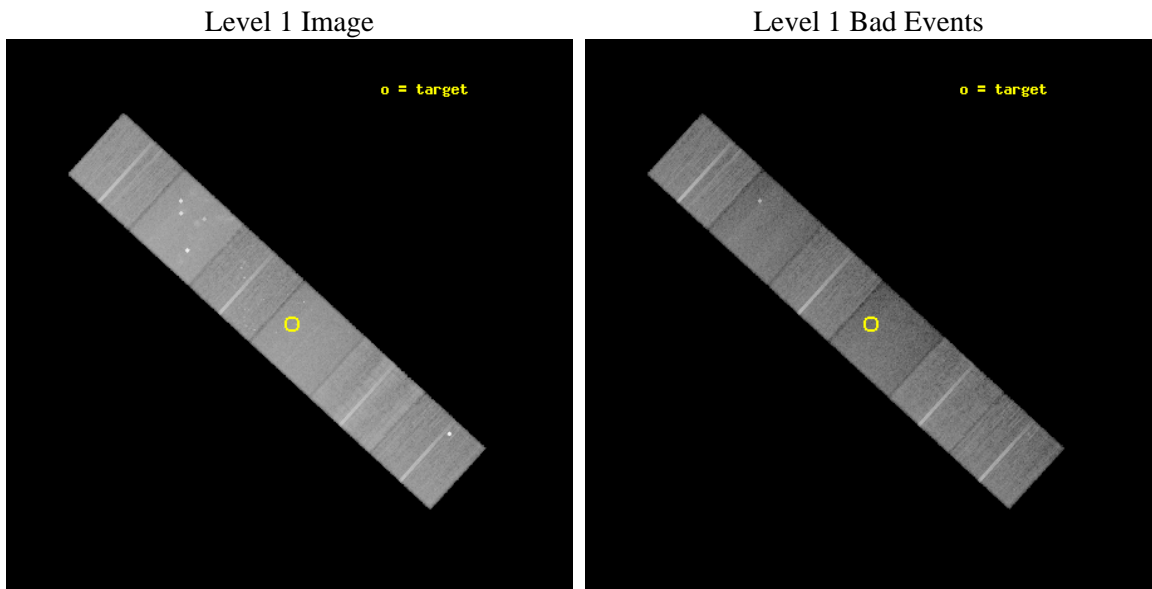
<b>1</b>	<b>Front</b>	<b>2</b>
<b>2</b>	<b>OBI</b>	<b>3</b>
2.1	OBI . . . . .	3
2.1.1	Images . . . . .	3
2.1.2	Bias . . . . .	3
2.1.3	Parameters . . . . .	4
2.1.4	Events . . . . .	4
2.2	Compared Parameters . . . . .	5
2.3	Aspect . . . . .	6
2.4	Star Slots . . . . .	9
2.4.1	Slot 3 . . . . .	9
2.4.2	Slot 4 . . . . .	10
2.4.3	Slot 5 . . . . .	11
2.4.4	Slot 6 . . . . .	12
2.5	FID Slots . . . . .	13
2.5.1	Slot 0 . . . . .	13
2.5.2	Slot 1 . . . . .	14
2.5.3	Slot 2 . . . . .	15
<b>A</b>	<b>Summary</b>	<b>16</b>
A.1	Status . . . . .	16
A.2	Comments . . . . .	16



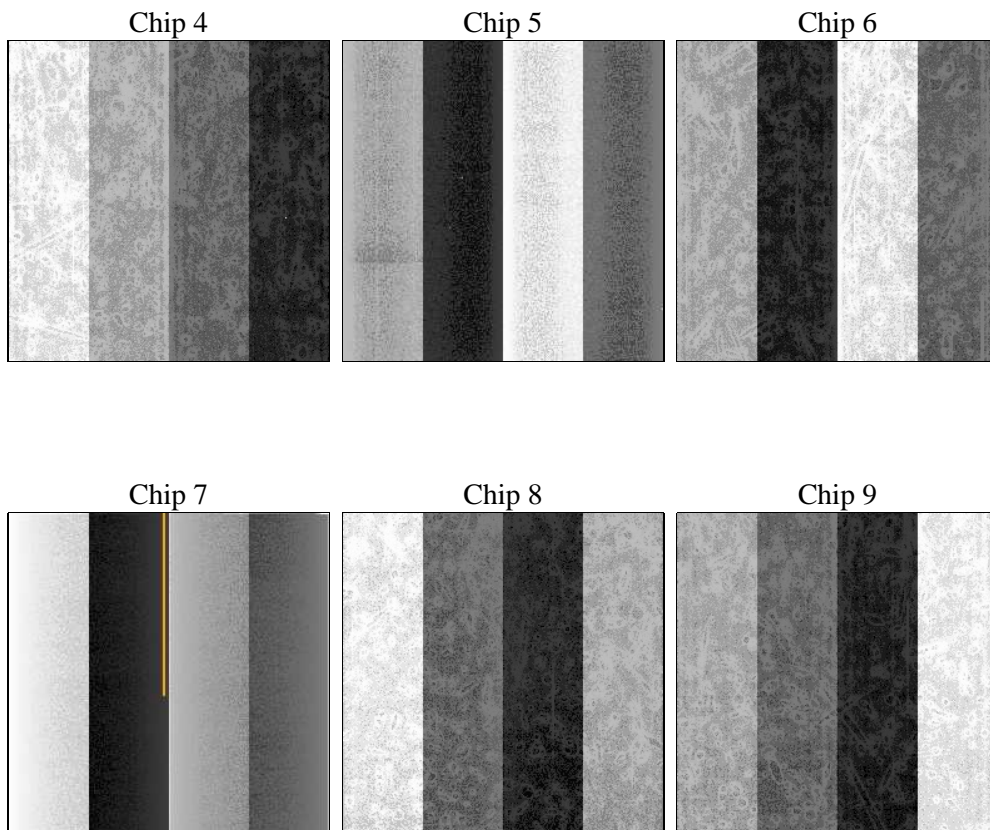
## 2 OBI

### 2.1 OBI

#### 2.1.1 Images



#### 2.1.2 Bias



### 2.1.3 Parameters

obi_num	0	Obi number	sched_exp_time	38000.000000	[s] Scheduled observation exposure time
ascdsver	8.4.5	Processing system revision	ontime	38022.399858356	Sum of GTIs [s]
caldsver	4.5.2	&#160	ontime4	38022.399858356	Sum of GTIs [s]
date	2012-11-08T09:22:05	Date and time of file creation	ontime5	38022.399858356	Sum of GTIs [s]
revision	3	Processing version of data	ontime6	38022.399858356	Sum of GTIs [s]
			ontime7	38022.399858356	Sum of GTIs [s]
			ontime8	38022.399858356	Sum of GTIs [s]
			ontime9	38022.399858356	Sum of GTIs [s]
			l1events	1361295	Number of level 1 events

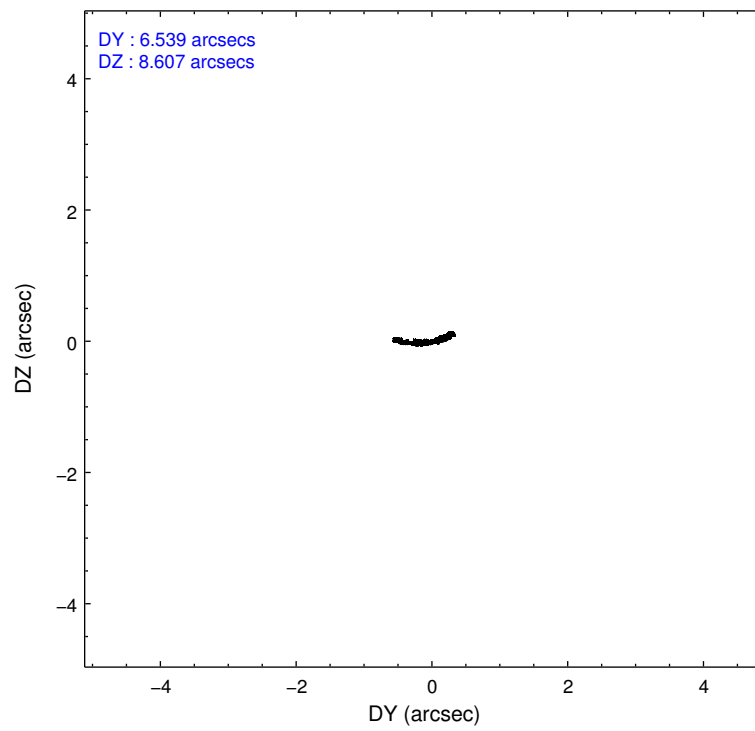
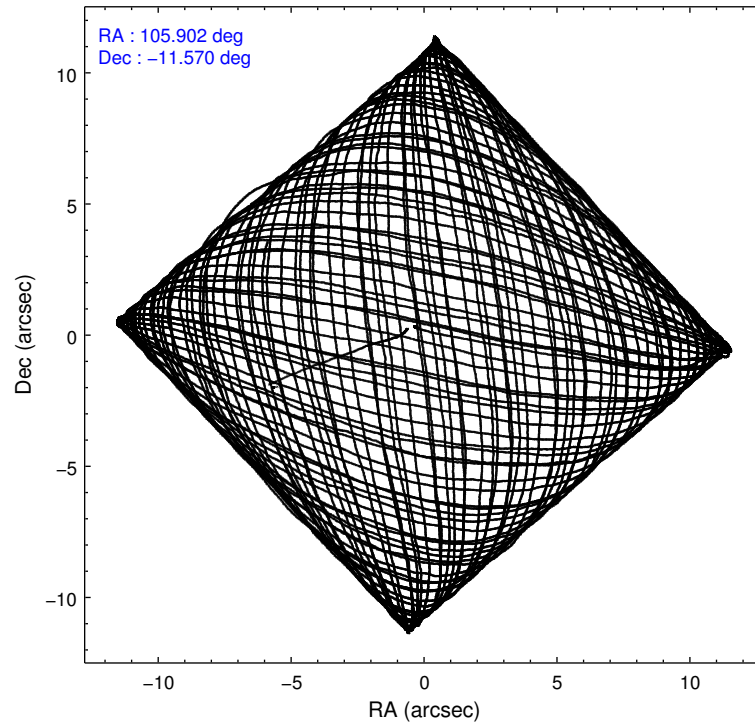
### 2.1.4 Events

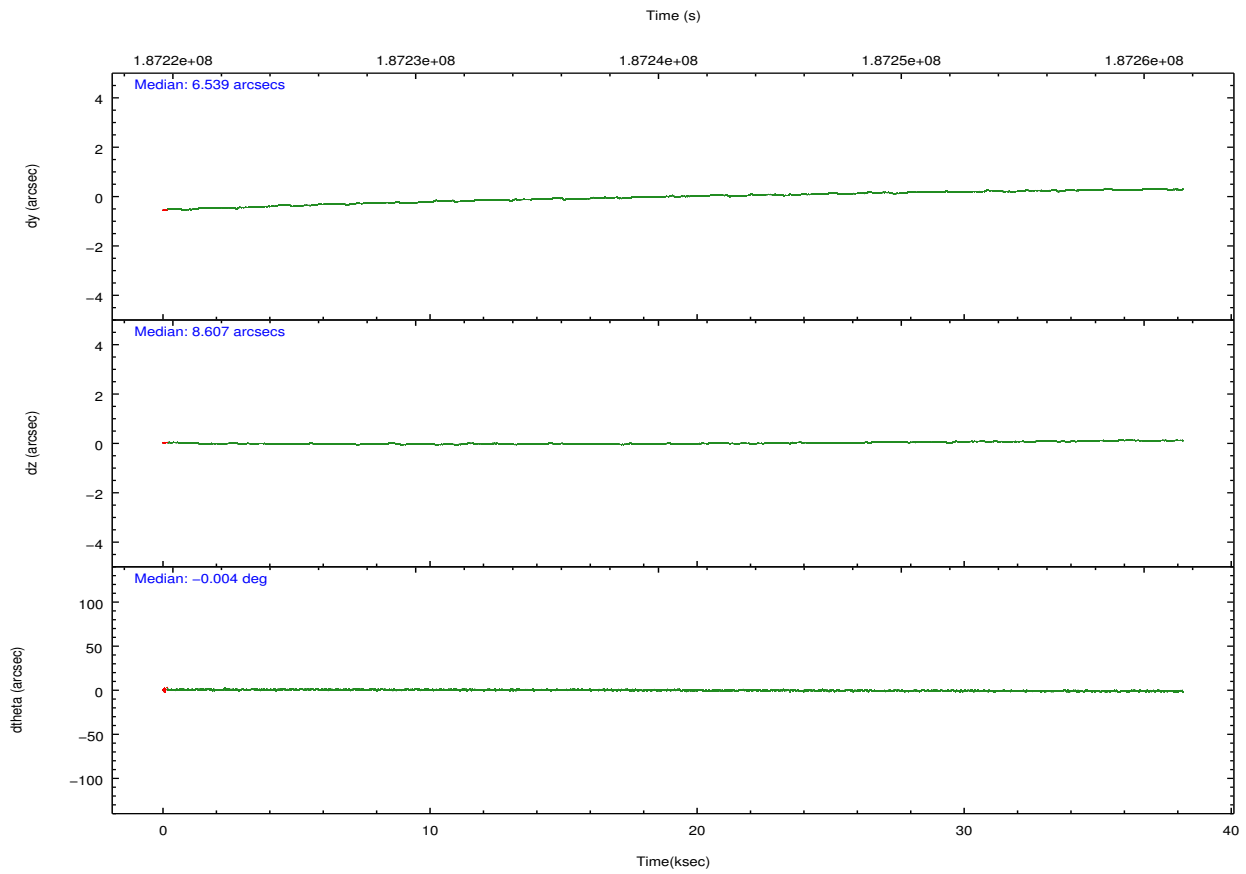
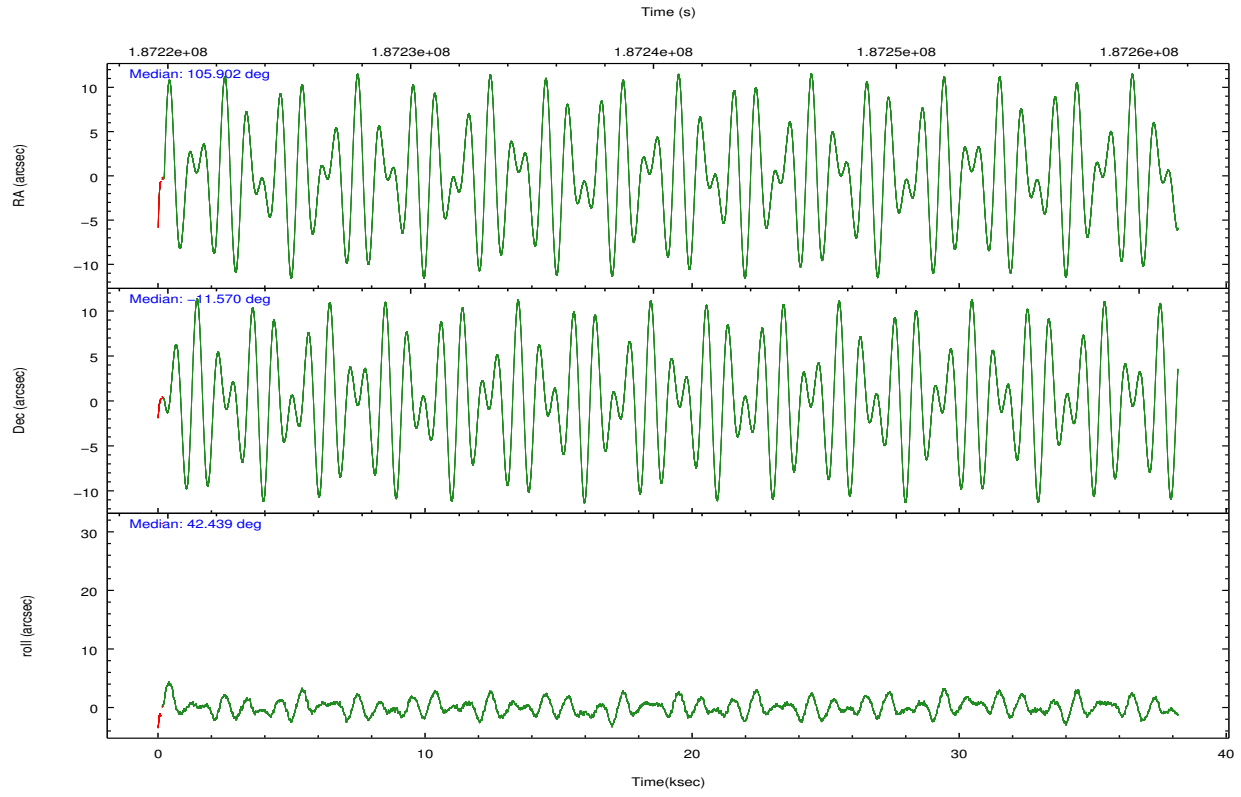
	ccd 4	ccd 5	ccd 6	ccd 7	ccd 8	ccd 9		ccd 4	ccd 5	ccd 6	ccd 7	ccd 8	ccd 9
level 1 events	217820	280436	196185	214998	255139	196717	grade 0 events	10098	25409	12555	9305	24955	19665
rejected events	195043	134368	170266	116514	185190	163842		4%	9%	6%	4%	9%	9%
rejected %	89%	47%	86%	54%	72%	83%	grade 1 events	191	233	101	189	219	126
								0%	0%	0%	0%	0%	0%
							grade 2 events	4994	41957	4843	19922	12818	4707
								2%	14%	2%	9%	5%	2%
							grade 3 events	2354	6781	2361	9437	9467	2459
								1%	2%	1%	4%	3%	1%
							grade 4 events	2261	6536	2319	9522	8773	2266
								1%	2%	1%	4%	3%	1%
							grade 5 events	7246	20773	7726	22211	10707	8377
								3%	7%	3%	10%	4%	4%
							grade 6 events	3509	68210	4304	52309	15239	4471
								1%	24%	2%	24%	5%	2%
							grade 7 events	187167	110537	161976	92103	172961	154646
								85%	39%	82%	42%	67%	78%

## 2.2 Compared Parameters

Parameter	Planned	Actual	Parameter	Planned	Actual
Instrument	ACIS	ACIS	Obspar format version number	7	7
Detector	ACIS-456789	ACIS-456789	Obspar file type	PREDICTED	ACTUAL
Grating	NONE	NONE	Obspar update status	NONE	UPDATED
Data mode	VFAINT	VFAINT	Number of optional ACIS chips dropped	0	0
Observation mode	POINTING	POINTING	On-chip summing requested	N	N
[deg] Pointing RA	105.894478	105.9025121263834	Subarray requested	NONE	NONE
[deg] Pointing Dec	-11.596143	-11.57006558554034	Alternating exposures requested	N	N
[deg] Pointing Roll	42.289704	42.44793997785524	[s] Primary exposure time	0.000000	3.2
[mm] SIM focus pos	-0.684267	-0.6828225247311905			
[mm] SIM defocus	0	0.001444936568705701			
[mm] SIM translation stage pos	-190.132523	-190.1425803651734			
[mm] SIM translation stage offset	0	0.01005778216563158			
[s] Observation start time (MET)	187221696.184000	187220336.04499			
Observation start date	2003-12-07T22:00:32	2003-12-07T21:38:56			
[s] Observation end time (MET)	187259696.184000	187260214.69672			
Observation end date	2003-12-08T08:33:52	2003-12-08T08:43:34			
Read mode	TIMED	TIMED			

## 2.3 Aspect





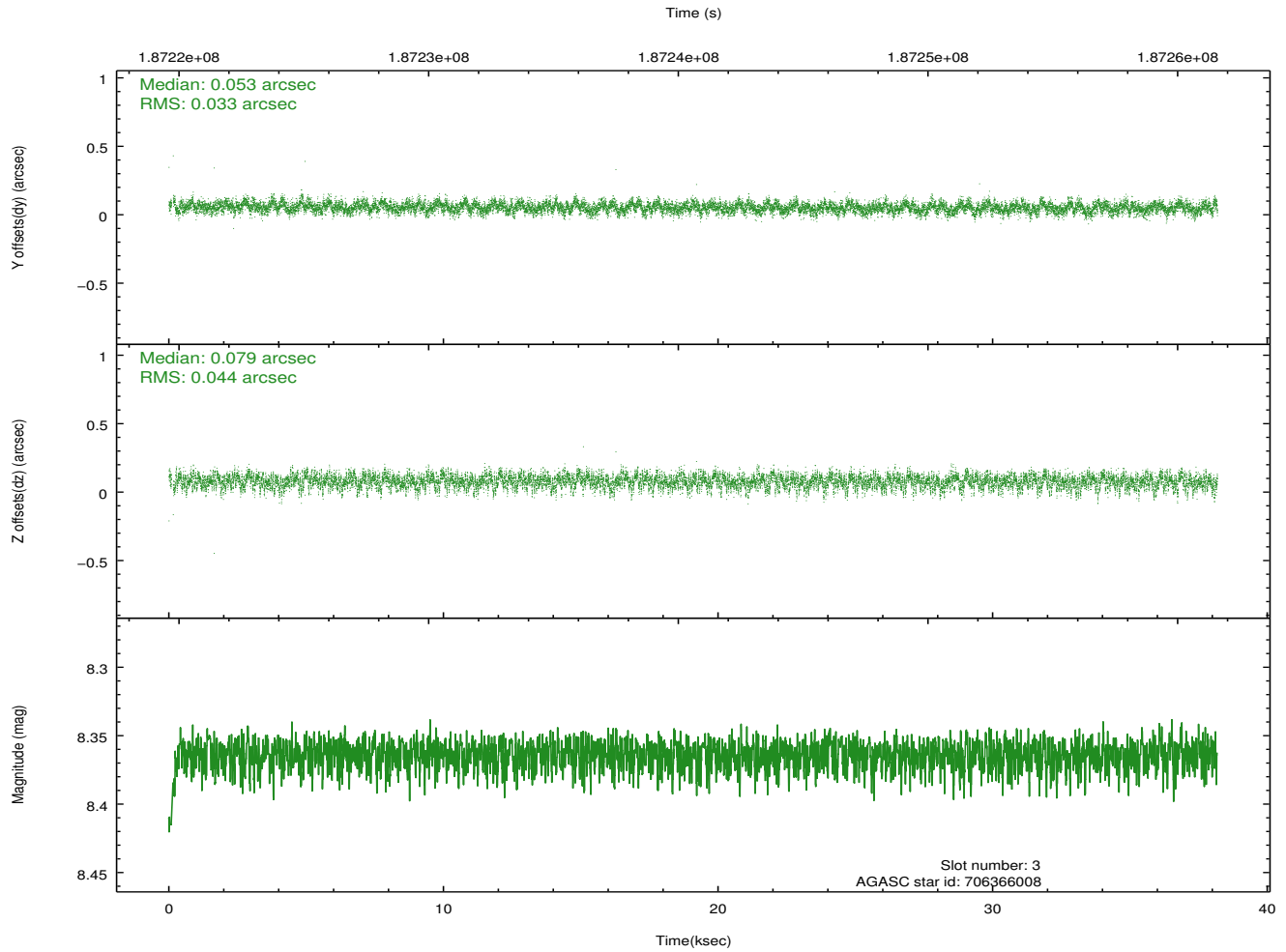
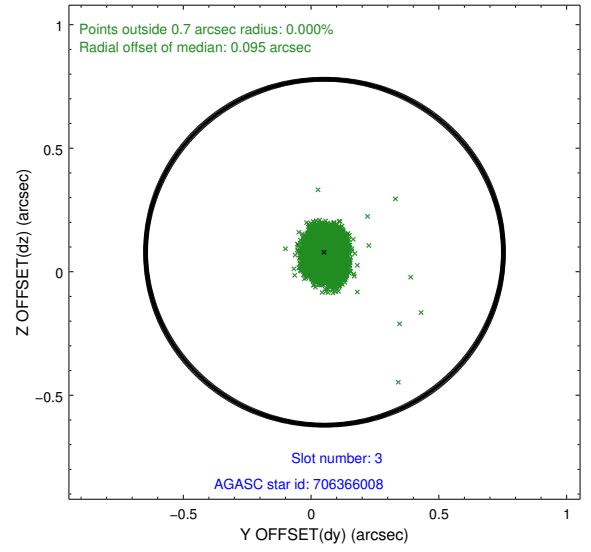
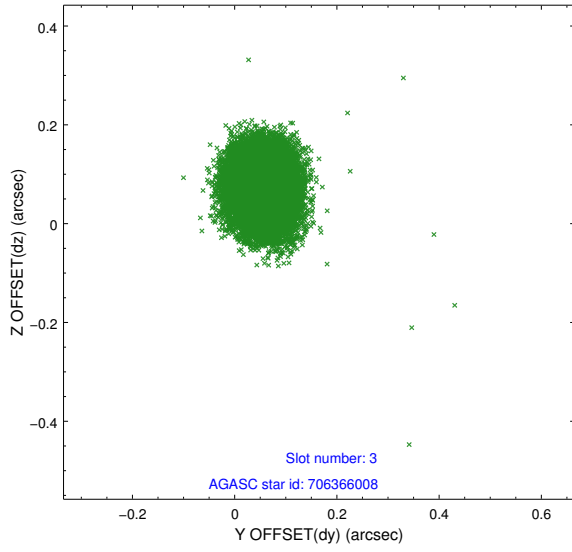
### Slot Statistics

	status	id	mag	n_pts	med_dy	med_dz	dr1
	FID	ACIS-S-1	7.19	9299	0.066	-0.015	0.009
	FID	ACIS-S-2	7.11	9299	-0.040	-0.028	0.007
	FID	ACIS-S-5	7.23	9299	-0.050	0.049	0.009
	GUIDE	706366008	8.36	18596	0.053	0.079	0.058
	GUIDE	705836888	8.54	18597	0.103	-0.272	0.058
	GUIDE	706348312	8.05	18598	-0.052	0.045	0.063
	GUIDE	706356824	8.86	18593	-0.102	0.151	0.073
0.000	0.000	0.000	0.000000	0.000000	0.00	0.00	

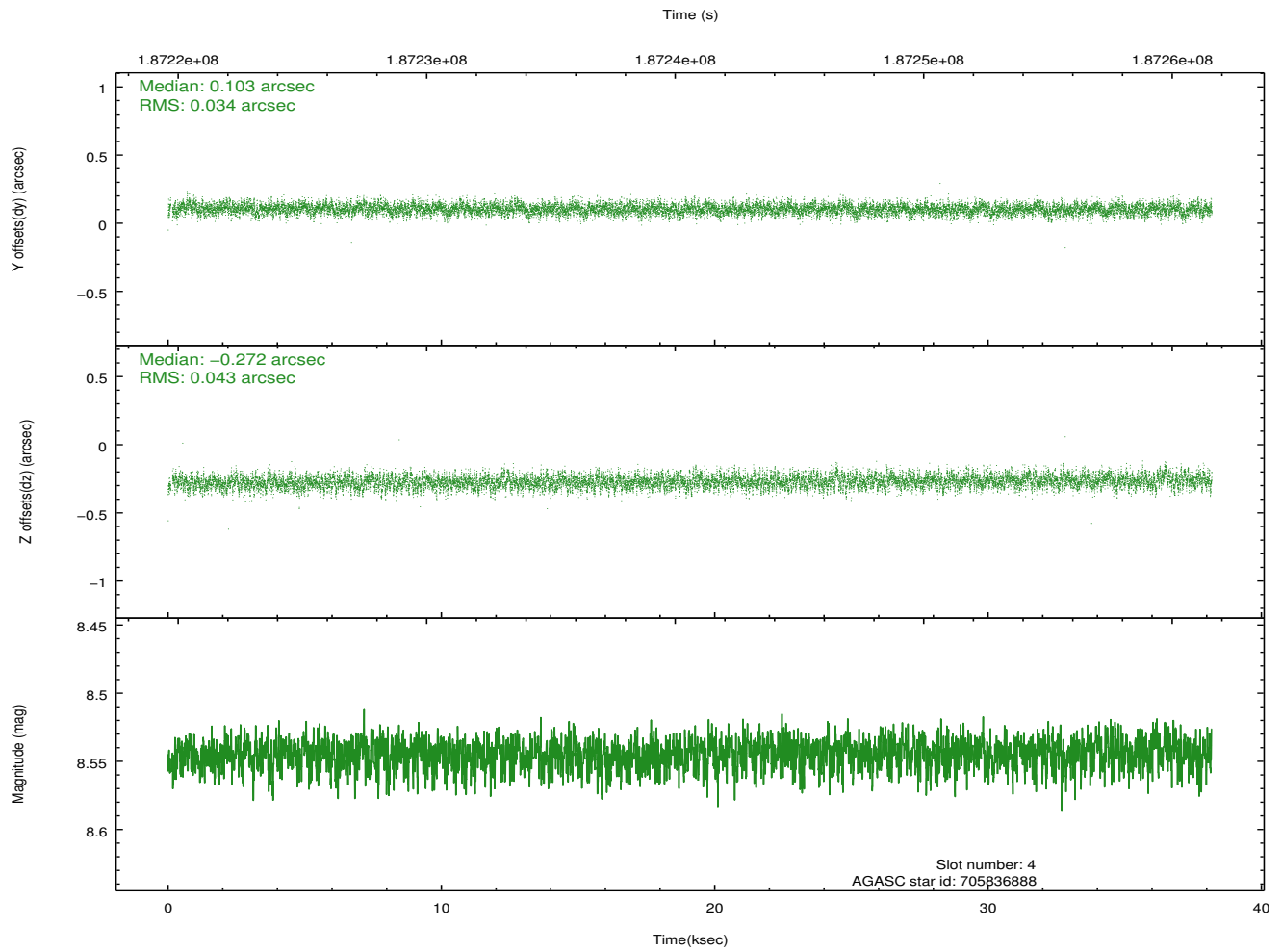
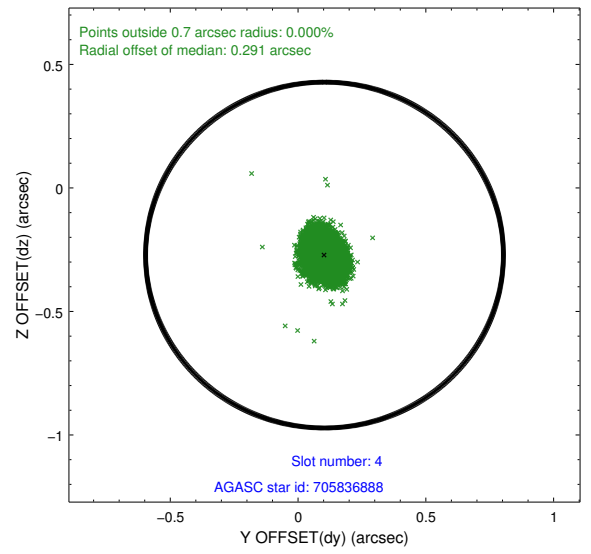
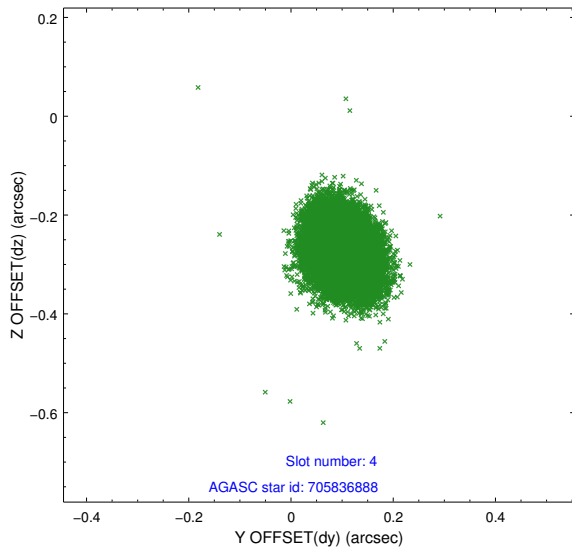
∞

## 2.4 Star Slots

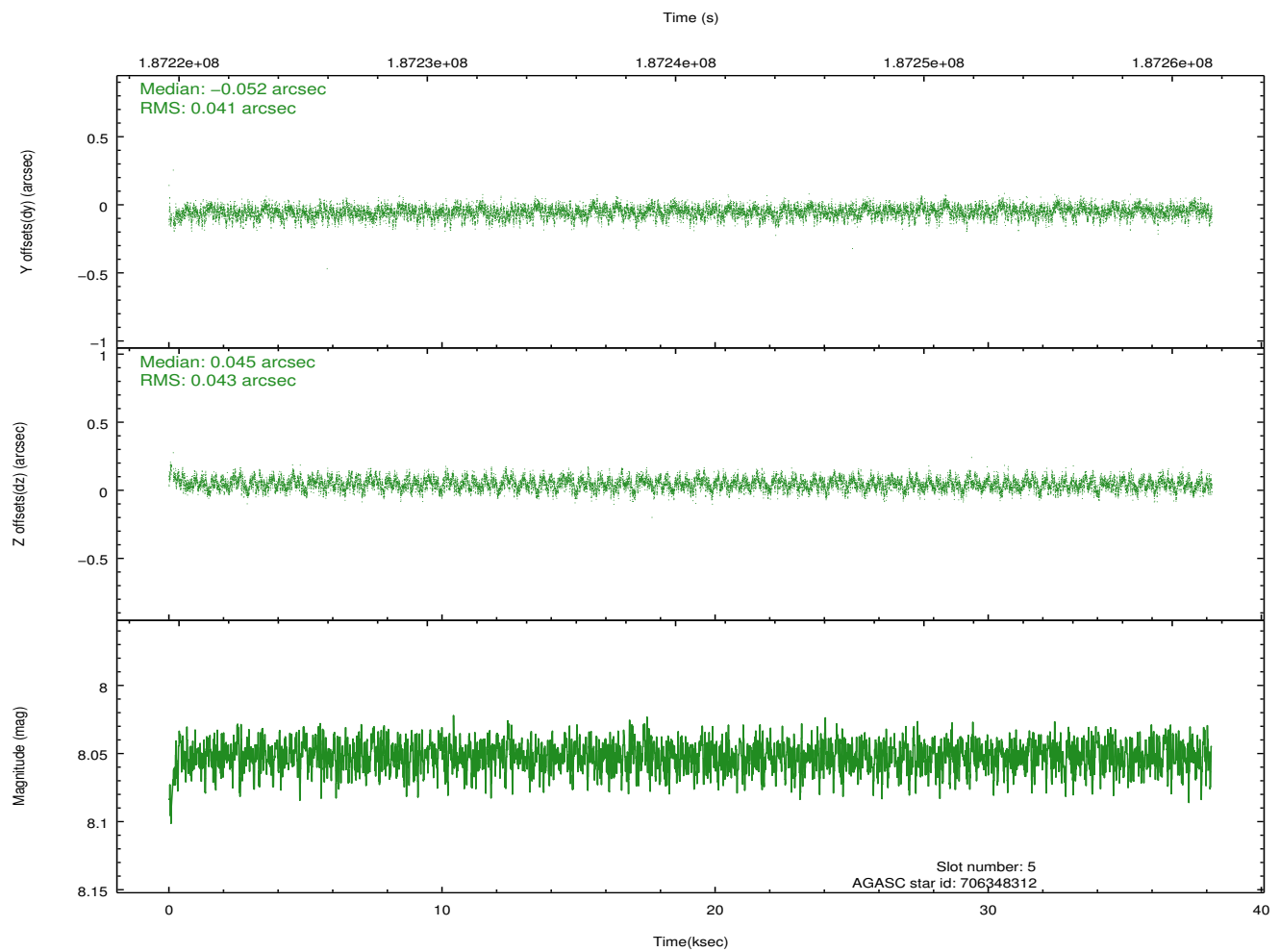
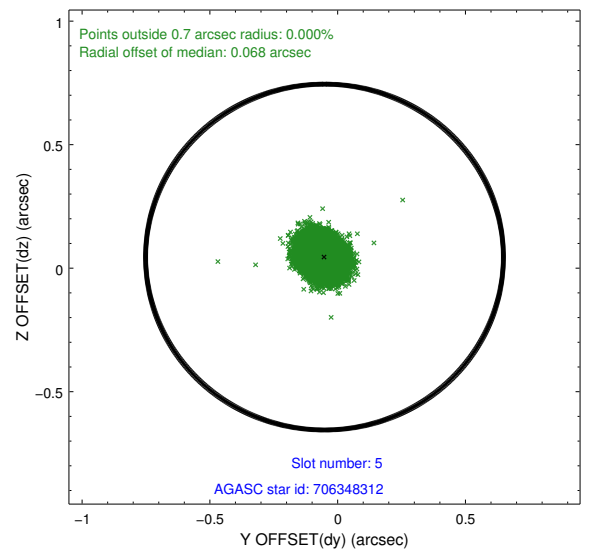
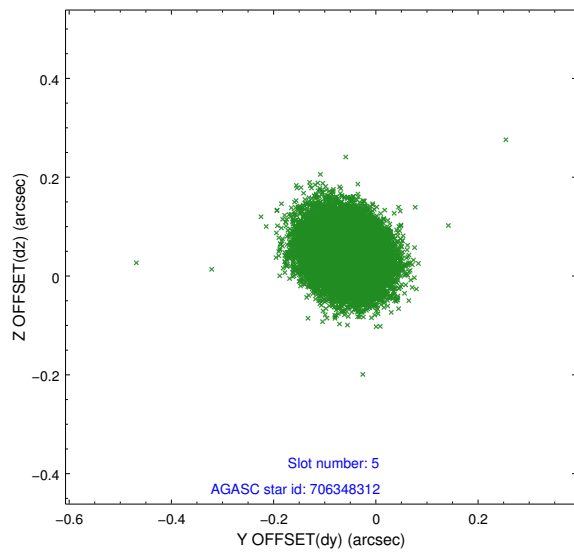
### 2.4.1 Slot 3



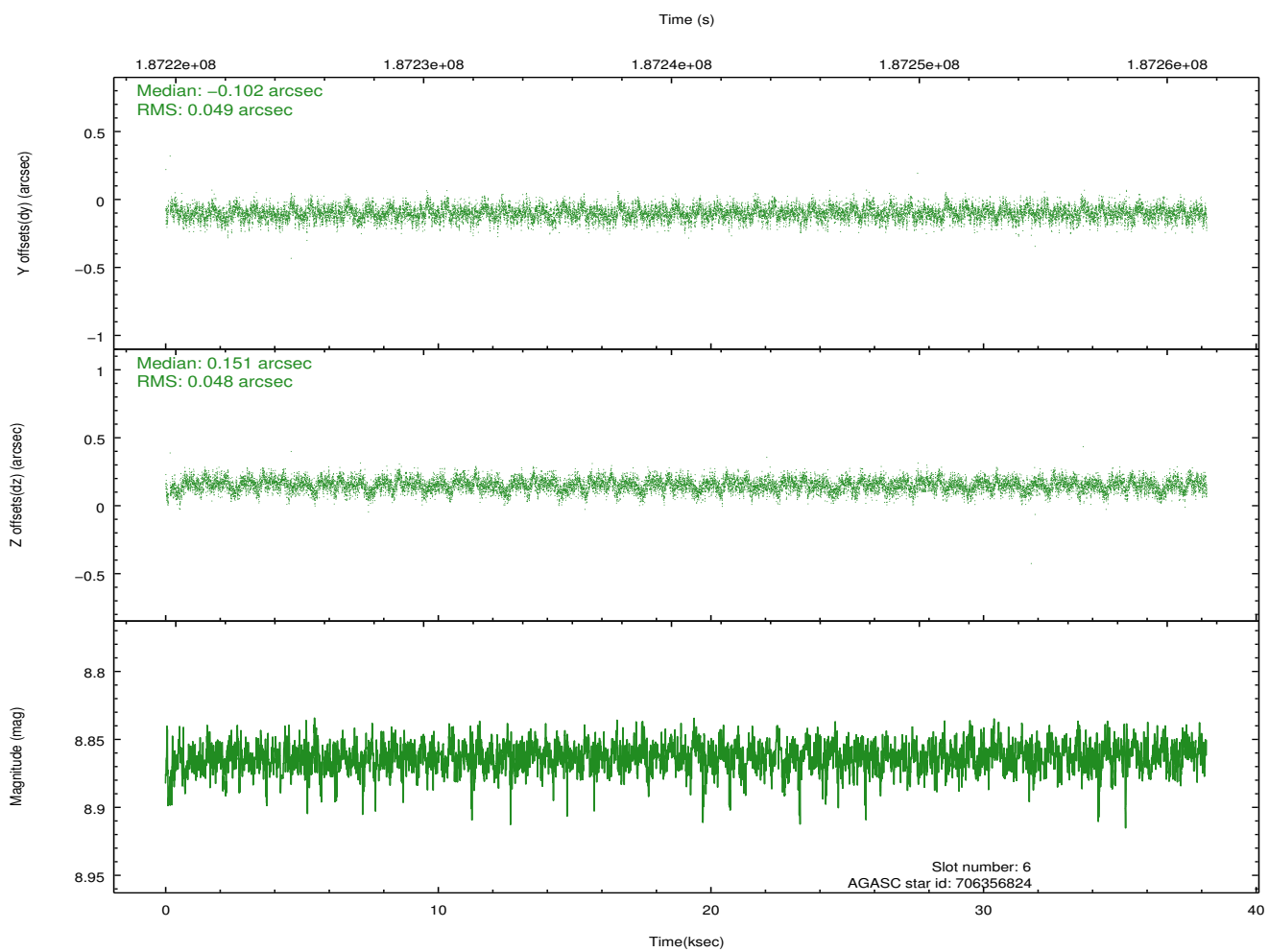
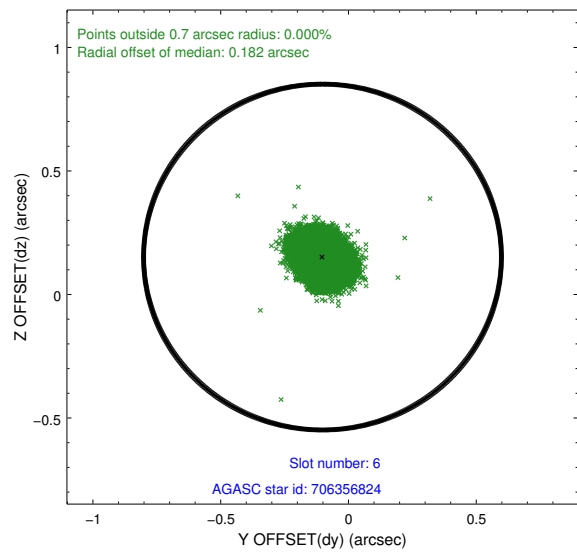
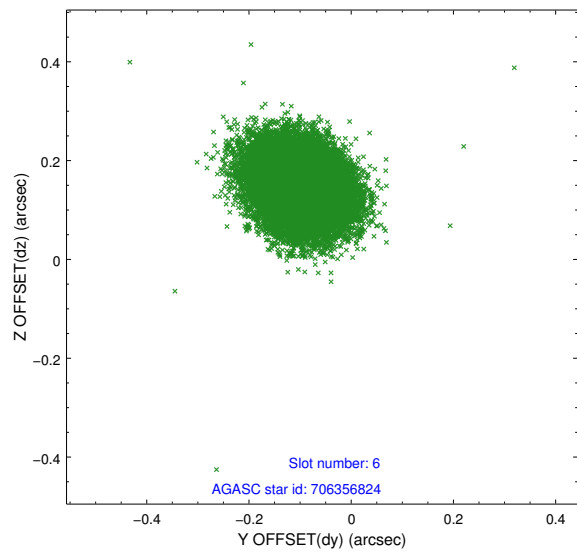
### 2.4.2 Slot 4



### 2.4.3 Slot 5

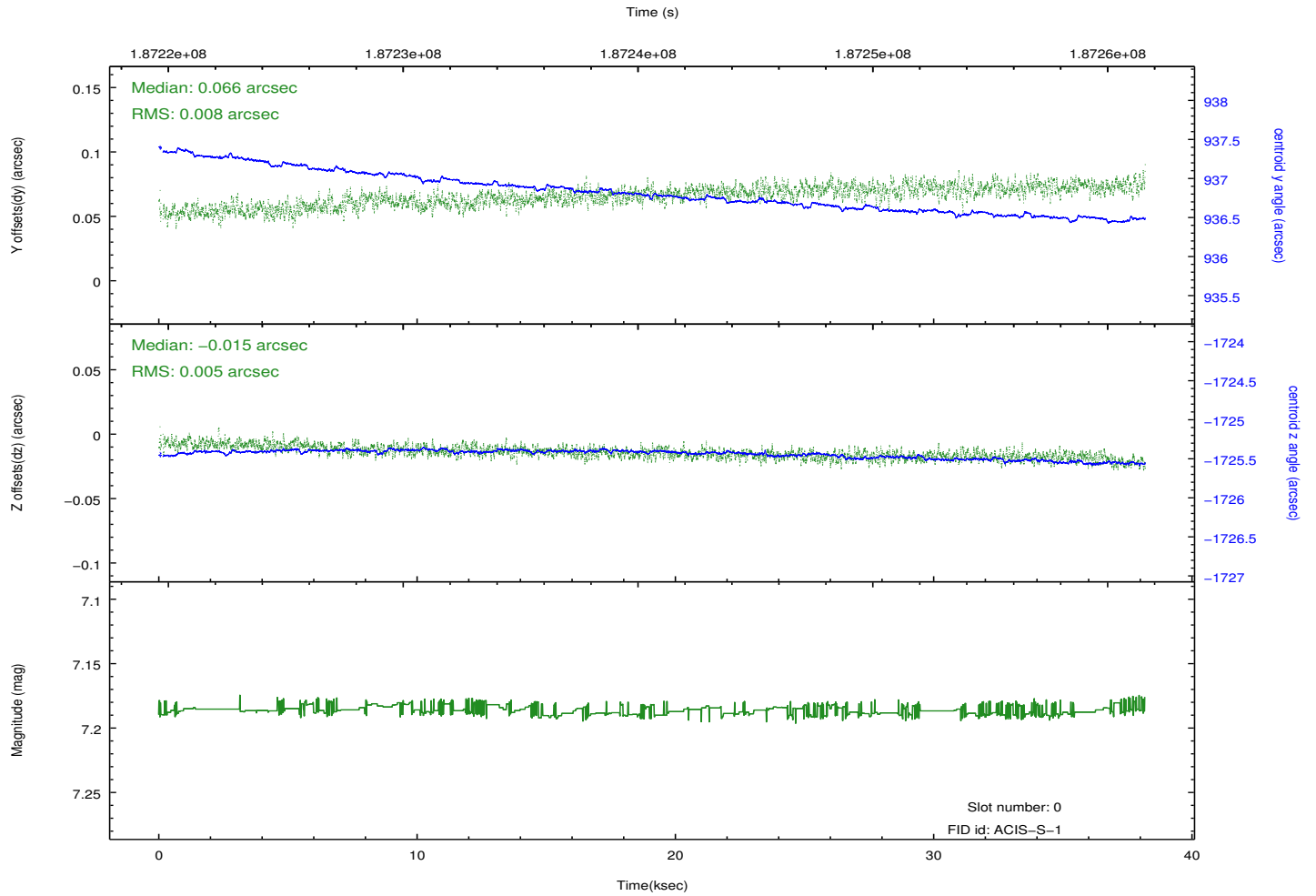
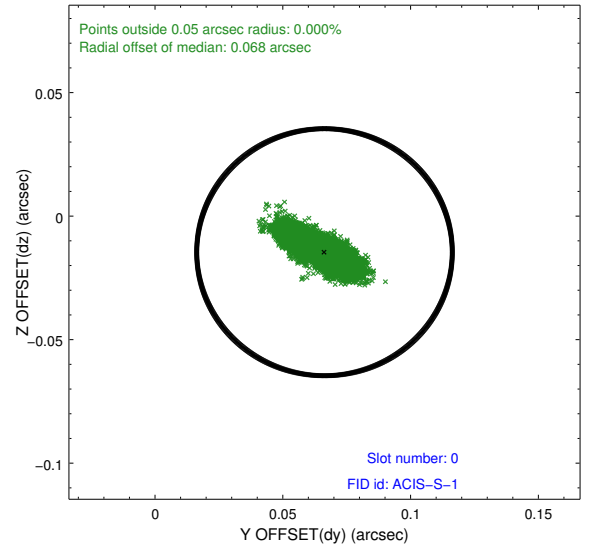
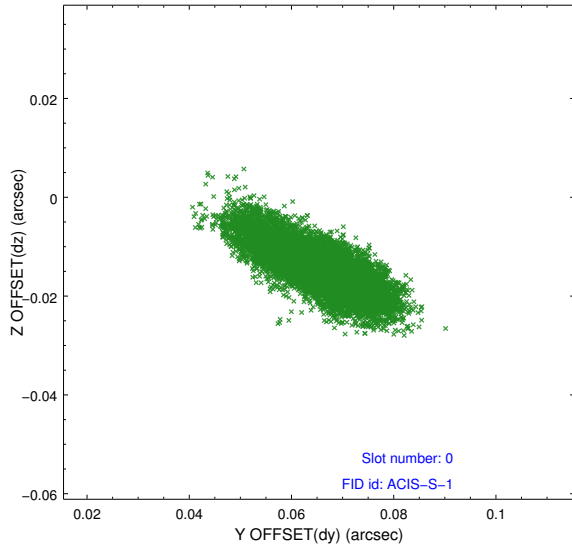


### 2.4.4 Slot 6

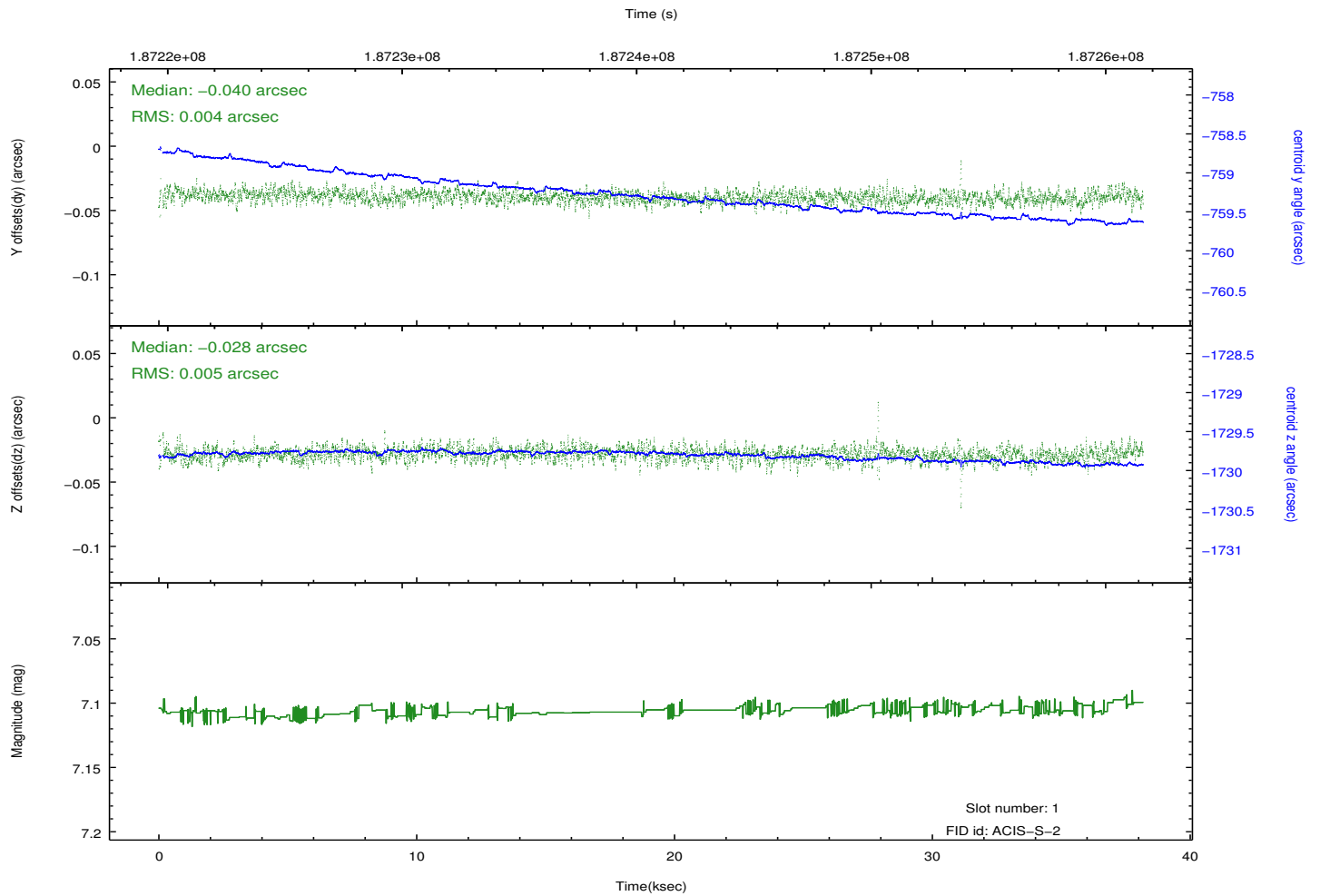
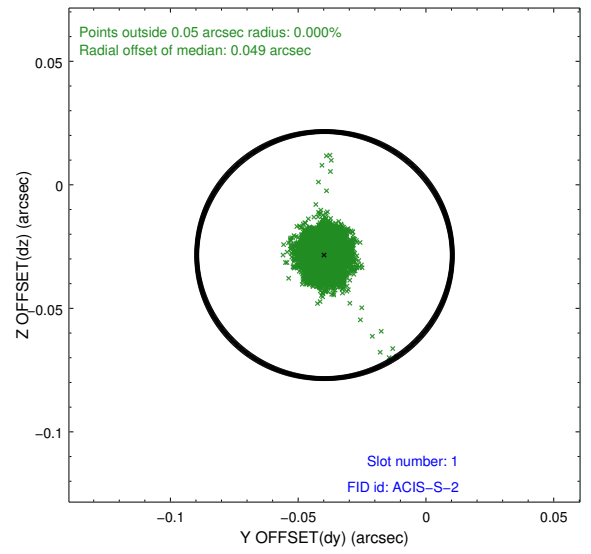
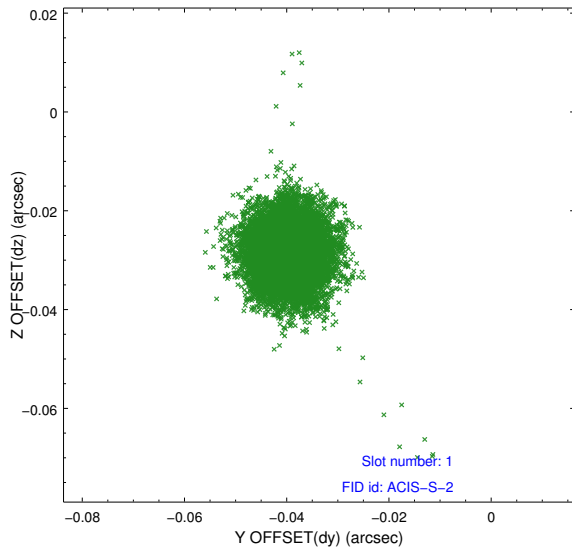


## 2.5 FID Slots

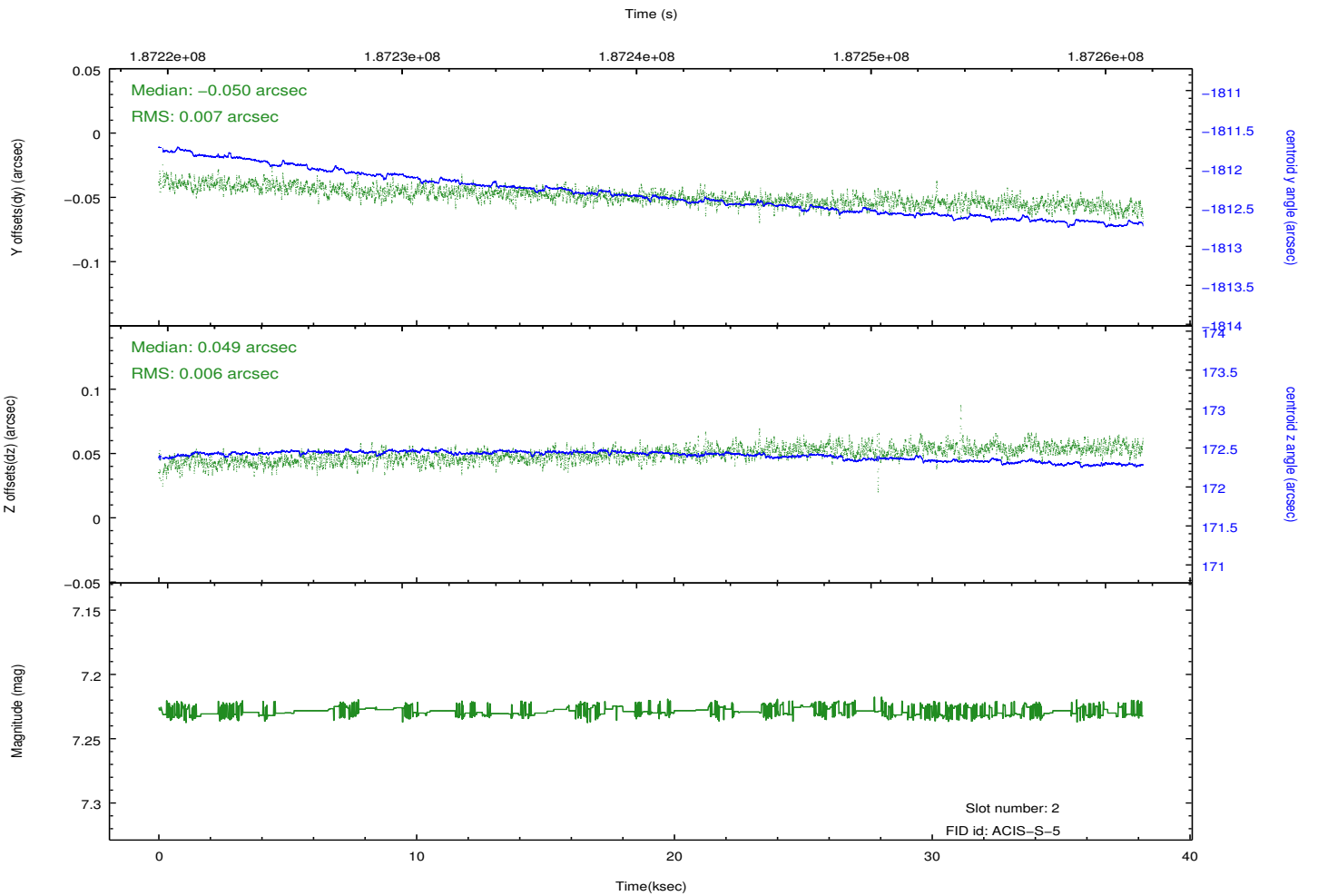
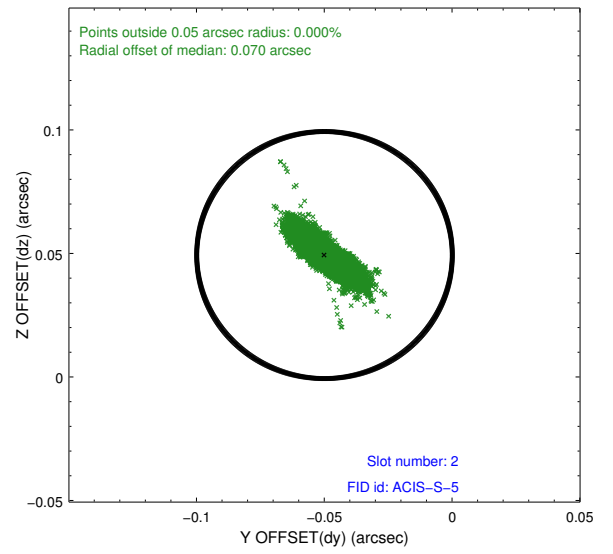
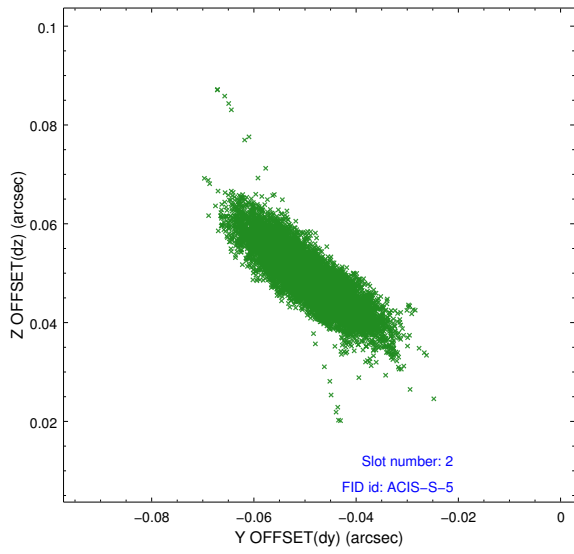
### 2.5.1 Slot 0



## 2.5.2 Slot 1



### 2.5.3 Slot 2



# A Summary

## A.1 Status

V&V Scientist	Jen Lauer
V&V Date (YYYY-MM-DD)	2012.12.02
V&V Edition	1
V&V Disposition and Status	OK
V&V Charge Time	38.022

## A.2 Comments

Roll preference met. Window preference not met.