

V&V Reference Report

L2 ASCDS Version : 8.4.5

Observation 3771 - L2 Version 3
Chandra X-Ray Center

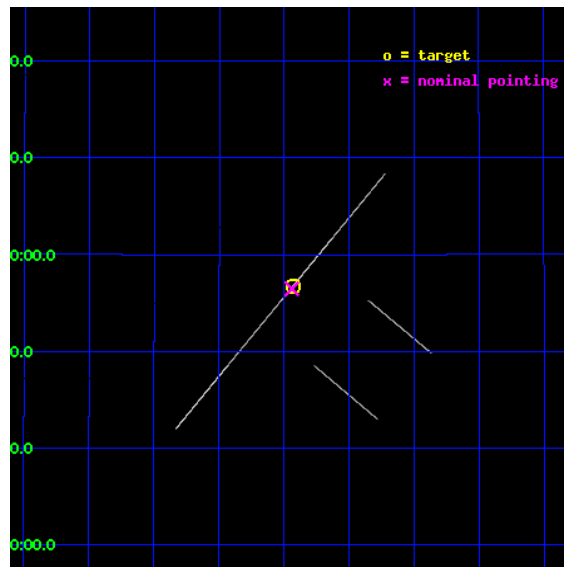
L2 Processing Date : Nov 8 2012

Contents

1	Front	2
2	OBI	3
2.1	OBI	3
2.1.1	Images	3
2.1.2	Bias	3
2.1.3	Parameters	4
2.1.4	Events	4
2.2	Compared Parameters	5
2.3	Aspect	6
2.4	Star Slots	9
2.4.1	Slot 3	9
2.4.2	Slot 4	10
2.4.3	Slot 5	11
2.4.4	Slot 6	12
2.4.5	Slot 7	13
2.5	FID Slots	14
2.5.1	Slot 0	14
2.5.2	Slot 1	15
2.5.3	Slot 2	16
A	Summary	17
A.1	Status	17
A.2	Comments	17

1 Front

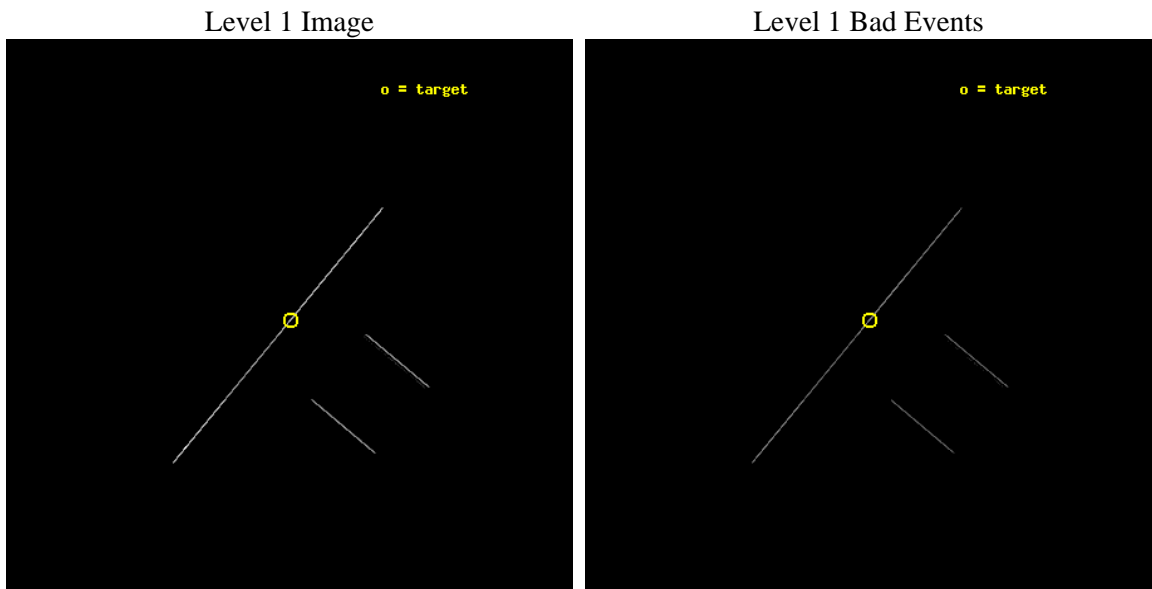
seq_num	300096	Sequence number
obs_id	3771	Observation id
title	TIMING THE ORBIT OF RX J1914.4+2456: GRAVITATIONAL RADIATION AND THE NATURE OF THE X-RAY EMISSION	Proposal title
observer	Dr. Tod Strohmayer	Principal investigator
object	RX J1914.4+2456	Source name
ra_targ	288.60875	Observer's specified target RA [deg]
dec_targ	24.945444	Observer's specified target Dec [deg]
ra_nom	288.61013374958	Nominal RA [deg]
dec_nom	24.941299270514	Nominal Dec [deg]
roll_nom	309.70375452591	Nominal Roll [deg]
revision	3	Processing version of data
ontime	11256.75	Sum of GTIs [s]
livetime	11212.778320312	Livetime [s]
ontime2	11256.75	Sum of GTIs [s]
ontime3	11256.75	Sum of GTIs [s]
ontime5	11256.75	Sum of GTIs [s]
ontime6	11256.75	Sum of GTIs [s]
ontime7	11256.75	Sum of GTIs [s]
ontime8	11256.75	Sum of GTIs [s]
l2events	105985	Number of level 2 events



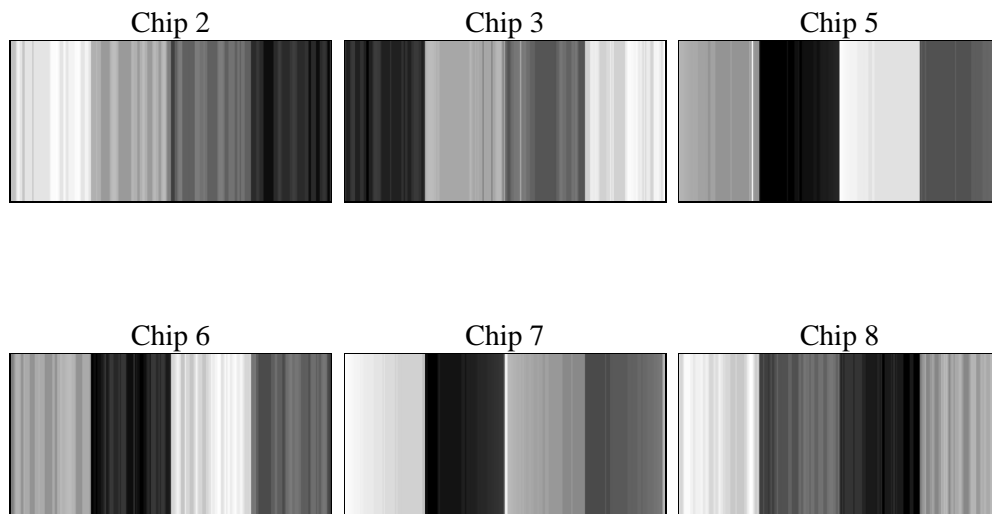
2 OBI

2.1 OBI

2.1.1 Images



2.1.2 Bias



2.1.3 Parameters

obi_num	1	Obi number	sched_exp_time	10288.000000	[s] Scheduled observation exposure time
ascdsver	8.4.5	Processing system revision	ontime	11256.75	Sum of GTIs [s]
caldbver	4.5.2	 	ontime2	11256.75	Sum of GTIs [s]
date	2012-11-08T03:07:06	Date and time of file creation	ontime3	11256.75	Sum of GTIs [s]
revision	3	Processing version of data	ontime5	11256.75	Sum of GTIs [s]
			ontime6	11256.75	Sum of GTIs [s]
			ontime7	11256.75	Sum of GTIs [s]
			ontime8	11256.75	Sum of GTIs [s]
			l1events	190082	Number of level 1 events

2.1.4 Events

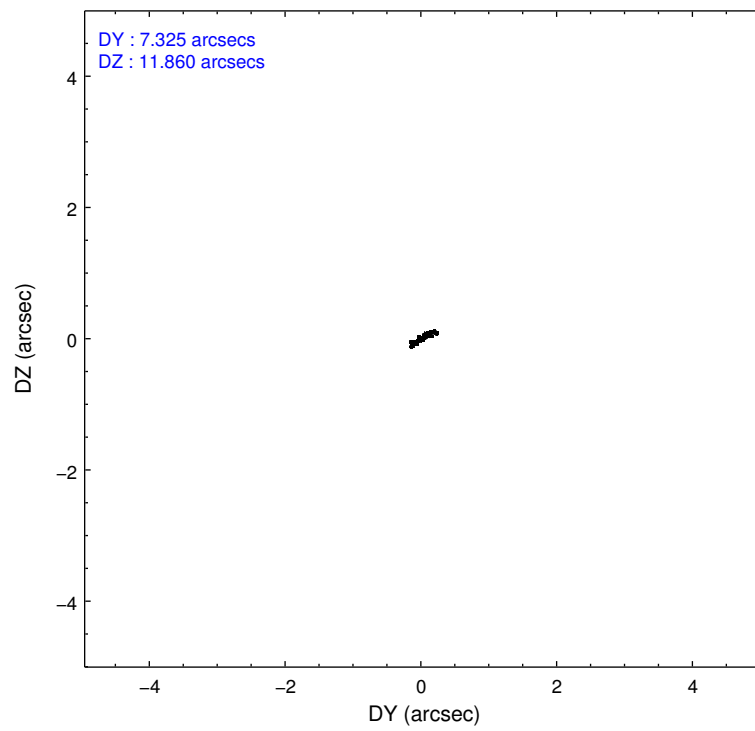
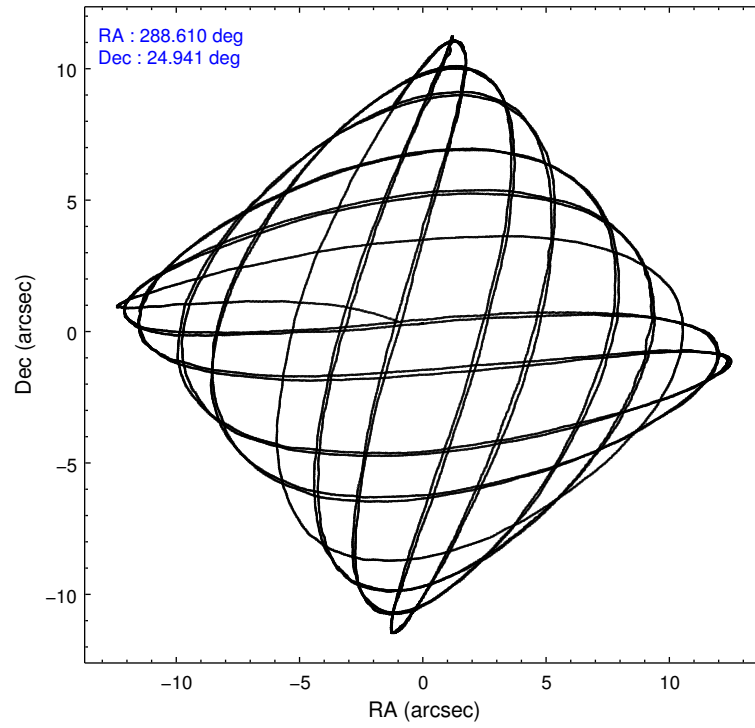
	ccd 2	ccd 3	ccd 5	ccd 6	ccd 7	ccd 8
level 1 events	11454	12625	67278	12776	40870	45079
rejected events	2062	2418	5760	2551	6747	3961
rejected %	18%	19%	8%	19%	16%	8%

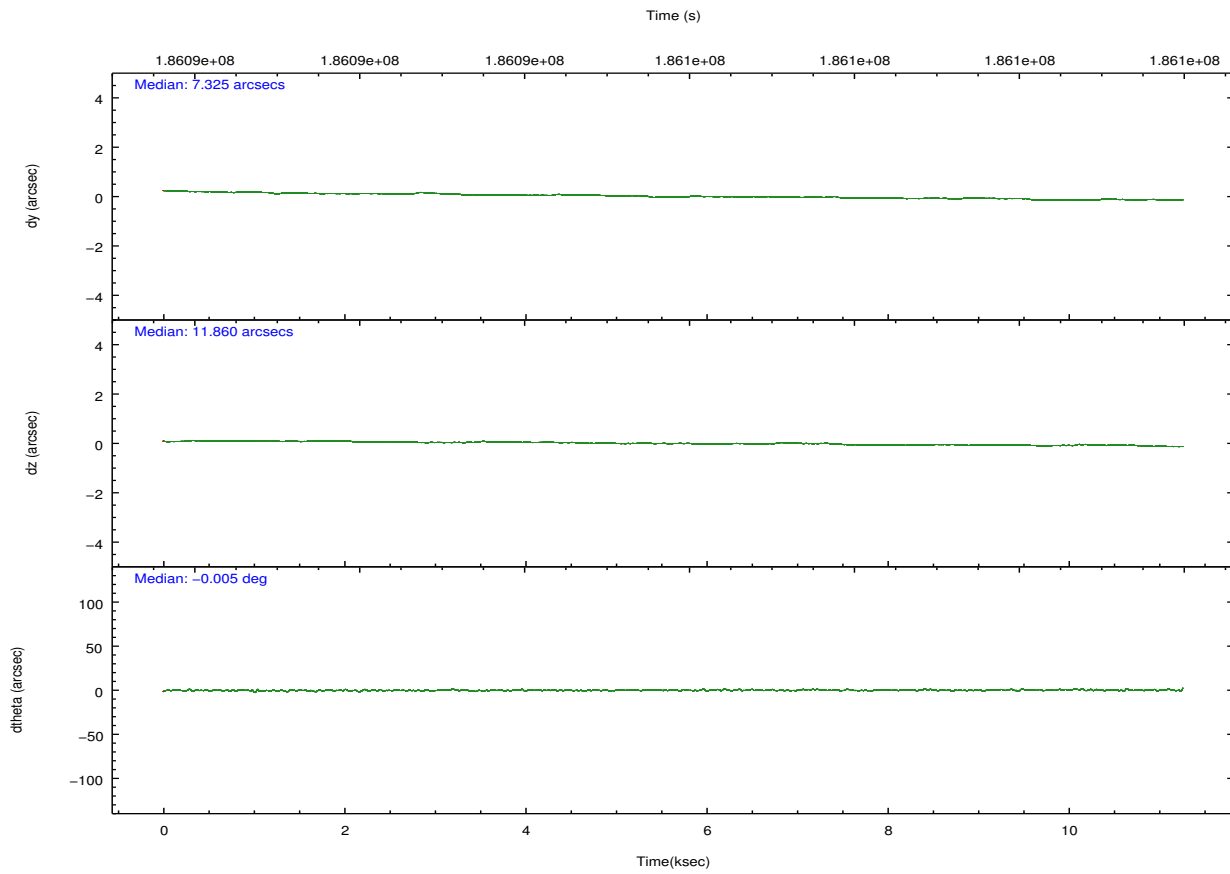
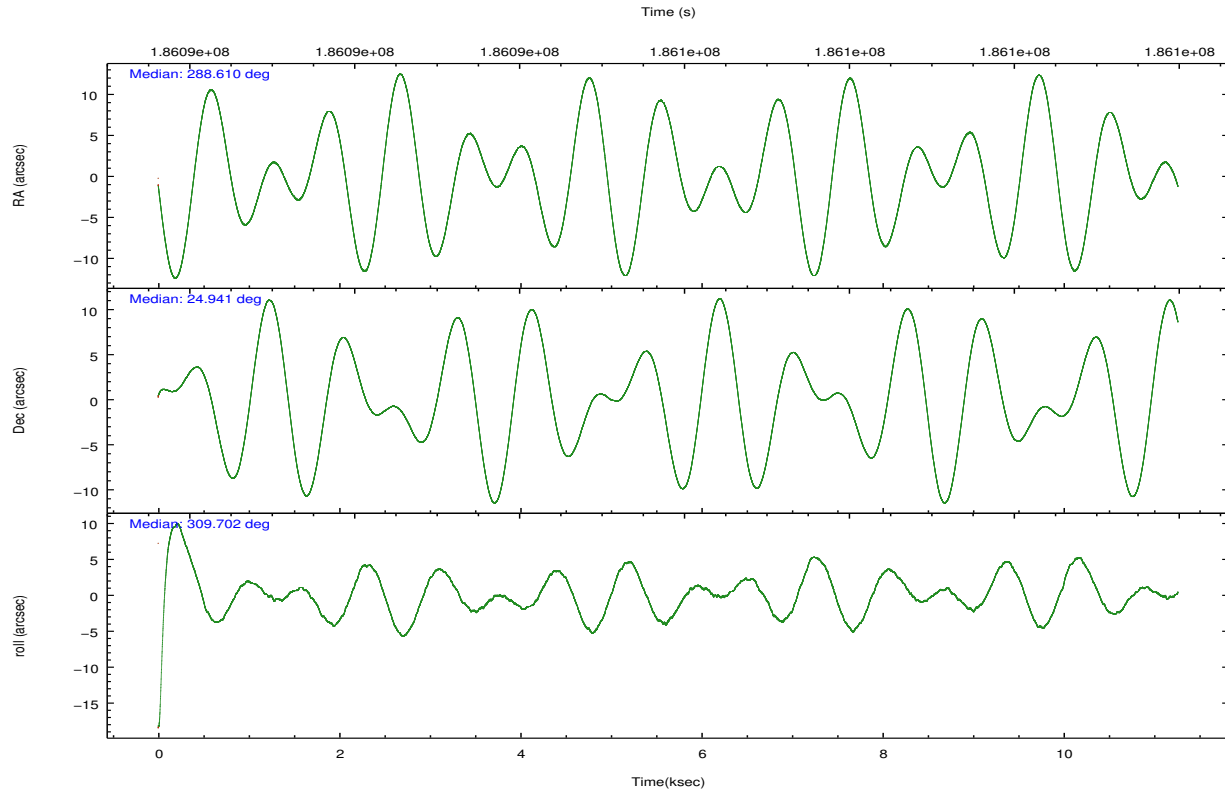
	ccd 2	ccd 3	ccd 5	ccd 6	ccd 7	ccd 8
grade 0 events	1324	1361	21758	1305	4173	11638
	11%	10%	32%	10%	10%	25%
grade 1 events	34	50	87	38	82	134
	0%	0%	0%	0%	0%	0%
grade 2 events	3844	4048	15577	4133	8879	7855
	33%	32%	23%	32%	21%	17%
grade 3 events	1169	1455	1232	1209	2705	7410
	10%	11%	1%	9%	6%	16%
grade 4 events	1137	1226	1245	1168	2558	6746
	9%	9%	1%	9%	6%	14%
grade 5 events	1972	2285	5177	2417	6384	3409
	17%	18%	7%	18%	15%	7%
grade 6 events	1974	2200	22202	2506	16089	7887
	17%	17%	33%	19%	39%	17%
grade 7 events	0	0	0	0	0	0
	0%	0%	0%	0%	0%	0%

2.2 Compared Parameters

Parameter	Planned	Actual	Parameter	Planned	Actual
Instrument	ACIS	ACIS	Obspar format version number	7	7
Detector	ACIS-235678	ACIS-235678	Obspar file type	PREDICTED	ACTUAL
Grating	NONE	NONE	Obspar update status	NONE	UPDATED
Data mode	CC33_FAINT	CC33_FAINT	Number of optional ACIS chips dropped	0	0
Observation mode	POINTING	POINTING	On-chip summing requested	N	N
[deg] Pointing RA	288.581850	288.6101337495805	Subarray requested	NONE	NONE
[deg] Pointing Dec	24.950371	24.94129927051431	Alternating exposures requested	N	N
[deg] Pointing Roll	309.559082	309.7037545259077	[s] Primary exposure time	0.000000	0
[mm] SIM focus pos	-0.684267	-0.6828225247311905			
[mm] SIM defocus	0	0.001444936568705701			
[mm] SIM translation stage pos	-190.132523	-190.1400660498719			
[mm] SIM translation stage offset	0	0.00754346686406393			
[s] Observation start time (MET)	186091144.184000	186089787.13348			
Observation start date	2003-11-24T19:58:00	2003-11-24T19:36:27			
[s] Observation end time (MET)	186101432.184000	186102584.25903			
Observation end date	2003-11-24T22:49:28	2003-11-24T23:09:44			
Read mode	CONTINUOUS	CONTINUOUS			

2.3 Aspect



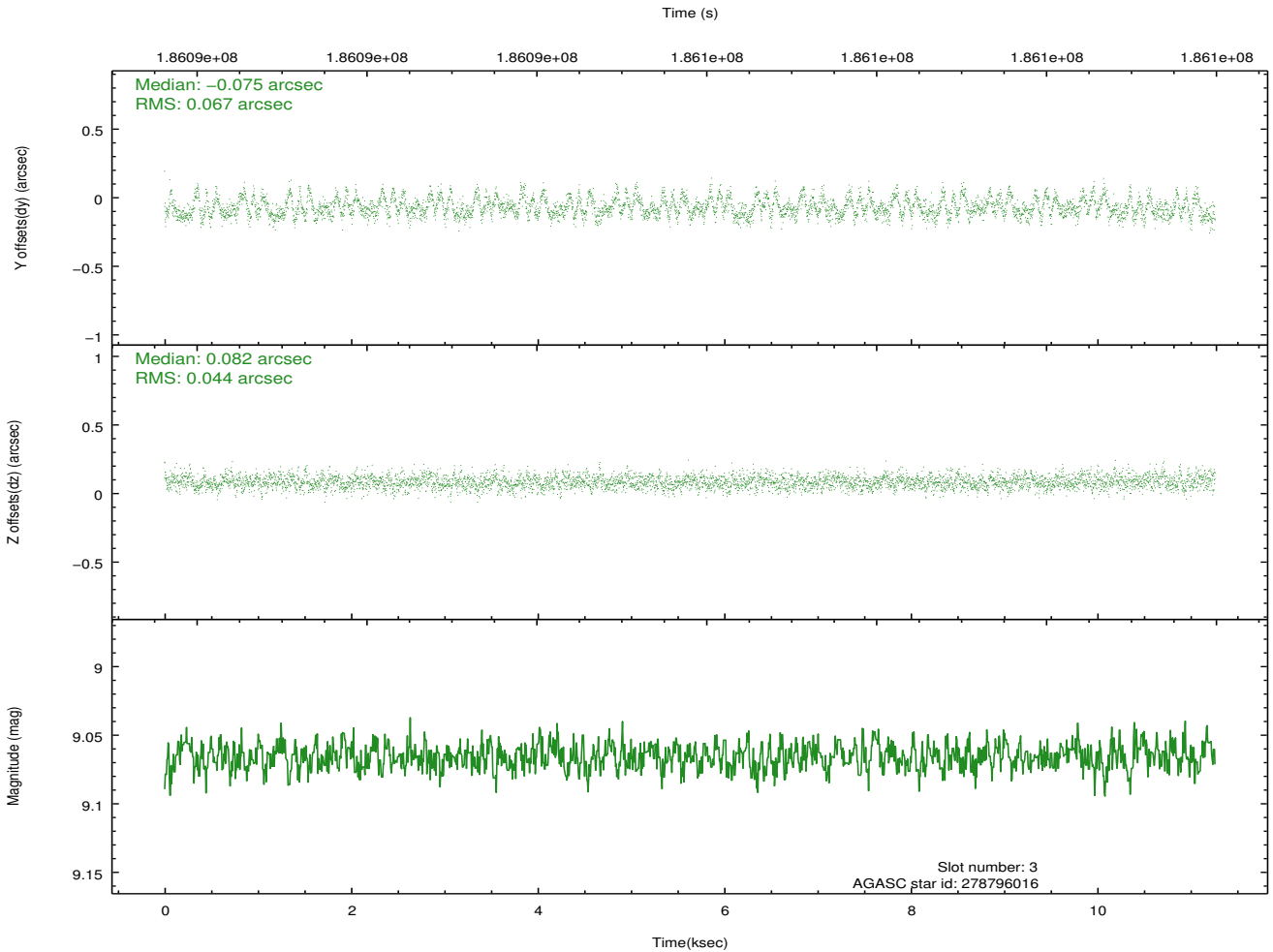
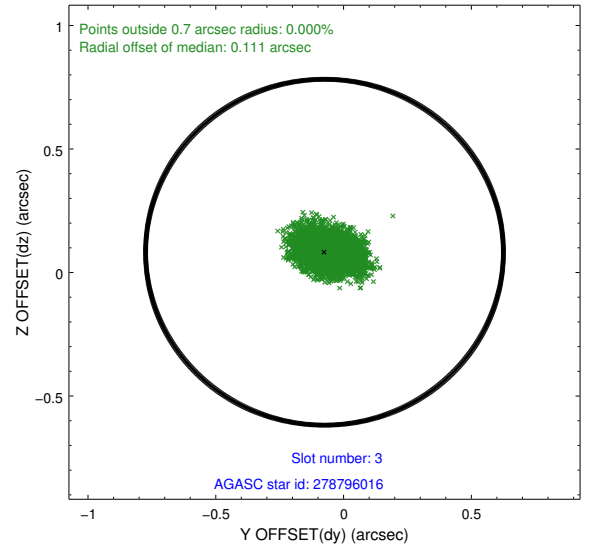
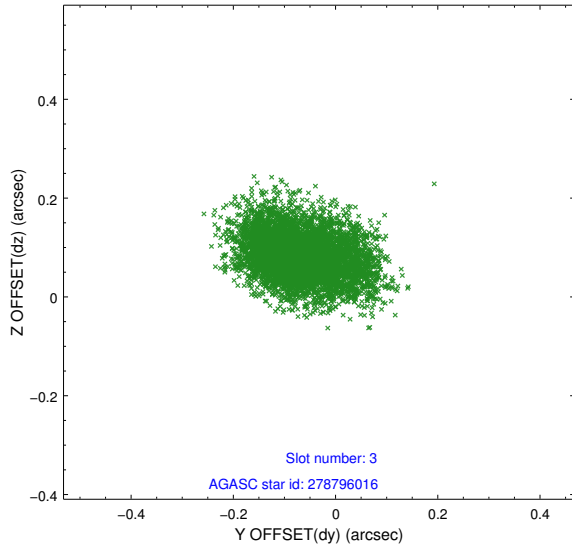


Slot Statistics

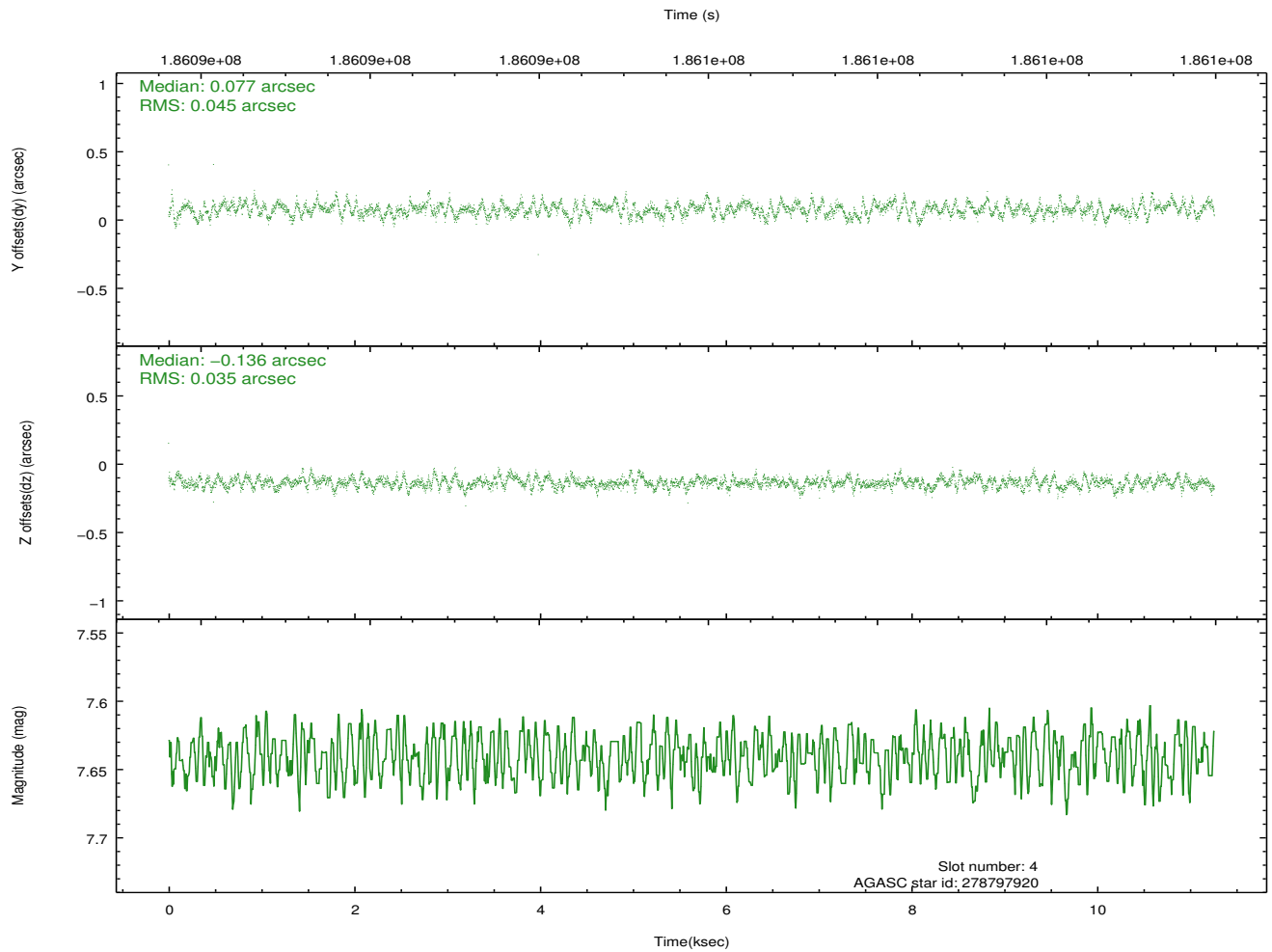
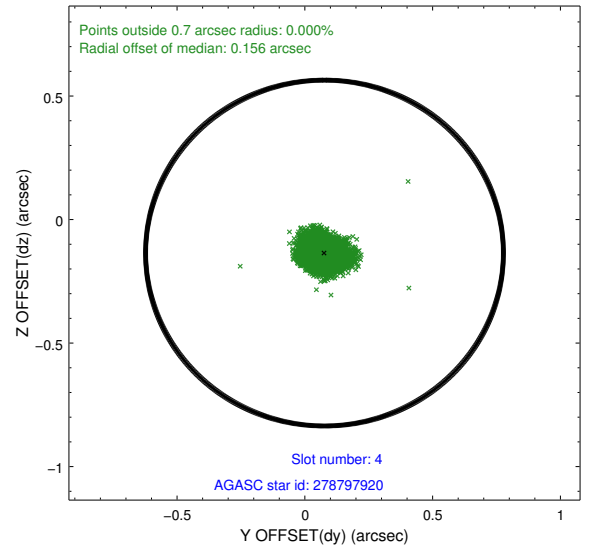
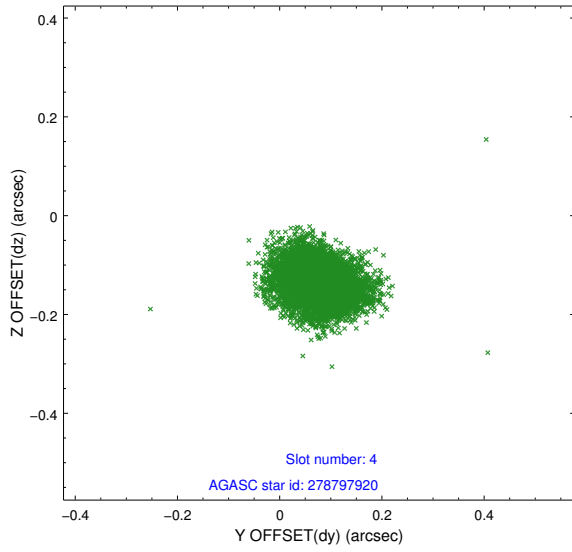
slot	status	id	mag	n_pts	med_dy	med_dz	dr1	dr2	ra	dec	mean_y	mean_z
0	FID	ACIS-S-1	7.19	2748	-0.005	-0.070	0.009	0.016	0.000000	0.000000	935.93	-1728.86
1	FID	ACIS-S-4	7.20	2748	0.027	0.013	0.008	0.013	0.000000	0.000000	2153.61	174.92
2	FID	ACIS-S-6	7.34	2747	-0.046	0.069	0.007	0.012	0.000000	0.000000	402.40	812.85
3	GUIDE	278796016	9.07	5495	-0.075	0.082	0.085	0.140	288.702028	25.796155	-2099.40	2239.84
4	GUIDE	278797920	7.64	5495	0.077	-0.136	0.061	0.098	288.580174	25.013203	-177.84	140.26
5	GUIDE	278808544	8.96	5491	-0.047	0.001	0.068	0.110	287.819957	25.159250	-2165.94	-1430.60
6	GUIDE	278953272	8.36	5494	-0.006	0.064	0.050	0.081	289.216166	24.729034	1931.49	1094.69
7	GUIDE	278954448	7.73	5494	0.045	-0.011	0.054	0.084	289.033961	24.779147	1415.50	748.02

2.4 Star Slots

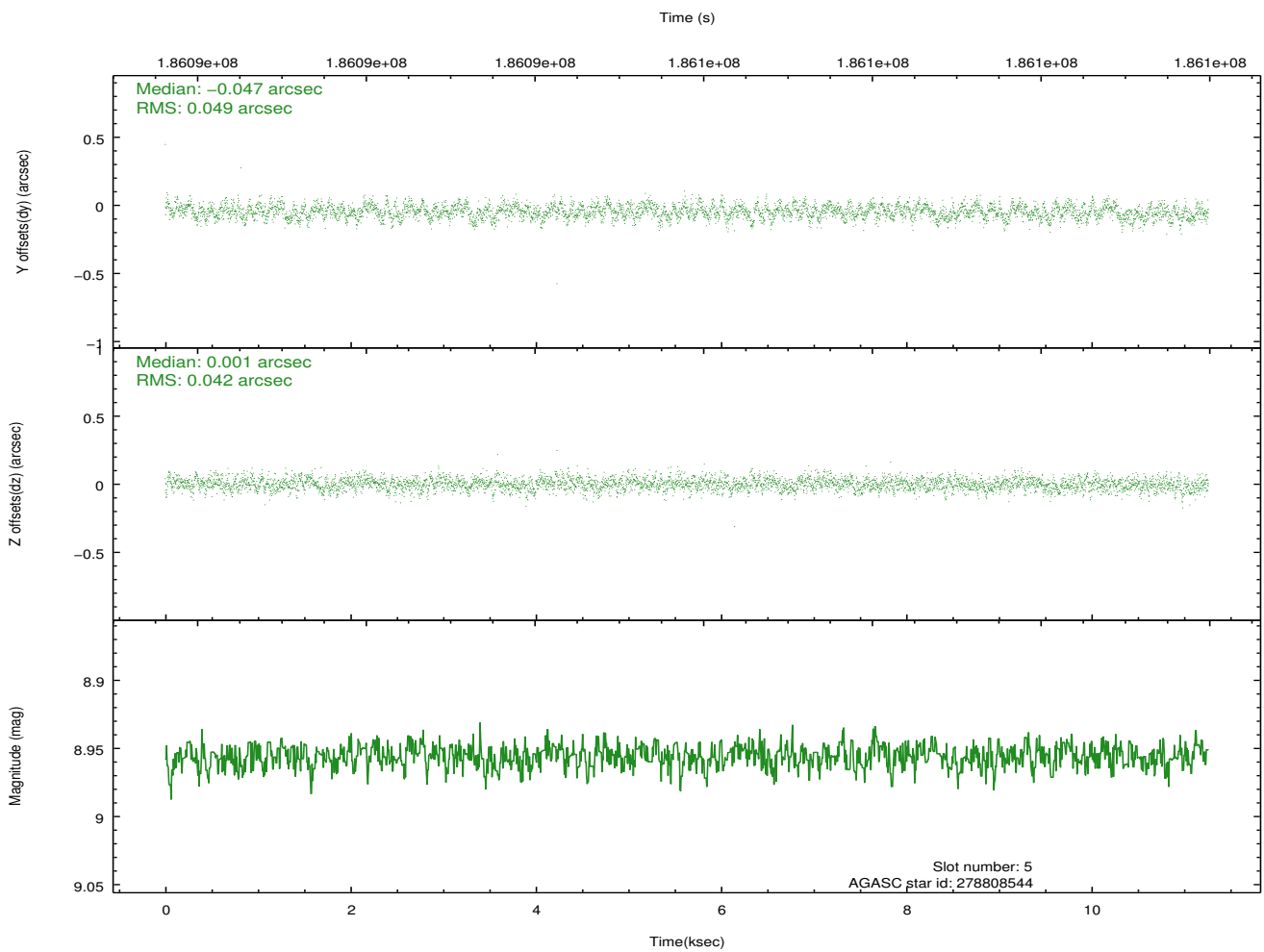
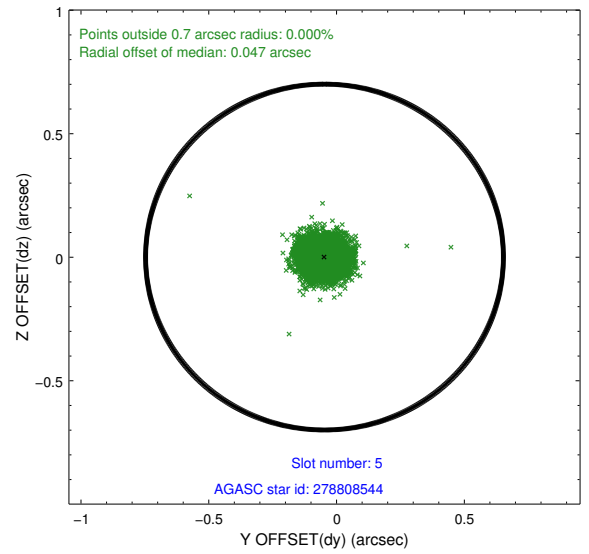
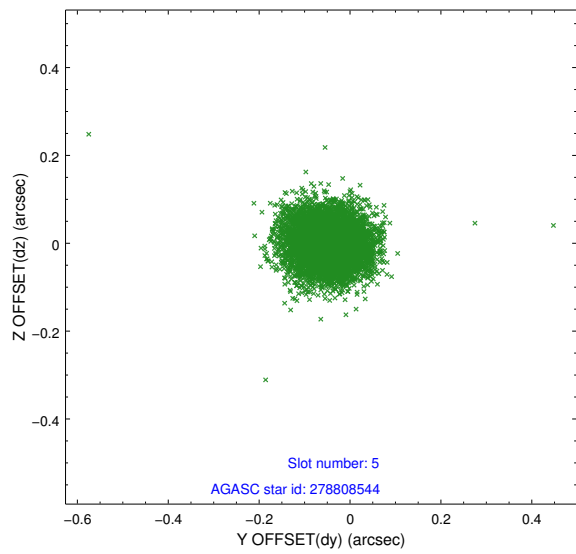
2.4.1 Slot 3



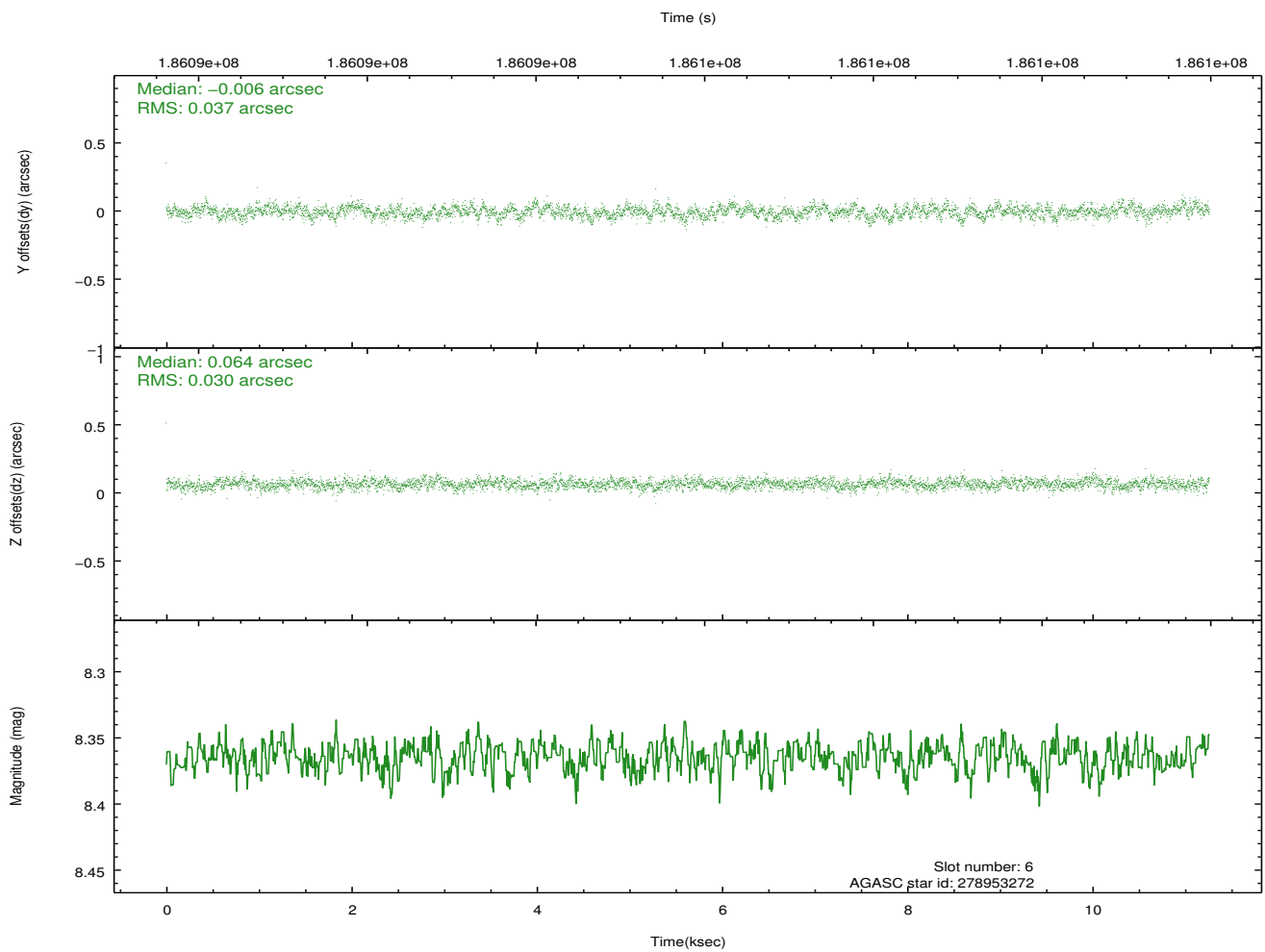
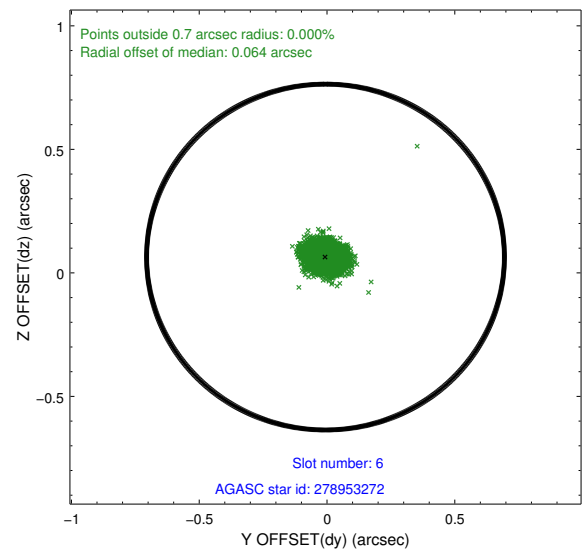
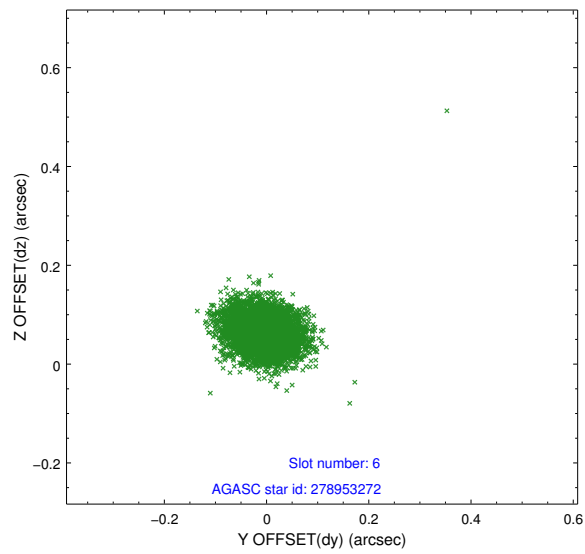
2.4.2 Slot 4



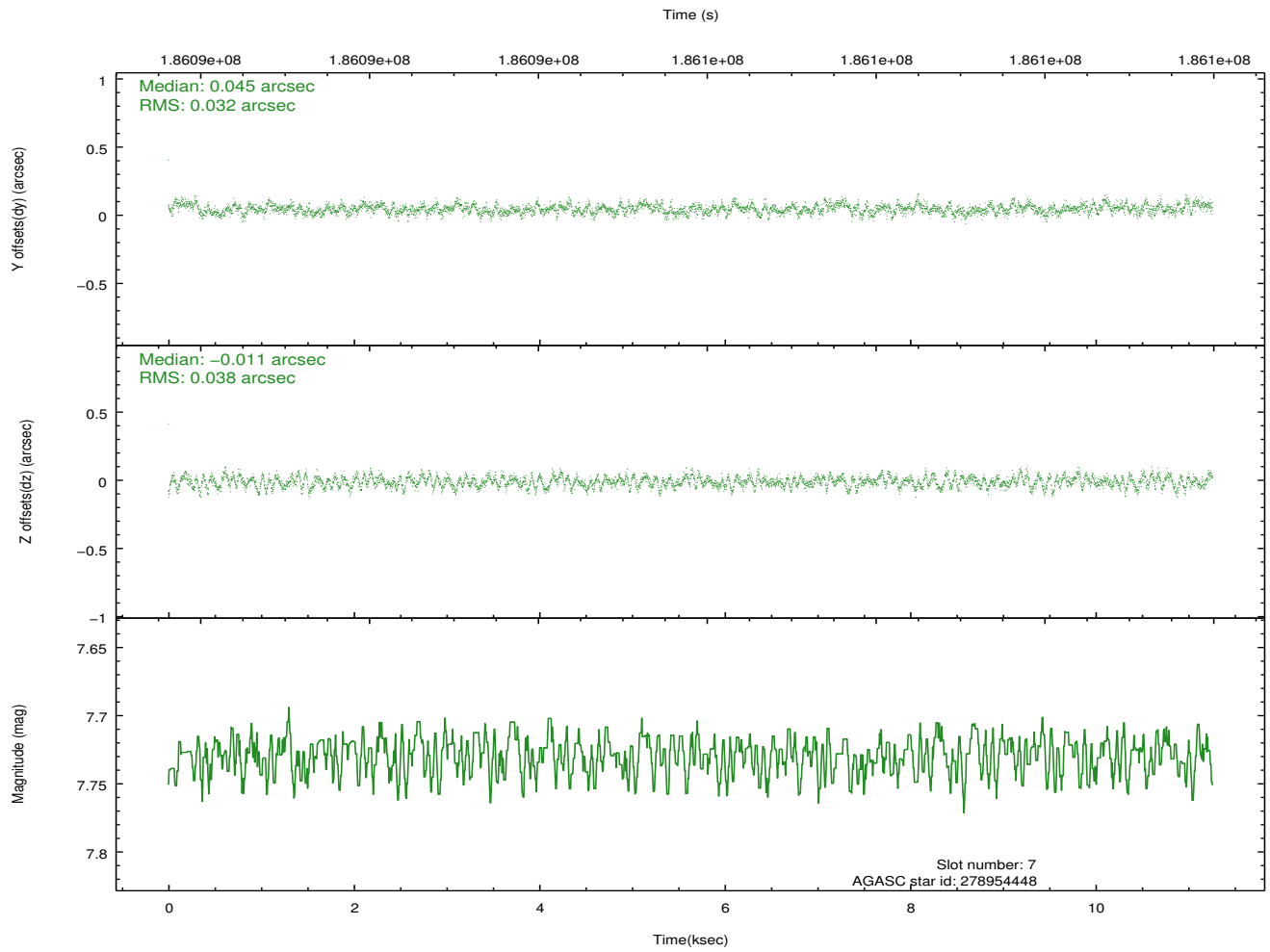
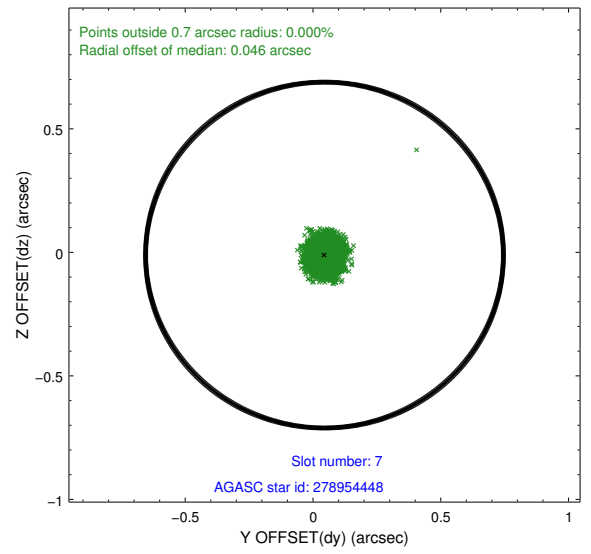
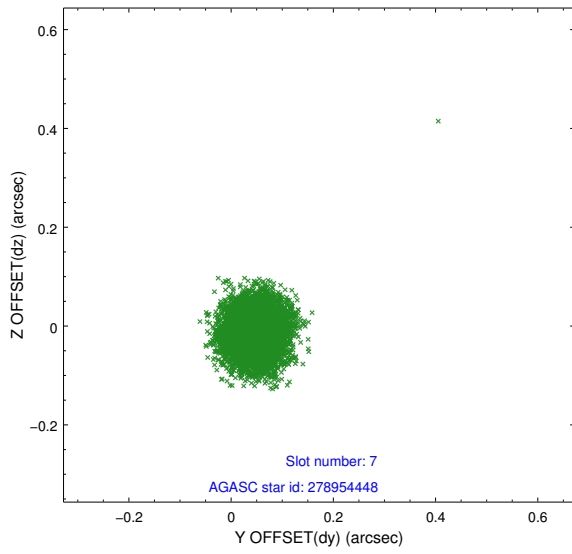
2.4.3 Slot 5



2.4.4 Slot 6

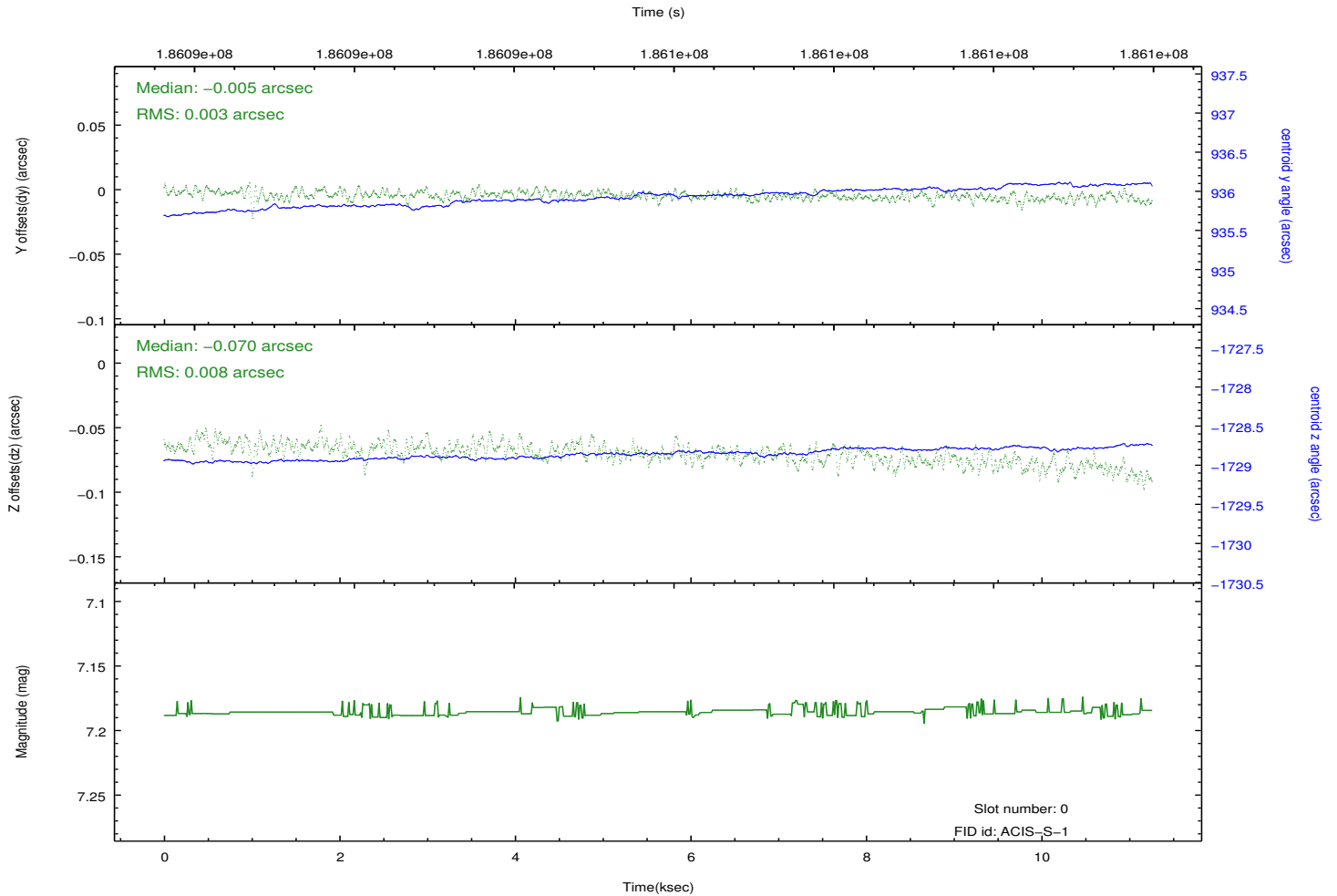
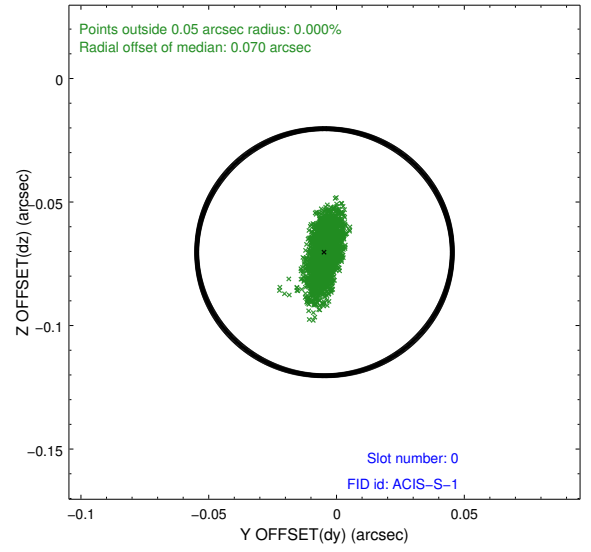
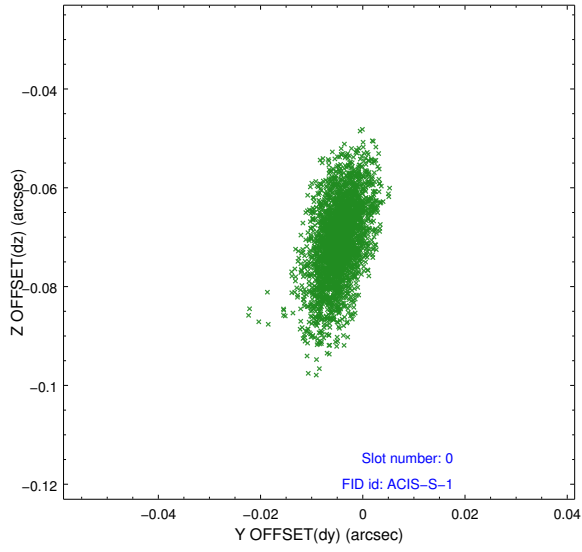


2.4.5 Slot 7

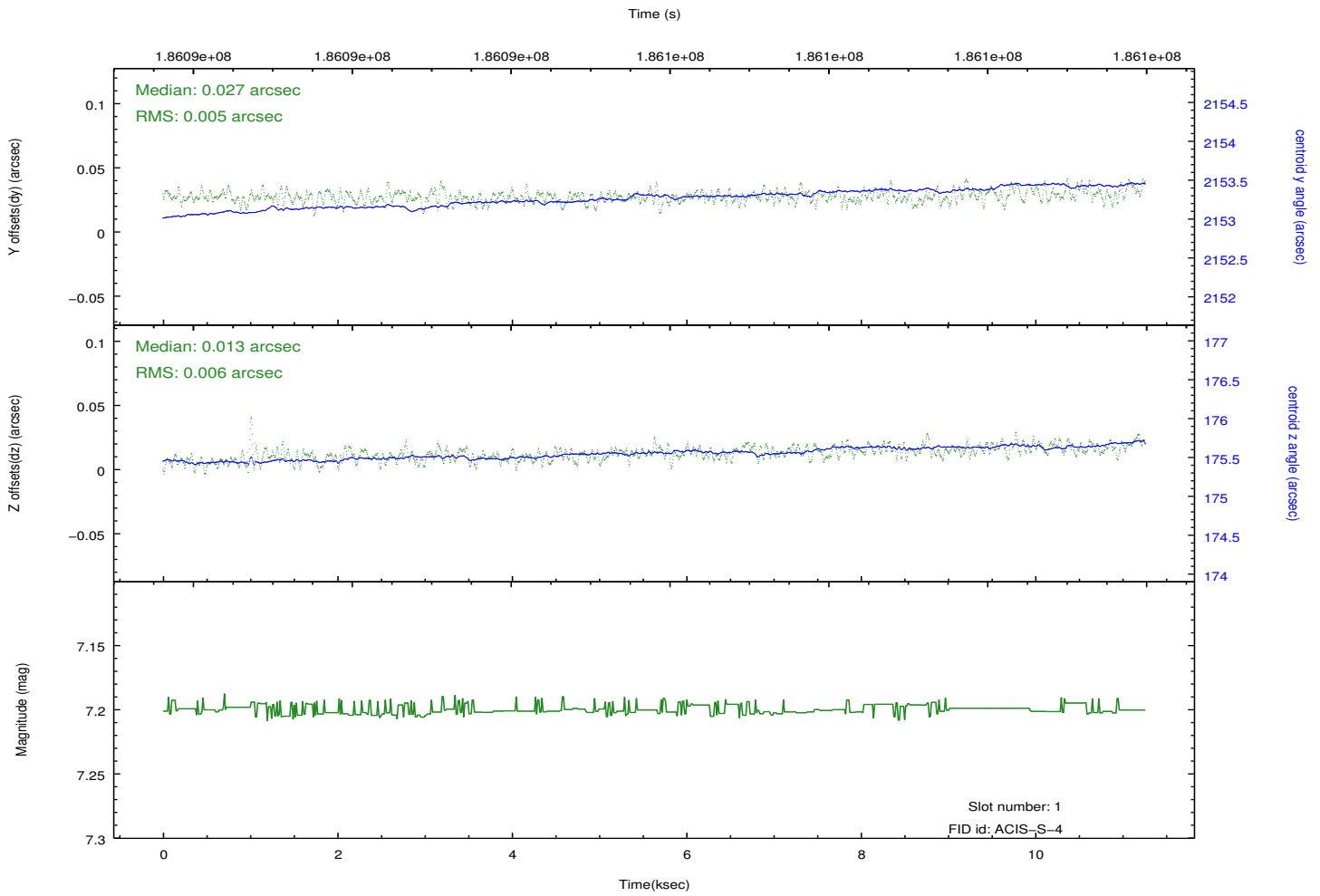
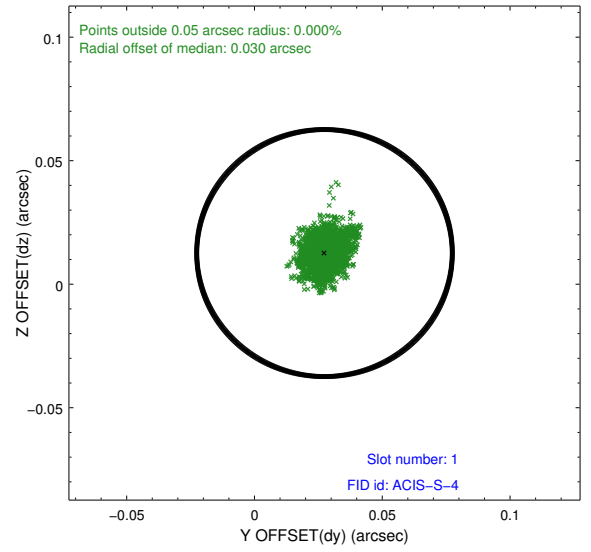
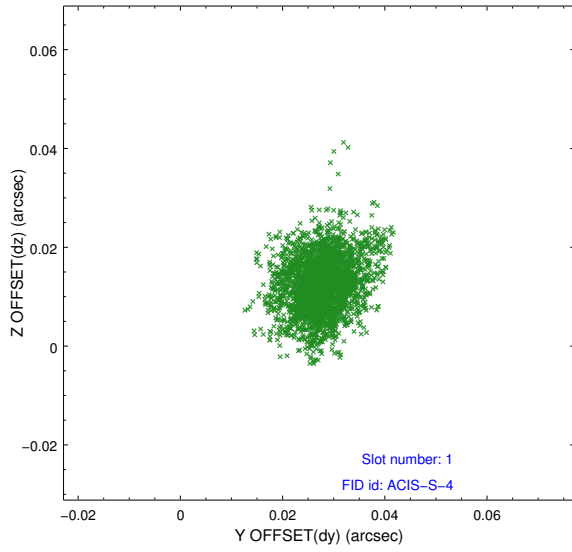


2.5 FID Slots

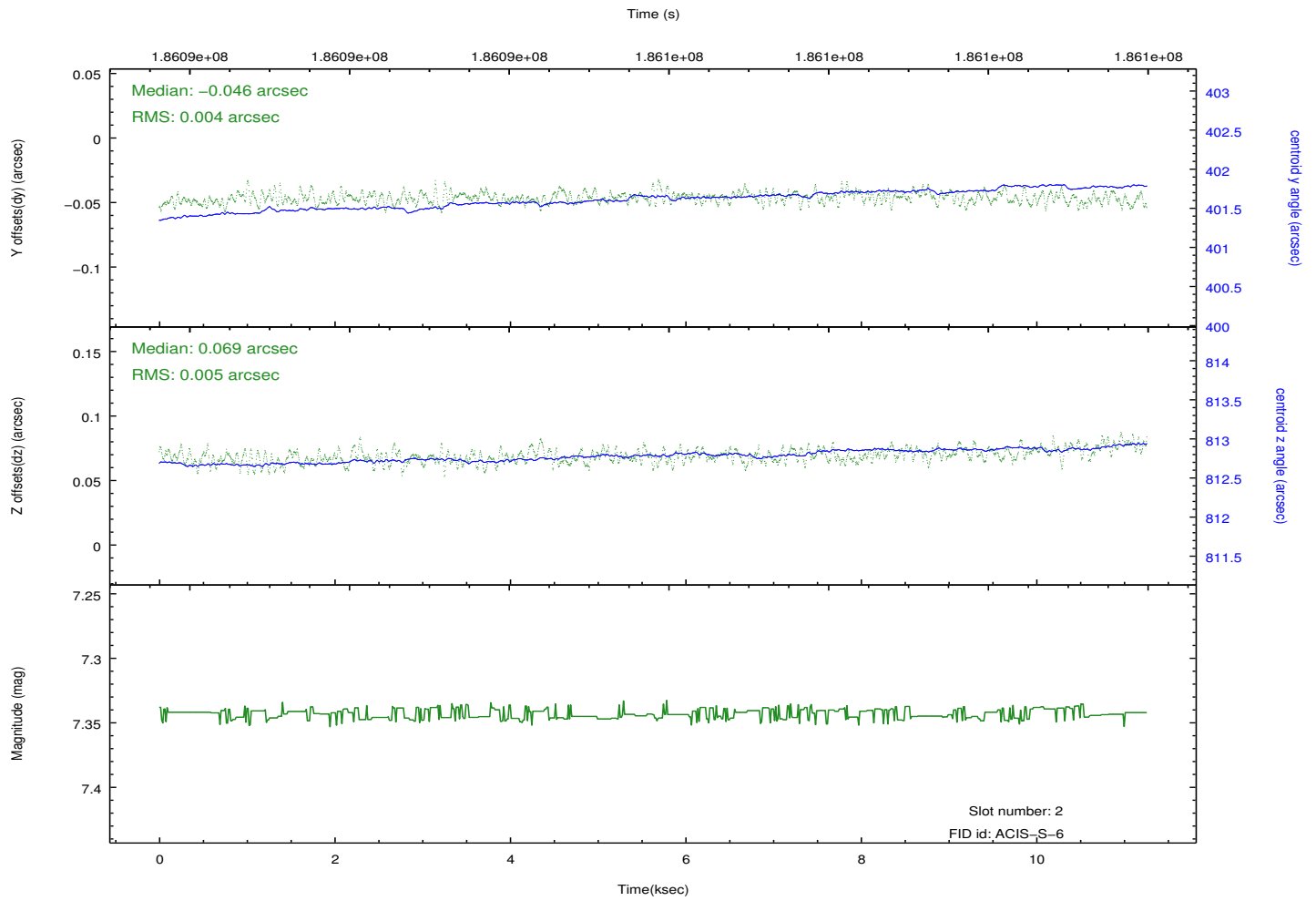
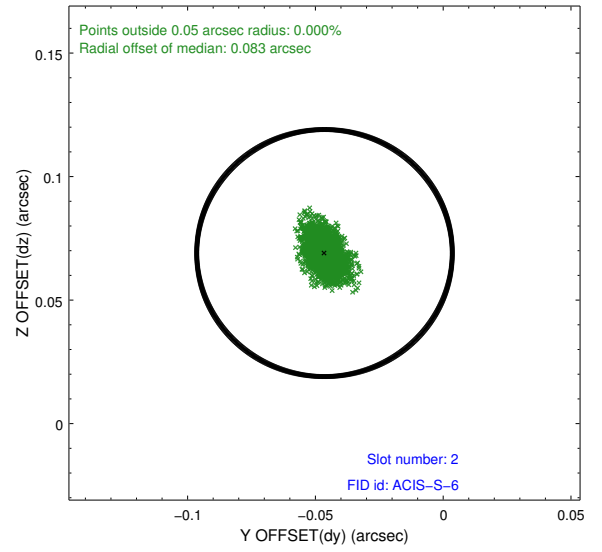
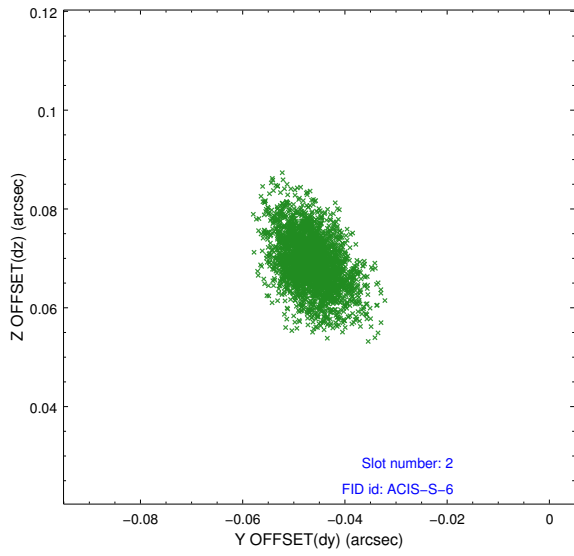
2.5.1 Slot 0



2.5.2 Slot 1



2.5.3 Slot 2



A Summary

A.1 Status

V&V Scientist	Joy Nichols
V&V Date (YYYY-MM-DD)	2012.12.12
V&V Edition	1
V&V Disposition and Status	OK
V&V Charge Time	11.26

A.2 Comments