

V&V Reference Report

L2 ASCDS Version : 8.4.5

Observation 3801 - L2 Version 3
Chandra X-Ray Center

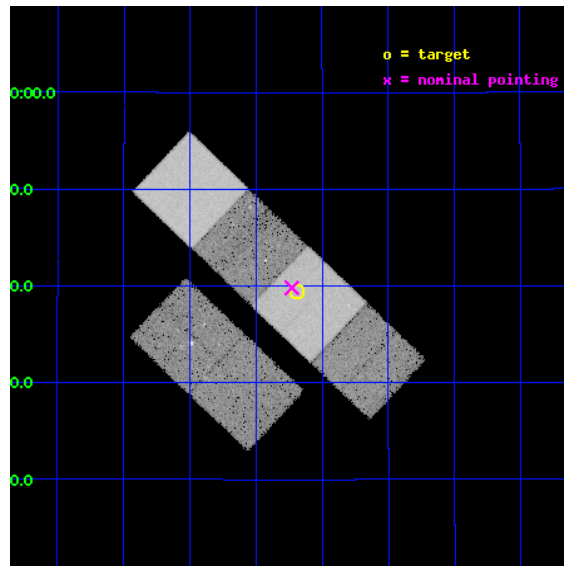
L2 Processing Date : Oct 22 2012

Contents

1	Front	2
2	OBI	3
2.1	OBI	3
2.1.1	Images	3
2.1.2	Bias	3
2.1.3	Parameters	4
2.1.4	Events	4
2.2	Compared Parameters	5
2.3	Aspect	6
2.4	Star Slots	9
2.4.1	Slot 3	9
2.4.2	Slot 4	10
2.4.3	Slot 5	11
2.4.4	Slot 6	12
2.4.5	Slot 7	13
2.5	FID Slots	14
2.5.1	Slot 0	14
2.5.2	Slot 1	15
2.5.3	Slot 2	16
A	Summary	17
A.1	Status	17
A.2	Comments	17

1 Front

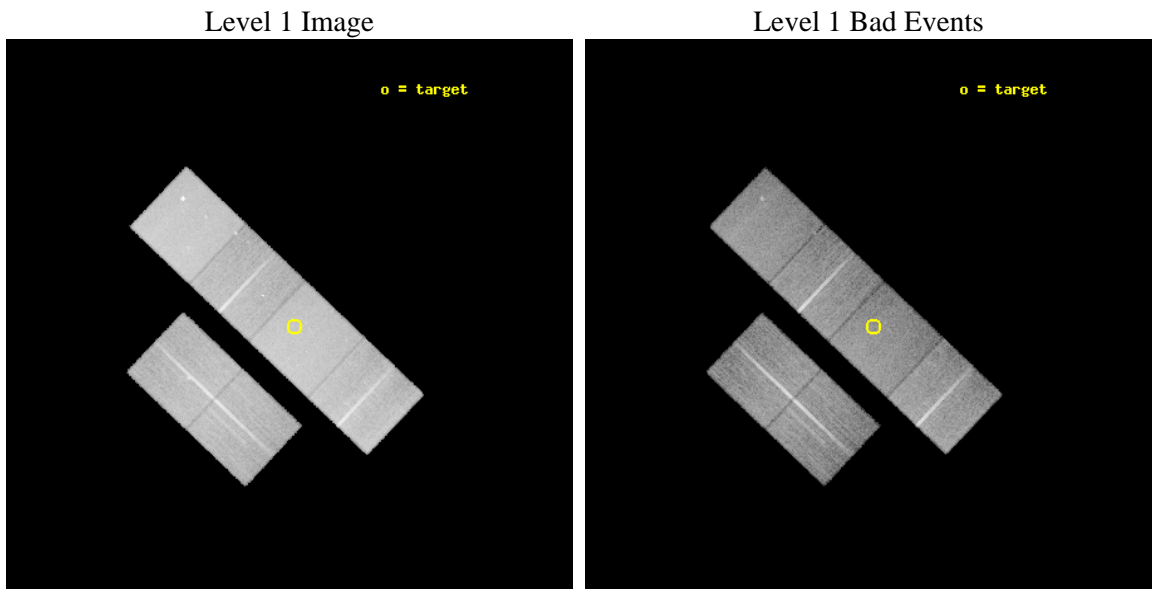
seq_num	400288	Sequence number
obs_id	3801	Observation id
title	A SEARCH FOR X-RAY JETS IN QUIESCENT MICROQUASARS	Proposal title
observer	Dr. John Tomsick	Principal investigator
object	XTE J1859+226	Source name
dtycycle	0	
cycle	P	events from which exps? Prim/Second/Both
ra_targ	284.673333	Observer's specified target RA [deg]
dec_targ	22.658167	Observer's specified target Dec [deg]
ra_nom	284.68208671923	Nominal RA [deg]
dec_nom	22.663493105916	Nominal Dec [deg]
roll_nom	43.494441708964	Nominal Roll [deg]
revision	3	Processing version of data
ontime	25110.399906456	Sum of GTIs [s]
livetime	24792.436903173	Livetime [s]
ontime2	25110.399906456	Sum of GTIs [s]
ontime3	25110.399906456	Sum of GTIs [s]
ontime5	25110.399906456	Sum of GTIs [s]
ontime6	25110.399906456	Sum of GTIs [s]
ontime7	25110.399906456	Sum of GTIs [s]
ontime8	25107.158926219	Sum of GTIs [s]
l2events	265860	Number of level 2 events



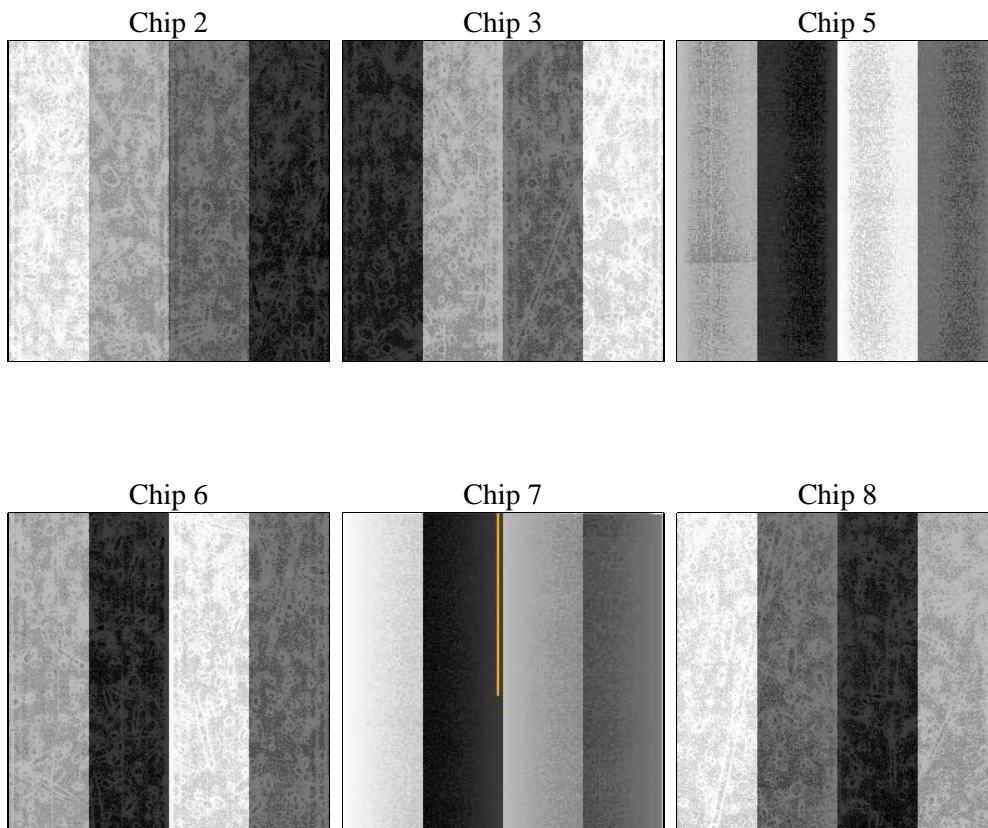
2 OBI

2.1 OBI

2.1.1 Images



2.1.2 Bias



2.1.3 Parameters

obi_num	0	Obi number	sched_exp_time	25357.773000	[s] Scheduled observation exposure time
ascdsver	8.4.5	Processing system revision	ontime	25110.399906456	Sum of GTIs [s]
caldbver	4.5.2	 	ontime2	25110.399906456	Sum of GTIs [s]
date	2012-10-22T04:54:13	Date and time of file creation	ontime3	25110.399906456	Sum of GTIs [s]
revision	3	Processing version of data	ontime5	25110.399906456	Sum of GTIs [s]
			ontime6	25110.399906456	Sum of GTIs [s]
			ontime7	25110.399906456	Sum of GTIs [s]
			ontime8	25107.158926219	Sum of GTIs [s]
			l1events	1160804	Number of level 1 events

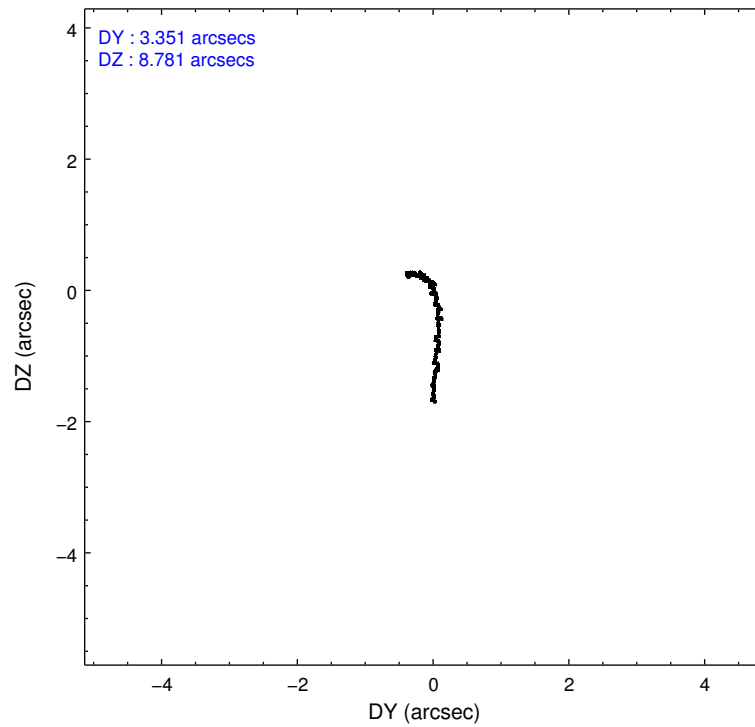
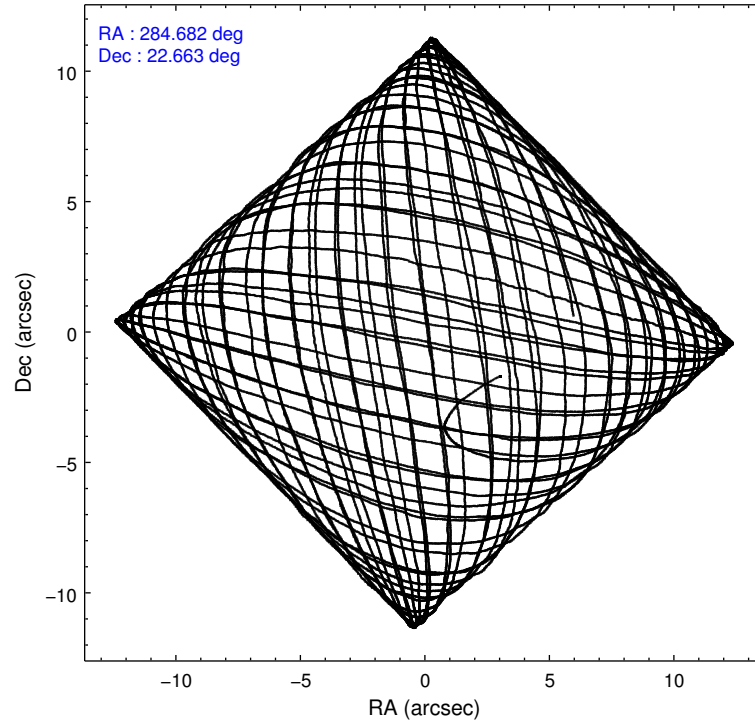
2.1.4 Events

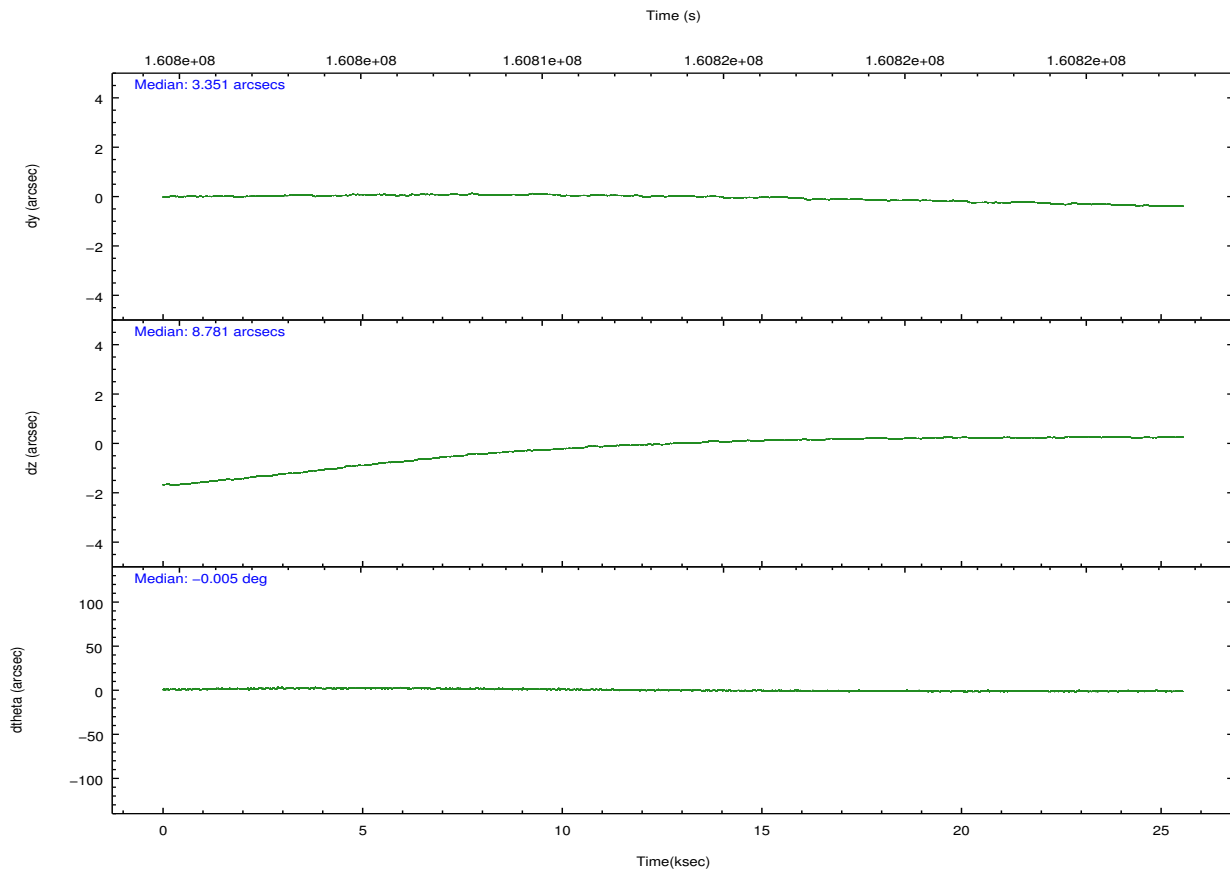
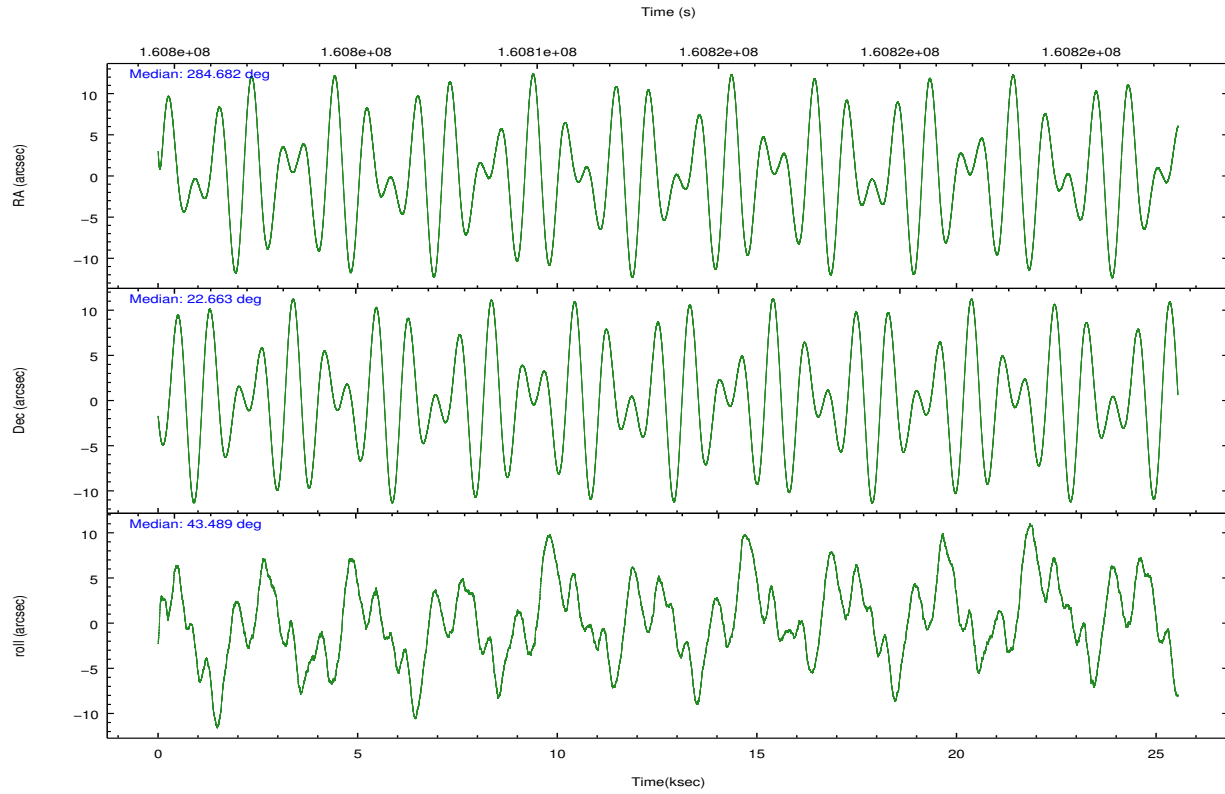
	ccd 2	ccd 3	ccd 5	ccd 6	ccd 7	ccd 8		ccd 2	ccd 3	ccd 5	ccd 6	ccd 7	ccd 8
level 1 events	170886	159252	239305	164971	219866	206524	grade 0 events	9753	8207	9607	8181	8689	13629
rejected events	150276	140787	130033	145244	126601	165296		5%	5%	4%	4%	3%	6%
rejected %	87%	88%	54%	88%	57%	80%	grade 1 events	97	92	633	72	226	123
								0%	0%	0%	0%	0%	0%
							grade 2 events	3964	3459	32251	3931	18615	8621
								2%	2%	13%	2%	8%	4%
							grade 3 events	1933	1805	4644	1903	8358	4569
								1%	1%	1%	1%	3%	2%
							grade 4 events	1820	1838	4586	1883	8246	4243
								1%	1%	1%	1%	3%	2%
							grade 5 events	6391	6991	17950	7487	21076	9524
								3%	4%	7%	4%	9%	4%
							grade 6 events	3154	3157	58208	3834	49380	10170
								1%	1%	24%	2%	22%	4%
							grade 7 events	143774	133703	111426	137680	105276	155645
								84%	83%	46%	83%	47%	75%

2.2 Compared Parameters

Parameter	Planned	Actual	Parameter	Planned	Actual
Instrument	ACIS	ACIS	Obspar format version number	7	7
Detector	ACIS-235678	ACIS-235678	Obspar file type	PREDICTED	ACTUAL
Grating	NONE	NONE	Obspar update status	NONE	UPDATED
Data mode	FAINT	FAINT	Number of optional ACIS chips dropped	0	0
Observation mode	POINTING	POINTING	On-chip summing requested	N	N
[deg] Pointing RA	284.674079	284.6820867192301	Subarray requested	NONE	NONE
[deg] Pointing Dec	22.637285	22.66349310591556	Alternating exposures requested	N	N
[deg] Pointing Roll	43.340899	43.49444170896375	[s] Primary exposure time	0.000000	3.2
[mm] SIM focus pos	-0.684267	-0.6828225247311905			
[mm] SIM defocus	0	0.001444936568705701			
[mm] SIM translation stage pos	-190.132523	-190.1400660498719			
[mm] SIM translation stage offset	0	0.00754346686406393			
[s] Observation start time (MET)	160801022.184000	160800260.35682			
Observation start date	2003-02-05T02:55:58	2003-02-05T02:44:20			
[s] Observation end time (MET)	160826379.184000	160826694.08293			
Observation end date	2003-02-05T09:58:35	2003-02-05T10:04:54			
Read mode	TIMED	TIMED			

2.3 Aspect



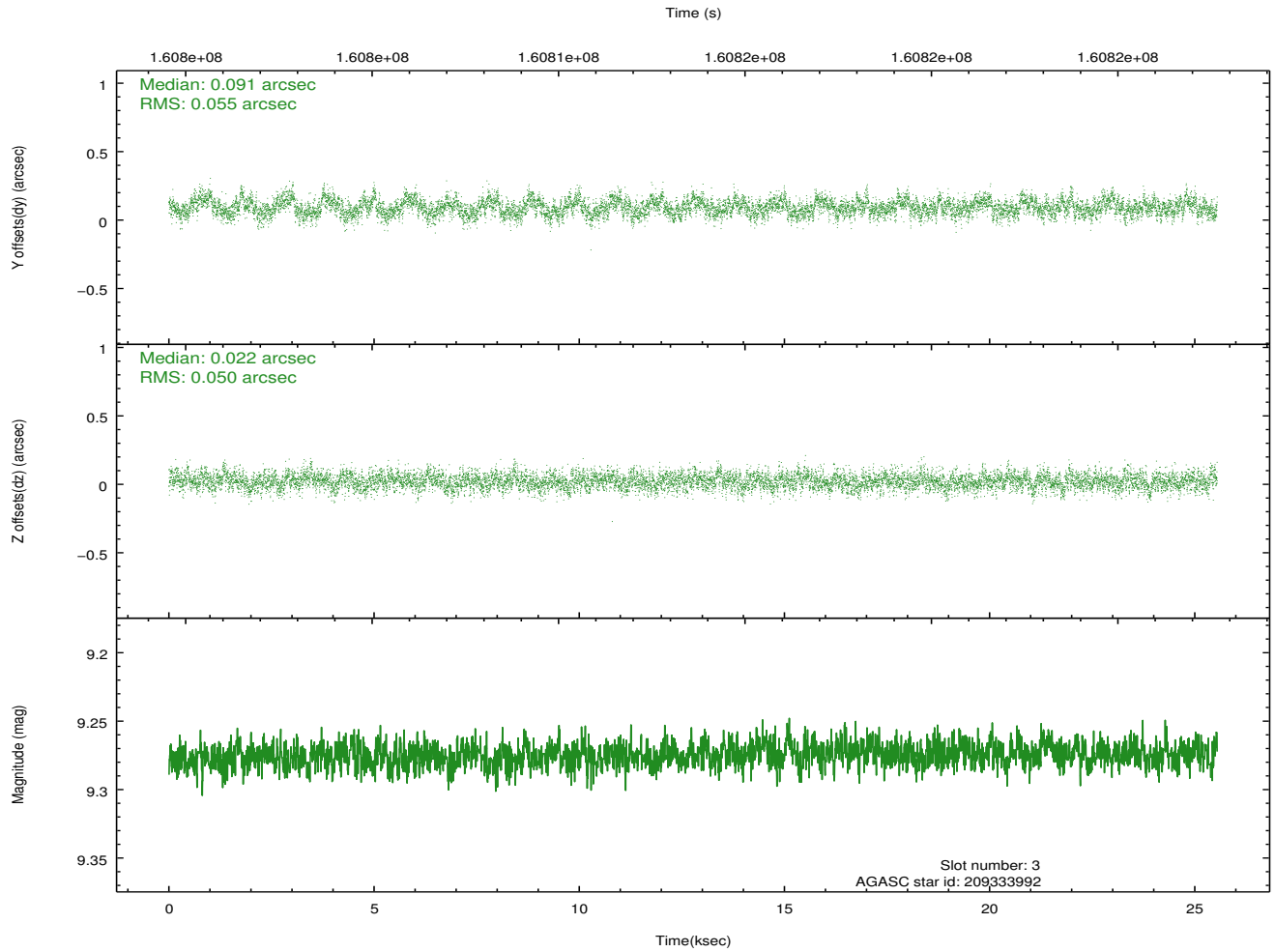
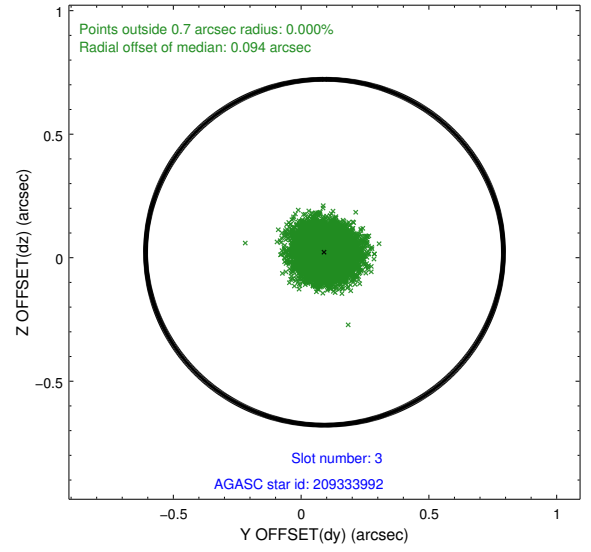
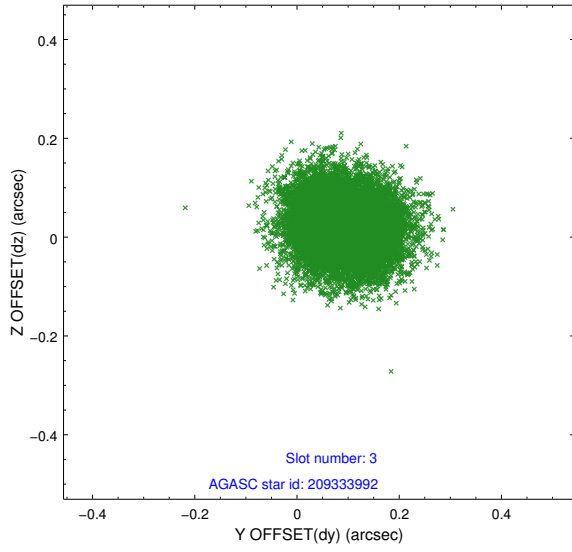


Slot Statistics

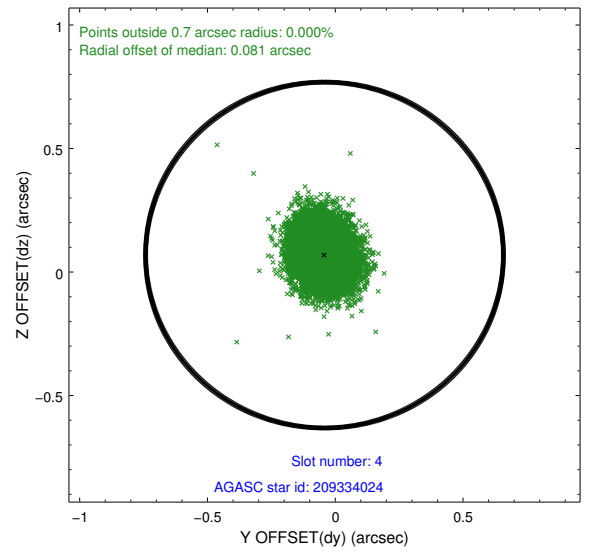
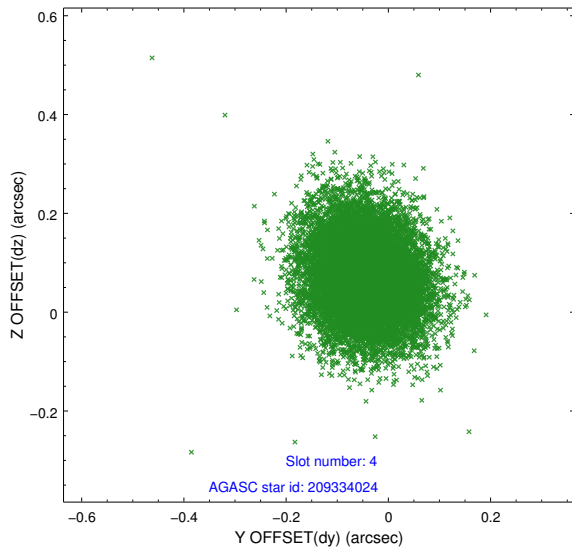
slot	status	id	mag	n_pts	med_dy	med_dz	dr1	dr2	ra	dec	mean_y	mean_z
0	FID	ACIS-S-1	7.20	6231	0.030	0.013	0.021	0.060	0.000000	0.000000	940.11	-1725.35
1	FID	ACIS-S-4	7.20	6231	-0.005	-0.018	0.013	0.038	0.000000	0.000000	2157.55	178.67
2	FID	ACIS-S-5	7.24	6231	-0.053	0.018	0.019	0.026	0.000000	0.000000	-1808.69	172.45
3	GUIDE	209333992	9.27	12452	0.091	0.022	0.080	0.129	284.593414	22.074724	-1585.88	-1288.05
4	GUIDE	209334024	9.58	12454	-0.042	0.069	0.098	0.162	285.130820	22.265139	188.42	-2017.07
5	GUIDE	278146728	9.54	12451	-0.078	0.053	0.115	0.186	285.180058	22.627003	1199.58	-1178.60
6	GUIDE	276449448	9.04	12455	0.048	-0.090	0.096	0.158	283.950863	22.680868	-1635.31	1766.99
7	GUIDE	276451912	8.89	12458	-0.019	-0.048	0.077	0.124	284.634202	23.205286	1307.39	1578.18

2.4 Star Slots

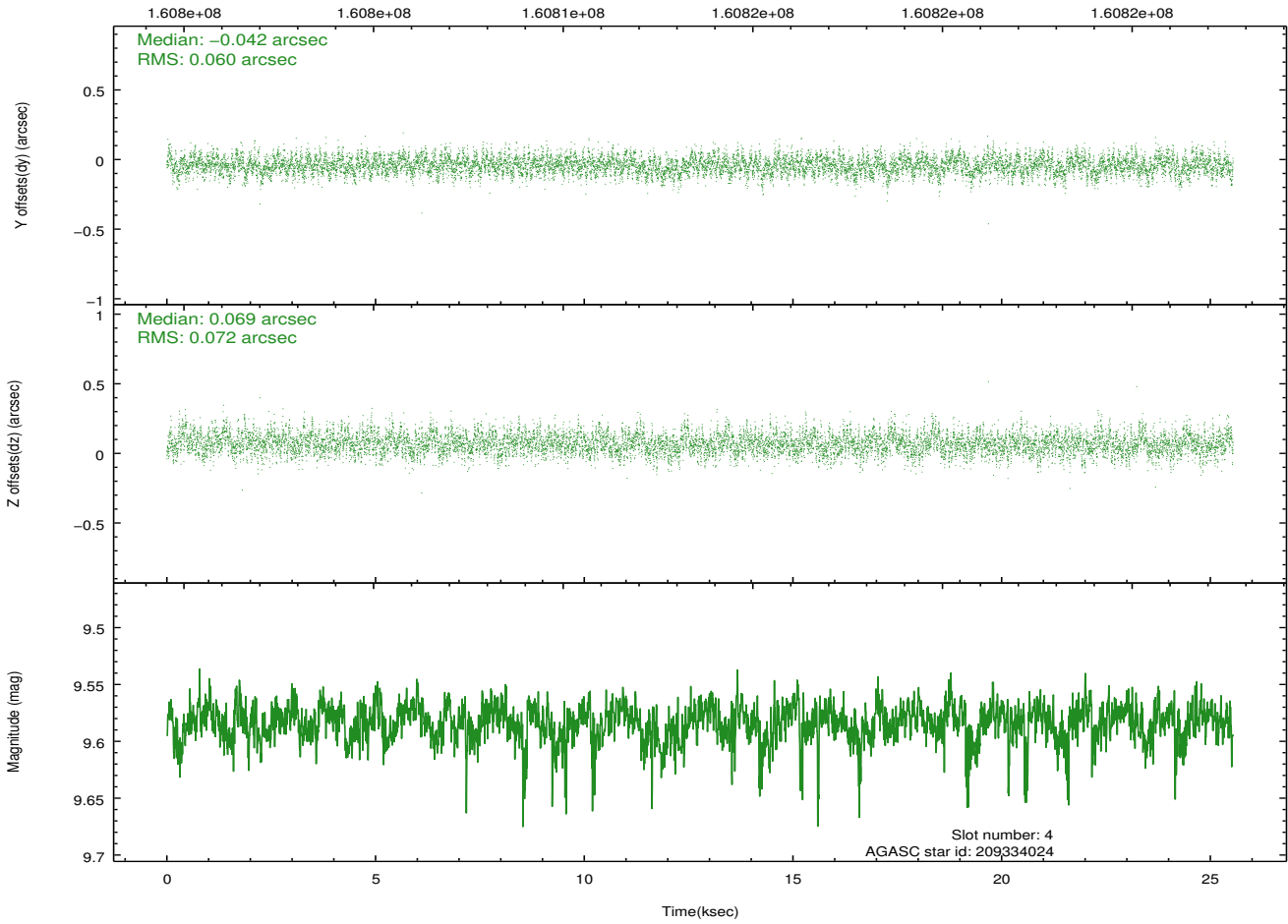
2.4.1 Slot 3



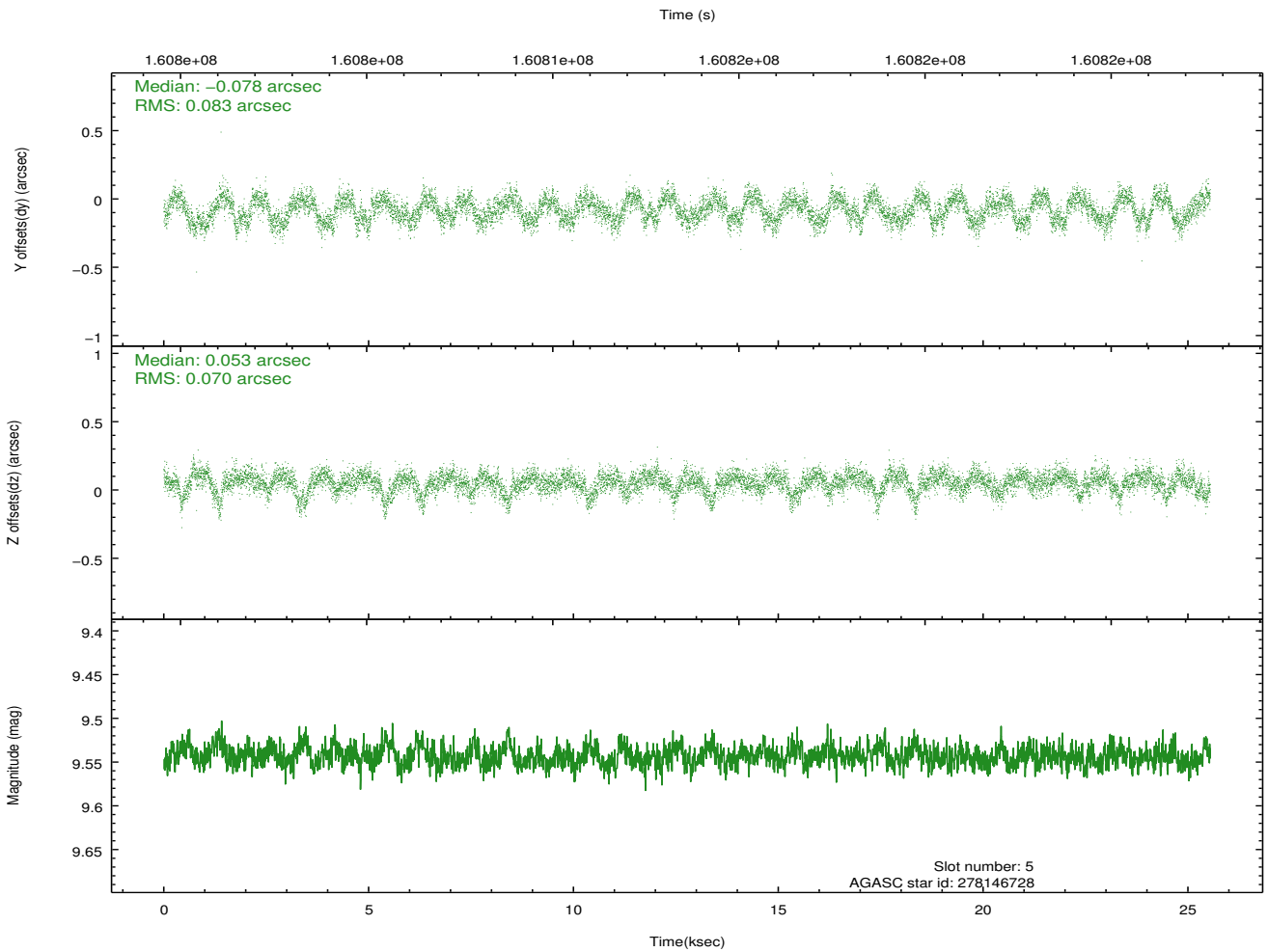
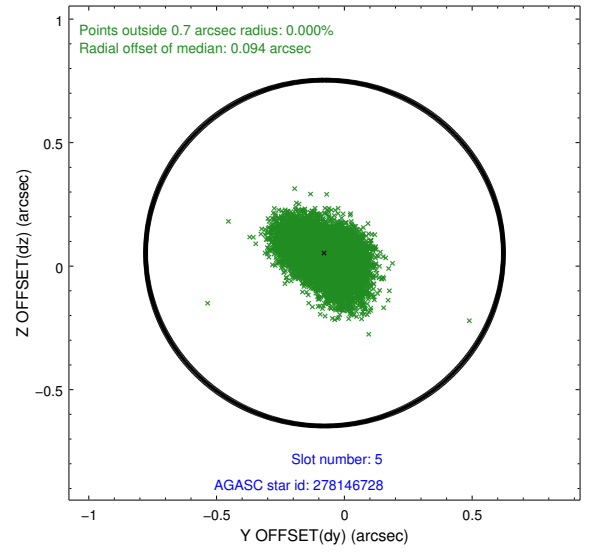
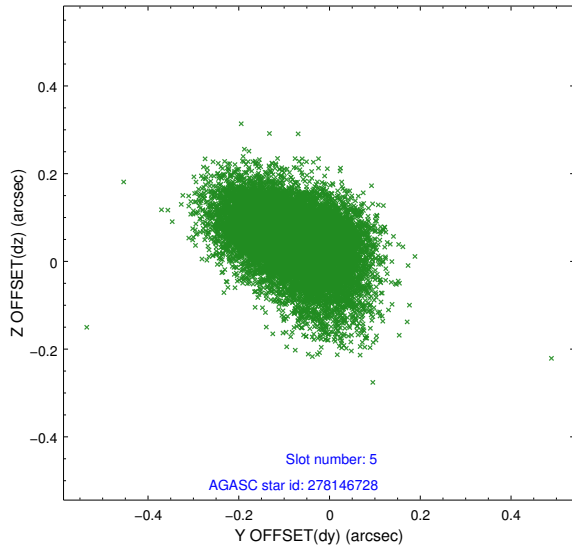
2.4.2 Slot 4



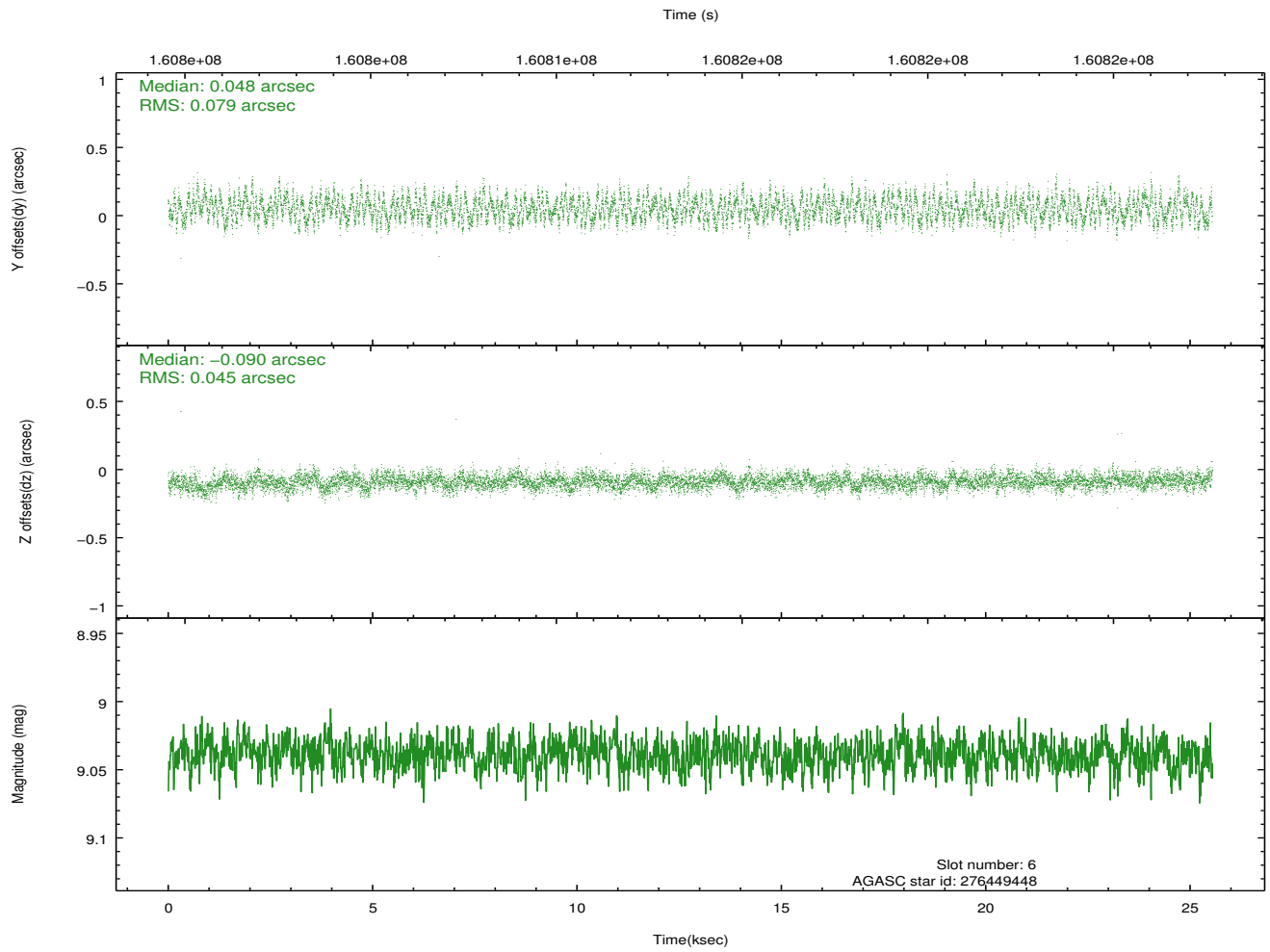
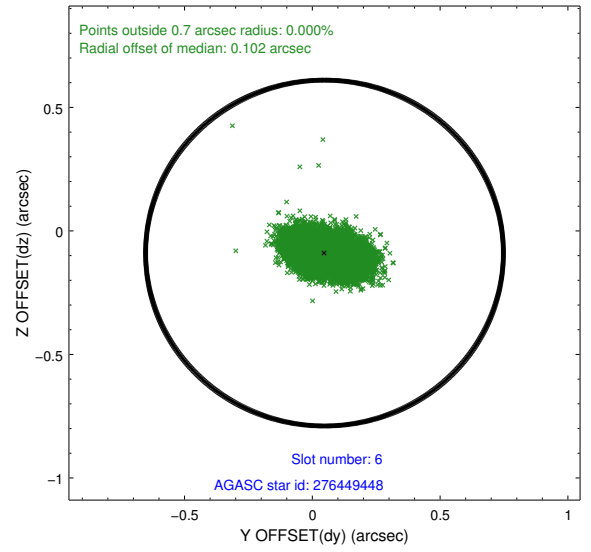
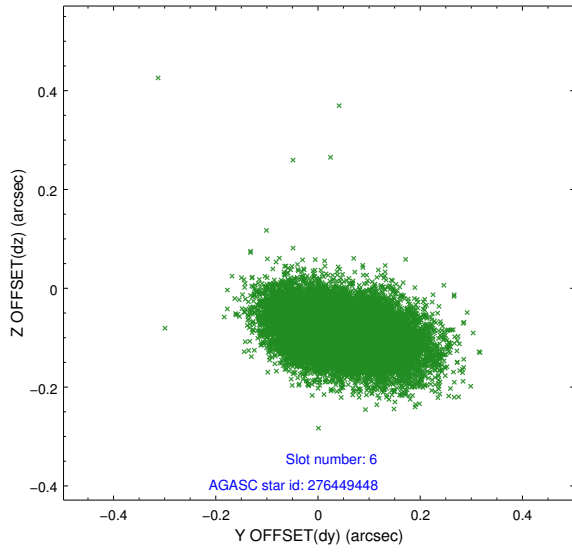
Time (s)



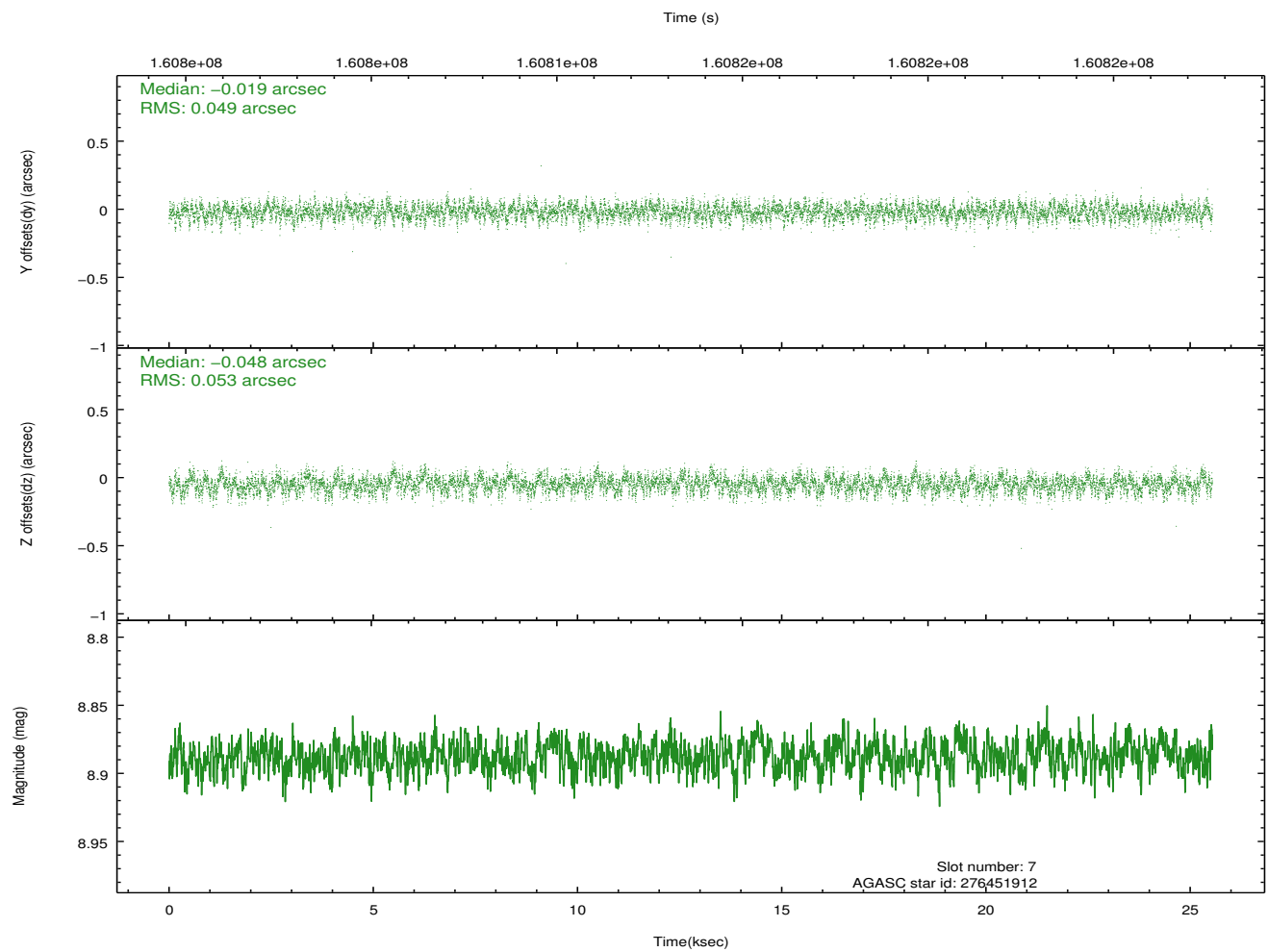
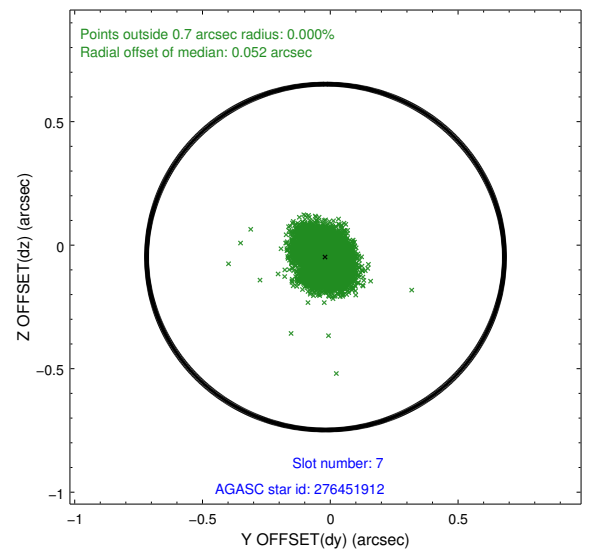
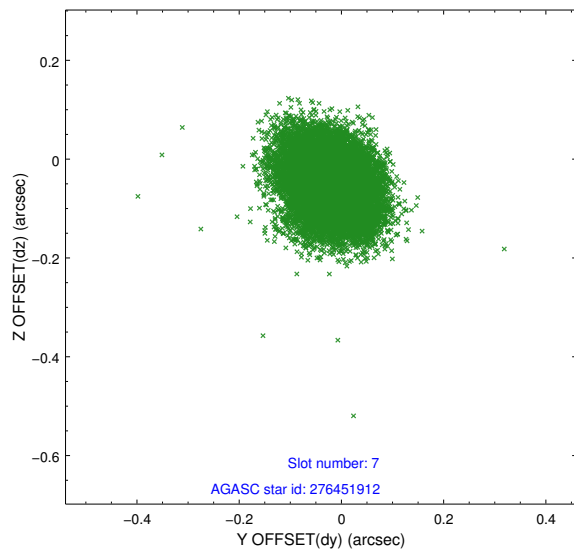
2.4.3 Slot 5



2.4.4 Slot 6

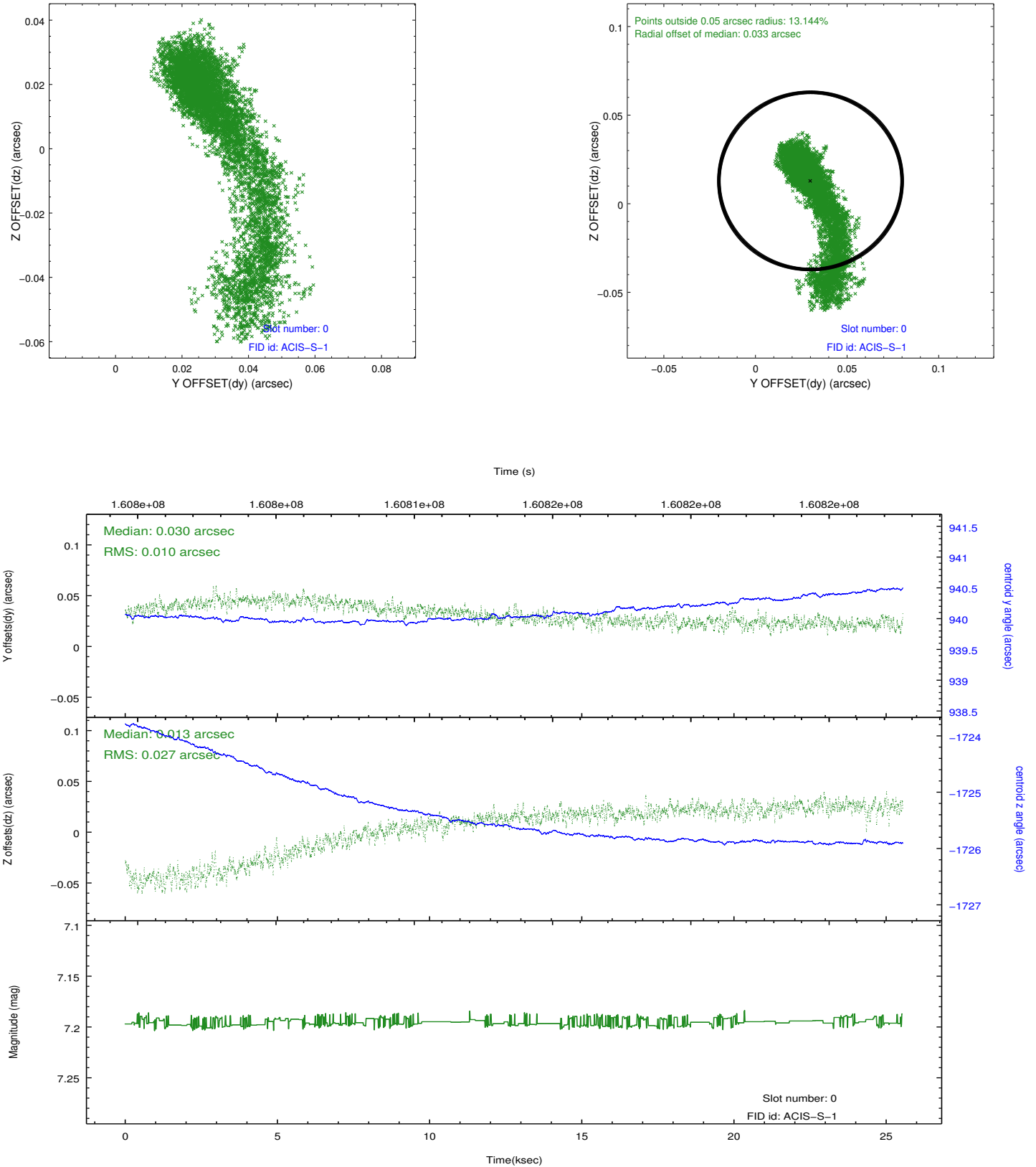


2.4.5 Slot 7

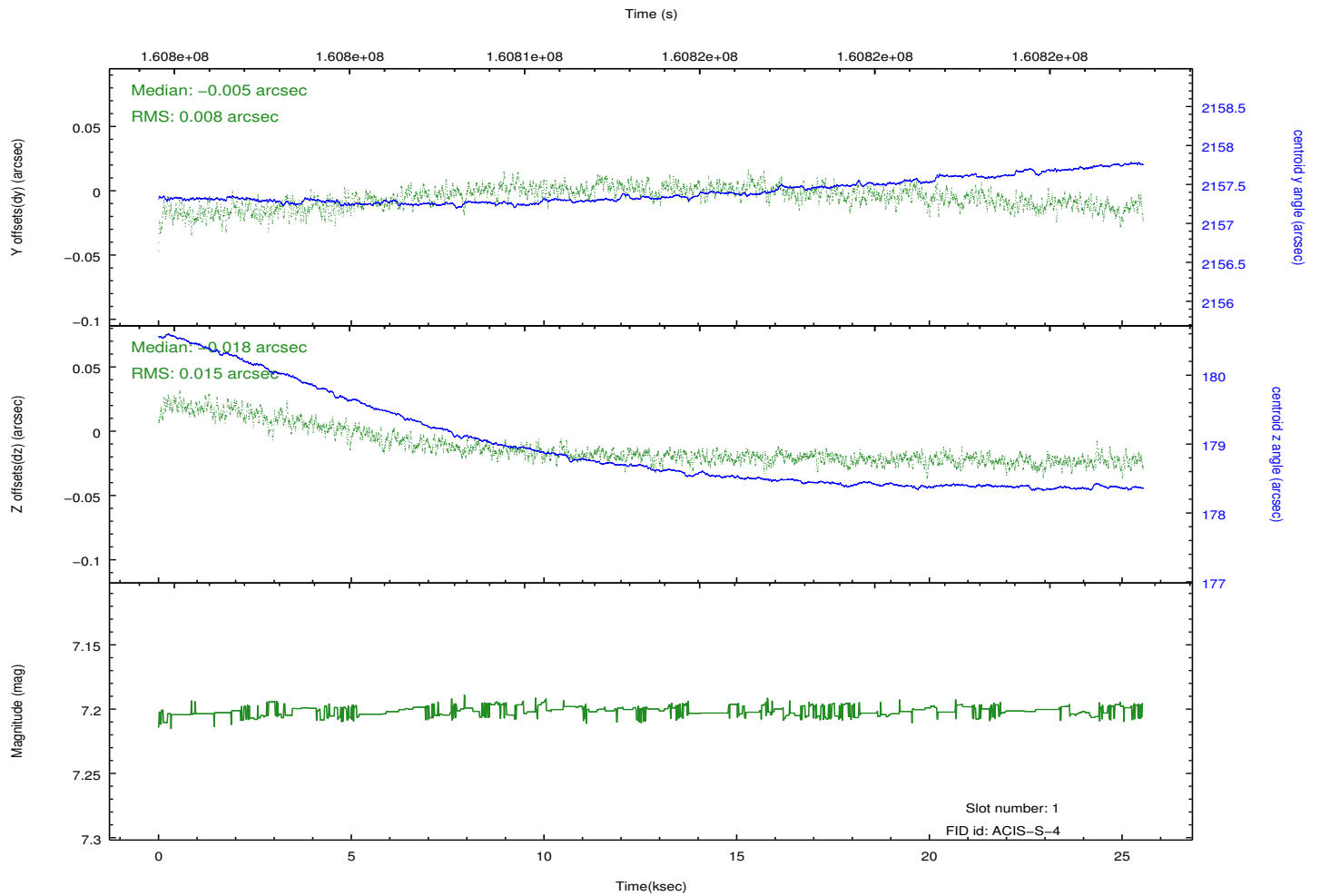
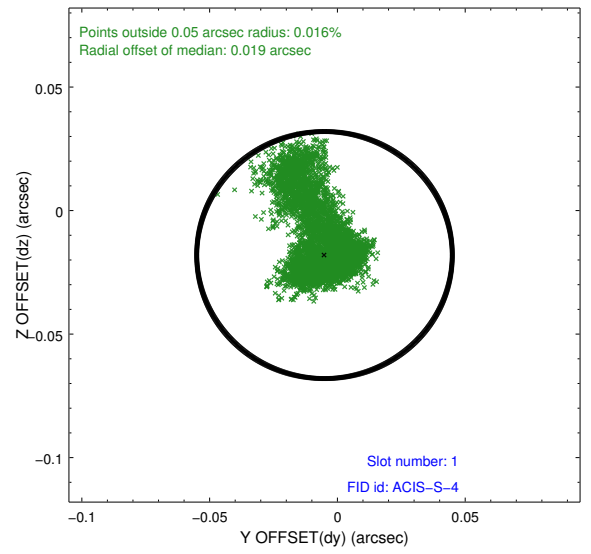
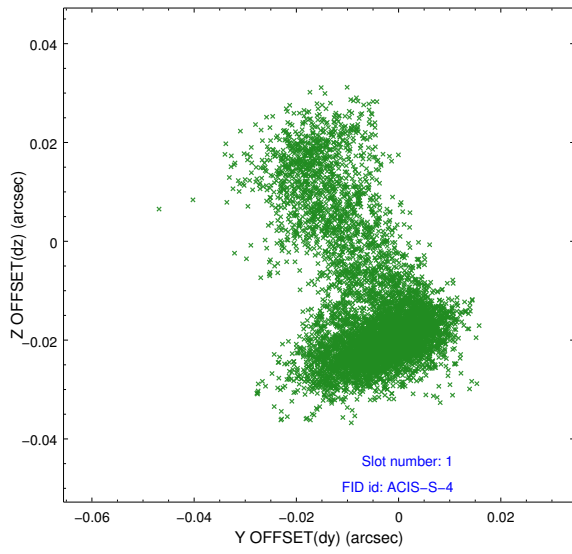


2.5 FID Slots

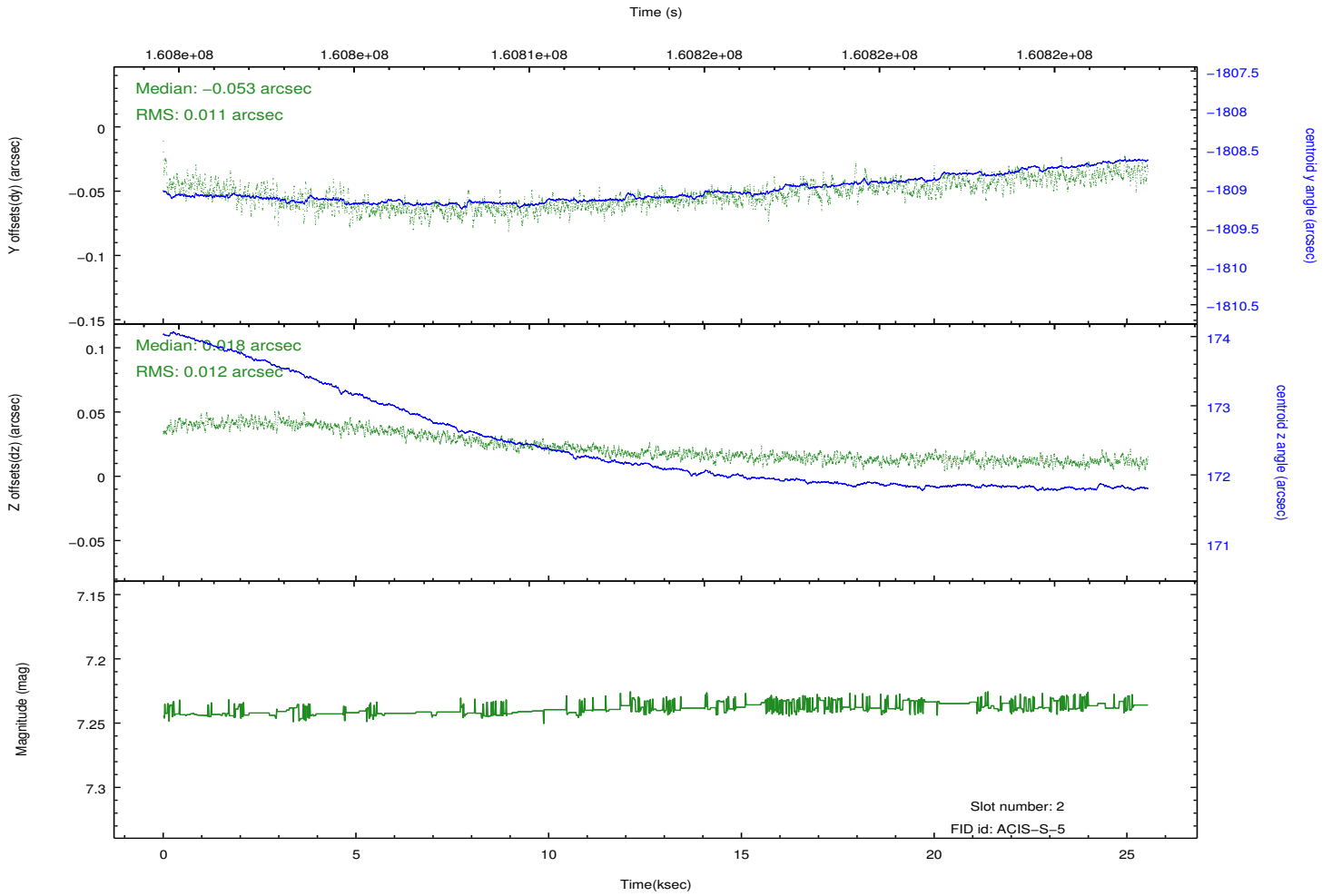
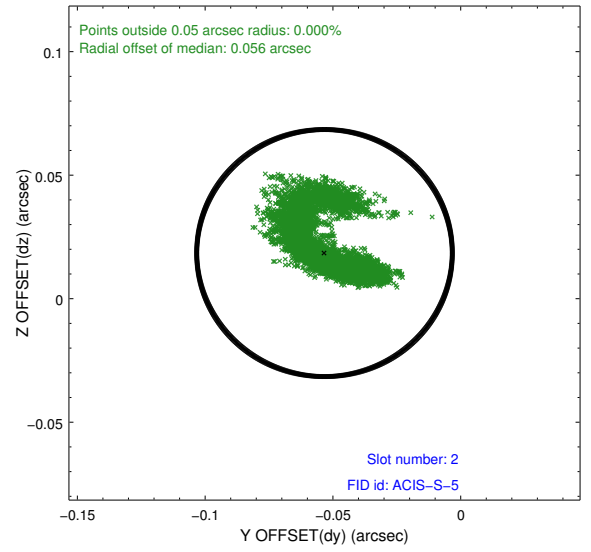
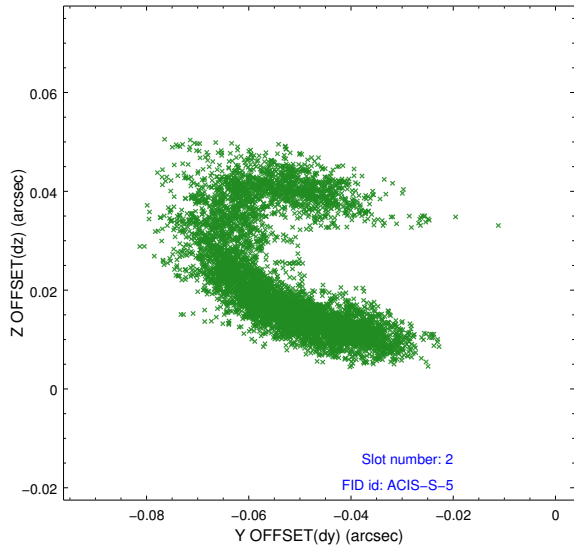
2.5.1 Slot 0



2.5.2 Slot 1



2.5.3 Slot 2



A Summary

A.1 Status

V&V Scientist	Jen Lauer
V&V Date (YYYY-MM-DD)	2012.11.05
V&V Edition	1
V&V Disposition and Status	OK
V&V Charge Time	25.113

A.2 Comments