

V&V Reference Report

L2 ASCDS Version : 8.4.5

Observation 3851 - L2 Version 3
Chandra X-Ray Center

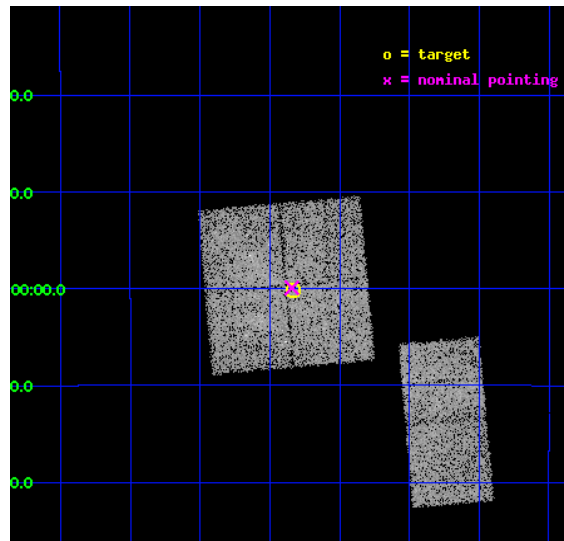
L2 Processing Date : Oct 23 2012

Contents

1	Front	2
2	OBI	3
2.1	OBI	3
2.1.1	Images	3
2.1.2	Bias	3
2.1.3	Parameters	4
2.1.4	Events	4
2.2	Compared Parameters	5
2.3	Aspect	6
2.4	Star Slots	9
2.4.1	Slot 3	9
2.4.2	Slot 4	10
2.4.3	Slot 5	11
2.4.4	Slot 6	12
2.4.5	Slot 7	13
2.5	FID Slots	14
2.5.1	Slot 0	14
2.5.2	Slot 1	15
2.5.3	Slot 2	16
A	Summary	17
A.1	Status	17
A.2	Comments	17

1 Front

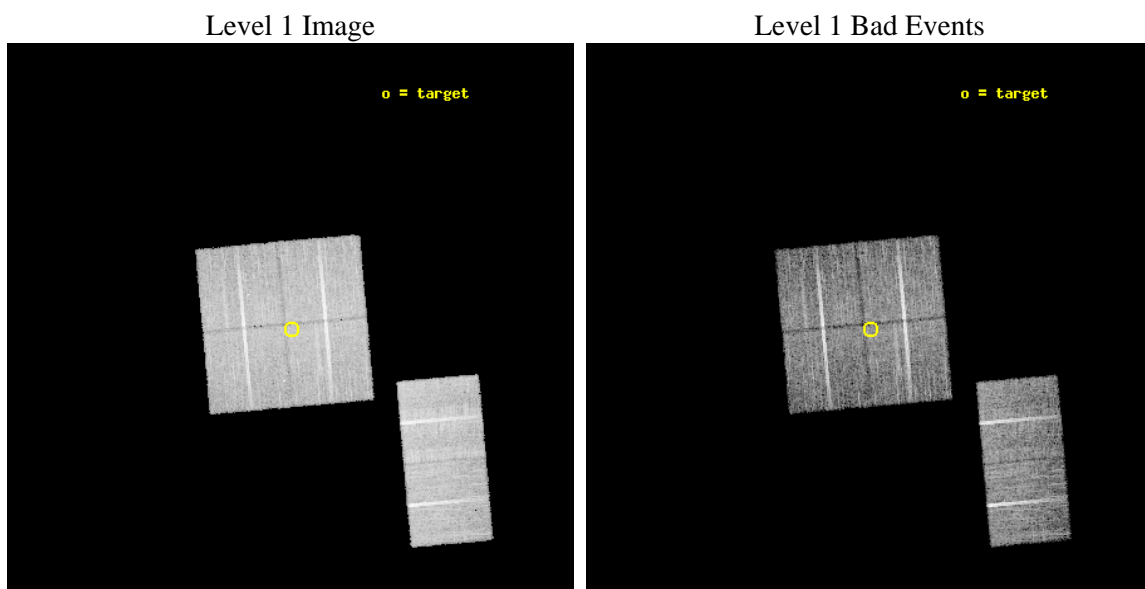
seq_num	500330	Sequence number
obs_id	3851	Observation id
title	GALACTIC GEV GEMINGAS: POINT SOURCE PARAMETERS AND COMPACT PWN	Pro
observer	Prof. Roger Romani	Principal investigator
object	GEV J1825-1310	Source name
dtcycle	0	
cycle	P	events from which exps? Prim/Second/Both
ra_targ	276.458333	Observer's specified target RA [deg]
dec_targ	-13.002778	Observer's specified target Dec [deg]
ra_nom	276.46055951118	Nominal RA [deg]
dec_nom	-12.998708435611	Nominal Dec [deg]
roll_nom	84.924613879109	Nominal Roll [deg]
revision	3	Processing version of data
ontime	15126.39994365	Sum of GTIs [s]
livetime	14934.860359539	Livetime [s]
ontime0	15123.15898338	Sum of GTIs [s]
ontime1	15126.39994365	Sum of GTIs [s]
ontime2	15123.158953458	Sum of GTIs [s]
ontime3	15126.39994365	Sum of GTIs [s]
ontime8	15126.39994365	Sum of GTIs [s]
ontime9	15126.39994365	Sum of GTIs [s]
l2events	49607	Number of level 2 events



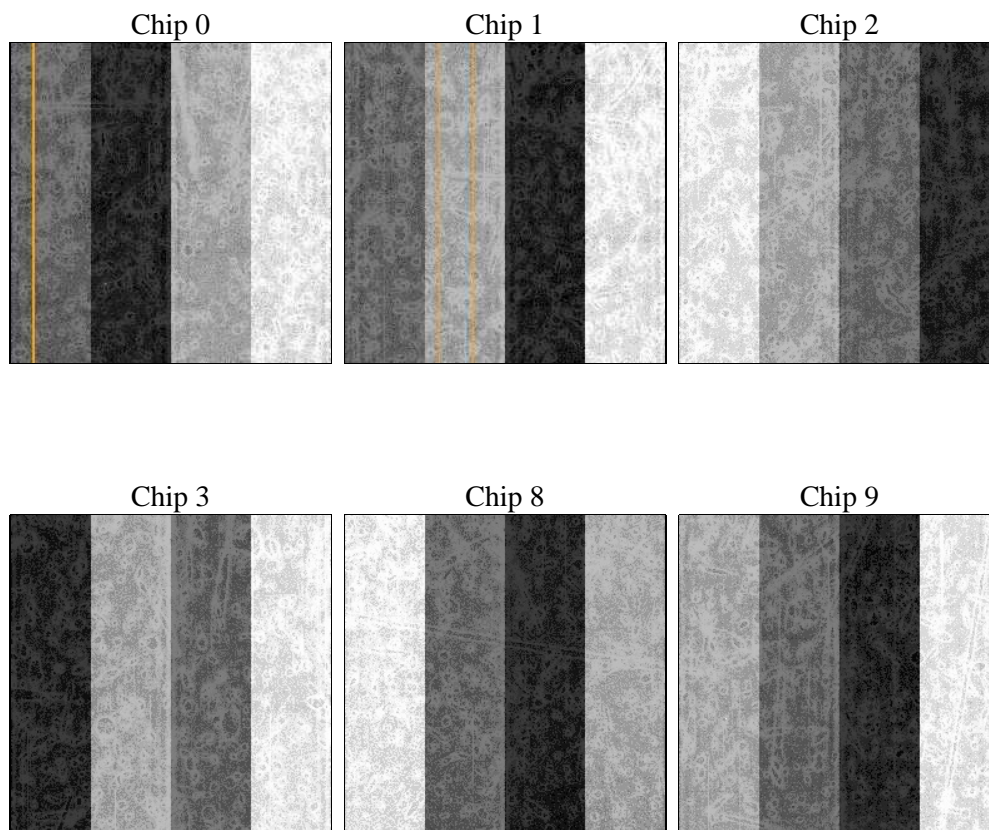
2 OBI

2.1 OBI

2.1.1 Images



2.1.2 Bias



2.1.3 Parameters

obi_num	0	Obi number	sched_exp_time	15000.000000	[s] Scheduled observation exposure time
ascdsver	8.4.5	Processing system revision	ontime	15126.39994365	Sum of GTIs [s]
caldbver	4.5.2	 	ontime0	15123.15898338	Sum of GTIs [s]
date	2012-10-23T09:11:24	Date and time of file creation	ontime1	15126.39994365	Sum of GTIs [s]
revision	3	Processing version of data	ontime2	15123.158953458	Sum of GTIs [s]
			ontime3	15126.39994365	Sum of GTIs [s]
			ontime8	15126.39994365	Sum of GTIs [s]
			ontime9	15126.39994365	Sum of GTIs [s]
			l1events	483763	Number of level 1 events

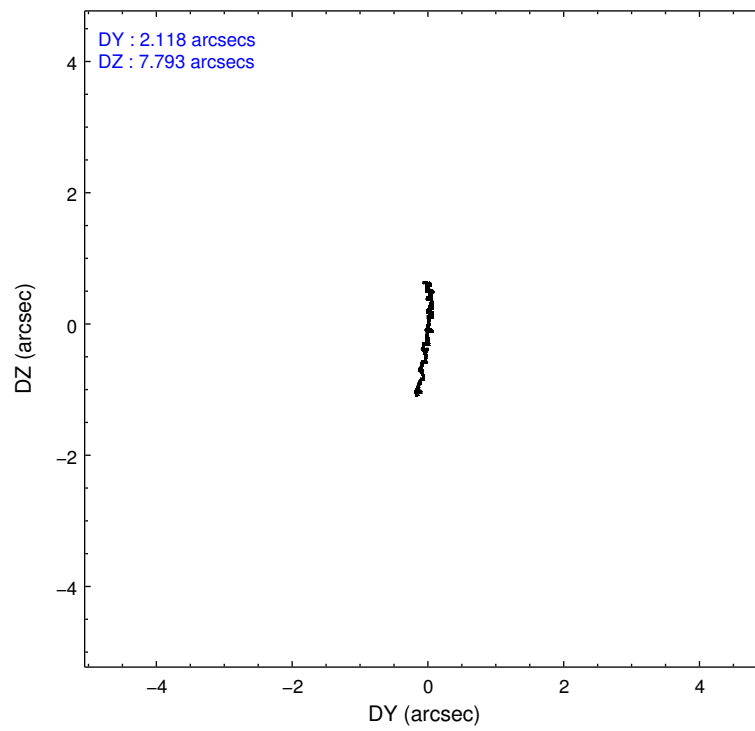
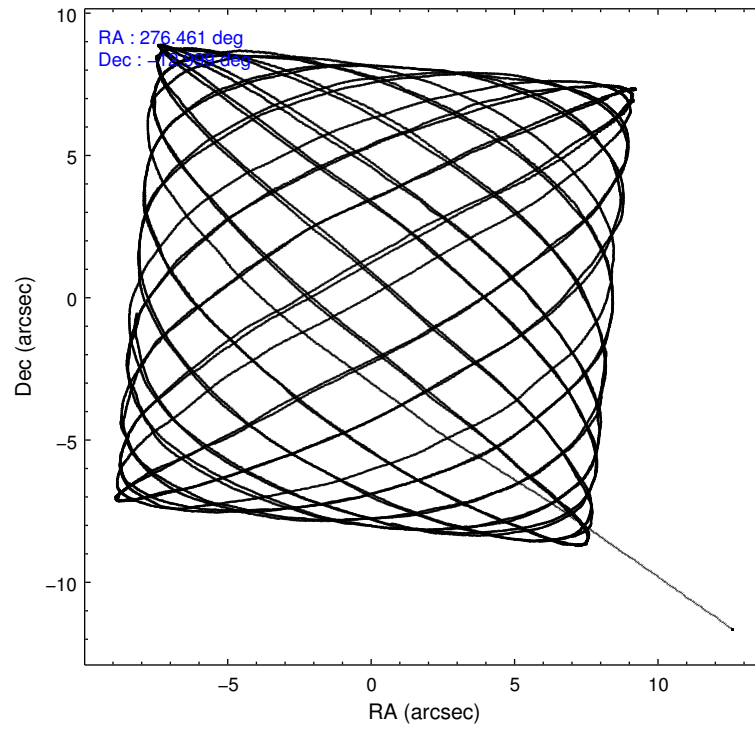
2.1.4 Events

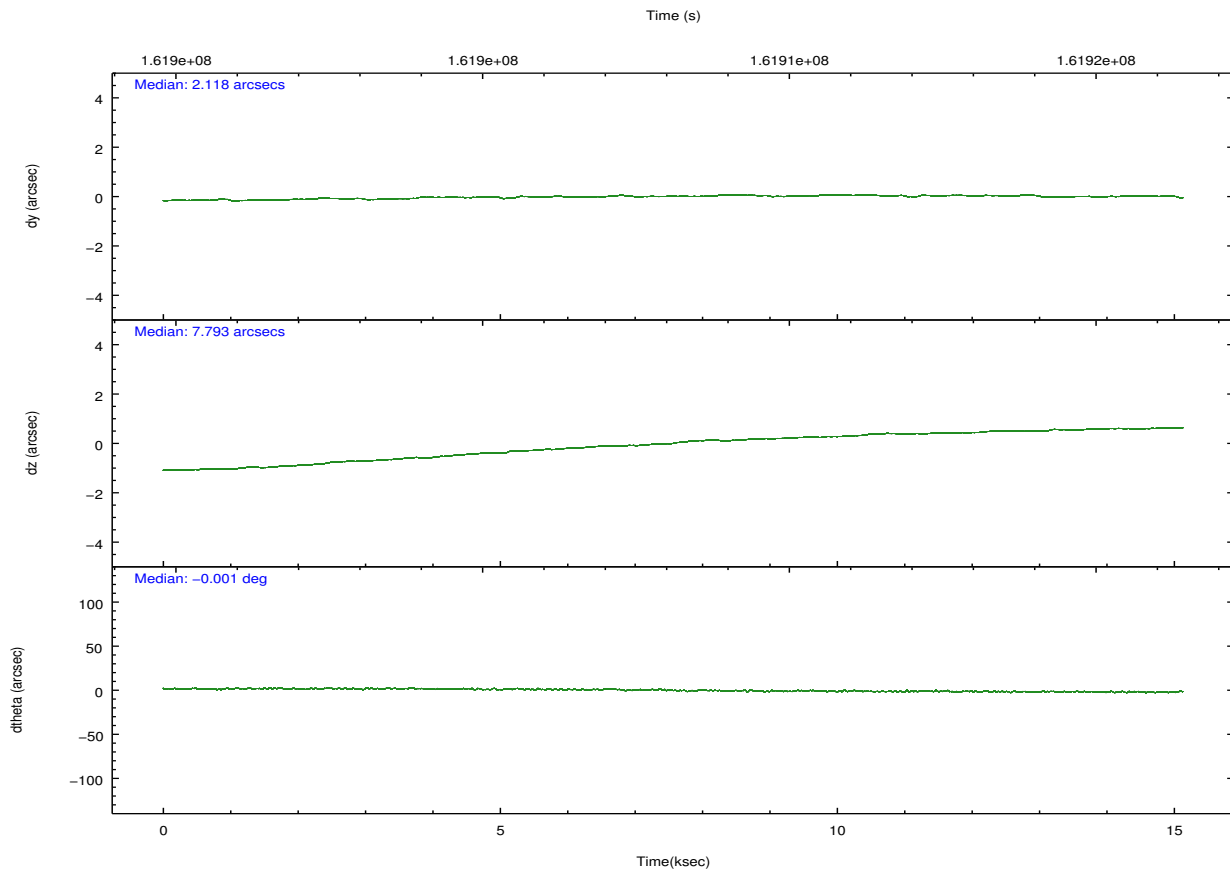
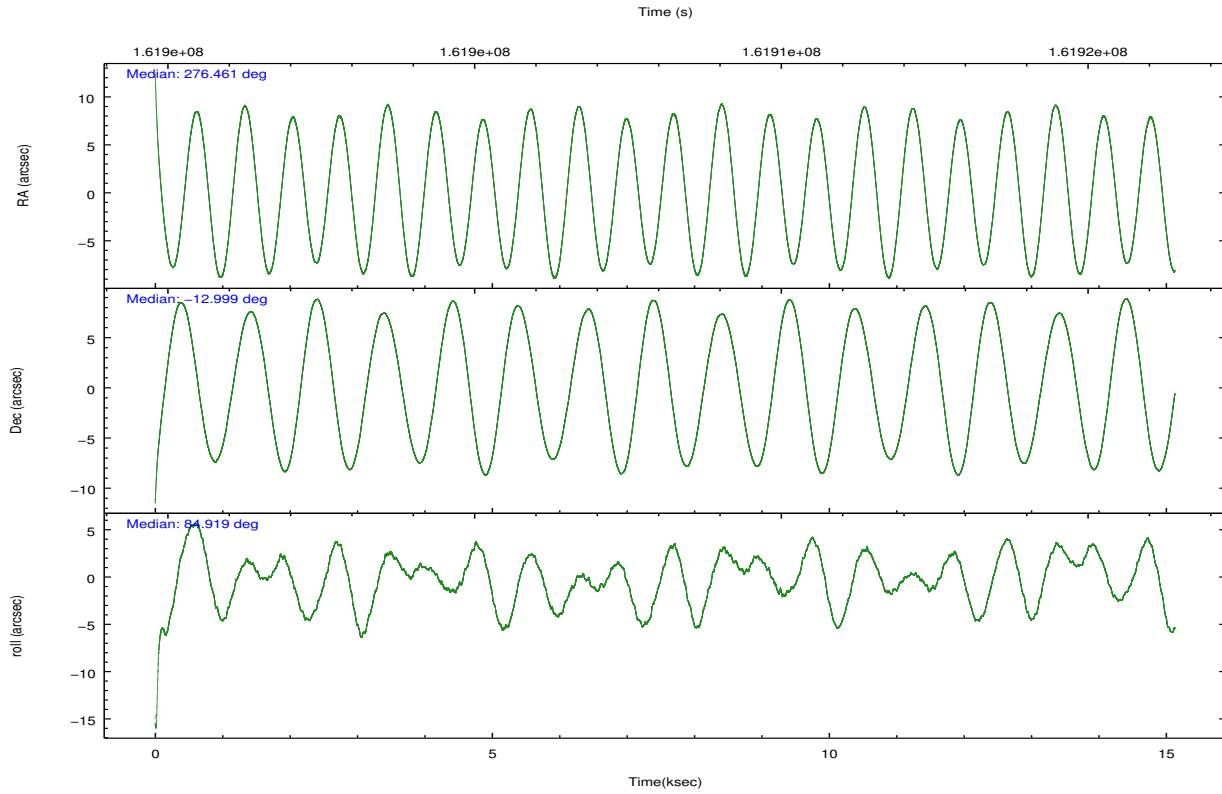
	ccd 0	ccd 1	ccd 2	ccd 3	ccd 8	ccd 9		ccd 0	ccd 1	ccd 2	ccd 3	ccd 8	ccd 9
level 1 events	74093	71752	82222	79517	98224	77955	grade 0 events	4896	5047	4372	4687	7809	3668
rejected events	63911	61318	73146	69995	74618	69229		6%	7%	5%	5%	7%	4%
rejected %	86%	85%	88%	88%	75%	88%	grade 1 events	49	32	48	32	71	40
								0%	0%	0%	0%	0%	0%
							grade 2 events	2057	1937	1858	1735	5017	1767
								2%	2%	2%	2%	5%	2%
							grade 3 events	1021	1043	906	929	2712	899
								1%	1%	1%	1%	2%	1%
							grade 4 events	936	982	854	940	2521	940
								1%	1%	1%	1%	2%	1%
							grade 5 events	2209	2365	1995	2525	3733	2846
								2%	3%	2%	3%	3%	3%
							grade 6 events	1469	1640	1287	1416	5985	1613
								1%	2%	1%	1%	6%	2%
							grade 7 events	61456	58706	70902	67253	70376	66182
								82%	81%	86%	84%	71%	84%

2.2 Compared Parameters

Parameter	Planned	Actual	Parameter	Planned	Actual
Instrument	ACIS	ACIS	Obspar format version number	7	7
Detector	ACIS-012389	ACIS-012389	Obspar file type	PREDICTED	ACTUAL
Grating	NONE	NONE	Obspar update status	NONE	UPDATED
Data mode	VFAINT	VFAINT	Number of optional ACIS chips dropped	0	0
Observation mode	POINTING	POINTING	On-chip summing requested	N	N
[deg] Pointing RA	276.472517	276.4605595111753	Subarray requested	NONE	NONE
[deg] Pointing Dec	-13.023468	-12.99870843561087	Alternating exposures requested	N	N
[deg] Pointing Roll	84.718635	84.92461387910917	[s] Primary exposure time	0.000000	3.2
[mm] SIM focus pos	-0.782348	-0.7809083437167272			
[mm] SIM defocus	0	0.001439871863259334			
[mm] SIM translation stage pos	-233.592463	-233.5874344608287			
[mm] SIM translation stage offset	0	-0.005018542100998502			
[s] Observation start time (MET)	161900672.184000	161899488.34049			
Observation start date	2003-02-17T20:23:28	2003-02-17T20:04:48			
[s] Observation end time (MET)	161915672.184000	161916102.56618			
Observation end date	2003-02-18T00:33:28	2003-02-18T00:41:42			
Read mode	TIMED	TIMED			

2.3 Aspect



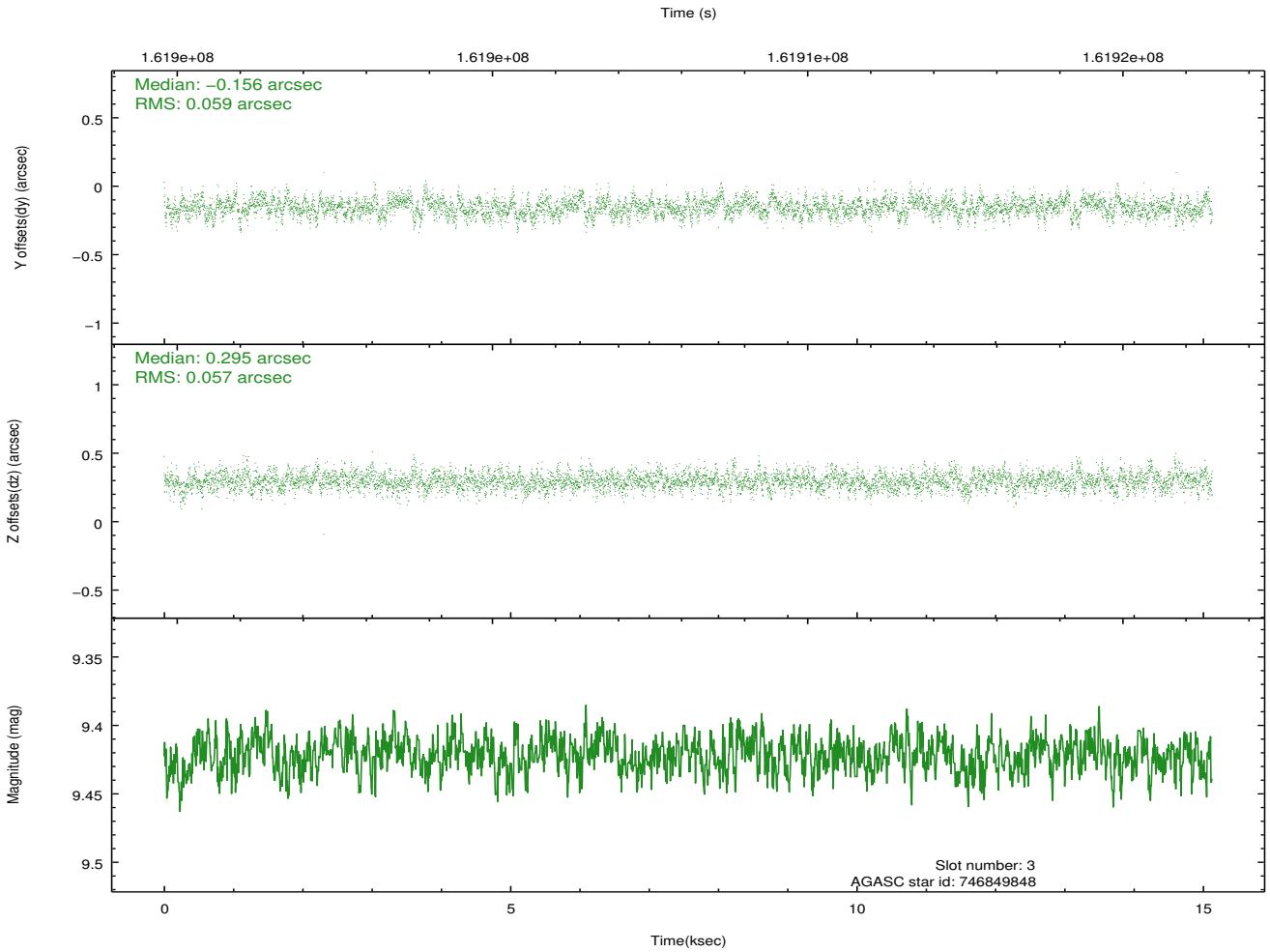
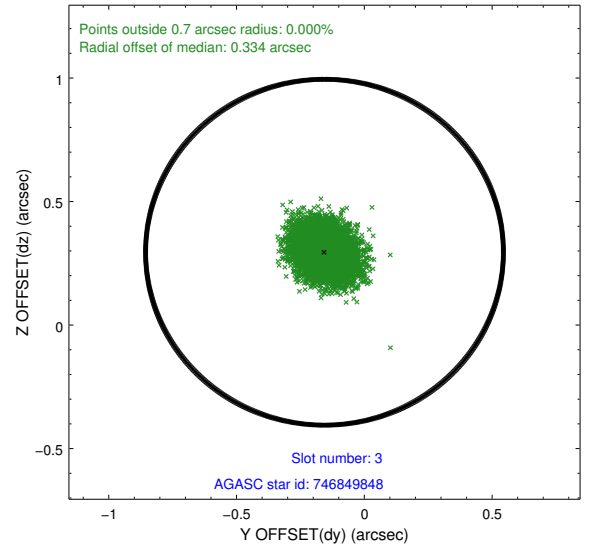
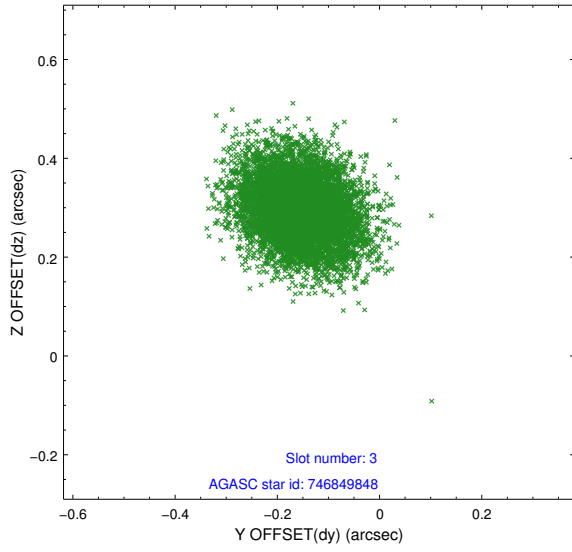


Slot Statistics

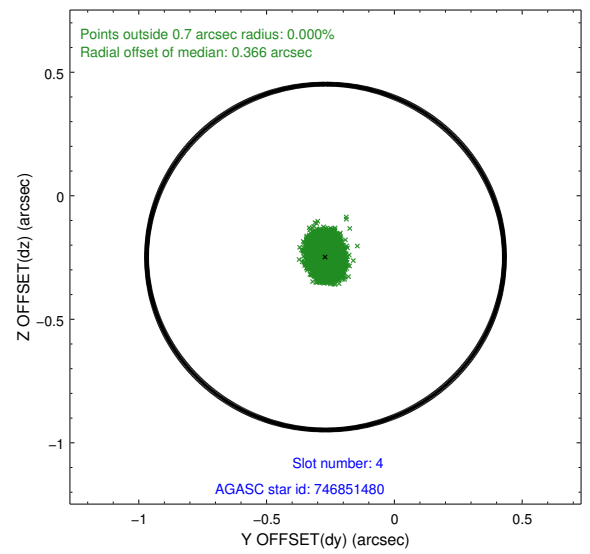
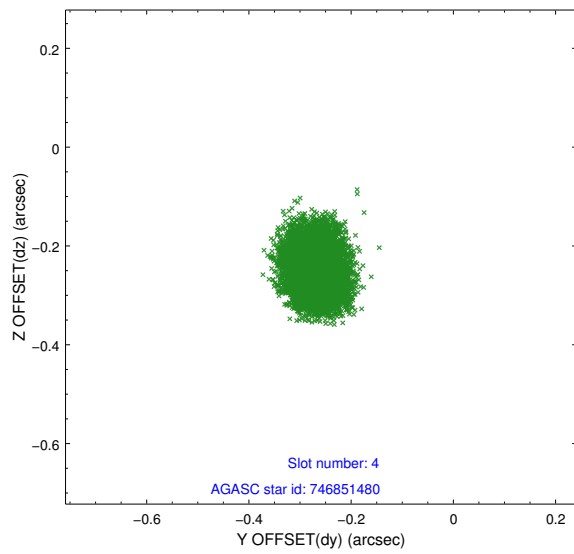
slot	status	id	mag	n_pts	med_dy	med_dz	dr1	dr2	ra	dec	mean_y	mean_z
0	FID	ACIS-I-1	7.24	3691	-0.011	0.045	0.027	0.038	0.000000	0.000000	937.69	-831.08
1	FID	ACIS-I-5	7.24	3689	-0.057	0.044	0.012	0.018	0.000000	0.000000	-1810.26	1066.30
2	FID	ACIS-I-6	7.26	3690	-0.023	-0.018	0.017	0.030	0.000000	0.000000	402.94	1711.05
3	GUIDE	746849848	9.42	7379	-0.156	0.295	0.086	0.144	277.122496	-12.799904	1008.80	-2197.71
4	GUIDE	746851480	7.28	7382	-0.269	-0.248	0.056	0.087	275.998802	-12.584966	1417.04	1802.33
5	GUIDE	746876560	9.24	7381	-0.023	-0.065	0.095	0.152	276.166679	-12.675099	1149.48	1185.48
6	GUIDE	747384584	7.49	7382	0.140	-0.203	0.062	0.106	275.823210	-13.594301	-2258.18	2072.99
7	GUIDE	747387816	9.05	7380	0.304	0.222	0.082	0.132	276.668821	-13.651894	-2189.57	-891.65

2.4 Star Slots

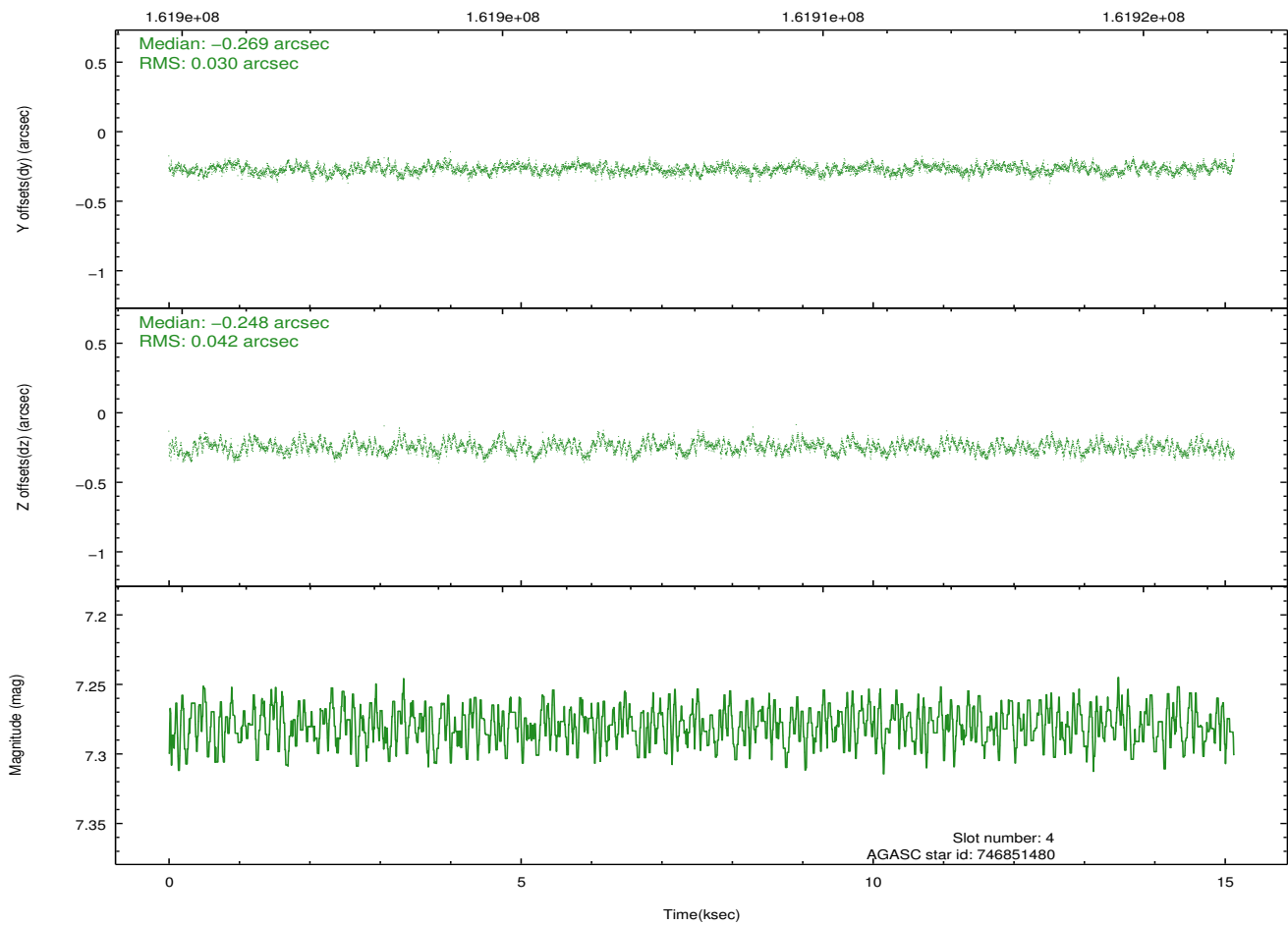
2.4.1 Slot 3



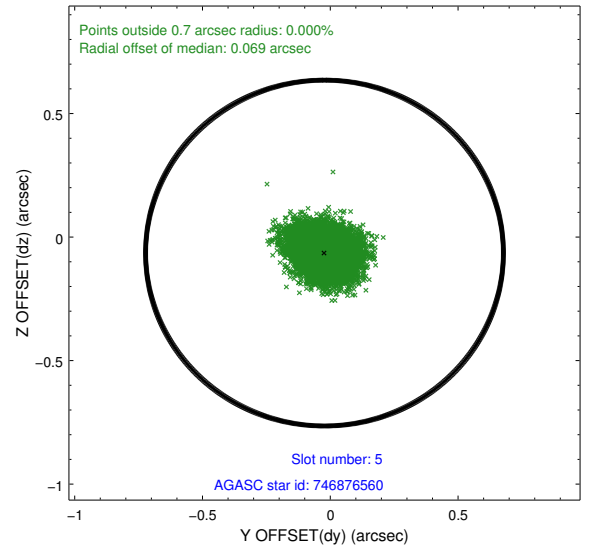
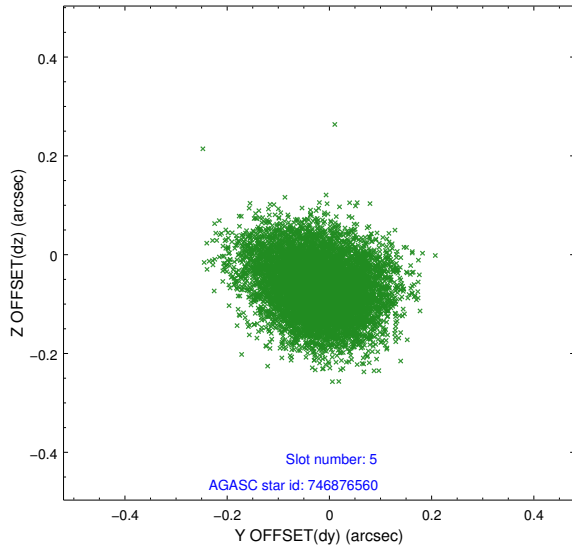
2.4.2 Slot 4



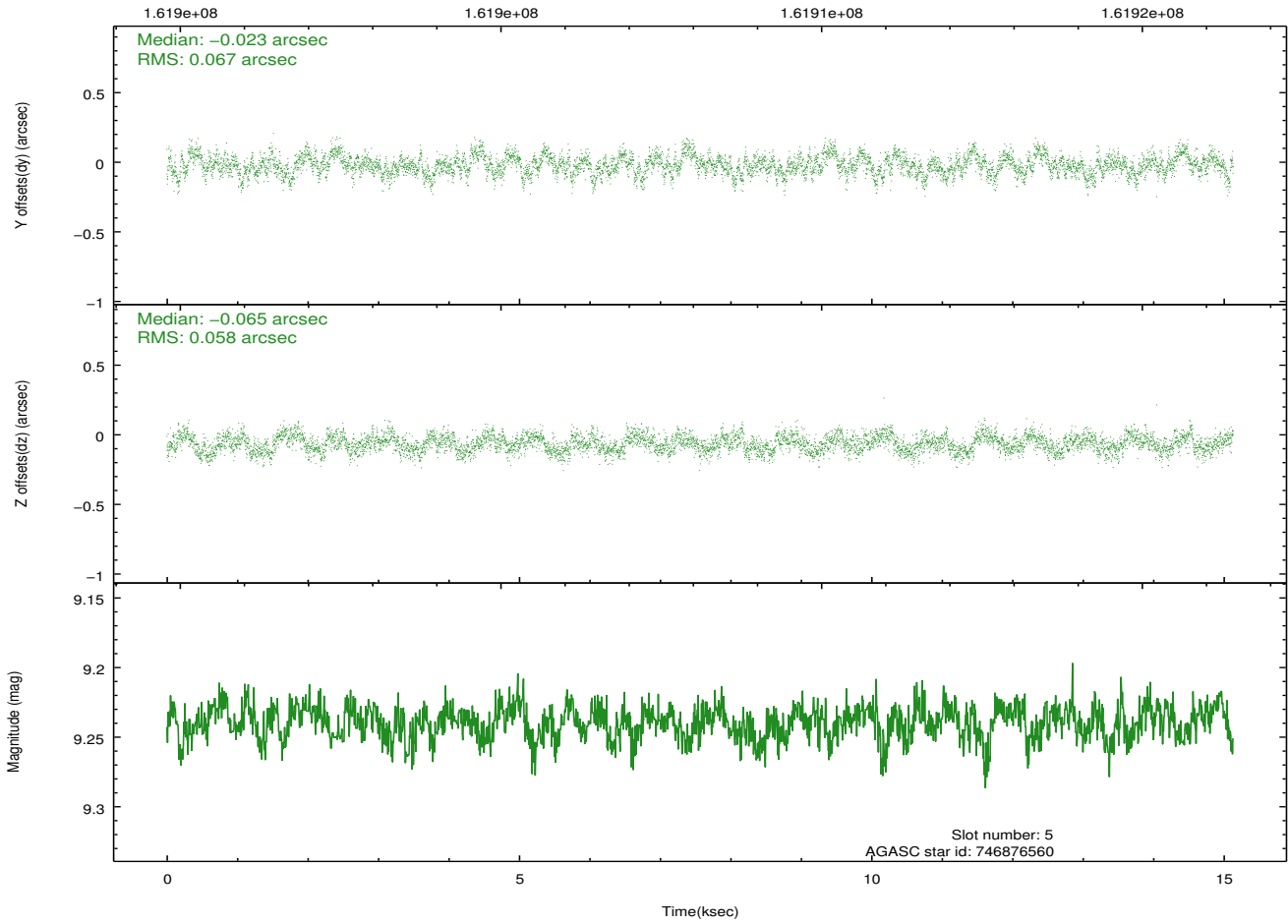
Time (s)



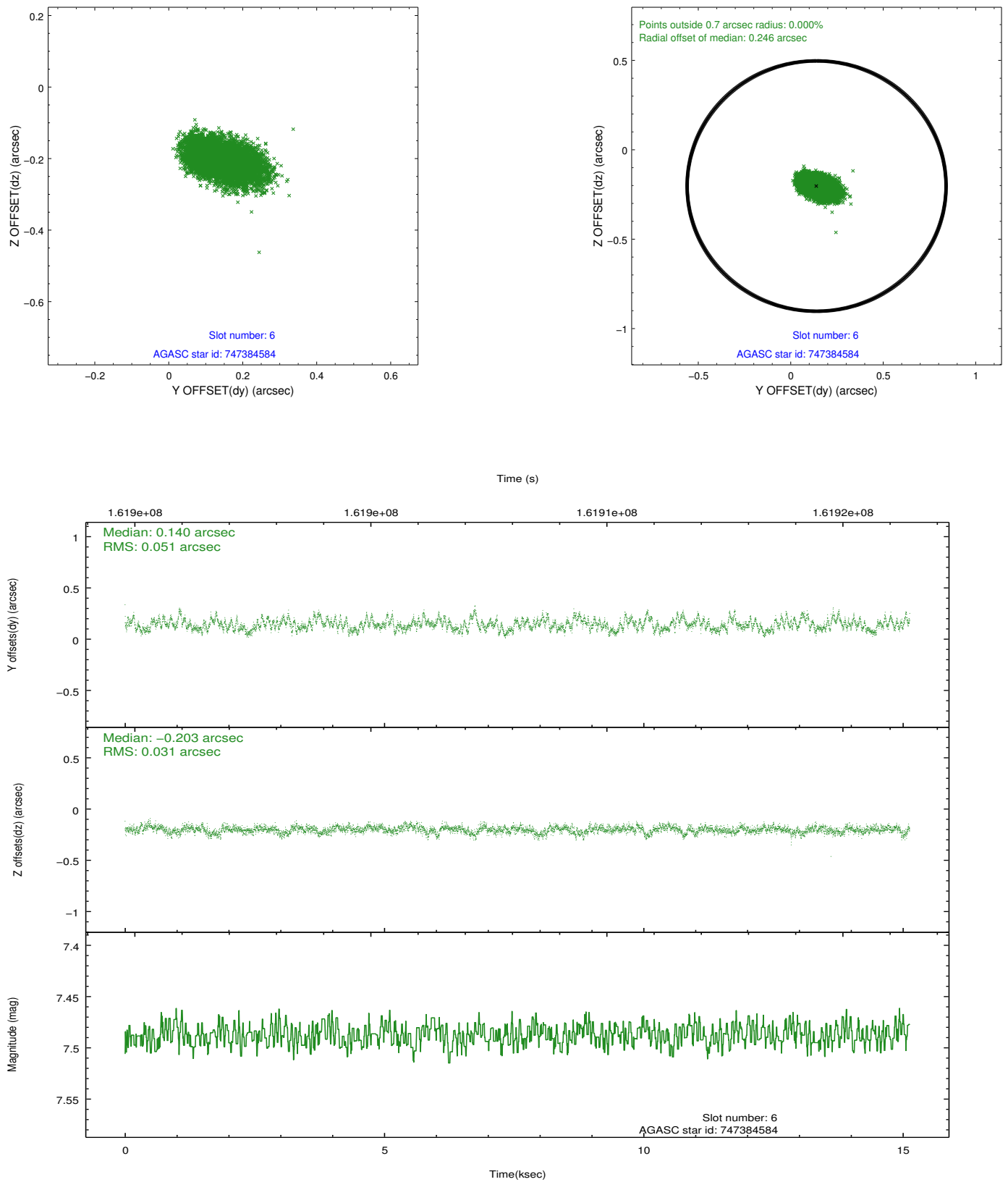
2.4.3 Slot 5



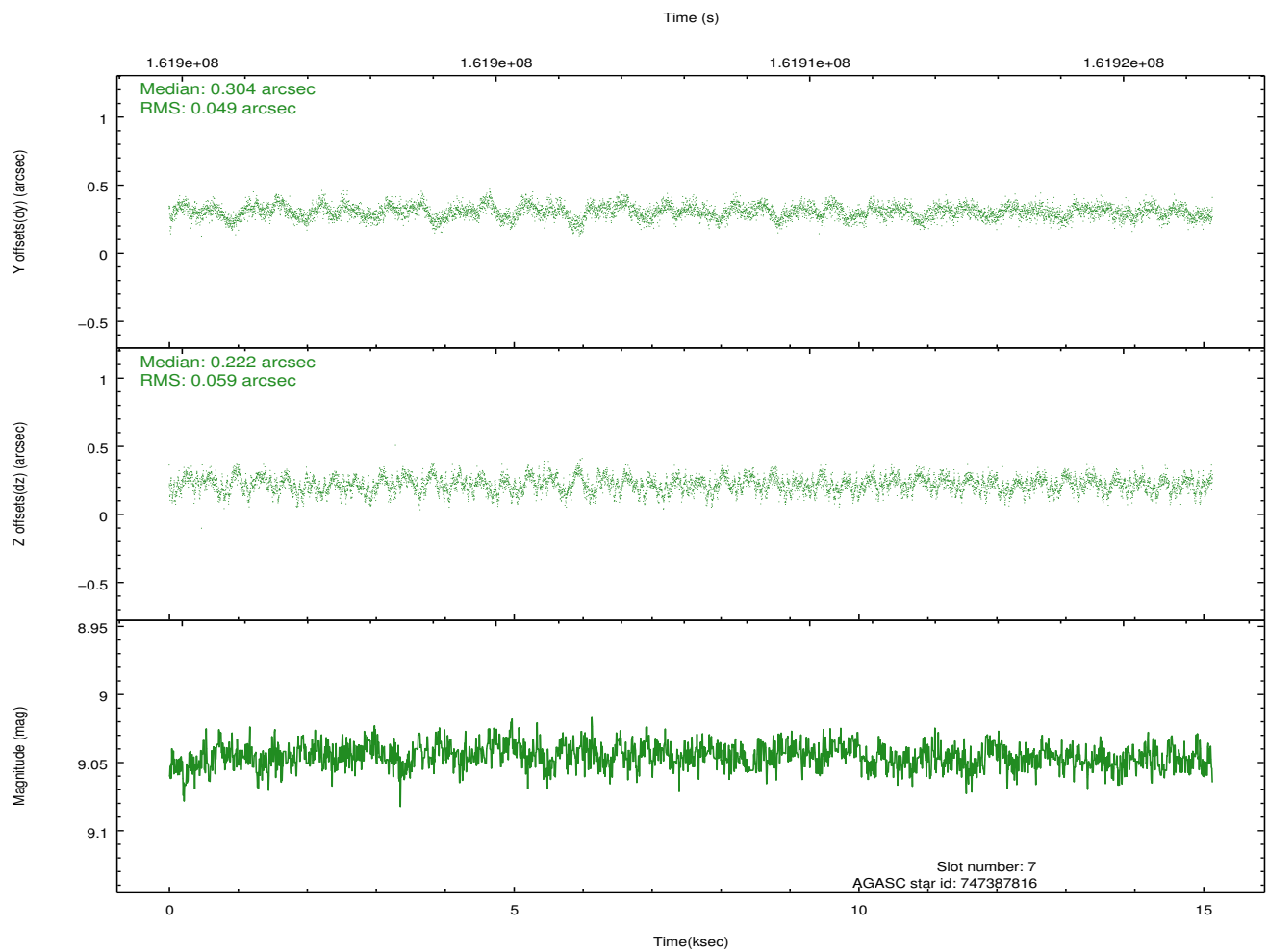
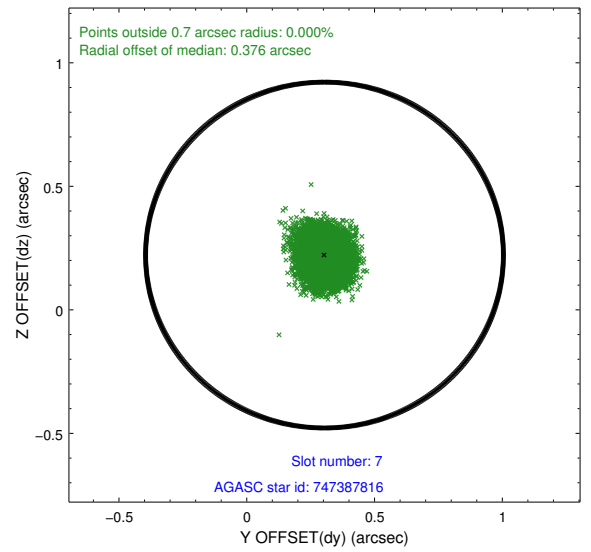
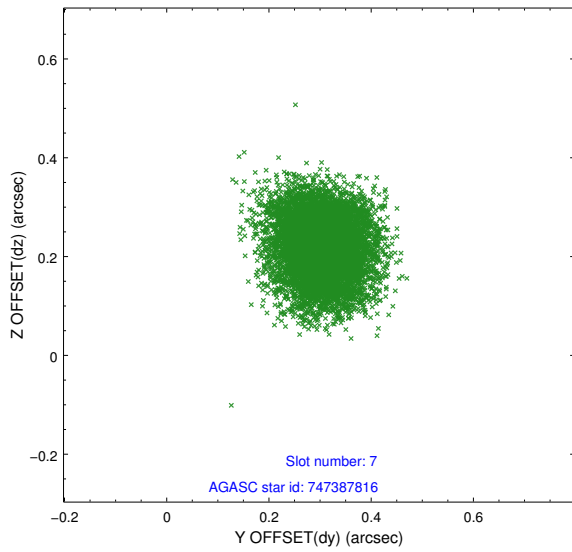
Time (s)



2.4.4 Slot 6

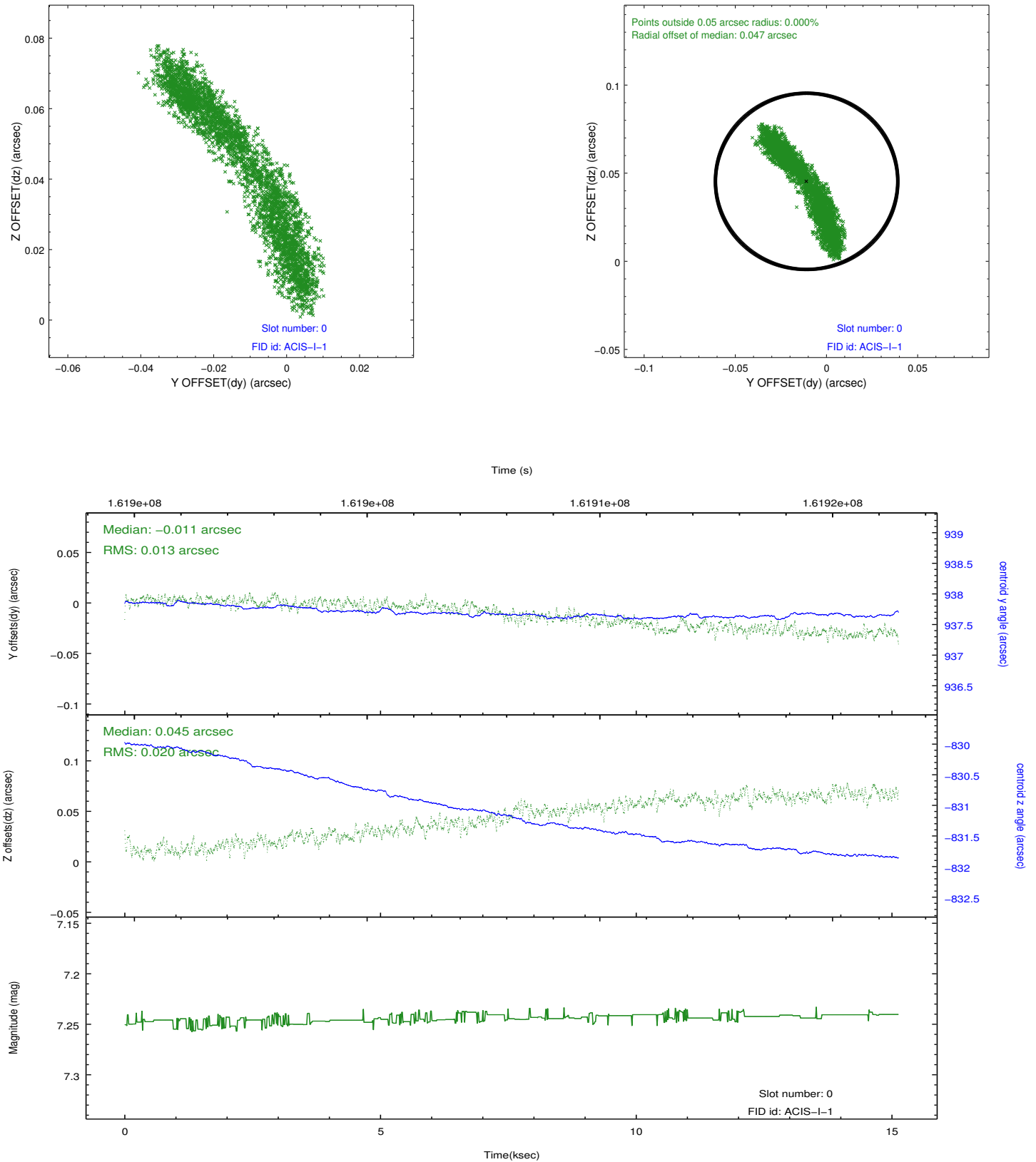


2.4.5 Slot 7

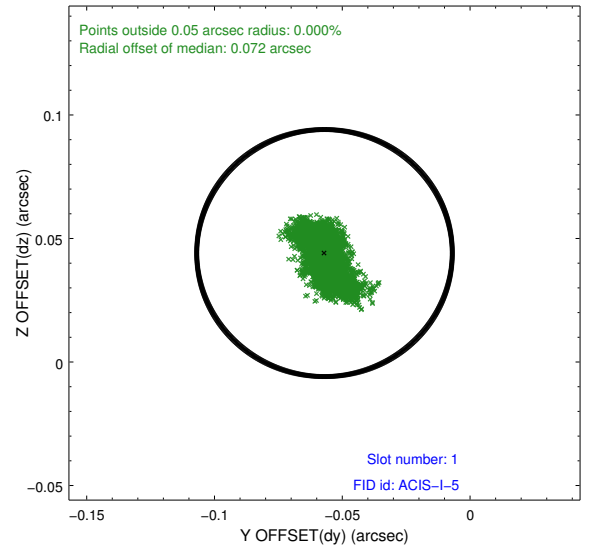
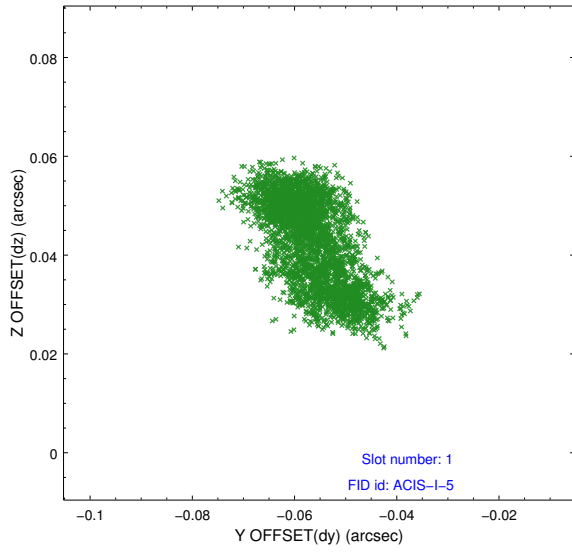


2.5 FID Slots

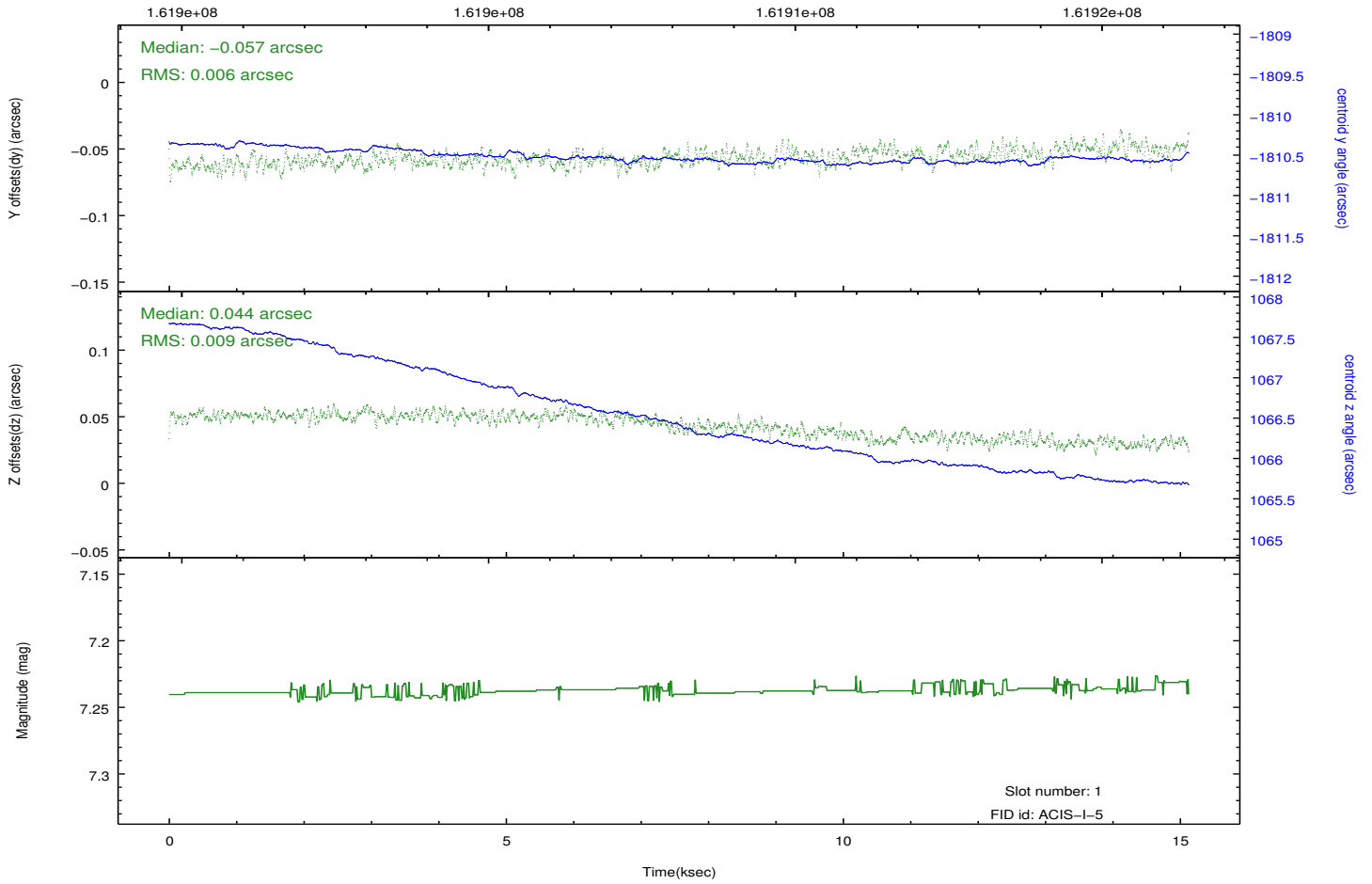
2.5.1 Slot 0



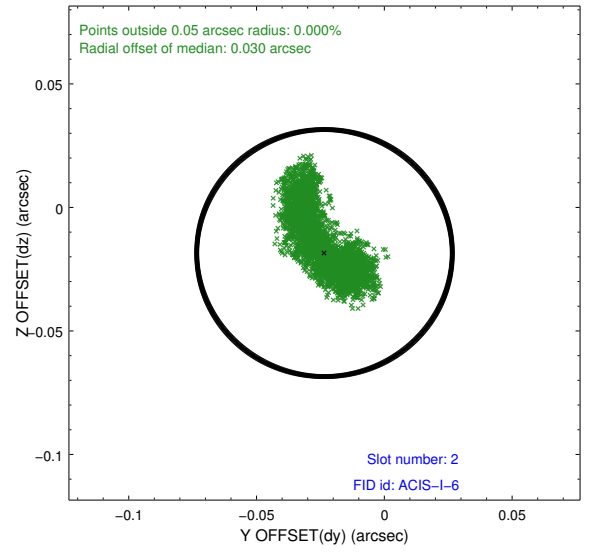
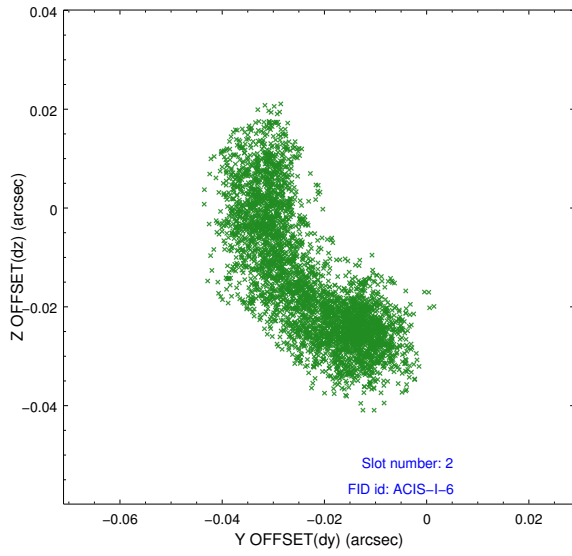
2.5.2 Slot 1



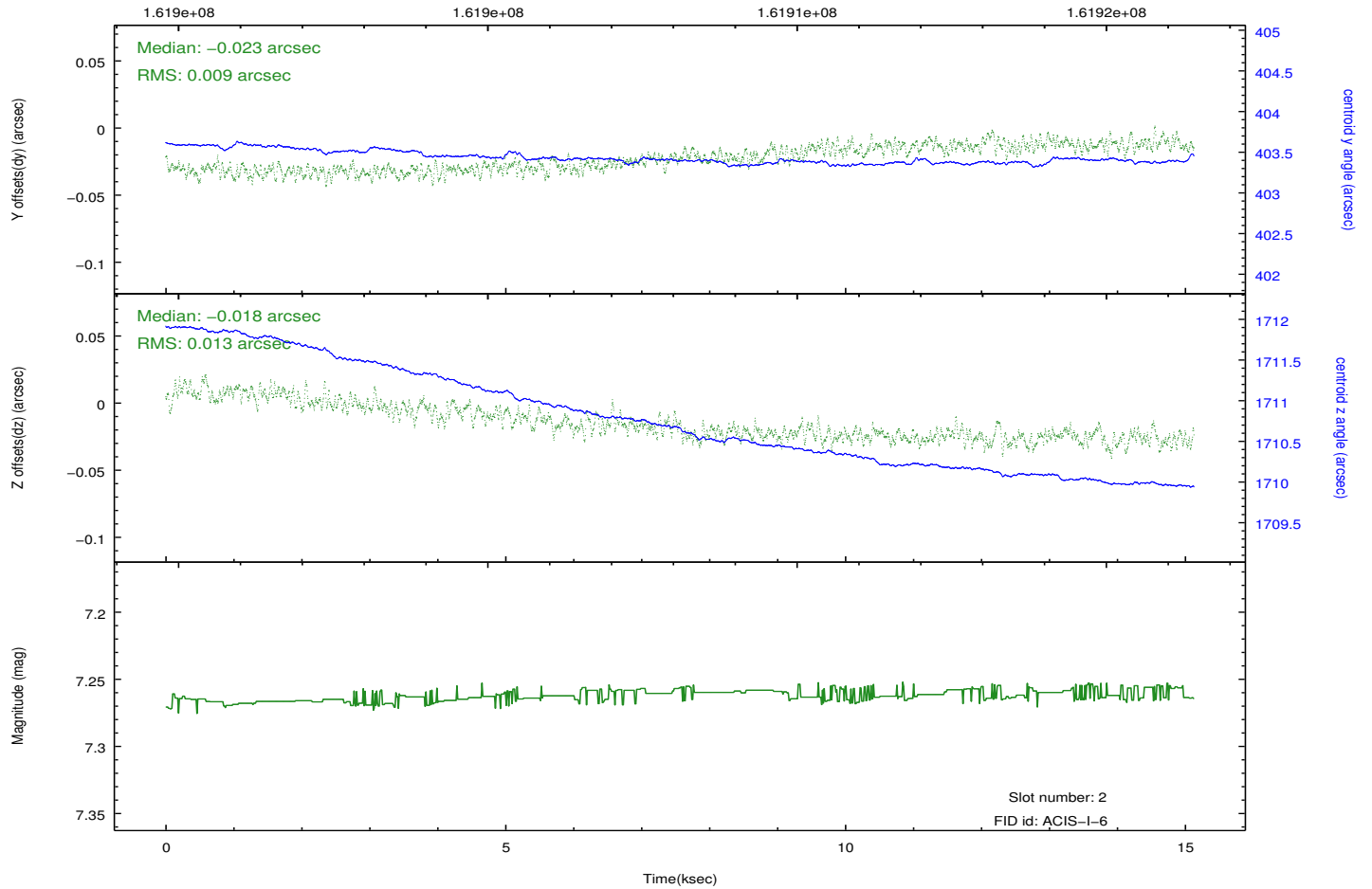
Time (s)



2.5.3 Slot 2



Time (s)



A Summary

A.1 Status

V&V Scientist	Jen Lauer
V&V Date (YYYY-MM-DD)	2012.11.06
V&V Edition	1
V&V Disposition and Status	OK
V&V Charge Time	15.126

A.2 Comments

Roll preference met.