

# V&V Reference Report

## L2 ASCDS Version : 8.4.5

Observation 4061 - L2 Version 5  
Chandra X-Ray Center

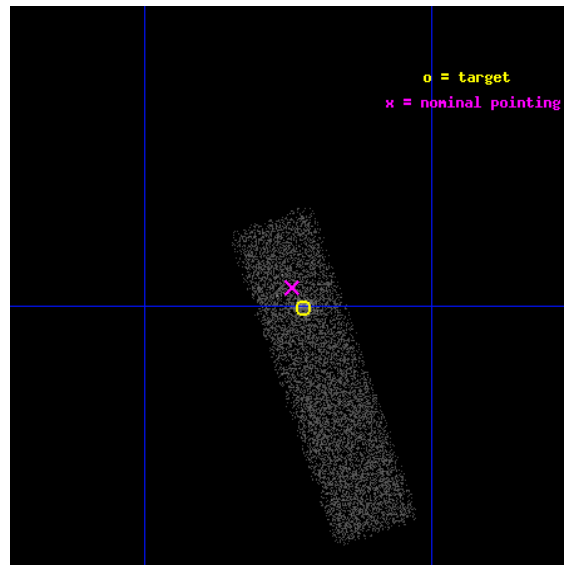
L2 Processing Date : Jan 17 2013

## Contents

<b>1</b>	<b>Front</b>	<b>2</b>
<b>2</b>	<b>OBI</b>	<b>3</b>
2.1	OBI . . . . .	3
2.1.1	Images . . . . .	3
2.1.2	Bias . . . . .	3
2.1.3	Parameters . . . . .	4
2.1.4	Events . . . . .	4
2.2	Compared Parameters . . . . .	5
2.3	Aspect . . . . .	6
2.4	Star Slots . . . . .	9
2.4.1	Slot 4 . . . . .	9
2.4.2	Slot 5 . . . . .	10
2.4.3	Slot 6 . . . . .	11
2.4.4	Slot 7 . . . . .	12
2.5	FID Slots . . . . .	13
2.5.1	Slot 0 . . . . .	13
2.5.2	Slot 1 . . . . .	14
2.5.3	Slot 2 . . . . .	15
<b>A</b>	<b>Summary</b>	<b>16</b>
A.1	Status . . . . .	16
A.2	Comments . . . . .	16

# 1 Front

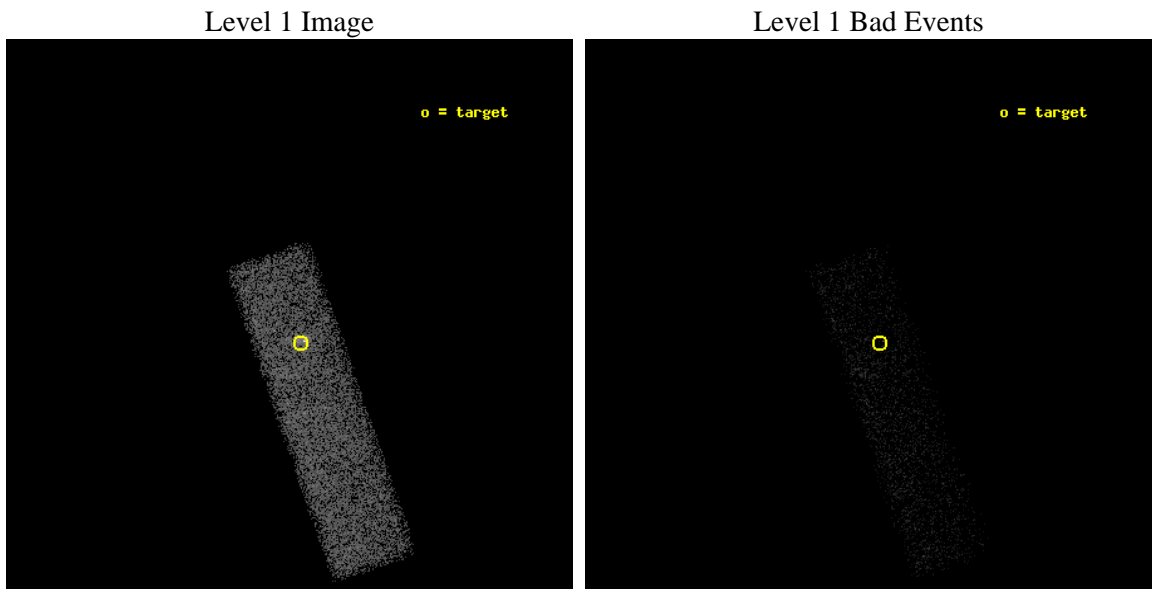
seq_num	700740	Sequence number
obs_id	4061	Observation id
title	ELUSIVE ACTIVE GALACTIC NUCLEI IN STARBURST GALAXIES	Proposal titl
observer	DR. ROBERTO MAIOLINO	Principal investigator
object	NGC4691	Source name
dtycycle	0	&#160
cycle	P	events from which exps? Prim/Second/Both
ra_targ	192.05625	Observer's specified target RA [deg]
dec_targ	-3.333889	Observer's specified target Dec [deg]
ra_nom	192.06097562109	Nominal RA [deg]
dec_nom	-3.3255157316938	Nominal Dec [deg]
roll_nom	70.791802500506	Nominal Roll [deg]
revision	5	Processing version of data
ontime	10785.600160718	Sum of GTIs [s]
livetime	10259.298164861	Livetime [s]
ontime7	10785.600160718	Sum of GTIs [s]
l2events	11954	Number of level 2 events



## 2 OBI

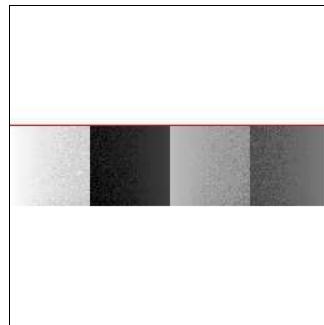
### 2.1 OBI

#### 2.1.1 Images



#### 2.1.2 Bias

Chip 7



### 2.1.3 Parameters

obi_num	0	Obi number	sched_exp_time	10100.000000	[s] Scheduled observation exposure time
ascdsver	8.5.1.1	Processing system revision	ontime	10785.600160718	Sum of GTIs [s]
caldbver	4.5.5	&#160	ontime7	10785.600160718	Sum of GTIs [s]
date	2013-01-17T20:56:59	Date and time of file creation	l1events	25544	Number of level 1 events
revision	5	Processing version of data			

### 2.1.4 Events

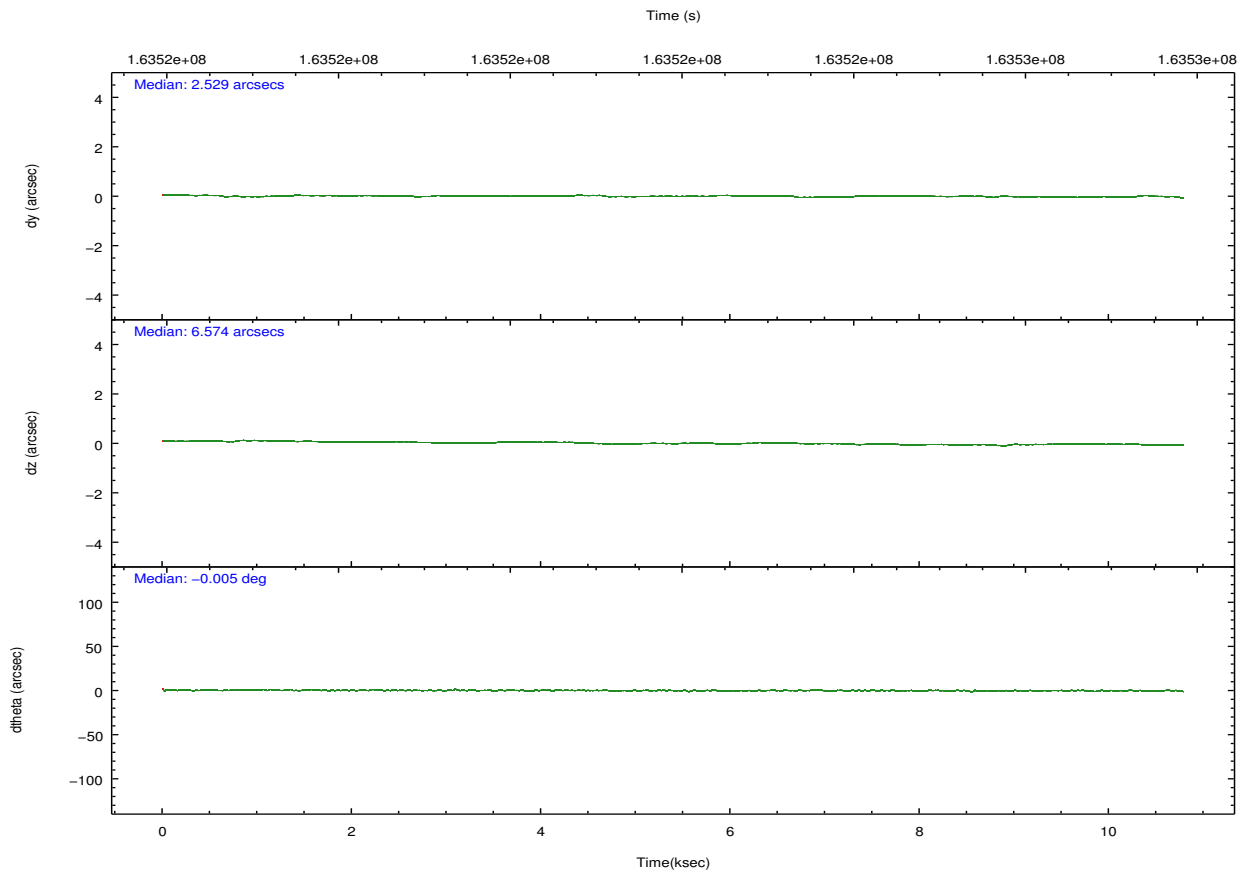
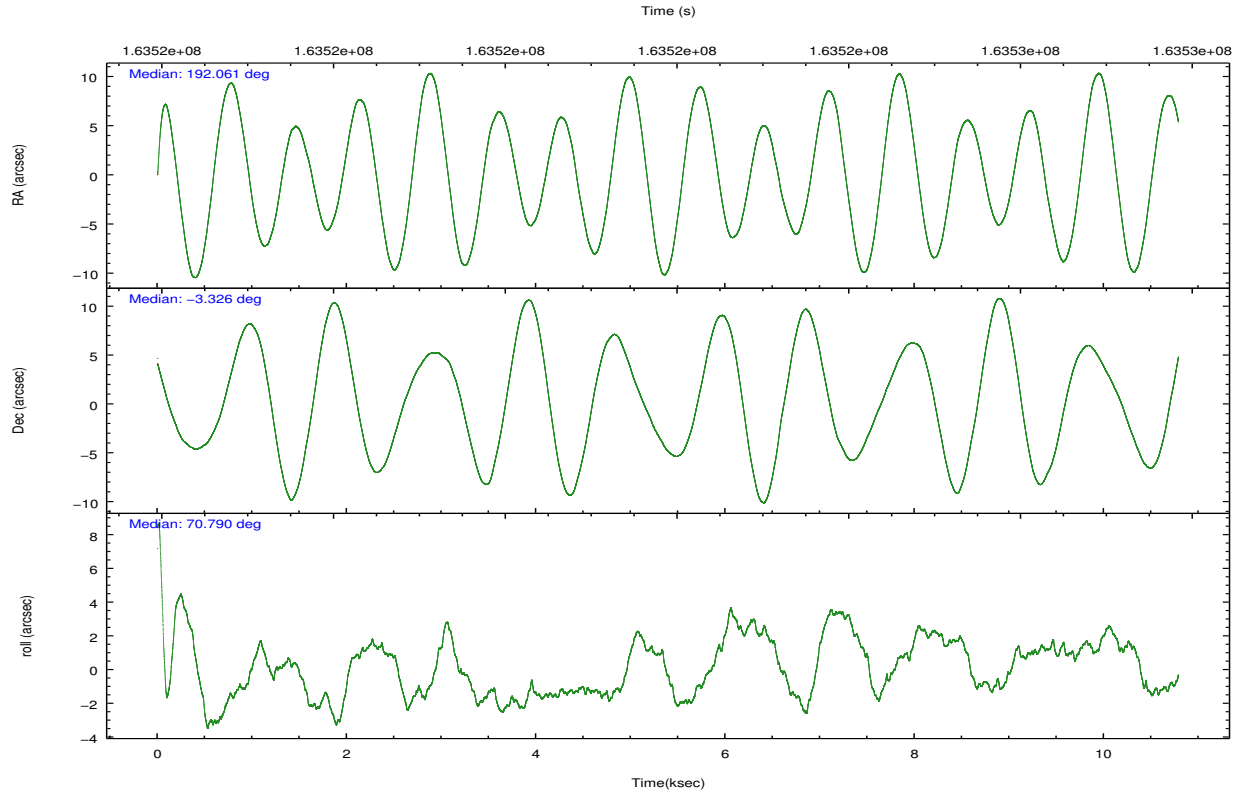
	<b>ccd 7</b>
level 1 events	25544
rejected events	13225
rejected %	<b>51%</b>

	<b>ccd 7</b>
grade 0 events	1669
	6%
grade 1 events	24
	0%
grade 2 events	2593
	10%
grade 3 events	1451
	5%
grade 4 events	1379
	5%
grade 5 events	2302
	9%
grade 6 events	5402
	21%
grade 7 events	10724
	41%

## 2.2 Compared Parameters

Parameter	Planned	Actual	Parameter	Planned	Actual
Instrument	ACIS	ACIS	Obspar format version number	7	7
Detector	ACIS-7	ACIS-7	Obspar file type	PREDICTED	ACTUAL
Grating	NONE	NONE	Obspar update status	NONE	UPDATED
Data mode	FAINT	FAINT	Number of optional ACIS chips dropped	0	0
Observation mode	POINTING	POINTING	On-chip summing requested	N	N
[deg] Pointing RA	192.066460	192.0609756210922	Subarray requested	CUSTOM	1/4
[deg] Pointing Dec	-3.352137	-3.325515731693831	Subarray start row	384	385
[deg] Pointing Roll	70.635478	70.79180250050607	Subarray row count	256	256
[mm] SIM focus pos	-0.684267	-0.6828225247311905	Alternating exposures requested	N	N
[mm] SIM defocus	0	0.001444936568705701	[s] Primary exposure time	0.000000	0.8
[mm] SIM translation stage pos	-190.132523	-190.1425803651734			
[mm] SIM translation stage offset	0	0.01005778216563158			
[s] Observation start time (MET)	163517189.184000	163515978.49595			
Observation start date	2003-03-08T13:25:25	2003-03-08T13:06:18			
[s] Observation end time (MET)	163527289.184000	163528286.18397			
Observation end date	2003-03-08T16:13:45	2003-03-08T16:31:26			
Read mode	TIMED	TIMED			

## 2.3 Aspect

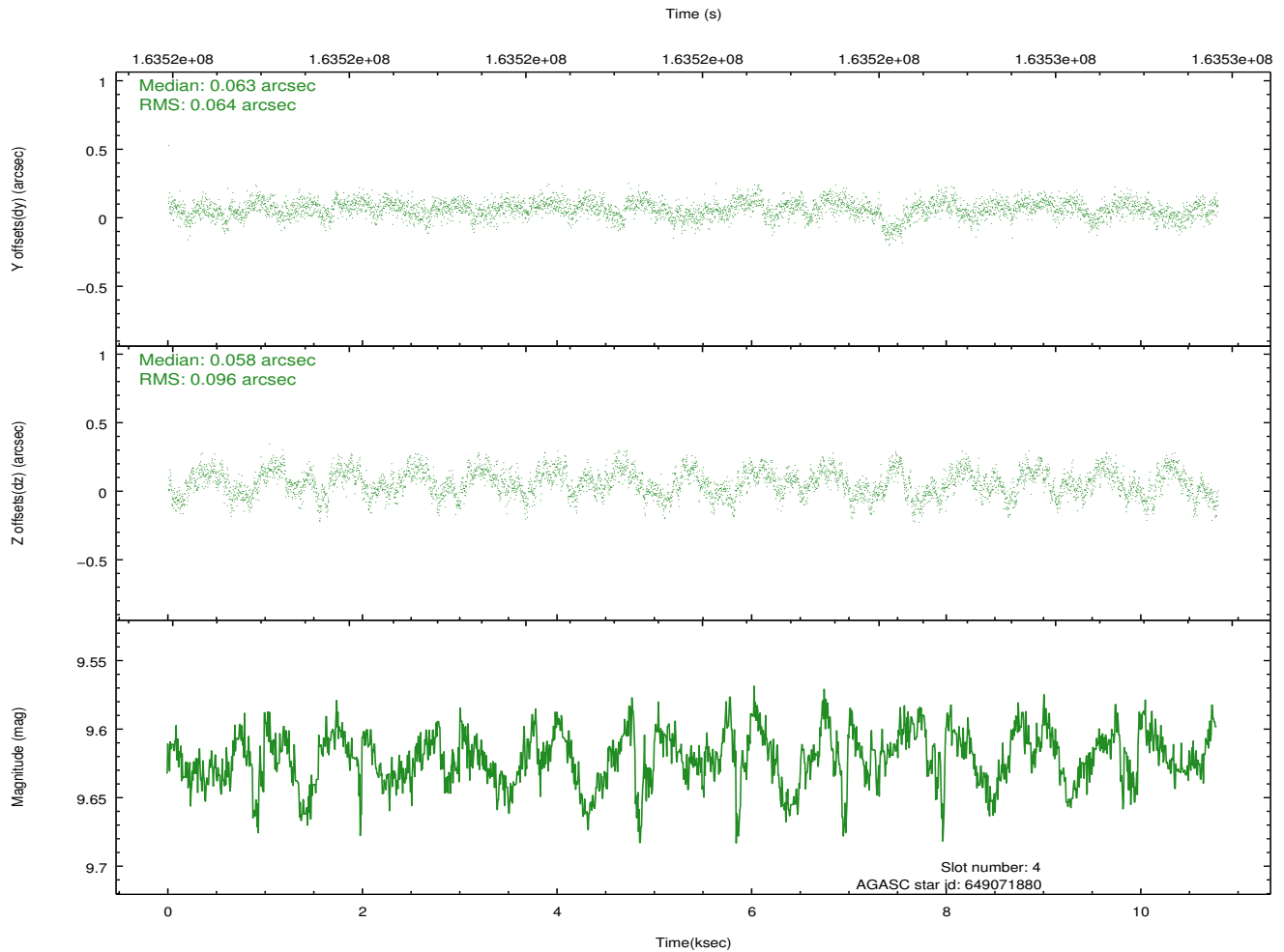
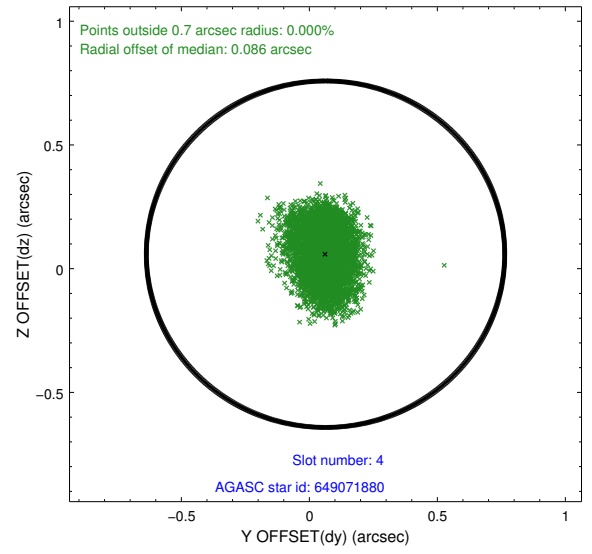
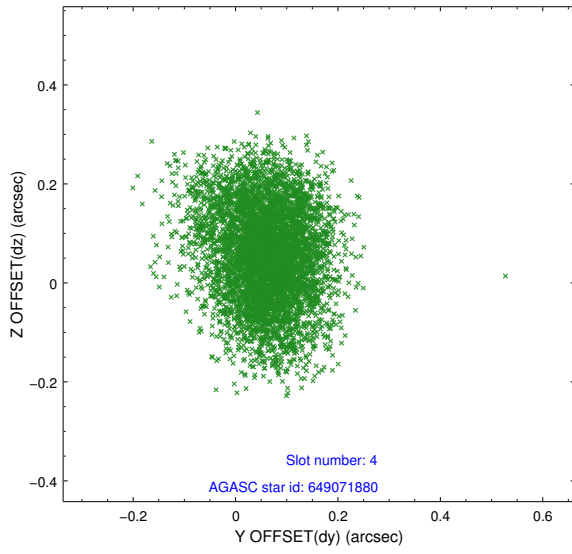


### Slot Statistics

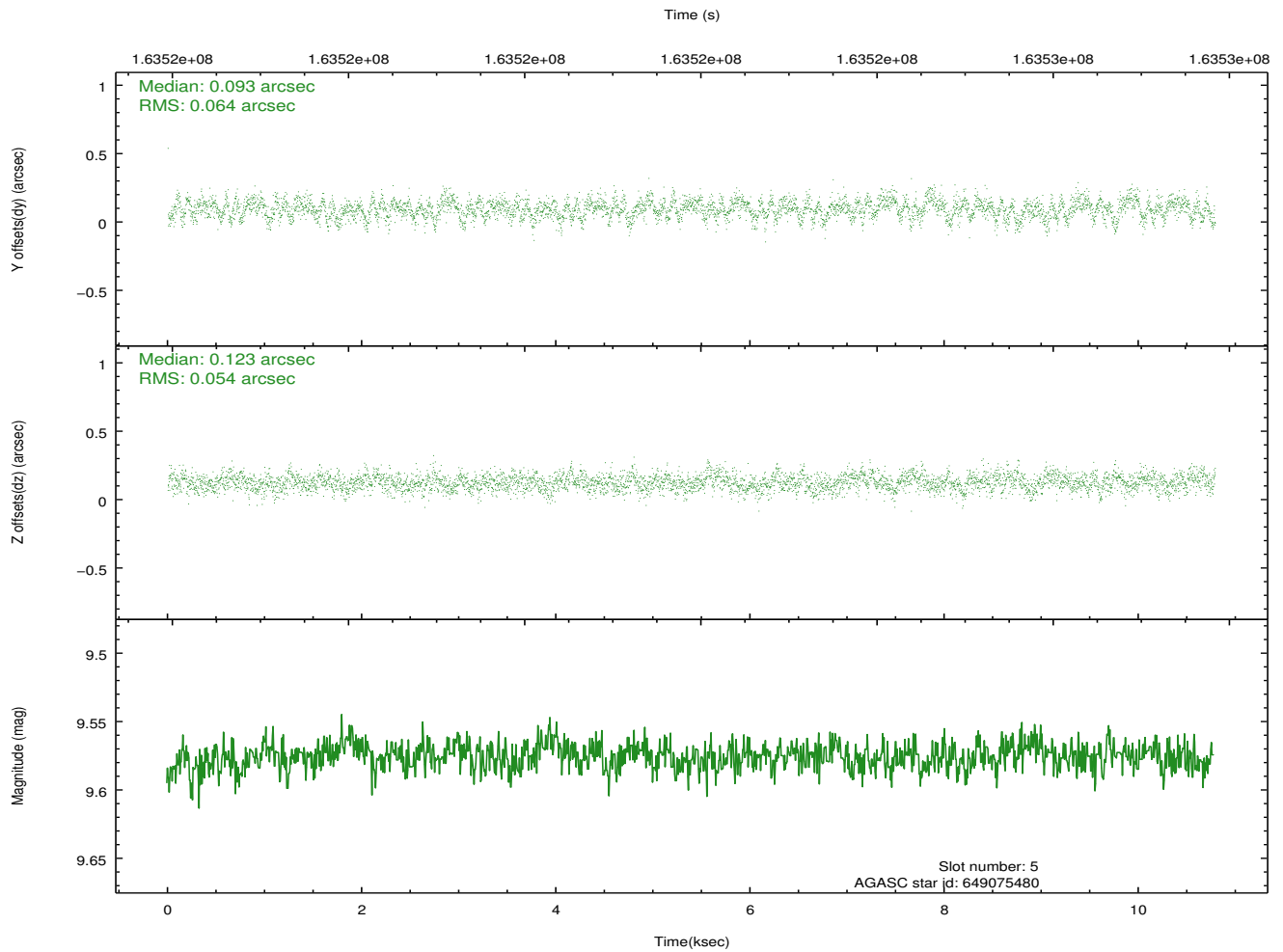
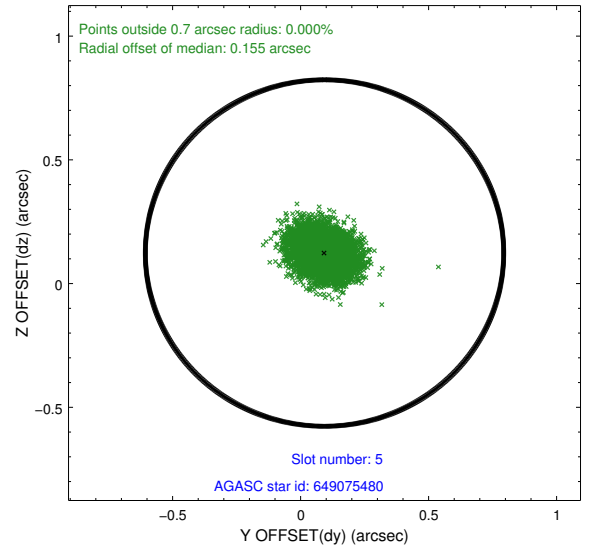
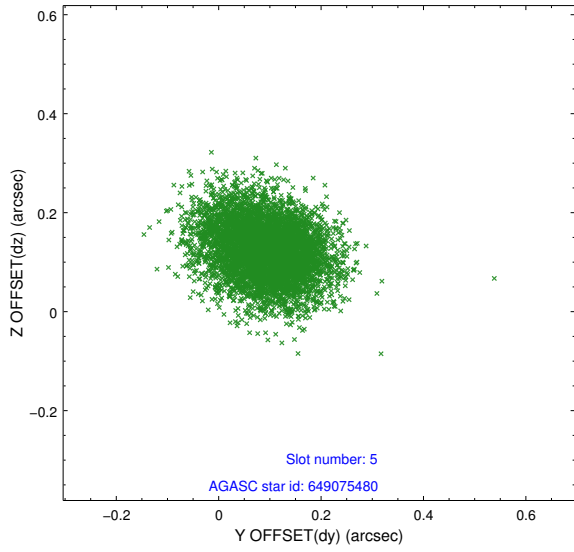
slot	status	id	mag	n_pts	med_dy	med_dz	dr1	dr2	ra	dec	mean_y	mean_z
0	FID	ACIS-S-2	7.12	2632	-0.046	-0.003	0.007	0.011	0.000000	0.000000	-755.17	-1727.70
1	FID	ACIS-S-4	7.20	2632	0.002	0.023	0.005	0.010	0.000000	0.000000	2157.90	180.36
2	FID	ACIS-S-5	7.24	2631	0.013	-0.011	0.006	0.010	0.000000	0.000000	-1807.37	174.48
3	OMITTED		0.00	0	0.000	0.000	0.000	0.000	0.000000	0.000000	0.00	0.00
4	GUIDE	649071880	9.62	5249	0.063	0.058	0.124	0.200	192.292373	-3.699376	-909.74	-1179.92
5	GUIDE	649075480	9.58	5258	0.093	0.123	0.089	0.147	192.204913	-3.977661	-1959.23	-1215.73
6	GUIDE	649069248	9.63	5261	-0.100	-0.215	0.122	0.200	191.477558	-3.033409	379.66	2377.39
7	GUIDE	649199672	9.41	5255	-0.058	0.031	0.106	0.175	192.825982	-2.900109	2440.41	-2036.32

## 2.4 Star Slots

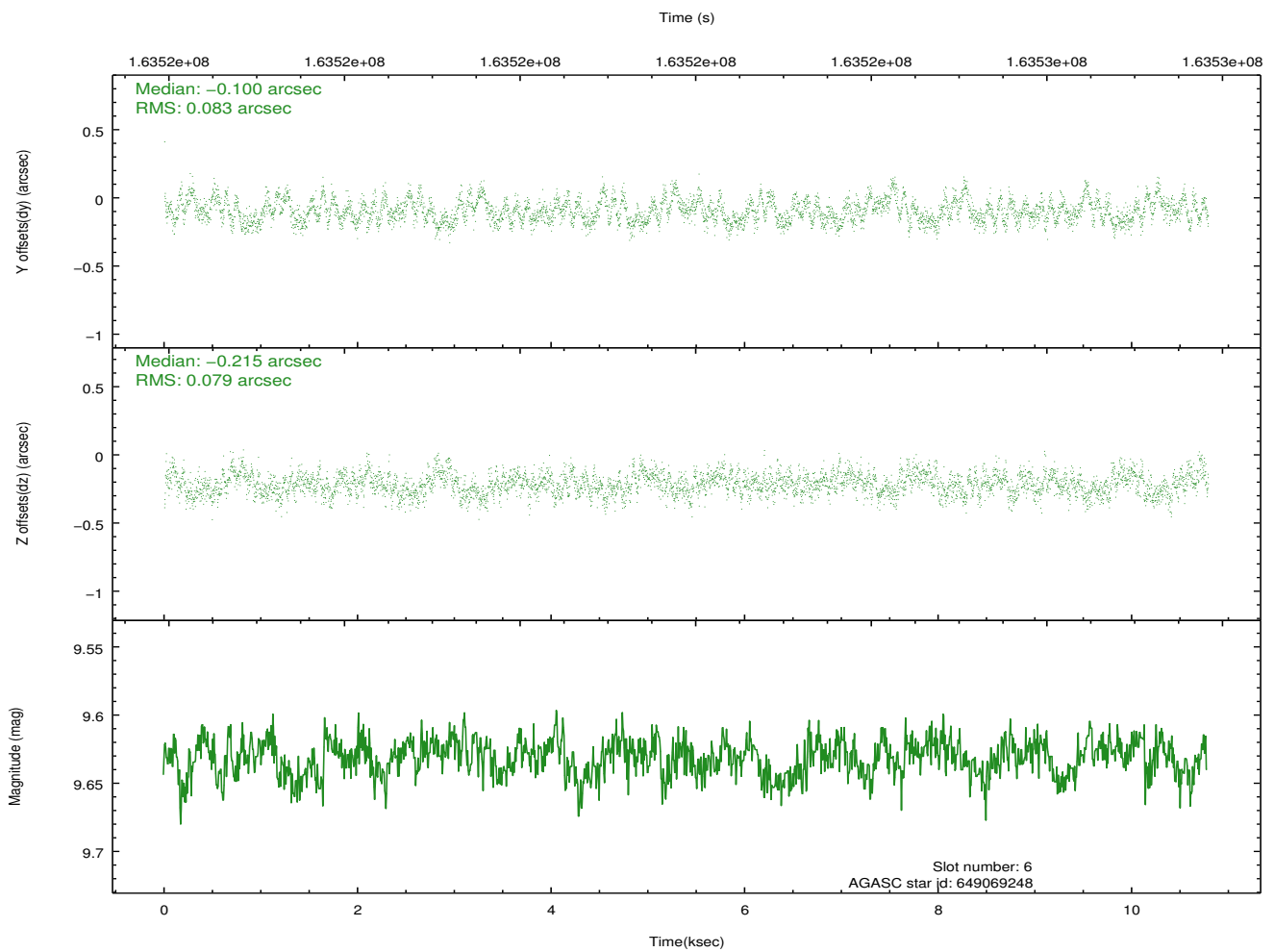
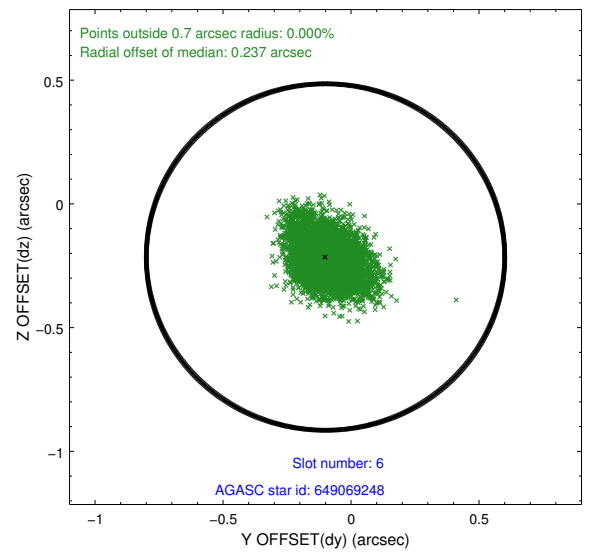
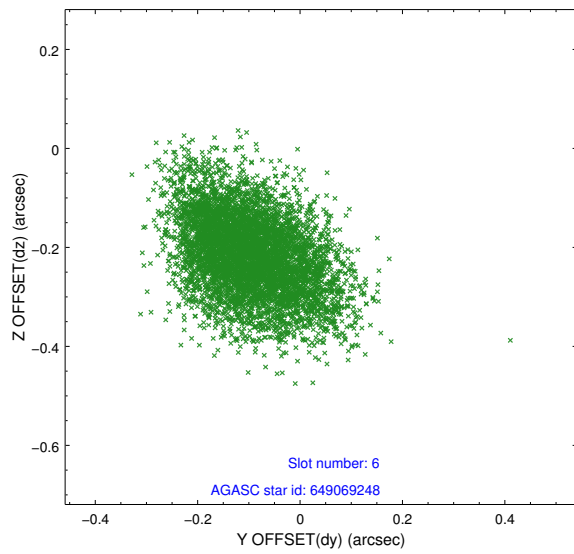
### 2.4.1 Slot 4



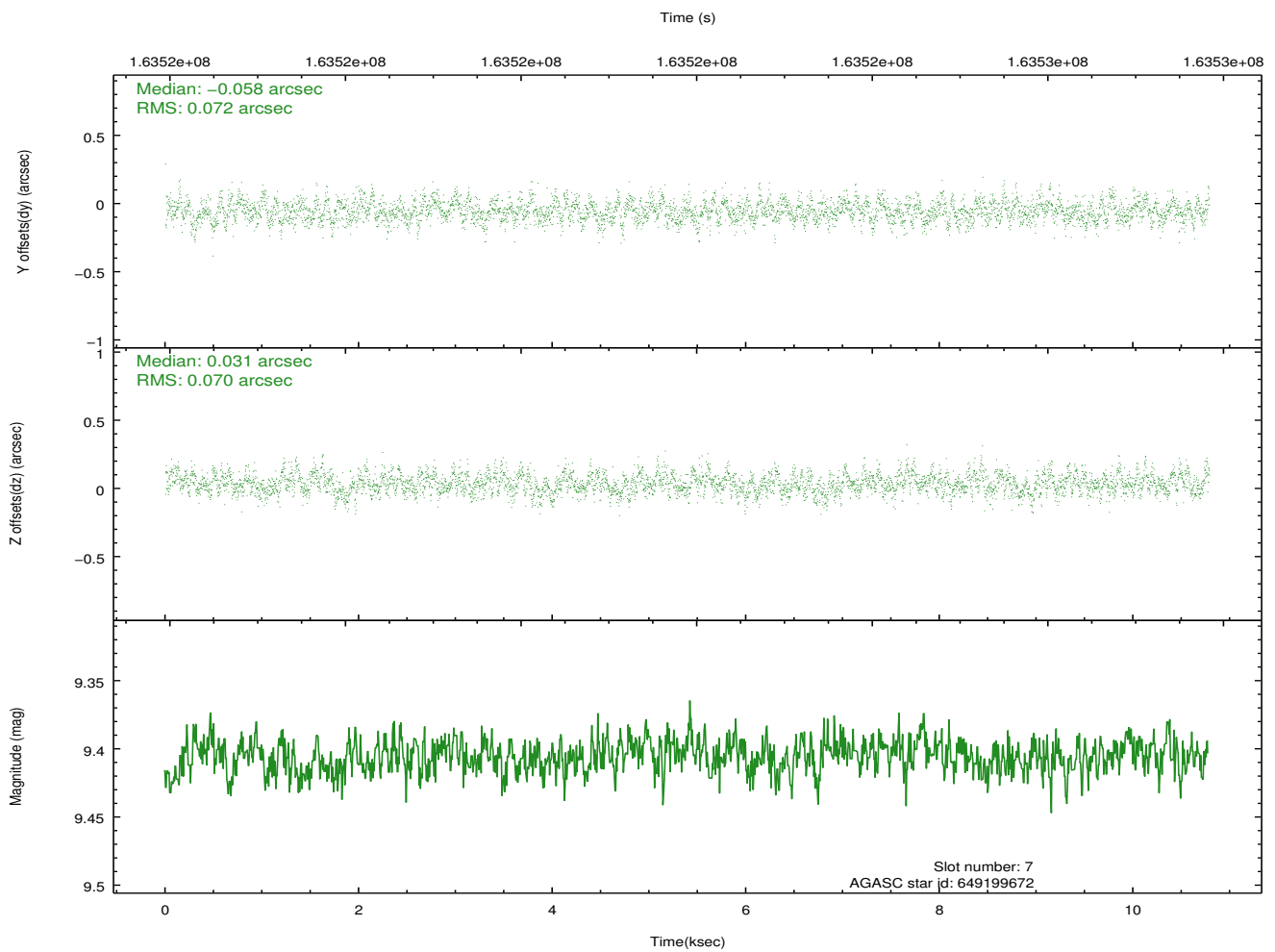
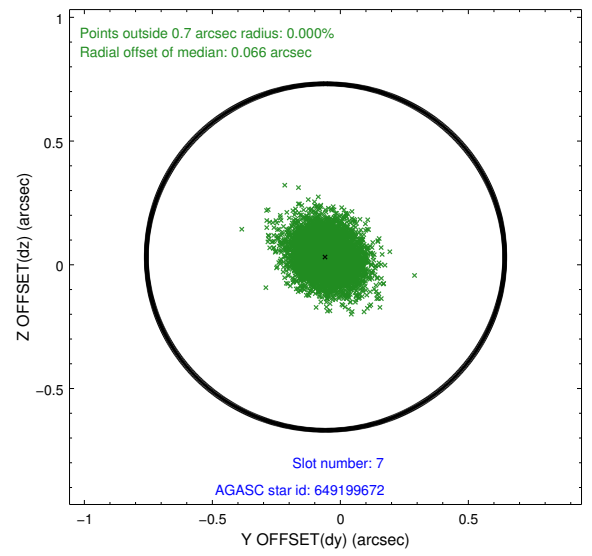
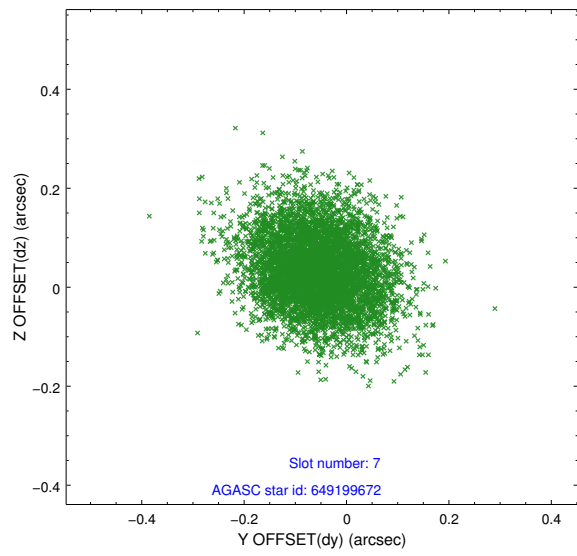
## 2.4.2 Slot 5



### 2.4.3 Slot 6

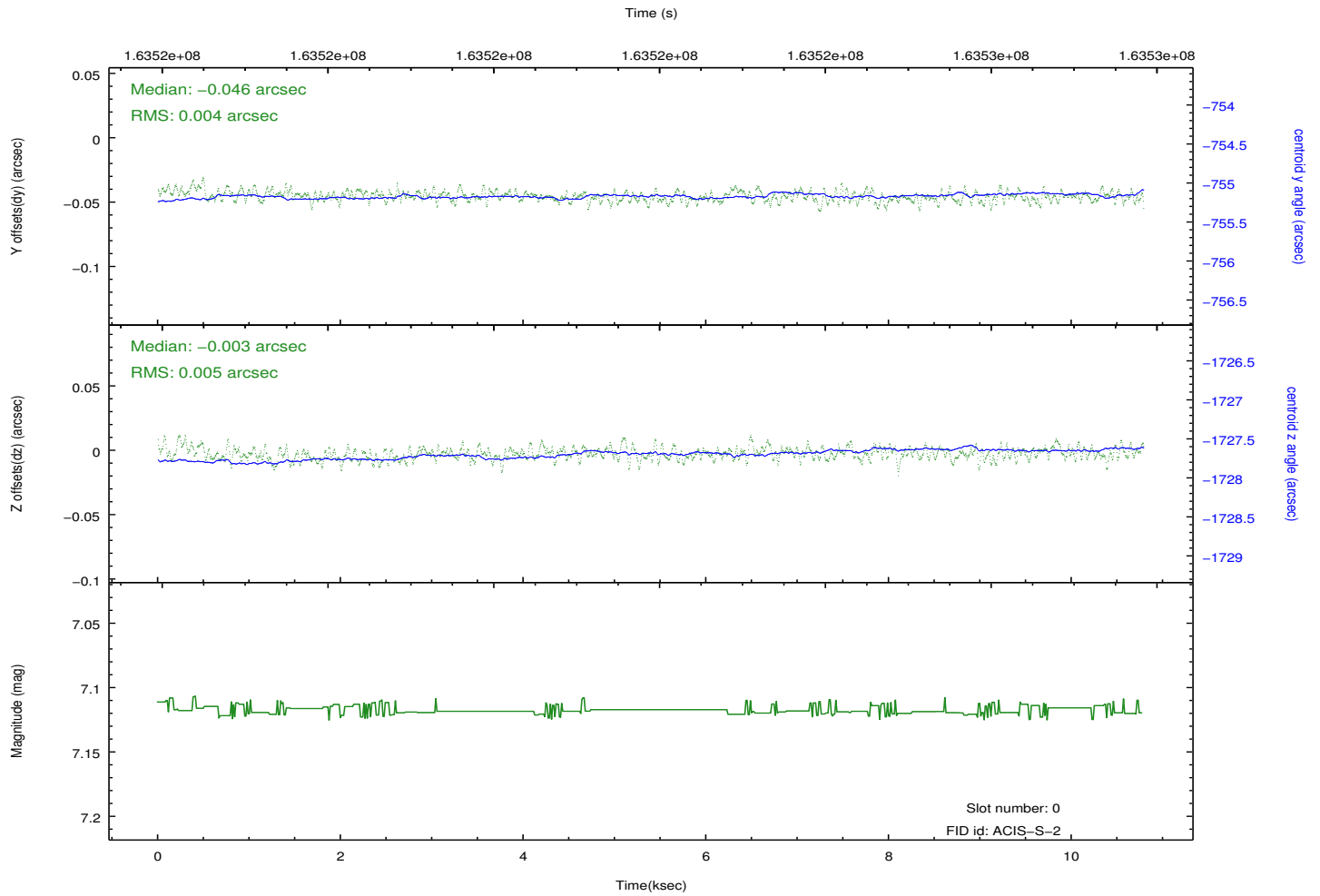
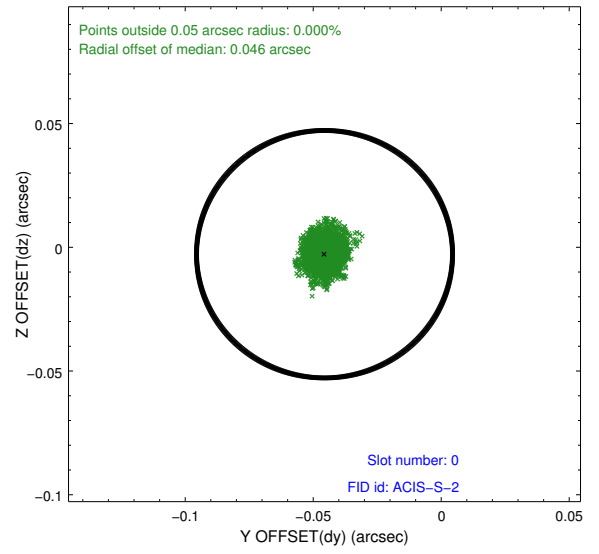
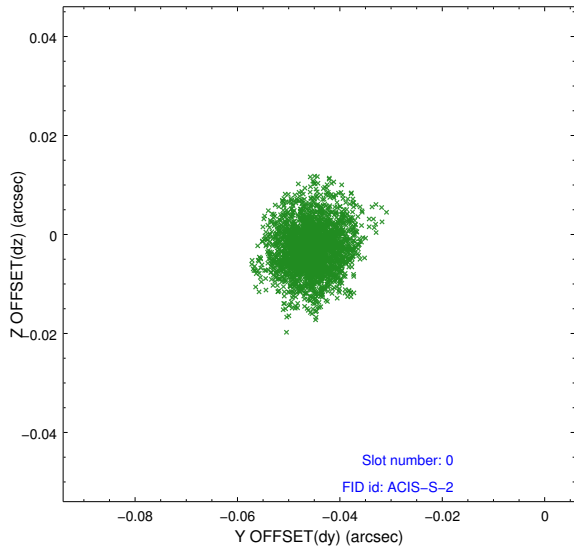


## 2.4.4 Slot 7

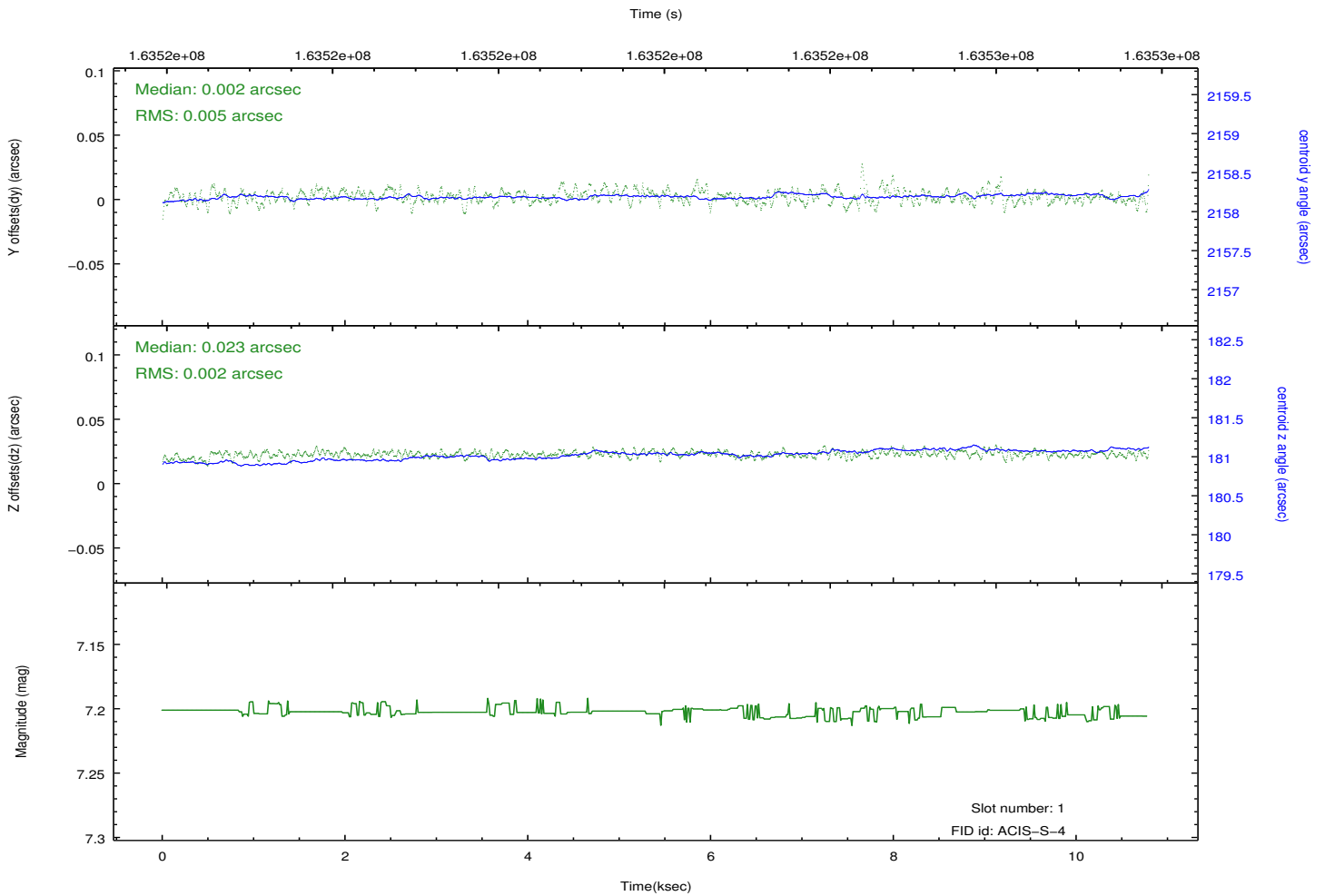
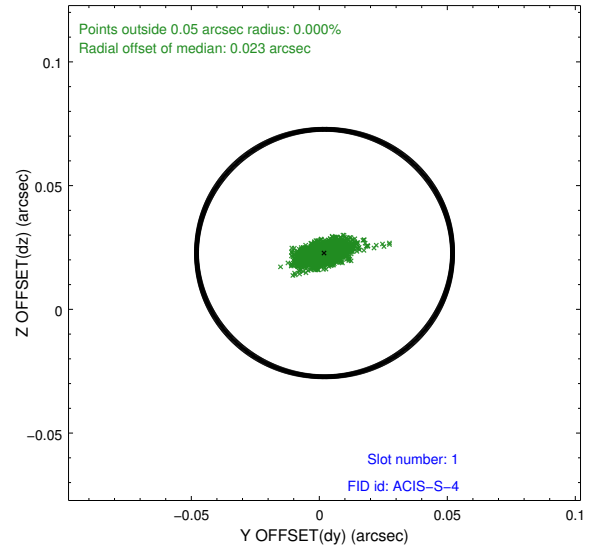
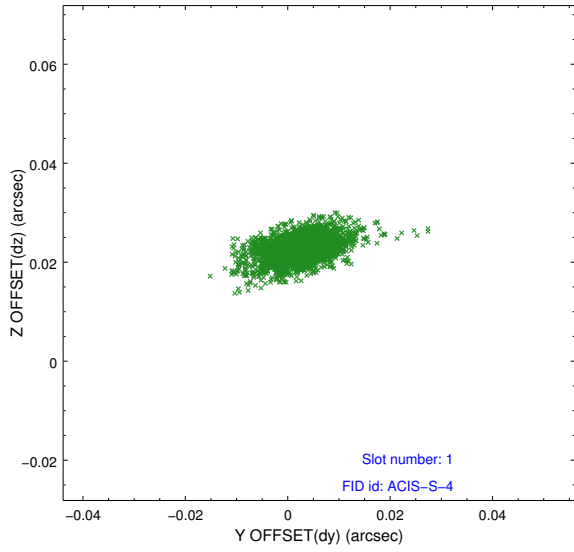


## 2.5 FID Slots

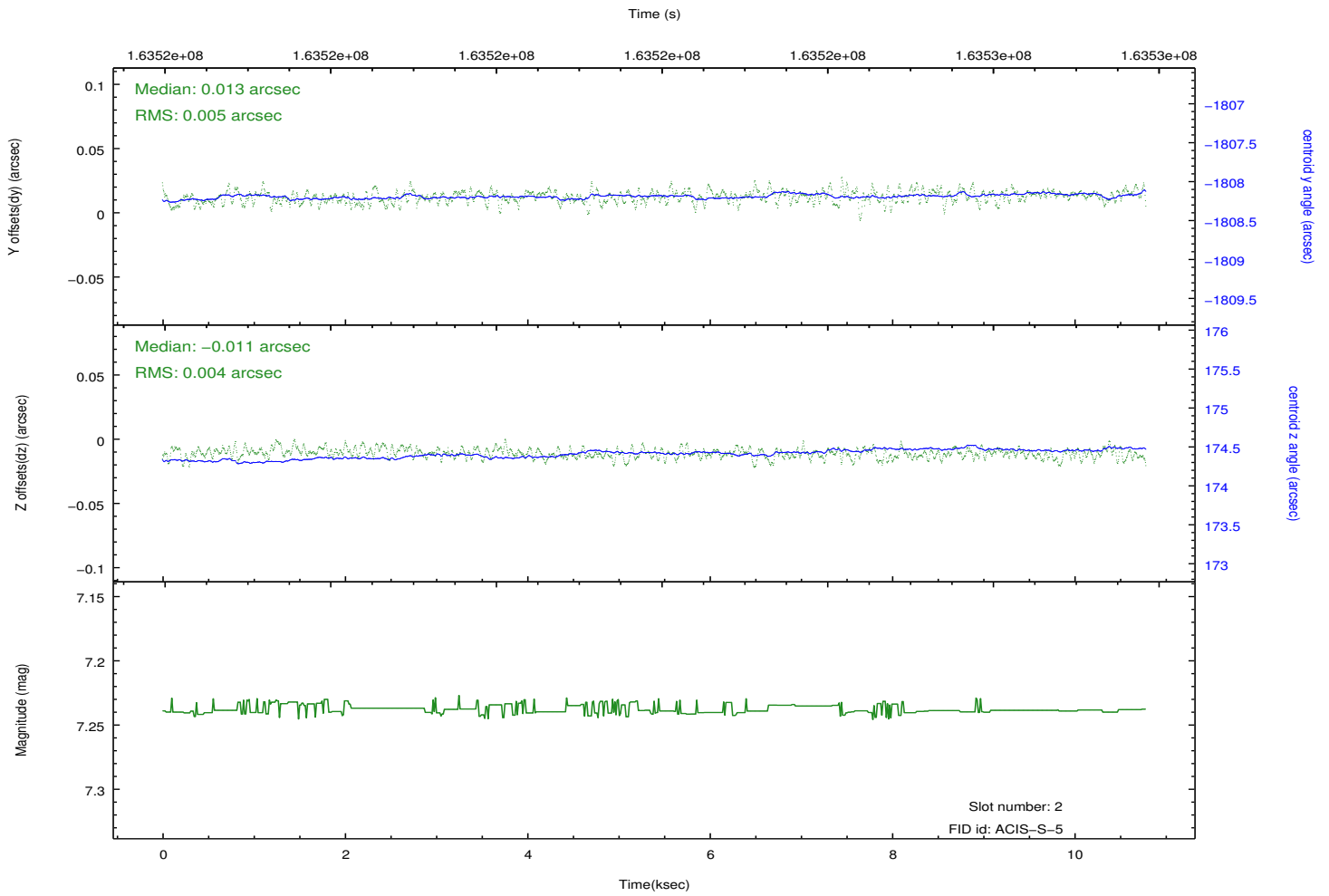
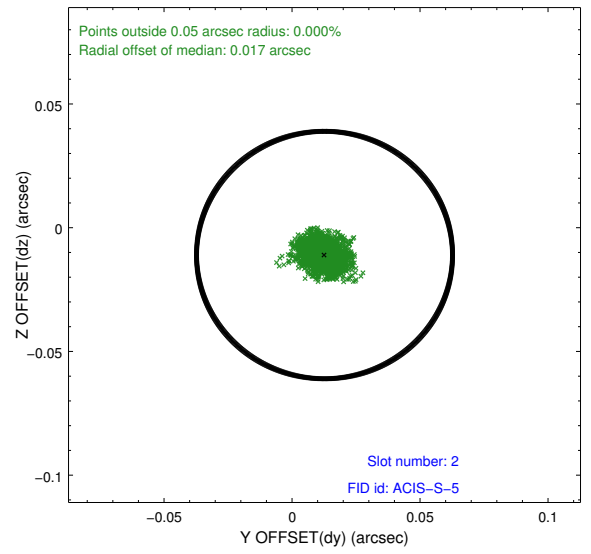
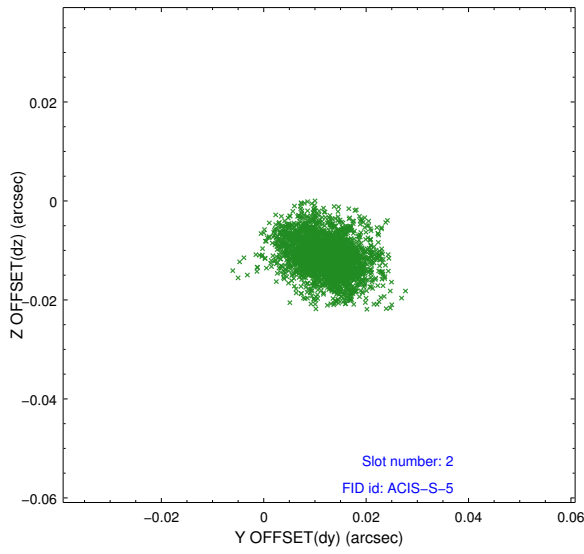
### 2.5.1 Slot 0



## 2.5.2 Slot 1



### 2.5.3 Slot 2



# A Summary

## A.1 Status

V&V Scientist	Beth Sundheim
V&V Date (YYYY-MM-DD)	2013.01.22
V&V Edition	1
V&V Disposition and Status	OK
V&V Charge Time	10.785

## A.2 Comments

The guide star in slot 3 was removed from the aspect solution due to poor data quality. The aspect solution is improved by the removal of this star from the solution.