

V&V Reference Report

L2 ASCDS Version : 8.4.5

Observation 4171 - L2 Version 3
Chandra X-Ray Center

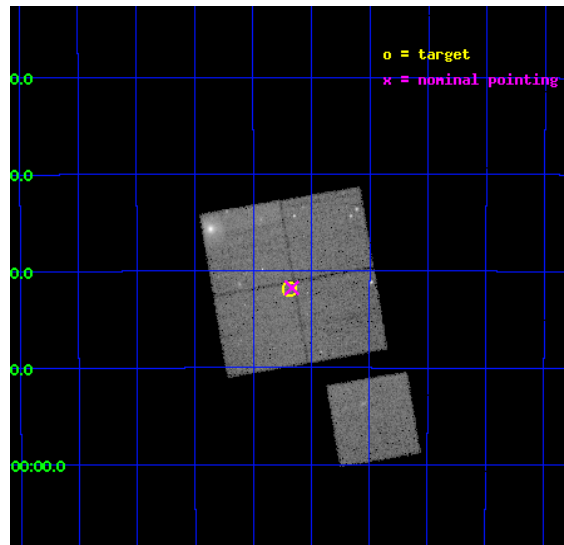
L2 Processing Date : Oct 28 2012

Contents

1	Front	2
2	OBI	3
2.1	OBI	3
2.1.1	Images	3
2.1.2	Bias	3
2.1.3	Parameters	4
2.1.4	Events	4
2.2	Compared Parameters	5
2.3	Aspect	6
2.4	Star Slots	9
2.4.1	Slot 3	9
2.4.2	Slot 4	10
2.4.3	Slot 5	11
2.4.4	Slot 6	12
2.4.5	Slot 7	13
2.5	FID Slots	14
2.5.1	Slot 0	14
2.5.2	Slot 1	15
2.5.3	Slot 2	16
A	Summary	17
A.1	Status	17
A.2	Comments	17

1 Front

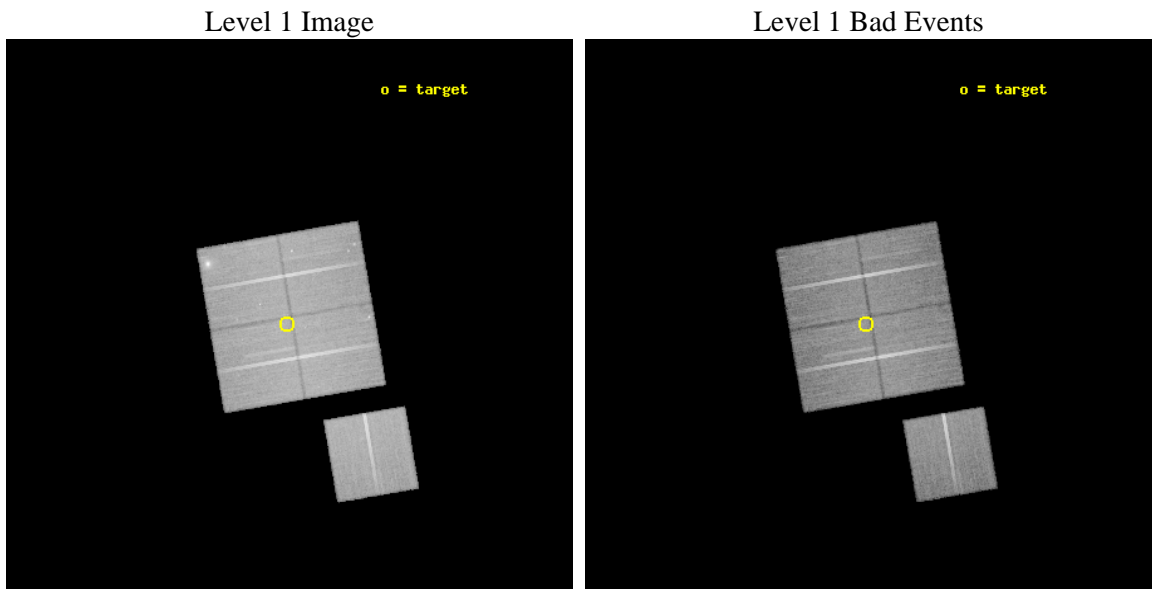
seq_num	800327	Sequence number
obs_id	4171	Observation id
title	SURVEYING THE FORNAX CLUSTER OF GALAXIES	Proposal title
observer	Dr Caleb Scharf	Principal investigator
object	FORNAX CLUSTER	Source name
dtcycle	0	
cycle	P	events from which exps? Prim/Second/Both
ra_targ	54.54666	Observer's specified target RA [deg]
dec_targ	-35.69839	Observer's specified target Dec [deg]
ra_nom	54.541872549973	Nominal RA [deg]
dec_nom	-35.695873821275	Nominal Dec [deg]
roll_nom	170.20587672964	Nominal Roll [deg]
revision	3	Processing version of data
ontime	45545.036041558	Sum of GTIs [s]
livetime	44949.956615907	Livetime [s]
ontime0	45545.03607142	Sum of GTIs [s]
ontime1	45548.17704162	Sum of GTIs [s]
ontime2	45554.458902299	Sum of GTIs [s]
ontime3	45545.036041558	Sum of GTIs [s]
ontime6	45557.599912375	Sum of GTIs [s]
l2events	142176	Number of level 2 events



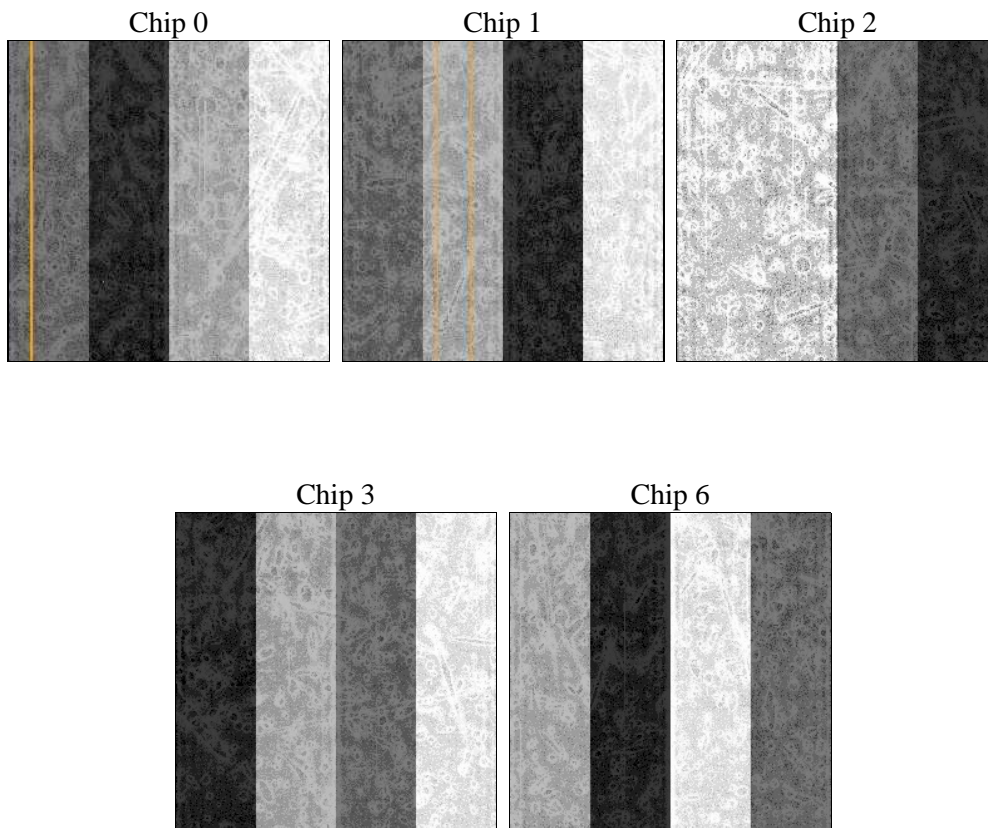
2 OBI

2.1 OBI

2.1.1 Images



2.1.2 Bias



2.1.3 Parameters

obi_num	0	Obi number	sched_exp_time	45420.000000	[s] Scheduled observation exposure time
ascdsver	8.4.5	Processing system revision	ontime	45545.036041558	Sum of GTIs [s]
caldbver	4.5.2	 	ontime0	45545.03607142	Sum of GTIs [s]
date	2012-10-28T13:55:49	Date and time of file creation	ontime1	45548.17704162	Sum of GTIs [s]
revision	3	Processing version of data	ontime2	45554.458902299	Sum of GTIs [s]
			ontime3	45545.036041558	Sum of GTIs [s]
			ontime6	45557.599912375	Sum of GTIs [s]
			l1events	1260159	Number of level 1 events

2.1.4 Events

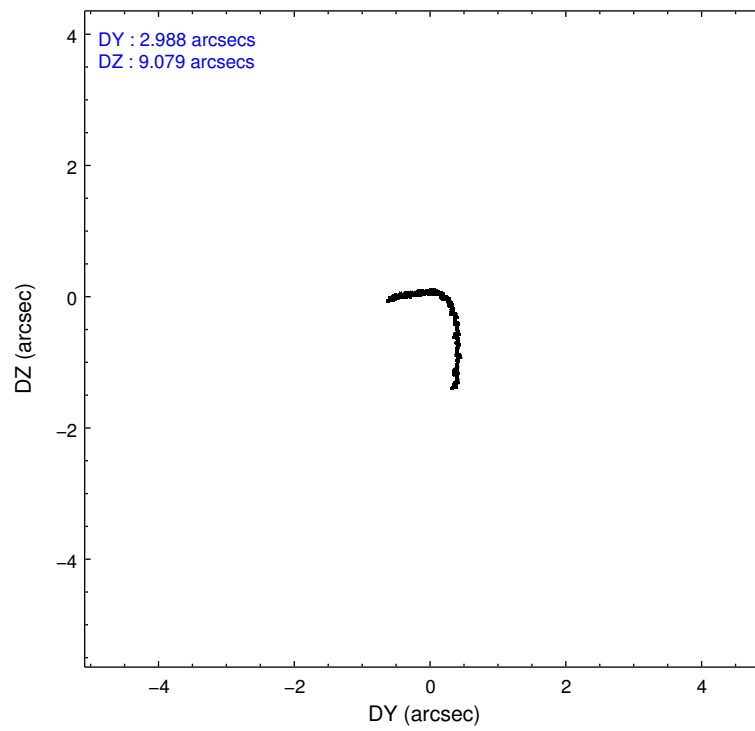
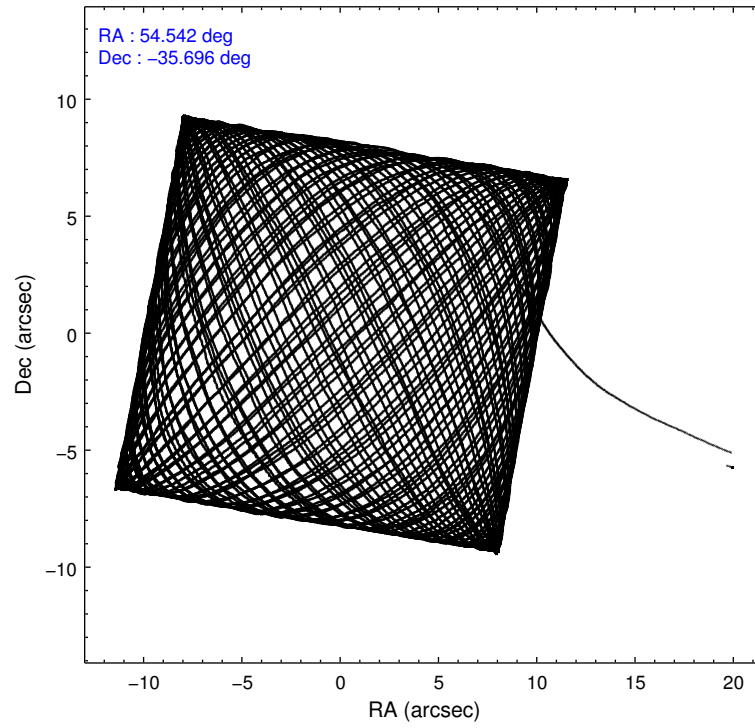
	ccd 0	ccd 1	ccd 2	ccd 3	ccd 6
level 1 events	237974	253655	266616	253648	248266
rejected events	205235	205262	237709	225366	221157
rejected %	86%	80%	89%	88%	89%

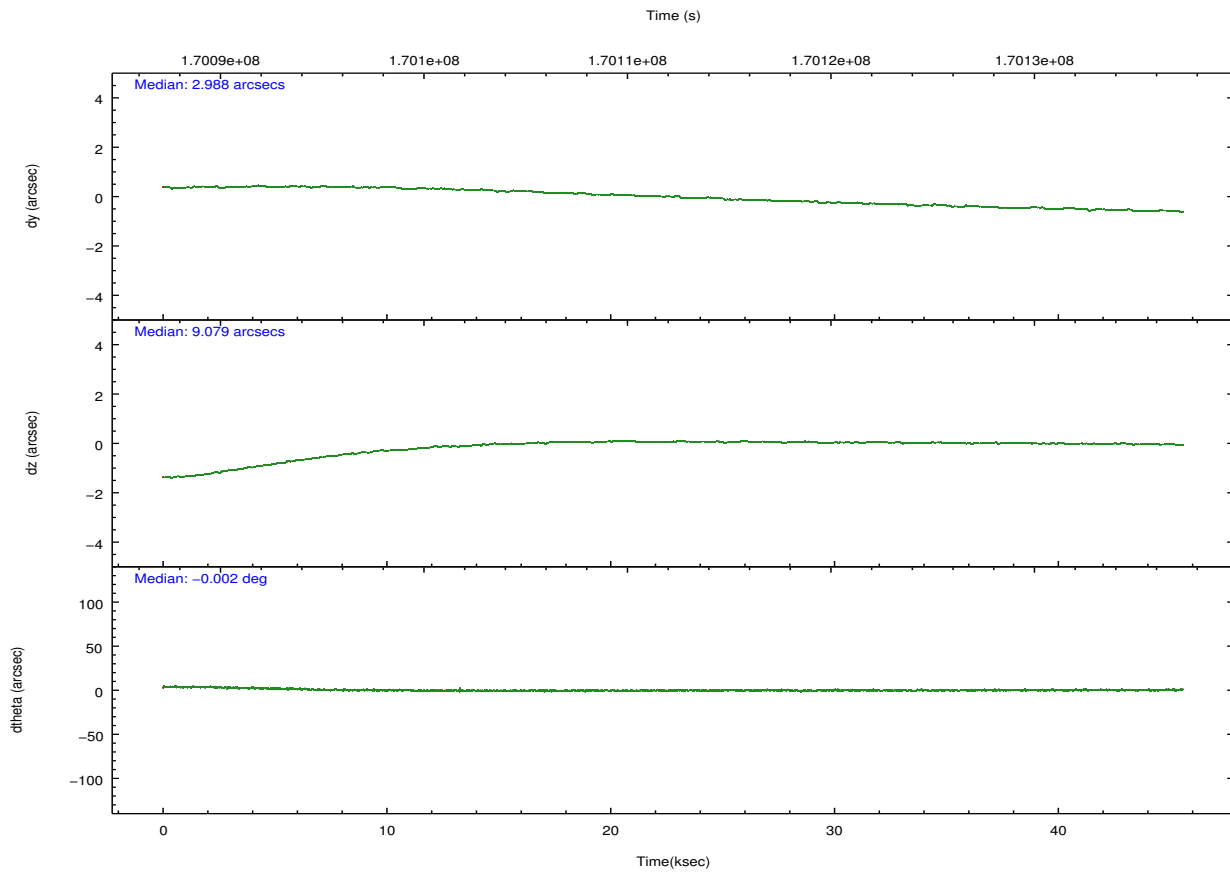
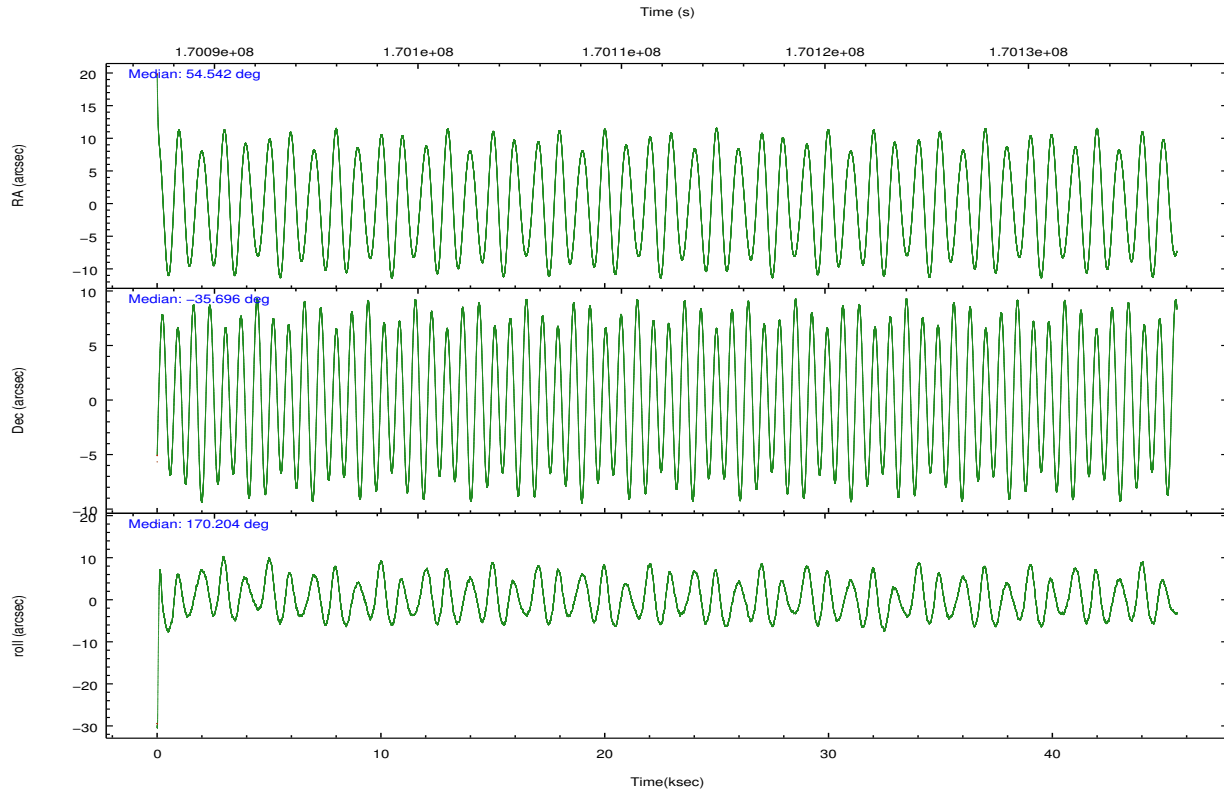
	ccd 0	ccd 1	ccd 2	ccd 3	ccd 6
grade 0 events	15864	28272	12859	12779	10852
	6%	11%	4%	5%	4%
grade 1 events	142	178	156	133	103
	0%	0%	0%	0%	0%
grade 2 events	6172	7460	5964	5385	5404
	2%	2%	2%	2%	2%
grade 3 events	3099	3616	2917	2860	2887
	1%	1%	1%	1%	1%
grade 4 events	2886	3597	2831	2849	2815
	1%	1%	1%	1%	1%
grade 5 events	8341	9225	8311	9336	9249
	3%	3%	3%	3%	3%
grade 6 events	4805	5572	4410	4499	5220
	2%	2%	1%	1%	2%
grade 7 events	196665	195735	229168	215807	211736
	82%	77%	85%	85%	85%

2.2 Compared Parameters

Parameter	Planned	Actual	Parameter	Planned	Actual
Instrument	ACIS	ACIS	Obspar format version number	7	7
Detector	ACIS-01236	ACIS-01236	Obspar file type	PREDICTED	ACTUAL
Grating	NONE	NONE	Obspar update status	NONE	UPDATED
Data mode	VFAINT	VFAINT	Number of optional ACIS chips dropped	0	0
Observation mode	POINTING	POINTING	On-chip summing requested	N	N
[deg] Pointing RA	54.573452	54.54187254997338	Subarray requested	NONE	NONE
[deg] Pointing Dec	-35.686317	-35.69587382127519	Alternating exposures requested	N	N
[deg] Pointing Roll	170.015627	170.2058767296417	[s] Primary exposure time	0.000000	3.1
[mm] SIM focus pos	-0.782348	-0.7809083437167272			
[mm] SIM defocus	0	0.001439871863259334			
[mm] SIM translation stage pos	-233.592463	-233.5874344608287			
[mm] SIM translation stage offset	0	-0.005018542100998502			
[s] Observation start time (MET)	170089603.184000	170088572.94855			
Observation start date	2003-05-23T15:05:39	2003-05-23T14:49:32			
[s] Observation end time (MET)	170135023.184000	170135157.15053			
Observation end date	2003-05-24T03:42:39	2003-05-24T03:45:57			
Read mode	TIMED	TIMED			

2.3 Aspect



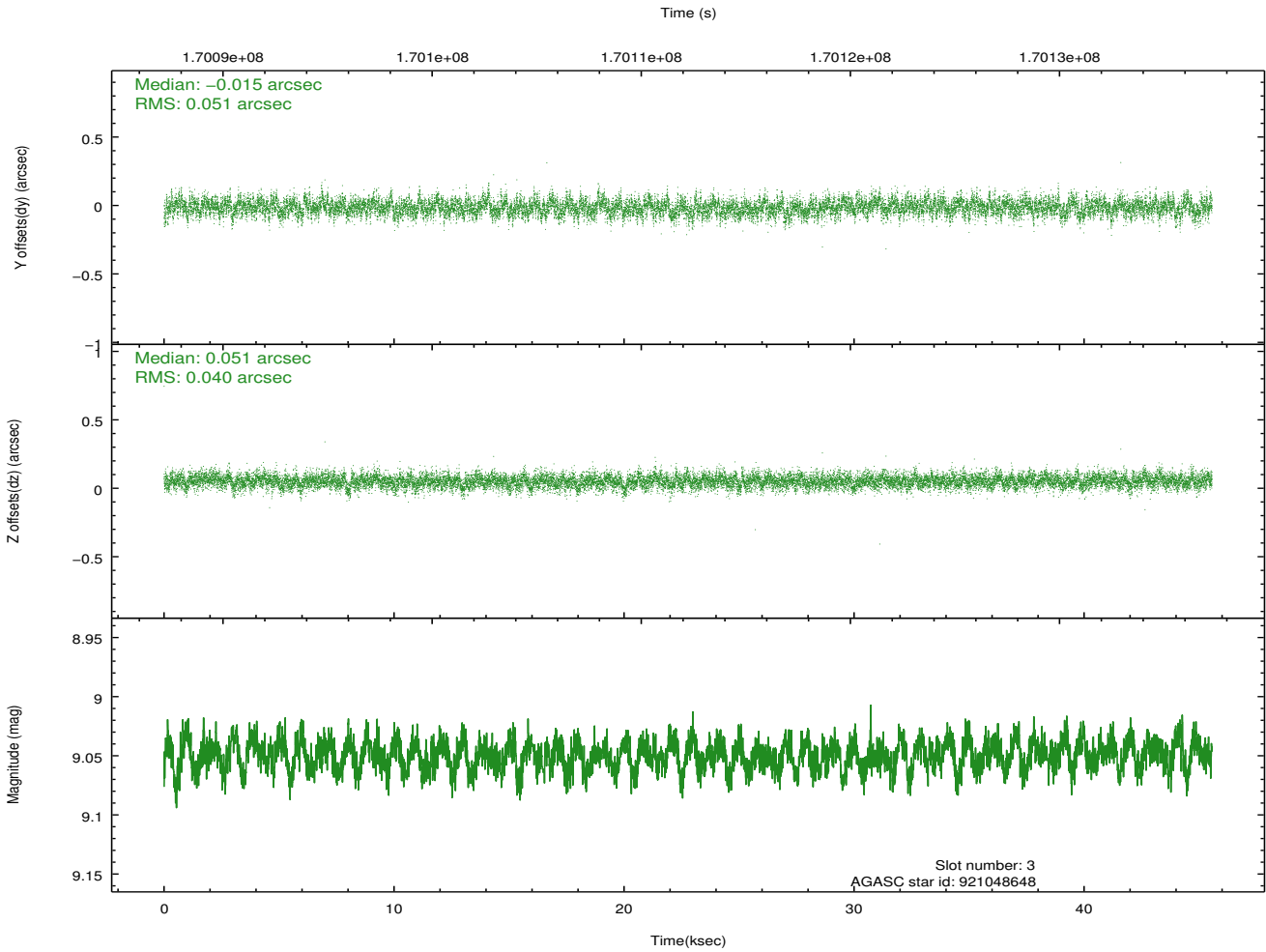
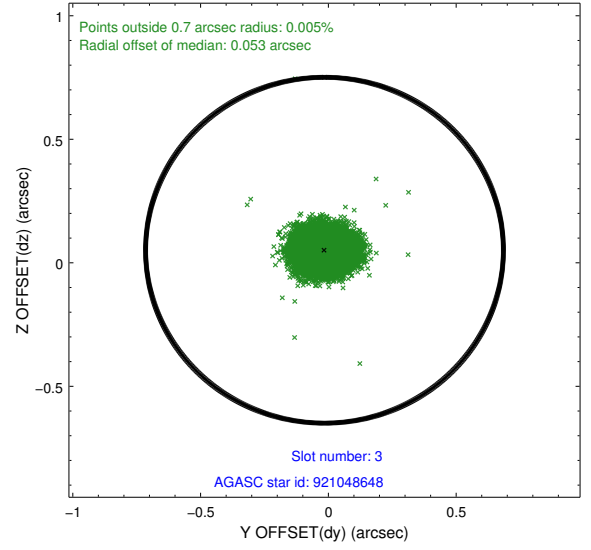
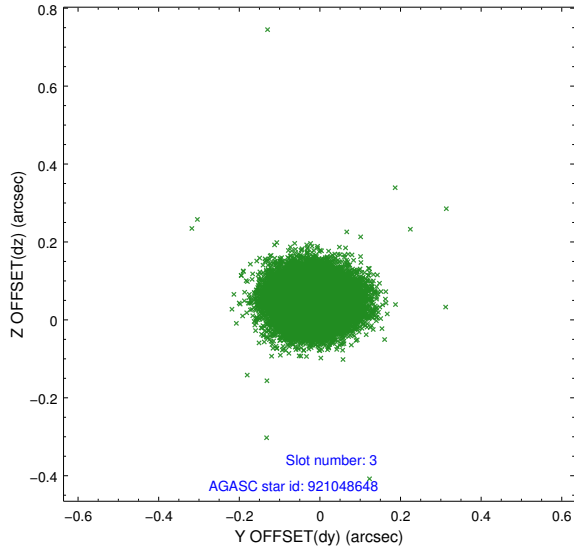


Slot Statistics

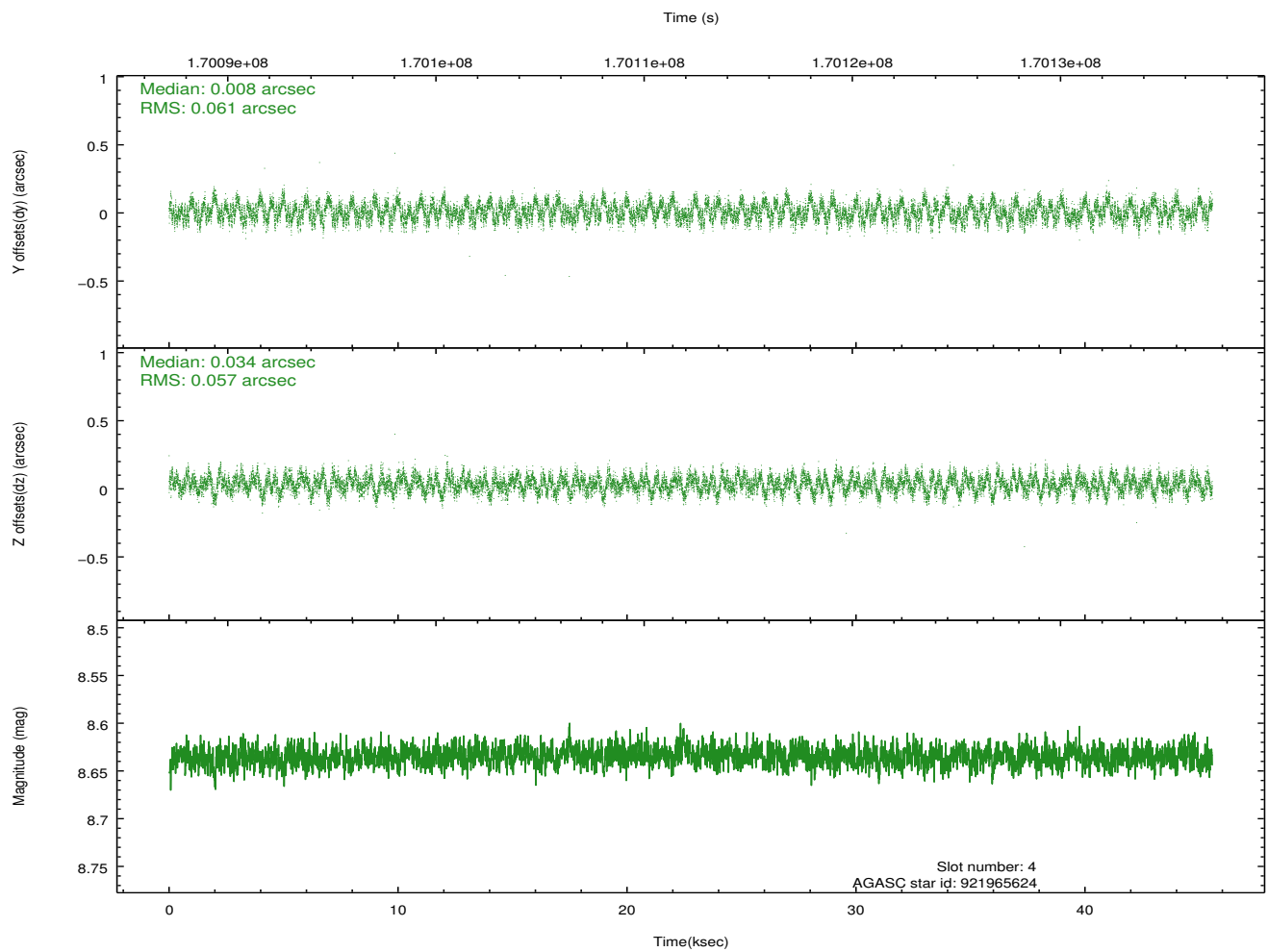
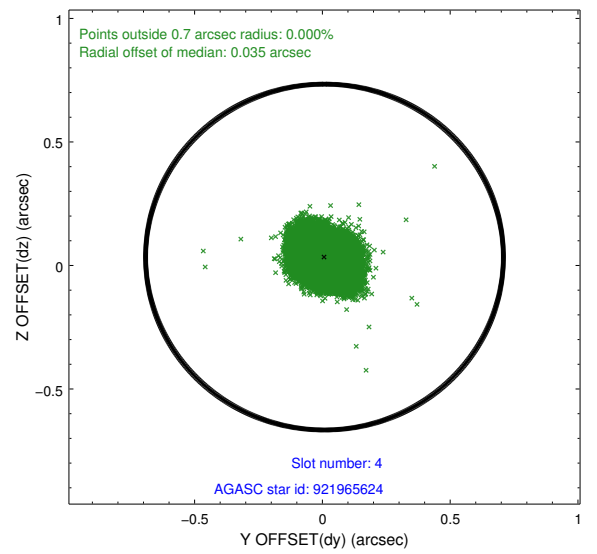
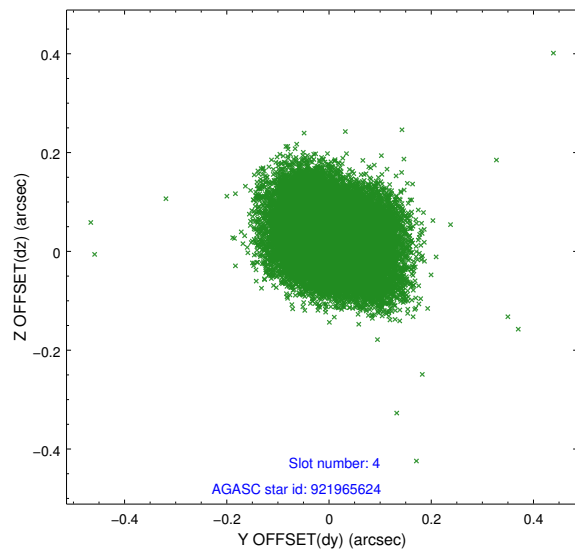
slot	status	id	mag	n_pts	med_dy	med_dz	dr1	dr2	ra	dec	mean_y	mean_z
0	FID	ACIS-I-1	7.24	11113	-0.021	0.054	0.013	0.043	0.000000	0.000000	936.82	-832.29
1	FID	ACIS-I-5	7.24	11111	-0.086	0.027	0.016	0.036	0.000000	0.000000	-1811.37	1065.17
2	FID	ACIS-I-6	7.25	11113	0.013	-0.014	0.012	0.018	0.000000	0.000000	402.39	1709.63
3	GUIDE	921048648	9.05	22217	-0.015	0.051	0.068	0.112	53.884610	-35.870023	1863.14	1006.86
4	GUIDE	921965624	8.63	22221	0.008	0.034	0.091	0.140	54.900706	-35.940077	-1097.98	736.17
5	GUIDE	921966544	7.92	22224	0.031	0.162	0.058	0.092	54.743508	-35.636012	-458.58	-263.66
6	GUIDE	921967072	7.67	22227	-0.065	-0.138	0.072	0.116	54.269247	-36.292226	490.78	2302.73
7	GUIDE	921970112	9.56	22206	0.045	-0.103	0.128	0.208	54.291262	-35.695592	806.61	177.35

2.4 Star Slots

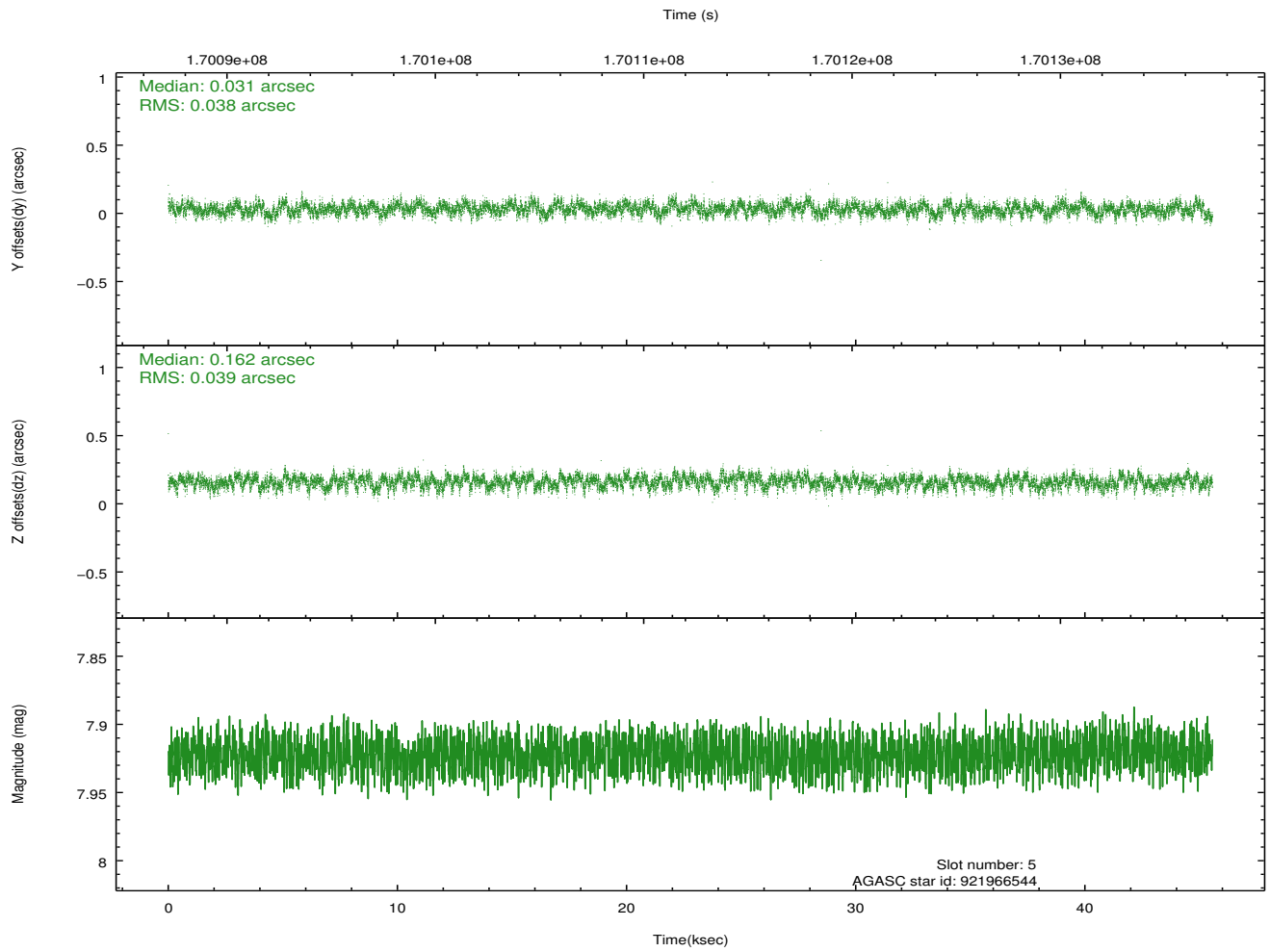
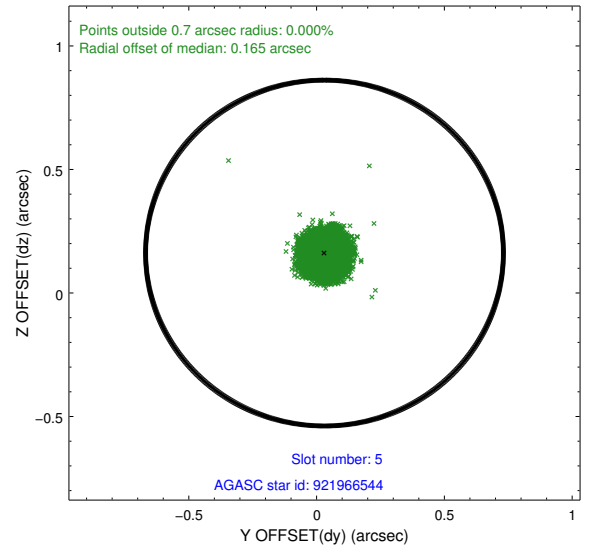
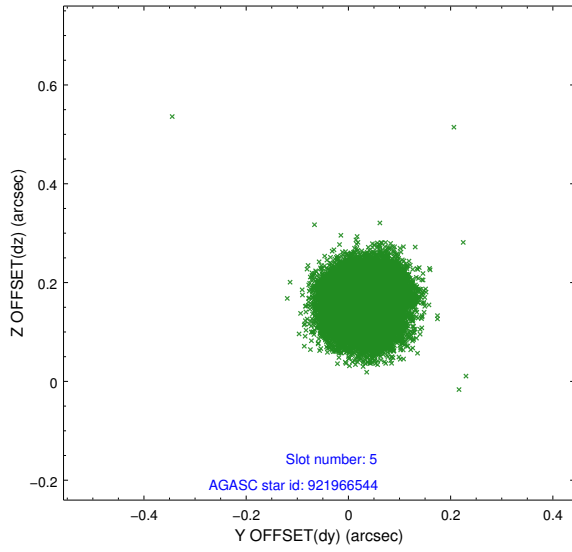
2.4.1 Slot 3



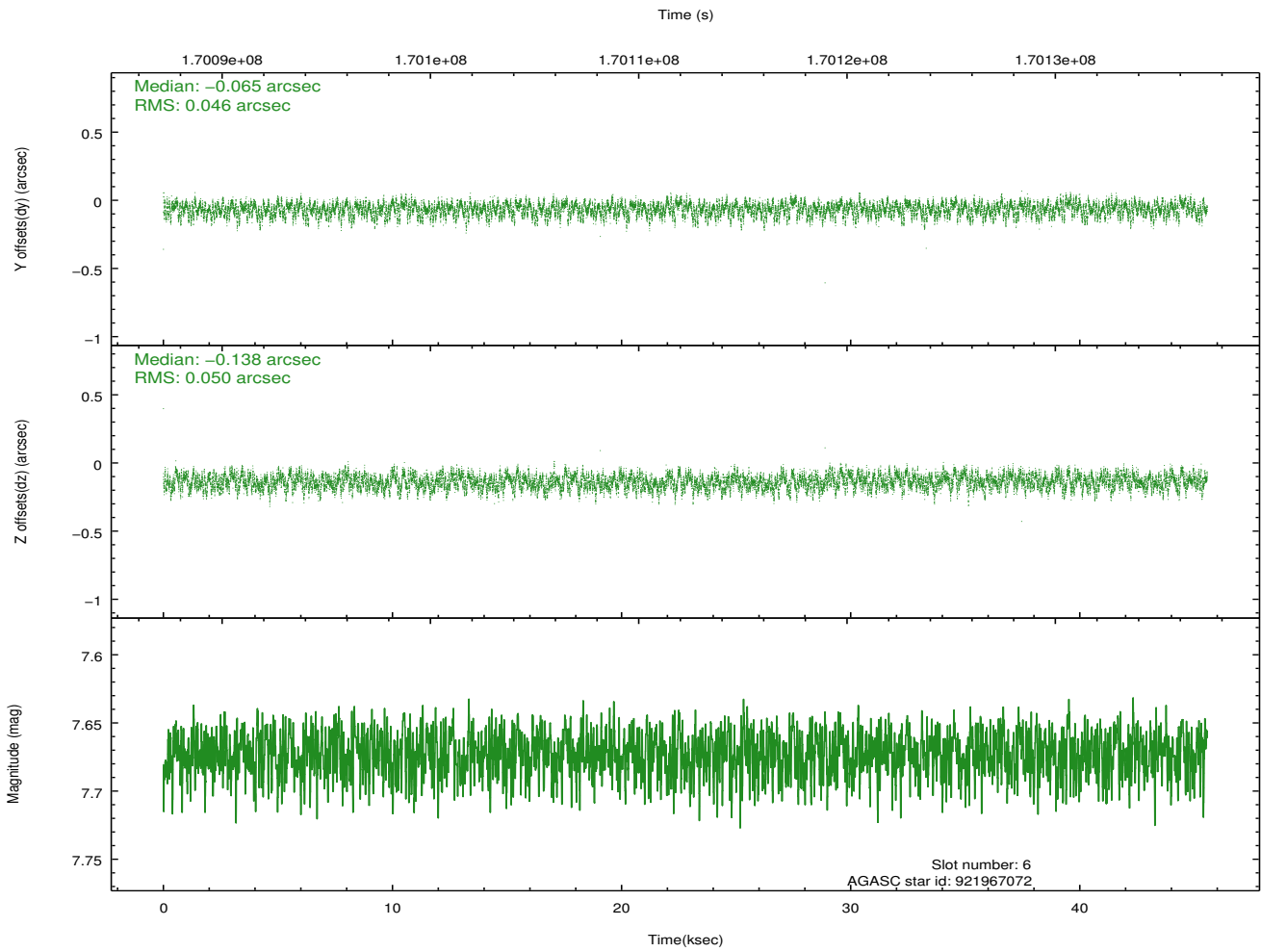
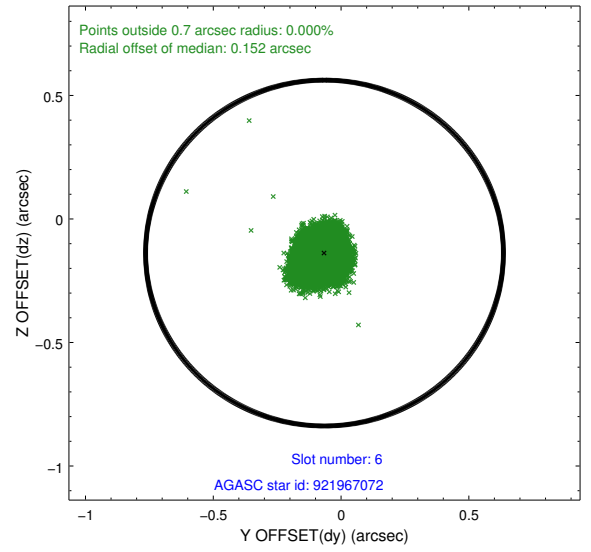
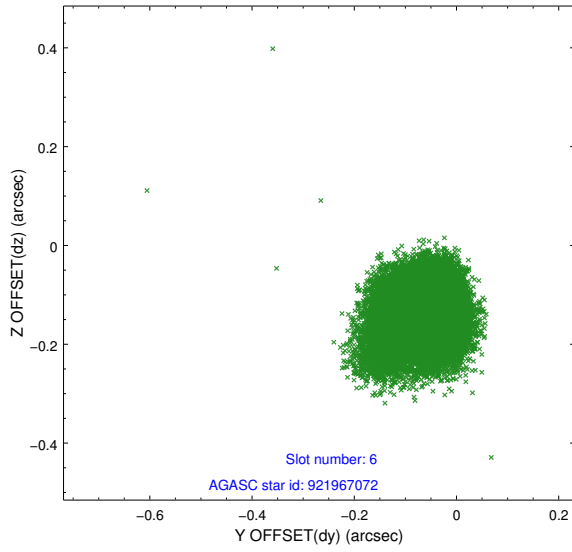
2.4.2 Slot 4



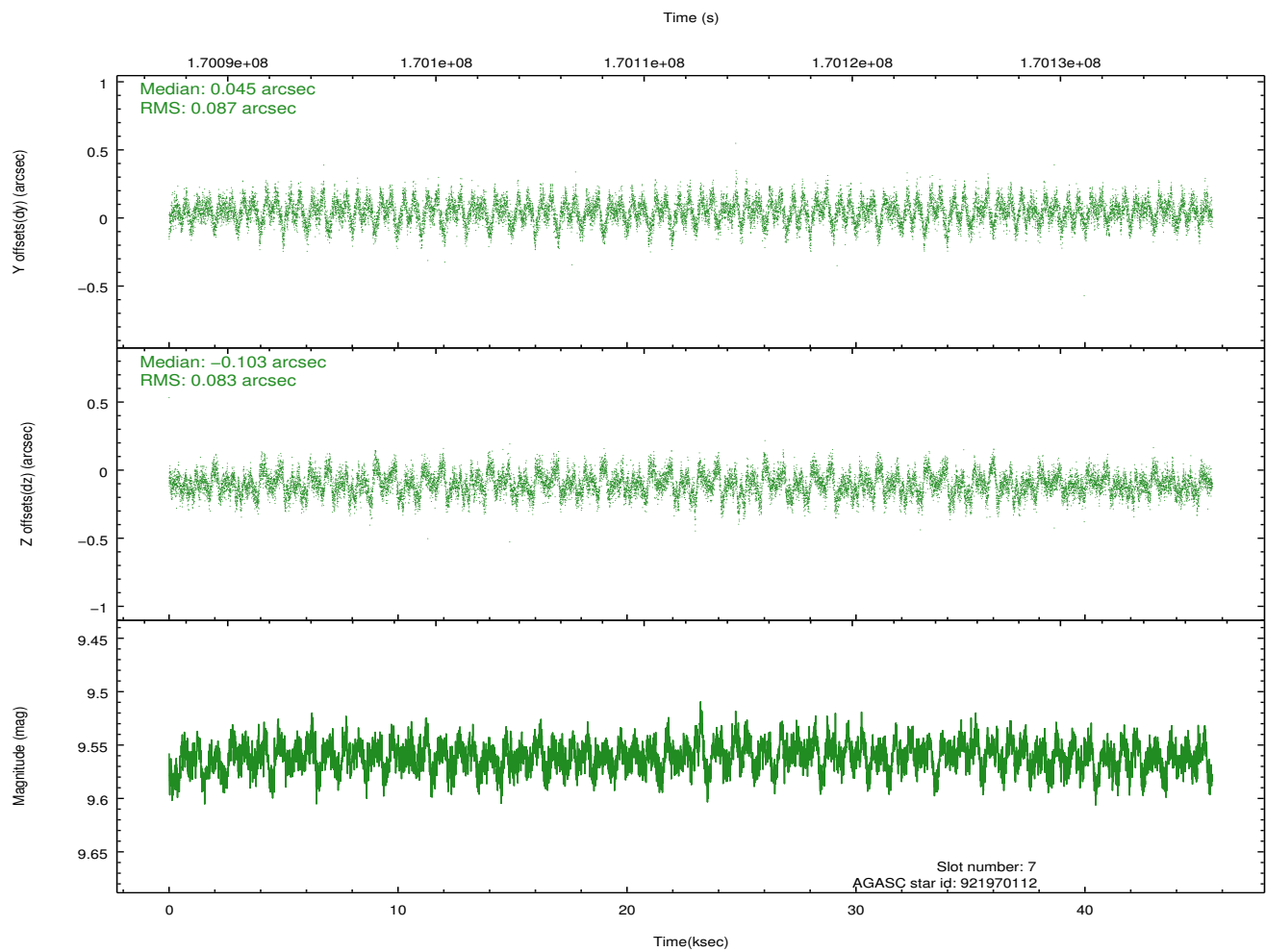
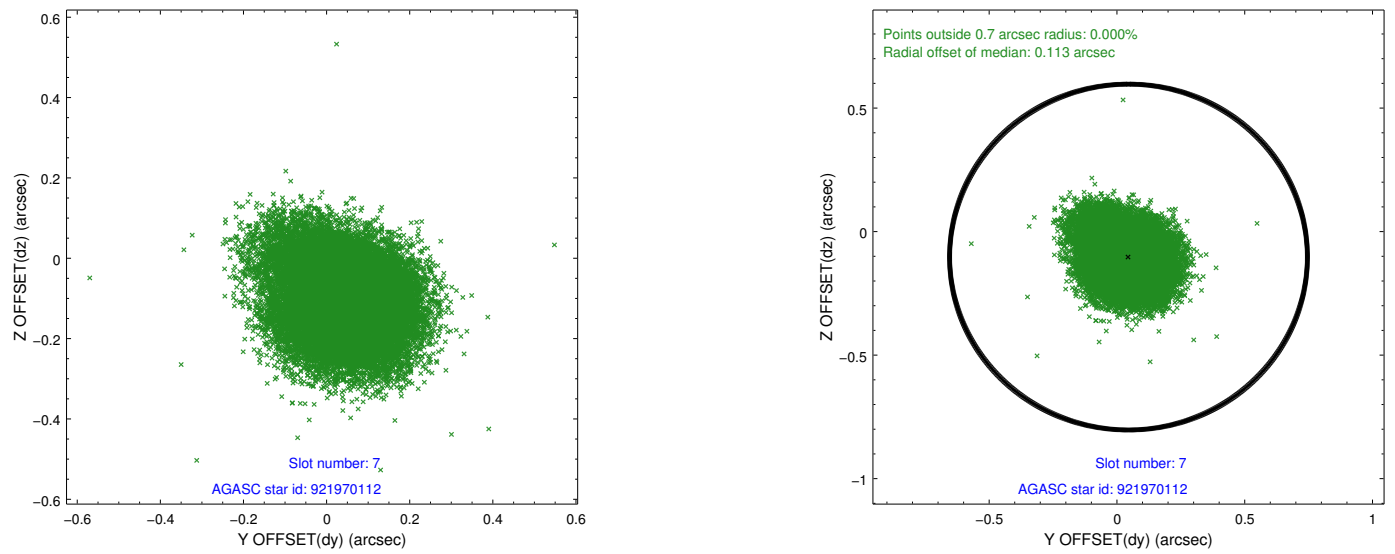
2.4.3 Slot 5



2.4.4 Slot 6

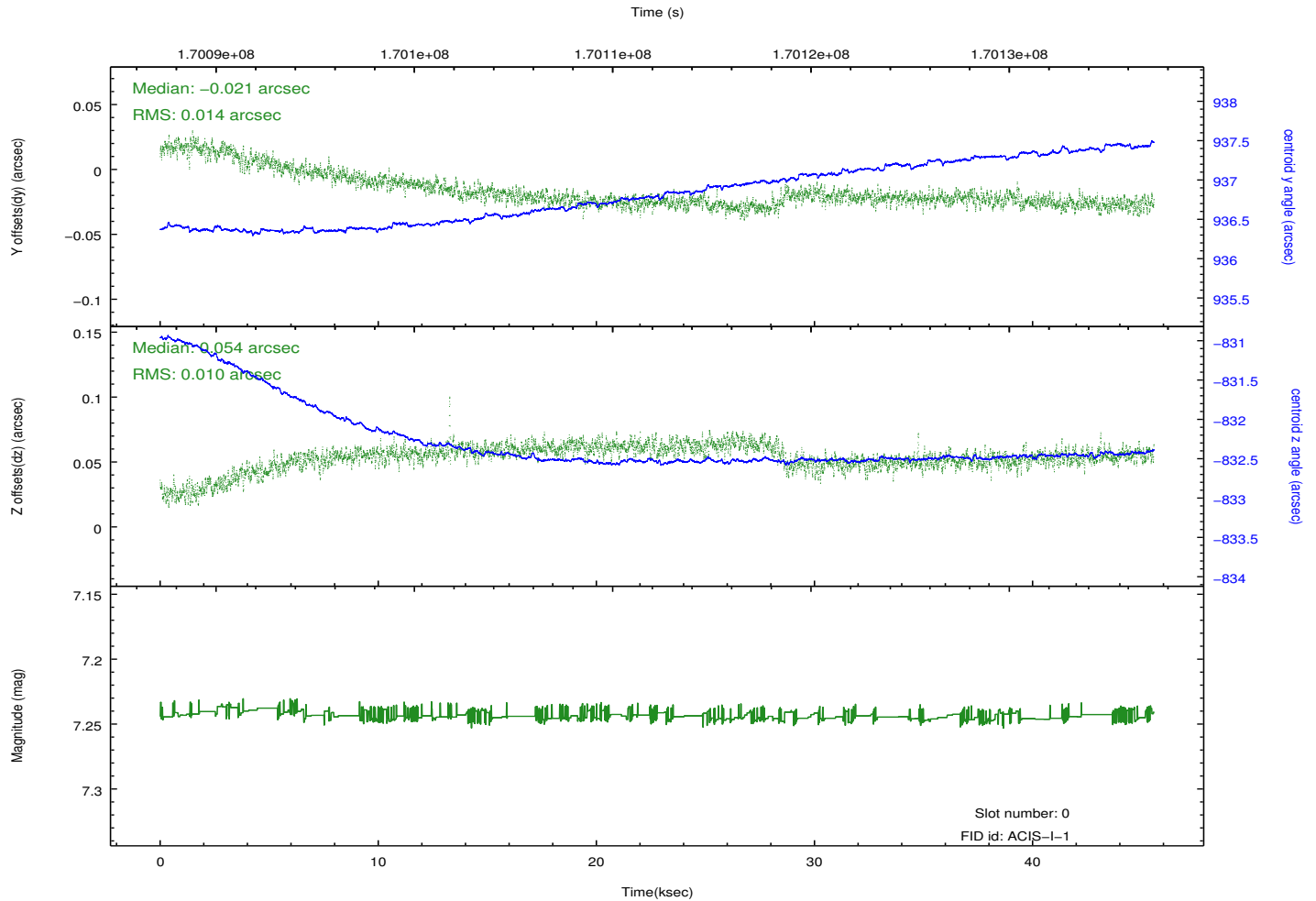
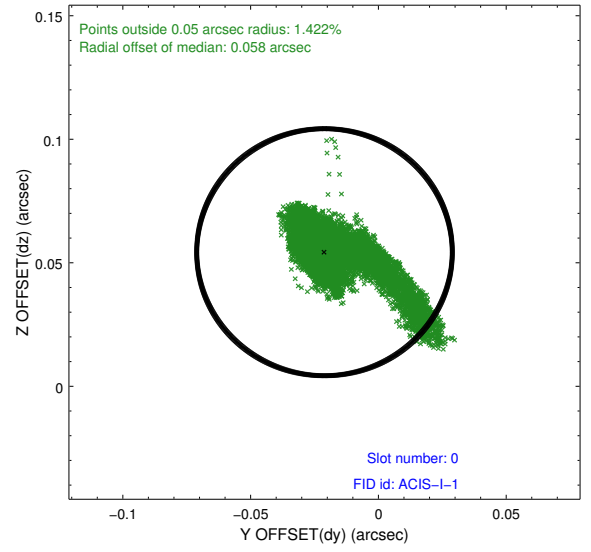
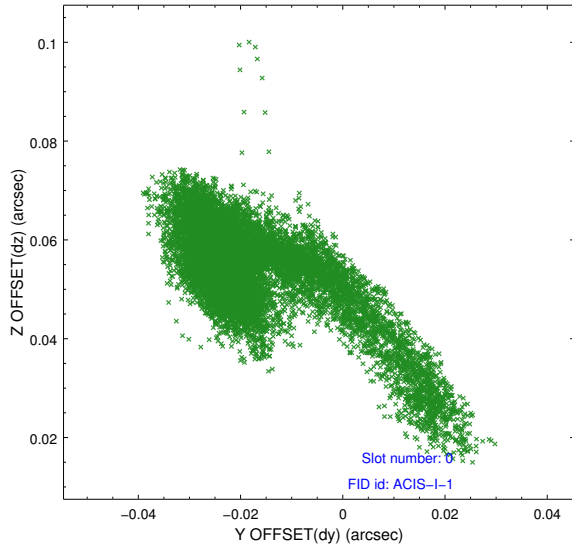


2.4.5 Slot 7

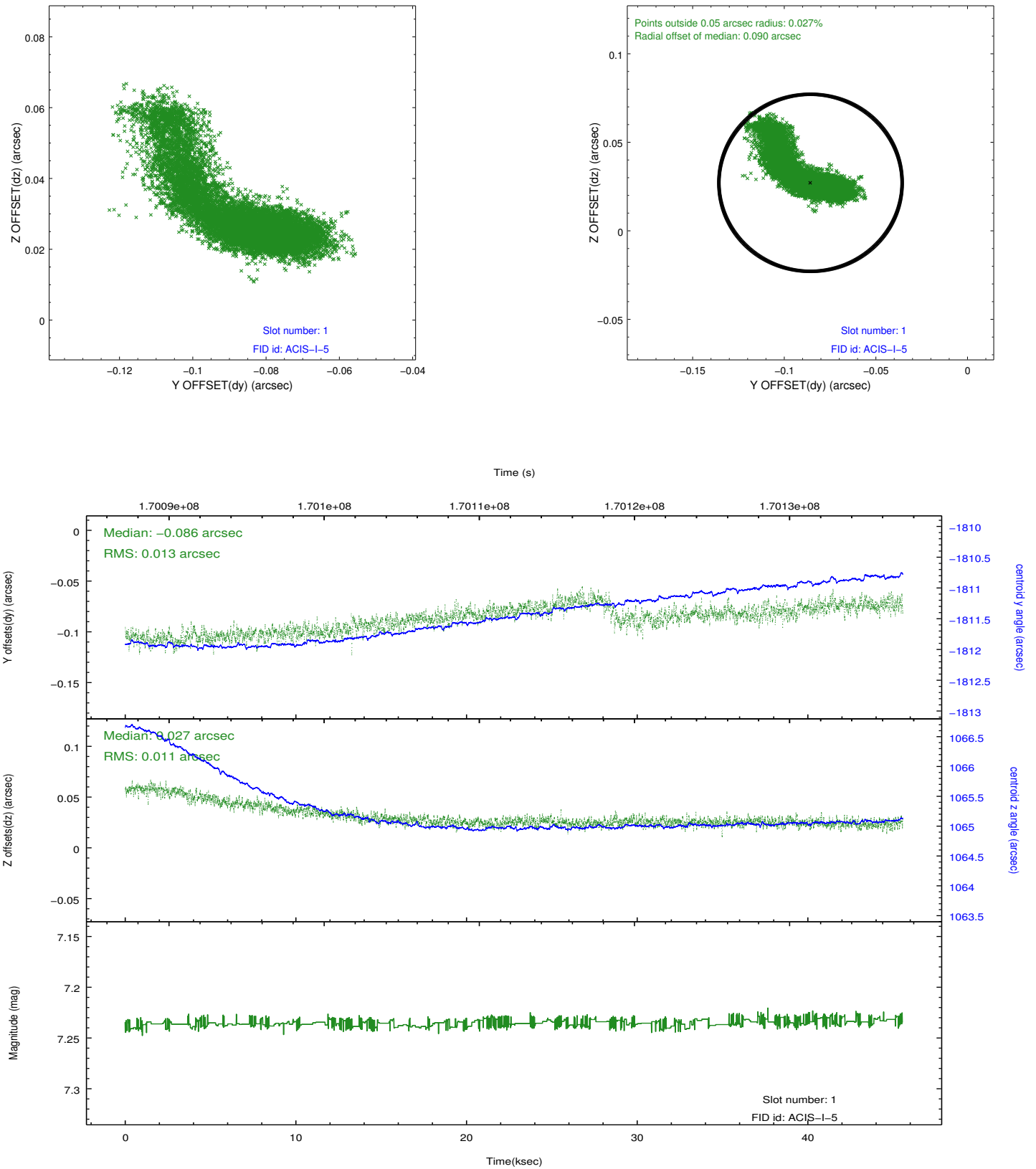


2.5 FID Slots

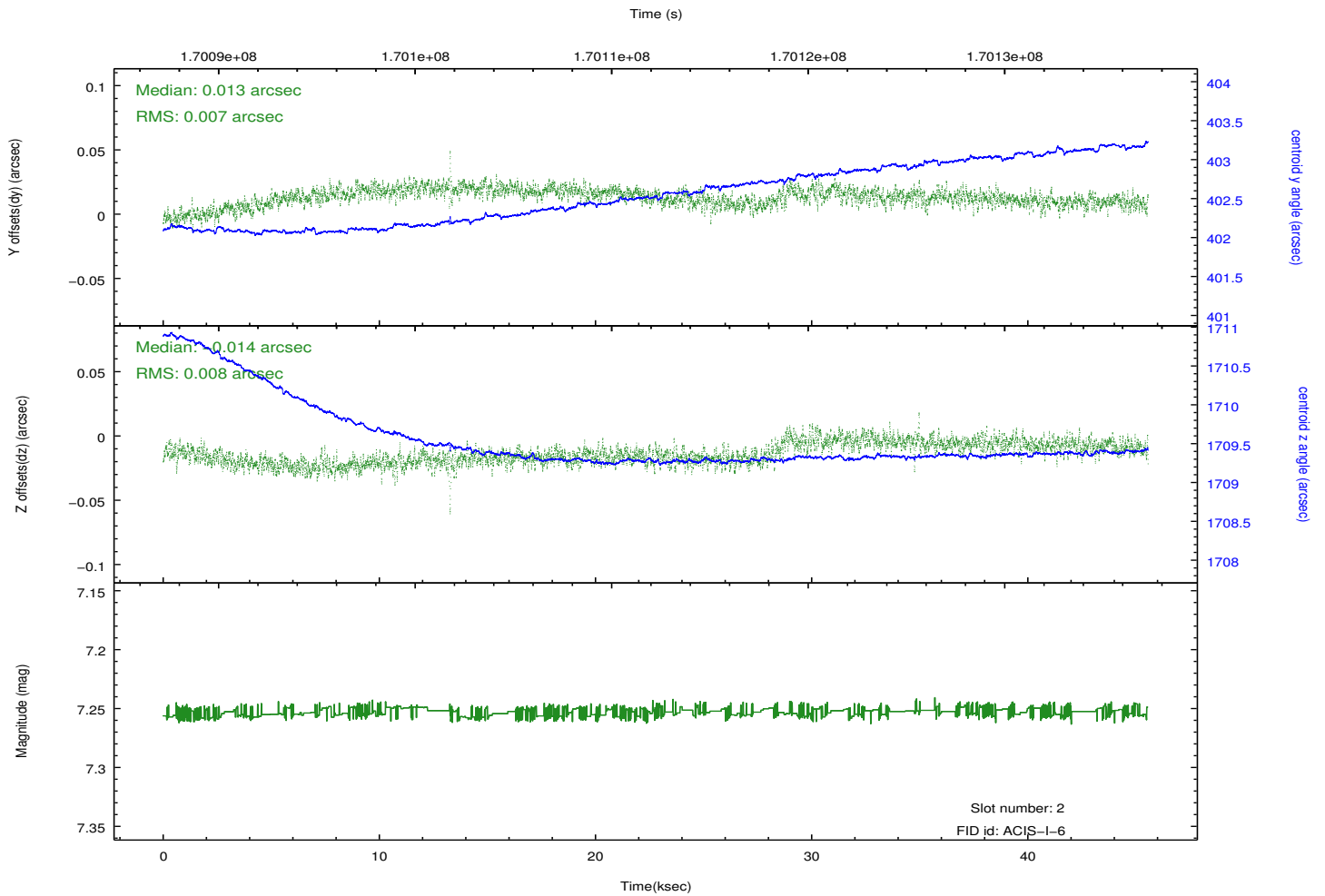
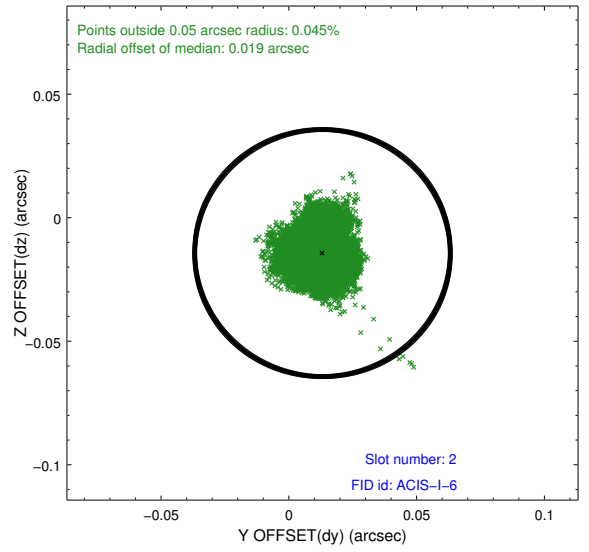
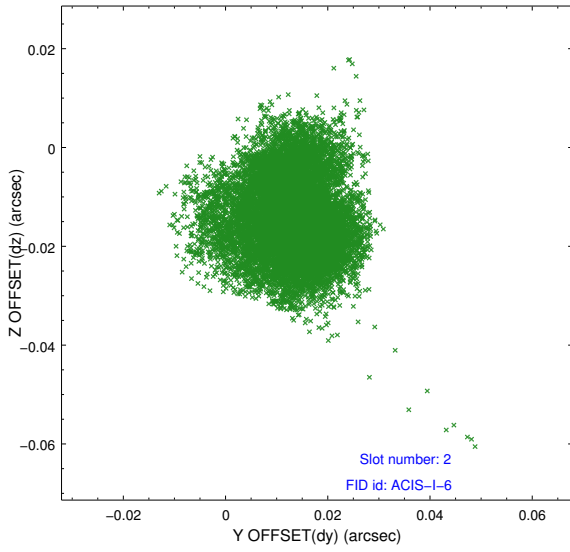
2.5.1 Slot 0



2.5.2 Slot 1



2.5.3 Slot 2



A Summary

A.1 Status

V&V Scientist	Jen Lauer
V&V Date (YYYY-MM-DD)	2012.11.15
V&V Edition	1
V&V Disposition and Status	OK
V&V Charge Time	45.545

A.2 Comments