

# V&V Reference Report

## L2 ASCDS Version : 8.4.5

Observation 4211 - L2 Version 3  
Chandra X-Ray Center

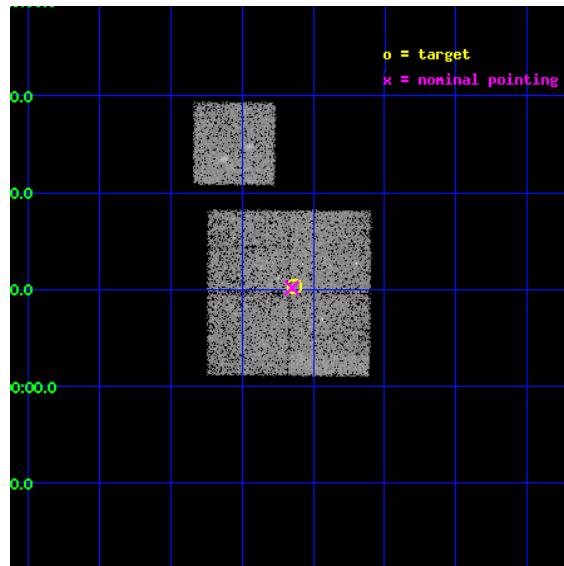
L2 Processing Date : Oct 24 2012

## Contents

<b>1</b>	<b>Front</b>	<b>2</b>
<b>2</b>	<b>OBI</b>	<b>3</b>
2.1	OBI . . . . .	3
2.1.1	Images . . . . .	3
2.1.2	Bias . . . . .	3
2.1.3	Parameters . . . . .	4
2.1.4	Events . . . . .	4
2.2	Compared Parameters . . . . .	5
2.3	Aspect . . . . .	6
2.4	Star Slots . . . . .	9
2.4.1	Slot 3 . . . . .	9
2.4.2	Slot 4 . . . . .	10
2.4.3	Slot 5 . . . . .	11
2.4.4	Slot 6 . . . . .	12
2.4.5	Slot 7 . . . . .	13
2.5	FID Slots . . . . .	14
2.5.1	Slot 0 . . . . .	14
2.5.2	Slot 1 . . . . .	15
2.5.3	Slot 2 . . . . .	16
<b>A</b>	<b>Summary</b>	<b>17</b>
A.1	Status . . . . .	17
A.2	Comments . . . . .	17

# 1 Front

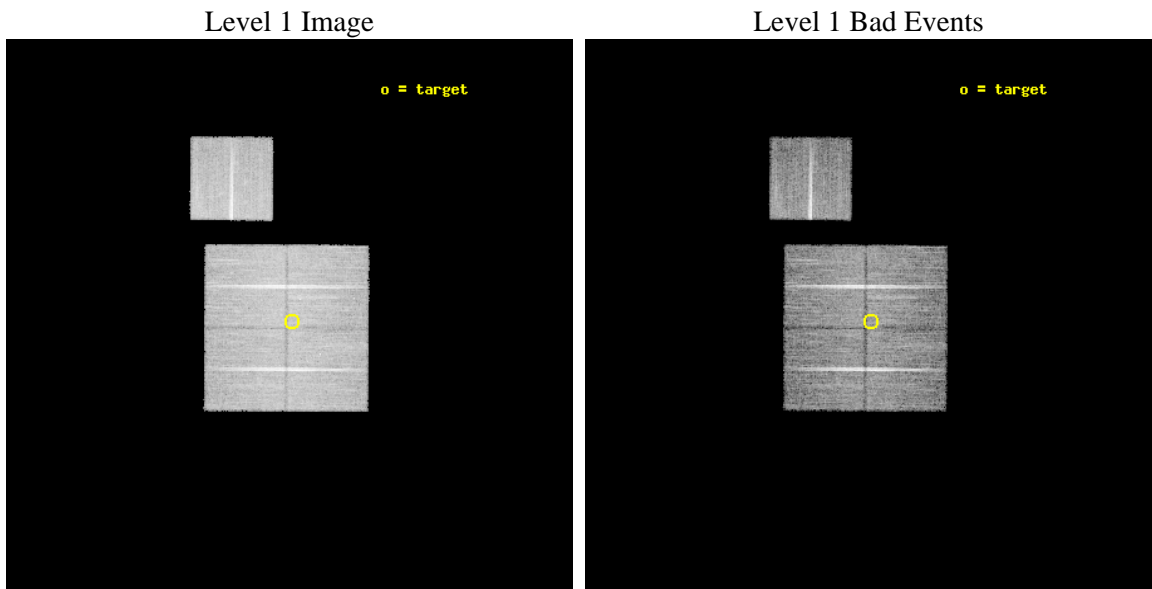
seq_num	800367	Sequence number
obs_id	4211	Observation id
title	CHANDRA OBSERVATIONS OF DLS SHEAR-SELECTED CLUSTERS	Proposal title
observer	Prof. John Hughes	Principal investigator
object	DLS J1054-0549	Source name
dtycycle	0	&#160
cycle	P	events from which exps? Prim/Second/Both
ra_targ	163.533333	Observer's specified target RA [deg]
dec_targ	-5.828889	Observer's specified target Dec [deg]
ra_nom	163.53761196182	Nominal RA [deg]
dec_nom	-5.8306648298676	Nominal Dec [deg]
roll_nom	0.39616496355013	Nominal Roll [deg]
revision	3	Processing version of data
ontime	20577.759000063	Sum of GTIs [s]
livetime	20308.895429601	Livetime [s]
ontime0	20577.758980155	Sum of GTIs [s]
ontime1	20580.899960399	Sum of GTIs [s]
ontime2	20577.758980185	Sum of GTIs [s]
ontime3	20577.759000063	Sum of GTIs [s]
ontime6	20580.899960399	Sum of GTIs [s]
l2events	45794	Number of level 2 events



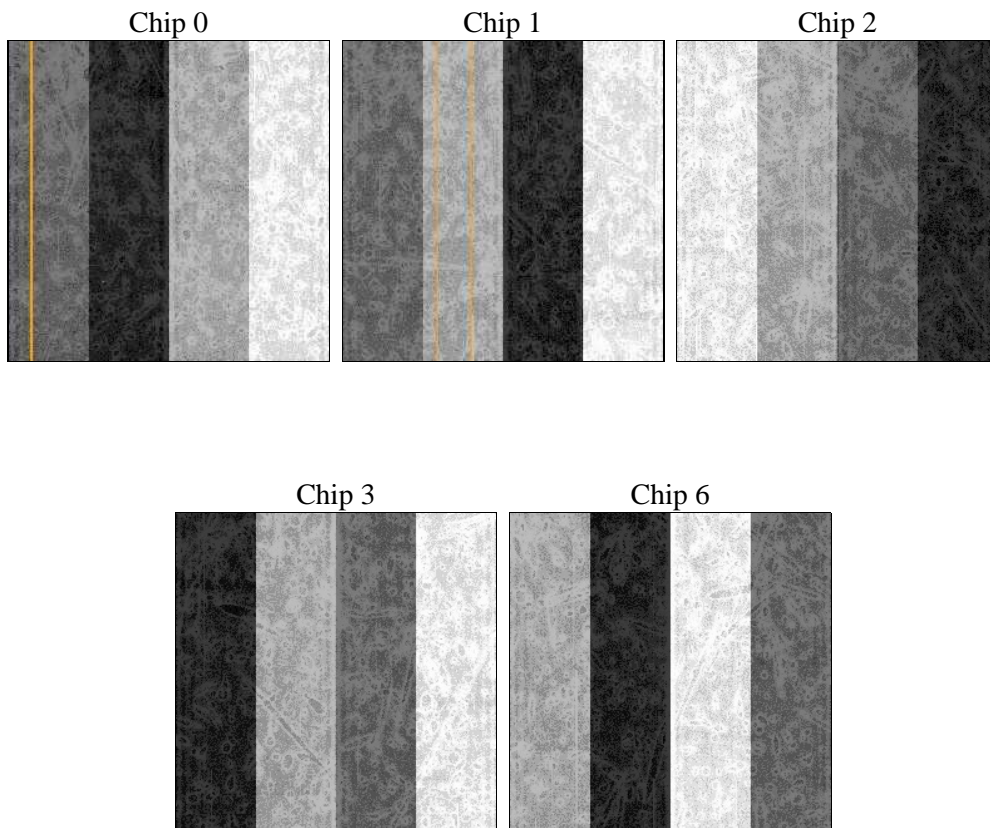
## 2 OBI

### 2.1 OBI

#### 2.1.1 Images



#### 2.1.2 Bias



### 2.1.3 Parameters

obi_num	0	Obi number	sched_exp_time	20400.000000	[s] Scheduled observation exposure time
ascdsver	8.4.5	Processing system revision	ontime	20577.759000063	Sum of GTIs [s]
caldbver	4.5.2	&#160	ontime0	20577.758980155	Sum of GTIs [s]
date	2012-10-24T13:37:20	Date and time of file creation	ontime1	20580.899960399	Sum of GTIs [s]
revision	3	Processing version of data	ontime2	20577.758980185	Sum of GTIs [s]
			ontime3	20577.759000063	Sum of GTIs [s]
			ontime6	20580.899960399	Sum of GTIs [s]
			l1events	555137	Number of level 1 events

### 2.1.4 Events

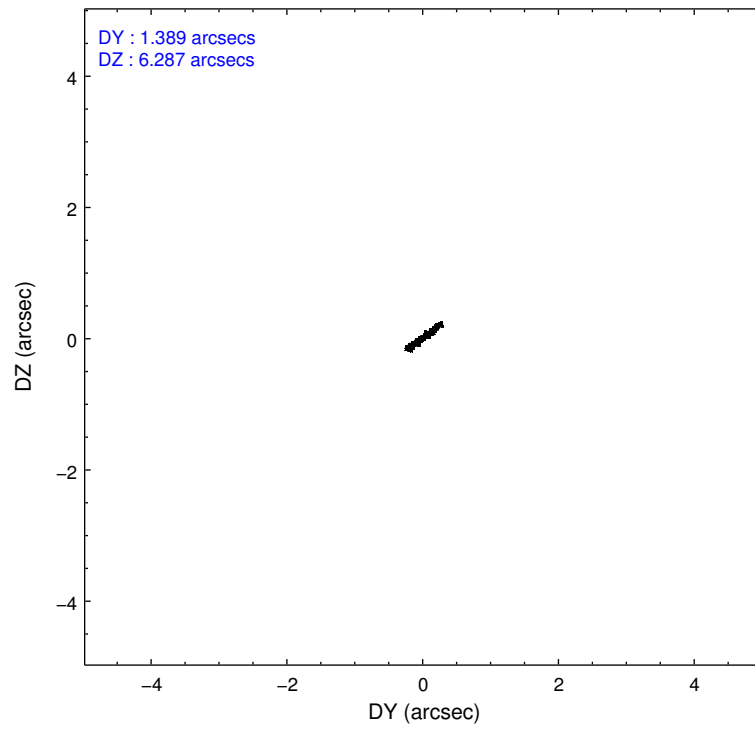
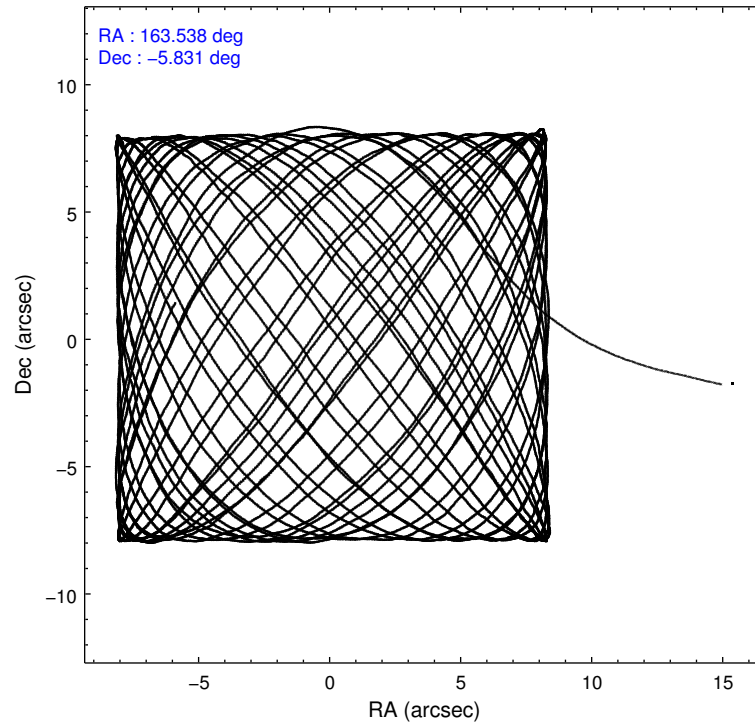
	ccd 0	ccd 1	ccd 2	ccd 3	ccd 6
level 1 events	103680	107259	119180	111982	113036
rejected events	93057	94884	108272	101707	101621
rejected %	89%	88%	90%	90%	89%

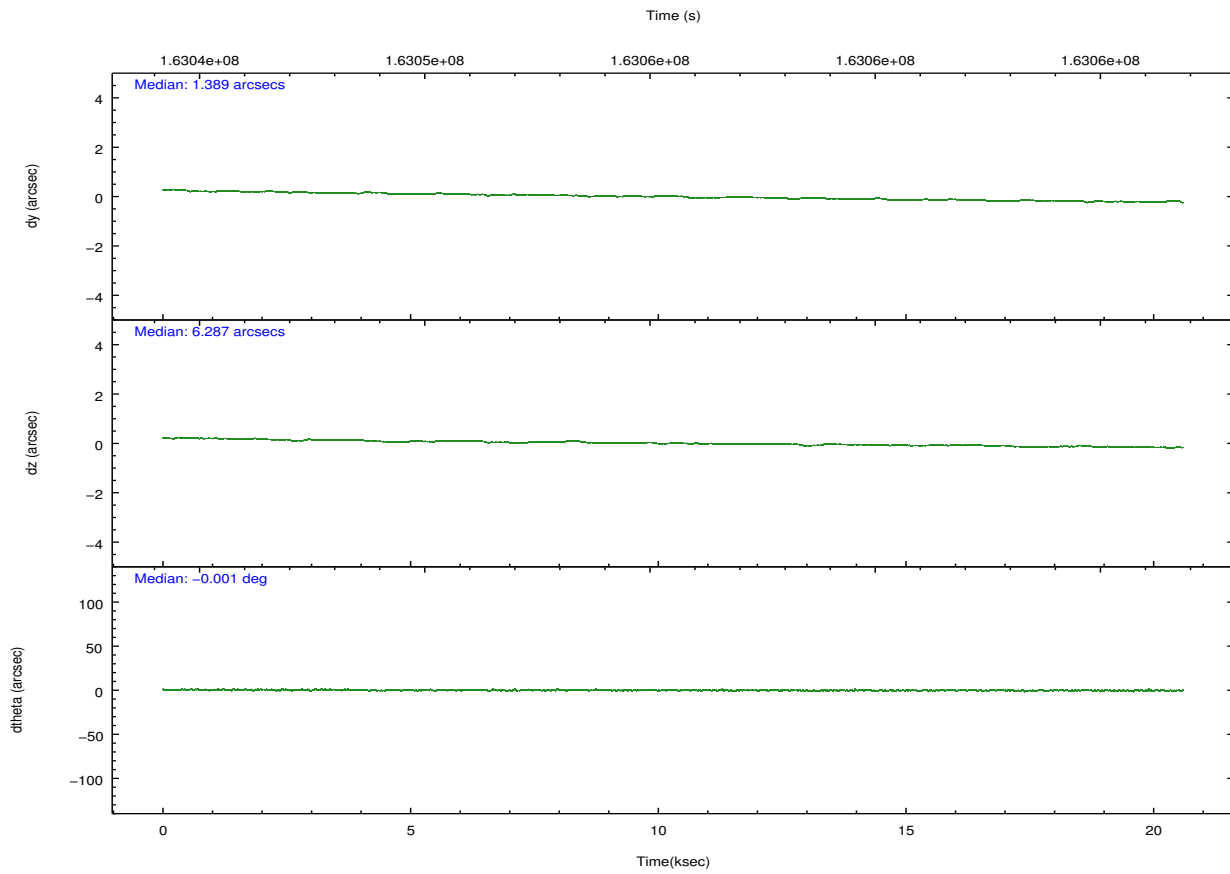
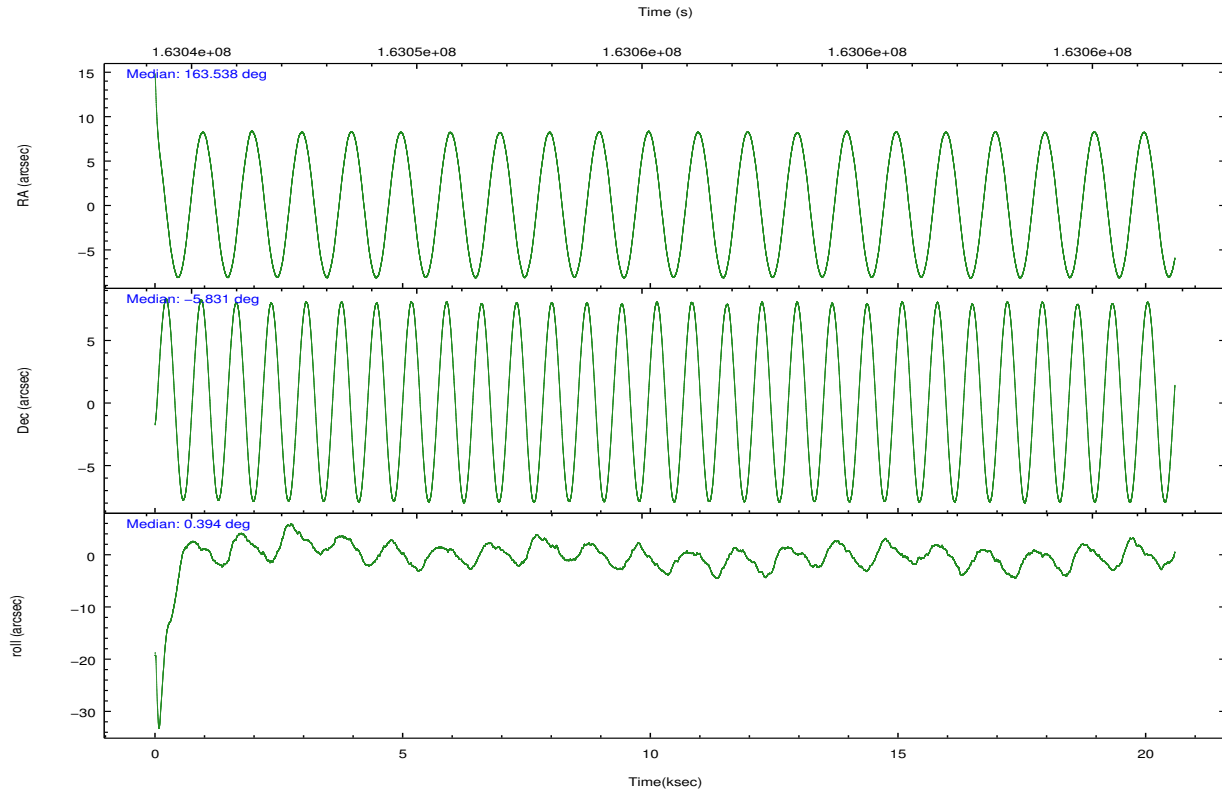
	ccd 0	ccd 1	ccd 2	ccd 3	ccd 6
grade 0 events	3639	4521	3986	3729	4132
	3%	4%	3%	3%	3%
grade 1 events	47	39	50	59	61
	0%	0%	0%	0%	0%
grade 2 events	2486	2541	2505	2182	2357
	2%	2%	2%	1%	2%
grade 3 events	1223	1461	1246	1218	1356
	1%	1%	1%	1%	1%
grade 4 events	1216	1461	1233	1209	1285
	1%	1%	1%	1%	1%
grade 5 events	3857	4113	3816	4264	4436
	3%	3%	3%	3%	3%
grade 6 events	2098	2443	1975	1973	2323
	2%	2%	1%	1%	2%
grade 7 events	89114	90680	104369	97348	97086
	85%	84%	87%	86%	85%

## 2.2 Compared Parameters

Parameter	Planned	Actual	Parameter	Planned	Actual
Instrument	ACIS	ACIS	Obspar format version number	7	7
Detector	ACIS-01236	ACIS-01236	Obspar file type	PREDICTED	ACTUAL
Grating	NONE	NONE	Obspar update status	NONE	UPDATED
Data mode	VFAINT	VFAINT	Number of optional ACIS chips dropped	0	0
Observation mode	POINTING	POINTING	On-chip summing requested	N	N
[deg] Pointing RA	163.513950	163.5376119618228	Subarray requested	NONE	NONE
[deg] Pointing Dec	-5.844619	-5.830664829867577	Alternating exposures requested	N	N
[deg] Pointing Roll	0.185066	0.3961649635501253	[s] Primary exposure time	0.000000	3.1
[mm] SIM focus pos	-0.782348	-0.7809083437167272			
[mm] SIM defocus	0	0.001439871863259334			
[mm] SIM translation stage pos	-233.592463	-233.5874344608287			
[mm] SIM translation stage offset	0	-0.005018542100998502			
[s] Observation start time (MET)	163045406.184000	163044379.05112			
Observation start date	2003-03-03T02:22:22	2003-03-03T02:06:19			
[s] Observation end time (MET)	163065806.184000	163066423.21454			
Observation end date	2003-03-03T08:02:22	2003-03-03T08:13:43			
Read mode	TIMED	TIMED			

## 2.3 Aspect



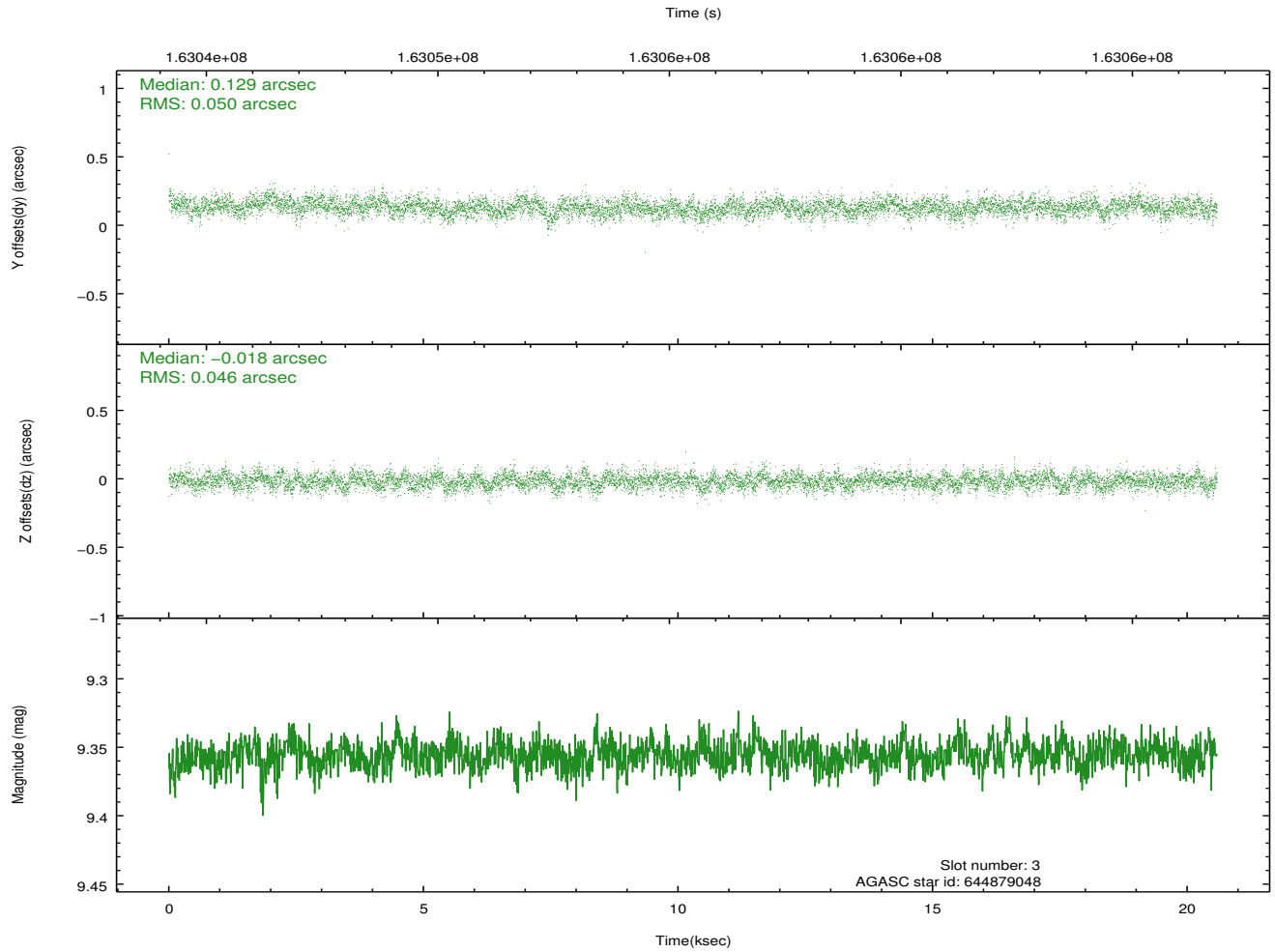
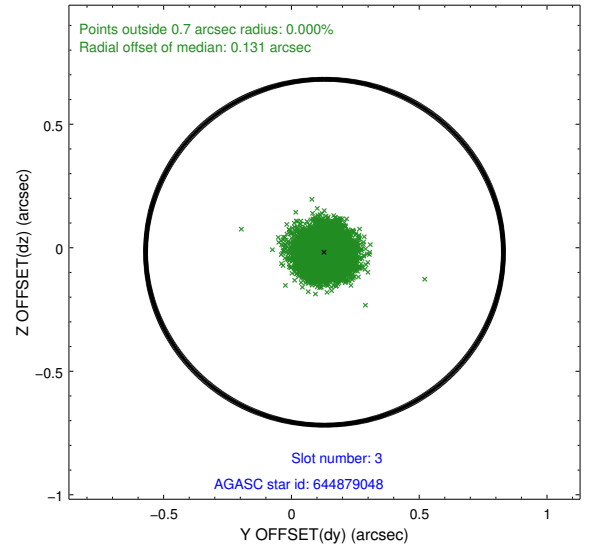
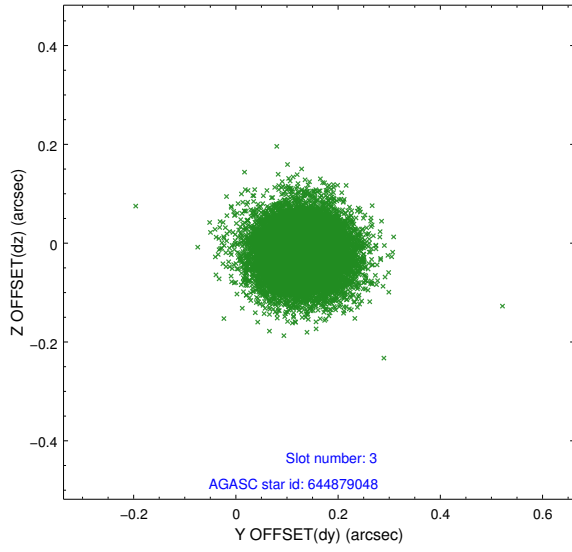


### Slot Statistics

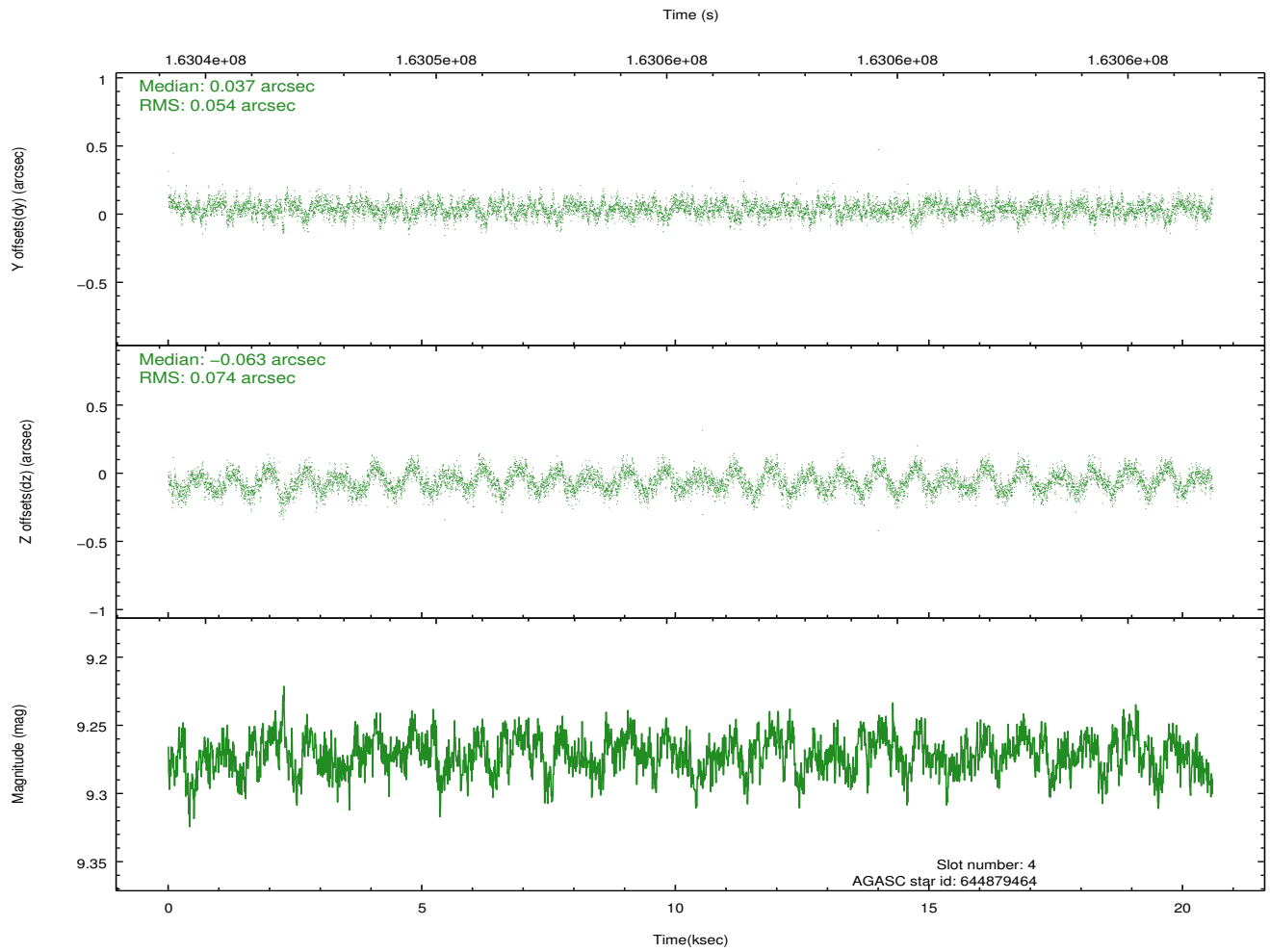
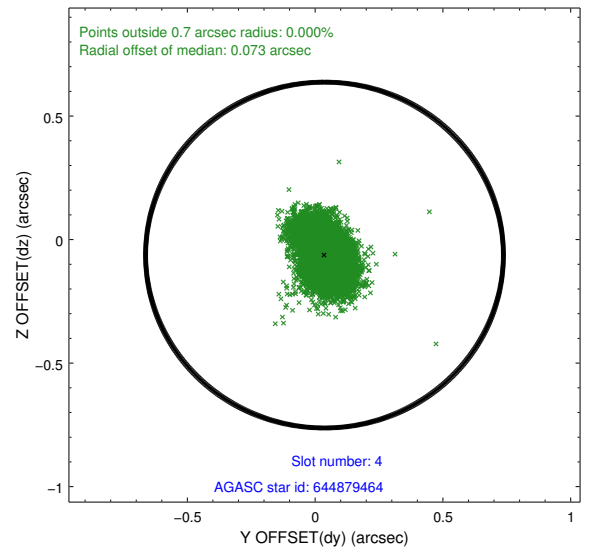
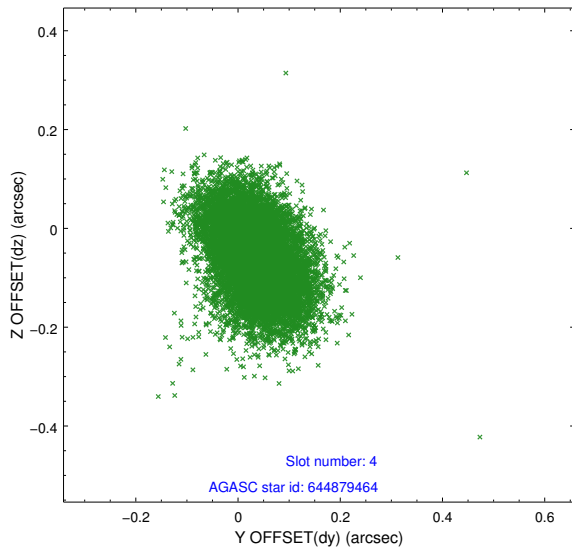
slot	status	id	mag	n_pts	med_dy	med_dz	dr1	dr2	ra	dec	mean_y	mean_z
0	FID	ACIS-I-1	7.25	5022	0.006	-0.004	0.009	0.018	0.000000	0.000000	938.44	-829.69
1	FID	ACIS-I-5	7.24	5022	-0.086	0.044	0.009	0.023	0.000000	0.000000	-1809.62	1067.81
2	FID	ACIS-I-6	7.26	5022	-0.012	0.031	0.009	0.022	0.000000	0.000000	403.82	1712.46
3	GUIDE	644879048	9.36	10038	0.129	-0.018	0.073	0.117	162.964974	-5.788659	-1965.24	206.89
4	GUIDE	644879464	9.27	10040	0.037	-0.063	0.097	0.159	163.397635	-5.401358	-411.71	1597.11
5	GUIDE	644880304	9.30	10038	0.087	0.003	0.084	0.138	163.275517	-5.533070	-850.53	1124.48
6	GUIDE	644882264	9.16	9967	-0.183	0.010	0.079	0.127	164.155509	-5.895993	2296.76	-193.34
7	GUIDE	644883792	10.12	10030	-0.071	0.068	0.129	0.204	164.124196	-5.883086	2185.28	-146.43

## 2.4 Star Slots

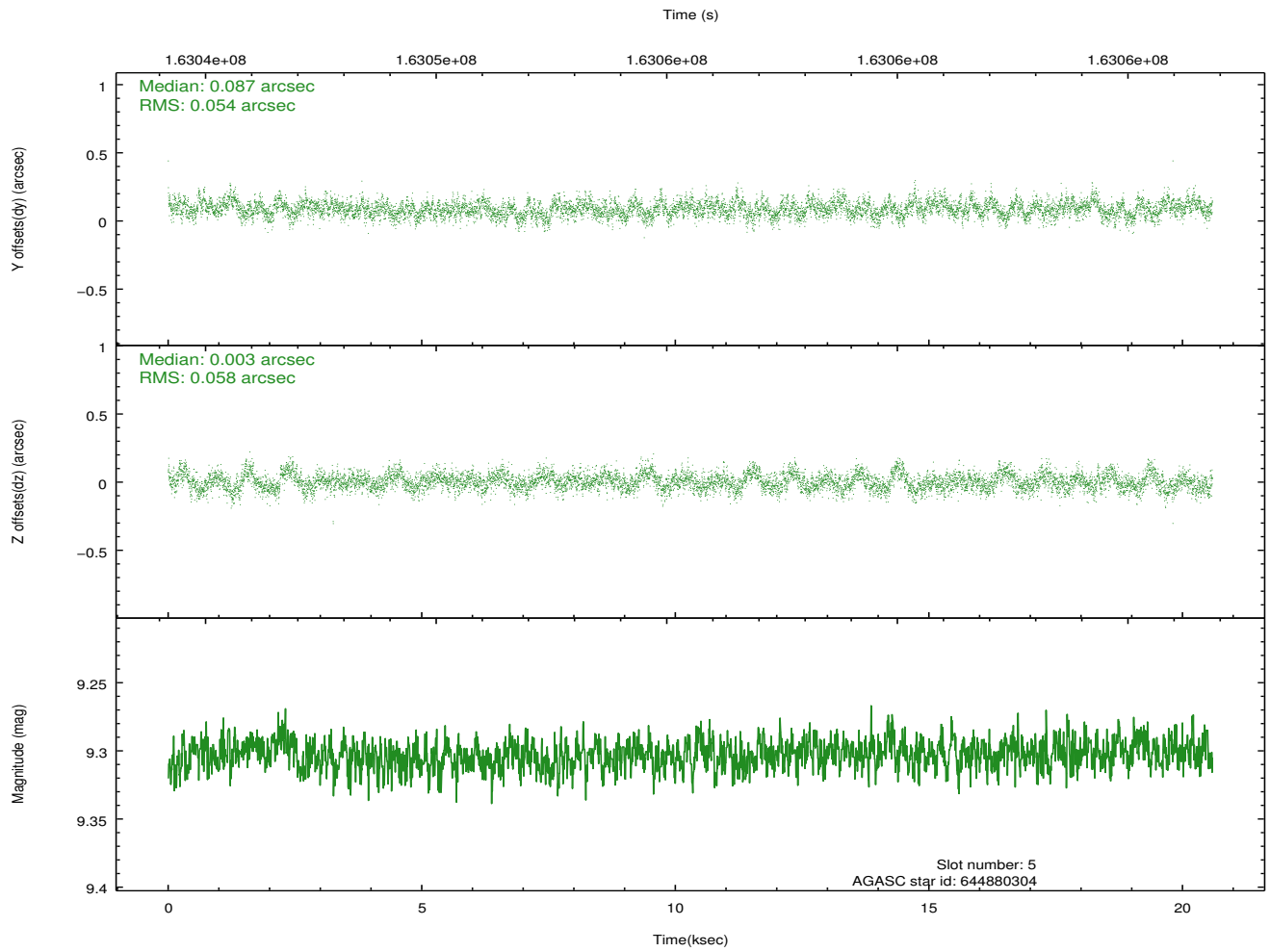
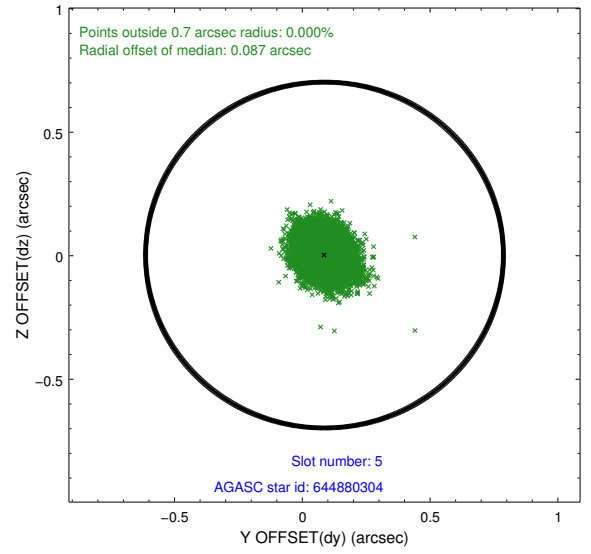
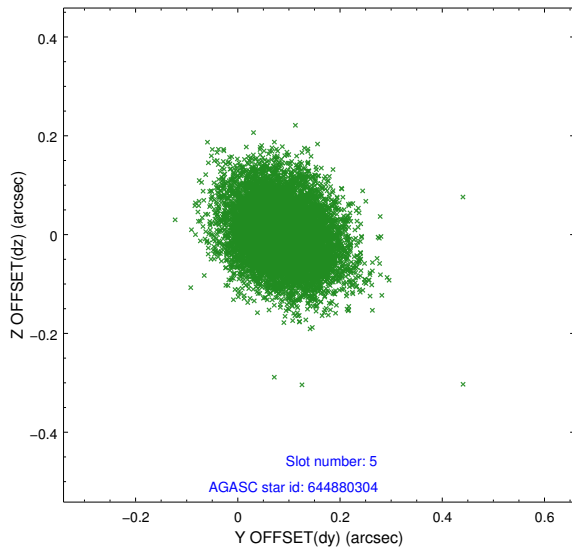
### 2.4.1 Slot 3



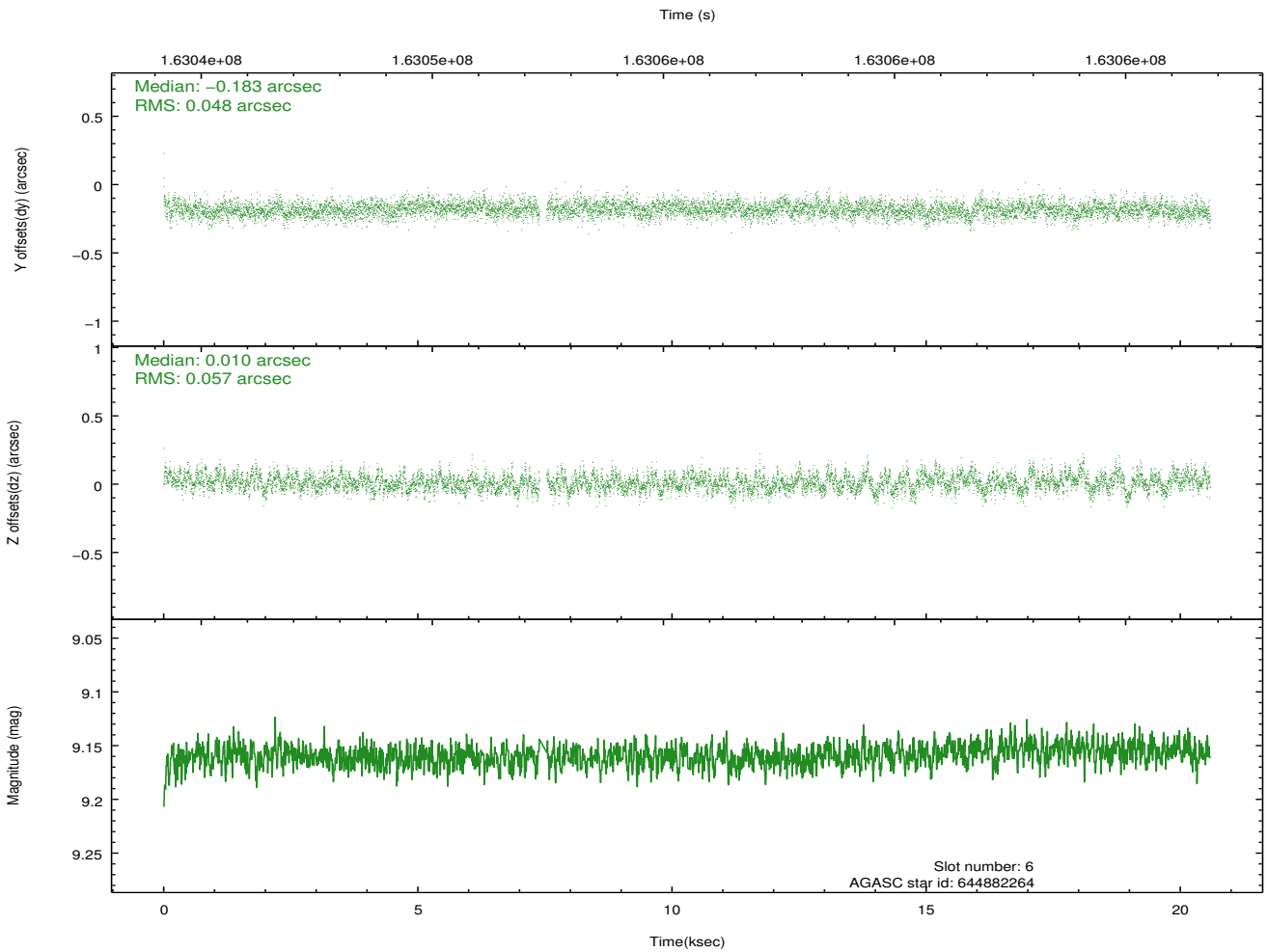
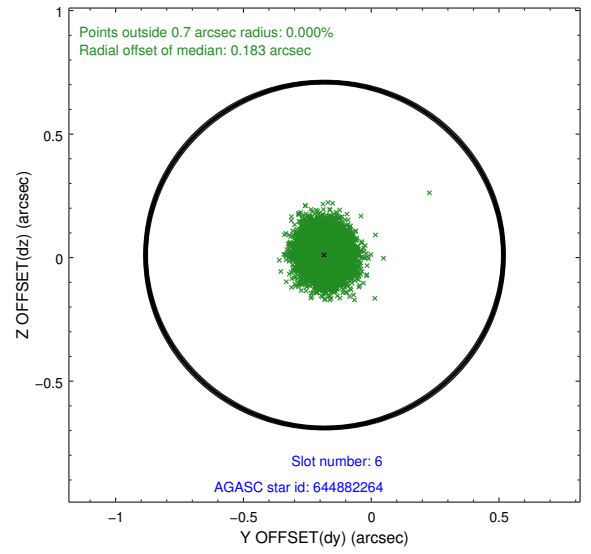
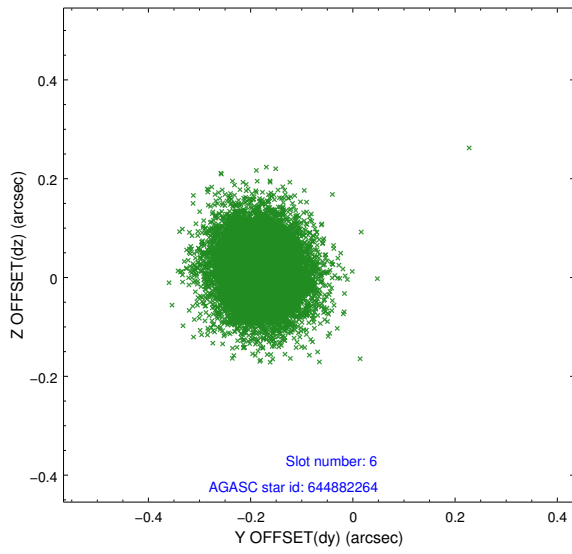
### 2.4.2 Slot 4



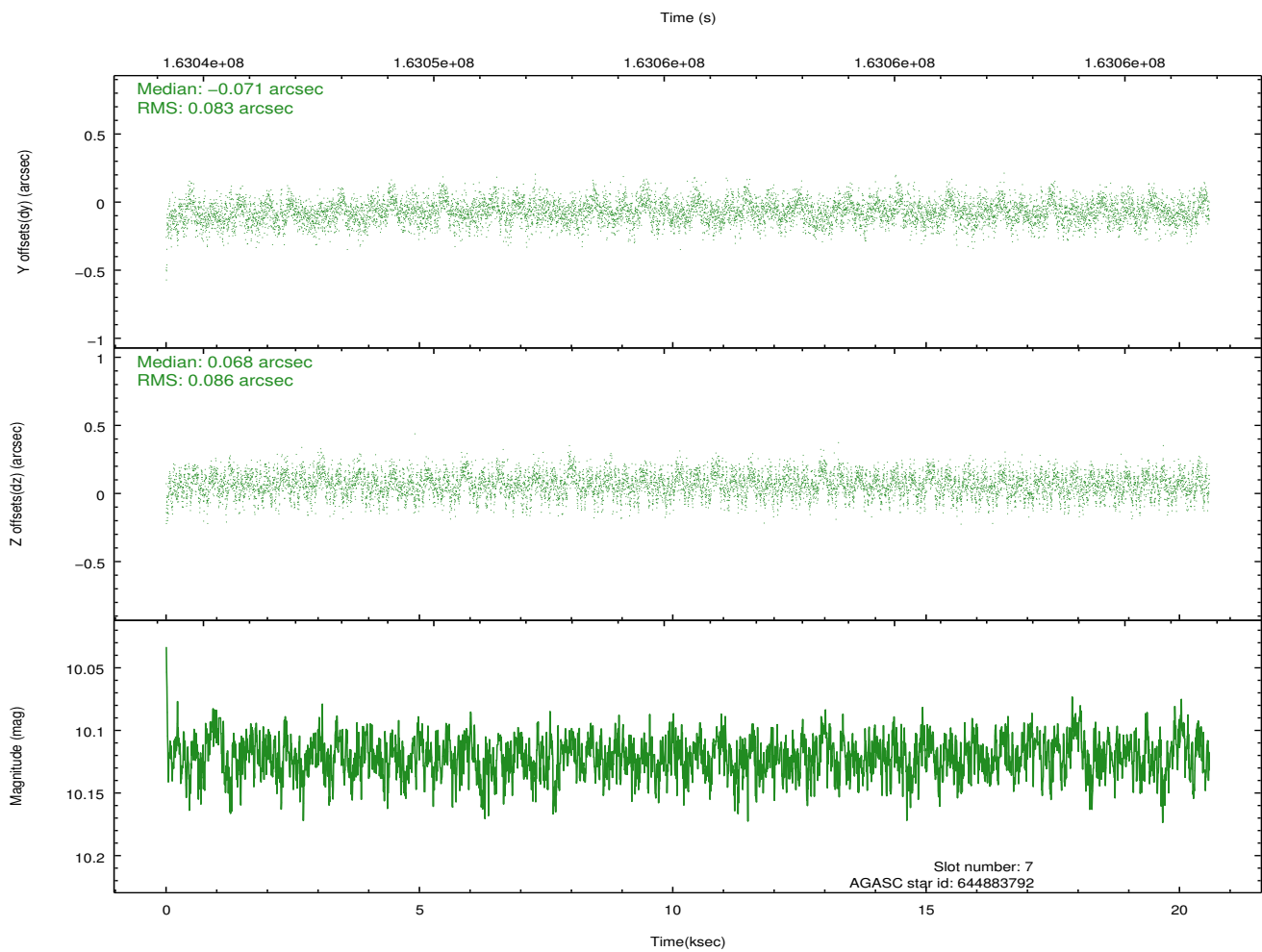
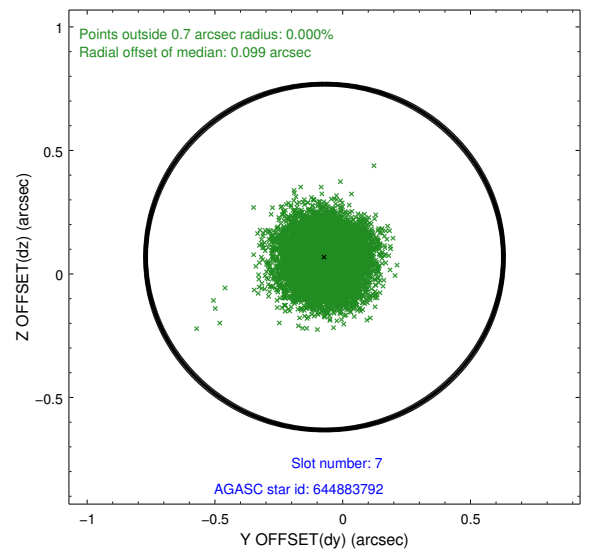
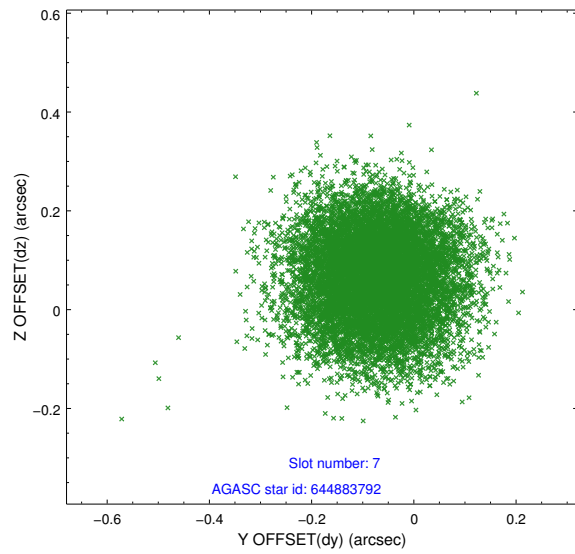
### 2.4.3 Slot 5



### 2.4.4 Slot 6

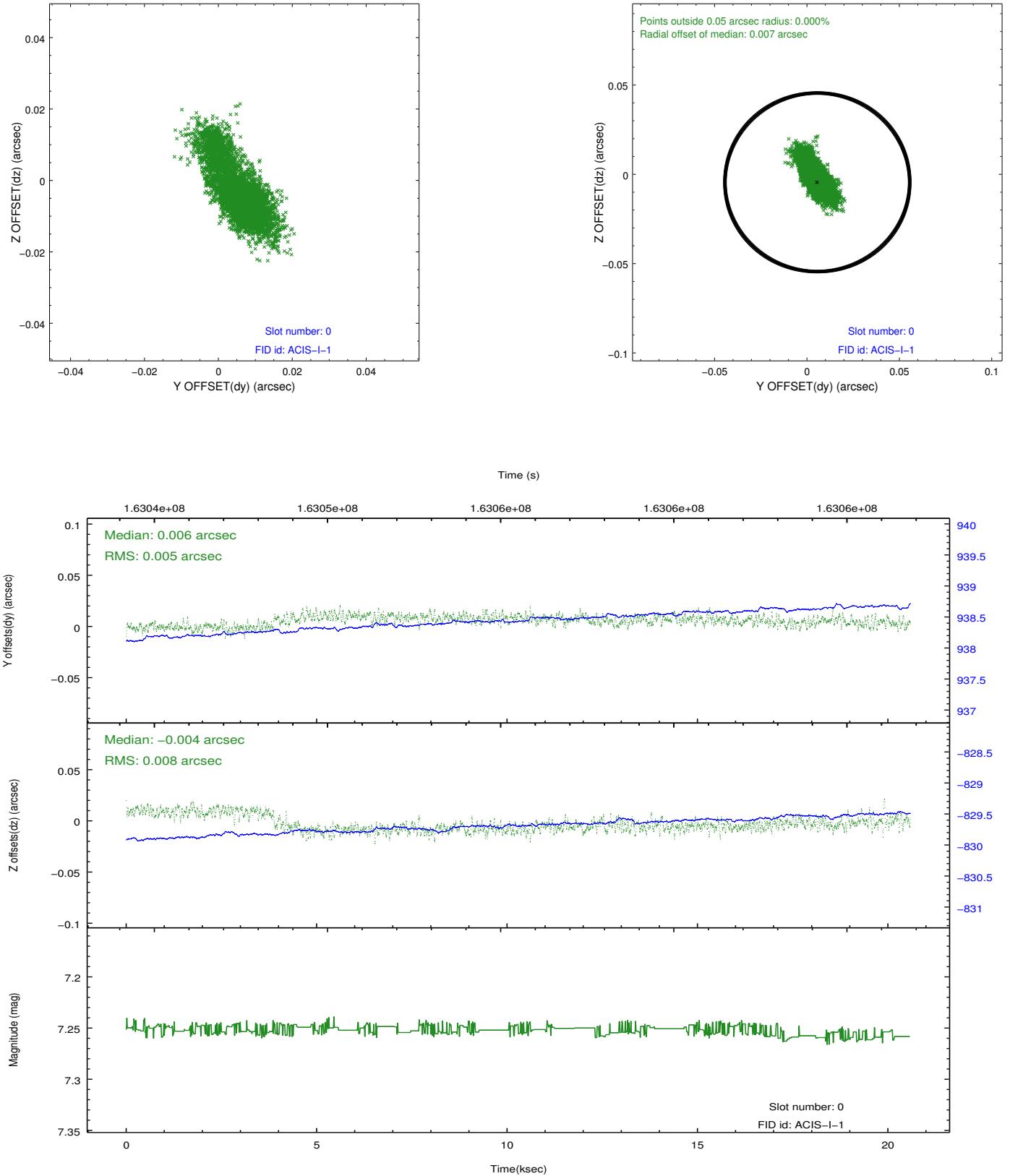


## 2.4.5 Slot 7

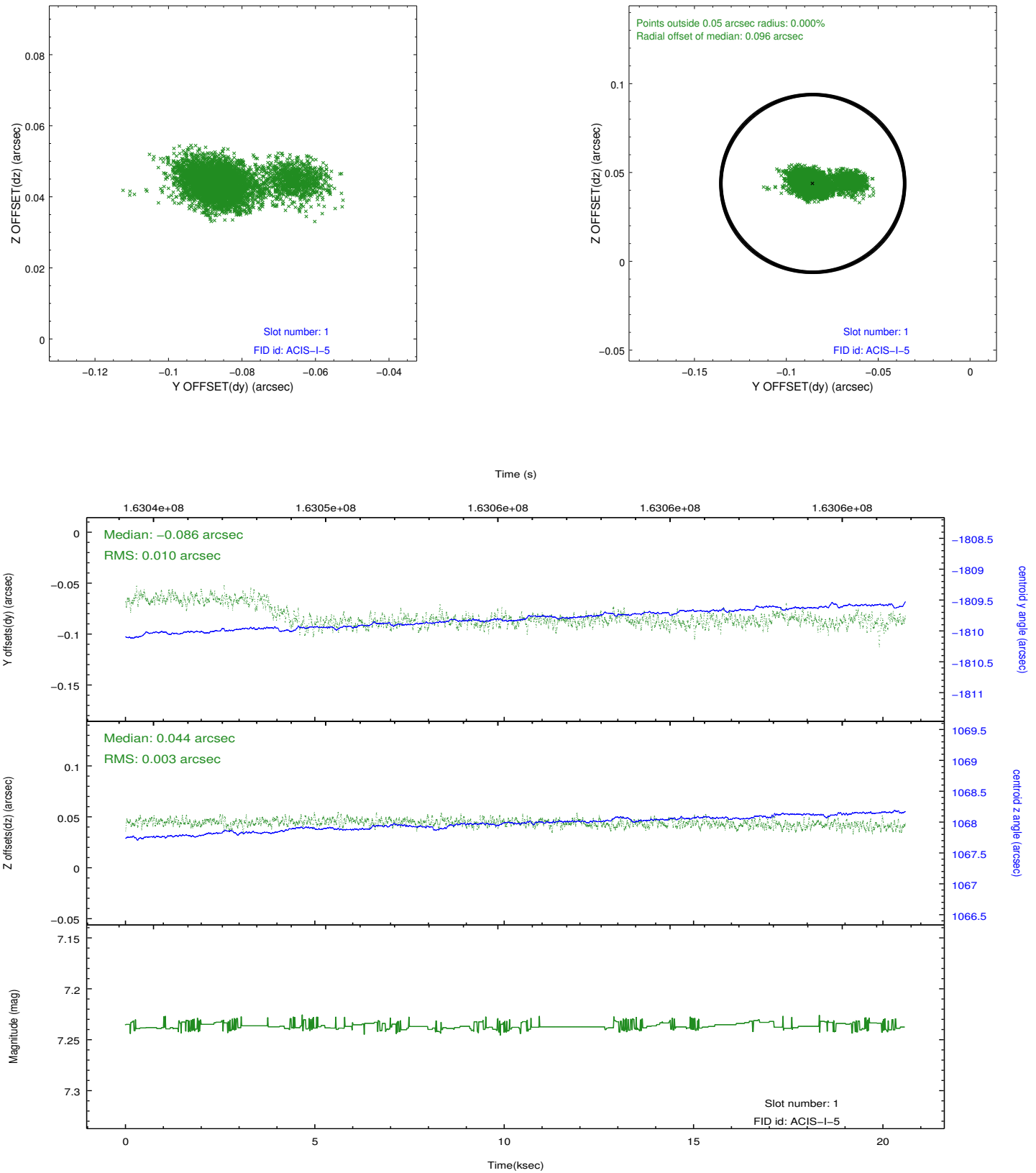


## 2.5 FID Slots

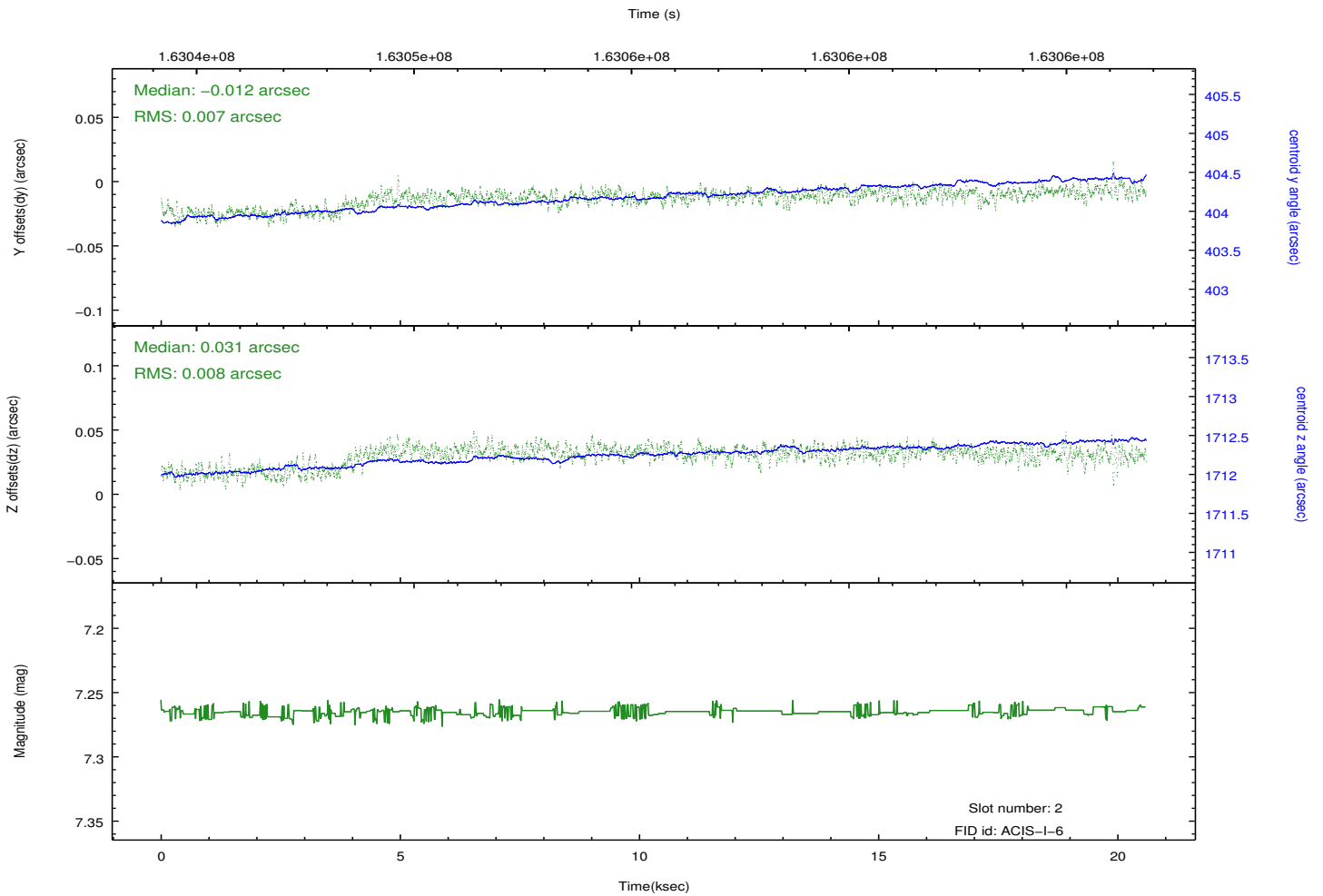
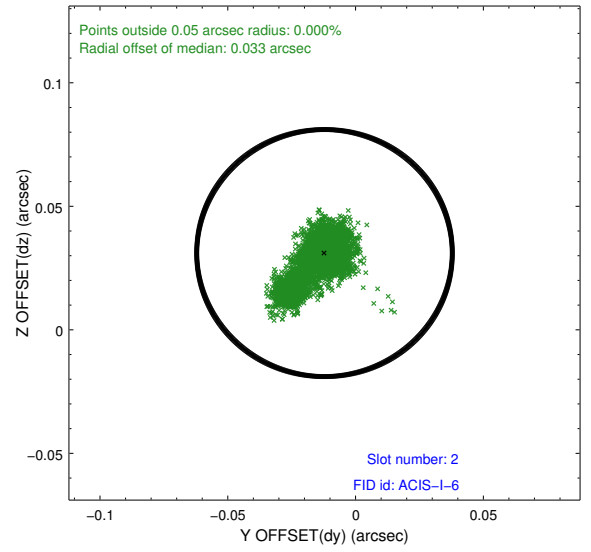
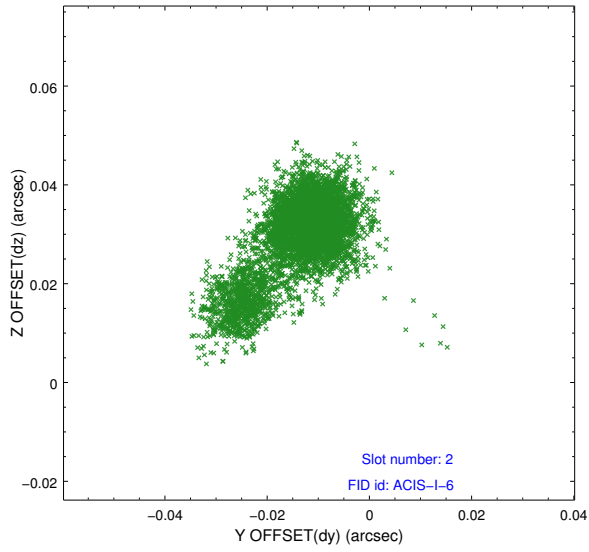
### 2.5.1 Slot 0



## 2.5.2 Slot 1



### 2.5.3 Slot 2



# A Summary

## A.1 Status

V&V Scientist	Jen Lauer
V&V Date (YYYY-MM-DD)	2012.11.08
V&V Edition	1
V&V Disposition and Status	OK
V&V Charge Time	20.577

## A.2 Comments