

# V&V Reference Report

## L2 ASCDS Version : 8.4.5

Observation 4361 - L2 Version 3  
Chandra X-Ray Center

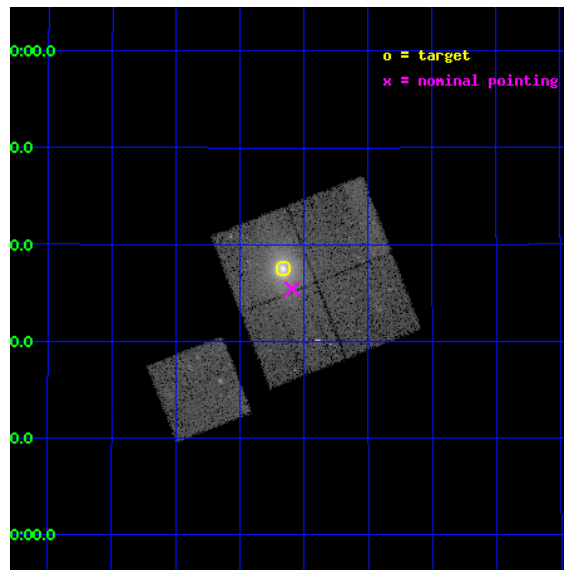
L2 Processing Date : Oct 13 2012

## Contents

<b>1</b>	<b>Front</b>	<b>2</b>
<b>2</b>	<b>OBI</b>	<b>3</b>
2.1	OBI . . . . .	3
2.1.1	Images . . . . .	3
2.1.2	Bias . . . . .	3
2.1.3	Parameters . . . . .	4
2.1.4	Events . . . . .	4
2.2	Compared Parameters . . . . .	5
2.3	Aspect . . . . .	6
2.4	Star Slots . . . . .	9
2.4.1	Slot 3 . . . . .	9
2.4.2	Slot 4 . . . . .	10
2.4.3	Slot 5 . . . . .	11
2.4.4	Slot 6 . . . . .	12
2.4.5	Slot 7 . . . . .	13
2.5	FID Slots . . . . .	14
2.5.1	Slot 0 . . . . .	14
2.5.2	Slot 1 . . . . .	15
2.5.3	Slot 2 . . . . .	16
<b>A</b>	<b>Summary</b>	<b>17</b>
A.1	Status . . . . .	17
A.2	Comments . . . . .	17

# 1 Front

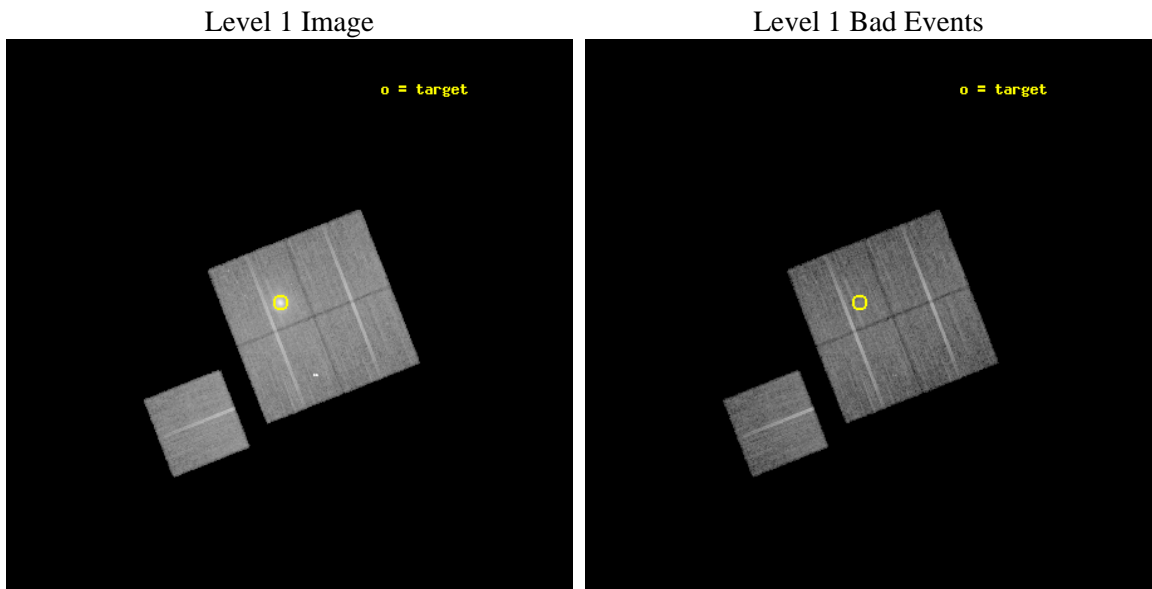
seq_num	800224	Sequence number
obs_id	4361	Observation id
title	RXJ1720.1+2638: A NEARLY RELAXED CLUSTER WITH A FAST MOVING CORE?	&#160
observer	Dr. Pasquale Mazzotta	Principal investigator
object	RXJ1720.1+2638	Source name
dtcycle	0	&#160
cycle	P	events from which exps? Prim/Second/Both
ra_targ	260.0413	Observer's specified target RA [deg]
dec_targ	26.625	Observer's specified target Dec [deg]
ra_nom	260.0239201864	Nominal RA [deg]
dec_nom	26.590655994743	Nominal Dec [deg]
roll_nom	248.58645546853	Nominal Roll [deg]
revision	3	Processing version of data
ontime	26008.161026686	Sum of GTIs [s]
livetime	25668.345255943	Livetime [s]
ontime0	26011.178876877	Sum of GTIs [s]
ontime1	26011.21991688	Sum of GTIs [s]
ontime2	26008.119986653	Sum of GTIs [s]
ontime3	26008.161026686	Sum of GTIs [s]
ontime6	26011.137836874	Sum of GTIs [s]
l2events	122231	Number of level 2 events



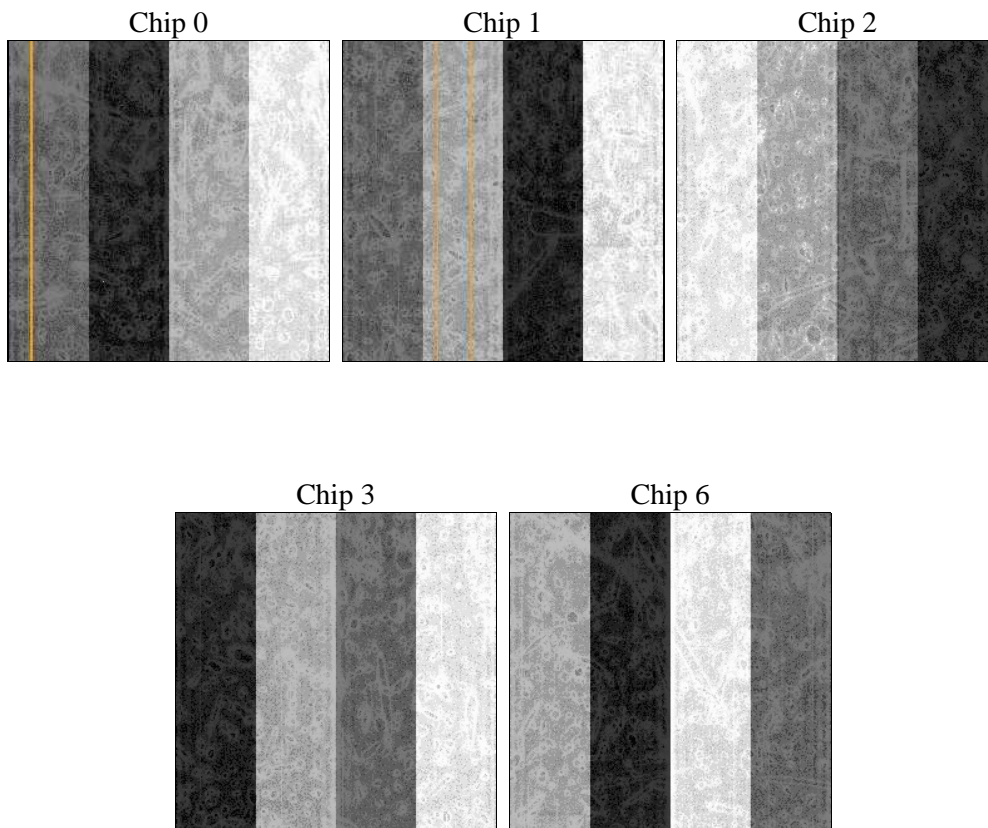
## 2 OBI

### 2.1 OBI

#### 2.1.1 Images



#### 2.1.2 Bias



### 2.1.3 Parameters

obi_num	1	Obi number	sched_exp_time	25889.879000	[s] Scheduled observation exposure time
ascdsver	8.4.5	Processing system revision	ontime	26008.161026686	Sum of GTIs [s]
caldbver	4.5.2	&#160	ontime0	26011.178876877	Sum of GTIs [s]
date	2012-10-14T00:44:52	Date and time of file creation	ontime1	26011.21991688	Sum of GTIs [s]
revision	3	Processing version of data	ontime2	26008.119986653	Sum of GTIs [s]
			ontime3	26008.161026686	Sum of GTIs [s]
			ontime6	26011.137836874	Sum of GTIs [s]
			l1events	708000	Number of level 1 events

### 2.1.4 Events

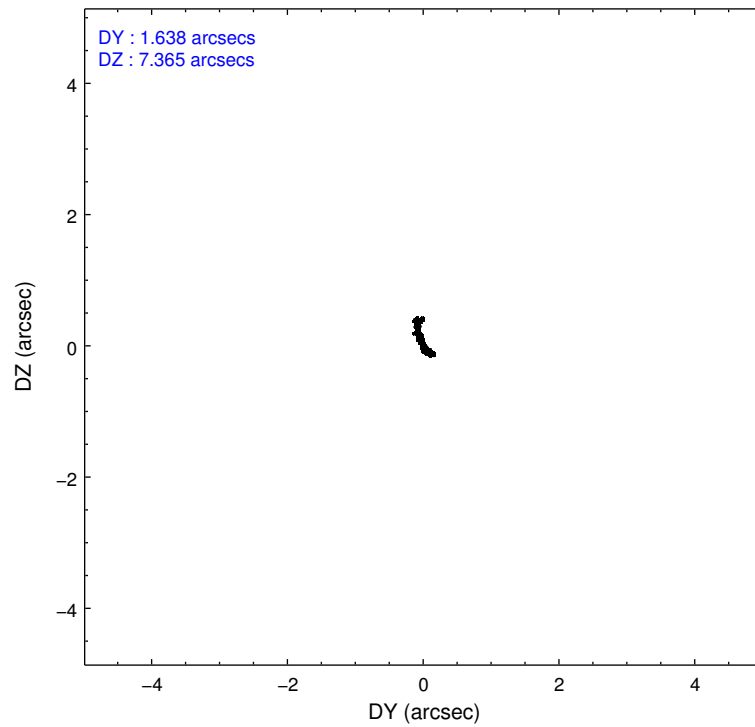
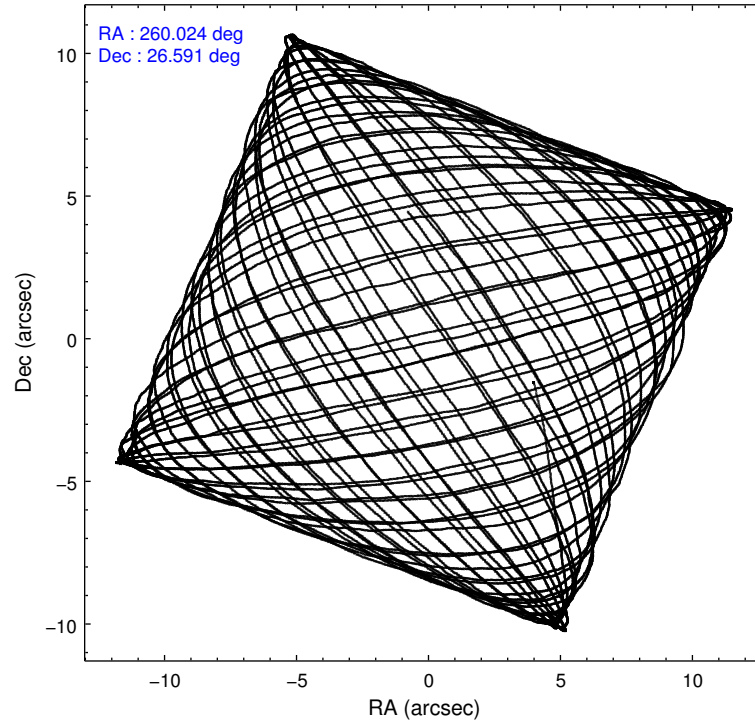
	ccd 0	ccd 1	ccd 2	ccd 3	ccd 6
level 1 events	121981	124713	147679	179143	134484
rejected events	106394	106691	121817	117222	118024
rejected %	87%	85%	82%	65%	87%

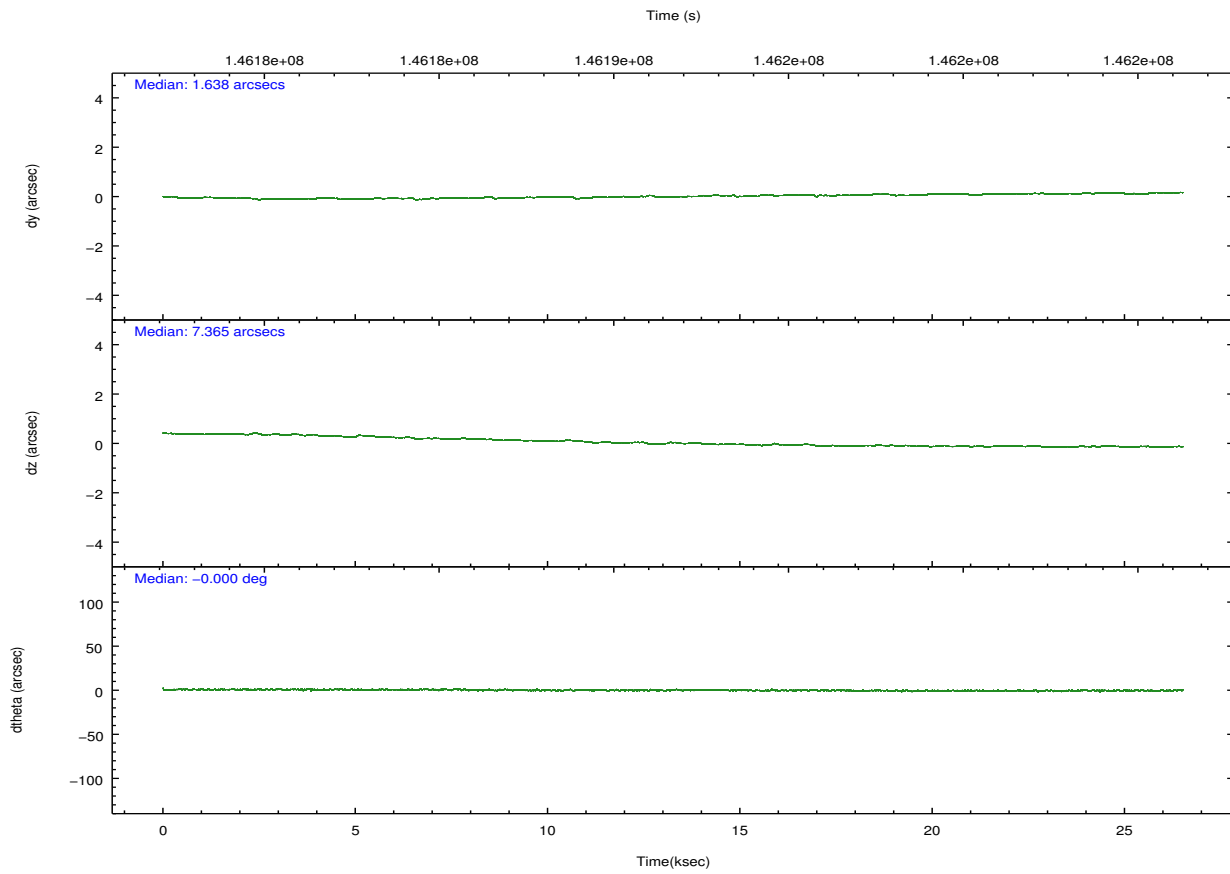
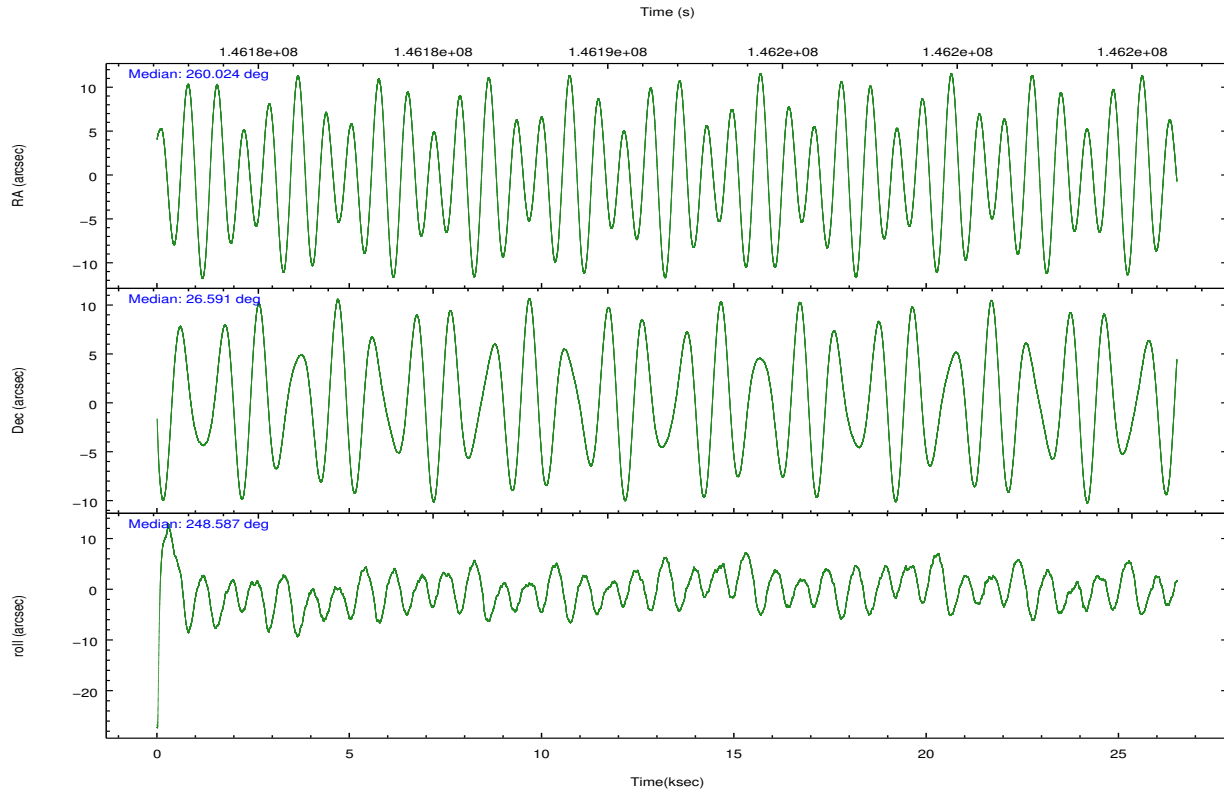
	ccd 0	ccd 1	ccd 2	ccd 3	ccd 6
grade 0 events	6441	7609	15495	45247	7138
	5%	6%	10%	25%	5%
grade 1 events	66	70	177	271	68
	0%	0%	0%	0%	0%
grade 2 events	3327	3627	4156	7300	3118
	2%	2%	2%	4%	2%
grade 3 events	1647	1823	1669	2901	1579
	1%	1%	1%	1%	1%
grade 4 events	1414	1754	1885	2860	1505
	1%	1%	1%	1%	1%
grade 5 events	4217	4531	4042	4909	4905
	3%	3%	2%	2%	3%
grade 6 events	2768	3224	2670	3640	3143
	2%	2%	1%	2%	2%
grade 7 events	102101	102075	117585	112015	113028
	83%	81%	79%	62%	84%

## 2.2 Compared Parameters

Parameter	Planned	Actual	Parameter	Planned	Actual
Instrument	ACIS	ACIS	Obspar format version number	7	7
Detector	ACIS-01236	ACIS-01236	Obspar file type	PREDICTED	ACTUAL
Grating	NONE	NONE	Obspar update status	NONE	UPDATED
Data mode	VFAINT	VFAINT	Number of optional ACIS chips dropped	0	0
Observation mode	POINTING	POINTING	On-chip summing requested	N	N
[deg] Pointing RA	260.019236	260.0239201864043	Subarray requested	NONE	NONE
[deg] Pointing Dec	26.617759	26.59065599474337	Alternating exposures requested	N	N
[deg] Pointing Roll	248.379878	248.586455468527	[s] Primary exposure time	0.000000	3.1
[mm] SIM focus pos	-0.782348	-0.7809083437167272			
[mm] SIM defocus	0	0.001439871863259334			
[mm] SIM translation stage pos	-227.592463	-227.5933067819097			
[mm] SIM translation stage offset	-6	-5.999146221020027			
[s] Observation start time (MET)	146179062.184000	146177883.93614			
Observation start date	2002-08-19T21:16:38	2002-08-19T20:58:03			
[s] Observation end time (MET)	146204951.184000	146205266.29977			
Observation end date	2002-08-20T04:28:07	2002-08-20T04:34:26			
Read mode	TIMED	TIMED			

## 2.3 Aspect



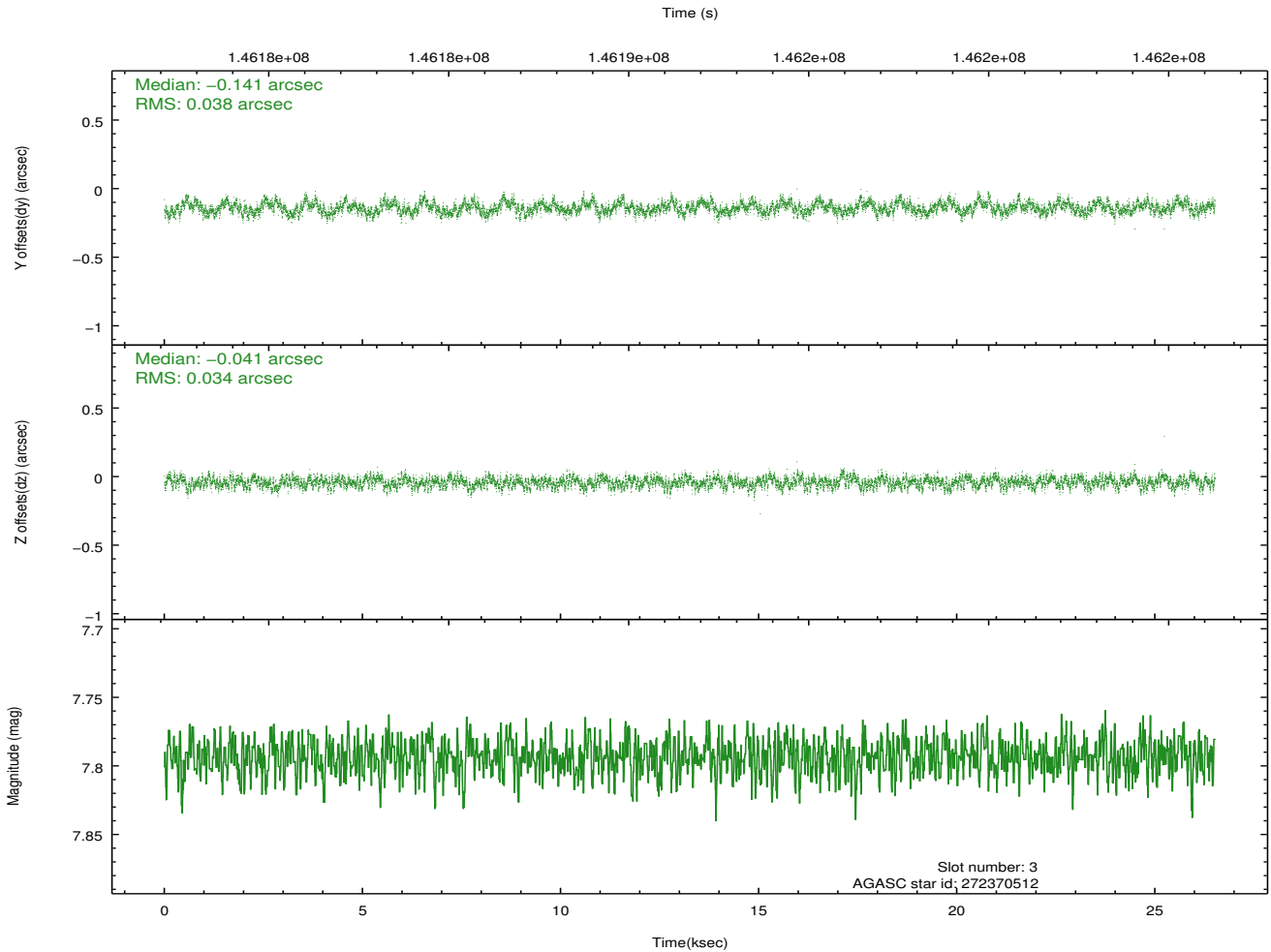
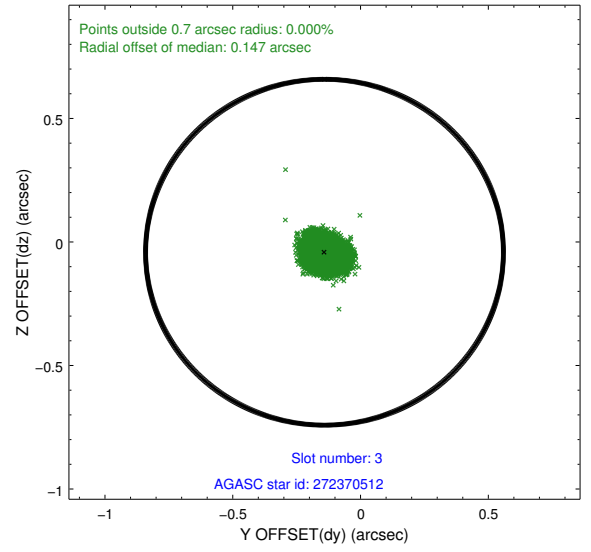
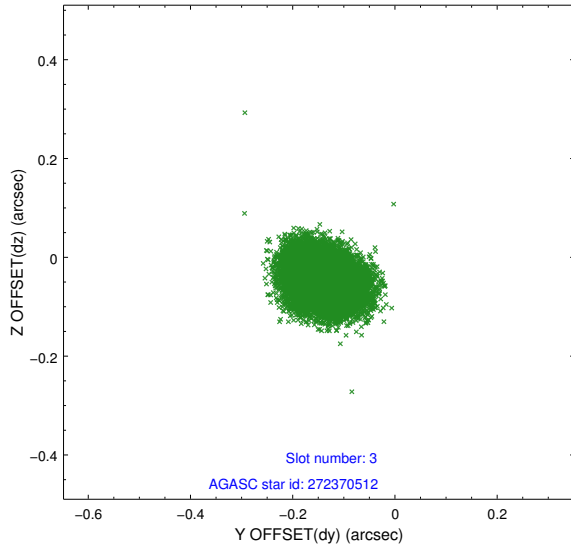


### Slot Statistics

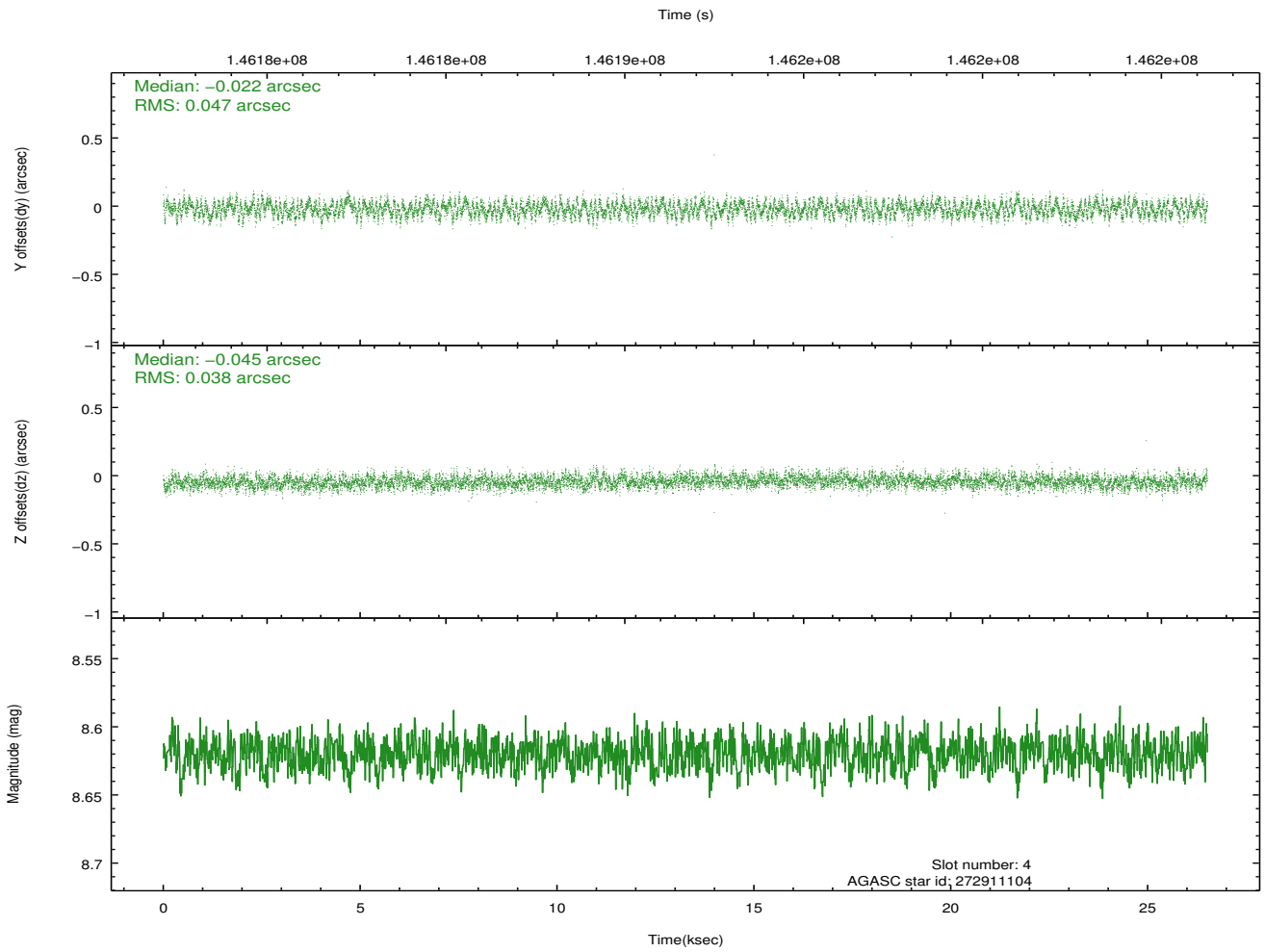
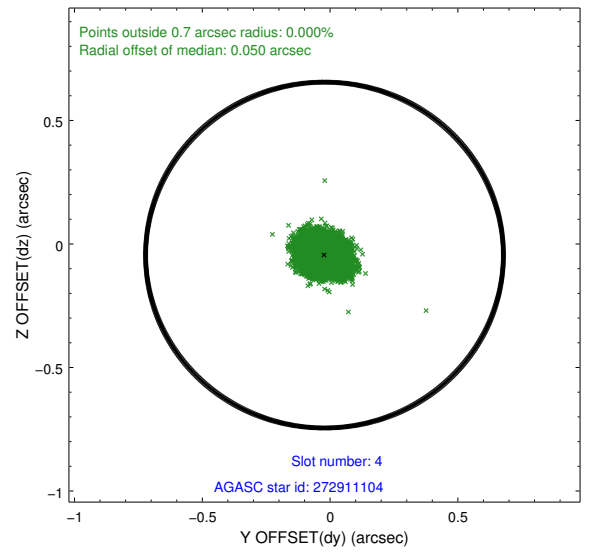
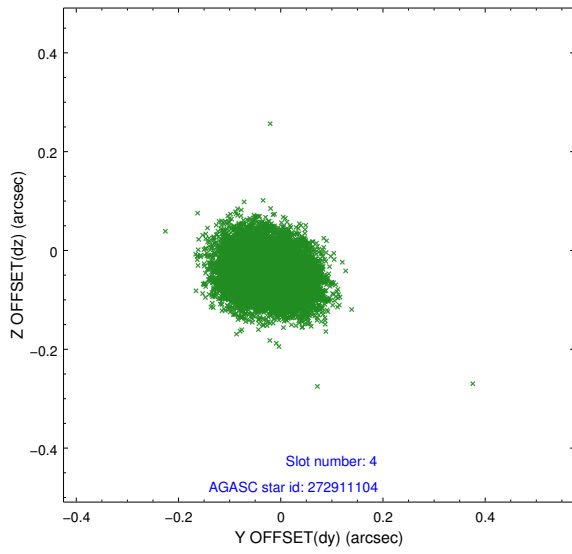
slot	status	id	mag	n_pts	med_dy	med_dz	dr1	dr2	ra	dec	mean_y	mean_z
0	FID	ACIS-I-1	7.24	6467	0.065	-0.048	0.007	0.012	0.000000	0.000000	938.10	-954.04
1	FID	ACIS-I-5	7.23	6467	-0.142	0.084	0.007	0.012	0.000000	0.000000	-1810.10	943.59
2	FID	ACIS-I-6	7.25	6467	-0.015	0.035	0.008	0.015	0.000000	0.000000	403.53	1588.10
3	GUIDE	272370512	7.79	12934	-0.141	-0.041	0.055	0.087	260.336971	25.971611	1782.46	1812.79
4	GUIDE	272911104	8.62	12929	-0.022	-0.045	0.065	0.101	260.699049	26.523786	-497.48	2158.48
5	GUIDE	272371856	9.11	12929	0.088	0.063	0.077	0.128	260.405183	26.037878	1479.33	1929.58
6	GUIDE	272905040	9.11	12929	-0.098	0.051	0.084	0.143	260.363769	26.943354	-1498.16	595.68
7	GUIDE	272370688	9.38	12927	0.176	-0.027	0.072	0.118	260.078386	26.214743	1278.55	712.38

## 2.4 Star Slots

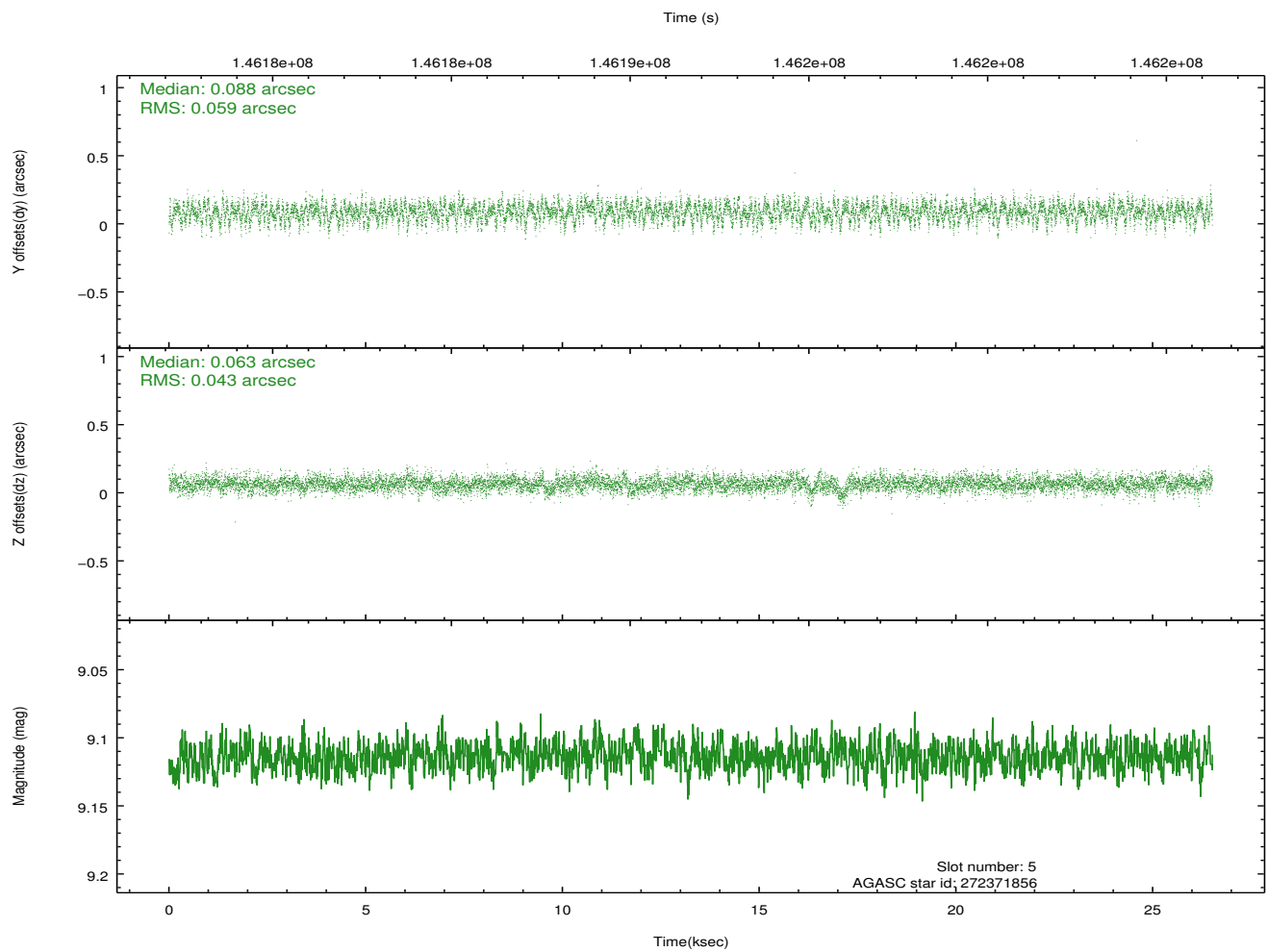
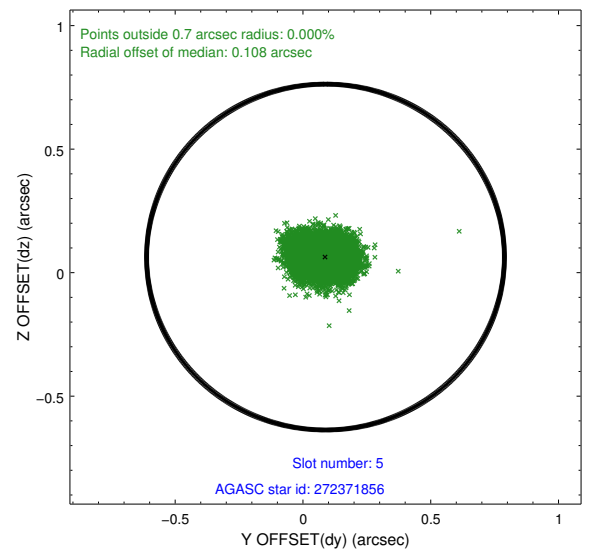
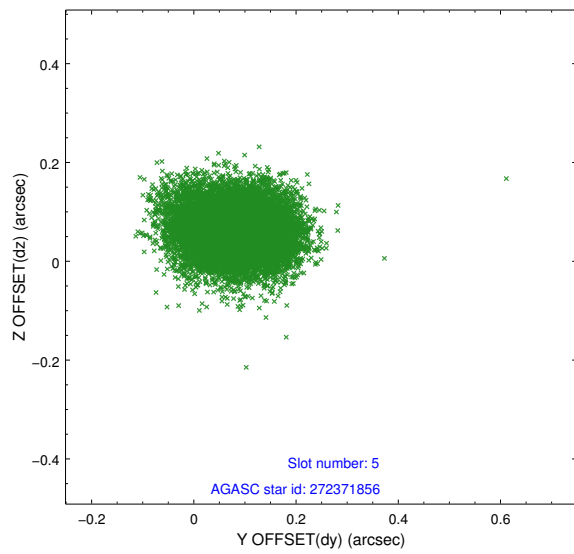
### 2.4.1 Slot 3



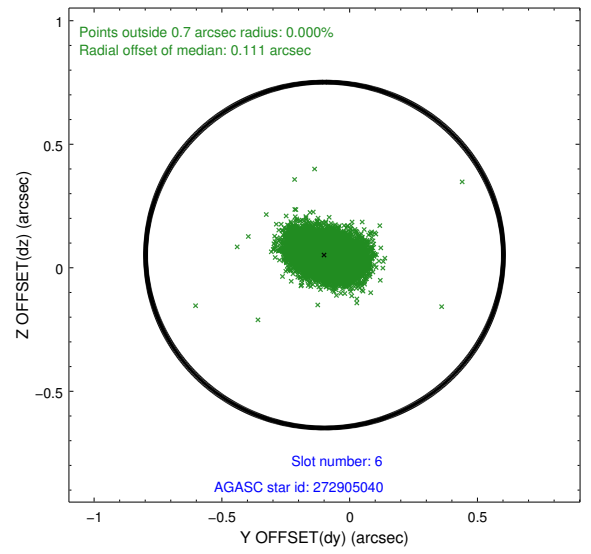
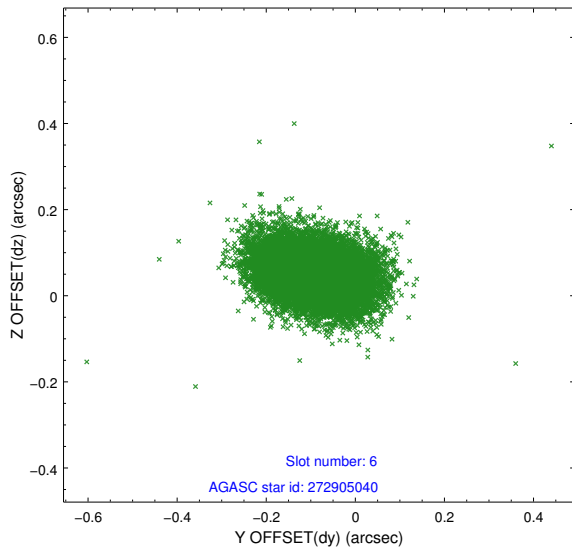
## 2.4.2 Slot 4



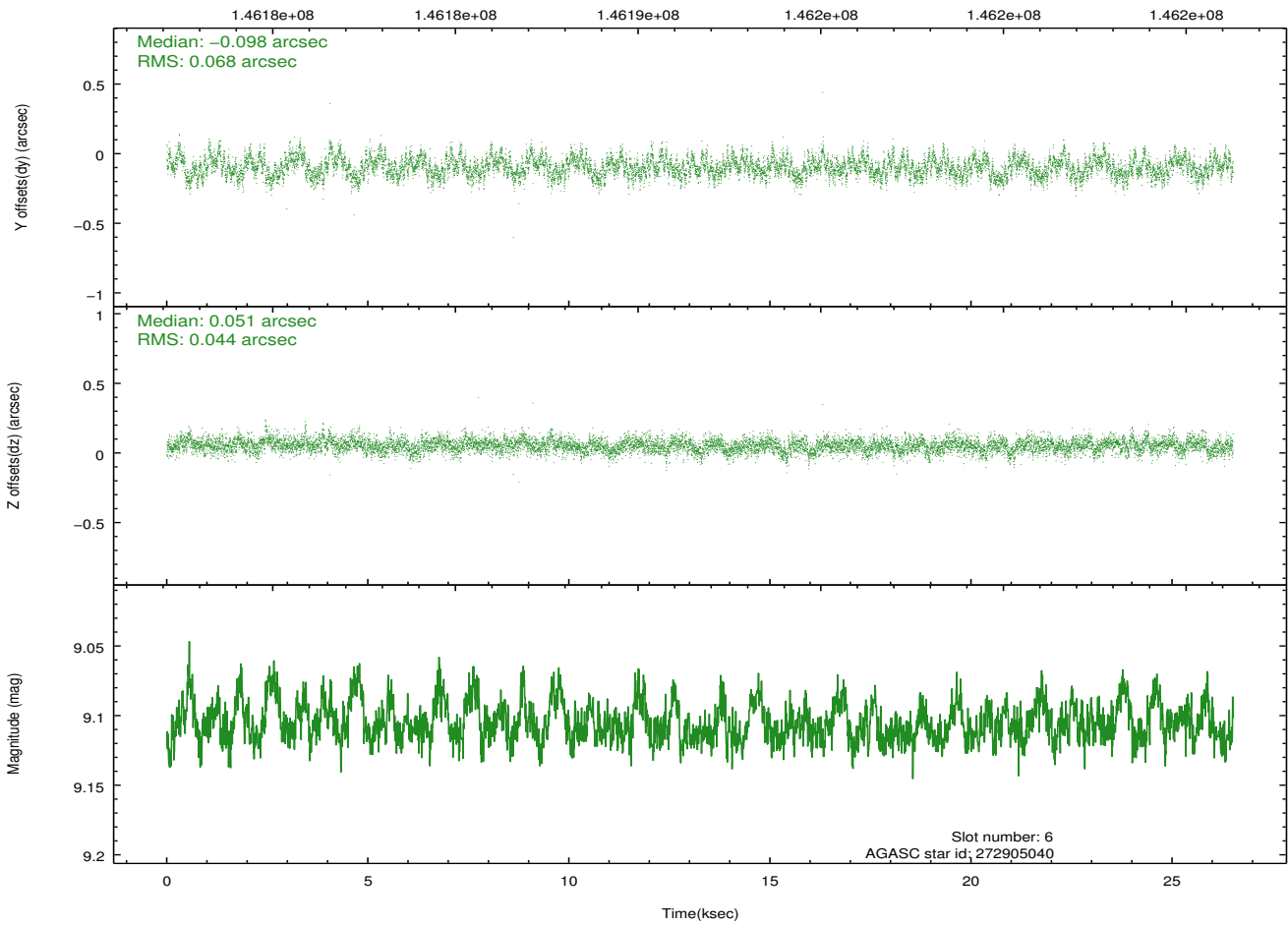
### 2.4.3 Slot 5



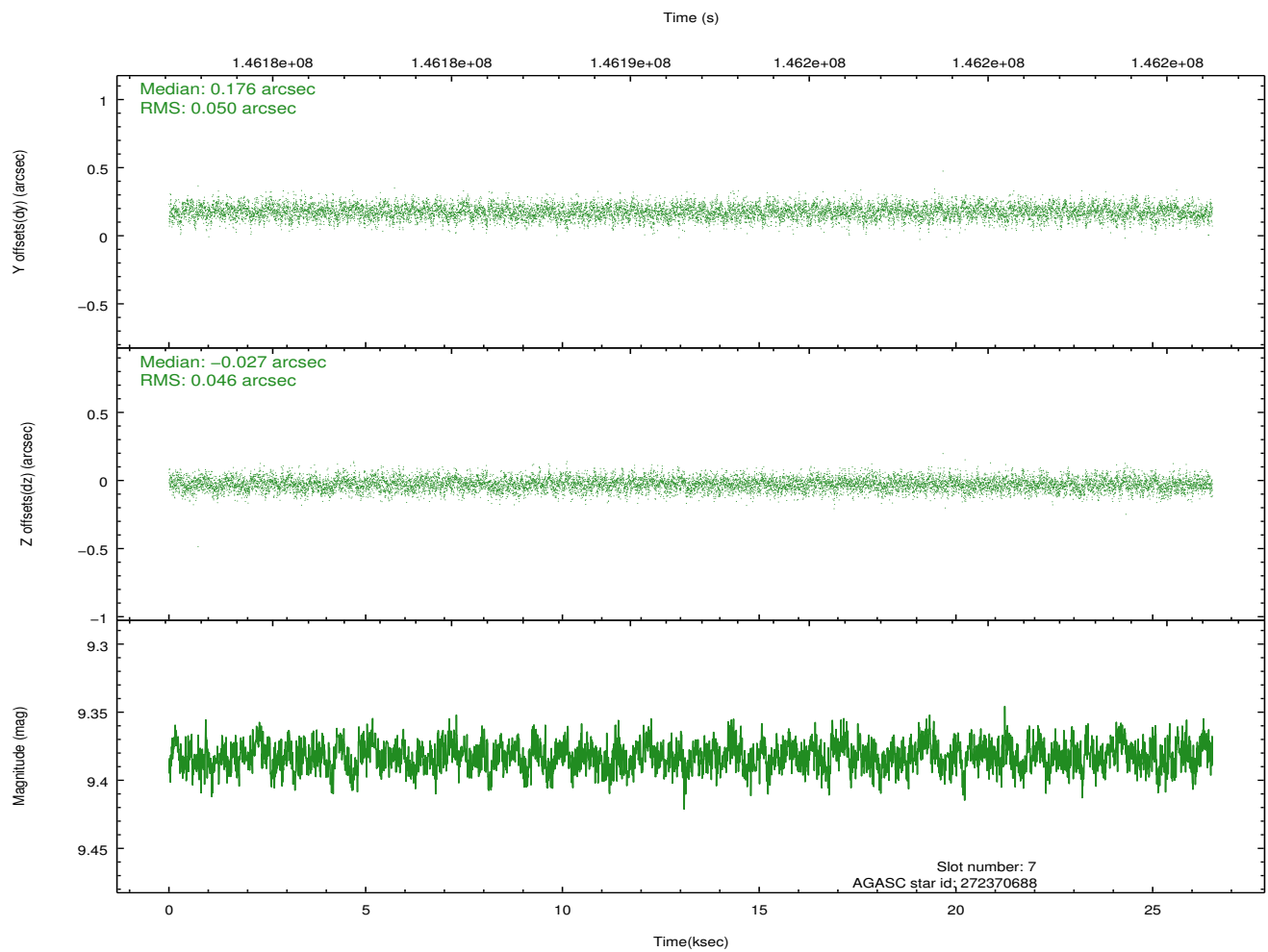
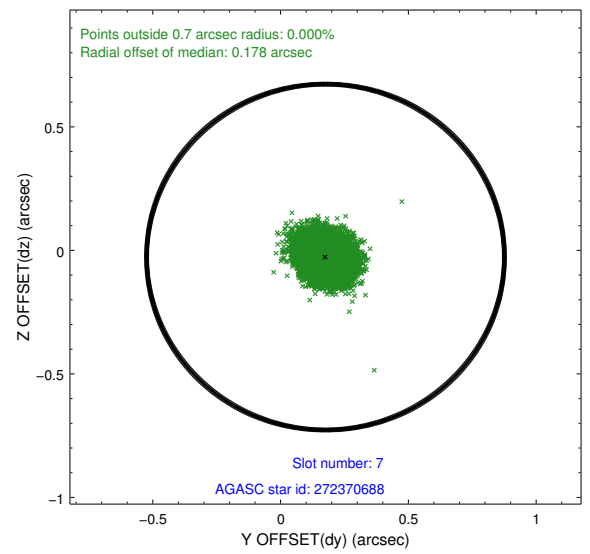
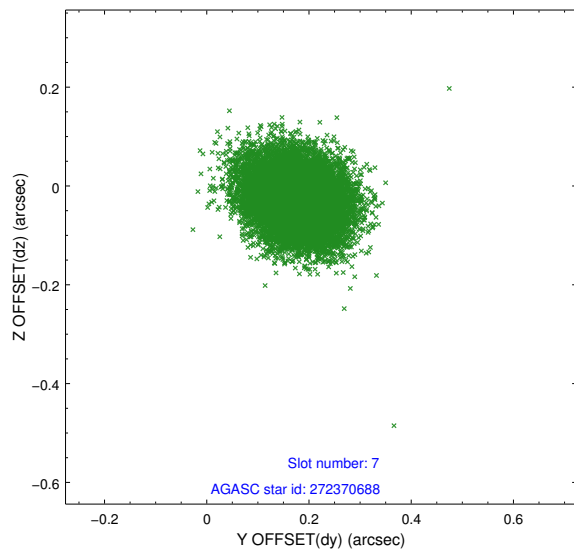
### 2.4.4 Slot 6



Time (s)

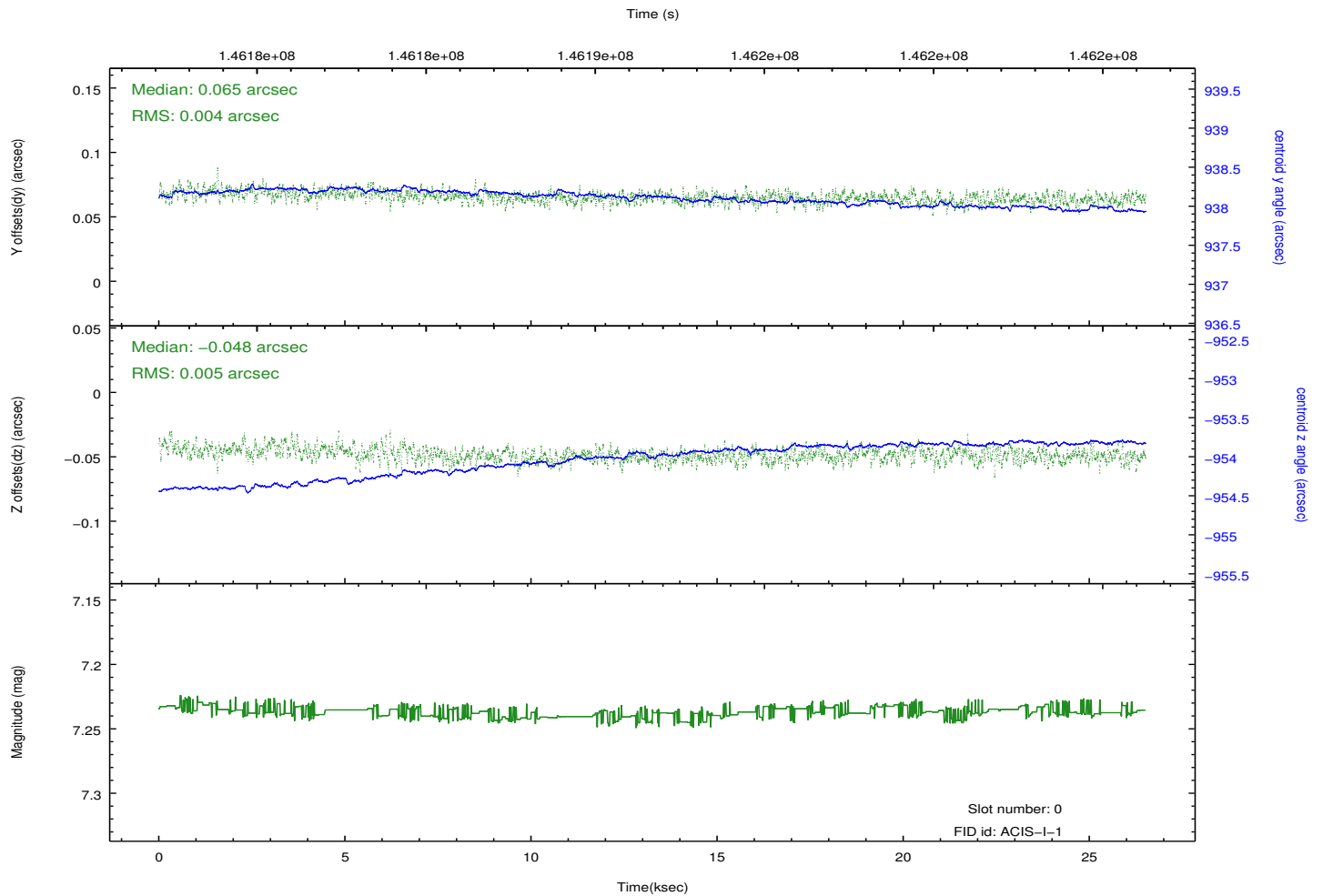
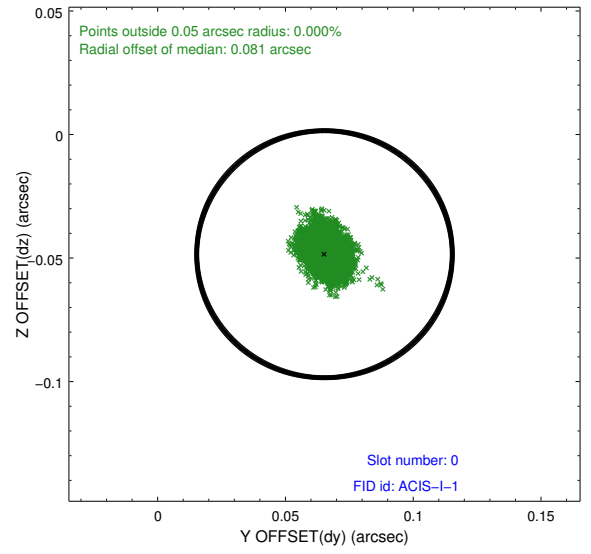
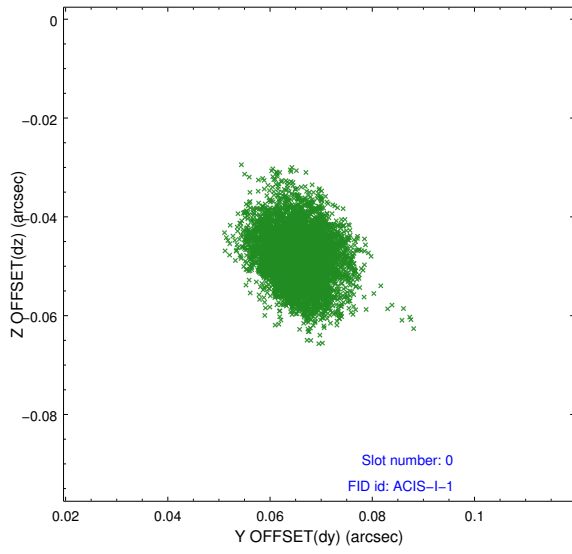


## 2.4.5 Slot 7

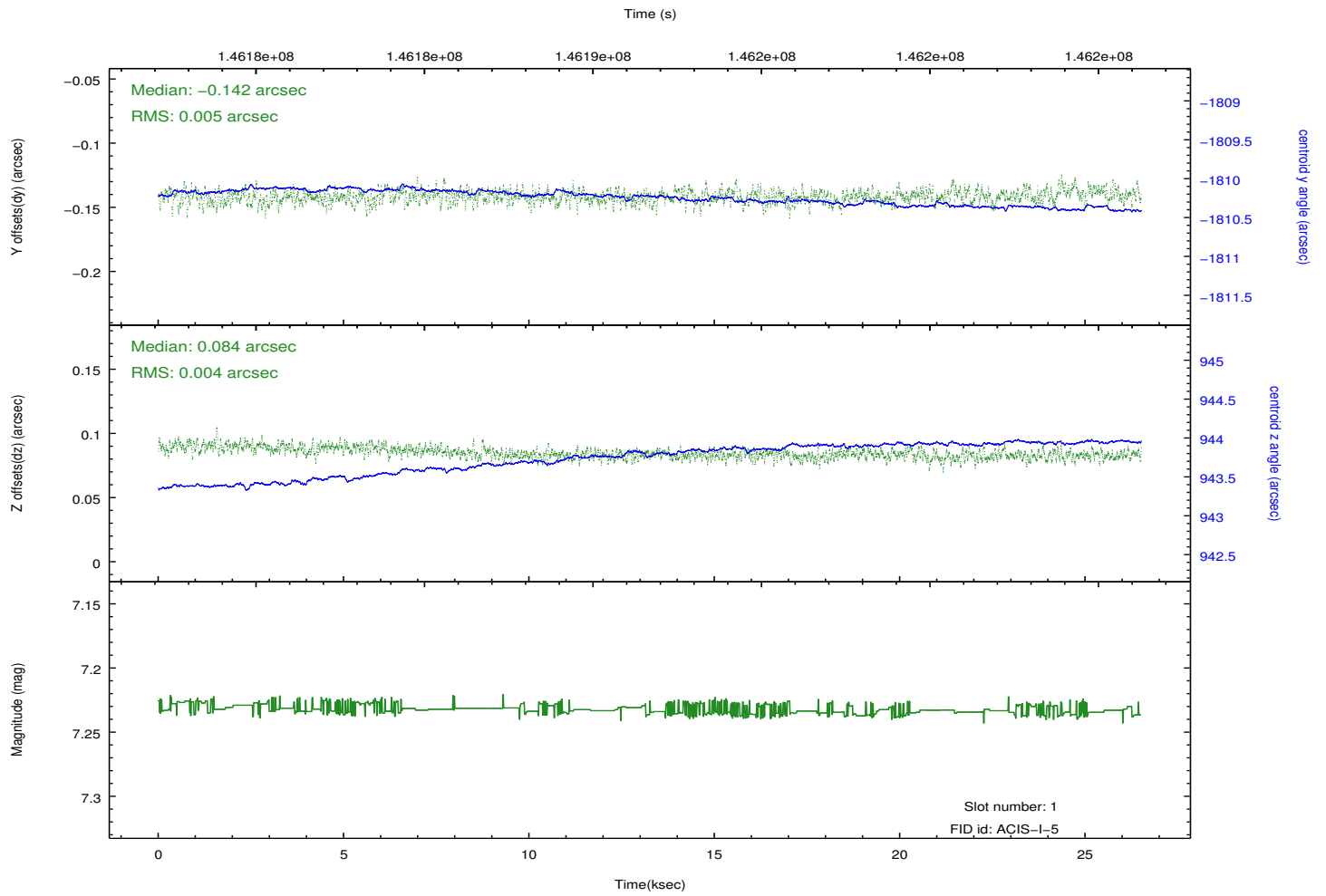
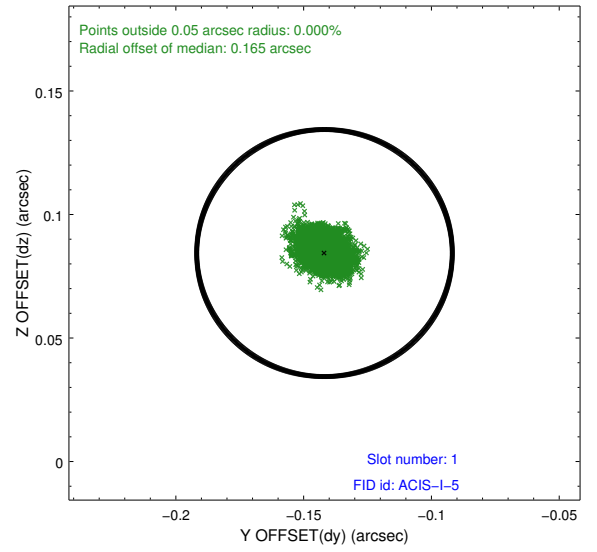
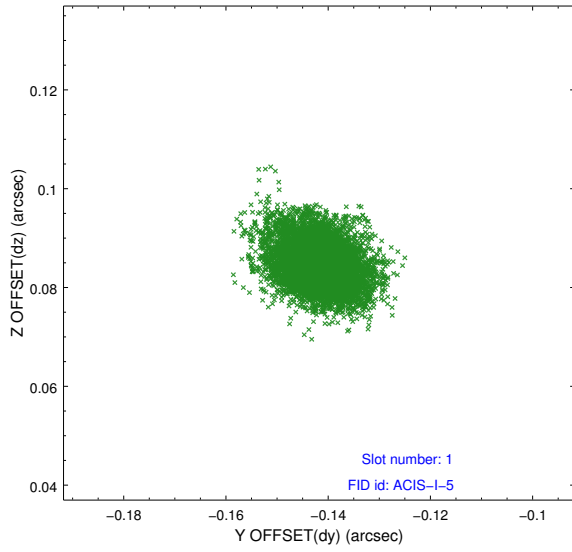


## 2.5 FID Slots

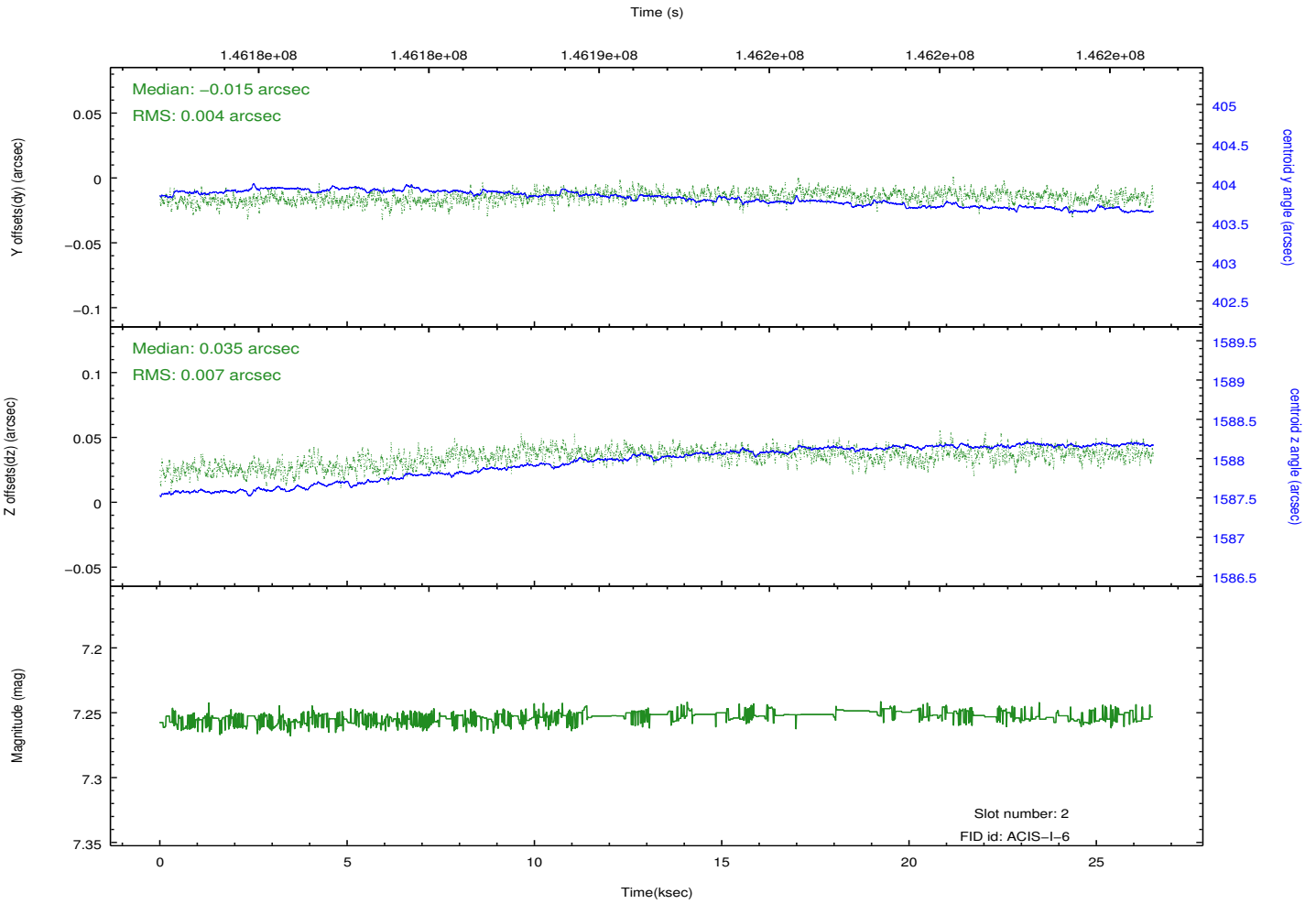
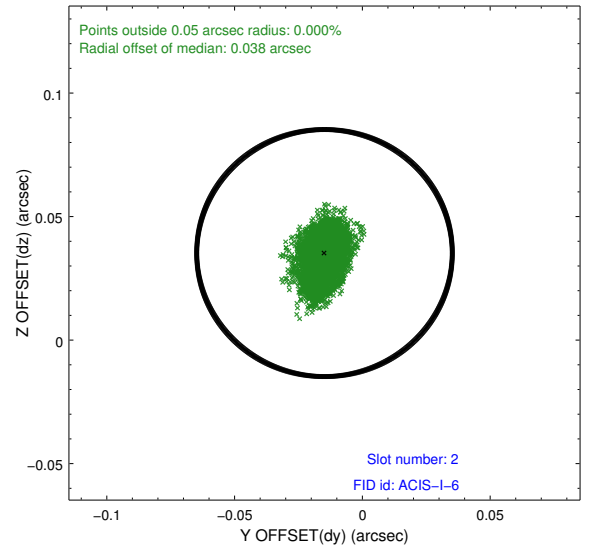
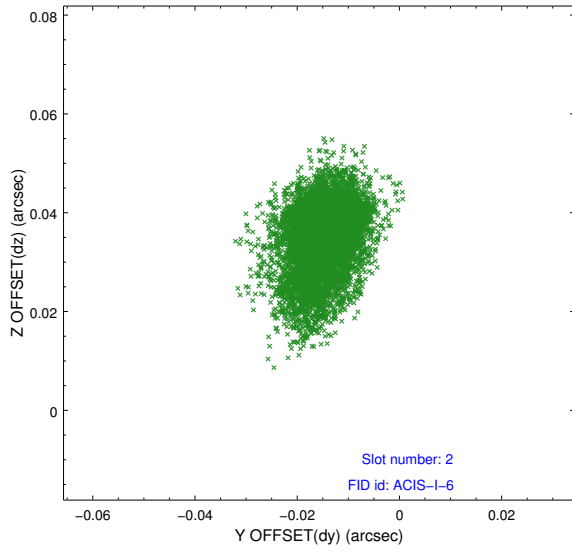
### 2.5.1 Slot 0



## 2.5.2 Slot 1



### 2.5.3 Slot 2



# A Summary

## A.1 Status

V&V Scientist	Jen Lauer
V&V Date (YYYY-MM-DD)	2012.10.23
V&V Edition	1
V&V Disposition and Status	OK
V&V Charge Time	26.008

## A.2 Comments