

# V&V Reference Report

## L2 ASCDS Version : 8.4.5

Observation 4371 - L2 Version 3  
Chandra X-Ray Center

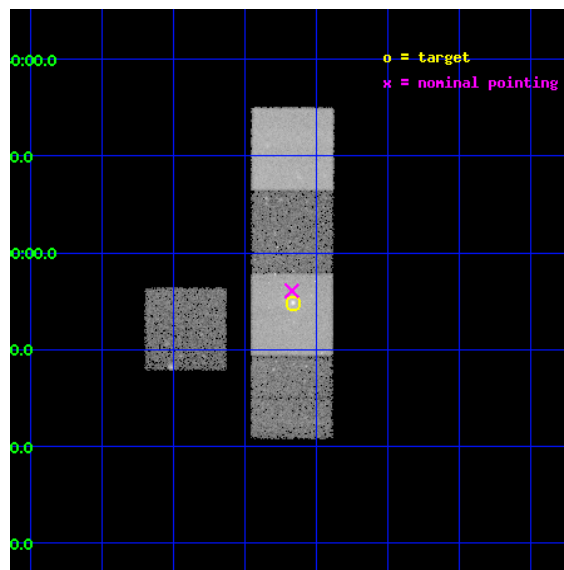
L2 Processing Date : Oct 14 2012

## Contents

<b>1</b>	<b>Front</b>	<b>2</b>
<b>2</b>	<b>OBI</b>	<b>3</b>
2.1	OBI . . . . .	3
2.1.1	Images . . . . .	3
2.1.2	Bias . . . . .	3
2.1.3	Parameters . . . . .	4
2.1.4	Events . . . . .	4
2.2	Compared Parameters . . . . .	5
2.3	Aspect . . . . .	6
2.4	Star Slots . . . . .	9
2.4.1	Slot 3 . . . . .	9
2.4.2	Slot 4 . . . . .	10
2.4.3	Slot 5 . . . . .	11
2.4.4	Slot 6 . . . . .	12
2.4.5	Slot 7 . . . . .	13
2.5	FID Slots . . . . .	14
2.5.1	Slot 0 . . . . .	14
2.5.2	Slot 1 . . . . .	15
2.5.3	Slot 2 . . . . .	16
<b>A</b>	<b>Summary</b>	<b>17</b>
A.1	Status . . . . .	17
A.2	Comments . . . . .	17

# 1 Front

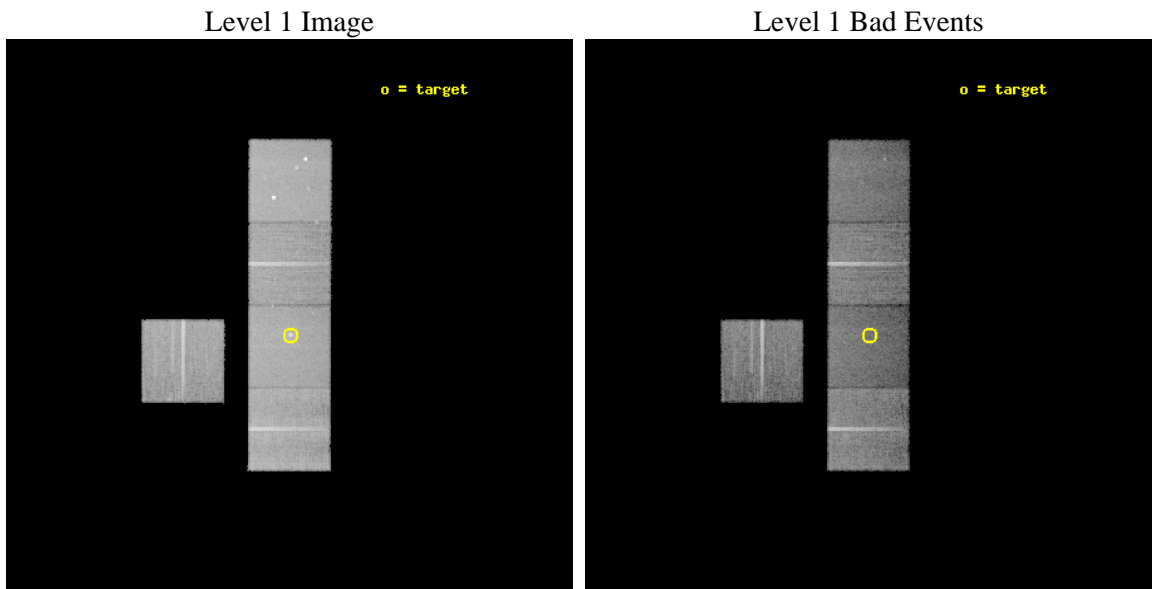
seq_num	600218	Sequence number
obs_id	4371	Observation id
title	STELLAR MASS LOSS VERSUS EXTERNAL ACCRETION IN X-RAY BRIGHT ELLIPTICALS	Proposal title
observer	Dr. CRAIG SARAZIN	Principal investigator
object	NGC1600	Source name
dtcycle	0	&#160
cycle	P	events from which exps? Prim/Second/Both
ra_targ	67.91625	Observer's specified target RA [deg]
dec_targ	-5.086139	Observer's specified target Dec [deg]
ra_nom	67.917940310263	Nominal RA [deg]
dec_nom	-5.0654281514371	Nominal Dec [deg]
roll_nom	90.156776871535	Nominal Roll [deg]
revision	3	Processing version of data
ontime	27103.299947858	Sum of GTIs [s]
livetime	26749.17538088	Livetime [s]
ontime3	27093.877037138	Sum of GTIs [s]
ontime5	27103.299947858	Sum of GTIs [s]
ontime6	27103.299947858	Sum of GTIs [s]
ontime7	27103.299947858	Sum of GTIs [s]
ontime8	27097.018007427	Sum of GTIs [s]
l2events	209355	Number of level 2 events



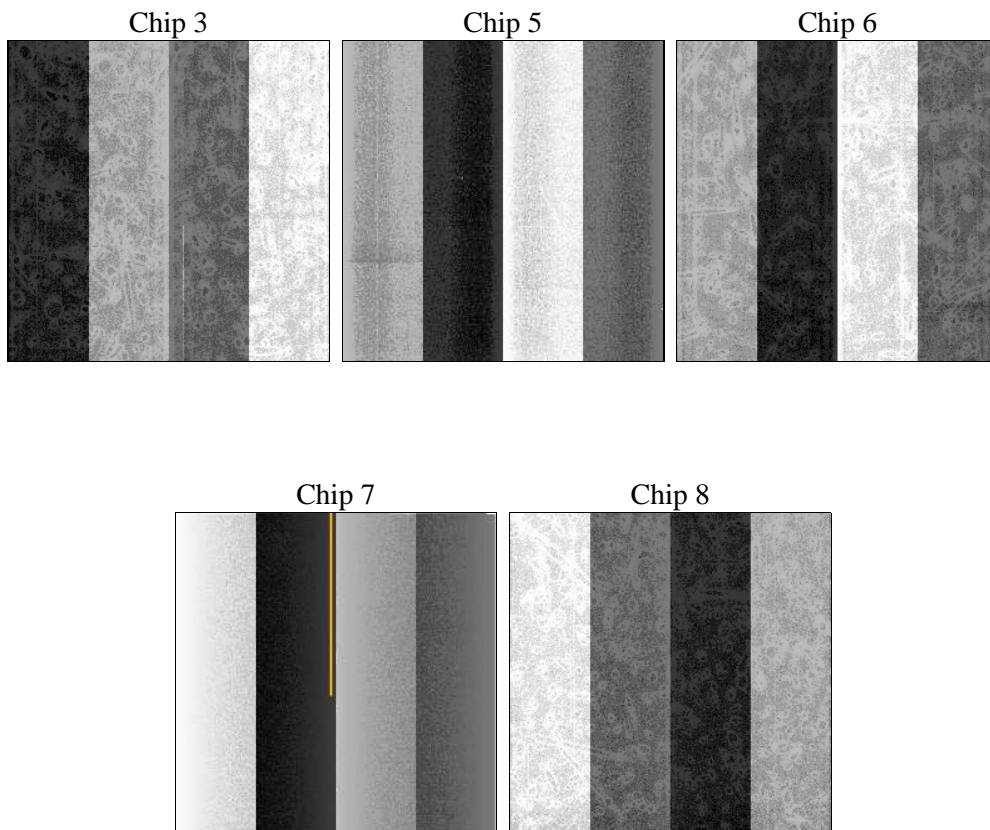
## 2 OBI

### 2.1 OBI

#### 2.1.1 Images



#### 2.1.2 Bias



### 2.1.3 Parameters

obi_num	0	Obi number	sched_exp_time	27000.000000	[s] Scheduled observation exposure time
ascdsver	8.4.5	Processing system revision	ontime	27103.299947858	Sum of GTIs [s]
caldbver	4.5.2	&#160	ontime3	27093.877037138	Sum of GTIs [s]
date	2012-10-14T19:29:12	Date and time of file creation	ontime5	27103.299947858	Sum of GTIs [s]
revision	3	Processing version of data	ontime6	27103.299947858	Sum of GTIs [s]
			ontime7	27103.299947858	Sum of GTIs [s]
			ontime8	27097.018007427	Sum of GTIs [s]
			l1events	818161	Number of level 1 events

### 2.1.4 Events

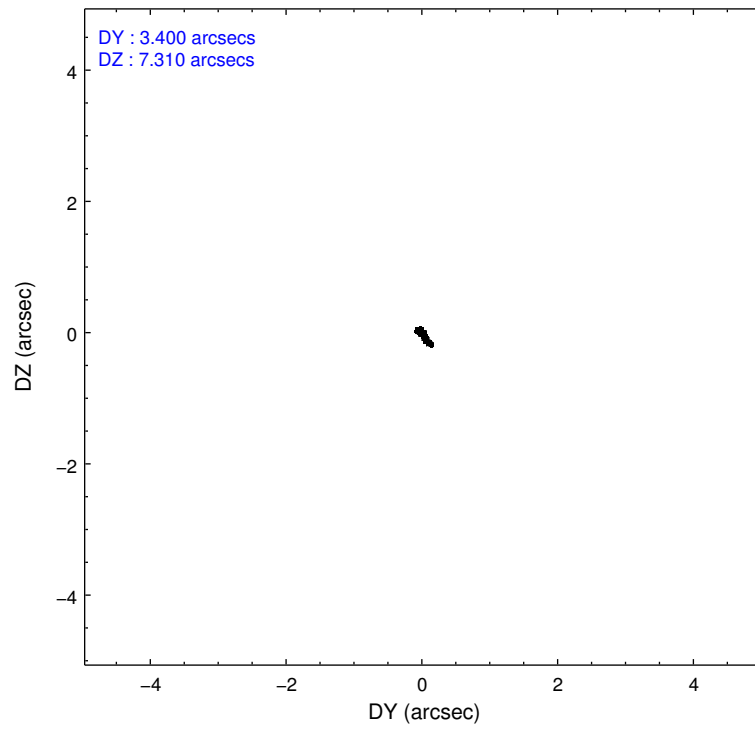
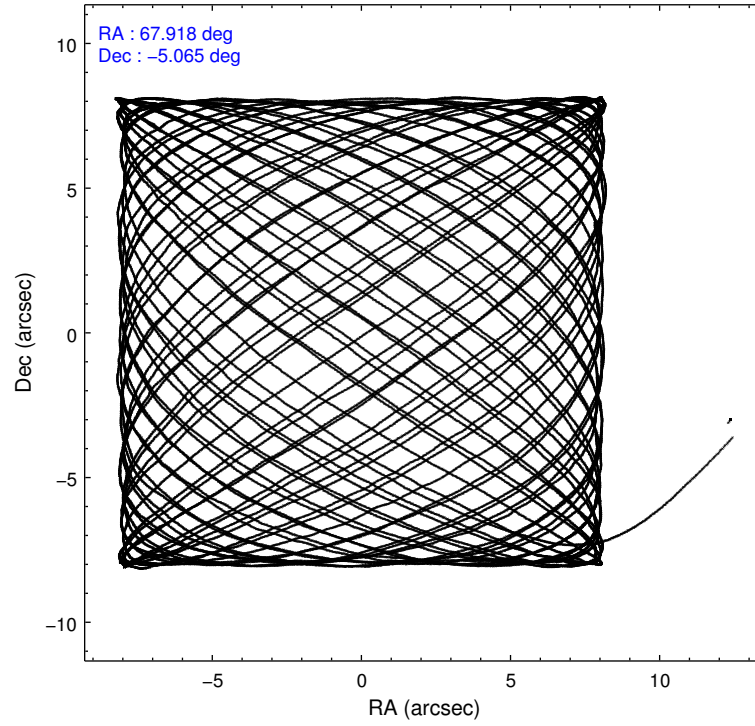
	ccd 3	ccd 5	ccd 6	ccd 7	ccd 8
level 1 events	140340	191189	145364	163122	178146
rejected events	126706	93731	128223	83308	138145
rejected %	90%	49%	88%	51%	77%

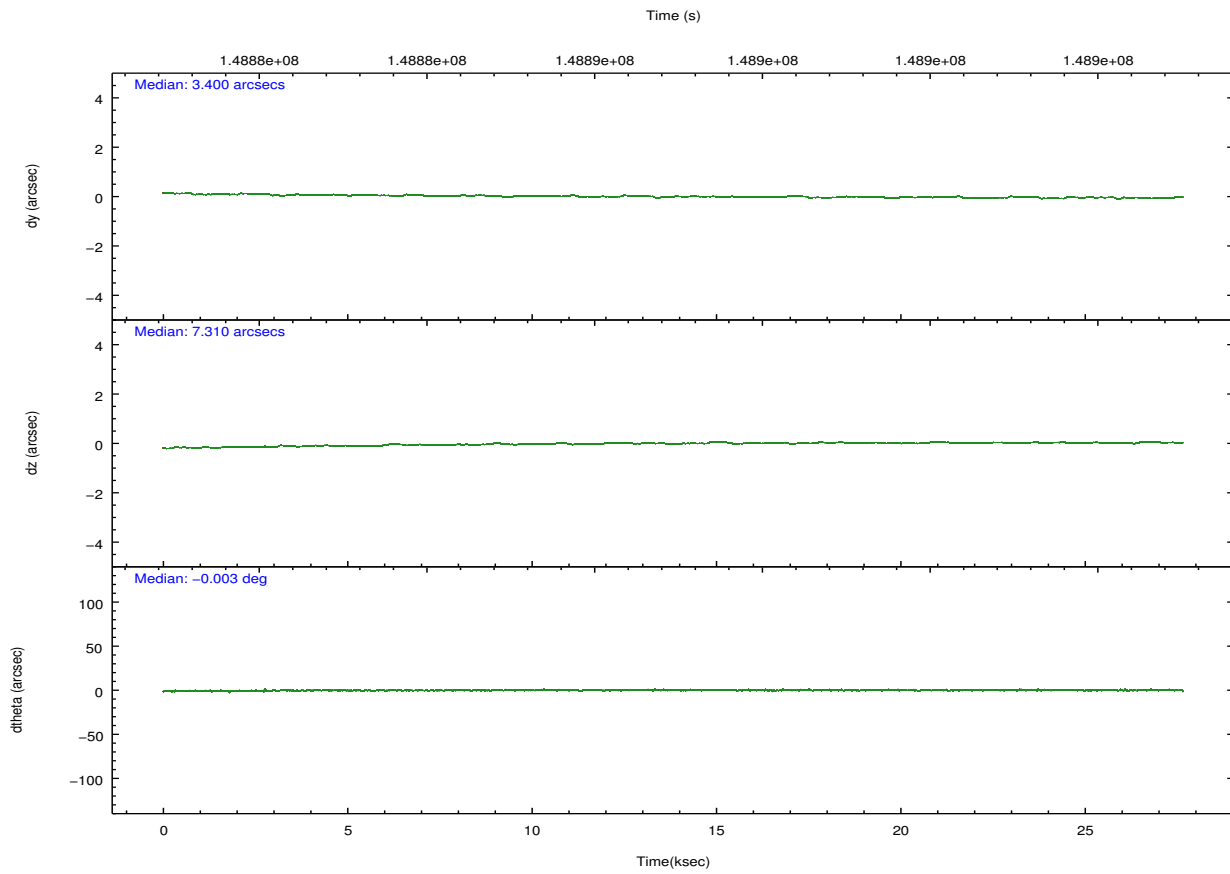
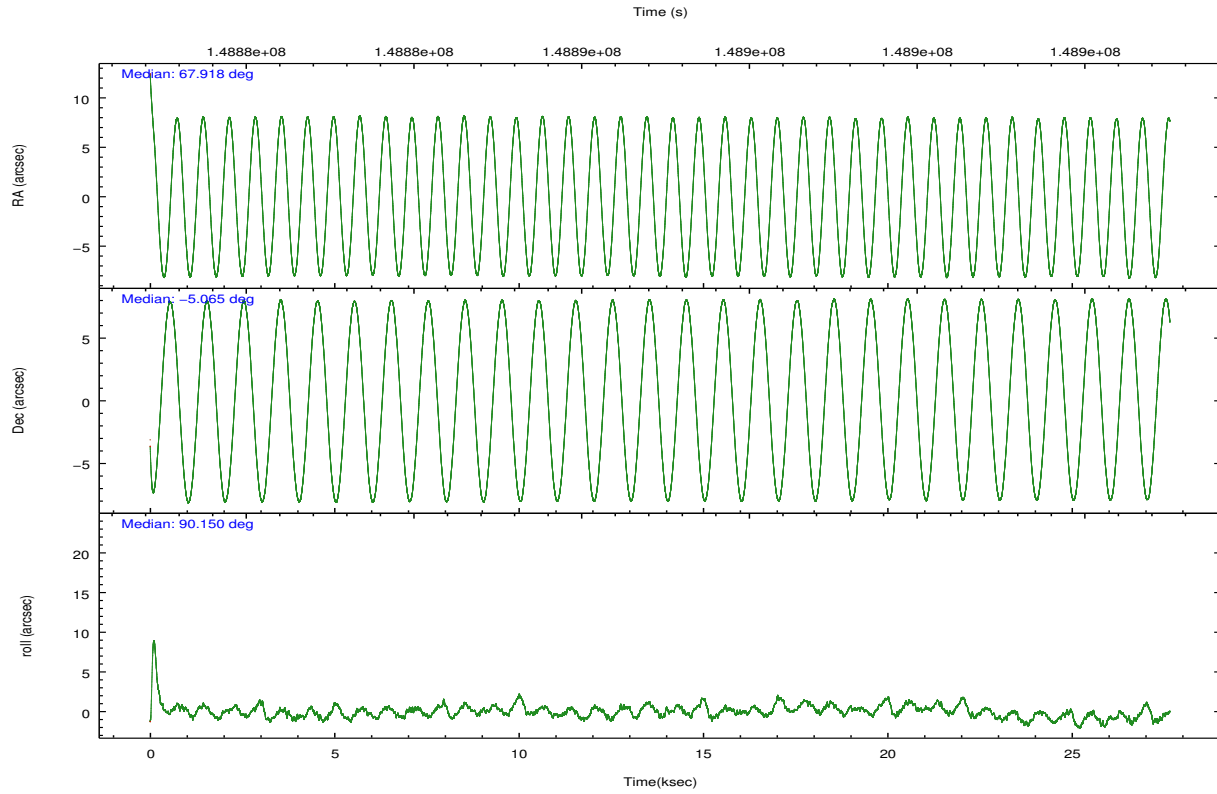
	ccd 3	ccd 5	ccd 6	ccd 7	ccd 8
grade 0 events	5239	13743	7444	10046	12932
	3%	7%	5%	6%	7%
grade 1 events	73	387	73	132	94
	0%	0%	0%	0%	0%
grade 2 events	2724	27477	3167	16562	8572
	1%	14%	2%	10%	4%
grade 3 events	1623	4557	1722	8064	4316
	1%	2%	1%	4%	2%
grade 4 events	1469	4471	1676	7822	3965
	1%	2%	1%	4%	2%
grade 5 events	5232	15350	5557	16467	7563
	3%	8%	3%	10%	4%
grade 6 events	2581	47234	3138	37341	10225
	1%	24%	2%	22%	5%
grade 7 events	121399	77970	122587	66688	130479
	86%	40%	84%	40%	73%

## 2.2 Compared Parameters

Parameter	Planned	Actual	Parameter	Planned	Actual
Instrument	ACIS	ACIS	Obspar format version number	7	7
Detector	ACIS-35678	ACIS-35678	Obspar file type	PREDICTED	ACTUAL
Grating	NONE	NONE	Obspar update status	NONE	UPDATED
Data mode	VFAINT	VFAINT	Number of optional ACIS chips dropped	0	0
Observation mode	POINTING	POINTING	On-chip summing requested	N	N
[deg] Pointing RA	67.931978	67.91794031026279	Subarray requested	NONE	NONE
[deg] Pointing Dec	-5.088804	-5.065428151437055	Alternating exposures requested	N	N
[deg] Pointing Roll	90.001395	90.15677687153503	[s] Primary exposure time	0.000000	3.1
[mm] SIM focus pos	-0.684267	-0.6828225247311905			
[mm] SIM defocus	0	0.001444936568705701			
[mm] SIM translation stage pos	-190.132523	-190.1400660498719			
[mm] SIM translation stage offset	0	0.00754346686406393			
[s] Observation start time (MET)	148879161.184000	148877964.16011			
Observation start date	2002-09-20T03:18:17	2002-09-20T02:59:24			
[s] Observation end time (MET)	148906161.184000	148907076.21131			
Observation end date	2002-09-20T10:48:17	2002-09-20T11:04:36			
Read mode	TIMED	TIMED			

## 2.3 Aspect



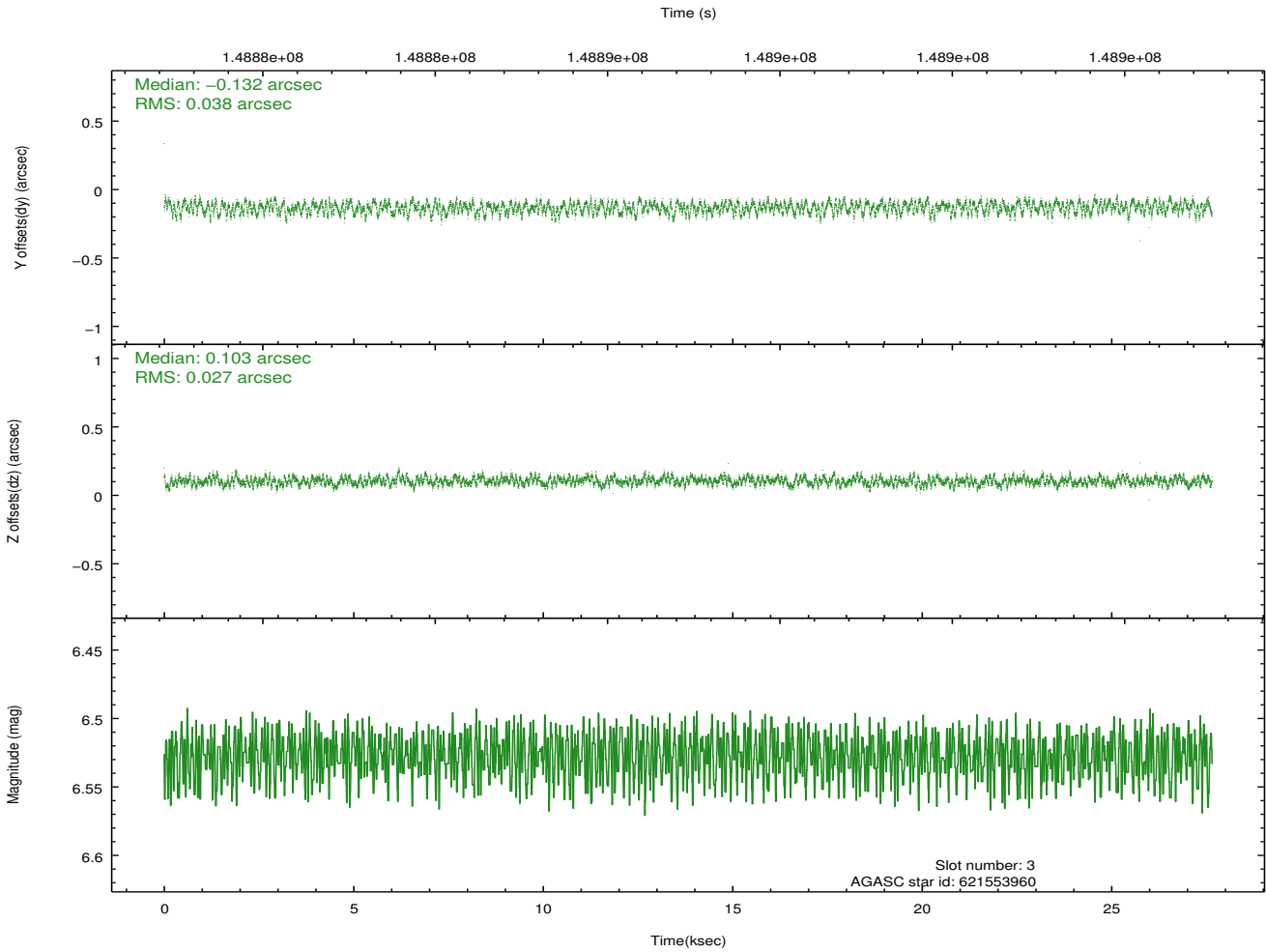
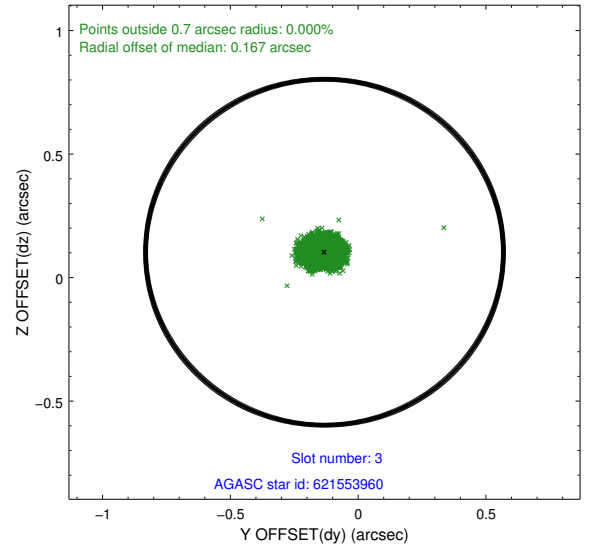
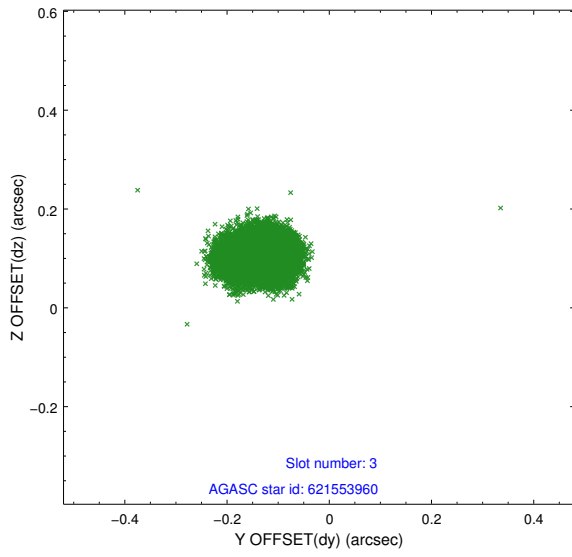


### Slot Statistics

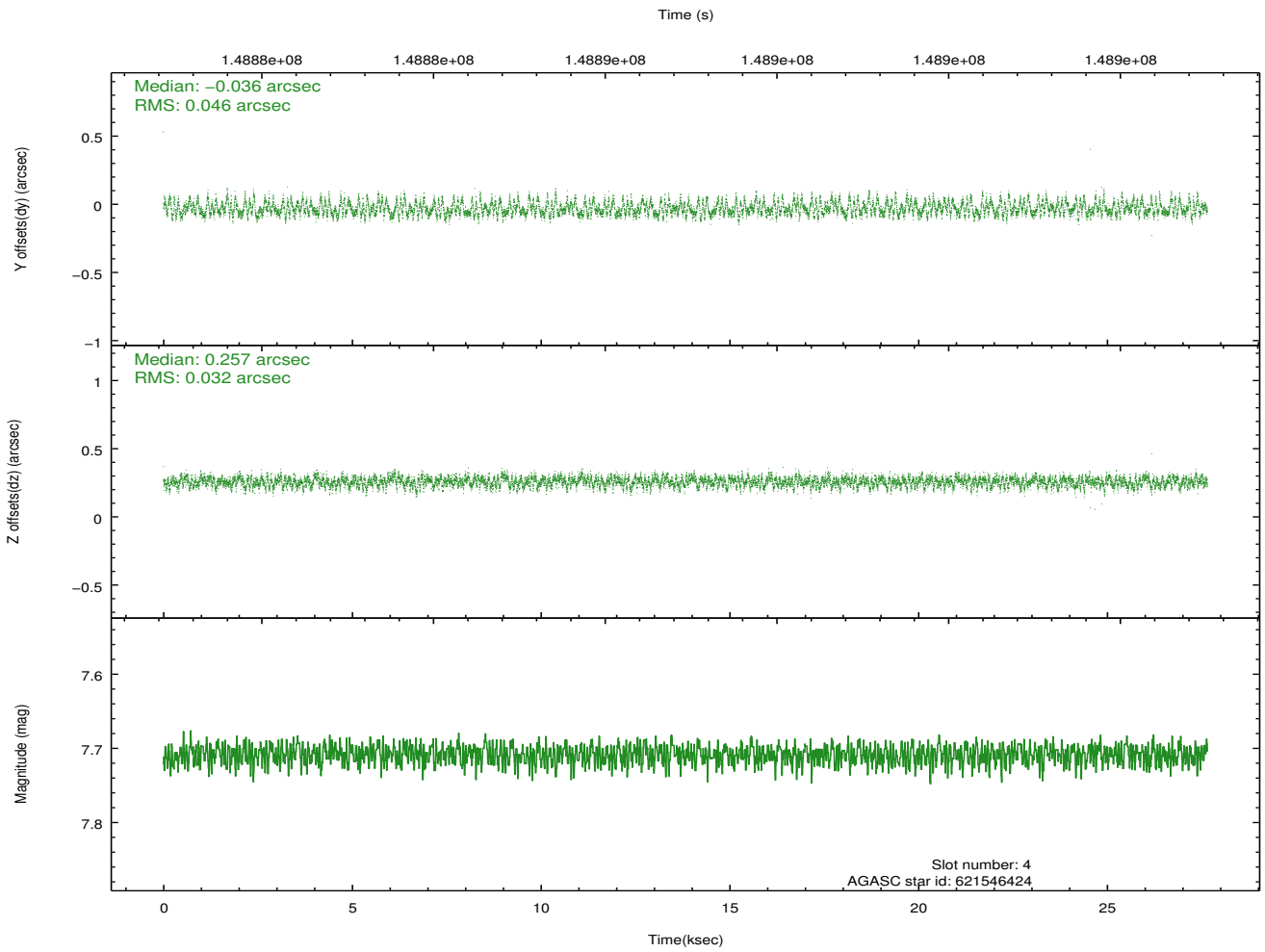
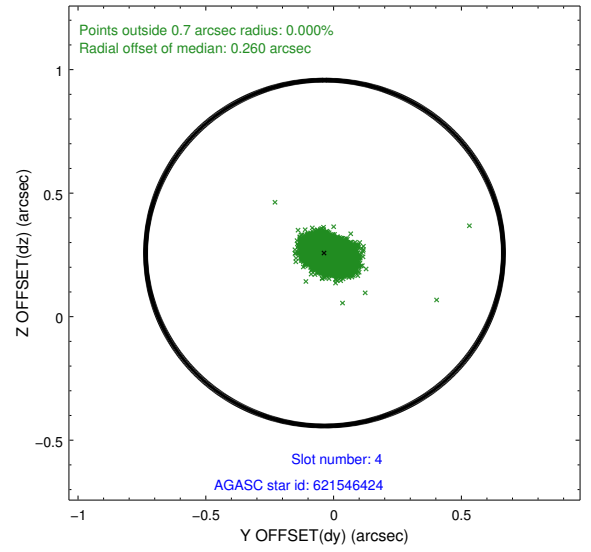
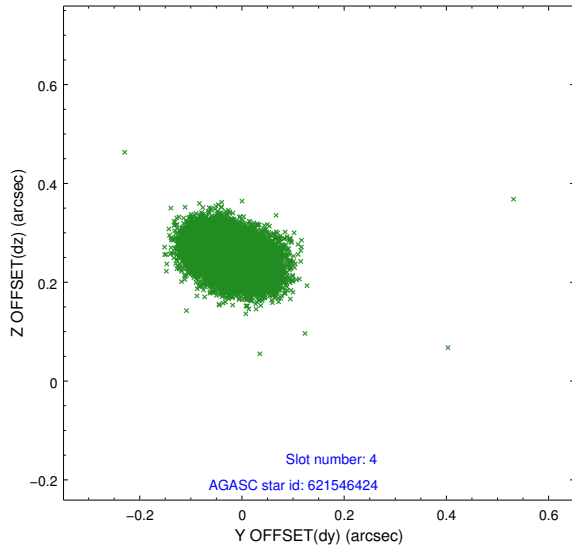
slot	status	id	mag	n_pts	med_dy	med_dz	dr1	dr2	ra	dec	mean_y	mean_z
0	FID	ACIS-S-3	7.35	6746	-0.091	-0.071	0.007	0.012	0.000000	0.000000	57.01	-1857.59
1	FID	ACIS-S-4	7.20	6746	0.052	0.082	0.006	0.011	0.000000	0.000000	2157.35	179.95
2	FID	ACIS-S-5	7.24	6744	0.011	-0.000	0.006	0.012	0.000000	0.000000	-1808.77	173.75
3	GUIDE	621553960	6.53	13491	-0.132	0.103	0.050	0.076	68.435033	-5.309670	-795.94	-1802.57
4	GUIDE	621546424	7.71	13490	-0.036	0.257	0.059	0.098	68.622214	-5.138021	-178.60	-2474.10
5	GUIDE	619986032	7.90	13489	-0.176	-0.244	0.050	0.080	67.431542	-4.597237	1768.54	1796.22
6	GUIDE	621544064	8.50	13487	0.078	0.179	0.070	0.117	68.548522	-4.557927	1910.50	-2211.51
7	GUIDE	620375512	8.89	13480	0.266	-0.294	0.085	0.138	67.329905	-5.680923	-2133.15	2156.86

## 2.4 Star Slots

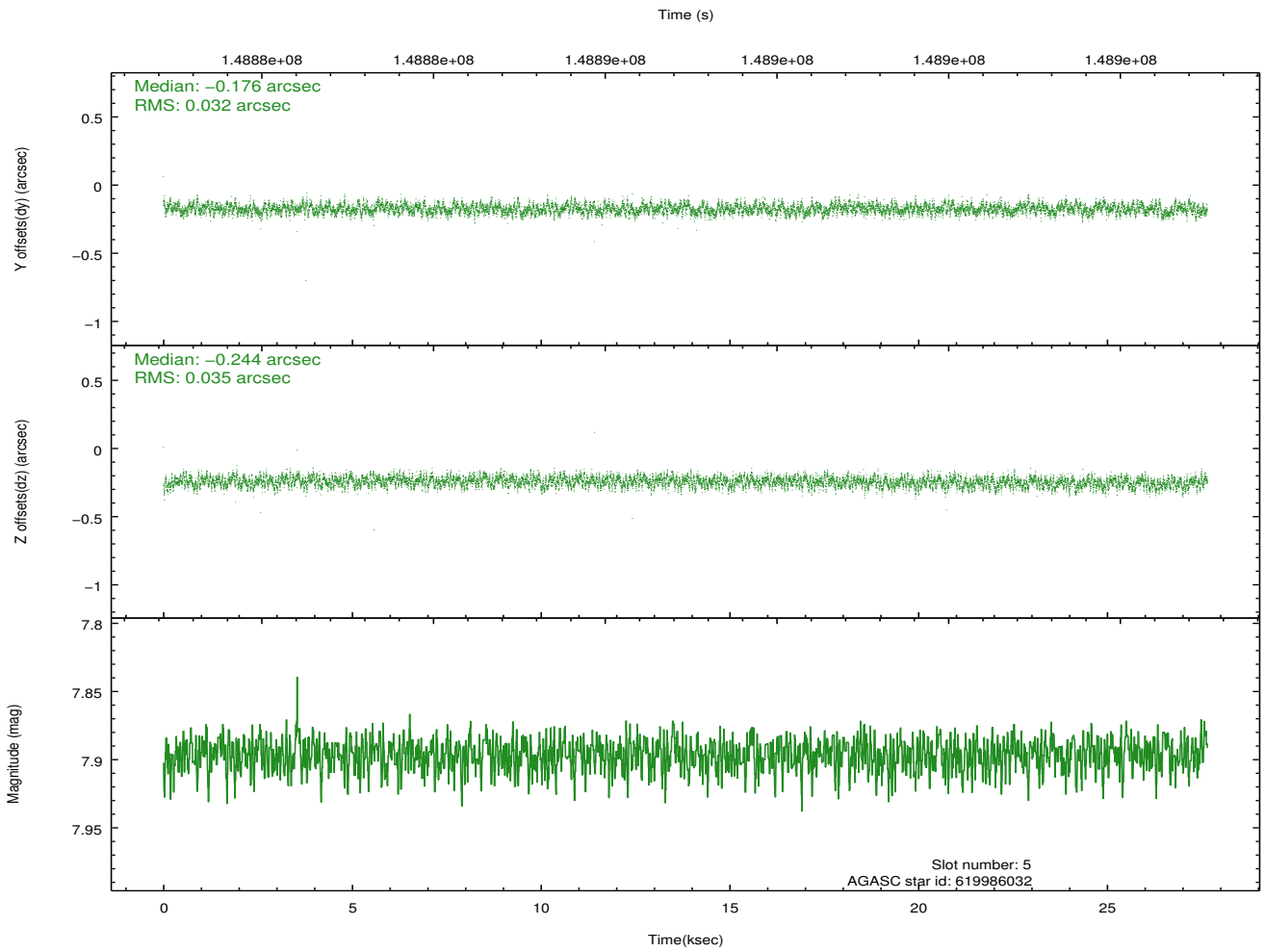
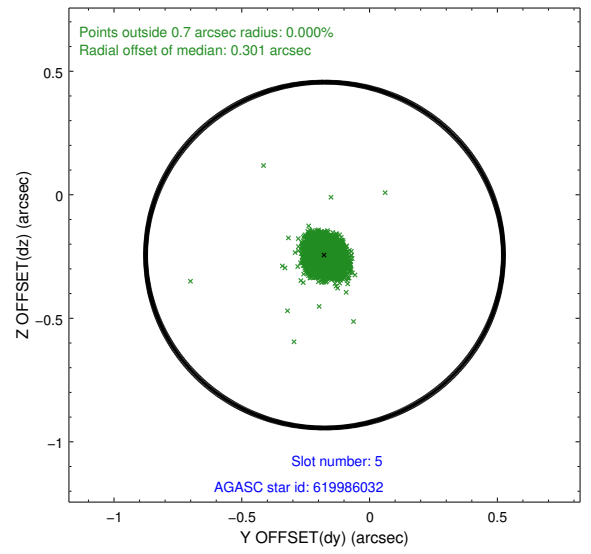
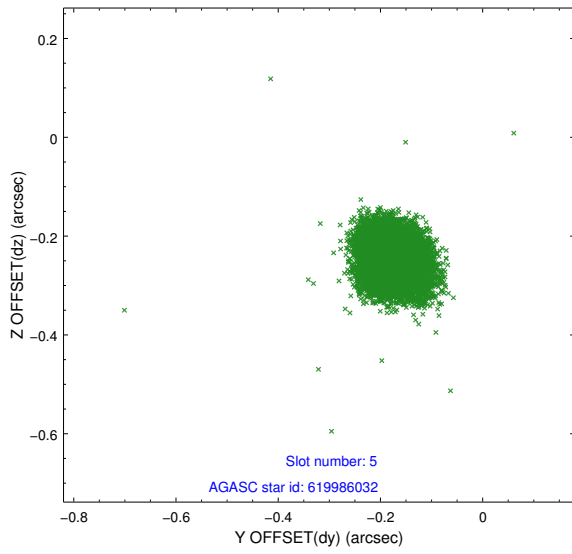
### 2.4.1 Slot 3



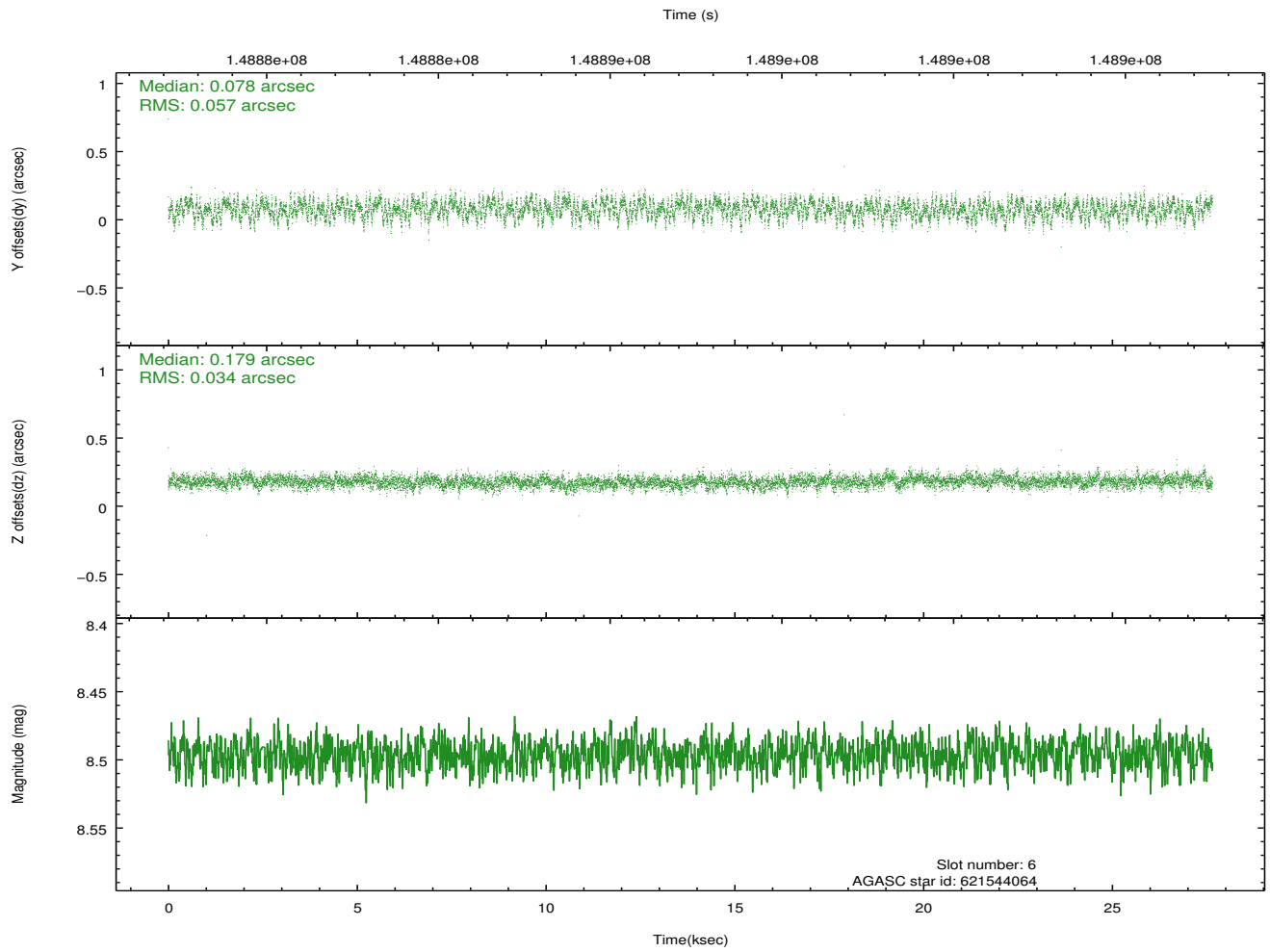
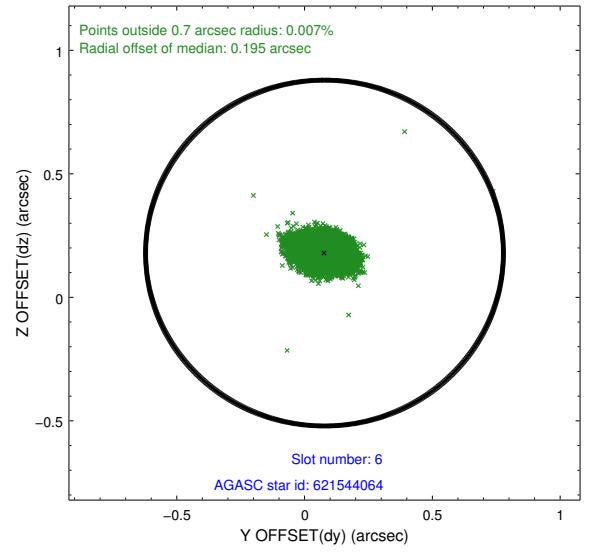
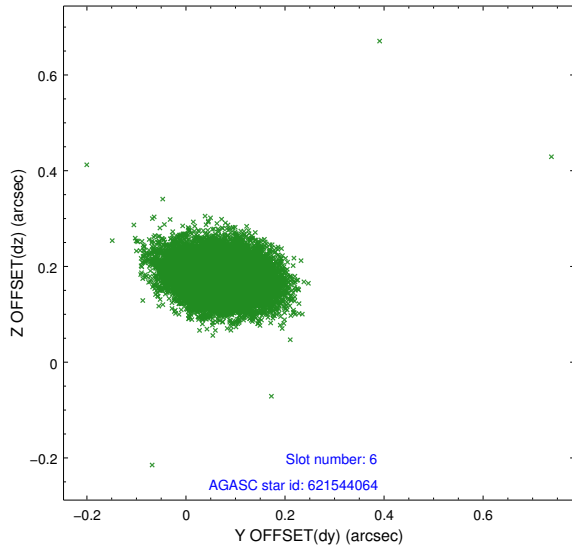
### 2.4.2 Slot 4



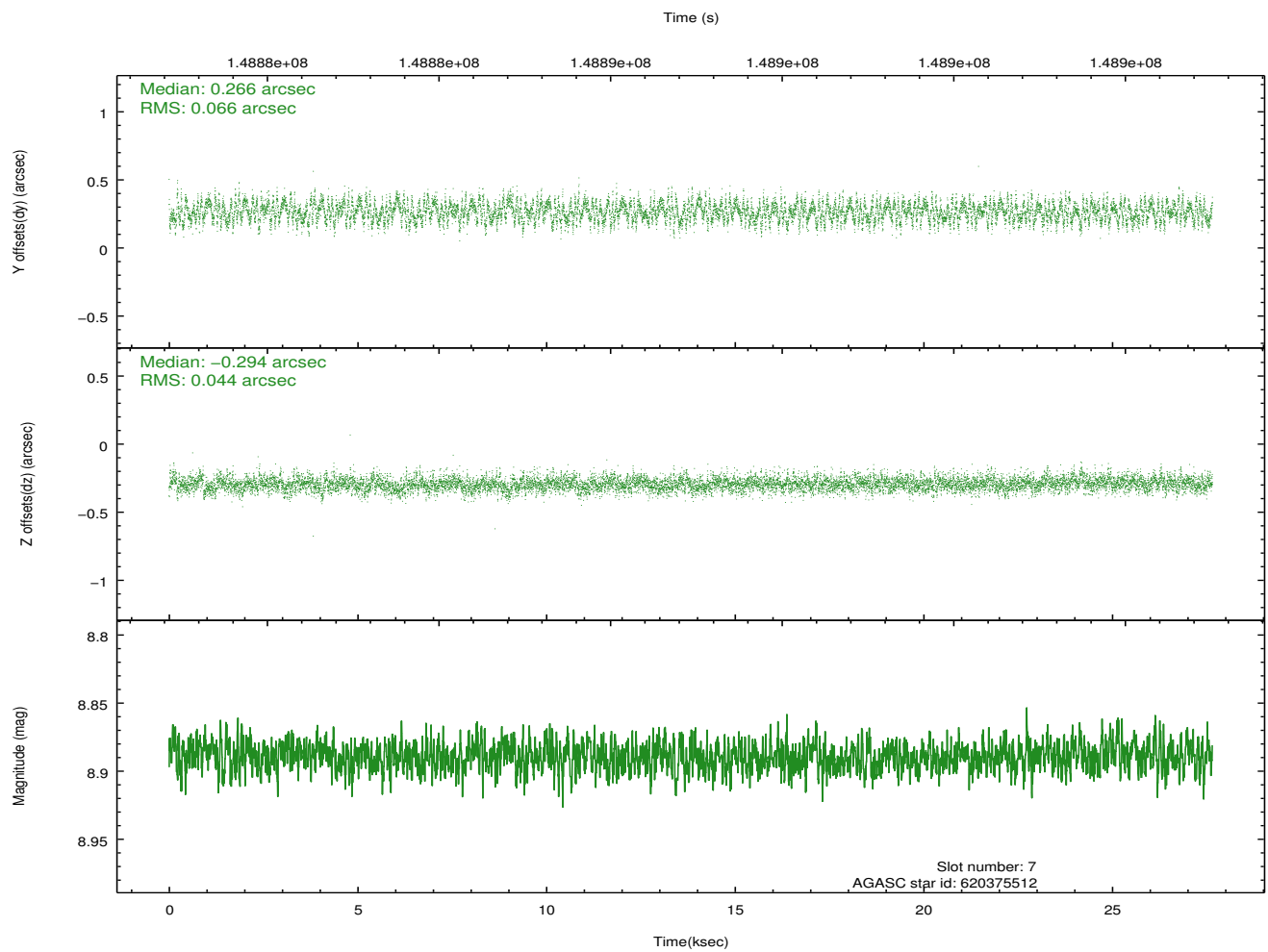
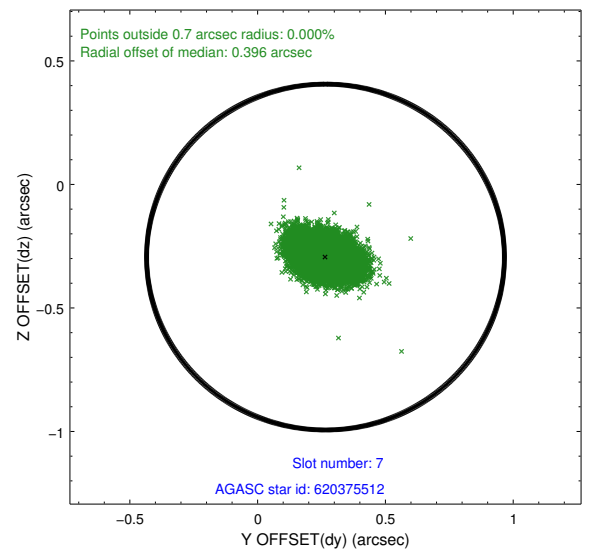
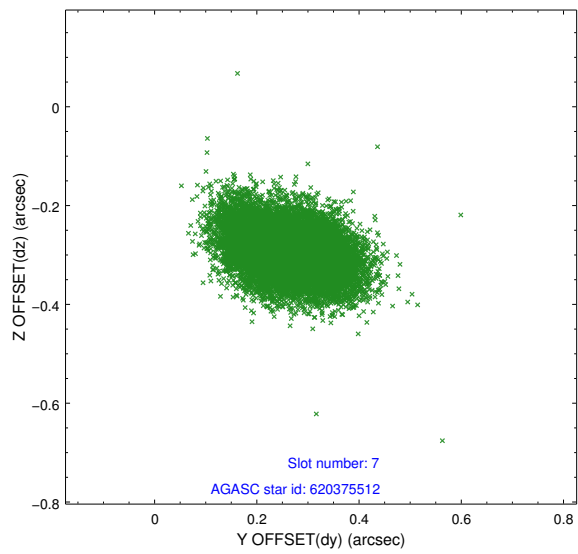
### 2.4.3 Slot 5



### 2.4.4 Slot 6

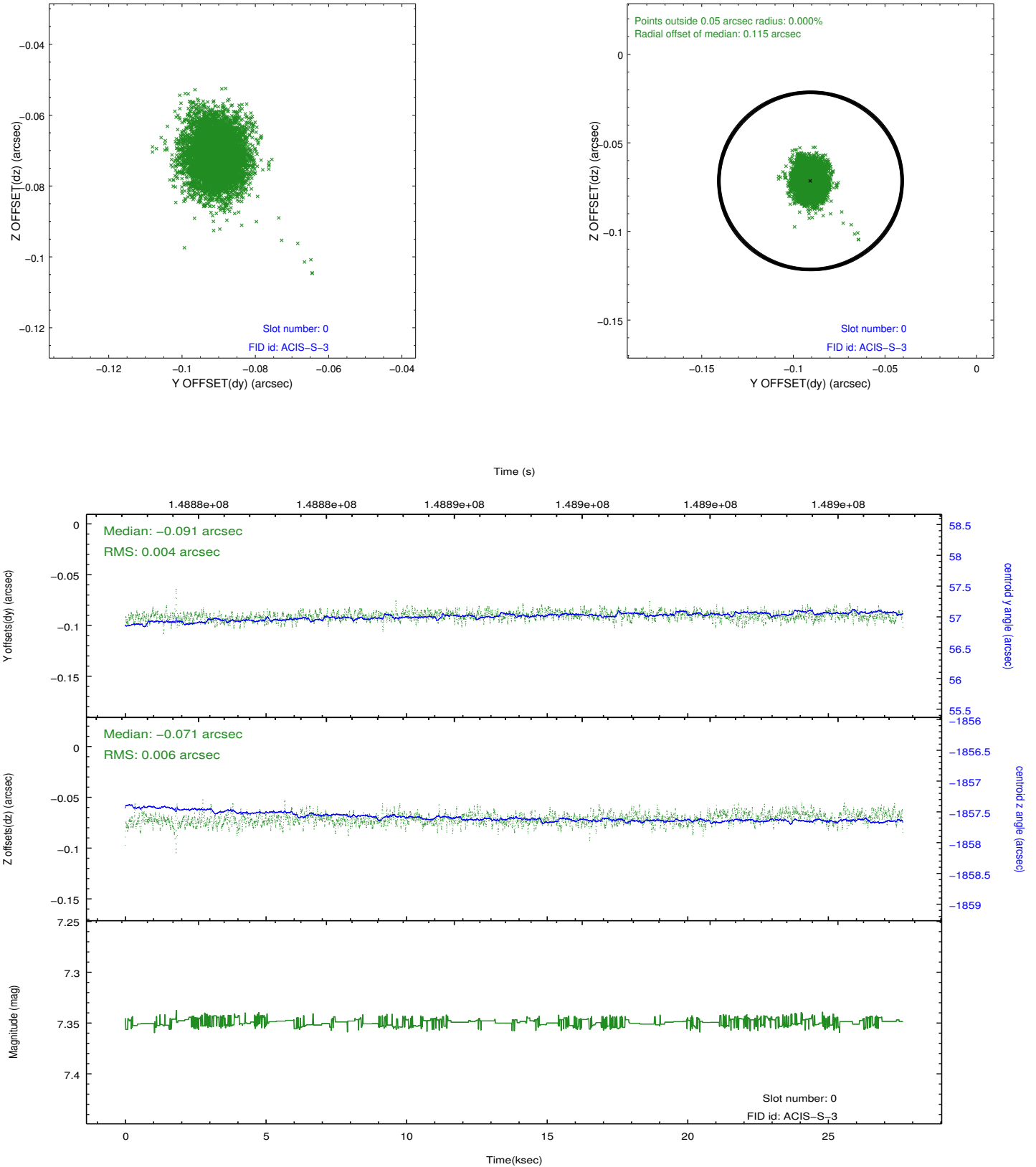


## 2.4.5 Slot 7

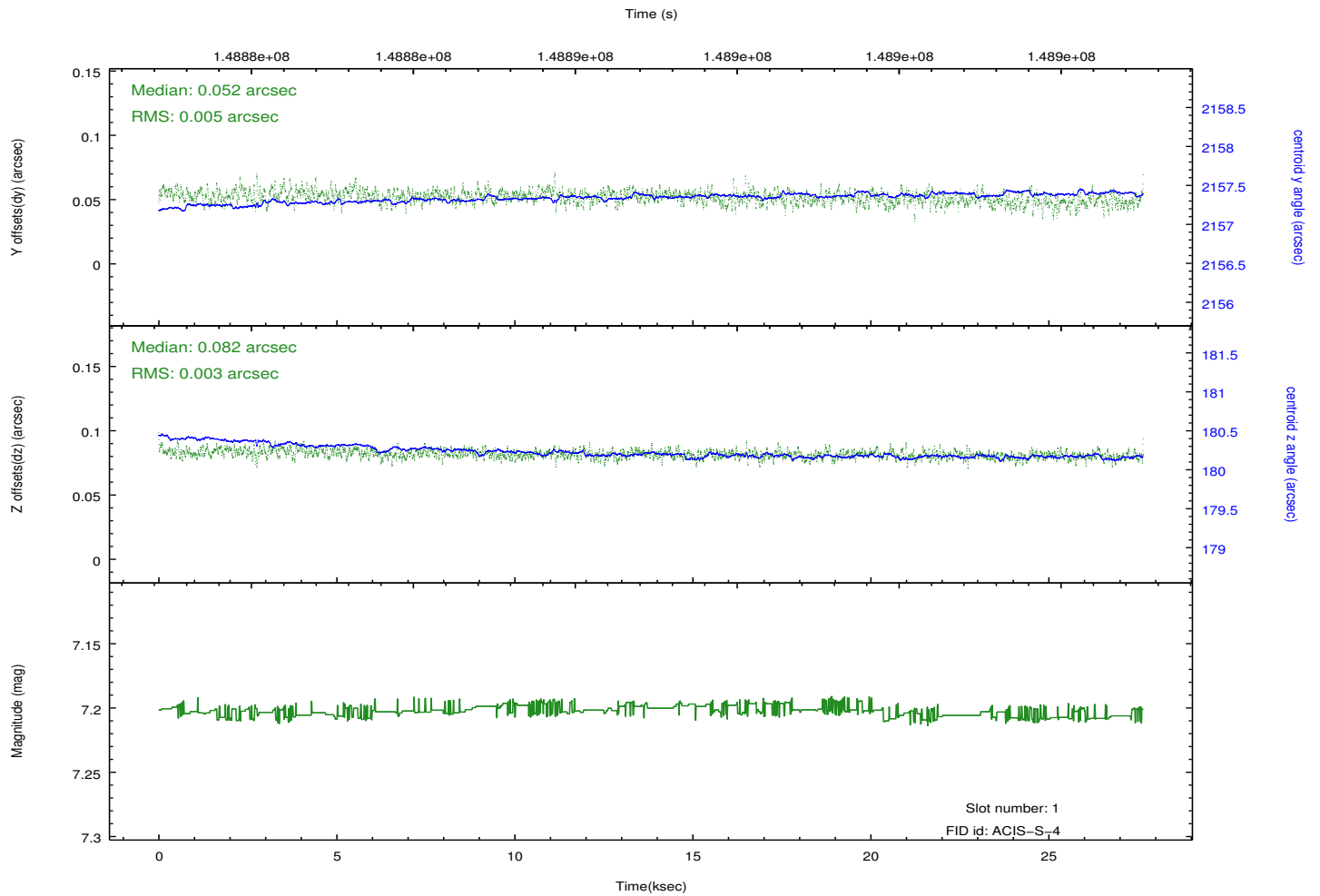
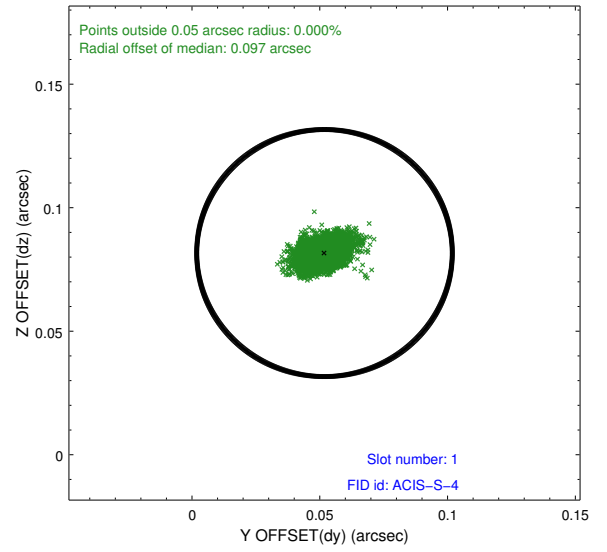
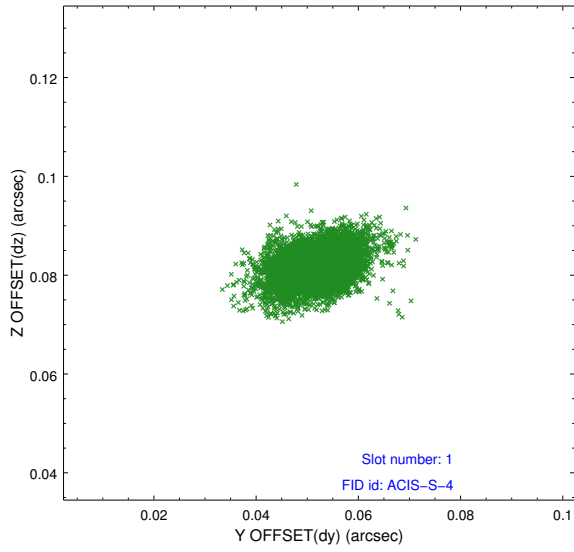


## 2.5 FID Slots

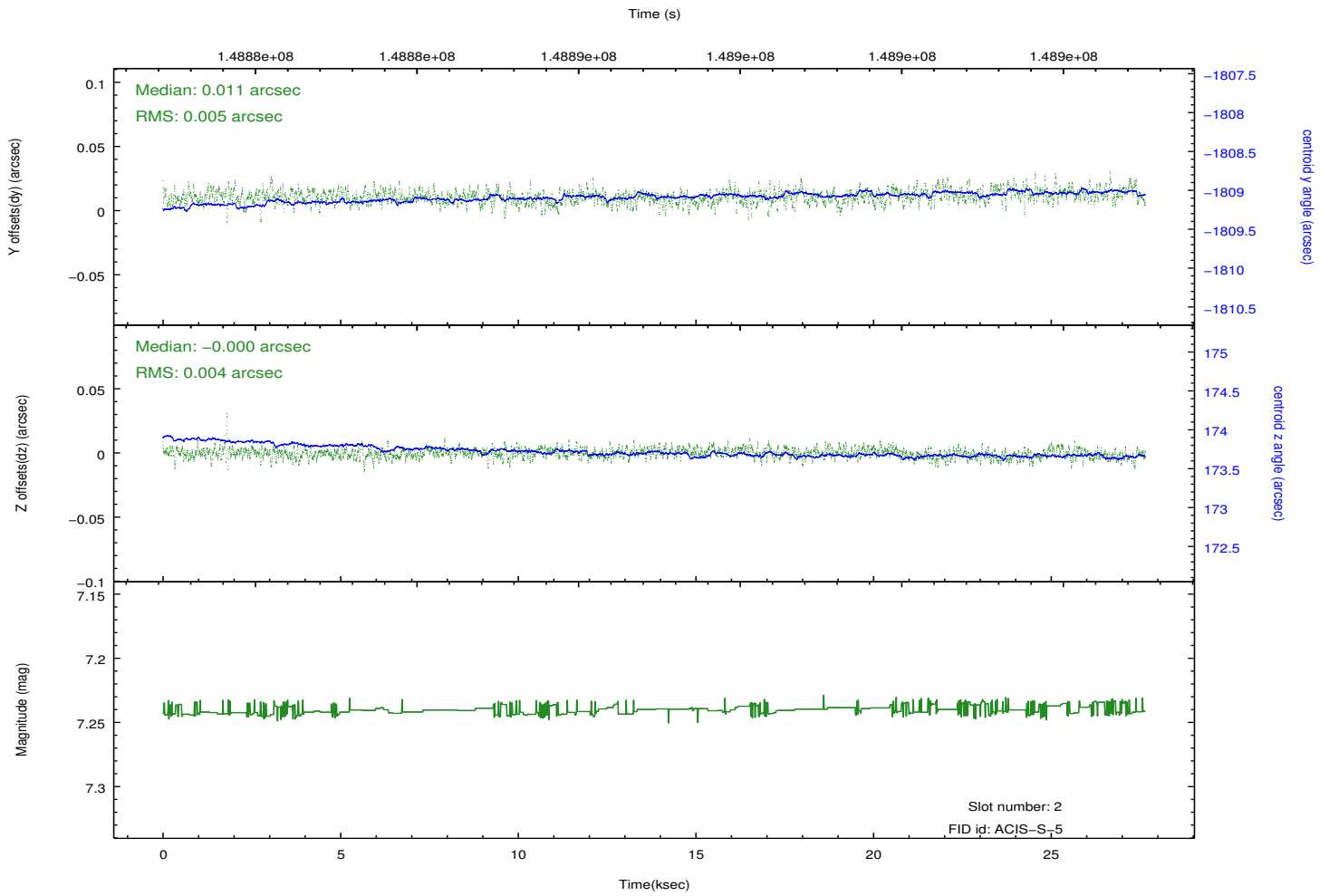
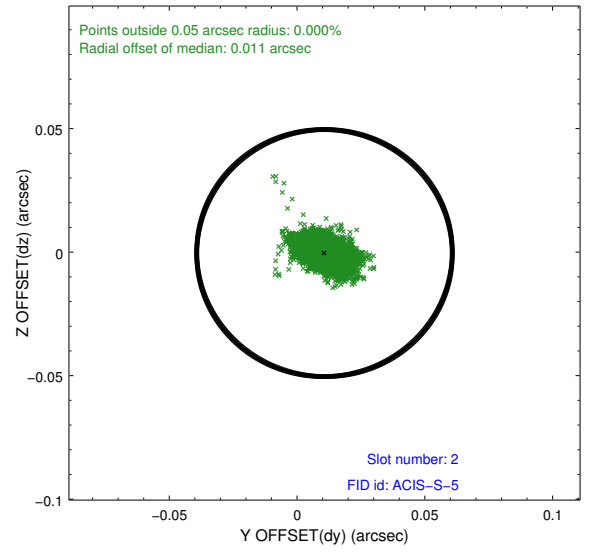
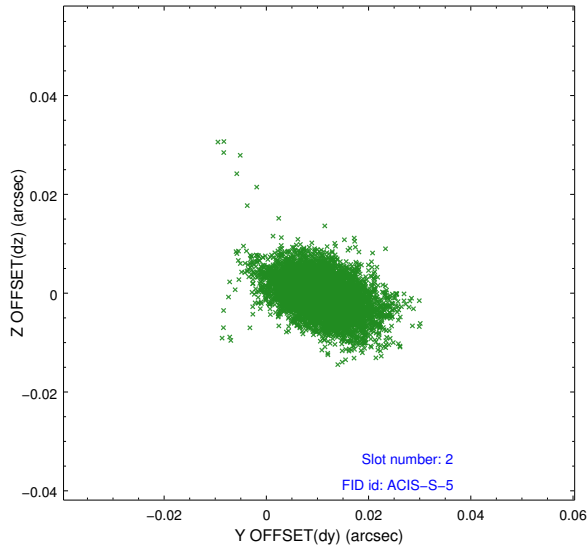
### 2.5.1 Slot 0



## 2.5.2 Slot 1



### 2.5.3 Slot 2



# A Summary

## A.1 Status

V&V Scientist	Beth Sundheim
V&V Date (YYYY-MM-DD)	2012.10.24
V&V Edition	1
V&V Disposition and Status	OK
V&V Charge Time	27.106

## A.2 Comments