

# V&V Reference Report

## L2 ASCDS Version : 8.4.5

Observation 4421 - L2 Version 3  
Chandra X-Ray Center

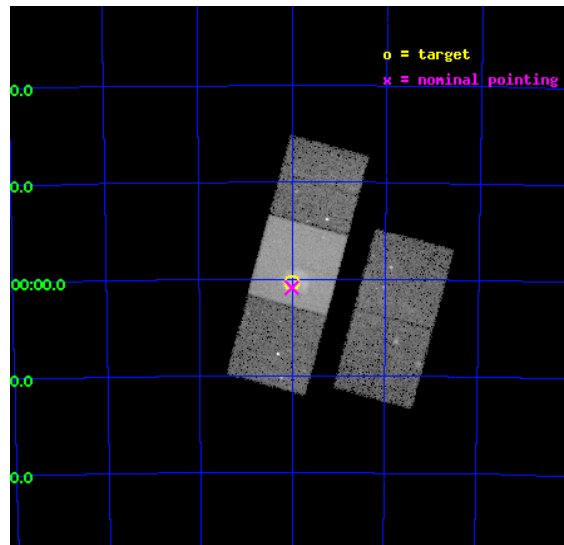
L2 Processing Date : Oct 23 2012

## Contents

<b>1</b>	<b>Front</b>	<b>2</b>
<b>2</b>	<b>OBI</b>	<b>3</b>
2.1	OBI . . . . .	3
2.1.1	Images . . . . .	3
2.1.2	Bias . . . . .	3
2.1.3	Parameters . . . . .	4
2.1.4	Events . . . . .	4
2.2	Compared Parameters . . . . .	5
2.3	Aspect . . . . .	6
2.4	Star Slots . . . . .	9
2.4.1	Slot 3 . . . . .	9
2.4.2	Slot 4 . . . . .	10
2.4.3	Slot 5 . . . . .	11
2.4.4	Slot 6 . . . . .	12
2.4.5	Slot 7 . . . . .	13
2.5	FID Slots . . . . .	14
2.5.1	Slot 0 . . . . .	14
2.5.2	Slot 1 . . . . .	15
2.5.3	Slot 2 . . . . .	16
<b>A</b>	<b>Summary</b>	<b>17</b>
A.1	Status . . . . .	17
A.2	Comments . . . . .	17

# 1 Front

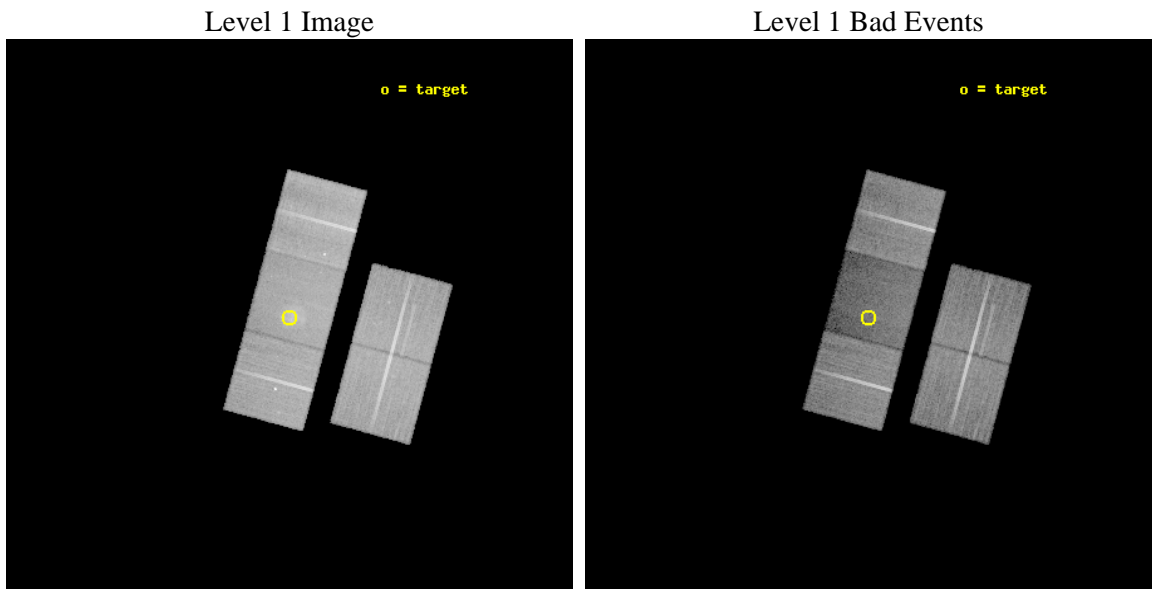
seq_num	500327	Sequence number
obs_id	4421	Observation id
title	SUPERNOVA REMNANTS IN THE MAGELLANIC CLOUDS	Proposal title
observer	Frederick Seward	Principal investigator
object	0532-710 [N206]	Source name
dtycycle	0	&#160
cycle	P	events from which exps? Prim/Second/Both
ra_targ	83.0	Observer's specified target RA [deg]
dec_targ	-71.005556	Observer's specified target Dec [deg]
ra_nom	83.002582413326	Nominal RA [deg]
dec_nom	-71.015176812915	Nominal Dec [deg]
roll_nom	285.15905953536	Nominal Roll [deg]
revision	3	Processing version of data
ontime	35150.899932384	Sum of GTIs [s]
livetime	34691.627547052	Livetime [s]
ontime2	35144.618001968	Sum of GTIs [s]
ontime3	35144.618001908	Sum of GTIs [s]
ontime6	35150.899932384	Sum of GTIs [s]
ontime7	35150.899932384	Sum of GTIs [s]
ontime8	35147.758942246	Sum of GTIs [s]
l2events	158458	Number of level 2 events



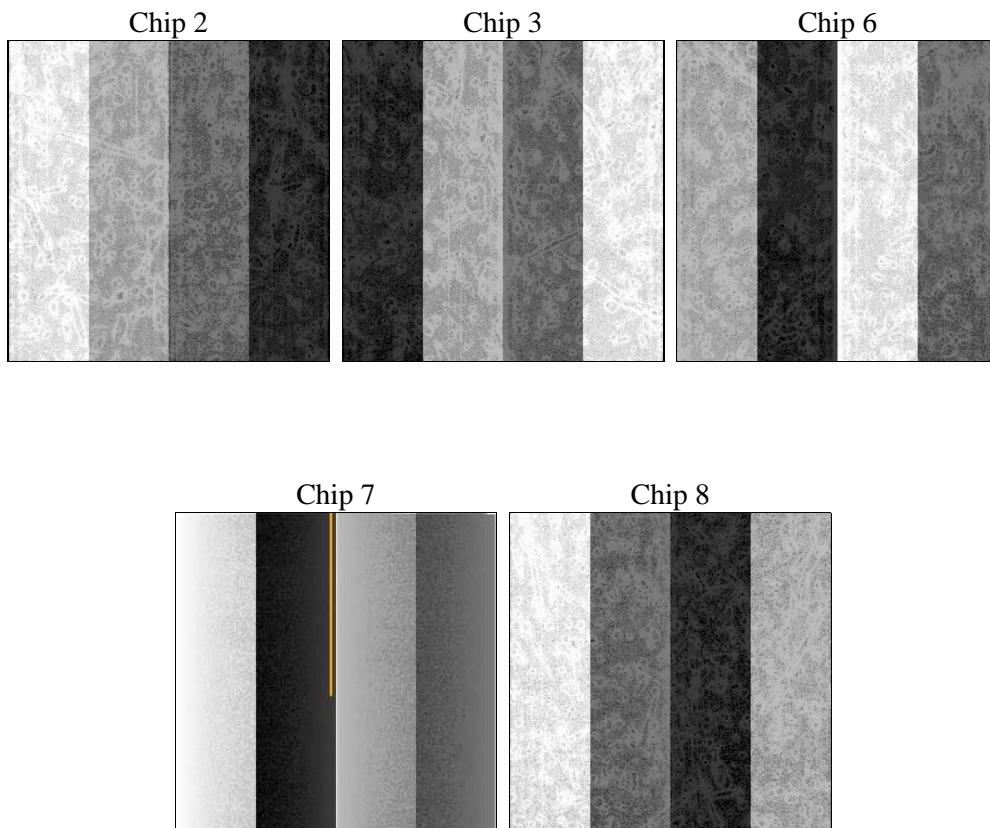
## 2 OBI

### 2.1 OBI

#### 2.1.1 Images



#### 2.1.2 Bias



### 2.1.3 Parameters

obi_num	1	Obi number	sched_exp_time	35000.000000	[s] Scheduled observation exposure time
ascdsver	8.4.5	Processing system revision	ontime	35150.899932384	Sum of GTIs [s]
caldbver	4.5.2	&#160	ontime2	35144.618001968	Sum of GTIs [s]
date	2012-10-23T12:34:22	Date and time of file creation	ontime3	35144.618001908	Sum of GTIs [s]
revision	3	Processing version of data	ontime6	35150.899932384	Sum of GTIs [s]
			ontime7	35150.899932384	Sum of GTIs [s]
			ontime8	35147.758942246	Sum of GTIs [s]
			l1events	947036	Number of level 1 events

### 2.1.4 Events

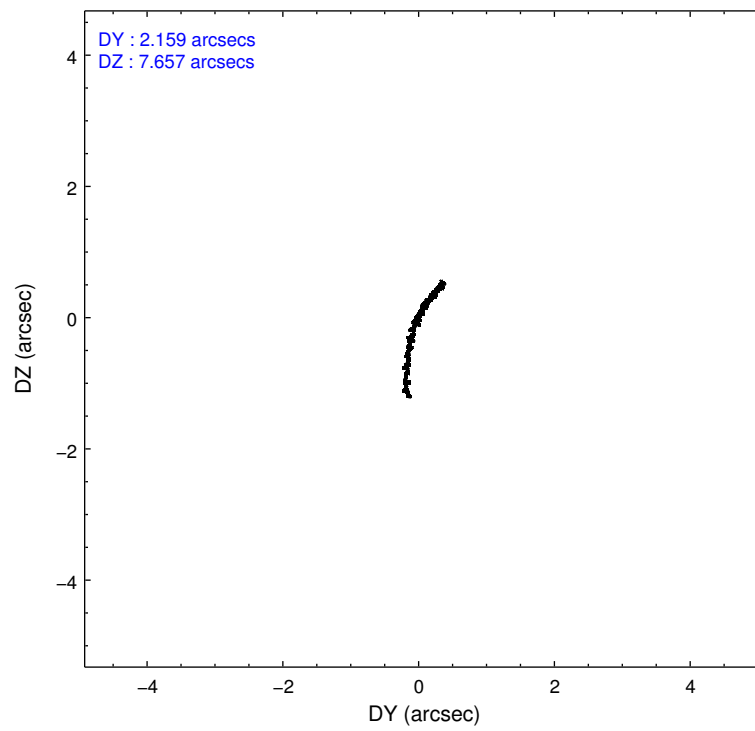
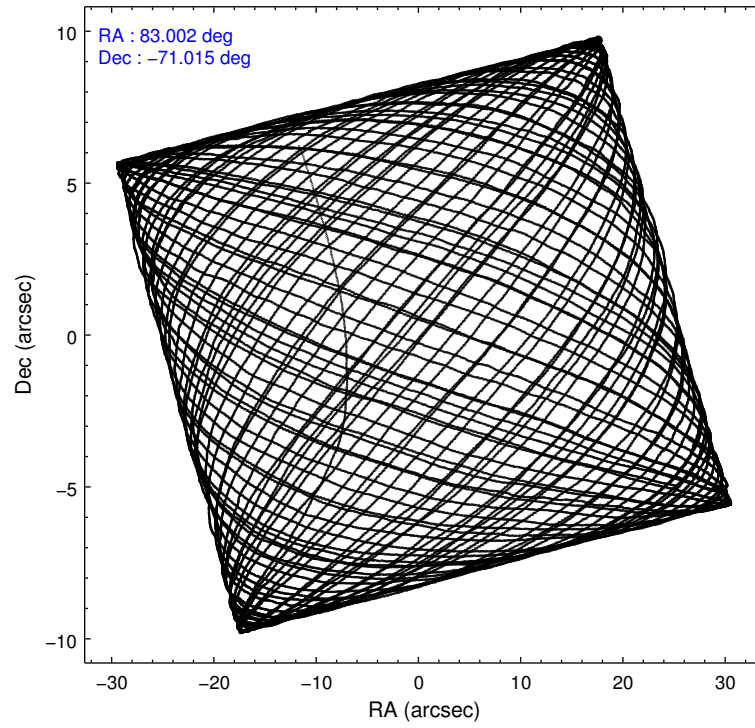
	ccd 2	ccd 3	ccd 6	ccd 7	ccd 8
level 1 events	184705	178171	182905	178807	222448
rejected events	166951	160404	162081	84719	171785
rejected %	90%	90%	88%	47%	77%

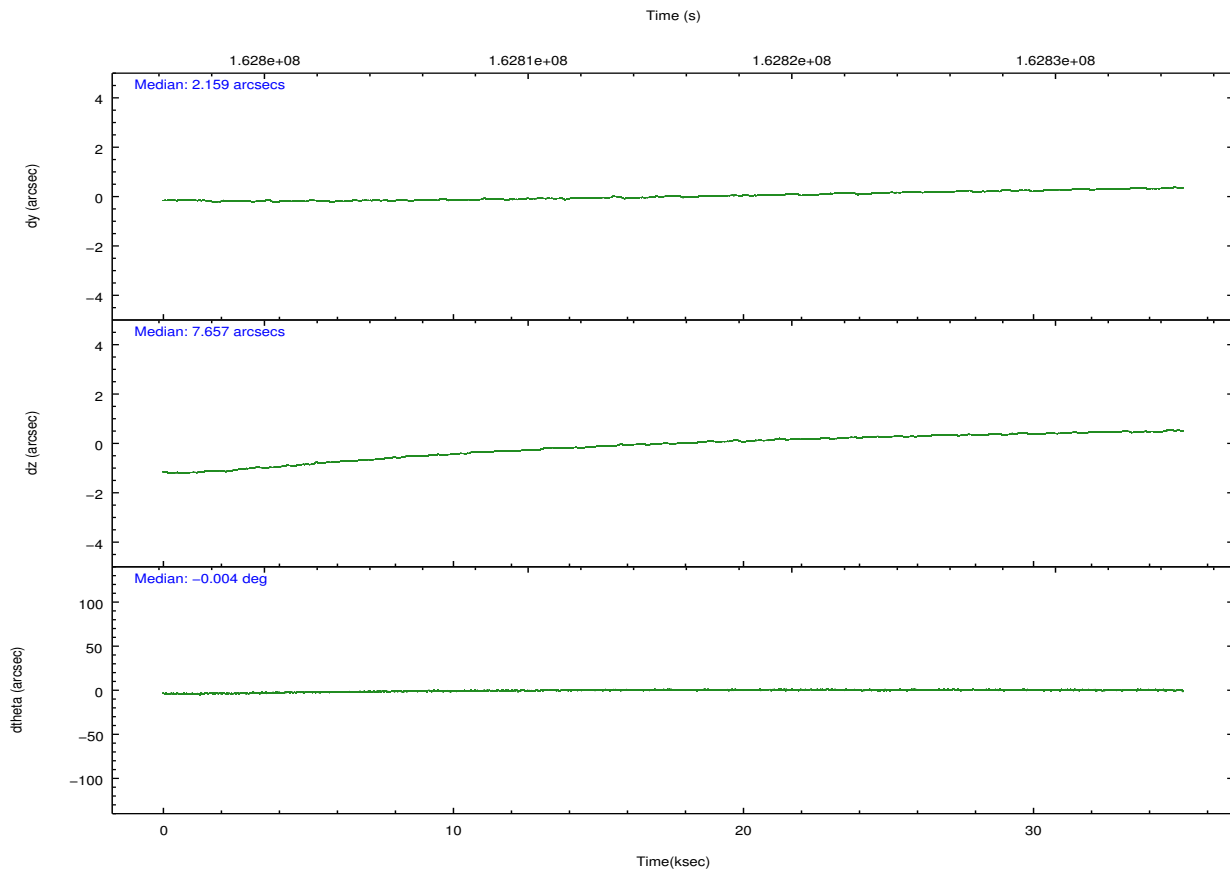
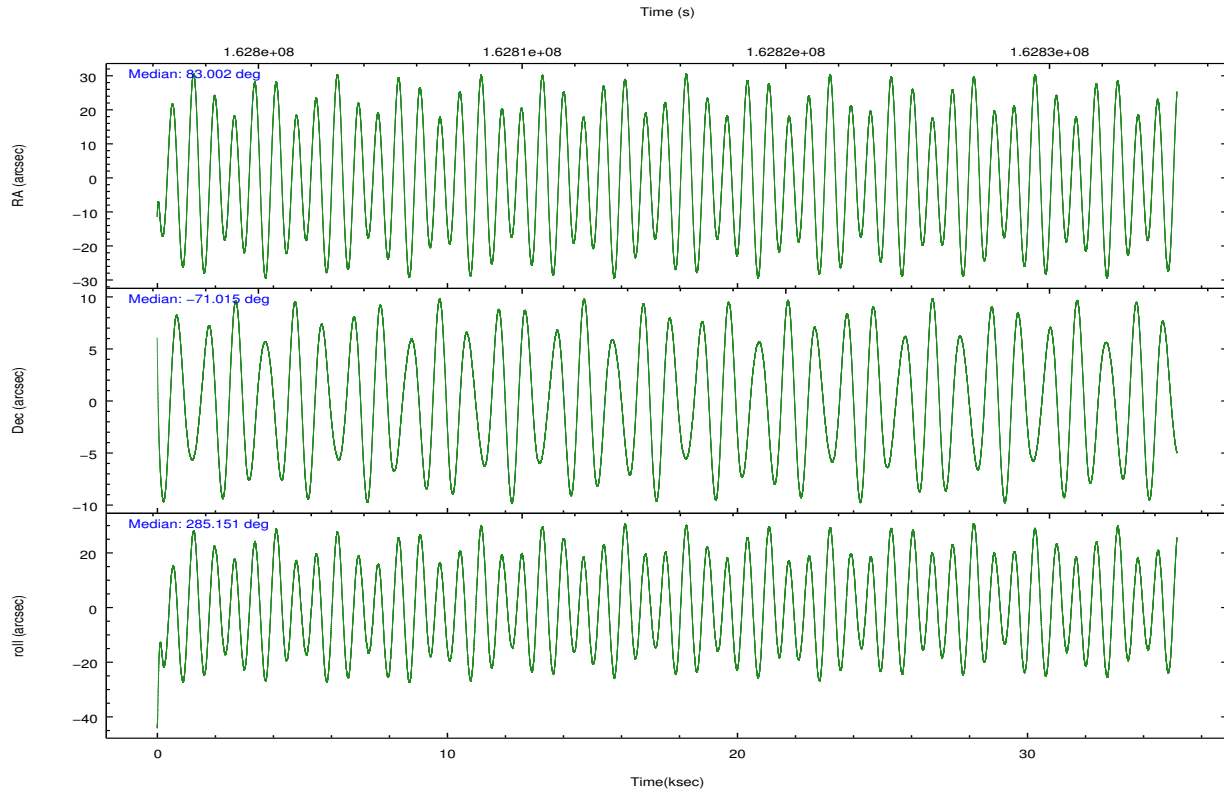
	ccd 2	ccd 3	ccd 6	ccd 7	ccd 8
grade 0 events	7223	7596	8990	13068	15034
	3%	4%	4%	7%	6%
grade 1 events	74	87	82	164	151
	0%	0%	0%	0%	0%
grade 2 events	3768	3474	4082	20476	11203
	2%	1%	2%	11%	5%
grade 3 events	1941	1913	2116	9729	5751
	1%	1%	1%	5%	2%
grade 4 events	1917	1884	2064	9504	5428
	1%	1%	1%	5%	2%
grade 5 events	4790	5738	6095	18098	8656
	2%	3%	3%	10%	3%
grade 6 events	2953	2954	3631	41572	13470
	1%	1%	1%	23%	6%
grade 7 events	162039	154525	155845	66196	162755
	87%	86%	85%	37%	73%

## 2.2 Compared Parameters

Parameter	Planned	Actual	Parameter	Planned	Actual
Instrument	ACIS	ACIS	Obspar format version number	7	7
Detector	ACIS-23678	ACIS-23678	Obspar file type	PREDICTED	ACTUAL
Grating	NONE	NONE	Obspar update status	NONE	UPDATED
Data mode	VFAINT	VFAINT	Number of optional ACIS chips dropped	0	0
Observation mode	POINTING	POINTING	On-chip summing requested	N	N
[deg] Pointing RA	82.942536	83.00258241332638	Subarray requested	NONE	NONE
[deg] Pointing Dec	-70.996252	-71.01517681291536	Alternating exposures requested	N	N
[deg] Pointing Roll	284.945661	285.1590595353601	[s] Primary exposure time	0.000000	3.1
[mm] SIM focus pos	-0.684267	-0.6828225247311905			
[mm] SIM defocus	0	0.001444936568705701			
[mm] SIM translation stage pos	-190.132523	-190.1400660498719			
[mm] SIM translation stage offset	0	0.00754346686406393			
[s] Observation start time (MET)	162798071.184000	162797034.75322			
Observation start date	2003-02-28T05:40:07	2003-02-28T05:23:54			
[s] Observation end time (MET)	162833071.184000	162833522.19226			
Observation end date	2003-02-28T15:23:27	2003-02-28T15:32:02			
Read mode	TIMED	TIMED			

## 2.3 Aspect



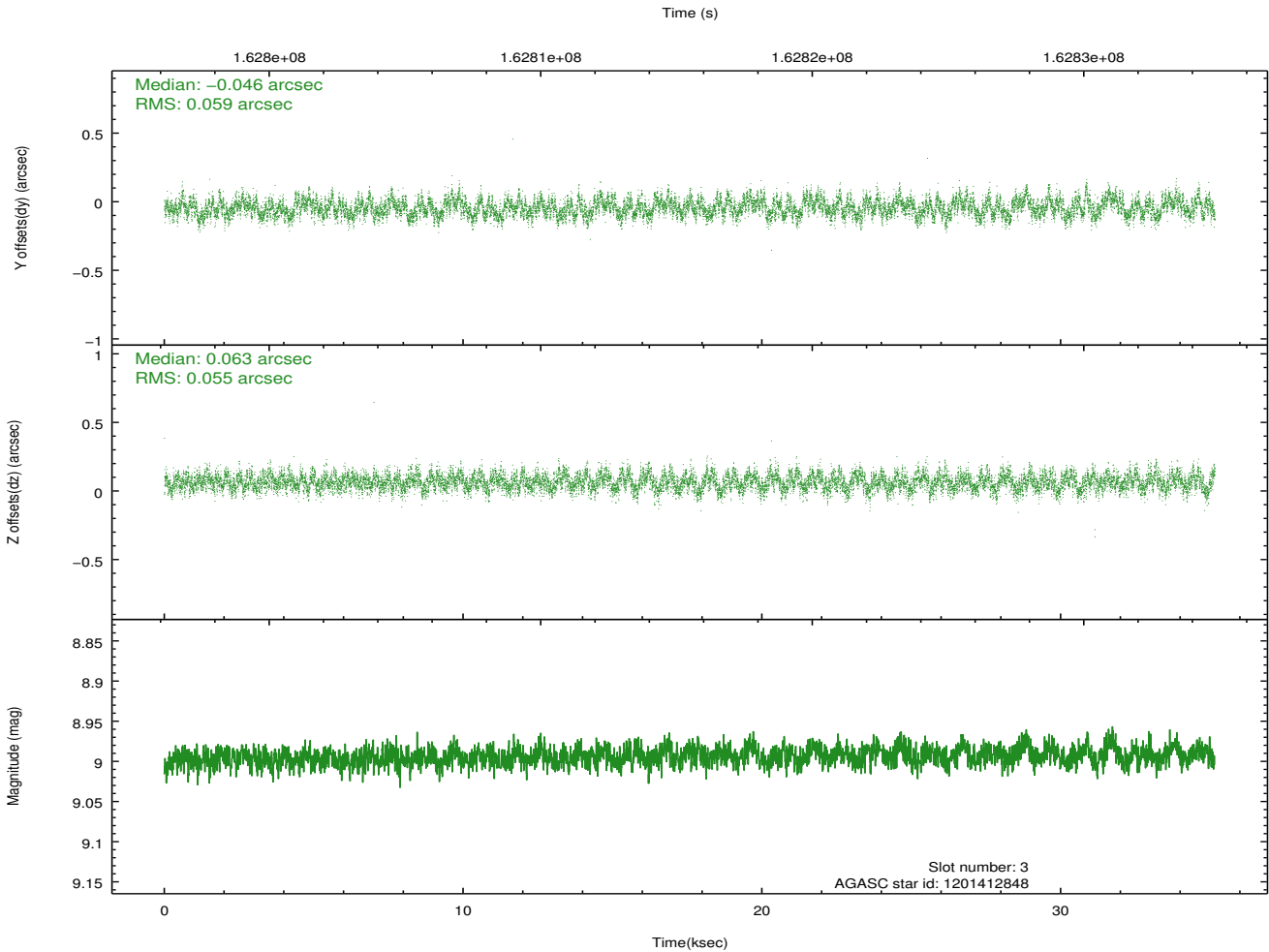
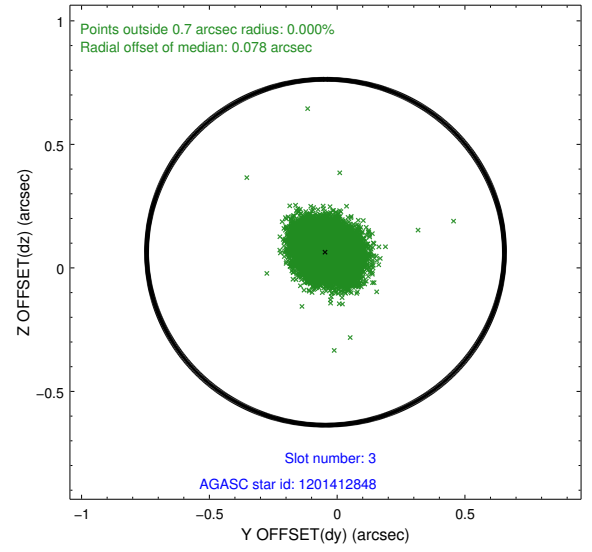
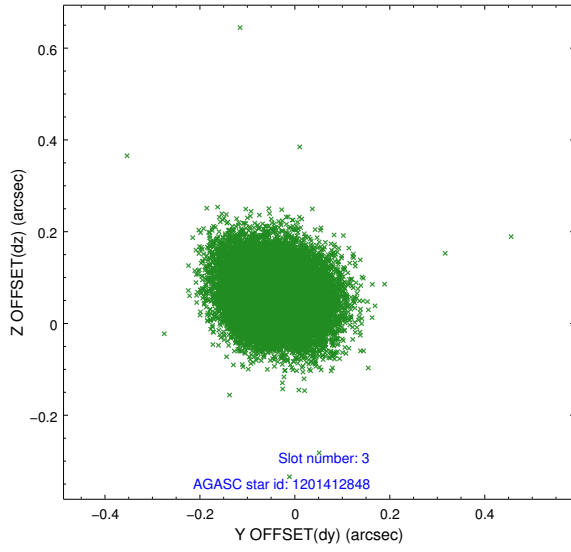


### Slot Statistics

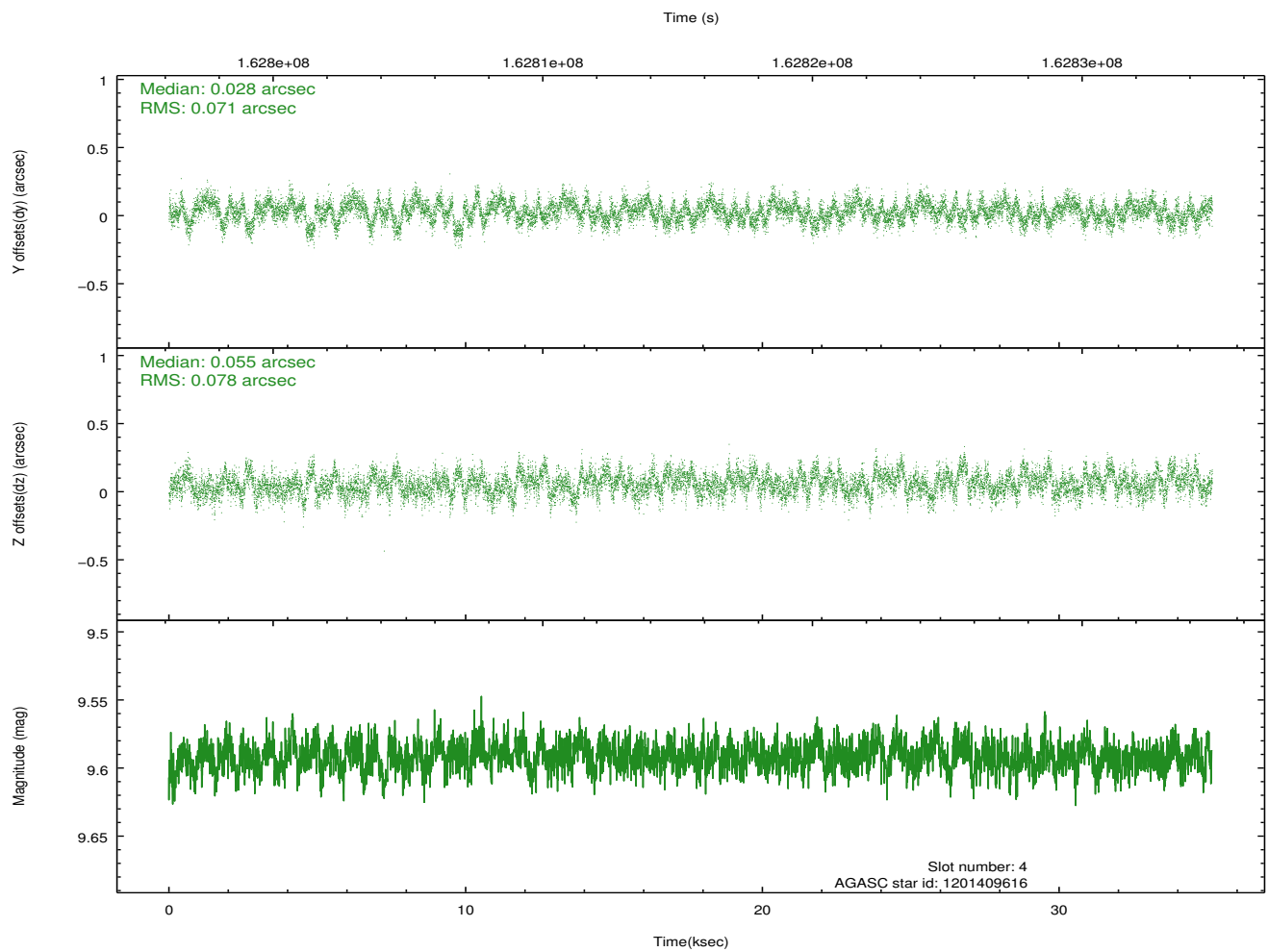
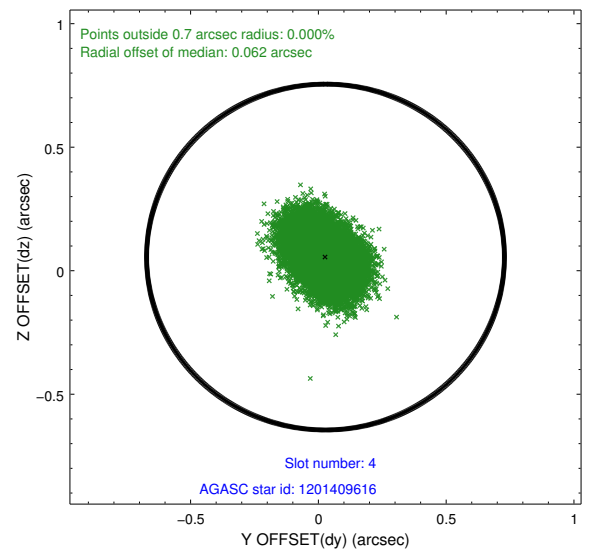
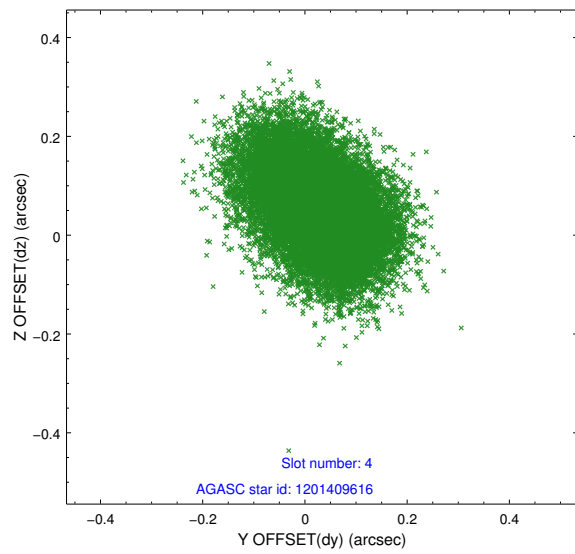
slot	status	id	mag	n_pts	med_dy	med_dz	dr1	dr2	ra	dec	mean_y	mean_z
0	FID	ACIS-S-2	7.11	8576	-0.020	-0.002	0.012	0.027	0.000000	0.000000	-754.83	-1728.70
1	FID	ACIS-S-4	7.20	8576	-0.020	0.011	0.008	0.015	0.000000	0.000000	2158.43	179.75
2	FID	ACIS-S-5	7.24	8576	0.013	0.001	0.013	0.023	0.000000	0.000000	-1807.58	173.46
3	GUIDE	1201412848	8.99	17148	-0.046	0.063	0.087	0.137	81.875057	-71.216960	459.60	-1402.70
4	GUIDE	1201409616	9.59	17140	0.028	0.055	0.112	0.183	81.670021	-70.738546	-1270.19	-1224.63
5	GUIDE	1201540760	8.56	17145	0.009	-0.065	0.103	0.163	84.403691	-70.419249	-1531.95	2233.49
6	GUIDE	1201542232	9.68	17134	0.047	-0.043	0.140	0.225	84.533398	-70.465667	-1327.50	2336.51
7	GUIDE	1202072504	9.10	17145	-0.028	-0.013	0.093	0.151	84.613647	-71.282090	1517.79	1593.60

## 2.4 Star Slots

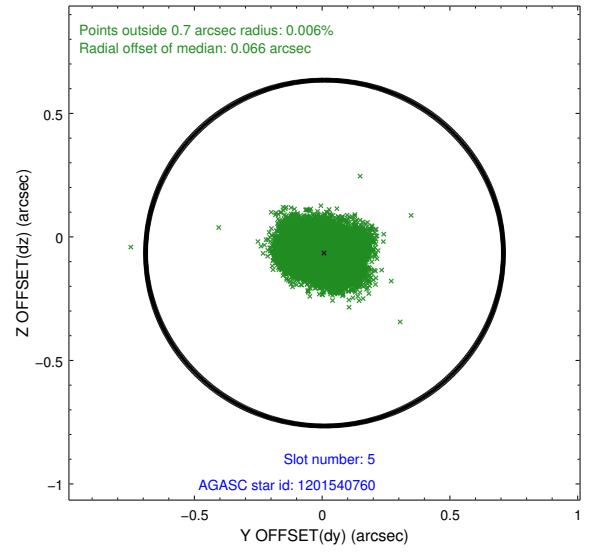
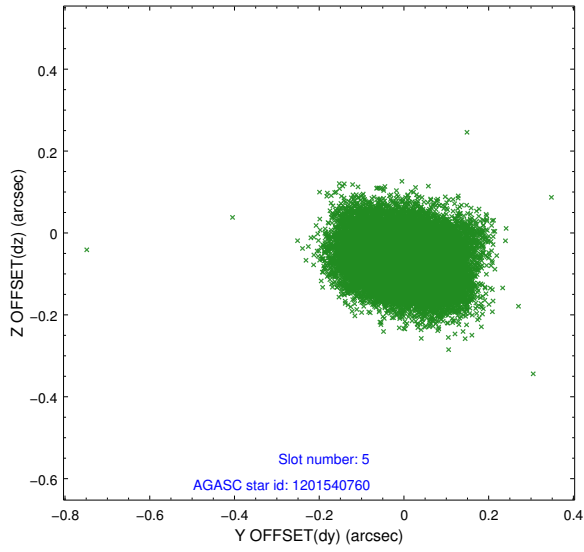
### 2.4.1 Slot 3



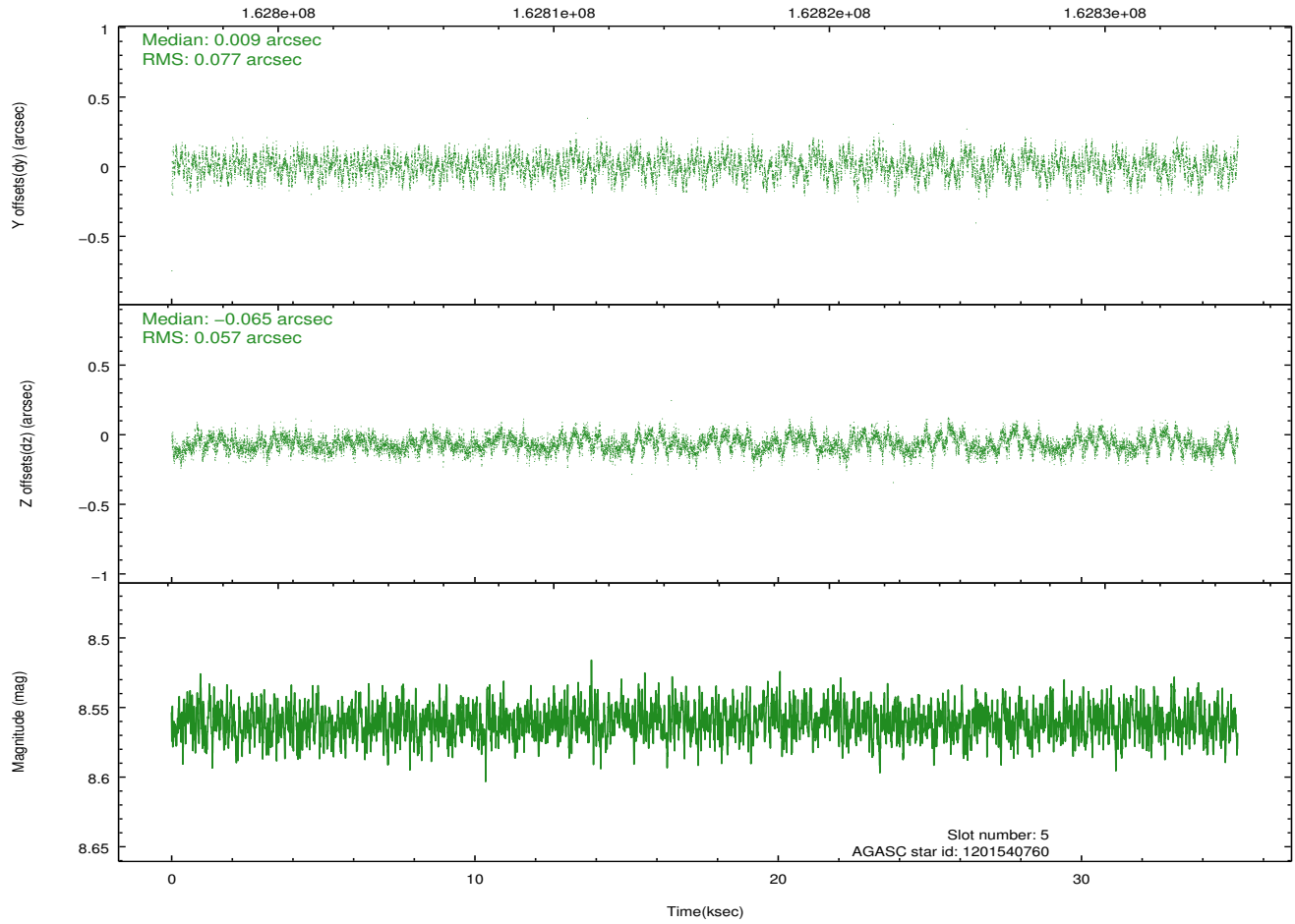
## 2.4.2 Slot 4



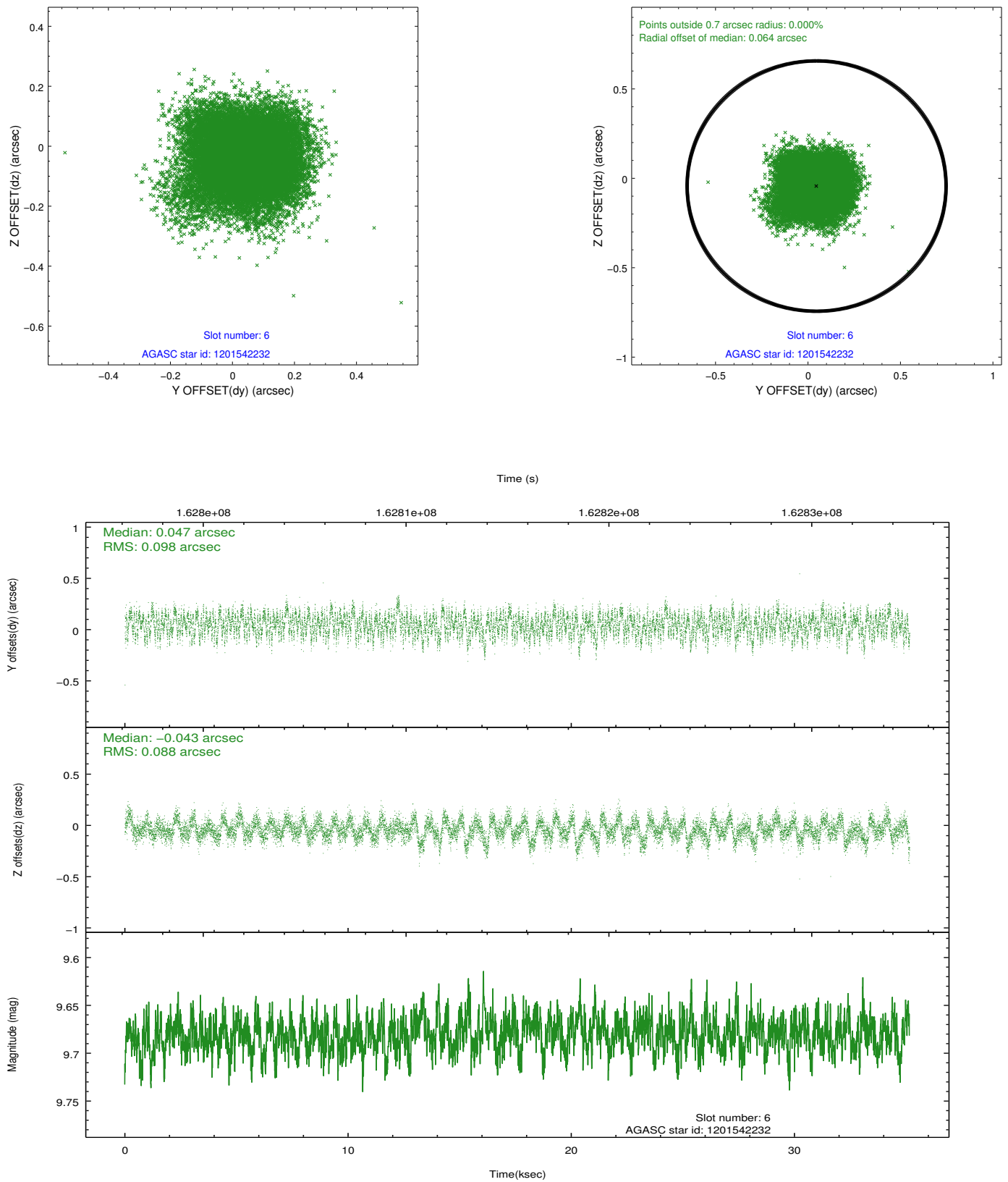
### 2.4.3 Slot 5



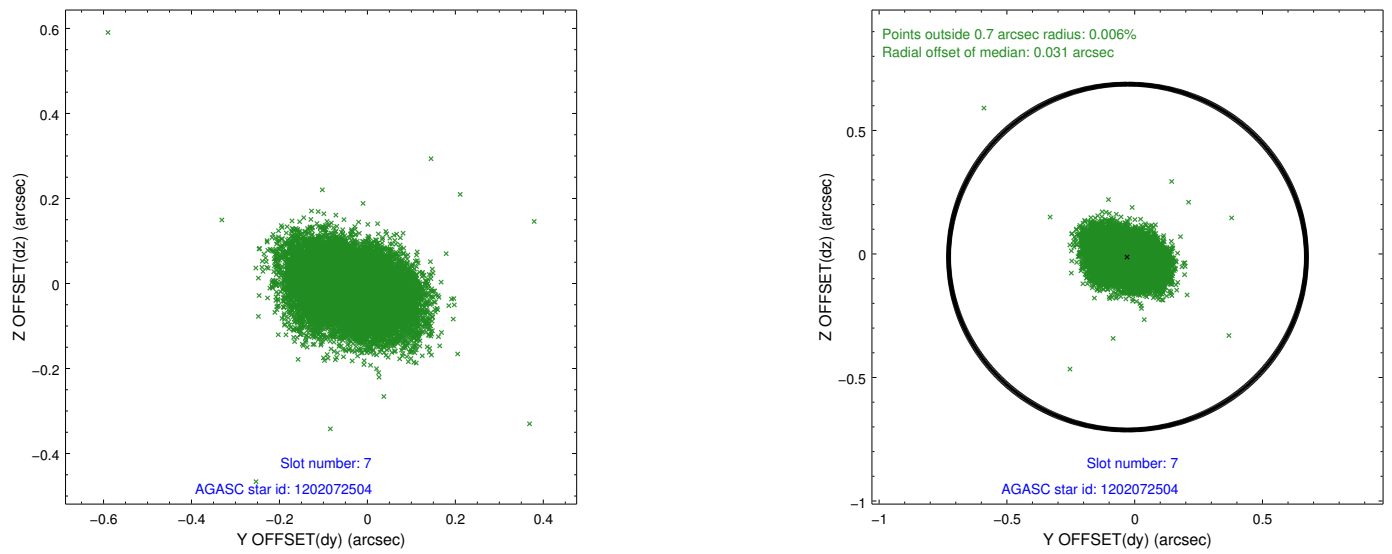
Time (s)



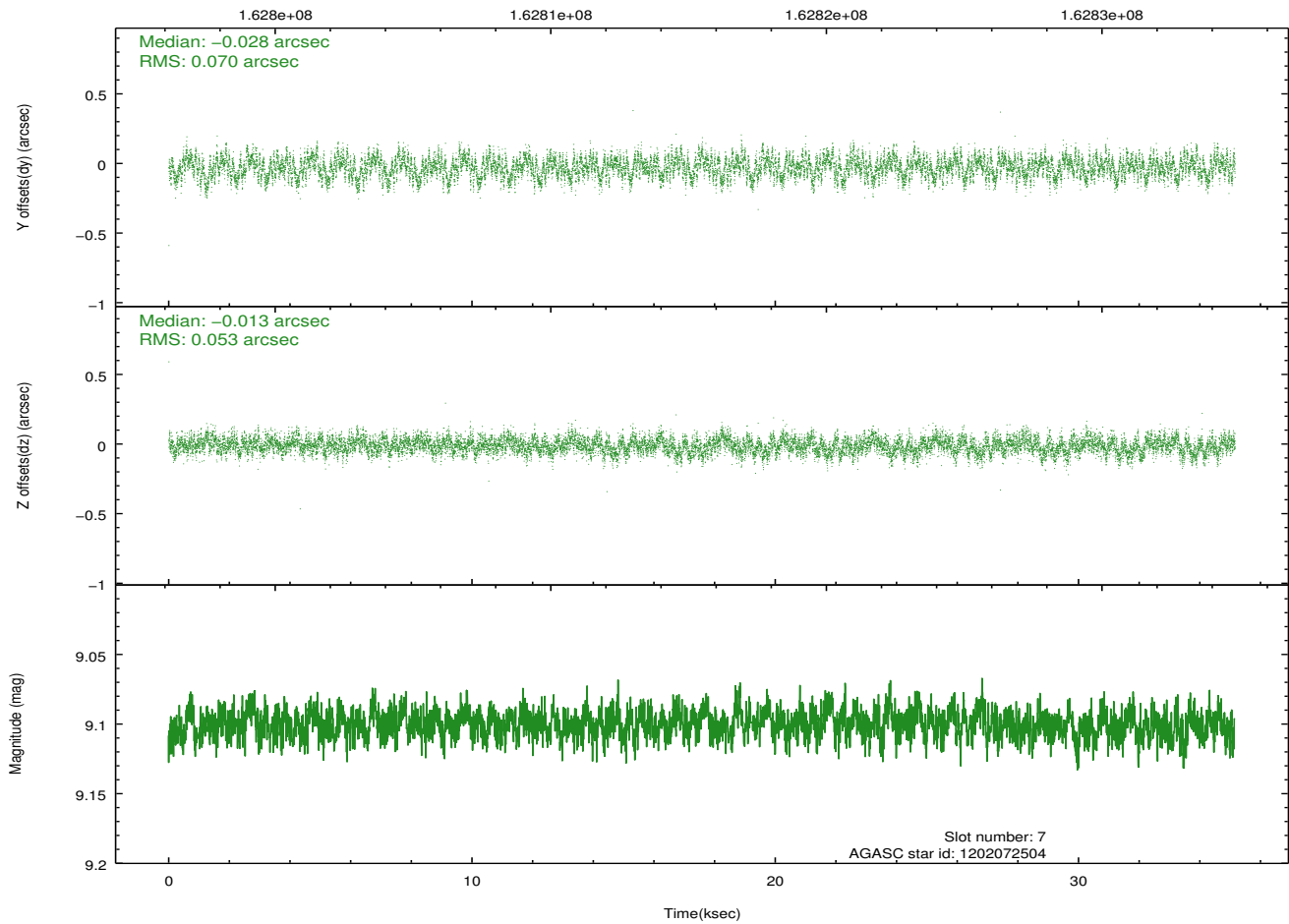
## 2.4.4 Slot 6



## 2.4.5 Slot 7

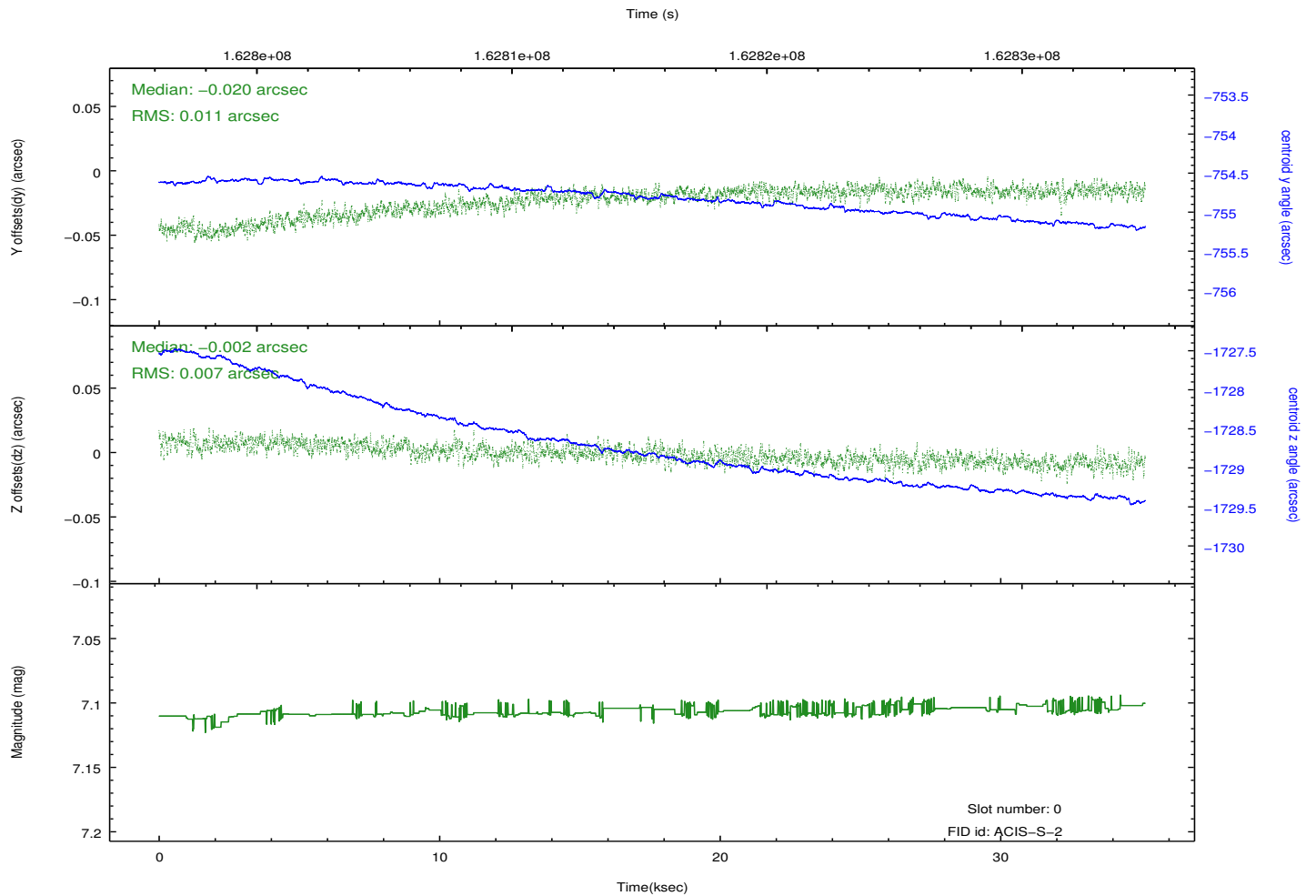
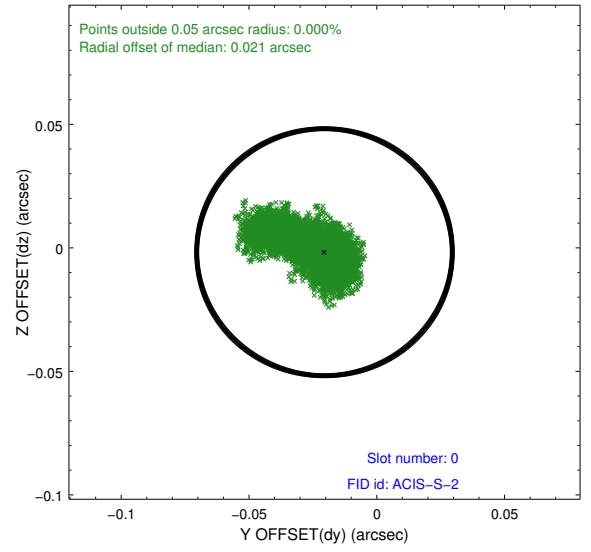
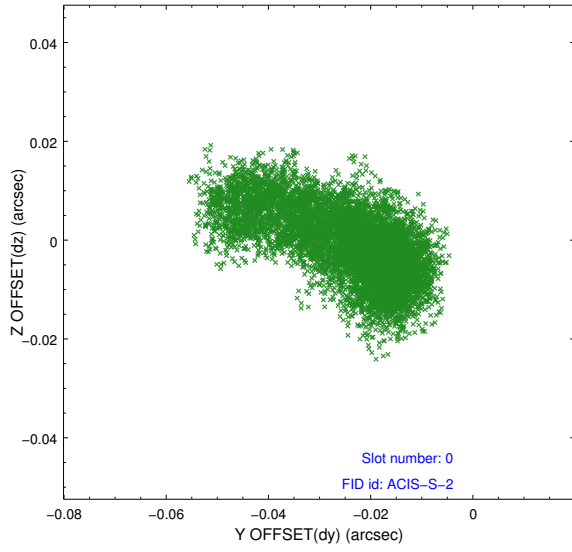


Time (s)

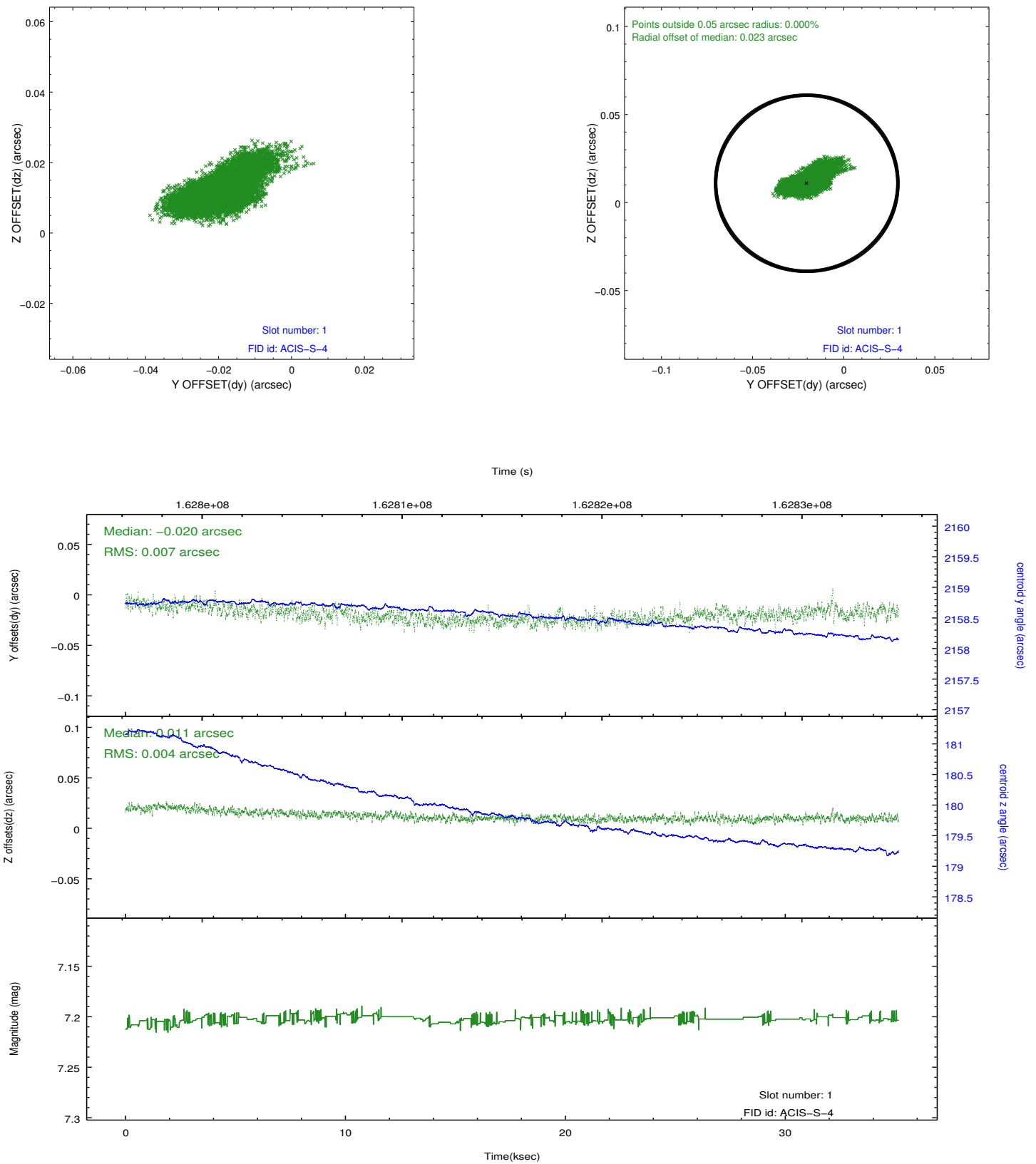


## 2.5 FID Slots

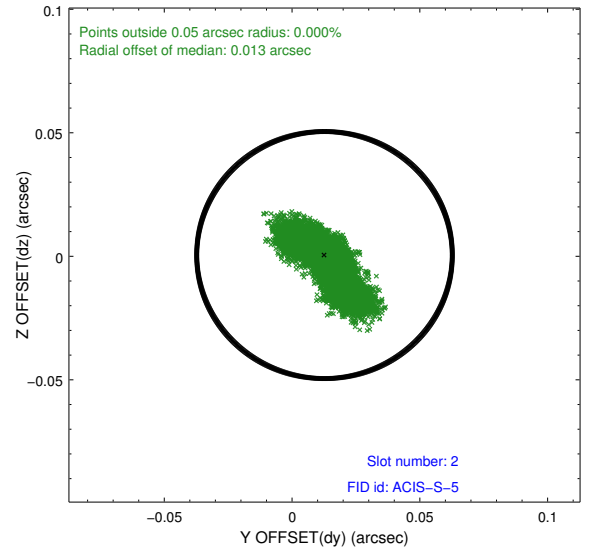
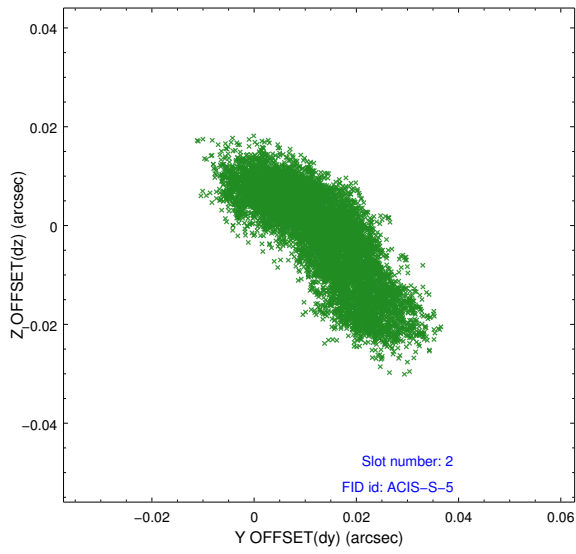
### 2.5.1 Slot 0



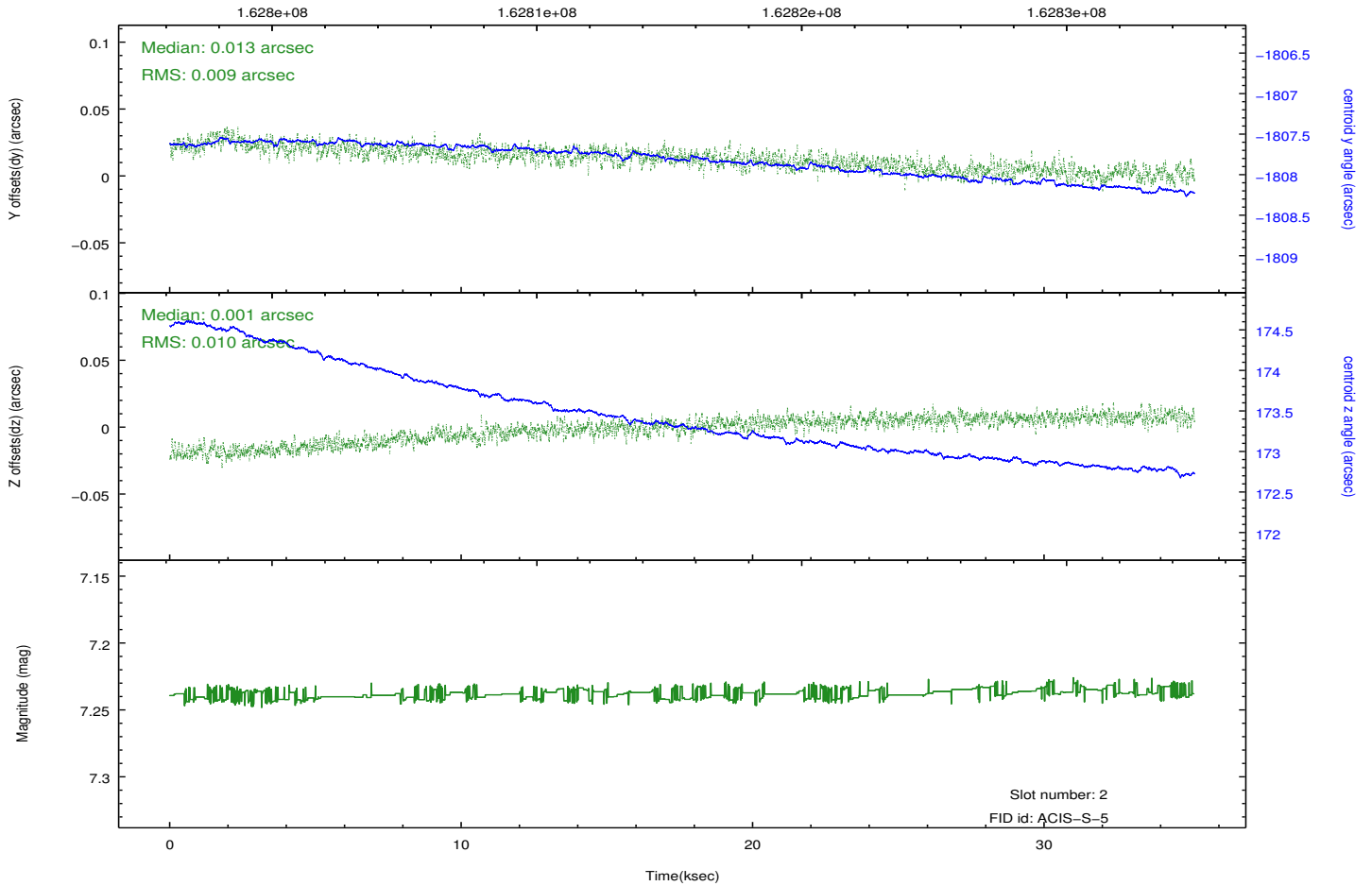
## 2.5.2 Slot 1



### 2.5.3 Slot 2



Time (s)



## A Summary

### A.1 Status

V&V Scientist	Jen Lauer
V&V Date (YYYY-MM-DD)	2012.11.07
V&V Edition	1
V&V Disposition and Status	OK
V&V Charge Time	35.15

### A.2 Comments