

V&V Reference Report

L2 ASCDS Version : 8.5

Observation 4491 - L2 Version 3
Chandra X-Ray Center

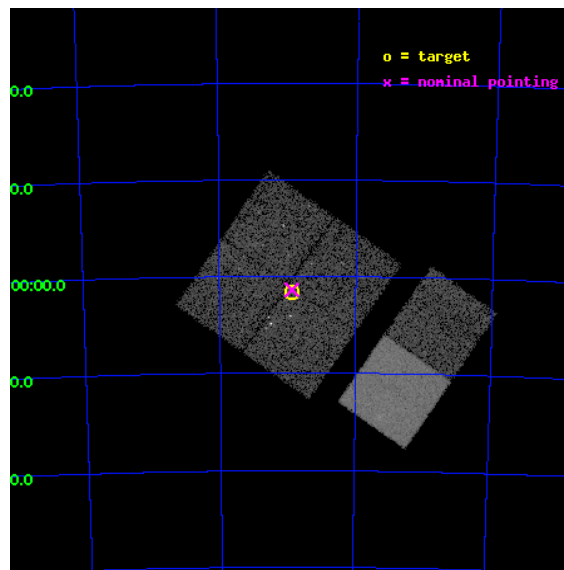
L2 Processing Date : Dec 9 2012

Contents

1	Front	2
2	OBI	3
2.1	OBI	3
2.1.1	Images	3
2.1.2	Bias	3
2.1.3	Parameters	4
2.1.4	Events	4
2.2	Compared Parameters	5
2.3	Aspect	6
2.4	Star Slots	9
2.4.1	Slot 3	9
2.4.2	Slot 4	10
2.4.3	Slot 5	11
2.4.4	Slot 6	12
2.4.5	Slot 7	13
2.5	FID Slots	14
2.5.1	Slot 0	14
2.5.2	Slot 1	15
2.5.3	Slot 2	16
A	Summary	17
A.1	Status	17
A.2	Comments	17

1 Front

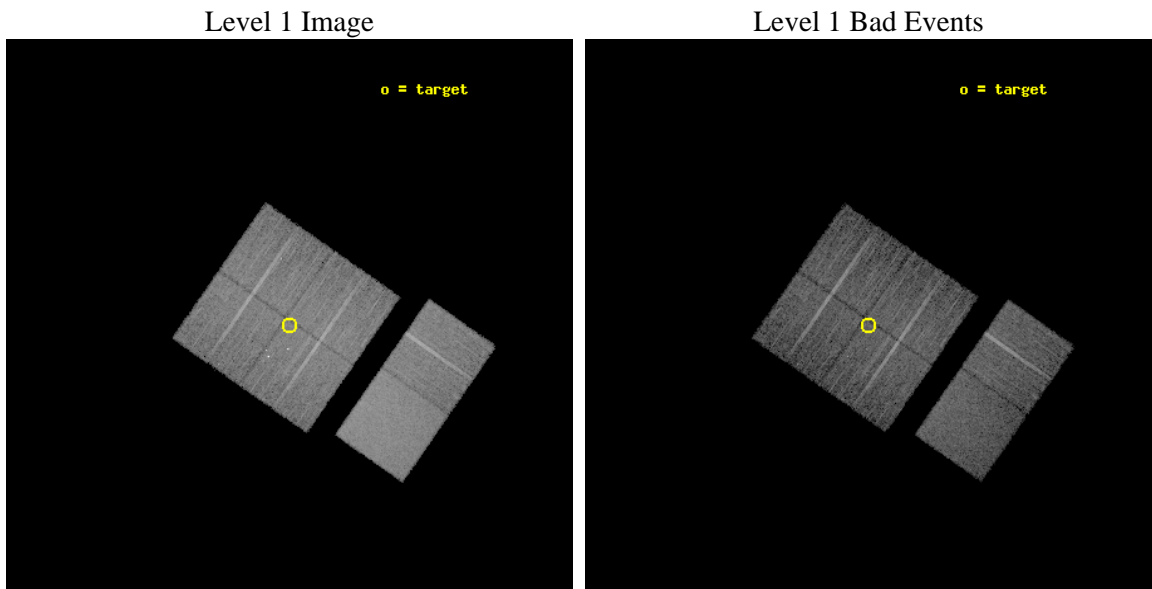
seq_num	200260	Sequence number
obs_id	4491	Observation id
title	Planet formation and the missing 10 Myr old stars	Proposal title
observer	Prof. Eric Feigelson	Principal investigator
object	eta Cha	Source name
dtcycle	0	
cycle	P	events from which exps? Prim/Second/Both
ra_targ	130.591667	Observer's specified target RA [deg]
dec_targ	-79.027222	Observer's specified target Dec [deg]
ra_nom	130.58669932071	Nominal RA [deg]
dec_nom	-79.022698691864	Nominal Dec [deg]
roll_nom	124.86401776228	Nominal Roll [deg]
revision	3	Processing version of data
ontime	10118.399962306	Sum of GTIs [s]
livetime	9990.2746894143	Livetime [s]
ontime0	10118.399962306	Sum of GTIs [s]
ontime1	10118.399962306	Sum of GTIs [s]
ontime2	10118.399962306	Sum of GTIs [s]
ontime3	10118.399962306	Sum of GTIs [s]
ontime6	10118.399962306	Sum of GTIs [s]
ontime7	10118.399962306	Sum of GTIs [s]
l2events	83071	Number of level 2 events



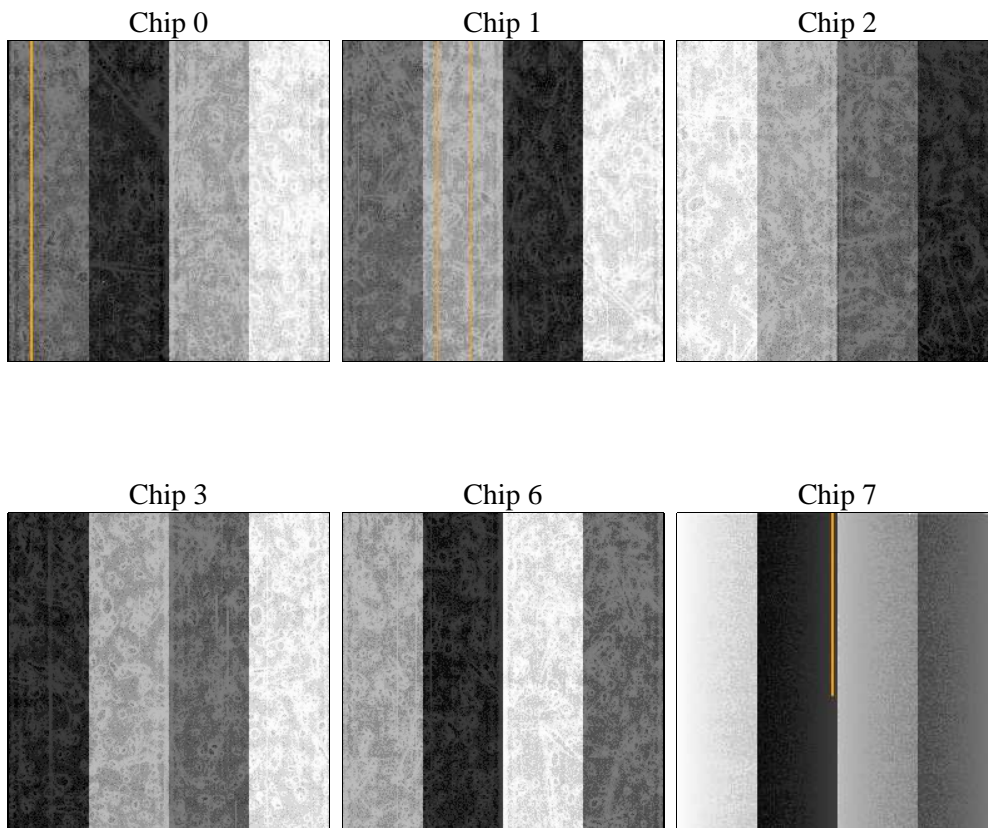
2 OBI

2.1 OBI

2.1.1 Images



2.1.2 Bias



2.1.3 Parameters

obi_num	0	Obi number	sched_exp_time	10000.000000	[s] Scheduled observation exposure time
ascdsver	8.5	Processing system revision	ontime	10118.399962306	Sum of GTIs [s]
caldbver	4.5.4	 	ontime0	10118.399962306	Sum of GTIs [s]
date	2012-12-09T07:18:24	Date and time of file creation	ontime1	10118.399962306	Sum of GTIs [s]
revision	3	Processing version of data	ontime2	10118.399962306	Sum of GTIs [s]
			ontime3	10118.399962306	Sum of GTIs [s]
			ontime6	10118.399962306	Sum of GTIs [s]
			ontime7	10118.399962306	Sum of GTIs [s]
			l1events	537124	Number of level 1 events

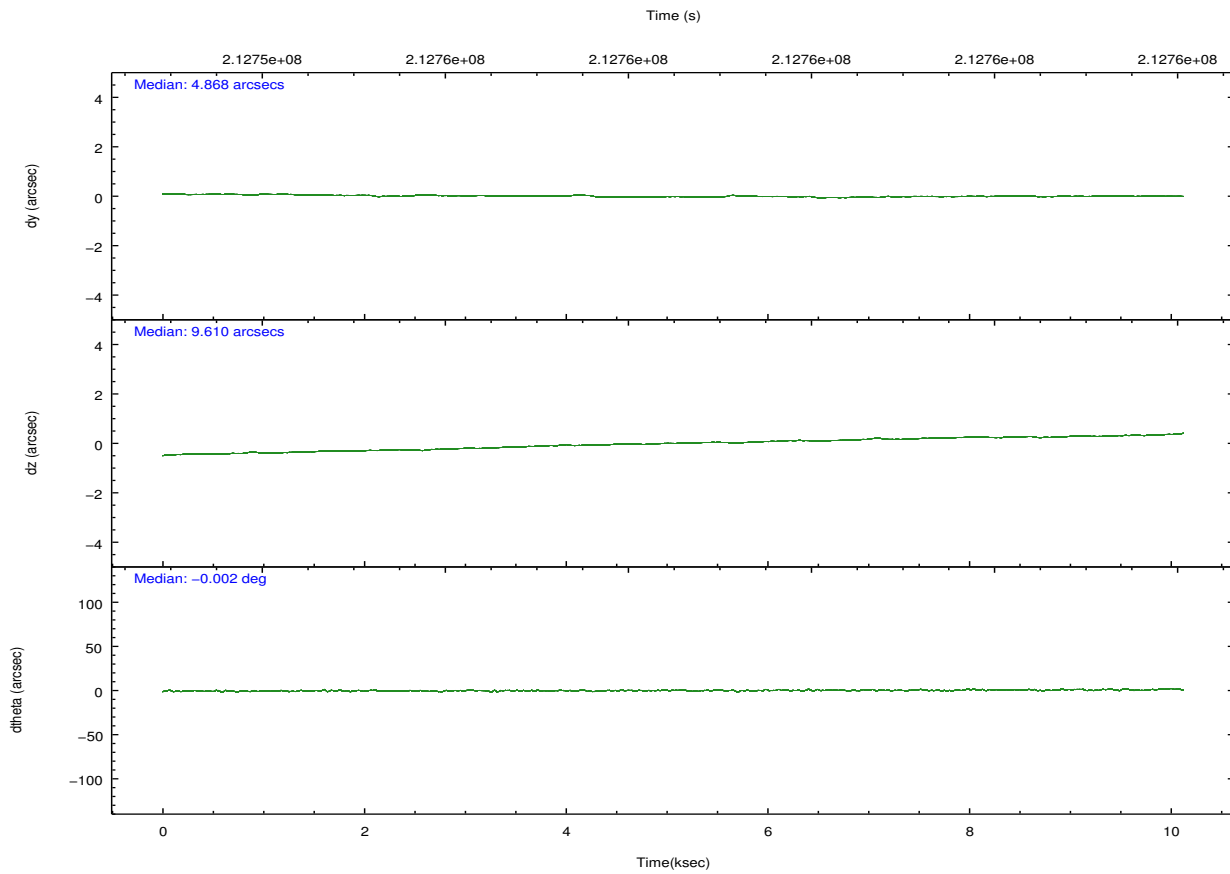
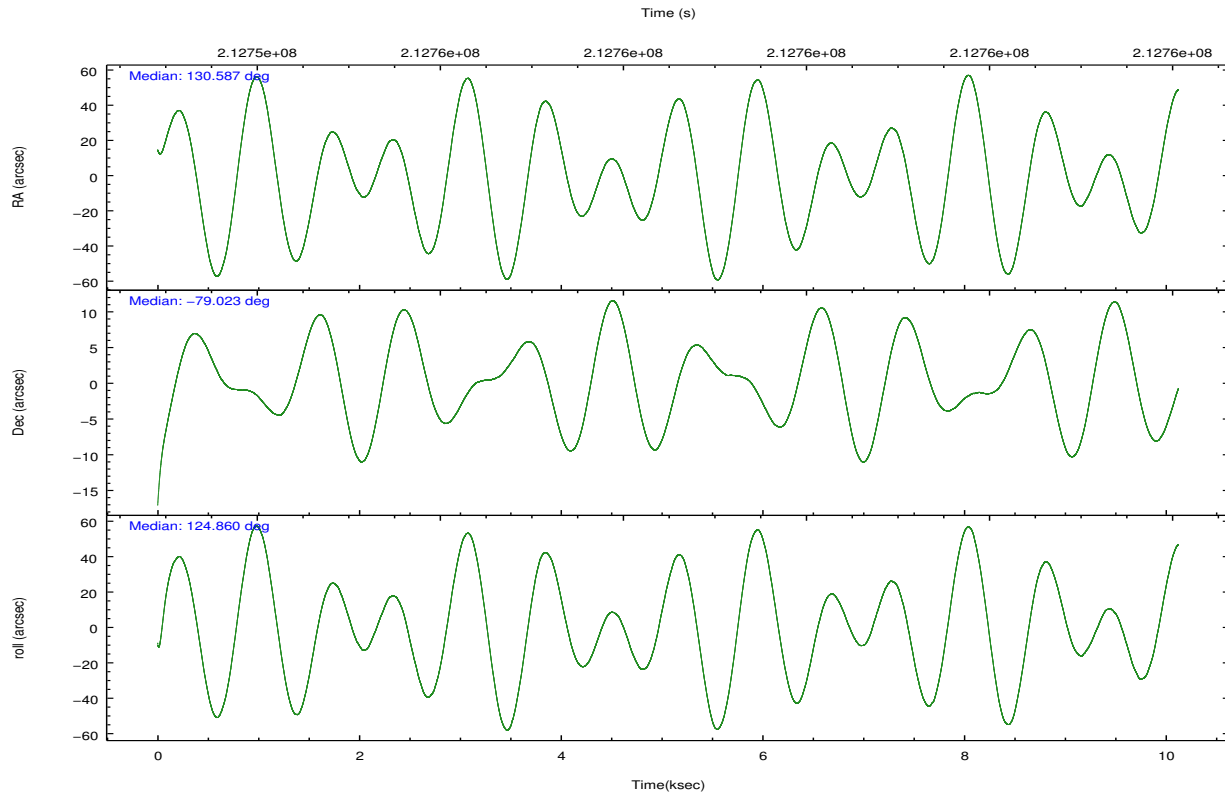
2.1.4 Events

	ccd 0	ccd 1	ccd 2	ccd 3	ccd 6	ccd 7		ccd 0	ccd 1	ccd 2	ccd 3	ccd 6	ccd 7
level 1 events	81017	77693	87071	85988	89529	115826	grade 0 events	4513	4113	4527	6820	3872	4183
rejected events	71719	68262	78164	74238	80554	73700		5%	5%	5%	7%	4%	3%
rejected %	88%	87%	89%	86%	89%	63%	grade 1 events	48	26	45	161	47	110
								0%	0%	0%	0%	0%	0%
							grade 2 events	2188	2362	1999	2183	2087	9353
								2%	3%	2%	2%	2%	8%
							grade 3 events	1052	1013	943	1047	1045	4210
								1%	1%	1%	1%	1%	3%
							grade 4 events	900	1061	958	1061	1014	4128
								1%	1%	1%	1%	1%	3%
							grade 5 events	3422	3640	3266	3861	4185	11128
								4%	4%	3%	4%	4%	9%
							grade 6 events	1794	2096	1645	1810	2062	25640
								2%	2%	1%	2%	2%	22%
							grade 7 events	67100	63382	73688	69045	75217	57074
								82%	81%	84%	80%	84%	49%

2.2 Compared Parameters

Parameter	Planned	Actual	Parameter	Planned	Actual
Instrument	ACIS	ACIS	Obspar format version number	7	7
Detector	ACIS-012367	ACIS-012367	Obspar file type	PREDICTED	ACTUAL
Grating	NONE	NONE	Obspar update status	NONE	UPDATED
Data mode	FAINT	FAINT	Number of optional ACIS chips dropped	0	0
Observation mode	POINTING	POINTING	On-chip summing requested	N	N
[deg] Pointing RA	130.717197	130.5866993207071	Subarray requested	NONE	NONE
[deg] Pointing Dec	-79.034192	-79.02269869186426	Alternating exposures requested	N	N
[deg] Pointing Roll	124.783472	124.8640177622799	[s] Primary exposure time	0.000000	3.2
[mm] SIM focus pos	-0.782348	-0.7809083437167272			
[mm] SIM defocus	0	0.001439871863259334			
[mm] SIM translation stage pos	-233.592463	-233.5874344608287			
[mm] SIM translation stage offset	0	-0.005018542100998502			
[s] Observation start time (MET)	212753545.184000	212751860.75776			
Observation start date	2004-09-28T10:11:21	2004-09-28T09:44:20			
[s] Observation end time (MET)	212763545.184000	212764082.34581			
Observation end date	2004-09-28T12:58:01	2004-09-28T13:08:02			
Read mode	TIMED	TIMED			

2.3 Aspect

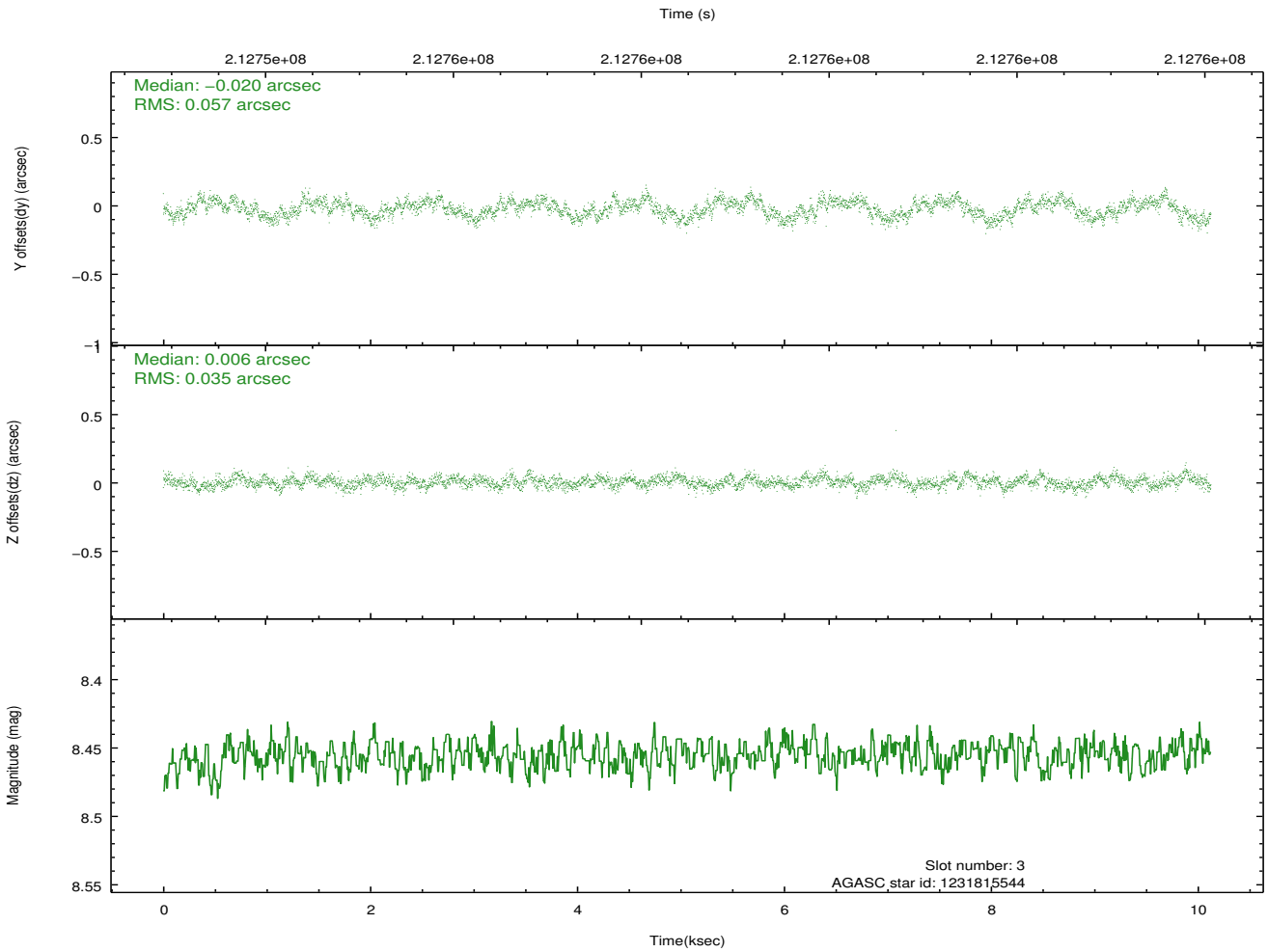
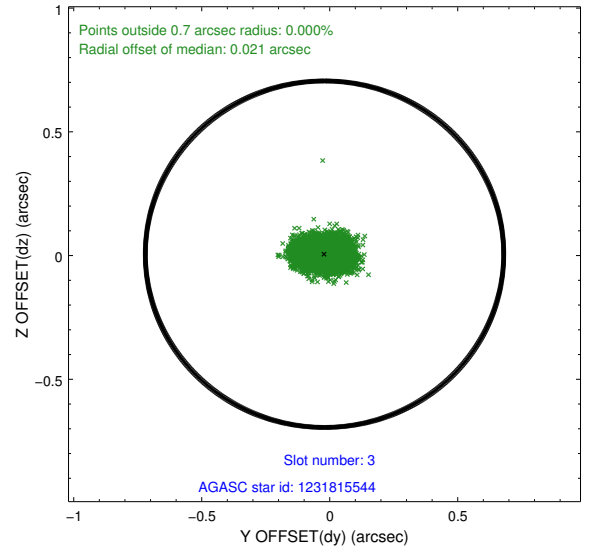
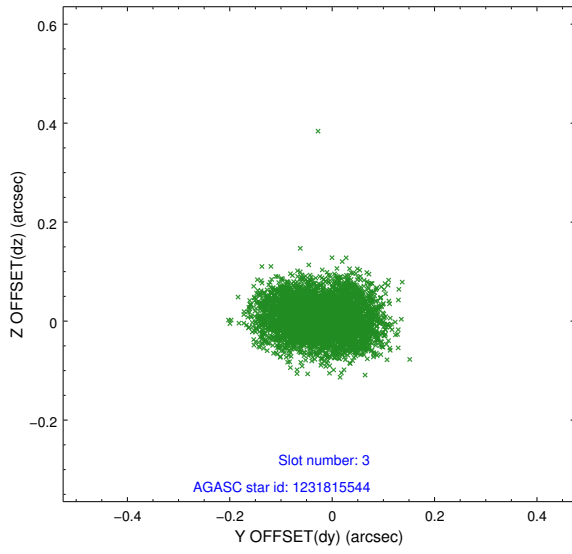


Slot Statistics

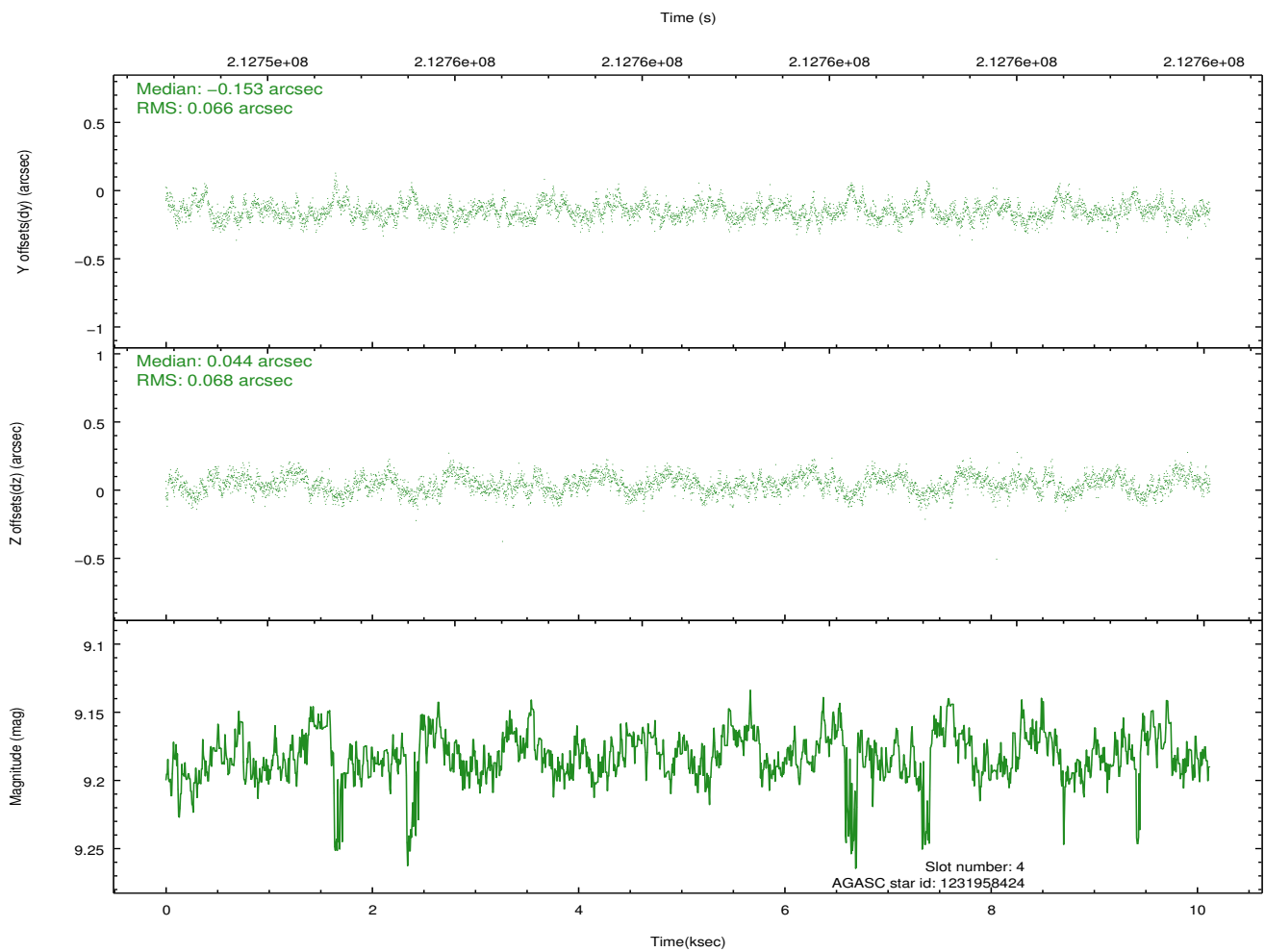
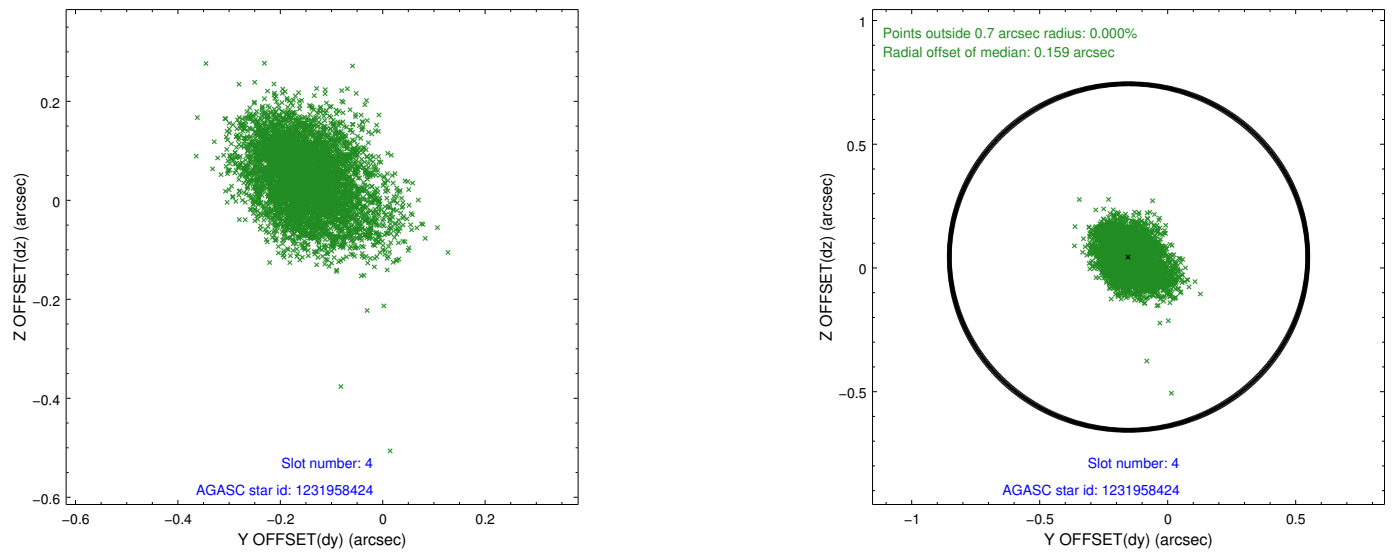
slot	status	id	mag	n_pts	med_dy	med_dz	dr1	dr2	ra	dec	mean_y	mean_z
0	FID	ACIS-I-1	7.24	2470	0.009	0.029	0.012	0.020	0.000000	0.000000	934.88	-833.01
1	FID	ACIS-I-5	7.22	2470	-0.169	0.031	0.007	0.012	0.000000	0.000000	-1813.13	1064.20
2	FID	ACIS-I-6	7.25	2470	0.068	0.010	0.013	0.022	0.000000	0.000000	399.90	1709.29
3	GUIDE	1231815544	8.46	4939	-0.020	0.006	0.072	0.115	127.722617	-78.704866	2133.87	1088.34
4	GUIDE	1231958424	9.18	4929	-0.153	0.044	0.099	0.164	132.573445	-78.483269	851.58	-2214.46
5	GUIDE	1232483360	8.20	4939	0.013	0.016	0.062	0.102	130.079659	-79.674033	-1659.15	1652.49
6	GUIDE	1231817112	9.50	4936	0.074	0.044	0.110	0.176	127.625827	-78.657948	2313.10	1057.93
7	GUIDE	1232471888	8.66	4938	0.086	-0.101	0.092	0.142	134.188873	-78.796681	-740.31	-2439.55

2.4 Star Slots

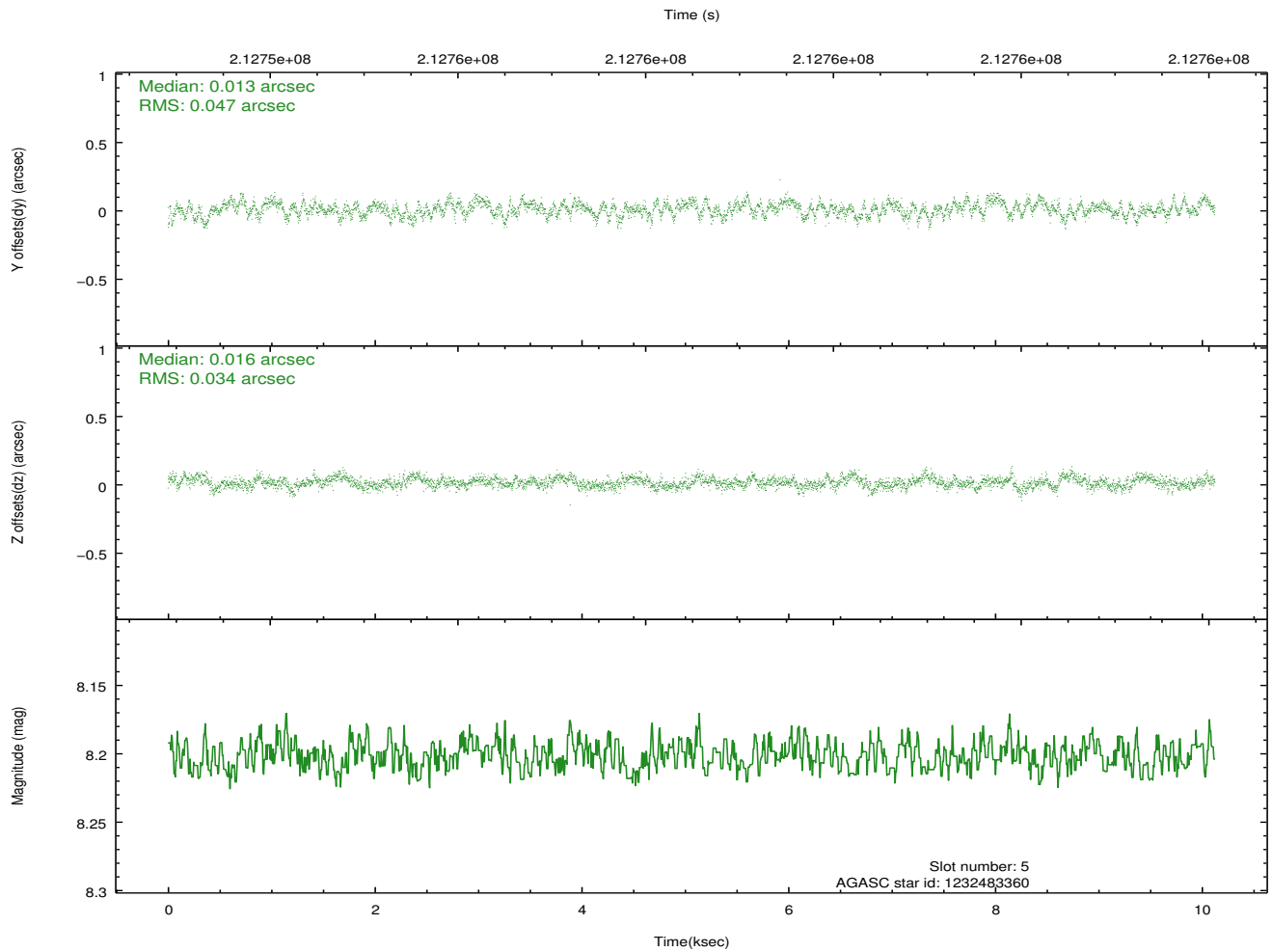
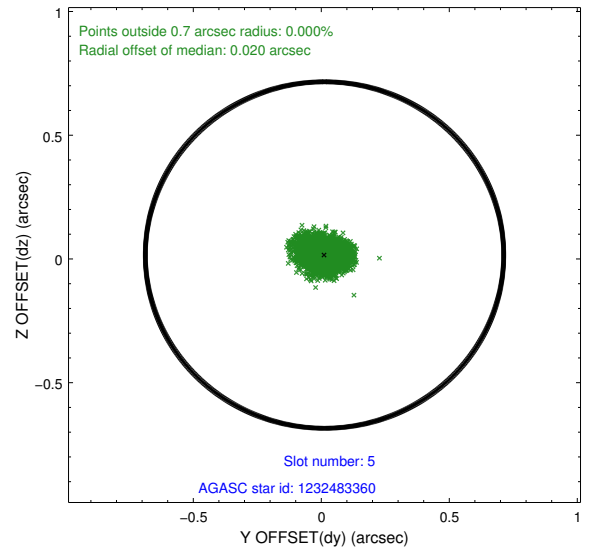
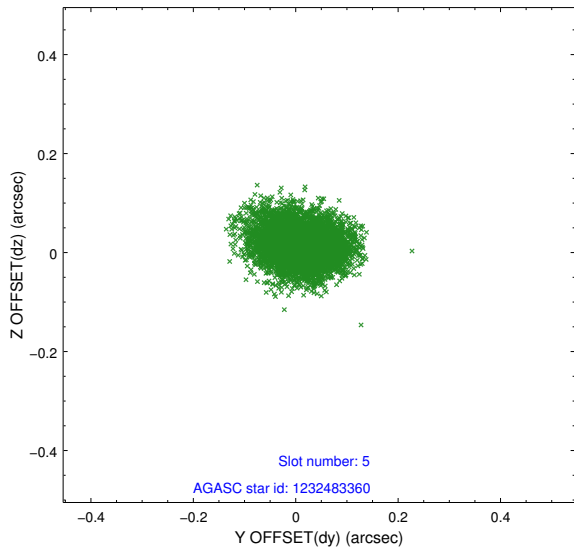
2.4.1 Slot 3



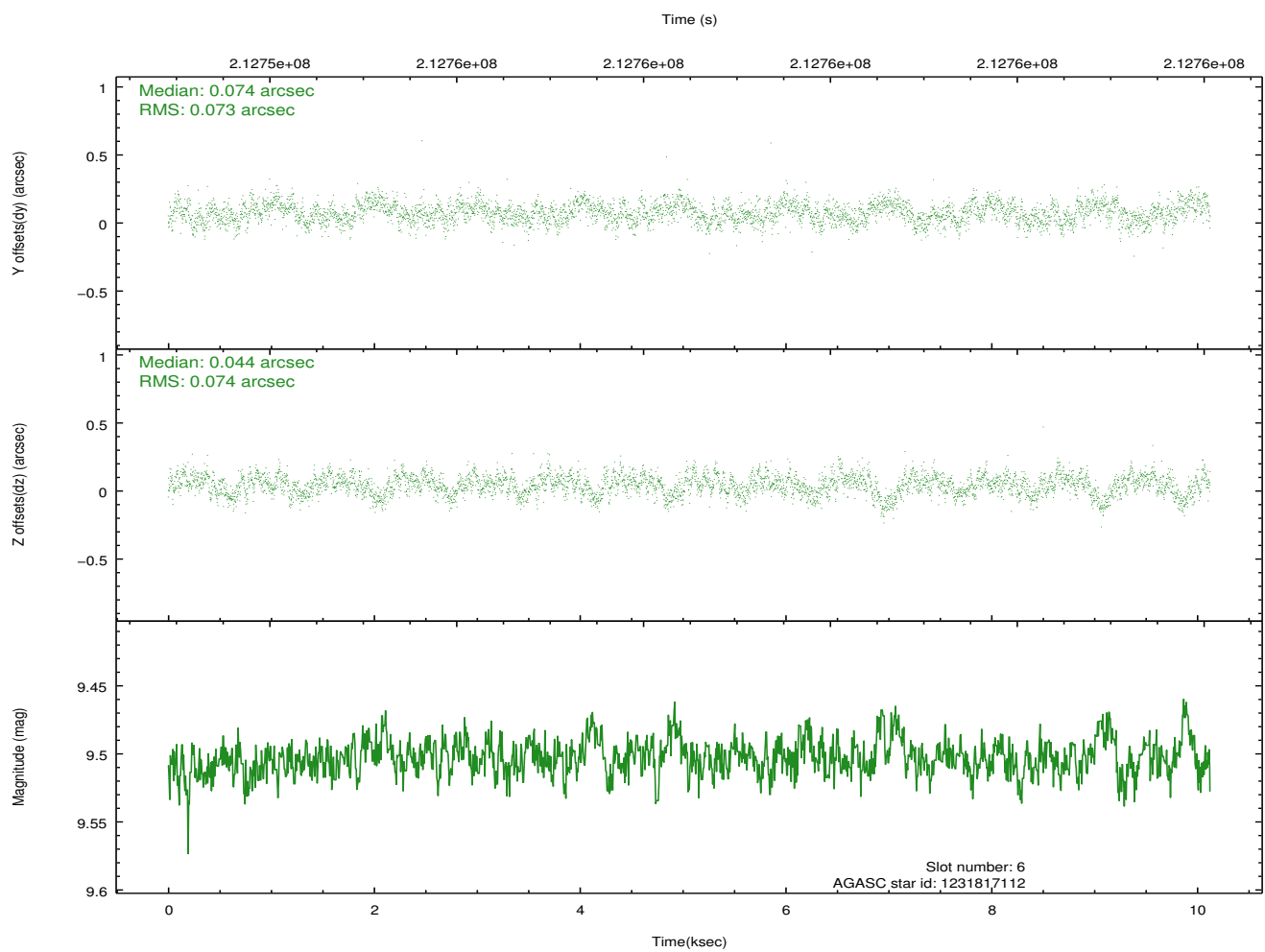
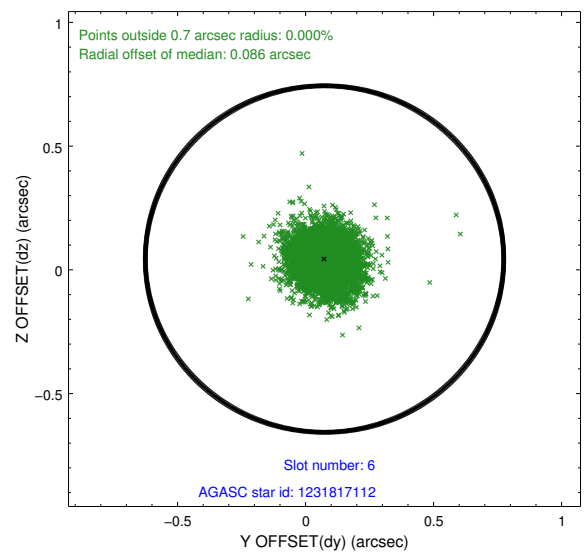
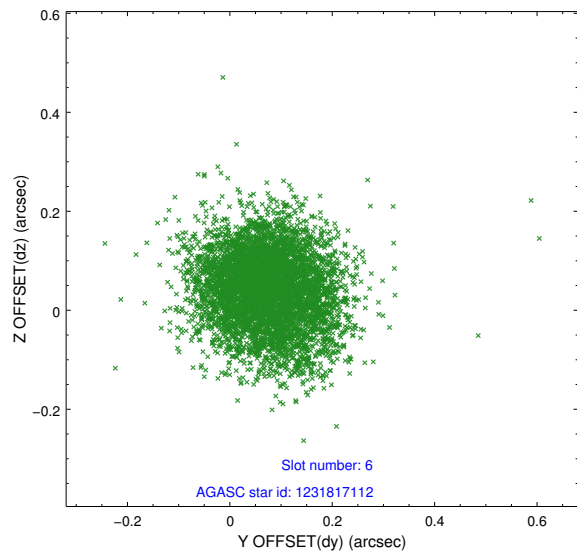
2.4.2 Slot 4



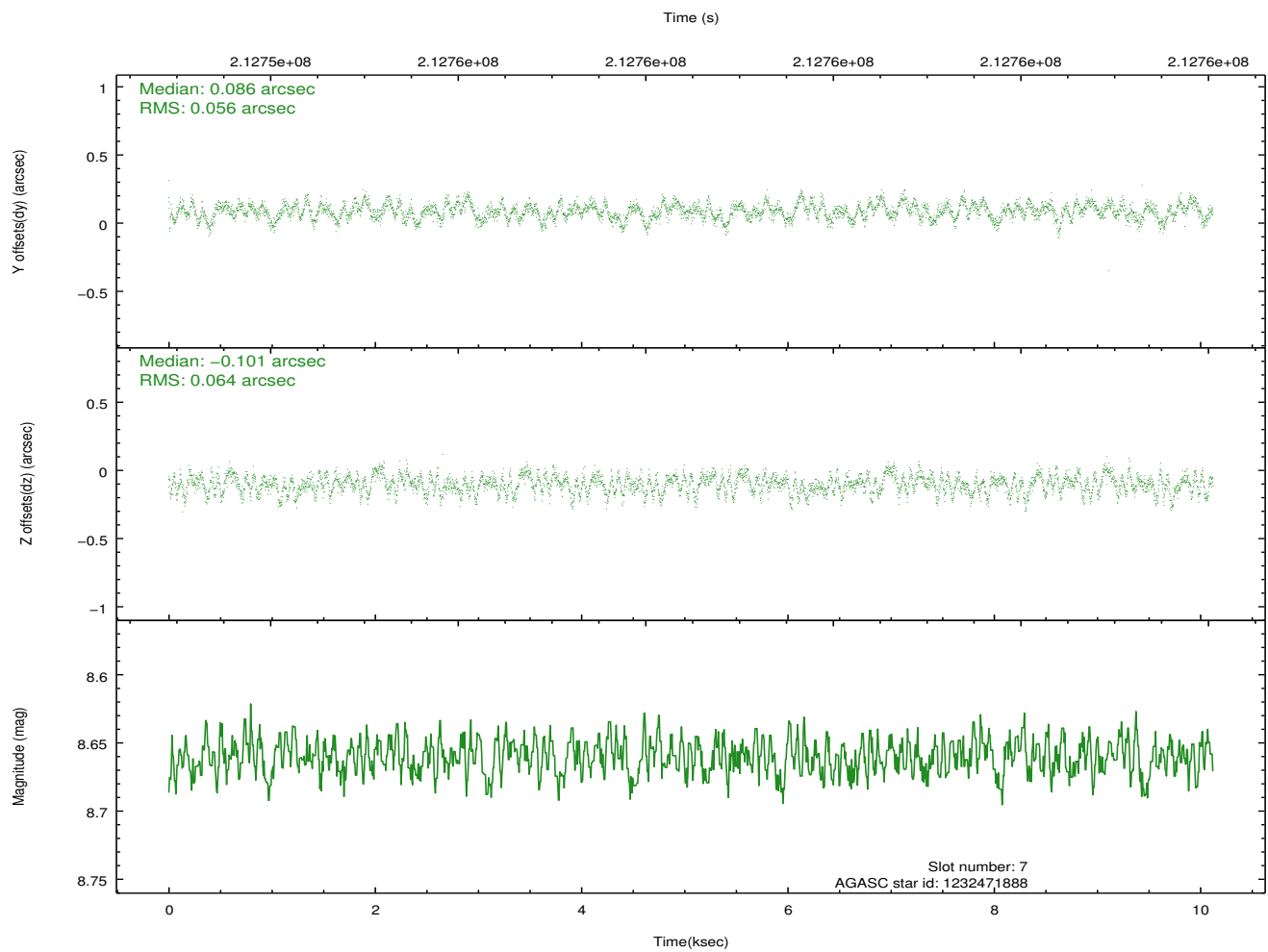
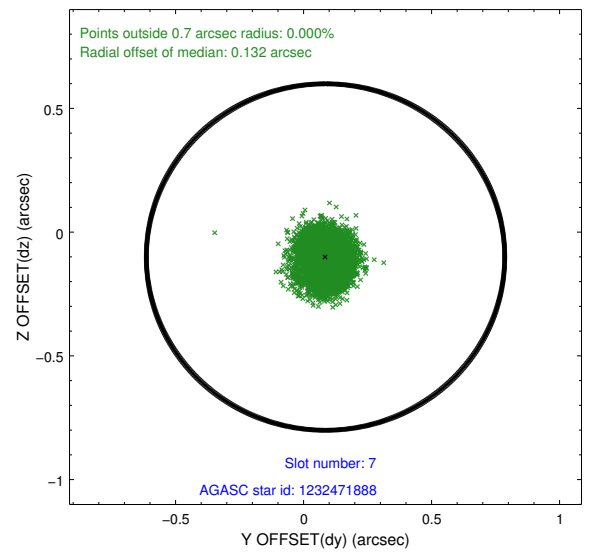
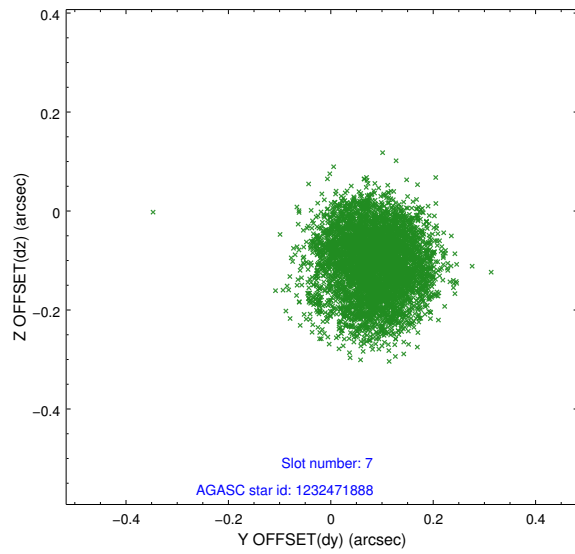
2.4.3 Slot 5



2.4.4 Slot 6

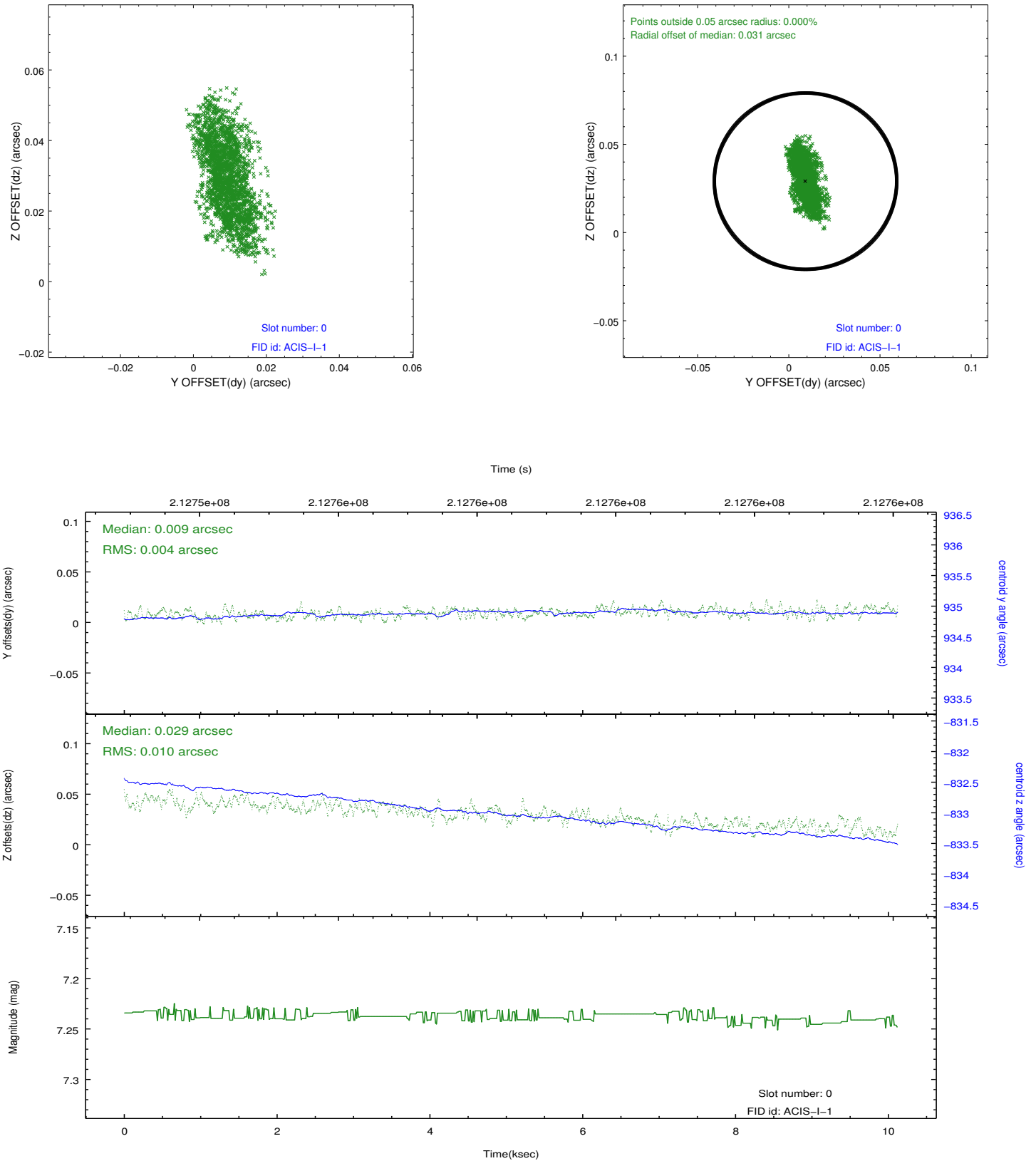


2.4.5 Slot 7

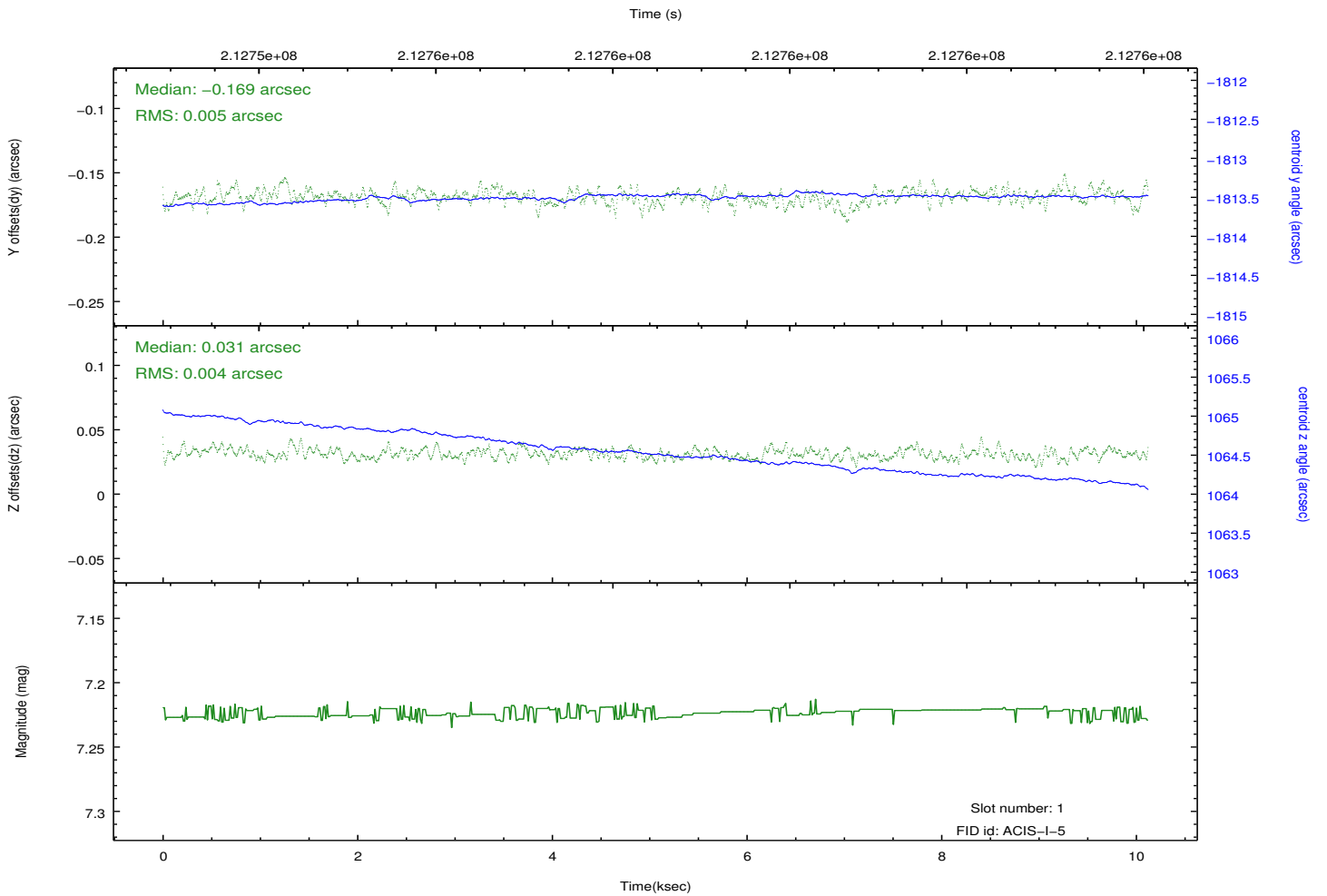
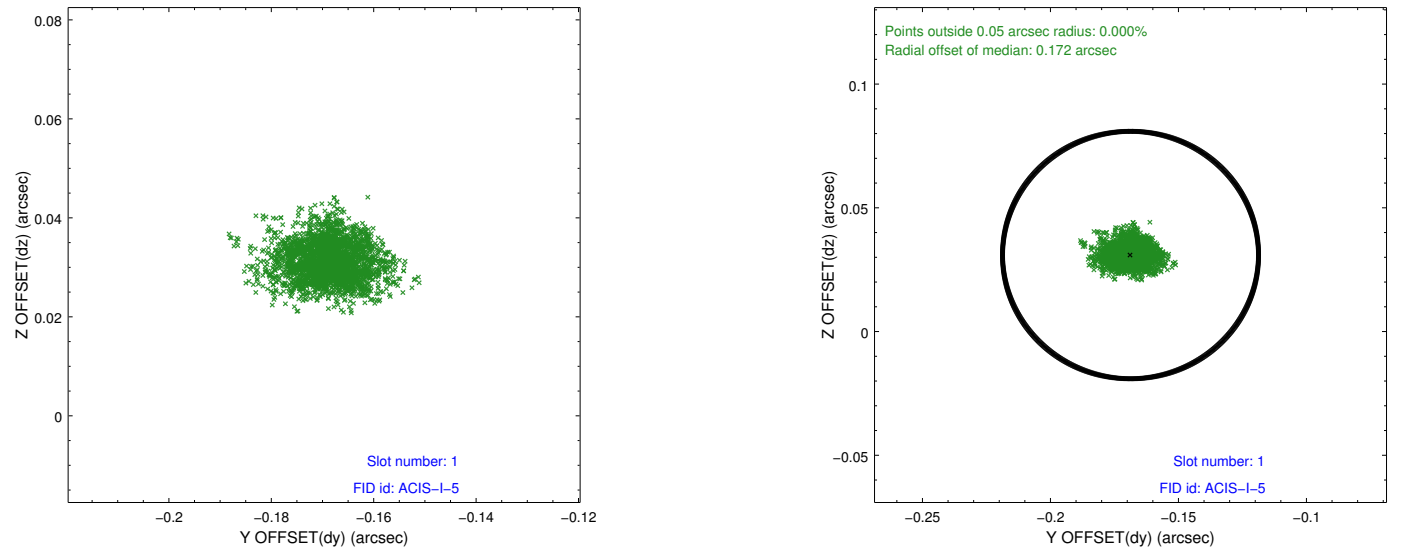


2.5 FID Slots

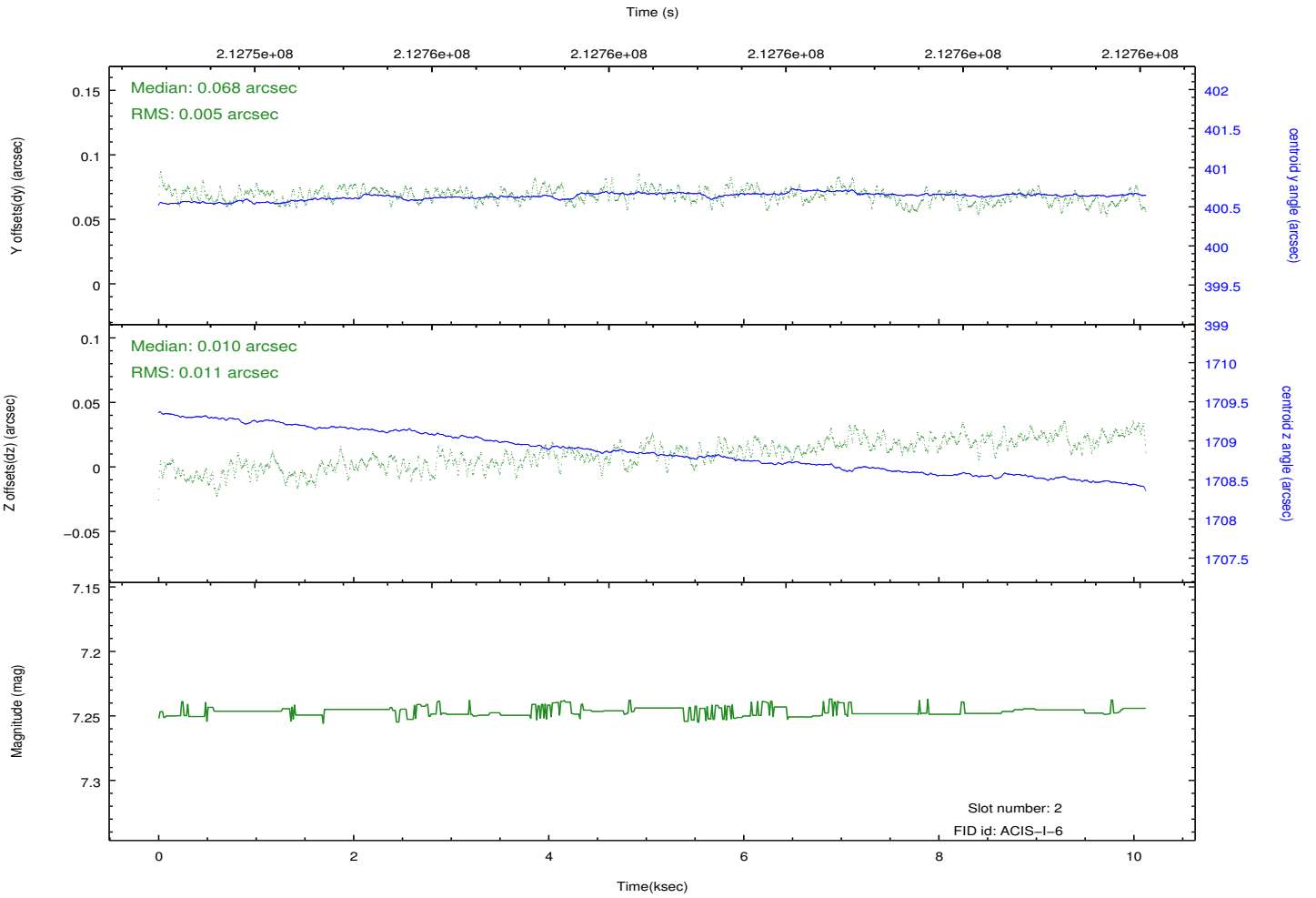
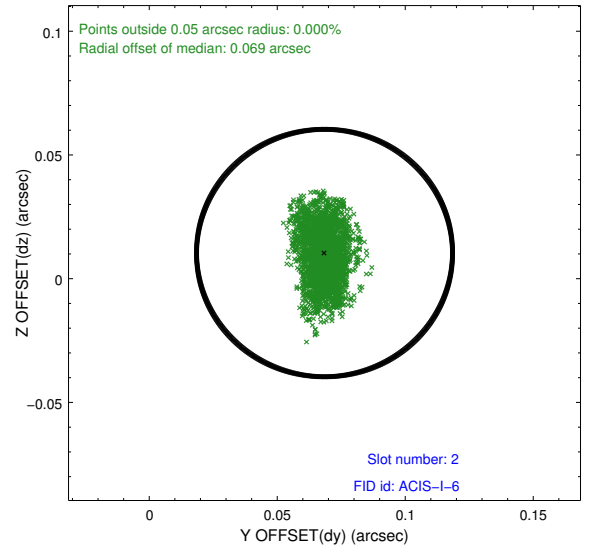
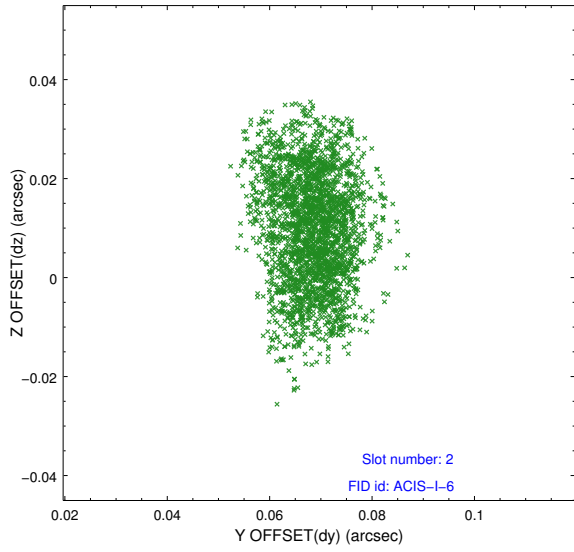
2.5.1 Slot 0



2.5.2 Slot 1



2.5.3 Slot 2



A Summary

A.1 Status

V&V Scientist	Beth Sundheim
V&V Date (YYYY-MM-DD)	2013.01.02
V&V Edition	1
V&V Disposition and Status	OK
V&V Charge Time	10.118

A.2 Comments