

V&V Reference Report

L2 ASCDS Version : 8.4.5

Observation 4561 - L2 Version 3
Chandra X-Ray Center

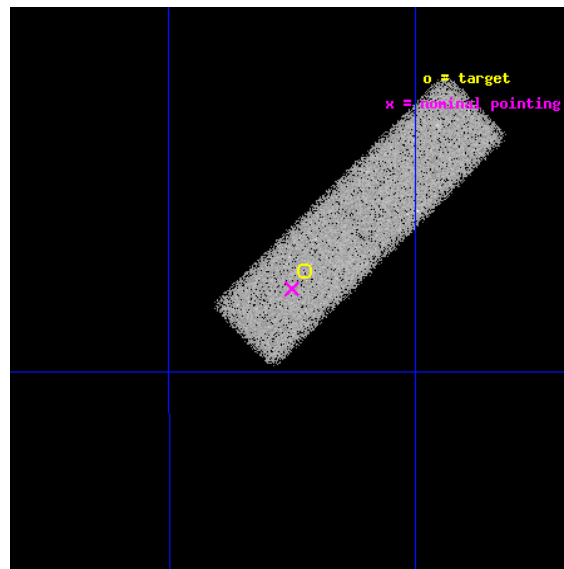
L2 Processing Date : Dec 3 2012

Contents

1	Front	2
2	OBI	3
2.1	OBI	3
2.1.1	Images	3
2.1.2	Bias	3
2.1.3	Parameters	4
2.1.4	Events	4
2.2	Compared Parameters	5
2.3	Aspect	6
2.4	Star Slots	9
2.4.1	Slot 3	9
2.4.2	Slot 4	10
2.4.3	Slot 5	11
2.4.4	Slot 6	12
2.4.5	Slot 7	13
2.5	FID Slots	14
2.5.1	Slot 0	14
2.5.2	Slot 1	15
2.5.3	Slot 2	16
A	Summary	17
A.1	Status	17
A.2	Comments	17

1 Front

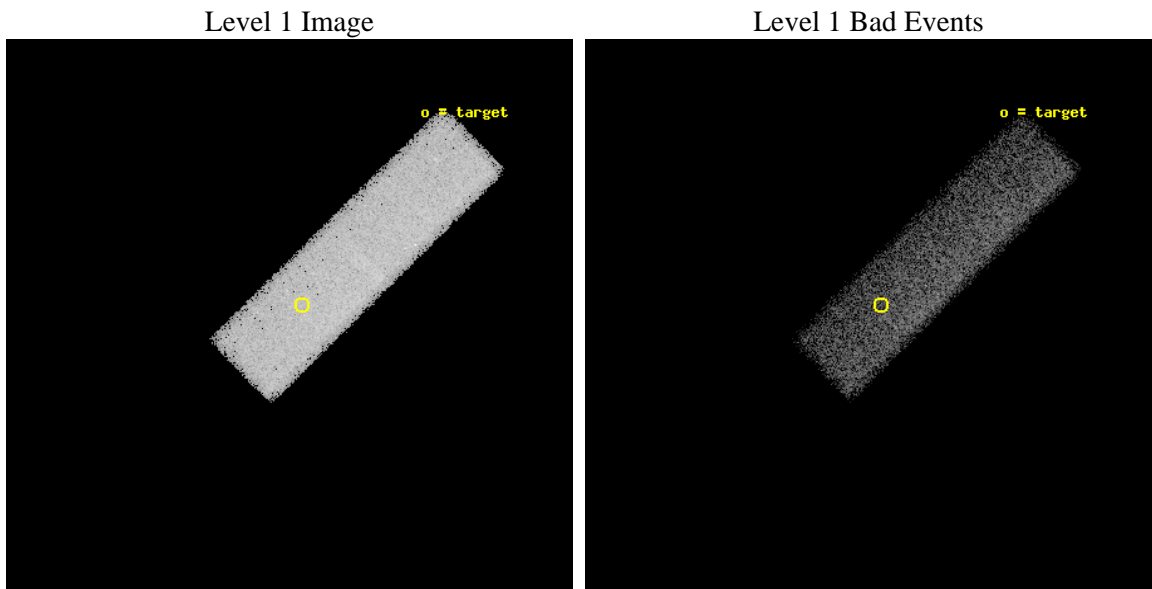
seq_num	400344	Sequence number
obs_id	4561	Observation id
title	Chandra observations of accretion-driven millisecond X-ray pulsars in quiescence	Proposal title
observer	Dr. Rudy Wijnands	Principal investigator
object	XTE J1751-305	Source name
dtcycle	0	
cycle	P	events from which exps? Prim/Second/Both
ra_targ	267.80625	Observer's specified target RA [deg]
dec_targ	-30.623167	Observer's specified target Dec [deg]
ra_nom	267.81276518997	Nominal RA [deg]
dec_nom	-30.631046464778	Nominal Dec [deg]
roll_nom	315.49858506944	Nominal Roll [deg]
revision	3	Processing version of data
ontime	45183.200673282	Sum of GTIs [s]
livetime	42978.408326151	Livetime [s]
ontime7	45183.200673282	Sum of GTIs [s]
l2events	51104	Number of level 2 events



2 OBI

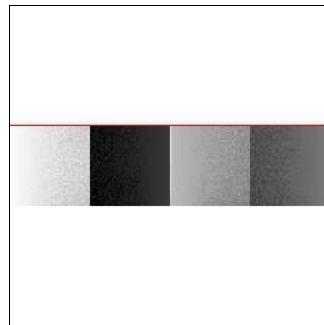
2.1 OBI

2.1.1 Images



2.1.2 Bias

Chip 7



2.1.3 Parameters

obi_num	0	Obi number	sched_exp_time	45000.000000	[s] Scheduled observation exposure time
ascdsver	8.4.5	Processing system revision	ontime	45183.200673282	Sum of GTIs [s]
caldbver	4.5.2	 	ontime7	45183.200673282	Sum of GTIs [s]
date	2012-12-03T07:15:59	Date and time of file creation	l1events	119902	Number of level 1 events
revision	3	Processing version of data			

2.1.4 Events

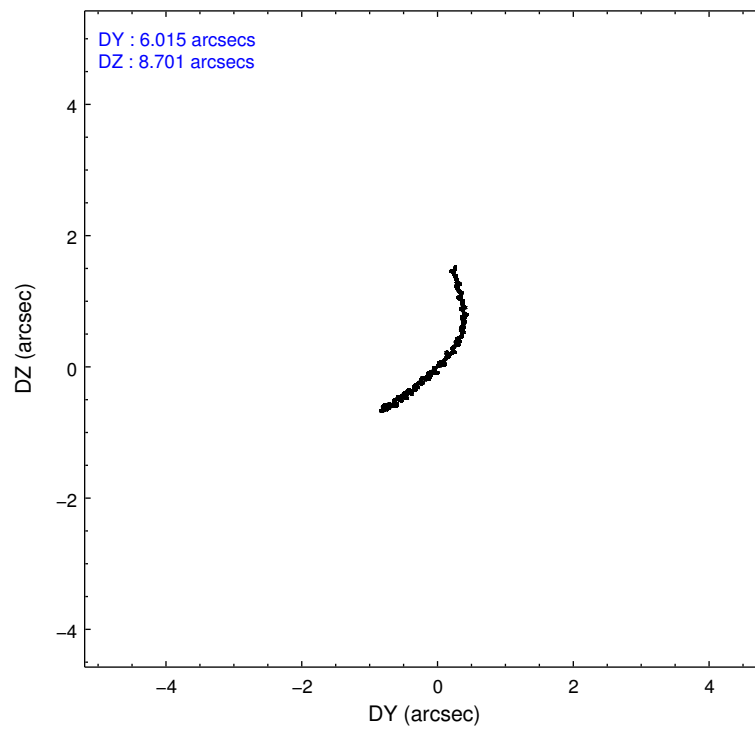
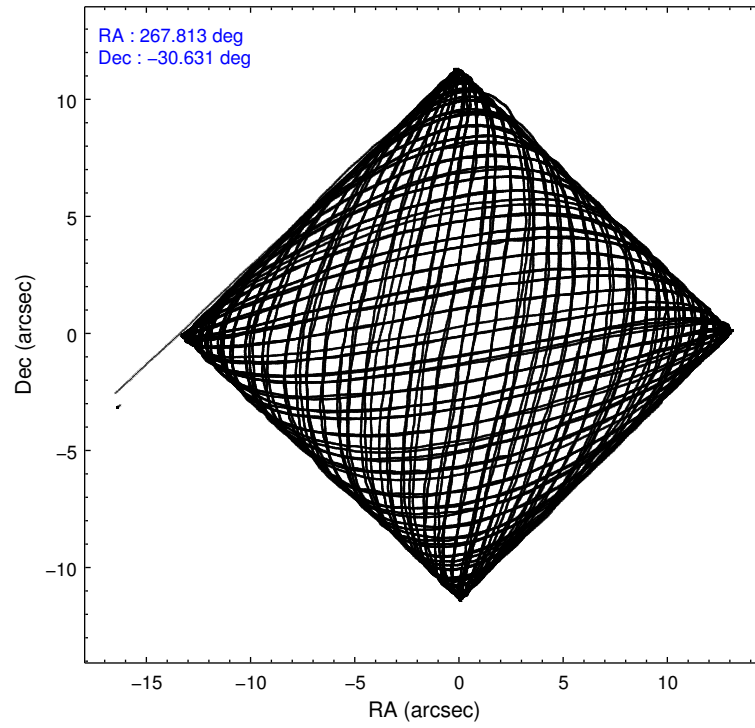
	ccd 7
level 1 events	119902
rejected events	67130
rejected %	55%

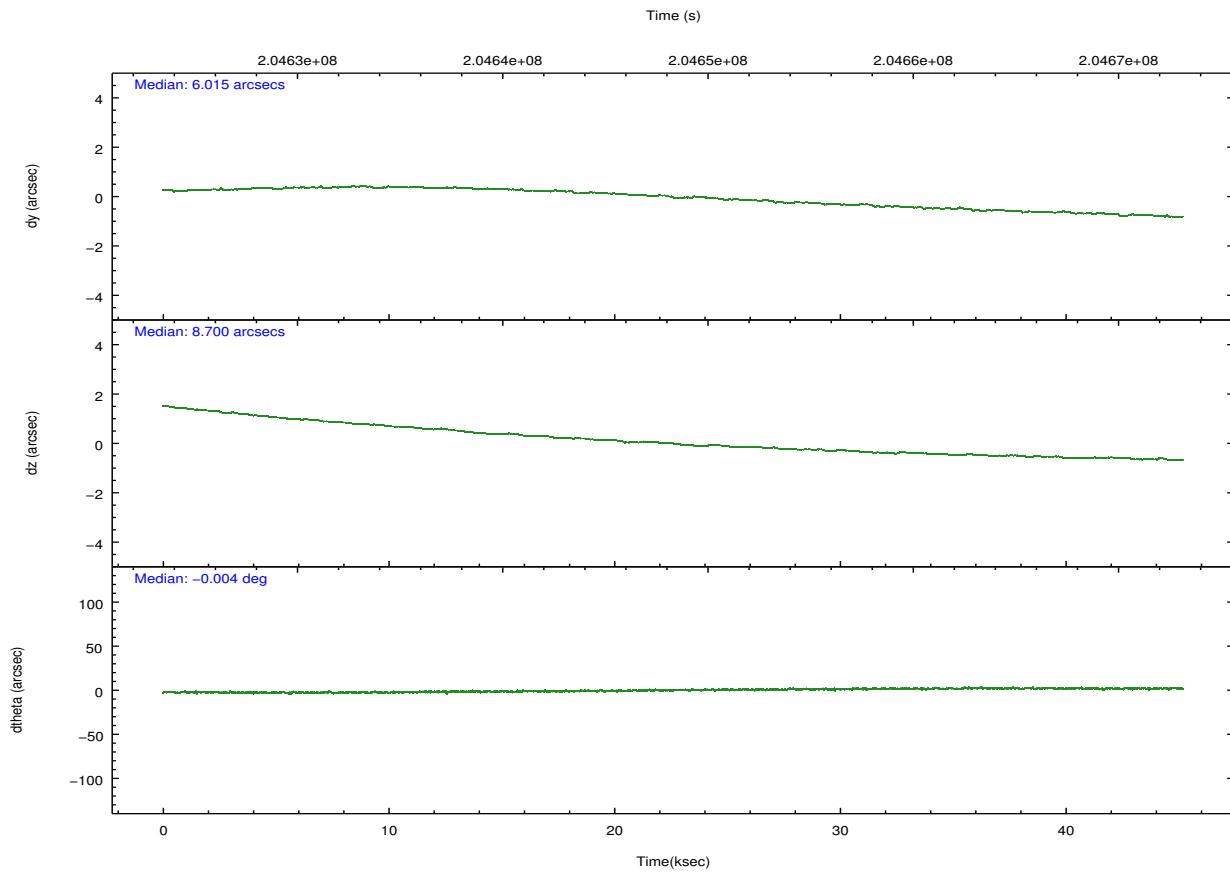
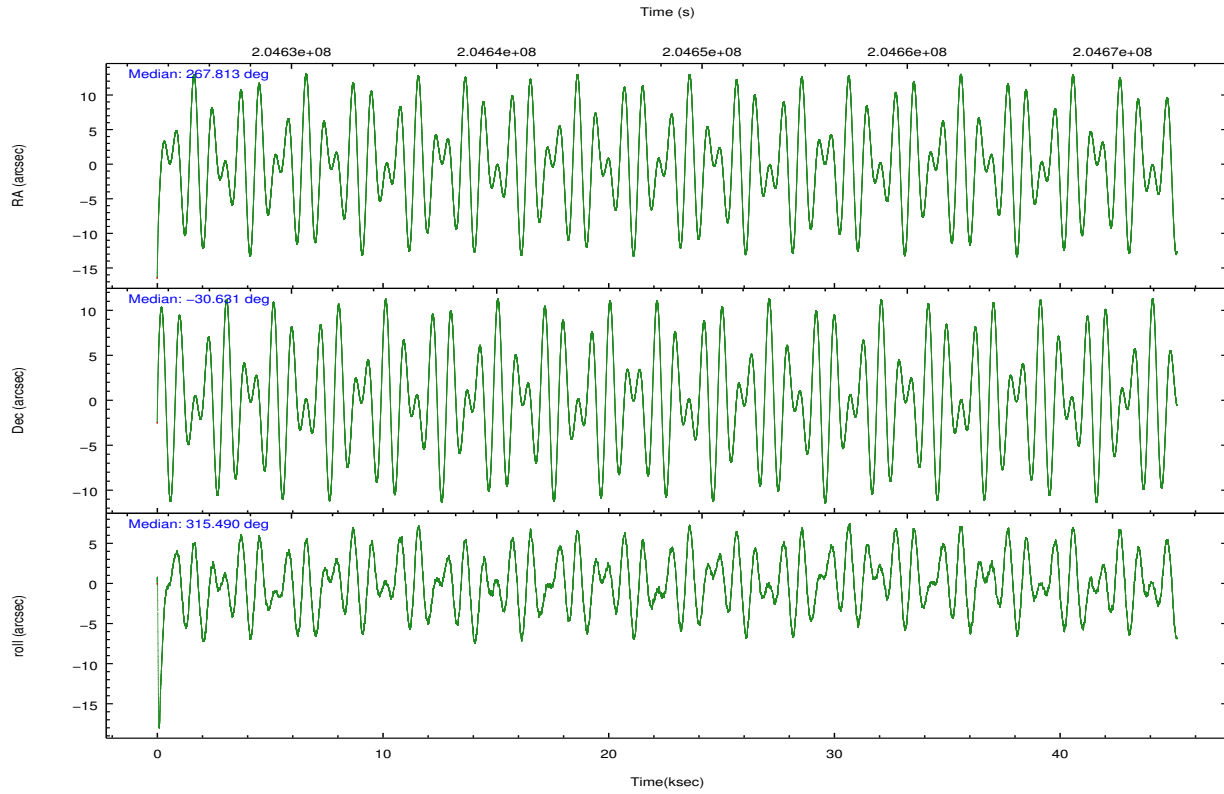
	ccd 7
grade 0 events	5734
	4%
grade 1 events	117
	0%
grade 2 events	10785
	8%
grade 3 events	6218
	5%
grade 4 events	6191
	5%
grade 5 events	11406
	9%
grade 6 events	25831
	21%
grade 7 events	53620
	44%

2.2 Compared Parameters

Parameter	Planned	Actual	Parameter	Planned	Actual
Instrument	ACIS	ACIS	Obspar format version number	7	7
Detector	ACIS-7	ACIS-7	Obspar file type	PREDICTED	ACTUAL
Grating	NONE	NONE	Obspar update status	NONE	UPDATED
Data mode	FAINT	FAINT	Number of optional ACIS chips dropped	0	0
Observation mode	POINTING	POINTING	On-chip summing requested	N	N
[deg] Pointing RA	267.782018	267.8127651899665	Subarray requested	CUSTOM	1/4
[deg] Pointing Dec	-30.624584	-30.6310464647782	Subarray start row	384	385
[deg] Pointing Roll	315.326282	315.4985850694362	Subarray row count	256	256
[mm] SIM focus pos	-0.684267	-0.6828225247311905	Alternating exposures requested	N	N
[mm] SIM defocus	0	0.001444936568705701	[s] Primary exposure time	0.000000	0.8
[mm] SIM translation stage pos	-190.132523	-190.1400660498719			
[mm] SIM translation stage offset	0	0.00754346686406393			
[s] Observation start time (MET)	204625888.184000	204623974.27108			
Observation start date	2004-06-26T08:30:24	2004-06-26T07:59:34			
[s] Observation end time (MET)	204670888.184000	204671466.62318			
Observation end date	2004-06-26T21:00:24	2004-06-26T21:11:06			
Read mode	TIMED	TIMED			

2.3 Aspect



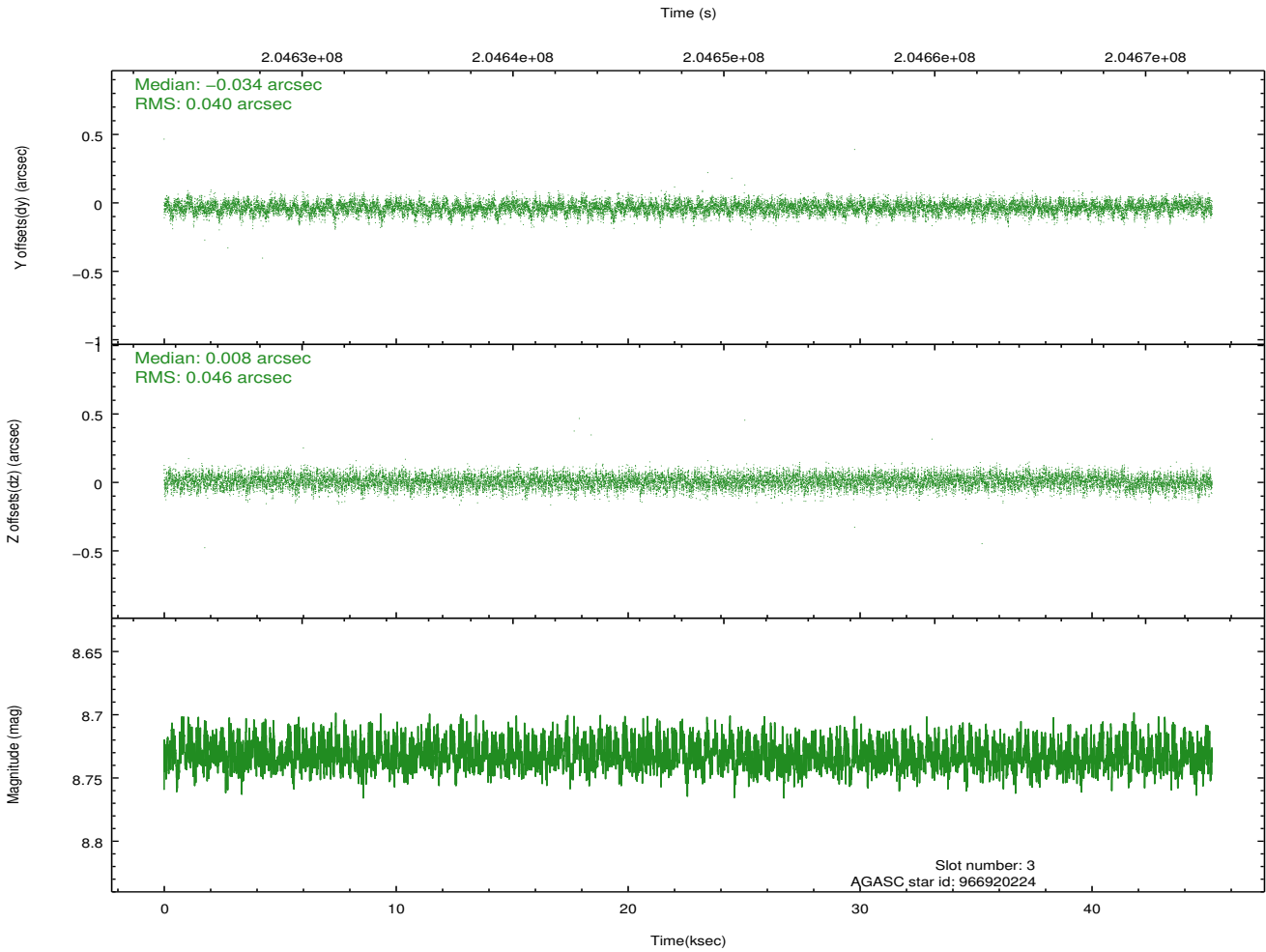
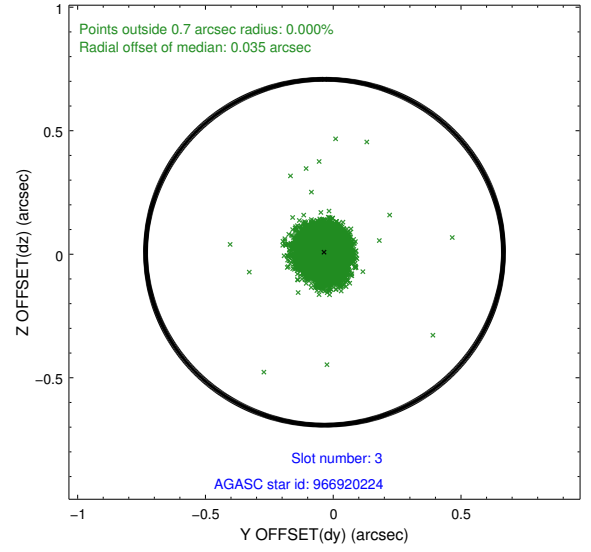
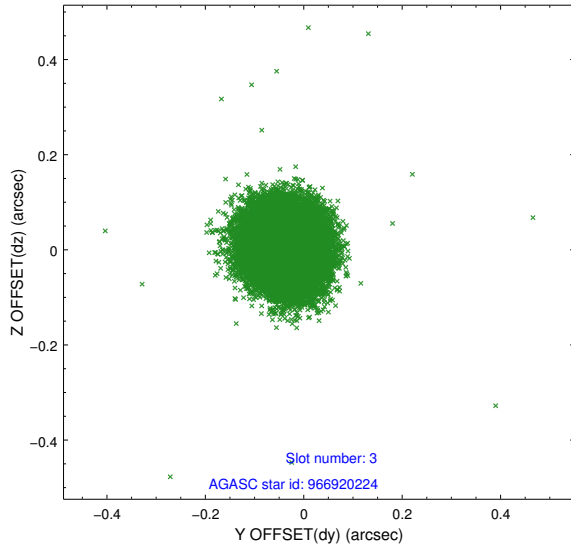


Slot Statistics

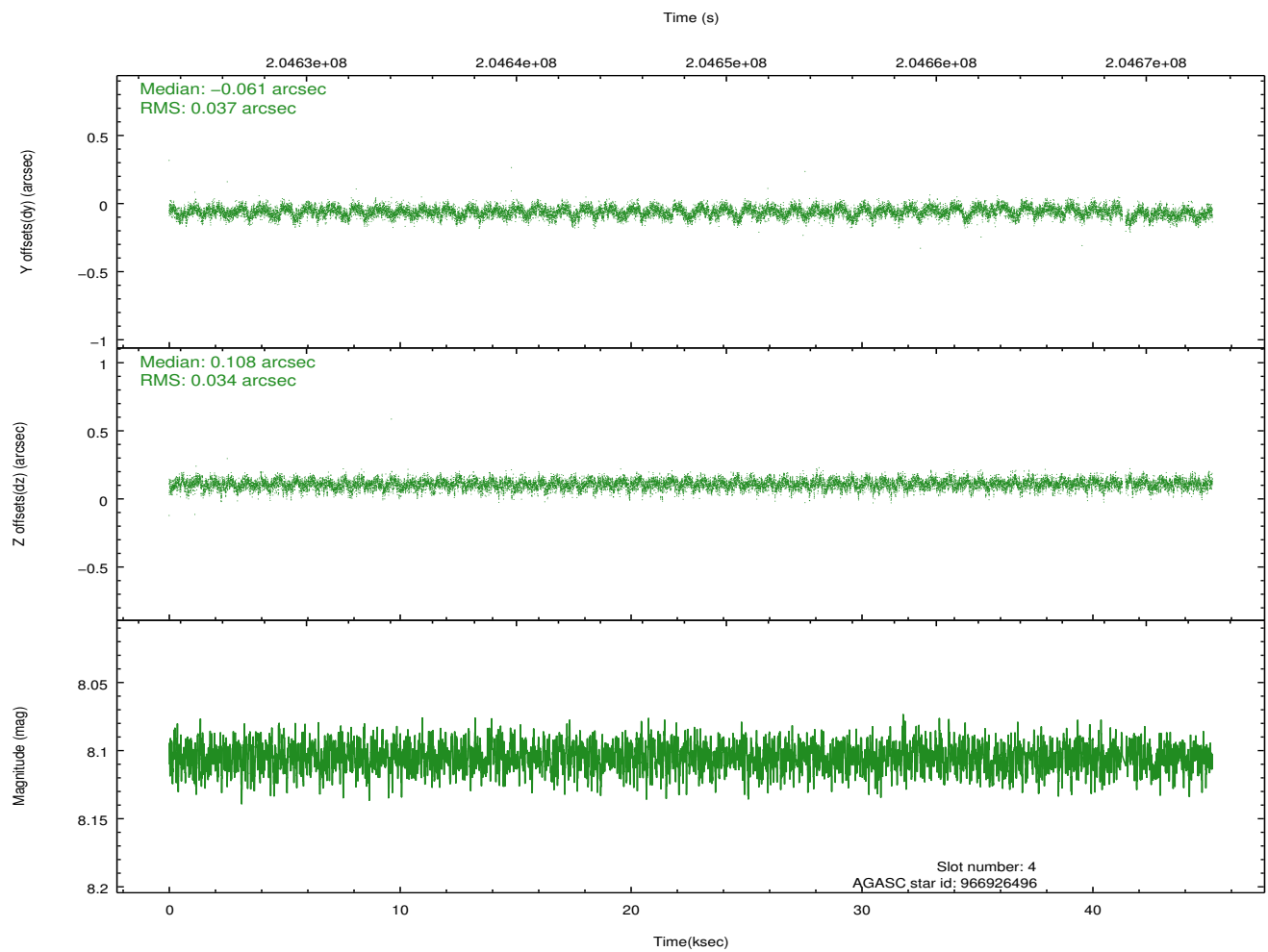
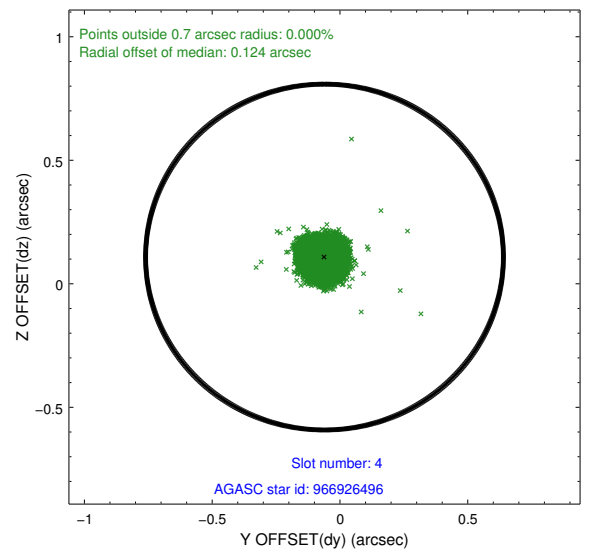
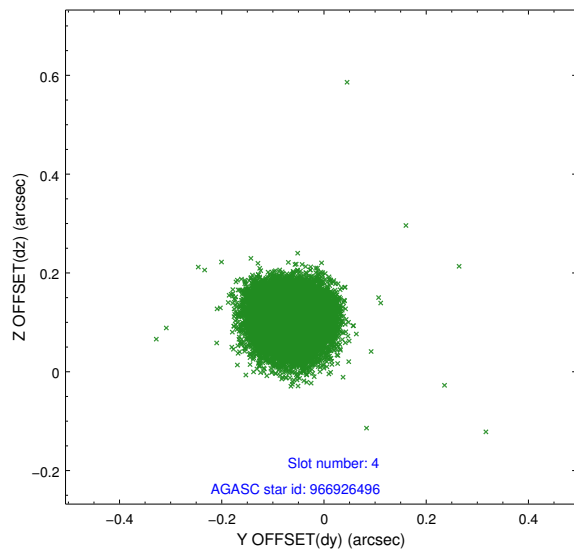
slot	status	id	mag	n_pts	med_dy	med_dz	dr1	dr2	ra	dec	mean_y	mean_z
0	FID	ACIS-S-1	7.18	11019	0.013	-0.005	0.012	0.022	0.000000	0.000000	937.34	-1725.71
1	FID	ACIS-S-2	7.10	11021	-0.087	-0.038	0.009	0.016	0.000000	0.000000	-758.66	-1730.24
2	FID	ACIS-S-4	7.20	11021	0.049	0.048	0.009	0.022	0.000000	0.000000	2154.67	178.48
3	GUIDE	966920224	8.73	22030	-0.034	0.008	0.065	0.104	267.399434	-31.055624	253.95	-1934.35
4	GUIDE	966926496	8.10	21965	-0.061	0.108	0.053	0.086	267.109389	-30.299474	-2304.98	-642.34
5	GUIDE	966918336	8.13	22035	0.077	-0.047	0.053	0.085	267.709998	-30.955430	679.75	-1003.13
6	GUIDE	967060208	8.58	22036	0.069	0.091	0.081	0.131	267.770250	-30.970101	849.23	-909.71
7	GUIDE	967053960	9.26	22018	-0.051	-0.160	0.100	0.155	268.185736	-30.091336	-453.91	2247.60

2.4 Star Slots

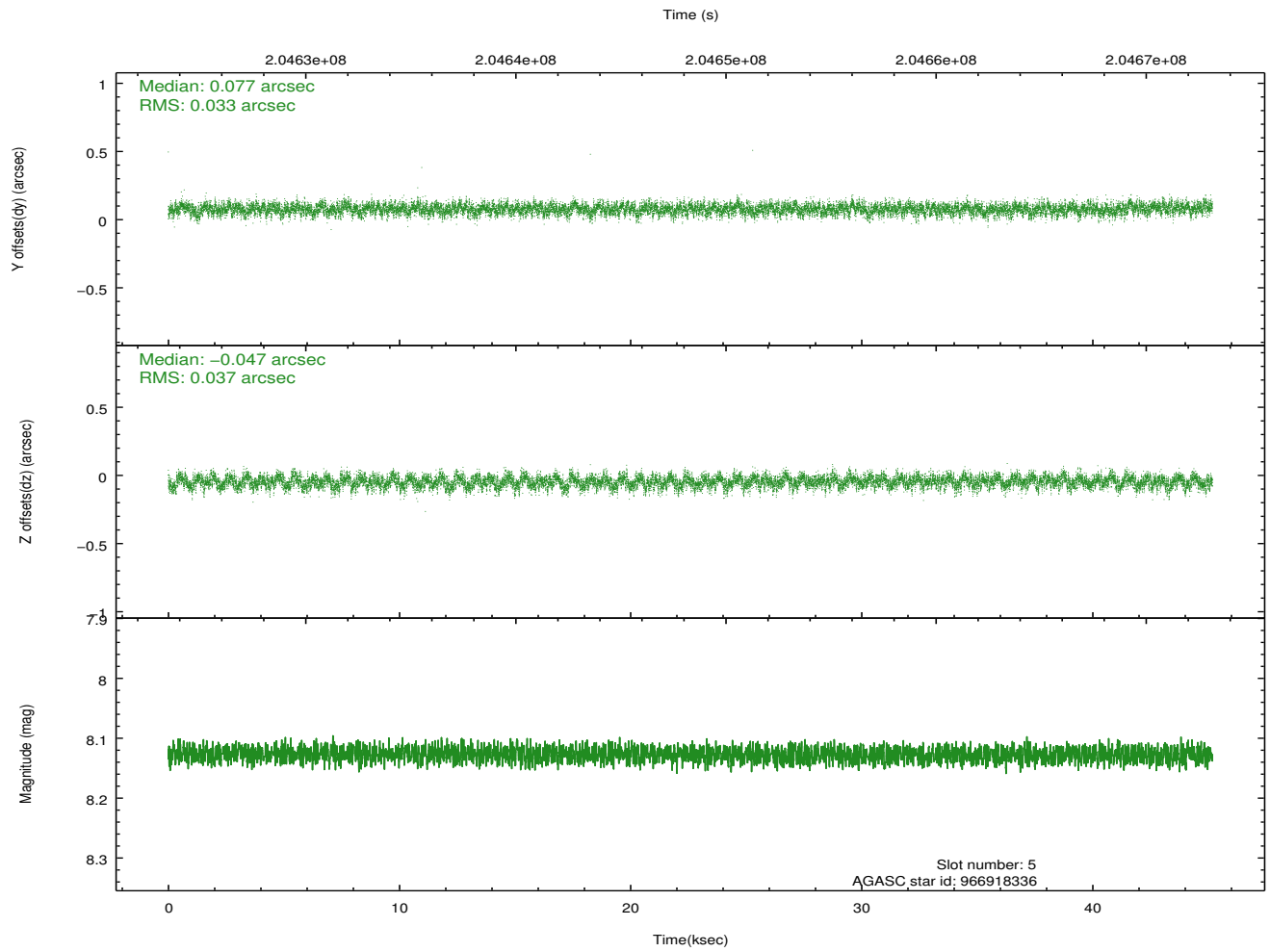
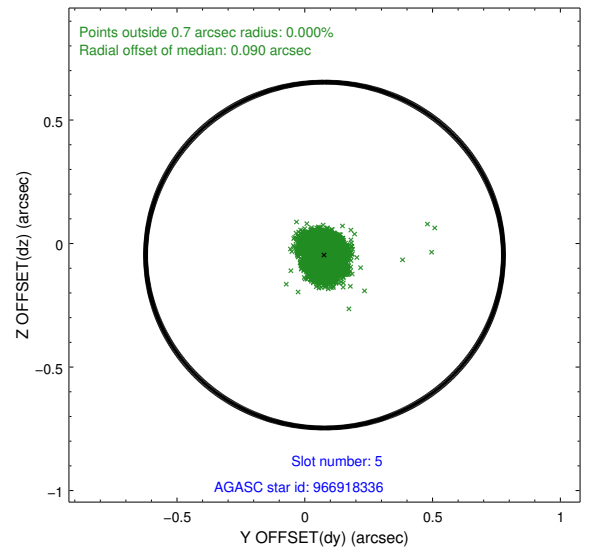
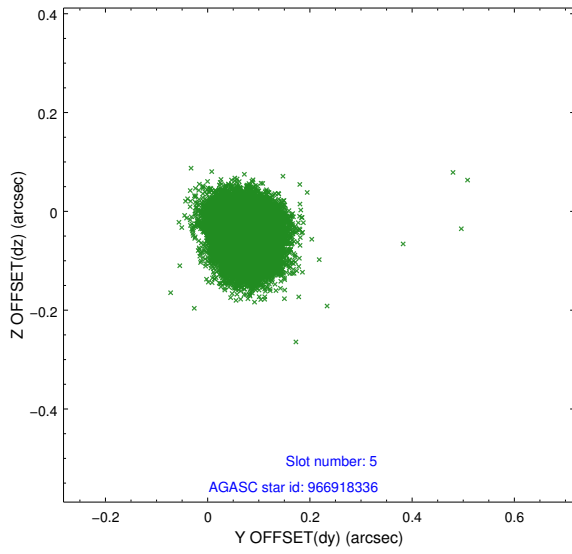
2.4.1 Slot 3



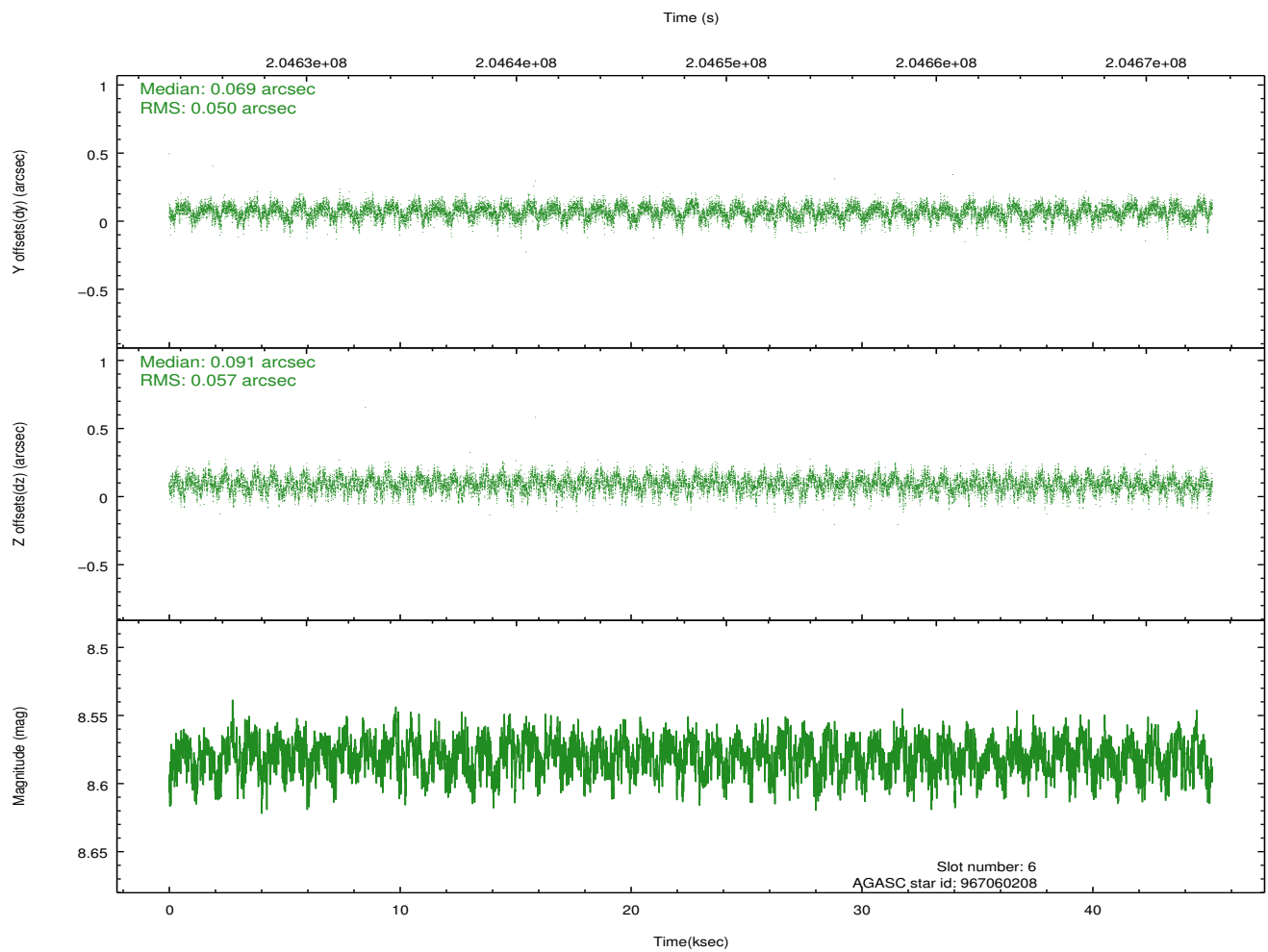
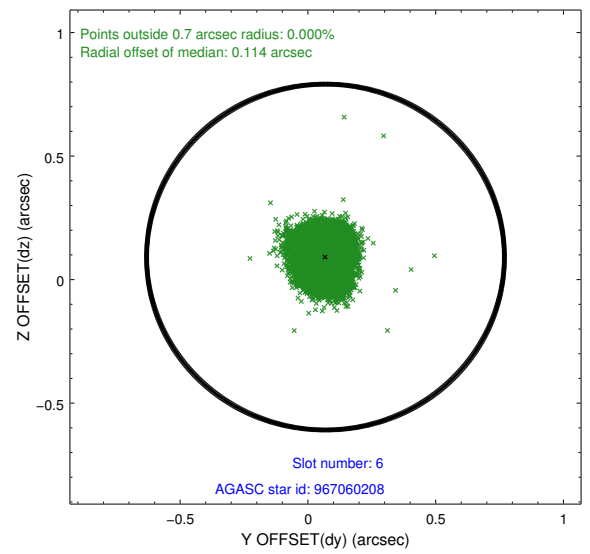
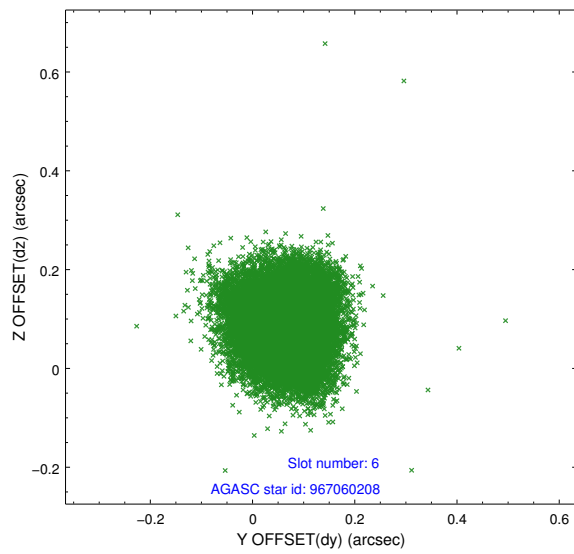
2.4.2 Slot 4



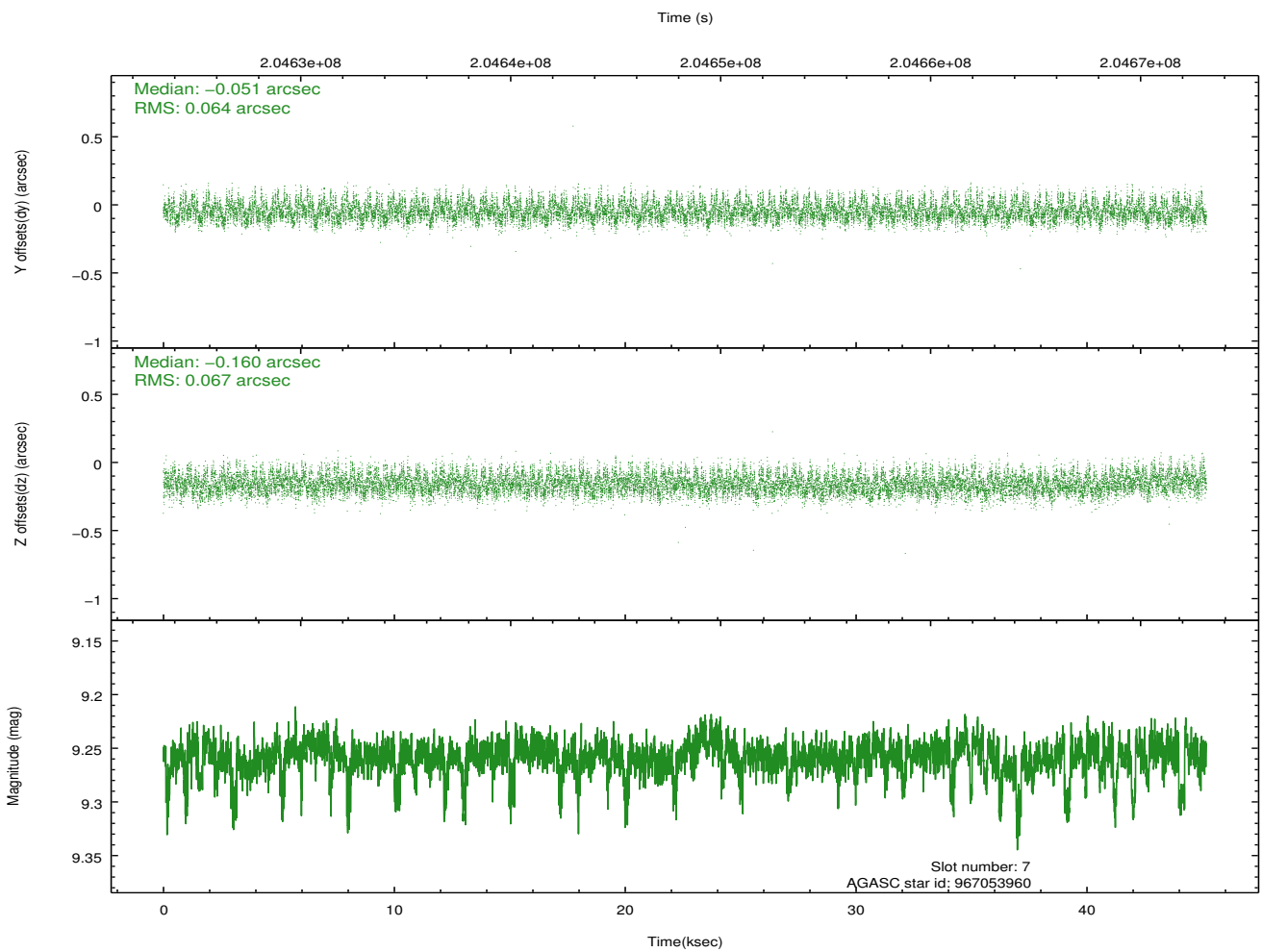
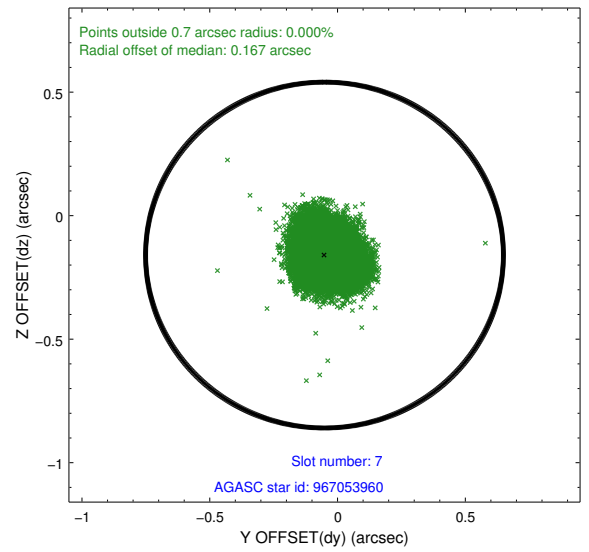
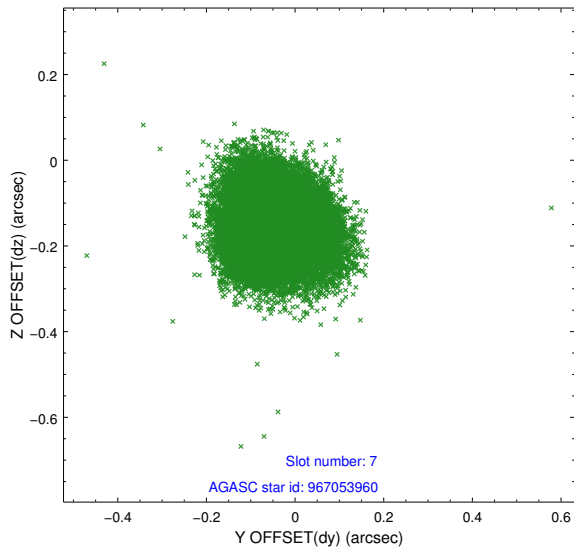
2.4.3 Slot 5



2.4.4 Slot 6

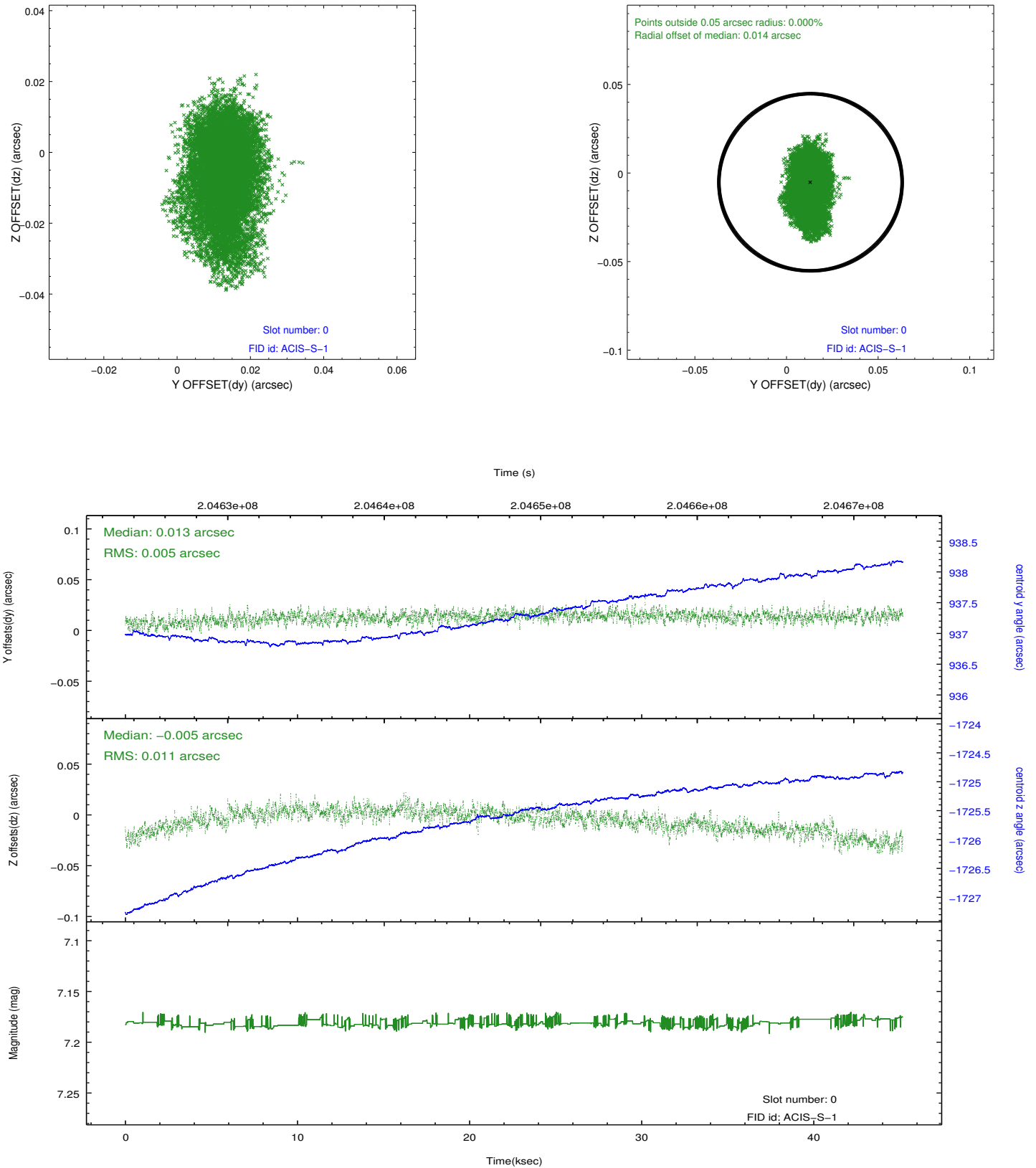


2.4.5 Slot 7

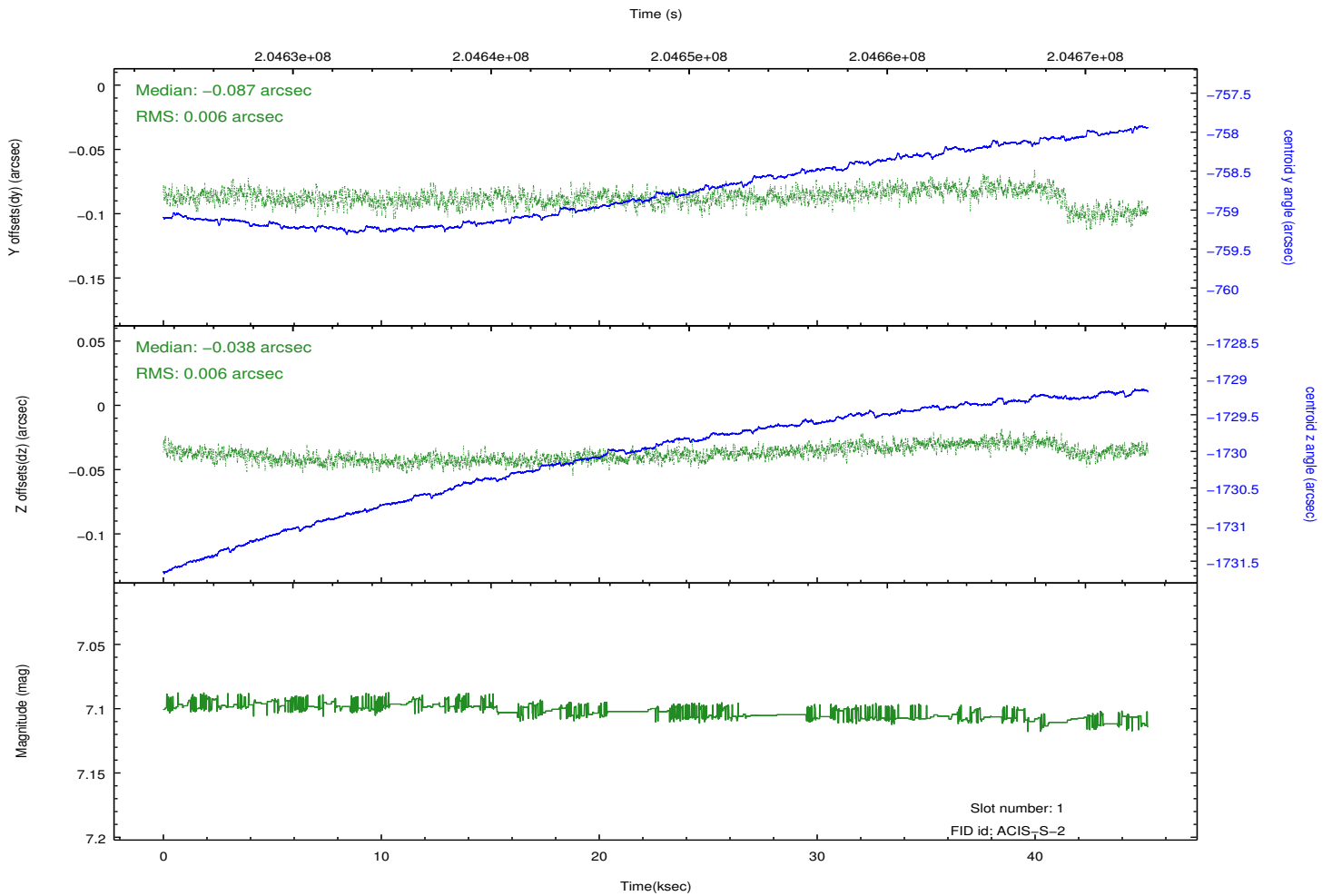
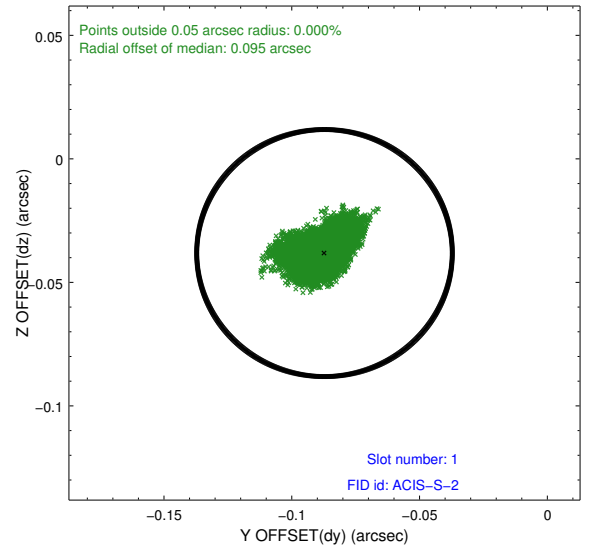
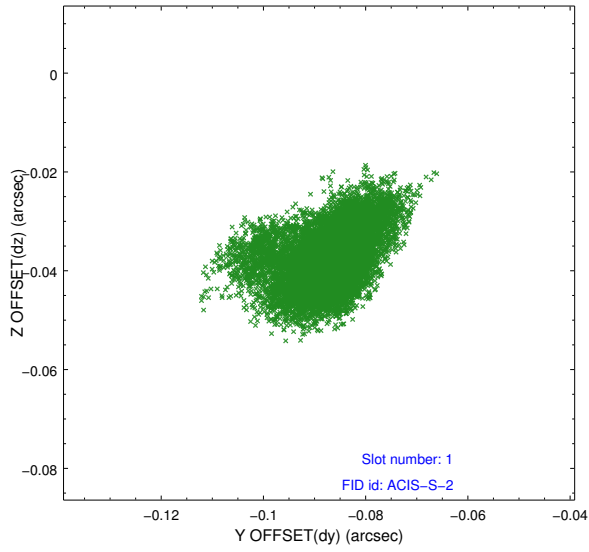


2.5 FID Slots

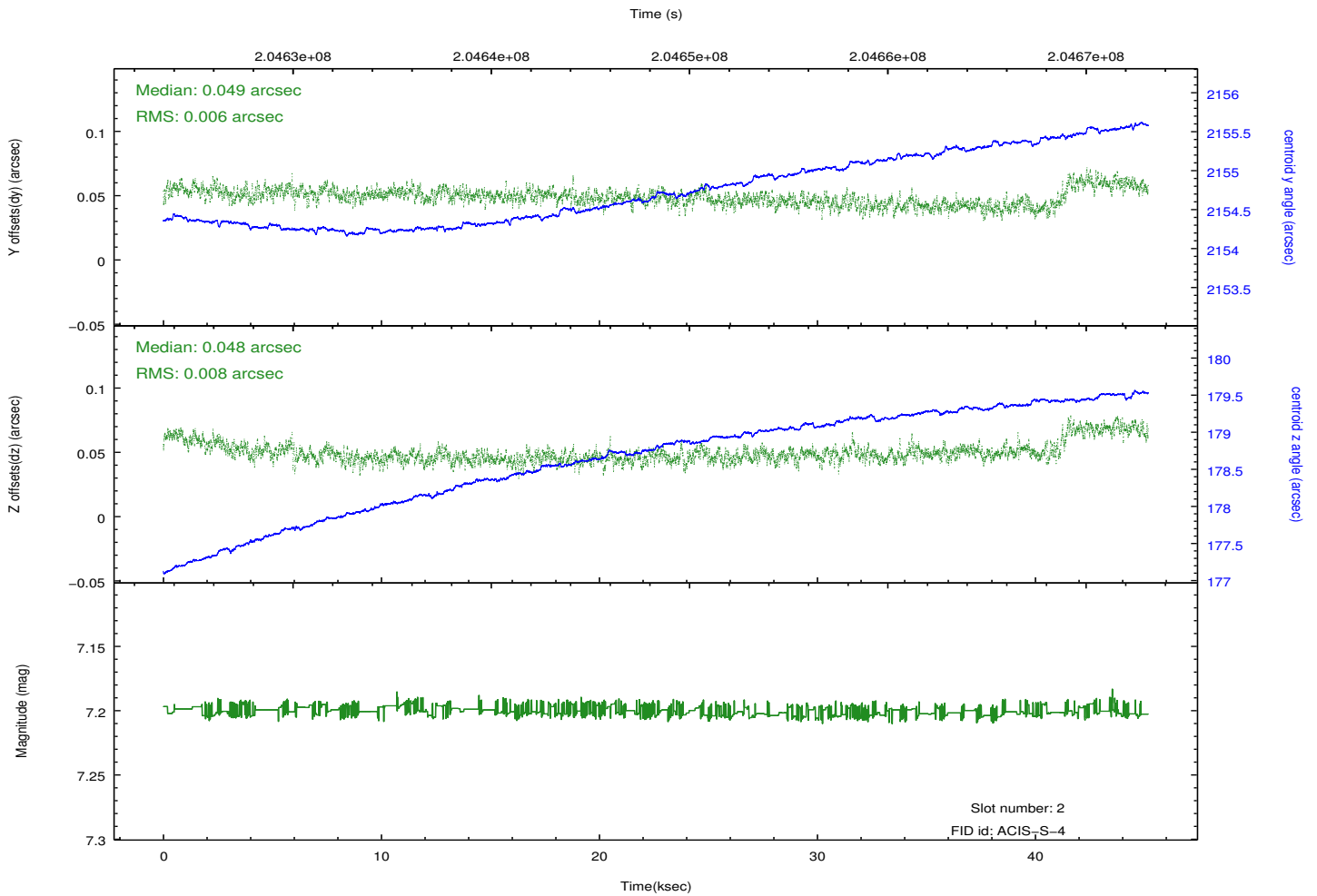
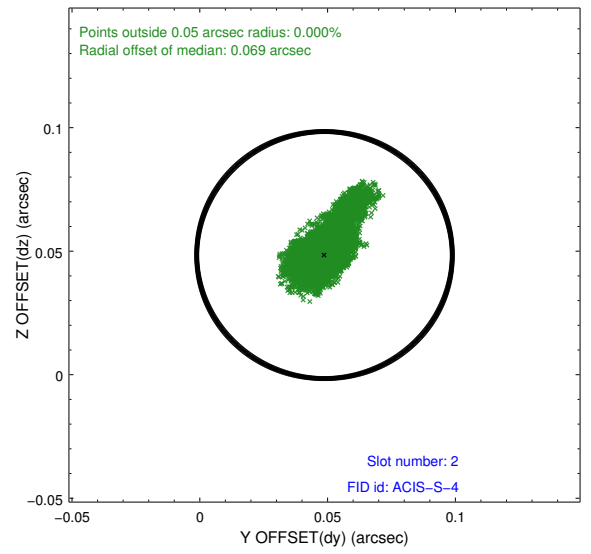
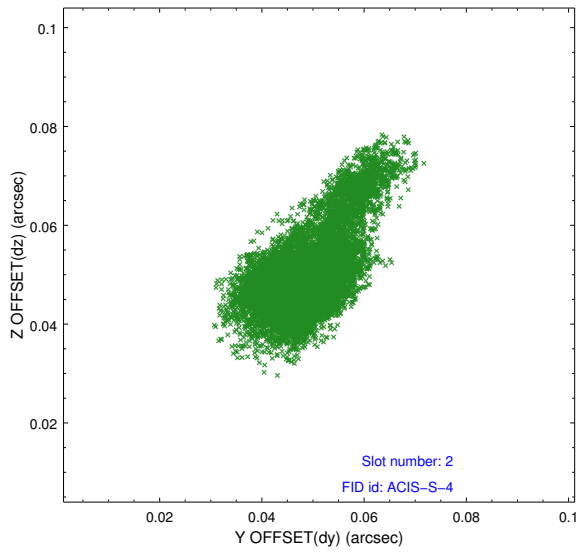
2.5.1 Slot 0



2.5.2 Slot 1



2.5.3 Slot 2



A Summary

A.1 Status

V&V Scientist	Jen Lauer
V&V Date (YYYY-MM-DD)	2012.12.20
V&V Edition	1
V&V Disposition and Status	OK
V&V Charge Time	45.183

A.2 Comments