

V&V Reference Report

L2 ASCDS Version : 8.1.2

Observation 461 - L2 Version 5
Chandra X-Ray Center

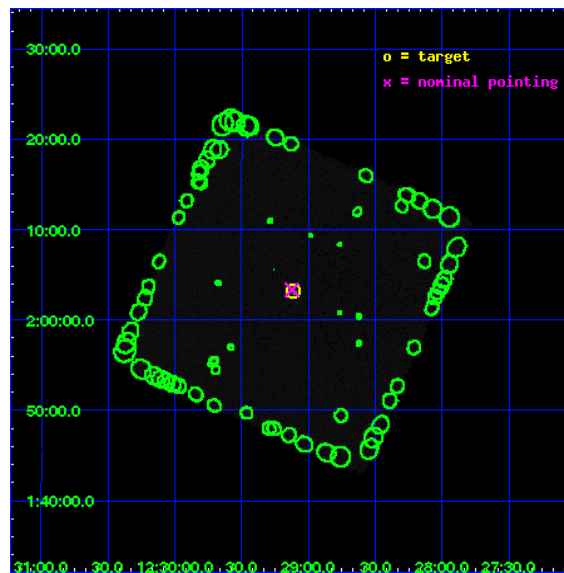
L2 Processing Date : Dec 5 2009

Contents

1	Front	2
2	OBI	3
2.1	OBI	3
2.1.1	Images	3
2.1.2	Parameters	4
2.1.3	Events	4
2.2	Compared Parameters	5
2.3	Aspect	6
2.4	Star Slots	9
2.4.1	Slot 3	9
2.4.2	Slot 4	10
2.4.3	Slot 5	11
2.4.4	Slot 6	12
2.5	FID Slots	13
2.5.1	Slot 0	13
2.5.2	Slot 1	14
2.5.3	Slot 2	15
3	Point Sources	16
A	Summary	17
A.1	Status	17
A.2	Comments	17

1 Front

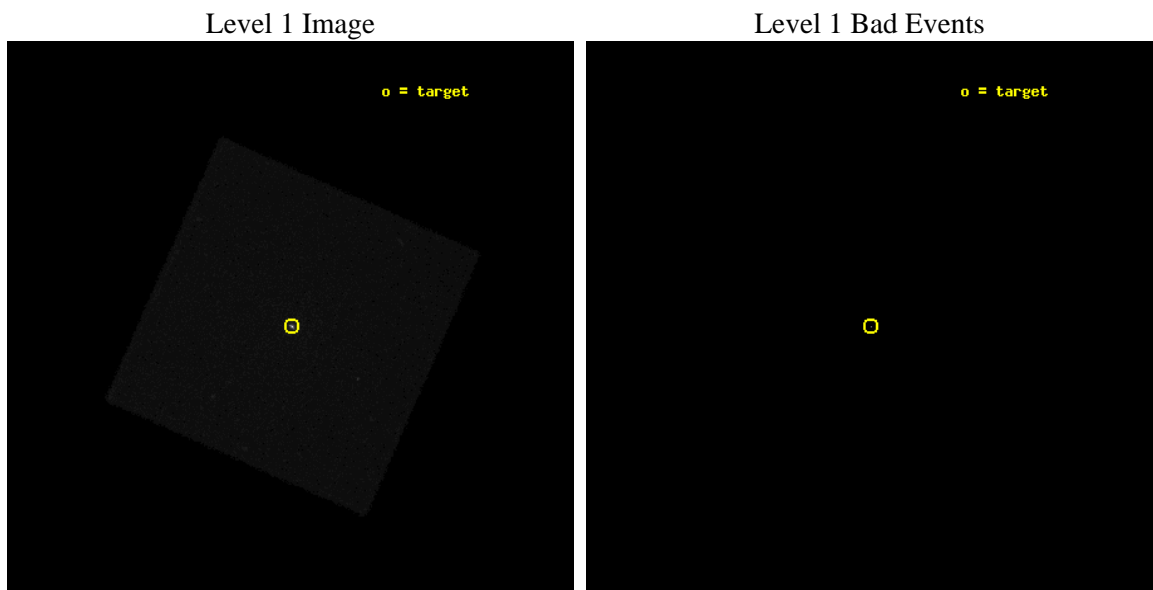
seq_num	790022	Sequence number
obs_id	461	Observation id
title	IN FLIGHT CALIBRATION OF THE HETGS EFFECTIVE AREA AND CROSS DISPERSION PROFILE	Proposal title
observer	Dr. CXC Calibration	Principal investigator
object	3C 273	Source name
ra_targ	187.277917	Observer's specified target RA
dec_targ	2.052389	Observer's specified target Dec
ra_nom	187.281213439	Nominal RA
dec_nom	2.0557489469386	Nominal Dec
roll_nom	68.863452323953	Nominal Roll
revision	5	Processing version of data
ontime	20212.231984578	[s]
livetime	20078.549895047	Ontime multiplied by DTCOR
l2events	806308	Number of level 2 events



2 OBI

2.1 OBI

2.1.1 Images



2.1.2 Parameters

obi_num	1	Obi number	sched_exp_time	20000.000000	Scheduled observation exposure time
ascdsver	8.1.2	Processing system revision	ontime	20212.231984578	[s]
caldbver	4.1.4	 	ll events	1125623	Number of level 1 events
date	2009-12-05T06:48:27	Date and time of file creation			
revision	4	Processing version of data			

2.1.3 Events

Level 1 Events

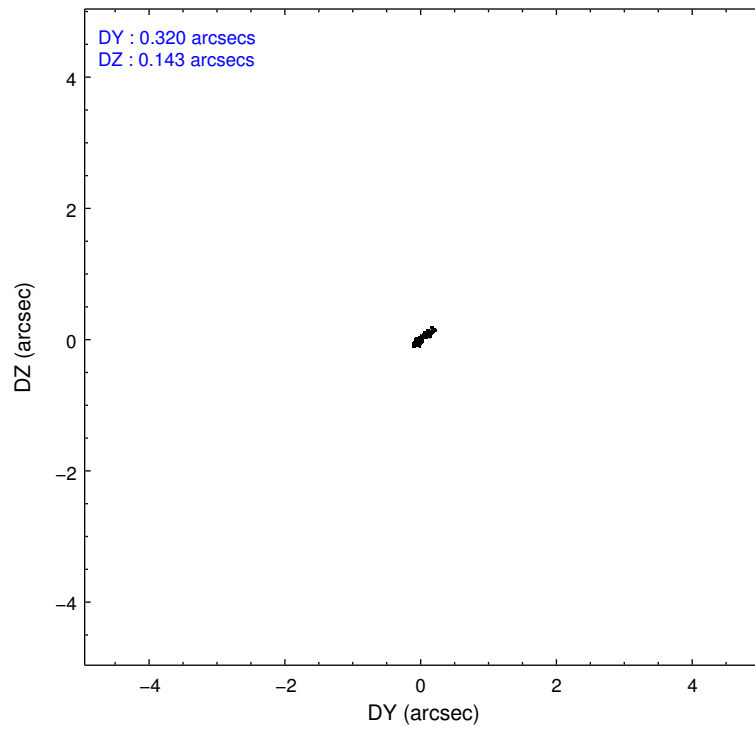
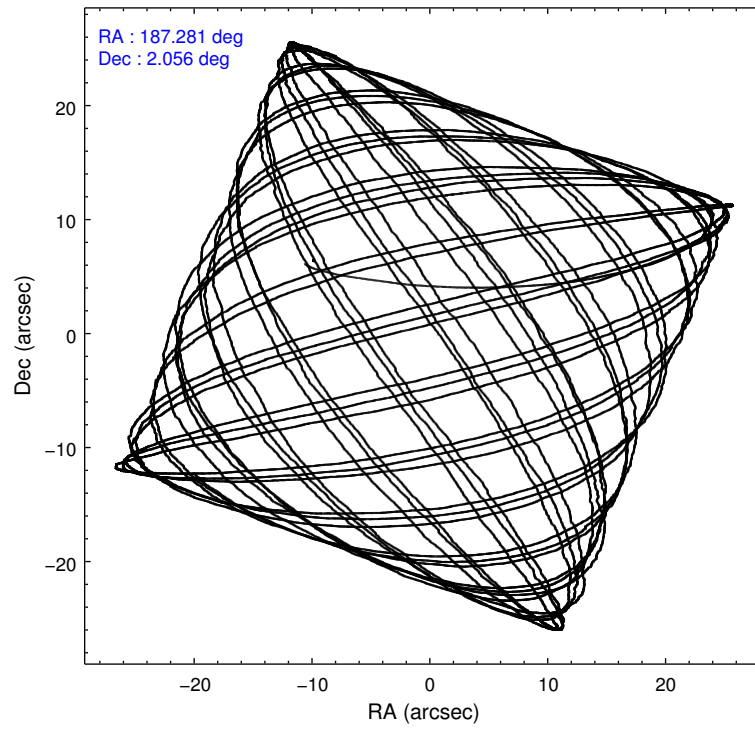
	segment 0
level 1 events	1125623
rejected events	2959
rejected %	0%

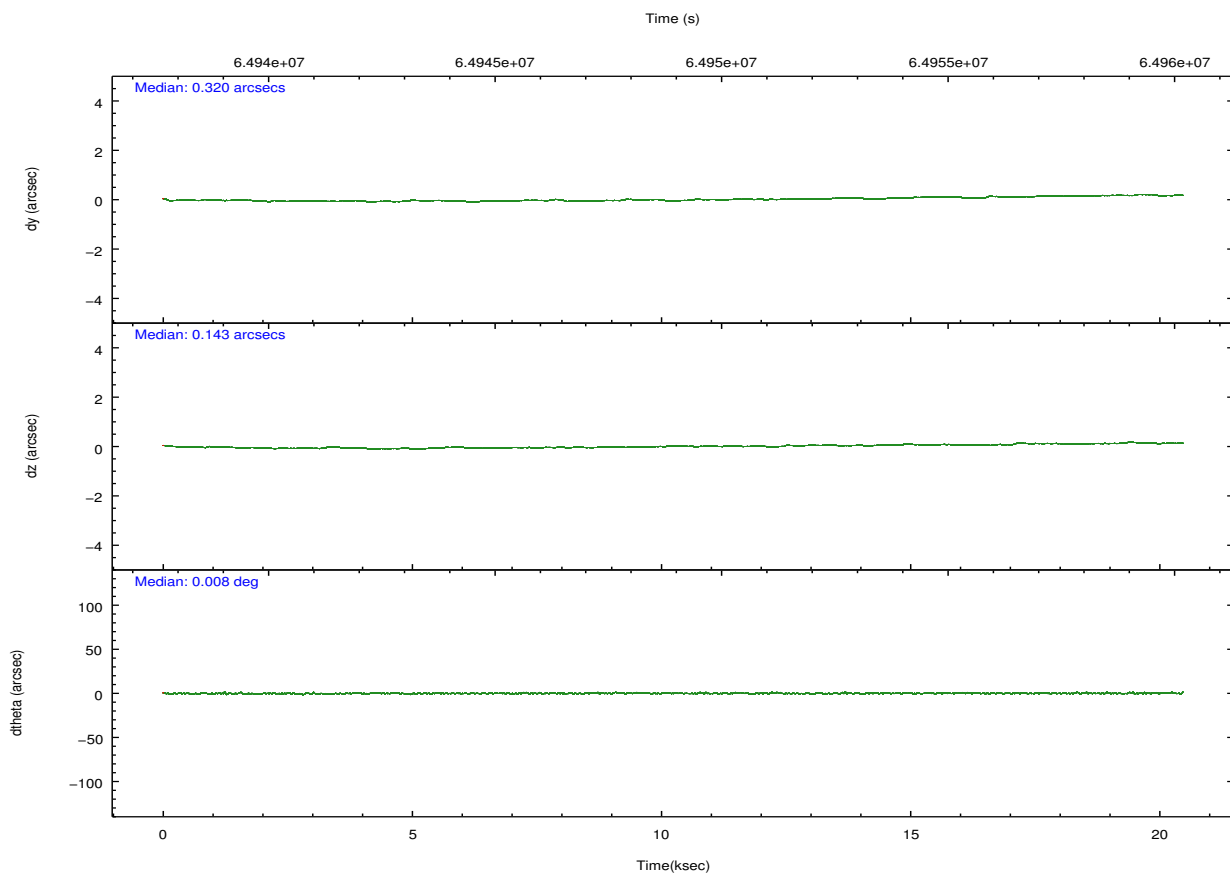
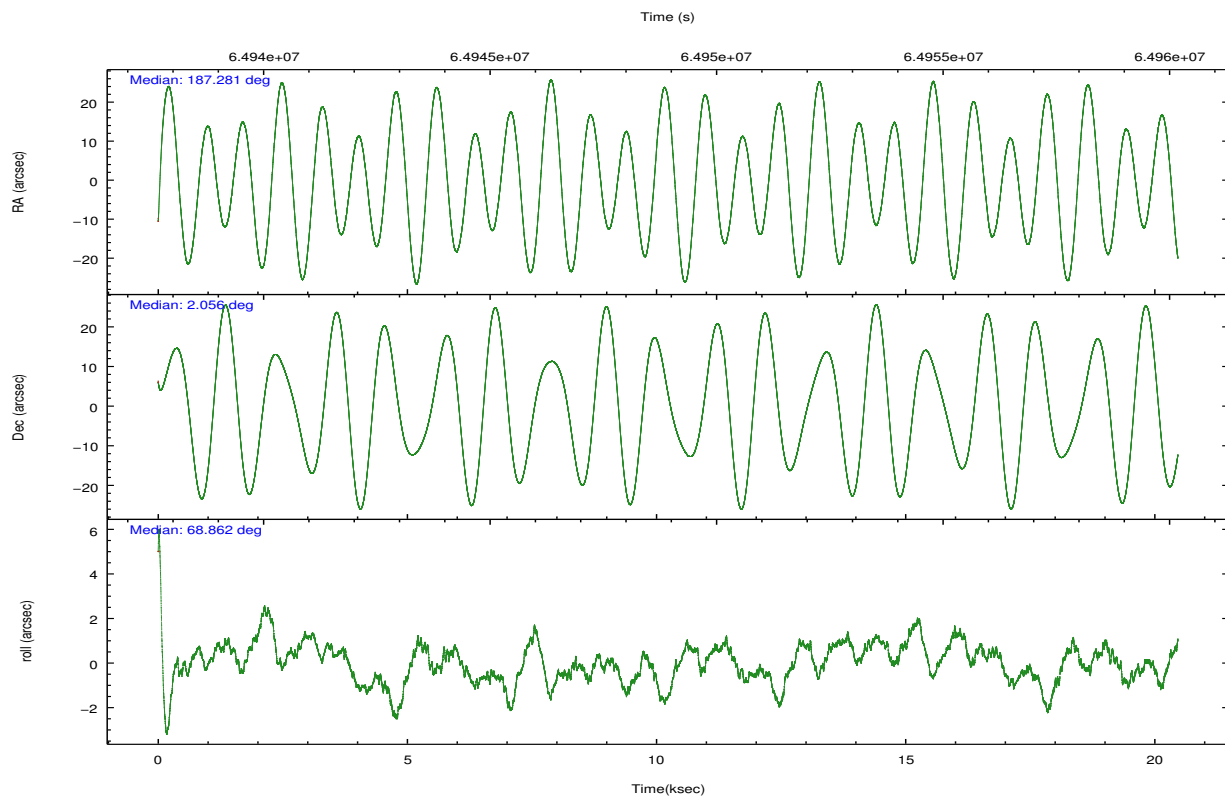
2.2 Compared Parameters

Parameter	Planned	Actual
Instrument	HRC	HRC
Detector	HRC-I	HRC-I
Grating	NONE	NONE
Data mode	OBSERVING	OBSERVING
Observation mode	POINTING	POINTING
Pointing RA	187.285606	187.2812134389954
Pointing Dec	2.028725	2.055748946938553
Pointing Roll	68.958778	68.8634523239531
SIM focus pos (mm)	-1.040293	-1.038866356238299
SIM defocus (mm)	0	0.001426264420575141
SIM translation stage pos (mm)	126.985494	126.9829799899862
SIM translation stage offset (mm)	0	0.002508901615314585
Observation start time	64939159.184000	64937135.640604
Observation start date	2000-01-22T14:38:15	2000-01-22T14:05:35
Observation end time	64959159.184000	64959762.003926
Observation end date	2000-01-22T20:11:35	2000-01-22T20:22:42

Parameter	Planned	Actual
Obspar format version number	6	6
Obspar file type	PREDICTED	ACTUAL
Obspar update status	NONE	UPDATED

2.3 Aspect



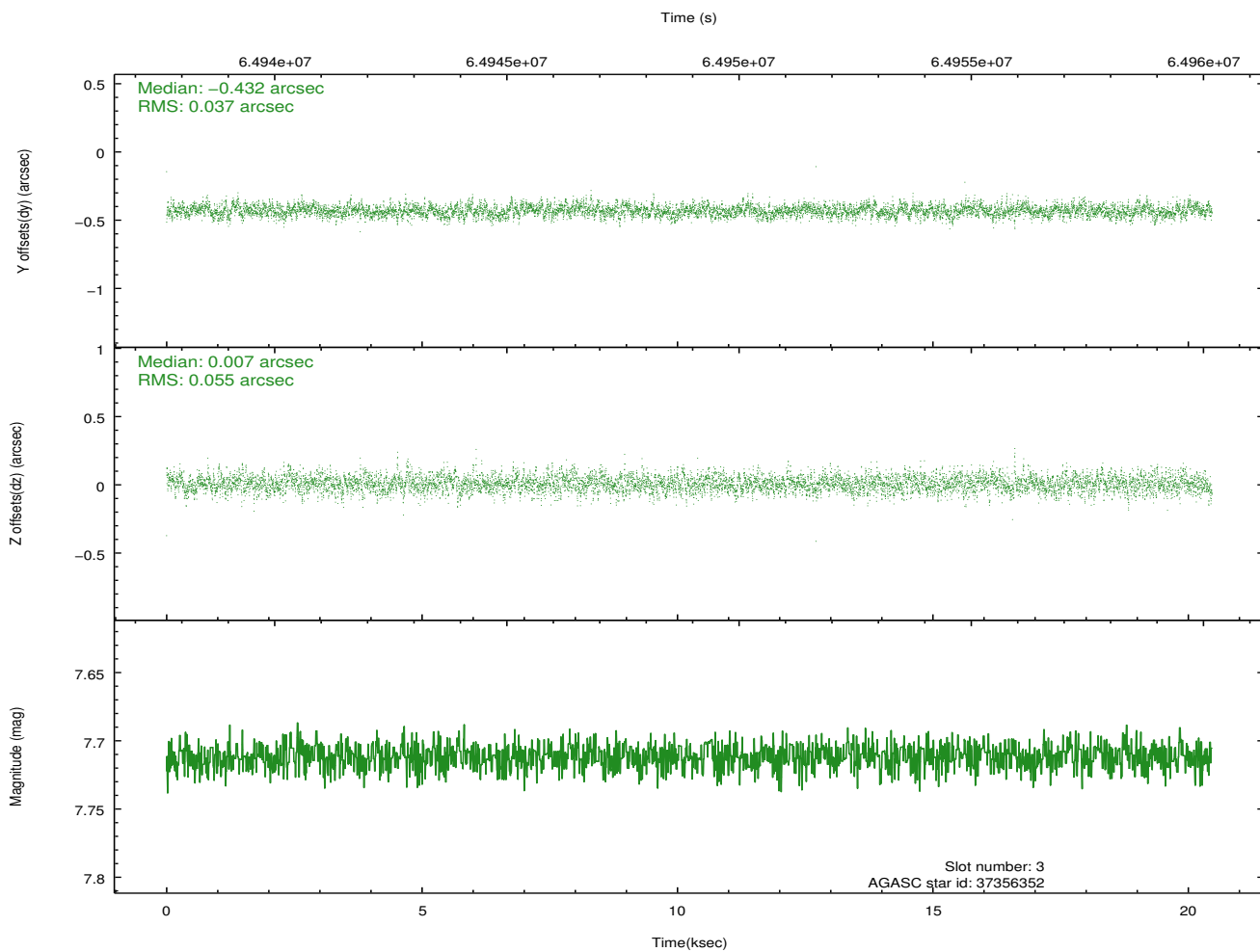
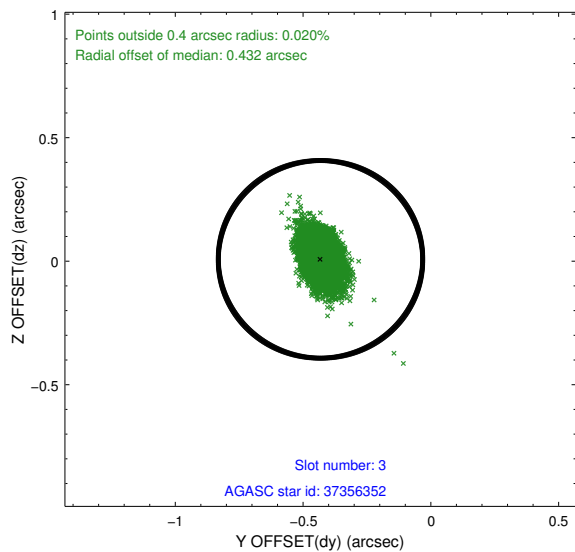
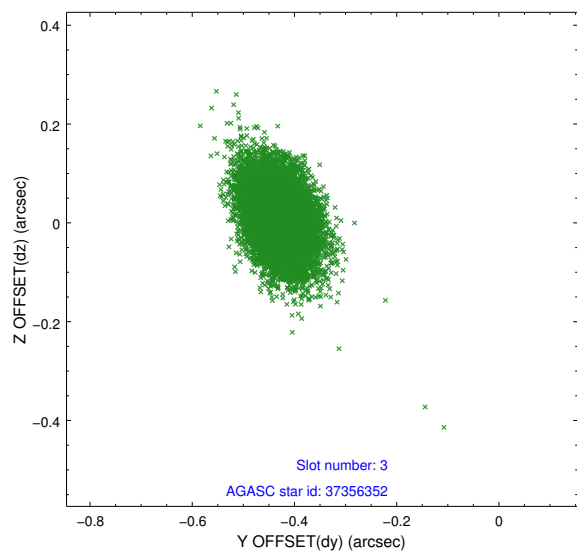


Slot Statistics

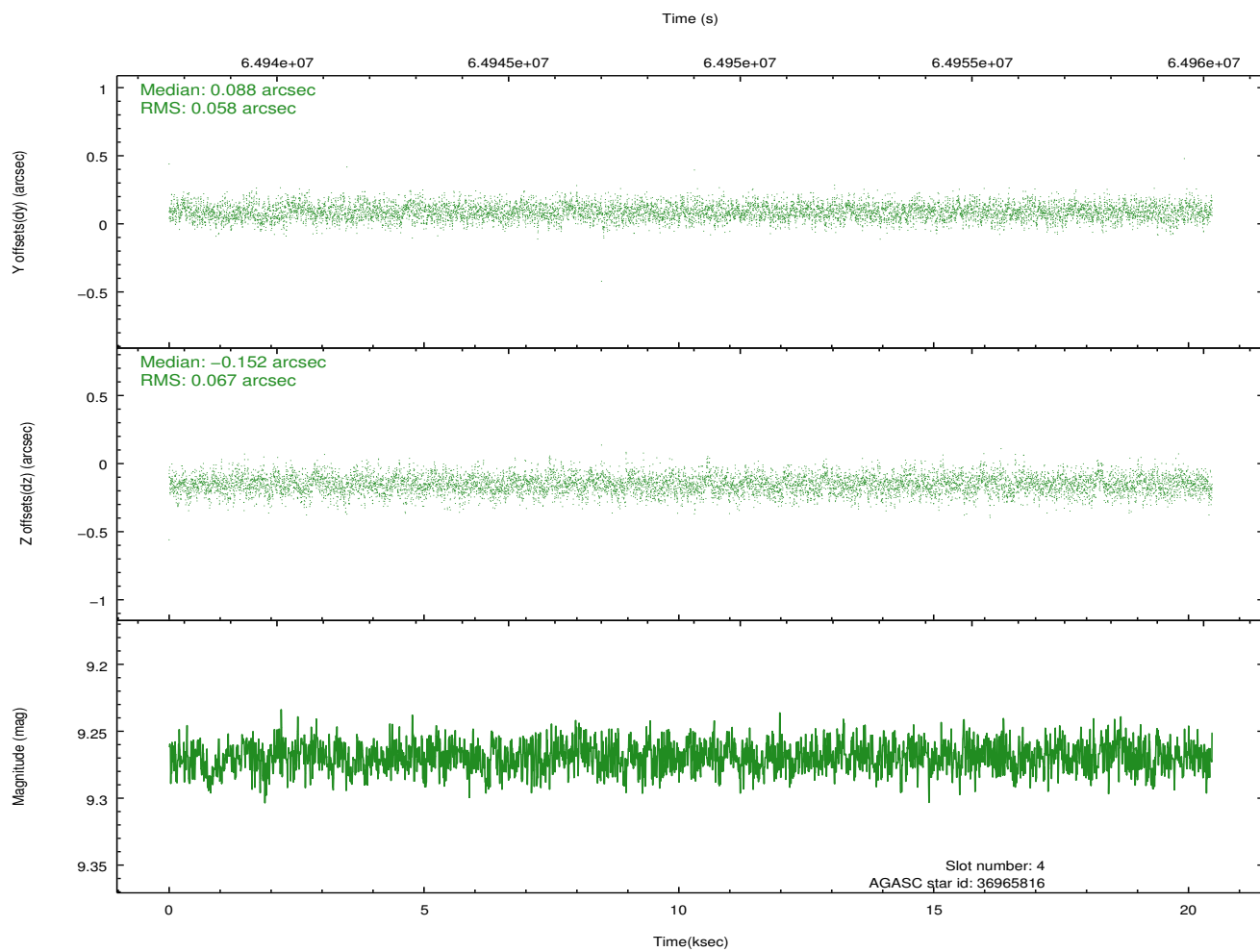
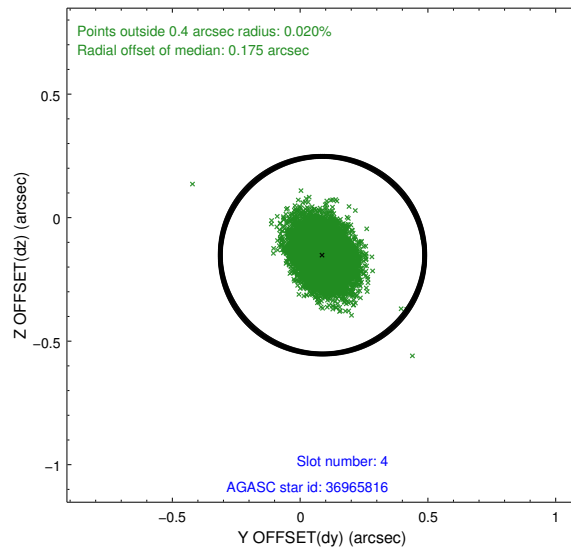
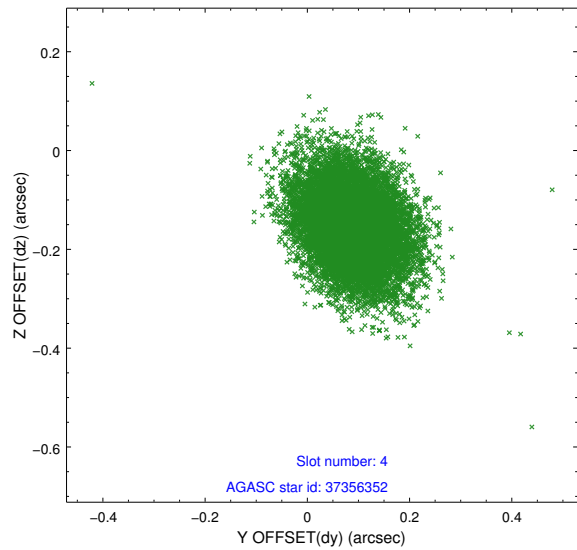
slot	status	id	mag	n_pts	med_dy	med_dz	dr1	dr2	ra	dec	mean_y	mean_z
0	FID	HRC-I-1	6.96	4992	0.017	-0.011	0.007	0.011	0.000000	0.000000	-755.71	-1287.83
1	FID	HRC-I-3	7.05	4992	0.042	-0.064	0.006	0.011	0.000000	0.000000	-1184.36	1016.42
2	FID	HRC-I-4	6.99	4992	0.056	-0.014	0.006	0.010	0.000000	0.000000	1286.85	1014.58
3	GUIDE	37356352	7.71	9984	-0.432	0.007	0.068	0.119	187.433784	2.618460	2173.26	264.67
4	GUIDE	36965816	9.27	9977	0.088	-0.152	0.093	0.153	186.823353	1.771455	-1460.30	1219.49
5	GUIDE	36963280	9.63	9971	0.282	-0.122	0.112	0.190	186.985307	1.456816	-2308.56	269.10
6	GUIDE	37883040	10.03	9974	0.063	0.265	0.116	0.195	187.575516	1.280402	-2138.94	-1941.25
7	UNUSED		0.00	0	0.000	0.000	0.000	0.000	0.000000	0.000000	0.00	0.00

2.4 Star Slots

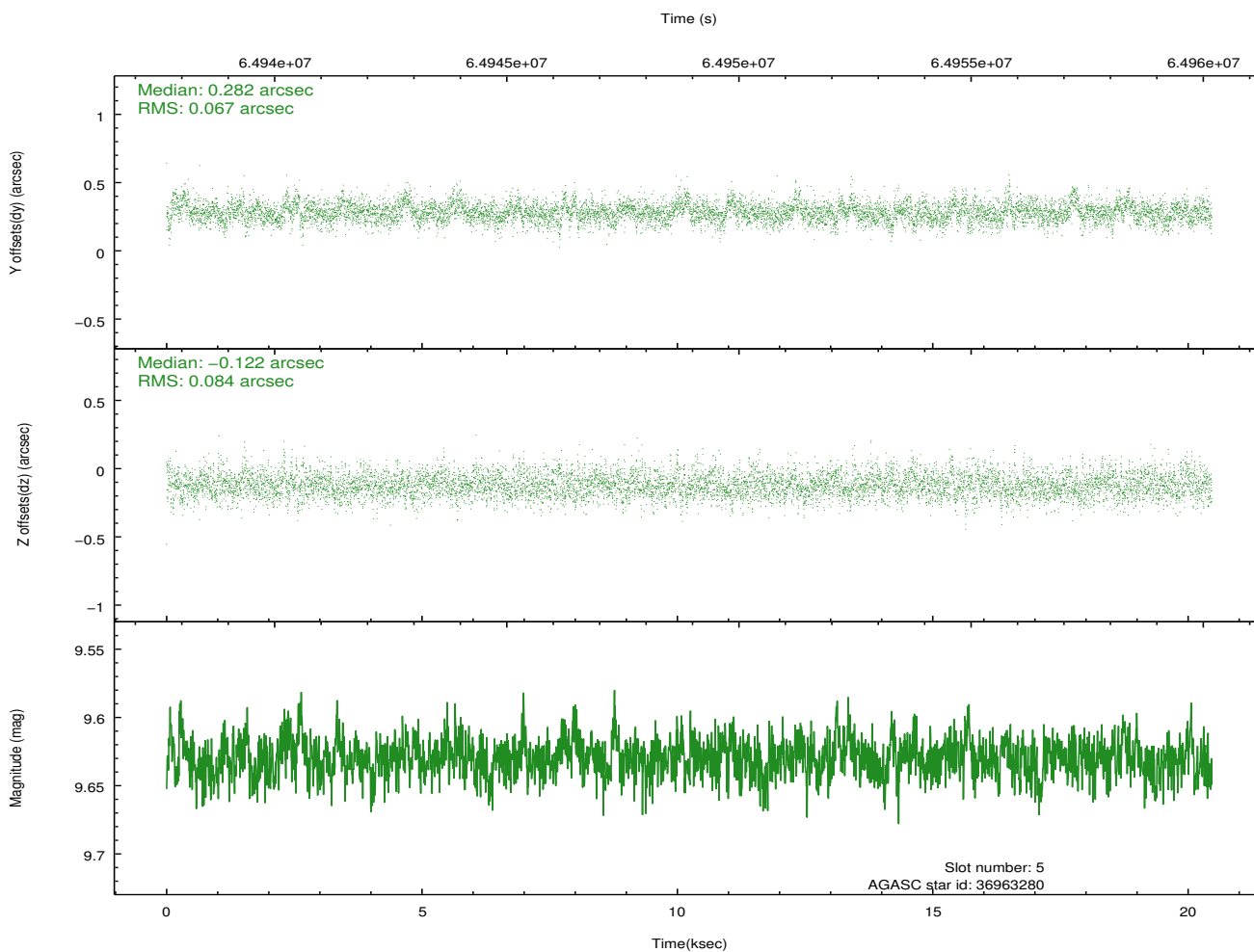
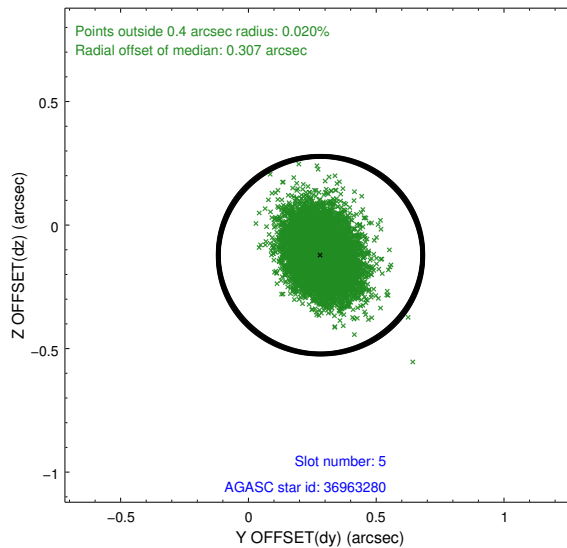
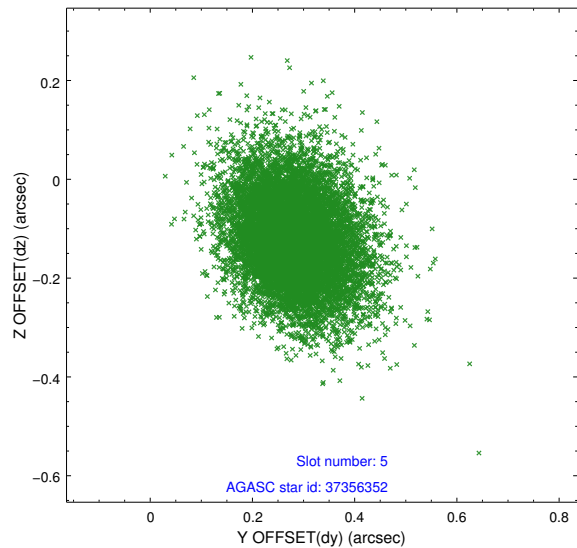
2.4.1 Slot 3



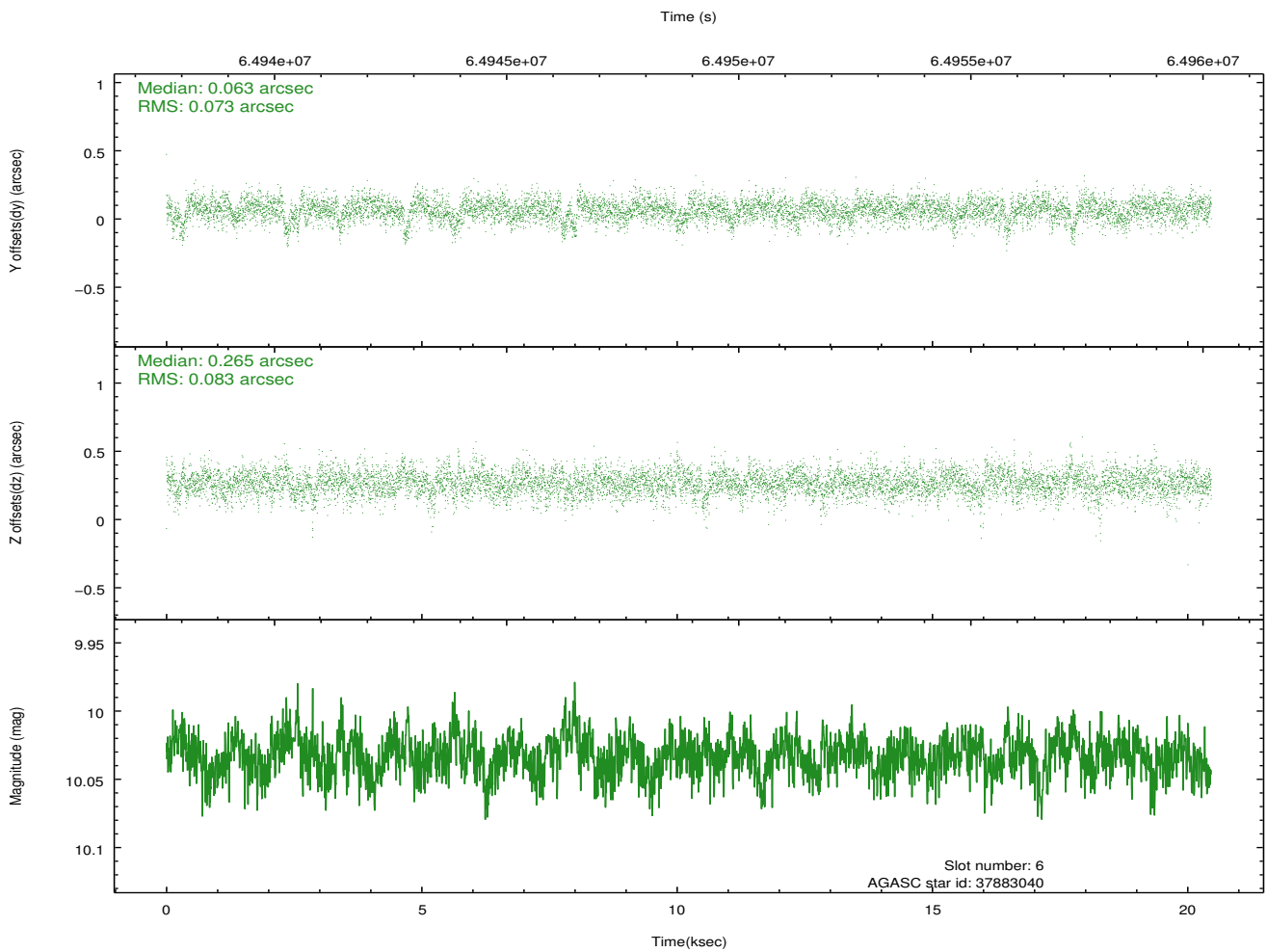
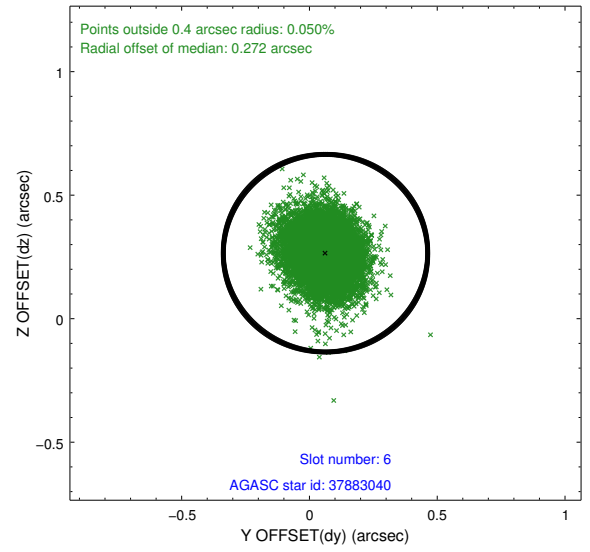
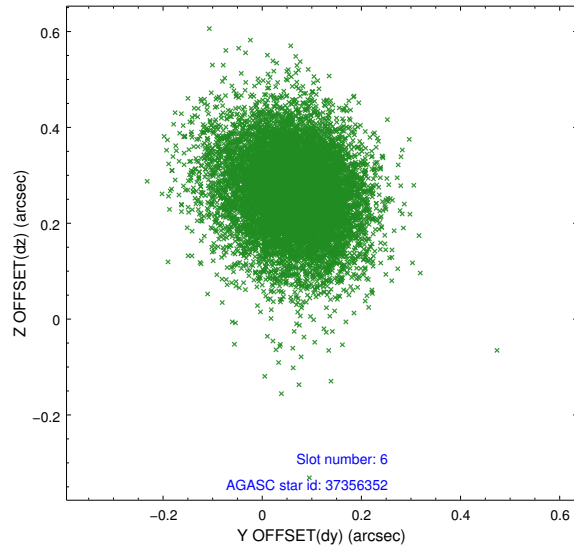
2.4.2 Slot 4



2.4.3 Slot 5

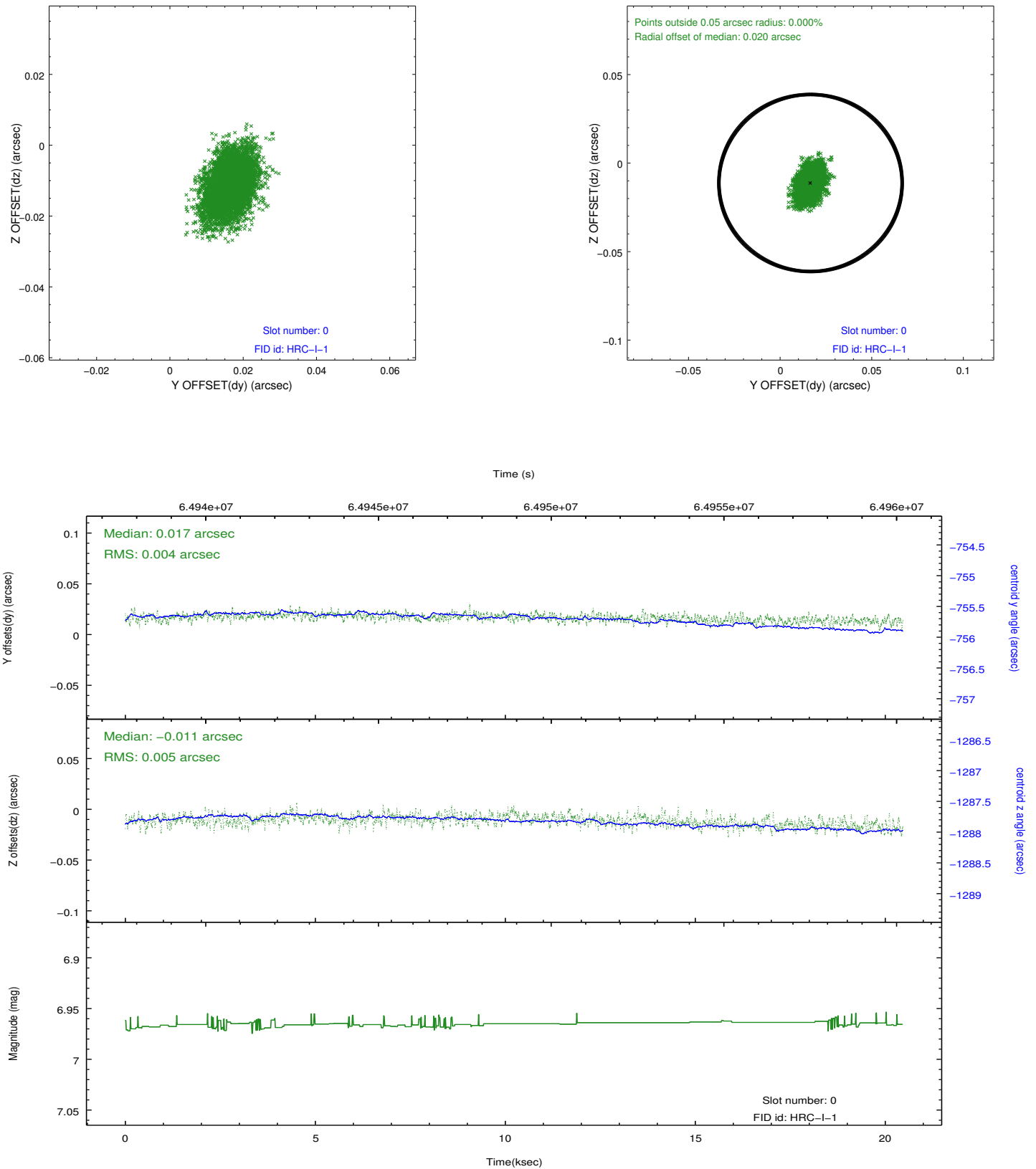


2.4.4 Slot 6

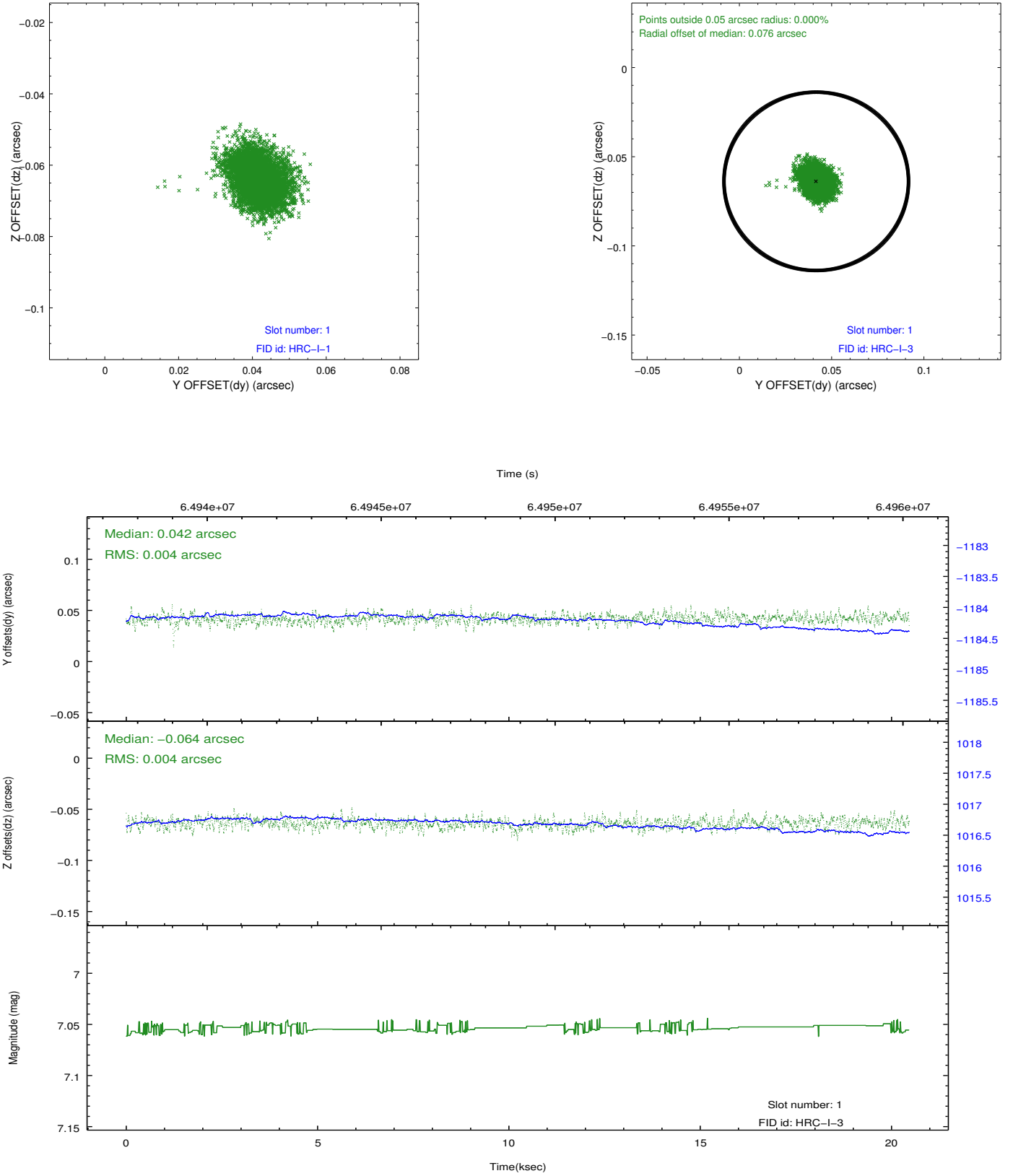


2.5 FID Slots

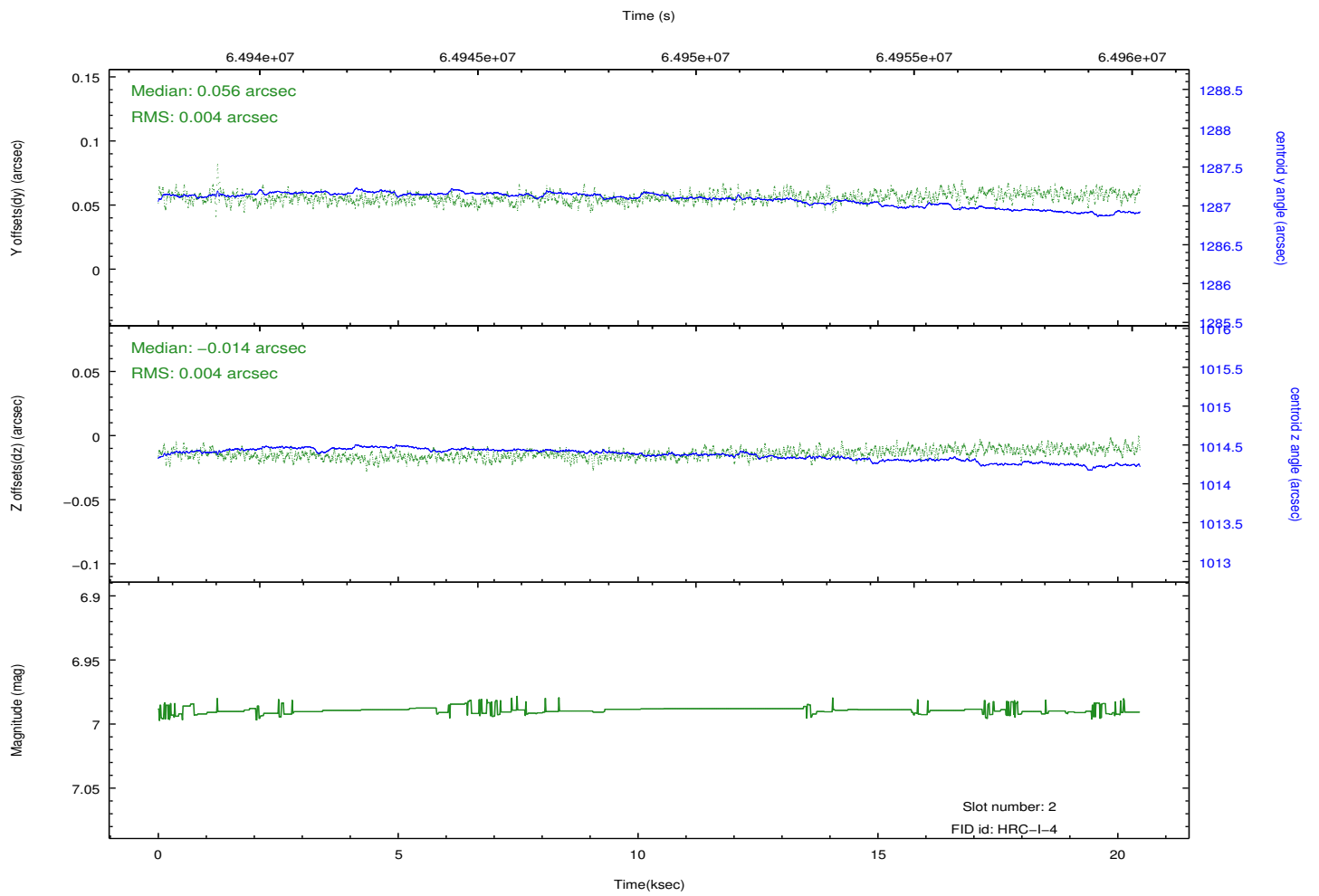
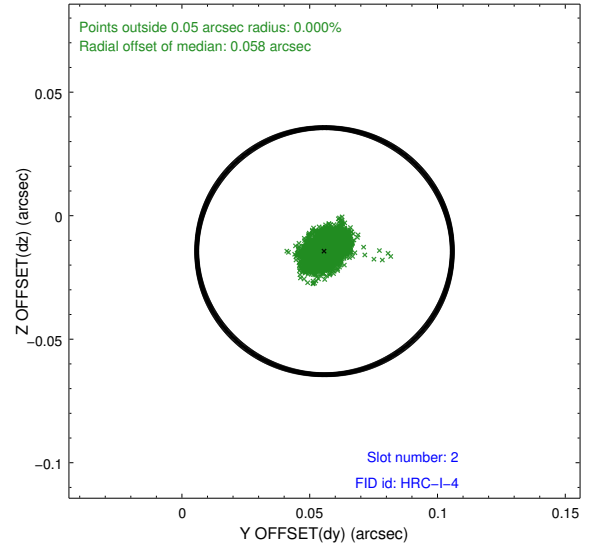
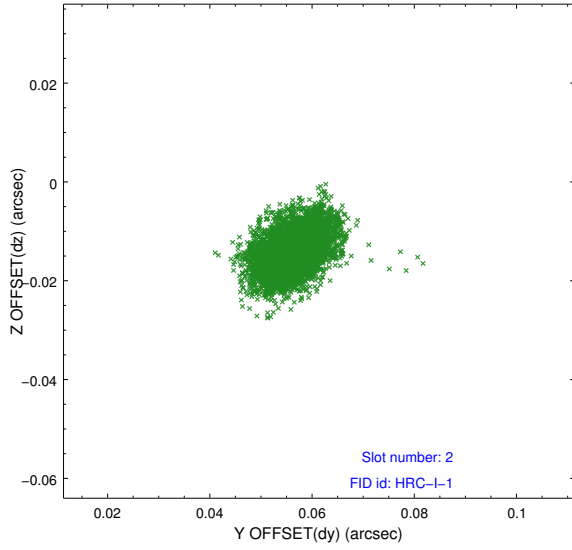
2.5.1 Slot 0



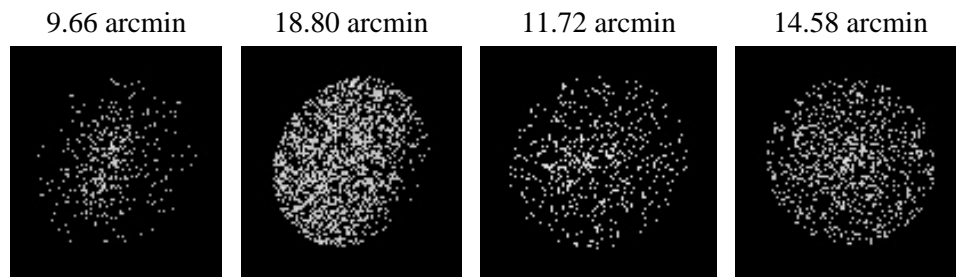
2.5.2 Slot 1



2.5.3 Slot 2



3 Point Sources



A Summary

A.1 Status

V&V Scientist	Joy Nichols
V&V Date (YYYY-MM-DD)	2009.12.07
V&V Edition	1
V&V Disposition and Status	OK
V&V Charge Time	20.206

A.2 Comments