

V&V Reference Report

L2 ASCDS Version : 8.5.1

Observation 4741 - L2 Version 3
Chandra X-Ray Center

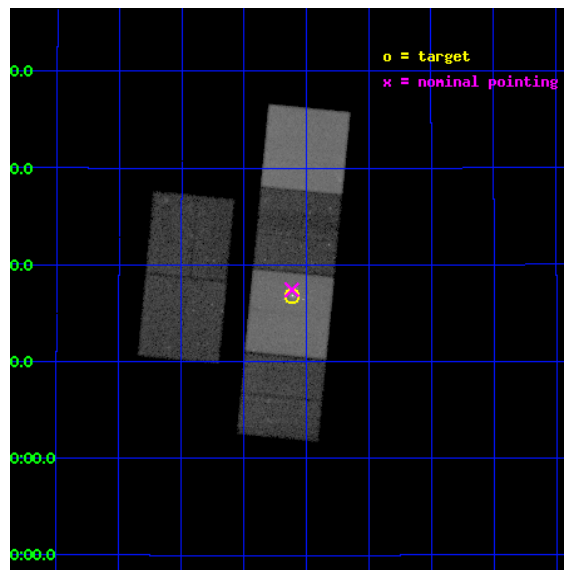
L2 Processing Date : Dec 17 2012

Contents

1	Front	2
2	OBI	3
2.1	OBI	3
2.1.1	Images	3
2.1.2	Bias	3
2.1.3	Parameters	4
2.1.4	Events	4
2.2	Compared Parameters	5
2.3	Aspect	6
2.4	Star Slots	9
2.4.1	Slot 3	9
2.4.2	Slot 4	10
2.4.3	Slot 5	11
2.4.4	Slot 6	12
2.4.5	Slot 7	13
2.5	FID Slots	14
2.5.1	Slot 0	14
2.5.2	Slot 1	15
2.5.3	Slot 2	16
A	Summary	17
A.1	Status	17
A.2	Comments	17

1 Front

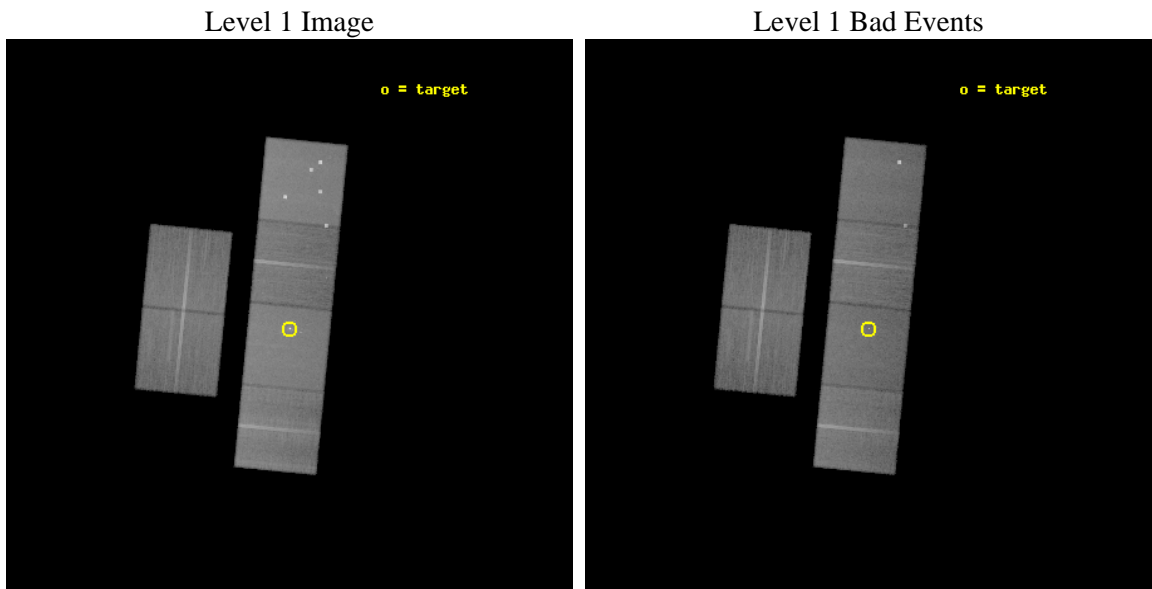
seq_num	600396	Sequence number
obs_id	4741	Observation id
title	Observing LMXBs in High Globular Cluster Specific Frequency Elliptical Galaxies	Proposal title
observer	Professor JIMMY IRWIN	Principal investigator
object	NGC4278	Source name
dtcycle	0	
cycle	P	events from which exps? Prim/Second/Both
ra_targ	185.028333	Observer's specified target RA [deg]
dec_targ	29.280833	Observer's specified target Dec [deg]
ra_nom	185.02920136649	Nominal RA [deg]
dec_nom	29.290483949006	Nominal Dec [deg]
roll_nom	95.582716667199	Nominal Roll [deg]
revision	3	Processing version of data
ontime	37941.227139145	Sum of GTIs [s]
livetime	37460.792475645	Livetime [s]
ontime2	37931.545228183	Sum of GTIs [s]
ontime3	37941.104019135	Sum of GTIs [s]
ontime5	37941.186099142	Sum of GTIs [s]
ontime6	37937.90404892	Sum of GTIs [s]
ontime7	37941.227139145	Sum of GTIs [s]
ontime8	37941.062979162	Sum of GTIs [s]
l2events	455641	Number of level 2 events



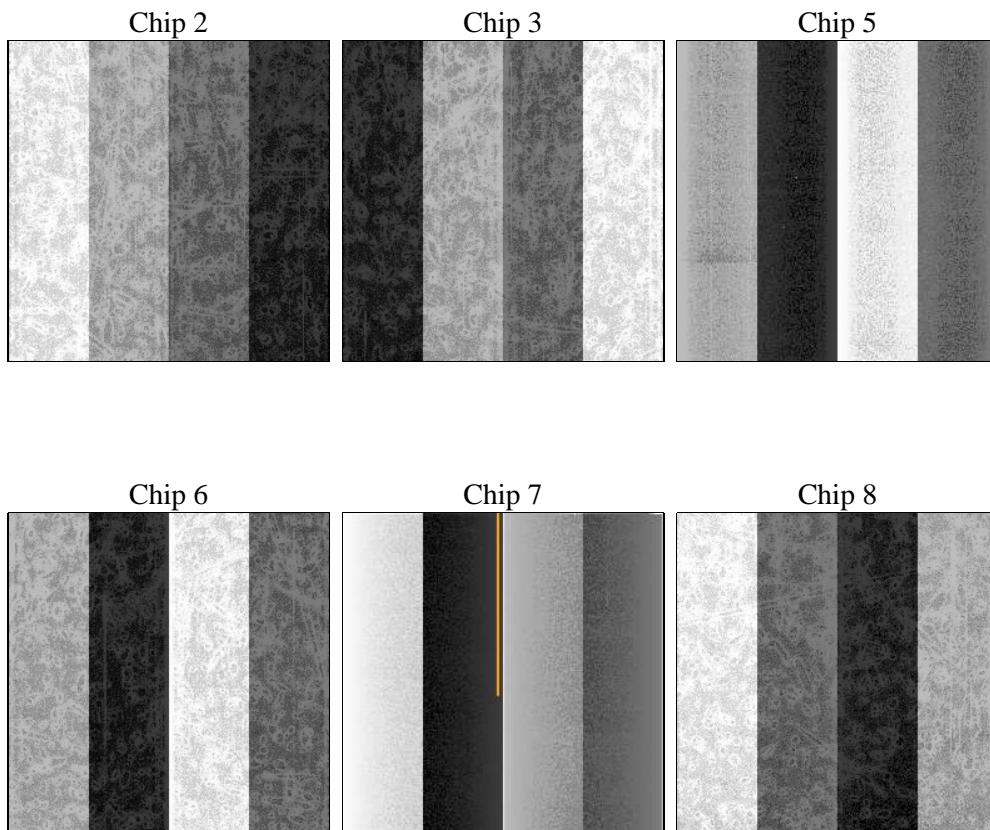
2 OBI

2.1 OBI

2.1.1 Images



2.1.2 Bias



2.1.3 Parameters

obi_num	0	Obi number	sched_exp_time	38000.000000	[s] Scheduled observation exposure time
ascdsver	8.5.1	Processing system revision	ontime	37941.227139145	Sum of GTIs [s]
caldbver	4.5.5	 	ontime2	37931.545228183	Sum of GTIs [s]
date	2012-12-17T04:40:24	Date and time of file creation	ontime3	37941.104019135	Sum of GTIs [s]
revision	3	Processing version of data	ontime5	37941.186099142	Sum of GTIs [s]
			ontime6	37937.90404892	Sum of GTIs [s]
			ontime7	37941.227139145	Sum of GTIs [s]
			ontime8	37941.062979162	Sum of GTIs [s]
			l1events	2012605	Number of level 1 events

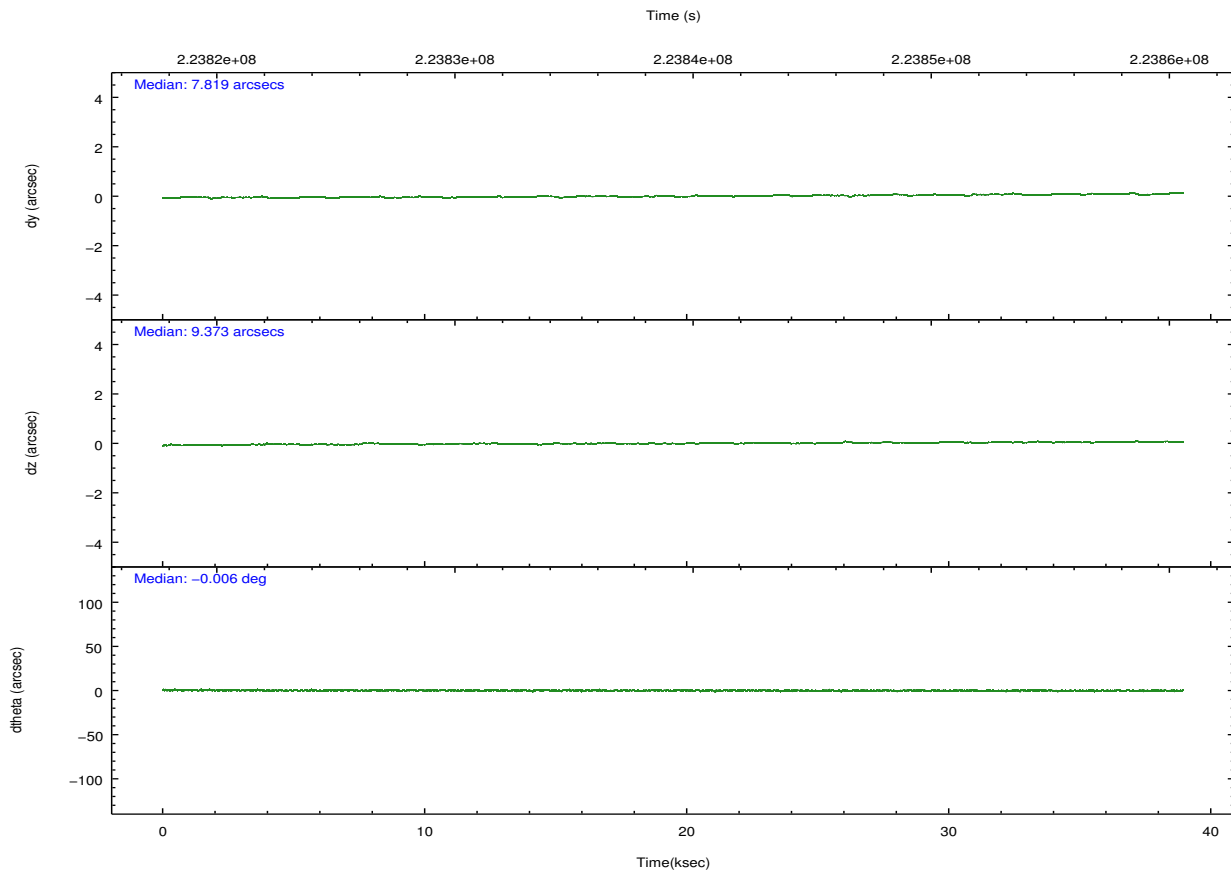
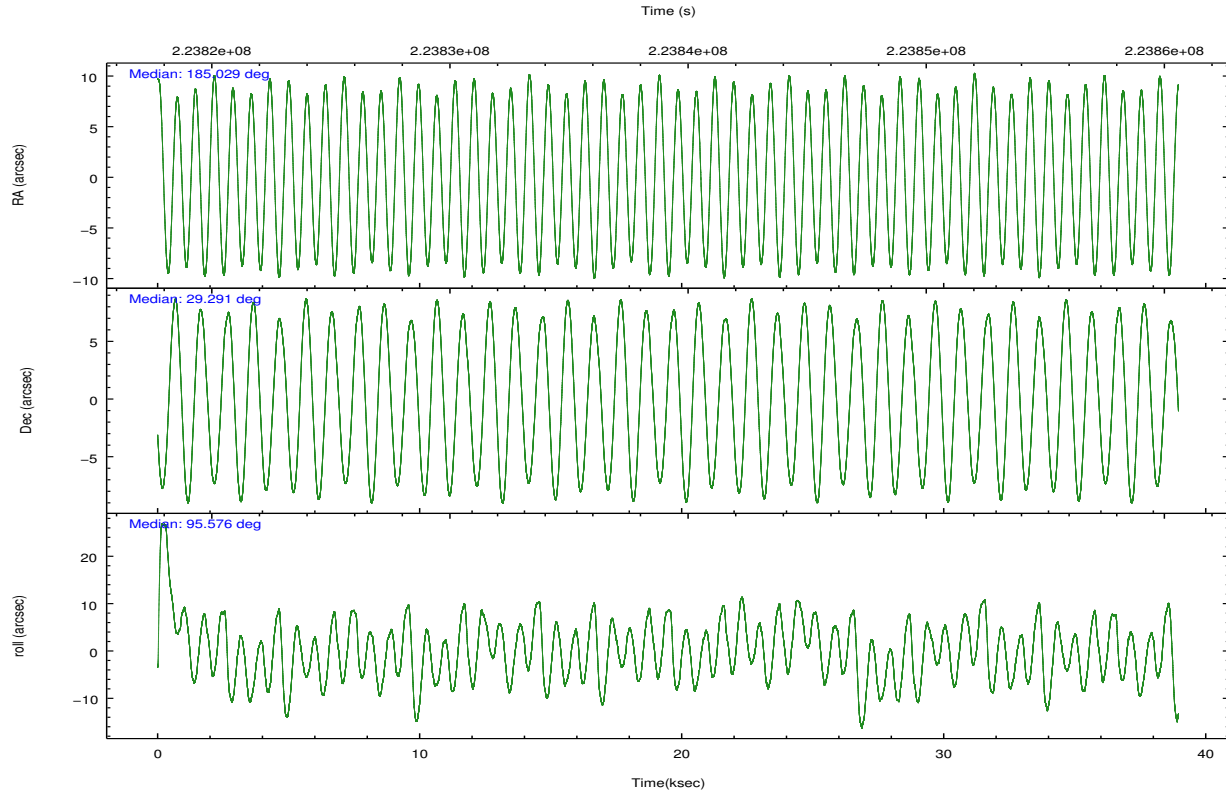
2.1.4 Events

	ccd 2	ccd 3	ccd 5	ccd 6	ccd 7	ccd 8		ccd 2	ccd 3	ccd 5	ccd 6	ccd 7	ccd 8
level 1 events	279789	267904	446252	281397	385735	351528	grade 0 events	14188	14231	38517	13573	17028	23856
rejected events	247072	235669	234334	247463	220557	276543		5%	5%	8%	4%	4%	6%
rejected %	88%	87%	52%	87%	57%	78%	grade 1 events	200	181	1672	127	557	248
								0%	0%	0%	0%	0%	0%
							grade 2 events	6892	6267	59336	7147	32949	16390
								2%	2%	13%	2%	8%	4%
							grade 3 events	3013	3028	7058	3248	14441	7745
								1%	1%	1%	1%	3%	2%
							grade 4 events	3058	3052	6896	3101	14424	7331
								1%	1%	1%	1%	3%	2%
							grade 5 events	10838	12137	30819	12904	35832	16998
								3%	4%	6%	4%	9%	4%
							grade 6 events	5568	5660	100135	6867	86350	19666
								1%	2%	22%	2%	22%	5%
							grade 7 events	236032	223348	201819	234430	184154	259294
								84%	83%	45%	83%	47%	73%

2.2 Compared Parameters

Parameter	Planned	Actual	Parameter	Planned	Actual
Instrument	ACIS	ACIS	Obspar format version number	7	7
Detector	ACIS-235678	ACIS-235678	Obspar file type	PREDICTED	ACTUAL
Grating	NONE	NONE	Obspar update status	NONE	UPDATED
Data mode	VFAINT	VFAINT	Number of optional ACIS chips dropped	0	0
Observation mode	POINTING	POINTING	On-chip summing requested	N	N
[deg] Pointing RA	185.047713	185.0292013664938	Subarray requested	NONE	NONE
[deg] Pointing Dec	29.268540	29.29048394900558	Alternating exposures requested	N	N
[deg] Pointing Roll	95.417034	95.58271666719934	[s] Primary exposure time	0.000000	3.2
[mm] SIM focus pos	-0.684267	-0.6828225247311905			
[mm] SIM defocus	0	0.001444936568705701			
[mm] SIM translation stage pos	-190.132523	-190.1425803651734			
[mm] SIM translation stage offset	0	0.01005778216563158			
[s] Observation start time (MET)	223820640.184000	223819291.58012			
Observation start date	2005-02-03T12:22:56	2005-02-03T12:01:31			
[s] Observation end time (MET)	223858640.184000	223859461.33194			
Observation end date	2005-02-03T22:56:16	2005-02-03T23:11:01			
Read mode	TIMED	TIMED			

2.3 Aspect

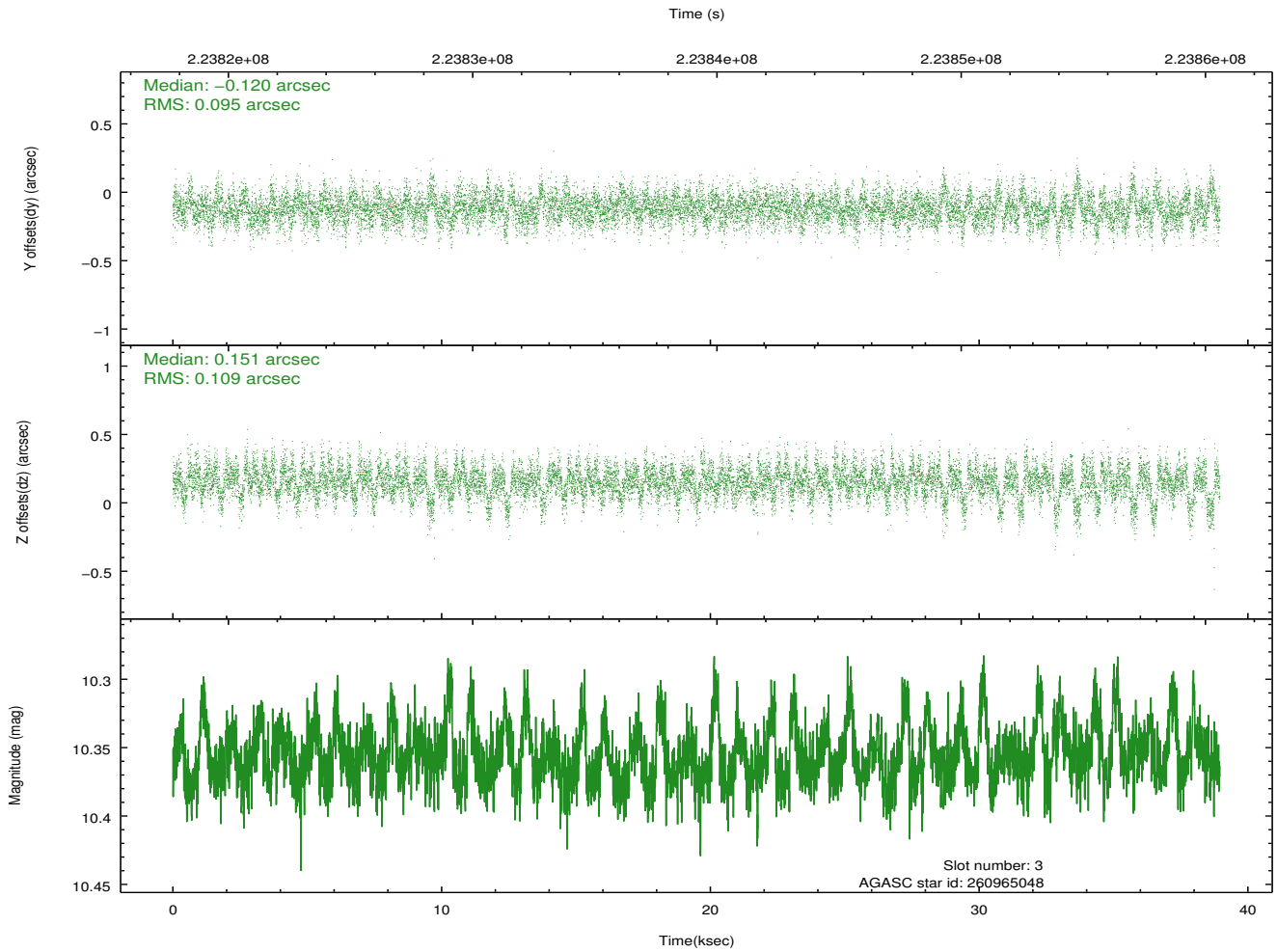
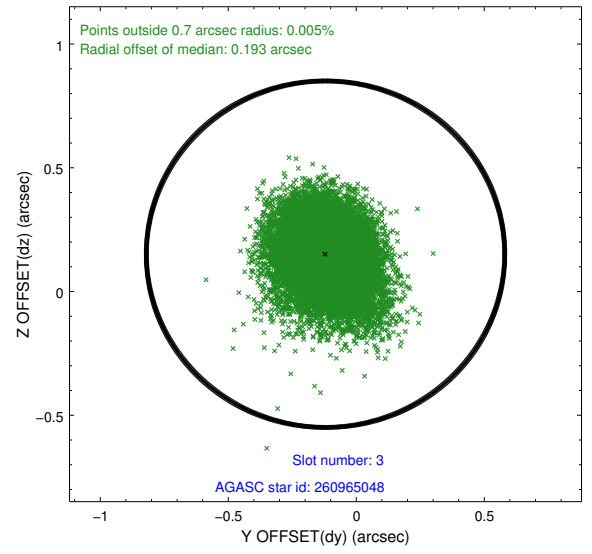
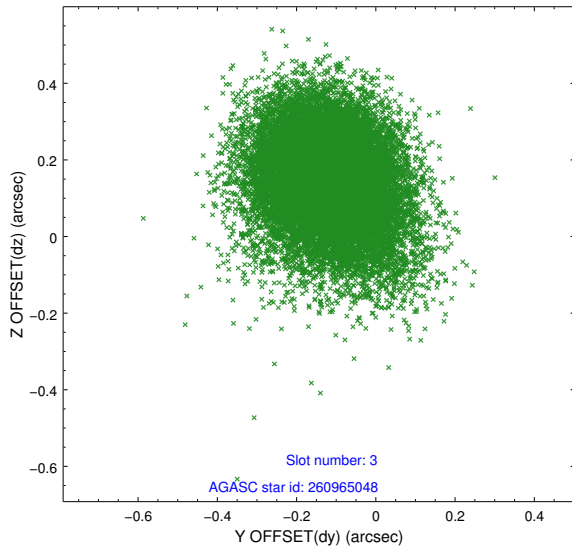


Slot Statistics

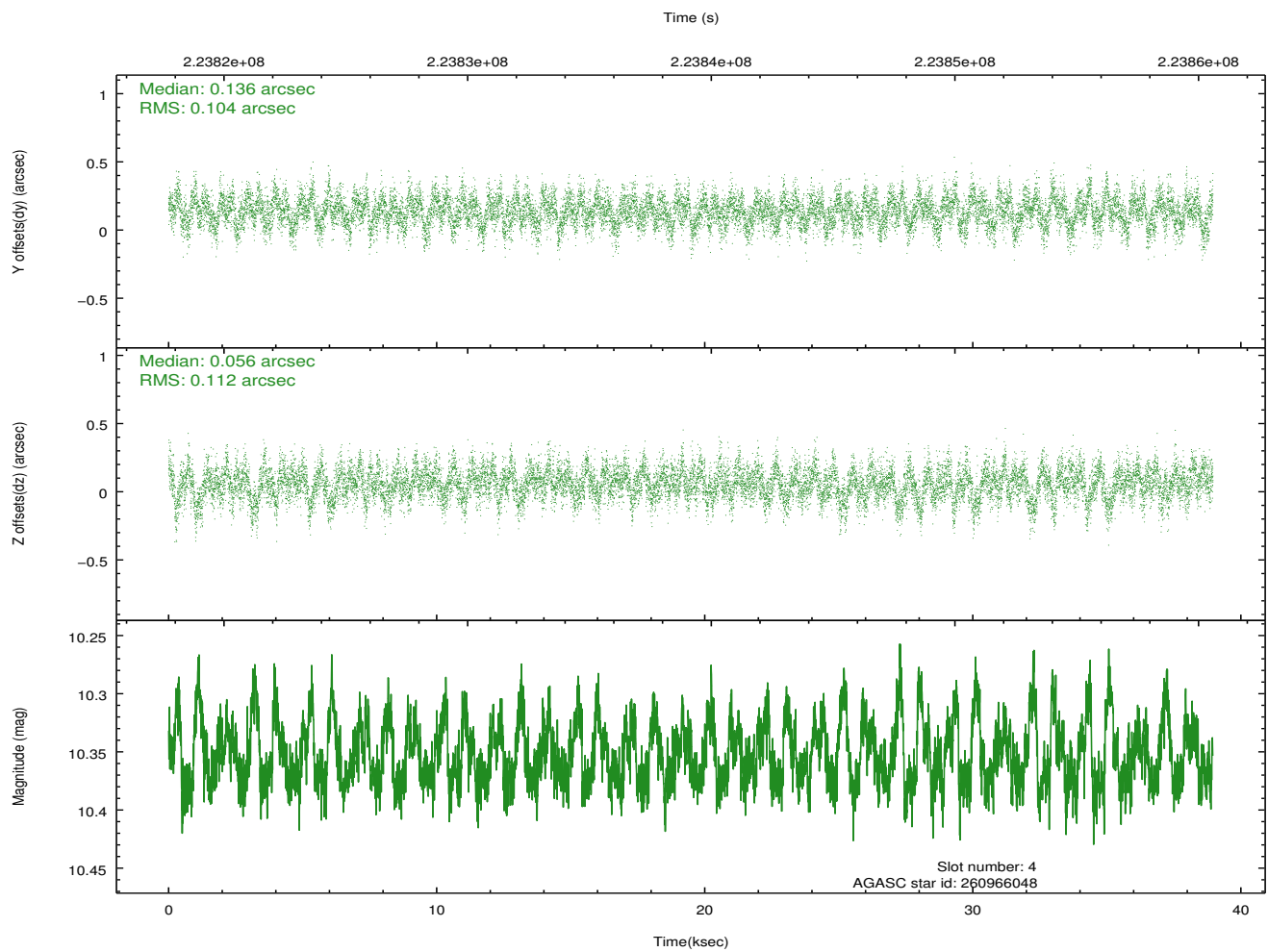
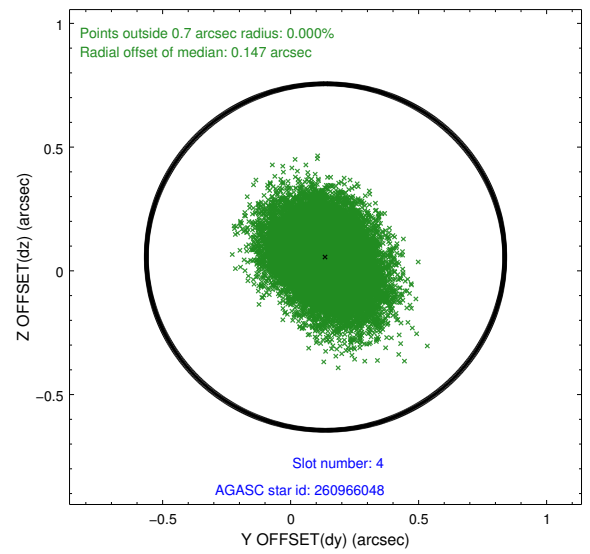
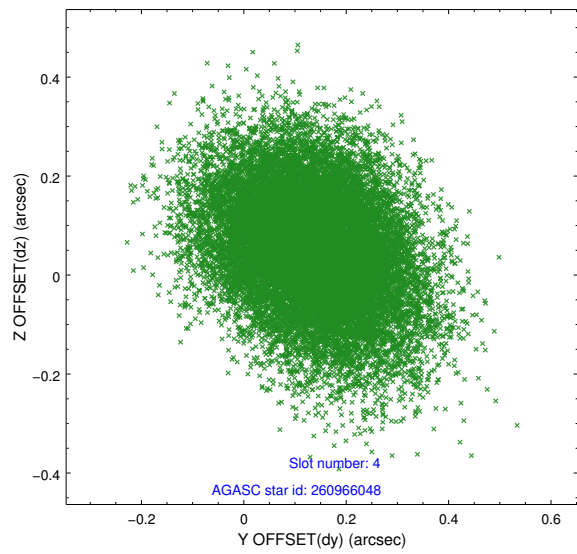
slot	status	id	mag	n_pts	med_dy	med_dz	dr1	dr2	ra	dec	mean_y	mean_z
0	FID	ACIS-S-1	7.19	9502	0.050	-0.021	0.006	0.011	0.000000	0.000000	935.49	-1726.20
1	FID	ACIS-S-5	7.24	9502	-0.089	0.039	0.007	0.011	0.000000	0.000000	-1813.64	171.39
2	FID	ACIS-S-6	7.35	9502	0.018	-0.006	0.008	0.013	0.000000	0.000000	400.99	815.33
3	GUIDE	260965048	10.36	18494	-0.120	0.151	0.149	0.257	185.120667	29.682199	1461.13	-367.00
4	GUIDE	260966048	10.35	18979	0.136	0.056	0.161	0.266	185.169624	29.533581	914.46	-469.61
5	GUIDE	260967848	10.35	18983	-0.177	-0.050	0.157	0.255	184.894103	29.822741	2031.71	289.77
6	GUIDE	260969864	10.17	18912	0.149	0.060	0.163	0.266	184.508412	28.652291	-2043.85	1905.50
7	GUIDE	260979504	6.11	19004	0.015	-0.210	0.096	0.163	184.377399	28.937186	-982.33	2214.77

2.4 Star Slots

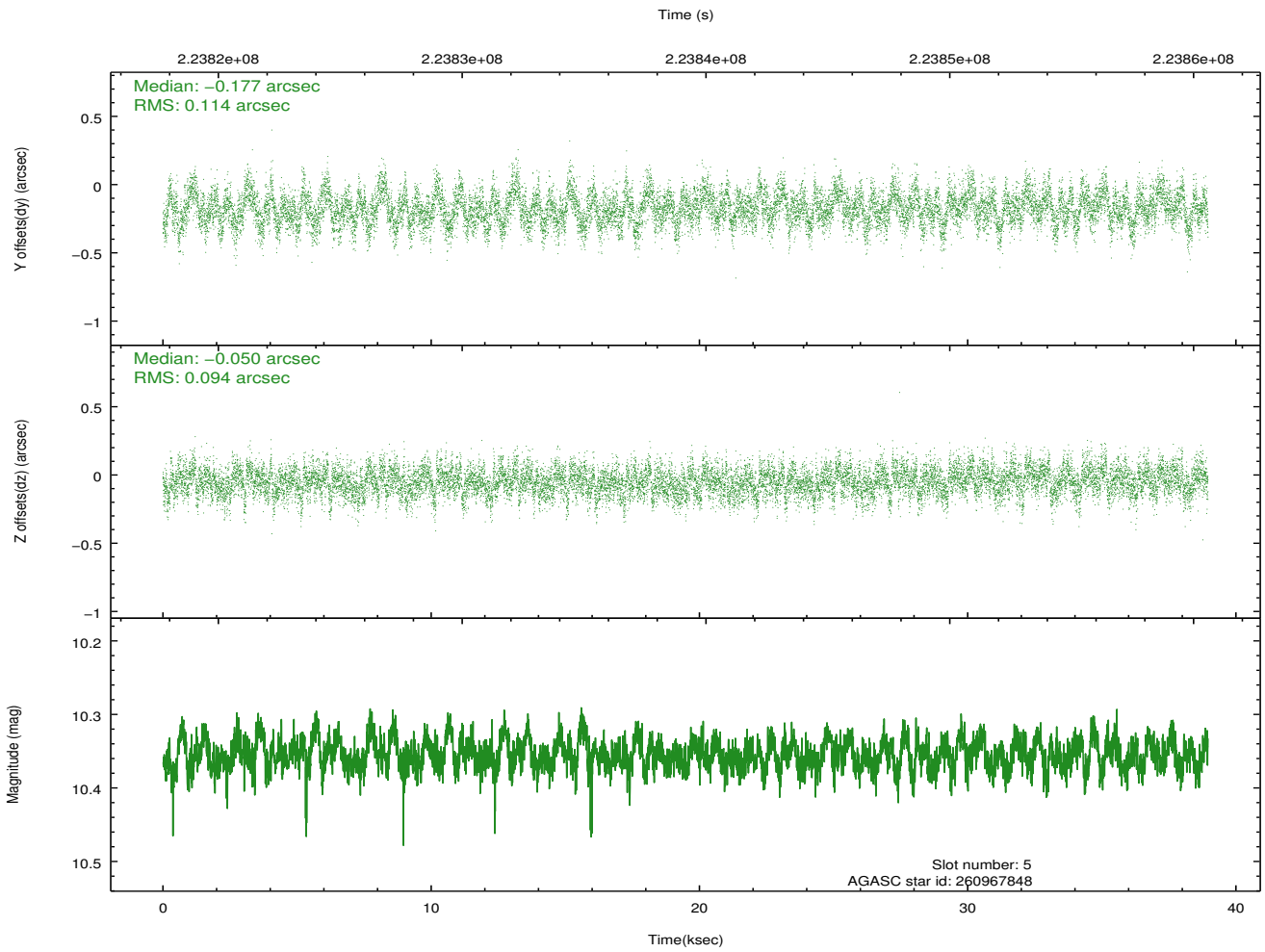
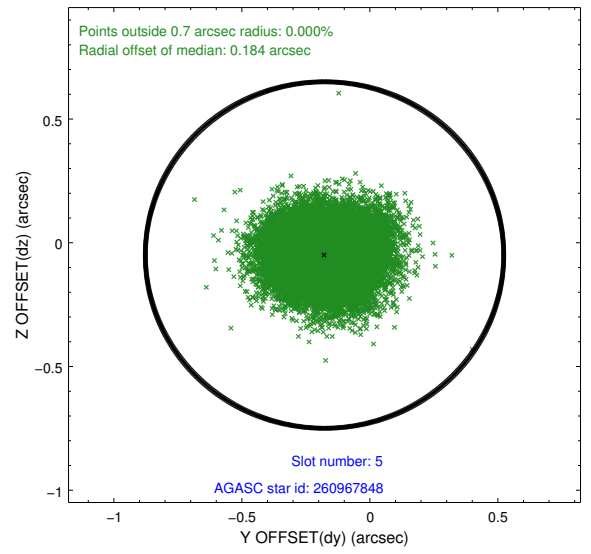
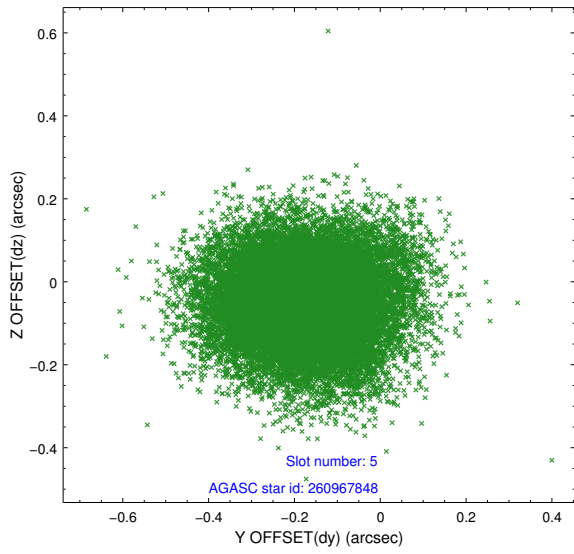
2.4.1 Slot 3



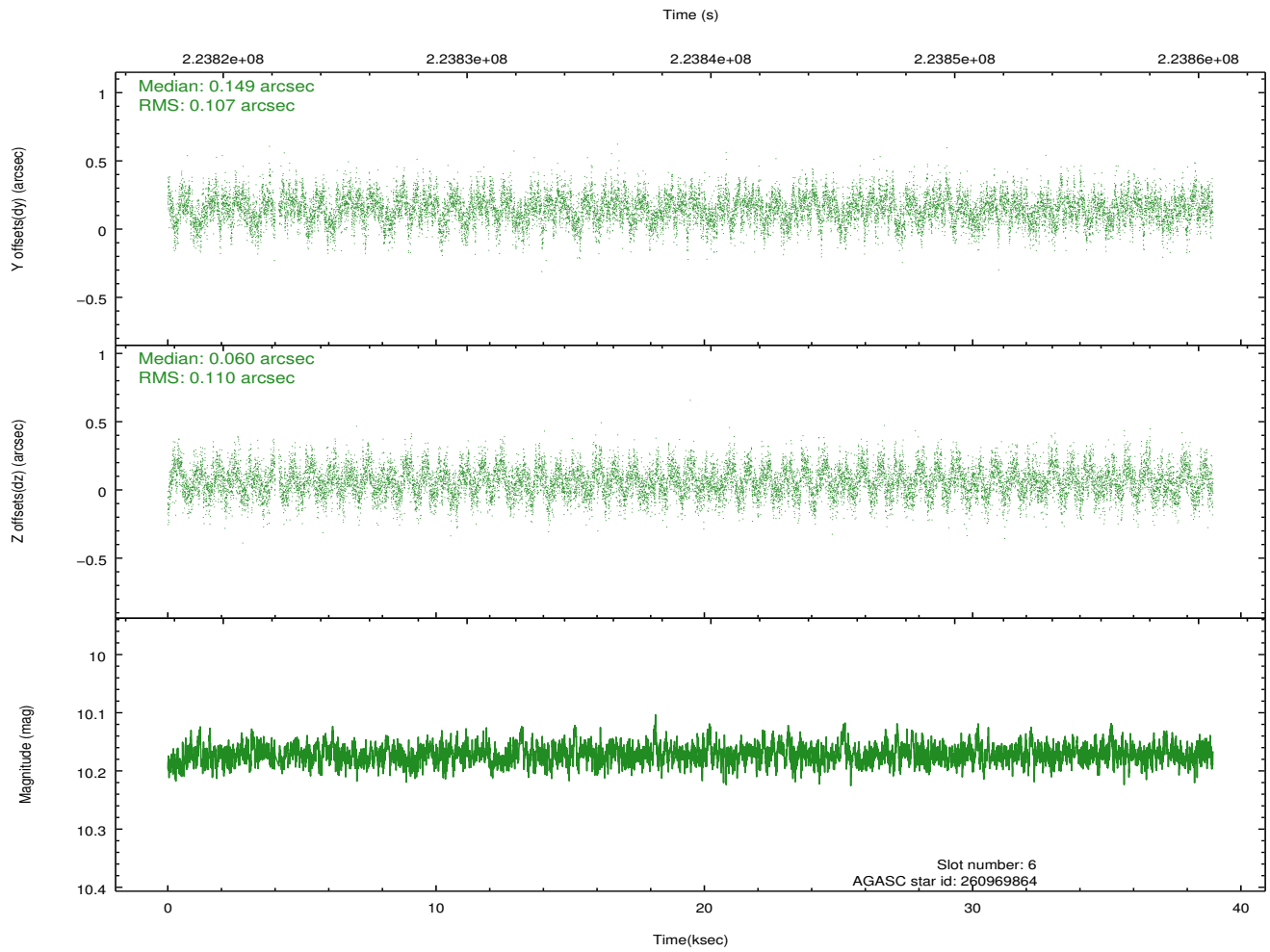
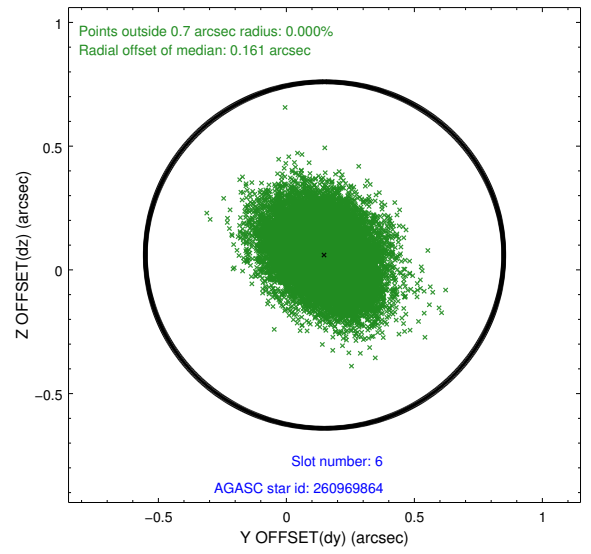
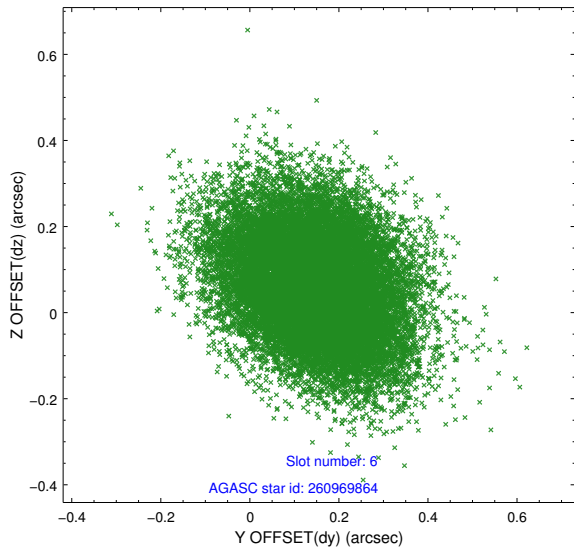
2.4.2 Slot 4



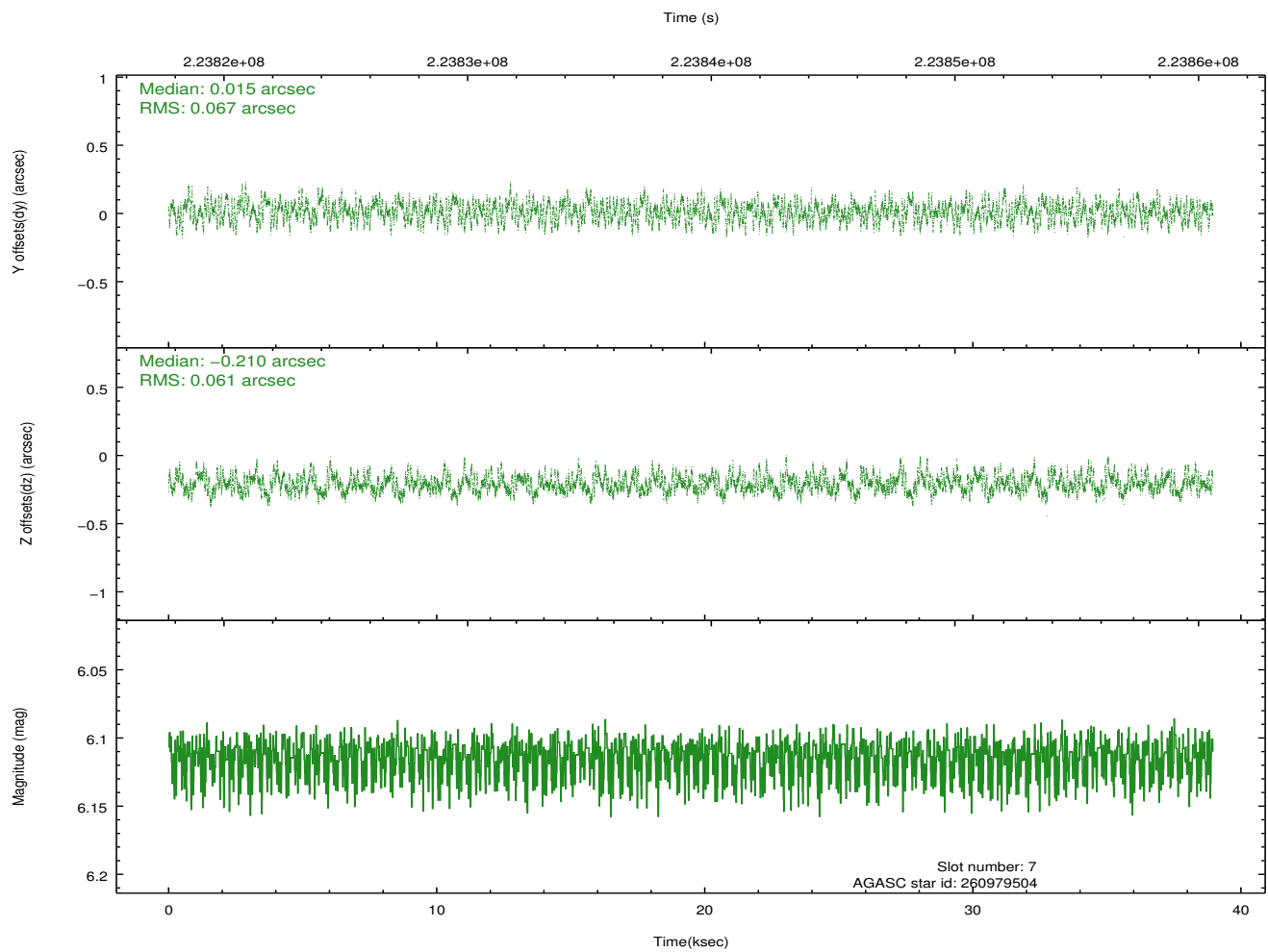
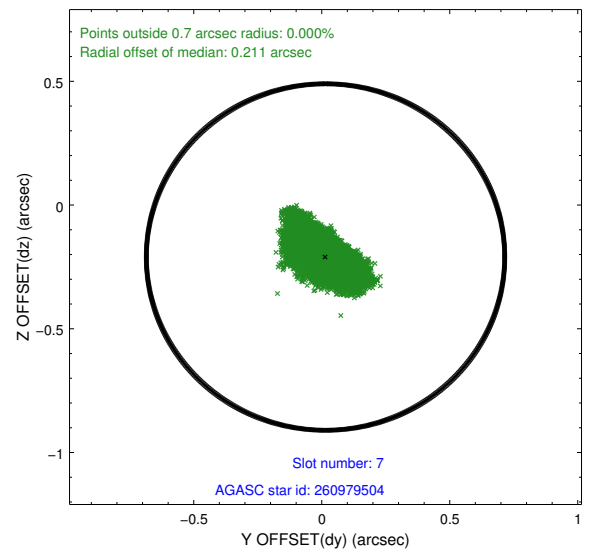
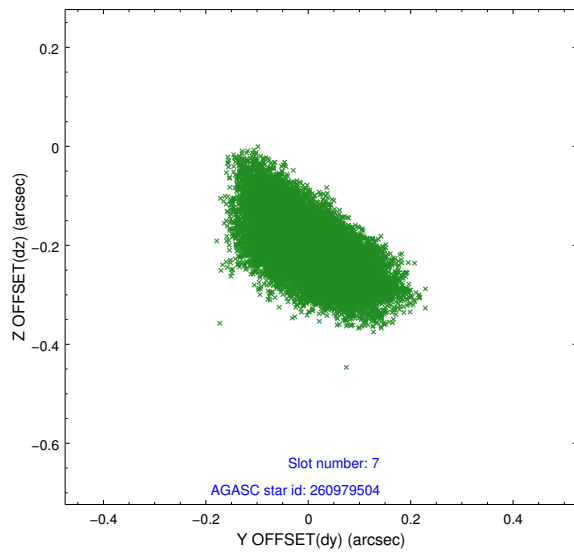
2.4.3 Slot 5



2.4.4 Slot 6

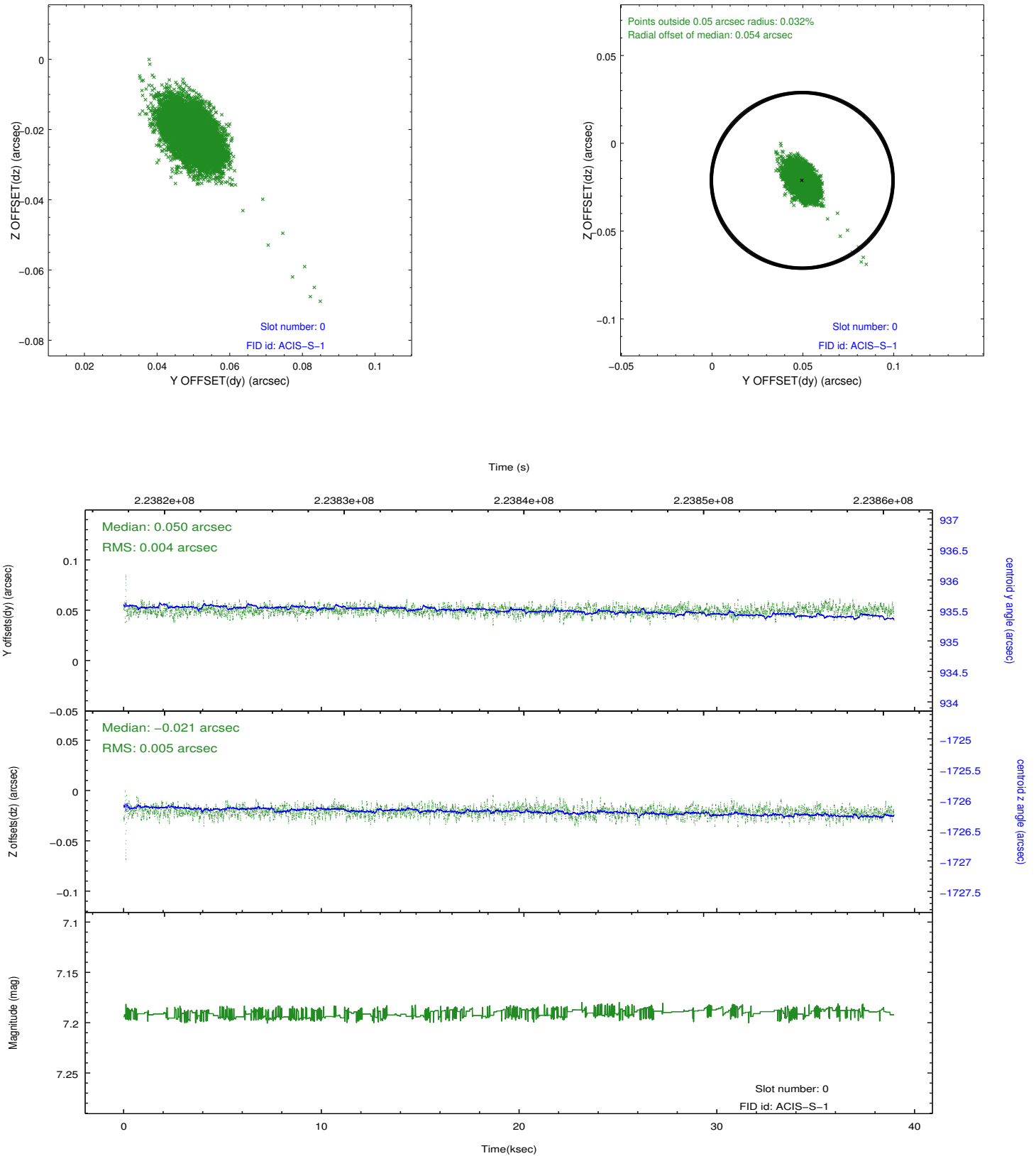


2.4.5 Slot 7

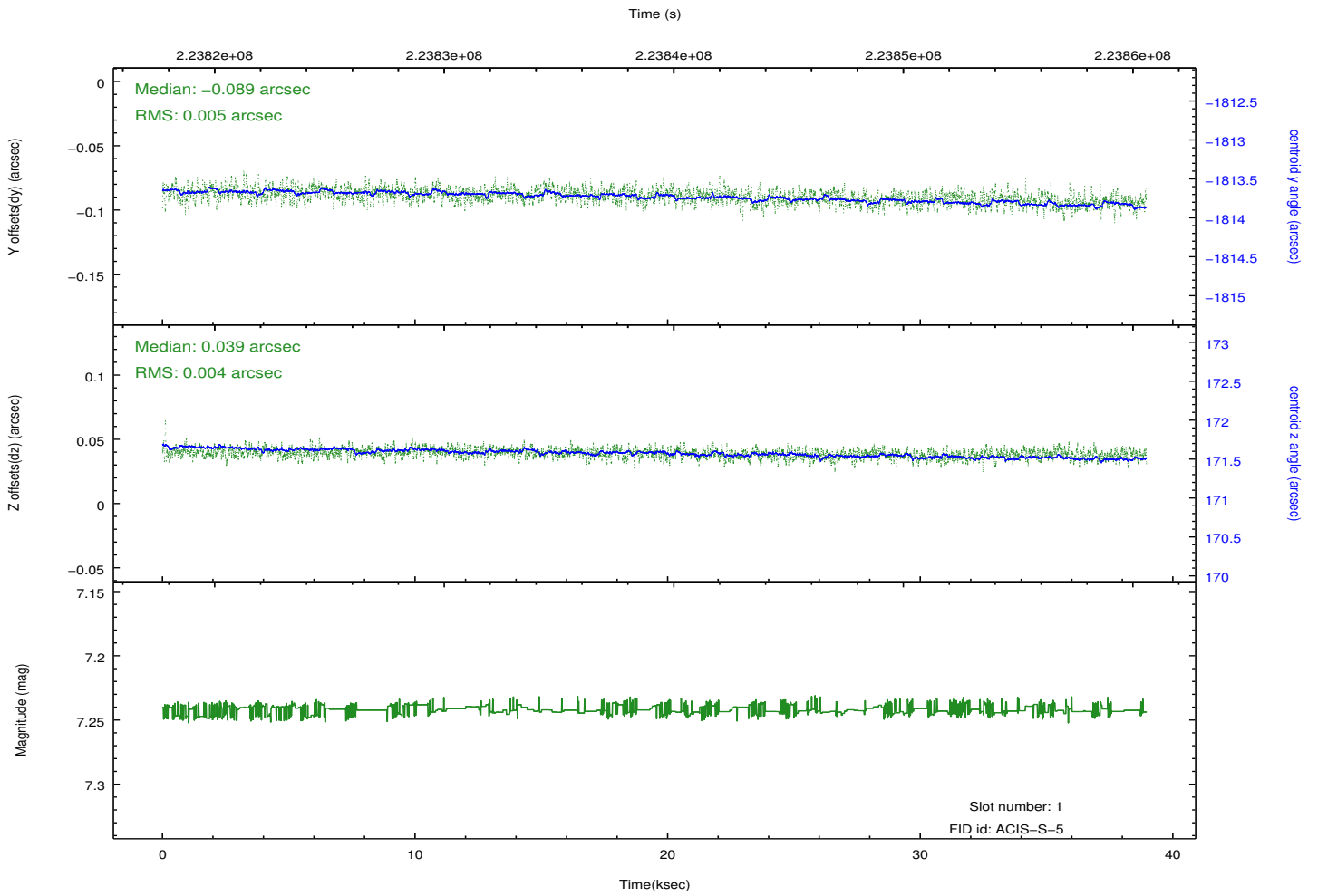
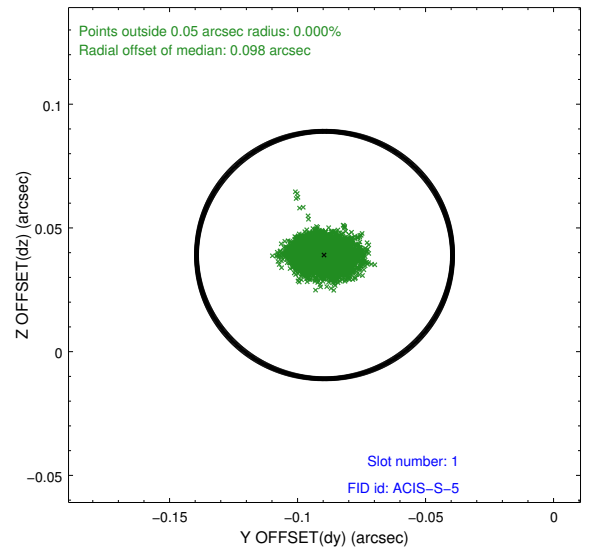
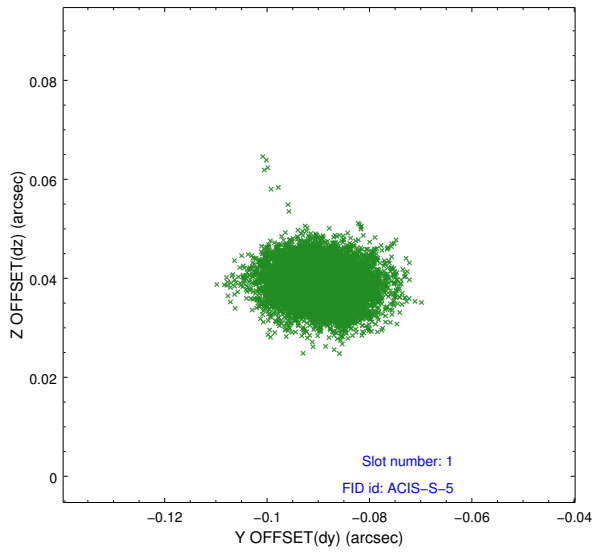


2.5 FID Slots

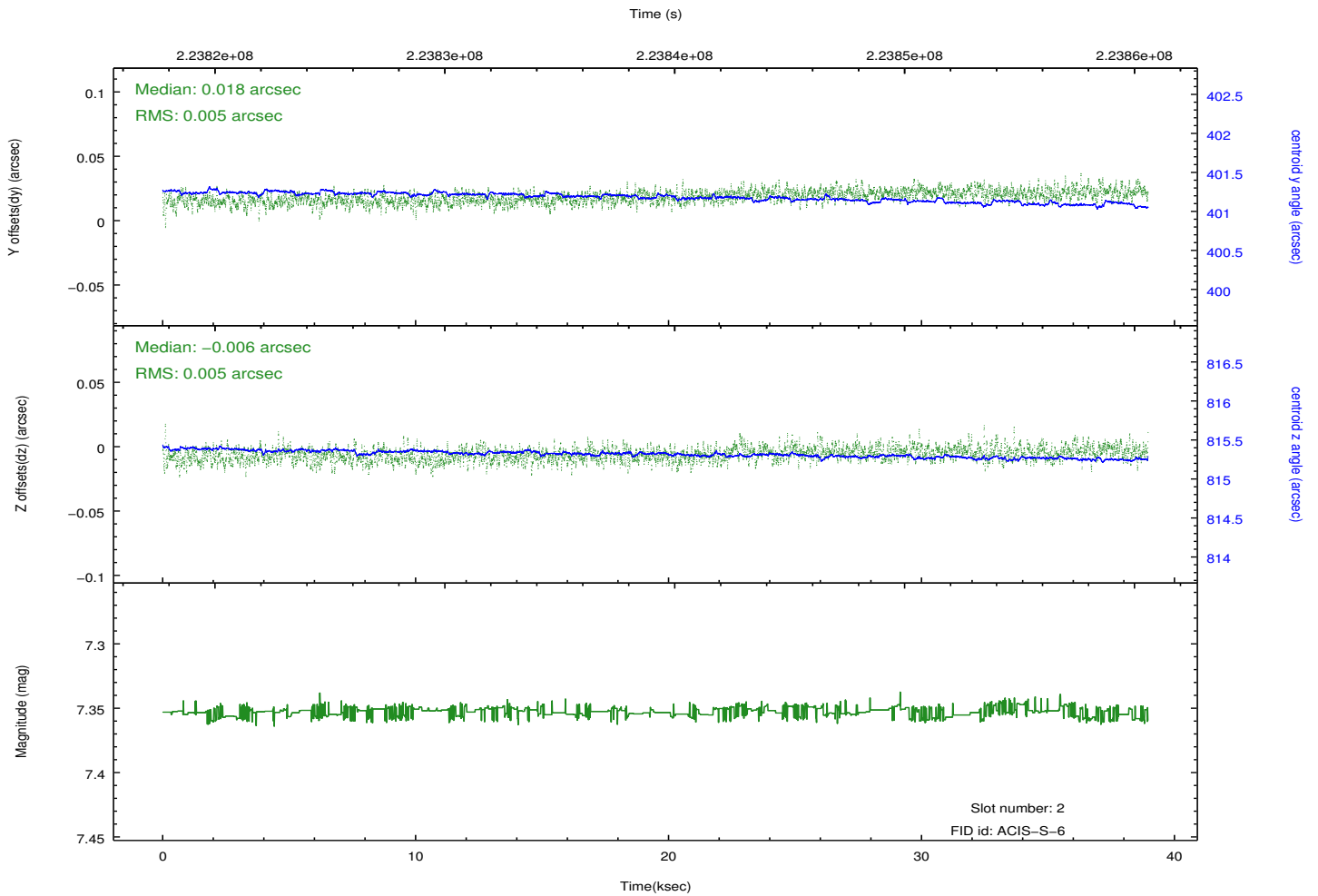
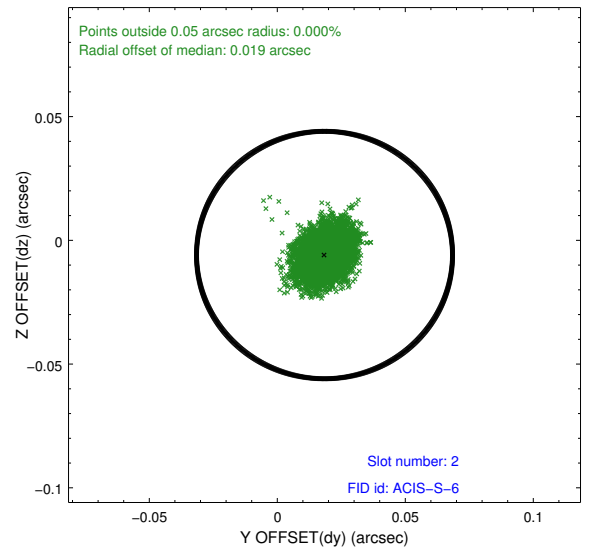
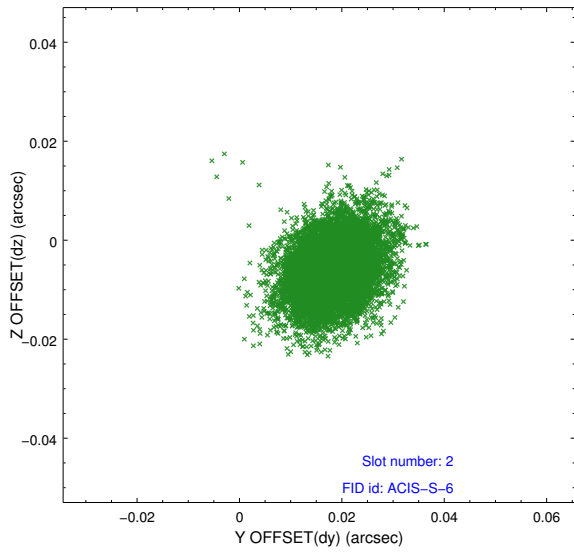
2.5.1 Slot 0



2.5.2 Slot 1



2.5.3 Slot 2



A Summary

A.1 Status

V&V Scientist	Jen Lauer
V&V Date (YYYY-MM-DD)	2013.01.09
V&V Edition	1
V&V Disposition and Status	OK
V&V Charge Time	37.94239

A.2 Comments