

V&V Reference Report

L2 ASCDS Version : 8.4.5

Observation 4851 - L2 Version 4
Chandra X-Ray Center

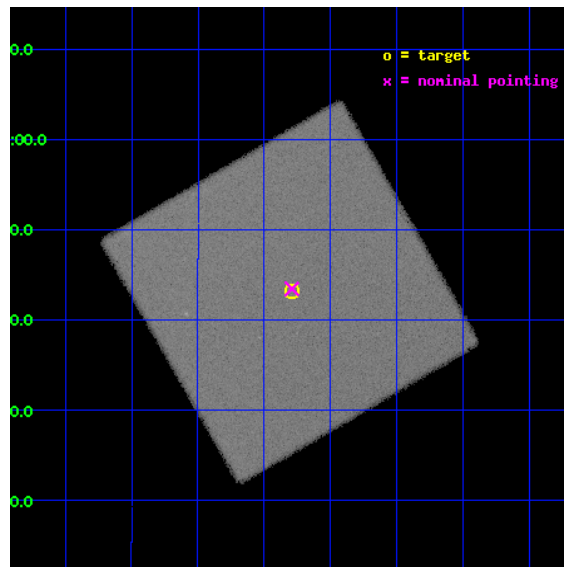
L2 Processing Date : Dec 1 2012

Contents

1	Front	2
2	OBI	3
2.1	OBI	3
2.1.1	Images	3
2.1.2	Parameters	4
2.1.3	Events	4
2.2	Compared Parameters	5
2.3	Aspect	6
2.4	Star Slots	9
2.4.1	Slot 3	9
2.4.2	Slot 4	10
2.4.3	Slot 5	11
2.4.4	Slot 6	12
2.4.5	Slot 7	13
2.5	FID Slots	14
2.5.1	Slot 0	14
2.5.2	Slot 1	15
2.5.3	Slot 2	16
A	Summary	17
A.1	Status	17
A.2	Comments	17

1 Front

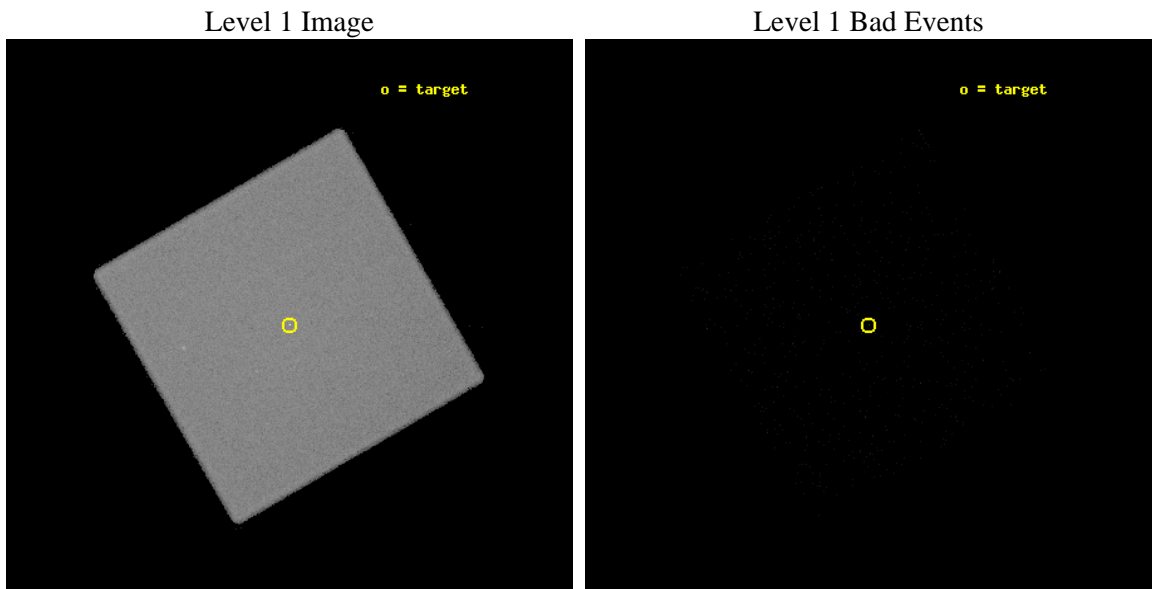
seq_num	700933	Sequence number
obs_id	4851	Observation id
title	EXTENDED EMISSION AND ACCRETION RATES IN BL LACERTAE OBJECTS	Propo
observer	Dr. Rita Sambruna	Principal investigator
object	PKS 2254+074	Source name
ra_targ	344.322083	Observer's specified target RA [deg]
dec_targ	7.720083	Observer's specified target Dec [deg]
ra_nom	344.32264946942	Nominal RA [deg]
dec_nom	7.7242384963972	Nominal Dec [deg]
roll_nom	105.00195658062	Nominal Roll [deg]
revision	4	Processing version of data
ontime	20543.050906032	[s]
livetime	20416.210525778	Ontime multiplied by DTCOR
l2events	655295	Number of level 2 events



2 OBI

2.1 OBI

2.1.1 Images



2.1.2 Parameters

obi_num	0	Obi number	sched_exp_time	20670.000000	[s] Scheduled observation exposure time
ascdsver	8.4.5	Processing system revision	ontime	20543.050906032	[s]
caldbver	4.5.2	 	l1events	988585	Number of level 1 events
date	2012-12-01T01:42:12	Date and time of file creation			
revision	4	Processing version of data			

2.1.3 Events

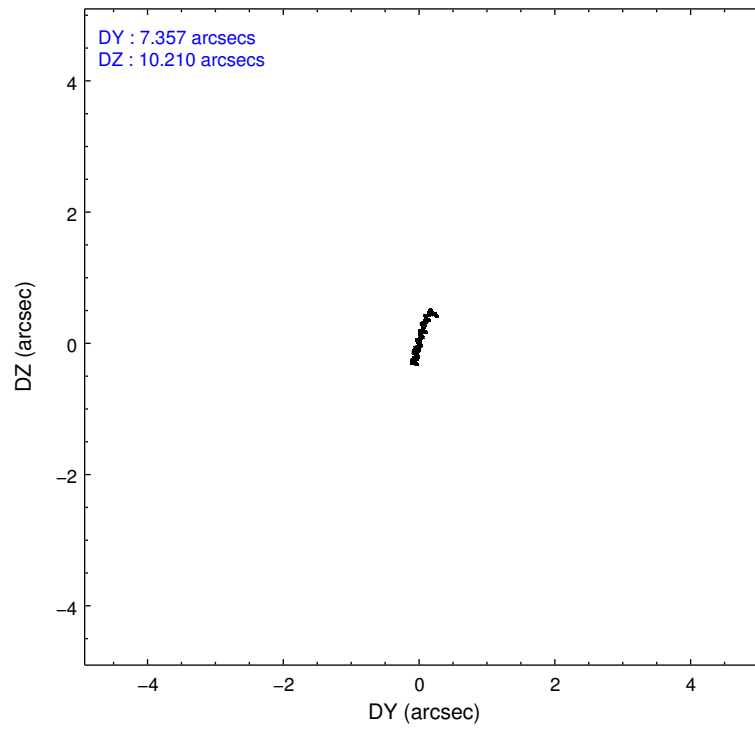
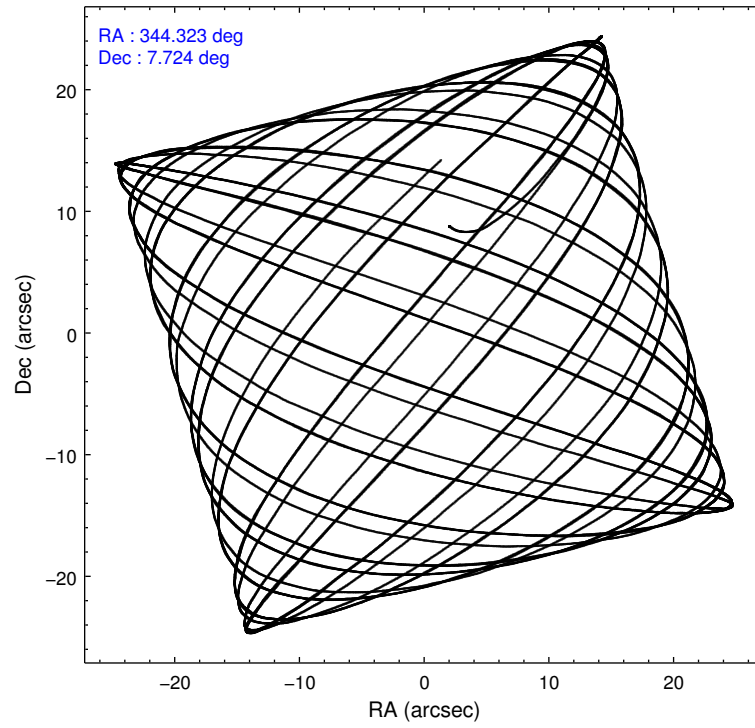
Level 1 Events

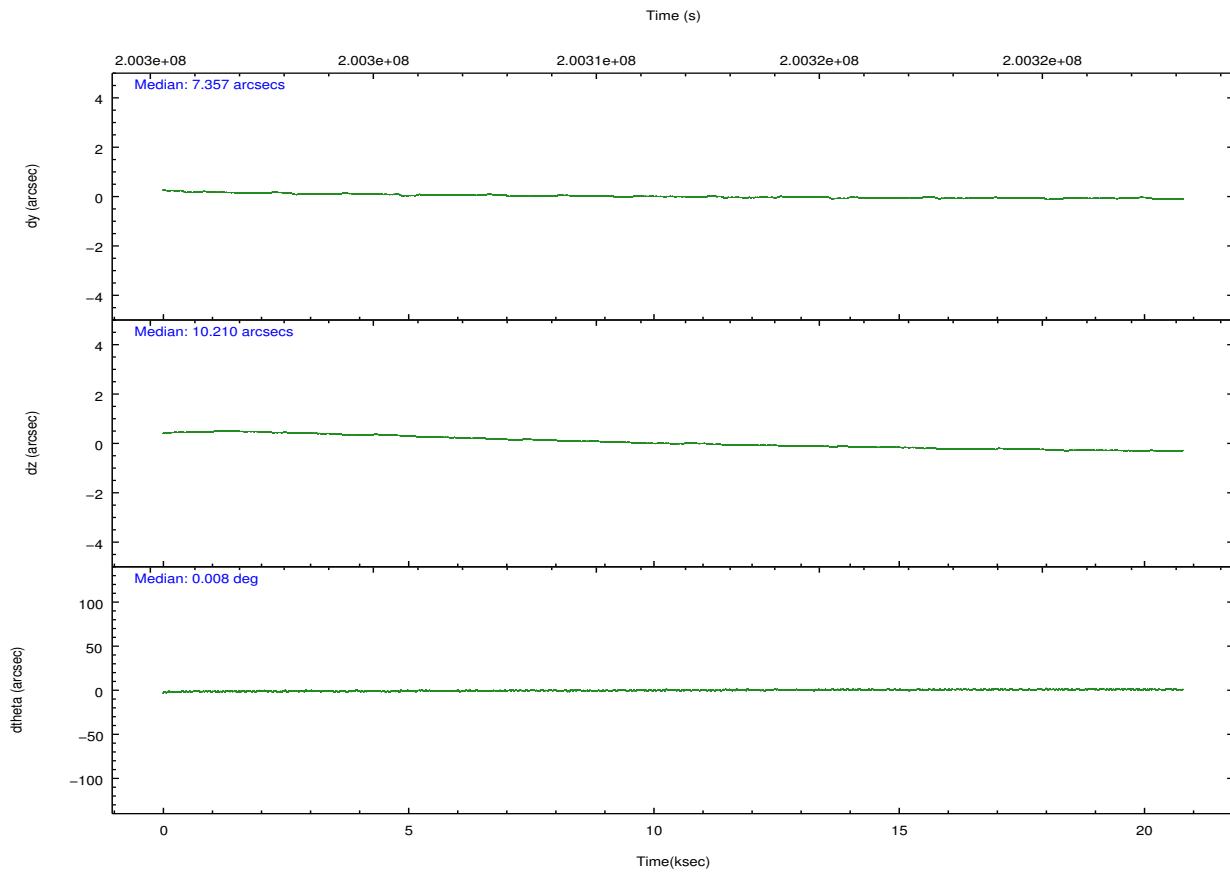
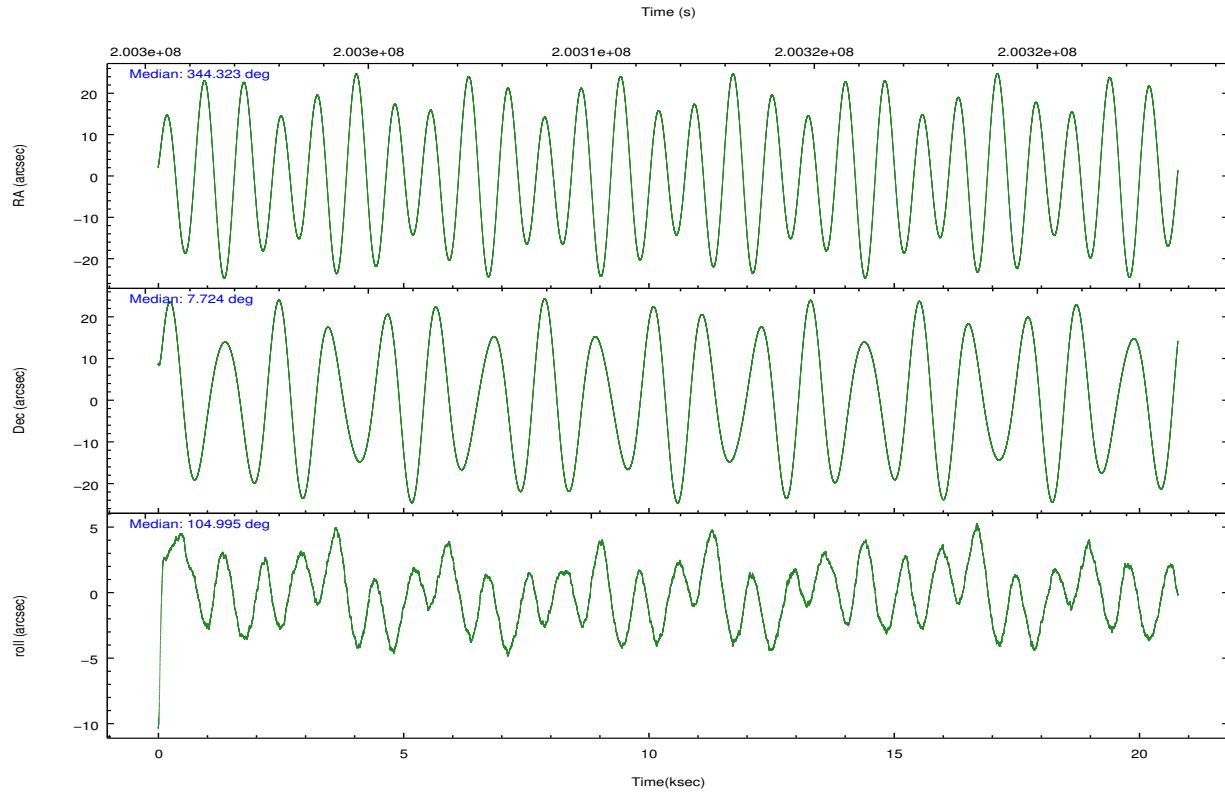
	segment 0
level 1 events	988585
rejected events	8166
rejected %	0%

2.2 Compared Parameters

Parameter	Planned	Actual	Parameter	Planned	Actual
Instrument	HRC	HRC	Obspar format version number	7	7
Detector	HRC-I	HRC-I	Obspar file type	PREDICTED	ACTUAL
Grating	NONE	NONE	Obspar update status	NONE	UPDATED
Data mode	OBSERVING	OBSERVING			
Observation mode	POINTING	POINTING			
[deg] Pointing RA	344.342432	344.3226494694223			
[deg] Pointing Dec	7.705499	7.724238496397219			
[deg] Pointing Roll	105.094805	105.0019565806225			
[mm] SIM focus pos	-1.040293	-1.038866356238299			
[mm] SIM defocus	0	0.001426264420575141			
[mm] SIM translation stage pos	126.985494	126.9829799899862			
[mm] SIM translation stage offset	0	0.002508901615314585			
[s] Observation start time (MET)	200301441.184000	200300464.62997			
Observation start date	2004-05-07T07:16:17	2004-05-07T07:01:04			
[s] Observation end time (MET)	200322111.184000	200323778.7685			
Observation end date	2004-05-07T13:00:47	2004-05-07T13:29:38			

2.3 Aspect



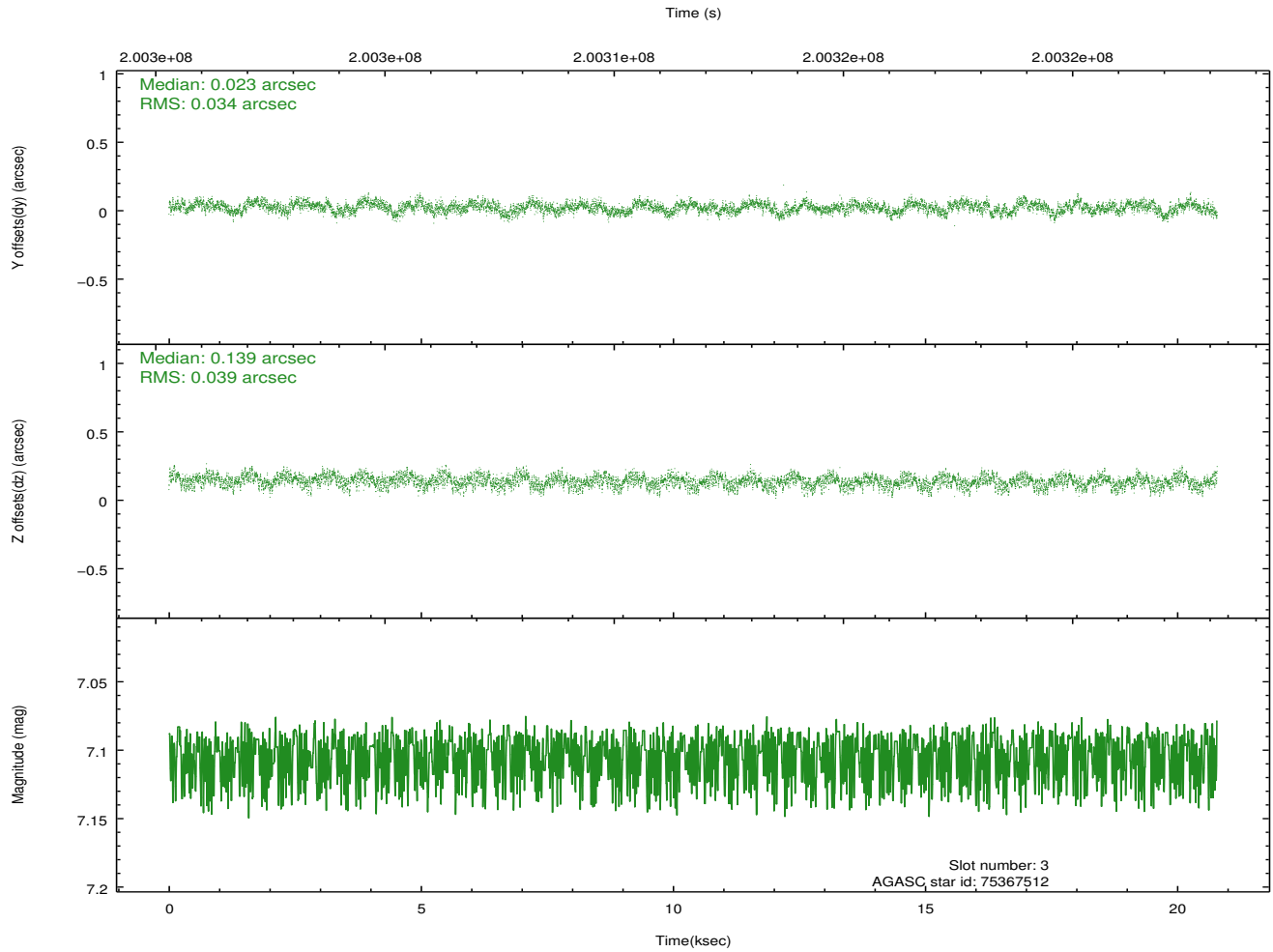
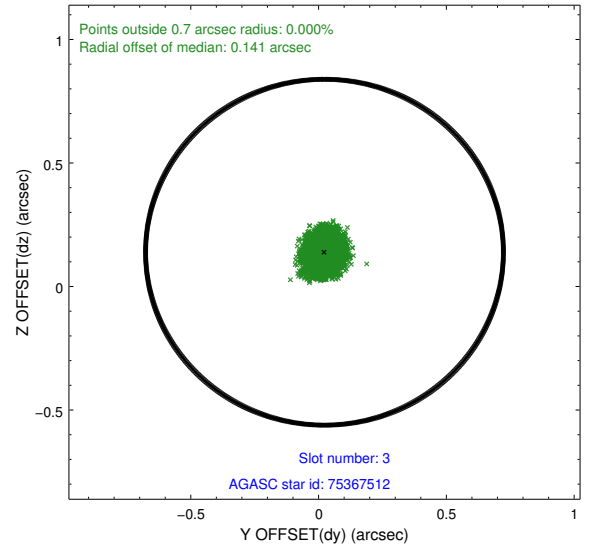
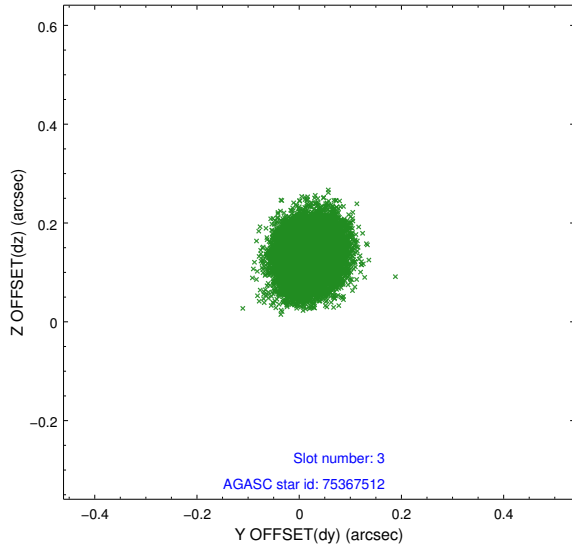


Slot Statistics

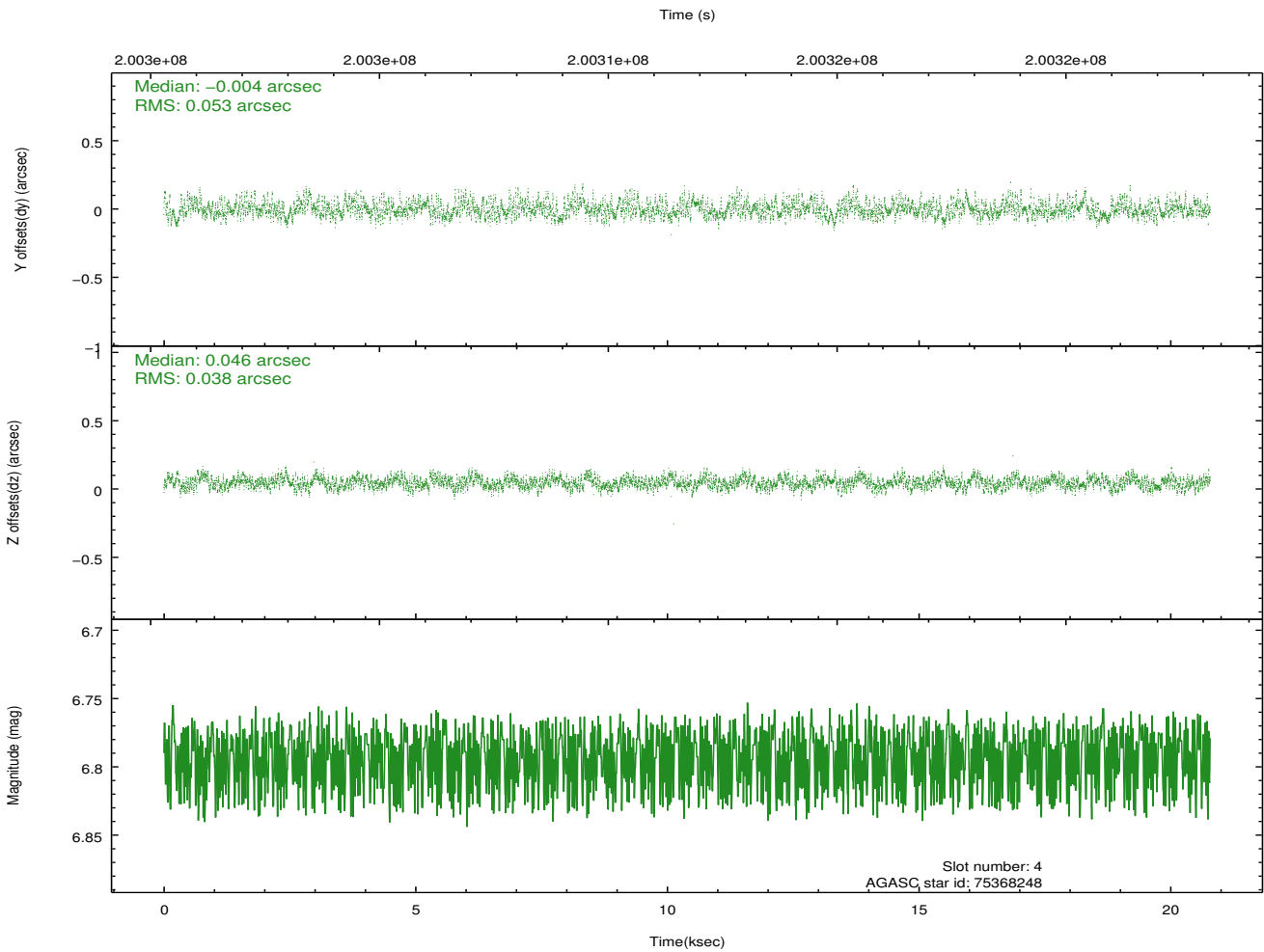
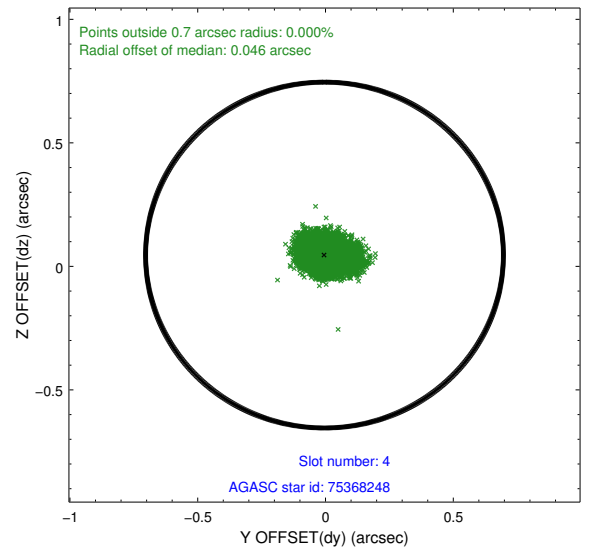
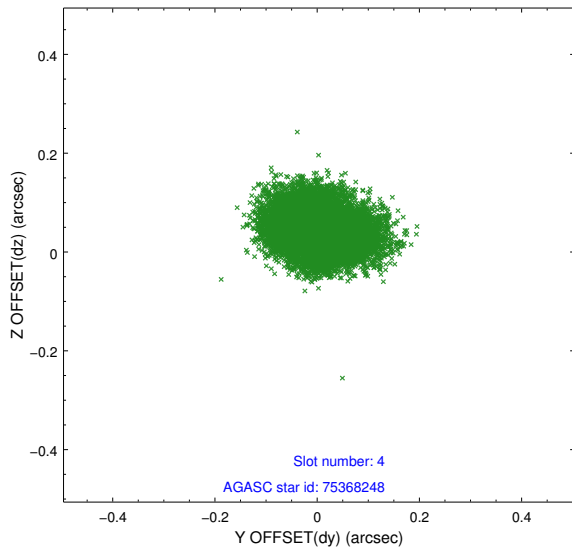
slot	status	id	mag	n_pts	med_dy	med_dz	dr1	dr2	ra	dec	mean_y	mean_z
0	FID	HRC-I-1	7.00	5071	-0.023	0.015	0.010	0.015	0.000000	0.000000	-762.98	-1298.18
1	FID	HRC-I-2	7.04	5071	0.117	-0.056	0.009	0.017	0.000000	0.000000	849.64	-1300.07
2	FID	HRC-I-3	7.09	5070	0.026	-0.049	0.007	0.012	0.000000	0.000000	-1191.27	1006.06
3	GUIDE	75367512	7.10	10142	0.023	0.139	0.056	0.088	344.948741	7.356320	-1775.74	-1762.82
4	GUIDE	75368248	6.79	10137	-0.004	0.046	0.070	0.112	344.677611	7.340077	-1581.55	-812.81
5	GUIDE	75370000	8.79	10132	-0.098	-0.353	0.095	0.151	343.811330	7.452557	-384.75	2067.10
6	GUIDE	76289944	8.04	10142	0.068	0.106	0.077	0.131	345.026815	7.383794	-1752.25	-2057.69
7	GUIDE	151135528	7.80	10140	0.008	0.068	0.068	0.104	344.600252	7.631155	-497.56	-818.69

2.4 Star Slots

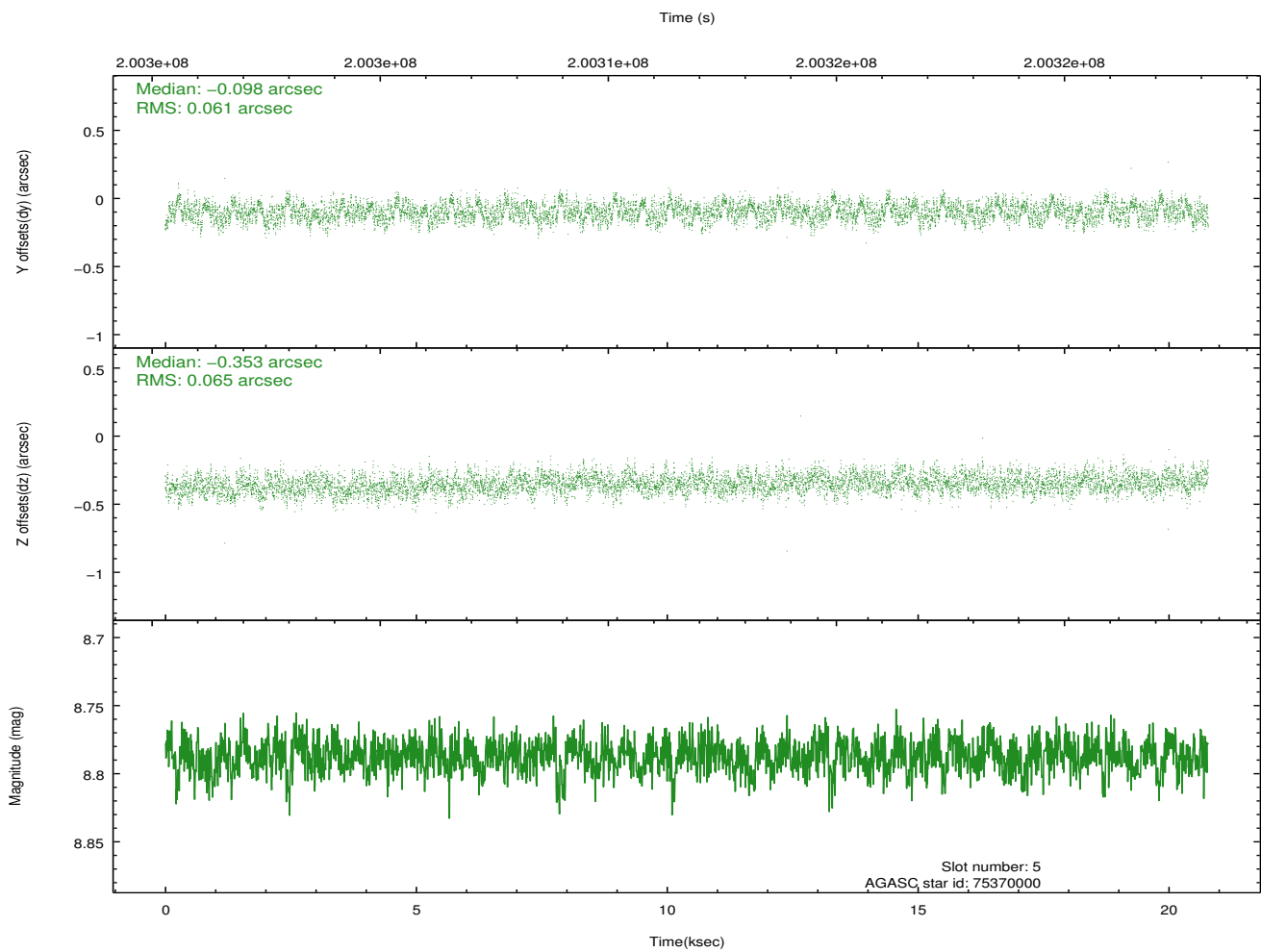
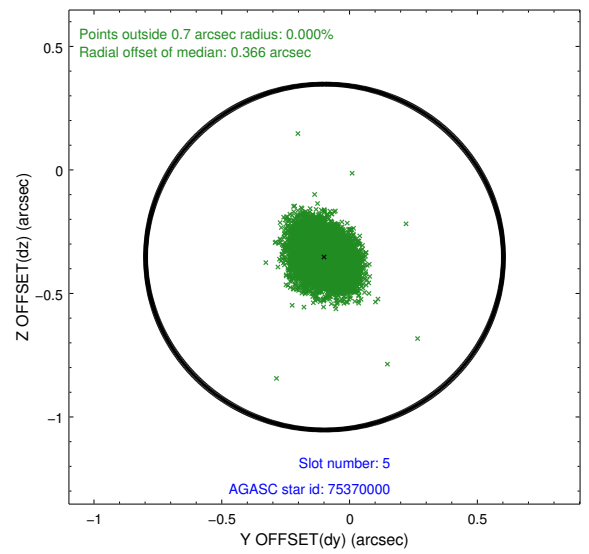
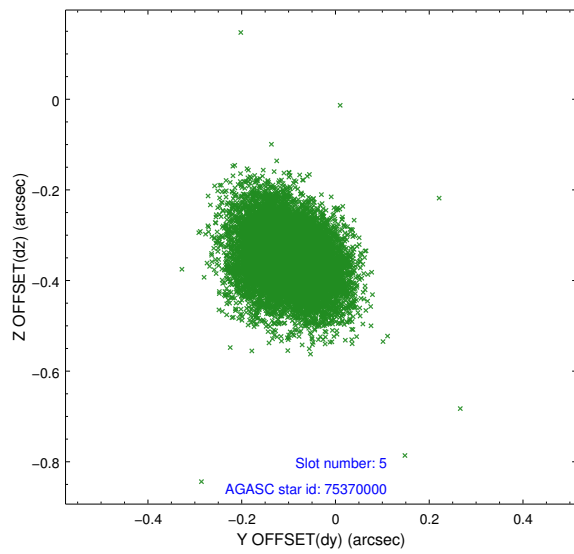
2.4.1 Slot 3



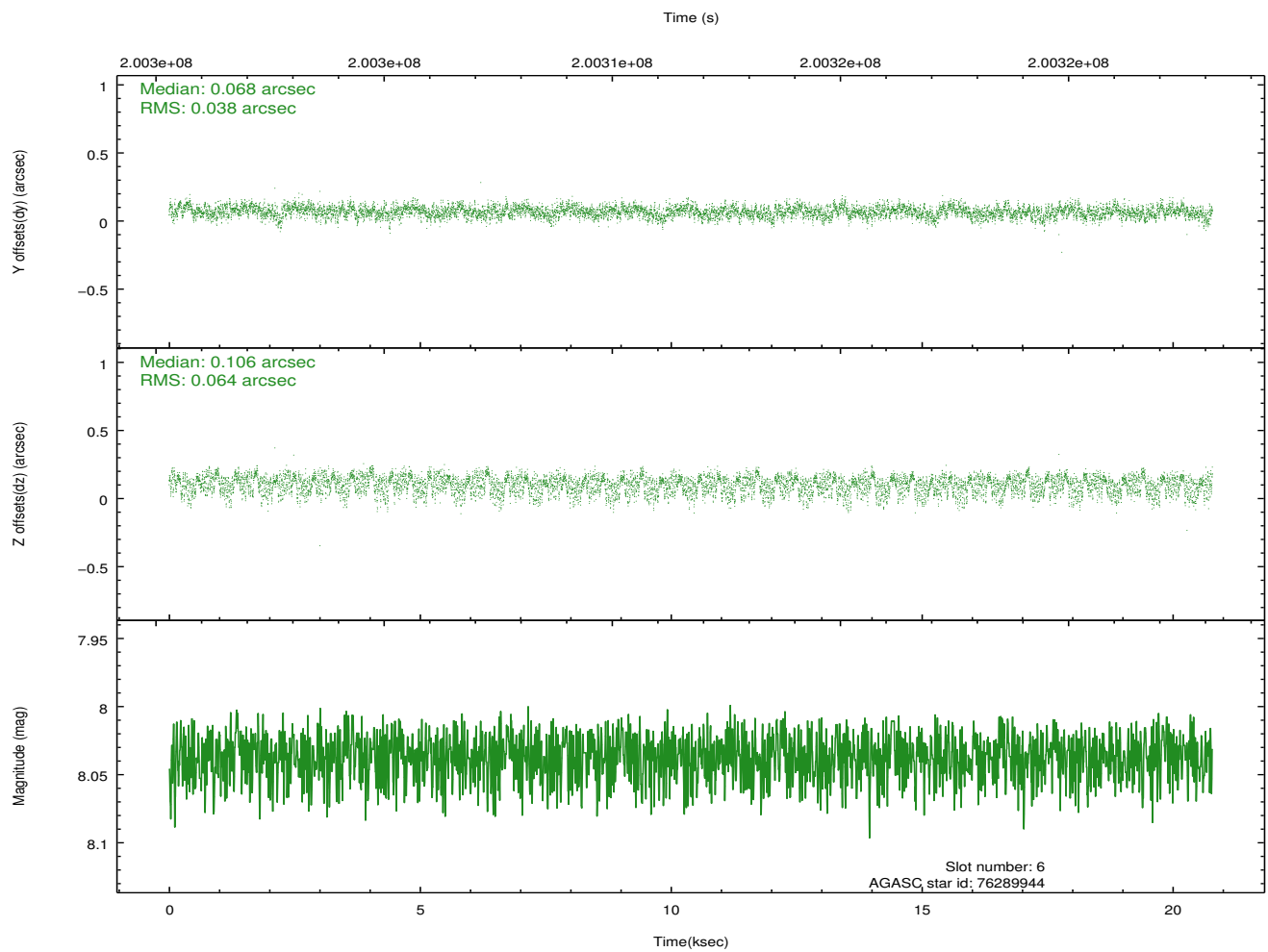
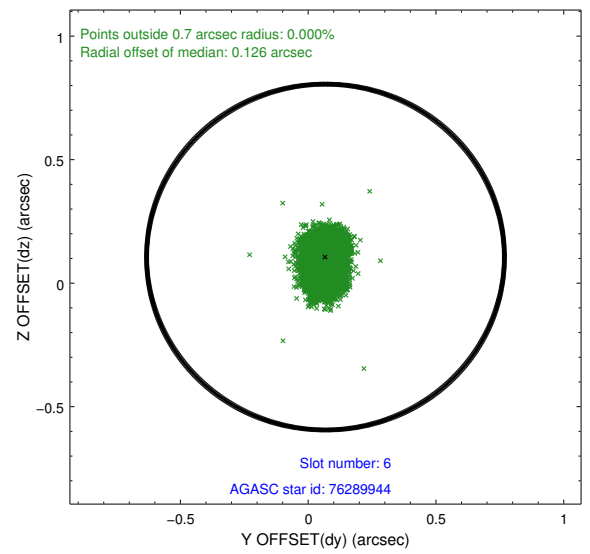
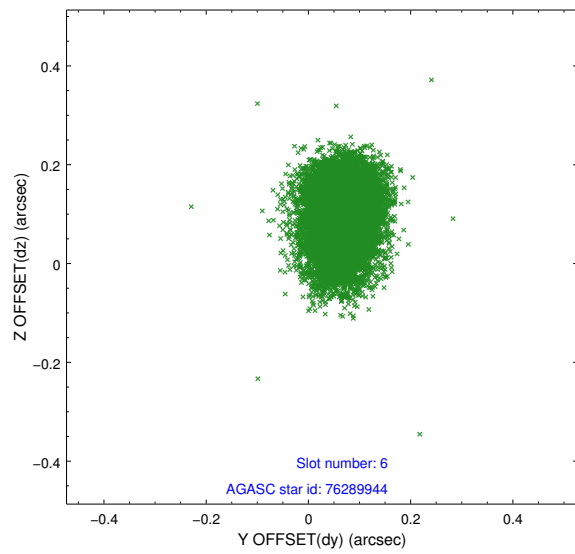
2.4.2 Slot 4



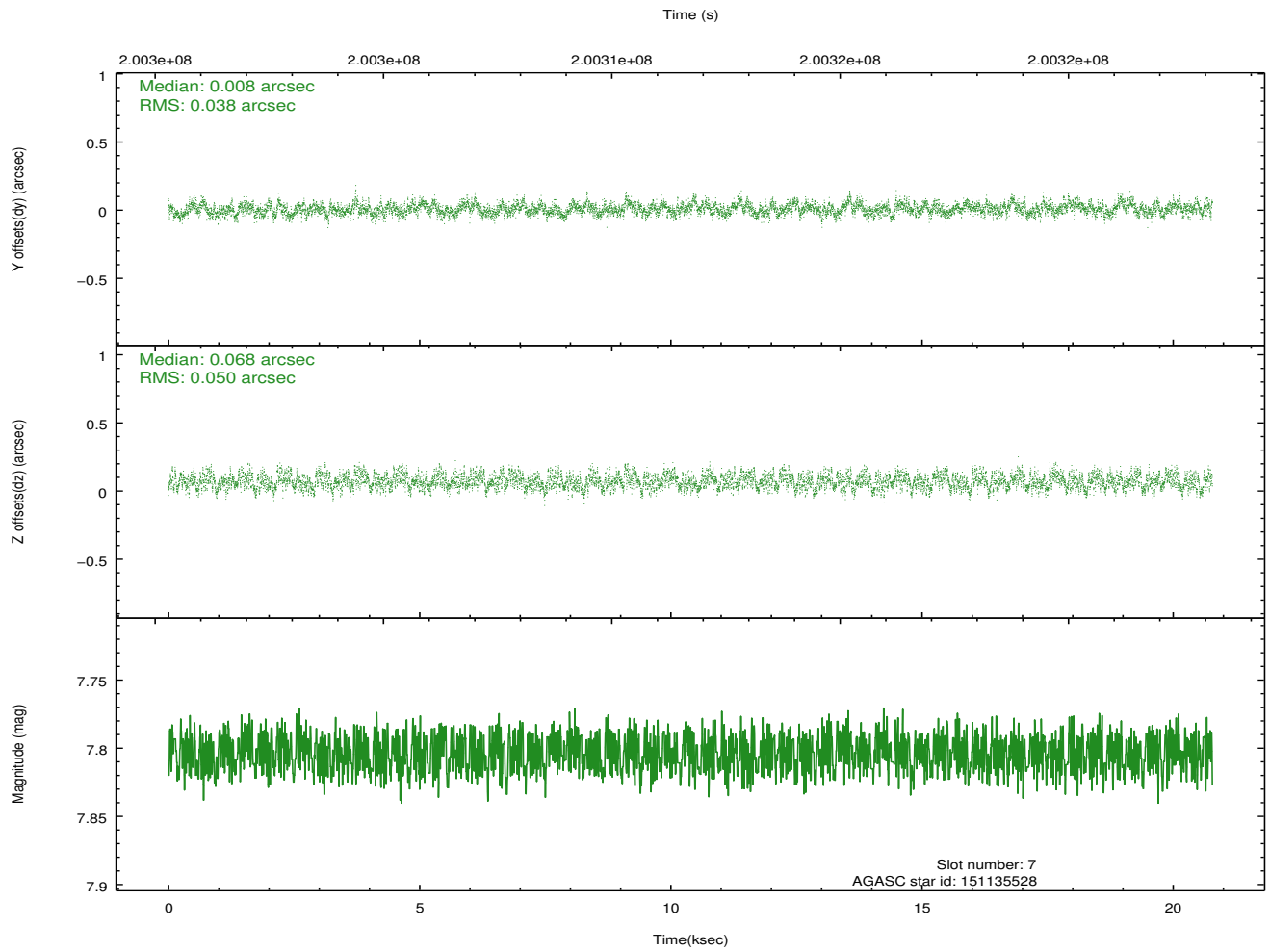
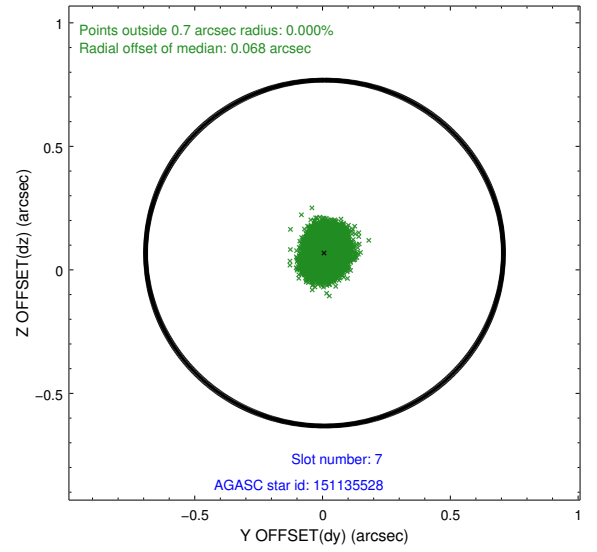
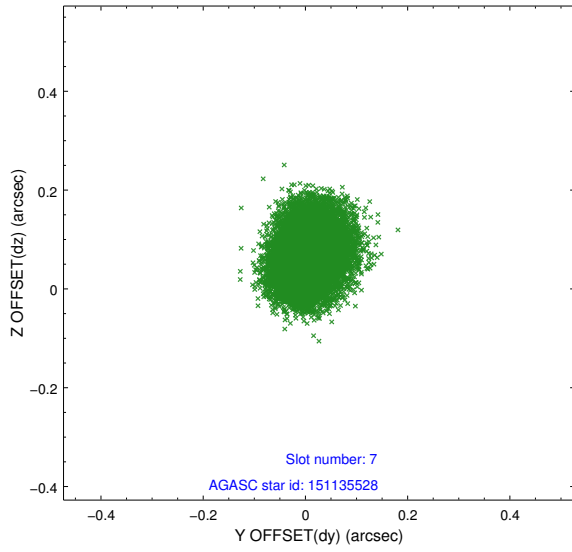
2.4.3 Slot 5



2.4.4 Slot 6

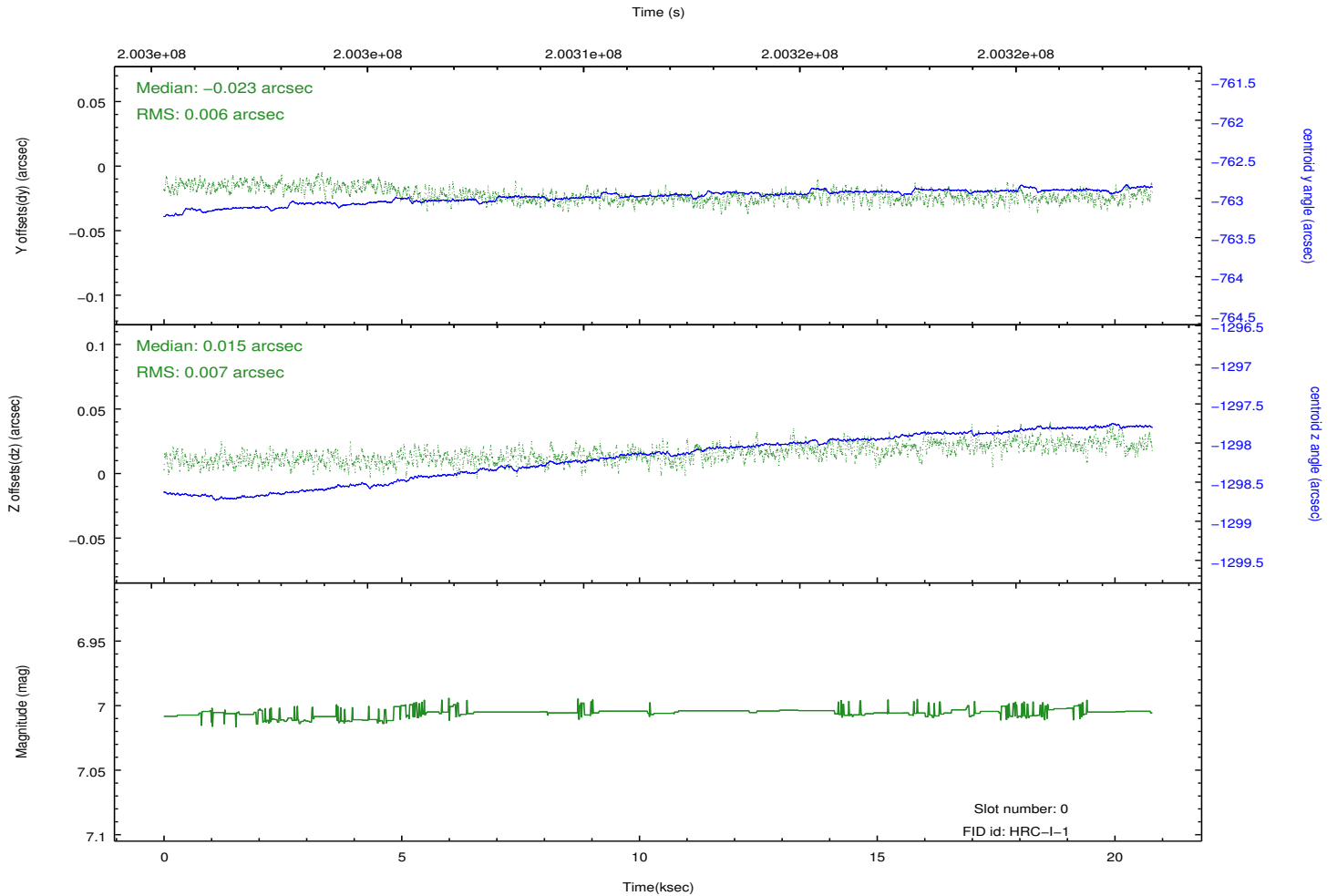
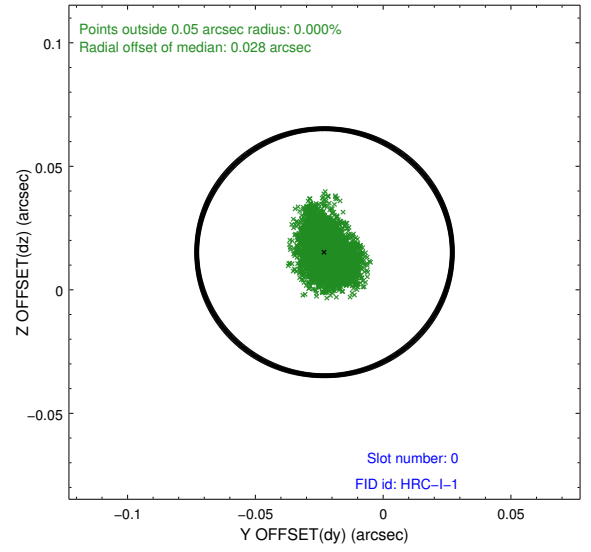
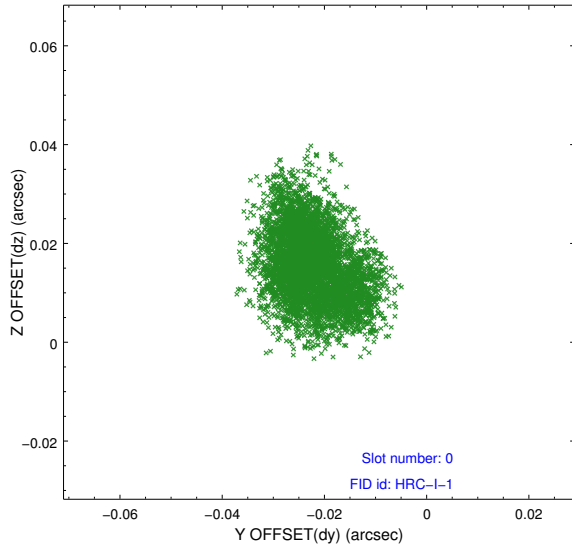


2.4.5 Slot 7

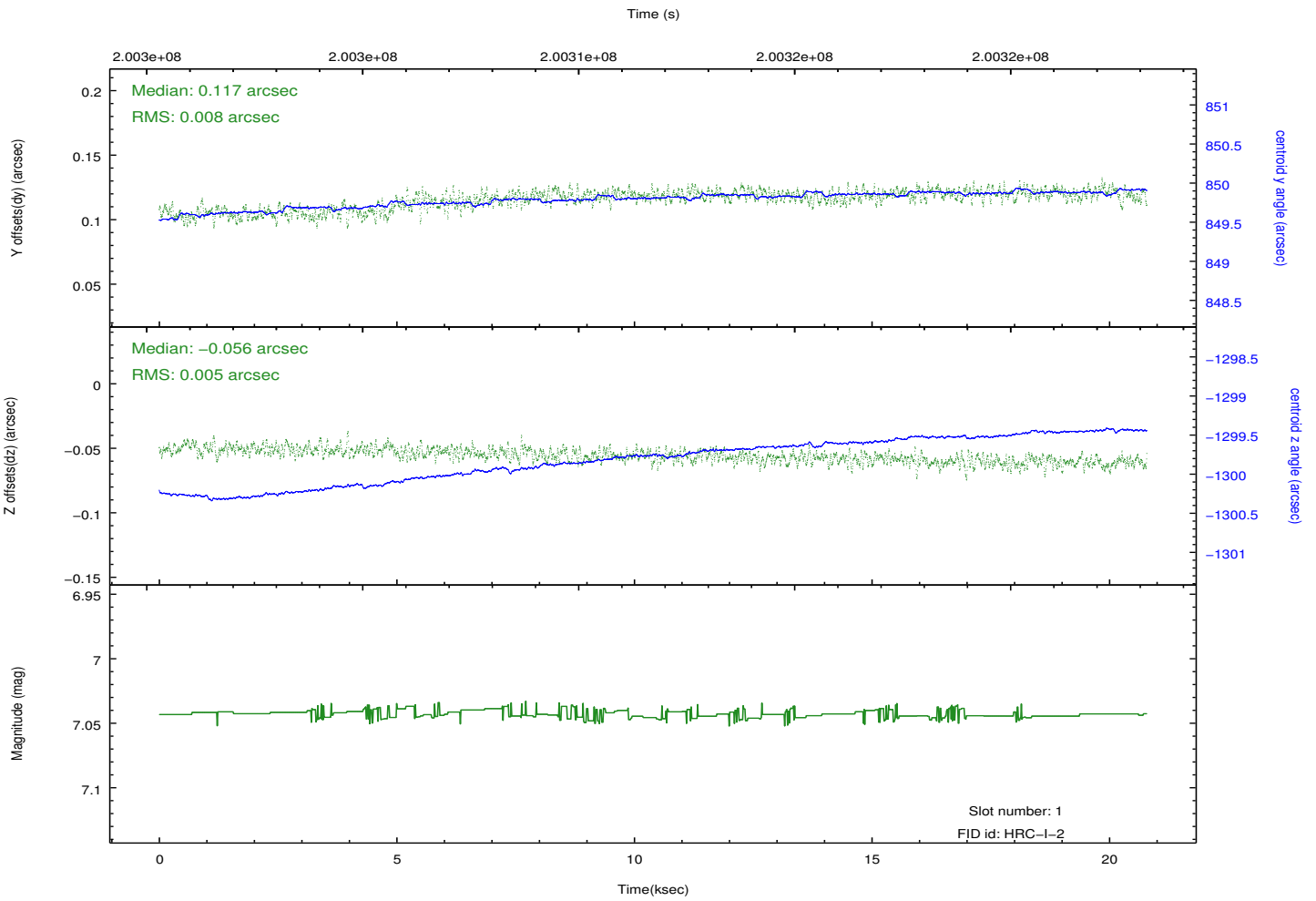
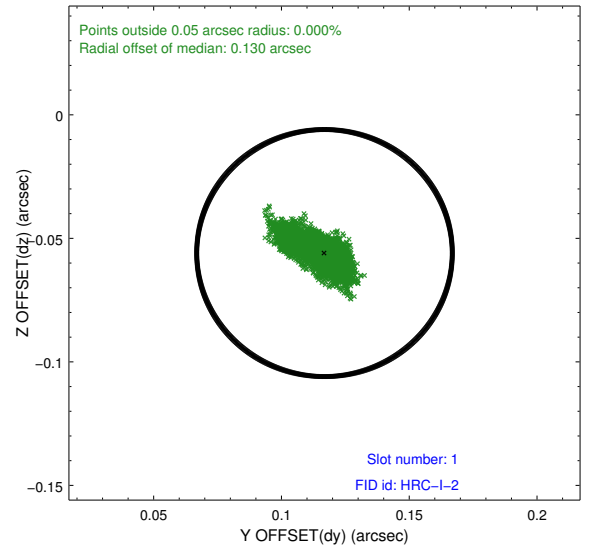
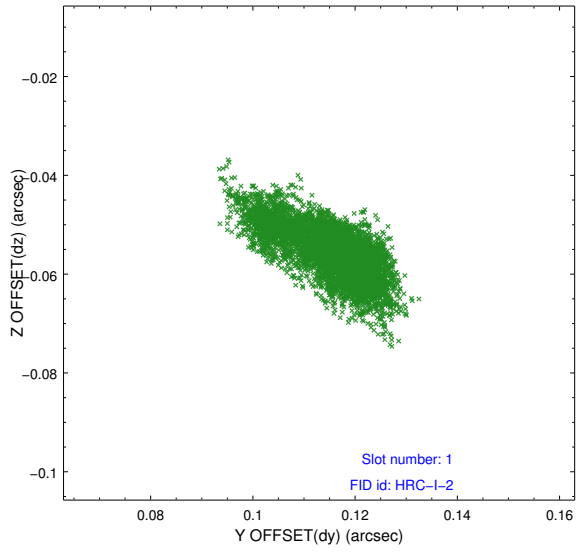


2.5 FID Slots

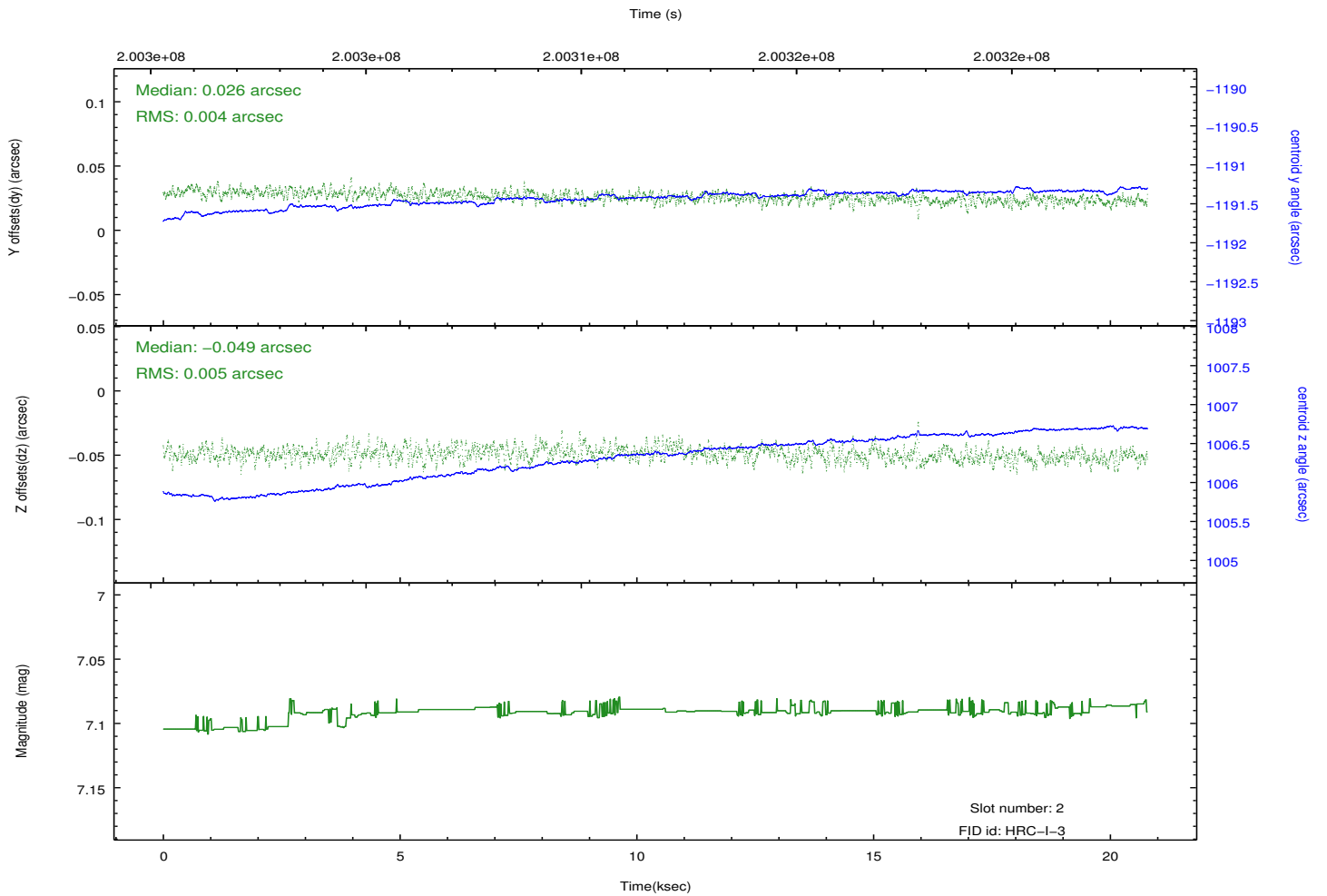
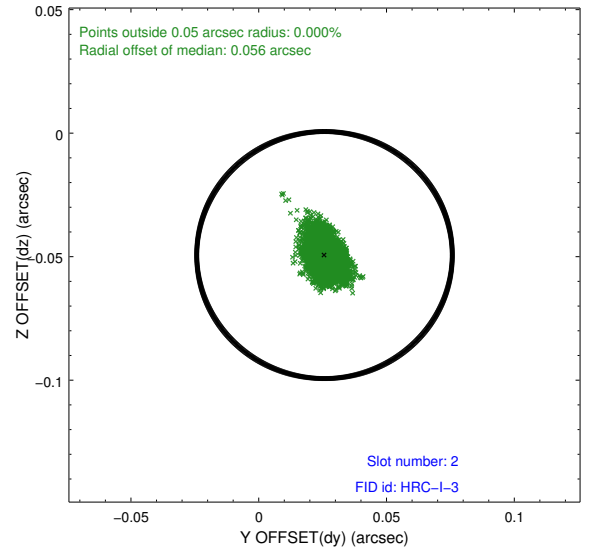
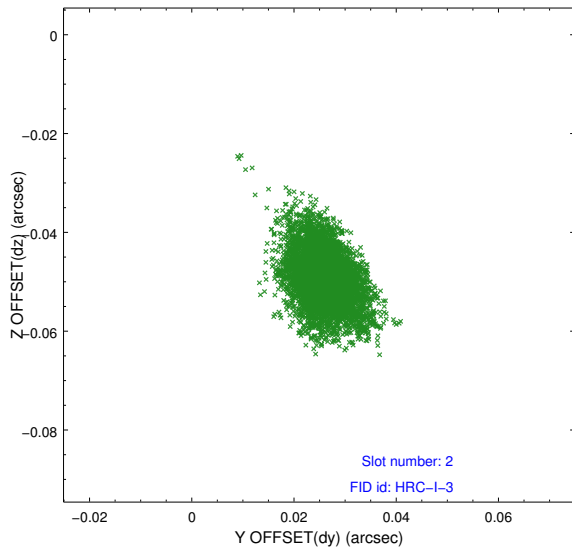
2.5.1 Slot 0



2.5.2 Slot 1



2.5.3 Slot 2



A Summary

A.1 Status

V&V Scientist	Beth Sundheim
V&V Date (YYYY-MM-DD)	2012.12.06
V&V Edition	1
V&V Disposition and Status	OK
V&V Charge Time	20.543

A.2 Comments