

# V&V Reference Report

## L2 ASCDS Version : 8.5

Observation 4871 - L2 Version 3  
Chandra X-Ray Center

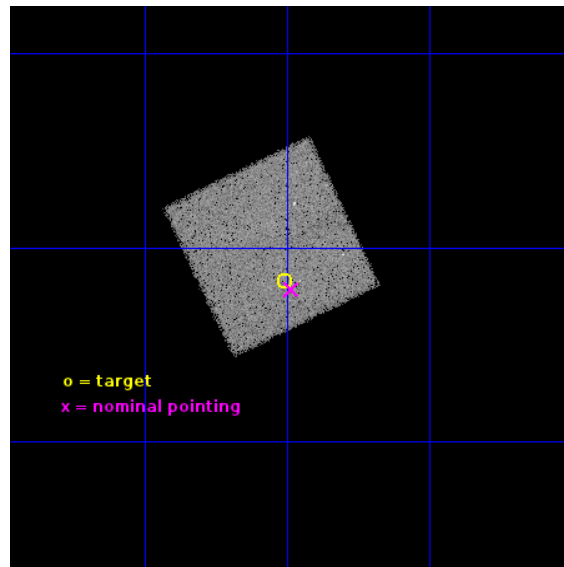
L2 Processing Date : Dec 6 2012

## Contents

<b>1</b>	<b>Front</b>	<b>2</b>
<b>2</b>	<b>OBI</b>	<b>3</b>
2.1	OBI . . . . .	3
2.1.1	Images . . . . .	3
2.1.2	Bias . . . . .	3
2.1.3	Parameters . . . . .	4
2.1.4	Events . . . . .	4
2.2	Compared Parameters . . . . .	5
2.3	Aspect . . . . .	6
2.4	Star Slots . . . . .	9
2.4.1	Slot 3 . . . . .	9
2.4.2	Slot 4 . . . . .	10
2.4.3	Slot 5 . . . . .	11
2.4.4	Slot 6 . . . . .	12
2.4.5	Slot 7 . . . . .	13
2.5	FID Slots . . . . .	14
2.5.1	Slot 0 . . . . .	14
2.5.2	Slot 1 . . . . .	15
2.5.3	Slot 2 . . . . .	16
<b>A</b>	<b>Summary</b>	<b>17</b>
A.1	Status . . . . .	17
A.2	Comments . . . . .	17

# 1 Front

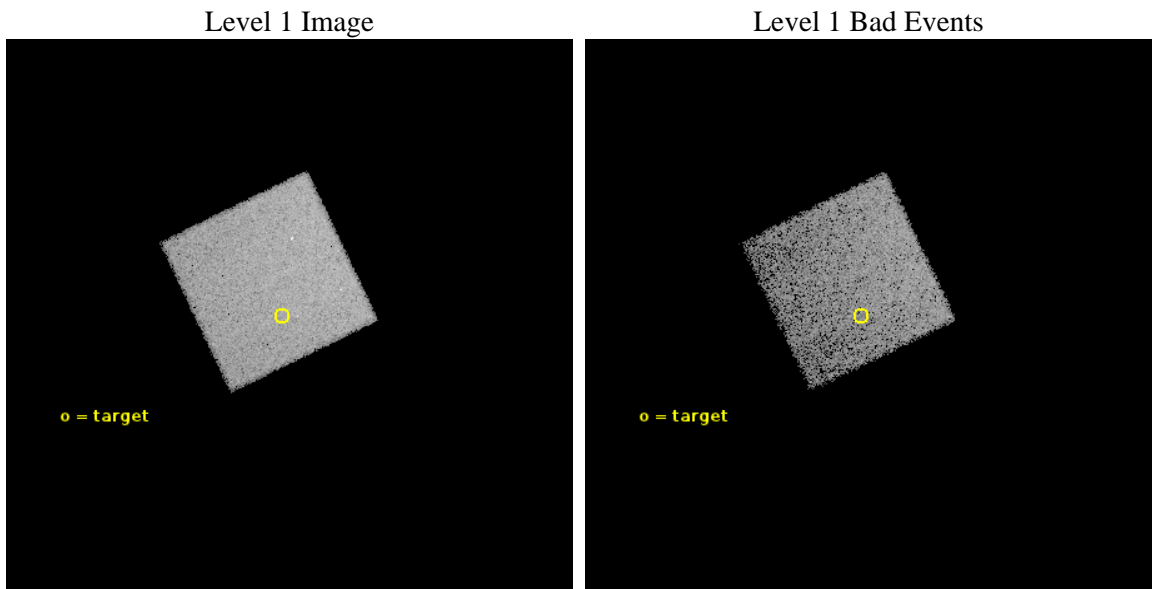
seq_num	700953	Sequence number
obs_id	4871	Observation id
title	UNCOVERING THE HIDDEN POPULATION OF BL LACS	Proposal title
observer	Dr Nicola Loaring	Principal investigator
object	2QZ J113900.5-020140	Source name
dtycycle	0	&#160
cycle	P	events from which exps? Prim/Second/Both
ra_targ	174.752083	Observer's specified target RA [deg]
dec_targ	-2.028028	Observer's specified target Dec [deg]
ra_nom	174.74644702523	Nominal RA [deg]
dec_nom	-2.0358691795274	Nominal Dec [deg]
roll_nom	244.20965653327	Nominal Roll [deg]
revision	3	Processing version of data
ontime	15147.0	Sum of GTIs [s]
livetime	14942.5854313	Livetime [s]
ontime7	15147.0	Sum of GTIs [s]
l2events	60846	Number of level 2 events



## 2 OBI

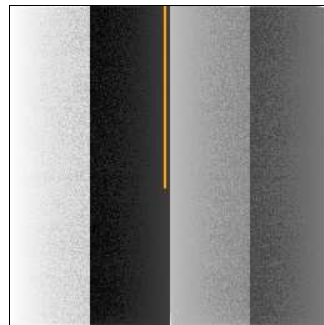
### 2.1 OBI

#### 2.1.1 Images



#### 2.1.2 Bias

Chip 7



### 2.1.3 Parameters

obi_num	0	Obi number	sched_exp_time	15000.000000	[s] Scheduled observation exposure time
ascdsver	8.5	Processing system revision	ontime	15147.0	Sum of GTIs [s]
caldbver	4.5.4	&#160	ontime7	15147.0	Sum of GTIs [s]
date	2012-12-06T10:53:35	Date and time of file creation	l1events	158429	Number of level 1 events
revision	3	Processing version of data			

### 2.1.4 Events

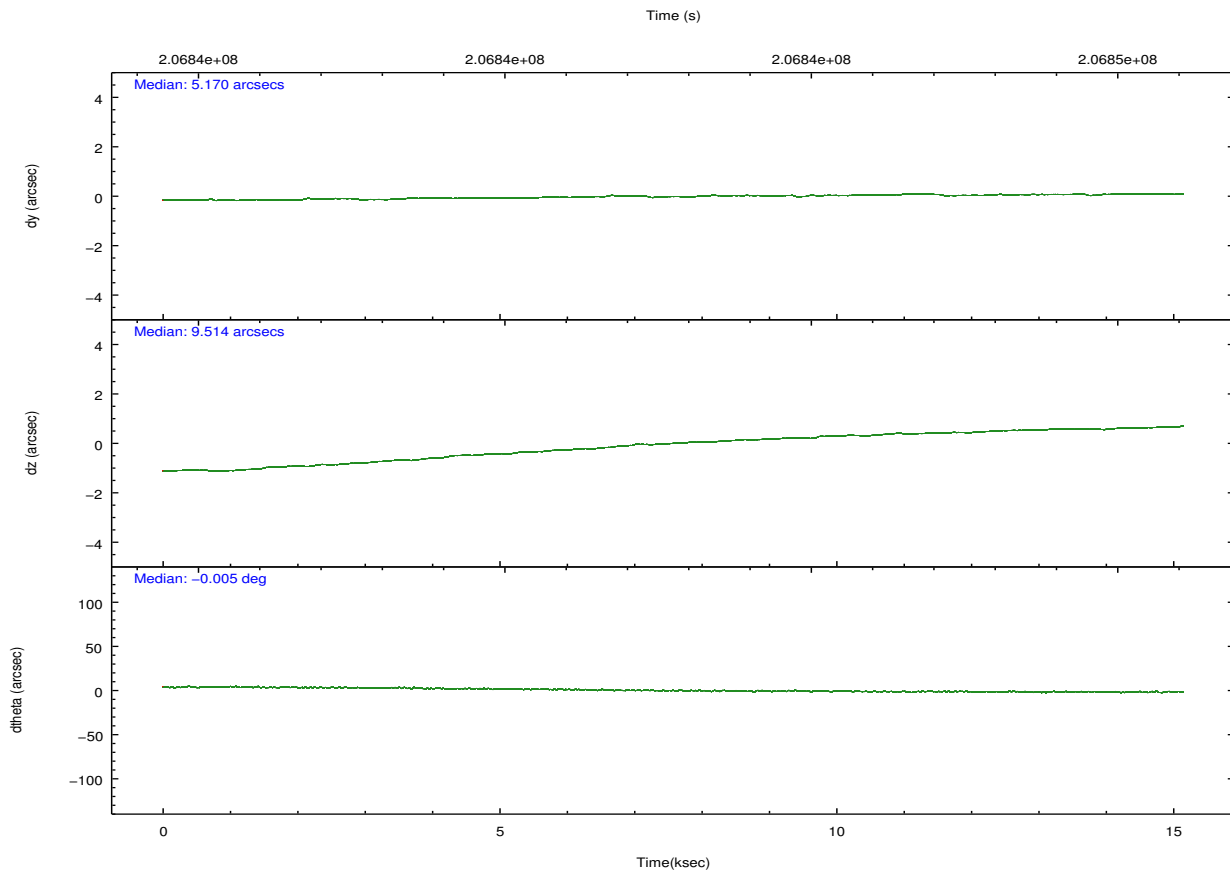
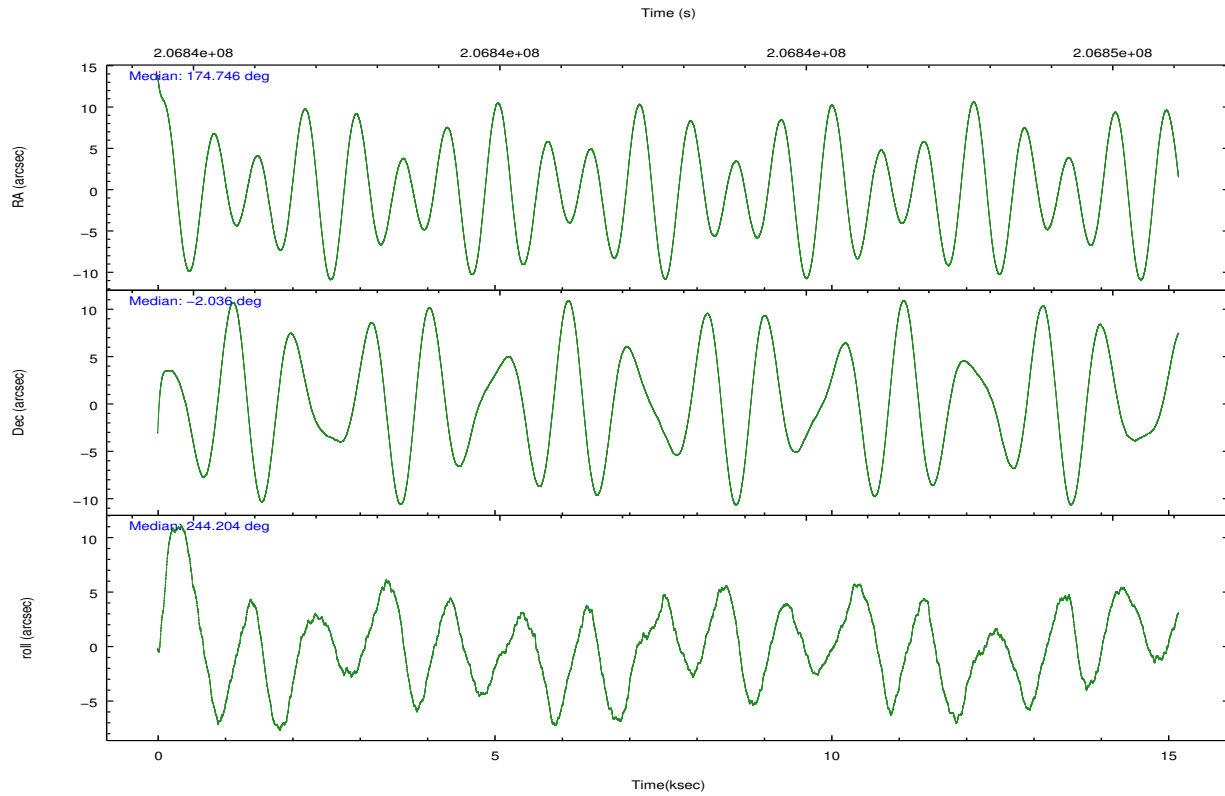
	<b>ccd 7</b>
level 1 events	158429
rejected events	96049
rejected %	<b>60%</b>

	<b>ccd 7</b>
grade 0 events	6168
	3%
grade 1 events	133
	0%
grade 2 events	13174
	8%
grade 3 events	5996
	3%
grade 4 events	5954
	3%
grade 5 events	15112
	9%
grade 6 events	35269
	22%
grade 7 events	76623
	48%

## 2.2 Compared Parameters

Parameter	Planned	Actual	Parameter	Planned	Actual
Instrument	ACIS	ACIS	Obspar format version number	7	7
Detector	ACIS-7	ACIS-7	Obspar file type	PREDICTED	ACTUAL
Grating	NONE	NONE	Obspar update status	NONE	UPDATED
Data mode	VFAINT	VFAINT	Number of optional ACIS chips dropped	0	0
Observation mode	POINTING	POINTING	On-chip summing requested	N	N
[deg] Pointing RA	174.744043	174.7464470252279	Subarray requested	NONE	NONE
[deg] Pointing Dec	-2.008729	-2.03586917952741	Alternating exposures requested	N	N
[deg] Pointing Roll	244.052946	244.2096565332683	[s] Primary exposure time	0.000000	3
[mm] SIM focus pos	-0.684267	-0.6828225247311905			
[mm] SIM defocus	0	0.001444936568705701			
[mm] SIM translation stage pos	-190.132523	-190.1400660498719			
[mm] SIM translation stage offset	0	0.00754346686406393			
[s] Observation start time (MET)	206835313.184000	206834082.44412			
Observation start date	2004-07-21T22:14:09	2004-07-21T21:54:42			
[s] Observation end time (MET)	206850313.184000	206851269.64489			
Observation end date	2004-07-22T02:24:09	2004-07-22T02:41:09			
Read mode	TIMED	TIMED			

## 2.3 Aspect

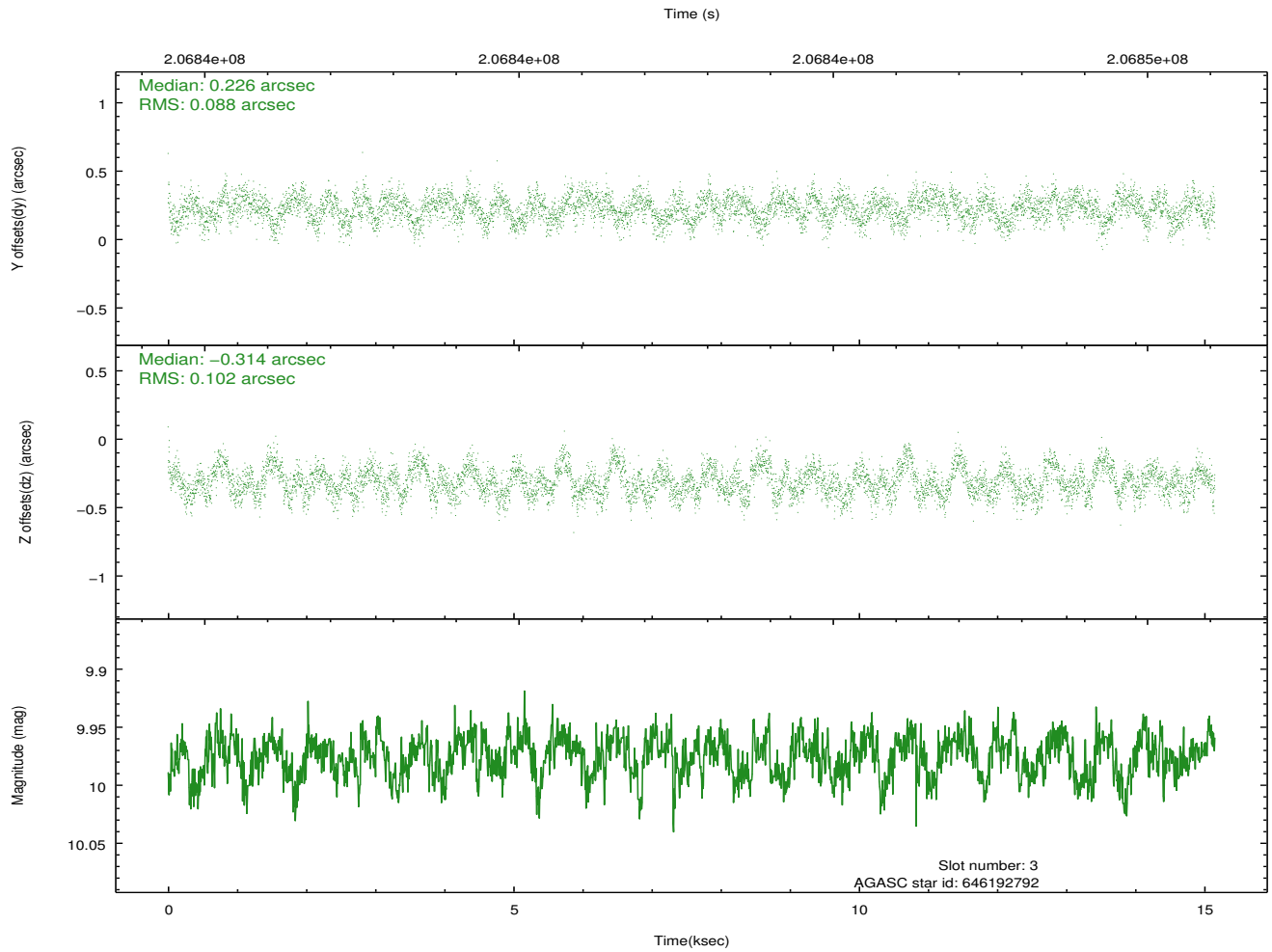
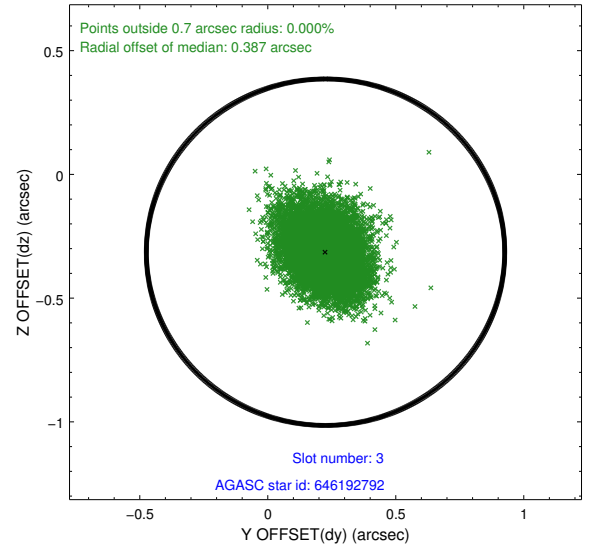
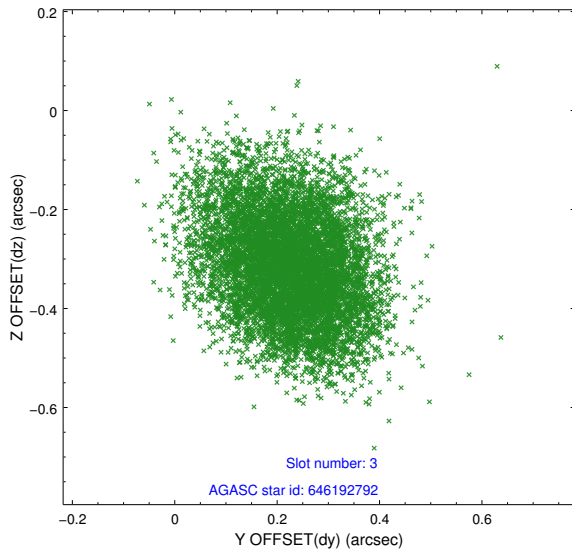


### Slot Statistics

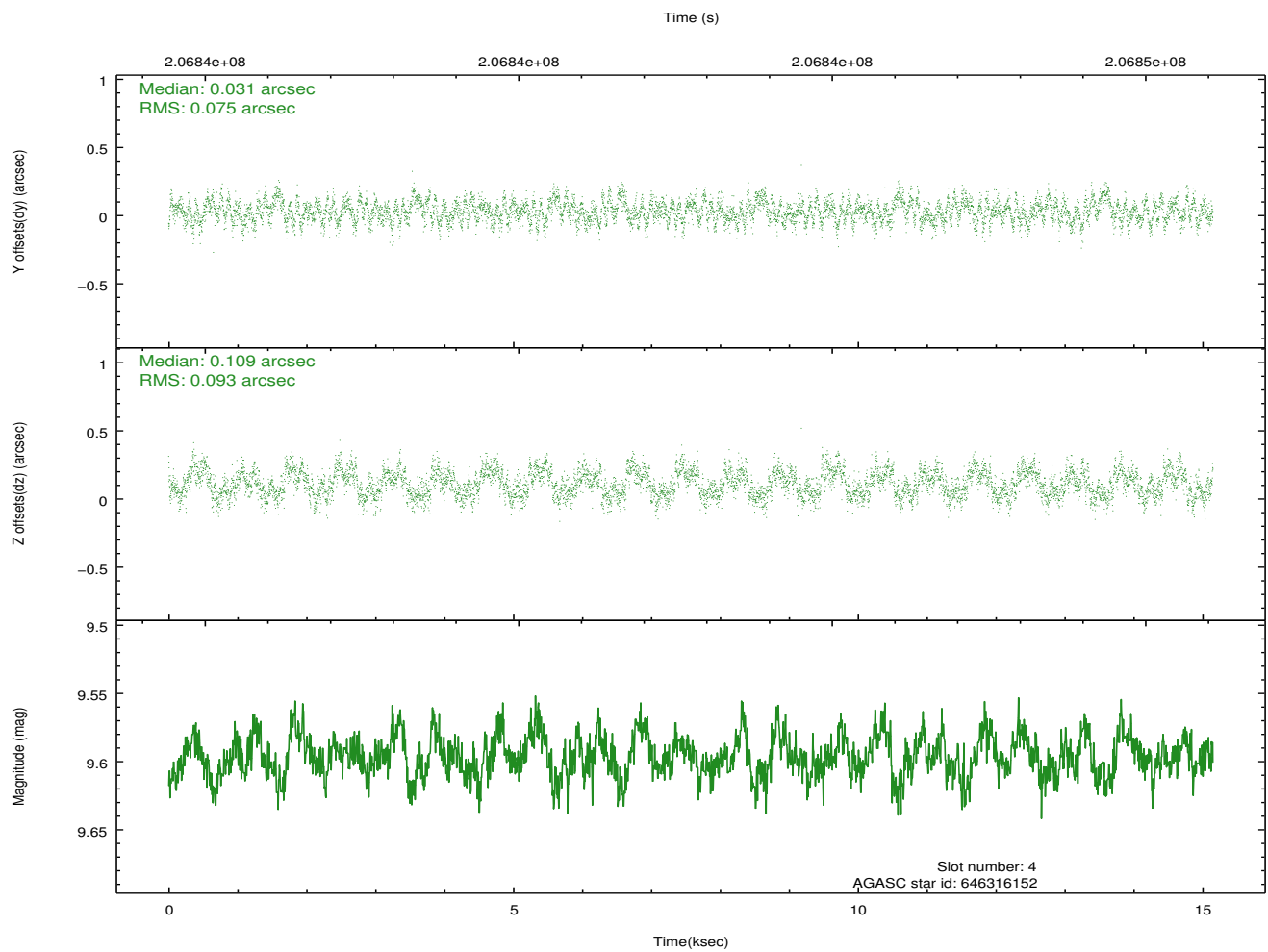
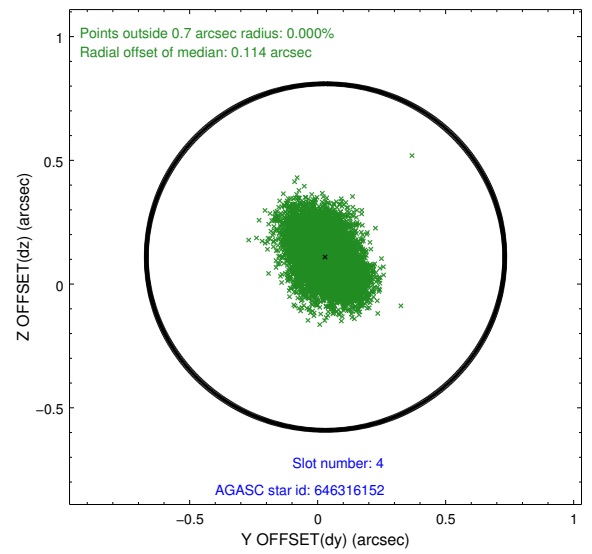
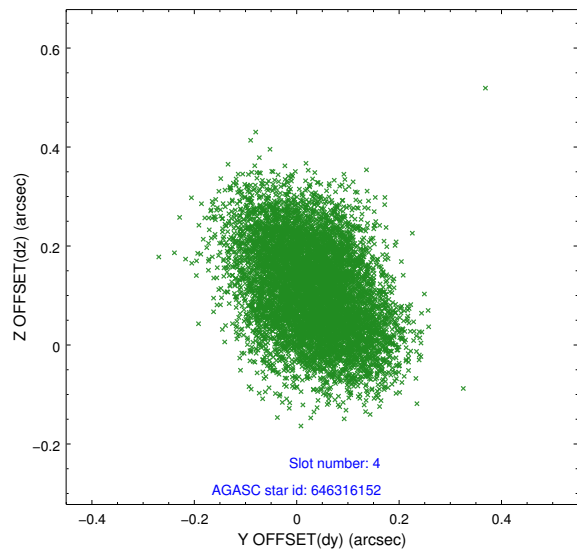
slot	status	id	mag	n_pts	med_dy	med_dz	dr1	dr2	ra	dec	mean_y	mean_z
0	FID	ACIS-S-2	7.10	3696	-0.068	-0.052	0.016	0.026	0.000000	0.000000	-757.90	-1730.68
1	FID	ACIS-S-4	7.20	3696	0.131	0.046	0.008	0.017	0.000000	0.000000	2155.42	177.61
2	FID	ACIS-S-5	7.23	3696	-0.096	0.014	0.015	0.023	0.000000	0.000000	-1810.41	171.56
3	GUIDE	646192792	9.97	7380	0.226	-0.314	0.144	0.231	174.005236	-2.295544	2092.63	-1938.09
4	GUIDE	646316152	9.60	7384	0.031	0.109	0.129	0.204	175.128060	-2.459624	855.90	1952.31
5	GUIDE	646322952	9.79	7384	-0.198	0.151	0.122	0.199	175.354154	-1.823942	-1558.04	1683.11
6	GUIDE	646324808	8.39	7390	-0.147	0.012	0.064	0.105	175.125728	-1.837660	-1154.62	965.37
7	GUIDE	646580040	8.80	7390	0.090	0.044	0.073	0.117	174.871949	-2.716414	2089.81	1528.58

## 2.4 Star Slots

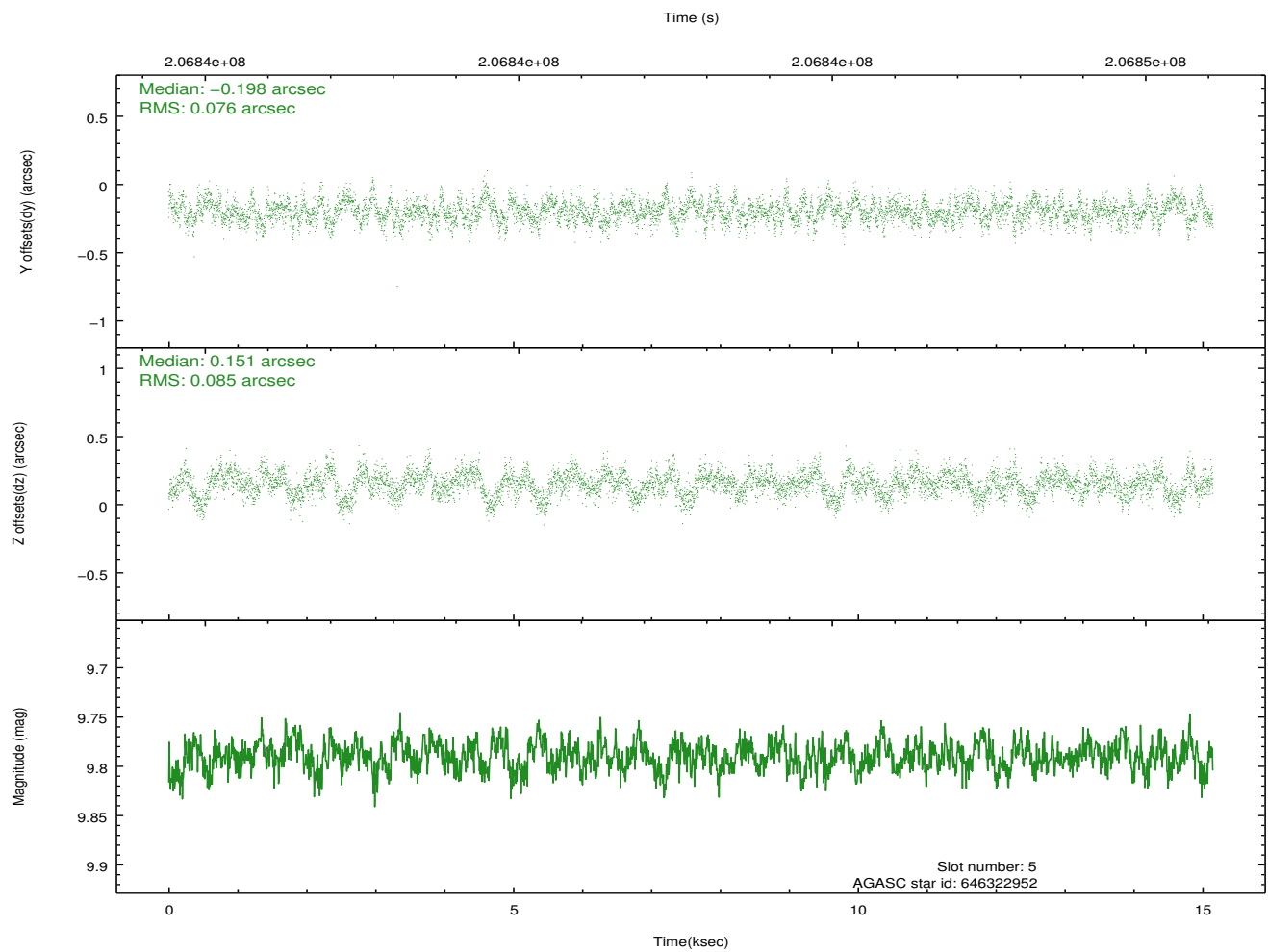
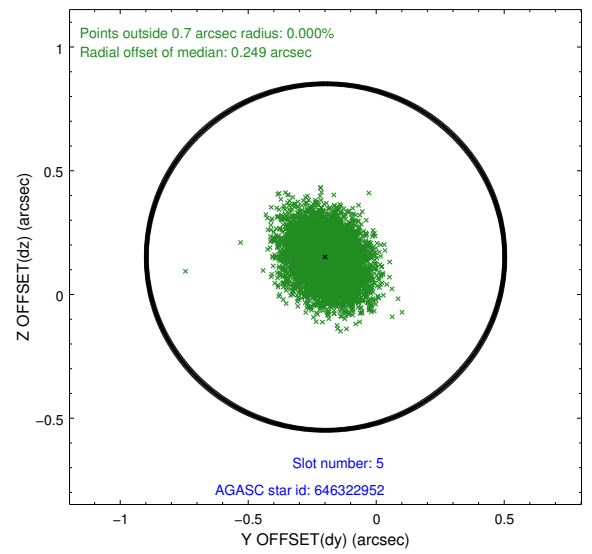
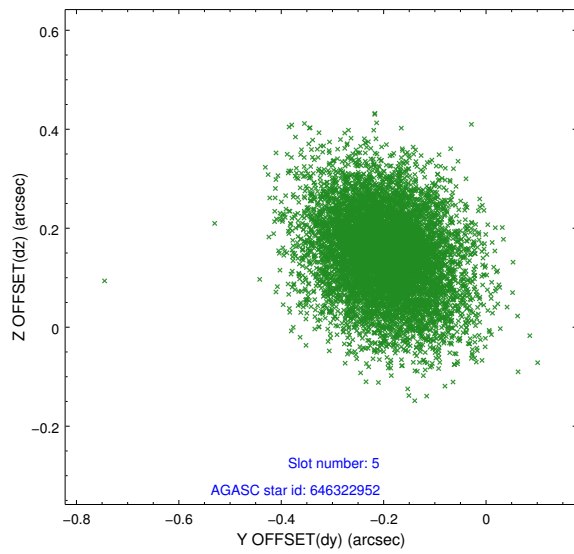
### 2.4.1 Slot 3



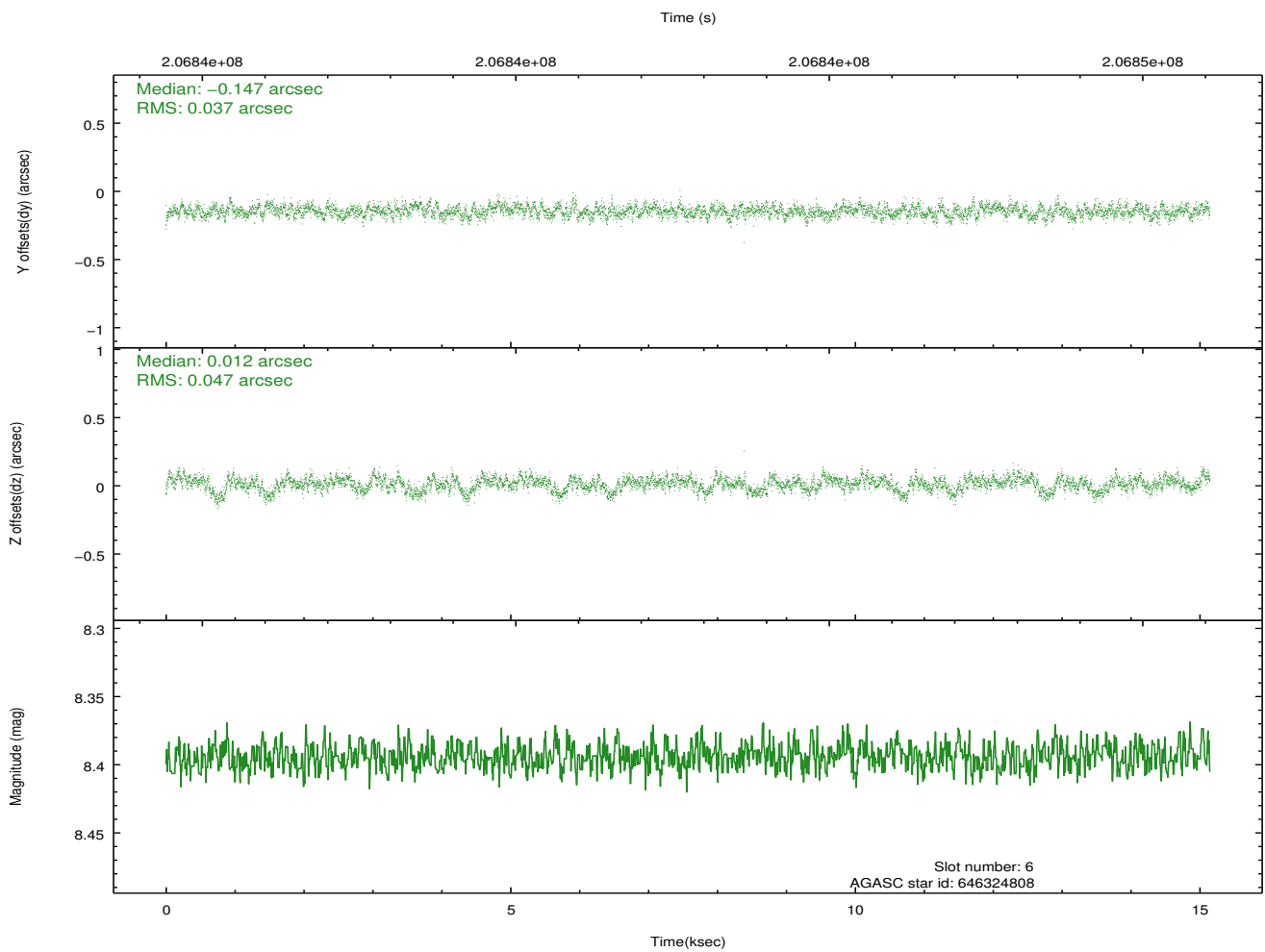
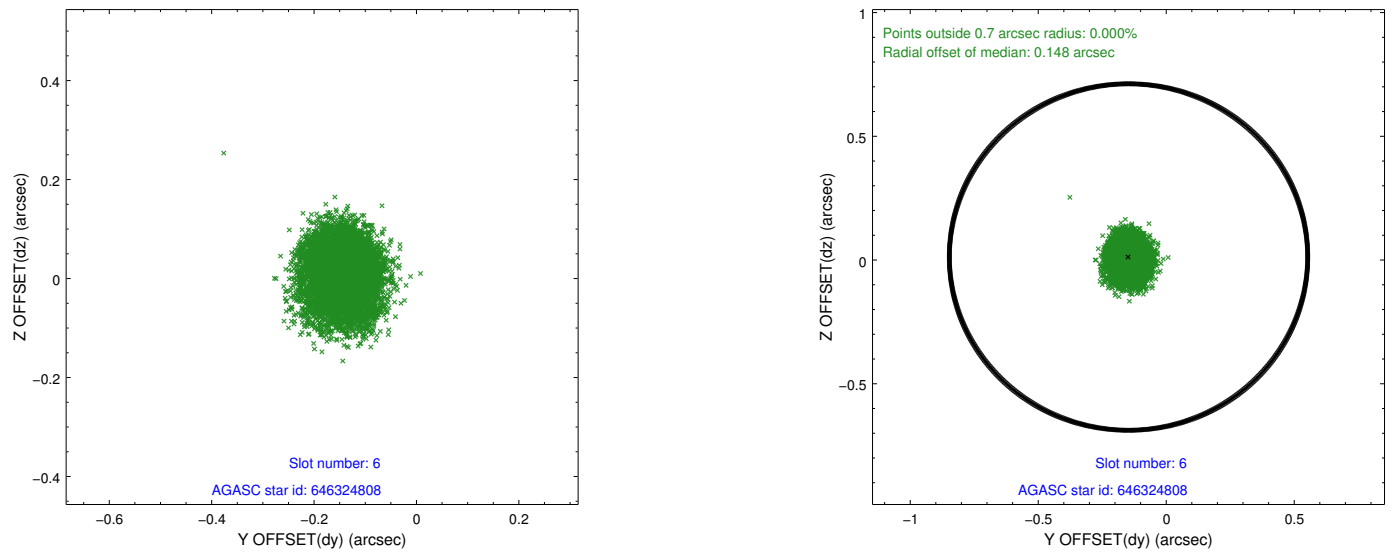
## 2.4.2 Slot 4



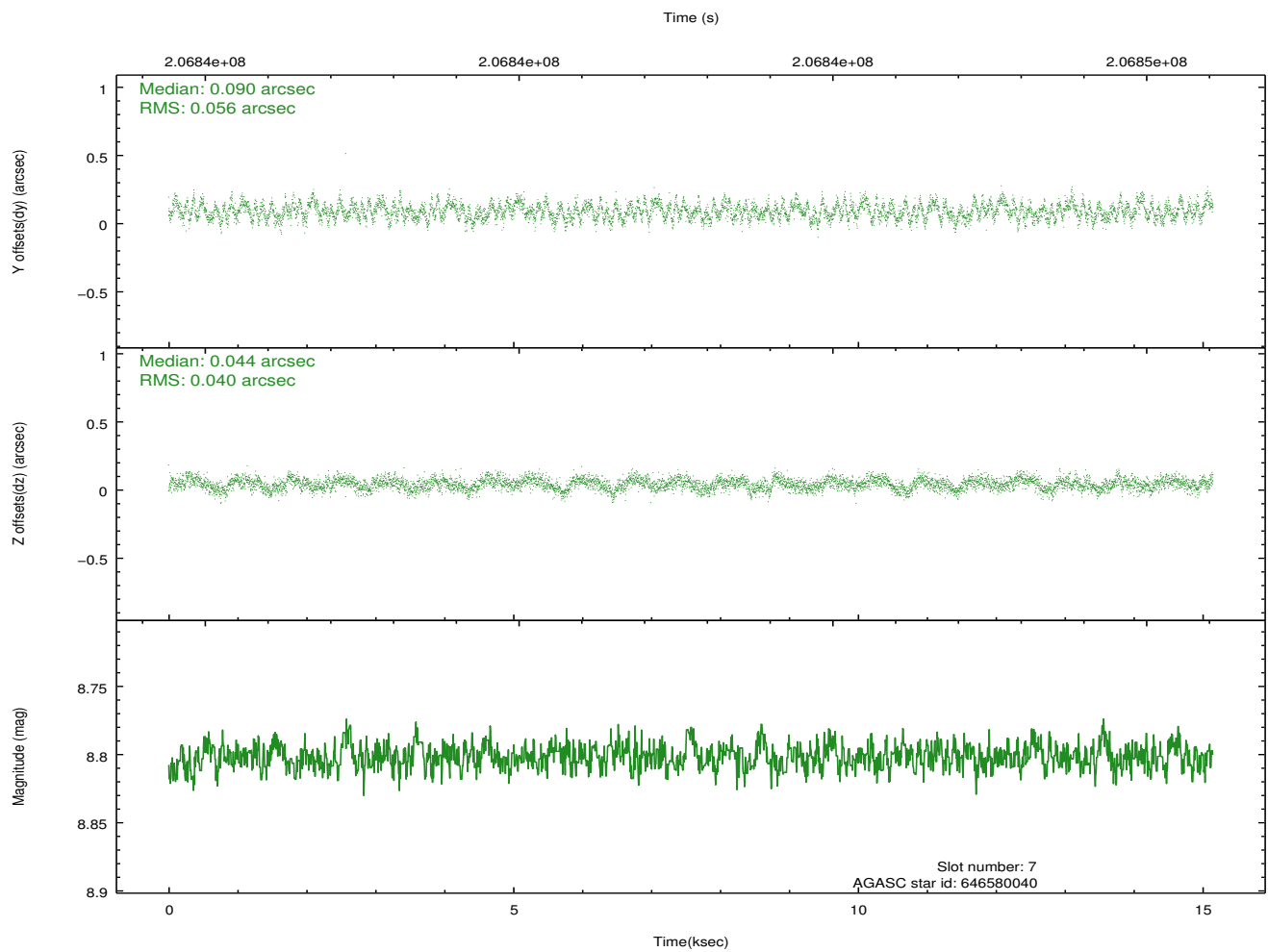
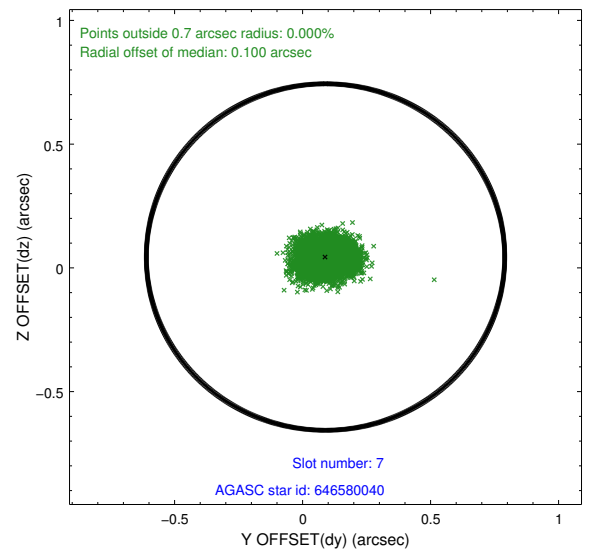
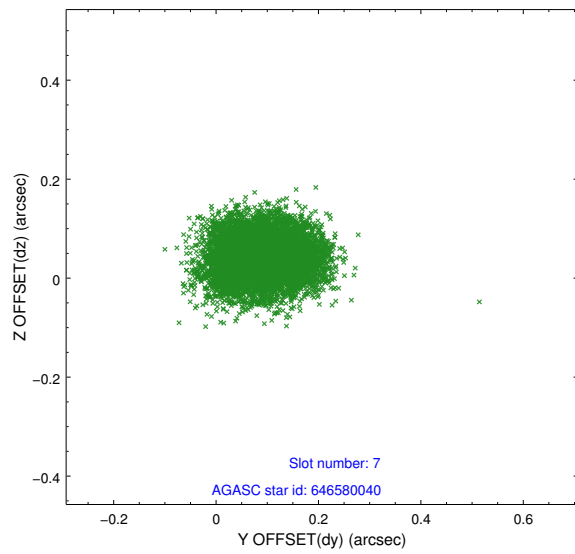
### 2.4.3 Slot 5



## 2.4.4 Slot 6

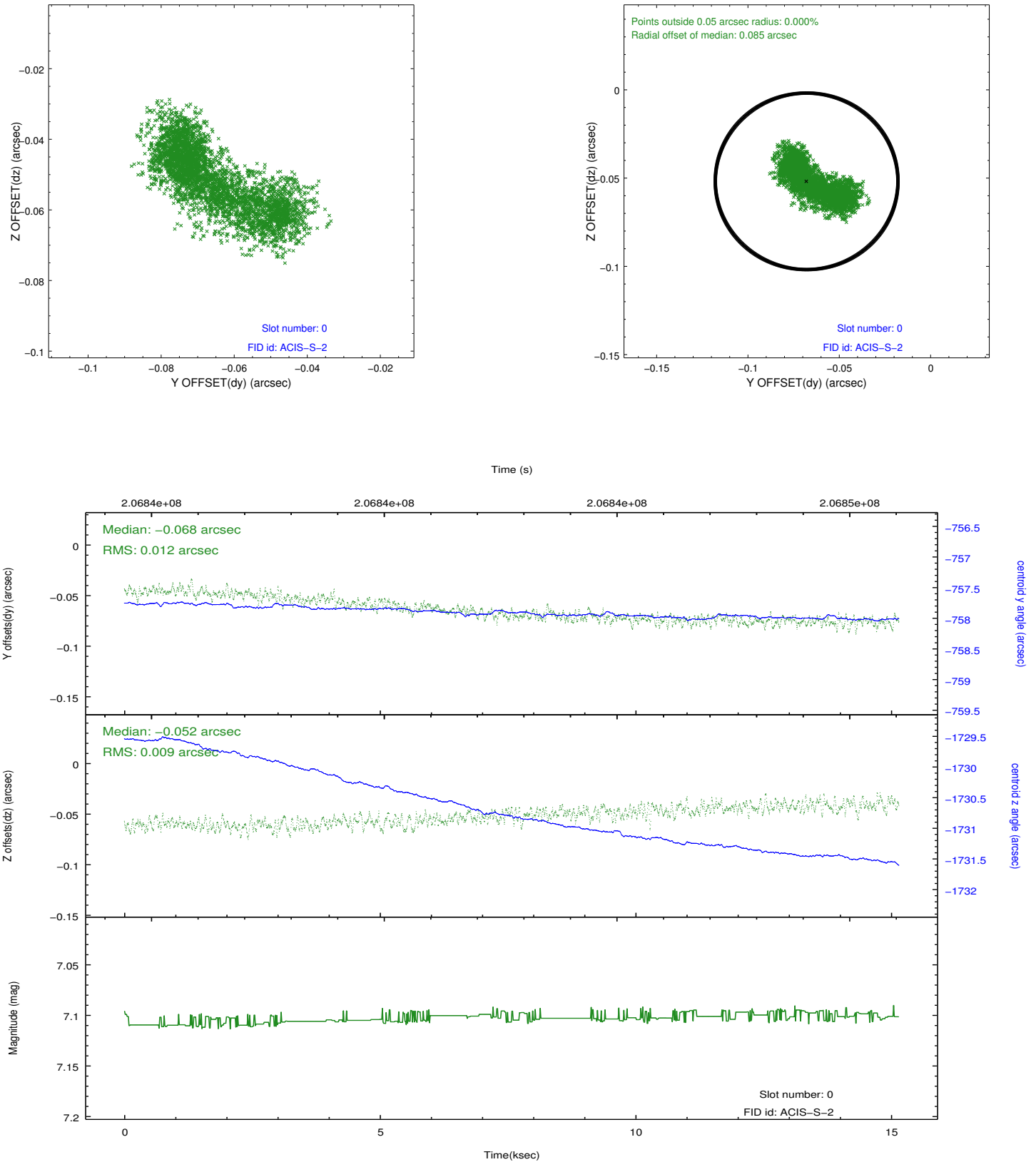


## 2.4.5 Slot 7

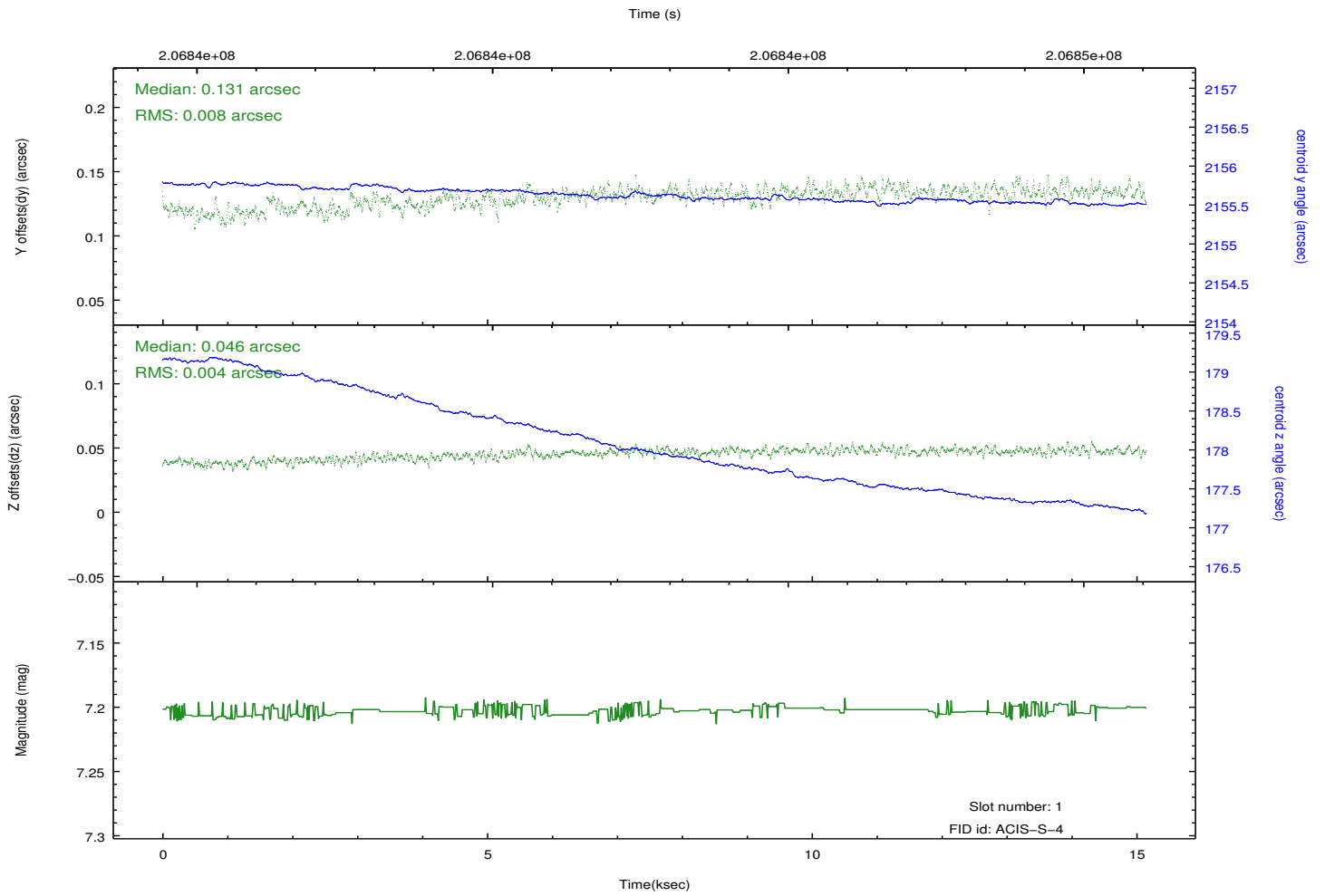
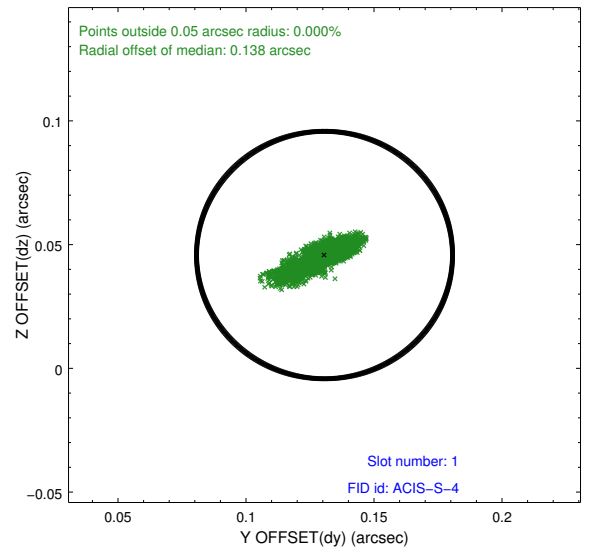
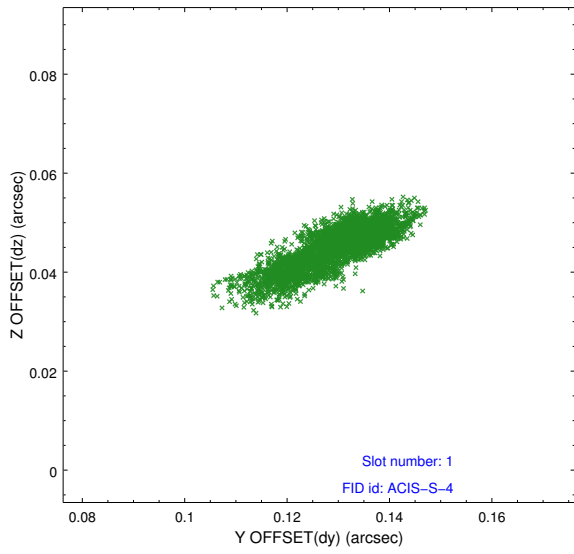


## 2.5 FID Slots

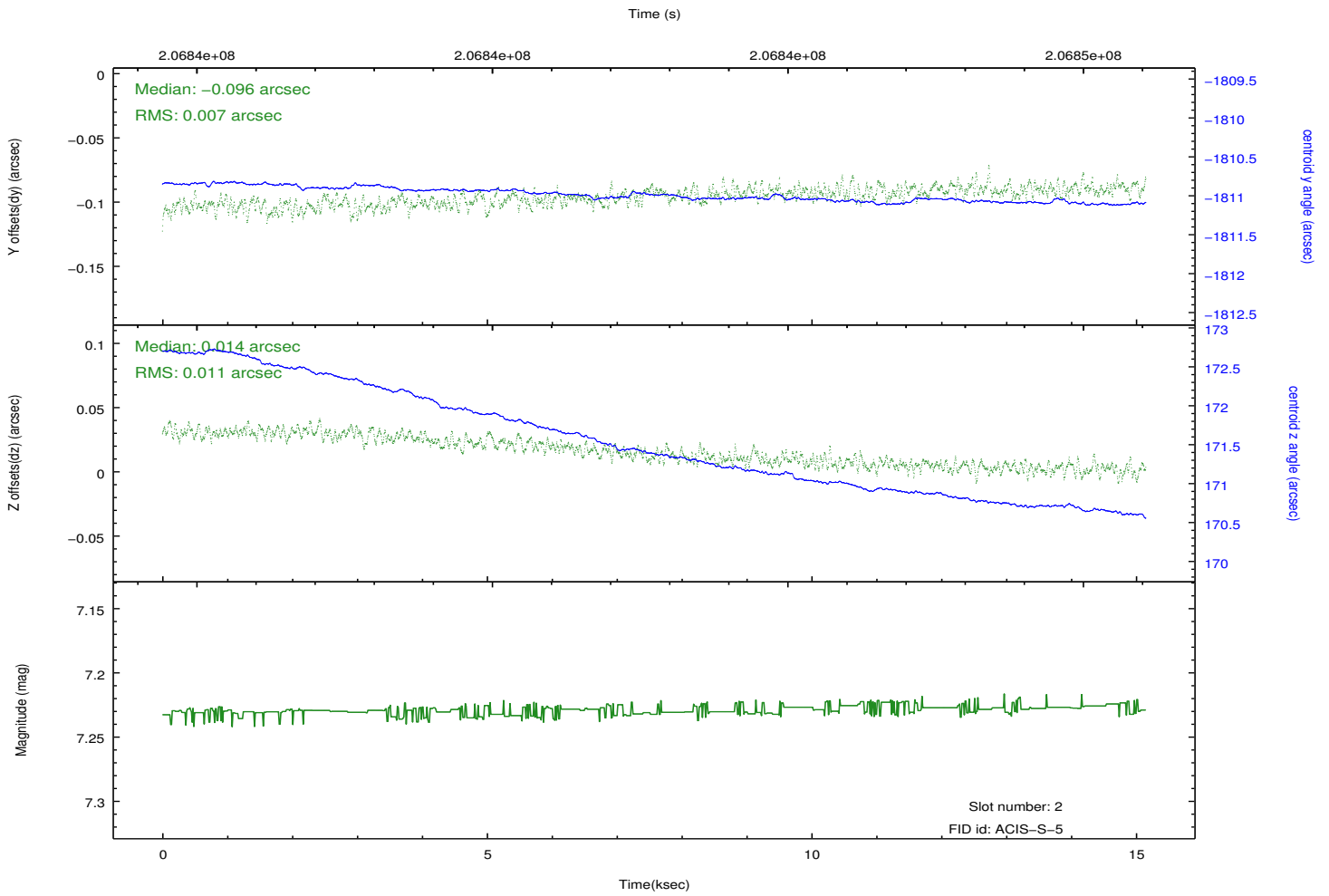
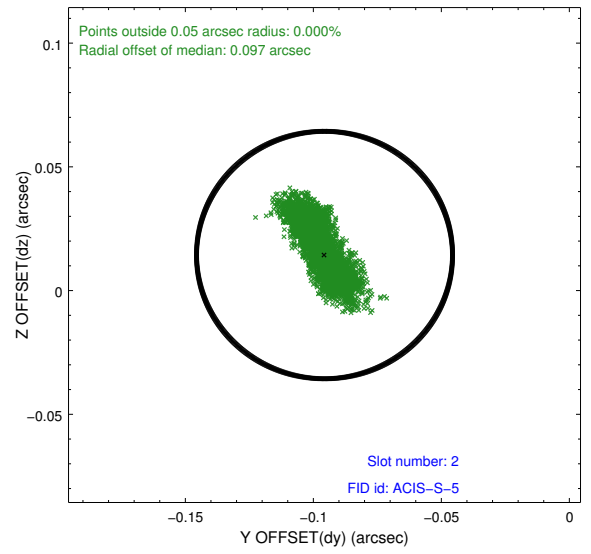
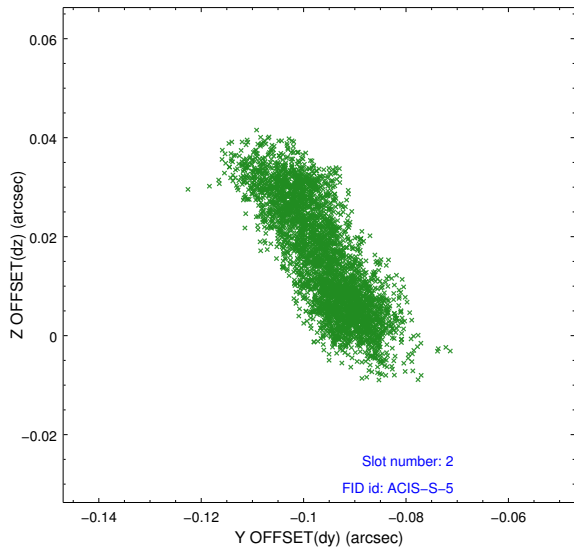
### 2.5.1 Slot 0



## 2.5.2 Slot 1



### 2.5.3 Slot 2



# A Summary

## A.1 Status

V&V Scientist	Jen Lauer
V&V Date (YYYY-MM-DD)	2012.12.20
V&V Edition	1
V&V Disposition and Status	OK
V&V Charge Time	15.147

## A.2 Comments