

V&V Reference Report

L2 ASCDS Version : 8.5.1.1

Observation 4911 - L2 Version 3
Chandra X-Ray Center

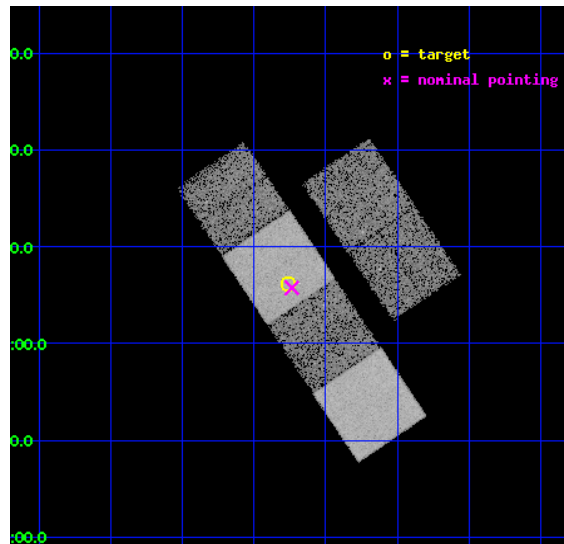
L2 Processing Date : Dec 22 2012

Contents

1	Front	2
2	OBI	3
2.1	OBI	3
2.1.1	Images	3
2.1.2	Bias	3
2.1.3	Parameters	4
2.1.4	Events	4
2.2	Compared Parameters	5
2.3	Aspect	6
2.4	Star Slots	9
2.4.1	Slot 3	9
2.4.2	Slot 4	10
2.4.3	Slot 5	11
2.4.4	Slot 6	12
2.4.5	Slot 7	13
2.5	FID Slots	14
2.5.1	Slot 0	14
2.5.2	Slot 1	15
2.5.3	Slot 2	16
A	Summary	17
A.1	Status	17
A.2	Comments	17

1 Front

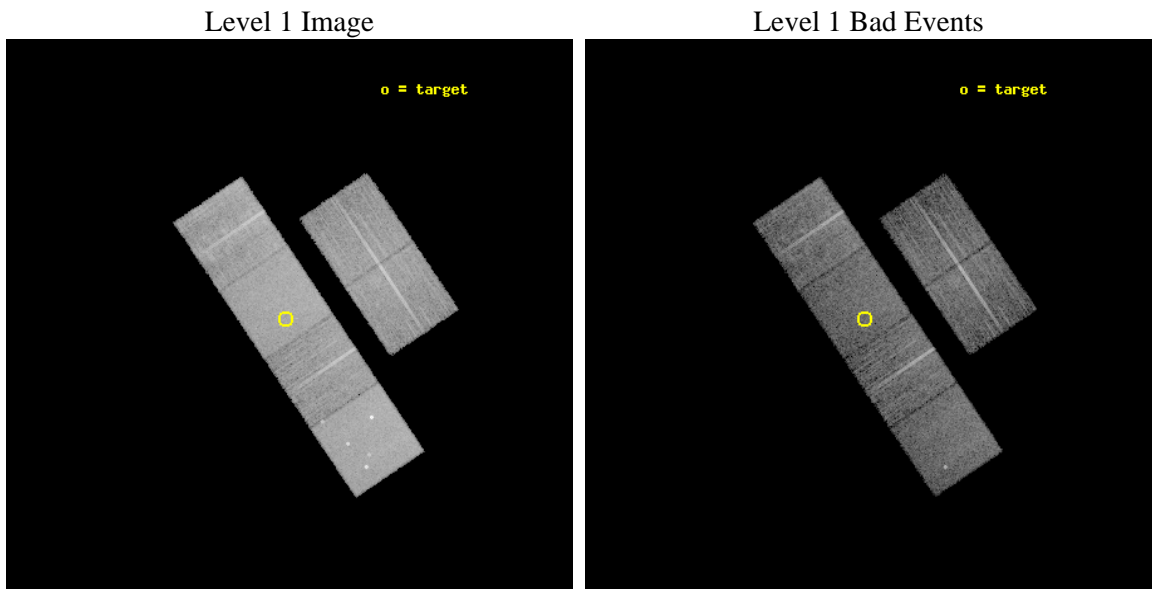
seq_num	700992	Sequence number
obs_id	4911	Observation id
title	Chandra Observations of Optically Selected Type 2 Quasar Candidates	
observer	Prof. Michael Strauss	Principal investigator
object	SDSSJ123215.81+020610.0	Source name
dtcycle	0	
cycle	P	events from which exps? Prim/Second/Both
ra_targ	188.065833	Observer's specified target RA [deg]
dec_targ	2.102778	Observer's specified target Dec [deg]
ra_nom	188.05910378938	Nominal RA [deg]
dec_nom	2.0958501837123	Nominal Dec [deg]
roll_nom	236.07109144085	Nominal Roll [deg]
revision	3	Processing version of data
ontime	9734.3999637365	Sum of GTIs [s]
livetime	9611.1371300437	Livetime [s]
ontime2	9731.1590530574	Sum of GTIs [s]
ontime3	9734.3999637365	Sum of GTIs [s]
ontime5	9734.3999637365	Sum of GTIs [s]
ontime6	9734.3999637365	Sum of GTIs [s]
ontime7	9734.3999637365	Sum of GTIs [s]
ontime8	9734.3999637365	Sum of GTIs [s]
l2events	122642	Number of level 2 events



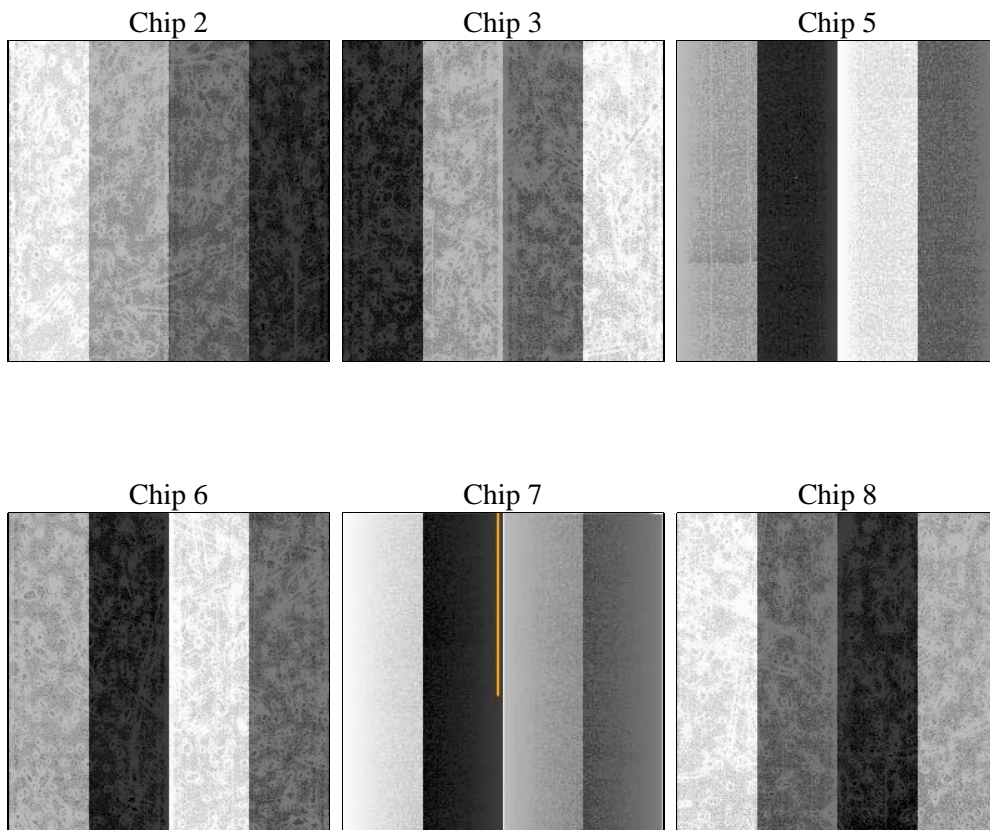
2 OBI

2.1 OBI

2.1.1 Images



2.1.2 Bias



2.1.3 Parameters

obi_num	4	Obi number	sched_exp_time	9554.927000	[s] Scheduled observation exposure time
ascdsver	8.5.1.1	Processing system revision	ontime	9734.3999637365	Sum of GTIs [s]
caldbver	4.5.5	 	ontime2	9731.1590530574	Sum of GTIs [s]
date	2012-12-22T14:36:37	Date and time of file creation	ontime3	9734.3999637365	Sum of GTIs [s]
revision	3	Processing version of data	ontime5	9734.3999637365	Sum of GTIs [s]
			ontime6	9734.3999637365	Sum of GTIs [s]
			ontime7	9734.3999637365	Sum of GTIs [s]
			ontime8	9734.3999637365	Sum of GTIs [s]
			l1events	596283	Number of level 1 events

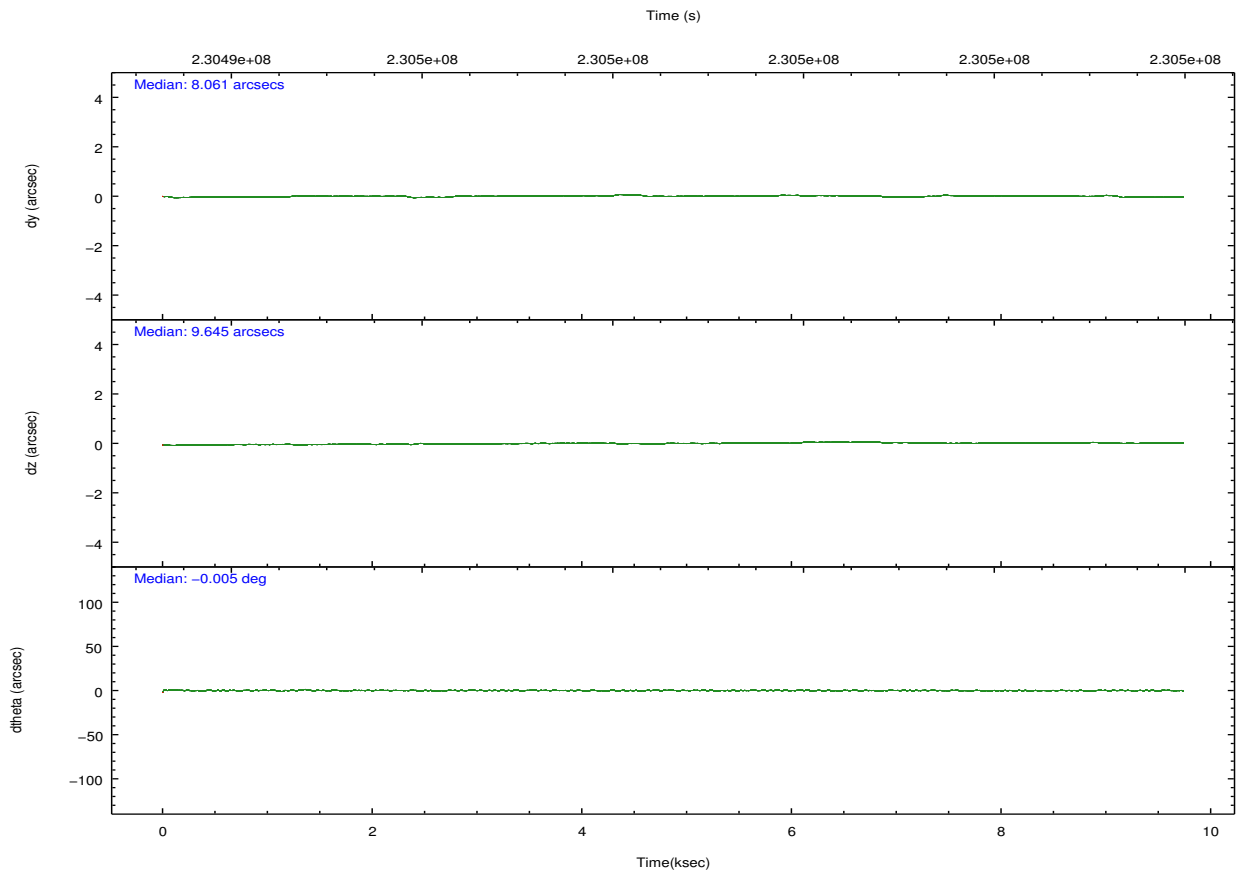
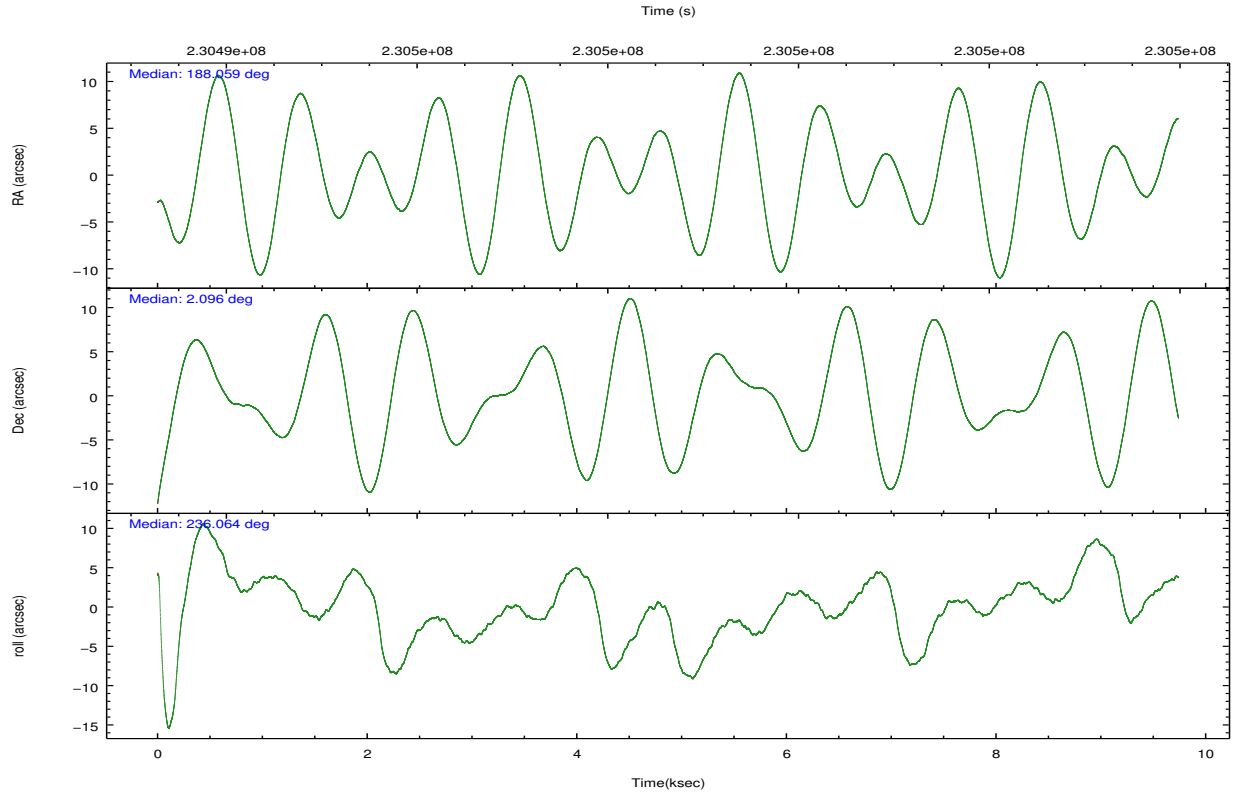
2.1.4 Events

	ccd 2	ccd 3	ccd 5	ccd 6	ccd 7	ccd 8		ccd 2	ccd 3	ccd 5	ccd 6	ccd 7	ccd 8
level 1 events	83004	78931	129720	84679	113965	105984	grade 0 events	4442	4473	8186	4065	4418	7186
rejected events	73881	70015	75475	75549	70949	85205		5%	5%	6%	4%	3%	6%
rejected %	89%	88%	58%	89%	62%	80%	grade 1 events	44	56	241	40	129	73
								0%	0%	0%	0%	0%	0%
							grade 2 events	2000	1824	17574	2134	9469	5149
								2%	2%	13%	2%	8%	4%
							grade 3 events	940	960	2386	964	4125	2375
								1%	1%	1%	1%	3%	2%
							grade 4 events	983	980	2123	1000	4137	2221
								1%	1%	1%	1%	3%	2%
							grade 5 events	3292	3708	9390	3880	10738	4935
								3%	4%	7%	4%	9%	4%
							grade 6 events	1735	1670	30192	1981	25552	6320
								2%	2%	23%	2%	22%	5%
							grade 7 events	69568	65260	59628	70615	55397	77725
								83%	82%	45%	83%	48%	73%

2.2 Compared Parameters

Parameter	Planned	Actual	Parameter	Planned	Actual
Instrument	ACIS	ACIS	Obspar format version number	7	7
Detector	ACIS-235678	ACIS-235678	Obspar file type	PREDICTED	ACTUAL
Grating	NONE	NONE	Obspar update status	NONE	UPDATED
Data mode	FAINT	FAINT	Number of optional ACIS chips dropped	0	0
Observation mode	POINTING	POINTING	On-chip summing requested	N	N
[deg] Pointing RA	188.060605	188.0591037893828	Subarray requested	NONE	NONE
[deg] Pointing Dec	2.123008	2.095850183712328	Alternating exposures requested	N	N
[deg] Pointing Roll	235.914380	236.0710914408547	[s] Primary exposure time	0.000000	3.2
[mm] SIM focus pos	-0.684267	-0.6828225247311905			
[mm] SIM defocus	0	0.001444936568705701			
[mm] SIM translation stage pos	-190.132523	-190.1425803651734			
[mm] SIM translation stage offset	0	0.01005778216563158			
[s] Observation start time (MET)	230493945.184000	230492342.72019			
Observation start date	2005-04-21T18:04:41	2005-04-21T17:39:02			
[s] Observation end time (MET)	230503500.184000	230503723.2957			
Observation end date	2005-04-21T20:43:56	2005-04-21T20:48:43			
Read mode	TIMED	TIMED			

2.3 Aspect

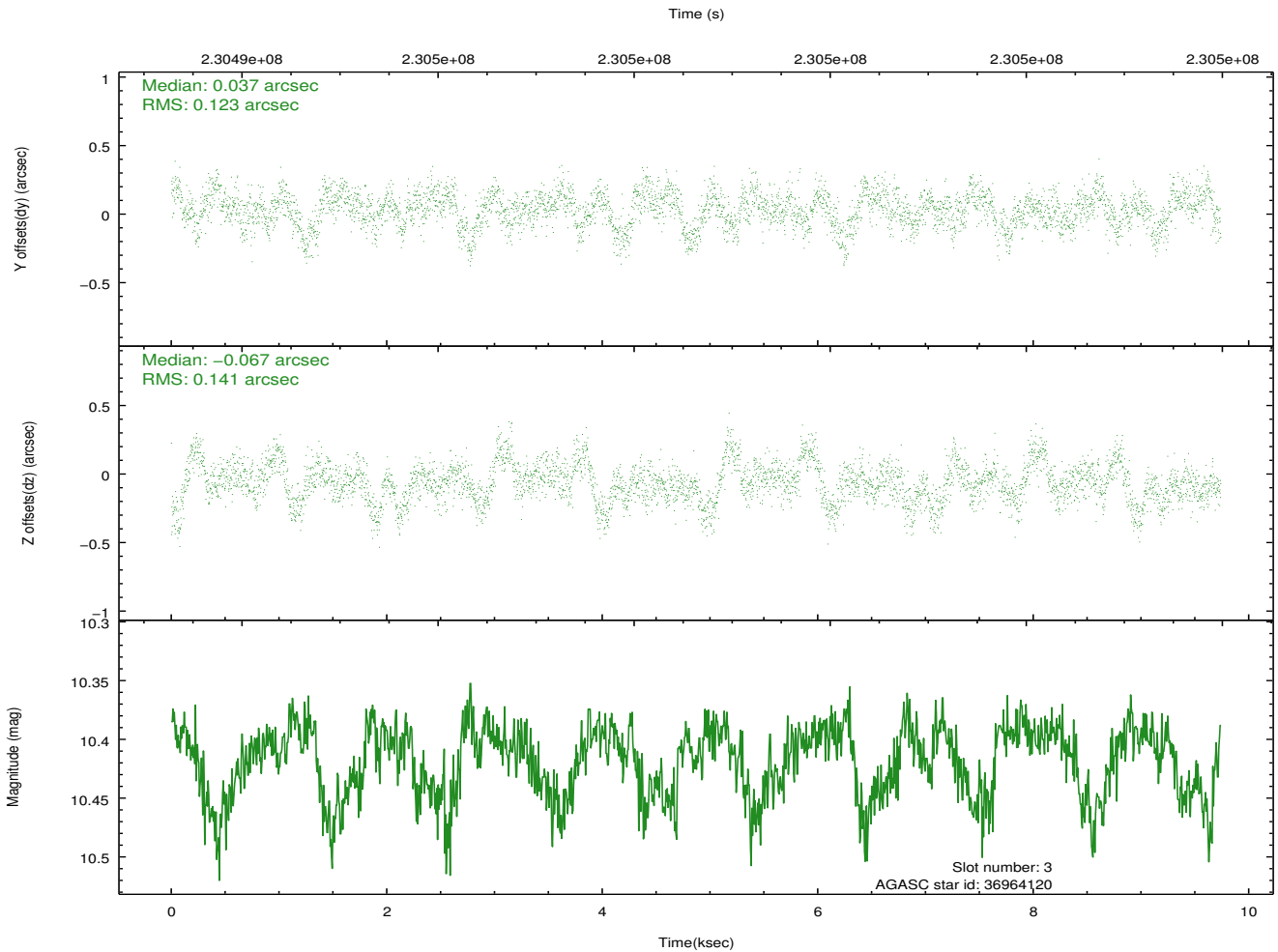
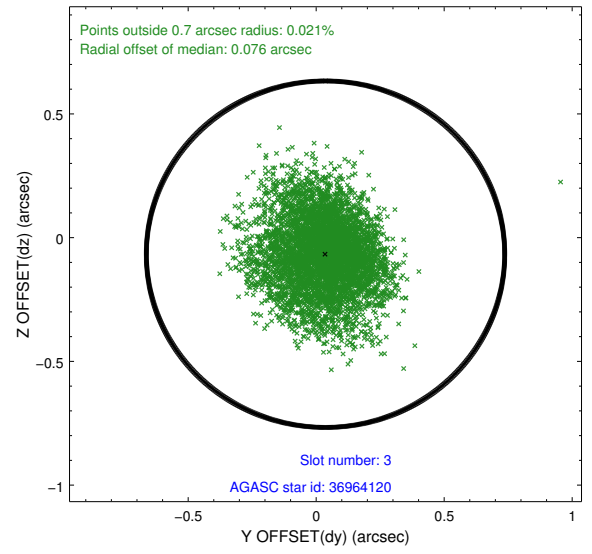
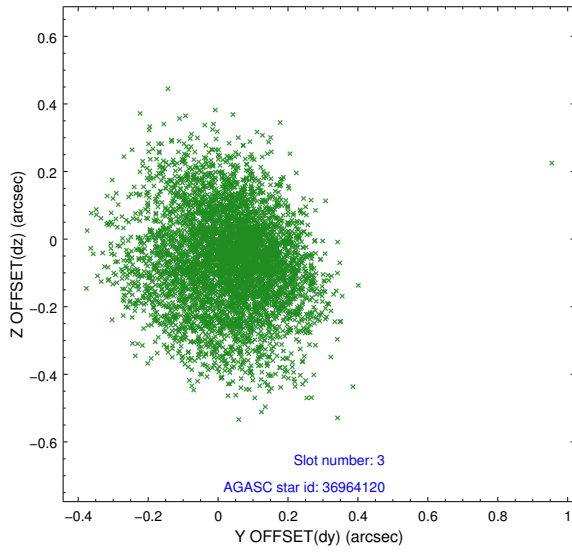


Slot Statistics

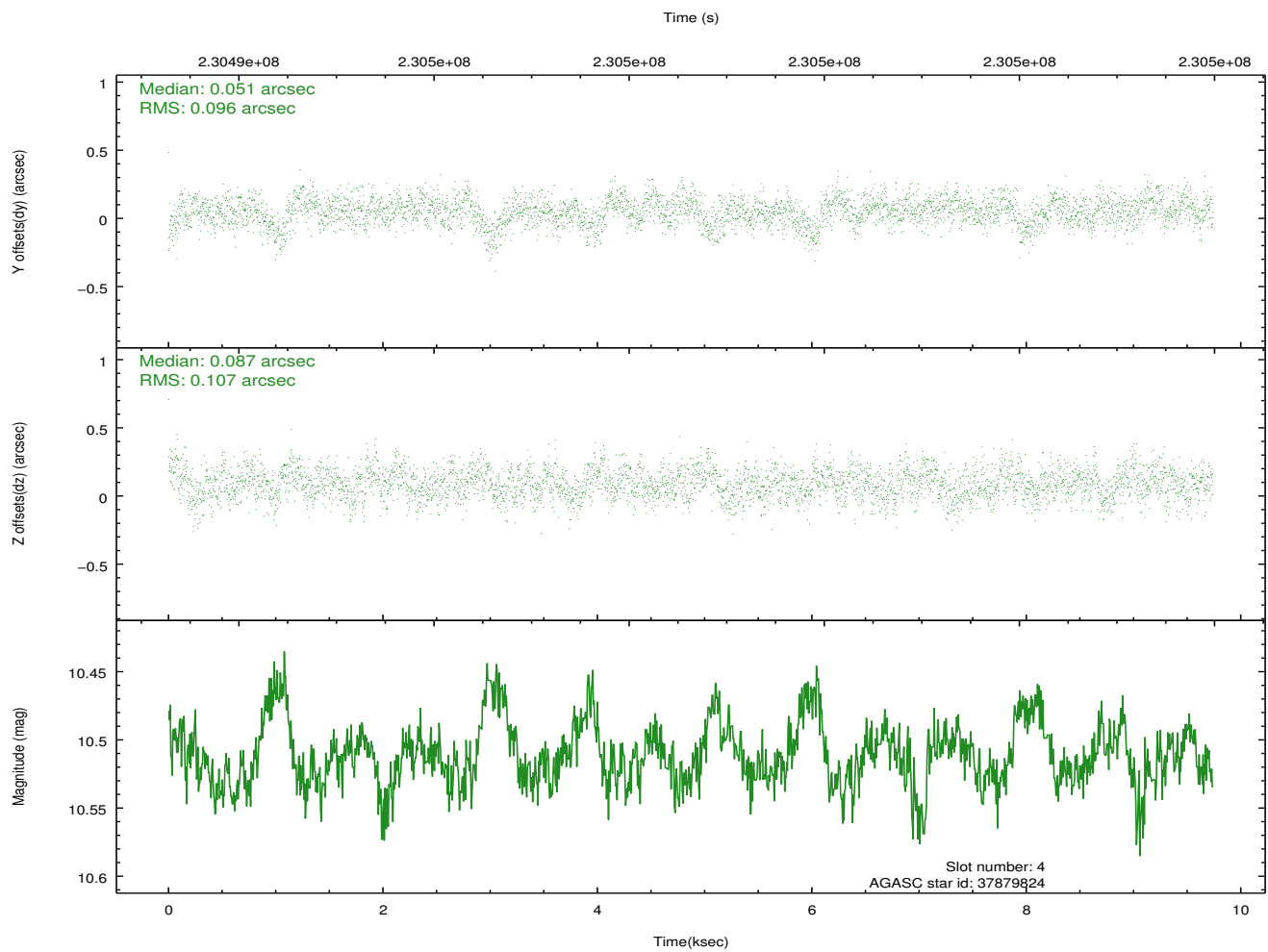
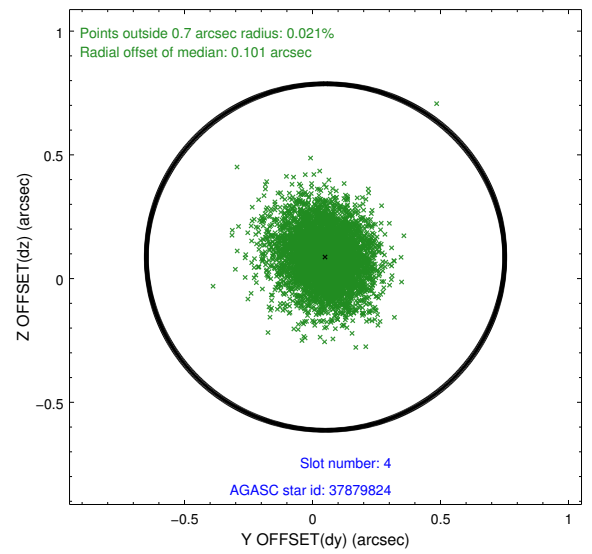
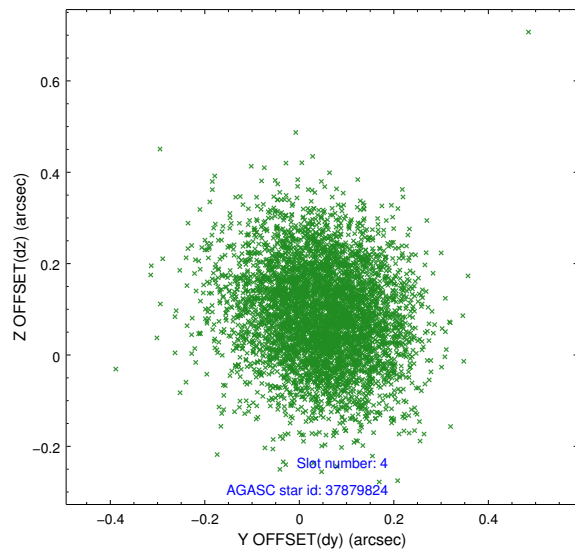
slot	status	id	mag	n_pts	med_dy	med_dz	dr1	dr2	ra	dec	mean_y	mean_z
0	FID	ACIS-S-2	7.10	2376	-0.036	-0.033	0.007	0.011	0.000000	0.000000	-760.84	-1730.87
1	FID	ACIS-S-4	7.20	2376	0.114	0.027	0.006	0.010	0.000000	0.000000	2152.30	177.16
2	FID	ACIS-S-5	7.23	2376	-0.109	0.016	0.007	0.011	0.000000	0.000000	-1813.08	171.37
3	GUIDE	36964120	10.42	4727	0.037	-0.067	0.200	0.325	187.342563	1.977791	1881.21	-1846.37
4	GUIDE	37879824	10.51	4745	0.051	0.087	0.153	0.250	187.728661	2.497183	-445.39	-1743.67
5	GUIDE	37879960	9.09	4750	-0.078	0.020	0.090	0.144	188.579259	2.444508	-2003.96	896.11
6	GUIDE	37880528	10.03	4744	0.040	-0.041	0.130	0.212	187.543867	2.231630	718.10	-1758.32
7	GUIDE	37880408	10.07	4747	-0.039	0.004	0.126	0.210	187.758191	2.290324	111.69	-1238.70

2.4 Star Slots

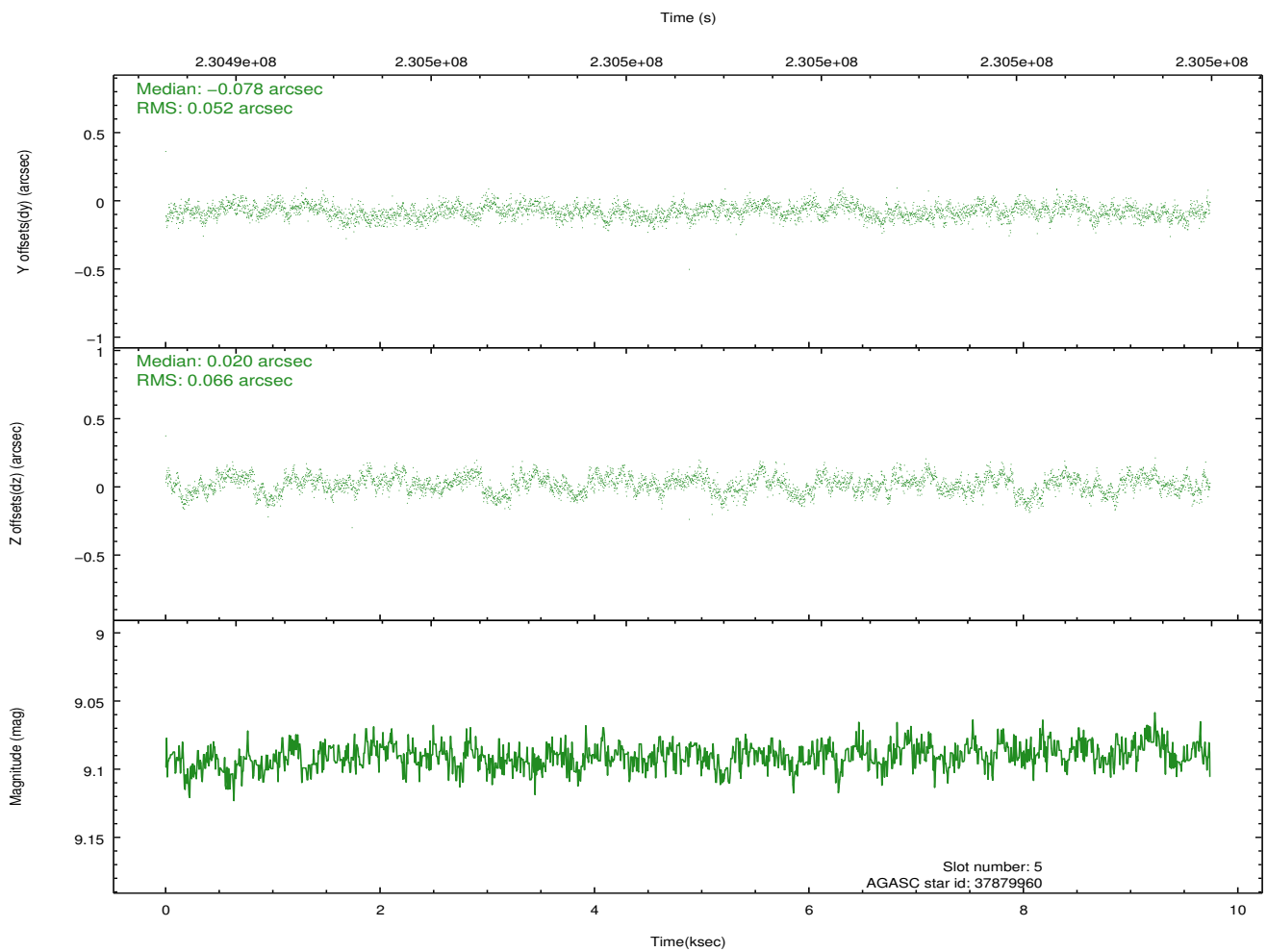
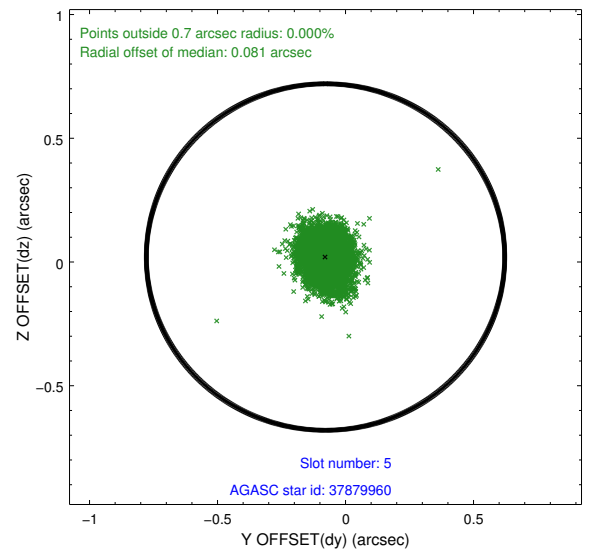
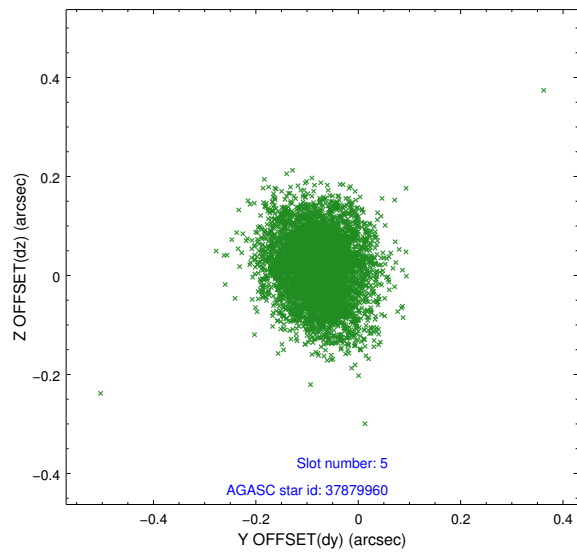
2.4.1 Slot 3



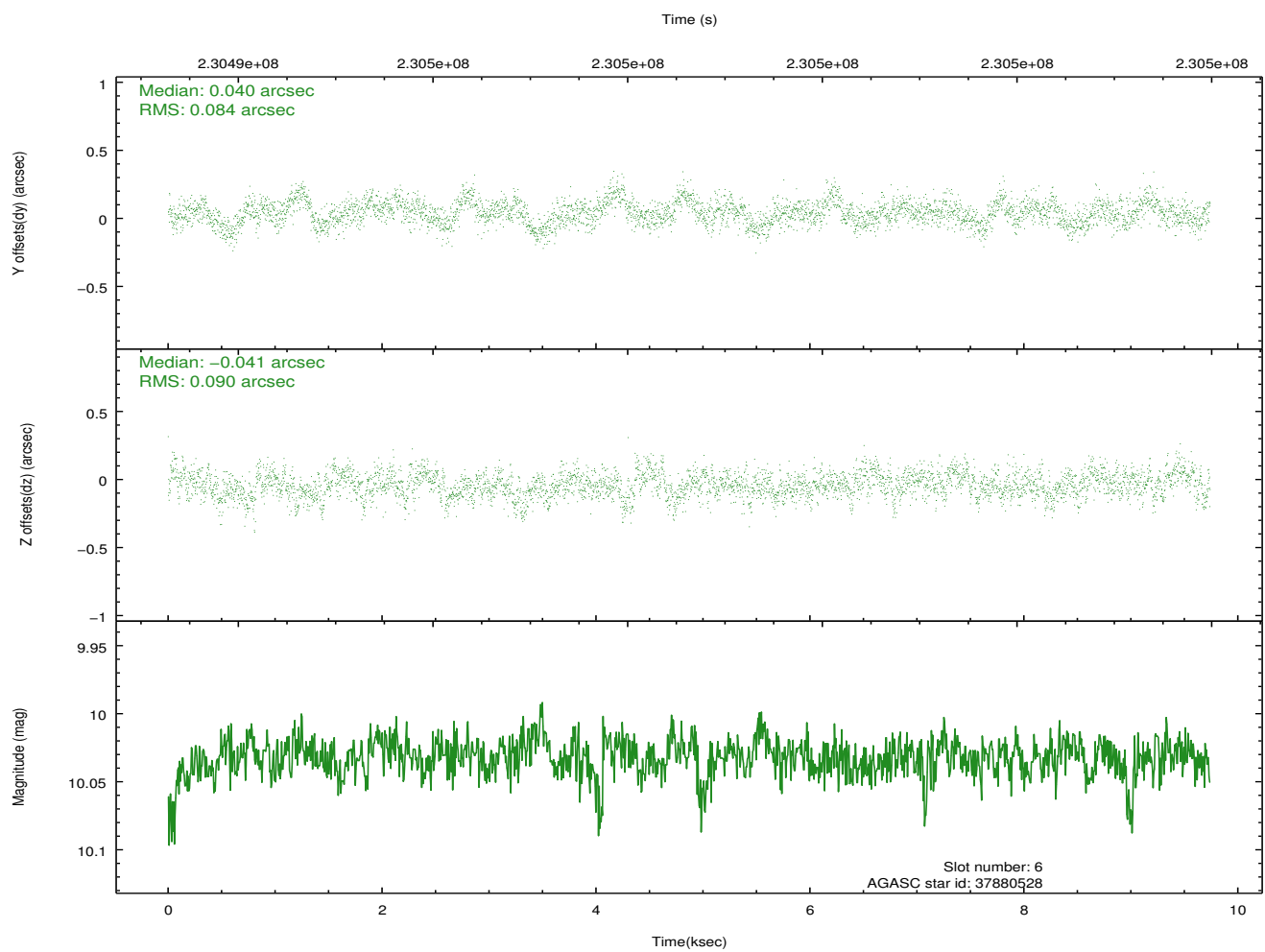
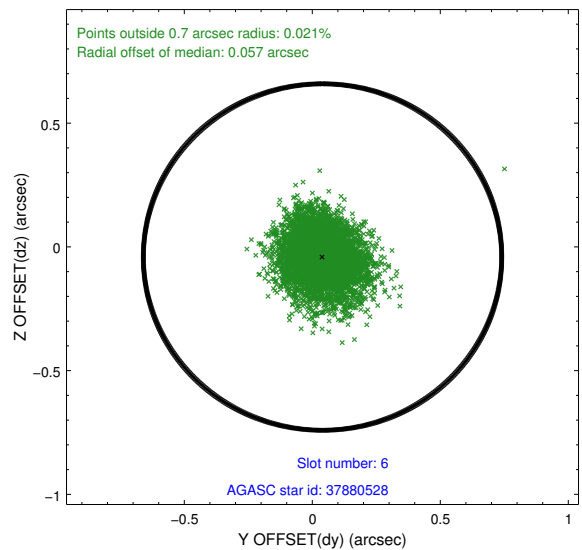
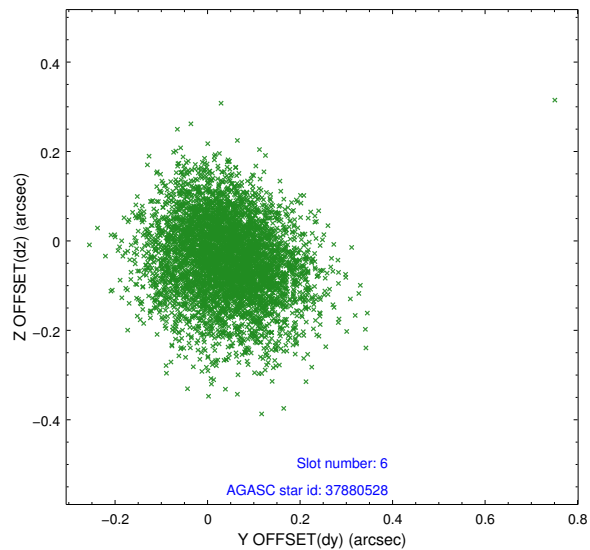
2.4.2 Slot 4



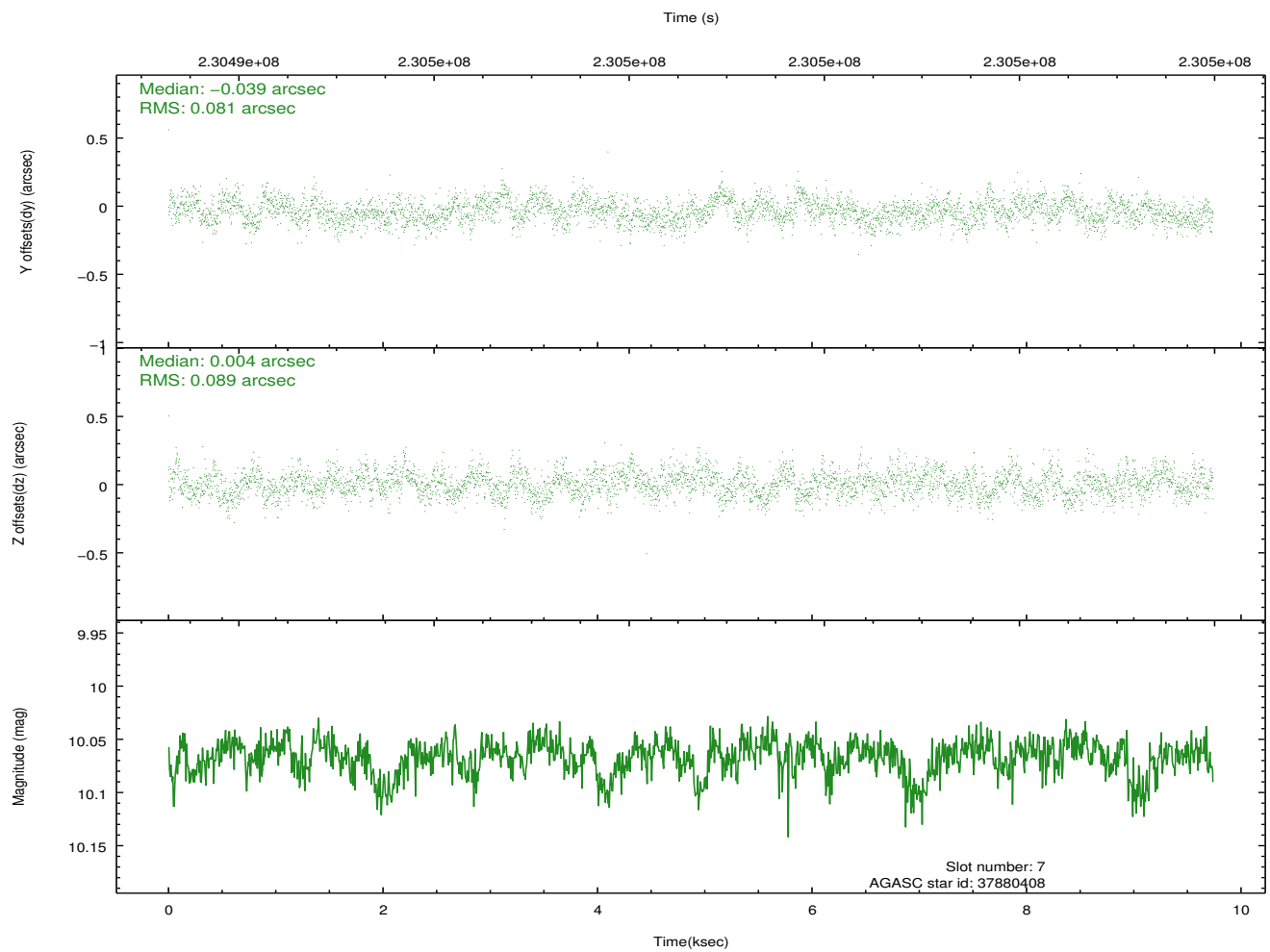
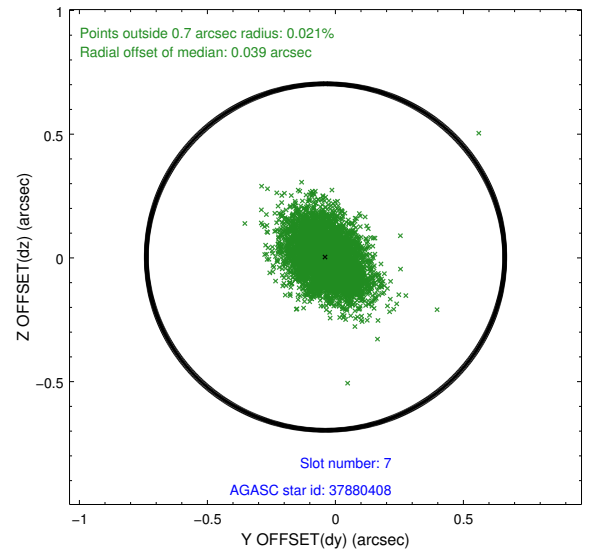
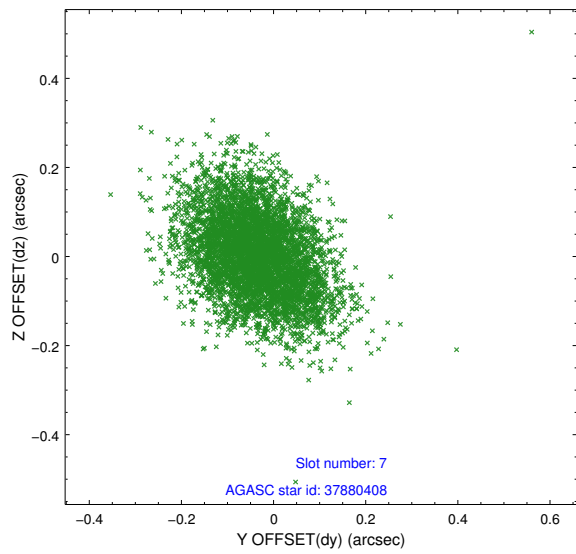
2.4.3 Slot 5



2.4.4 Slot 6

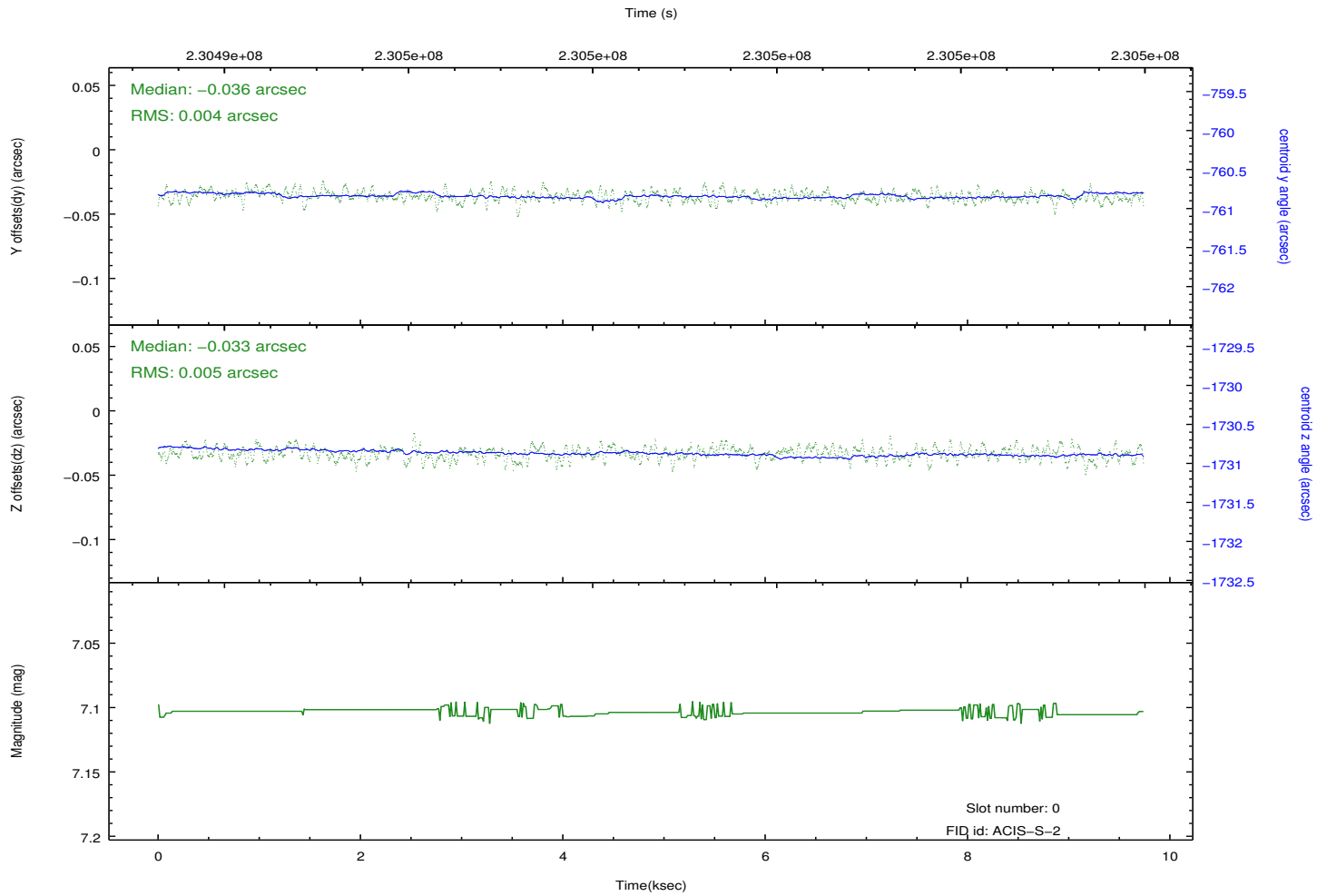
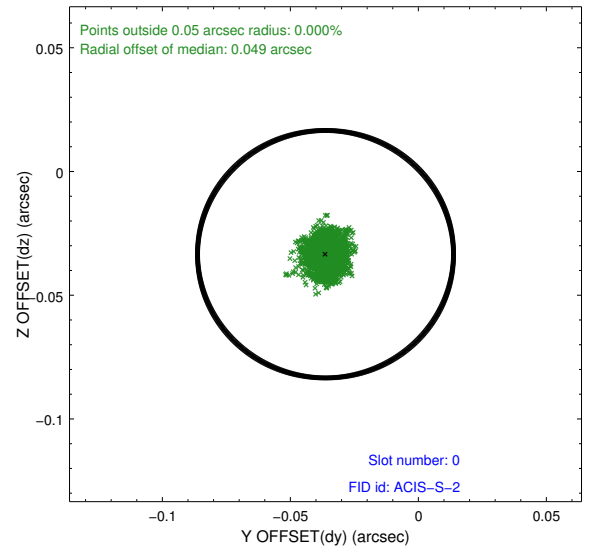
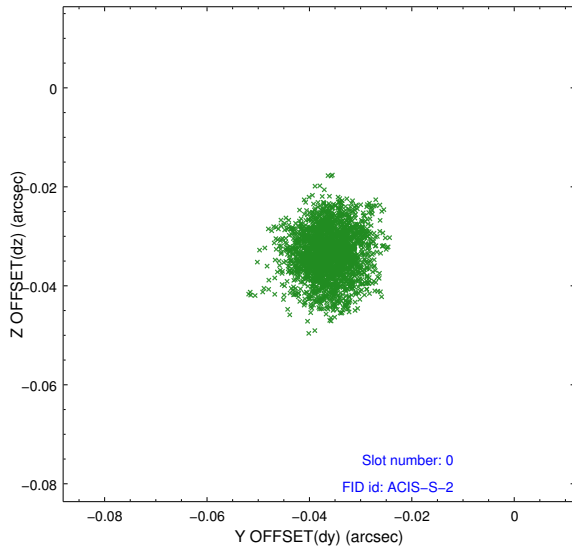


2.4.5 Slot 7

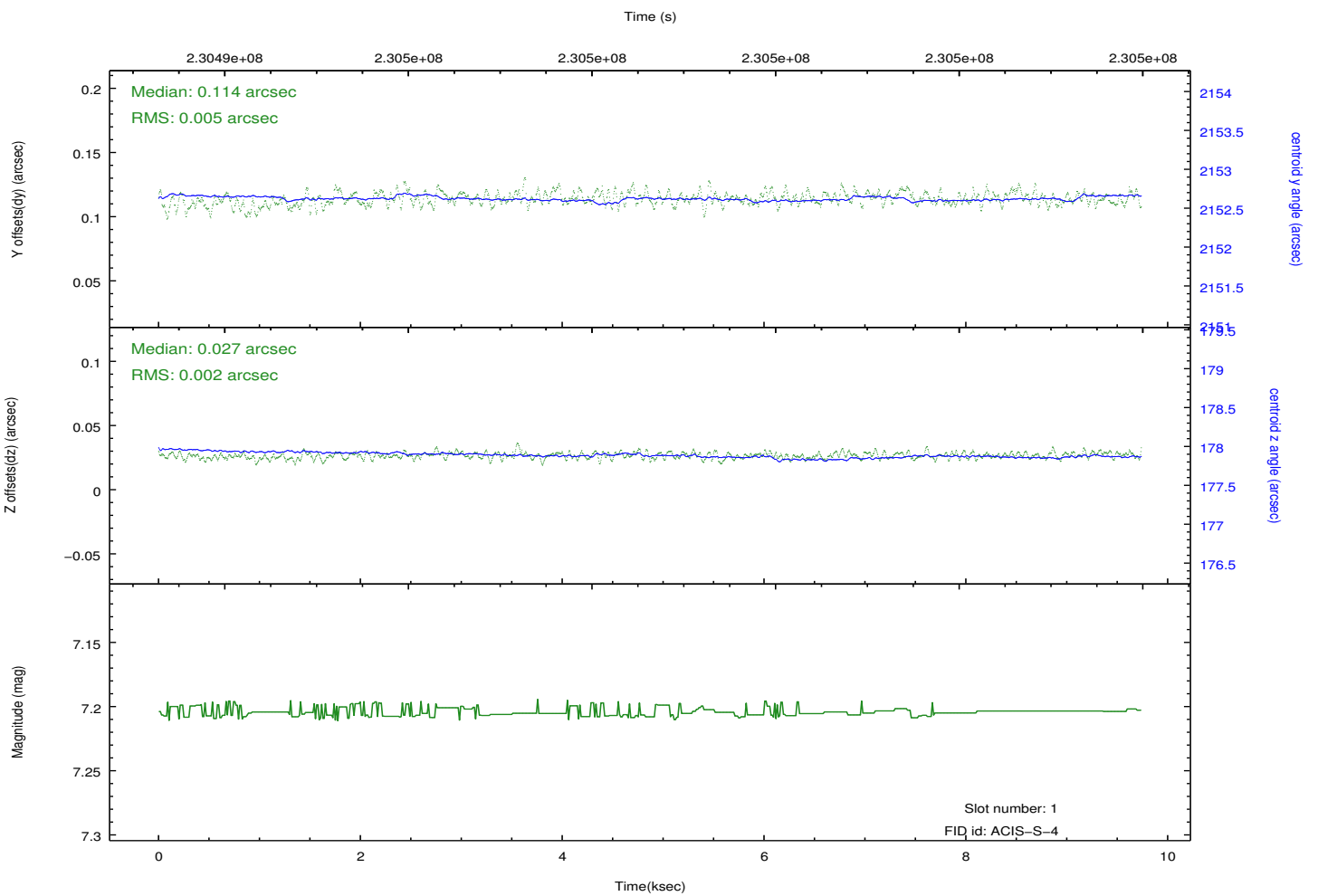
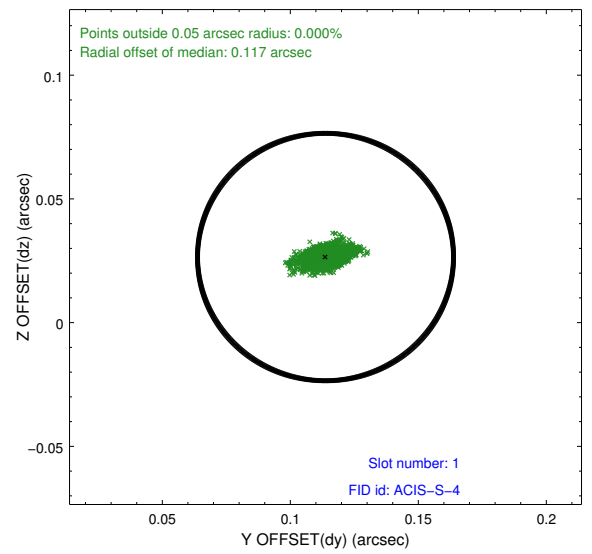
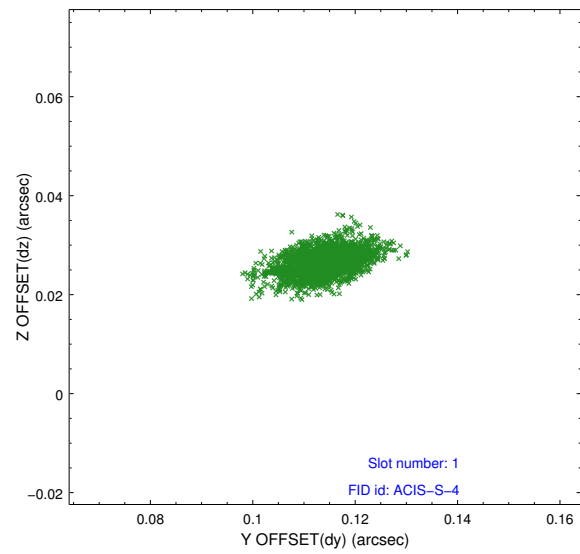


2.5 FID Slots

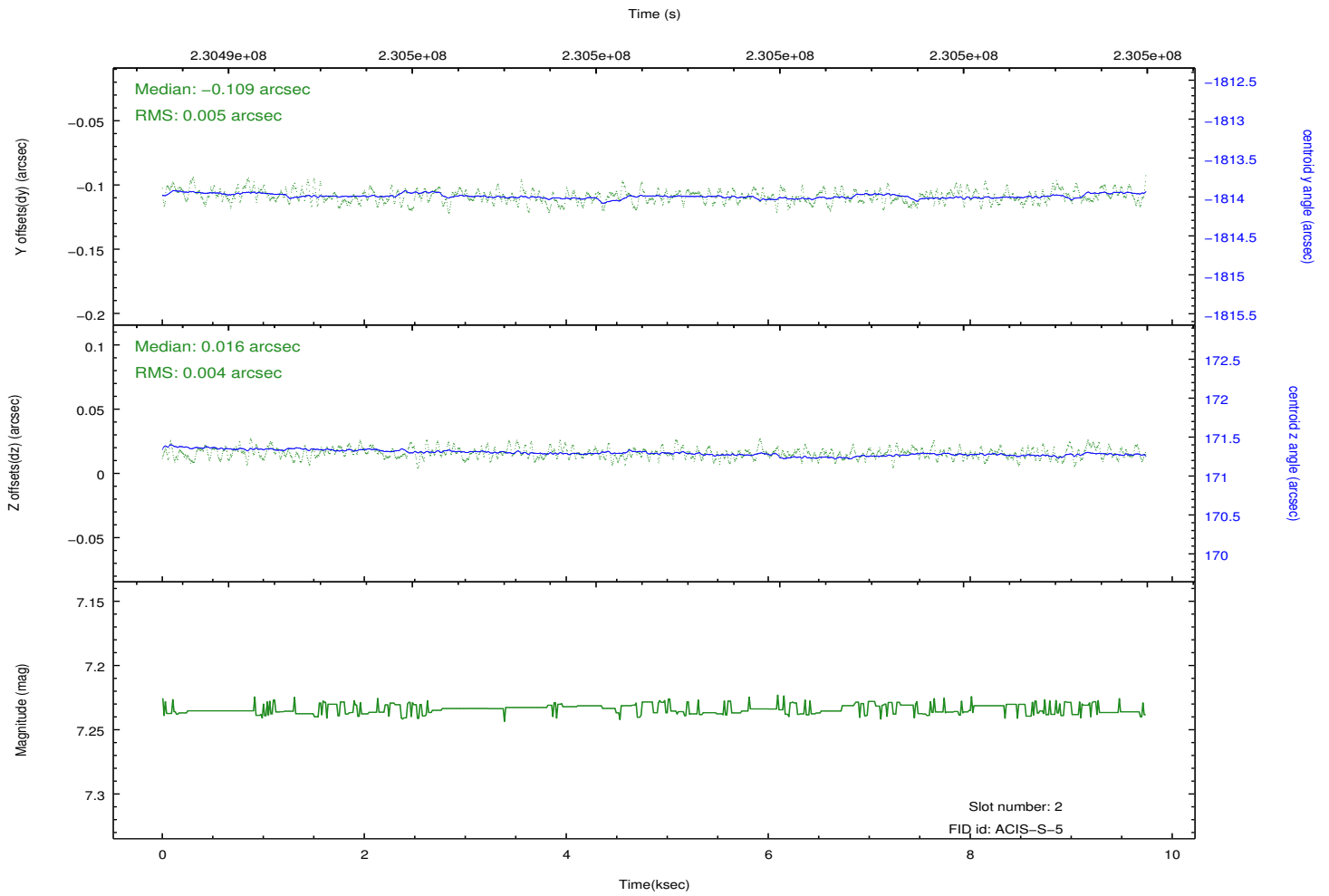
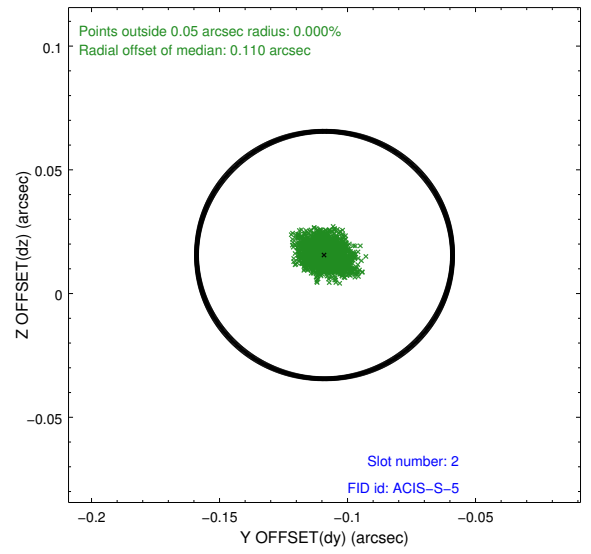
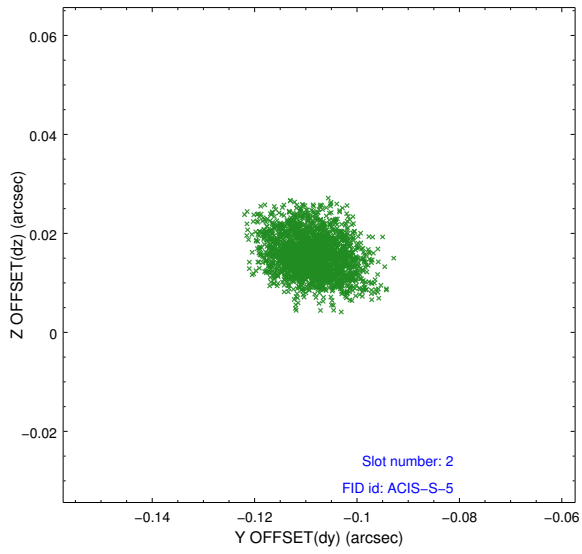
2.5.1 Slot 0



2.5.2 Slot 1



2.5.3 Slot 2



A Summary

A.1 Status

V&V Scientist	Jen Lauer
V&V Date (YYYY-MM-DD)	2013.01.15
V&V Edition	1
V&V Disposition and Status	OK
V&V Charge Time	9.734399

A.2 Comments