

V&V Reference Report

L2 ASCDS Version : 8.5.1

Observation 4961 - L2 Version 5
Chandra X-Ray Center

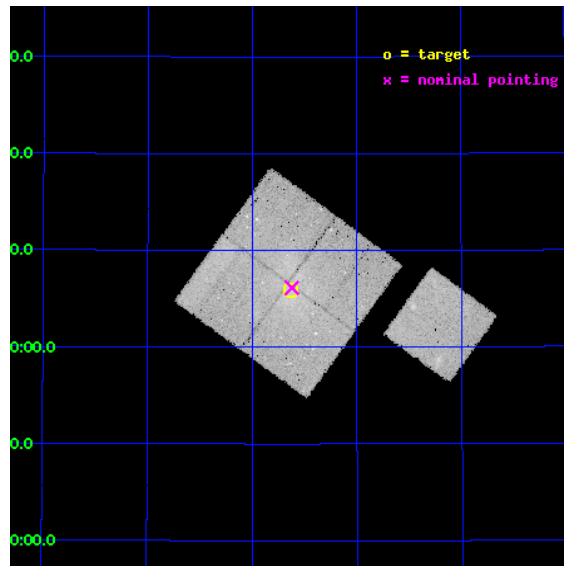
L2 Processing Date : Dec 17 2012

Contents

1	Front	2
2	OBI	3
2.1	OBI	3
2.1.1	Images	3
2.1.2	Bias	3
2.1.3	Parameters	4
2.1.4	Events	4
2.2	Compared Parameters	5
2.3	Aspect	6
2.4	Star Slots	9
2.4.1	Slot 4	9
2.4.2	Slot 5	10
2.4.3	Slot 6	11
2.4.4	Slot 7	12
2.5	FID Slots	13
2.5.1	Slot 0	13
2.5.2	Slot 1	14
2.5.3	Slot 2	15
A	Summary	16
A.1	Status	16
A.2	Comments	16

1 Front

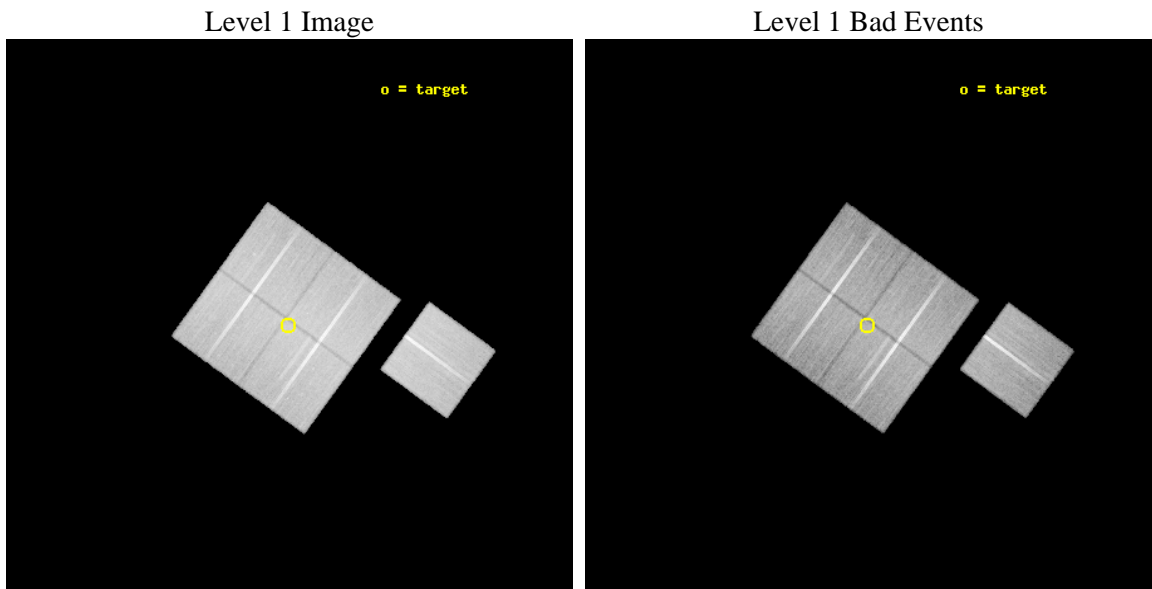
seq_num	800407	Sequence number
obs_id	4961	Observation id
title	Radio Relics and Merger Shocks in Clusters of Galaxies	Proposal ti
observer	Joshua Kempner	Principal investigator
object	Abell 1240	Source name
dtcycle	0	
cycle	P	events from which exps? Prim/Second/Both
ra_targ	170.906667	Observer's specified target RA [deg]
dec_targ	43.097778	Observer's specified target Dec [deg]
ra_nom	170.90521348149	Nominal RA [deg]
dec_nom	43.102316756458	Nominal Dec [deg]
roll_nom	126.02692695862	Nominal Roll [deg]
revision	5	Processing version of data
ontime	52027.176929295	Sum of GTIs [s]
livetime	51347.403560863	Livetime [s]
ontime0	52036.599899918	Sum of GTIs [s]
ontime1	52027.176919252	Sum of GTIs [s]
ontime2	52027.17693916	Sum of GTIs [s]
ontime3	52027.176929295	Sum of GTIs [s]
ontime6	52027.176899284	Sum of GTIs [s]
l2events	145910	Number of level 2 events



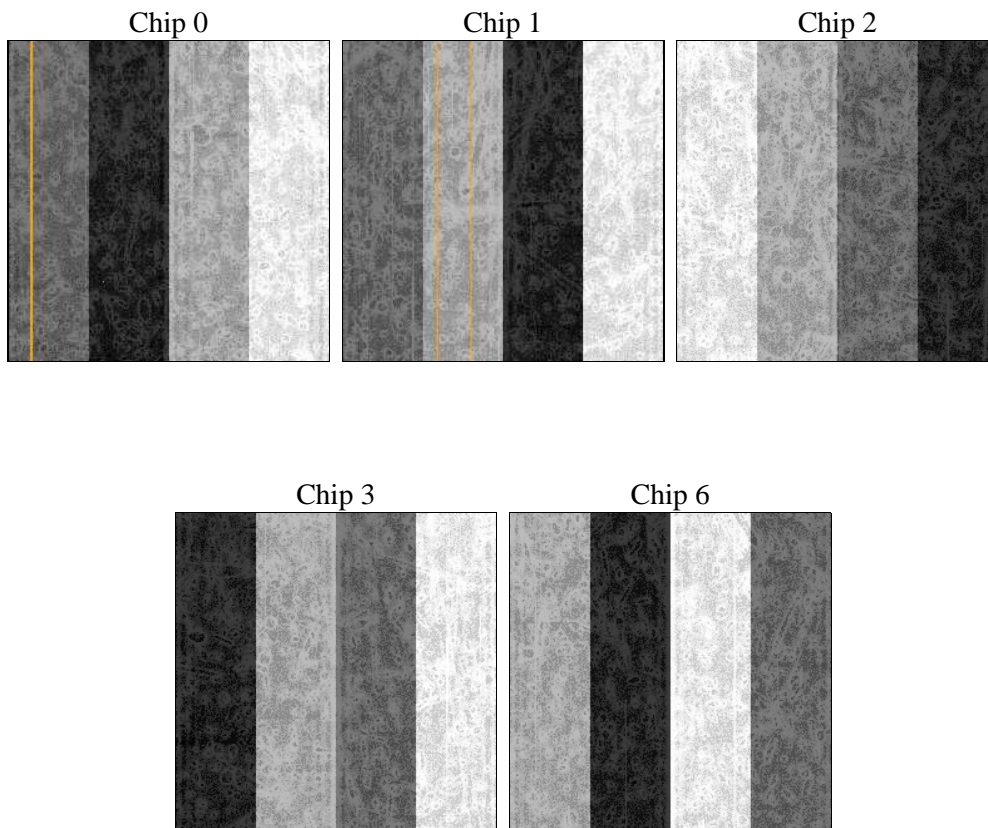
2 OBI

2.1 OBI

2.1.1 Images



2.1.2 Bias



2.1.3 Parameters

obi_num	0	Obi number	sched_exp_time	52000.000000	[s] Scheduled observation exposure time
ascdsver	8.5.1	Processing system revision	ontime	52027.176929295	Sum of GTIs [s]
caldbver	4.5.5	 	ontime0	52036.599899918	Sum of GTIs [s]
date	2012-12-17T19:20:20	Date and time of file creation	ontime1	52027.176919252	Sum of GTIs [s]
revision	5	Processing version of data	ontime2	52027.17693916	Sum of GTIs [s]
			ontime3	52027.176929295	Sum of GTIs [s]
			ontime6	52027.176899284	Sum of GTIs [s]
			l1events	1584075	Number of level 1 events

2.1.4 Events

	ccd 0	ccd 1	ccd 2	ccd 3	ccd 6
level 1 events	299031	305440	330614	322603	326387
rejected events	264239	267705	296827	287906	293682
rejected %	88%	87%	89%	89%	89%

	ccd 0	ccd 1	ccd 2	ccd 3	ccd 6
grade 0 events	13473	14395	13656	14462	11454
	4%	4%	4%	4%	3%
grade 1 events	175	165	189	186	126
	0%	0%	0%	0%	0%
grade 2 events	7588	8192	7325	6925	7007
	2%	2%	2%	2%	2%
grade 3 events	3865	4007	3552	3666	3582
	1%	1%	1%	1%	1%
grade 4 events	3596	3962	3611	3609	3644
	1%	1%	1%	1%	1%
grade 5 events	11394	12131	10836	12672	12464
	3%	3%	3%	3%	3%
grade 6 events	6274	7182	5645	6039	7021
	2%	2%	1%	1%	2%
grade 7 events	252666	255406	285800	275044	281089
	84%	83%	86%	85%	86%

2.2 Compared Parameters

Parameter	Planned	Actual	Parameter	Planned	Actual
Instrument	ACIS	ACIS	Obspar format version number	7	7
Detector	ACIS-01236	ACIS-01236	Obspar file type	PREDICTED	ACTUAL
Grating	NONE	NONE	Obspar update status	NONE	UPDATED
Data mode	VFAINT	VFAINT	Number of optional ACIS chips dropped	0	0
Observation mode	POINTING	POINTING	On-chip summing requested	N	N
[deg] Pointing RA	170.939555	170.905213481495	Subarray requested	NONE	NONE
[deg] Pointing Dec	43.091266	43.10231675645833	Alternating exposures requested	N	N
[deg] Pointing Roll	125.794790	126.0269269586236	[s] Primary exposure time	0.000000	3.1
[mm] SIM focus pos	-0.782348	-0.7809083437167272			
[mm] SIM defocus	0	0.001439871863259334			
[mm] SIM translation stage pos	-233.592463	-233.5874344608287			
[mm] SIM translation stage offset	0	-0.005018542100998502			
[s] Observation start time (MET)	224016736.184000	224015778.45151			
Observation start date	2005-02-05T18:51:12	2005-02-05T18:36:18			
[s] Observation end time (MET)	224068736.184000	224069458.21643			
Observation end date	2005-02-06T09:17:52	2005-02-06T09:30:58			
Read mode	TIMED	TIMED			

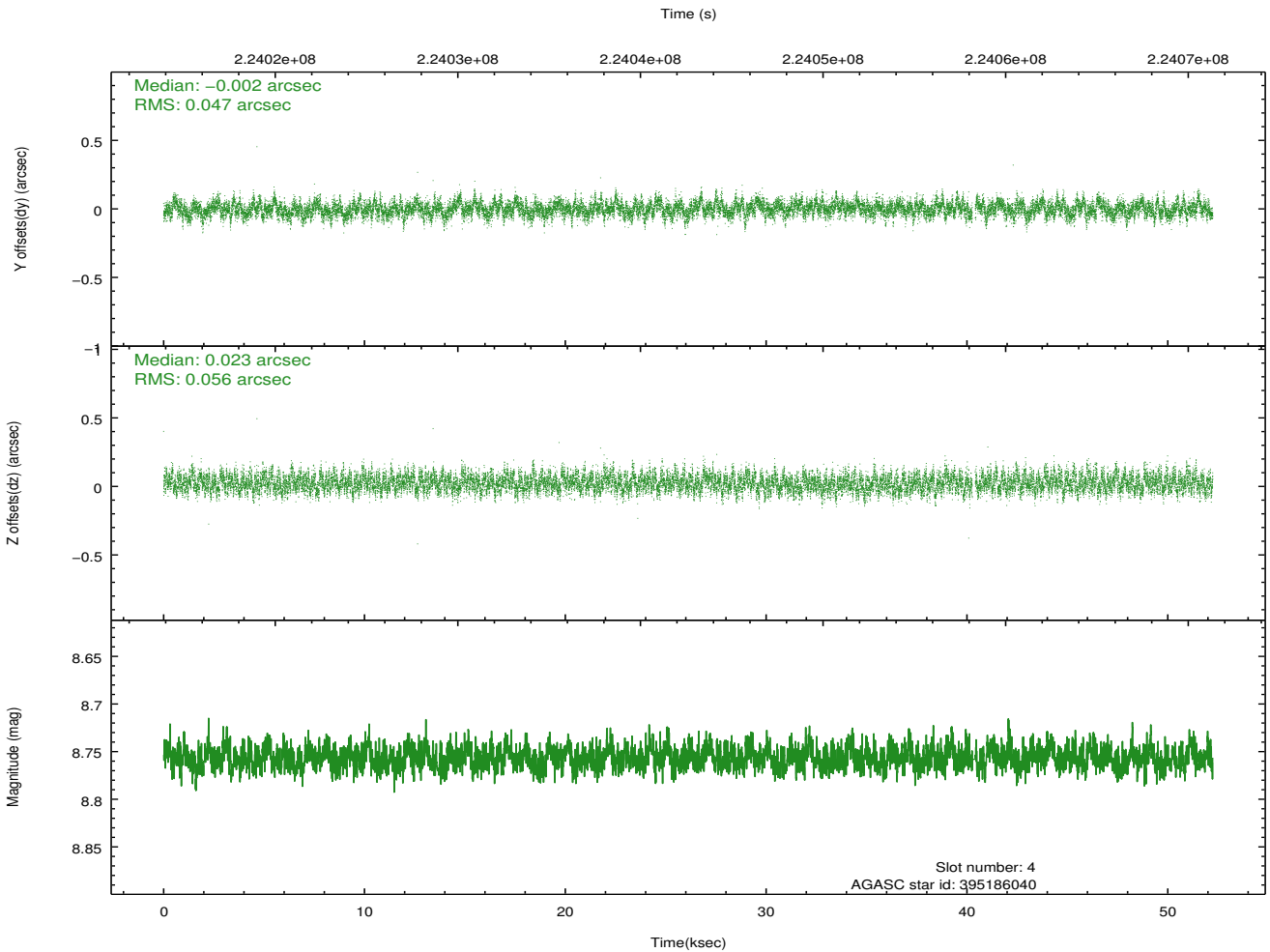
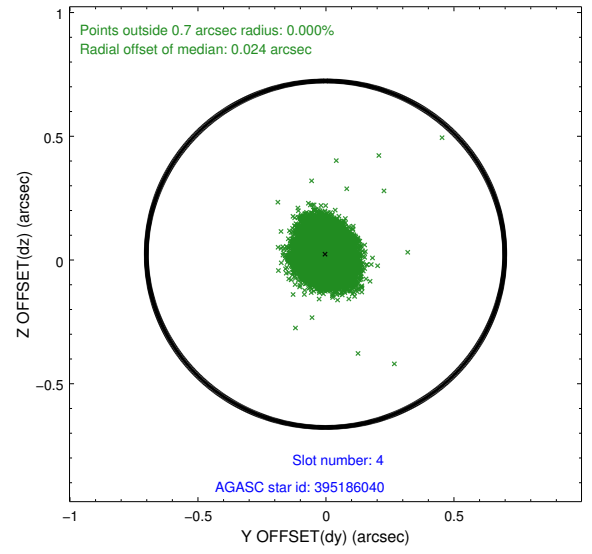
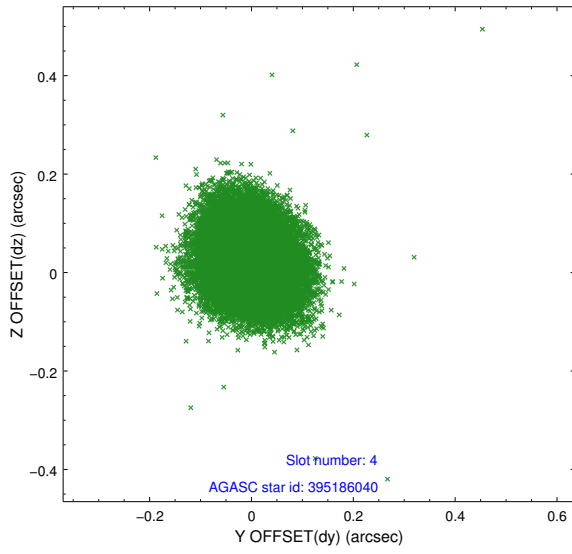
2.3 Aspect

Slot Statistics

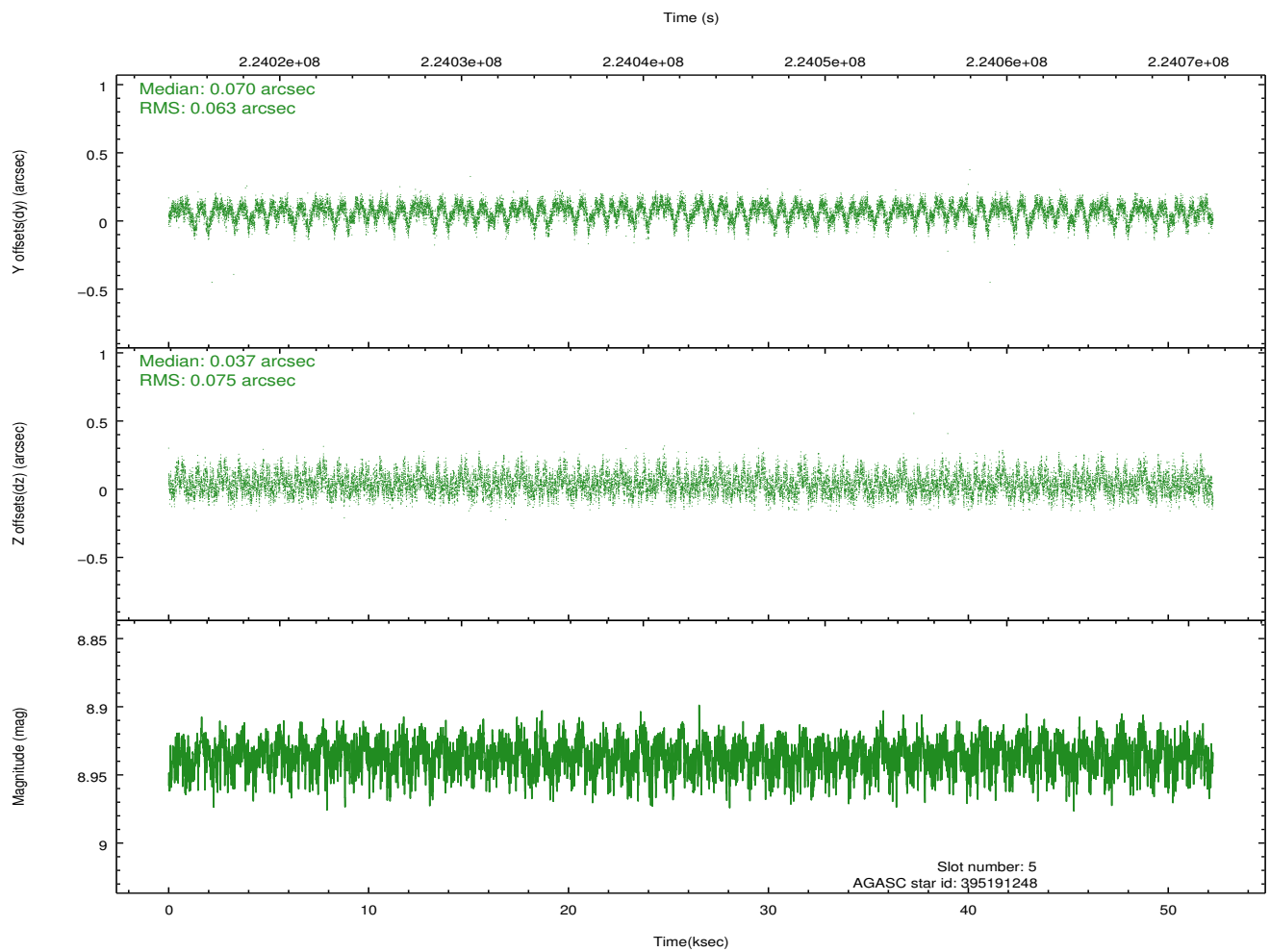
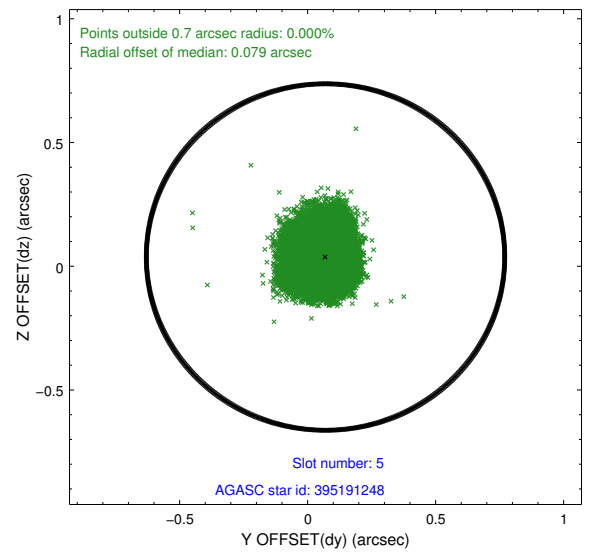
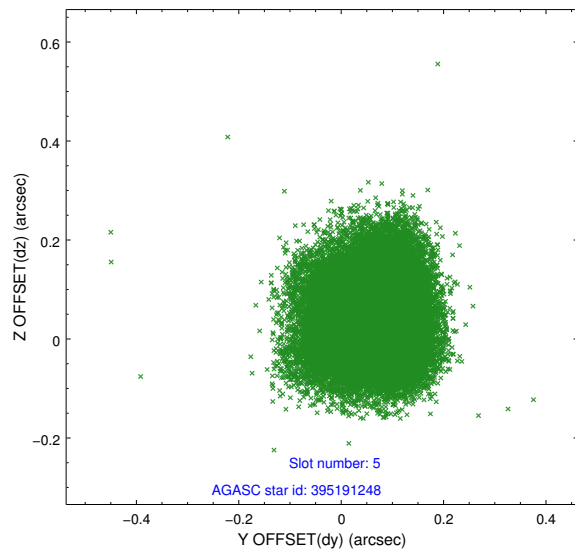
slot	status	id	mag	n_pts	med_dy	med_dz	dr1	dr2	ra	dec	mean_y	mean_z
0	FID	ACIS-I-1	7.25	12742	0.000	0.025	0.007	0.013	0.000000	0.000000	932.39	-833.28
1	FID	ACIS-I-5	7.23	12743	-0.155	0.024	0.007	0.012	0.000000	0.000000	-1815.89	1064.21
2	FID	ACIS-I-6	7.25	12742	0.064	0.021	0.007	0.012	0.000000	0.000000	398.02	1708.69
3	OMITTED		0.00	0	0.000	0.000	0.000	0.000	0.000000	0.000000	0.00	0.00
4	GUIDE	395186040	8.76	25399	-0.002	0.023	0.078	0.124	171.276885	43.215973	-151.56	-981.24
5	GUIDE	395191248	8.94	25477	0.070	0.037	0.105	0.168	171.923511	43.094424	-1491.13	-2113.14
6	GUIDE	395193976	10.23	25397	-0.025	-0.061	0.185	0.297	171.424955	43.424374	233.53	-1732.66
7	GUIDE	395194640	7.83	25483	-0.047	0.001	0.070	0.111	171.538291	42.732504	-1968.62	-531.83

2.4 Star Slots

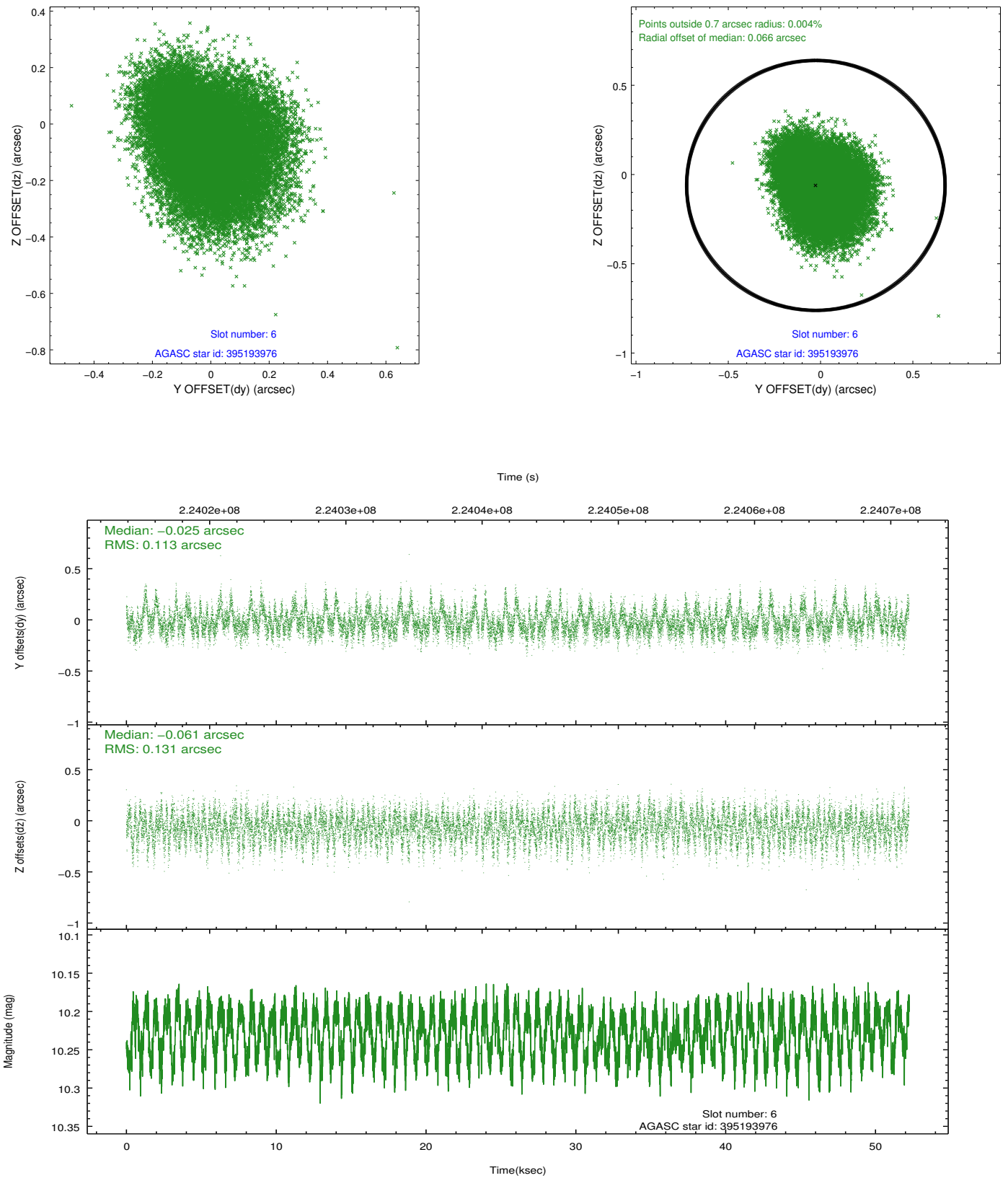
2.4.1 Slot 4



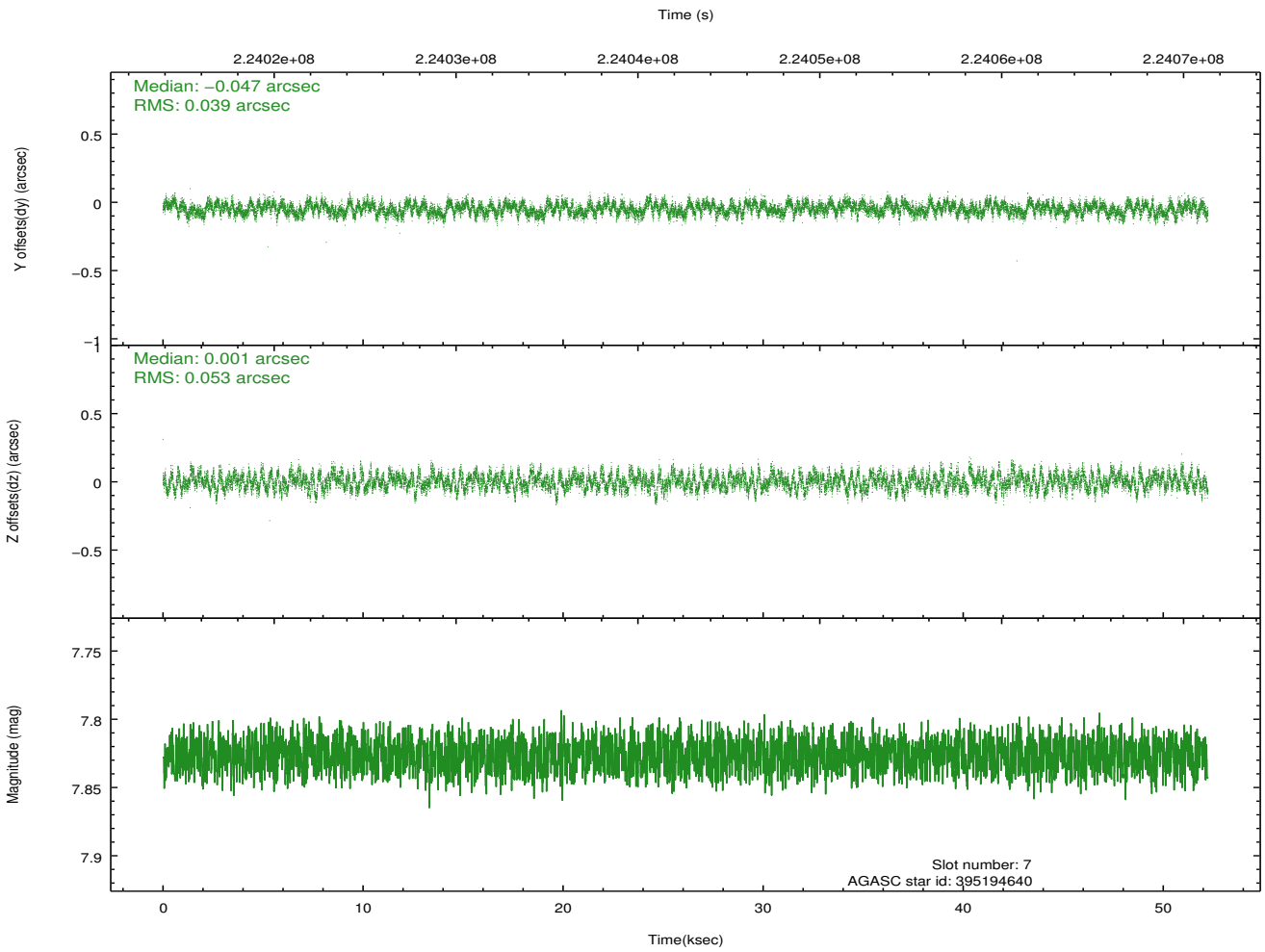
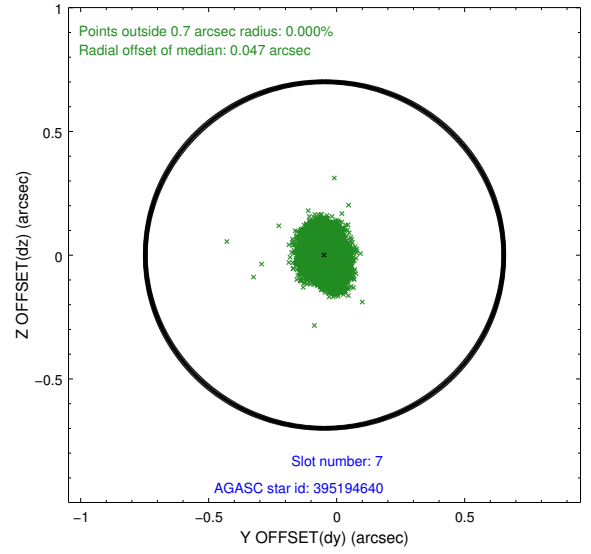
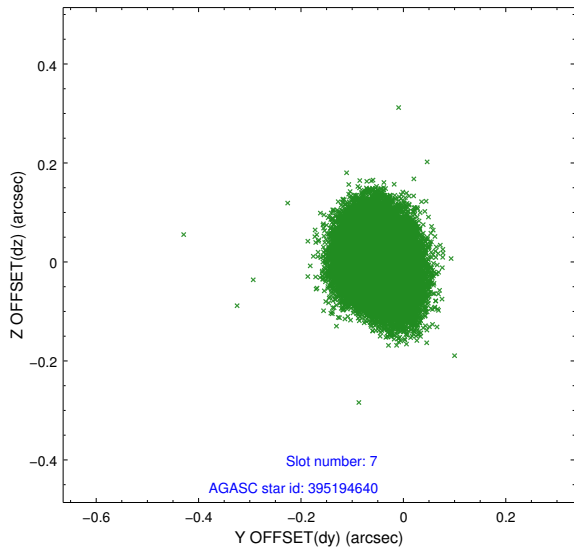
2.4.2 Slot 5



2.4.3 Slot 6

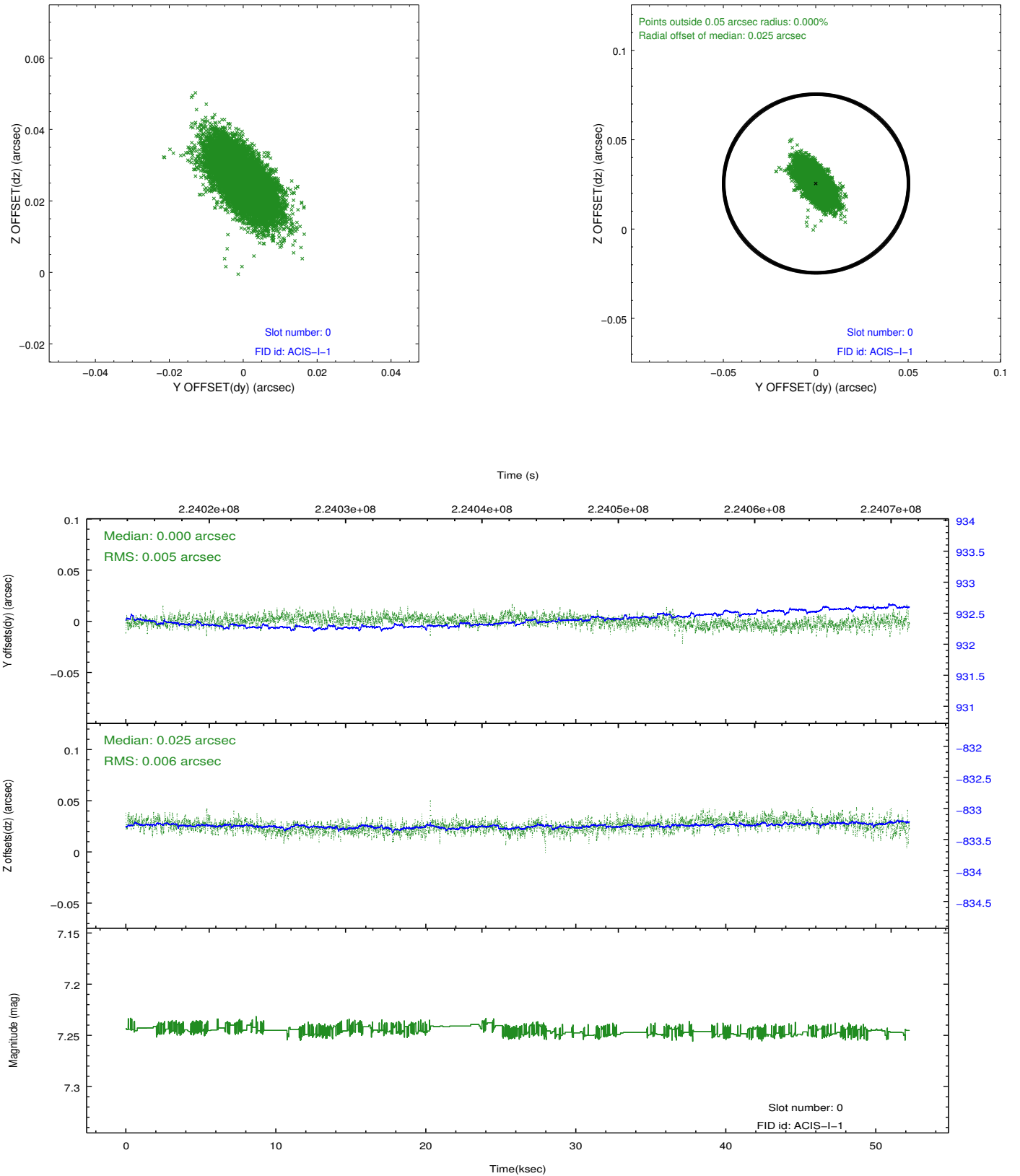


2.4.4 Slot 7

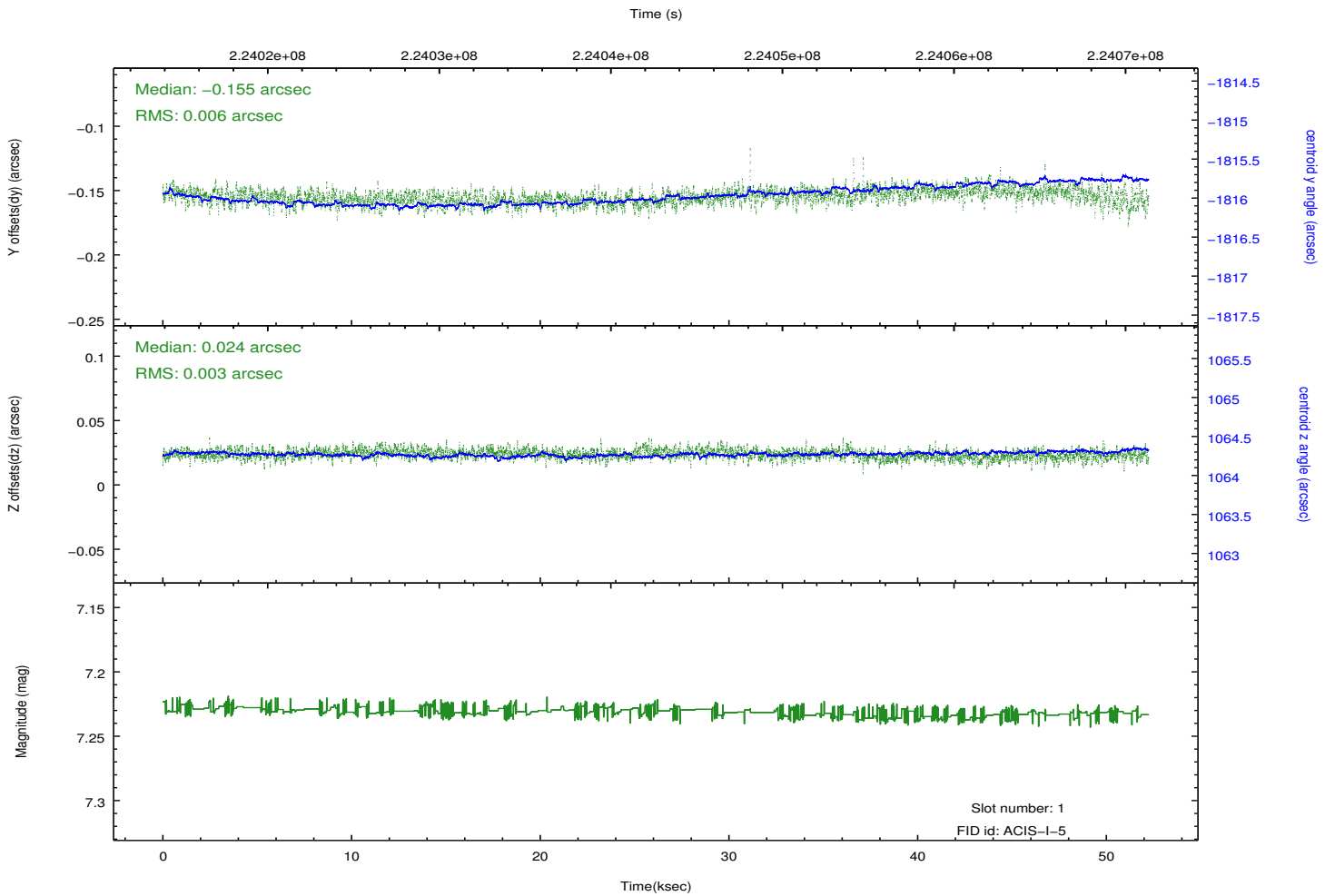
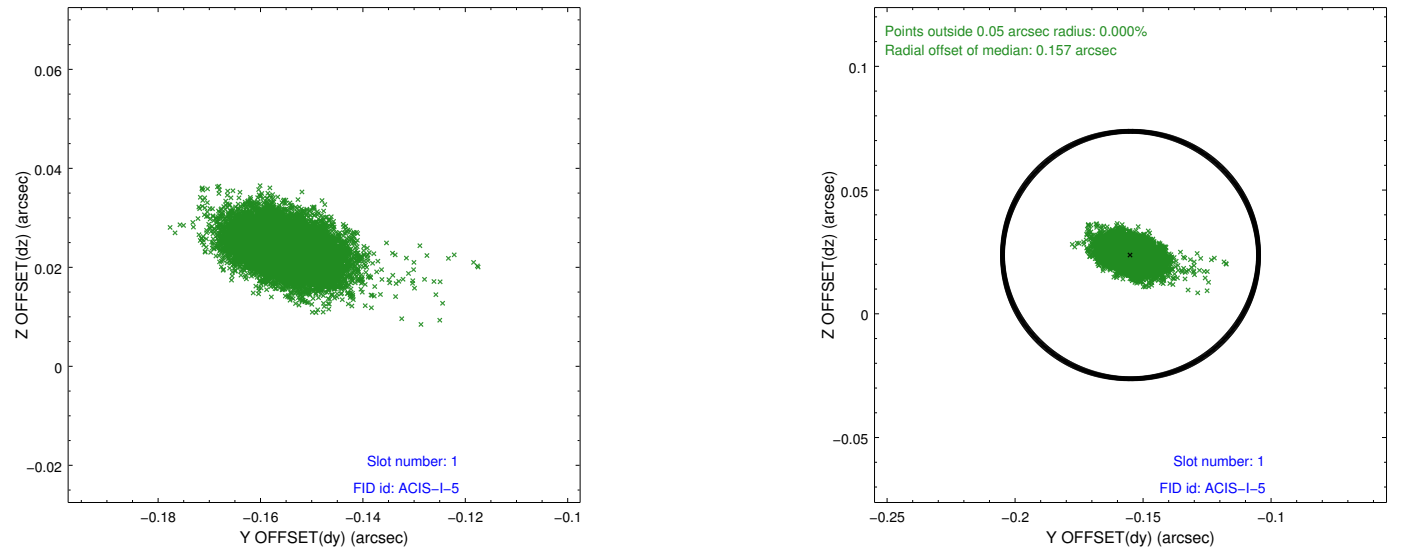


2.5 FID Slots

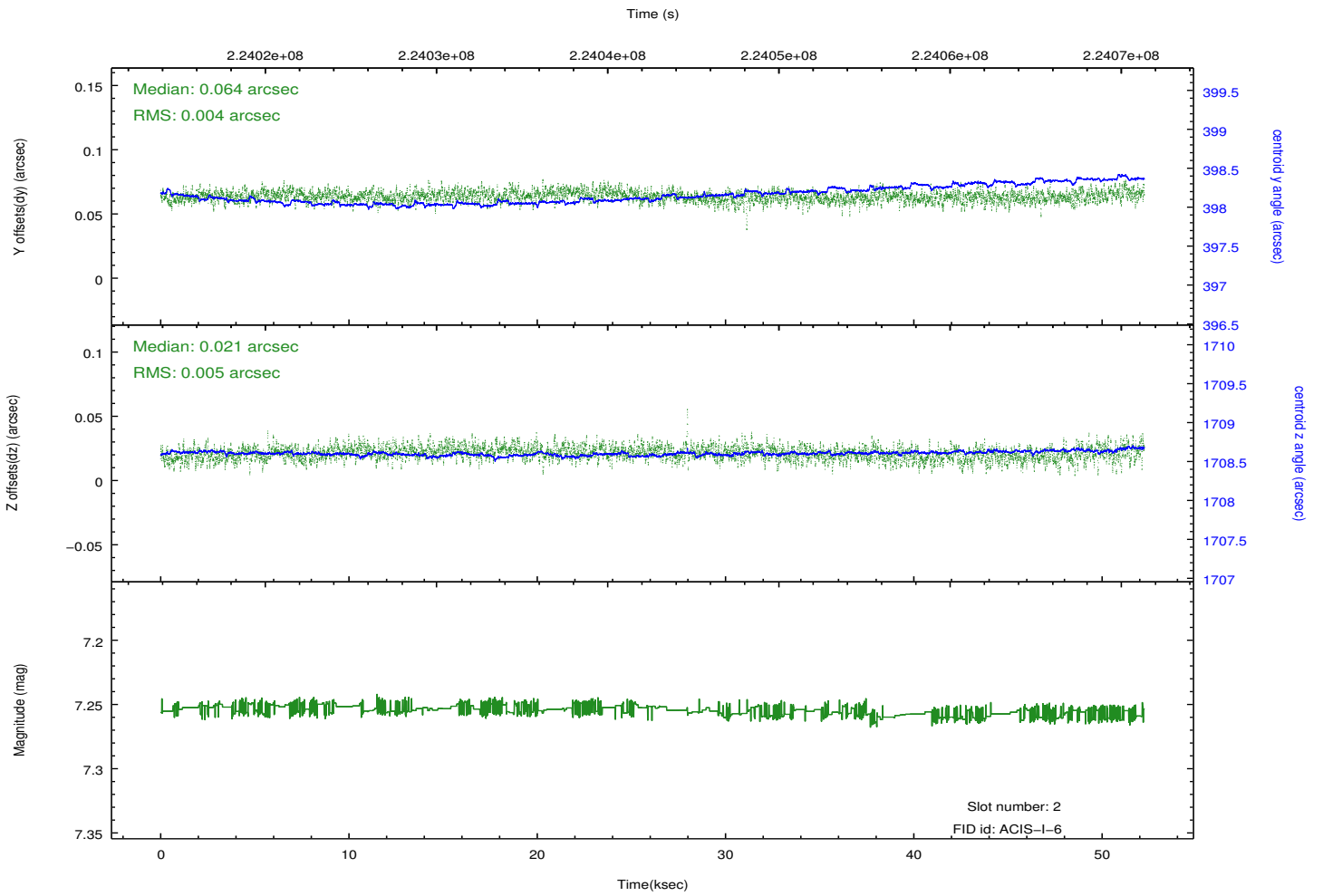
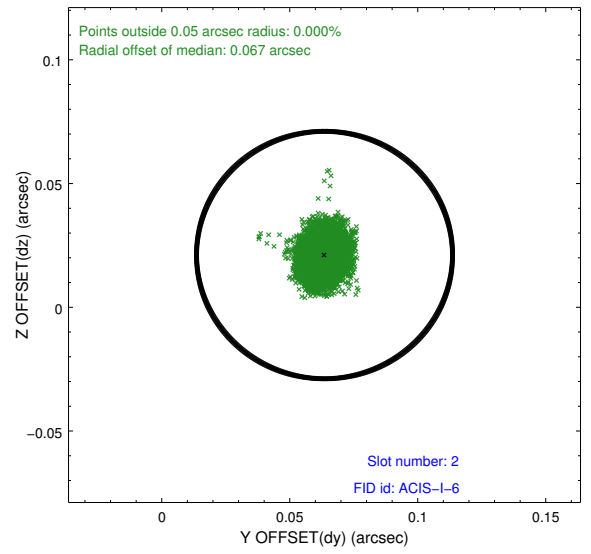
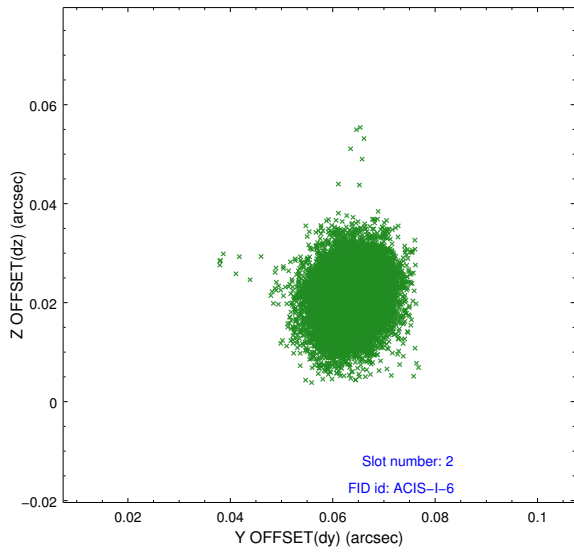
2.5.1 Slot 0



2.5.2 Slot 1



2.5.3 Slot 2



A Summary

A.1 Status

V&V Scientist	Jen Lauer
V&V Date (YYYY-MM-DD)	2013.01.10
V&V Edition	1
V&V Disposition and Status	OK
V&V Charge Time	52.02717

A.2 Comments

The guide star in slot 3 was removed from the aspect solution due to poor data quality. The aspect solution is improved by the removal of this guide star from the solution.