

V&V Reference Report

L2 ASCDS Version : 8.4.5

Observation 4971 - L2 Version 3
Chandra X-Ray Center

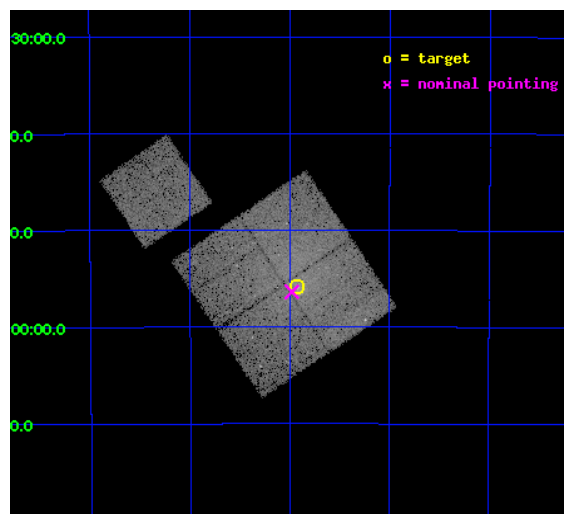
L2 Processing Date : Nov 8 2012

Contents

1	Front	2
2	OBI	3
2.1	OBI	3
2.1.1	Images	3
2.1.2	Bias	3
2.1.3	Parameters	4
2.1.4	Events	4
2.2	Compared Parameters	5
2.3	Aspect	6
2.4	Star Slots	9
2.4.1	Slot 3	9
2.4.2	Slot 4	10
2.4.3	Slot 5	11
2.4.4	Slot 6	12
2.4.5	Slot 7	13
2.5	FID Slots	14
2.5.1	Slot 0	14
2.5.2	Slot 1	15
2.5.3	Slot 2	16
A	Summary	17
A.1	Status	17
A.2	Comments	17

1 Front

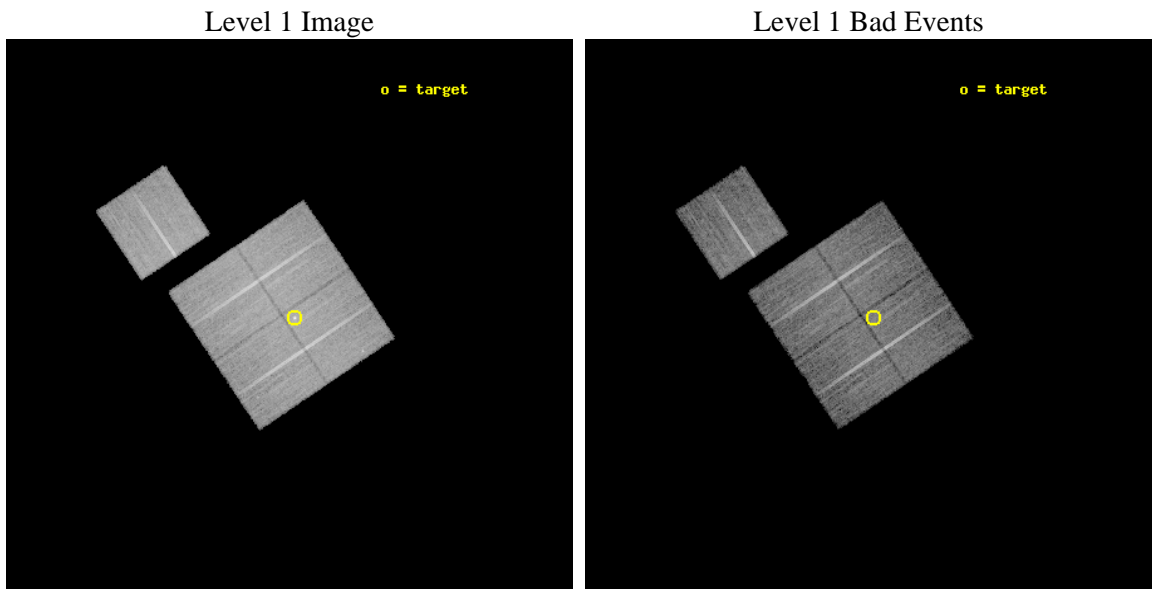
seq_num	800416	Sequence number
obs_id	4971	Observation id
title	Testing Formation Models and Heating and Feedback Mechanisms In Galaxy Groups	Proposal title
observer	Dr. william forman	Principal investigator
object	IC1633	Source name
dtcycle	0	
cycle	P	events from which exps? Prim/Second/Both
ra_targ	17.48125	Observer's specified target RA [deg]
dec_targ	-45.930833	Observer's specified target Dec [deg]
ra_nom	17.494807254574	Nominal RA [deg]
dec_nom	-45.939385954122	Nominal Dec [deg]
roll_nom	326.12928241677	Nominal Roll [deg]
revision	3	Processing version of data
ontime	25119.258951515	Sum of GTIs [s]
livetime	24791.057340784	Livetime [s]
ontime0	25119.258981436	Sum of GTIs [s]
ontime1	25119.258951515	Sum of GTIs [s]
ontime2	25122.399951667	Sum of GTIs [s]
ontime3	25116.117981285	Sum of GTIs [s]
ontime6	25122.398462176	Sum of GTIs [s]
l2events	80993	Number of level 2 events



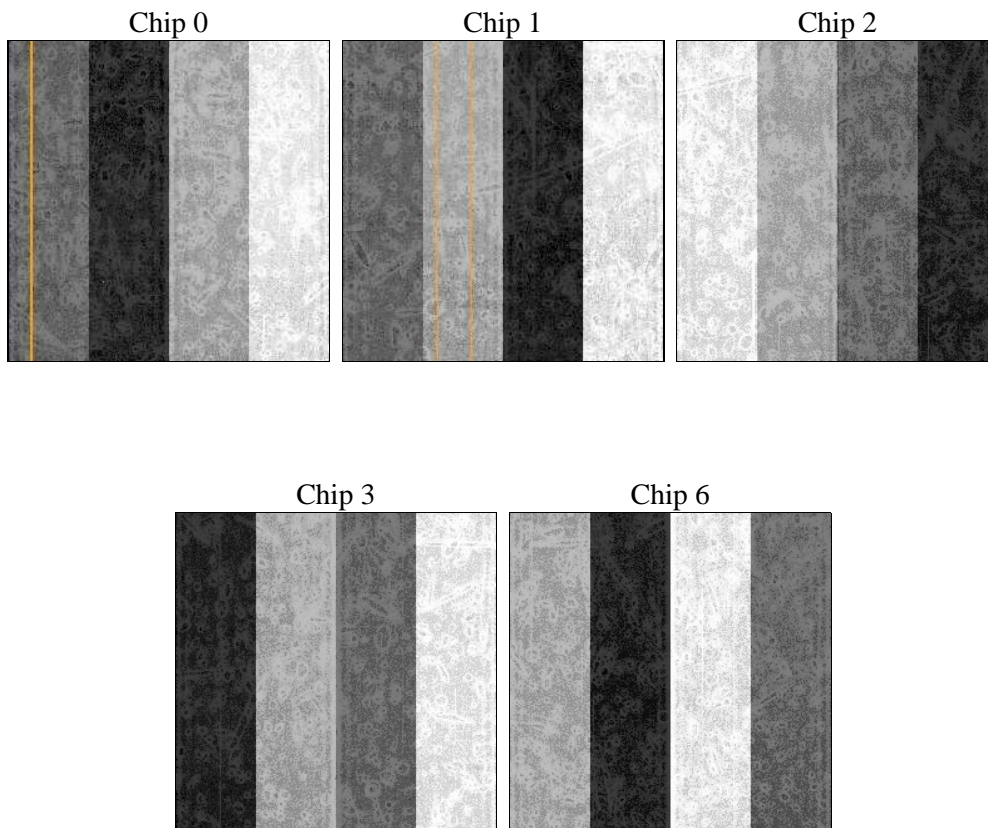
2 OBI

2.1 OBI

2.1.1 Images



2.1.2 Bias



2.1.3 Parameters

obi_num	0	Obi number	sched_exp_time	25000.000000	[s] Scheduled observation exposure time
ascdsver	8.4.5	Processing system revision	ontime	25119.258951515	Sum of GTIs [s]
caldbver	4.5.2	 	ontime0	25119.258981436	Sum of GTIs [s]
date	2012-11-08T02:32:57	Date and time of file creation	ontime1	25119.258951515	Sum of GTIs [s]
revision	3	Processing version of data	ontime2	25122.399951667	Sum of GTIs [s]
			ontime3	25116.117981285	Sum of GTIs [s]
			ontime6	25122.398462176	Sum of GTIs [s]
			l1events	556385	Number of level 1 events

2.1.4 Events

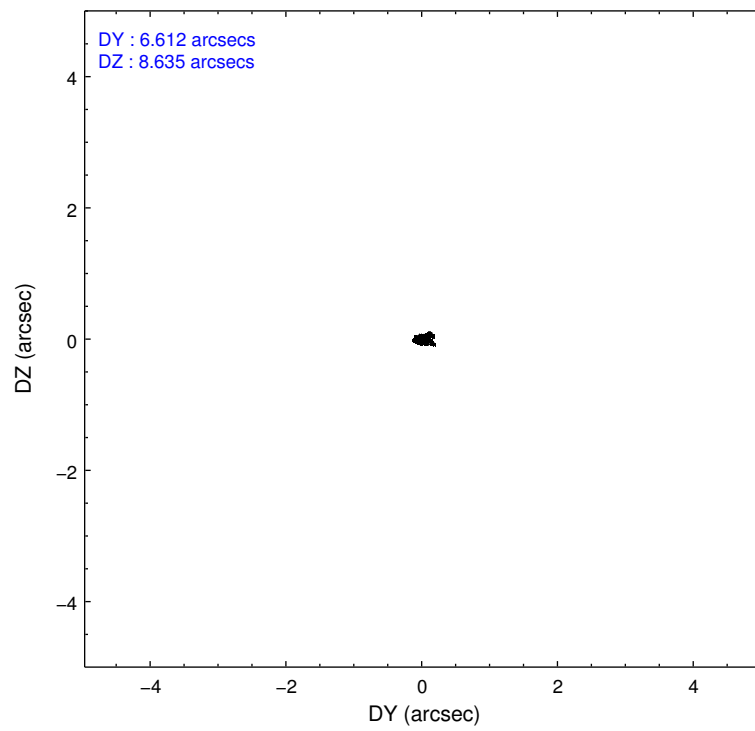
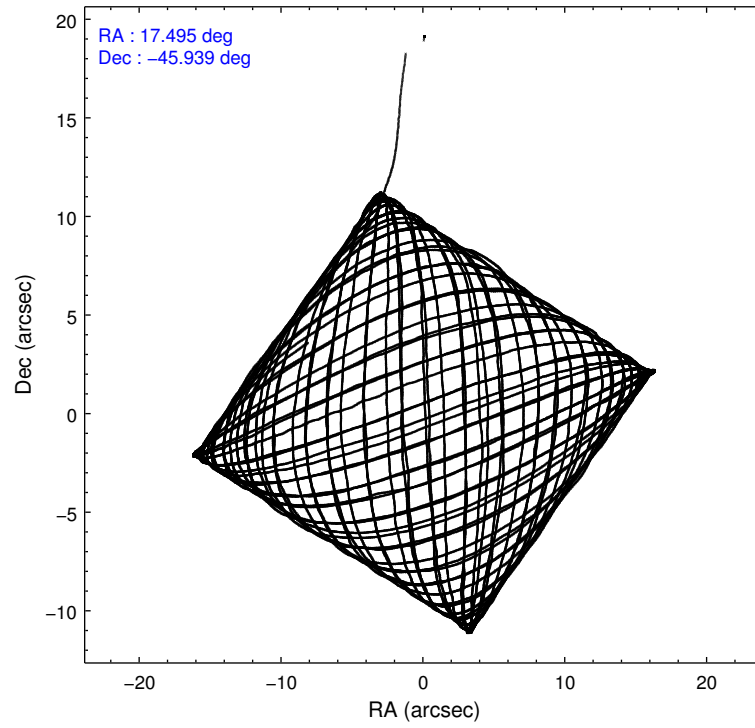
	ccd 0	ccd 1	ccd 2	ccd 3	ccd 6
level 1 events	103168	113343	116630	114437	108807
rejected events	86991	88418	99075	94045	95161
rejected %	84%	78%	84%	82%	87%

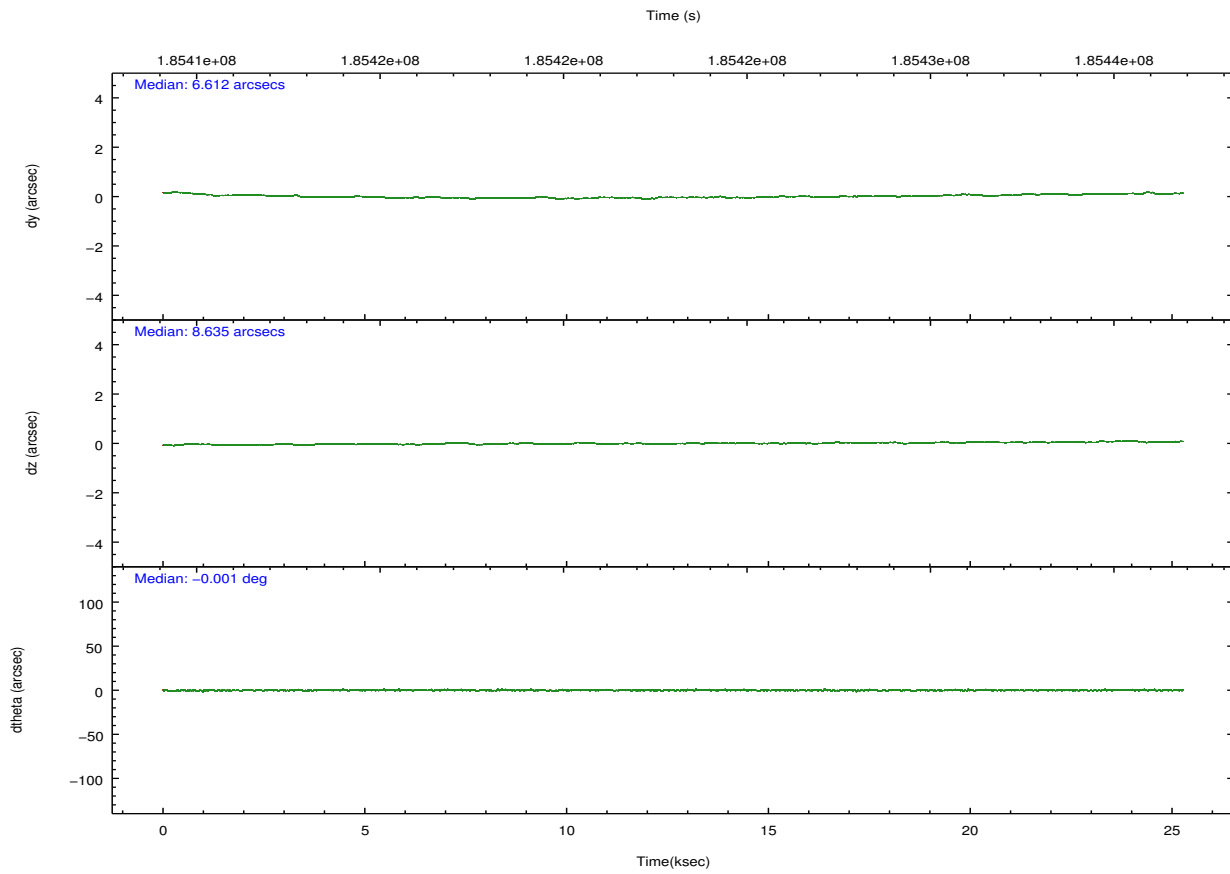
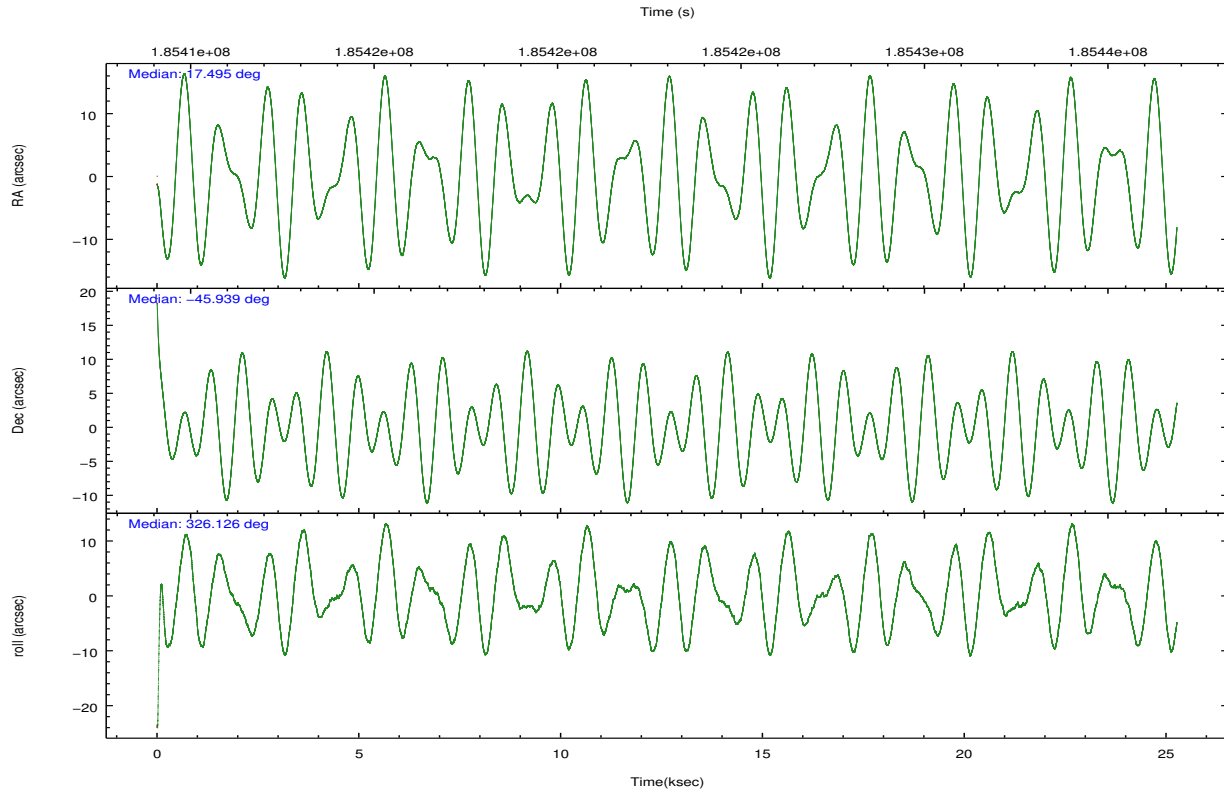
	ccd 0	ccd 1	ccd 2	ccd 3	ccd 6
grade 0 events	8153	14774	9486	11965	5969
	7%	13%	8%	10%	5%
grade 1 events	59	88	83	92	45
	0%	0%	0%	0%	0%
grade 2 events	3004	4002	3124	3169	2585
	2%	3%	2%	2%	2%
grade 3 events	1429	1697	1375	1487	1309
	1%	1%	1%	1%	1%
grade 4 events	1289	1671	1453	1502	1290
	1%	1%	1%	1%	1%
grade 5 events	3978	4189	3754	4458	4391
	3%	3%	3%	3%	4%
grade 6 events	2306	2790	2118	2275	2496
	2%	2%	1%	1%	2%
grade 7 events	82950	84132	95237	89489	90722
	80%	74%	81%	78%	83%

2.2 Compared Parameters

Parameter	Planned	Actual	Parameter	Planned	Actual
Instrument	ACIS	ACIS	Obspar format version number	7	7
Detector	ACIS-01236	ACIS-01236	Obspar file type	PREDICTED	ACTUAL
Grating	NONE	NONE	Obspar update status	NONE	UPDATED
Data mode	VFAINT	VFAINT	Number of optional ACIS chips dropped	0	0
Observation mode	POINTING	POINTING	On-chip summing requested	N	N
[deg] Pointing RA	17.455530	17.4948072545736	Subarray requested	NONE	NONE
[deg] Pointing Dec	-45.937644	-45.93938595412245	Alternating exposures requested	N	N
[deg] Pointing Roll	325.892385	326.1292824167691	[s] Primary exposure time	0.000000	3.1
[mm] SIM focus pos	-0.782348	-0.7809083437167272			
[mm] SIM defocus	0	0.001439871863259334			
[mm] SIM translation stage pos	-238.592463	-238.5959505415362			
[mm] SIM translation stage offset	5	5.003497538606524			
[s] Observation start time (MET)	185410622.184000	185409619.654			
Observation start date	2003-11-16T22:55:58	2003-11-16T22:40:19			
[s] Observation end time (MET)	185435622.184000	185436131.79265			
Observation end date	2003-11-17T05:52:38	2003-11-17T06:02:11			
Read mode	TIMED	TIMED			

2.3 Aspect



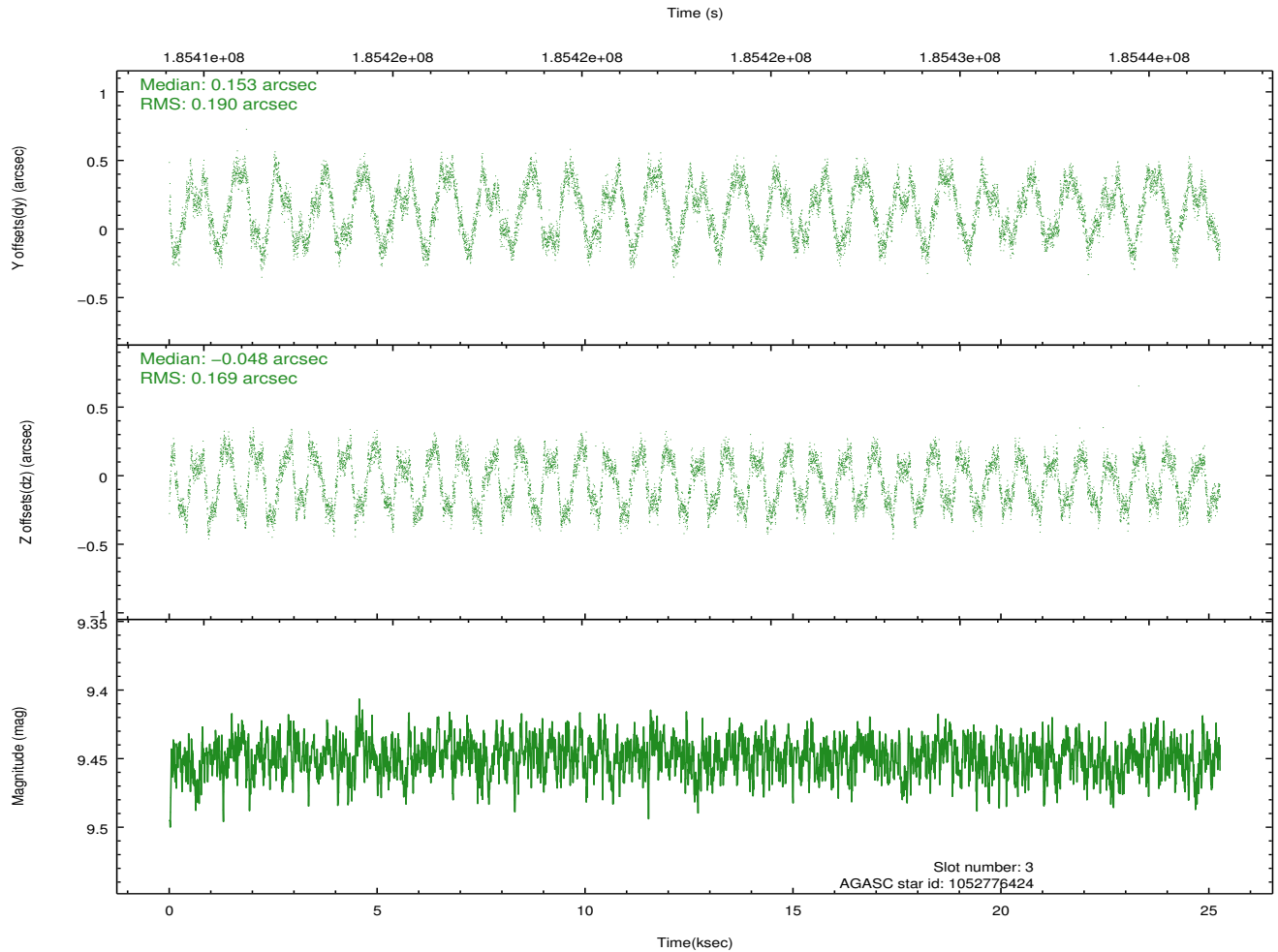
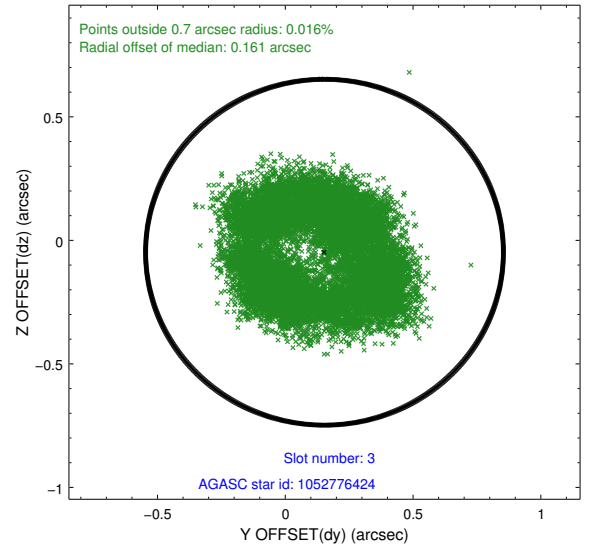
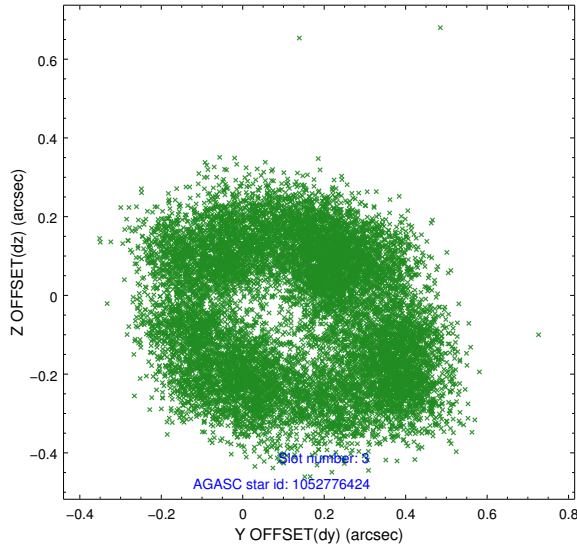


Slot Statistics

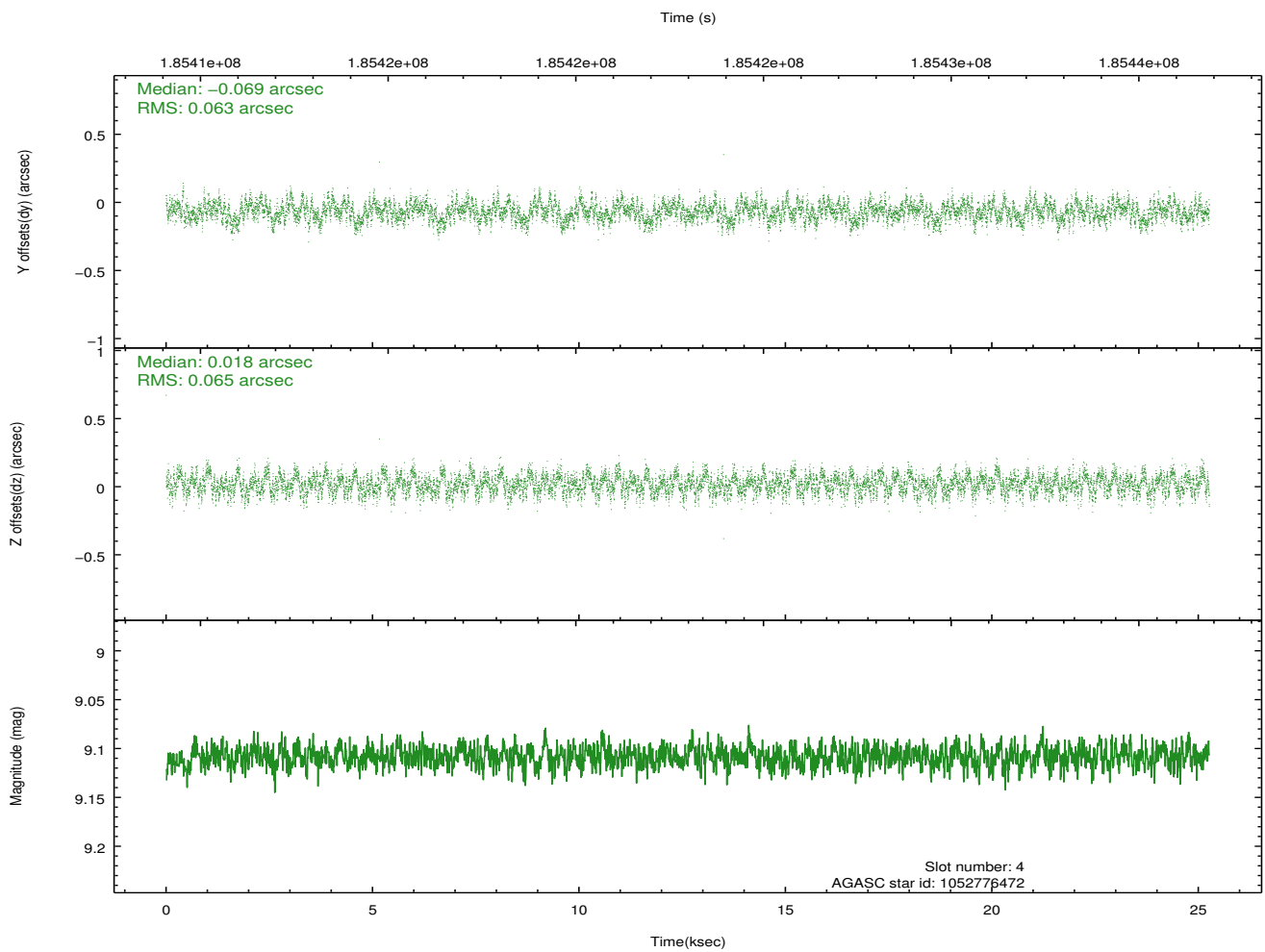
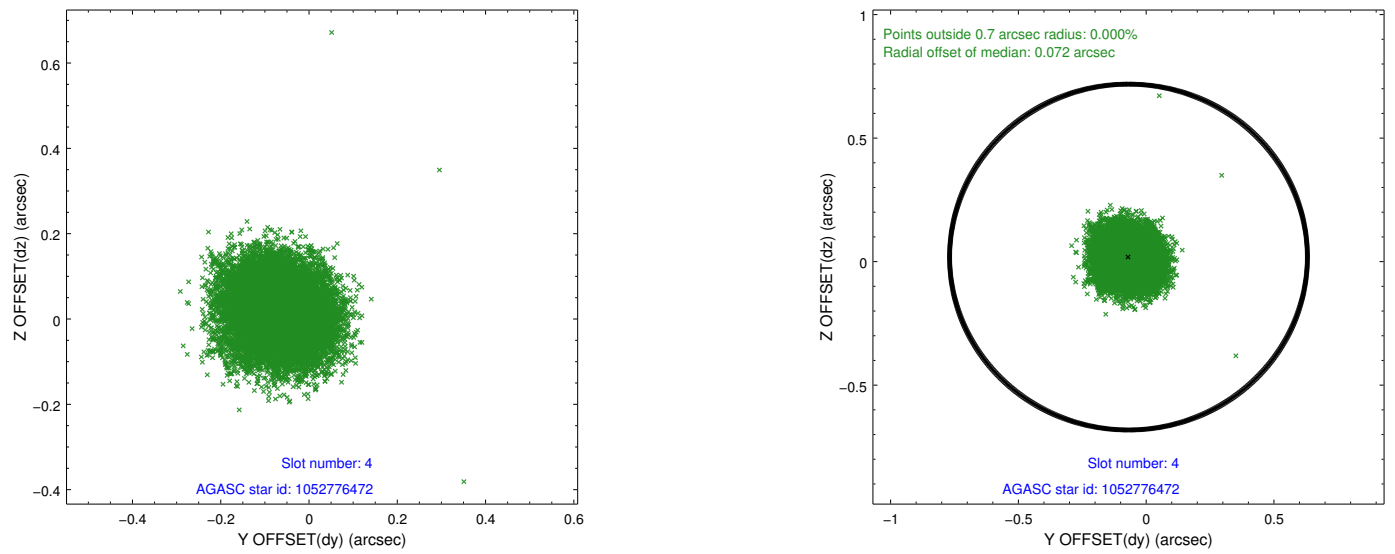
slot	status	id	mag	n_pts	med_dy	med_dz	dr1	dr2	ra	dec	mean_y	mean_z
0	FID	ACIS-I-1	7.26	6163	-0.029	0.041	0.007	0.013	0.000000	0.000000	933.13	-729.15
1	FID	ACIS-I-5	7.24	6163	-0.123	0.004	0.006	0.011	0.000000	0.000000	-1815.00	1168.28
2	FID	ACIS-I-6	7.25	6163	0.060	0.025	0.007	0.012	0.000000	0.000000	398.66	1812.91
3	GUIDE	1052776424	9.45	12324	0.153	-0.048	0.280	0.374	17.993210	-46.428047	2097.56	-717.40
4	GUIDE	1052776472	9.11	12324	-0.069	0.018	0.098	0.151	18.193201	-45.649976	961.32	1891.39
5	GUIDE	1052776568	9.12	12321	0.195	0.093	0.132	0.197	18.680703	-45.803836	2289.27	2104.02
6	GUIDE	1052777408	8.29	12326	-0.145	-0.147	0.092	0.136	16.648061	-45.918404	-1707.28	-1085.26
7	GUIDE	1052778536	9.67	12318	-0.121	0.071	0.126	0.213	16.974711	-45.313822	-2265.27	1173.91

2.4 Star Slots

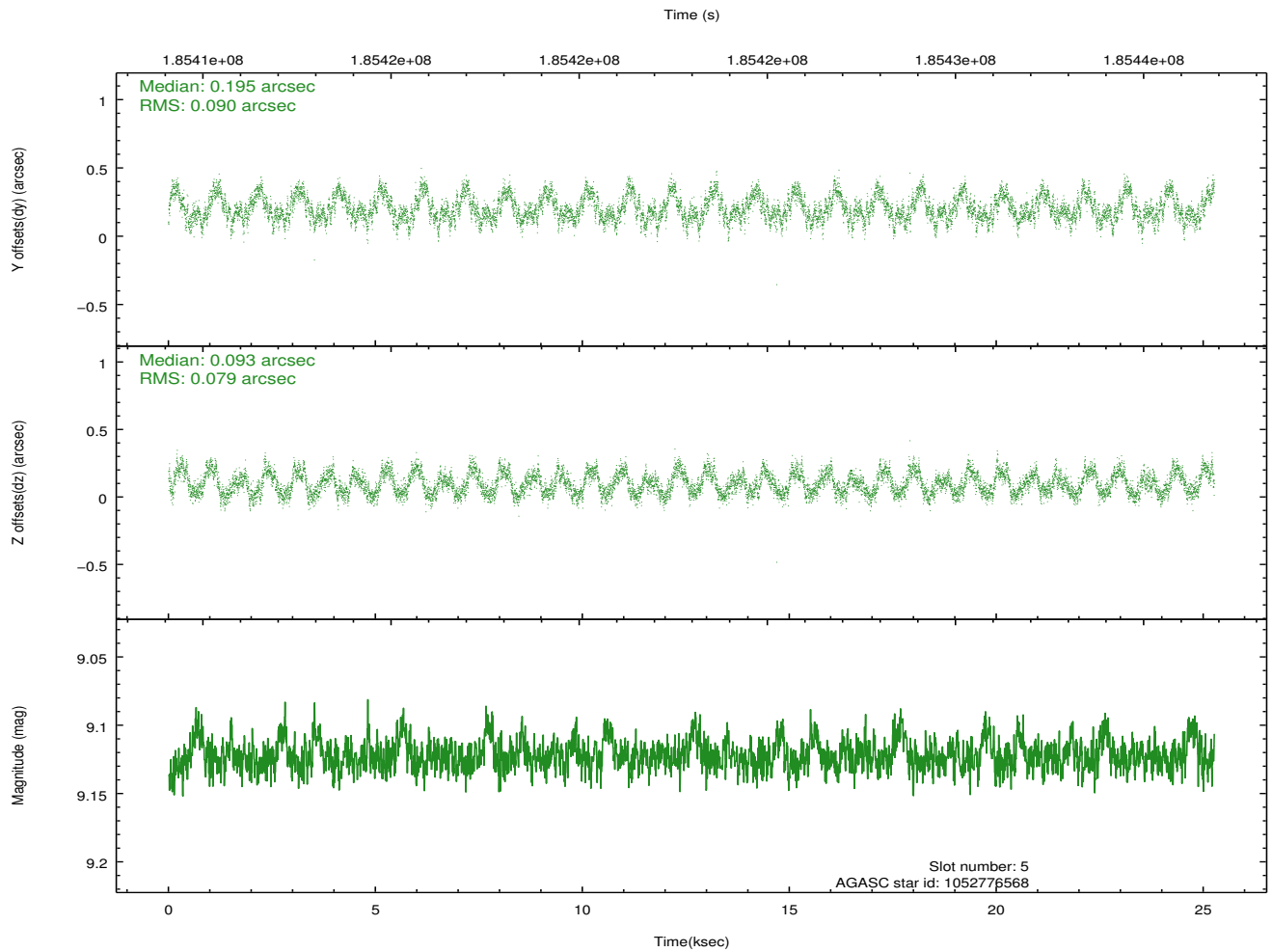
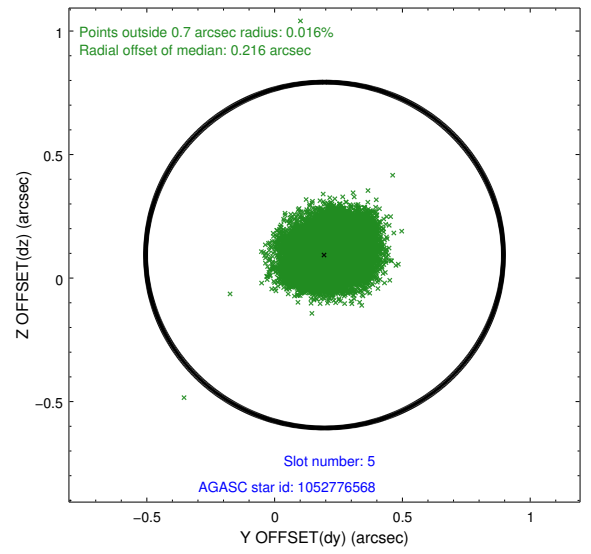
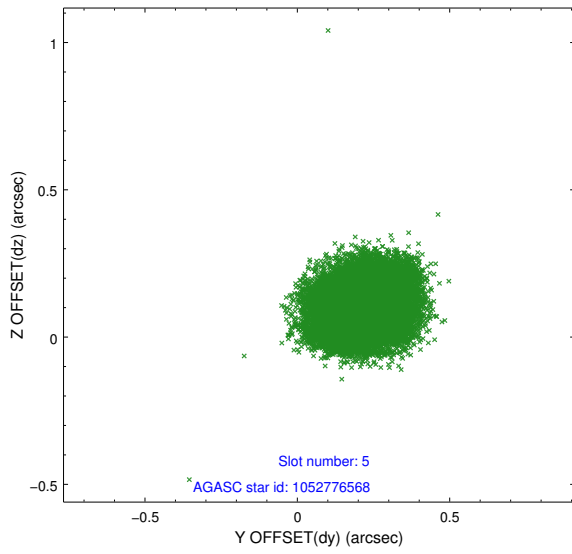
2.4.1 Slot 3



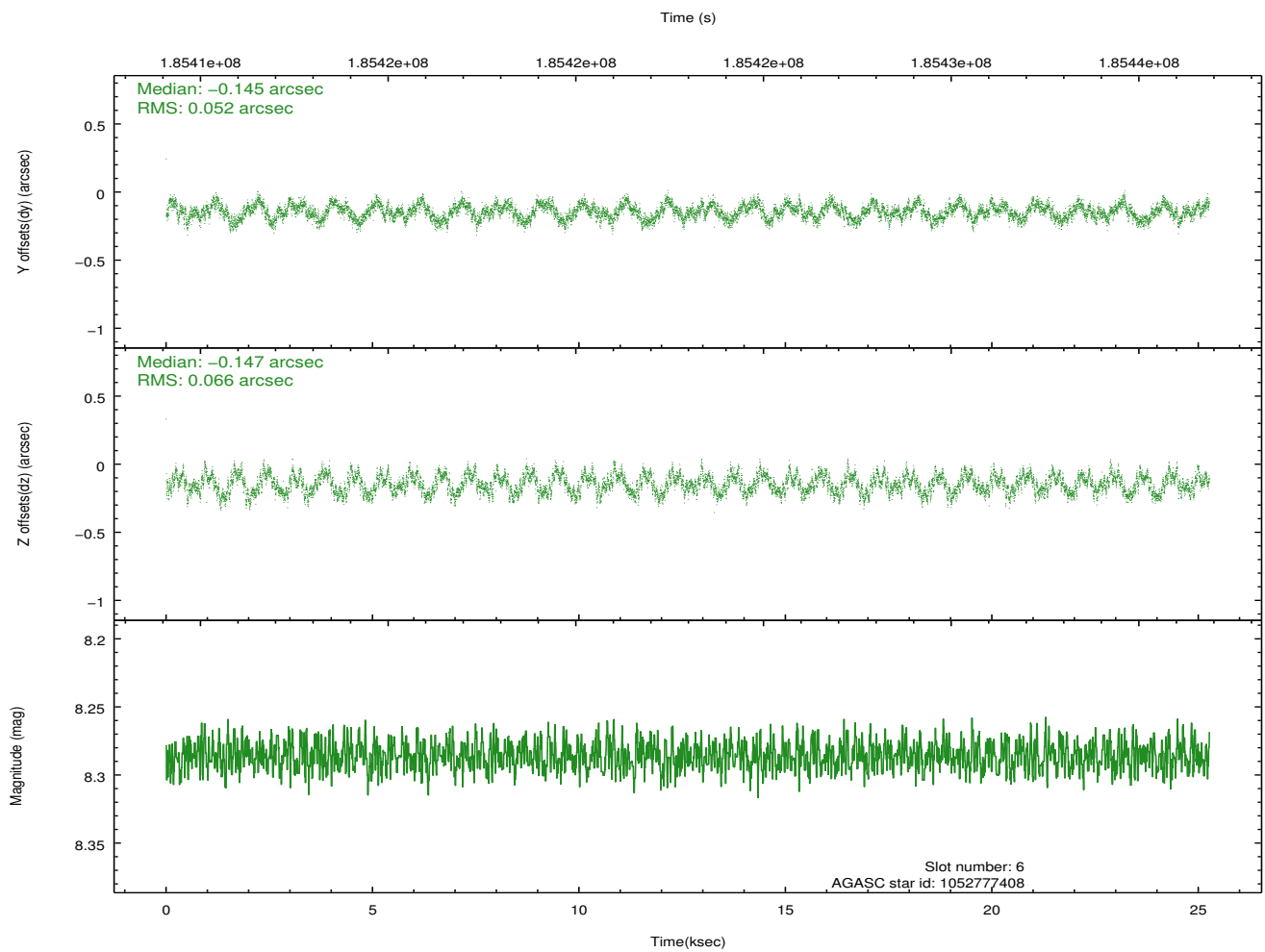
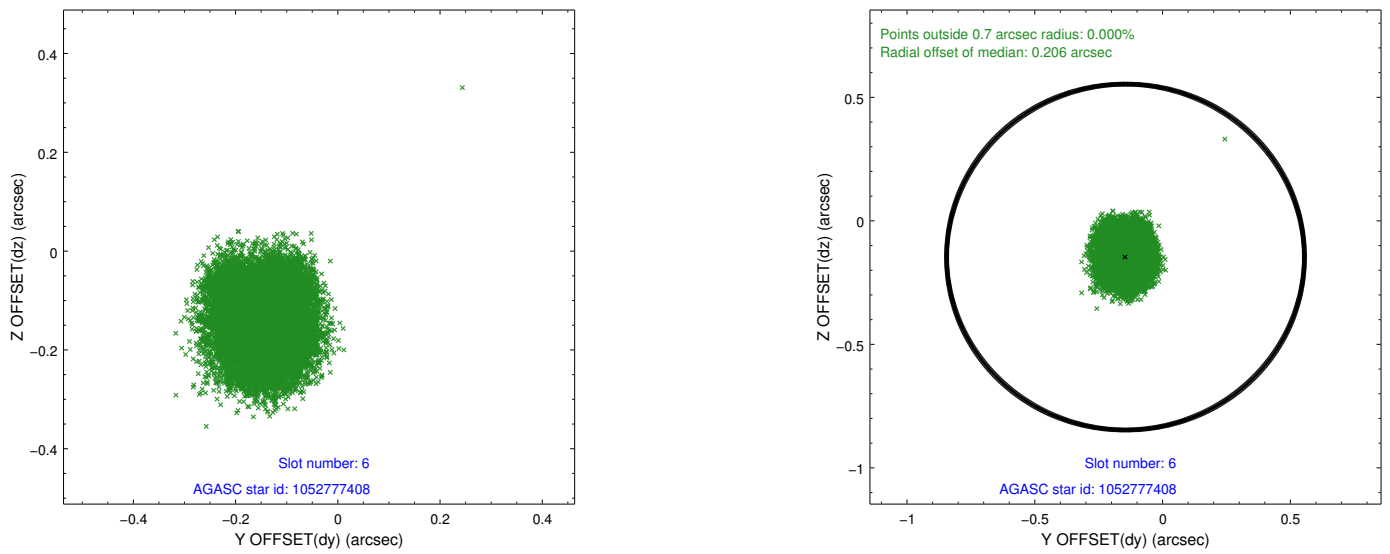
2.4.2 Slot 4



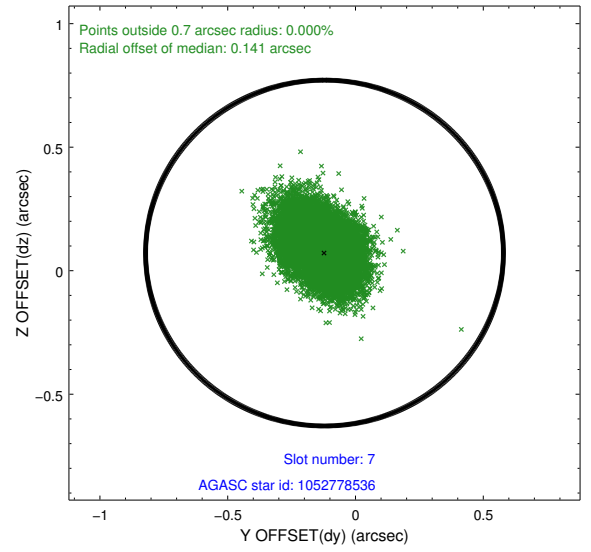
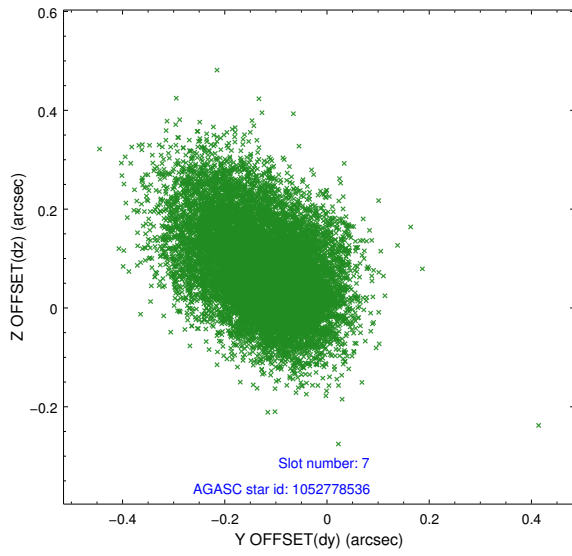
2.4.3 Slot 5



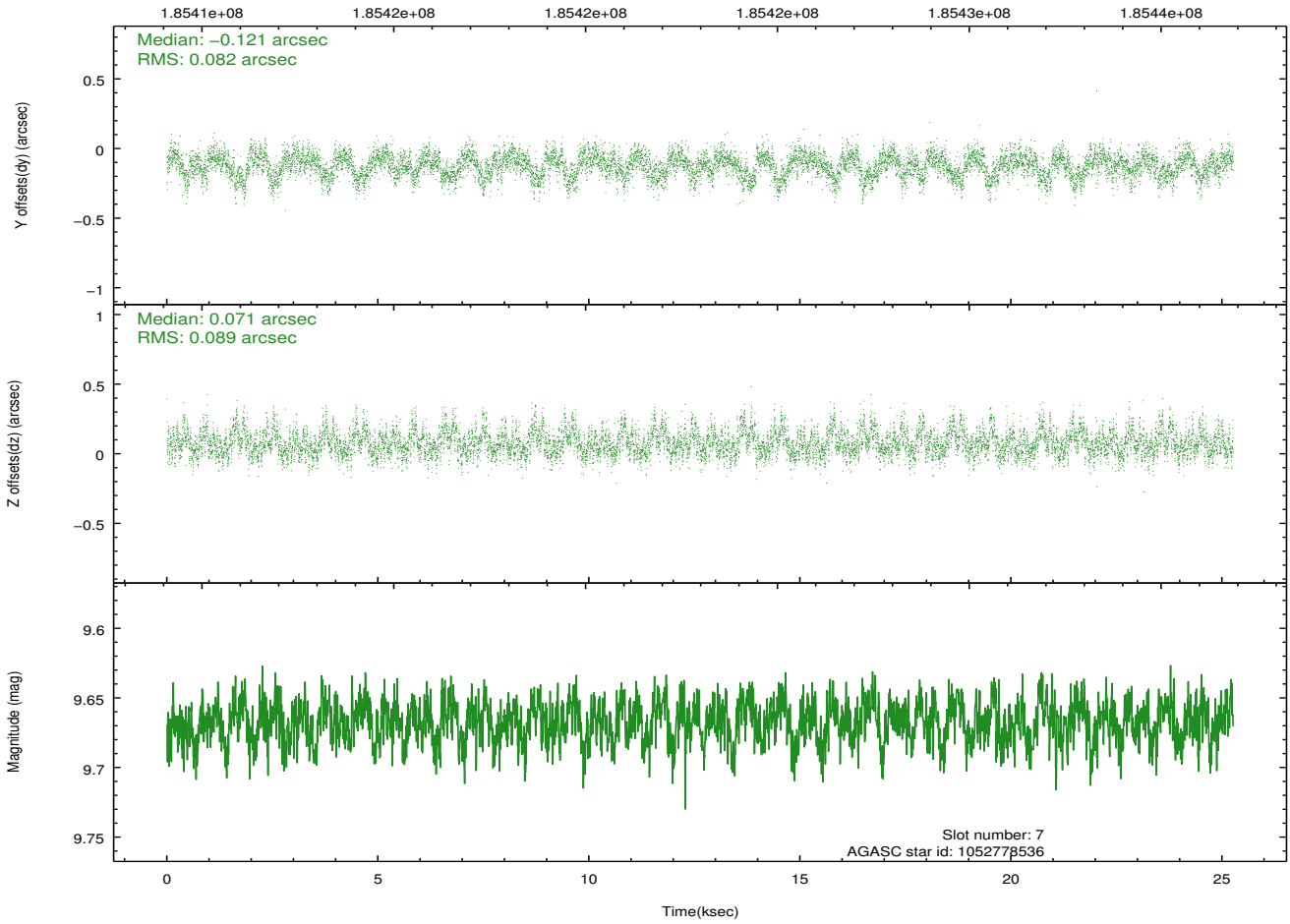
2.4.4 Slot 6



2.4.5 Slot 7

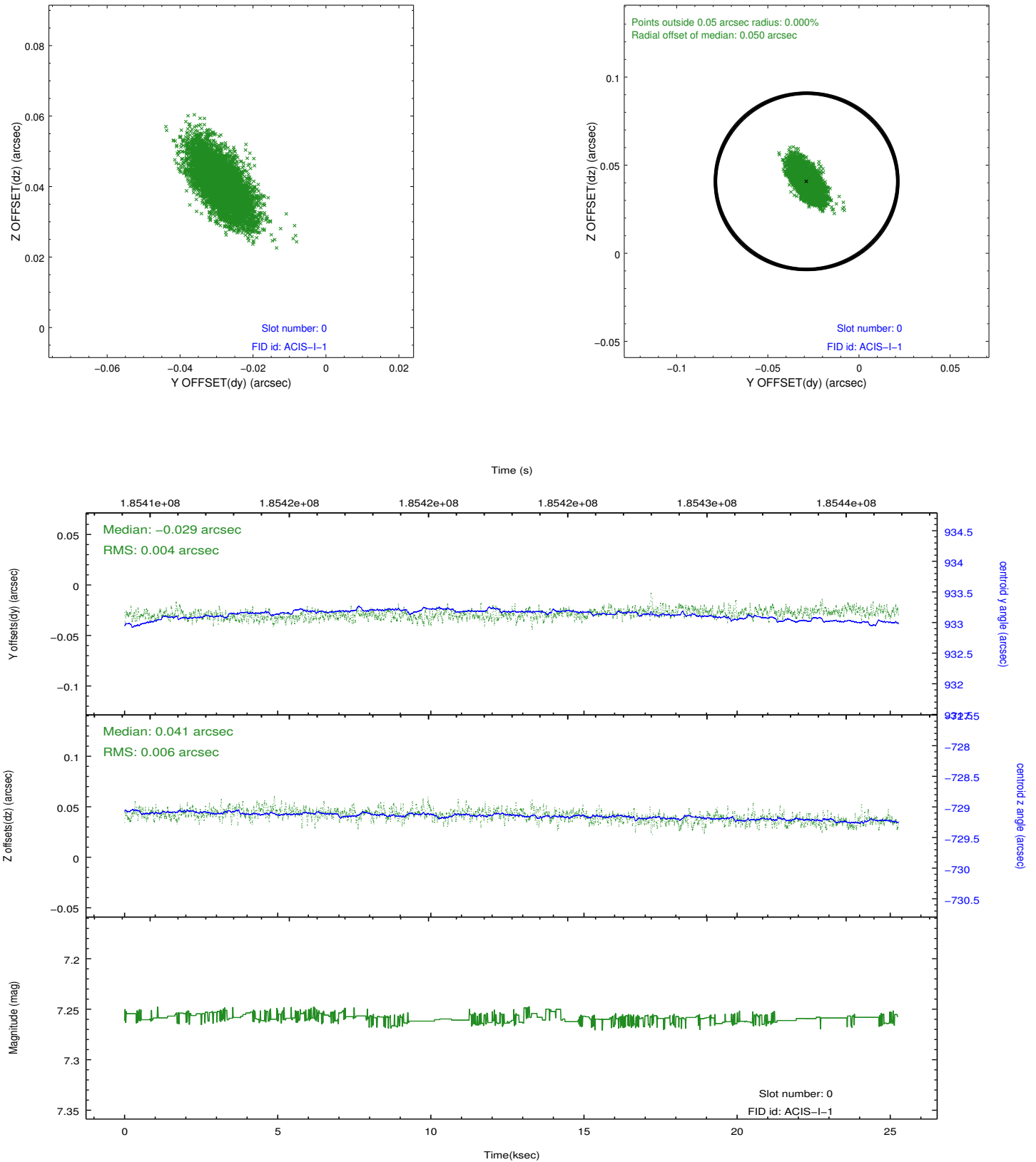


Time (s)

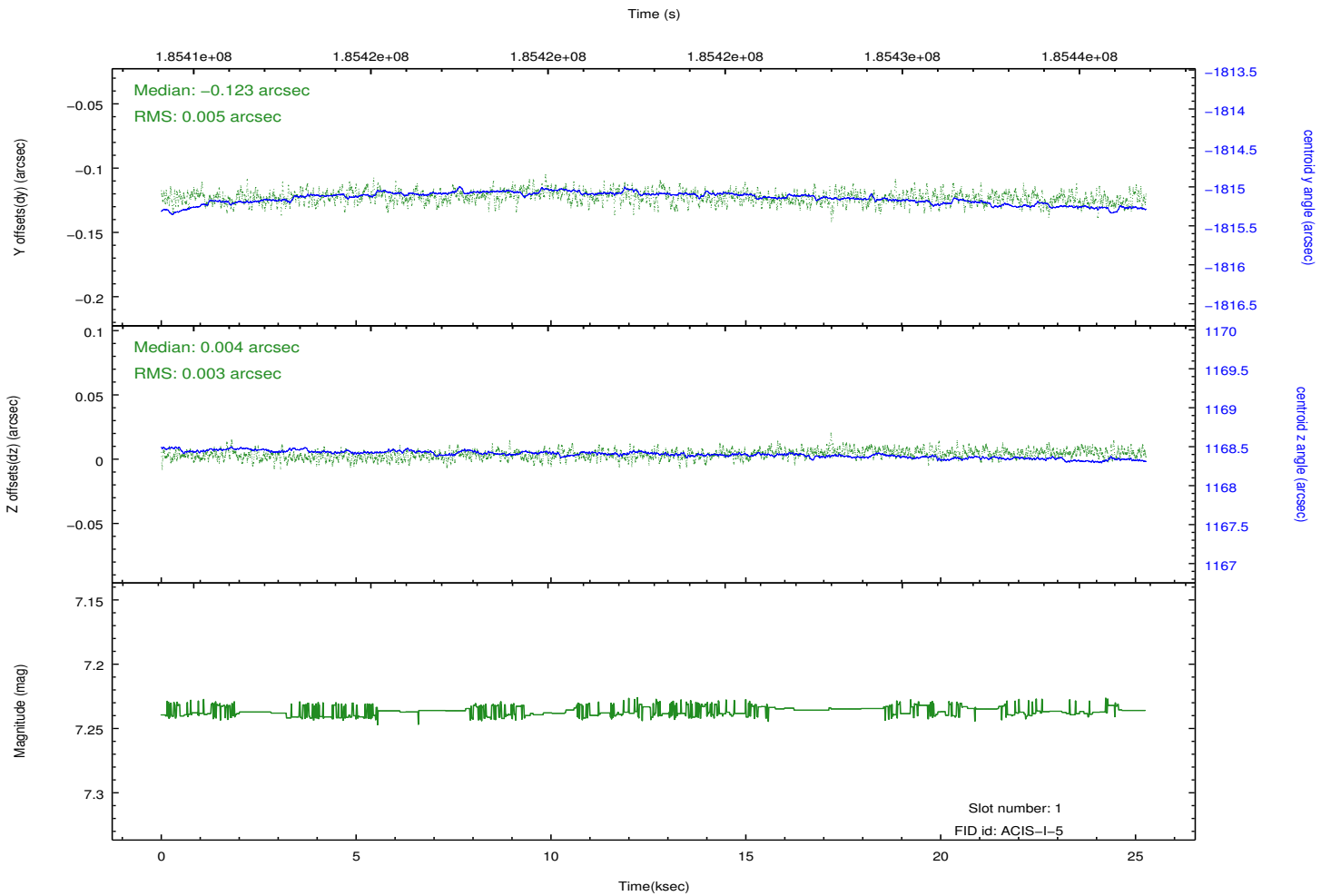
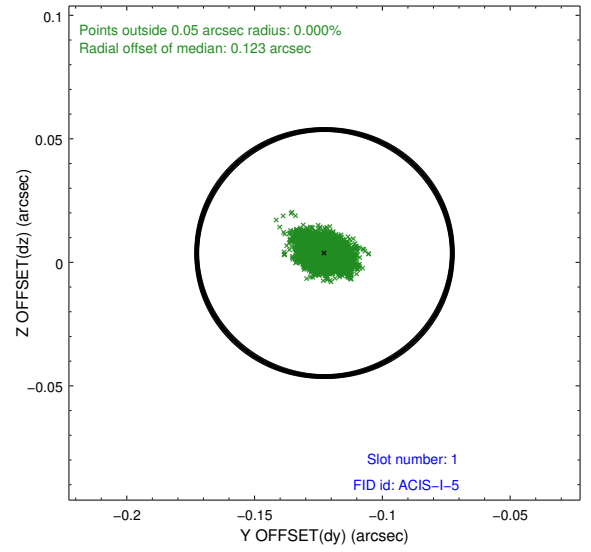
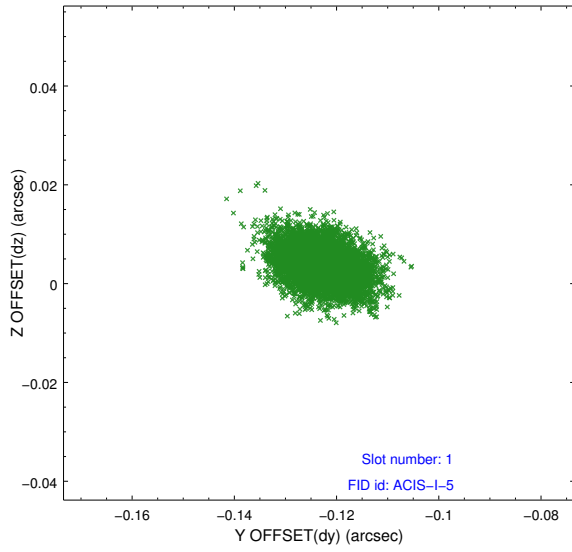


2.5 FID Slots

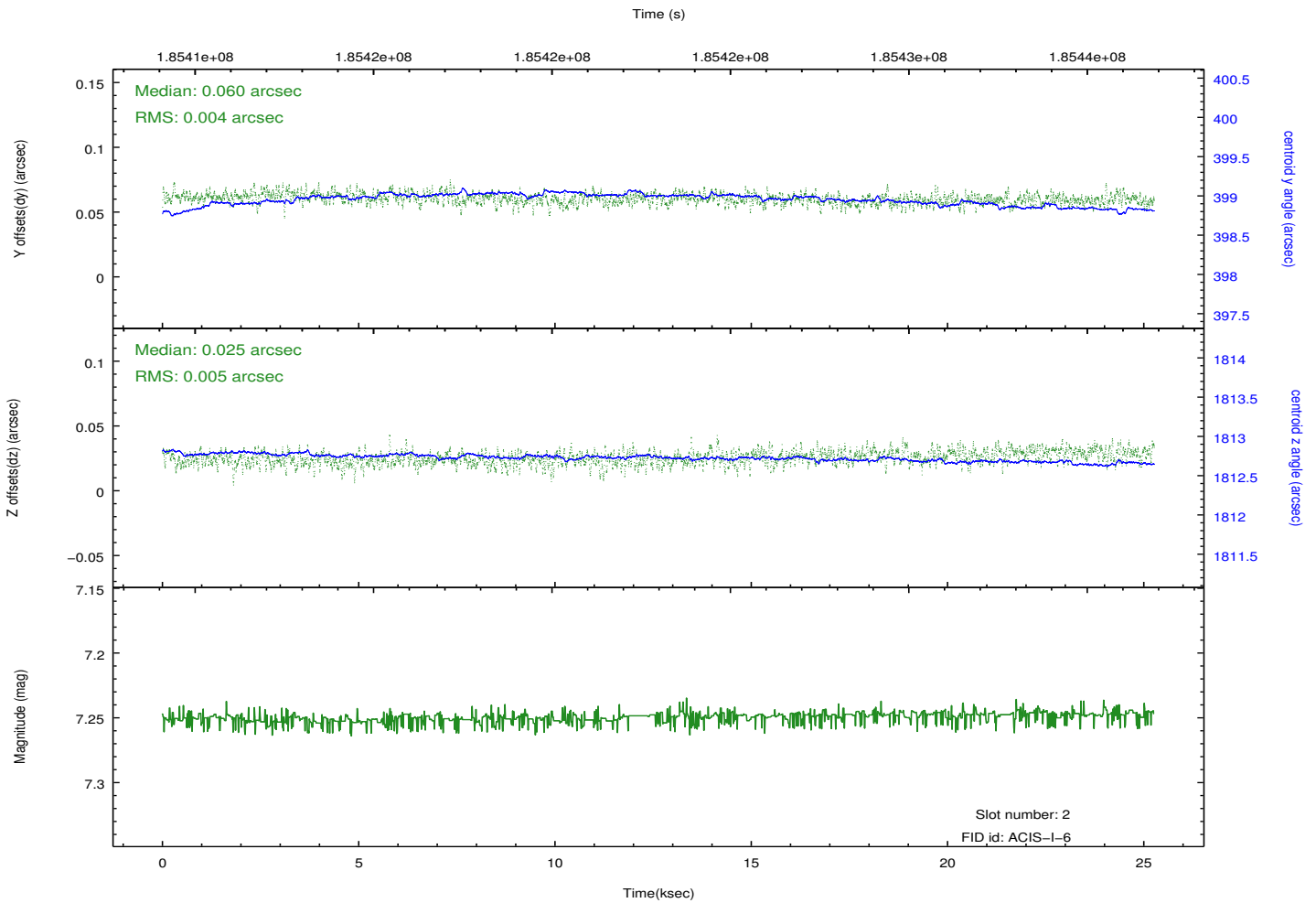
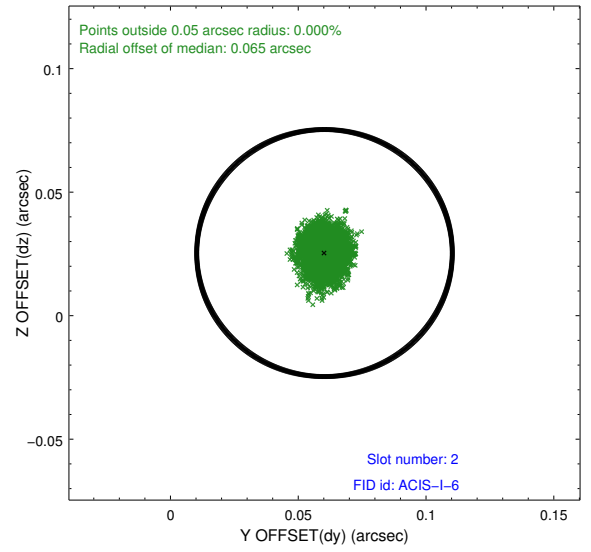
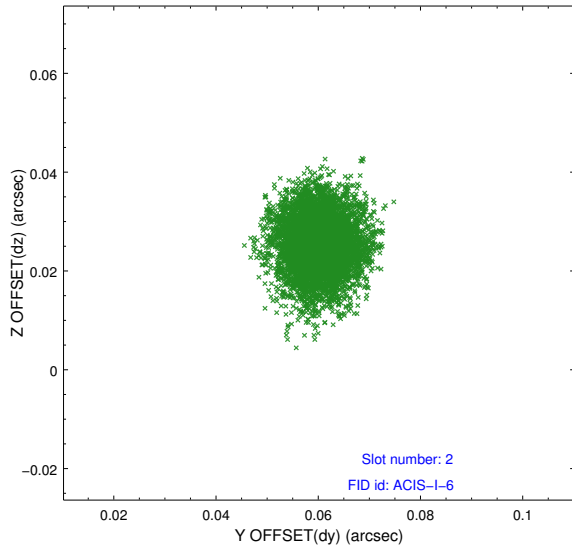
2.5.1 Slot 0



2.5.2 Slot 1



2.5.3 Slot 2



A Summary

A.1 Status

V&V Scientist	Jen Lauer
V&V Date (YYYY-MM-DD)	2012.12.02
V&V Edition	1
V&V Disposition and Status	OK
V&V Charge Time	25.122

A.2 Comments