

V&V Reference Report

L2 ASCDS Version : 8.5

Observation 5031 - L2 Version 3
Chandra X-Ray Center

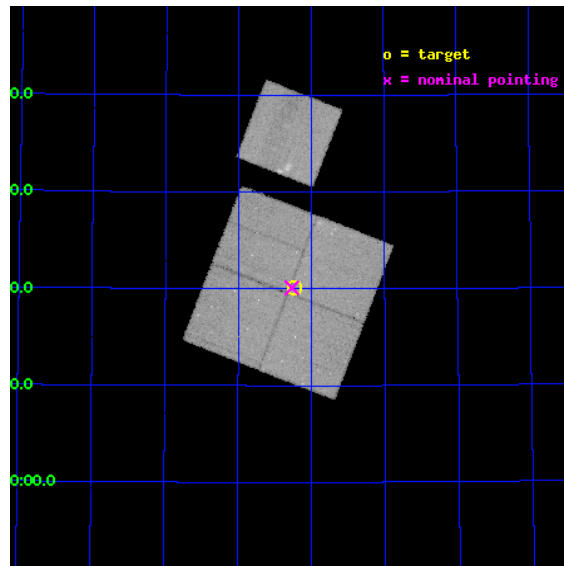
L2 Processing Date : Dec 9 2012

Contents

1	Front	2
2	OBI	3
2.1	OBI	3
2.1.1	Images	3
2.1.2	Bias	3
2.1.3	Parameters	4
2.1.4	Events	4
2.2	Compared Parameters	5
2.3	Aspect	6
2.4	Star Slots	9
2.4.1	Slot 3	9
2.4.2	Slot 4	10
2.4.3	Slot 5	11
2.4.4	Slot 6	12
2.4.5	Slot 7	13
2.5	FID Slots	14
2.5.1	Slot 0	14
2.5.2	Slot 1	15
2.5.3	Slot 2	16
A	Summary	17
A.1	Status	17
A.2	Comments	17

1 Front

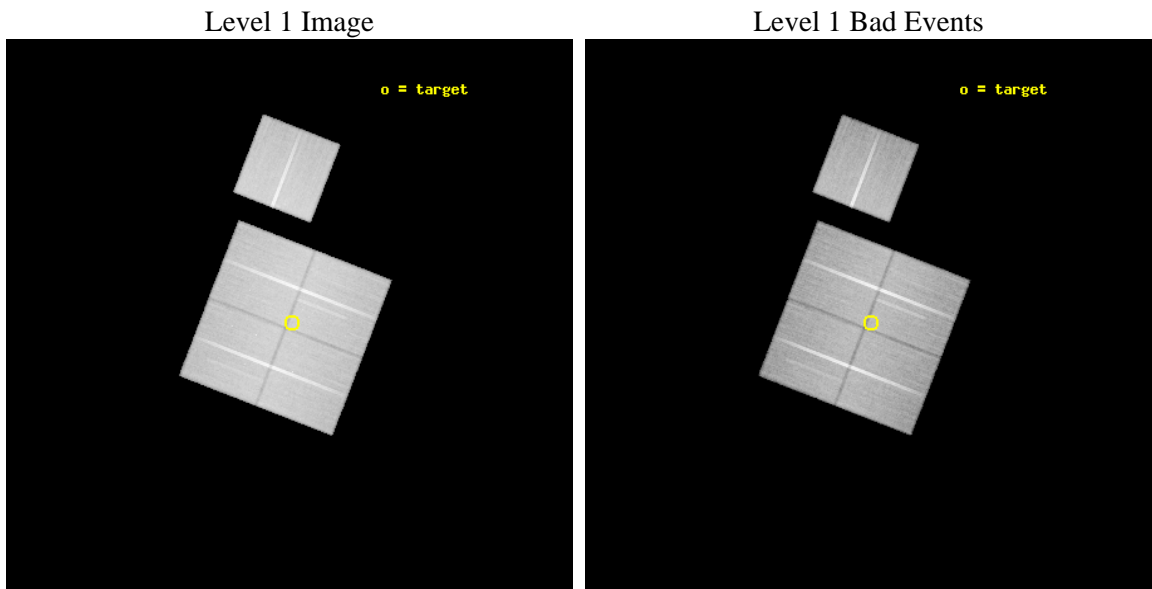
seq_num	900338	Sequence number
obs_id	5031	Observation id
title	The Balance of Power between Starbursts and AGN: a Chandra/SIRTf Survey.	Proposal title
observer	Dr. Belinda Wilkes	Principal investigator
object	SWIRE LOCKMAN 9	Source name
dtycycle	0	
cycle	P	events from which exps? Prim/Second/Both
ra_targ	161.807708	Observer's specified target RA [deg]
dec_targ	59.335263	Observer's specified target Dec [deg]
ra_nom	161.81683607093	Nominal RA [deg]
dec_nom	59.335131166466	Nominal Dec [deg]
roll_nom	21.200831935755	Nominal Roll [deg]
revision	3	Processing version of data
ontime	66259.23600167	Sum of GTIs [s]
livetime	65393.510303969	Livetime [s]
ontime0	66259.235961795	Sum of GTIs [s]
ontime1	66259.236071378	Sum of GTIs [s]
ontime2	66262.376971811	Sum of GTIs [s]
ontime3	66259.23600167	Sum of GTIs [s]
ontime6	66259.236001611	Sum of GTIs [s]
l2events	257907	Number of level 2 events



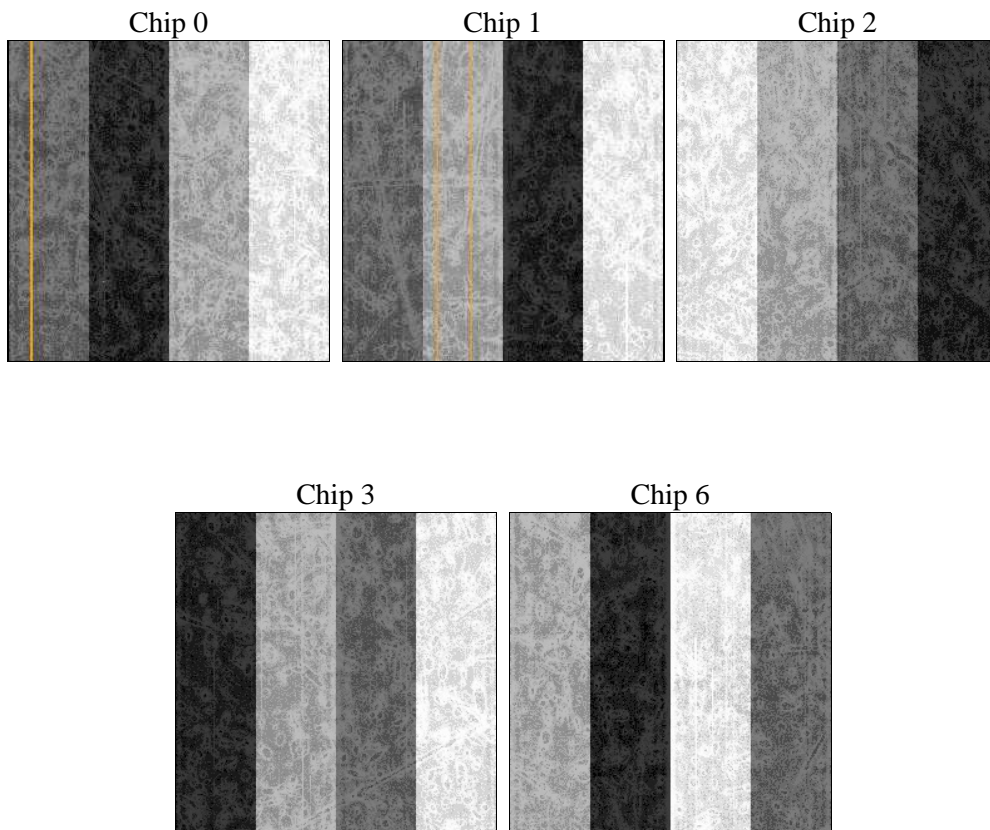
2 OBI

2.1 OBI

2.1.1 Images



2.1.2 Bias



2.1.3 Parameters

obi_num	1	Obi number	sched_exp_time	66500.000000	[s] Scheduled observation exposure time
ascdsver	8.5	Processing system revision	ontime	66259.23600167	Sum of GTIs [s]
caldbver	4.5.4	 	ontime0	66259.235961795	Sum of GTIs [s]
date	2012-12-09T10:02:30	Date and time of file creation	ontime1	66259.236071378	Sum of GTIs [s]
revision	3	Processing version of data	ontime2	66262.376971811	Sum of GTIs [s]
			ontime3	66259.23600167	Sum of GTIs [s]
			ontime6	66259.236001611	Sum of GTIs [s]
			l1events	2441327	Number of level 1 events

2.1.4 Events

	ccd 0	ccd 1	ccd 2	ccd 3	ccd 6
level 1 events	470720	470934	502863	496785	500025
rejected events	410392	407802	444090	438760	440502
rejected %	87%	86%	88%	88%	88%

	ccd 0	ccd 1	ccd 2	ccd 3	ccd 6
grade 0 events	25713	24507	26125	25328	24305
	5%	5%	5%	5%	4%
grade 1 events	277	241	319	303	266
	0%	0%	0%	0%	0%
grade 2 events	12963	13848	11996	11003	12059
	2%	2%	2%	2%	2%
grade 3 events	5860	6218	5500	5782	5824
	1%	1%	1%	1%	1%
grade 4 events	5472	6316	5602	5659	5698
	1%	1%	1%	1%	1%
grade 5 events	20442	21109	19428	22324	22605
	4%	4%	3%	4%	4%
grade 6 events	10329	12246	9556	10261	11641
	2%	2%	1%	2%	2%
grade 7 events	389664	386449	424337	416125	417627
	82%	82%	84%	83%	83%

2.2 Compared Parameters

Parameter	Planned	Actual	Parameter	Planned	Actual
Instrument	ACIS	ACIS	Obspar format version number	7	7
Detector	ACIS-01236	ACIS-01236	Obspar file type	PREDICTED	ACTUAL
Grating	NONE	NONE	Obspar update status	NONE	UPDATED
Data mode	VFAINT	VFAINT	Number of optional ACIS chips dropped	0	0
Observation mode	POINTING	POINTING	On-chip summing requested	N	N
[deg] Pointing RA	161.783333	161.8168360709342	Subarray requested	NONE	NONE
[deg] Pointing Dec	59.313706	59.33513116646591	Alternating exposures requested	N	N
[deg] Pointing Roll	21.020960	21.20083193575537	[s] Primary exposure time	0.000000	3.1
[deg] Roll angle	19.200000	19.200000			
[deg] Roll tolerance	1.800000	1.800000			
Roll constraint allows 180D rotation	Y	Y			
[mm] SIM focus pos	-0.782348	-0.7809083437167272			
[mm] SIM defocus	0	0.001439871863259334			
[mm] SIM translation stage pos	-233.592463	-233.5874344608287			
[mm] SIM translation stage offset	0	-0.005018542100998502			
[s] Observation start time (MET)	212597661.184000	212597284.60086			
Observation start date	2004-09-26T14:53:17	2004-09-26T14:48:04			
[s] Observation end time (MET)	212664161.184000	212665273.8789			
Observation end date	2004-09-27T09:21:37	2004-09-27T09:41:13			
Read mode	TIMED	TIMED			

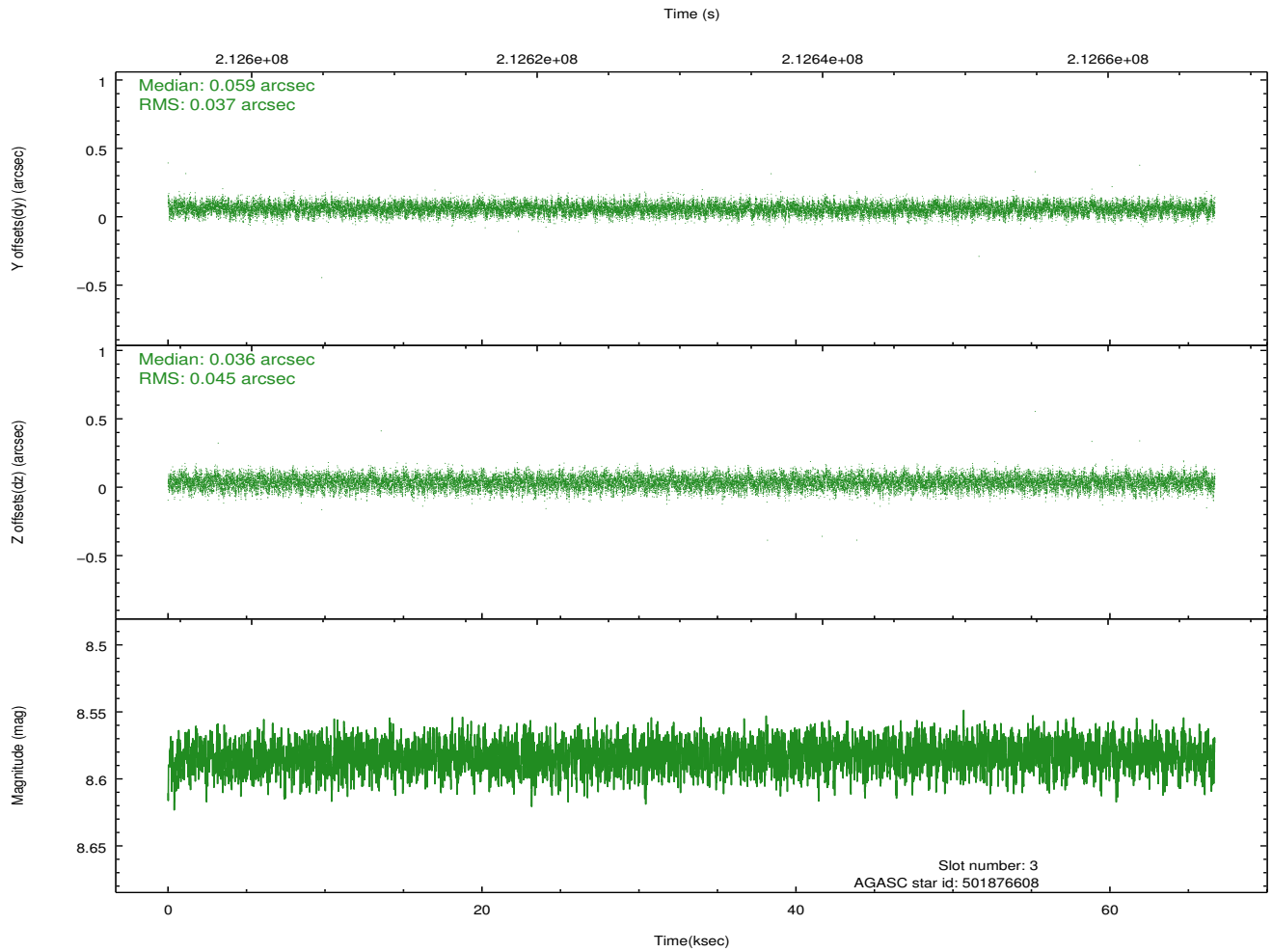
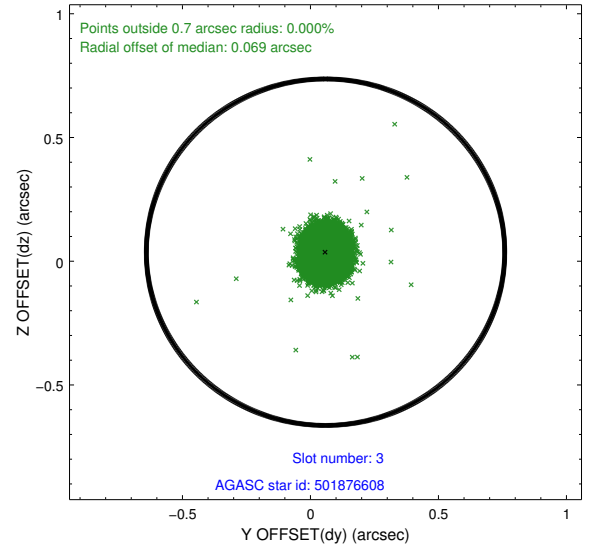
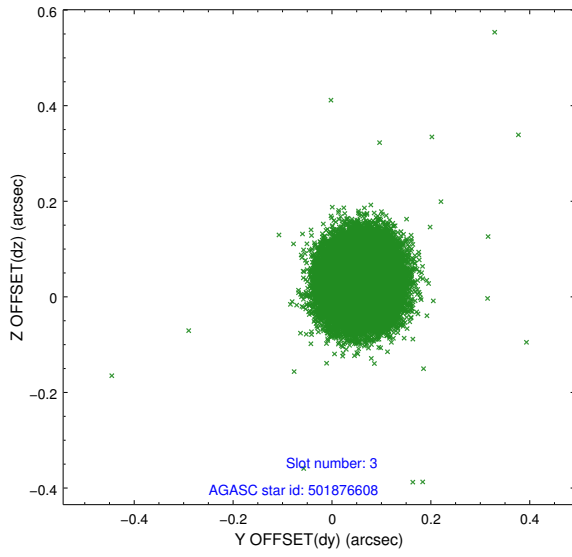
2.3 Aspect

Slot Statistics

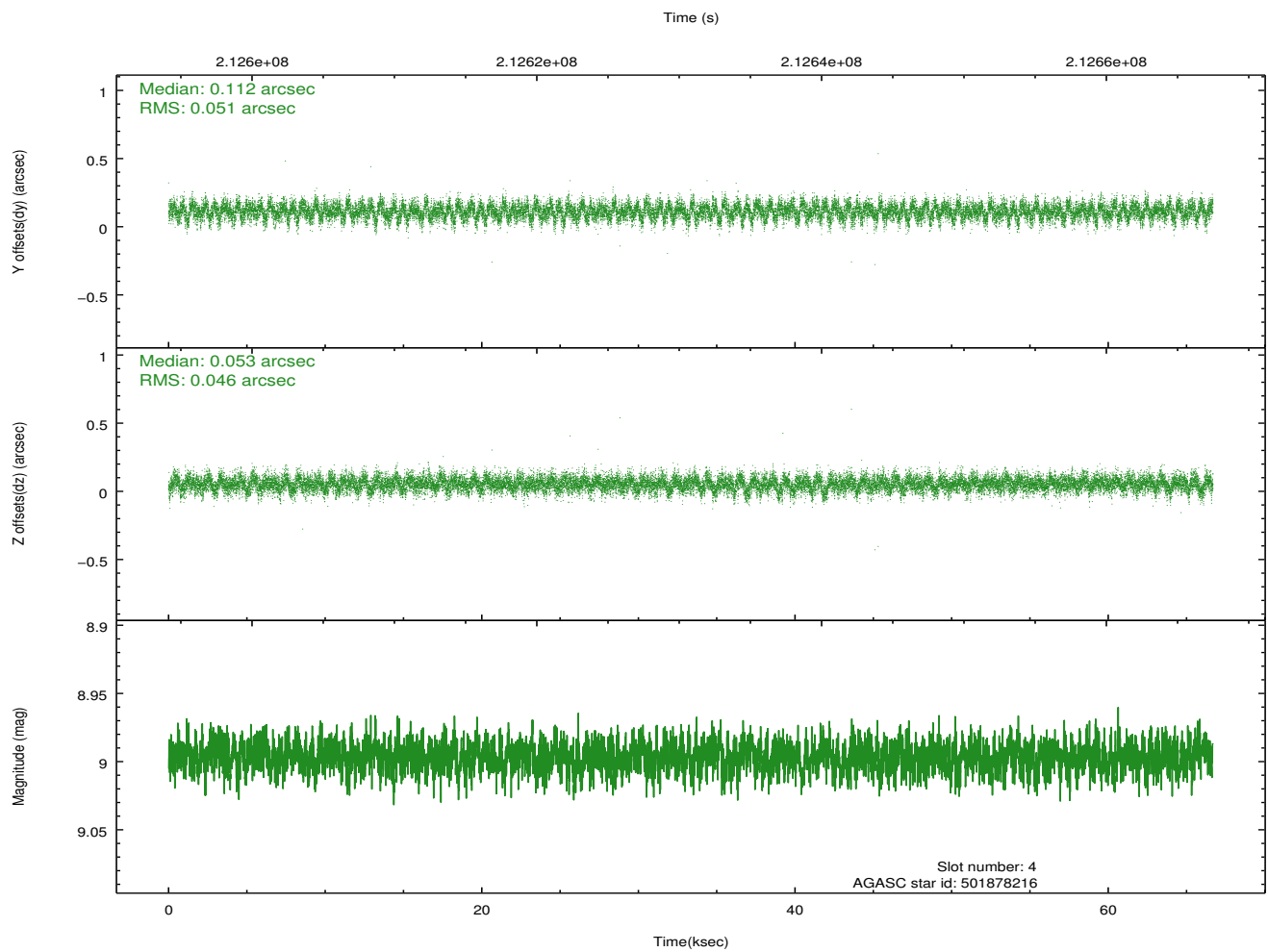
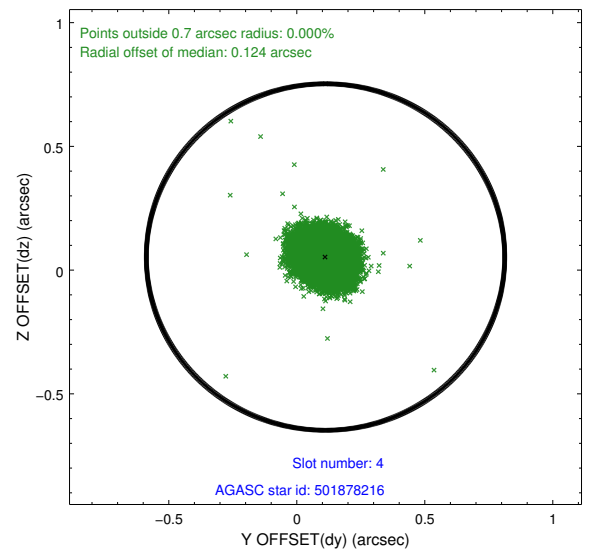
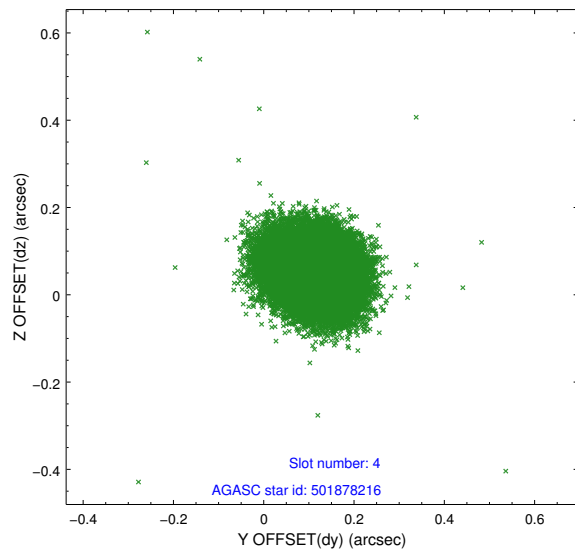
slot	status	id	mag	n_pts	med_dy	med_dz	dr1	dr2	ra	dec	mean_y	mean_z
0	FID	ACIS-I-1	7.24	16264	0.042	-0.003	0.006	0.011	0.000000	0.000000	932.01	-835.49
1	FID	ACIS-I-5	7.23	16264	-0.164	0.063	0.006	0.011	0.000000	0.000000	-1816.29	1062.16
2	FID	ACIS-I-6	7.25	16262	0.031	0.011	0.007	0.011	0.000000	0.000000	397.66	1706.50
3	GUIDE	501876608	8.58	32522	0.059	0.036	0.062	0.098	161.204341	58.717464	-1778.38	-1611.14
4	GUIDE	501878216	9.00	32514	0.112	0.053	0.073	0.117	161.663048	59.249982	-288.57	-134.50
5	GUIDE	501878576	7.86	32526	0.009	-0.003	0.053	0.084	161.532118	59.060873	-759.89	-682.05
6	GUIDE	501878640	8.44	32521	-0.091	0.037	0.084	0.135	163.346309	59.049577	2372.44	-1893.64
7	GUIDE	501880360	8.28	32524	-0.091	-0.123	0.064	0.100	161.850113	59.665463	567.75	1138.44

2.4 Star Slots

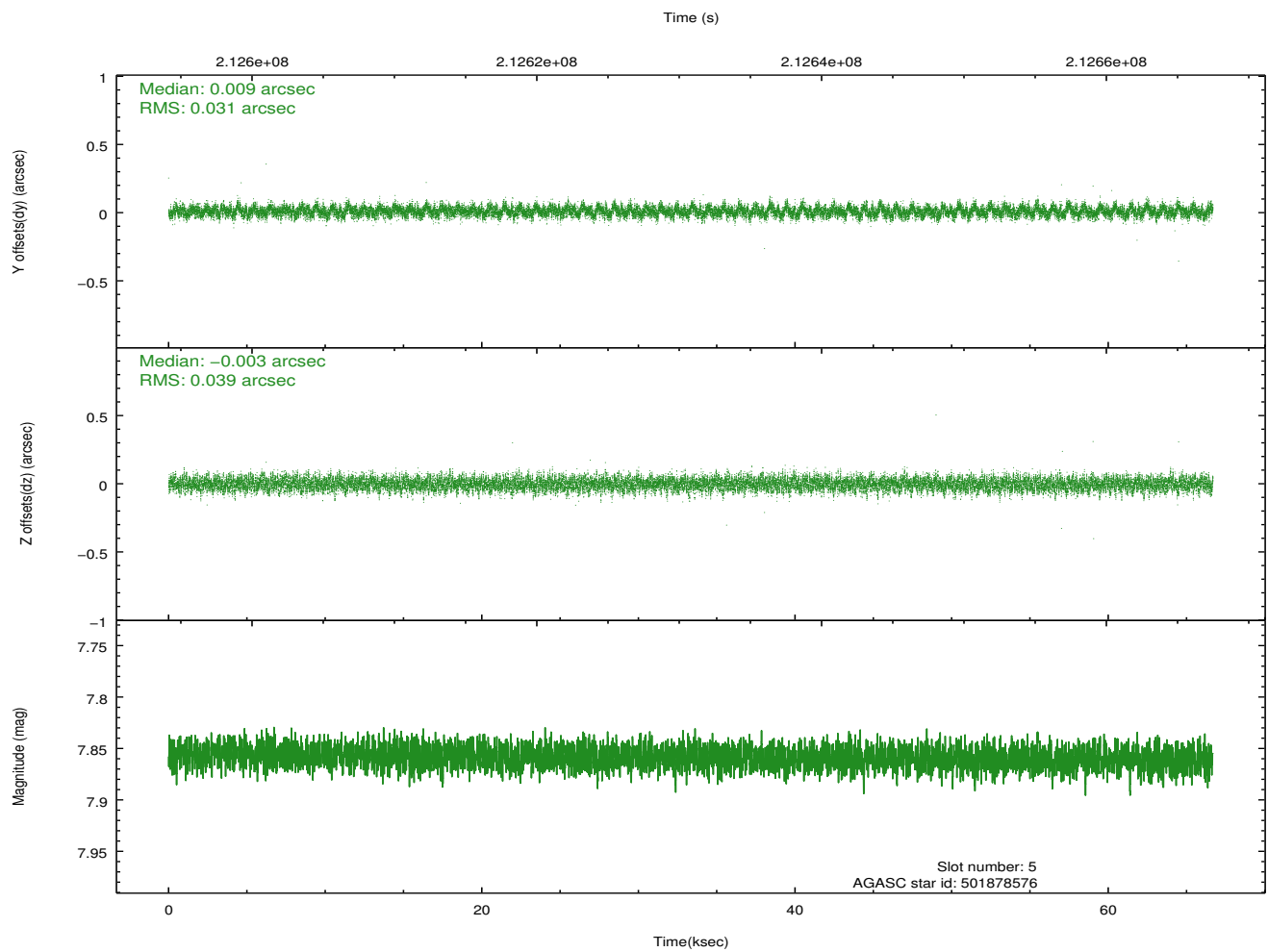
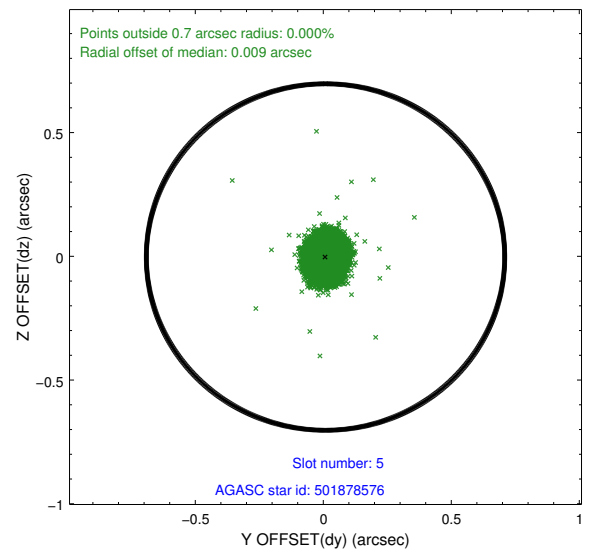
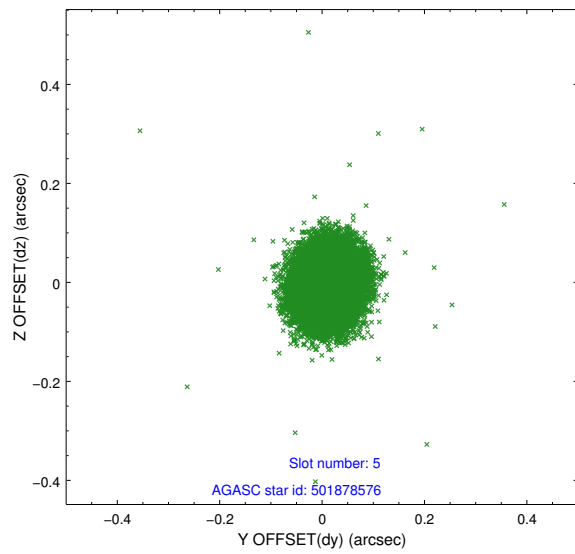
2.4.1 Slot 3



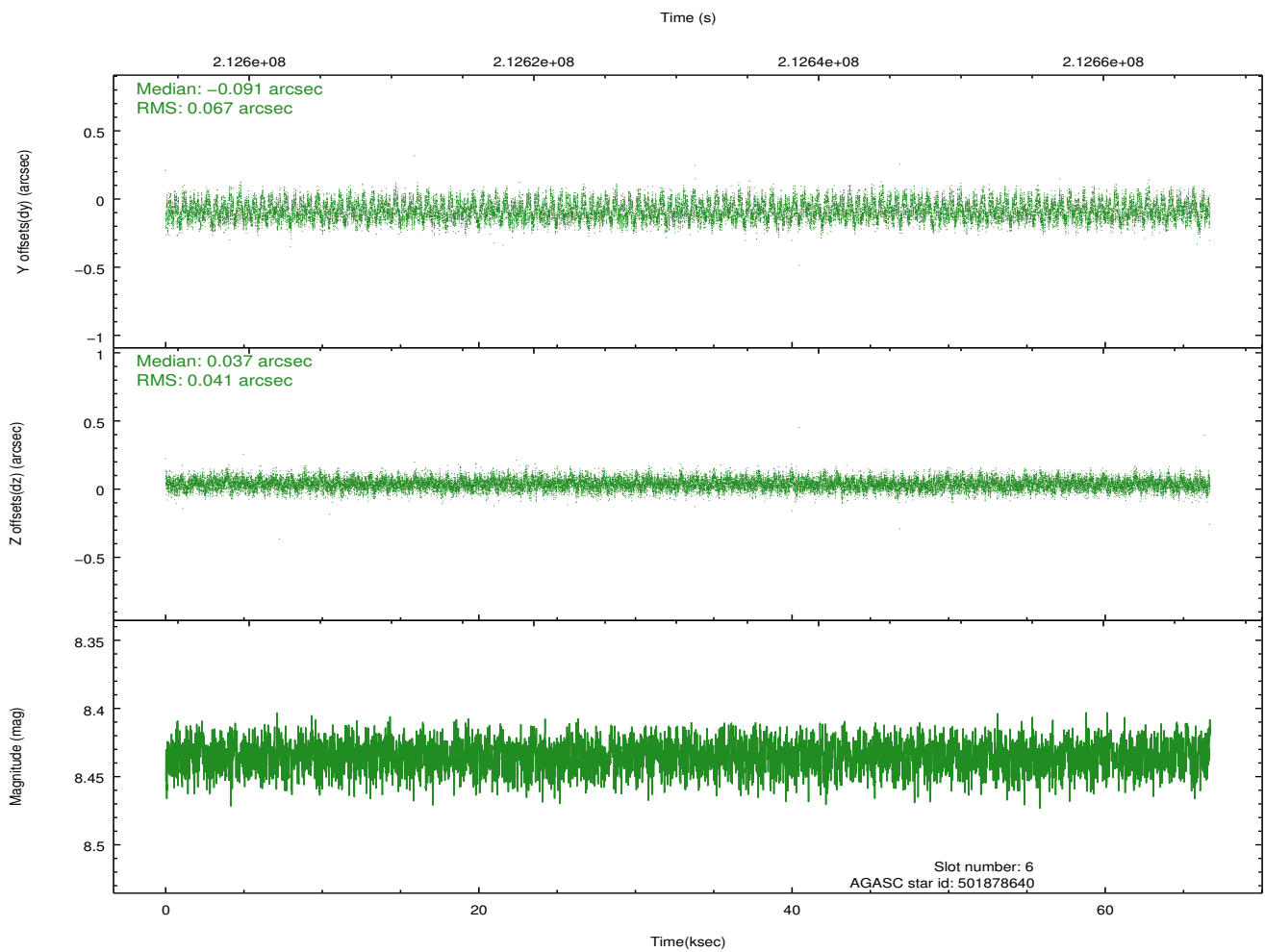
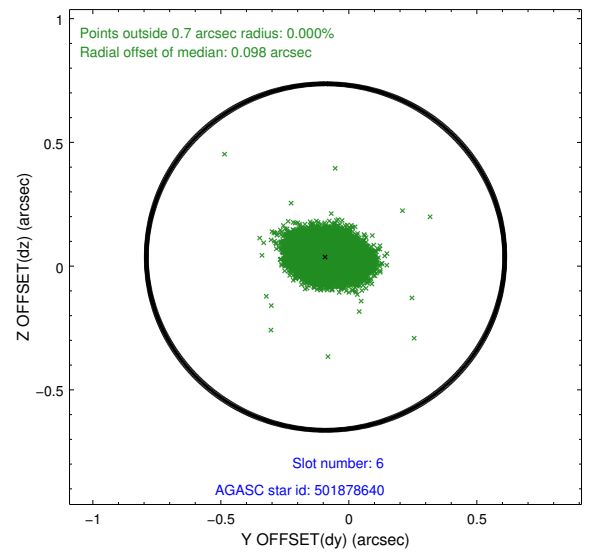
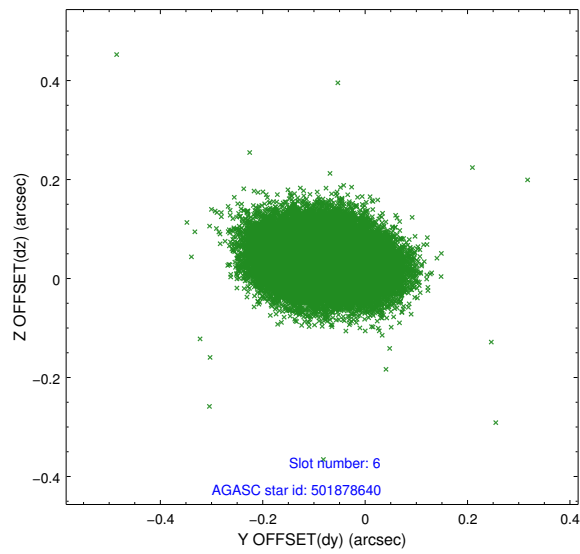
2.4.2 Slot 4



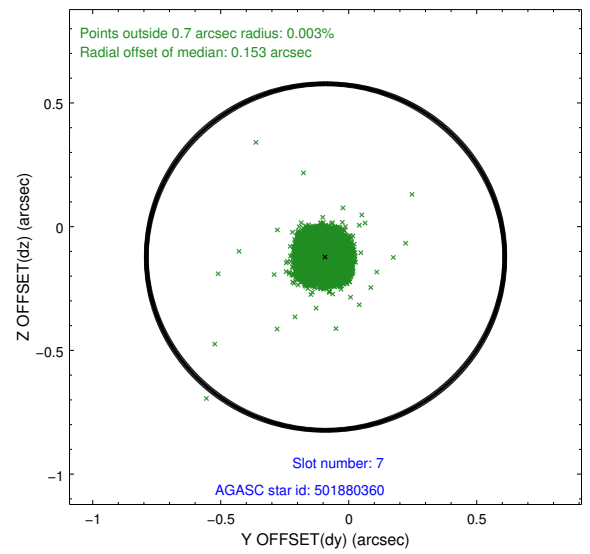
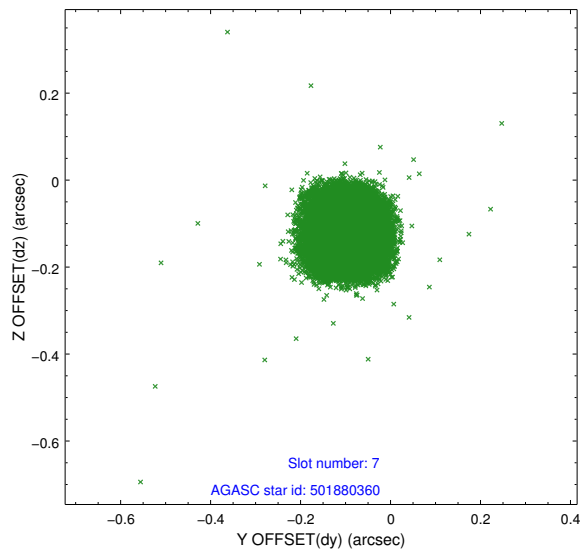
2.4.3 Slot 5



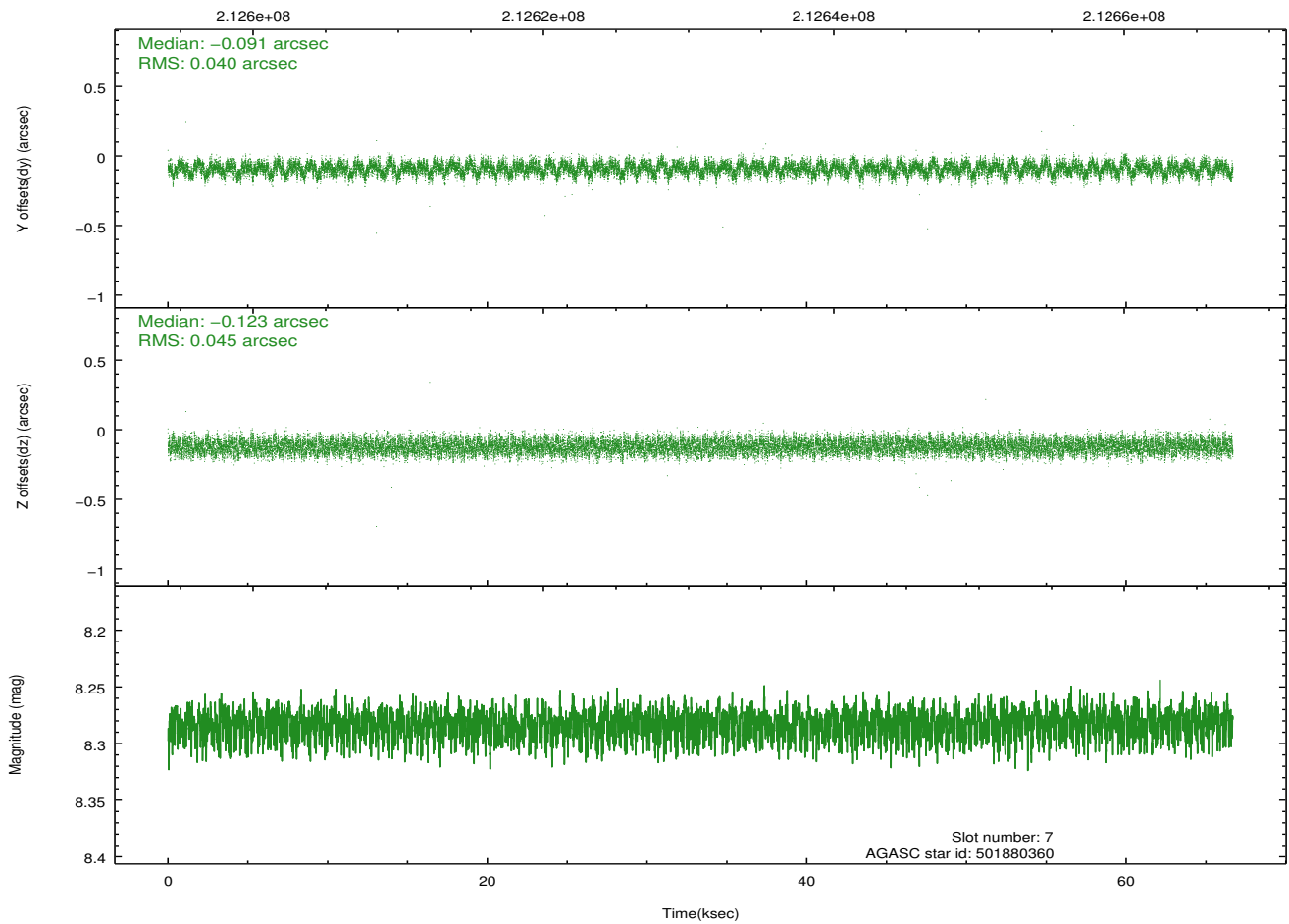
2.4.4 Slot 6



2.4.5 Slot 7

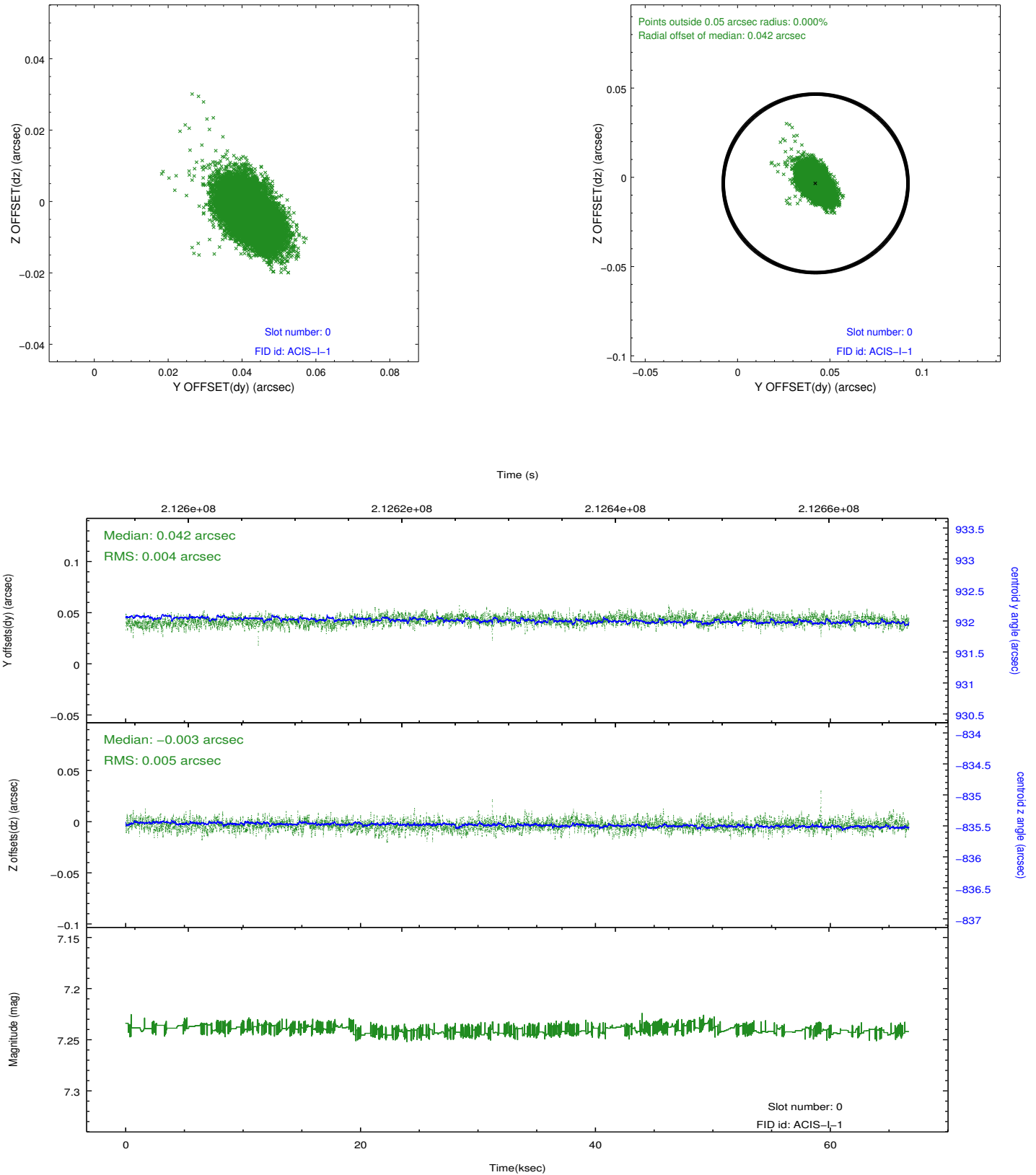


Time (s)

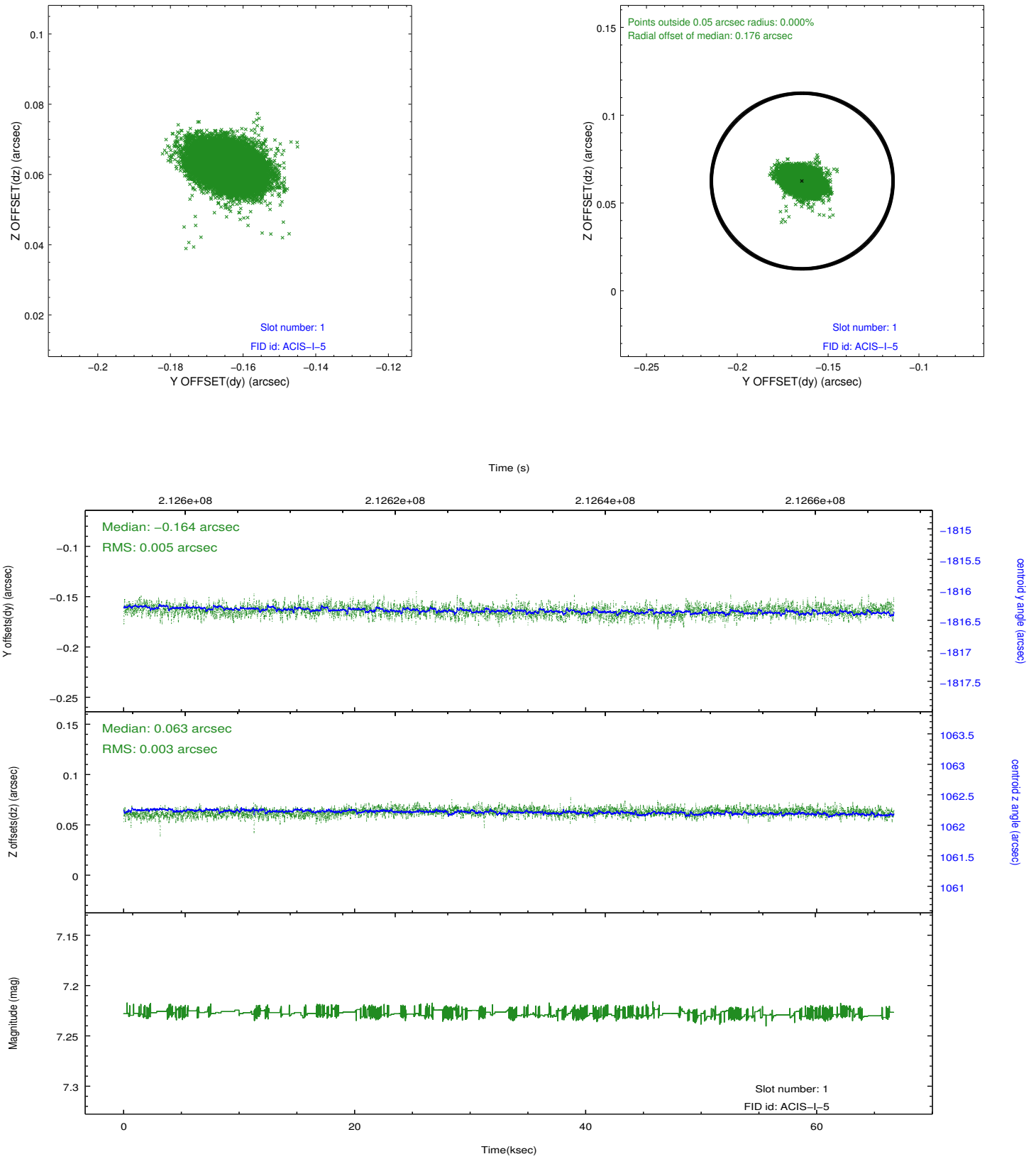


2.5 FID Slots

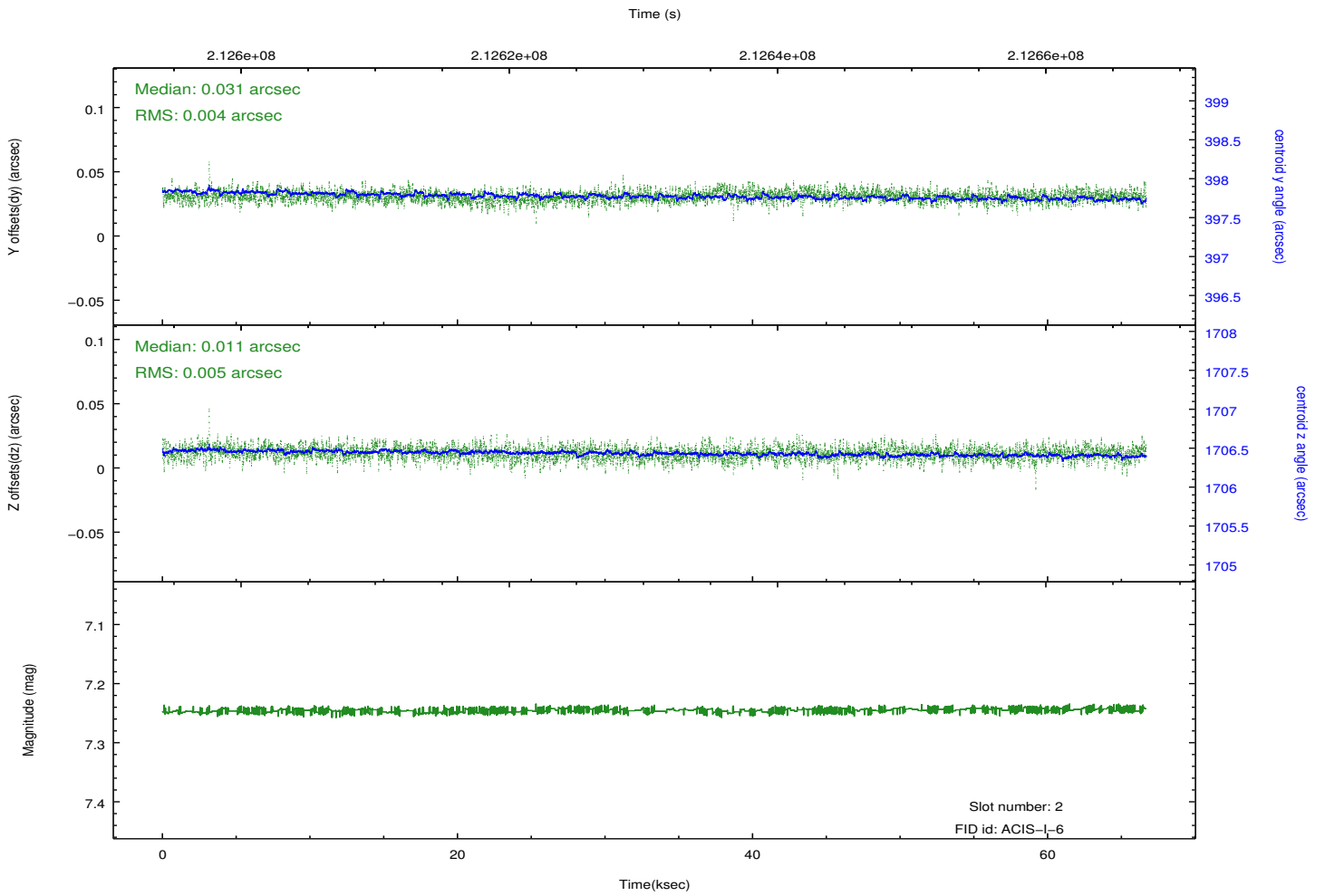
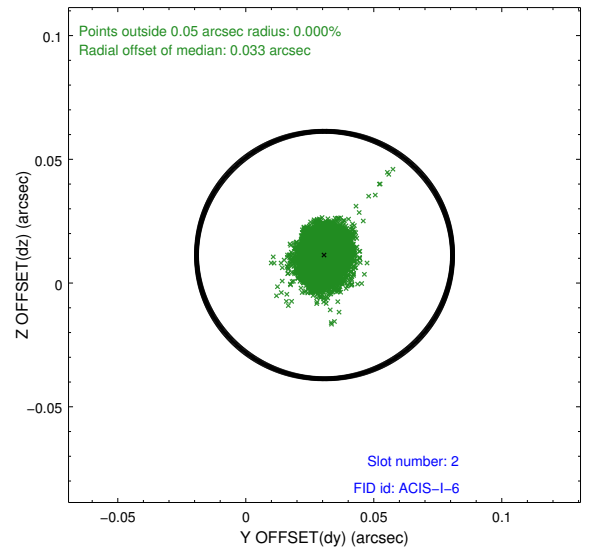
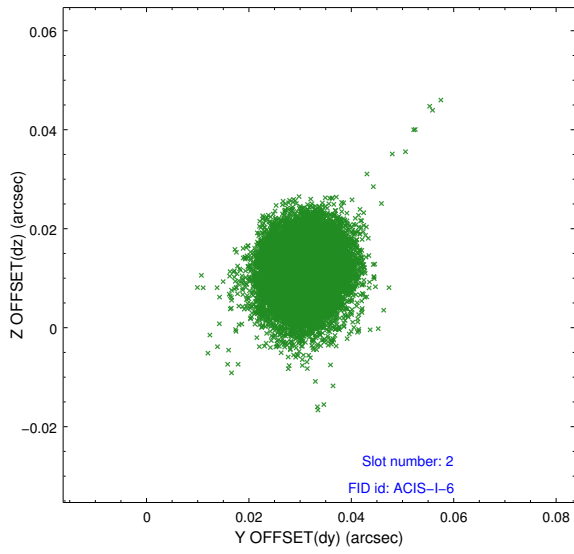
2.5.1 Slot 0



2.5.2 Slot 1



2.5.3 Slot 2



A Summary

A.1 Status

V&V Scientist	Beth Sundheim
V&V Date (YYYY-MM-DD)	2013.01.02
V&V Edition	1
V&V Disposition and Status	OK
V&V Charge Time	66.259

A.2 Comments

Joint proposal with NOAO.

Roll preference was not met (0.2 degrees outside requested angle.)